

SECTION CORNER RECORD

NW 700-900

BOONE COUNTY SURVEYOR'S OFFICE

State Plane grid coordinates NAD83 (CORS96):

North: 1782726.77 East: 3077227.80 (U.S. survey feet)

Type of monument: Harrison, 4" disk 'Section Corner'

Depth: generally flush with ground along steep hillside

Indiana tie card references:

IN02_T20NR2W28_80 IN02_T20NR2W27_72

IN02_T20NR2W33_08 IN02_T20NR2W34_00

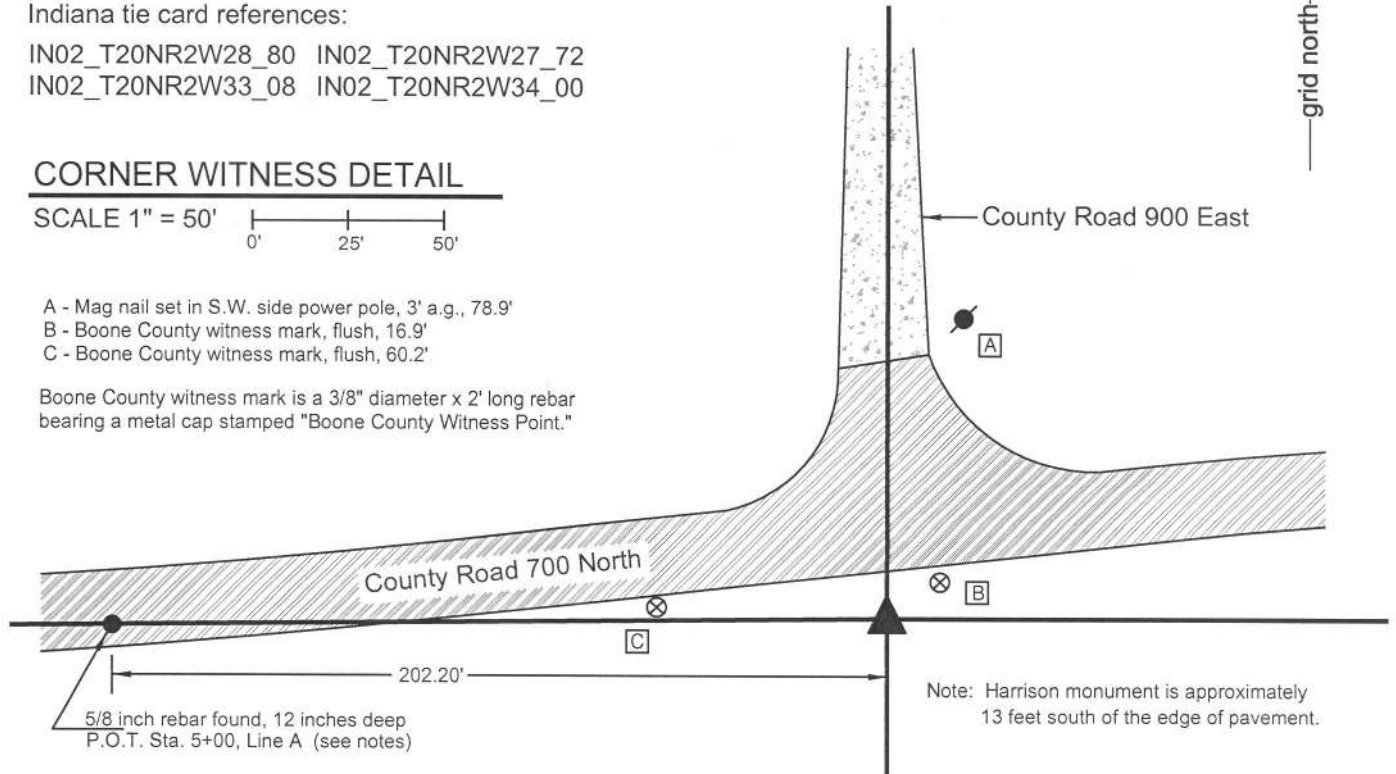


CORNER WITNESS DETAIL

SCALE 1" = 50'

- A - Mag nail set in S.W. side power pole, 3' a.g., 78.9'
- B - Boone County witness mark, flush, 16.9'
- C - Boone County witness mark, flush, 60.2'

Boone County witness mark is a 3/8" diameter x 2' long rebar bearing a metal cap stamped "Boone County Witness Point."



Note: Harrison monument is approximately 13 feet south of the edge of pavement.

The Harrison monument was set in a calculated position per bridge plans.

No specific descriptions of this corner were found in the old BCS Surveyor's Record, nor were any recent BCS tie cards found referencing this corner. Significant excavation was not performed at this corner due to the fact that it is situated in an area of significant fill material associated with the approach to a bridge over Sugar Creek immediately to the east. The position of this corner was determined in October 2014. During reconnaissance beginning October 16, 2014 no monumentation was found marking the corner. The plans for the adjacent bridge were provided by the Boone County Highway Department. These plans are dated June 6, 1995, referenced as project BRO-9906. These plans show the corner as being a "Blt. Spike, Sec. Cor." and reference the corner as being at Sta. P.O.T. 7+02.20, Line A. The original control monuments for the bridge plans are a rebar at P.O.T. 5+00.00, Line A and a rebar at P.O.T. 18+41.93, Line A. Both of these rebars were recovered, apparently undisturbed, and located at the proper distance apart from each other, per the stations. The rebar at 5+00 is in the road 12 inches deep and the rebar at 18+41.93 is in the road 3 inches deep. These two rebars were held as defining line A for the bridge plans. The section corner was established at 202.20 feet east of the rebar at station 5+00 and a Harrison monument was set at this position. It is noted that the plans graphically demonstrate this corner as having been in the center of the T-intersection of the two roads, prior to reconstruction of the roads. This position did fit well with the centers of the road north and west, as they are located beyond the areas of reconstruction. Furthermore, this position fit well with the relative positions of a stone found at the quarter section corner 1/2 mile west and the approximate location of the quarter-quarter corner 1/4 mile west, being in the center of the east-west road and in line with an old fence to the north. It is further noted that excavation was performed at this quarter-quarter corner but no physical evidence of the corner was found except the road and fence. The Harrison monument is set within a section of 10 inch diameter HDPE storm pipe set vertically, 22 inches tall, filled with concrete. This monument falls along the slope of the fill area approximately 13 feet south of the south edge of pavement of the road, in line with the center of the road to the north. This corner was originally established as a wood post in 1829.



Kenneth E. Hedge, County Surveyor

James S. Swift, IN LS 20200054
 March 27, 2015

Sugar Creek Twp.

Section 28 T20N, R2W	Section 27 T20N, R2W
Section 33 T20N, R2W	Section 34 T20N, R2W

SECTION CORNER RECORD

NW 750-900

BOONE COUNTY SURVEYOR'S OFFICE

State Plane grid coordinates NAD83 (2011):
North: 1785376.56 East: 3077235.41 (U.S. survey feet)

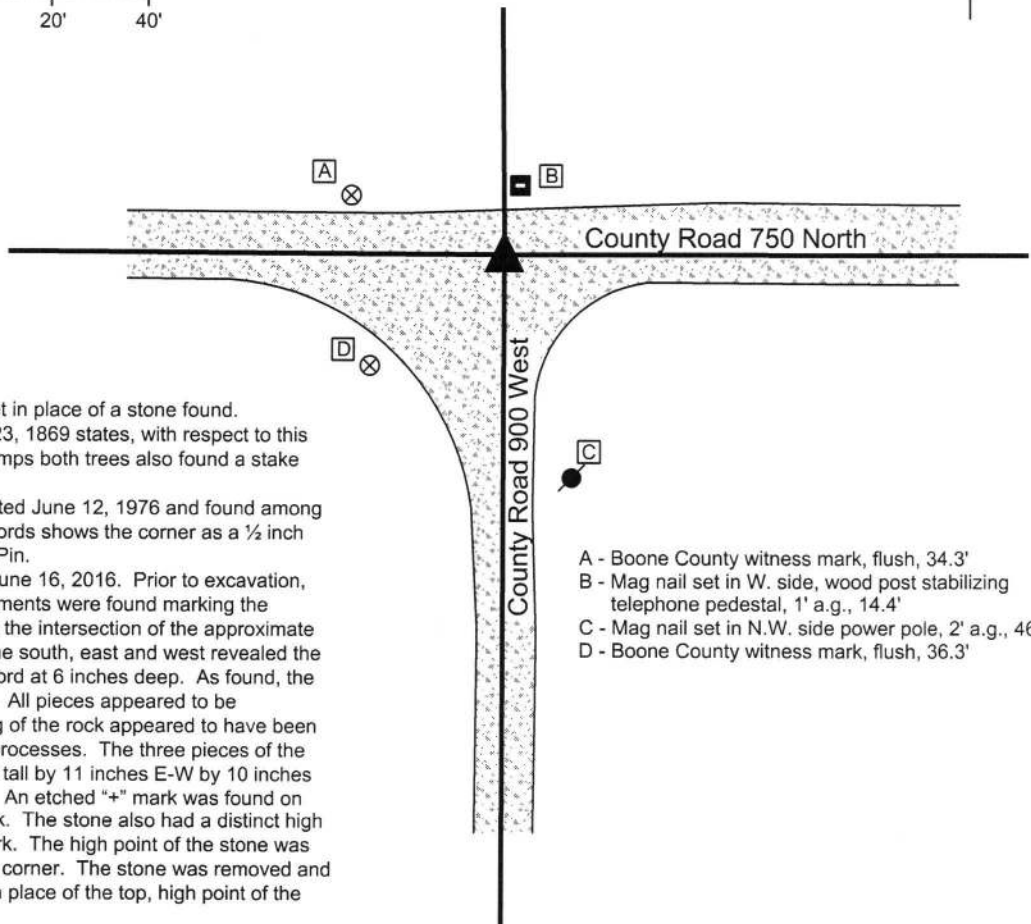
Type of monument: Harrison, 4" disk 'Section Corner'
Depth: Six inches below adjacent gravel road surface

Indiana tie card references:
IN02_T20NR2W28_36 IN02_T20NR2W27_44



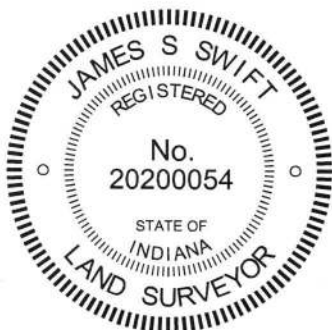
CORNER WITNESS DETAIL

SCALE 1" = 40'
0' 20' 40'



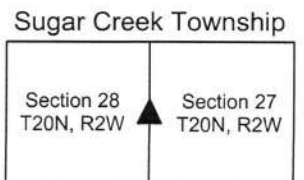
The Harrison monument was set in place of a stone found. A BCS record dated March 22-23, 1869 states, with respect to this corner, "Reestablished from stumps both trees also found a stake set. Set Rock 15,10,11 +." A tie card of unknown origin, dated June 12, 1976 and found among the Boone County Surveyor records shows the corner as a 1/2 inch I.P., presumably indicating Iron Pin. This corner was excavated on June 16, 2016. Prior to excavation, no metal or other artificial monuments were found marking the corner. Excavation centered on the intersection of the approximate centers of the county roads to the south, east and west revealed the stone described in the 1869 record at 6 inches deep. As found, the stone was in 3 separate pieces. All pieces appeared to be undisturbed and the fragmenting of the rock appeared to have been caused by natural freeze-thaw processes. The three pieces of the stone combined were 15 inches tall by 11 inches E-W by 10 inches N-S, matching the 1869 record. An etched "+" mark was found on the north sloping side of the rock. The stone also had a distinct high point, in line with the etched mark. The high point of the stone was held as the exact position of the corner. The stone was removed and a Harrison monument was set in place of the top, high point of the stone, as originally found. This corner was originally established in 1829.

- A - Boone County witness mark, flush, 34.3'
- B - Mag nail set in W. side, wood post stabilizing telephone pedestal, 1' a.g., 14.4'
- C - Mag nail set in N.W. side power pole, 2' a.g., 46.6'
- D - Boone County witness mark, flush, 36.3'



Kenneth E. Hedge
Kenneth E. Hedge, County Surveyor

James S. Swift
James S. Swift, IN LS 20200054
March 23, 2017



PHOTOGRAPHIC DOCUMENTATION

Date of photography: June 16, 2016

The stone as it was originally exposed, showing the etched "+" mark on top.



The three parts of the stone, after exposing all three components of the broken rock.



View from the north, looking across the stone and south along C.R. 900 East.



View from the east, looking across the stone and west along C.R. 750 North.



For details and documentation, refer to related sheet "Section Corner Record."

PHOTOGRAPHIC DOCUMENTATION

Date of photography: October 29, 2014

The stone as originally found.



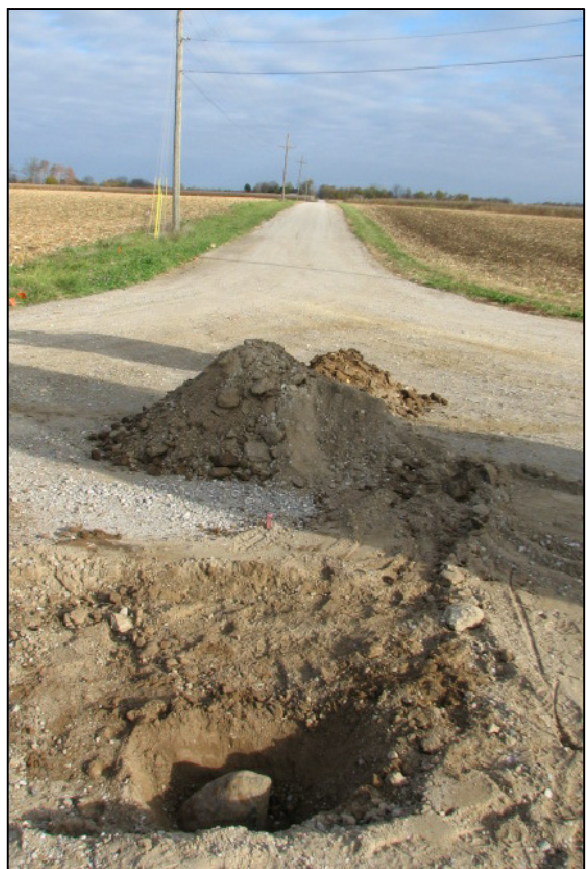
The stone more fully exposed.



The stone removed from the road.
This view shows the north side of the
stone, as it was situated in the road.



View from the south, looking across the stone
and north along County Road 900 West.



The stone removed from the road.
This view shows the north and east sides
of the stone, as it was situated in the road.



For details and documentation, refer to
related sheet "Section Corner Record."

SECTION CORNER RECORD

BOONE COUNTY SURVEYOR'S OFFICE

NW 800-850

State Plane grid coordinates NAD83 (2011):
 North: 1788037.46 East: 3079850.32 (U.S. survey feet)

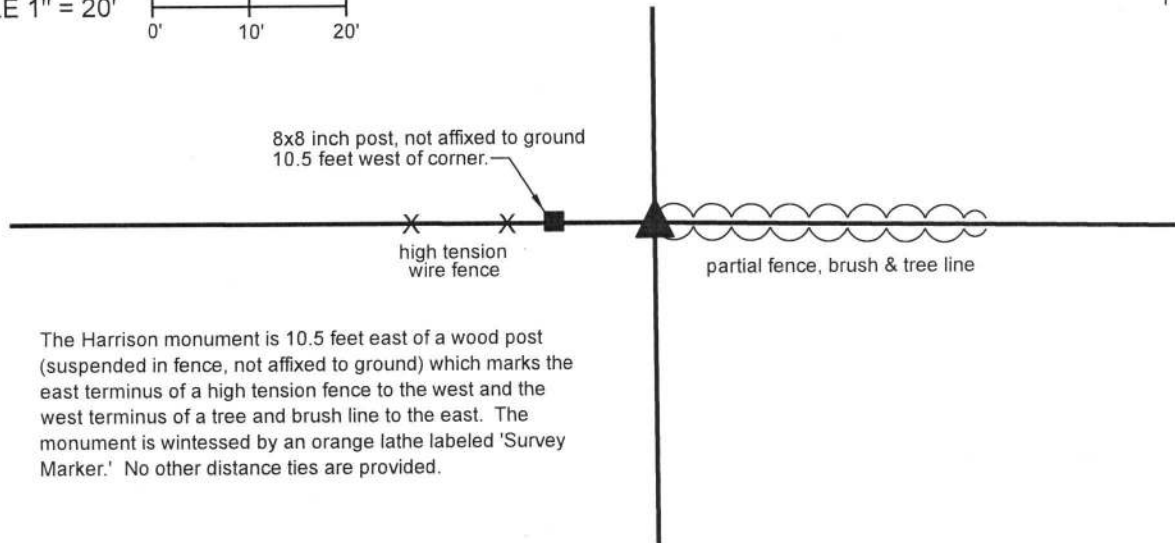
Type of monument: Harrison, 4" disk 'Section Corner'
 Depth: 5 inches above adjacent ground

Indiana tie card references:
 IN02_T20NR2W22_76 IN02_T20NR2W27_04



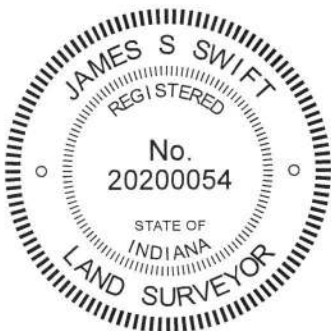
CORNER WITNESS DETAIL

SCALE 1" = 20'
 0' 10' 20'



The Harrison monument is 10.5 feet east of a wood post (suspended in fence, not affixed to ground) which marks the east terminus of a high tension fence to the west and the west terminus of a tree and brush line to the east. The monument is witnessed by an orange lathe labeled 'Survey Marker.' No other distance ties are provided.

The Harrison monument was set in place of a wood corner post found. A BCS Record of September 19-20 and December 1, 1887 states, with respect to this corner, "Reestablished by measure, set rock 20.11.12 +." No recent BCS tie cards or recorded surveys were found referencing this corner. Substantial reconnaissance in the general vicinity of this corner and excavation in the immediate vicinity of the corner were performed in November, 2018. At that time, it was observed that a large wood post, 8x8 inches, was present representing the easterly terminus of a high tension wire fence to the west and a wire fence, generally on the ground to the east. No evidence of north-south fencing was found attached to this post. However, a smaller and evidently older wood post was found 10.5 feet to the east. This older post clearly had fencing to the east and west and evidence of fencing cut toward the north. Analysis of the relative positions of the post and the available evidence in the surrounding area, including many corner posts providing evidence of section corners, quarter corners, half-quarter corners, property corners and evidence along the nearby railroad right-of-way clearly indicated that the older, smaller post fits better as a corner position than does the newer, larger post. Excavation around both posts and in the immediate vicinity thereof revealed a variety of rocks, universally found in haphazard orientation. The specific stone called for the in 1887 record was not found. The older post was held accepted as providing the best available evidence of the corner. The post was removed from the ground on March 19, 2019 and a Harrison monument was set in position of the post. This corner was originally established as a wood post in 1829.



Kenneth E. Hedge
 Kenneth E. Hedge, County Surveyor

James S. Swift
 James S. Swift, IN LS 20200054
 April 3, 2019

Sugar Creek Township

