

SECTION CORNER RECORD

BOONE COUNTY SURVEYOR'S OFFICE

NE 700-900

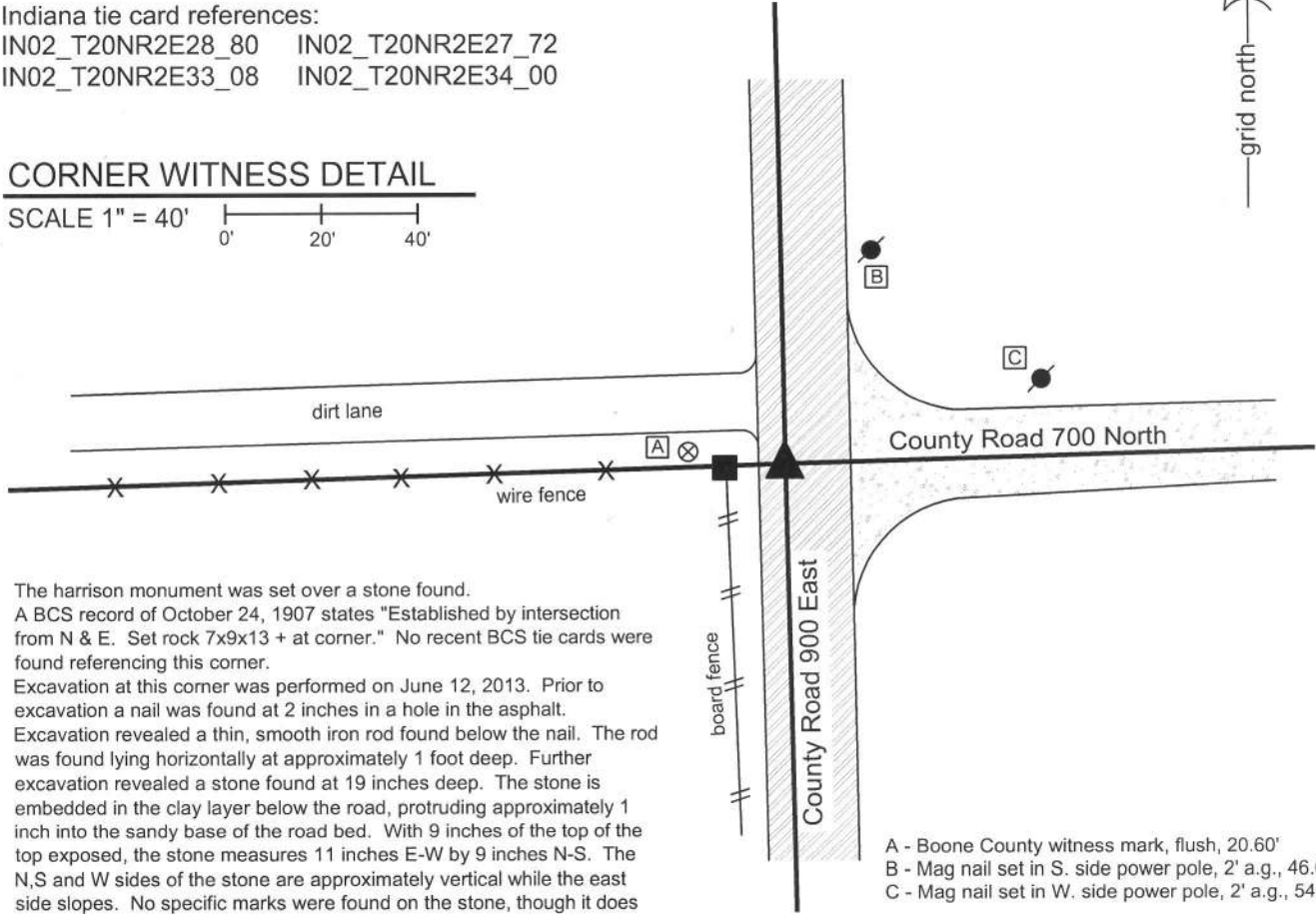
State Plane grid coordinates NAD83 (CORS96):
 North: 1783792.92 East: 3172020.45 (U.S. survey feet)

Type of monument: Harrison, 4" disk 'Section Corner'
 Depth: One inch below adjacent road surface

Indiana tie card references:
 IN02_T20NR2E28_80 IN02_T20NR2E27_72
 IN02_T20NR2E33_08 IN02_T20NR2E34_00

CORNER WITNESS DETAIL

SCALE 1" = 40'



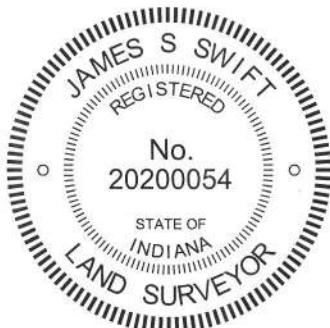
The harrison monument was set over a stone found.
 A BCS record of October 24, 1907 states "Established by intersection from N & E. Set rock 7x9x13 + at corner." No recent BCS tie cards were found referencing this corner.

Excavation at this corner was performed on June 12, 2013. Prior to excavation a nail was found at 2 inches in a hole in the asphalt. Excavation revealed a thin, smooth iron rod found below the nail. The rod was found lying horizontally at approximately 1 foot deep. Further excavation revealed a stone found at 19 inches deep. The stone is embedded in the clay layer below the road, protruding approximately 1 inch into the sandy base of the road bed. With 9 inches of the top of the top exposed, the stone measures 11 inches E-W by 9 inches N-S. The N,S and W sides of the stone are approximately vertical while the east side slopes. No specific marks were found on the stone, though it does have a distinct high point at the top, near the west edge. The stone appears to be slightly larger than that described in the 1907 record though of similar proportions in the E-W and N-S dimensions. It is not clear whether this is the same monument as described in the 1907 record. The stone is west of the center of the road at the intersection but in line with the center of the road extended north and south. The stone is in line with the fence to the west and the road to the east. The stone was left in place and a harrison monument was set over the top, high point of the stone. The nail, removed during excavation, had been 0.4 foot north and 2.5 feet east of the stone.

This corner was originally established as a wood post in 1821.

- A - Boone County witness mark, flush, 20.60'
- B - Mag nail set in S. side power pole, 2' a.g., 46.64'
- C - Mag nail set in W. side power pole, 2' a.g., 54.44'

Boone County witness mark is a 3/8" diameter x 2' long rebar bearing a metal cap stamped "Boone County Witness Point."



Kenneth E. Hedge
 Kenneth E. Hedge, County Surveyor

James S. Swift
 James S. Swift, IN LS 20200054
 February 5, 2015

Marion Township

Section 28 T20N, R2E	Section 27 T20N, R2E
Section 33 T20N, R2E	Section 34 T20N, R2E

PHOTOGRAPHIC DOCUMENTATION

Date of photography: June 12, 2013

View of the stone as first exposed.



View of the stone from above.



View from the north,
looking south along C.R. 900 East.



View from the east,
looking west along the adjacent fence line.



For details and documentation, refer to related sheet "Section Corner Record."

SECTION CORNER RECORD

NE 700-950

BOONE COUNTY SURVEYOR'S OFFICE

State Plane grid coordinates NAD83 (2011):

North: 1783868.89 East: 3174677.74 (U.S. survey feet)

Type of monument: Harrison, 4" disk 'Section Corner'

Depth: six inches below adjacent road surface

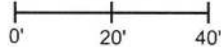
Indiana tie card references:

IN02_T20NR2E27_76

IN02_T20NR2E34_04

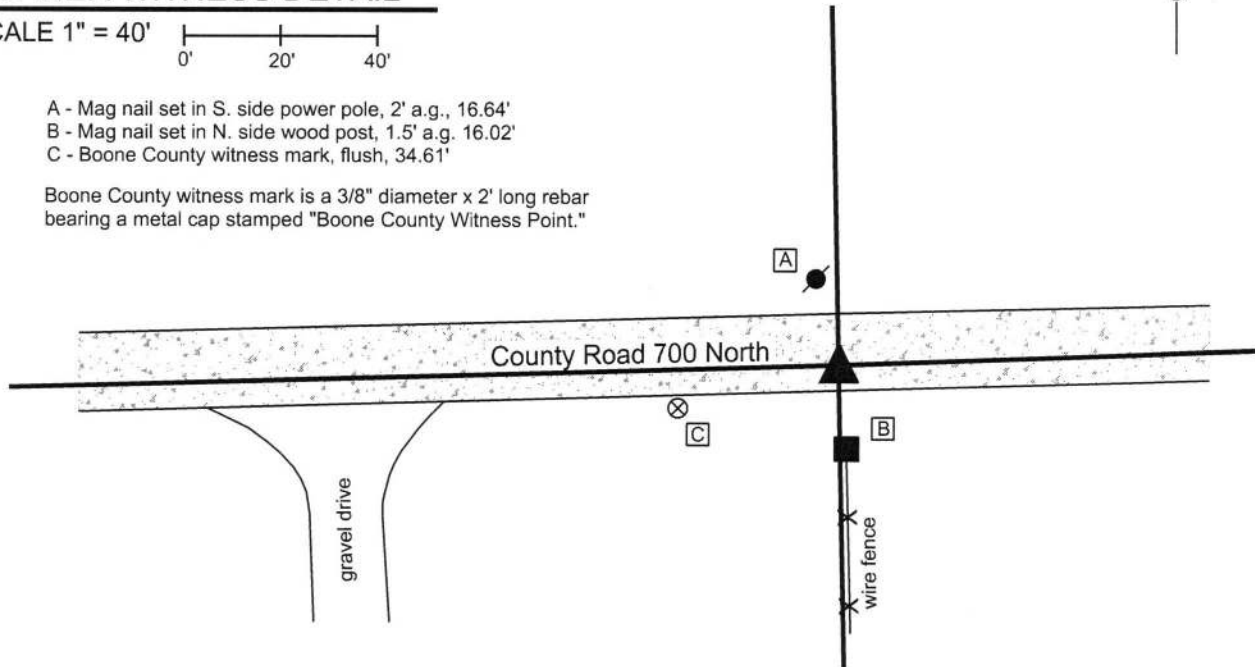
CORNER WITNESS DETAIL

SCALE 1" = 40'



- A - Mag nail set in S. side power pole, 2' a.g., 16.64'
- B - Mag nail set in N. side wood post, 1.5' a.g. 16.02'
- C - Boone County witness mark, flush, 34.61'

Boone County witness mark is a 3/8" diameter x 2' long rebar bearing a metal cap stamped "Boone County Witness Point."



The harrison monument was set over a stone found.

A BCS record of April 27-28, 1874 states "Reestablished from stumps of both trees, set a rock 16,8 by 8 +." A BCS tie card dated August 10, 1974 states "No stone found."

This corner was excavated on July 20, 2013. Prior to excavation a railroad spike was found at 4 inches deep in the gravel road, disturbed and leaning to the south. Excavation revealed a stone found at 8 inches deep, embedded in the clay layer below the road bed. The stone has a clear and distinct etched "+" mark on the top. With the top 10 inches of the stone exposed, it measured 8 inches E-W by 8 inches N-S. The stone was accepted as being the same monument described in the 1874 record. The etched mark is slightly east of the high point of the sloping top of the stone but appeared to be over the approximate center of mass of the stone. The stone was left in place, the top 10 inches were encased in concrete and a short harrison monument was set directly over the etched "+" mark on the stone. The railroad spike, removed during excavation, had been 0.4 foot north and 0.9 foot east of the stone.

This corner was originally established as a wood post in 1821.




Kenneth E. Hedge, County Surveyor


James S. Swift, IN LS 20200054

February 5, 2015, revised May 17, 2016

Marion Township

Section 27
T20N, R2E

Section 34
T20N, R2E

PHOTOGRAPHIC DOCUMENTATION

Date of photography: July 24, 2013

The stone from above and east, dry.



The stone from above and east, wet.



View from the east, looking across the stone and west along C.R. 700 North.



View from the north, looking across the stone and south along the adjacent fence.



For details and documentation, refer to related sheet "Section Corner Record."

SECTION CORNER RECORD

NE 700-1000

BOONE COUNTY SURVEYOR'S OFFICE

State Plane grid coordinates NAD83 (CORS96):

North: 1783963.61 East: 3177327.06 (U.S. survey feet)

Type of monument: Harrison, 4" disk 'Section Corner'

Depth: One inch below adjacent road surface

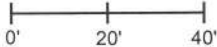
Indiana tie card references:

IN02_T20NR2E12_80 IN02_T20NR2E26_72

IN02_T20NR2E34_08 IN02_T20NR2E35_00

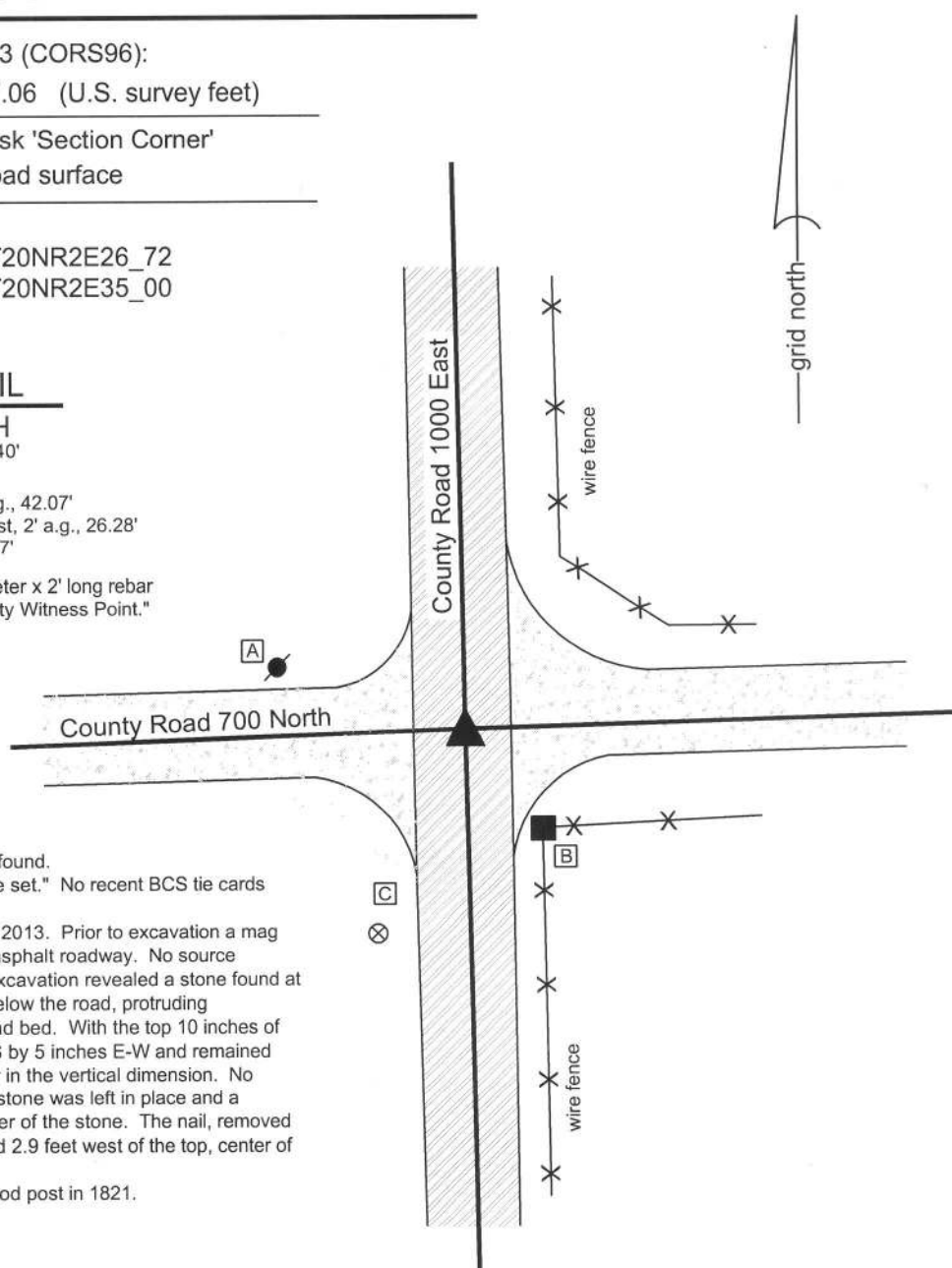
CORNER WITNESS DETAIL

SCALE 1" = 40'



- A - Mag nail set in S. side power pole, 2' a.g., 42.07'
- B - Mag nail set in W. side, wood corner post, 2' a.g., 26.28'
- C - Boone County witness mark, flush, 46.97'

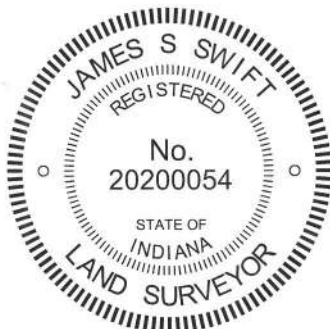
Boone County witness mark is a 3/8" diameter x 2' long rebar bearing a metal cap stamped "Boone County Witness Point."



The harrison monument was set over a stone found. A BCS record of March 25, 1853 states "Stone set." No recent BCS tie cards were found referencing this corner.

Excavation at this corner occurred on July 25, 2013. Prior to excavation a mag nail was found at 1 inch deep in a hole in the asphalt roadway. No source documentation was found for this mag nail. Excavation revealed a stone found at 20 inches deep, embedded in the clay layer below the road, protruding approximately 1 inch into the bottom of the road bed. With the top 10 inches of the stone exposed, it measured 12 inches N-S by 5 inches E-W and remained stable in the clay, indicating that it is yet larger in the vertical dimension. No specific marks were found on the stone. The stone was left in place and a harrison monument was set over the top, center of the stone. The nail, removed during excavation, had been 0.6 foot north and 2.9 feet west of the top, center of the stone.

This corner was originally established as a wood post in 1821.



Kenneth E. Hedge
 Kenneth E. Hedge, County Surveyor

James S. Swift
 James S. Swift, IN LS 20200054
 February 5, 2015

Marion Township

Section 27 T20N, R2E	Section 26 T20N, R2E
Section 34 T20N, R2E	Section 35 T20N, R2E

PHOTOGRAPHIC DOCUMENTATION

Date of photography: July 25, 2013

View of the stone from above and south.



View of the stone from above.



View from above the stone, looking south along County Road 1000 East..



View from above the stone, looking west along County Road 700 North.



For details and documentation, refer to related sheet "Section Corner Record."

SECTION CORNER RECORD

NE 750-900

BOONE COUNTY SURVEYOR'S OFFICE

State Plane grid coordinates NAD83 (CORS96):

North: 1786440.26 East: 3171966.44 (U.S. survey feet)

Type of monument: Harrison, 4" disk 'Section Corner'

Depth: One inch below adjacent road surface

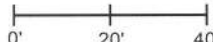
Indiana tie card references:

IN02_T20NR2E28_44

IN02_T20NR2E27_36

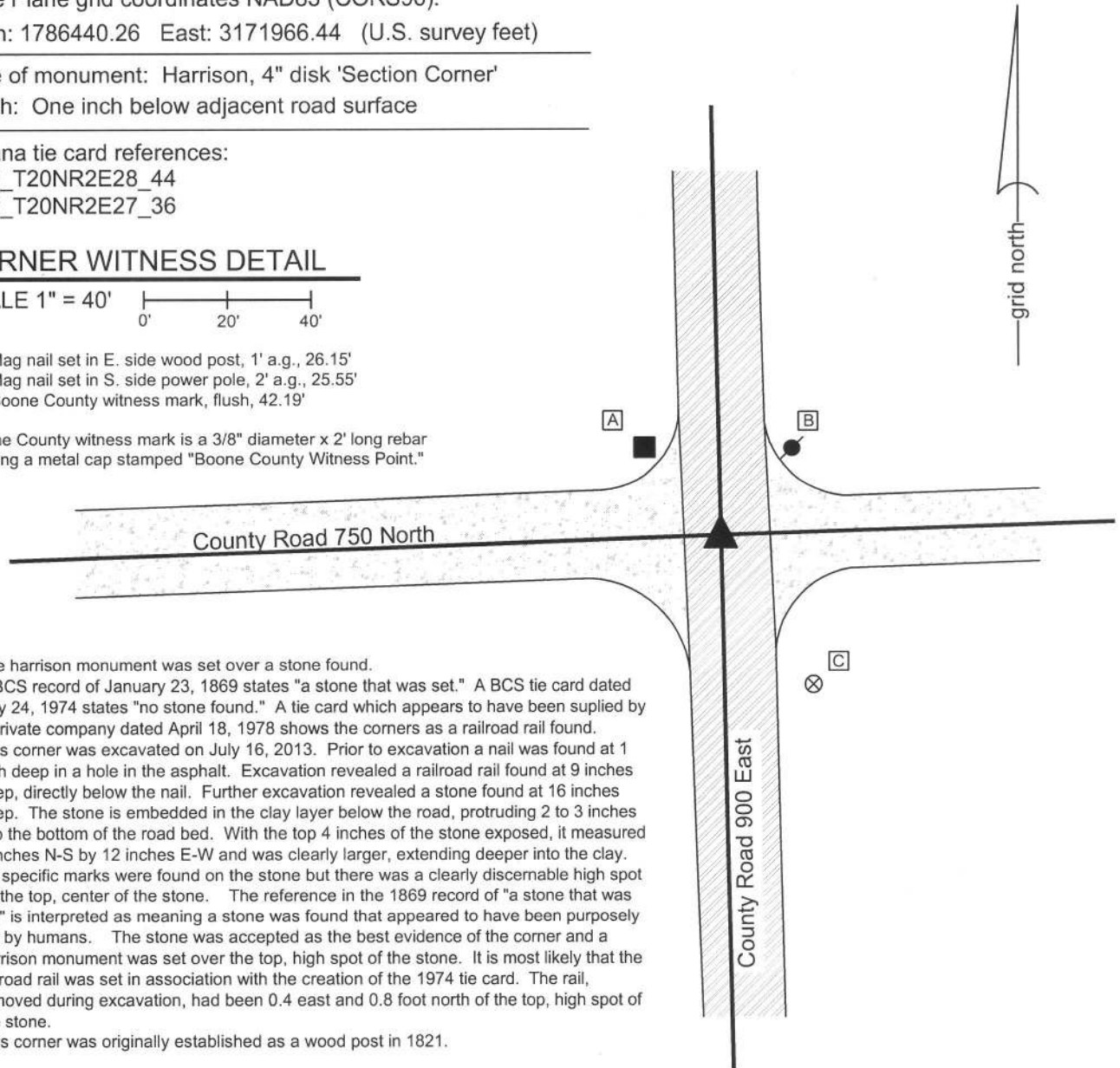
CORNER WITNESS DETAIL

SCALE 1" = 40'



- A - Mag nail set in E. side wood post, 1' a.g., 26.15'
- B - Mag nail set in S. side power pole, 2' a.g., 25.55'
- C - Boone County witness mark, flush, 42.19'

Boone County witness mark is a 3/8" diameter x 2' long rebar bearing a metal cap stamped "Boone County Witness Point."



The Harrison monument was set over a stone found.

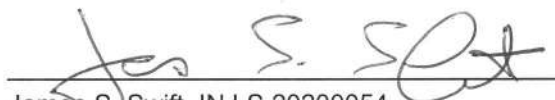
A BCS record of January 23, 1869 states "a stone that was set." A BCS tie card dated July 24, 1974 states "no stone found." A tie card which appears to have been supplied by a private company dated April 18, 1978 shows the corners as a railroad rail found.

This corner was excavated on July 16, 2013. Prior to excavation a nail was found at 1 inch deep in a hole in the asphalt. Excavation revealed a railroad rail found at 9 inches deep, directly below the nail. Further excavation revealed a stone found at 16 inches deep. The stone is embedded in the clay layer below the road, protruding 2 to 3 inches into the bottom of the road bed. With the top 4 inches of the stone exposed, it measured 9 inches N-S by 12 inches E-W and was clearly larger, extending deeper into the clay. No specific marks were found on the stone but there was a clearly discernable high spot on the top, center of the stone. The reference in the 1869 record of "a stone that was set" is interpreted as meaning a stone was found that appeared to have been purposely set by humans. The stone was accepted as the best evidence of the corner and a Harrison monument was set over the top, high spot of the stone. It is most likely that the railroad rail was set in association with the creation of the 1974 tie card. The rail, removed during excavation, had been 0.4 east and 0.8 foot north of the top, high spot of the stone.

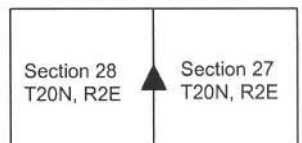
This corner was originally established as a wood post in 1821.




Kenneth E. Hedge, County Surveyor


James S. Swift, IN LS 20200054
February 5, 2015

Marion Township



PHOTOGRAPHIC DOCUMENTATION

Date of photography: July 16, 2013

View of the stone from above and north.



View of the stone from above and west.



View from the north, looking across the stone and south along County Road 900 East.



View from the west, looking across the stone and east along County Road 750 North.



For details and documentation, refer to related sheet "Section Corner Record."

SECTION CORNER RECORD

NE 750-1000

BOONE COUNTY SURVEYOR'S OFFICE

State Plane grid coordinates NAD83 (CORS96):

North: 1786612.80 East: 3177274.81 (U.S. survey feet)

Type of monument: Harrison, 4" disk 'Section Corner'

Depth: One inch below adjacent road surface

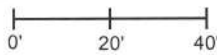
Indiana tie card references:

IN02_T20NR2E27_44

IN02_T20NR2E26_36

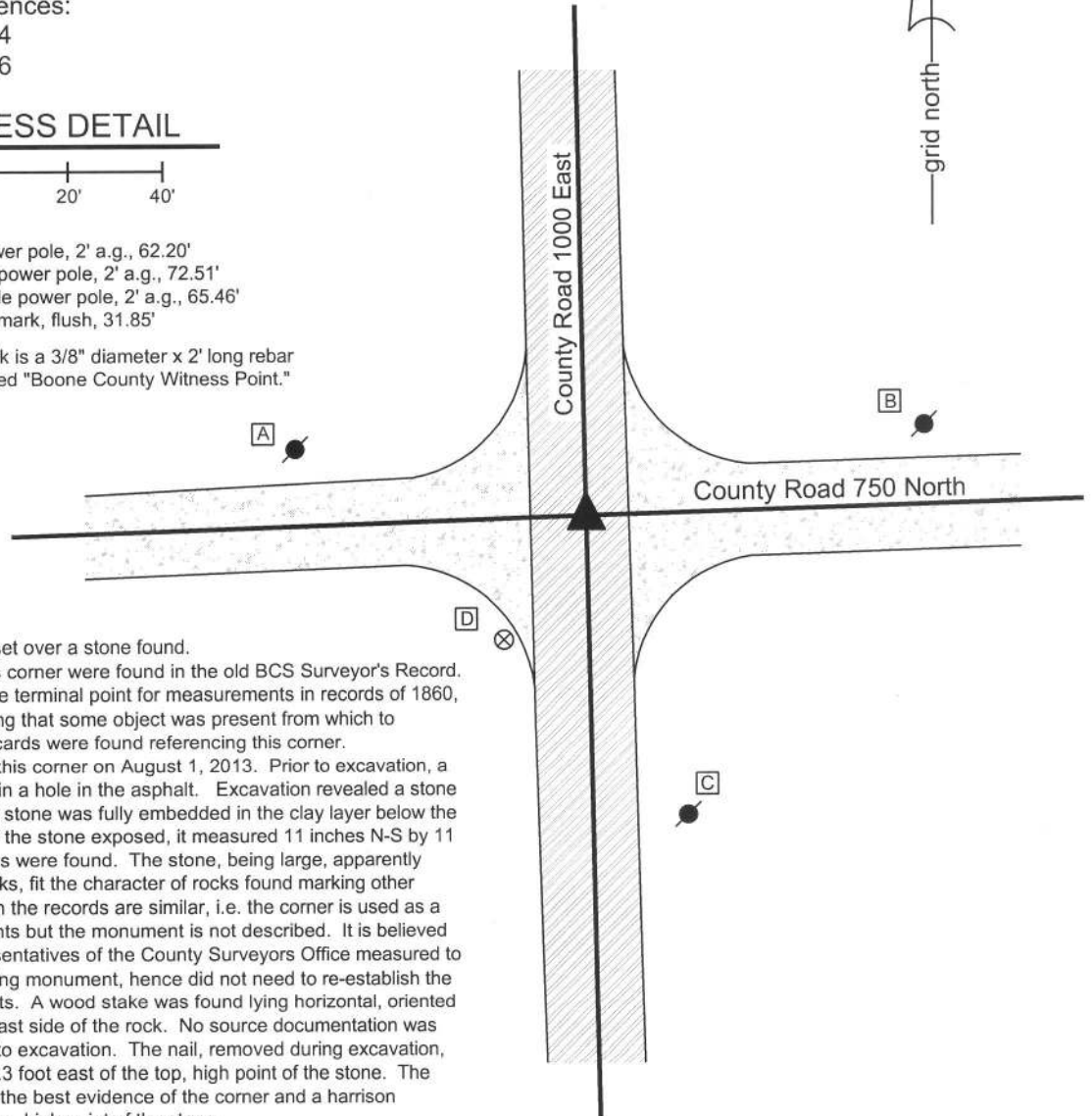
CORNER WITNESS DETAIL

SCALE 1" = 40'



- A - Mag nail set in S.E. power pole, 2' a.g., 62.20'
- B - Mag nail set in W. side power pole, 2' a.g., 72.51'
- C - Mag nail set in N.W. side power pole, 2' a.g., 65.46'
- D - Boone County witness mark, flush, 31.85'

Boone County witness mark is a 3/8" diameter x 2' long rebar bearing a metal cap stamped "Boone County Witness Point."

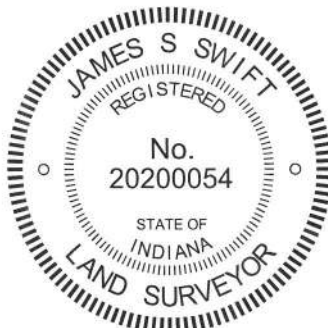


The harrison monument was set over a stone found.

No specific descriptions of this corner were found in the old BCS Surveyor's Record. The corner is mentioned as the terminal point for measurements in records of 1860, 1869, 1874 and 1912, indicating that some object was present from which to measure. No recent BCS tie cards were found referencing this corner.

Excavation was performed at this corner on August 1, 2013. Prior to excavation, a nail was found at 1 inch deep in a hole in the asphalt. Excavation revealed a stone found at 30 inches deep. The stone was fully embedded in the clay layer below the road. With the top 6 inches of the stone exposed, it measured 11 inches N-S by 11 inches E-W. No specific marks were found. The stone, being large, apparently horizontal and bearing no marks, fit the character of rocks found marking other corners in the county for which the records are similar, i.e. the corner is used as a terminal point for measurements but the monument is not described. It is believed that in these situations, representatives of the County Surveyors Office measured to the corner and found an existing monument, hence did not need to re-establish the corner and set new monuments. A wood stake was found lying horizontal, oriented in a N-S direction, along the east side of the rock. No source documentation was found for the nail visible prior to excavation. The nail, removed during excavation, had been 0.7 foot north and 0.3 foot east of the top, high point of the stone. The found stone was accepted as the best evidence of the corner and a harrison monument was set over the top, high point of the stone.

This corner was originally established as a wood post in 1821.



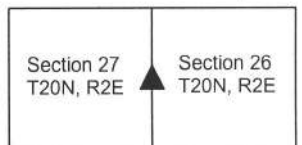
Kenneth E. Hedge

 Kenneth E. Hedge, County Surveyor

James S. Swift

 James S. Swift, IN LS 20200054
 February 5, 2015

Marion Township



PHOTOGRAPHIC DOCUMENTATION

Date of photography: August 1, 2013

The piece of wood found below the nail and above the stone.



View of the stone and the wood stake.



The stone from above.



View from above the stone, looking south along County Road 1000 East.



View from above the stone, looking west along County Road 750 North.



View from above the stone, looking north along County Road 1000 East.



For details and documentation, refer to related sheet "Section Corner Record."

SECTION CORNER RECORD

BOONE COUNTY SURVEYOR'S OFFICE

NE 800-900

State Plane grid coordinates NAD83 (CORS96):

North: 1789073.68 East: 3171911.56 (U.S. survey feet)

Type of monument: Harrison, 4" disk 'Section Corner'

Depth: One inch below adjacent road surface

Indiana tie card references:

IN02_T20NR2E21_80 IN02_T20NR2E22_72

IN02_T20NR2E28_08 IN02_T20NR2E27_00

CORNER WITNESS DETAIL

SCALE 1" = 40'



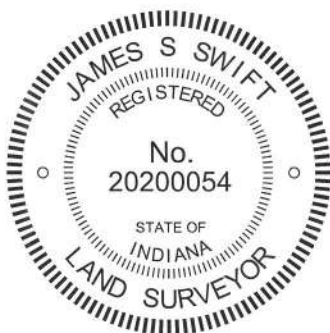
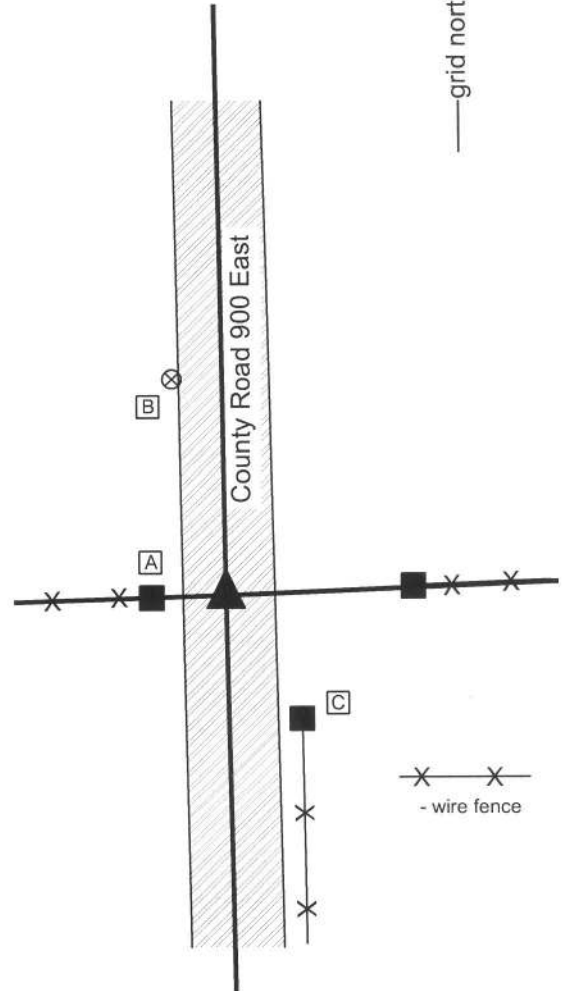
- A - Mag nail set in N. side, wood end post, 15.5'
- B - Boone County witness mark, flush, 46.2'
- C - Mag nail set in W. side wood end post, 2' a.g., 30.0'

Boone County witness mark is a 3/8" diameter x 2' long rebar bearing a metal cap stamped "Boone County Witness Point."

The harrison monument was set over a stone found.

A BCS record of February 17-18, 1869 states "Reestablished at intersection of lines 5.15 north of the stump of Elm sight tree called for. Set two rocks, one 7.5.4 marked +. Top rock 16.8.7 1/2 +." It is noted that the Elm sight tree is mentioned in the original federal notes as "A W Elm 14 in. diam." at 74.85 chains north along the line between sections 27 and 28. A tie card which appears to have been supplied by a private company, dated April 18, 1978 states "fnd. stone 0.7' deep, chiseled 'x'."

This corner was excavated on July 16, 2013. Prior to excavation a railroad spike was found at 3 inches deep in a hole in the asphalt. The railroad spike agreed with the remaining distance ties from the 1978 card. Excavation revealed a stone found at 9 inches deep, directly below the railroad spike. With the top 6 inches of the stone exposed, it measure 7 inches N-S by 8 inches E-W with a clearly chiseled + mark on the top and the high point, near the west edge of the top of the stone. The north and west sides of the stone were flat and vertical. The railroad spike had been approximately 1 inch east of the etched + mark but was clearly over the top of the stone. The stone was left in place and a harrison monument was set over it in the position of the railroad spike as originally found. This corner was originally established as a wood post in 1822.



Kenneth E. Hedge
 Kenneth E. Hedge, County Surveyor

James S. Swift
 James S. Swift, IN LS 20200054
 February 5, 2015

Marion Township

Section 21 T20N, R2E	Section 22 T20N, R2E
Section 28 T20N, R2E	Section 27 T20N, R2E

PHOTOGRAPHIC DOCUMENTATION

Date of photography: July 16, 2013

View of the stone from above and north.



The stone washed, showing the etched + and the rust mark from the railroad spike.



View of the stone from above and east.



For details and documentation, refer to related sheet "Section Corner Record."

View from the south, looking across the stone and north along County Road 900 East.



SECTION CORNER RECORD

NE 800-950

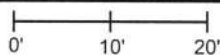
BOONE COUNTY SURVEYOR'S OFFICE

State Plane grid coordinates NAD83 (2011):
North: 1789168.96 East: 3174560.95 (U.S. survey feet)

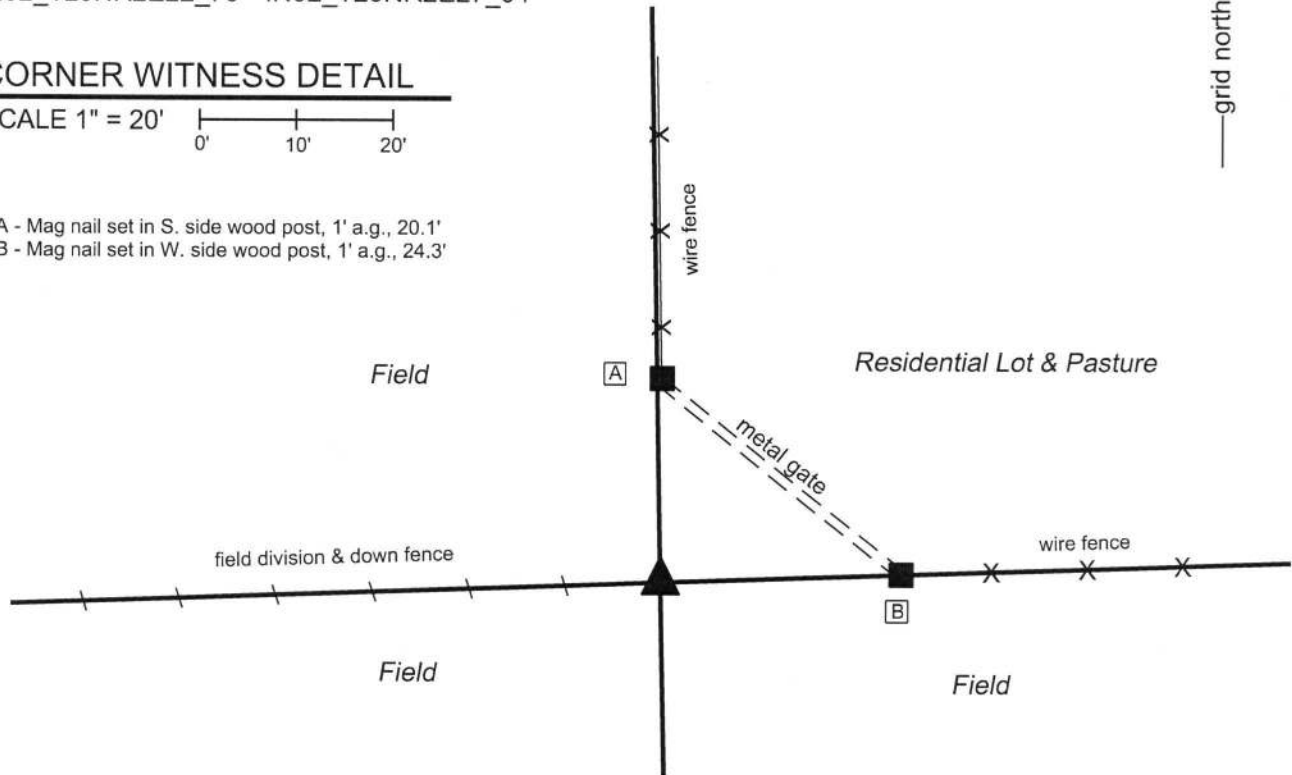
Type of monument: Harrison, 4" disk 'Section Corner'
Depth: One inch above the adjacent ground

Indiana tie card references:
IN02_T20NR2E22_76 IN02_T20NR2E27_04

CORNER WITNESS DETAIL

SCALE 1" = 20' 

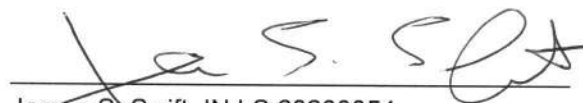
A - Mag nail set in S. side wood post, 1' a.g., 20.1'
B - Mag nail set in W. side wood post, 1' a.g., 24.3'



The Harrison monument was set over a stone found.
A BCS record of February 18-19, 1869 states, with respect to this corner, "Reestablished from trees. Set two Rocks. One 9.5 1/2.5 in +. Top one 12.8 by 3 1/2 marked "1" on top." No recent BCS tie cards were found referencing this corner.
Excavation was performed at this corner on March 15, 2018. Prior to excavation, no specific survey monuments were known to exist, though a pile of rocks was clearly visible at the intersection of fences to the north, east and west. It is noted that the fences to the north and east do not extend to the corner, as shown on the diagram. The fence to the west is ancient, remaining in the form of fragments of fence on the ground.
Excavation in this vicinity revealed numerous rocks, as would be expected given the pile of rocks present prior to excavation. Fragments of an old wood post were found in the ground below the pile of rocks. Adjacent to these wood fragments, a substantial rock was found at 2 feet deep. The stone had a flat top and appeared to be vertical, but bore no specific, visible marks. The top of the stone measured 11 inches E-W by 8 inches N-S, matching two of the dimensions called in the 1869 record. However, the stone measured at least 7 inches tall on the south side. No stones positively matching the dimensions and markings of the two record stones were identified. The stone at 2 feet deep was situated immediately west of the fragments of post, in line with the fences to the east and west and slightly west of the fence to the north. The stone was held as the best available evidence of the corner. A Harrison monument was set over the top, center of the stone to mark the corner. Several rocks were set around the monument.
This corner was originally established as a wood post in 1821.




Kenneth E. Hedge, County Surveyor


James S. Swift, IN LS 20200054
April 11, 2018

Marion Township

Section 22
T20N, R2E

Section 27
T20N, R2E

SECTION CORNER RECORD

BOONE COUNTY SURVEYOR'S OFFICE

NE 800-1000

State Plane grid coordinates NAD83 (CORS96):

North: 1789257.70 East: 3177223.13 (U.S. survey feet)

Type of monument: Harrison, 4" disk 'Section Corner'

Depth: One inch below adjacent road surface

Indiana tie card references:

IN02_T20NR2E22_80 IN02_T20NR2E23_72

IN02_T20NR2E27_08 IN02_T20NR2E26_00

CORNER WITNESS DETAIL

SCALE 1" = 40'

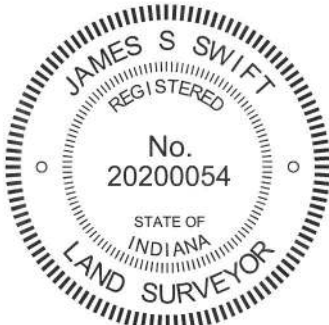
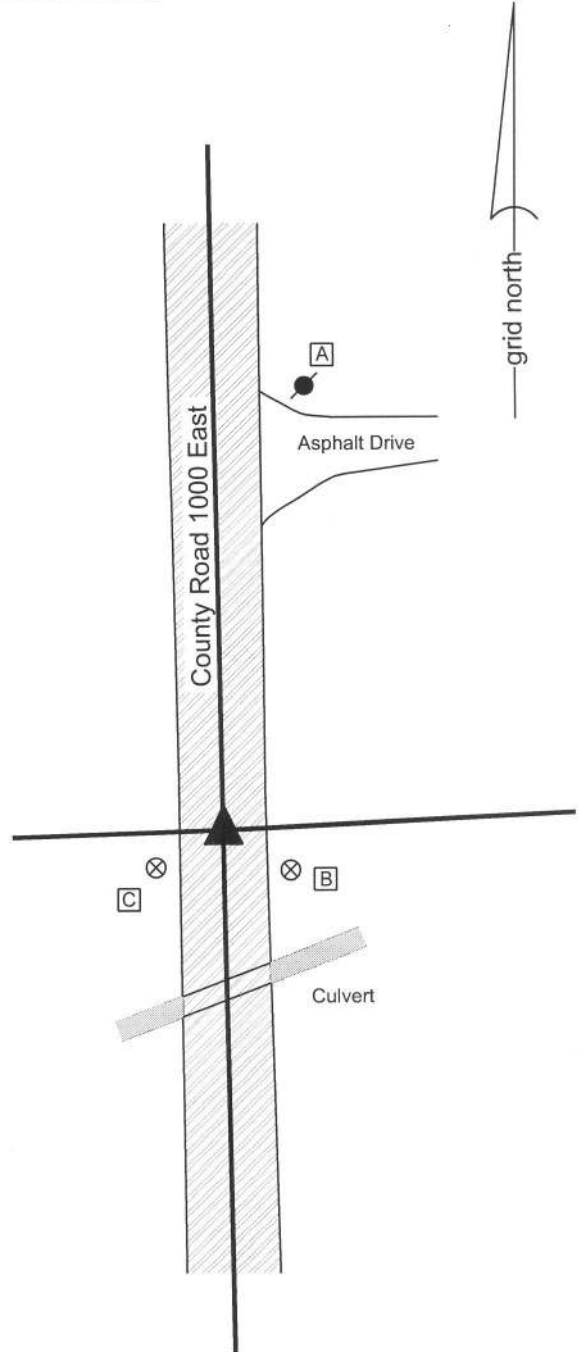
- A - Mag nail set in S.W. side power pole, 2' a.g., 92.7'
- B - Boone County witness mark, flush, 16.25'
- C - Boone County witness mark, flush, 15.9'

Boone County witness mark is a 3/8" diameter x 2' long rebar bearing a metal cap stamped "Boone County Witness Point."

The harrison monument was set over a stone found.

A BCS record of October 9-10, 1879 states "Reest. by running from D South 80.09 to 1/4 sec. corner between secs 26 & 27. Set two Rocks lower one 9.18.10 in + on top side. Upper one 21.4.10 in + on top." No recent BCS tie cards were found referencing this corner.

Excavation was performed at this corner on October 15, 2013. Prior to excavation, a 1/2 inch diameter rebar was found at 4 inches deep in a hole in the asphalt. Excavation revealed fragments of a wood stake found at 24 inches deep, south of the rebar. Further excavation revealed a stone found at 31 inches deep. The stone was fully embedded in the clay layer below the road bed. At most corners, the corner stones are found to be embedded in the clay layer with the top of the stone either at the top of the clay layer or protruding a few inches into the base of the road bed. At this corner the stone was approximately 1 foot deep in the clay layer. This is not typical but may be explained by the fact that the corner is immediately north of and adjacent to an open ditch. Early dredging of the ditch before the road bed was fully established could have resulted in substantial amounts of clay placed above the stone. It is notable that the clay layer begins at 18 inches from the surface of the road, which elevation is actually higher than the surrounding ground. The top 5 inches of the stone were exposed, at which point it measured approximately 9 inches N-S by 5 inches E-W. A distinct etched "+" mark was visible on the east side of the stone, 2 inches from the top. Probing indicated that another stone was situated directly below the exposed stone, at approximately 2 feet from the top of the top stone. With the etched mark and the dimensions approximating those described in the 1879 record, the stone was accepted as marking the corner. A harrison monument was set directly above the top, center of the stone, in line with the etched "+" mark on the east side. The rebar, removed during excavation, had been one foot north of the stone. This corner was originally established as a wood post in 1821.



Kenneth E. Hedge
Kenneth E. Hedge, County Surveyor

James S. Swift
James S. Swift, IN LS 20200054
February 5, 2015

Marion Township

Section 22 T20N, R2E	Section 23 T20N, R2E
Section 27 T20N, R2E	Section 26 T20N, R2E

PHOTOGRAPHIC DOCUMENTATION

Date of photography: October 15, 2013

View of the stone from above and west.



Close up of the stone, showing the etched mark on the west side.



View of the stone from above and north.



View from above the stone, looking north along County Road 1000 East.



For details and documentation, refer to related sheet "Section Corner Record."