

SECTION CORNER RECORD

NE 100-900

BOONE COUNTY SURVEYOR'S OFFICE

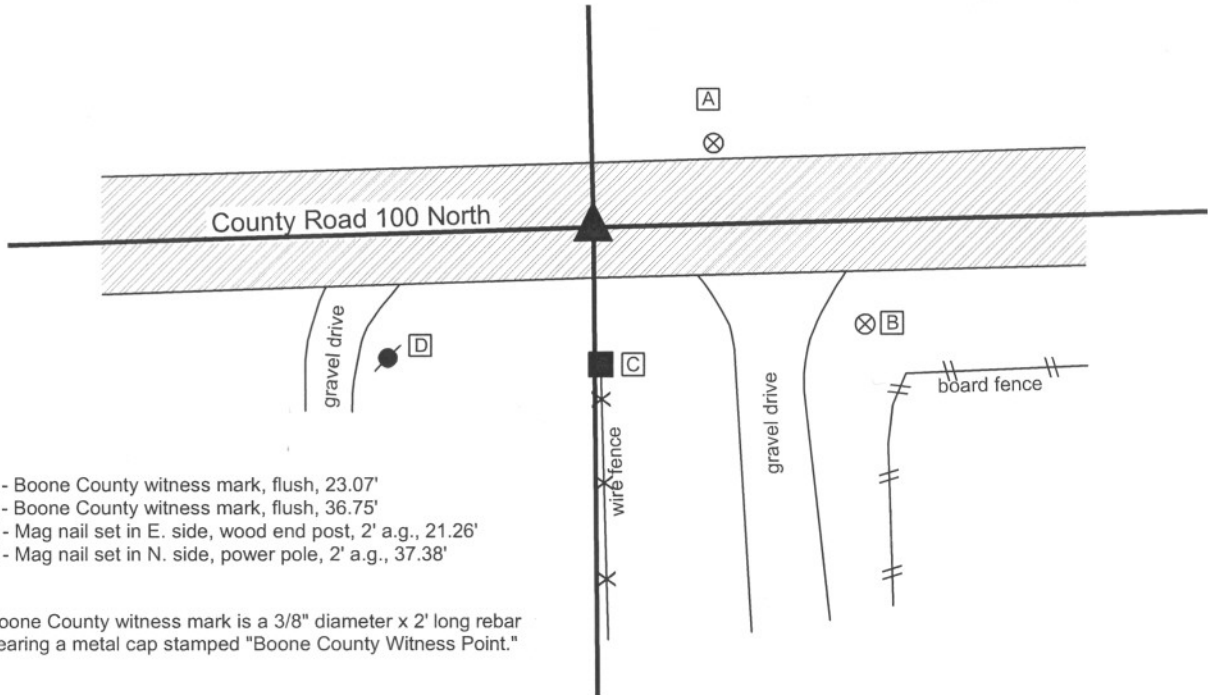
State Plane grid coordinates NAD83 (NSRS 2007):
 North: 1751821.74 East: 3172457.97 (U.S. survey feet)

Type of monument: Harrison, 4" disk 'Section Corner'
 Depth: One inch below adjacent road surface

Indiana tie card references:
 IN02_T19NR2E27_72 IN02_T19NR2E28_80
 IN02_T19NR2E33_08 IN02_T19NR2E34_00

CORNER WITNESS DETAIL

SCALE 1" = 30'
 0' 15' 30'



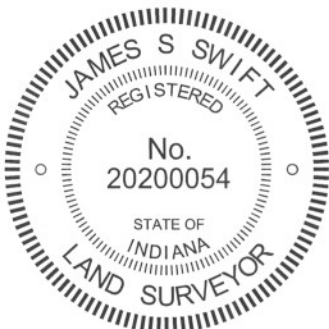
- A - Boone County witness mark, flush, 23.07'
- B - Boone County witness mark, flush, 36.75'
- C - Mag nail set in E. side, wood end post, 2' a.g., 21.26'
- D - Mag nail set in N. side, power pole, 2' a.g., 37.38'

Boone County witness mark is a 3/8" diameter x 2' long rebar bearing a metal cap stamped "Boone County Witness Point."

The harrison monument was set over a stone found.

A BCS tie card dated June 14, 1971 states "no stone, RRR put in." No specific description of this corner was found in the old BCS Surveyor's Record. This corner was excavated on August 23, 2010. Prior to excavation, a nail was found at the surface. Excavation revealed 3 rebars below the nail, generally surrounding the position of the nail. A railroad rail on end was found at 9 inches deep, directly below the position of the nail. Further excavation revealed three stones. The top two stones were found at 21 inches deep, situated next to each other, both embedded fully in the clay layer below the road. The north stone was 8x6x5 inches. The south stone was 10x7x7 inches. The third stone was below the top two, approximately centered between them, measuring 7x6x5 inches and situated at 27 inches deep. The stones were in line with the fence to the south and at the center of the road. The bottom stone is 1.8 feet south and 0.8 feet west of the nail and railroad rail, both of which were removed during excavation, along with the rebars and top two stones. The statement "no stone" on the 1971 tie card is clearly incorrect and also indicates that this crew was searching for, but did not find a corner stone. The found stones fit most characteristics of section corner stones, being embedded in the clay below the road and at the intersection of the center of the road with the prolonged line of the fence to the south. The situation of two stones next to each other above a third stones is not typical, but the stones clearly appeared to have been purposely set to mark the corner. The top center point of the lower stone was held as marking the corner and the harrison monument was set directly over this point. The lower stone was left in place and all other monuments were removed during excavation.

This corner was originally established as a wood post in July, 1821.



Kenneth E. Hedge
 Kenneth E. Hedge, County Surveyor

James S. Swift
 James S. Swift, IN LS 20200054
 July 25, 2011

Union Township

Section 28 T19N, R2E	Section 27 T19N, R2E
Section 33 T19N, R2E	Section 34 T19N, R2E

PHOTOGRAPHIC DOCUMENTATION

Date of photography: August 23, 2010

The railroad rail exposed.



The north top stone.



The south top stone (right) and the lower stone as first exposed.



View from the north, looking across the lower stone towards the post and trees to the south.



The lower stone.



For details and documentation, refer to related sheet "Section Corner Record."

SECTION CORNER RECORD

NE 100-950

BOONE COUNTY SURVEYOR'S OFFICE

State Plane grid coordinates NAD83 (NSRS 2007):
North: 1751886.92 East: 3175123.28 (U.S. survey feet)

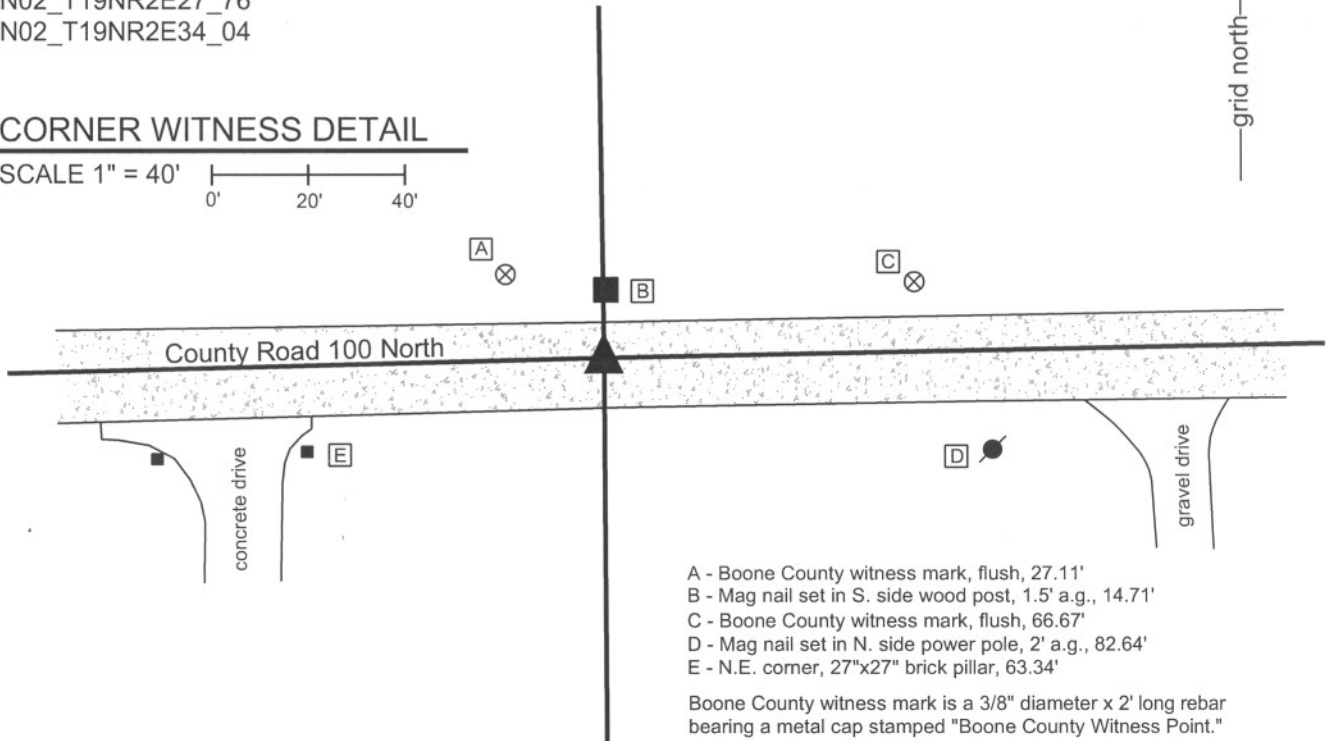
Type of monument: Harrison, 4" disk 'Section Corner'
Depth: Six inches below adjacent gravel road surface.

Indiana tie card references:
IN02_T19NR2E27_76
IN02_T19NR2E34_04



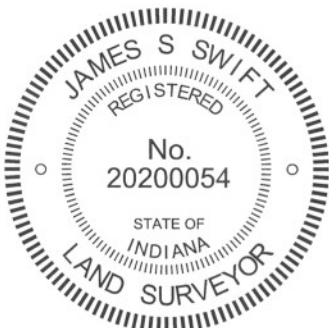
CORNER WITNESS DETAIL

SCALE 1" = 40'
0' 20' 40'



- A - Boone County witness mark, flush, 27.11'
 - B - Mag nail set in S. side wood post, 1.5' a.g., 14.71'
 - C - Boone County witness mark, flush, 66.67'
 - D - Mag nail set in N. side power pole, 2' a.g., 82.64'
 - E - N.E. corner, 27"x27" brick pillar, 63.34'
- Boone County witness mark is a 3/8" diameter x 2' long rebar bearing a metal cap stamped "Boone County Witness Point."

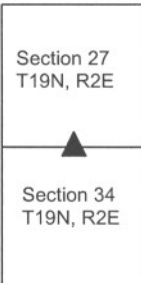
The harrison monument was set in place of a railroad rail found. A BCS tie card dated July 9, 1968 states "No stone." The tie card does not state more information about a monument set, but it is most likely that the found railroad rail was set at the time of the creation of the 1968 tie card. It is known that setting a section of railroad rail vertically was a common procedure of field crews from this office at that time. No specific descriptions of this corner were found in the old BCS Surveyor's Record. This corner was excavated on August 23, 2010. Prior to excavation the top of a piece of railroad rail was found, apparently leaning, in the approximate center of the road 2 feet west of a post on the south side of the road. Excavation revealed that the railroad rail was leaning significantly to the west. Holding the position of the bottom of the rail and standing the rail vertical, the top of the rail was approximately 9 inches east of the position as found prior to excavation. The 1968 ties are not conclusive, but the position of the rail as stood up fits well with the fence post on the north side of the road, which is agreement with the graphical representation of the corner on the 1968 tie card. The top of the rail had been at the surface of the gravel road and it is apparent that a road grader likely hit the top of the rail and leaned it to the west. Further excavation revealed a bolt spike near the surface of the road approximately 2 feet south and 4 feet west of the rail. No source information for this spike is known. No other monuments or evidence were found in an area of excavation extending 4 feet north, 4 feet east, 7 feet west and 7 feet south of the position of the top of the rail as originally found. The road bed is only 8 to 12 inches deep in this area. Excavation extended to a minimum of 18 inches deep, well into the clay layer below the road and well below the depth at which a corner stone or any other evidence of the corner might be found. The railroad rail was removed and a harrison monument was set in the position of the rail as stood vertically. This corner was originally established as a wood post in July, 1821.



Kenneth E. Hedge
Kenneth E. Hedge, County Surveyor

James S. Swift
James S. Swift, IN LS 20200054
July 25, 2011

Union Township



SECTION CORNER RECORD

NE 100-1000

BOONE COUNTY SURVEYOR'S OFFICE

State Plane grid coordinates NAD83 (NSRS 2007):

North: 1751938.83 East: 3177774.44 (U.S. survey feet)

Type of monument: Harrison, 4" disk 'Section Corner'

Depth: One inch below adjacent road surface

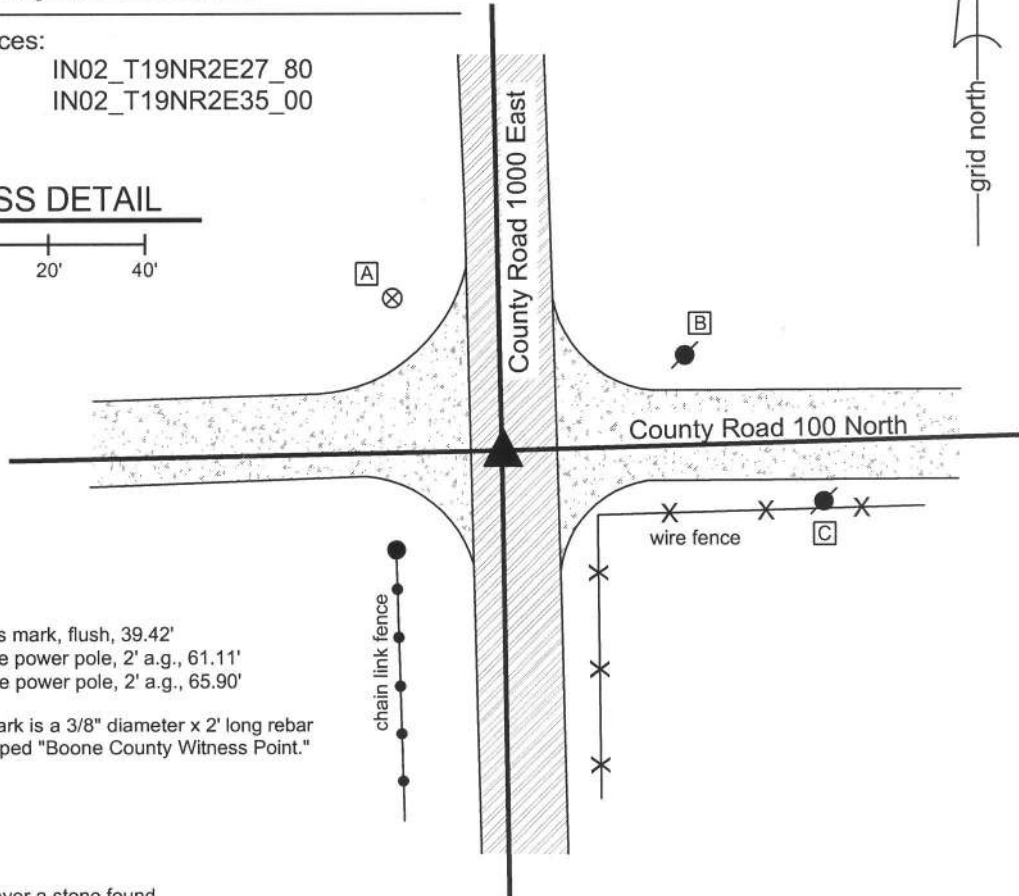
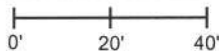
Indiana tie card references:

IN02_T19NR2E26_72 IN02_T19NR2E27_80

IN02_T19NR2E34_08 IN02_T19NR2E35_00

CORNER WITNESS DETAIL

SCALE 1" = 40'



- A - Boone County witness mark, flush, 39.42'
- B - Mag nail set in W. side power pole, 2' a.g., 61.11'
- C - Mag nail set in W. side power pole, 2' a.g., 65.90'

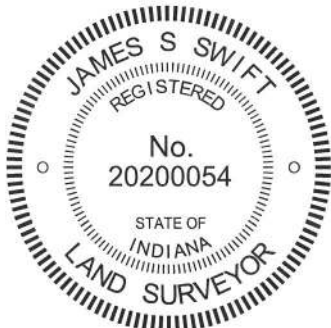
Boone County witness mark is a 3/8" diameter x 2' long rebar bearing a metal cap stamped "Boone County Witness Point."

The harrison monument was set over a stone found.

A BCS tie card dated August 6, 1974 states "No stone found." No specific descriptions of this corner were found in the old BCS Surveyor's Record, beyond the original establishment of the corner as a wood post by federal surveyors.

This corner was excavated on June 17, 2010. Prior to excavation, a rebar was visible at the surface. Excavation revealed a piece of railroad rail on end at 6 inches deep, adjacent to the rebar. The rebar was situated along the east side of the rail. Further excavation revealed a large stone found at 33 inches deep. The stone is 17 inches N-S by 26 inches E-W and was measured to be 22 inches tall at the N. side. The stone is embedded in the clay layer below the road bed, with the top of the stone protruding approximately 3 inches into the bottom of the road bed. The characteristics of this stone, including the depth, being embedded in the clay, the orientation aligned with cardinal directions and the position at the intersection of the two county roads are all consistent with other corner stones found. The fact that the stone is neither vertical nor has any specific identifiable markings is consistent with the fact that it is not mentioned in the BCS Surveyor's Record, as typically only the stones which can be positively identified as being set by County Surveyors are set vertically with markings, while the remaining cornerstones, including those found and held by the old County Surveyors, tend to have the same characteristics as the stone found at this corner. The harrison monument was set directly over the top, center of the stone. The rebar and rail, both removed during excavation, were 3.3 feet north and 0.3 and 0.2 feet east, respectively of the harrison. The 1974 reference to "no stone" indicates that a stone was searched for but not found. It is most likely that the railroad rail was set at that time, after the erroneous determination that other evidence, in the form of a stone, was not present.

This corner was originally established as a wood post 1821.



Kenneth E. Hedge

 Kenneth E. Hedge, County Surveyor

James S. Swift

 James S. Swift, IN LS 20200054
 July 25, 2011

Union Township

Section 27 T19N, R2E	Section 26 T19N, R2E
Section 34 T19N, R2E	Section 35 T19N, R2E

PHOTOGRAPHIC DOCUMENTATION

Date of photography: June 17, 2010

View of the stone from the north.



The stone being exposed. View from above.



The stone exposed. View from above.



View from above the stone, looking east along County Road 100 North.



View from above the stone, looking south along County Road 1000 East.



For details and documentation, refer to related sheet "Section Corner Record."

SECTION CORNER RECORD

BOONE COUNTY SURVEYOR'S OFFICE

NE 150-900

State Plane grid coordinates NAD83 (NSRS 2007):
 North: 1754476.726 East: 3172401.65 (U.S. survey feet)

Type of monument: Stone (chiseled hole on top of stone)
 Depth: Approximately 8 inches below top of tilled field

Indiana tie card references:
 IN02_T19NR2E27_36 IN02_T19NR2E28_44

CORNER WITNESS DETAIL

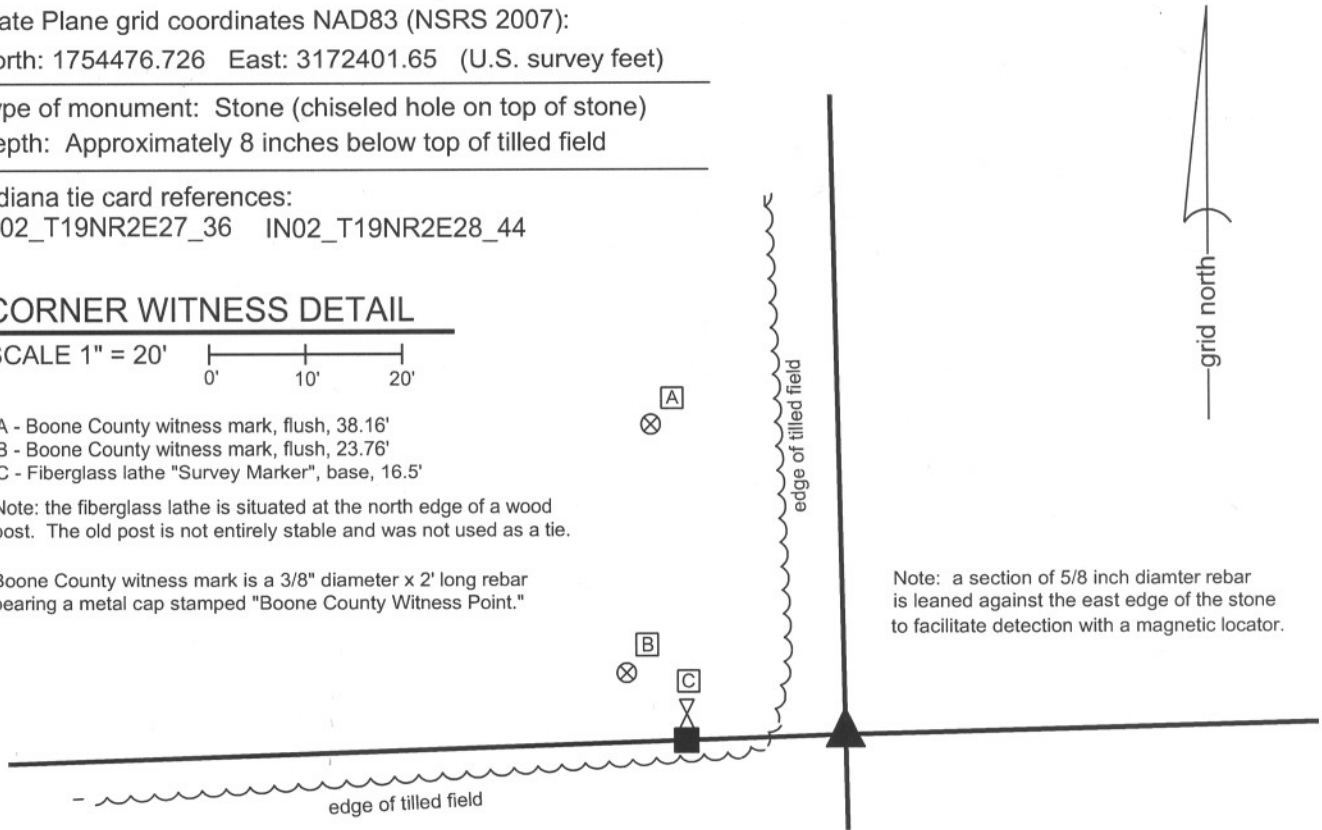
SCALE 1" = 20'

- A - Boone County witness mark, flush, 38.16'
- B - Boone County witness mark, flush, 23.76'
- C - Fiberglass lathe "Survey Marker", base, 16.5'

Note: the fiberglass lathe is situated at the north edge of a wood post. The old post is not entirely stable and was not used as a tie.

Boone County witness mark is a 3/8" diameter x 2' long rebar bearing a metal cap stamped "Boone County Witness Point."

Note: a section of 5/8 inch diameter rebar is leaned against the east edge of the stone to facilitate detection with a magnetic locator.

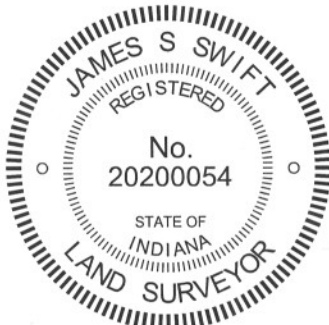


The stone was found in place.

No specific descriptions of this corner were found in the BCS Surveyor's Record. However, the corner is mentioned as the terminal point for measurements on records dated 1834, 1852, 1854 and 1868 indicating that some form of monument, most likely a stone, existed at the time of those surveys. No recent BCS tie cards were found referencing this corner. A survey by the Schneider Corporation, dated December 22, 2005, certified by Carolina L. Candler, shows the corner as being established at a mathematical split on line between the section corners to the north and south. The survey does note that a fence post lies 10.5 feet north and 18.7 feet west of the calculated position of the corner.

This corner was investigated in November, 2011. The fence post (wood) referenced in the Schnieder survey was found and was held as evidence of the east-west half section line for purposes of determining the most likely position of the corner. It is noted that the wood post appears to represent the west side of an old gate, with fence cut off towards the west and gate brackets on the east side. The fencing to the west has been removed but the post clearly represented the easterly terminus of a fence and the post is near the east end of a boundary between tilled field on the south and woods on the north. A portion of old north-south fence was found beginning approximately 450 feet north of the corner and extending to approximately 830 feet north of the corner. Holding the post as evidence of the east-west half section line and the old fence as evidence of the east line of the northeast quarter of section 28 it was evident that the corner is most likely approximately 1 rod (16.5) feet east of aforementioned wood fence post. Excavation at this position on November 18, 2011 revealed a stone found at exactly 1 rod east of the post. The corner is near the edge of a tilled field. The stone is approximately 8 inches below the surface of the tilled field and does not appear to have been disturbed by farming activities. The stone is of sandstone material and is vertical, with the bottom embedded in the clay layer below the field. The stone measures 7 inches by 7 inches near the top and is 16 inches tall on the east side. The total N-S, E-W dimensions of the stone were not measured, but it is noted that the base appears to be larger than the top. The stone fits precisely with the evidence of lines to the west and north as discussed above and the position of the stone being 1 rod from an old gate post matches patterns found at other corners throughout the county. The stone was left in place. A hole was drilled into the top, center of the stone to mark the specific position of the corner. A 30 inch length of 5/8 inch diameter rebar was placed along the east side of the stone, driven to 1 inch below the top of the stone, for purposes of finding the stone with a magnetic locator. The rebar should not be interpreted as marking the corner, but is intended to aid the field surveyor in finding the stone.

This corner was originally established as a wood post in July, 1821.



Kenneth E. Hedge
 Kenneth E. Hedge, County Surveyor

James S. Swift
 James S. Swift, IN LS 20200054
 March 1, 2012

Union Township

Section 28 T19N, R2E	▲	Section 27 T19N, R2E
-------------------------	---	-------------------------

PHOTOGRAPHIC DOCUMENTATION

Date of photography: November 1 & 18, 2011

The post 1 rod west of the corner.



The stone with the east side exposed.



View from the east, looking across the stone (in shadows) and to the post 1 rod west.



Exposed stone with a hole drilled on top.



The stone with a hole drilled on top and a 5/8 inch rebar on the east side, no longer exposed.



For details and documentation, refer to related sheet "Section Corner Record."

SECTION CORNER RECORD

NE 150-1000

BOONE COUNTY SURVEYOR'S OFFICE

State Plane grid coordinates NAD83 (NSRS 2007):

North: 1754599.73 East: 3177722.87 (U.S. survey feet)

Type of monument: Harrison, 4" disk 'Section Corner'

Depth: One inch below adjacent road surface

Indiana tie card references:

IN02_T19NR2E26_44 IN02_T19NR2E27_36


The harrison monument was set in place of a bolt spike found. A BCS tie card dated August 6, 1974 states "stone found." No specific descriptions of this corner were found in the old BCS Surveyor's Record.

This corner was excavated on August 16, 2010. Prior to excavation the head of a bolt spike was visible at 5 inches deep, apparently bent. Excavation revealed that the spike is 16 inches long, square shafted (1/2 inch on each side), with a bolt like head. Most of the shaft was straight, vertical and apparently undisturbed while the top of the spike was bent. A 5x5 foot square, centered in all directions on the bolt spike, was excavated to a minimum depth of 2 feet deep, which extended well into the clay layer below the road and beyond the depth at which a cornerstone or other evidence might reasonably be expected to be found. The single firm distance tie from 1974 was not available. The position of the bolt spike does fit with the graphic representation of the corner as being at the center of the road and at the extension of the fence to the east. It is noted that the tie card also shows a fence to the west, but the field notes from which the tie card were made does not show a fence to the west. The 1939 aerial photo shows a clear line of occupation to the east on the north side of a lane. The current fence to the east appears to be built since 1974, but the location of the current fence fits with the photographic evidence from the 1939 photo. Hence, the position of the bolt spike fits with both the graphical representation on the tie card and the 1939 photographic evidence. The presence of a 16 inch bolt spike with no other monuments is not consistent with evidence found associated with other tie cards. It has been observed that the term "stone found" on other 1974 tie cards appears to represent that a stone was found, removed and replaced with a metal monument, either a railroad rail set on end or a 1/2 inch diameter rebar. Bolt headed spikes have not been found at other corners documented in 1974. The source of this bolt spike is not known. However, given the lack of any other physical evidence in the roadway and the fact that the bolt spike does fit the graphical evidence on the 1974 tie card and the photographic evidence of the 1939 aerial photo, the bolt spike was accepted as representing the perpetuation of the position of whatever monument was set in 1974 and was held as the best available evidence of the position of the stone found in 1974 and the best available evidence of the corner. A harrison monument was set in the position of the straight, vertical portion of the shaft of the bolt spike.

It is also noted that this corner is approximately 2 feet west and 12 feet north of the midpoint between the corners to the north and south. The evidence of distances to remote corners is not considered superior to the local evidence of the bolt spike, which is supported by evidence of the stone found in 1974 and the photographic evidence of the 1939 aerial photo.

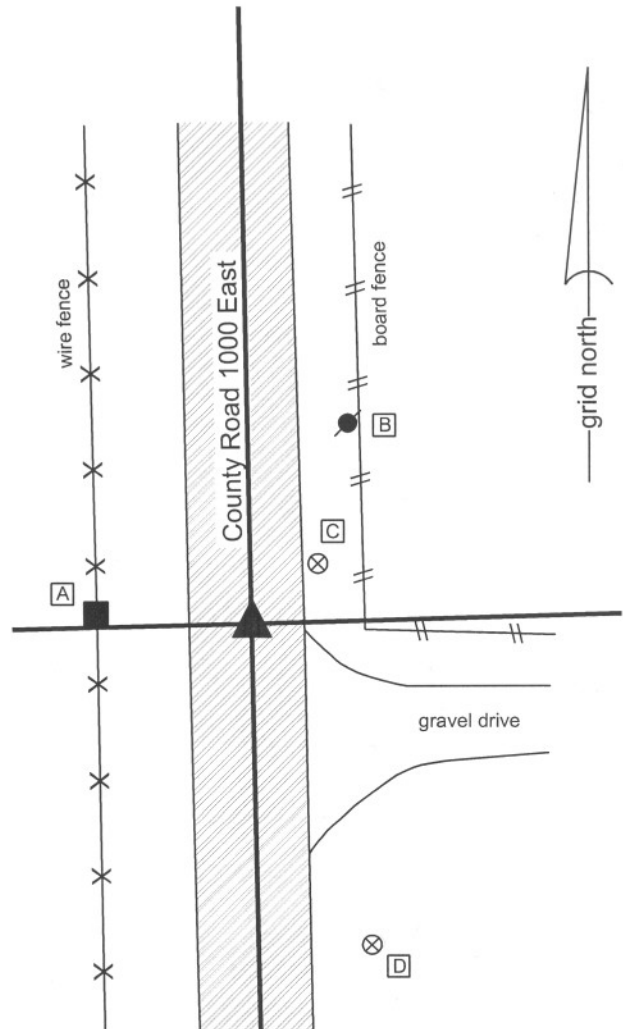
This corner was originally established as a wood post in July, 1821.

CORNER WITNESS DETAIL

SCALE 1" = 30' 

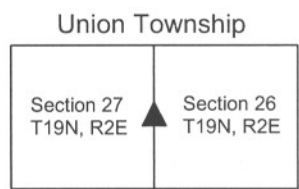
- A - Mag nail set in E. side wood post, 2' a.g., 24.13'
- B - Mag nail set in S. side power pole, 2' a.g., 33.76'
- C - Boone County witness mark, flush, 14.01'
- D - Boone County witness mark, flush, 53.54'

Boone County witness mark is a 3/8" diameter x 2' long rebar bearing a metal cap stamped "Boone County Witness Point."



Kenneth E. Hedge
 Kenneth E. Hedge, County Surveyor

James S. Swift
 James S. Swift, IN LS 20200054
 July 25, 2011



SECTION CORNER RECORD

NE 200-900

BOONE COUNTY SURVEYOR'S OFFICE

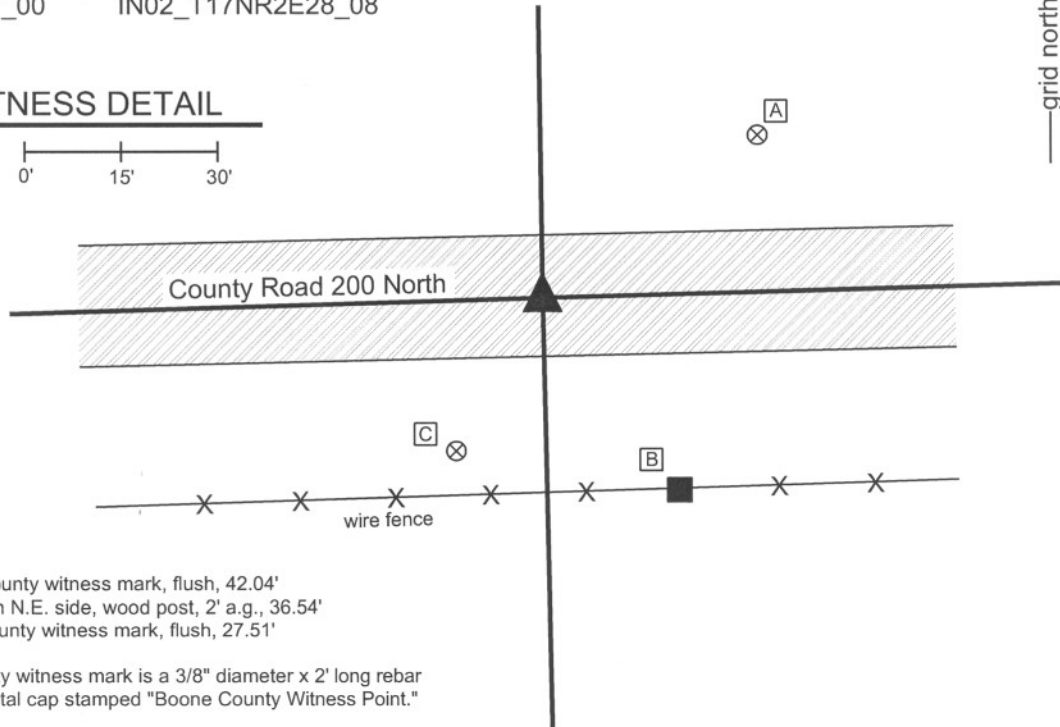
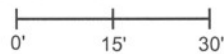
State Plane grid coordinates NAD83 (NSRS 2007):
 North: 1757107.36 East: 3172348.82 (U.S. survey feet)

Type of monument: Harrison, 4" disk 'Section Corner'
 Depth: One inch below adjacent road surface

Indiana tie card references:
 IN02_T19NR2E21_80 IN02_T22NR2E22_72
 IN02_T17NR2E27_00 IN02_T17NR2E28_08

CORNER WITNESS DETAIL

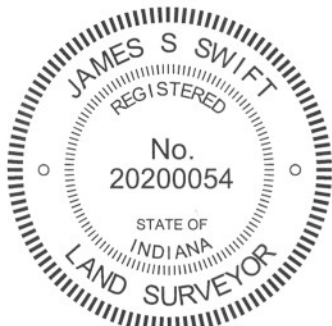
SCALE 1" = 30'



- A - Boone County witness mark, flush, 42.04'
- B - Mag set in N.E. side, wood post, 2' a.g., 36.54'
- C - Boone county witness mark, flush, 27.51'

Boone County witness mark is a 3/8" diameter x 2' long rebar bearing a metal cap stamped "Boone County Witness Point."

The harrison monument was set over a stone found.
 A BCS of August 10-13, 1854 states "Reestablished. Set Rock 12 by 16 in. There are no bearing trees." A BCS tie card dated July 11, 1978 states "No stone found." A survey by the Schneider Corporation, dated December 22, 2005, certified by Carolina L. Candler, states "Stone found 0.6' below surface with 5/8" rebar beside (mag nail found 1.1' S, 1.2' E of stone 0.2' below surface) No B.C.S Ref. ties."
 This corner was excavated on September 7, 2010. Prior to excavation an aluminum disk stamped with the name Schneider Corp. was found at the surface in the northwest corner of a 2 foot by 2 foot area of patched asphalt. Excavation revealed that the aluminum disk was placed upon a metal pin approximately 7 inches long. A stone was found at 7 inches deep, directly below the metal pin. The stone has a distinguishable marks on the top, which may be marks from a road grader or may be purposely etched. With 9 inches exposed the stone measures 8 inches E-W by 12 inches N-S, fully embedded in the clay layer below the road, with approximately 5 inches of the stone protruding into the bottom of the road bed. The stone was left undisturbed below 8 inches from the top and the full height of the stone was not measured. Hence, the stone was not solidly confirmed as being the record stone from 1854. It is noted that the N-S dimension does match the 1854 record and that BCS records prior to 1860 tend to note only two dimensions on a stone, typically the height and the largest horizontal dimension. The stone was held as marking the corner. A harrison monument was broken off at 6 inches tall and set directly over the stone, in the position of the disk found prior to excavation. The top of the stone was encased in concrete along with the harrison monument.
 This corner was originally established as a wood post in July, 1821.



Kenneth E. Hedge
 Kenneth E. Hedge, County Surveyor

James S. Swift
 James S. Swift, IN LS 20200054
 July 25, 2011

Marion Twp

Section 21 T19N, R2E	Section 22 T19N, R2E
-------------------------	-------------------------

Union Twp

Section 28 T19N, R2E	Section 27 T19N, R2E
-------------------------	-------------------------

PHOTOGRAPHIC DOCUMENTATION
Date of photography: September 7, 2010

View of the stone as first exposed.



View of the stone partially exposed.



View from the east, looking across the stone and west along County Road 100 North, across U.S. 421



View of the stone partially exposed.



View of the stone from above, immediately prior to the top being encased in concrete.



For details and documentation, refer to related sheet "Section Corner Record."

SECTION CORNER RECORD

NE-200-950

BOONE COUNTY SURVEYOR'S OFFICE

State Plane grid coordinates NAD83 (NSRS 2007):
North: 1757178.70 East: 3175007.10 (U.S. survey feet)

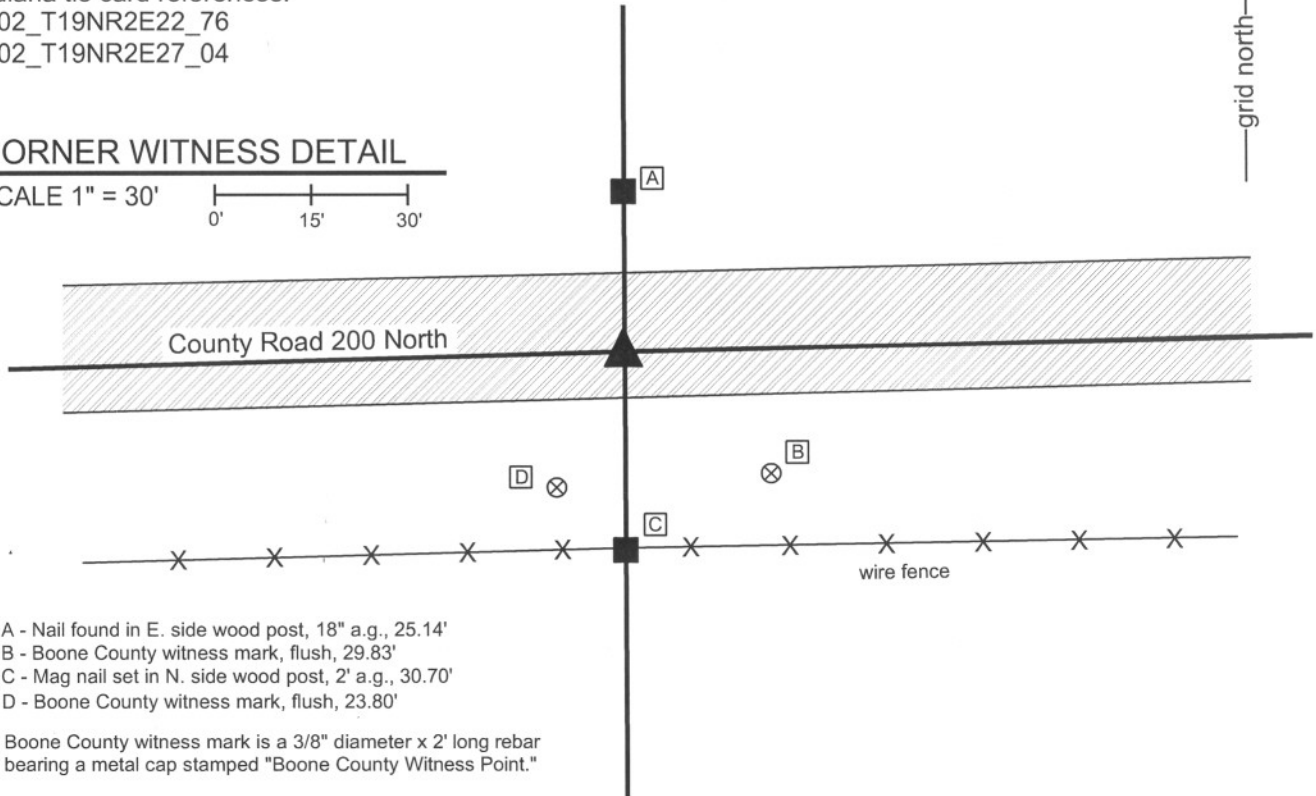
Type of monument: Harrison, 4" disk 'Section Corner'
Depth: One inch below adjacent road surface

Indiana tie card references:
IN02_T19NR2E22_76
IN02_T19NR2E27_04



CORNER WITNESS DETAIL

SCALE 1" = 30'



- A - Nail found in E. side wood post, 18" a.g., 25.14'
- B - Boone County witness mark, flush, 29.83'
- C - Mag nail set in N. side wood post, 2' a.g., 30.70'
- D - Boone County witness mark, flush, 23.80'

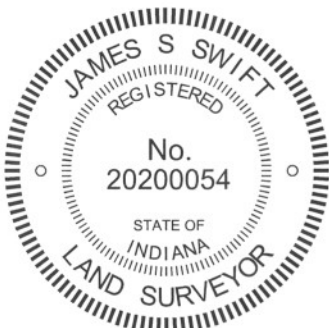
Boone County witness mark is a 3/8" diameter x 2' long rebar bearing a metal cap stamped "Boone County Witness Point."

The harrison monument was set in place of a rebar found.

A BCS tie card dated July 11, 1974 states "Lg. stone found almost on surface." A BCS record of August 3, 1852 shows the corner but does not give a description.

This corner was excavated on August 26, 2010. Prior to excavation, a mag nail was found in the road 1 inch deep. Excavation revealed a 1/2 inch diameter rebar at 6 inches deep, slightly southeast of the mag nail. Excavation of an area extending 1.5 feet South, 4.5 feet North, 2 feet East and 2 feet West of the nail and rebar revealed no other evidence found. The position of the found rebar at the southerly extension of a fence to the north fits with the graphic representation of the corner shown on the 1974 tie card. However, the one remaining distance tie from the 1974 tie card does not work with the found monuments. Incorrect distance ties shown on tie cards from 1974 have been found and confirmed at several other corners. The presence of the nail and rebar, the lack of any other found evidence, and the correlation of the position of the rebar with the graphical representation on the tie card were accepted as better evidence of the corner than a single, possibly incorrect, distance tie. It has been observed at other corners that the term "stone found" on a tie card from the summer of 1974 generally indicates that a stone was found, removed and replaced with a metal monument, being either a railroad rail on end or a 1/2 inch rebar. The presence of the rebar is consistent with this observation. The position of the rebar was held as marking the corner and the harrison monument was set in its place.

This corner was originally established as a wood post in July, 1821.



Kenneth E. Hedge
Kenneth E. Hedge, County Surveyor

James S. Swift
James S. Swift, IN LS 20200054
July 25, 2011

Marion
Twp

Section 22
T19N, R2E

Union
Twp

Section 27
T19N, R2E

SECTION CORNER RECORD

NE-200-1000

BOONE COUNTY SURVEYOR'S OFFICE

State Plane grid coordinates NAD83 (NSRS 2007):

North: 1757236.74 East: 3177675.57 (U.S. survey feet)

Type of monument: Harrison, 4" disk 'Section Corner'

Depth: One inch below adjacent road surface

Indiana tie card references:

IN02_T19NR2E22_80

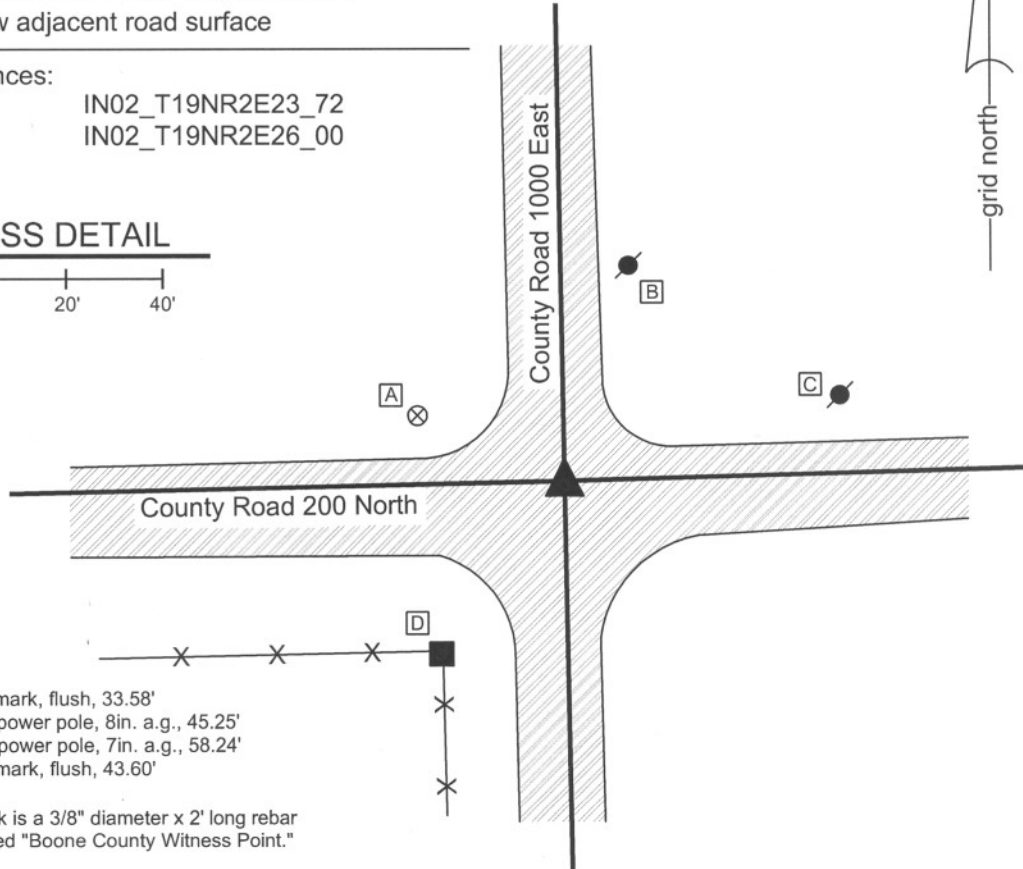
IN02_T19NR2E23_72

IN02_T19NR2E27_08

IN02_T19NR2E26_00

CORNER WITNESS DETAIL

SCALE 1" = 40'



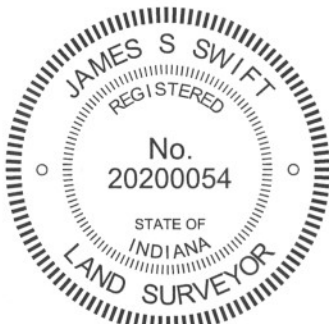
- A - Boone County witness mark, flush, 33.58'
- B - Nail found in S.W. side power pole, 8in. a.g., 45.25'
- C - Nail found in S.W. side power pole, 7in. a.g., 58.24'
- D - Boone County witness mark, flush, 43.60'

Boone County witness mark is a 3/8" diameter x 2' long rebar bearing a metal cap stamped "Boone County Witness Point."

The Harrison monument was set in place of a rebar found.

A BCS tie card dated July 11, 1974 states "found stone 16" deep w/ PK nail." No specific descriptions of this corner were found in the old BCS Surveyor's Record.

This corner was excavated on July 8, 2010. Prior to excavation, a mag nail was visible at the surface. Excavation revealed four additional monuments in three separate positions. A 5/8 inch rebar and iron pipe were found approximately below the mag nail. Another 5/8 inch rebar was found to the north and west. A 1/2 inch rebar was also found northeast of the mag nail. No stone was found and the preponderance of evidence indicates that the 1/2 inch rebar represents the position of the stone found in 1974. It has been observed at other corners that the term "stone found" on a tie card from the summer of 1974 generally indicates that a stone was found, removed and replaced with a metal monument, being either a railroad rail on end or a 1/2 inch rebar. The presence of the rebar is consistent with this observation. The 1/2 inch rebar fits with the distance ties shown on the 1974 tie card, whereas none of the other monuments fit with those distance ties. Furthermore, excavation revealed that the top 14 inches of the road bed are either asphalt (top two inches) or recent fill material (2 - 14 inches deep.) The two 5/8 inch rebars and the pipe were all well within the recent fill material, but the 1/2 inch rebar was at 14 inches, with the top of the being at the top of the older fill material. The 1/2 inch rebar was accepted as the best available evidence of the position of the stone found in 1974 and was held as marking the corner. A Harrison monument was set in its place. The mag nail, pipe and one rebar (all removed during excavation) had been 1.7 feet south and 0.6 foot west of the corner. The other 5/8 inch rebar had been 0.6 foot south and 1.9 feet west of the corner. This corner was originally established as a wood post in July, 1821.



Kenneth E. Hedge
Kenneth E. Hedge, County Surveyor

James S. Swift
James S. Swift, IN LS 20200054
July 25, 2011

Marion
Twp

Section 22 T19N, R2E	Section 23 T19N, R2E
Section 27 T19N, R2E	Section 26 T19N, R2E

Union
Twp