

# SECTION CORNER RECORD

NW 100-200

## BOONE COUNTY SURVEYOR'S OFFICE

State Plane grid coordinates NAD83 (2011):

North: 1750834.15 East: 3114224.09 (U.S. survey feet)

Type of monument: 5/8" rebar with metal cap stamped 'Boone County Surveyor'

Depth: 14 inches below adjacent ground

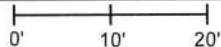
Indiana tie card references:

IN02\_T19NR1W27\_80 IN02\_T19NR1W26\_72

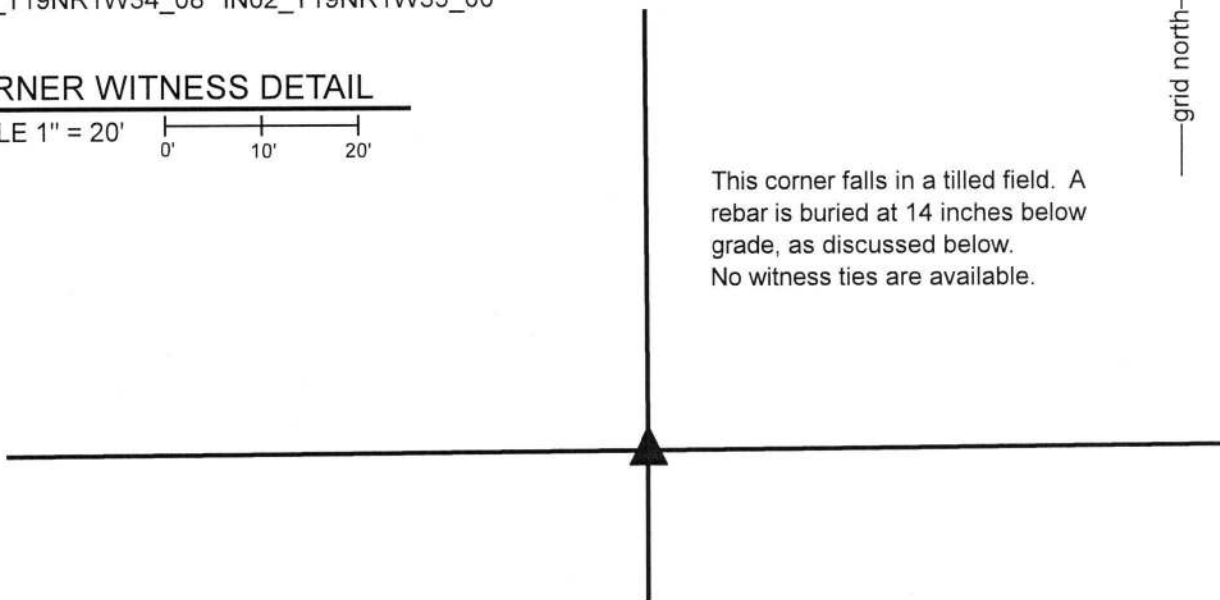
IN02\_T19NR1W34\_08 IN02\_T19NR1W35\_00

### CORNER WITNESS DETAIL

SCALE 1" = 20'



This corner falls in a tilled field. A rebar is buried at 14 inches below grade, as discussed below. No witness ties are available.



This corner is monumented by a 30 inch length of 5/8 inch rebar, set vertically and buried 14 inches below grade. The rebar has a metal cap stamped 'Boone County Surveyor' affixed to the top. A Harrison monument which was set at this corner in 2017 was destroyed during a fence removal project in the Spring of 2019. The rebar was set on September 25, 2019 in the same horizontal position as Harrison monument occupied previously.

The following narrative is verbatim per the original version of this document, dated January 10, 2018:

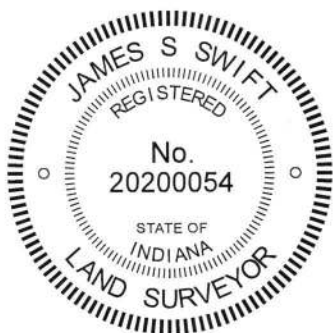
The Harrison monument was set in the position of an ancient wood corner post.

A BCS record of October 4, 1884 states, with respect to this corner, "Reestablished from stumps of both trees. Set Rock 29-16-9." A BCS record of March 11, 1895 states "see C Section 34, marked + the rock." The latter entry refers to the former.

No recent BCS tie cards were found referencing the corner.

This corner was excavated on November 9, 2017. The approximate position of the corner was computed with respect to the relative positions of evidence of the corners 1/2 and 1/4 mile west, respectively. An established east-west occupation line is visible in the form of an ancient fence which is generally not standing, being almost entirely on the ground, and the associated mound of dirt along the fence. Within a few feet of the computed position of the corner, an ancient wood corner post was found lying on the ground with various fencing attached. Substantial manual excavation around the post revealed several rocks and bricks, none of which were found to match the dimensions of the rock called for in the 1884 record. The position of the post was readily evident from its position on the ground, but fragments of the base of the post were minimal, as it appears that the post was of a type of wood prone to rotting underground. However, fragments of wire were found below the ground and the exact position of the corner was established at the point where fragments of underground wire were found extending in all four cardinal directions. A Harrison monument was set at this position.

This corner was originally established as a wood post in 1822.



*Kenneth E. Hedge*  
Kenneth E. Hedge, County Surveyor

*James S. Swift*  
James S. Swift, IN LS 20200054

January 10, 2018, updated December 3, 2019

Center Township

Section 27 T19N, R1W	Section 26 T19N, R1W
Section 34 T19N, R1W	Section 35 T19N, R1W

A diagram showing a 2x2 grid of sections. A small black triangle is placed at the intersection of Section 26 and Section 34, pointing upwards.

# SECTION CORNER RECORD

NW 100-250

## BOONE COUNTY SURVEYOR'S OFFICE

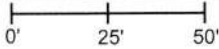
State Plane grid coordinates NAD83 (2011):  
North: 1750818.01 East: 3111577.81 (U.S. survey feet)

Type of monument: Harrison, 4" disk 'Section Corner'  
Depth: One inch below adjacent ground

Indiana tie card references:  
IN02\_T19NR1W27\_76 IN02\_T19NR1W34\_04

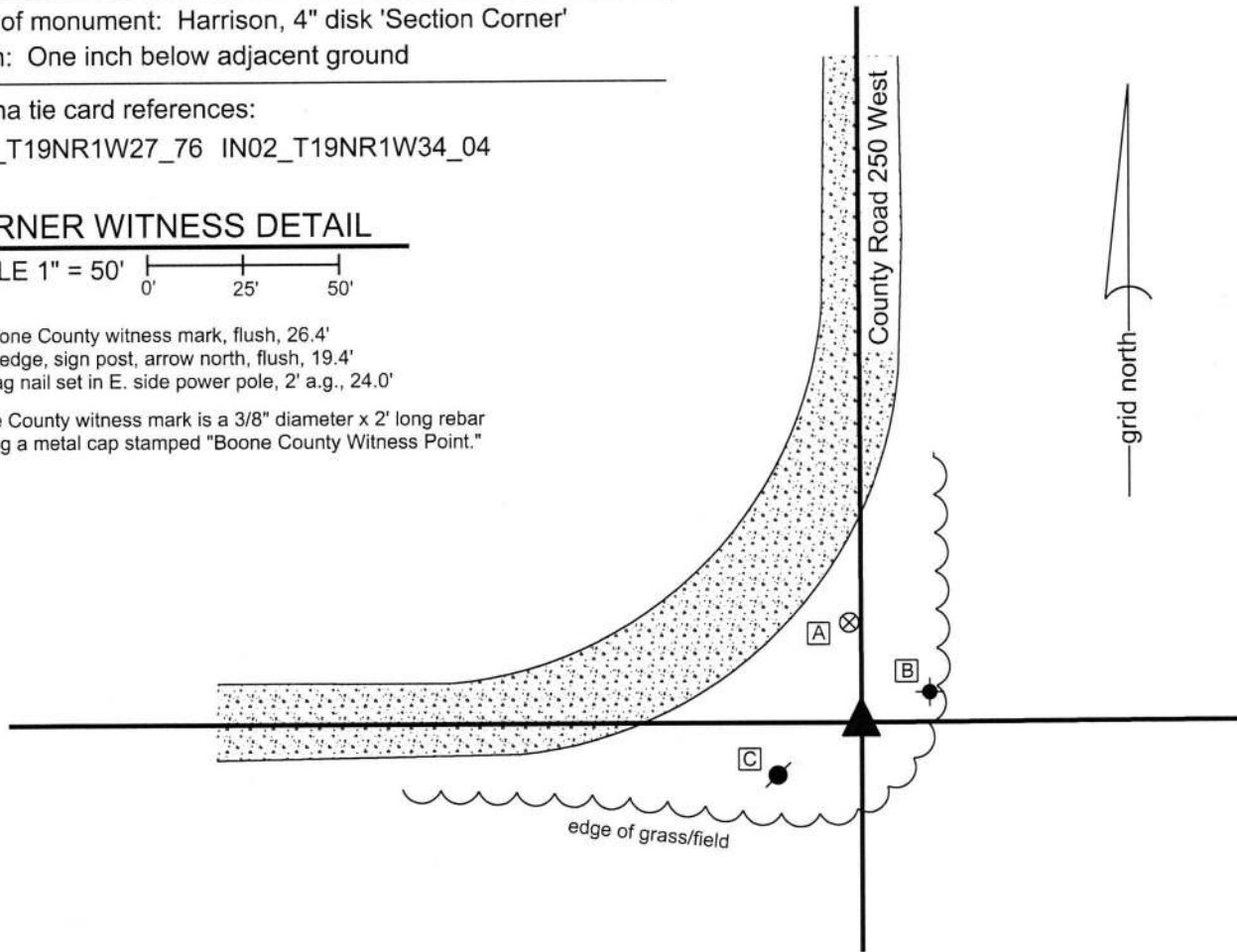
### CORNER WITNESS DETAIL

SCALE 1" = 50'



- A - Boone County witness mark, flush, 26.4'
- B - S. edge, sign post, arrow north, flush, 19.4'
- C - Mag nail set in E. side power pole, 2' a.g., 24.0'

Boone County witness mark is a 3/8" diameter x 2' long rebar bearing a metal cap stamped "Boone County Witness Point."



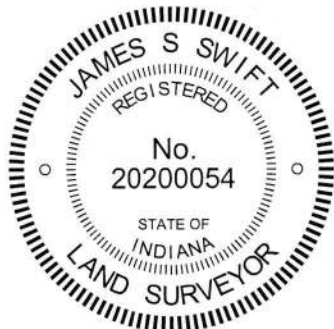
The Harrison monument was set in place of a vertical section of railroad rail found.

A BCS record of May 26, 1874 states, with respect to this corner, "Reestd from stump of the Red Oak. Set Rock 22x20x10 marked +." A BCS tie card dated November 14, 1968 states "no stone." This document does not specifically mention the railroad rail but it is believed most likely that the found rail was set at that time, in association with the creation of the tie card.


The position of the rail fits well with local evidence of the corner in the form of the existing roadways to the north and west and also fits reasonably well with remote evidence in the form of the prolongation of a standing fence which begins 1/4 mile east of the corner and continues to and beyond the corner 1/2 mile east (see corner NW 100-200).

Substantial excavation was performed at this corner on December 19, 2017. Excavation of an area extending 4 feet east, 4 feet north, 4 feet south and 6 feet west of the rail yielded no further evidence of the corner. Excavation was performed to 18 inches deep minimum, slightly into the clay layer below the soil. It is noted that the elevation of the ground at this corner is slightly below the surrounding fields to the east and south and that the corner is at the north edge of a shallow drainage swale. It is possible that the stone was previously removed during excavation/earthwork in the immediate vicinity of this corner.

The rail was accepted as marking the position of the corner. The rail was removed and replaced with a Harrison monument in the same position. This corner was originally established as a wood post in 1822.



  
Kenneth E. Hedge, County Surveyor

  
James S. Swift, IN LS 20200054  
February 14, 2018

Center  
Township

Section 27  
T19N, R1W

Section 34  
T19N, R1W

# SECTION CORNER RECORD

## BOONE COUNTY SURVEYOR'S OFFICE

NW 150-200

State Plane grid coordinates NAD83 (2011):

North: 1753477.44 East: 3114206.60 (U.S. survey feet)

Type of monument: Rebar with metal cap stamped 'Boone County Surveyor'

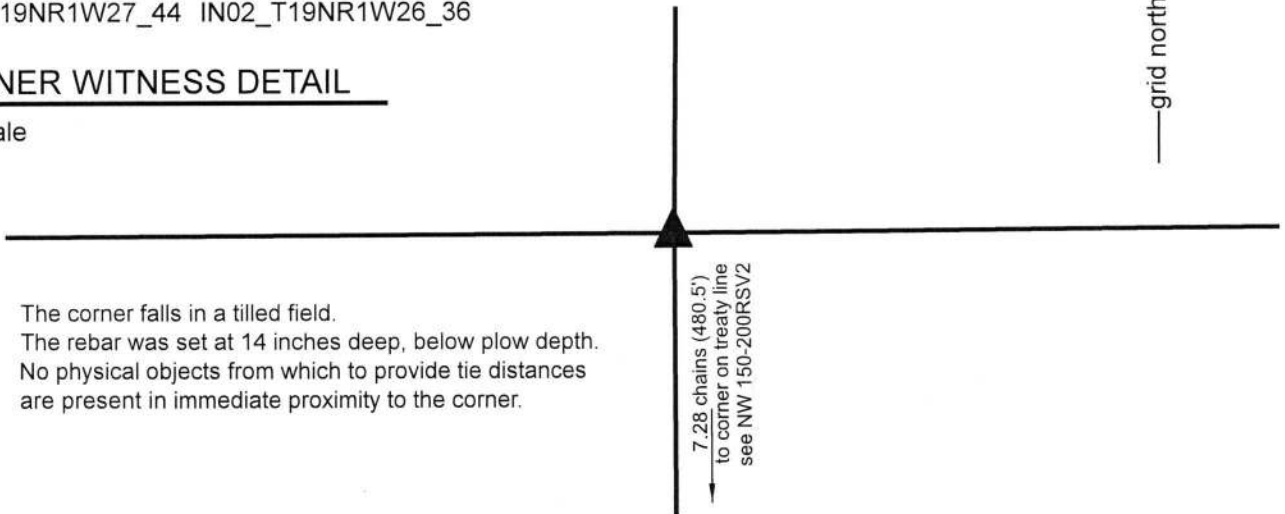
Depth: 14 inches inch below surface of adjacent ground in field

Indiana tie card references:

IN02\_T19NR1W27\_44 IN02\_T19NR1W26\_36

### CORNER WITNESS DETAIL

No scale



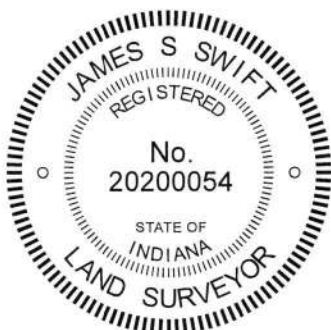
The corner falls in a tilled field.  
 The rebar was set at 14 inches deep, below plow depth.  
 No physical objects from which to provide tie distances are present in immediate proximity to the corner.

The rebar was set at a calculated position, at 7.28 chains north of a wood post found at the intersection of the south line of the Thorntown Reserve and the north south line between sections 26 and 27 (see BCS Corner NW 150-200-RSV2), on the prolongation of a line from the southeast corner of section 26 (see BCS Corner NW 100-200) through the center of said wood post.

This corner was originally established as a wood post during the 1829 subdivision of the former Thorntown Reserve, set at 7.28 chains north of the south line of the reserve. The corner is not specifically described in the Boone County Surveyor's Record beyond the original establishment as a wood post, though it is referenced as the terminal point of measurements in entries of 1833, 1871, 1882, and 1892 and can be directly correlated to an 1875 entry, via information in the 1871 entry.

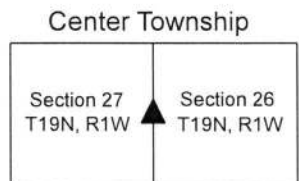
Manual excavation and probing were performed at this corner on November 17, 2017. Prior to excavation, the position had been computed as noted above. It is observed that this position falls approximately 1 foot south of the prolongation of a line beginning 37 links south of a rail purportedly marking the center of section 27, but which is actually believed to be 37 links north of that corner (see BCS Corner NW 150-250 and BCS records of 1882 and 1892), through a wood corner post found 725 feet west of the subject corner. It is also observed that the computed position falls between 2 and 3.5 feet north of the prolongation of various lines determined by evidence found of corners shown in BCS records of 1871 and 1875 in section 26, said evidence including the center quarter corner of section 26 (see BCS Corner NW 150-150) and 2 corner posts and a stone found along an 1150 foot section of fence between said center of section 26 and the subject corner. Hence, it is noted that the computed position falls slightly south of the easterly prolongation of a line determined by evidence correlating to BCS records in section 27 and slightly north of the westerly prolongation of lines determined evidence correlating to BCS records in section 26. The corner also falls in-line with an ancient tree line bearing south from the corner approximately one-half mile north (see BCS Corner 200-200). It is further observed that evidence of the corner quarter-quarter corner approximately one-quarter mile north, in the form of the intersection of three fields (no post or monument found), falls at the midpoint between the subject corner and said BCS Corner NW 200-200.

No further evidence of the corner was found by manual excavation and probing. The corner falls amidst a tilled field and no physical evidence was found in the immediate vicinity of the corner. The computed position was held and a 30 inch length of 5/8 inch rebar bearing a metal cap stamped 'Boone County Surveyor' was buried at 14 inches deep, below the plow depth of the field to mark the corner. Uncertainties of up to 3 feet in all directions may be associated with the computed position for the corner, based on the various evidence found correlating to the BCS entries of 1871, 1875, 1882 and 1892.



*Kenneth E. Hedge*  
 Kenneth E. Hedge, County Surveyor

*James S. Swift*  
 James S. Swift, IN LS 20200054  
 February 27, 2019



# SECTION CORNER RECORD

## BOONE COUNTY SURVEYOR'S OFFICE

NW 150-200RSV2  
 Angle Point on the  
 Thorntown Reserve Line

State Plane grid coordinates NAD83 (2011):

Corner: North: 1752996.97 East: 3114209.78 (U.S. survey feet)

Witness: North: 1752996.80 East: 3114208.80 (U.S. survey feet)

Corner: 9 inch x 9 inch wood post

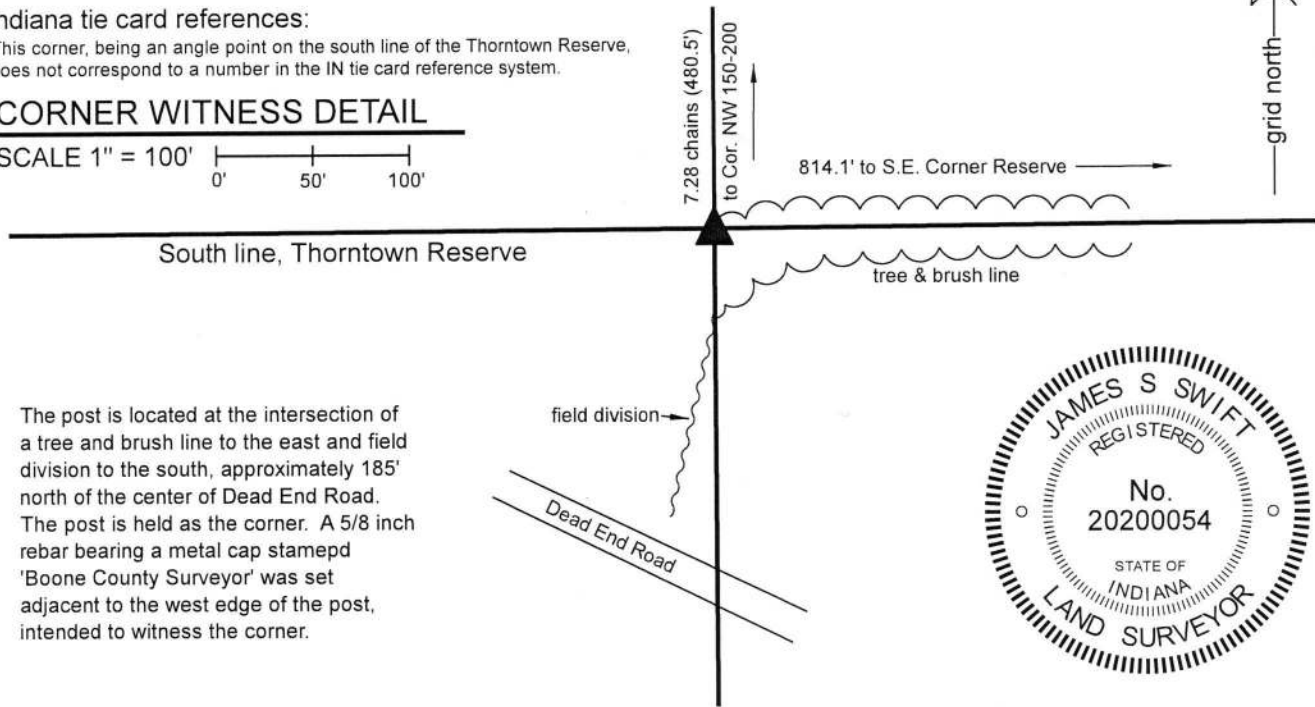
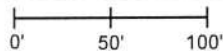
Witness: 5/8" rebar with metal cap stamped 'Boone County Surveyor'

Indiana tie card references:

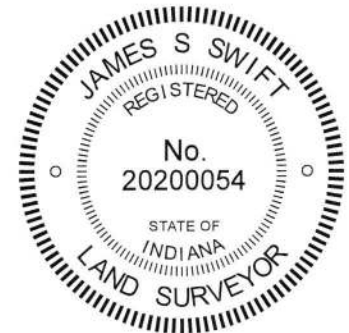
This corner, being an angle point on the south line of the Thorntown Reserve, does not correspond to a number in the IN tie card reference system.

### CORNER WITNESS DETAIL

SCALE 1" = 100'



The post is located at the intersection of a tree and brush line to the east and field division to the south, approximately 185' north of the center of Dead End Road. The post is held as the corner. A 5/8 inch rebar bearing a metal cap stamped 'Boone County Surveyor' was set adjacent to the west edge of the post, intended to witness the corner.



This corner represents an angle point on the south line of the Thorntown Reserve, a 10 square mile area reserved out of the Treaty of St. Mary's, 1818. The corner was originally established as part of the 1822 survey of the perimeter of the reserve, which was performed in conjunction with the subdivision of those parts of Townships 19 and 20 North, Ranges 1 and 2 West which lie outside the reserve. The original notes of 1822 show the corner as being 12.36 chains west of the southeast corner of the reserve and 32.72 chains north of the southwest corner of section 26. The notes from the 1829 subdivision of the interior of the reserve show the corner as being 7.28 chains south of the west quarter corner of section 26.

A BCS record of July 7, 1871 includes a reference to the corner, "Drove stake at Reserve corner from trees." A BCS record of March 18, 1875 shows the corner but includes no description. A BCS record of June 19, 1882 states, with respect to the corner, "Reest'd from Lynn stump yet there, dug up old stake. Set Rock 14x10x9 +. Wit Rock 8x6x6 North, 30 [links] NW."

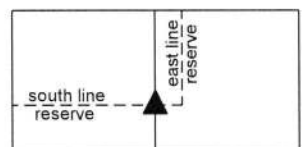
This corner was investigated in detail in conjunction with the determination of the southeast corner of the reserve (adjoining corner to the east) and the west quarter corner of section 26 (adjoining corner to the north) in November, 2017. An ancient wood post at the intersection of a tree line to the east and field division to the south was found providing evidence of the corner. Excavation around the post in November, 2017 revealed no further evidence of the corner. The stones described in the 1882 record were not found. Detailed analysis of the relative positions of evidence found which correlates to the BCS records of 1871, 1875 and 1882 was performed (see discussion for BCS corners NW 150-200 and NW 150-200-RSV1). This analysis yielded the conclusion that the wood post was at or very near the position of the corner as originally established in 1822. The distance between the post and the S.W. corner of section 26 (see BCS Corner NW-100-200) is approximately 3.2 feet longer than shown on the 1822 notes. The west quarter corner of section 26 was established at record distance of 7.28 chains north of this post, as discussed on the document sheet for that corner. No proportional scaling was applied as the record distance works with accessory evidence for said quarter corner and the distances to the north and south of the subject corner are the result of measurements performed at different times (1822 to the south and 1829 to the north).

Given no further evidence found in the vicinity of the post, the post was held as marking the corner. It is noted that the post is called as a corner in the description for the land adjoining the corner on the northeast, northwest and west (Instrument 0000356, Boone County Recorder).

A 30 inch length of 5/8 inch rebar was set adjacent to the west side of the post in February, 2019. The center of the base of the post is held as the corner and the rebar is intended as a witness to the corner.

Center Township

Section 27 Section 26  
 T19N, R1W T19N, R1W



*Kenneth E. Hedge*  
 Kenneth E. Hedge, County Surveyor

*James S. Swift*  
 James S. Swift, IN LS 20200054

February 27, 2019

# SECTION CORNER RECORD

NW 200-200

## BOONE COUNTY SURVEYOR'S OFFICE

State Plane grid coordinates NAD83 (2011):

North: 1756124.54 East: 3114220.42 (U.S. survey feet)

Type of monument: Harrison, 4" disk 'Section Corner'

Depth: Two inches above adjacent ground

Indiana tie card references:

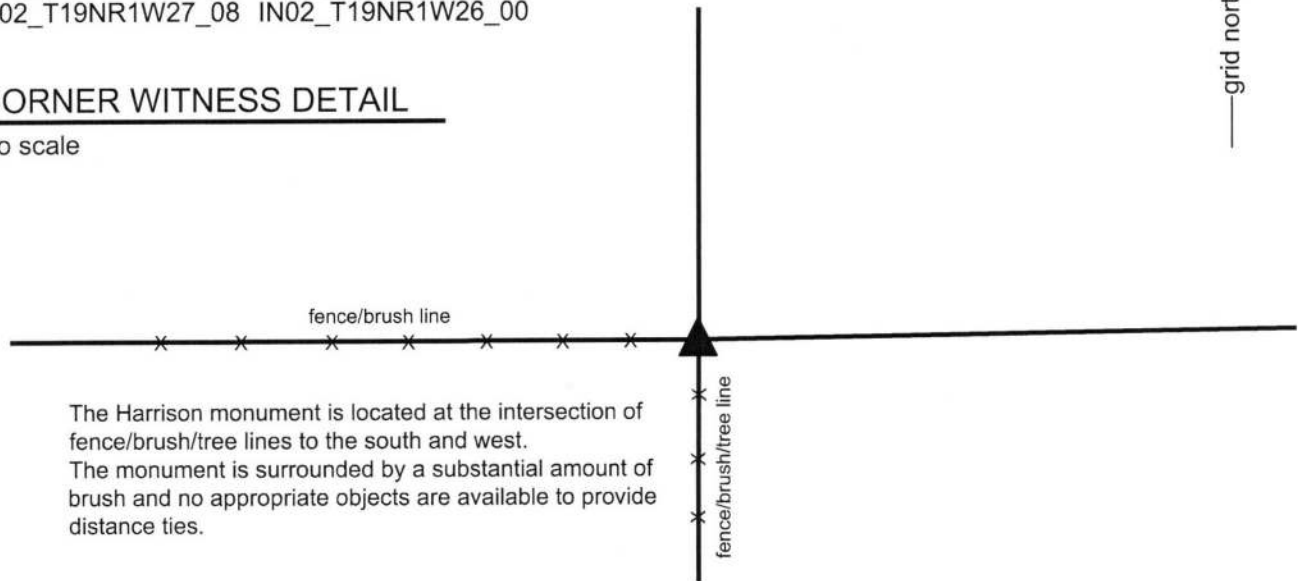
IN02\_T19NR1W22\_80 IN02\_T19NR1W23\_72

IN02\_T19NR1W27\_08 IN02\_T19NR1W26\_00



### CORNER WITNESS DETAIL

No scale



The Harrison monument is located at the intersection of fence/brush/tree lines to the south and west. The monument is surrounded by a substantial amount of brush and no appropriate objects are available to provide distance ties.

The Harrison monument was set over a stone found.

A BCS record dated June 19-20, 1882 states, with respect to this corner, "Section Corner to 26, 27, 22, 23 reestablished from O.B.Trees, stumps yet there, and set rock 16x16x14."

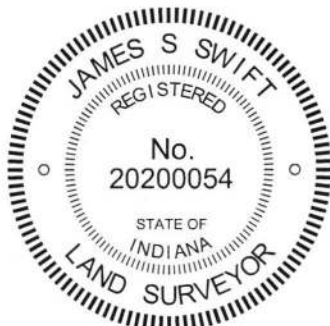
No recent BCS tie cards were found referencing this corner.

This corner was excavated and monumented on October 20, 2017. Prior to excavation a 5/8 inch rebar was found in the immediate vicinity of the corner. The rebar appeared to be substantially disturbed, leaning towards the north. No corner post was observed, but the position of the rebar fit well with the prolongation of standing fences to the south and west, as previously located. Excavation revealed a large stone found immediately east of the rebar. Most of the stone was exposed and the stone was determined to be 16 inches E-W by 8 inches N-S by 16 inches tall. The full height was measured on the south side. The stone had a distinct E-W ridge across the top with a discernable high point in the approximate center of the ridge.

The stone fit the characteristics of a corner stone, standing upright, oriented in cardinal directions and with an evident high point and it appeared in the field to have been purposely set to mark the corner. No specific markings were found on the stone, nor were any noted in the record. The dimensions of the stone matched two of the dimensions from the 1882 record, being 16 inches E-W by 16 inches tall. It is not known why the third dimension did not match the record. It is noted that in the discovery of other stones marking corners throughout the county, other instances have been noted wherein the found stone matched two of the three dimensions reported. No explanation is offered for this other than perhaps a scrivener's error in creating the record. All other characteristics of the stone indicated that it was intended to mark the corner and it was accepted as the best evidence of the original position of the corner. The rebar had been situated against the west end of the stone.

The stone was left in place. Most of the stone was encased in concrete and a Harrison monument was set directly above the high point of the E-W ridge across the top of the stone.

This corner was originally established as a wood post in 1829.



*Kenneth E. Hedge*  
 \_\_\_\_\_  
 Kenneth E. Hedge, County Surveyor

*James S. Swift*  
 \_\_\_\_\_  
 James S. Swift, IN LS 20200054  
 November 7, 2017

Center Township

Section 22 T19N, R1W	Section 23 T19N, R1W
Section 27 T19N, R1W	Section 26 T19N, R1W

# SECTION CORNER RECORD

NW 200-250

## BOONE COUNTY SURVEYOR'S OFFICE

State Plane grid coordinates NAD83 (2011):

North: 1756121.90 East: 3111555.20 (U.S. survey feet)

Type of monument: Harrison, 4" disk 'Section Corner'

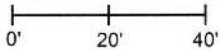
Depth: six inches below adjacent gravel road surface

Indiana tie card references:

IN02\_T19NR1W22\_76 IN02\_T19NR1W27\_04

### CORNER WITNESS DETAIL

SCALE 1" = 40'

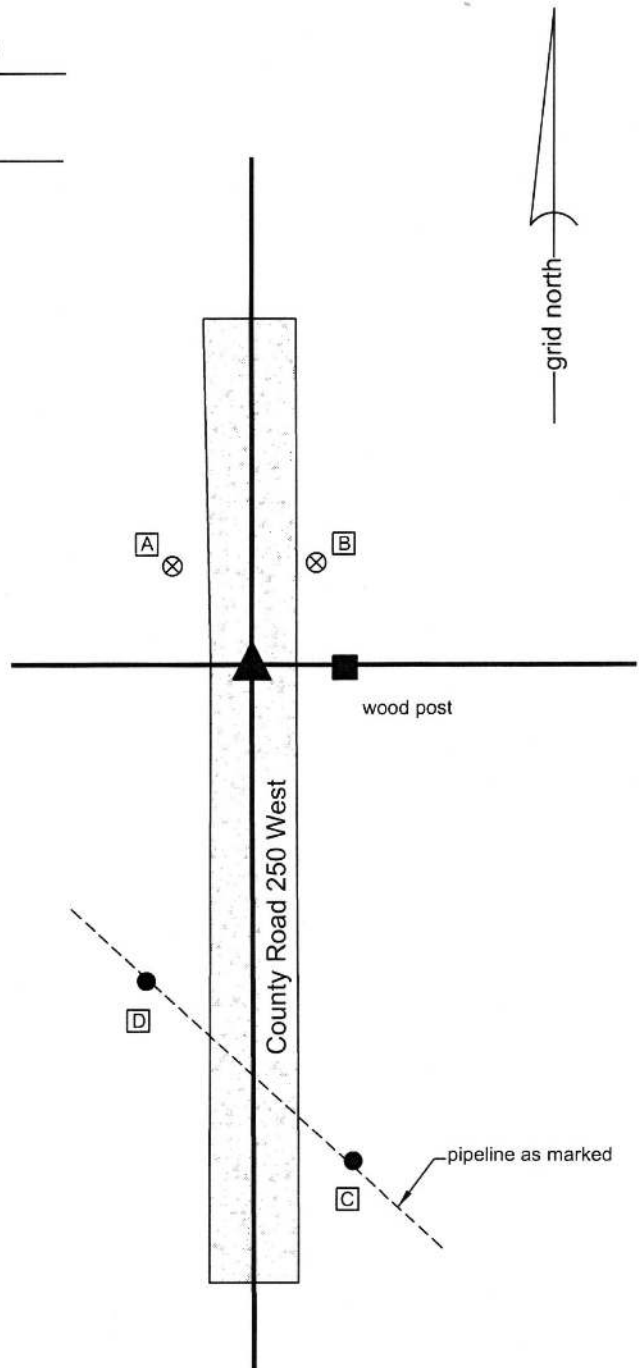


- A - Boone County witness mark, flush, 26.2'
- B - Boone County witness mark, flush, 25.0'
- C - S.W. edge, round steel post, pipeline marker, 104.4'
- D - S.E. edge, round steel post, pipeline marker, 69.6'

The Harrison monument was set in place of a stone found. A BCS record dated April 26-28, 1858 states, with respect to this corner, "Reestab by measurement. Set Rock 4x16." A BCS tie card with dates of both May 27, 1967 and May 3, 1974 shows the corner but makes no mention of a monument found or set. This corner was excavated on July 1, 2015. Prior to excavation, a 5/8 inch diameter rebar was found at the surface, bent at the top but not otherwise disturbed below. Excavation revealed a stone found near the surface of the road. The top of the stone was flat and horizontal, measuring approximately 6 inches N-S by 6 inches E-W. The rock was removed from the road bed and the full stone was measured to be 16 inches tall by 8 inches N-S by 12 inches E-W. The bottom of the road bed was found at 6 inches deep. As the stone had been originally found near the surface, it was concluded that the bottom 10 inches of the stone had been embedded in the clay layer below the road bed while the top 6 inches had been protruding into the road bed.

The height of the stone matches the 1858 record, but the other two dimension do not. The 1858 record is represented in two different volumes of the Boone County Surveyor's Record, the most recent of which was created in 1911. The original record from 1858 is not known to exist. Hence, it is not possible to confirm the dimensions of the stone as originally recorded. However, the characteristics of the stone, being vertical and embedded in the clay, match the characteristics of other stones found marking corners throughout the county. The position of the stone fits well with local evidence in the form of the existing north-south roadway and the fence post and field division to the east. The stone was held as marking the corner. A Harrison monument was set in the position of the center of the flat top of the rock, as originally found. The rebar, removed during excavation had been near the northwest edge of stone, specifically 0.4 foot west and 0.9 foot north of the final position marked by the Harrison monument.

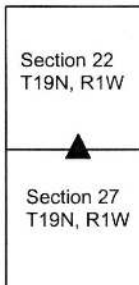
This corner was originally established as a wood post in 1829.



*Kenneth E. Hedge*  
 Kenneth E. Hedge, County Surveyor

*James S. Swift*  
 James S. Swift, IN LS 20200054  
 March 24, 2016

Center Township



# SECTION CORNER RECORD

NW 200-300

## BOONE COUNTY SURVEYOR'S OFFICE

State Plane grid coordinates NAD83 (2011):

North: 1756120.19 East: 3108893.60 (U.S. survey feet)

Type of monument: Harrison, 4" disk 'Section Corner'

Depth: Two inches above adjacent ground

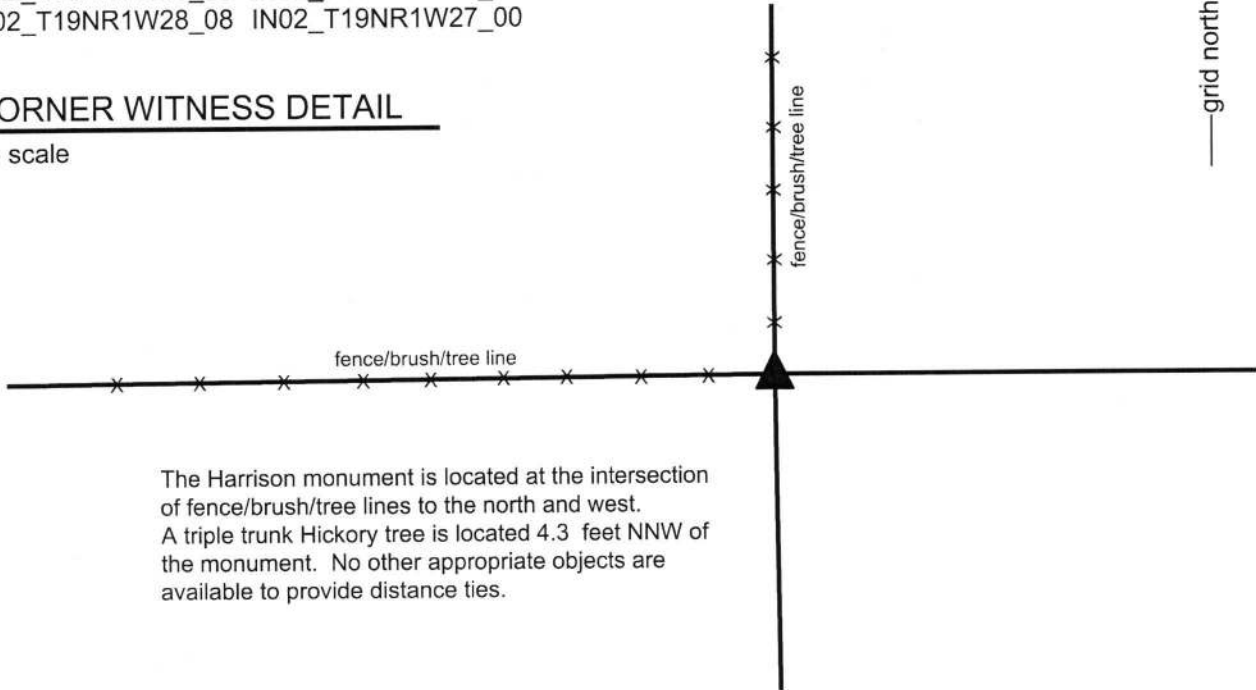
Indiana tie card references:

IN02\_T19NR1W21\_80 IN02\_T19NR1W22\_72

IN02\_T19NR1W28\_08 IN02\_T19NR1W27\_00

### CORNER WITNESS DETAIL

no scale



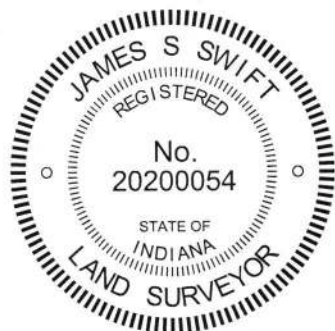
The Harrison monument is located at the intersection of fence/brush/tree lines to the north and west. A triple trunk Hickory tree is located 4.3 feet NNW of the monument. No other appropriate objects are available to provide distance ties.

The Harrison monument was set in place of a wood corner post found.

A BCS record dated May 13-14, 1884 states, with respect to this corner, "Reest'd from O.B.T. Set Flat Rock marked +." No recent BCS tie cards were found referencing this corner.

Excavation was performed at this corner on October 21, 2017. Prior to excavation, an ancient wood corner post was found with standing fences to the north and west and fencing cut-off toward the east. The position of the post fit well with the relative positions of proximate corners. Excavation around and in the vicinity of the post revealed several rocks found, none of which were particularly flat or had a discernable etched "+" mark. Hence, no rocks matching the 1884 record were found, nor were any rocks found which appeared to have been set as marking the corner. The post itself was accepted as providing the best available evidence of the original location of the corner. As found, the top of the post was not attached to the ground and was standing, albeit leaning substantially to the northwest, as supported by the attached fencing and brace posts. Excavation around the base of the post revealed that the old base must have rotted away as only small fragments of wood were found in the dirt below the post. The top of the post was pushed toward the northwest, but in so doing, the northerly brace was displaced and the post was left in an awkward position, suspended and leaning over the corner. The wire to the north was cut and the post was laid on the ground, adjacent to and northwest of its former position. A Harrison monument was set in the position of the bottom of the post, as originally found.

This corner was originally established as a wood post in 1829.



  
 Kenneth E. Hedge, County Surveyor

  
 James S. Swift, IN LS 20200054  
 November 7, 2017

Center Township

Section 21 T19N, R1W	Section 22 T19N, R1W
Section 28 T19N, R1W	Section 27 T19N, R1W

The table shows a 2x2 grid of sections. A triangle points to the intersection of Section 21 and Section 28.