

SECTION CORNER RECORD

BOONE COUNTY SURVEYOR'S OFFICE

SW 400-800

State Plane grid coordinates NAD83 (2011):
 North: 1724169.54 East: 3082642.75 (U.S. survey feet)

Type of monument: INDOT Type B monument
 Depth: flush with adjacent road surface

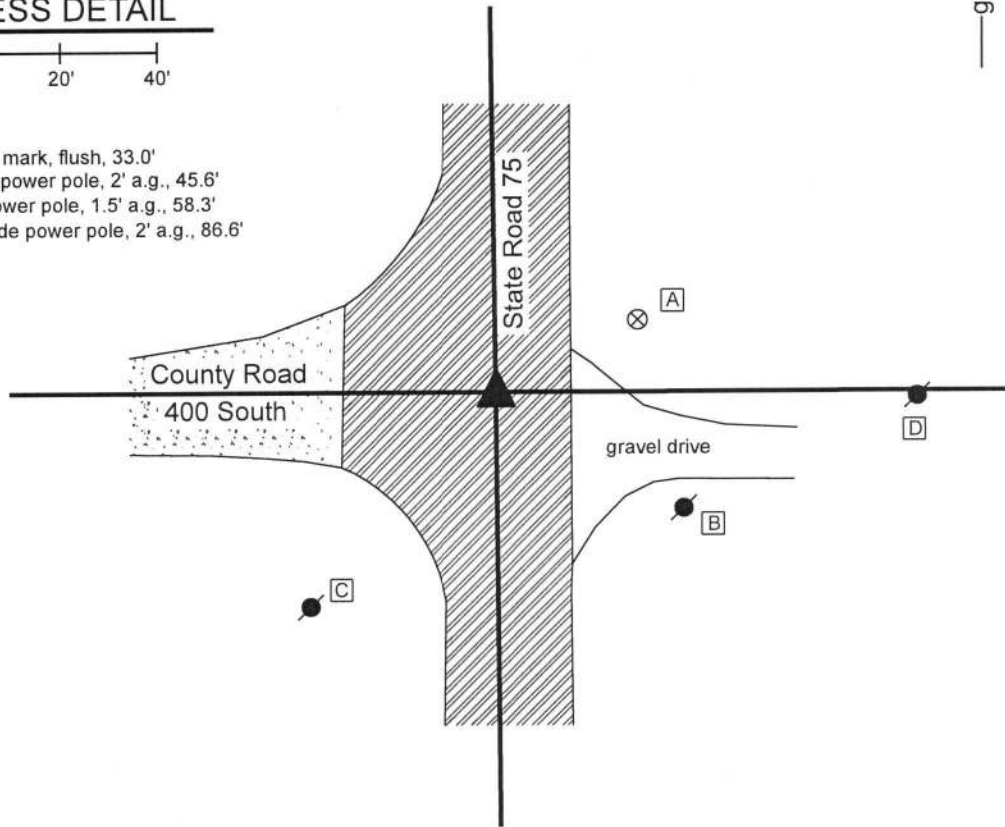
Indiana tie card references:
 IN02_T18NR2W22_80 IN02_T18NR2W23_72
 IN02_T18NR2W27_08 IN02_T18NR2W26_00



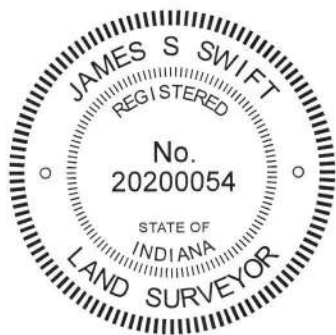
CORNER WITNESS DETAIL

SCALE 1" = 40'

- A - Boone County witness mark, flush, 33.0'
- B - Mag nail set in N. side power pole, 2' a.g., 45.6'
- C - Nail fnd in N.E. side power pole, 1.5' a.g., 58.3'
- D - Mag nail set in S.W. side power pole, 2' a.g., 86.6'



The INDOT Type B monument was found in place.
 A BCS tie card dated December, 2003 shows the corner to be a PK nail found in patch. In 2004 or later, INDOT replaced the nail with a Type B monument in the same position. Though the origin of the position of the monument is not known, it fits with local evidence in the form of the intersection of the existing roadways. This corner was not excavated, being in a state highway. The Type B monument is held as marking the corner.
 This corner was originally established as a wood post in 1820.



Kenneth E. Hedge
 Kenneth E. Hedge, County Surveyor

James S. Swift
 James S. Swift, IN LS 20200054
 March 13, 2019

Jackson Township

Section 22 T18N, R2W	Section 23 T18N, R2W
Section 27 T18N, R2W	Section 26 T18N, R2W

SECTION CORNER RECORD

SW 400-900

BOONE COUNTY SURVEYOR'S OFFICE

State Plane grid coordinates NAD83 (2011):

North: 1724165.86 East: 3077331.35 (U.S. survey feet)

Type of monument: Harrison, 4" disk 'Section Corner'

Depth: Six inches below adjacent gravel road surface

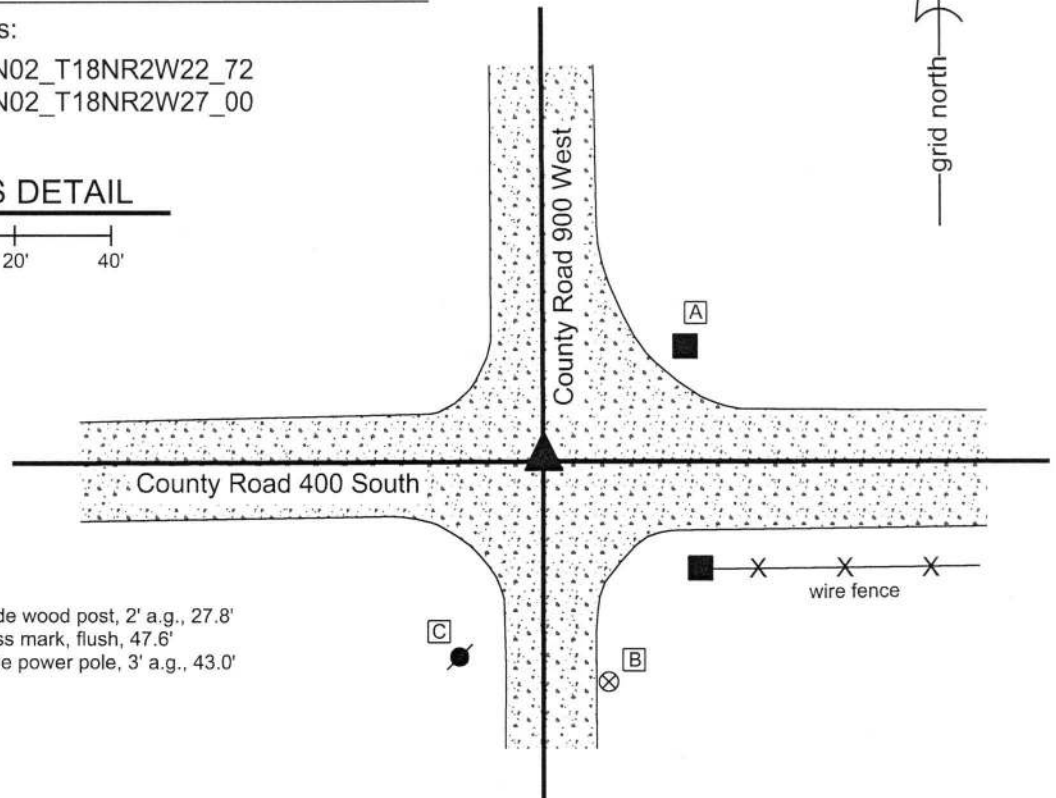
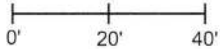
Indiana tie card references:

IN02_T18NR2W21_80 IN02_T18NR2W22_72

IN02_T18NR2W28_08 IN02_T18NR2W27_00

CORNER WITNESS DETAIL

SCALE 1" = 40'

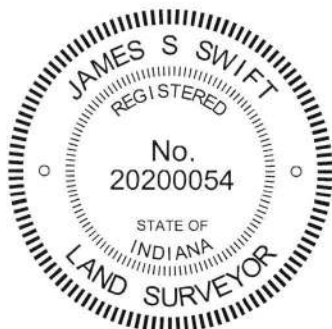


- A - Mag nail set in W. side wood post, 2' a.g., 27.8'
- B - Boone County witness mark, flush, 47.6'
- C - Mag nail set in E. side power pole, 3' a.g., 43.0'

The Harrison monument was set over a stone found. A BCS record of April 20-22, 1870 calls this corner "Rock that was set." A BCS tie card with no date, though evidently originating from the late 1960s or early 1970s, based on the drafting style of the sketch and the names of the crew members, shows this corner as "Stone Located. RRR 7" east of stone."

This corner was excavated on September 28, 2018. Prior to excavation, a section of 5/8 inch rebar was found flush with the road surface. The rebar was bent at 4 inches below the surface of the road, above which point it was generally horizontal and below which point it was generally vertical. Excavation revealed a railroad rail found at 5 inches deep in the same approximate horizontal position as the shaft of the rebar. Further excavation revealed a stone found at 32 inches deep. The stone had a distinct "+" mark at the top, center. With the top 4 inches of the stone exposed, it measured 9 inches N-S by 8 inches E-W. The stone was fully embedded in the clay layer below the road, with the top of the stone coincident with the bottom of the road bed. The "+" mark on the stone was 7 inches west of the railroad rail, in precise conformity with the undated tie card. The tie card clearly indicates that the found stone is held as the corner and that the rail was set 7 inches east, presumably as a witness. It is noted that the section of rail, removed during excavation, was 30 inches long. The vertical separation between the top of the stone and the top of the rail was computed to be 27 inches. It is concluded that the top of the rail was most likely originally set flush with the road bed and that, given that the rail was too long to be placed directly over the stone, the rail was set slightly east of the stone as a witness to the stone. The "+" mark on the top of the stone was held as marking the specific location of the corner and a Harrison monument was set directly over this point. As noted, the rebar and rail, both removed during excavation, had been 7 inches east of the mark on the stone.

This corner was originally established as a wood post in 1820.



Kenneth E. Hedge
Kenneth E. Hedge, County Surveyor

James S. Swift
James S. Swift, IN LS 20200054
October 10, 2018

Jackson Township

Section 21 T18N, R2W	Section 22 T18N, R2W
Section 28 T18N, R2W	Section 27 T18N, R2W

SECTION CORNER RECORD

BOONE COUNTY SURVEYOR'S OFFICE

SW 450-800

State Plane grid coordinates NAD83 (2011):
 North: 1721530.63 East: 3082666.00 (U.S. survey feet)

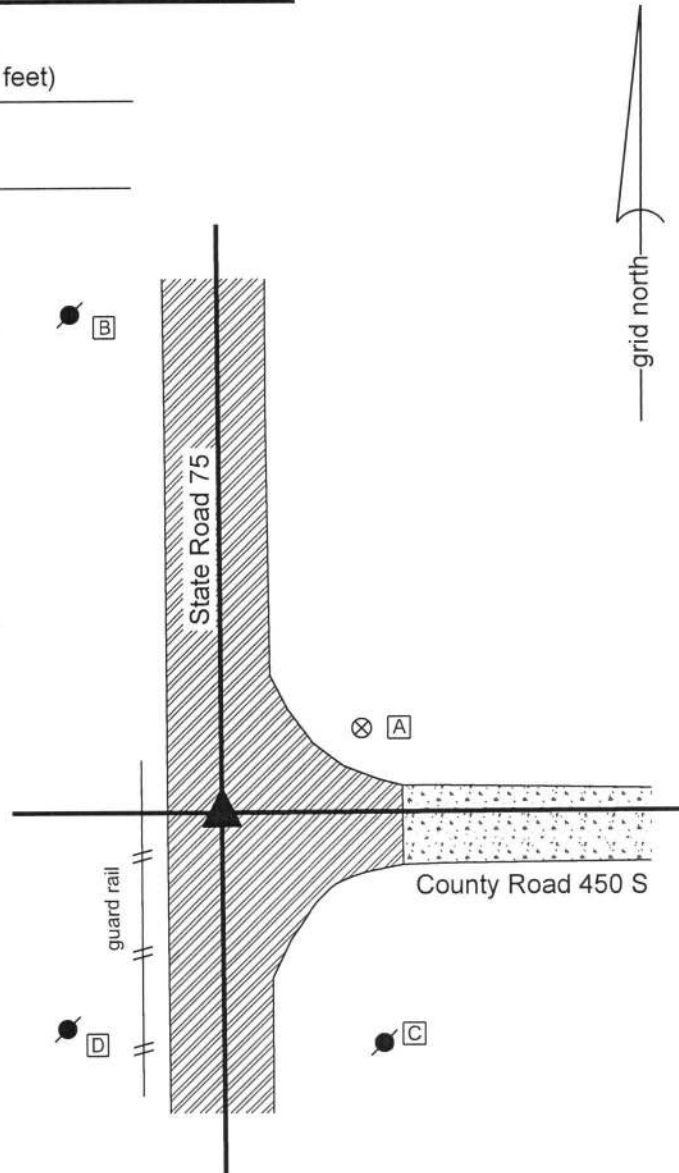
Type of monument: INDOT Type B Monument
 Depth: Flush with adjacent road surface

Indiana tie card references:
 IN02_T18NR2W27_44 IN02_T18NR2W26_36

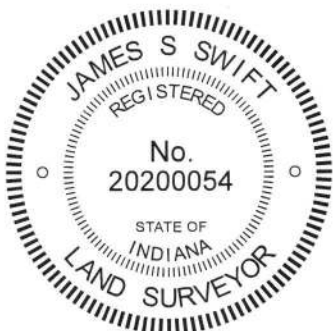
CORNER WITNESS DETAIL

SCALE 1" = 50'

- A - Boone County witness mark, flush, 42.3'
- B - Mag nail set in E. side power pole, 2' a.g., 135.3'
- C - Mag nail set in N. side power pole, 2' a.g., 72.9'
- D - Mag nail set in E. side power pole, 2' a.g., 68.7'



The INDOT Type B monument was found in place. A BCS tie card dated December, 2003 shows the corner to be a PK nail found. In 2004 or later, INDOT replaced the nail with a Type B monument in the same position. Though the origin of the position of the monument is not known, it fits with local evidence in the form of the intersection of the existing roadways. This corner was not excavated, being in a state highway. The Type B monument is held as marking the corner. This corner was originally established as a wood post in 1820.



Kenneth E. Hedge
 Kenneth E. Hedge, County Surveyor

James S. Swift
 James S. Swift, IN LS 20200054
 March 13, 2019

Jackson Township

