

# SECTION CORNER RECORD

SE 400-900

## BOONE COUNTY SURVEYOR'S OFFICE

State Plane grid coordinates NAD83 (NSRS 2007):

North: 1725616.31 East: 3172723.18 (U.S. survey feet)

Type of monument: Harrison, 4" disk 'Section Corner'

Depth: One inch below adjacent road surface

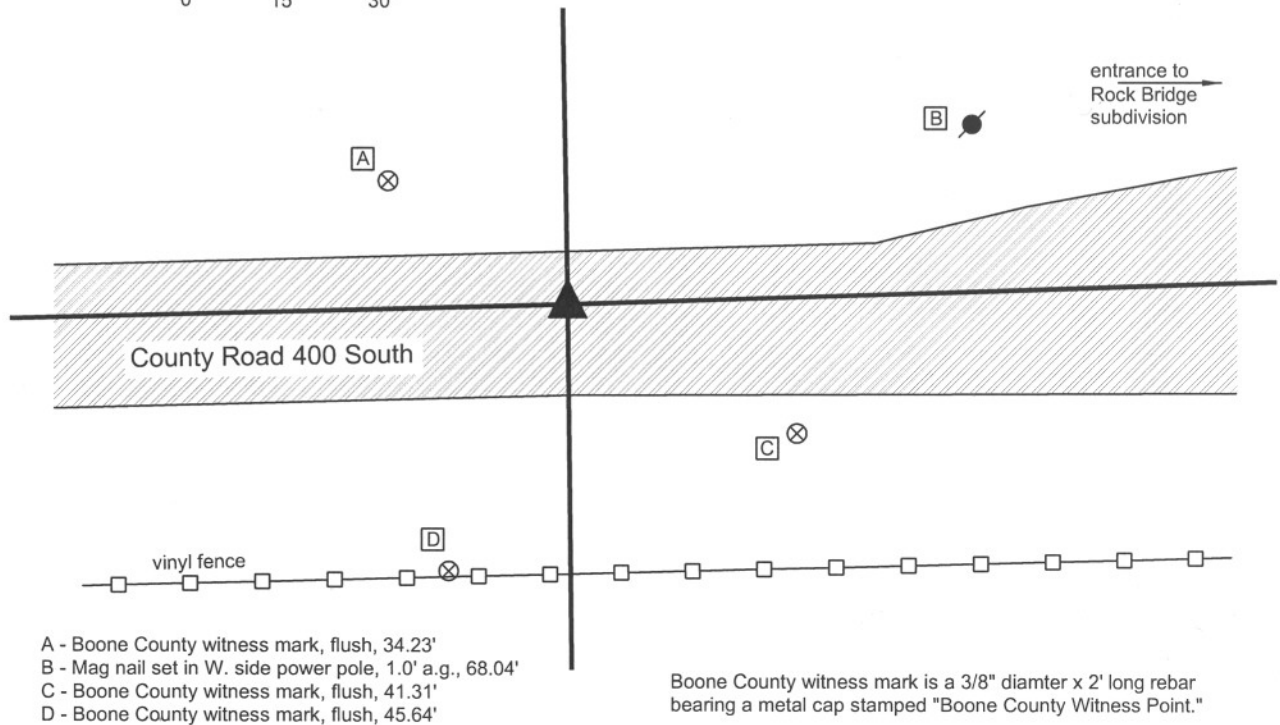
Indiana tie card references:

IN02\_T18NR2E21\_80 IN02\_T18NR2E22\_72

IN02\_T18NR2E28\_08 IN02\_T18NR2E27\_00

### CORNER WITNESS DETAIL

SCALE 1" = 30'



The harrison monument was set in the position of a railroad spike found 3 feet north of the approximate center of County Road 400 South and 6 inches below grade. The railroad spike is demonstrated on several surveys and has been held as the corner for the perimeter surveys of the adjacent subdivisions. No BCS records were found for this corner beyond the original establishment of the corner in July, 1821. An area 4 feet E-W by 7 feet N-S, centered on the railroad spike in the E-W dimension and extended 4 feet south and 3 feet north of the spike was excavated November 29, 2007. Excavation yielded a 5/8 inch rebar and 1/2 inch i.d. iron pipe seperated by approximately 3 inches E-W. The railroad spike was above these monuments and centered between them in the E-W dimension. No other monuments were found. The railroad spike, rebar and pipe were all removed during excavation and the harrison set in the position of the railroad spike. This corner was originally established as a wood post in July 1821.

Eagle Township



*Kenneth E. Hedge*  
 Kenneth E. Hedge, County Surveyor

*James S. Swift*  
 James S. Swift, IN LS 20200054  
 March 11, 2009

Section 21 T18N, R2E	Section 22 T18N, R2E
Section 28 T18N, R2E	Section 27 T18N, R2E

# SECTION CORNER RECORD

SE 400-950

## BOONE COUNTY SURVEYOR'S OFFICE

State Plane grid coordinates NAD83 (NSRS 2007):

North: 1725702.56 East: 3175415.67 (U.S. survey feet)

Type of monument: Harrison, 4" disk 'Section Corner'

Depth: 2 inches below surface of gravel drive.

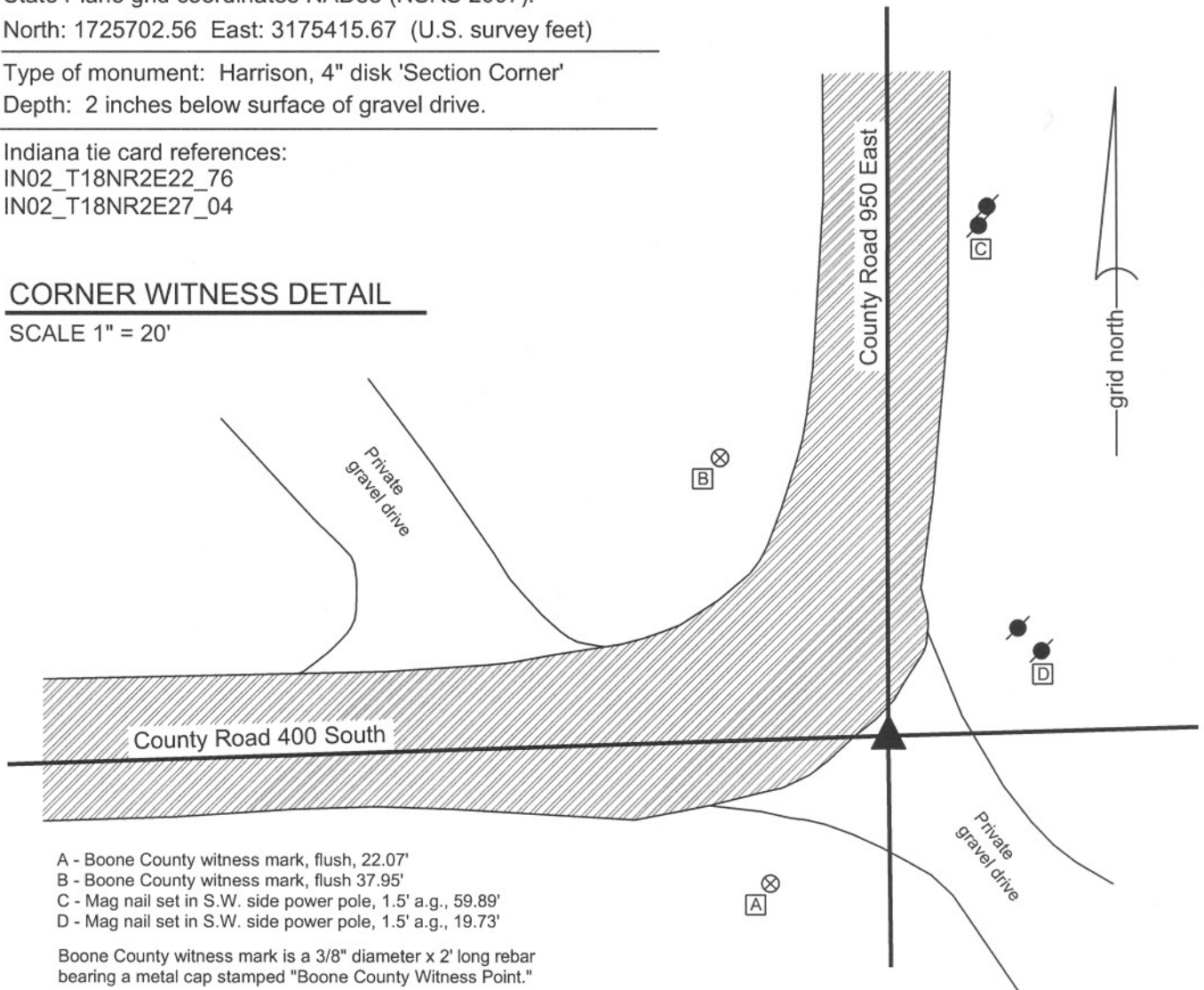
Indiana tie card references:

IN02\_T18NR2E22\_76

IN02\_T18NR2E27\_04

### CORNER WITNESS DETAIL

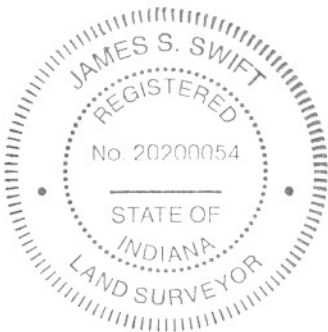
SCALE 1" = 20'



- A - Boone County witness mark, flush, 22.07'
- B - Boone County witness mark, flush 37.95'
- C - Mag nail set in S.W. side power pole, 1.5' a.g., 59.89'
- D - Mag nail set in S.W. side power pole, 1.5' a.g., 19.73'

Boone County witness mark is a 3/8" diameter x 2' long rebar bearing a metal cap stamped "Boone County Witness Point."

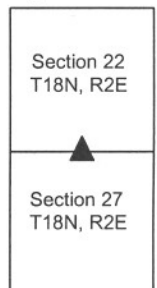
The Harrison monument was set over the etched "+" on a stone found and accepted as marking the corner. The stone matches the description in a previous BCS record, dated July 22 and August 7, 1890: "Re-established at intersection of lines from North and East. Rock + 22.12.8 at corner." The top of the stone is 10 inches below the surface of the gravel drive. The etched "+" is clearly visible on the top of the stone. The stone is not regular in shape, but the 12 x 8 dimension can be discerned. The stone was not excavated to the full 22 inch depth. A BCS tie card, dated 5/23/1991, calls for a "5/8 inch rebar, 4 inches deep" as being the corner. This rebar was found and is known to have been held for numerous private surveys. During excavation, it was discovered that the rebar was situated against the north side of the stone, with the top of the rebar being 0.23' N and 0.1' W of the "+" on the stone. An iron pipe, for which no previous record has been found, was found against the east side of the stone. A short section of 18 inch diameter plastic tile was set over the stone, and the Harrison monument, truncated at 10 inches, was set within this piece of tile. This corner was originally established in July, 1821.



*Kenneth E. Hedge*  
Kenneth E. Hedge, County Surveyor

*J. S. Swift*  
James S. Swift, IN LS 20200054  
February 1, 2008

Eagle Township



## PHOTOGRAPHIC DOCUMENTATION

Date of photography: 11/29/2007

View of the stone as exposed.  
The top of the stone is approximately 10 inches below the surface of the gravel driveway.  
The stone matches the record description of "Rock, +, 22.12.8"

The stone was encased in an 18" diameter plastic tile and a Harrison monument was truncated at 10 inches and set directly over the "+" on the top of the stone.



Same picture as above, with the etched "+" enhanced for ease of visual detection.



# SECTION CORNER RECORD

SE 400-1000

## BOONE COUNTY SURVEYOR'S OFFICE

State Plane grid coordinates NAD83 (NSRS 2007):

North: 1725778.50 East: 3178101.90 (U.S. survey feet)

Type of monument: Stone (blue granite)

Depth: top at 2 inches above grade

Indiana tie card references:

IN02\_T18NR2E22\_80

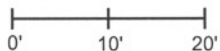
IN02\_T18NR2E23\_72

IN02\_T18NR2E27\_00

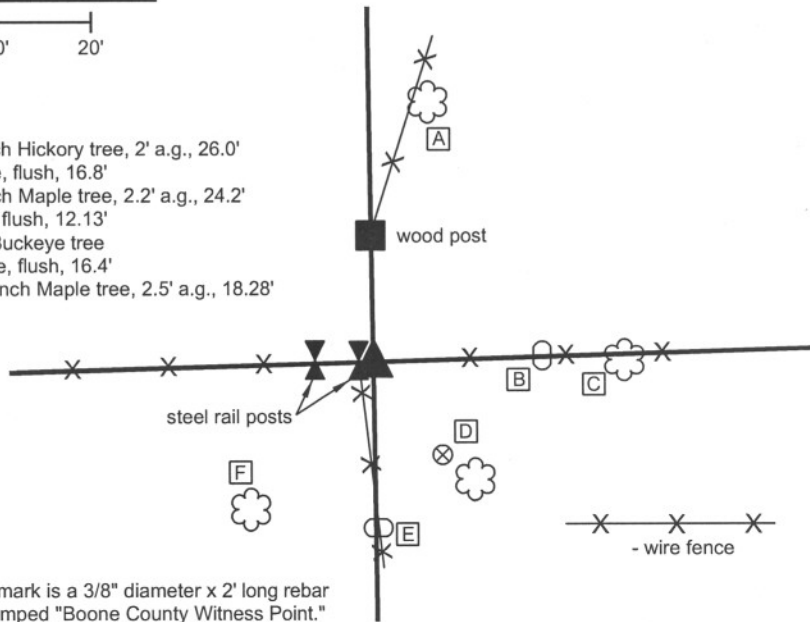
IN02\_T18NR2E26\_08

### CORNER WITNESS DETAIL

SCALE 1" = 20'



- A - Mag nail set in S. side, 13 inch Hickory tree, 2' a.g., 26.0'
- B - Top, west side, witness stone, flush, 16.8'
- C - Mag nail set in W. side, 24inch Maple tree, 2.2' a.g., 24.2'
- D - Boone County witness mark, flush, 12.13'  
point is 1.9' N.W. of 16 inch Buckeye tree
- E - Top, north side, witness stone, flush, 16.4'
- F - Mag nail set in N.E. side, 16 inch Maple tree, 2.5' a.g., 18.28'



Boone County witness mark is a 3/8" diameter x 2' long rebar bearing a metal cap stamped "Boone County Witness Point."

A BCS record of March 14-15, 1894 states "Re-established by intersection of lines. Set Blue rock + 20.9.8 at corner. White flint rock 16.10.6 East 25 links. Blue rock W 18.14.11 South 25 links."

All three rocks were found and the corner stone was found to be situated at approximately the 25 link (16.5 feet) distance from the witness stones (see measured tie distances above.) The + is not visible on the corner stone, though it is clearly a blue granite stone. The stone was left in place and witnessed with a orange fiberglass witness post. This stone is noted as being found on numerous recorded surveys. This corner was originally established as a wood post in July 1821.



*Kenneth E. Hedge*  
Kenneth E. Hedge, County Surveyor

*James S. Swift*  
James S. Swift, IN LS 20200054  
March 11, 2009

Eagle Township

Section 22 T18N, R2E	Section 23 T18N, R2E
Section 27 T18N, R2E	Section 26 T18N, R2E

PHOTOGRAPHIC DOCUMENTATION

Date of photography: April 9, 2008

Corner stone as visible prior to excavation - view from southeast.



Corner stone with some of the stone exposed - overhead view from southeast.



Corner stone - view from above.



Corner stone - side view from north.



Record witness stone to the south.



Record witness stone to the east.



For details and documentation, refer to related sheet "Section Corner Record."

# SECTION CORNER RECORD

# SE 450-900


## BOONE COUNTY SURVEYOR'S OFFICE

State Plane grid coordinates NAD83 (NSRS 2007):  
North: 1722979.46 East: 3172756.84 (U.S. survey feet)

Type of monument: Harrison, 4" disk 'Section Corner'  
Depth: Approximately 1 inch deep, below the grass.

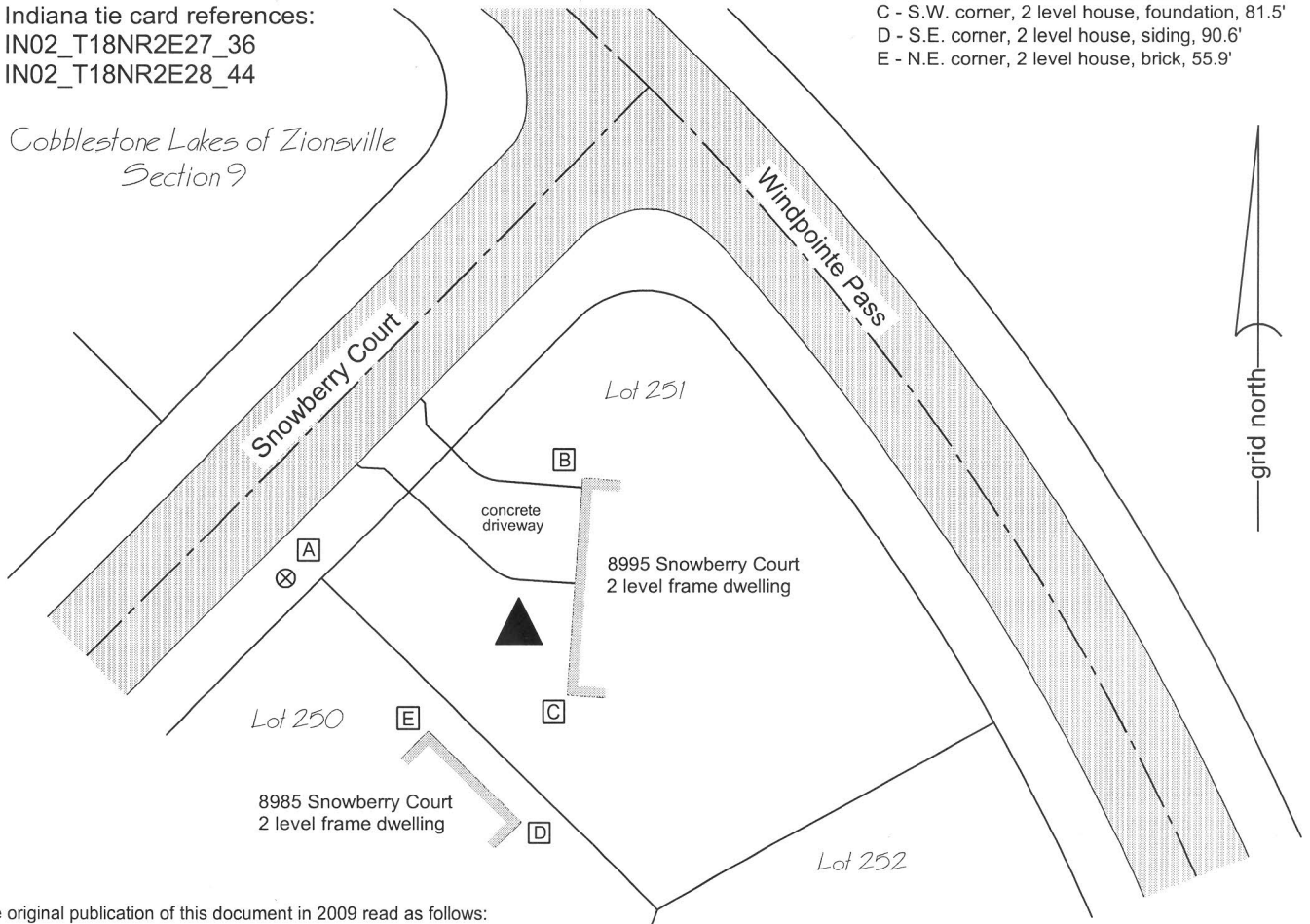
Indiana tie card references:  
IN02\_T18NR2E27\_36  
IN02\_T18NR2E28\_44

### CORNER WITNESS DETAIL

SCALE 1" = 50' 

- A - Boone County Witness Point, flush, 63.6'
- B - N.W. corner, 2 level house, brick, 43.9'
- C - S.W. corner, 2 level house, foundation, 81.5'
- D - S.E. corner, 2 level house, siding, 90.6'
- E - N.E. corner, 2 level house, brick, 55.9'

*Cobblestone Lakes of Zionsville  
Section 9*

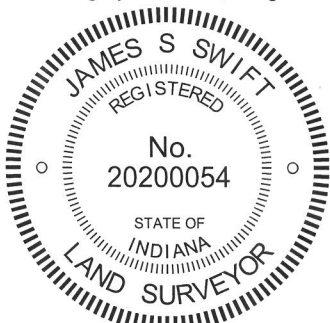


The original publication of this document in 2009 read as follows:

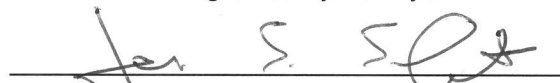
"The harrison monument was set in place of a rebar found.

A BCS record of March 22, 1910 states "Found rock for corner already established." No BCS tie cards were found for this corner. A 5/8 inch rebar has been held as the corner for various private surveys, including the ALTA surveys prepared in advance of the development of Cobblestone Lakes Subdivision (see Survey Book 6, pages 63-64 among others). The rebar was present and undisturbed in the summer of 2007, located at the intersection of mature tree lines to the east and south. The rebar was located at that time but the corner was not excavated. Construction on this section of Cobblestone Lakes began soon thereafter. The tree lines were removed and the top soil was stripped. In October, 2008 the rebar was found bent over but still firmly in the ground and at the previous position. Minor excavation took place in the vicinity of the rebar and no stones were found which appeared to be corner stones. The rebar was removed and the harrison monument was set in the place of the lower section of the rebar which did not appear to have been disturbed during the previous grading work. As of the date of certification, construction has not commenced on any homes in the neighborhood. This corner was originally established as a wood post in July, 1821."

A new home was constructed on this site in 2012-2013. Site work associated with that construction buried, but did not disturb, the harrison monument. The monument was uncovered on April 2, 2013 and confirmed to be in the original location. The monument was left in place and another harrison monument was set above it. At the time this monument was set final grading had not been completed. Subsequent final grading and placement of sod was performed and the harrison monument is situated slightly below flush, being at the depth of the bottom of the sod layer.

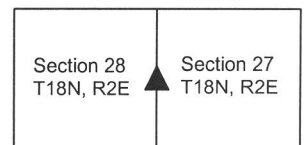


  
Kenneth E. Hedge, County Surveyor

  
James S. Swift, IN LS 20200054

March 11, 2009 Revised February 5, 2015

Eagle Township



# SECTION CORNER RECORD

# SE 450-1000

## BOONE COUNTY SURVEYOR'S OFFICE

State Plane grid coordinates NAD83 (NSRS 2007):

North: 1723136.86 East: 3178137.61 (U.S. survey feet)

Type of monument: Harrison, 4" disk 'Section Corner'

Depth: Flush with adjacent ground

Indiana tie card references:

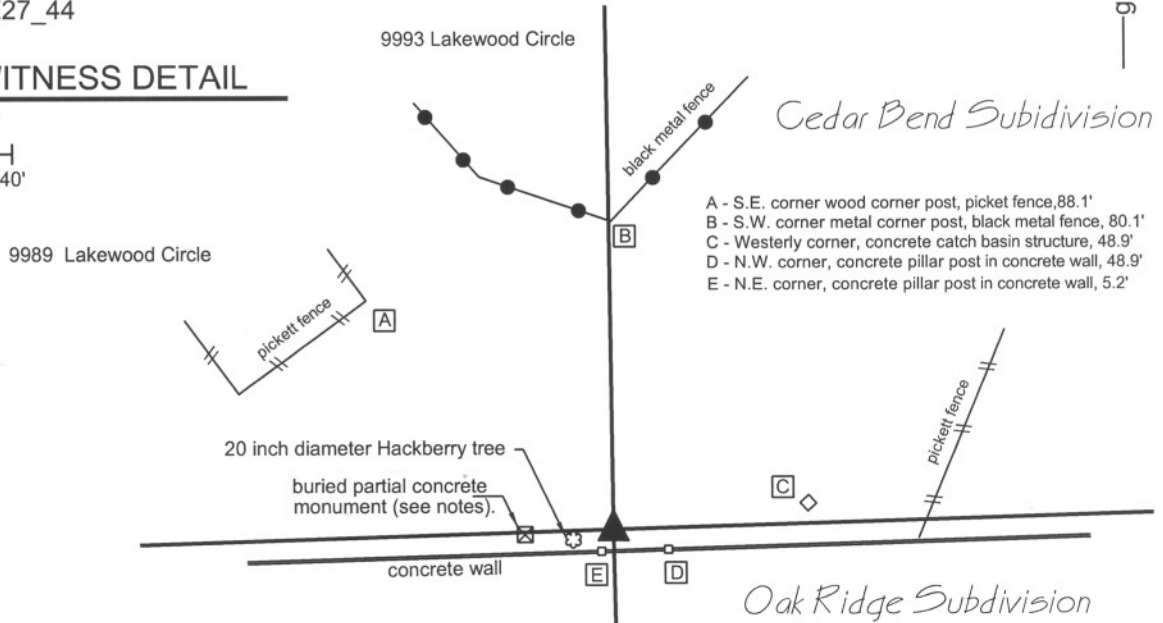
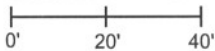
IN02\_T18NR2E26\_36

IN02\_T18NR2E27\_44



### CORNER WITNESS DETAIL

SCALE 1" = 40'



- A - S.E. corner wood corner post, picket fence, 88.1'
- B - S.W. corner metal corner post, black metal fence, 80.1'
- C - Westerly corner, concrete catch basin structure, 48.9'
- D - N.W. corner, concrete pillar post in concrete wall, 48.9'
- E - N.E. corner, concrete pillar post in concrete wall, 5.2'

The Harrison monument was set at the calculated location of a stone which previously monumented this corner.

A BCS record of March 14, 15, 16, 1892 shows numerous corners monumented with stones. With respect to the subject corner of this tie card (corner H, Section 26) the record states "Found from stump of walnut known to witnesses present as original B.T. Set rock + 20.18.14 at corner." In the same record it is demonstrated that a line was measured from this corner to the east quarter of section 26, that the center of section was established and monumented and that two corners between the subject corner and the center of section were also established and monumented, being corners "9" and "15", as shown on the record, which are approximately one-quarter mile east and approximately one-eighth mile east of the subject corner, respectively. A BCS reference sheet shows the record stone at the subject corner as found and witnessed on May 21, 1989.

The land adjacent to this corner on the north was platted in 1978 as Cedar Bend subdivision as recorded in Plat Book 6, page 29-29A, Office of the Boone County Recorder. This plat shows a location of the corner and it is known that a concrete monument was set at the location shown on the plat of Cedar Bend. The aforementioned BCS reference sheet indicates that the record stone was still present in 1989, but the 1978 plat of Cedar Bend makes no mention of this monument. The land adjacent to this corner on the south was platted in 1991 as Oak Ridge Section I as recorded in Plat Book 7, pages 57-59 in said Recorder's Office. This plat holds the position of the concrete monument as the corner, in agreement with the plat of Cedar Bend. It is known that land disturbing activities took place in the immediate vicinity of the corner as part of the development of these subdivisions, particularly Oak Ridge Section I. In 1994 the land south of the corner and east of Oak Ridge Section I was platted as Oak Ridge Estates, as recorded in Plat Book 8, pages 58-62 in said Recorder's Office. The boundary survey which preceded the plat is recorded in Survey Book 1, pages 69-70 in said Recorder's Office, dated August 26, 1994 and recorded November 23, 1994. This survey disputes the position of the concrete monument as the corner and reconstructs the location of the corner with respect to the corner stones and/or their witnesses described in the 1892 record as corners "9", "15", and "O". The concrete monument is shown to be 23.2 feet west of the computed position for the corner. At the time of the survey, the record stone was not found and was believed to be obliterated due to land disturbing activities. The Surveyor's Report on this survey is thorough in its explanation of its findings and the reasoning for why the corner was established where it was. A 5/8 inch rebar was set at the computed position of the corner. The subsequent plat of Oak Ridge Estates holds the 5/8 inch rebar as the corner.

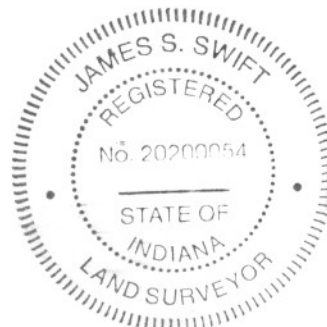
Field reconnaissance for this corner was performed in October 2008 and June 2009. The concrete monument was found, broken-off approximately 8 inches below grade. The rebar was not found. The record stone at corner "15" was found and the record witness 16.5 feet west of corner "9" was found. The record stone at corner "9" was found by probe but is underneath the root of a large cherry tree and the actual stone was not exposed. Several monuments shown on plat of Oak Ridge Estates were also found, including a concrete monument at the northwest corner of the subdivision, a concrete monument at the subdivision corner which is also the southwest corner of lot 150, and rebars bearing the cap of the subdividing survey company (Cripe) at the northwest corner of lot 150 and the southwest corner of lot 111. Using the above described stones and artificial monuments, the position of the rebar was reconstructed to within a positional uncertainty of approximately 0.2 of a foot. The conclusions of the survey recorded in Survey Book 1, pages 69-70 are accepted and a Harrison monument was set at the computed position of the rebar, which had been set at the computed position of the stone described in the 1892 record. The broken-off concrete monument was left in place, 23.2 feet west of the corner. This corner was originally established as a wood post in July, 1821.

  
 Kenneth E. Hedge, County Surveyor



James S. Swift, IN LS 20200054

July 14, 2010



Eagle Township

Section 27 T18N, R2E	Section 26 T18N, R2E
-------------------------	-------------------------

# SECTION CORNER RECORD

SE 500-900

## BOONE COUNTY SURVEYOR'S OFFICE

State Plane grid coordinates NAD83 (NSRS 2007):

North: 1720340.78 East: 3172780.70 (U.S. survey feet)

Type of monument: Harrison, 4" disk 'Section Corner'

Depth: flush with adjoining grade

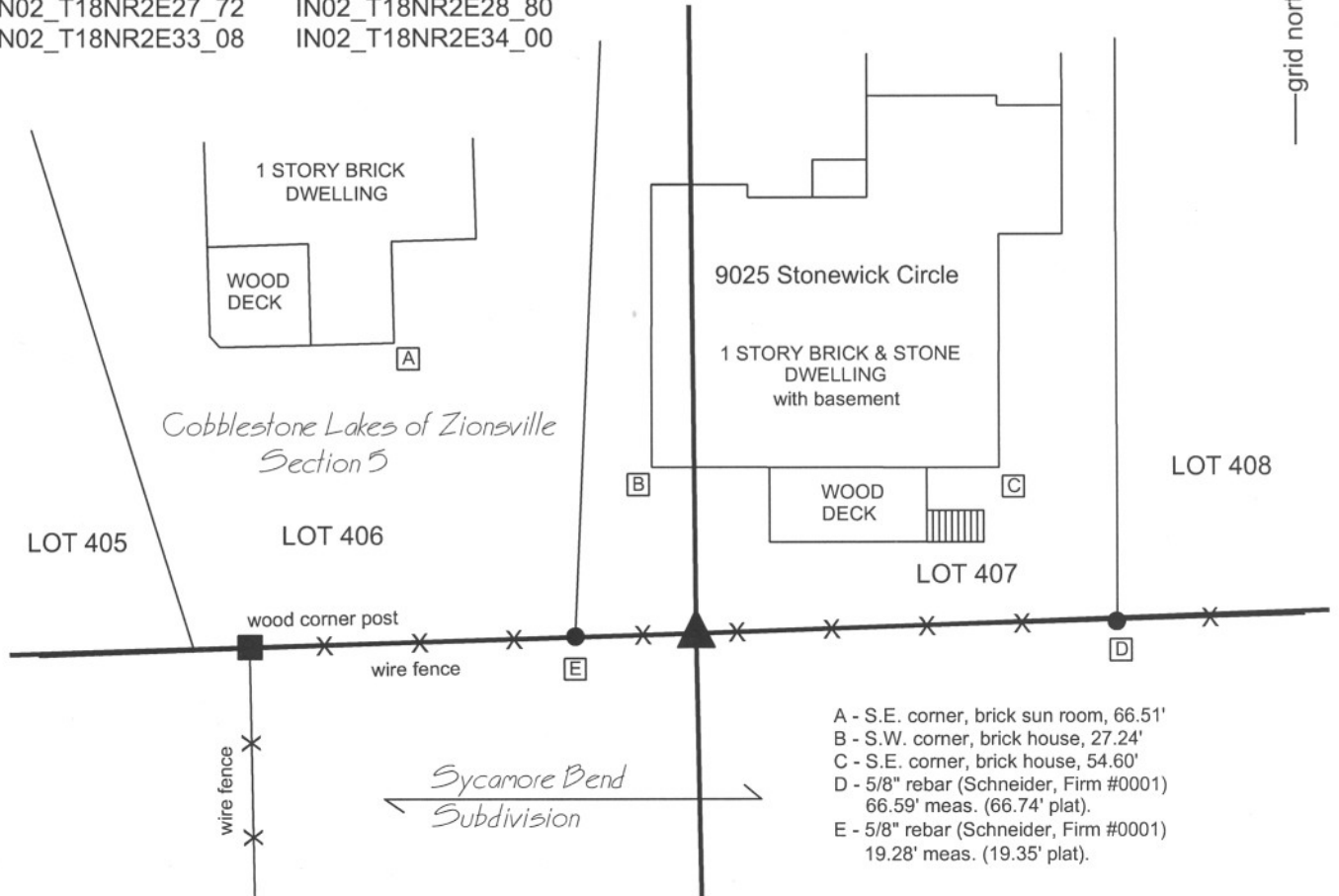
### CORNER WITNESS DETAIL

SCALE 1" = 30' 0' 15' 30'

Indiana tie card references:

IN02\_T18NR2E27\_72 IN02\_T18NR2E28\_80

IN02\_T18NR2E33\_08 IN02\_T18NR2E34\_00

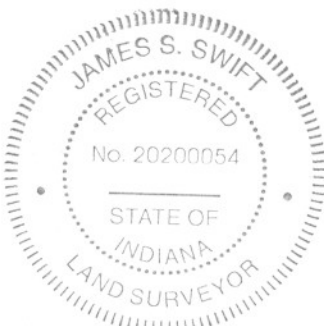


- A - S.E. corner, brick sun room, 66.51'
- B - S.W. corner, brick house, 27.24'
- C - S.E. corner, brick house, 54.60'
- D - 5/8" rebar (Schneider, Firm #0001) 66.59' meas. (66.74' plat).
- E - 5/8" rebar (Schneider, Firm #0001) 19.28' meas. (19.35' plat).

The harrison monument was set in place of a 5/8 inch rebar found.

No entries were found for this corner in the BCS stone record. A BCS tie card dated March 6, 1991 is ambiguous about the specific corner, but shows ties to a 5/8 inch rebar. This corner was excavated on September 19 and 23, 2008. Prior to excavation, an old wood post was visible with a 5/8 inch rebar 0.5 foot south. The old E-W fence was not attached to the post and the rebar was in the fence. Excavation revealed a column of rocks ranging from 4 inches by 4 inches to 12 inches by 12 inches approximately 1.5 feet east of the post. The rocks were removed and inspected. None contained specific markings and there was no evidence that these rocks had been purposely set as corner stones. Private surveys which have tied to this corner have held the rebar. The rebar is clearly shown as the corner on the plat of Cobblestone Lakes, Section 5, adjoining this corner to the north. The preponderance of evidence favors the rebar as the corner and it was held as such. The rebar was removed. The post was also removed except for the bottom portion, being from 2 feet deep to 4 feet deep. The harrison was set in concrete in the position of the rebar. This corner was originally established as a wood post in July, 1821.

Eagle Township



*Kenneth E. Hedge*  
Kenneth E. Hedge, County Surveyor

*James S. Swift*  
James S. Swift, IN LS 20200054

March 11, 2009

Section 28 T18N, R2E	Section 27 T18N, R2E
Section 33 T18N, R2E	Section 34 T18N, R2E



# SECTION CORNER RECORD

# SE 500-1000

## BOONE COUNTY SURVEYOR'S OFFICE

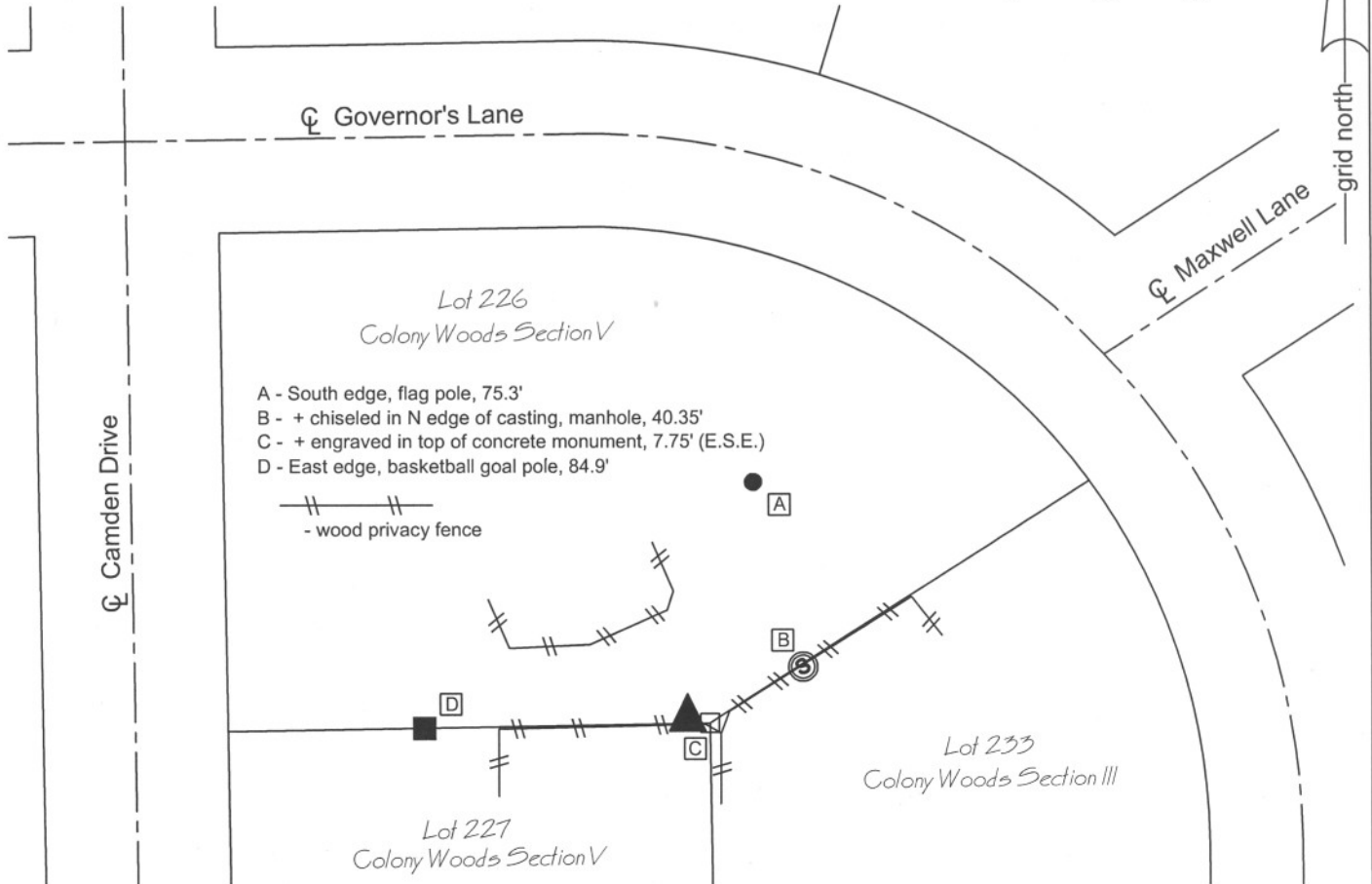
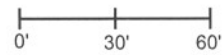
State Plane grid coordinates NAD83 (NSRS 2007):  
 North: 1720489.92 East: 3178195.42 (U.S. survey feet)

Indiana tie card references:  
 IN02\_T18NR2E26\_72 IN02\_T18NR2E27\_80  
 IN02\_T18NR2E34\_08 IN02\_T18NR2E35\_00

Type of monument: Harrison, 4" disk 'Section Corner'  
 Depth: 4 inches above adjacent grade in concrete pillar

### CORNER WITNESS DETAIL

SCALE 1" = 60'



The Harrison monument was set over a railroad rail found. No entries were found for this corner in the BCS stone record, nor were any BCS tie cards found. This corner falls within lot 227 of Colony Woods subdivision, Section V (Plat Book 6, page 22). The location of the corner relative to the platted lots is more clearly shown on the plat of Colony Woods subdivision, Section III (Plat Book 6, page 9). Most recorded surveys referencing this corner state that the location was reconstructed from the geometry of the plats. A railroad rail on end was found, approximately 4 inches deep, at the location shown on the plat. The position of the railroad rail fits precisely with the plat geometry as reconstructed from centerline control monuments in Governor's Lane. It is known that railroad rails were set by this office and by Anderson and Associates Surveyors in the late 1960s and early 1970s. The plats were recorded in the late 1970s. No other evidence of the section corner was found. The railroad rail was held as marking the corner and the Harrison monument was set directly over the top of the center of the neck of the rail. This corner was originally established as a wood post in July, 1821.

Eagle Township



*Kenneth E. Hedge*  
 Kenneth E. Hedge, County Surveyor

*James S. Swift*  
 James S. Swift, IN LS 20200054

March 11, 2009

Section 27 T18N, R2E	Section 26 T18N, R2E
Section 34 T18N, R2E	Section 35 T18N, R2E

PHOTOGRAPHIC DOCUMENTATION

Date of photography: October 9, 2008

View of railroad rail (section corner) and concrete monument (subdivision corner) from northwest.



For details and documentation, refer to related sheet "Section Corner Record."