

# SECTION CORNER RECORD

SE 400-300

## BOONE COUNTY SURVEYOR'S OFFICE

State Plane grid coordinates NAD83 (NSRS 2007):

North: 1724808.96 East: 3140643.24 (U.S. survey feet)

Type of monument: Harrison, 4" disk 'Section Corner'

Depth: 1 inch below adjacent road surface

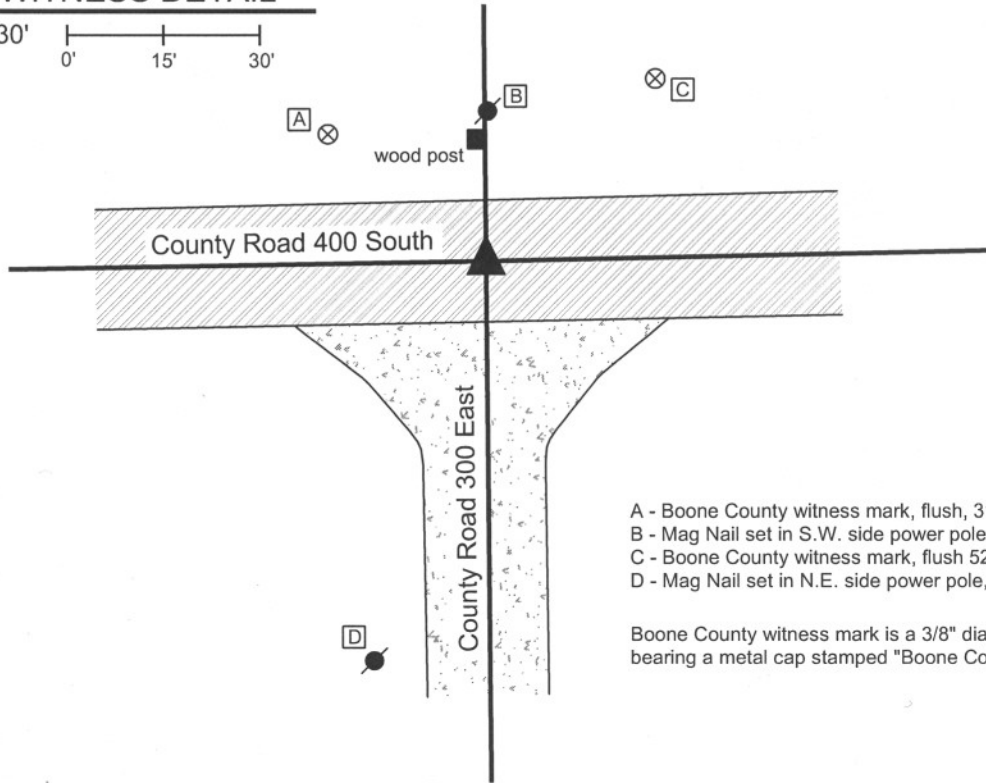
Indiana tie card references:

IN02\_T18NR1E21\_80 IN02\_T18NR1E22\_72

IN02\_T18NR1E27\_00 IN02\_T18NR1E28\_08

### CORNER WITNESS DETAIL

SCALE 1" = 30'



- A - Boone County witness mark, flush, 31.77'
- B - Mag Nail set in S.W. side power pole, 2.0' a.g., 22.04'
- C - Boone County witness mark, flush 52.32'
- D - Mag Nail set in N.E. side power pole, 2.0' a.g., 63.68'

Boone County witness mark is a 3/8" diameter x 2' long rebar bearing a metal cap stamped "Boone County Witness Point."

The harrison monument was set directly over the top, center of a stone found and accepted as marking the corner.

No BCS stone records or tie cards are known for this corner beyond the original establishment of the corner by federal surveyors.

This corner was excavated on May 16, 2008. Prior to excavation a mag nail was visible flush with the road surface at the approximate intersection of the two county roads. Excavation yielded an iron pipe below and slightly N.E. of the mag nail. Further excavation yielded a stone found at 24 inches. This stone measures 14 inches NW-SE and 10 inches NE-SW. The top 6 inches of the stone were exposed at which point the stone remained entirely stable in the clay, indicating that it protrudes deeper into the clay. The top 2 inches of the stone protrude into the gravel base at the bottom of the road. The harrison was set directly over the top, center of the stone. The mag nail was 0.55 foot North and 1.25 foot West of the top, center of the stone and the pipe was 0.85 North and 1.1 foot West.

This corner was originally established as a wood post in June, 1820.



*Kenneth E. Hedge*  
Kenneth E. Hedge, County Surveyor

*James S. Swift*  
James S. Swift, IN LS 20200054  
March 11, 2009

Perry Township

|                         |                         |
|-------------------------|-------------------------|
| Section 21<br>T18N, R1E | Section 22<br>T18N, R1E |
| Section 28<br>T18N, R1E | Section 27<br>T18N, R1E |

PHOTOGRAPHIC DOCUMENTATION

Date of photography: May 16, 2008

Corner stone - overhead view from south.



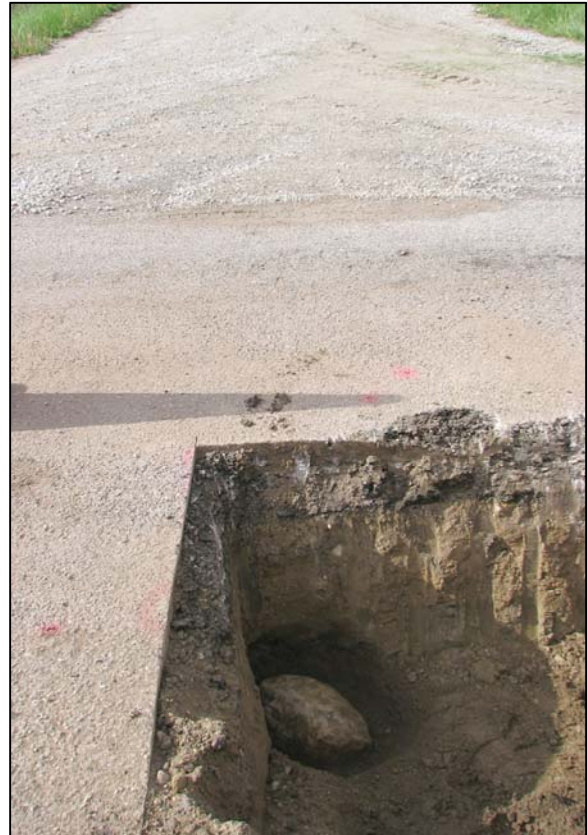
Corner stone - overhead view from west.



View from west, looking across corner stone and along County Road 400 South to the east.



View from north, looking across corner stone to north end of County Road 300 East to the south.



For details and documentation, refer to related sheet "Section Corner Record."

# SECTION CORNER RECORD

SE 400-350

## BOONE COUNTY SURVEYOR'S OFFICE

State Plane grid coordinates NAD83 (NSRS 2007):

North: 1724863.53 East: 3143309.18 (U.S. survey feet)

Type of monument: Harrison, 4" disk 'Section Corner'

Depth: One inch below adjacent road surface

Indiana tie card references:

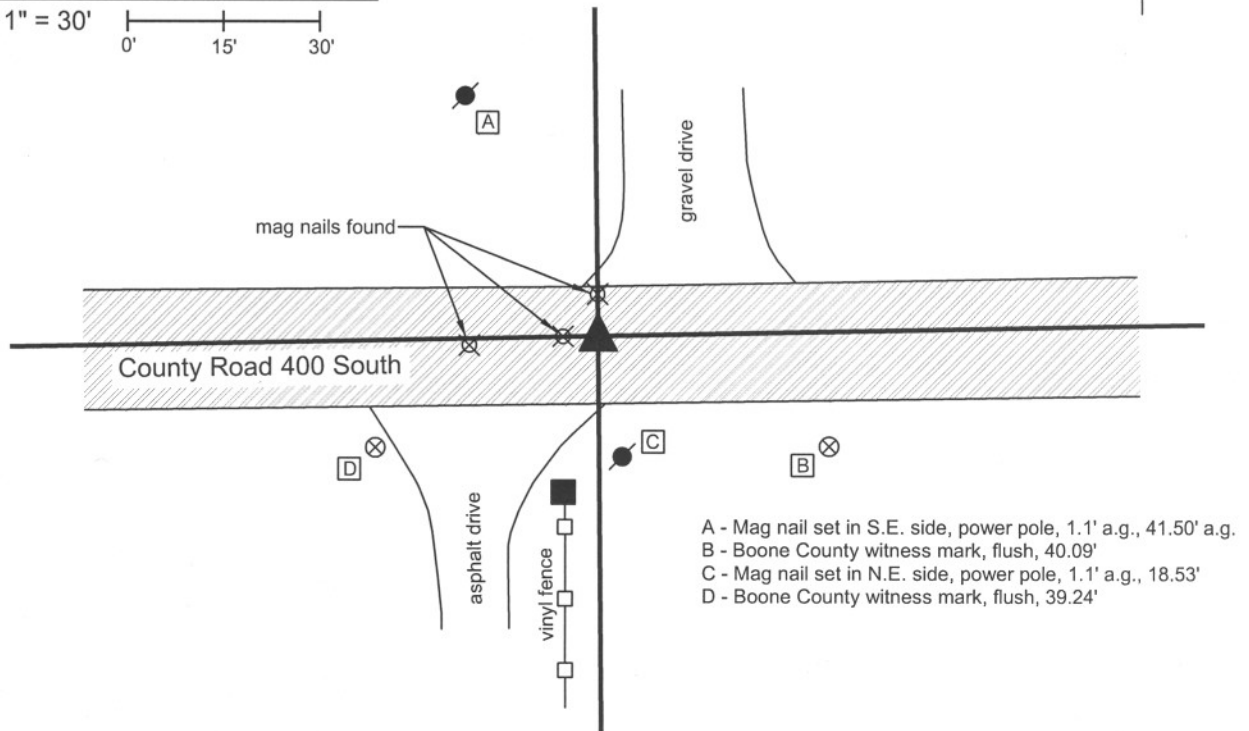
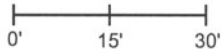
IN02\_T18NR1E22\_76

IN02\_T18NR1E27\_04

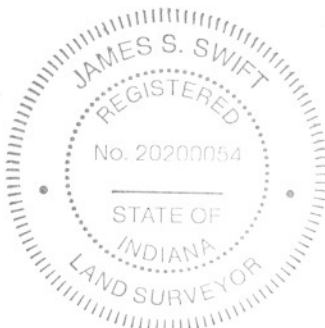


### CORNER WITNESS DETAIL

SCALE 1" = 30'



The Harrison monument was set over the top, high point of a stone found and accepted as marking the corner. No previous BCS stone records or tie cards were found for this corner. This corner was excavated on May 19, 2008. Prior to excavation, 2 mag nails were visible in the vicinity of the corner, but neither fit with the location shown on private surveys. Metal detection and minor excavation in the immediate vicinity of the corner shown on private surveys yielded a railroad spike several inches below grade. Excavation centered on the railroad spike yielded a stone, 11 inches by 11 inches by 11 inches at 12 inches deep. This stone was in the gravel road base, not in the clay. It was removed and another stone was found below it at 30 inches deep. The second stone is 14 inches E-W by 14 inches N-S, well embedded in the clay at the bottom of the gravel base of the road bed. The top 6 inches of the stone were exposed at which point the stone remained entirely stable in the clay indicating that it protrudes deep into the clay. The Harrison monument was set directly over the high point of the top of the stone which is approximately the southeast corner of the top of the stone. The railroad spike was 1.1 foot south and 0.2 foot east of the high point. This corner was originally established as a wood post in June, 1820.



*Kenneth E. Hedge*  
Kenneth E. Hedge, County Surveyor

*James S. Swift*  
James S. Swift, IN LS 20200054  
March 11, 2009

Perry Twp

|                         |
|-------------------------|
| Section 22<br>T18N, R1E |
| ▲                       |
| Section 27<br>T18N, R1E |

PHOTOGRAPHIC DOCUMENTATION

Date of photography: May 19, 2008

Upper corner stone - overhead view from west.



Upper corner stone - overhead view from north.



Lower corner stone - overhead view from west.



Lower corner stone - close up.



View from east, looking across hole and along County Road 400 South to the east. The upper stone is visible on the road surface.



For details and documentation, refer to related sheet "Section Corner Record."

# SECTION CORNER RECORD

# SE 400-400

## BOONE COUNTY SURVEYOR'S OFFICE

State Plane grid coordinates NAD83 (NSRS 2007):

North: 1724913.90 East: 3145969.14 (U.S. survey feet)

Type of monument: Harrison, 4" disk 'Section Corner'

Depth: flush with adjacent ground

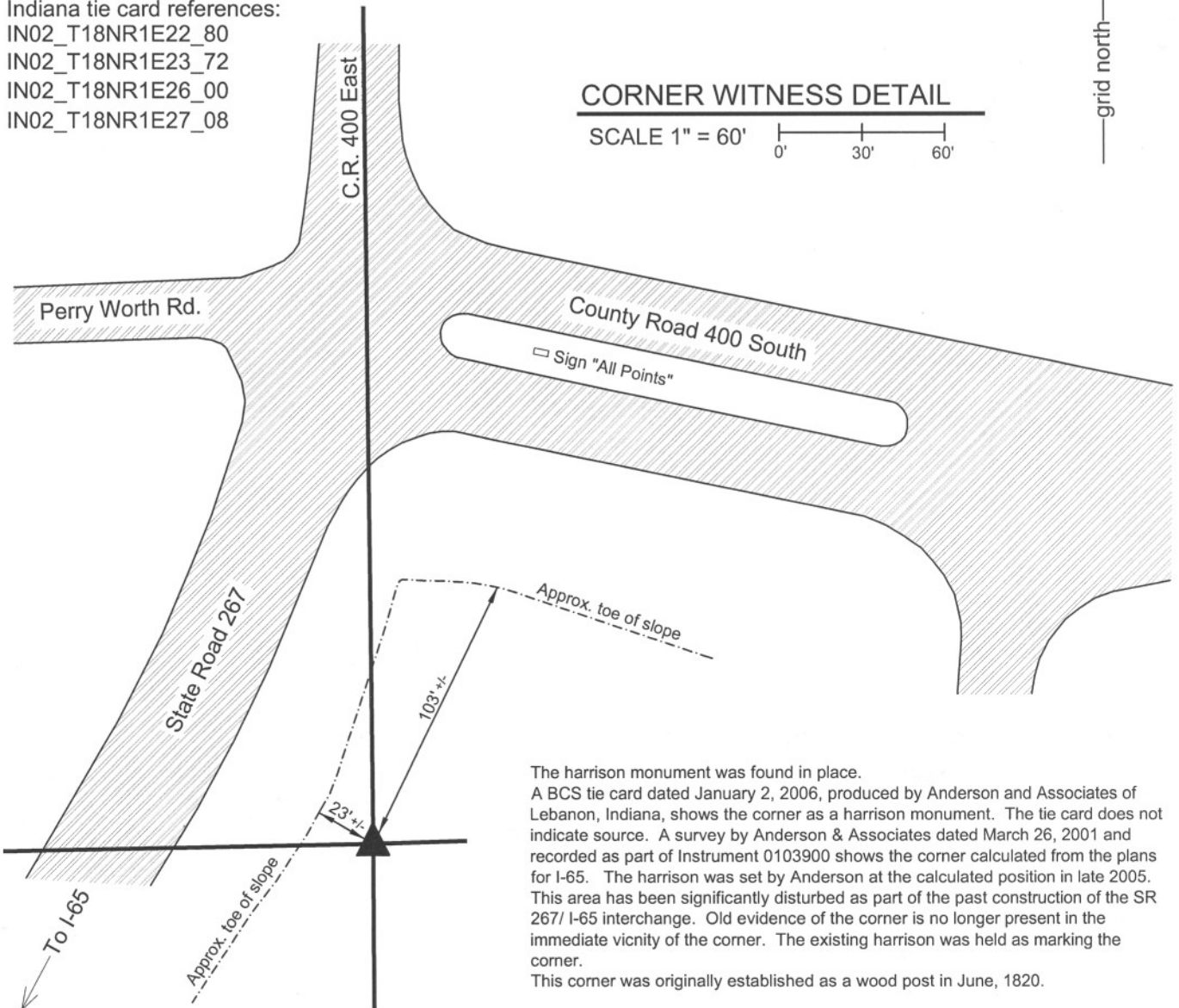
Indiana tie card references:

IN02\_T18NR1E22\_80

IN02\_T18NR1E23\_72

IN02\_T18NR1E26\_00

IN02\_T18NR1E27\_08



The harrison monument was found in place. A BCS tie card dated January 2, 2006, produced by Anderson and Associates of Lebanon, Indiana, shows the corner as a harrison monument. The tie card does not indicate source. A survey by Anderson & Associates dated March 26, 2001 and recorded as part of Instrument 0103900 shows the corner calculated from the plans for I-65. The harrison was set by Anderson at the calculated position in late 2005. This area has been significantly disturbed as part of the past construction of the SR 267/ I-65 interchange. Old evidence of the corner is no longer present in the immediate vicinity of the corner. The existing harrison was held as marking the corner. This corner was originally established as a wood post in June, 1820.



*Kenneth E. Hedge*  
 Kenneth E. Hedge, County Surveyor

*James S. Swift*  
 James S. Swift, IN LS 20200054  
 March 11, 2009

|                         |                         |
|-------------------------|-------------------------|
| Perry Twp Worth Twp     |                         |
| Section 22<br>T18N, R1E | Section 23<br>T18N, R1E |
| Section 27<br>T18N, R1E | Section 26<br>T18N, R1E |

# SECTION CORNER RECORD

SE 450-300

## BOONE COUNTY SURVEYOR'S OFFICE

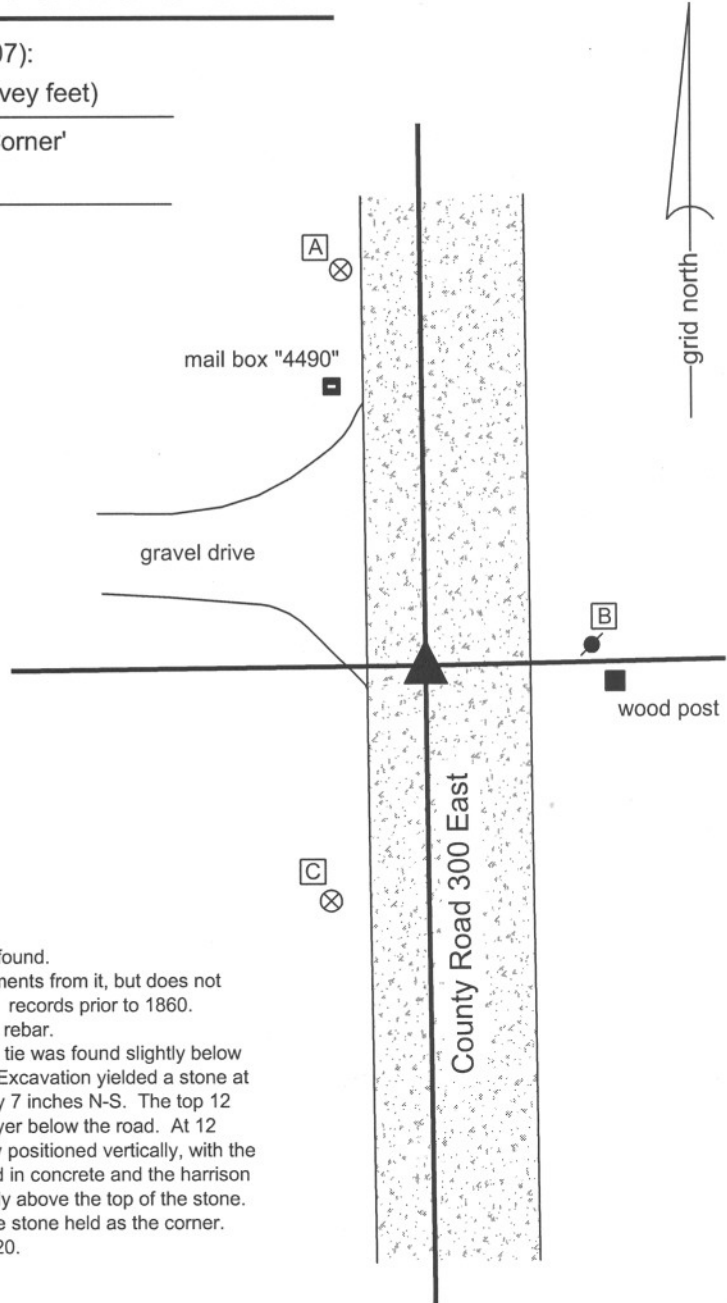
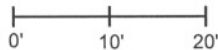
State Plane grid coordinates NAD83 (NSRS 2007):  
North: 1722150.56 East: 3140670.32 (U.S. survey feet)

Type of monument: Harrison, 4" disk 'Section Corner'  
Depth: 4 inches below gravel road surface

Indiana tie card references:  
IN02\_T18NR1E27\_36  
IN02\_T18NR1E28\_44

### CORNER WITNESS DETAIL

SCALE 1" = 20'



- A - Boone County witness mark, flush, 42.17'
- B - Mag nail set in W. side power pole, 1.8' a.g., 16.8'
- C - Boone County witness mark, flush, 26.40'

Boone County witness mark is a 3/8" diameter x 2' long rebar bearing a metal cap stamped "Boone County Witness Point."

The Harrison monument was set directly over the top of a stone found. A BCS record of June 25, 1852 shows this corner and measurements from it, but does not specify the monument. This is consistent with other similar BCS records prior to 1860. A BCS tie card dated May 19, 1994 shows the corner as being a rebar. A 1/2 inch diameter rebar which fits with the one remaining 1991 tie was found slightly below the gravel road. This corner was excavated on May 14, 2008. Excavation yielded a stone at 9 inches deep. The top of the stone measures 10 inches E-W by 7 inches N-S. The top 12 inches of the stone were exposed, 8 of which were in the clay layer below the road. At 12 inches exposed, the stone remained entirely stable and is clearly positioned vertically, with the bottom deeper yet in the clay. The top of the stone was encased in concrete and the harrison was truncated at 5 inches and set in a column of concrete directly above the top of the stone. The rebar was 2.1 feet south and 0.6 feet east of the point on the stone held as the corner. This corner was originally established as a wood post in June 1820.

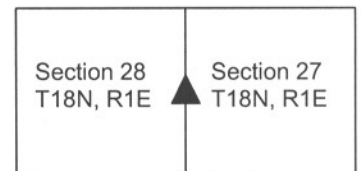


*Kenneth E. Hedge*  
Kenneth E. Hedge, County Surveyor

*James S. Swift*  
James S. Swift, IN LS 20200054

March 11, 2009

Perry Township



PHOTOGRAPHIC DOCUMENTATION

Date of photography: May 14, 2008

Corner stone - view from south as stone is first exposed.



Corner stone - view from south with most of stone exposed.



View from east looking across stone and into occupation line in form of hedge to the east.



Corner stone - view from east.



Corner stone - close up from east.



For details and documentation, refer to related sheet "Section Corner Record."

# SECTION CORNER RECORD

SE 450-400

## BOONE COUNTY SURVEYOR'S OFFICE

State Plane grid coordinates NAD83 (NSRS 2007):  
North: 1722264.49 East: 3145980.96 (U.S. survey feet)

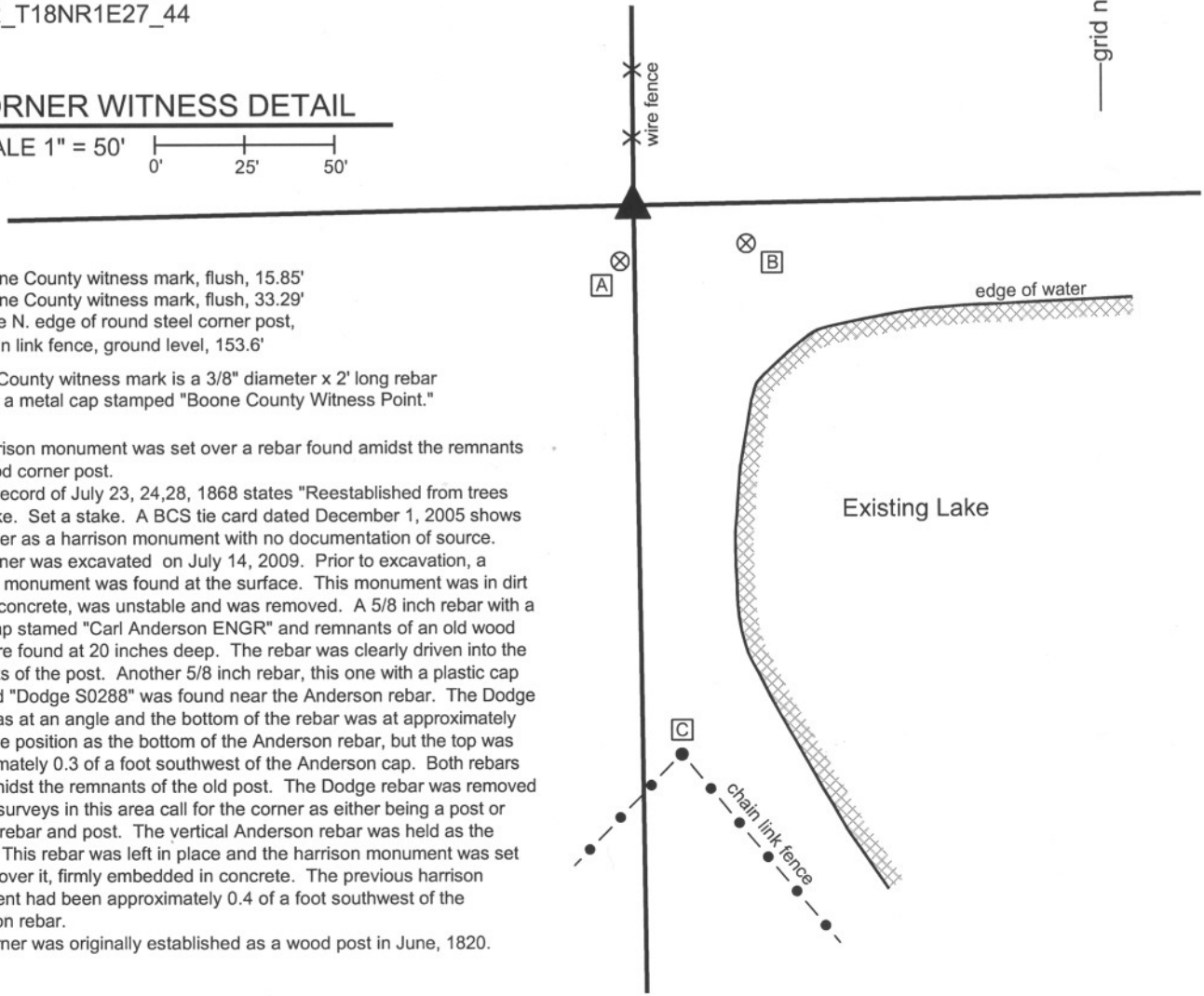
Type of monument: Harrison, 4" disk 'Section Corner'  
Depth: Three inches above adjoining ground.

Indiana tie card references:  
IN02\_T18NR1E26\_36  
IN02\_T18NR1E27\_44



### CORNER WITNESS DETAIL

SCALE 1" = 50'  
0' 25' 50'



- A - Boone County witness mark, flush, 15.85'
- B - Boone County witness mark, flush, 33.29'
- C - base N. edge of round steel corner post, chain link fence, ground level, 153.6'

Boone County witness mark is a 3/8" diameter x 2' long rebar bearing a metal cap stamped "Boone County Witness Point."

The harrison monument was set over a rebar found amidst the remnants of a wood corner post.

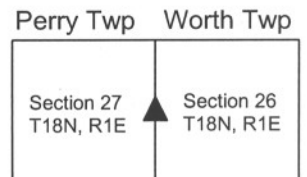
A BCS record of July 23, 24,28, 1868 states "Reestablished from trees and stake. Set a stake. A BCS tie card dated December 1, 2005 shows the corner as a harrison monument with no documentation of source. This corner was excavated on July 14, 2009. Prior to excavation, a harrison monument was found at the surface. This monument was in dirt with no concrete, was unstable and was removed. A 5/8 inch rebar with a metal cap stamed "Carl Anderson ENGR" and remnants of an old wood post were found at 20 inches deep. The rebar was clearly driven into the remnants of the post. Another 5/8 inch rebar, this one with a plastic cap stamped "Dodge S0288" was found near the Anderson rebar. The Dodge rebar was at an angle and the bottom of the rebar was at approximately the same position as the bottom of the Anderson rebar, but the top was approximately 0.3 of a foot southwest of the Anderson cap. Both rebars were amidst the remnants of the old post. The Dodge rebar was removed. Private surveys in this area call for the corner as either being a post or being a rebar and post. The vertical Anderson rebar was held as the corner. This rebar was left in place and the harrison monument was set directly over it, firmly embedded in concrete. The previous harrison monument had been approximately 0.4 of a foot southwest of the Anderson rebar.

This corner was originally established as a wood post in June, 1820.



*Kenneth E. Hedge*  
Kenneth E. Hedge, County Surveyor

*James S. Swift*  
James S. Swift, IN LS 20200054  
July 14, 2010





# SECTION CORNER RECORD

SE 500-300

## BOONE COUNTY SURVEYOR'S OFFICE

State Plane grid coordinates NAD83 (NSRS 2007):

North: 1719492.96 East: 3140701.81 (U.S. survey feet)

Type of monument: Harrison, 4" disk 'Section Corner'

Depth: 4 inches below adjoining gravel road surface.

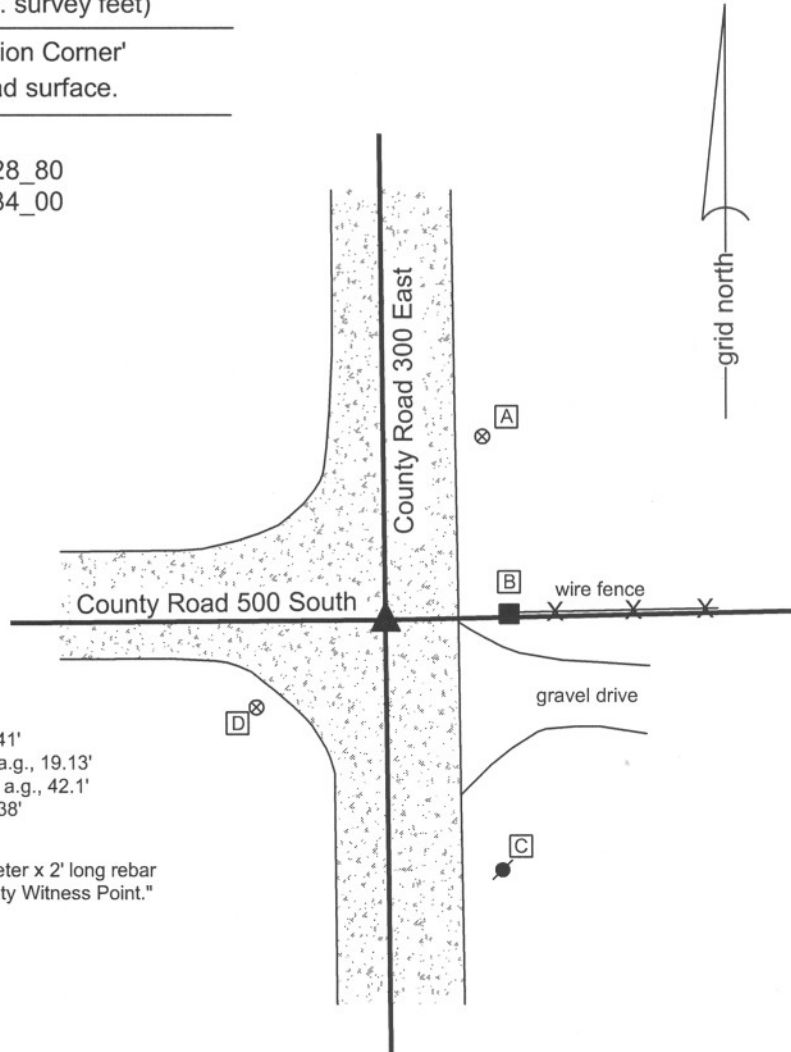
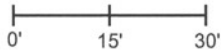
Indiana tie card references:

IN02\_T18NR1E27\_72 IN02\_T18NR1E28\_80

IN02\_T18NR1E33\_08 IN02\_T18NR1E34\_00

### CORNER WITNESS DETAIL

SCALE 1" = 30'



- A - Boone County witness mark, flush, 32.41'
- B - Mag nail set in N. side wood post, 0.5' a.g., 19.13'
- C - Mag nail set in N. side power pole, 1.7' a.g., 42.1'
- D - Boone County witness mark, flush, 24.38'

Boone County witness mark is a 3/8" diameter x 2' long rebar bearing a metal cap stamped "Boone County Witness Point."

The Harrison monument was set over the top, high point of a stone found.

No known BCS records were found for this corner beyond the original establishment of the corner by federal surveyors.

Prior to excavation, a 1/2" diameter rebar was found at the approximate intersection of the two roads and at the extension of the old fence to the east.

The source of the rebar is not known. The corner was excavated on May 15, 2008. Excavation yielded a stone found at 16 inches deep. The top of the stone is 15 inches E-W by 11 inches N-S, protruding 2 inches out of the clay base into the gravel sub-base of the road. The top 7 inches of the stone were exposed, at which point the stone remained entirely stable, indicating that it protrudes further into the clay. The Harrison monument was set directly over the top, high point of the stone. The rebar, removed during excavation, was 0.7 feet N and 0.5 feet E of the top, high point of the stone.

This corner was originally established as a wood post in June, 1820.



*Kennett E. Hedge*  
Kenneth E. Hedge, County Surveyor

*James S. Swift*  
James S. Swift, IN LS 20200054

March 11, 2009

Perry Township

|                         |                         |
|-------------------------|-------------------------|
| Section 28<br>T18N, R1E | Section 27<br>T18N, R1E |
| Section 33<br>T18N, R1E | Section 34<br>T18N, R1E |

PHOTOGRAPHIC DOCUMENTATION

Date of photography: May 15, 2008

Corner stone - view from above.



Corner stone - view from the south.



View from west, looking across hole to wood end post at the terminus of an old fence to the east. The stone is not visible, but shown by arrow.



View from the east looking across the hole and along County Road 500 South to the west.



For details and documentation, refer to related sheet "Section Corner Record."

# SECTION CORNER RECORD

SE 500-350

## BOONE COUNTY SURVEYOR'S OFFICE

State Plane grid coordinates NAD83 (NSRS 2007):

North: 1719548.75 East: 3143359.12 (U.S. survey feet)

Type of monument: Harrison, 4" disk 'Section Corner'

Depth: Flush with adjoining grade

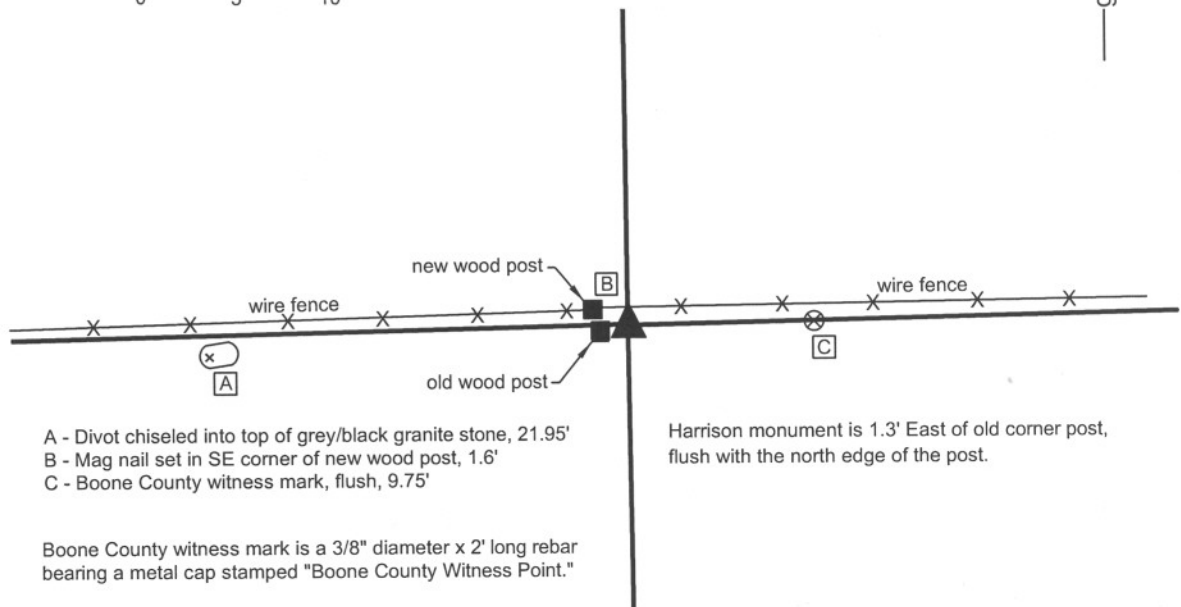
Indiana tie card references:

IN02\_T18NR1E27\_76

IN02\_T18NR1E34\_04

### CORNER WITNESS DETAIL

SCALE 1" = 10'



- A - Divot chiseled into top of grey/black granite stone, 21.95'
- B - Mag nail set in SE corner of new wood post, 1.6'
- C - Boone County witness mark, flush, 9.75'

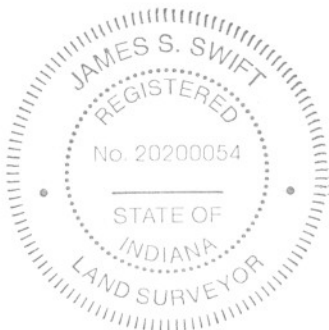
Harrison monument is 1.3' East of old corner post, flush with the north edge of the post.

Boone County witness mark is a 3/8" diameter x 2' long rebar bearing a metal cap stamped "Boone County Witness Point."

The Harrison monument was set over the top of a stone found.

A BCS record dated May 26, 1892 states "reestablished by measure and running line. Set rock marked + 11x9x8 inches at corner. Set rock marked + 6,12,8 under." No BCS tie cards were found for this corner. This corner was excavated on April 21 and 23, 2008. Prior to excavation two wood posts were visible, surrounded by numerous rocks of a variety of types and sizes. The old post is situated slightly south of the new post and existing wire fence. The record lower stone was found, lifted and confirmed in its size and marking. The stone was replaced in its original position and the Harrison monument was set in a column of concrete within a piece of 12 inch smooth core black plastic storm pipe set vertically. The Harrison is flush with the adjoining ground, 1.3 feet east of and even with the north edge of the old post. The record upper stone was not found. Refer to the attached sheet for photographic documentation of the record lower stone.

This corner was originally established as a wood post in June, 1820.



*Kenneth E. Hedge*  
Kenneth E. Hedge, County Surveyor

*James S. Swift*  
James S. Swift, IN LS 20200054

March 11, 2009

Perry Township

Section 27  
T18N, R1E

Section 34  
T18N, R1E

PHOTOGRAPHIC DOCUMENTATION

Date of photography: April 21 & April 23, 2008

Two posts and hole in which corner stone was found - view from southeast.



Corner stone - view from above.



Corner stone and old post - stone temporarily removed from ground.



Corner stone - close up.



Same picture as above with etched "+" enhanced for ease of visual detection.



Same picture as above with etched "+" enhanced for ease of visual detection.



For details and documentation, refer to related sheet "Section Corner Record."

# SECTION CORNER RECORD

## BOONE COUNTY SURVEYOR'S OFFICE

SE 500-400

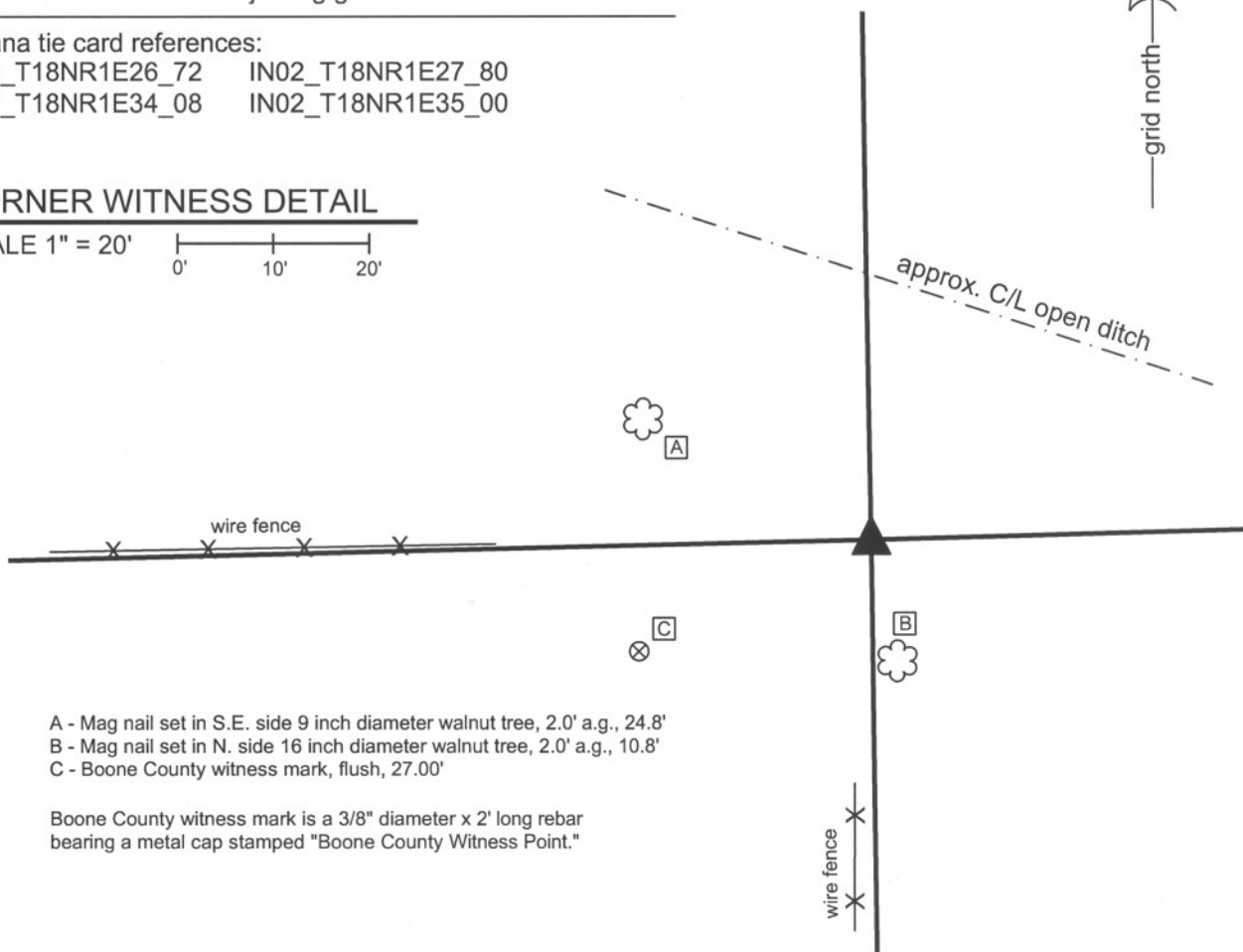
State Plane grid coordinates NAD83 (NSRS 2007):  
 North: 1719609.07 East: 3146019.02 (U.S. survey feet)

Type of monument: Harrison, 4" disk 'Section Corner'  
 Depth: 4 inches above adjoining grade.

Indiana tie card references:  
 IN02\_T18NR1E26\_72 IN02\_T18NR1E27\_80  
 IN02\_T18NR1E34\_08 IN02\_T18NR1E35\_00

### CORNER WITNESS DETAIL

SCALE 1" = 20'



A - Mag nail set in S.E. side 9 inch diameter walnut tree, 2.0' a.g., 24.8'  
 B - Mag nail set in N. side 16 inch diameter walnut tree, 2.0' a.g., 10.8'  
 C - Boone County witness mark, flush, 27.00'

Boone County witness mark is a 3/8" diameter x 2' long rebar bearing a metal cap stamped "Boone County Witness Point."

The harrison monument was set in place of a rebar found at the base of a cedar post. A BCS record of July 23,24,28, 1868 states "Reestablished from Wh Ash Stump. Set a stake." No recent BCS tie cards were found referencing this corner. All recorded surveys found reference a rebar as the corner, including the preliminary survey to Perry Industrial Park, recorded in Survey Book 4, page 22 in the Office of the Boone County Recorder. This corner was excavated October 20, 2009. Prior to excavation, a wood post was visible approximately in line with portions of old fence to the West and South. A 5/8 inch rebar bearing a plastic cap stamped "Dodge S0288" was found at the east edge of the base of the post. The post was a cedar post, rotten and broken-off at ground level but intact below the ground. Evidence of old fences to the East, West and South were found at the post, below ground. No stones were found. As the rebar was adjacent to the post and has been held for the corner by all known surveys, the rebar was held as the corner and the harrison monument was set in its place. Uncertainties with the location of the corner with respect to different positions of the rebar and post are approximately one-half foot. This corner was originally established as a wood post in July, 1820.



*Kenneth E. Hedge*  
 Kenneth E. Hedge, County Surveyor

*James S. Swift*  
 James S. Swift, IN LS 20200054  
 July 14, 2010

|           | Perry Twp               | Worth Twp               |
|-----------|-------------------------|-------------------------|
|           | Section 27<br>T18N, R1E | Section 26<br>T18N, R1E |
| Perry Twp | Section 34<br>T18N, R1E | Section 35<br>T18N, R1E |