

# SECTION CORNER RECORD

## BOONE COUNTY SURVEYOR'S OFFICE

NW 750-700

State Plane grid coordinates NAD83 (2011):

Corner: North: 1785227.93 East: 3087853.78 (U.S. survey feet)

Witness: North: 1785228.43 East: 3087853.78 (U.S. survey feet)

Corner: Wood corner post

Witness: 5/8 inch rebar with metal cap stamped 'Boone County Surveyor'

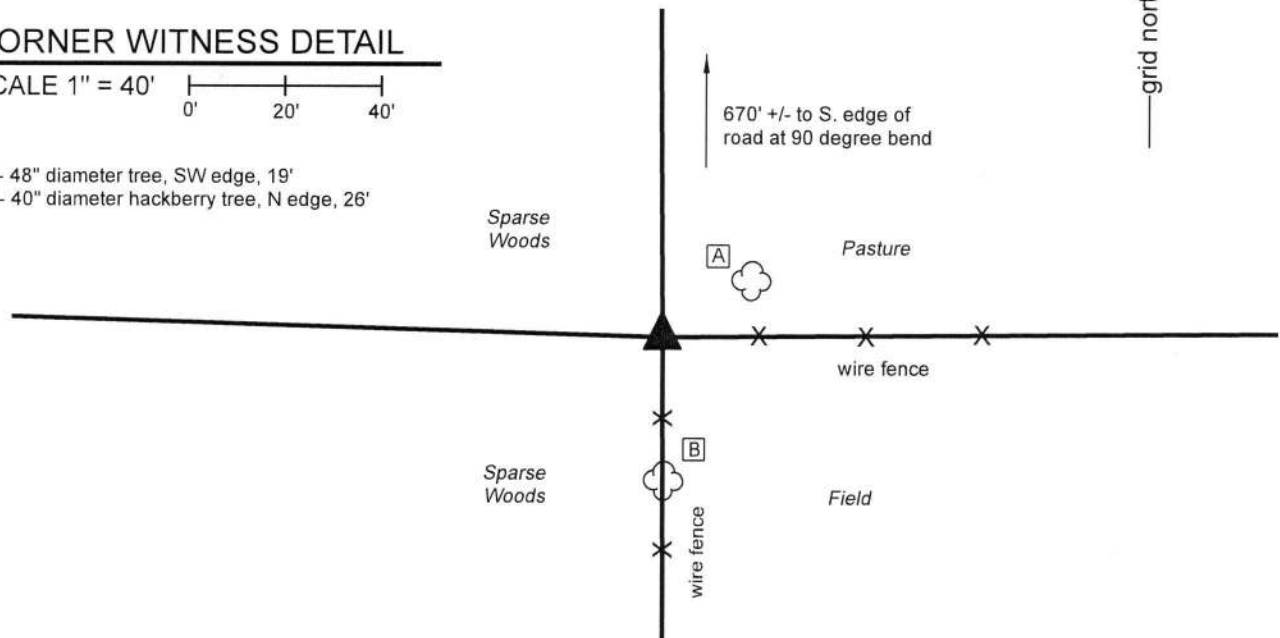
Indiana tie card references:

IN02\_T20NR2W26\_44 IN02\_T20NR2W25\_36

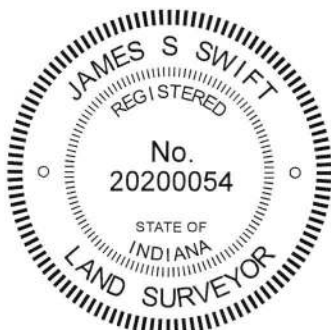
### CORNER WITNESS DETAIL

SCALE 1" = 40'

- A - 48" diameter tree, SW edge, 19'
- B - 40" diameter hackberry tree, N edge, 26'



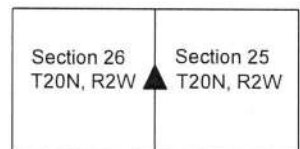
The wood corner post was found in place. The post is considered the corner. The 5/8 inch diameter rebar with 'Boone County Surveyor' cap is a witness, set at the north edge of the post, 0.5 foot north of the center of the post. A BCS record of August 20, 1853 states, with respect to this corner, "Stone set. No tree." No recent BCS tie cards were found referencing the corner. A survey by Jonathon E. Hause, LS20600040, recorded in Survey Book 11, pages 45-46, in the Office of the Boone County Recorder shows the corner as an 8x8 inch wood post. The associated land description, found in Instrument 201200010221 also refers to the corner as an 8x8 inch wood post. Another survey by Mr. Hause, recorded as Instrument 20070001186, shows the corner as a head post. This corner was excavated on November 20, 2018. Prior to excavation, a 5x5 inch wood corner post was found at the intersection of ancient fences to the west and south, 228 feet north of another wood post found at the intersection of fences to the north and west. The found post is clearly the same as is called in the aforementioned surveys and land description, though the size does not match that called in those documents. Excavation around the post revealed a stone found at 14 inches deep, the top center of which is 1.5 feet northwest of the post. The stone is large and conspicuously proximate to the post, but no marks were found on the stone, it did not appear to bear the characteristics of a stone purposely set to mark the corner and could not be positively identified to be a corner stone. No other stones were found in the immediate vicinity of the post. The post works well with the relative positions of adjacent corners. A rebar found 650.3 feet north of the post, being on the south edge of the county road to the north, at the 90 degree bend in said road, falls precisely along the line connecting the post and the section corner to the north (see BCS corner NW-800-700). The post was accepted as marking the corner. The post was left in place, witnessed by a BCS capped rebar as noted above. This corner was originally established as a wood post in 1829.



*Kenneth E. Hedge*  
 Kenneth E. Hedge, County Surveyor

*James S. Swift*  
 James S. Swift, IN LS 20200054  
 February 12, 2019

Sugar Creek Township



# SECTION CORNER RECORD

NW 800-700

## BOONE COUNTY SURVEYOR'S OFFICE

State Plane grid coordinates NAD83 (CORS96):

North: 1787883.15 East: 3087831.72 (U.S. survey feet)

Type of monument: Harrison, 4" disk 'Section Corner'

Depth: flush with adjacent road surface

Indiana tie card references:

IN02\_T20NR2W23\_80 IN02\_T20NR2W24\_72

IN02\_T20NR2W26\_08 IN02\_T20NR2W25\_00

### CORNER WITNESS DETAIL

SCALE 1" = 40'



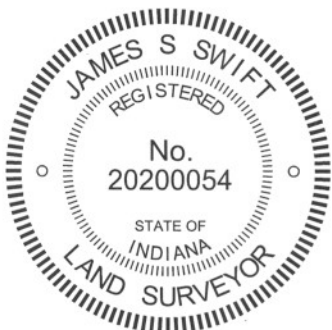
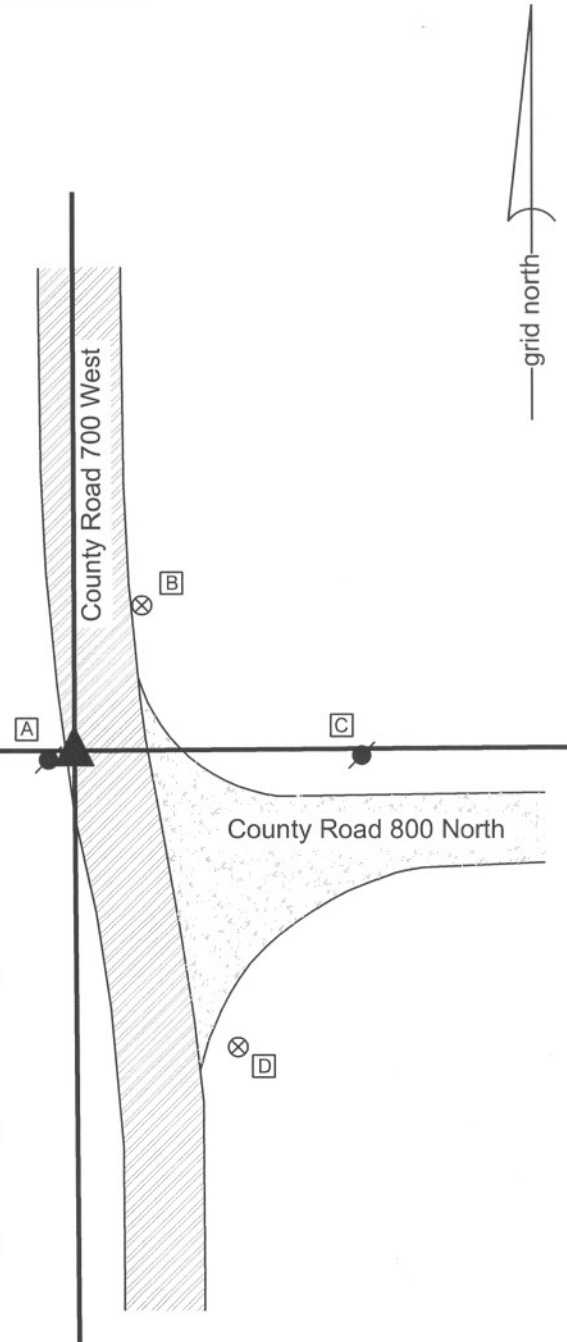
- A - Mag nail set in E. side power pole, 10 in. a.g., 3.04'
- B - Boone County witness mark, flush, 33.32'
- C - Mag nail set in W. side power pole, 2' a.g., 57.76'
- D - Boone County witness mark, flush, 70.36'

Boone County witness mark is a 3/8" diameter x 2' long rebar bearing a metal cap stamped "Boone County Witness Point."

The harrison monument was set over a vertical section of railroad rail found. No specific descriptions of this corner were found in the BCS Surveyor's Record beyond the original establishment of the corner as a wood post in 1829. The corner is shown on records of 1832, but not described. It is shown as the terminal point for measurements on records of 1889 and 1907. A BCS tie card dated October 2, 1964 states 'pile 3" x 5" stones found. RRR set.'

This corner was excavated on March 29, 2011 in response to questions about GIS parcel mapping in the vicinity. Prior to excavation a PK nail was found at the edge of County Road 700 West, in line with the southerly prolongation of the center of the road to the north and in line with the westerly prolongation of a fence to the west. The nail was removed and a rebar with a plastic cap stamped "Witness Point" was found below. The rebar was bent. The rebar was removed and a vertical section of railroad rail was found and 16 inches deep. The position of the rail was slightly northeast of the nail. The rail was accepted as being the monument called for on the 1964 tie card, set in place of the 'pile of stones.'

The deeds for several parcels in this immediate vicinity call for the east-west section line to be along the approximate north right-of-way of County Road 800 North and call for the north-south section line to the south of the corner as being along the approximate west right-of-way line of County Road 700 West. The position of the rail fit with this description and also fit with occupation and monumentation, relative to deed ties to the corner, for properties to the north and south of the corner. The railroad rail was held as marking the corner and was left in place. The harrison monument was set directly over the rail.



*Kenneth E. Hedge*  
 Kenneth E. Hedge, County Surveyor

*James S. Swift*  
 James S. Swift, IN LS 20200054  
 March 30, 2012

Sugar Creek Township

Section 23 T20N, R2W	Section 24 T20N, R2W
Section 26 T20N, R2W	Section 25 T20N, R2W

# SECTION CORNER RECORD

NW 800-750

## BOONE COUNTY SURVEYOR'S OFFICE

State Plane grid coordinates NAD83 (2011):  
North: 1787948.07 East: 3085150.67 (U.S. survey feet)

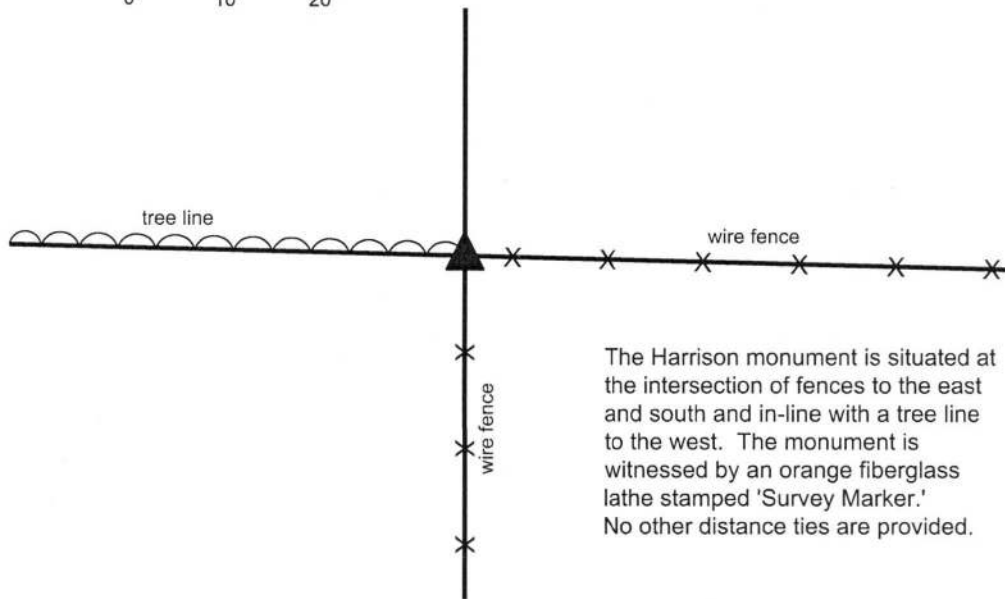
Type of monument: Harrison, 4" disk 'Section Corner'  
Depth: Three inches above adjacent ground

Indiana tie card references:  
IN02\_T20NR2W23\_76 IN02\_T20NR2W26\_04



### CORNER WITNESS DETAIL

SCALE 1" = 20'  
0' 10' 20'



The Harrison monument is situated at the intersection of fences to the east and south and in-line with a tree line to the west. The monument is witnessed by an orange fiberglass lathe stamped 'Survey Marker.' No other distance ties are provided.

The Harrison monument was set in place of a wood corner post found.

No specific descriptions of this corner were found in the BCS Surveyor's record beyond the original establishment of the corner as a wood post in 1829. No recent BCS tie cards were found referencing the corner. A survey by Ronald E. Wharry dated October 31, 2007 shows the corner as a wood head post.

This corner was excavated on October 24, 2018. Prior to excavation, the approximate position of the corner was determined at the intersection of standing fences immediately to the east and south. No corner post was observed standing and the physical corner post was found lying on the ground nearby. The position of the post as shown on the Wharry survey fit well with the position of the corner determined by the standing fences. Excavation revealed a substantial concrete base in which the post had clearly been situated previously. In the center of the concrete base was square hole of 7 inches E-W by 7 inches N-S, matching the dimensions of the post found lying on the ground. Several rocks were found in the vicinity of the corner, none of which appeared to have been purposely set to mark the corner. The position of the post, as evidenced by the concrete base and confirmed by the Wharry survey, was accepted as the best available evidence of the corner. The interior of the hole in the concrete base was excavated to one foot deep and four two-foot lengths of 3/8 inch rebars were driven into the remaining packed dirt within the hole. The hole was filled with concrete, a short section of 8 inch diameter HDPE storm pipe was set vertically over the concrete base and a Harrison monument was set within this section of pipe, above and slightly into the center of hole marking the former position of the post.



*Kenneth E. Hedge*  
Kenneth E. Hedge, County Surveyor

*James S. Swift*  
James S. Swift, IN LS 20200054  
November 28, 2018

Sugar Creek Twp

Section 23  
T20N, R2W

Section 26  
T20N, R2W