

# SECTION CORNER RECORD

NE 700-1000

## BOONE COUNTY SURVEYOR'S OFFICE

State Plane grid coordinates NAD83 (CORS96):

North: 1783963.61 East: 3177327.06 (U.S. survey feet)

Type of monument: Harrison, 4" disk 'Section Corner'

Depth: One inch below adjacent road surface

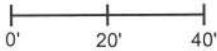
Indiana tie card references:

IN02\_T20NR2E12\_80 IN02\_T20NR2E26\_72

IN02\_T20NR2E34\_08 IN02\_T20NR2E35\_00

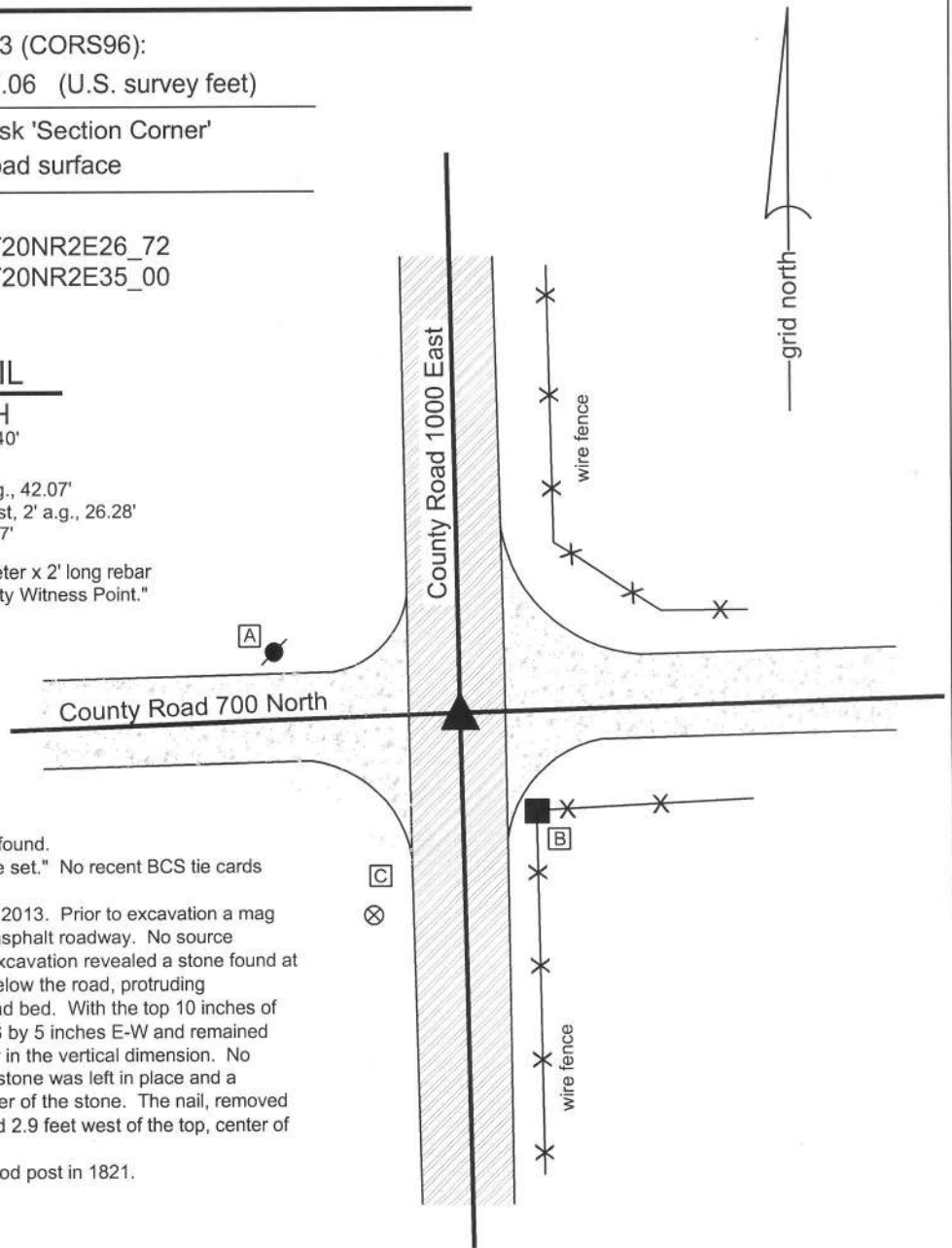
### CORNER WITNESS DETAIL

SCALE 1" = 40'



- A - Mag nail set in S. side power pole, 2' a.g., 42.07'
- B - Mag nail set in W. side, wood corner post, 2' a.g., 26.28'
- C - Boone County witness mark, flush, 46.97'

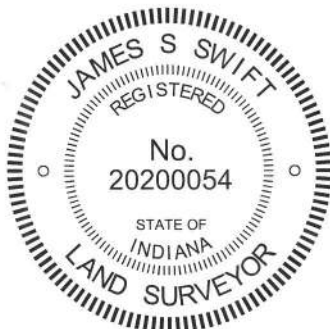
Boone County witness mark is a 3/8" diameter x 2' long rebar bearing a metal cap stamped "Boone County Witness Point."



The harrison monument was set over a stone found. A BCS record of March 25, 1853 states "Stone set." No recent BCS tie cards were found referencing this corner.

Excavation at this corner occurred on July 25, 2013. Prior to excavation a mag nail was found at 1 inch deep in a hole in the asphalt roadway. No source documentation was found for this mag nail. Excavation revealed a stone found at 20 inches deep, embedded in the clay layer below the road, protruding approximately 1 inch into the bottom of the road bed. With the top 10 inches of the stone exposed, it measured 12 inches N-S by 5 inches E-W and remained stable in the clay, indicating that it is yet larger in the vertical dimension. No specific marks were found on the stone. The stone was left in place and a harrison monument was set over the top, center of the stone. The nail, removed during excavation, had been 0.6 foot north and 2.9 feet west of the top, center of the stone.

This corner was originally established as a wood post in 1821.



*Kenneth E. Hedge*  
 Kenneth E. Hedge, County Surveyor

*James S. Swift*  
 James S. Swift, IN LS 20200054  
 February 5, 2015

Marion Township

Section 27 T20N, R2E	Section 26 T20N, R2E
Section 34 T20N, R2E	Section 35 T20N, R2E

PHOTOGRAPHIC DOCUMENTATION

Date of photography: July 25, 2013

View of the stone from above and south.



View of the stone from above.



View from above the stone, looking south along County Road 1000 East..



View from above the stone, looking west along County Road 700 North.



For details and documentation, refer to related sheet "Section Corner Record."

# SECTION CORNER RECORD

## BOONE COUNTY SURVEYOR'S OFFICE

NE 700-1050

State Plane grid coordinates NAD83 (CORS96):

North: 1784041.96 East: 3179985.07 (U.S. survey feet)

Type of monument: Harrison, 4" disk 'Section Corner'

Depth: six inches below adjacent gravel road surface

Indiana tie card references:

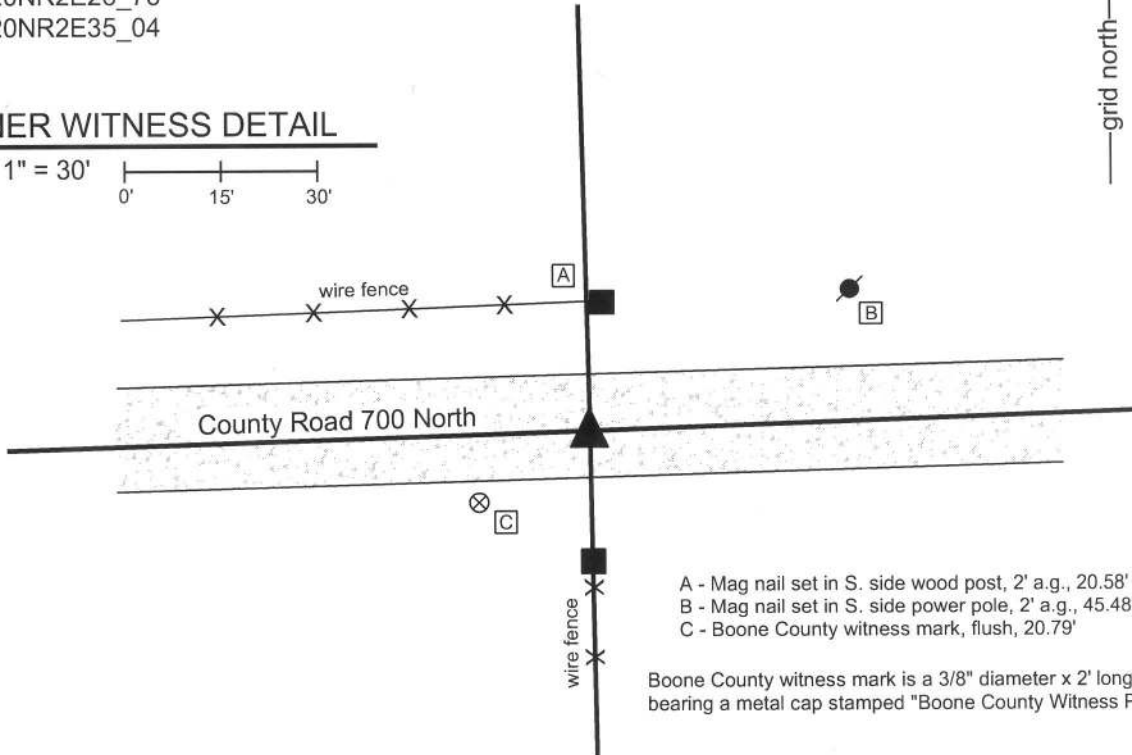
IN02\_T20NR2E26\_76

IN02\_T20NR2E35\_04



### CORNER WITNESS DETAIL

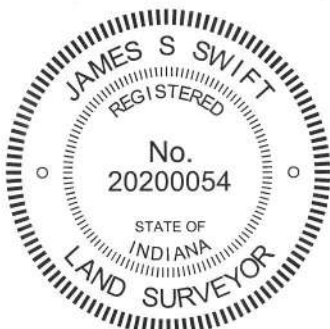
SCALE 1" = 30'



A - Mag nail set in S. side wood post, 2' a.g., 20.58'  
 B - Mag nail set in S. side power pole, 2' a.g., 45.48'  
 C - Boone County witness mark, flush, 20.79'

Boone County witness mark is a 3/8" diameter x 2' long rebar bearing a metal cap stamped "Boone County Witness Point."

The harrison monument was set in place of a railroad spike found. No specific descriptions of this corner were found in the old BCS Surveyor's Record. A BCS tie card dated August 11, 1974 states "no stone found." Excavation at this corner occurred on June 12, 2013. Prior to excavation, a railroad spike was found at 6 inches deep at a position which generally agrees with the distance ties shown on the 1974 tie card. Excavation of an area extending 5 feet north, 5 feet east, 3.5 feet south and 3.5 feet west of the railroad spike revealed no further evidence of the corner. Excavation was performed to a depth of 28-30 inches deep. The cross section of this part of the road was found to be less uniform than the road bed found at most other corners, as there is a 2 inch thick clay layer at 16 inches deep, under which is a fine, sandy gravel material. The base clay layer begins at approximately 2 feet deep. The railroad spike fits with the distance ties on the 1974 tie card and also fits with local evidence, being in the center of the road and approximately midway between the end posts on each side of the road. The spike was in line with the post to the south and slightly west of the post to the north. The railroad spike was removed during excavation, but the position of the railroad spike as found prior to excavation was held as marking the corner. A harrison monument was set in this position. This corner was originally established as a wood post in 1821.



*Kenneth E. Hedge*  
 Kenneth E. Hedge, County Surveyor

*James S. Swift*  
 James S. Swift, IN LS 20200054

February 5, 2014

Marion Township



# SECTION CORNER RECORD

NE 700-1100

## BOONE COUNTY SURVEYOR'S OFFICE

State Plane grid coordinates NAD83 (CORS96):

North: 1784130.04 East: 3182640.01 (U.S. survey feet)

Type of monument: Harrison, 4" disk 'Section Corner'

Depth: six inches below adjacent gravel road surface

Indiana tie card references:

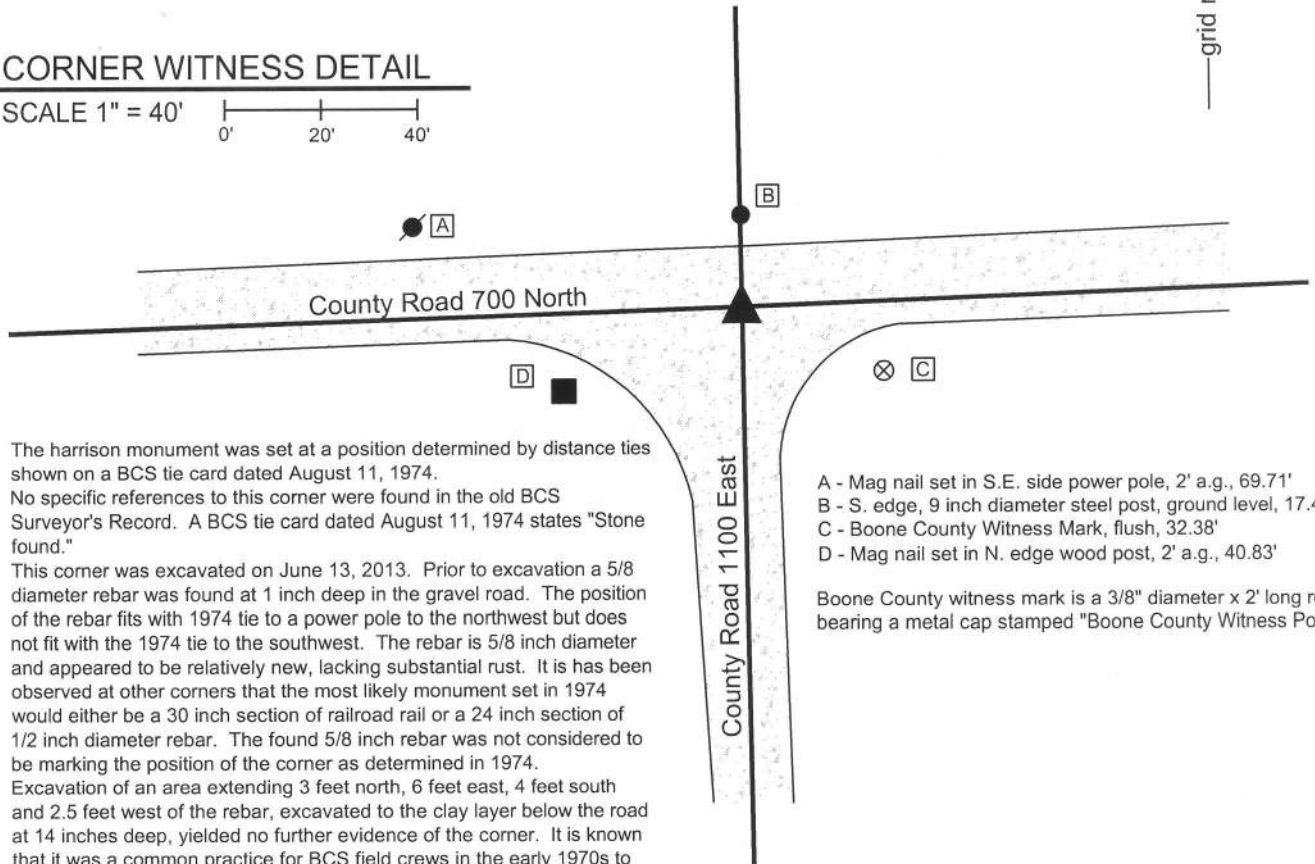
IN02\_T20NR2E26\_80 IN02\_T20NR2E25\_72

IN02\_T20NR2E35\_08 IN02\_T20NR2E36\_00



### CORNER WITNESS DETAIL

SCALE 1" = 40'



The harrison monument was set at a position determined by distance ties shown on a BCS tie card dated August 11, 1974.

No specific references to this corner were found in the old BCS Surveyor's Record. A BCS tie card dated August 11, 1974 states "Stone found."

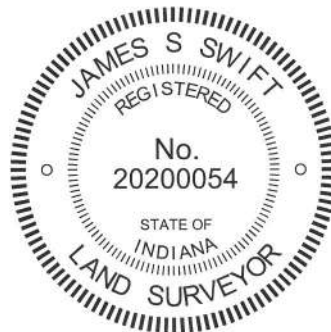
This corner was excavated on June 13, 2013. Prior to excavation a 5/8 diameter rebar was found at 1 inch deep in the gravel road. The position of the rebar fits with 1974 tie to a power pole to the northwest but does not fit with the 1974 tie to the southwest. The rebar is 5/8 inch diameter and appeared to be relatively new, lacking substantial rust. It is has been observed at other corners that the most likely monument set in 1974 would either be a 30 inch section of railroad rail or a 24 inch section of 1/2 inch diameter rebar. The found 5/8 inch rebar was not considered to be marking the position of the corner as determined in 1974.

Excavation of an area extending 3 feet north, 6 feet east, 4 feet south and 2.5 feet west of the rebar, excavated to the clay layer below the road at 14 inches deep, yielded no further evidence of the corner. It is known that it was a common practice for BCS field crews in the early 1970s to remove stones, if found, and replace them with either a railroad rail of a 1/2 inch diameter rebar. It is reasonable to expect that the stone found in 1974 was removed and also reasonable to expect that the monument set in its place may have been removed by a road grader at some point in the intervening 39 years. The position of the corner determined in 1974 was reconstructed using the two distance remaining distance ties, holding the southeast edge of the power pole and the northeast corner of the wood post, as graphically demonstrated on the 1974 tie card. A harrison monument was set at this position. The 5/8 inch diameter rebar, removed during excavation, had been 1 foot north and 2 feet east of this position.

This corner was originally established as a wood post in 1821.

- A - Mag nail set in S.E. side power pole, 2' a.g., 69.71'
- B - S. edge, 9 inch diameter steel post, ground level, 17.43'
- C - Boone County Witness Mark, flush, 32.38'
- D - Mag nail set in N. edge wood post, 2' a.g., 40.83'

Boone County witness mark is a 3/8" diameter x 2' long rebar bearing a metal cap stamped "Boone County Witness Point."



Marion Township

Section 26 T20N, R2E	Section 25 T20N, R2E
Section 35 T20N, R2E	Section 36 T20N, R2E

Kenneth E. Hedge, County Surveyor

James S. Swift, IN LS 20200054

February 5, 2015

# SECTION CORNER RECORD

NE 750-1000

## BOONE COUNTY SURVEYOR'S OFFICE

State Plane grid coordinates NAD83 (CORS96):

North: 1786612.80 East: 3177274.81 (U.S. survey feet)

Type of monument: Harrison, 4" disk 'Section Corner'

Depth: One inch below adjacent road surface

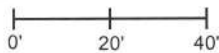
Indiana tie card references:

IN02\_T20NR2E27\_44

IN02\_T20NR2E26\_36

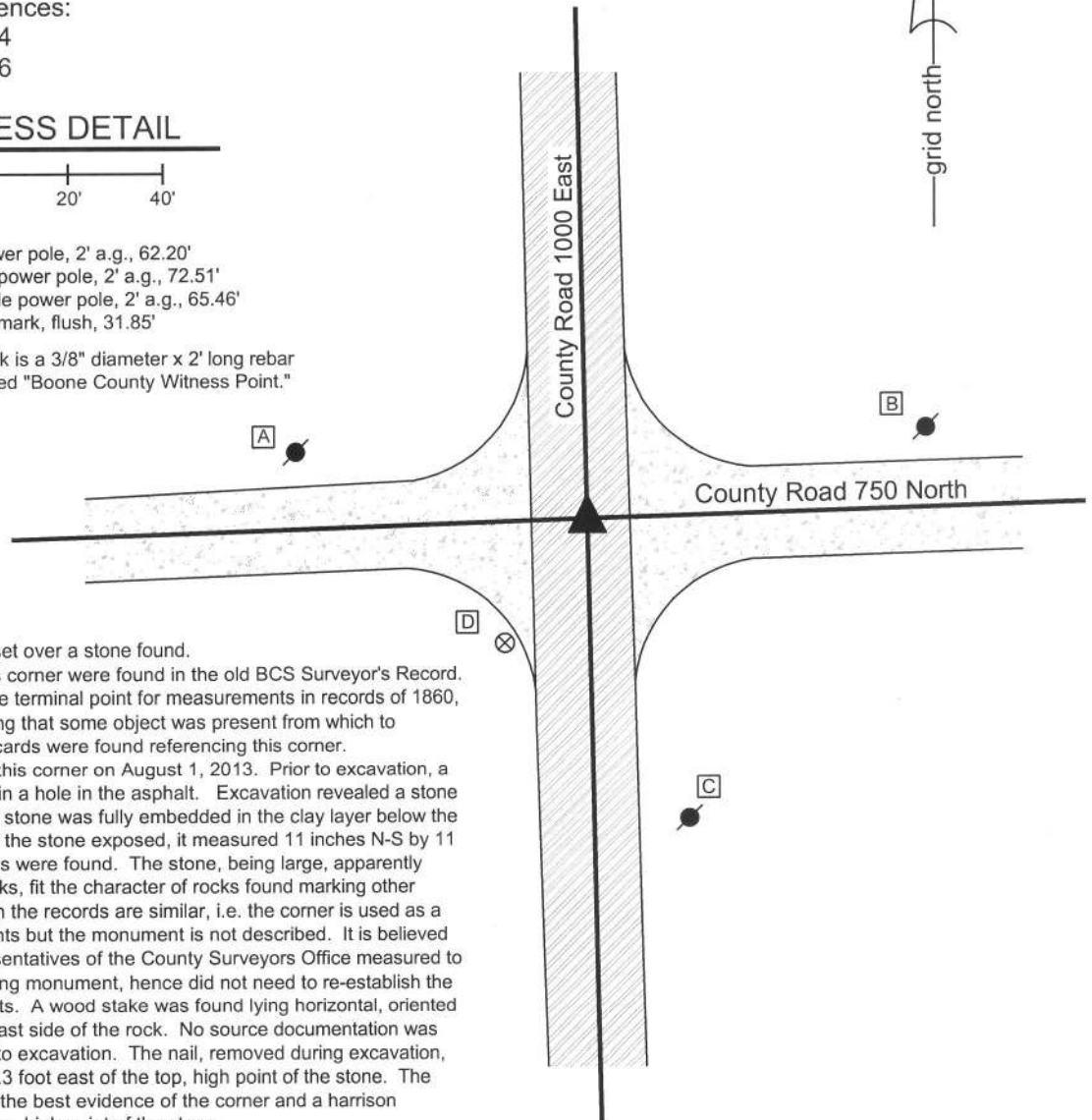
### CORNER WITNESS DETAIL

SCALE 1" = 40'



- A - Mag nail set in S.E. power pole, 2' a.g., 62.20'
- B - Mag nail set in W. side power pole, 2' a.g., 72.51'
- C - Mag nail set in N.W. side power pole, 2' a.g., 65.46'
- D - Boone County witness mark, flush, 31.85'

Boone County witness mark is a 3/8" diameter x 2' long rebar bearing a metal cap stamped "Boone County Witness Point."

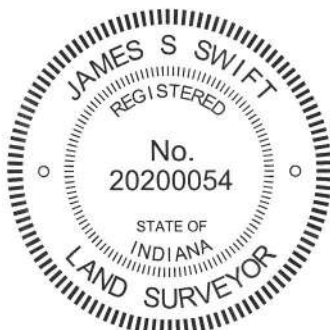


The harrison monument was set over a stone found.

No specific descriptions of this corner were found in the old BCS Surveyor's Record. The corner is mentioned as the terminal point for measurements in records of 1860, 1869, 1874 and 1912, indicating that some object was present from which to measure. No recent BCS tie cards were found referencing this corner.

Excavation was performed at this corner on August 1, 2013. Prior to excavation, a nail was found at 1 inch deep in a hole in the asphalt. Excavation revealed a stone found at 30 inches deep. The stone was fully embedded in the clay layer below the road. With the top 6 inches of the stone exposed, it measured 11 inches N-S by 11 inches E-W. No specific marks were found. The stone, being large, apparently horizontal and bearing no marks, fit the character of rocks found marking other corners in the county for which the records are similar, i.e. the corner is used as a terminal point for measurements but the monument is not described. It is believed that in these situations, representatives of the County Surveyors Office measured to the corner and found an existing monument, hence did not need to re-establish the corner and set new monuments. A wood stake was found lying horizontal, oriented in a N-S direction, along the east side of the rock. No source documentation was found for the nail visible prior to excavation. The nail, removed during excavation, had been 0.7 foot north and 0.3 foot east of the top, high point of the stone. The found stone was accepted as the best evidence of the corner and a harrison monument was set over the top, high point of the stone.

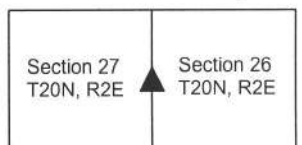
This corner was originally established as a wood post in 1821.



*Kenneth E. Hedge*  
 \_\_\_\_\_  
 Kenneth E. Hedge, County Surveyor

*James S. Swift*  
 \_\_\_\_\_  
 James S. Swift, IN LS 20200054  
 February 5, 2015

Marion Township



PHOTOGRAPHIC DOCUMENTATION

Date of photography: August 1, 2013

The piece of wood found below the nail and above the stone.



View of the stone and the wood stake.



The stone from above.



View from above the stone, looking south along County Road 1000 East.



View from above the stone, looking west along County Road 750 North.



View from above the stone, looking north along County Road 1000 East.



For details and documentation, refer to related sheet "Section Corner Record."

# SECTION CORNER RECORD

NE 750-1100

## BOONE COUNTY SURVEYOR'S OFFICE

State Plane grid coordinates NAD83 (CORS96):

North: 1786773.27 East: 3182589.53 (U.S. survey feet)

Type of monument: Harrison, 4" disk 'Section Corner'

Depth: six inches below adjacent gravel road surface

Indiana tie card references:

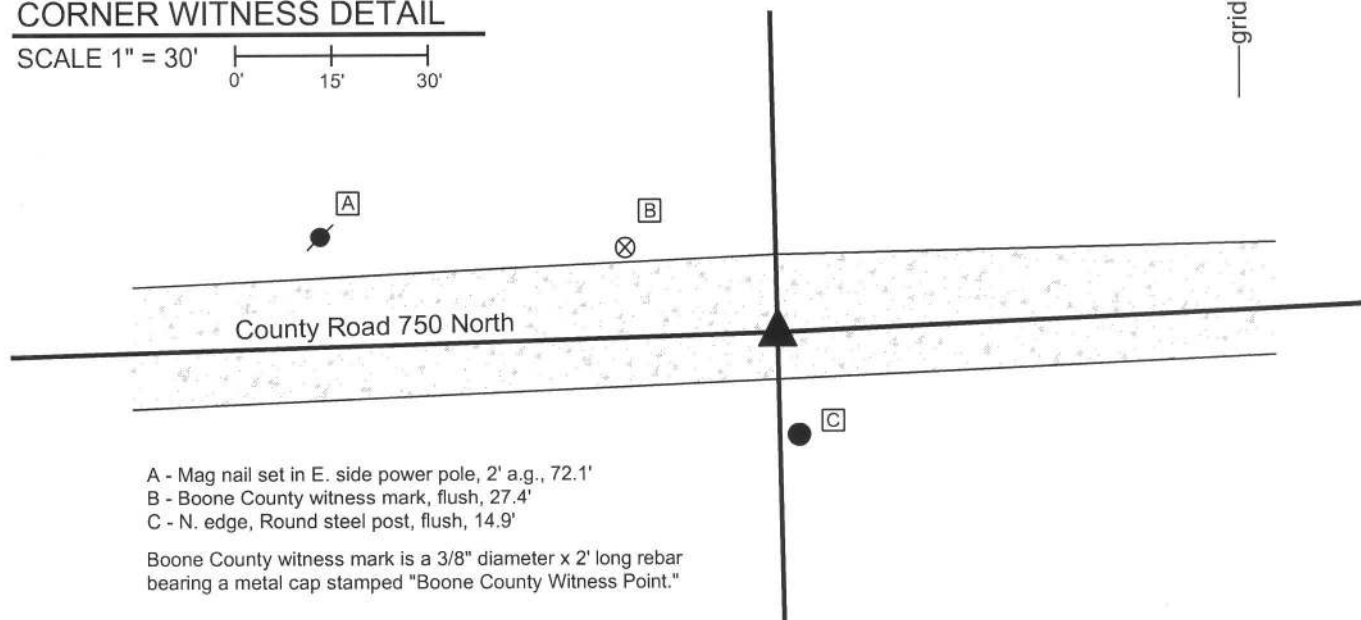
IN02\_T20NR2E25\_36

IN02\_T20NR2E26\_44



### CORNER WITNESS DETAIL

SCALE 1" = 30'



- A - Mag nail set in E. side power pole, 2' a.g., 72.1'
- B - Boone County witness mark, flush, 27.4'
- C - N. edge, Round steel post, flush, 14.9'

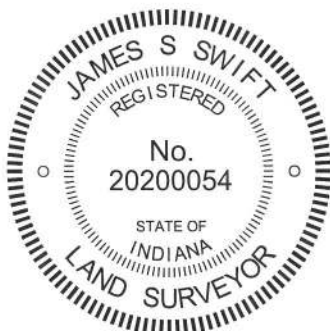
Boone County witness mark is a 3/8" diameter x 2' long rebar bearing a metal cap stamped "Boone County Witness Point."

The harrison monument was set in place of a stone found.

No specific descriptions of this corner were found in the old BCS Surveyor's Record, though the corner is mentioned as the terminal point for measurements in records of 1851, 1860, 1869 and 1912, indicating that some object was present from which to measure. A BCS tie card dated August 20, 1974 states "no stone found" and shows the corner at the midpoint between the end posts on the north and south sides of the road. A BCS tie card dated September 1, 1995 shows the corner as a 5/8 inch rebar in line with a steel post on the south side of the road.

This corner was excavated on September 18, 2013. Prior to excavation, a 5/8 inch diameter rebar with a red plastic cap (markings illegible) was found at 2 inches deep in the gravel road. Excavation revealed a stone found at 2 inches deep, west of the rebar. The stone had a flat top, approximately 10 inches by 10 inches which appeared to have been repeatedly scraped by road grading equipment. The stone was removed and found to be 17 inches tall by 12 inches N-S by 14 inches E-W, of a blue speckled granite composition. The cross section of the road bed at this corner was found to be 3 to 4 inches of gravel over clay. Hence the stone had been well embedded in the clay layer, protruding 2 to 3 inches into the bottom the the road bed, which is a typical depth for stones relative to the bottom of the road bed. In this particular case, this depth placed the top of the stone nearly flush with the surface of the road. The stone was 3 feet west of the iron post on the south side of the road. The stone was accepted as the best evidence of the corner. The position of the center of the top of the stone prior to removal was held as marking the corner and a harrison monument was set in that position. The rebar, removed during excavation, had been 2.7' East and 1.4 feet north of the stone.

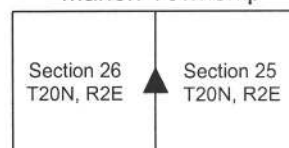
This corner was originally established as a wood post in 1821.



Kenneth E. Hedge, County Surveyor

James S. Swift, IN LS 20200054  
February 5, 2015

Marion Township



PHOTOGRAPHIC DOCUMENTATION

Date of photography: September 18, 2013

View of the stone as first exposed.



View of the stone, washed, from above and west.



The stone after being removed from the road.



For details and documentation, refer to related sheet "Section Corner Record."

View from the north, showing the stone and the round steel post on the south side of the road.



View from the east, looking across the stone and west along County Road 750 North.





# SECTION CORNER RECORD

## BOONE COUNTY SURVEYOR'S OFFICE

NE 800-1000

State Plane grid coordinates NAD83 (CORS96):

North: 1789257.70 East: 3177223.13 (U.S. survey feet)

Type of monument: Harrison, 4" disk 'Section Corner'

Depth: One inch below adjacent road surface

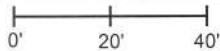
Indiana tie card references:

IN02\_T20NR2E22\_80 IN02\_T20NR2E23\_72

IN02\_T20NR2E27\_08 IN02\_T20NR2E26\_00

### CORNER WITNESS DETAIL

SCALE 1" = 40'



A - Mag nail set in S.W. side power pole, 2' a.g., 92.7'

B - Boone County witness mark, flush, 16.25'

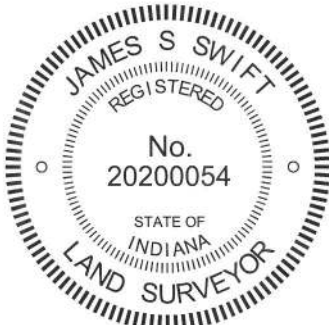
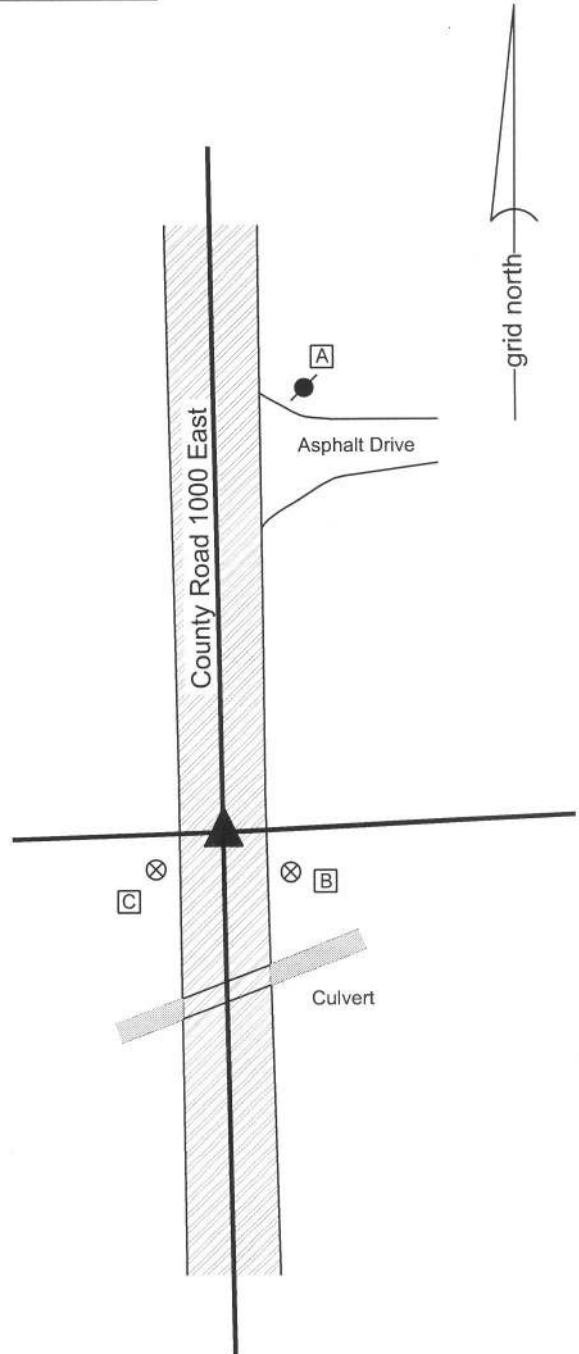
C - Boone County witness mark, flush, 15.9'

Boone County witness mark is a 3/8" diameter x 2' long rebar bearing a metal cap stamped "Boone County Witness Point."

The harrison monument was set over a stone found.

A BCS record of October 9-10, 1879 states "Reest. by running from D South 80.09 to 1/4 sec. corner between secs 26 & 27. Set two Rocks lower one 9.18.10 in + on top side. Upper one 21.4.10 in + on top." No recent BCS tie cards were found referencing this corner.

Excavation was performed at this corner on October 15, 2013. Prior to excavation, a 1/2 inch diameter rebar was found at 4 inches deep in a hole in the asphalt. Excavation revealed fragments of a wood stake found at 24 inches deep, south of the rebar. Further excavation revealed a stone found at 31 inches deep. The stone was fully embedded in the clay layer below the road bed. At most corners, the corner stones are found to be embedded in the clay layer with the top of the stone either at the top of the clay layer or protruding a few inches into the base of the road bed. At this corner the stone was approximately 1 foot deep in the clay layer. This is not typical but may be explained by the fact that the corner is immediately north of and adjacent to an open ditch. Early dredging of the ditch before the road bed was fully established could have resulted in substantial amounts of clay placed above the stone. It is notable that the clay layer begins at 18 inches from the surface of the road, which elevation is actually higher than the surrounding ground. The top 5 inches of the stone were exposed, at which point it measured approximately 9 inches N-S by 5 inches E-W. A distinct etched "+" mark was visible on the east side of the stone, 2 inches from the top. Probing indicated that another stone was situated directly below the exposed stone, at approximately 2 feet from the top of the top stone. With the etched mark and the dimensions approximating those described in the 1879 record, the stone was accepted as marking the corner. A harrison monument was set directly above the top, center of the stone, in line with the etched "+" mark on the east side. The rebar, removed during excavation, had been one foot north of the stone. This corner was originally established as a wood post in 1821.



*Kenneth E. Hedge*  
Kenneth E. Hedge, County Surveyor

*James S. Swift*  
James S. Swift, IN LS 20200054  
February 5, 2015

Marion Township

Section 22 T20N, R2E	Section 23 T20N, R2E
Section 27 T20N, R2E	Section 26 T20N, R2E

PHOTOGRAPHIC DOCUMENTATION

Date of photography: October 15, 2013

View of the stone from above and west.



Close up of the stone, showing the etched mark on the west side.



View of the stone from above and north.



View from above the stone, looking north along County Road 1000 East.



For details and documentation, refer to related sheet "Section Corner Record."

# SECTION CORNER RECORD

NE 800-1100

## BOONE COUNTY SURVEYOR'S OFFICE

State Plane grid coordinates NAD83 (2011):

North: 1789418.53 East: 3182534.38 (U.S. survey feet)

Type of monument: Harrison, 4" disk 'Section Corner'

Depth: Three inches above adjacent ground

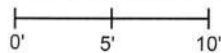
Indiana tie card references:

IN02\_T20NR2E23\_80 IN02\_T20NR2E24\_72

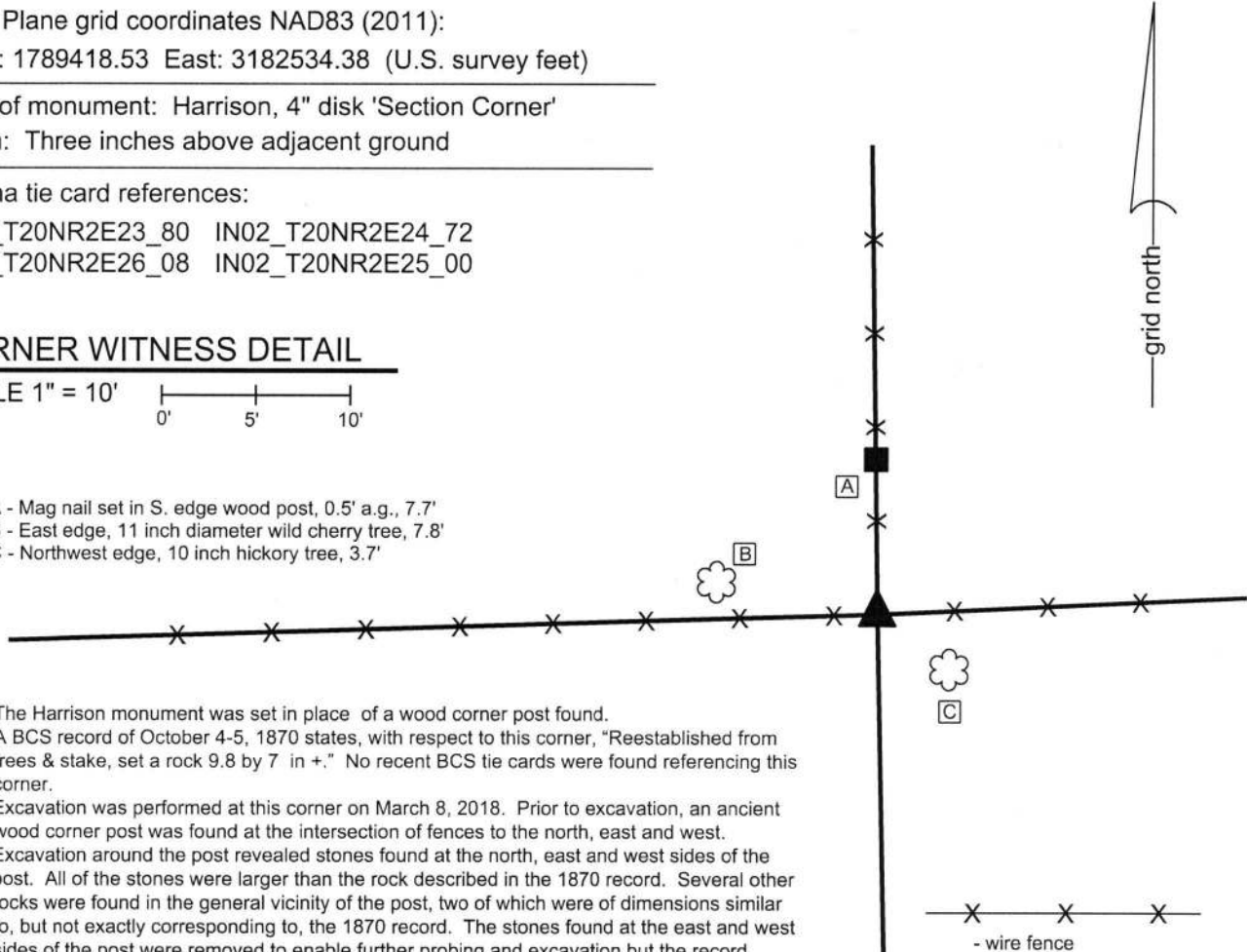
IN02\_T20NR2E26\_08 IN02\_T20NR2E25\_00

### CORNER WITNESS DETAIL

SCALE 1" = 10'

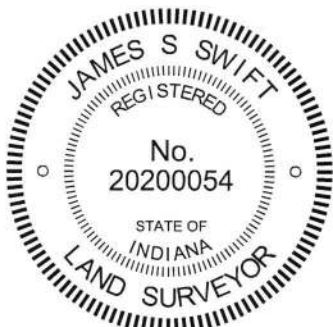


- A - Mag nail set in S. edge wood post, 0.5' a.g., 7.7'
- B - East edge, 11 inch diameter wild cherry tree, 7.8'
- C - Northwest edge, 10 inch hickory tree, 3.7'



The Harrison monument was set in place of a wood corner post found. A BCS record of October 4-5, 1870 states, with respect to this corner, "Reestablished from trees & stake, set a rock 9.8 by 7 in +." No recent BCS tie cards were found referencing this corner.

Excavation was performed at this corner on March 8, 2018. Prior to excavation, an ancient wood corner post was found at the intersection of fences to the north, east and west. Excavation around the post revealed stones found at the north, east and west sides of the post. All of the stones were larger than the rock described in the 1870 record. Several other rocks were found in the general vicinity of the post, two of which were of dimensions similar to, but not exactly corresponding to, the 1870 record. The stones found at the east and west sides of the post were removed to enable further probing and excavation but the record stone was not found. The stone at the north edge of the post was found to be at least 18 inches tall by 18 inches E-W by 12 inches N-S. The south edge of the stone was vertical. The stone appeared to be acting more as a substantial brace for the post than as a cornerstone. With no stones found which could be positively identified as marking the corner, the actual corner post was accepted as marking the corner. The position of the post fits well with the relative positions of proximate corners and represents the best available evidence of the corner. The post, as found, was rotted off at ground level and was suspended vertically as supported by the attached wire and wood braces. For the purposes of establishing a monument, the west brace was removed, the E-W wire on the south side of the post was detached, and the post was shifted approximately 1 foot to the east. The post was left standing vertically, as supported by the wood brace and wire fence to the north. A Harrison monument was set in the position of the center of the post, as originally found. The subterranean concrete portion of the monument is anchored to the substantial rock with the vertical south edge immediately to the north of the corner.



*Kenneth E. Hedge*  
 Kenneth E. Hedge, County Surveyor

*James S. Swift*  
 James S. Swift, IN LS 20200054  
 March 14, 2018

Marion Township

Section 23 T20N, R2E	Section 24 T20N, R2E
Section 26 T20N, R2E	Section 25 T20N, R2E