

# SECTION CORNER RECORD

NE 100-1000

## BOONE COUNTY SURVEYOR'S OFFICE

State Plane grid coordinates NAD83 (NSRS 2007):

North: 1751938.83 East: 3177774.44 (U.S. survey feet)

Type of monument: Harrison, 4" disk 'Section Corner'

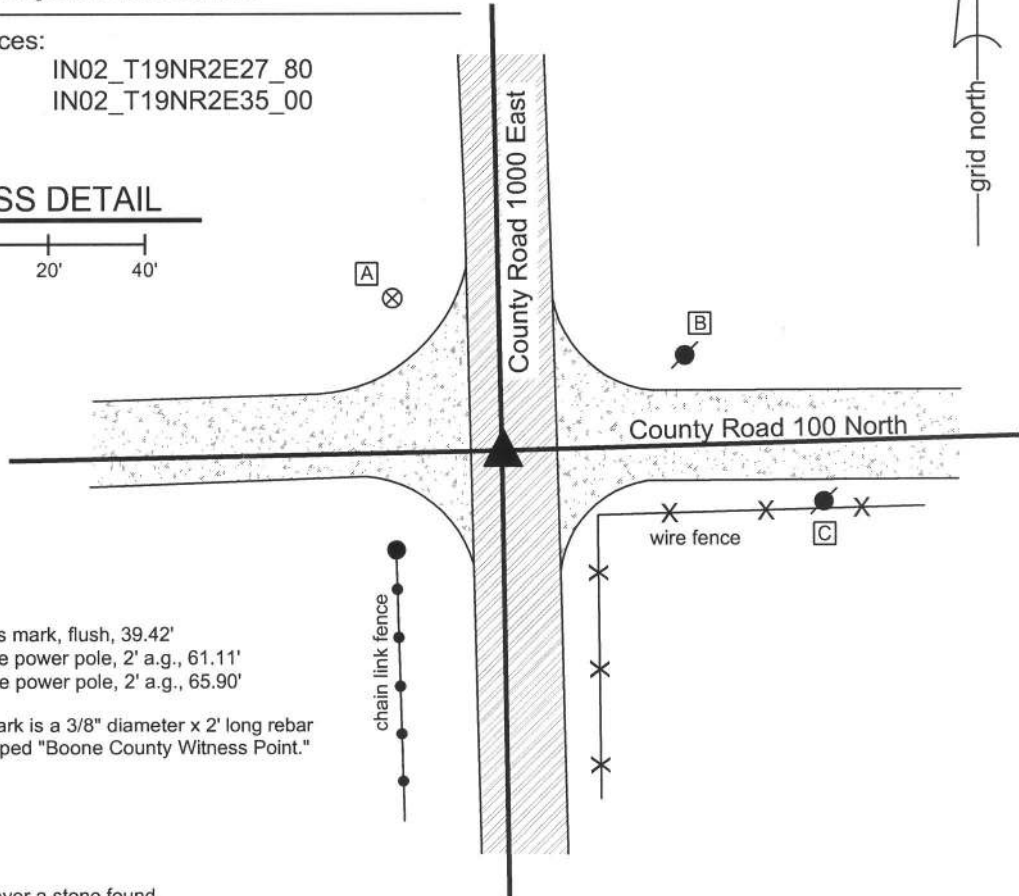
Depth: One inch below adjacent road surface

Indiana tie card references:

IN02\_T19NR2E26\_72      IN02\_T19NR2E27\_80  
 IN02\_T19NR2E34\_08      IN02\_T19NR2E35\_00

### CORNER WITNESS DETAIL

SCALE 1" = 40'



- A - Boone County witness mark, flush, 39.42'
- B - Mag nail set in W. side power pole, 2' a.g., 61.11'
- C - Mag nail set in W. side power pole, 2' a.g., 65.90'

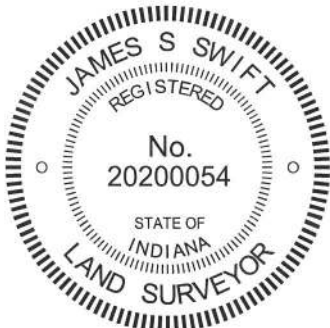
Boone County witness mark is a 3/8" diameter x 2' long rebar bearing a metal cap stamped "Boone County Witness Point."

The harrison monument was set over a stone found.

A BCS tie card dated August 6, 1974 states "No stone found." No specific descriptions of this corner were found in the old BCS Surveyor's Record, beyond the original establishment of the corner as a wood post by federal surveyors.

This corner was excavated on June 17, 2010. Prior to excavation, a rebar was visible at the surface. Excavation revealed a piece of railroad rail on end at 6 inches deep, adjacent to the rebar. The rebar was situated along the east side of the rail. Further excavation revealed a large stone found at 33 inches deep. The stone is 17 inches N-S by 26 inches E-W and was measured to be 22 inches tall at the N. side. The stone is embedded in the clay layer below the road bed, with the top of the stone protruding approximately 3 inches into the bottom of the road bed. The characteristics of this stone, including the depth, being embedded in the clay, the orientation aligned with cardinal directions and the position at the intersection of the two county roads are all consistent with other corner stones found. The fact that the stone is neither vertical nor has any specific identifiable markings is consistent with the fact that it is not mentioned in the BCS Surveyor's Record, as typically only the stones which can be positively identified as being set by County Surveyors are set vertically with markings, while the remaining cornerstones, including those found and held by the old County Surveyors, tend to have the same characteristics as the stone found at this corner. The harrison monument was set directly over the top, center of the stone. The rebar and rail, both removed during excavation, were 3.3 feet north and 0.3 and 0.2 feet east, respectively of the harrison. The 1974 reference to "no stone" indicates that a stone was searched for but not found. It is most likely that the railroad rail was set at that time, after the erroneous determination that other evidence, in the form of a stone, was not present.

This corner was originally established as a wood post 1821.



*Kenneth E. Hedge*  
 Kenneth E. Hedge, County Surveyor

*James S. Swift*  
 James S. Swift, IN LS 20200054  
 July 25, 2011

Union Township

Section 27 T19N, R2E	Section 26 T19N, R2E
Section 34 T19N, R2E	Section 35 T19N, R2E

PHOTOGRAPHIC DOCUMENTATION

Date of photography: June 17, 2010

View of the stone from the north.



The stone being exposed. View from above.



The stone exposed. View from above.



View from above the stone, looking east along County Road 100 North.



View from above the stone, looking south along County Road 1000 East.



For details and documentation, refer to related sheet "Section Corner Record."

# SECTION CORNER RECORD

NE 100-1050

## BOONE COUNTY SURVEYOR'S OFFICE

State Plane grid coordinates NAD83 (NSRS 2007):  
North: 1752014.74 East: 3180426.28 (U.S. survey feet)

Type of monument: Harrison, 4" disk 'Section Corner'  
Depth: six inches below adjacent gravel road surface

Indiana tie card references:  
IN02\_T19NR2E26\_76  
IN02\_T19NR2E35\_04

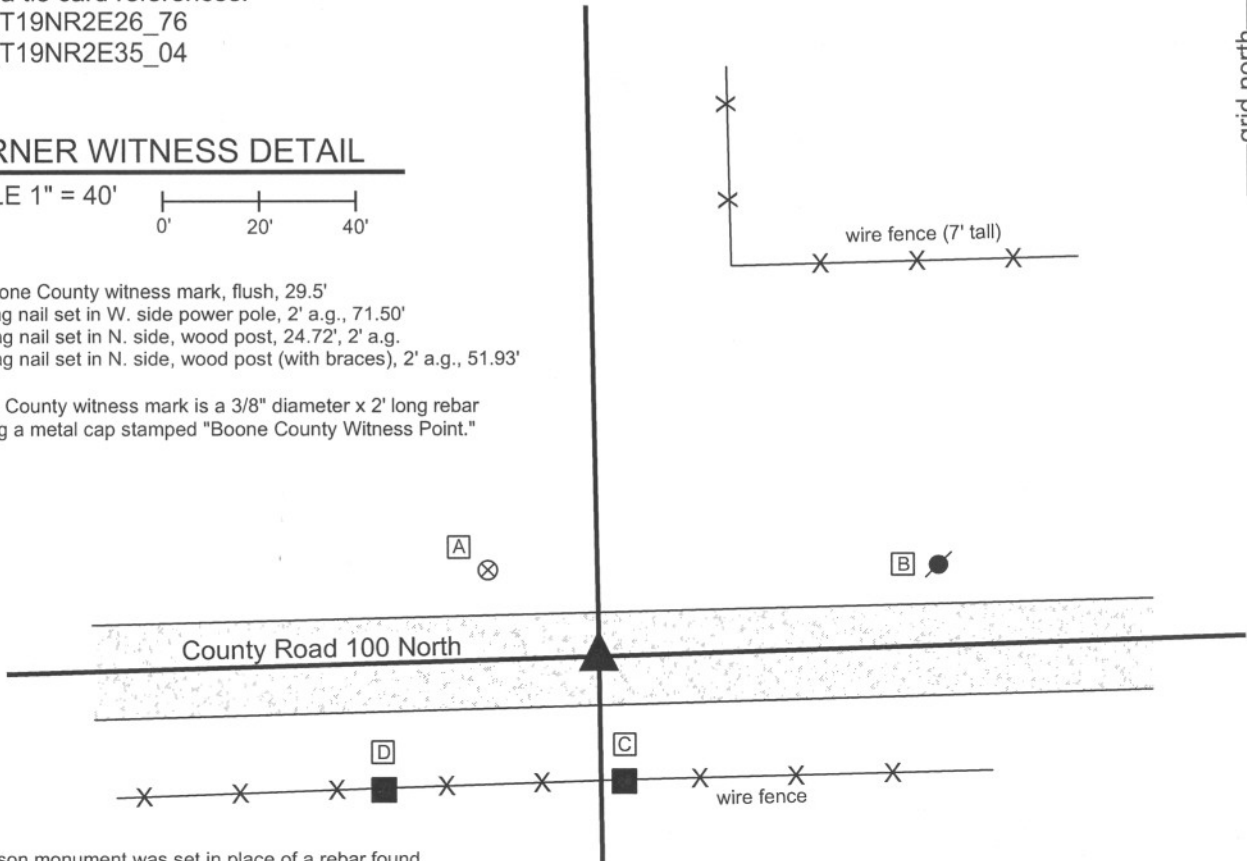
### CORNER WITNESS DETAIL

SCALE 1" = 40'



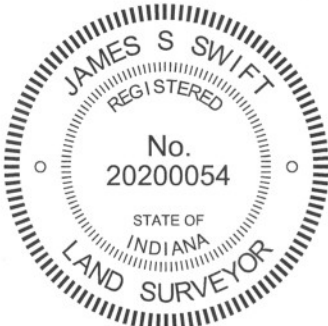
- A - Boone County witness mark, flush, 29.5'
- B - Mag nail set in W. side power pole, 2' a.g., 71.50'
- C - Mag nail set in N. side, wood post, 24.72', 2' a.g.
- D - Mag nail set in N. side, wood post (with braces), 2' a.g., 51.93'

Boone County witness mark is a 3/8" diameter x 2' long rebar bearing a metal cap stamped "Boone County Witness Point."



The harrison monument was set in place of a rebar found.

A BCS tie card dated August 6, 1974 states "stone found." No specific descriptions of this corner were found in the old BCS Surveyor's Record. This corner was excavated on August 18, 2010. Prior to excavation, a 5/8 inch diameter rebar with a red plastic cap (markings indistinguishable) was found near the midpoint of the line connecting the section corners to the east and west. Excavation of an area 12 feet east-west by 10 feet north-south, centered on the rebar, revealed no other evidence of the corner. It was observed that the roadbed in this area is only approximately 10 inches thick. The 1974 tie card does not state any information about what was done with the stone when it was found. It has been observed at other corners documented in 1974 that found stones must have been removed and replaced with a metal monument, being either a section of railroad rail set vertically or a piece of 1/2 inch diameter rebar. The source of the found 5/8 inch rebar is not known. It may be in the same position as the stone found in 1974, but proof of this has not been found. No local evidence of the corner was found in the vicinity of the corner, other than the east-west roadway, whereas the 1974 tie card shows the corner in-line with a fence to the north. Notably, the rebar was nearly equidistant between the stones found at the section corners to the east and west. However, the rebar was not equidistant between the rails which were believed to have been set in 1974 and the stones were only uncovered in 2010. Hence, while the rebar is close to the midpoint between recently found stones, it is not likely that the rebar was purposely set at a calculated midpoint position and may well represent the position of the stone found in 1974. Given the minimal depth of the road bed in this area, it is reasonable to expect that the stone, rail or 1/2 inch rebar may have been removed by a road grader. The position of the rebar was held as providing the best available evidence of the corner and the harrison monument was set at this position. This corner was originally established as a wood post in July, 1821.



*Kenneth E. Hedge*  
 Kenneth E. Hedge, County Surveyor

*James S. Swift*  
 James S. Swift, IN LS 20200054  
 July 25, 2011

Union Township

Section 26  
T19N, R2E

▲  
 Section 35  
 T19N, R2E

# SECTION CORNER RECORD

## BOONE COUNTY SURVEYOR'S OFFICE

NE 100-1100

State Plane grid coordinates NAD83 (NSRS 2007):

North: 1752095.57 East: 3183077.20 (U.S. survey feet)

Type of monument: Harrison, 4" disk 'Section Corner'

Depth: Six inches below adjacent gravel road surface.

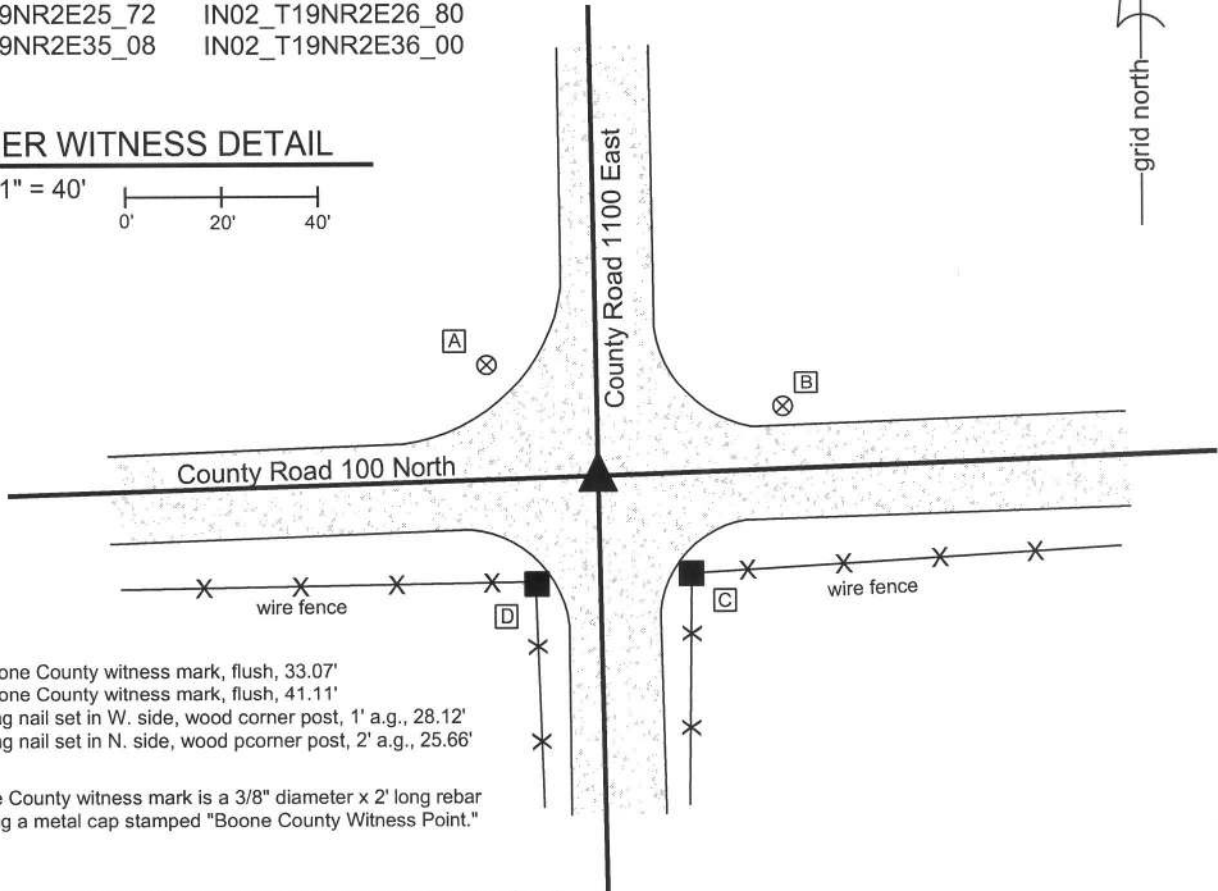
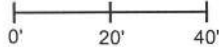
Indiana tie card references:

IN02\_T19NR2E25\_72 IN02\_T19NR2E26\_80

IN02\_T19NR2E35\_08 IN02\_T19NR2E36\_00

### CORNER WITNESS DETAIL

SCALE 1" = 40'



- A - Boone County witness mark, flush, 33.07'
- B - Boone County witness mark, flush, 41.11'
- C - Mag nail set in W. side, wood corner post, 1' a.g., 28.12'
- D - Mag nail set in N. side, wood pcorner post, 2' a.g., 25.66'

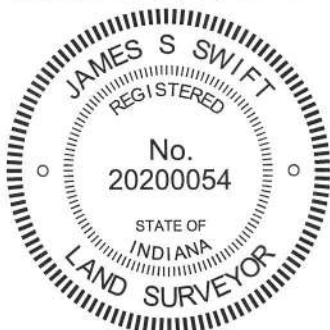
Boone County witness mark is a 3/8" diameter x 2' long rebar bearing a metal cap stamped "Boone County Witness Point."

The harrison monument was set directly over the etched "+" on a stone found.

A BCS record of October 24, 1866 states "Re-Established after having taken additional evidence. Set two Rocks, one 6.5.4 in + Mark on top. Top Rock 13.7.5 1/2 + on top." A BCS tie card dated August 7, 1974 states "No stone found."

This corner was excavated on June 18, 2010. Prior to excavation, a railroad rail was found at 4 inches deep. Excavation revealed a rock found at 24 inches deep, 1 foot west of the rail. The rock was 12 inches N-S by 10 inches E-W by 8 inches tall. A deep crease was visible on the top of the rock but did not appear to be an intentional mark. This stone did not match the description of either of the record stones and was removed. Further excavation revealed the record bottom stone found at 28 inches deep. This stone had a clearly visible etched "+" on the top. The stone matches the proportions of the record bottom stone, but was slightly larger in all dimensions. The top of the stone is approximately 10 inches deep into the clay layer below the road. A 13 inch tall stone above it would have protruded 3 inches into the bottom of the road bed, which is consistent with the depth of many other stones found. The stone was left in place and the harrison monument was set over the etched "+" on the top. The harrison is 0.9 foot north and 2.9 feet west of the position of the railroad rail, which was removed during excavation. The 1968 reference to "no stone found" indicates that a stone was searched for but not found. It is most likely that the railroad rail was set at that time, after the erroneous determination that other evidence, in the form of a stone, was not present.

This corner was originally established as a wood post in June, 1821.



*Kenneth E. Hedge*  
 Kenneth E. Hedge, County Surveyor

*James S. Swift*  
 James S. Swift, IN LS 20200054  
 July 25, 2011

Union Township

Section 26 T19N, R2E	Section 25 T19N, R2E
Section 35 T19N, R2E	Section 36 T19N, R2E

PHOTOGRAPHIC DOCUMENTATION

Date of photography: June 18, 2010

View of the stone from above.



Close-up of the stone.



For details and documentation, refer to related sheet "Section Corner Record."

# SECTION CORNER RECORD

NE 150-1000

## BOONE COUNTY SURVEYOR'S OFFICE

State Plane grid coordinates NAD83 (NSRS 2007):

North: 1754599.73 East: 3177722.87 (U.S. survey feet)

Type of monument: Harrison, 4" disk 'Section Corner'

Depth: One inch below adjacent road surface

Indiana tie card references:

IN02\_T19NR2E26\_44 IN02\_T19NR2E27\_36


The harrison monument was set in place of a bolt spike found. A BCS tie card dated August 6, 1974 states "stone found." No specific descriptions of this corner were found in the old BCS Surveyor's Record.

This corner was excavated on August 16, 2010. Prior to excavation the head of a bolt spike was visible at 5 inches deep, apparently bent. Excavation revealed that the spike is 16 inches long, square shafted (1/2 inch on each side), with a bolt like head. Most of the shaft was straight, vertical and apparently undisturbed while the top of the spike was bent. A 5x5 foot square, centered in all directions on the bolt spike, was excavated to a minimum depth of 2 feet deep, which extended well into the clay layer below the road and beyond the depth at which a cornerstone or other evidence might reasonably be expected to be found. The single firm distance tie from 1974 was not available. The position of the bolt spike does fit with the graphic representation of the corner as being at the center of the road and at the extension of the fence to the east. It is noted that the tie card also shows a fence to the west, but the field notes from which the tie card were made does not show a fence to the west. The 1939 aerial photo shows a clear line of occupation to the east on the north side of a lane. The current fence to the east appears to be built since 1974, but the location of the current fence fits with the photographic evidence from the 1939 photo. Hence, the position of the bolt spike fits with both the graphical representation on the tie card and the 1939 photographic evidence. The presence of a 16 inch bolt spike with no other monuments is not consistent with evidence found associated with other tie cards. It has been observed that the term "stone found" on other 1974 tie cards appears to represent that a stone was found, removed and replaced with a metal monument, either a railroad rail set on end or a 1/2 inch diameter rebar. Bolt headed spikes have not been found at other corners documented in 1974. The source of this bolt spike is not known. However, given the lack of any other physical evidence in the roadway and the fact that the bolt spike does fit the graphical evidence on the 1974 tie card and the photographic evidence of the 1939 aerial photo, the bolt spike was accepted as representing the perpetuation of the position of whatever monument was set in 1974 and was held as the best available evidence of the position of the stone found in 1974 and the best available evidence of the corner. A harrison monument was set in the position of the straight, vertical portion of the shaft of the bolt spike.

It is also noted that this corner is approximately 2 feet west and 12 feet north of the midpoint between the corners to the north and south. The evidence of distances to remote corners is not considered superior to the local evidence of the bolt spike, which is supported by evidence of the stone found in 1974 and the photographic evidence of the 1939 aerial photo.

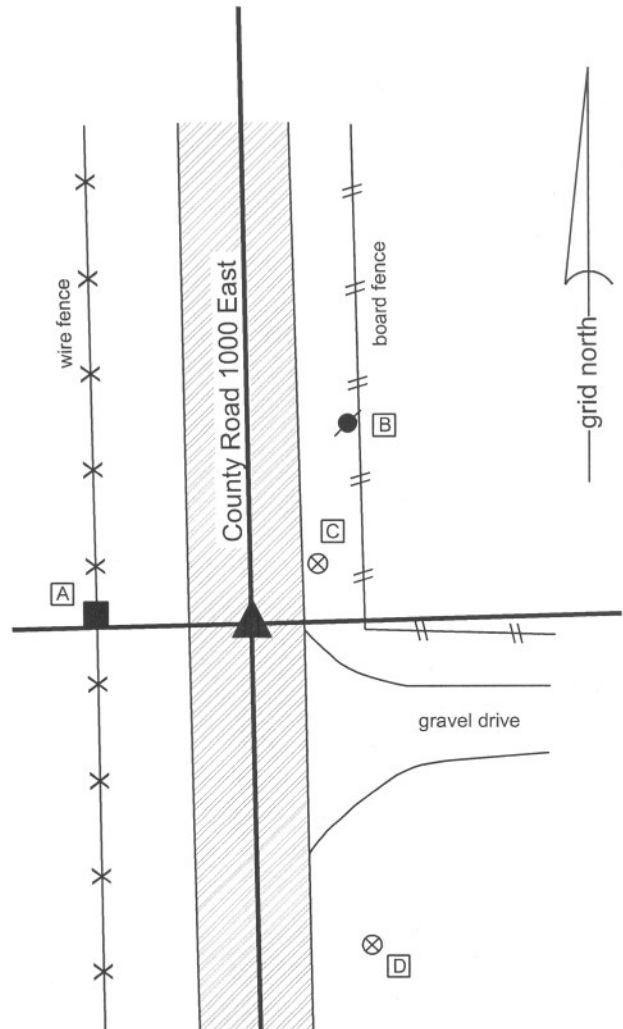
This corner was originally established as a wood post in July, 1821.

### CORNER WITNESS DETAIL

SCALE 1" = 30' 

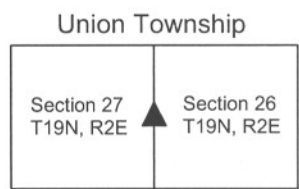
- A - Mag nail set in E. side wood post, 2' a.g., 24.13'
- B - Mag nail set in S. side power pole, 2' a.g., 33.76'
- C - Boone County witness mark, flush, 14.01'
- D - Boone County witness mark, flush, 53.54'

Boone County witness mark is a 3/8" diameter x 2' long rebar bearing a metal cap stamped "Boone County Witness Point."



*Kenneth E. Hedge*  
 Kenneth E. Hedge, County Surveyor

*James S. Swift*  
 James S. Swift, IN LS 20200054  
 July 25, 2011



# SECTION CORNER RECORD

# NE 150-1100

## BOONE COUNTY SURVEYOR'S OFFICE

State Plane grid coordinates NAD83 (NSRS 2007):

North: 1754739.35 East: 3183033.25 (U.S. survey feet)

Type of monument: Harrison, 4" disk 'Section Corner'

Depth: six inches below adjacent gravel road surface

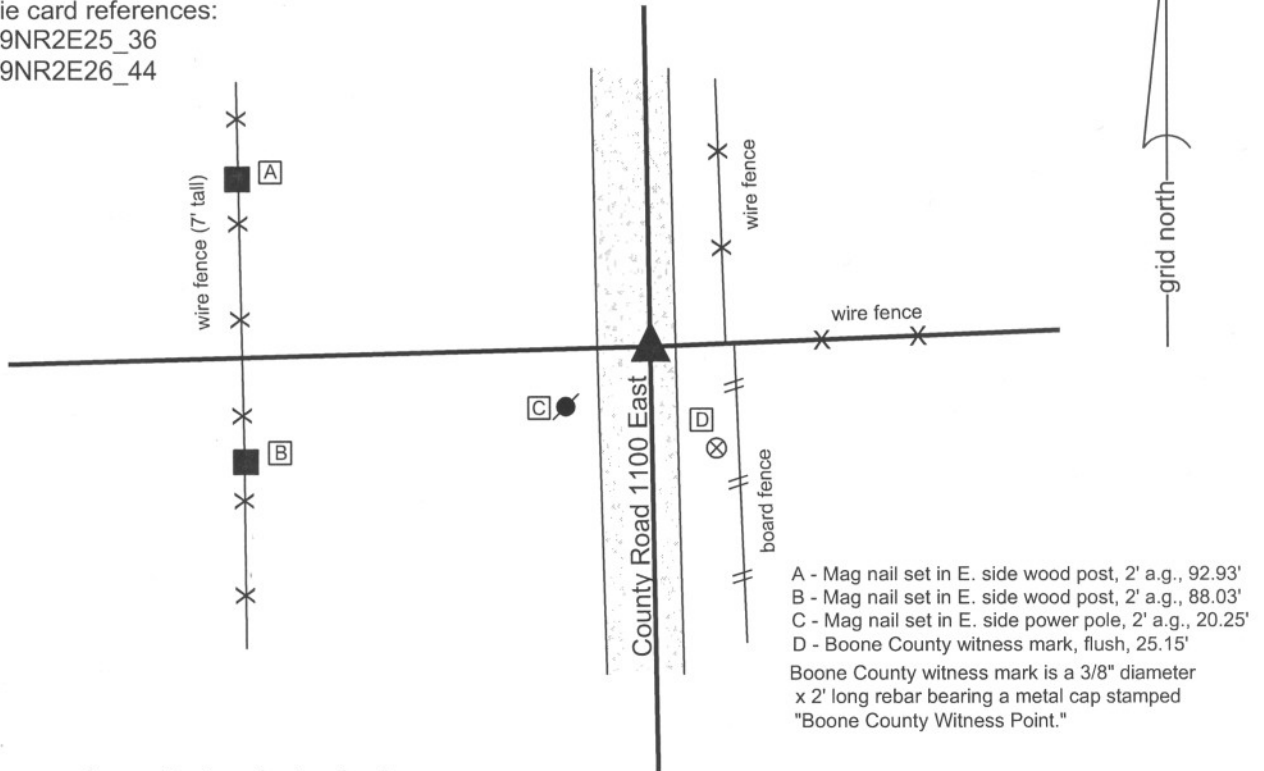
Indiana tie card references:

IN02\_T19NR2E25\_36

IN02\_T19NR2E26\_44

### CORNER WITNESS DETAIL

SCALE 1" = 40'

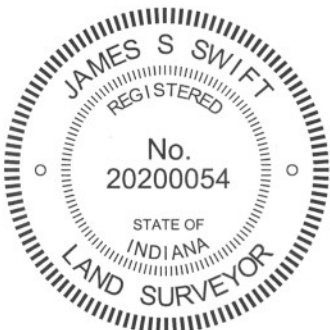


- A - Mag nail set in E. side wood post, 2' a.g., 92.93'
  - B - Mag nail set in E. side wood post, 2' a.g., 88.03'
  - C - Mag nail set in E. side power pole, 2' a.g., 20.25'
  - D - Boone County witness mark, flush, 25.15'
- Boone County witness mark is a 3/8" diameter x 2' long rebar bearing a metal cap stamped "Boone County Witness Point."

The harrison monument was set in place of a stone found.

A BCS record of April 22, 1863 states "Reestablished set two Rock. One 8.7.5 in marked +. Top rock 14.9.5 in marked 1/4 S." A BCS tie card dated August 7, 1974 states "stone found." This corner was excavated on August 16, 2010. Prior to excavation a rebar was found at 9 inches deep. Excavation revealed a railroad spike found at approximately 11 inches deep on the northeast edge of the rebar. Further excavation revealed the record stone found at approximately 16 inches deep, directly below the rebar and railroad spike. The stone measured 9 inches N-S, 5 inches E-W by 14 inches tall. The stone had a clearly visible "+" etched on the top high point, near the south edge. The stone also had the marking "1/4 S" etched on the west side, and was fully embedded in the clay layer below the road. The stone was removed and another stone was found below it. The lower stone was not disturbed and was not measured. The position of the record stones fit with the distance tie to a telephone cable pole shown on the 1974 tie card. The harrison monument was set over the lower stone, in place of the upper stone, at the specific position of the etched "+" and high point of the upper stone. It is noted that at most corners documented in 1974 with the statement "stone found" it has been discovered that the stone was removed and replaced with a metal monument. This corner appears to be an exception to that practice from that year as the record stone was left in place.. Another stone was also found approximately 14 inches east of the record stone. This stone was at approximately 7 inches below grade, measuring 11 inches tall by 6 by 8 inches. This stone was mostly in the material of the road bed, with only the bottom few inches in the clay layer. The stone did have a clearly visible "+" etched on the top and had been painted pink, indicating that it has been found recently by a field surveyor. Although this stone had a visible mark, it was not embedded in the clay layer below the road, as is typical of an ancient cornerstone. Given the presence of the record stone from 1863, the easterly stone was removed.

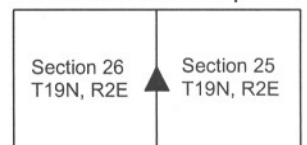
This corner was originally established as a wood post in June or July, 1821.



*Kenneth E. Hedge*  
 Kenneth E. Hedge, County Surveyor

*James S. Swift*  
 James S. Swift, IN LS 20200054  
 July 25, 2011

Union Township



# SECTION CORNER RECORD

# NE-200-1000

## BOONE COUNTY SURVEYOR'S OFFICE

State Plane grid coordinates NAD83 (NSRS 2007):

North: 1757236.74 East: 3177675.57 (U.S. survey feet)

Type of monument: Harrison, 4" disk 'Section Corner'

Depth: One inch below adjacent road surface

Indiana tie card references:

IN02\_T19NR2E22\_80

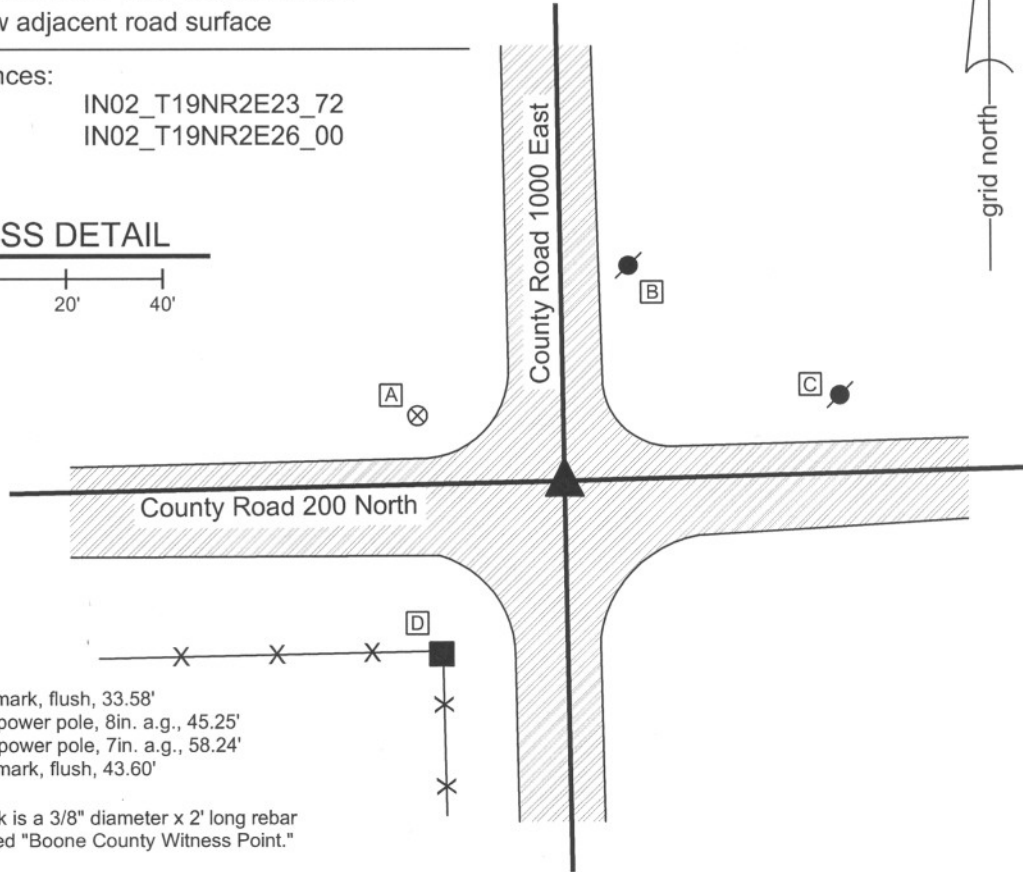
IN02\_T19NR2E23\_72

IN02\_T19NR2E27\_08

IN02\_T19NR2E26\_00

### CORNER WITNESS DETAIL

SCALE 1" = 40'



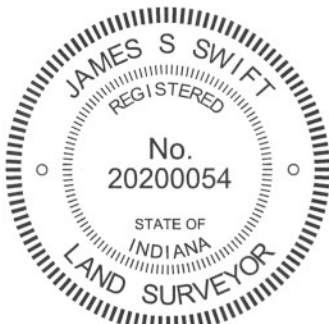
- A - Boone County witness mark, flush, 33.58'
- B - Nail found in S.W. side power pole, 8in. a.g., 45.25'
- C - Nail found in S.W. side power pole, 7in. a.g., 58.24'
- D - Boone County witness mark, flush, 43.60'

Boone County witness mark is a 3/8" diameter x 2' long rebar bearing a metal cap stamped "Boone County Witness Point."

The harrison monument was set in place of a rebar found.

A BCS tie card dated July 11, 1974 states "found stone 16" deep w/ PK nail." No specific descriptions of this corner were found in the old BCS Surveyor's Record.

This corner was excavated on July 8, 2010. Prior to excavation, a mag nail was visible at the surface. Excavation revealed four additional monuments in three separate positions. A 5/8 inch rebar and iron pipe were found approximately below the mag nail. Another 5/8 inch rebar was found to the north and west. A 1/2 inch rebar was also found northeast of the mag nail. No stone was found and the preponderance of evidence indicates that the 1/2 inch rebar represents the position of the stone found in 1974. It has been observed at other corners that the term "stone found" on a tie card from the summer of 1974 generally indicates that a stone was found, removed and replaced with a metal monument, being either a railroad rail on end or a 1/2 inch rebar. The presence of the rebar is consistent with this observation. The 1/2 inch rebar fits with the distance ties shown on the 1974 tie card, whereas none of the other monuments fit with those distance ties. Furthermore, excavation revealed that the top 14 inches of the road bed are either asphalt (top two inches) or recent fill material (2 - 14 inches deep.) The two 5/8 inch rebars and the pipe were all well within the recent fill material, but the 1/2 inch rebar was at 14 inches, with the top of the being at the top of the older fill material. The 1/2 inch rebar was accepted as the best available evidence of the position of the stone found in 1974 and was held as marking the corner. A harrison monument was set in its place. The mag nail, pipe and one rebar (all removed during excavation) had been 1.7 feet south and 0.6 foot west of the corner. The other 5/8 inch rebar had been 0.6 foot south and 1.9 feet west of the corner. This corner was originally established as a wood post in July, 1821.



*Kenneth E. Hedge*  
 Kenneth E. Hedge, County Surveyor

*James S. Swift*  
 James S. Swift, IN LS 20200054  
 July 25, 2011

Marion Twp

Section 22 T19N, R2E	Section 23 T19N, R2E
-------------------------	-------------------------

Union Twp

Section 27 T19N, R2E	Section 26 T19N, R2E
-------------------------	-------------------------



# SECTION CORNER RECORD

NE 200-1050

## BOONE COUNTY SURVEYOR'S OFFICE

State Plane grid coordinates NAD83 (CORS96):

North: 1757305.70 East: 3180331.14 (U.S. survey feet)

Type of monument: Harrison, 4" disk 'Section Corner'

Depth: four inches above adjacent grade

Indiana tie card references:

IN02\_T19NR2E23\_76

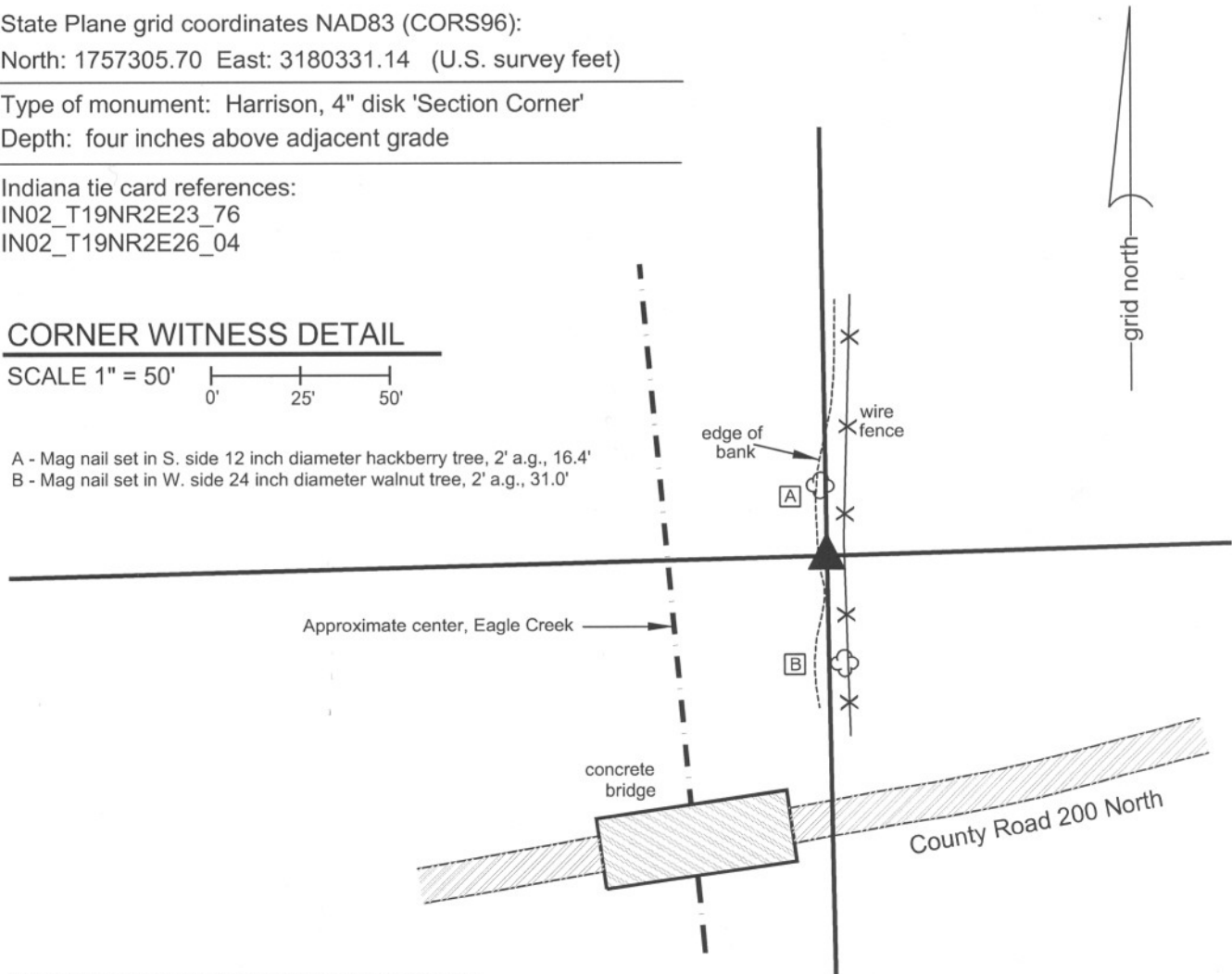
IN02\_T19NR2E26\_04

### CORNER WITNESS DETAIL

SCALE 1" = 50'



- A - Mag nail set in S. side 12 inch diameter hackberry tree, 2' a.g., 16.4'
- B - Mag nail set in W. side 24 inch diameter walnut tree, 2' a.g., 31.0'

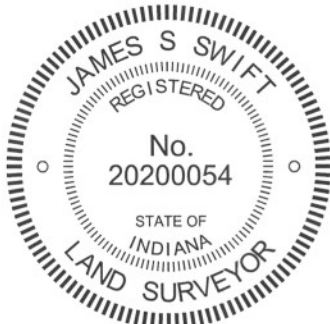


The harrison monument was set in place of a rebar found.

A BCS recrod dated May 8, 1861 states "Reestablished from old trees both here. Set a Rock 10,6 by 5 inches." No recent BCS tie cards were found referencing this corner.

This corner was investigated before and during September, 2011. The corner falls near the bank of Eagle Creek and the location of the typical forms of evidence such as roads and fences are directly influenced by the presence of the creek. A 5/8 inch diameter rebar with a plastic cap stamped "Dodge" was found near the midpoint of the line connecting the section corners to the east and west. The rebar falls 2.6 feet south and 2.2 feet west of the midpoint. The rebar was well north of county road 200 north, but is in line with the extended center of the road to the east. The rebar was slightly west of the north-south fence near the corner. The fence is not straight and generally follows the creek bank. The landowner to the east noted that the fence was built to hold livestock and its position was determined by the location of the creek bank and that it was never intended to follow mark the property or section line. Extensive probing was performed in the immediate vicinity of the stone and calculated midpoint in search of the stone mentioned in the 1861 record or other physical evidence of the corner. Significant excavation was not performed, as the corner is immediately adjacent to the bank of Eagle Creek and excavation was not deemed prudent in this location. No further evidence of the corner was found and the rebar was held as marking the corner. The rebar was removed and a harrison monument was set in concrete within a vertical section of 12" HDPE corrugated smooth wall pipe. The harrison monument was set on September 6, 2011.

This corner was originally established as a wood post in July, 1821.



*Kenneth E. Hedge*  
 Kenneth E. Hedge, County Surveyor

*James S. Swift*  
 James S. Swift, IN LS 20200054  
 March 1, 2012

Marion Twp

Section 23  
T19N, R2E

Union Twp

Section 26  
T19N, R2E

# SECTION CORNER RECORD

NE 200-1100

## BOONE COUNTY SURVEYOR'S OFFICE

State Plane grid coordinates NAD83 (NSRS 2007):

North: 1757380.00 East: 3182991.00 (U.S. survey feet)

Type of monument: Harrison, 4" disk 'Section Corner'

Depth: One inch below adjacent road surface

Indiana tie card references:

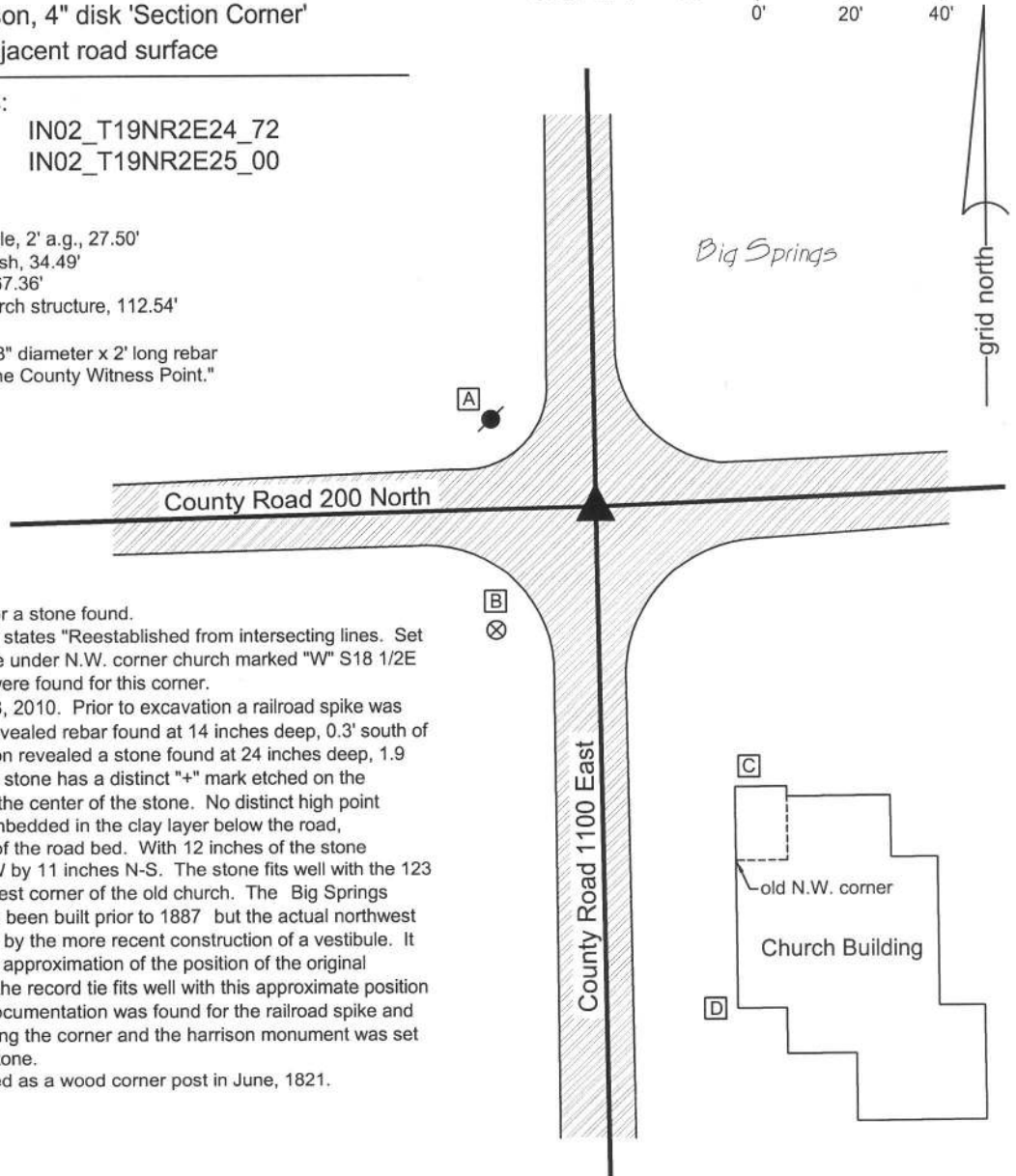
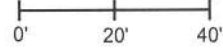
IN02\_T19NR2E23\_80      IN02\_T19NR2E24\_72  
IN02\_T19NR2E24\_08      IN02\_T19NR2E25\_00

- A - Mag nail set in S. side power pole, 2' a.g., 27.50'
- B - Boone County witness mark, flush, 34.49'
- C - N.W. corner, church vestibule, 67.36'
- D - Southwesterly corner, main church structure, 112.54'

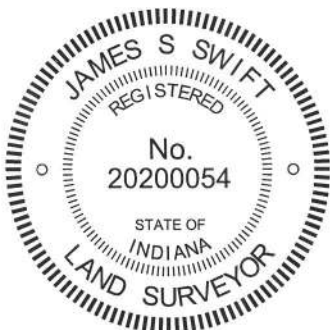
Boone County witness mark is a 3/8" diameter x 2' long rebar bearing a metal cap stamped "Boone County Witness Point."

### CORNER WITNESS DETAIL

SCALE 1" = 40'



The harrison monument was set over a stone found. A BCS record of September 5, 1887 states "Reestablished from intersecting lines. Set a rock 27,11,15 +. Foundation stone under N.W. corner church marked "W" S18 1/2E 123 1/2." No recent BCS tie cards were found for this corner. This corner was excavated on July 8, 2010. Prior to excavation a railroad spike was visible at the surface. Excavation revealed rebar found at 14 inches deep, 0.3' south of the railroad spike. Further excavation revealed a stone found at 24 inches deep, 1.9 feet south of the railroad spike. The stone has a distinct "+" mark etched on the sloping south side at approximately the center of the stone. No distinct high point exists on the stone. The stone is embedded in the clay layer below the road, protruding 2 inches into the bottom of the road bed. With 12 inches of the stone exposed, it measures 11 inches E-W by 11 inches N-S. The stone fits well with the 123 1/2 link (81.51 feet) tie to the northwest corner of the old church. The Big Springs Community Church appears to have been built prior to 1887 but the actual northwest corner of the old church is obscured by the more recent construction of a vestibule. It is possible to estimate a reasonable approximation of the position of the original northwest corner of the church and the record tie fits well with this approximate position of the building corner. No source documentation was found for the railroad spike and rebar. The stone was held as marking the corner and the harrison monument was set directly over the etched "+" on the stone. This corner was originally established as a wood corner post in June, 1821.



*Kenneth E. Hedge*  
Kenneth E. Hedge, County Surveyor

*James S. Swift*  
James S. Swift, IN LS 20200054  
July 25, 2011, Revised March 18, 2013

Marion Twp	Section 23 T19N, R2E	Section 24 T19N, R2E
Union Twp	Section 26 T19N, R2E	Section 25 T19N, R2E

PHOTOGRAPHIC DOCUMENTATION

Date of photography: July 8, 2010

View of the stone from the south.



View of the stone from the south, showing mark.



View from above the stone looking east along County Road 200 North.



View of the stone from the north.



Big Springs Community Church, from above the stone at the time of excavation.



For details and documentation, refer to related sheet "Section Corner Record."