

# SECTION CORNER RECORD

## BOONE COUNTY SURVEYOR'S OFFICE

NE 100-400

State Plane grid coordinates NAD83 (CORS96):

North: 1751081.15 East: 3145754.89 (U.S. survey feet)

Type of monument: Harrison, 4" disk 'Section Corner'

Depth: One inch below adjacent road surface

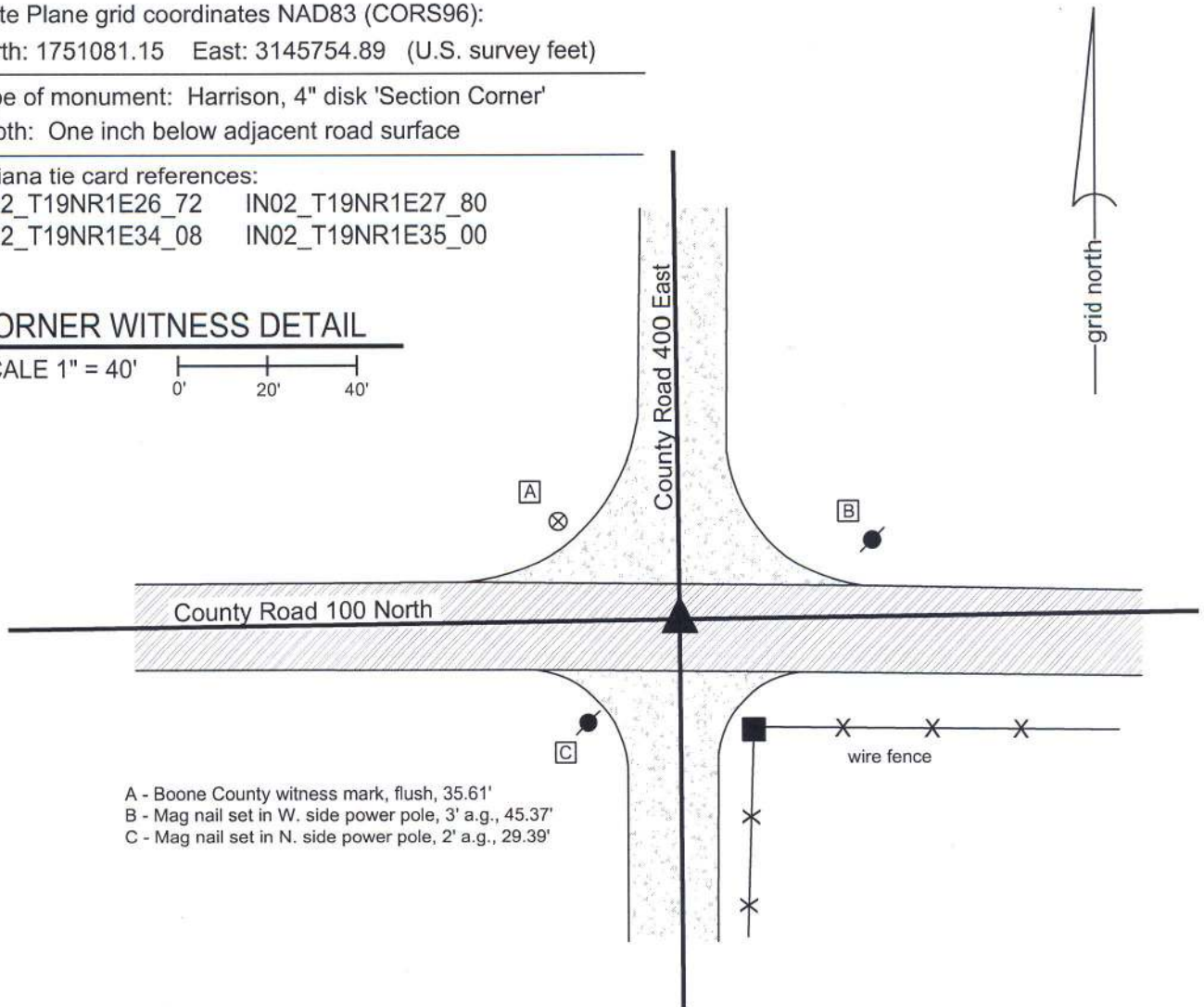
Indiana tie card references:

IN02\_T19NR1E26\_72 IN02\_T19NR1E27\_80

IN02\_T19NR1E34\_08 IN02\_T19NR1E35\_00

### CORNER WITNESS DETAIL

SCALE 1" = 40'



- A - Boone County witness mark, flush, 35.61'
- B - Mag nail set in W. side power pole, 3' a.g., 45.37'
- C - Mag nail set in N. side power pole, 2' a.g., 29.39'

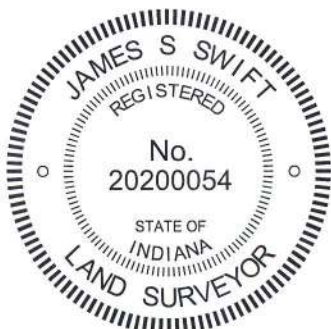
The harrison monument was set in place of a railroad rail found.

A BCS record of February, 1871 states "Reestablished from stump of Sugar and stake. Set Rock 13.6.5-1/2 +. A brick bat marked + under it." A BCS tie card dated June, 1968 shows the corner, but does not state any information about a monument. However, the field notes associated with that tie card state "stone found." A BCS tie card dated July, 28, 2005 shows the corner as a harrison monument with no documentation of source.

This corner was excavated on September 30, 2011. Prior to excavation a harrison monument was found at the surface. Excavation revealed a railroad rail found at 8 inches below grade, generally below the harrison, but approximately 0.1' N and 0.1' E of the position of the center of the harrison. No further evidence was found. It is known that it was a common practice for BCS crews in the late 1960s to remove a stone, when found, and replace it with a railroad rail. The documentation for such events typically states "stone found" with no mention of the removal of the stone or placement of the rail. It appears that the same procedure was followed for this corner.

The railroad rail and harrison were both removed during excavation. A new harrison monument was set in place of the railroad rail.

This corner was originally established as a wood post in June, 1822.



*Kenneth E. Hedge*  
 Kenneth E. Hedge, County Surveyor

*James S. Swift*  
 James S. Swift, IN LS 20200054  
 January 15, 2013

Center Township

Section 27 T19N, R1E	Section 26 T19N, R1E
Section 34 T19N, R1E	Section 35 T19N, R1E

# SECTION CORNER RECORD

NE 100-450

## BOONE COUNTY SURVEYOR'S OFFICE

State Plane grid coordinates NAD83 (CORS 96):

North: 1751113.04 East: 3148401.04 (U.S. survey feet)

Type of monument: Harrison, 4" disk 'Section Corner'

Depth: One inch below adjacent road surface

Indiana tie card references:

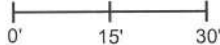
IN02\_T19NR1E26\_76

IN02\_T19NR1E35\_04



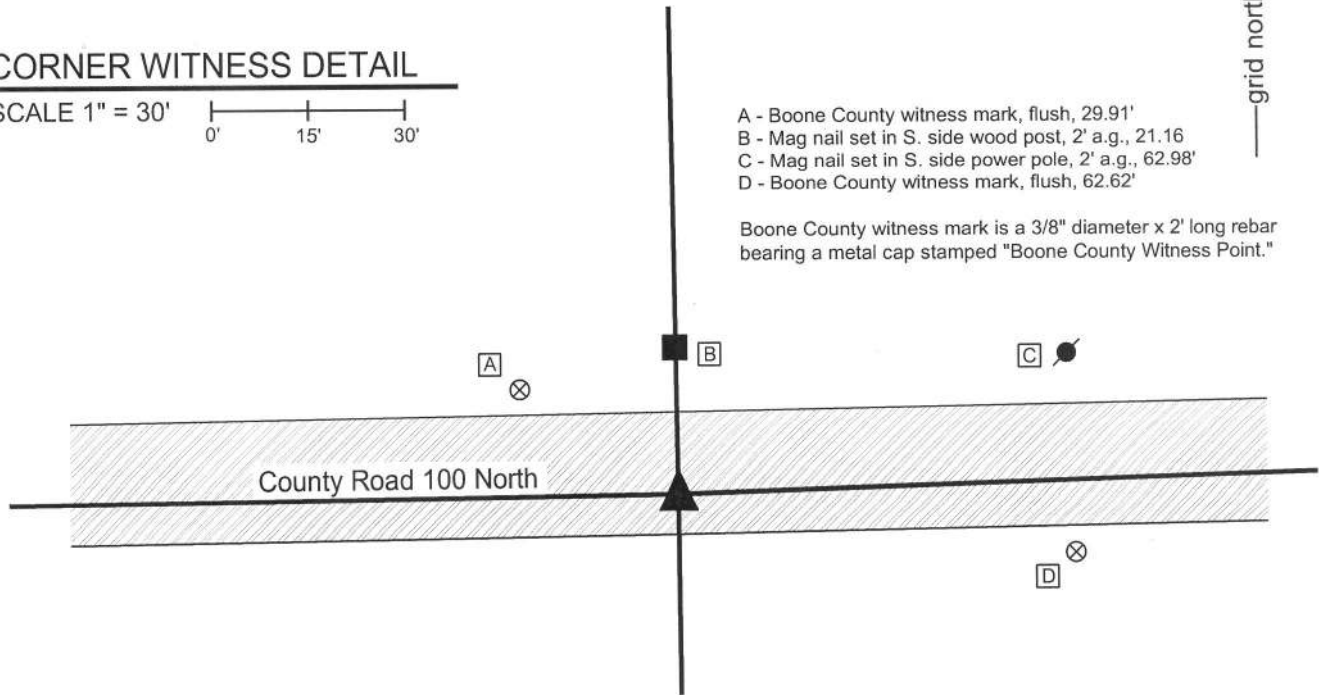
### CORNER WITNESS DETAIL

SCALE 1" = 30'



- A - Boone County witness mark, flush, 29.91'
- B - Mag nail set in S. side wood post, 2' a.g., 21.16
- C - Mag nail set in S. side power pole, 2' a.g., 62.98'
- D - Boone County witness mark, flush, 62.62'

Boone County witness mark is a 3/8" diameter x 2' long rebar bearing a metal cap stamped "Boone County Witness Point."



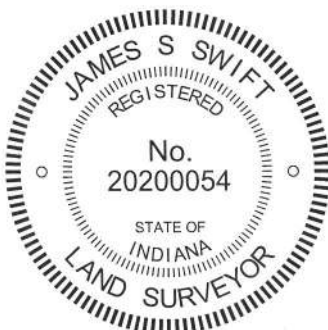
The harrison monument was set over a stone found.

A BCS record of September 17, 1867 states "Reestablished from the trees. Set a Rock 16.13 by 6-1/2 "+" on top." A BCS tie card dated July, 1968 states "no stone found." A BCS tie card dated August 2, 2005 shows the corner as a harrison monument with no documentation of source.

This corner was excavated on September 28, 2011. Prior to excavation a harrison monument was found in a hole in the asphalt 1 inch below grade. Excavation revealed a railroad rail found at 8 inches below grade, directly below the harrison monument. The 1968 tie card does not mention the rail, but it is most likely that the rail was set in association with the creation of that document. Further exacation revealed a stone found at 13 inches below grade, south and east of the rail. The stone is fully embedded in the clay layer below the road. With the top 9 inches of the stone exposed, it measures 13 inches E-W by 6 1/2 inches N-S. The stone is generally vertical, though leaning slightly to the south. An etched "+" is clearly visible on the top of the stone, on the sloping west side of the top. The full height of the stone was not measured, but with 9 inches exposed, it remained stable in the clay, indicating more depth. With the found mark and two matching dimensions, this was accepted as being the stone called for in the 1867 record. The top, high point of the stone was held as marking the corner. The stone is in line with the old end post at the north edge of the road. The stone is 3.1 feet south and 3.3 feet east of the position of the found harrison monument and railroad rail, both of which were removed during excavation. The stone was left in place and a new harrison monument was set directly over the top, high point of the stone, slightly east of the etched "+" on the top, sloping west side of the stone.

This corner was originally established as a wood post in June, 1822.

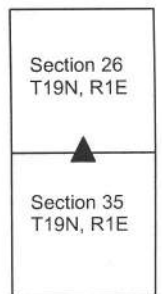
Center  
Twp



*Kenneth E. Hedge*  
Kenneth E. Hedge, County Surveyor

*James S. Swift*  
James S. Swift, IN LS 20200054

March 1, 2012, revised February 14, 2014



PHOTOGRAPHIC DOCUMENTATION

Date of photography: September 28, 2011

View of the stone as first exposed.



View of the stone more fully exposed.



View of the stone as with dust washed off.



View from the south showing the found stone, and the old post on the north side of the road.



View showing the found stone and a shovel set temporarily in the position of the rail, as found.



For details and documentation, refer to related sheet "Section Corner Record."

# SECTION CORNER RECORD

## BOONE COUNTY SURVEYOR'S OFFICE

NE 100-500

State Plane grid coordinates NAD83 (NSRS 2007):

North: 1751187.06 East: 3151049.35 (U.S. survey feet)

Type of monument: Harrison, 4" disk 'Section Corner'

Depth: One inch below adjacent road surface

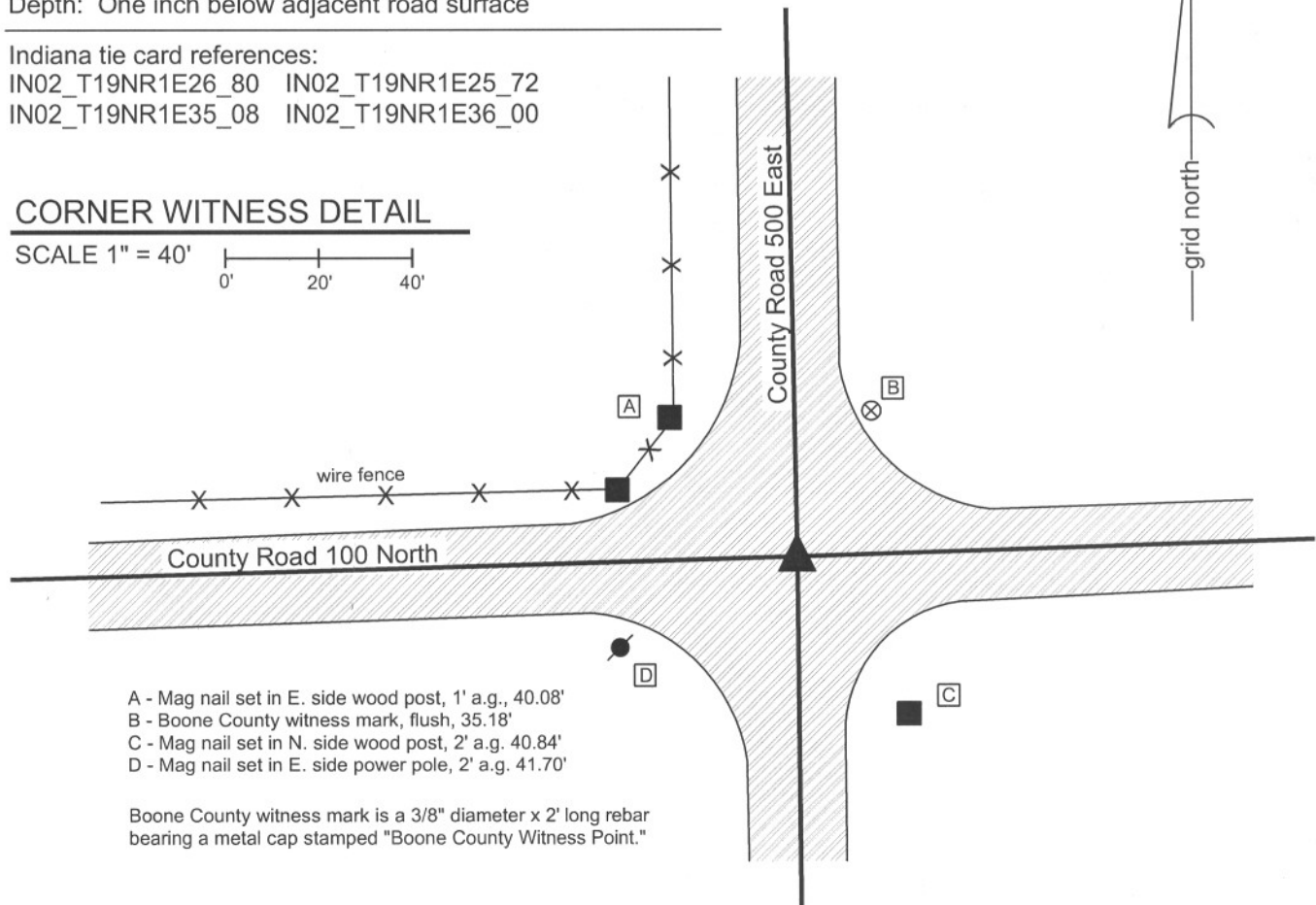
Indiana tie card references:

IN02\_T19NR1E26\_80 IN02\_T19NR1E25\_72

IN02\_T19NR1E35\_08 IN02\_T19NR1E36\_00

### CORNER WITNESS DETAIL

SCALE 1" = 40'



- A - Mag nail set in E. side wood post, 1' a.g., 40.08'
- B - Boone County witness mark, flush, 35.18'
- C - Mag nail set in N. side wood post, 2' a.g. 40.84'
- D - Mag nail set in E. side power pole, 2' a.g. 41.70'

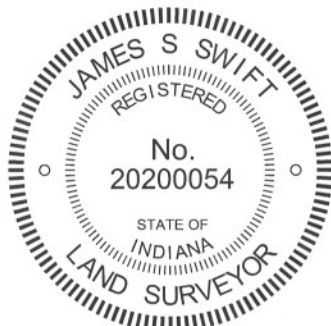
Boone County witness mark is a 3/8" diameter x 2' long rebar bearing a metal cap stamped "Boone County Witness Point."

The harrison monument was set in place of a vertical section of railroad rail found.

A BCS record of September 17, 1867 states "Reestablished drove a stake." A BCS record of August 4-5, 1868 shows the corner as the terminal point for measurements with no description of monumentation. A BCS tie card dated July, 1968 shows the corner but does not mention a monument. The field notes associated with this document state "no stone." A BCS tie card dated May 29, 1991 shows the corner as "angle iron fd. (rail)." A BCS tie card dated August 4, 2005 shows the corner as a harrison monument.

This corner was excavated on July 12, 2011. Prior to excavation a harrison monument was found at the surface. Excavation revealed a section of railroad rail on end found at 6 inches deep. The center of the rail was 0.3' south and 0.1' west of the harrison. No evidence was found directly below the harrison. Further excavation revealed a wood stake found at 10 inches deep, 2.1' west and 0.5' south of the rail. The stake was entirely in the fill material of the road and appears to be much newer than a wood stake from 1867. No other evidence was found in an area of excavation extending 2.5' East, 2.5' West, 4' South and 2' North of the original found harrison monument. Excavation was extended to the clay layer below the road, at 3 feet deep. The found railroad rail was held as the corner. It is most likely that the rail was established in association with the 1968 tie card. It is noted the lay of the surrounding ground indicates that this corner was likely low and occasionally wet during the wagon road era.

This corner was originally established as a wood stake in June, 1822.



*Kenneth E. Hedge*  
 Kenneth E. Hedge, County Surveyor

*James S. Swift*  
 James S. Swift, IN LS 20200054

March 1, 2012

Center Township

Section 26 T19N, R1E	Section 25 T19N, R1E
Section 35 T19N, R1E	Section 36 T19N, R1E

# SECTION CORNER RECORD

## BOONE COUNTY SURVEYOR'S OFFICE

NE 150-400

State Plane grid coordinates NAD83 (CORS96):  
 North: 1753727.21 East: 3145723.99 (U.S. survey feet)

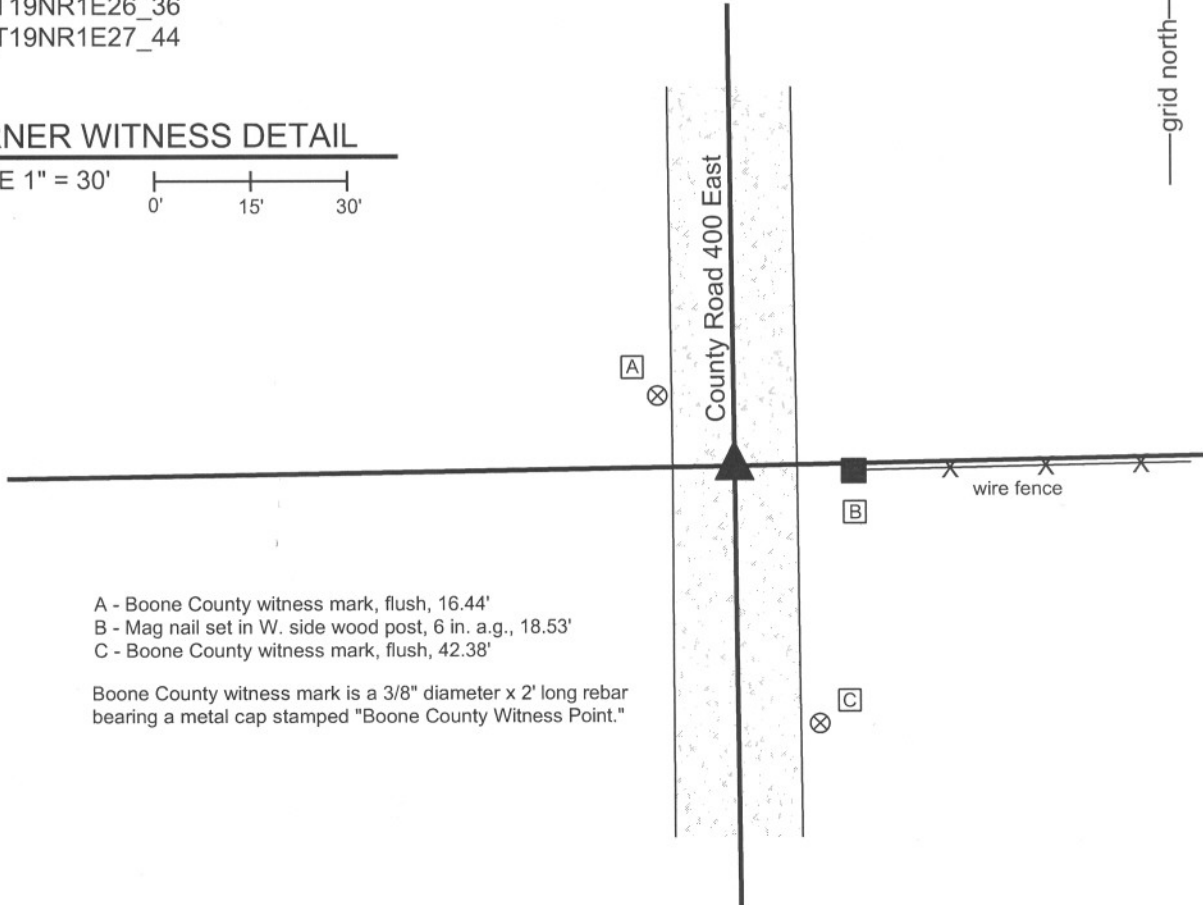
Type of monument: Harrison, 4" disk 'Section Corner'  
 Depth: Six inches below adjacent gravel road surface

Indiana tie card references:  
 IN02\_T19NR1E26\_36  
 IN02\_T19NR1E27\_44



### CORNER WITNESS DETAIL

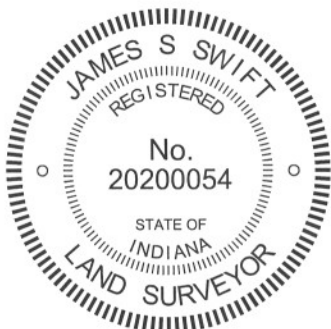
SCALE 1" = 30'



- A - Boone County witness mark, flush, 16.44'
- B - Mag nail set in W. side wood post, 6 in. a.g., 18.53'
- C - Boone County witness mark, flush, 42.38'

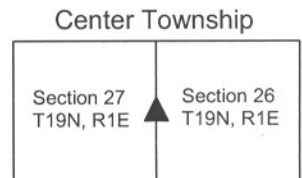
Boone County witness mark is a 3/8" diameter x 2' long rebar bearing a metal cap stamped "Boone County Witness Point."

The Harrison monument was set in place of a vertical section of railroad rail found. A BCS record of March 5, 1858 states "Reestablished. Set Rock 10 by 12 in." A BCS record of August 4-5, 1868 states "Rock was set 4 lks too from Oak." (Note: the record does not qualify too "what.") A BCS tie card dated September 22, 1971 states "No stone. RRR put in." A BCS tie card dated July 22, 2005 states shows the corner as a steel rail. This corner was excavated on March 2, 2010. Prior to excavation a railroad rail was found at 2 inches below the surface of the gravel road. Excavation of an area extending 4 feet north, 6 feet east, 10 feet south and 4 feet west of the rail yielded no further evidence of the corner. The gravel road bed in this vicinity is approximately 1 foot thick. Excavation was extended to a minimum of 20 inches deep. The rail was in the approximate center of the north-south county road and slightly north of the westerly extension of an old fence to the east. The position of the rail was held as the best available evidence of the corner. The rail was removed during excavation and was replaced with a Harrison monument. This corner was originally established as a wood post in June, 1822.



*Kenneth E. Hedge*  
 Kenneth E. Hedge, County Surveyor

*James S. Swift*  
 James S. Swift, IN LS 20200054  
 March 1, 2012



# SECTION CORNER RECORD

NE 150-500

## BOONE COUNTY SURVEYOR'S OFFICE

State Plane grid coordinates NAD83 (CORS96):

North: 1753835.39 East: 3151002.21 (U.S. survey feet)

Type of monument: Harrison, 4" disk 'Section Corner'

Depth: One inch below adjacent road surface

Indiana tie card references:

IN02\_T19NR1E25\_36

IN02\_T19NR1E26\_44

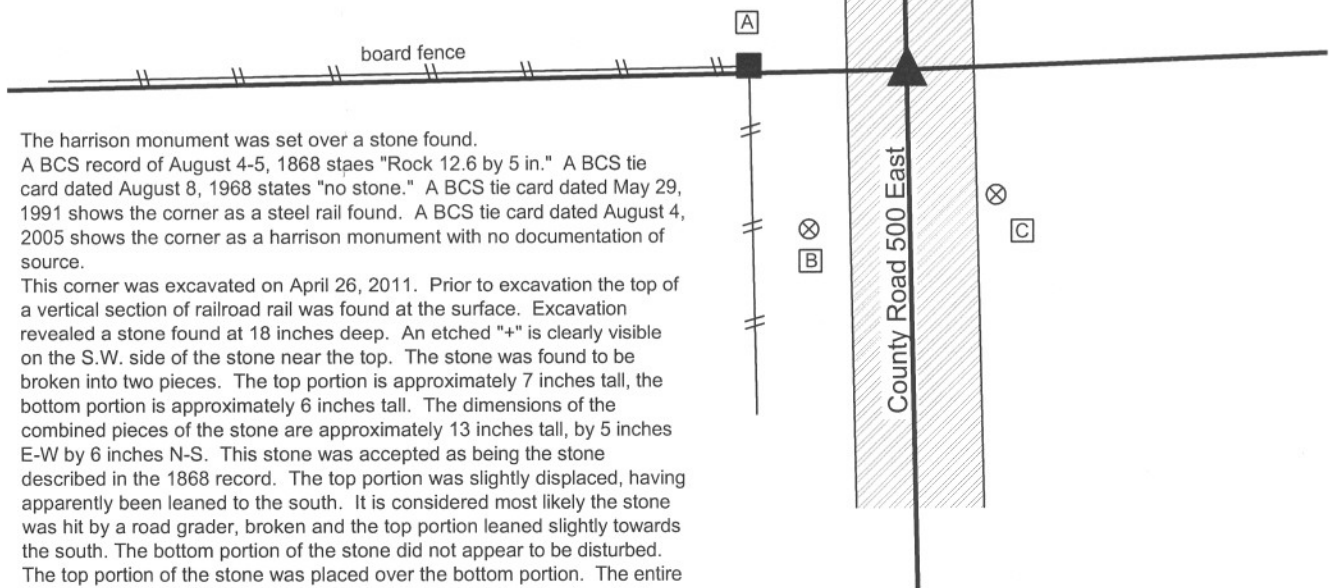
### CORNER WITNESS DETAIL

SCALE 1" = 30'



- A - Mag nail set in E. side wood post, 6 in. a.g., 24.57'
- B - Boone County witness mark, flush, 29.20'
- C - Boone County witness mark, flush, 24.01'

Boone County witness mark is a 3/8" diameter x 2' long rebar bearing a metal cap stamped "Boone County Witness Point."



The Harrison monument was set over a stone found.

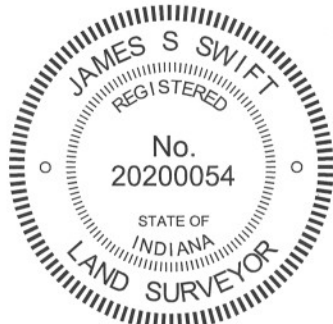
A BCS record of August 4-5, 1868 states "Rock 12.6 by 5 in." A BCS tie card dated August 8, 1968 states "no stone." A BCS tie card dated May 29, 1991 shows the corner as a steel rail found. A BCS tie card dated August 4, 2005 shows the corner as a Harrison monument with no documentation of source.

This corner was excavated on April 26, 2011. Prior to excavation the top of a vertical section of railroad rail was found at the surface. Excavation revealed a stone found at 18 inches deep. An etched "+" is clearly visible on the S.W. side of the stone near the top. The stone was found to be broken into two pieces. The top portion is approximately 7 inches tall, the bottom portion is approximately 6 inches tall. The dimensions of the combined pieces of the stone are approximately 13 inches tall, by 5 inches E-W by 6 inches N-S. This stone was accepted as being the stone described in the 1868 record. The top portion was slightly displaced, having apparently been leaned to the south. It is considered most likely the stone was hit by a road grader, broken and the top portion leaned slightly towards the south. The bottom portion of the stone did not appear to be disturbed. The top portion of the stone was placed over the bottom portion. The entire bottom and most of the top portion were embedded in the clay layer below the road bed.

A Harrison monument was set in a position directly over the center of the bottom portion of the stone. Both parts of the stone were left in place. The top portion was encased in concrete.

The railroad rail, removed during excavation, had been 1.7 feet north and 1.7' east of the stone. No Harrison monument, as mentioned in the 2005 tie card, was found prior to or during excavation.

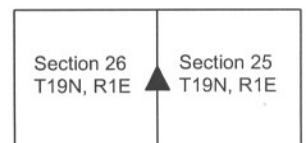
This corner was originally established as a wood post in June, 1822.



*Kenneth E. Hedge*  
Kenneth E. Hedge, County Surveyor

*James S. Swift*  
James S. Swift, IN LS 20200054  
March 1, 2012

Center Township



PHOTOGRAPHIC DOCUMENTATION

Date of photography: April 26, 2011

The top of the rail prior to excavation.



The stone as first exposed.



View of the top part of the stone, from the south, looking north along County Road 500 East.



Both parts of the stone, embedded.



Both parts of the stone. The top part has been placed directly on the still embedded bottom part.



For details and documentation, refer to related sheet "Section Corner Record."

# SECTION CORNER RECORD

## BOONE COUNTY SURVEYOR'S OFFICE

NE 200-400

State Plane grid coordinates NAD83 (CORS96):  
 North: 1756371.85 East: 3145690.21 (U.S. survey feet)

Type of monument: Harrison, 4" disk 'Section Corner'  
 Depth: six inches below adjacent gravel road surface

Indiana tie card references:  
 IN02\_T19NR1E22\_80      IN02\_T19NR1E23\_72  
 IN02\_T19NR1E27\_08      IN02\_T19NR1E26\_00

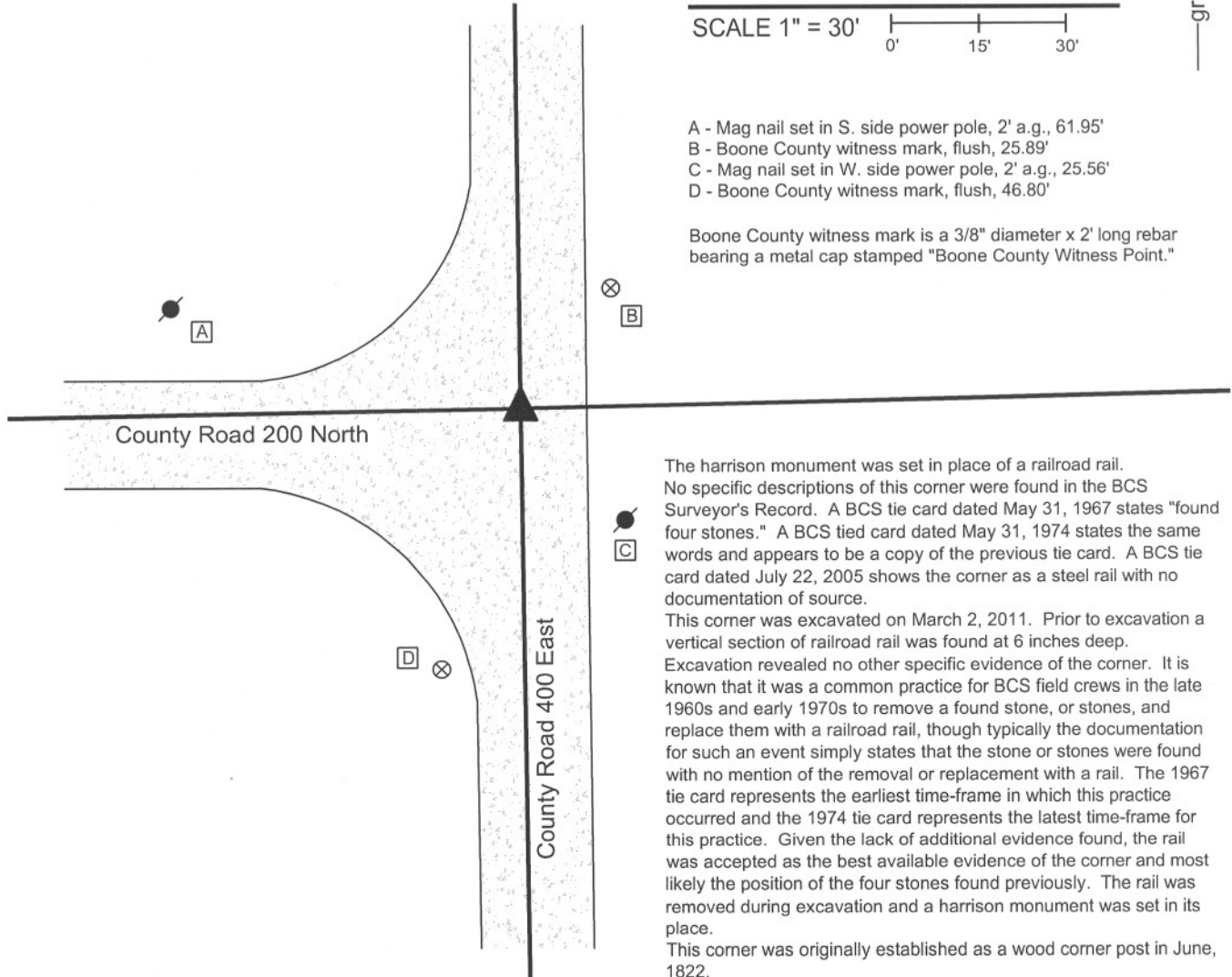
### CORNER WITNESS DETAIL

SCALE 1" = 30'



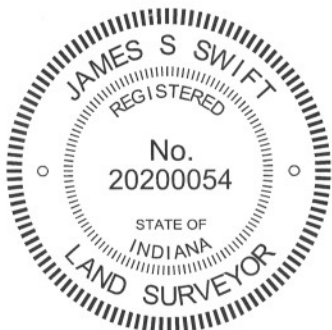
- A - Mag nail set in S. side power pole, 2' a.g., 61.95'
- B - Boone County witness mark, flush, 25.89'
- C - Mag nail set in W. side power pole, 2' a.g., 25.56'
- D - Boone County witness mark, flush, 46.80'

Boone County witness mark is a 3/8" diameter x 2' long rebar bearing a metal cap stamped "Boone County Witness Point."



The harrison monument was set in place of a railroad rail. No specific descriptions of this corner were found in the BCS Surveyor's Record. A BCS tie card dated May 31, 1967 states "found four stones." A BCS tied card dated May 31, 1974 states the same words and appears to be a copy of the previous tie card. A BCS tie card dated July 22, 2005 shows the corner as a steel rail with no documentation of source.

This corner was excavated on March 2, 2011. Prior to excavation a vertical section of railroad rail was found at 6 inches deep. Excavation revealed no other specific evidence of the corner. It is known that it was a common practice for BCS field crews in the late 1960s and early 1970s to remove a found stone, or stones, and replace them with a railroad rail, though typically the documentation for such an event simply states that the stone or stones were found with no mention of the removal or replacement with a rail. The 1967 tie card represents the earliest time-frame in which this practice occurred and the 1974 tie card represents the latest time-frame for this practice. Given the lack of additional evidence found, the rail was accepted as the best available evidence of the corner and most likely the position of the four stones found previously. The rail was removed during excavation and a harrison monument was set in its place. This corner was originally established as a wood corner post in June, 1822.



*Kenneth E. Hedge*  
 Kenneth E. Hedge, County Surveyor

*James S. Swift*  
 James S. Swift, IN LS 20200054  
 March 1, 2012

Center Township

Section 22 T19N, R1E	Section 23 T19N, R1E
Section 27 T19N, R1E	Section 26 T19N, R1E



# SECTION CORNER RECORD

NE 200-450

## BOONE COUNTY SURVEYOR'S OFFICE

State Plane grid coordinates NAD83 (2011):

North: 1756421.53 East: 3148324.56 (U.S. survey feet)

Type of monument: Harrison, 4" disk 'Section Corner'

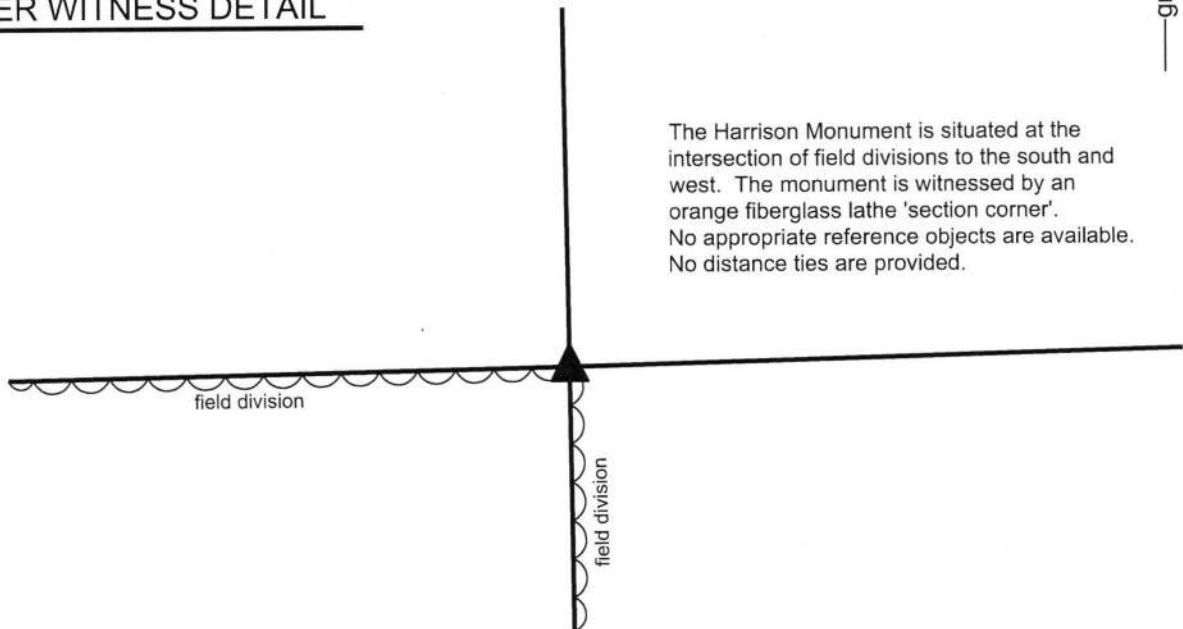
Depth: One inch above adjacent ground

Indiana tie card references:

IN02\_T19NR1E23\_76 IN02\_T19NR1E26\_04

### CORNER WITNESS DETAIL

No scale



The Harrison Monument is situated at the intersection of field divisions to the south and west. The monument is witnessed by an orange fiberglass lathe 'section corner'. No appropriate reference objects are available. No distance ties are provided.

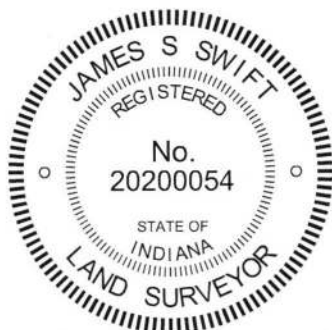
The Harrison monument was set over the subterranean base of a wood corner post.

A BCS record dated August 4-5, 1868 states, with respect to this corner, "Reestablished from Trees, drove stake."

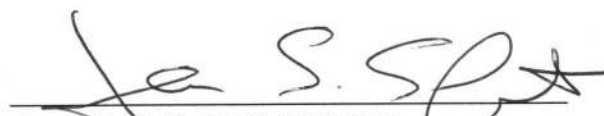
A BCS tie card dated August 16, 2005 shows the corner as a PK Nail set in top of wood corner post. The document demonstrates the post to be at the intersection of fences to the south and west.

This corner was excavated on October 19, 2017. Prior to excavation, an ancient wood corner post was found lying on the ground at the intersection of field divisions to the south and west. The subterranean base of the post was found in general agreement with the coordinates shown on the 2005 tie card. Excavation around the post revealed no other evidence of the corner. The post was accepted as providing the best available evidence of the corner and was held as marking the corner. The post is 8 inch by 8 inch cedar. The base of the post, underground, was completely solid and appeared to have decayed minimally. The upper most portion of the top of the base of the post was sawed off. Approximately the top 12 inches of the remainder of the base of the post was encased in concrete and the Harrison monument was set directly over the remaining portion of the base of the post. The fences shown on the 2005 tie card are no longer present.

This corner was originally established as a wood post in 1822.



  
Kenneth E. Hedge, County Surveyor

  
James S. Swift, IN LS 20200054  
October 31, 2017

Center Twp

Section 23  
T19N, R1E

Section 26  
T19N, R1E

# SECTION CORNER RECORD

## BOONE COUNTY SURVEYOR'S OFFICE


NE 200-500

State Plane grid coordinates NAD83 (CORS96):  
 North: 1756487.56 East: 3150955.66 (U.S. survey feet)

Type of monument: Harrison, 4" disk 'Section Corner'  
 Depth: One inch below adjacent road surface

Indiana tie card references:  
 IN02\_T19NR1E23\_80 IN02\_T19NR1E24\_72  
 IN02\_T19NR1E26\_08 IN02\_T19NR1E25\_00

### CORNER WITNESS DETAIL

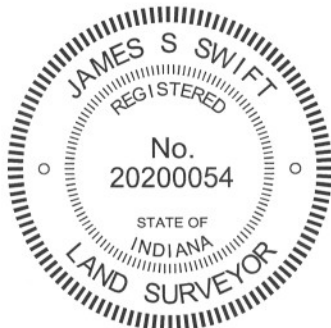
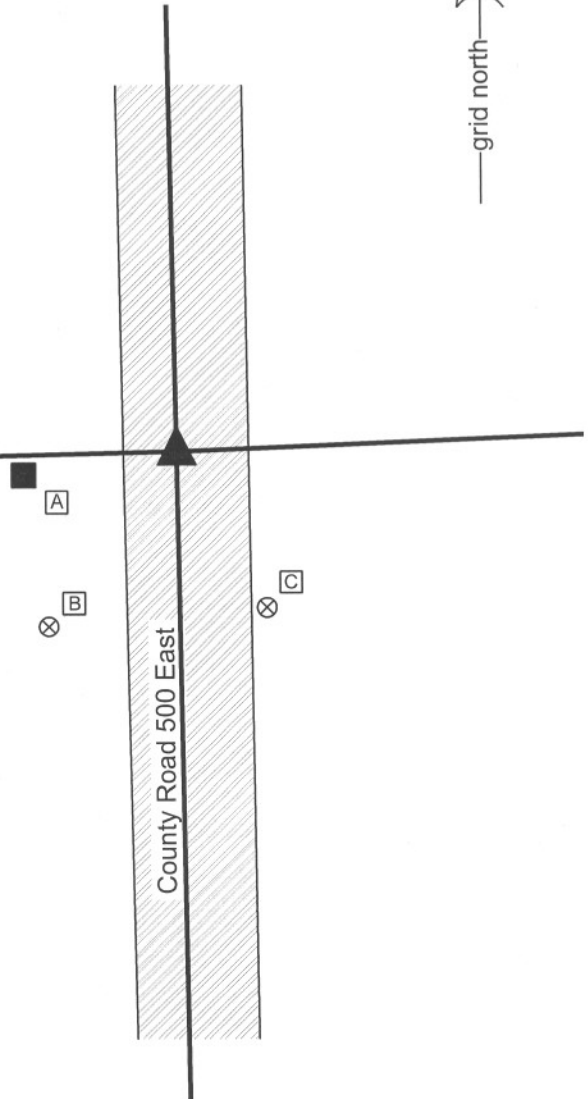
SCALE 1" = 30' 

- A - Mag nail set in E. side wood post, 1' a.g., 23.47'
- B - Boone County witness mark, flush, 28.21'
- C - Boone County witness mark, flush, 33.91'

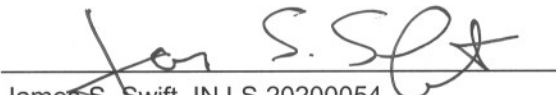
Boone County witness mark is a 3/8" diameter x 2' long rebar bearing a metal cap stamped "Boone County Witness Point."



The harrison monument was set over a stone found.  
 A BCS record of March 25, 1903 calls for a rock set 5,8,17 + on top. This record also calls for intermediate corners which are not shown on the diagram for the section and may be describing another section. The corner is shown as a terminal point for measurements in 1860. A BCS tie card dated 1991 show the corner as a steel rail found. A BCS tie card dated August 3, 2005 show the corner as a harrison monument with no documentation of source.  
 This corner was excavated on March 30, 2011. Prior to excavation a harrison monument was found at the surface. Excavation revealed a railroad rail found at 6 inches deep, below the harrison. Further excavation revealed two stones. The upper stone was a small stone found the in the fill material. The lower stone, found directly below the upper stone, was fully embedded in the clay layer below the road, protruding approximately 1 inch into the bottom of the road bed. With the top 8 inches of the stone exposed, it measures 12 inches N-S by 6 inches E-W, oriented N-S with a distinct N-S ridge and a clear high point on the top, center of the ridge. The east side of the stone is vertical and the west side slopes. The full height of the stone was not measured. The dimensions of the stone do not match the aforementioned 1903 record, but some question exists with respect to this record. The stone does match the characteristics of stones found marking other corners, being vertical, oriented in cardinal directions and embedded in the clay layer below the road. The stone was accepted as the best evidence of the corner and the distinct high point on the N-S ridge was held as marking the corner. The stone was left in place and the harrison monument set above it. The railroad rail and harrison monument, both removed during excavation, had been 2.4' feet south and 0.4 foot east of the stone.  
 This corner was originally established as a wood post in June, 1822.



  
 Kenneth E. Hedge, County Surveyor

  
 James S. Swift, IN LS 20200054  
 March 1, 2012

Center Township

Section 23 T19N, R1E	Section 24 T19N, R1E
Section 26 T19N, R1E	Section 25 T19N, R1E

PHOTOGRAPHIC DOCUMENTATION

Date of photography: March 30, 2011

View of the stone as first exposed. The small rock found in the fill is on the asphalt to the right.



View of the stone from above and west.



View from above the stone looking south along County Road 500 East.



View of the stone from above and south.



For details and documentation, refer to related sheet "Section Corner Record."