

SECTION CORNER RECORD

BOONE COUNTY SURVEYOR'S OFFICE

SW 400-700

State Plane grid coordinates NAD83 (2011):

North: 1724182.17 East: 3087949.56 (U.S. survey feet)

Type of monument: Harrison, 4" disk 'Section Corner'

Depth: Six inches below adjacent gravel road surface

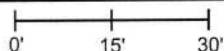
Indiana tie card references:

IN02_T18NR2W23_80 IN02_T18NR2W24_72

IN02_T18NR2W26_08 IN02_T18NR2W25_00

CORNER WITNESS DETAIL

SCALE 1" = 30'



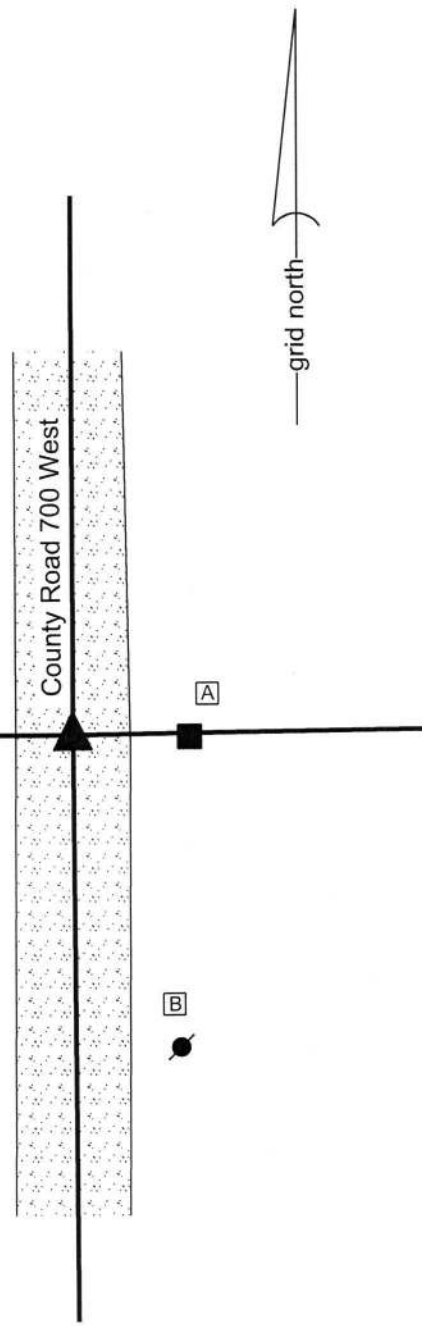
- A - Mag nail set in W. side wood post, 1' a.g., 16.6'
- B - Mag nail set in W. side power pole, 2' a.g., 50.8'
- C - Boone County witness mark, flush, 37.1'

Boone County witness mark is a 3/8" diameter x 2' long rebar bearing a metal cap stamped "Boone County Witness Point."

The Harrison monument was set in place of a vertical section of railroad rail found. A BCS record of August 16-18, 1858 states, with respect to this corner, "reest. from old witness trees. Set a rock 17, 24." A BCS tie card of March 20, 1969 shows the corner and states "no stone."

This corner was excavated on December 18, 2017. Prior to excavation, a vertical section of railroad rail was found at 4 inches deep in the gravel road opposite a wood end post on the east side of the road. Although the 1969 tie card does not mention the rail, it is considered most likely that the rail was set in association with the creation of that document. It is known to have been a common practice of BCS field crews from that era to set vertical sections of railroad rail but to not specifically state that fact on the associated documentation sheets. Excavation of an area extending 3 feet north, 3 feet south, 4 feet east and 4 feet west of the rail revealed no further evidence of the corner. The area was excavated to 16 inches deep, approximately 2 inches into the clay layer below the road bed. It is noted that the base material of the road bed was sufficiently substantial in size to indicate that the immediate vicinity of the corner was likely subject to standing in water when the road bed was established. The presence of an open ditch immediately to the north of and at similar elevation to the corner corroborates this supposition of previously standing water. It has been observed at other corners throughout the county that evidence of the previous presence of standing water yields a situation where ancient evidence such as a stone monument is not found.

The vertical section of rail fit with the local evidence of the corner in the form of the north-south roadway and the post on the east side of the road. The rail also fits reasonably well with the relative positions of proximate corners. The rail was held as marking the corner. The rail was removed and replaced with a Harrison monument in the same position. This corner was originally established as a wood post in 1820.



Kenneth E. Hedge
 Kenneth E. Hedge, County Surveyor

James S. Swift
 James S. Swift, IN LS 20200054
 January 31, 2018

Jackson Township

Section 23 T18N, R2W	Section 24 T18N, R2W
Section 26 T18N, R2W	Section 25 T18N, R2W

SECTION CORNER RECORD

BOONE COUNTY SURVEYOR'S OFFICE

SW 400-800

State Plane grid coordinates NAD83 (2011):
 North: 1724169.54 East: 3082642.75 (U.S. survey feet)

Type of monument: INDOT Type B monument
 Depth: flush with adjacent road surface

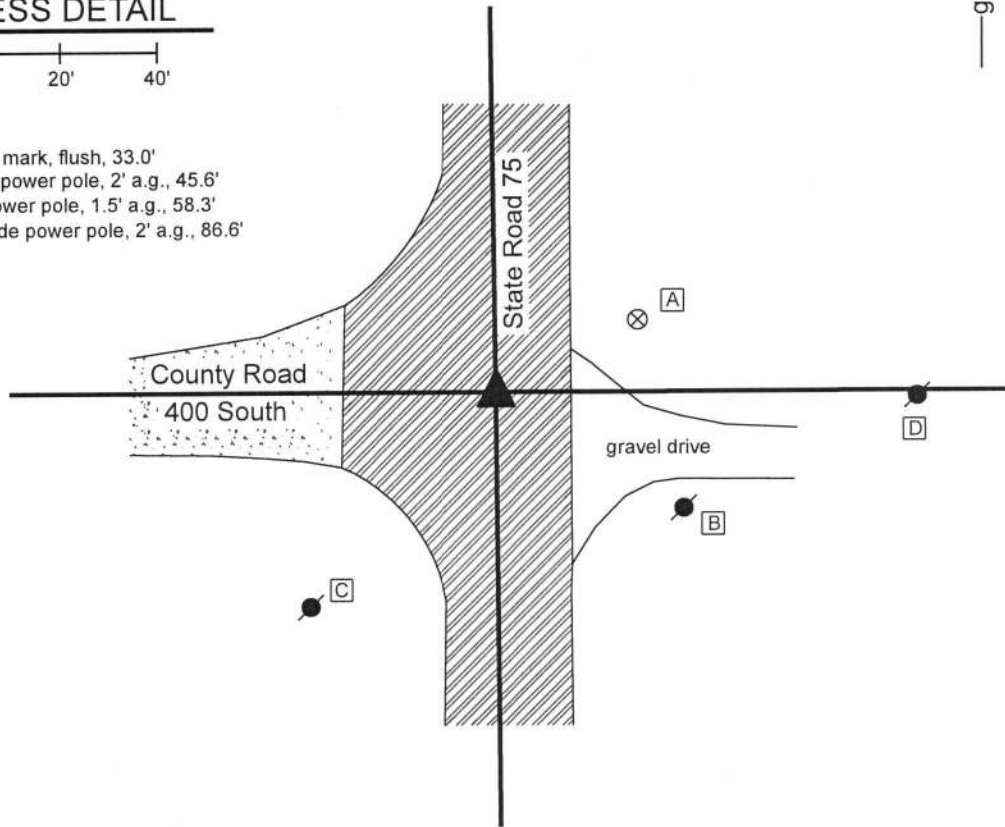
Indiana tie card references:
 IN02_T18NR2W22_80 IN02_T18NR2W23_72
 IN02_T18NR2W27_08 IN02_T18NR2W26_00



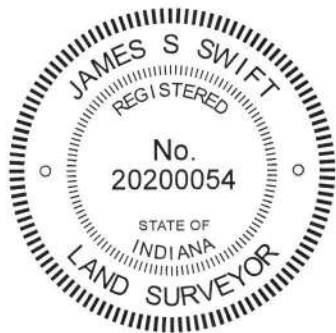
CORNER WITNESS DETAIL

SCALE 1" = 40'

- A - Boone County witness mark, flush, 33.0'
- B - Mag nail set in N. side power pole, 2' a.g., 45.6'
- C - Nail fnd in N.E. side power pole, 1.5' a.g., 58.3'
- D - Mag nail set in S.W. side power pole, 2' a.g., 86.6'



The INDOT Type B monument was found in place.
 A BCS tie card dated December, 2003 shows the corner to be a PK nail found in patch. In 2004 or later, INDOT replaced the nail with a Type B monument in the same position. Though the origin of the position of the monument is not known, it fits with local evidence in the form of the intersection of the existing roadways. This corner was not excavated, being in a state highway. The Type B monument is held as marking the corner.
 This corner was originally established as a wood post in 1820.



Kenneth E. Hedge
 Kenneth E. Hedge, County Surveyor

James S. Swift
 James S. Swift, IN LS 20200054
 March 13, 2019

Jackson Township

Section 22 T18N, R2W	Section 23 T18N, R2W
Section 27 T18N, R2W	Section 26 T18N, R2W

SECTION CORNER RECORD

SW 450-700

BOONE COUNTY SURVEYOR'S OFFICE

State Plane grid coordinates NAD83 (2011):

North: 1721556.30 East: 3087964.93 (U.S. survey feet)

Type of monument: Harrison, 4" disk 'Section Corner'

Depth: Three inches above adjacent ground

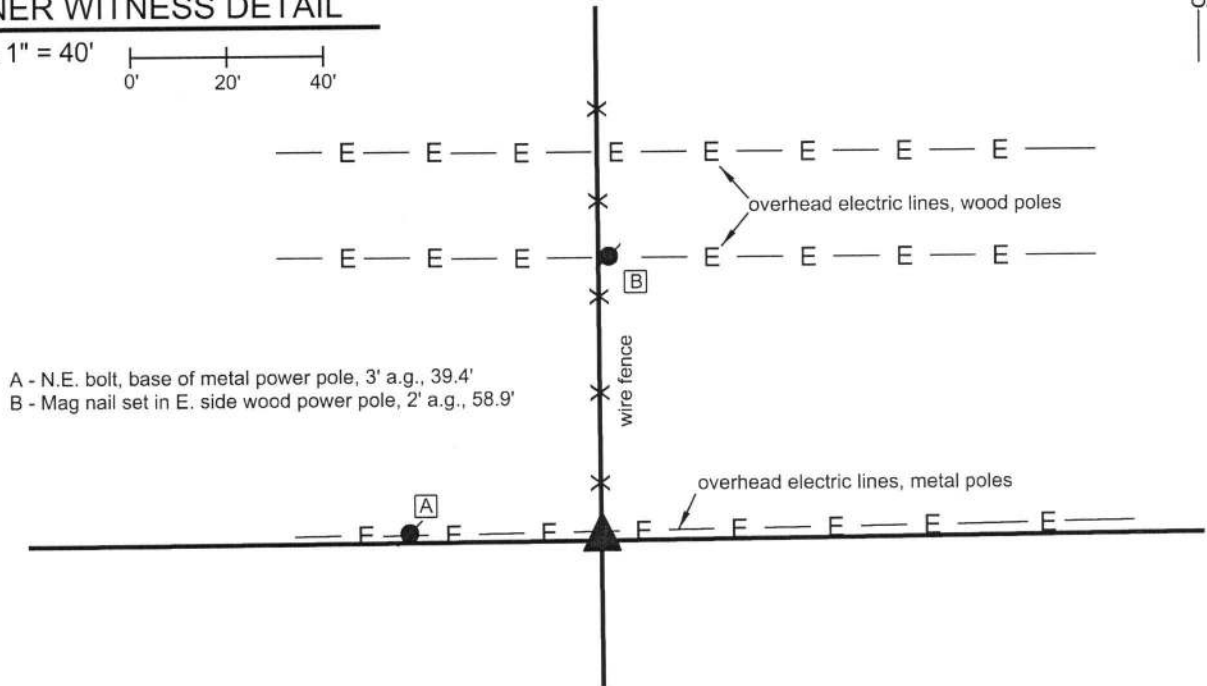
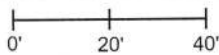
Indiana tie card references:

IN02_T18NR2W26_44 IN02_T18NR2W25_36



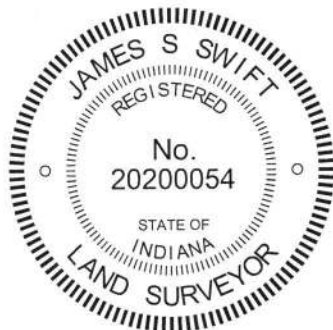
CORNER WITNESS DETAIL

SCALE 1" = 40'



A - N.E. bolt, base of metal power pole, 3' a.g., 39.4'
B - Mag nail set in E. side wood power pole, 2' a.g., 58.9'

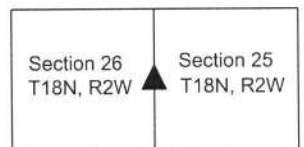
The Harrison monument was set in place of a rebar found. A BCS record dated January 24-25, 1878 states, with respect to this corner, "Reestablished by running lines. Set rock 21.17.8 + on top." A subsequent record dated June 1, 1881 notes "found corner." No recent BCS tie cards were found referencing this corner. Excavation was performed at this corner on October 19, 2018. A rebar bearing with a yellow plastic cap stamped "Dodge, SO288" was found at the southerly terminus of a fence to the north, in-line with an east-west field division. A wood corner post with fencing to the north and west was found in April, 2016. The position of the rebar indicates that it had been at the southwest edge of the post, approximately 0.8 foot southwest of the center of the post, as located in 2016. The post was not present in October, 2018. It is noted that a power line with metal poles was installed along the east-west half section lines in 2017 and it is believed that the installation of the power line included disruption of evidence along the east-west line. Excavation in the immediate vicinity of the rebar and position of the post revealed numerous rocks found at various depths, none of which matched the description of the stone set in 1878. The position of the rebar was accepted as the best available evidence of the corner. The rebar was held as marking the specific location of the corner. The rebar was removed and replaced with a Harrison monument in the same position. This corner was originally established as a wood post in 1820.



Kenneth E. Hedge
Kenneth E. Hedge, County Surveyor

James S. Swift
James S. Swift, IN LS 20200054
January 9, 2019

Jackson Township



SECTION CORNER RECORD

BOONE COUNTY SURVEYOR'S OFFICE

SW 450-800

State Plane grid coordinates NAD83 (2011):
 North: 1721530.63 East: 3082666.00 (U.S. survey feet)

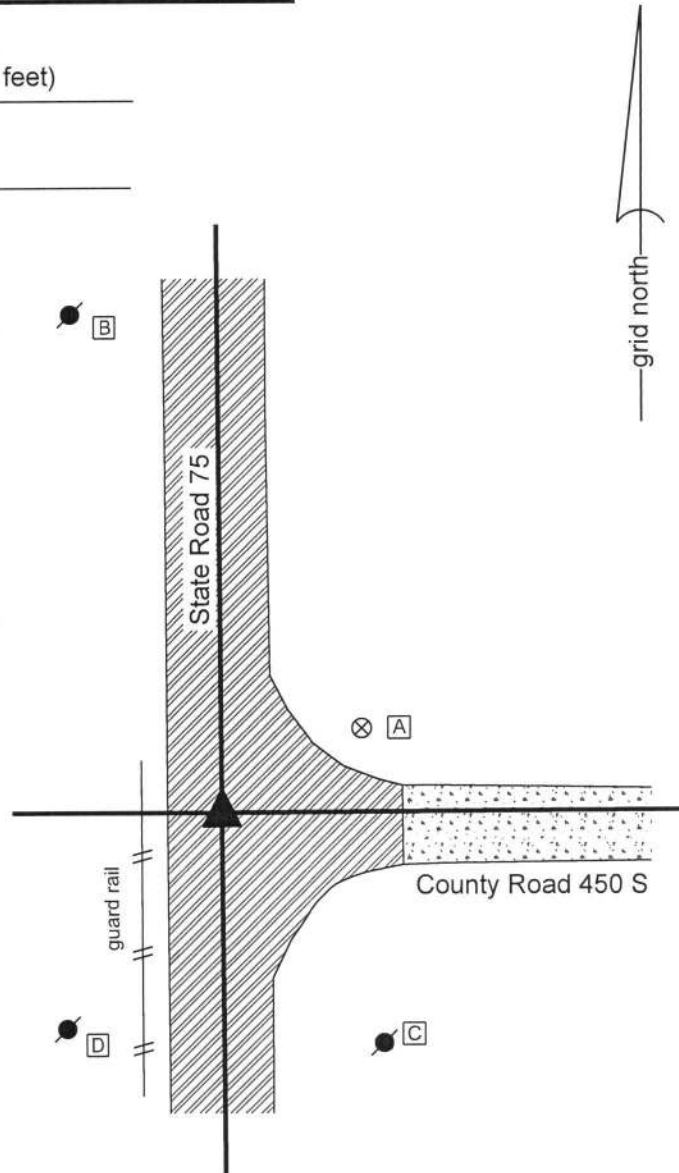
Type of monument: INDOT Type B Monument
 Depth: Flush with adjacent road surface

Indiana tie card references:
 IN02_T18NR2W27_44 IN02_T18NR2W26_36

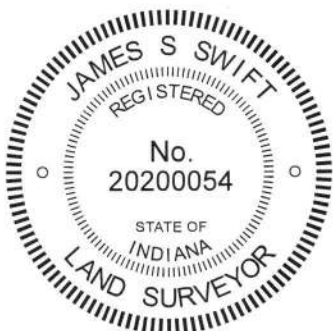
CORNER WITNESS DETAIL

SCALE 1" = 50'

- A - Boone County witness mark, flush, 42.3'
- B - Mag nail set in E. side power pole, 2' a.g., 135.3'
- C - Mag nail set in N. side power pole, 2' a.g., 72.9'
- D - Mag nail set in E. side power pole, 2' a.g., 68.7'



The INDOT Type B monument was found in place. A BCS tie card dated December, 2003 shows the corner to be a PK nail found. In 2004 or later, INDOT replaced the nail with a Type B monument in the same position. Though the origin of the position of the monument is not known, it fits with local evidence in the form of the intersection of the existing roadways. This corner was not excavated, being in a state highway. The Type B monument is held as marking the corner. This corner was originally established as a wood post in 1820.



Kenneth E. Hedge
 Kenneth E. Hedge, County Surveyor

James S. Swift
 James S. Swift, IN LS 20200054
 March 13, 2019

Jackson Township

