

SECTION CORNER RECORD

SW-400-100

BOONE COUNTY SURVEYOR'S OFFICE

State Plane grid coordinates NAD83 (2011):
North: 1724326.48 East: 3119633.20 (U.S. survey feet)

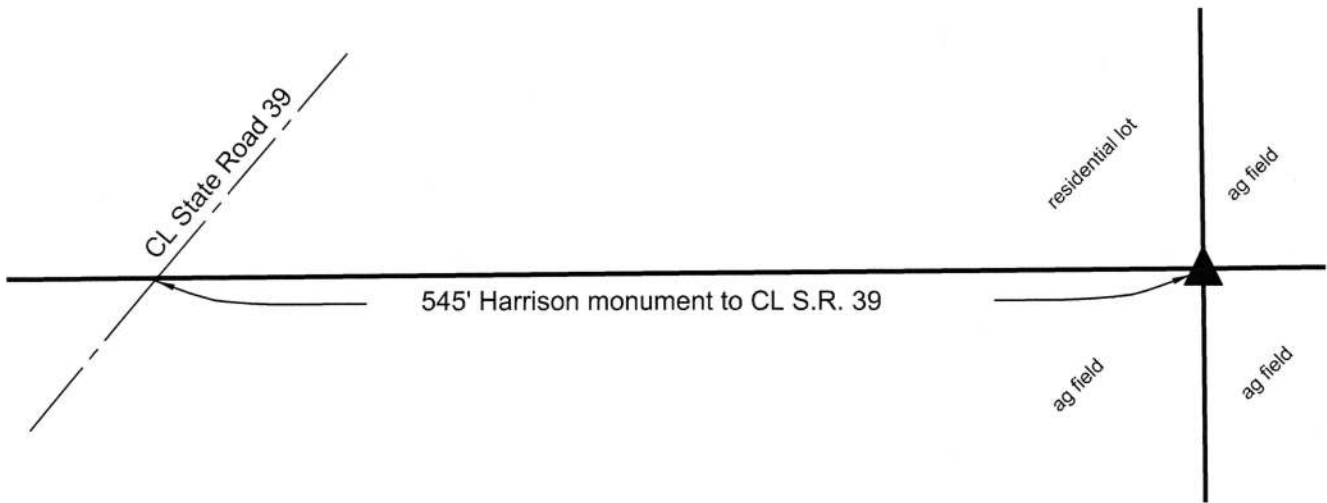
Type of monument: Harrison, 4" disk 'Section Corner'
Depth: One inch above adjacent ground

Indiana tie card references:
IN02_T18NR1W23_80 IN02_T18NR1W24_72
IN02_T18NR1W25_08 IN02_T18NR1W25_00



CORNER WITNESS DETAIL

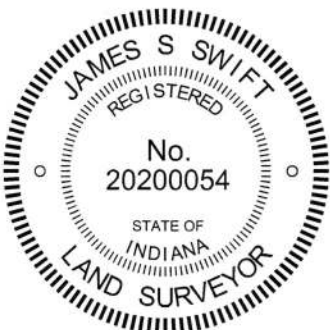
SCALE 1" = 100'



The Harrison monument was set in place of a collection of numerous small rocks found below grade. A BCS record dated October 12-16, 1857 states, with respect to this corner, "Reestablished. Rock 15x20." No recent BCS tie cards were found referencing this corner.

This office assisted Deckard Engineering/Surveying with section corner perpetuation in this vicinity during November, 2015. The corner 1/2 mile south of the subject corner (SW 150-400) was excavated and monumented by this office at that time. The subject corner was excavated by Deckard in the same time period. Calculating the position relative to proximate corners and relevant deed descriptions and evidence, the Deckard crew found substantial evidence of the corner in the form of a grouping of numerous small rocks and held the position of the corner. That position for the corner was confirmed by this office. The position of the corner held by Deckard works well with proximate corners and local evidence in the form of the east-west field division and remnants of fence to the east and west as well as evidence of occupation and remnants of fence to the north. A Harrison monument was set at that position on October 13, 2016. The Deckard survey is recorded as Instrument 201600002449 in the Office of the Boone County Recorder.

This corner was originally established as a wood post in June, 1820.



Kenneth E. Hedge, County Surveyor

James S. Swift, IN LS 20200054
March 23, 2017

Harrison Township

Section 23 T18, R1W	Section 24 T18N, R1W
Section 26 T18N, R1W	Section 25 T18N, R1W

SECTION CORNER RECORD

BOONE COUNTY SURVEYOR'S OFFICE

SW 450-100

State Plane grid coordinates NAD83 (2011):

North: 1721688.87 East: 3119661.48 (U.S. survey feet)

Type of monument: Harrison, 4" disk 'Section Corner'

Depth: One inch below adjacent road surface

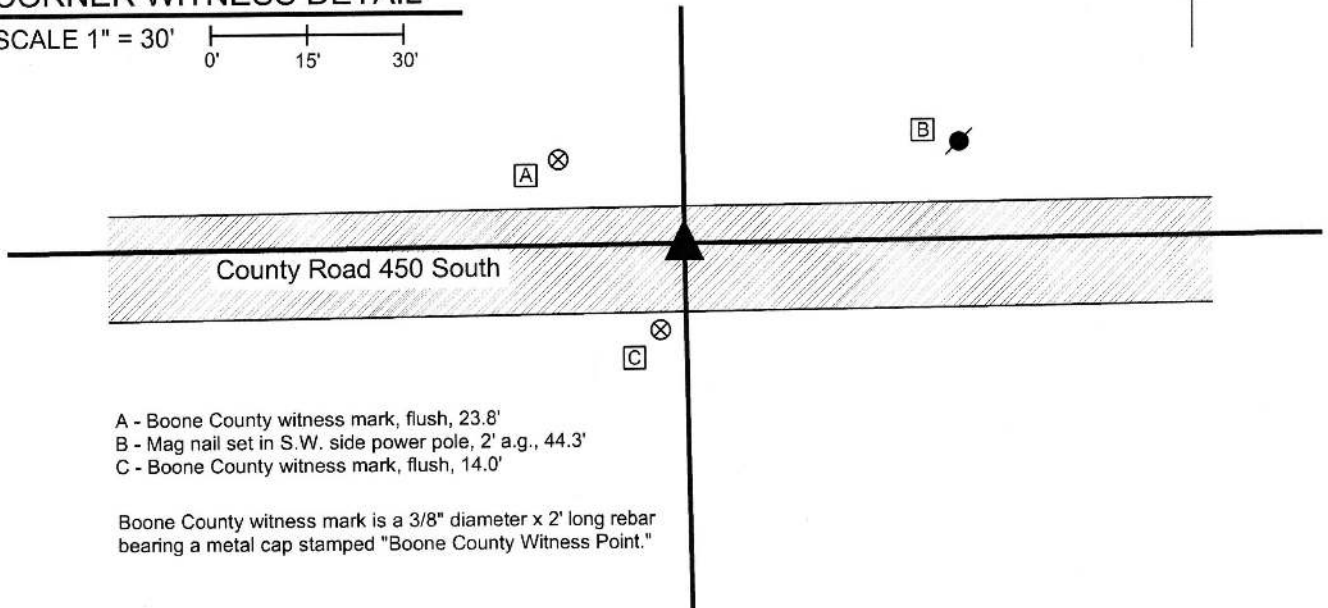
Indiana tie card references:

IN02_T18NR1W26_44 IN02_T18NR1W25_36



CORNER WITNESS DETAIL

SCALE 1" = 30'



- A - Boone County witness mark, flush, 23.8'
- B - Mag nail set in S.W. side power pole, 2' a.g., 44.3'
- C - Boone County witness mark, flush, 14.0'

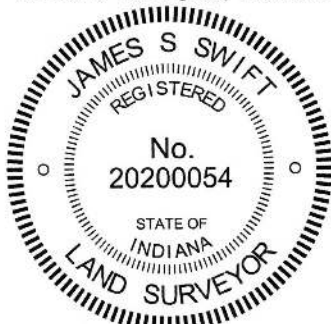
Boone County witness mark is a 3/8" diameter x 2' long rebar bearing a metal cap stamped "Boone County Witness Point."

The Harrison monument was set over a stone found.

A BCS record dated October 12-16, 1857 states, with respect to this corner, "Reestablished. Rock 12x22." The same record also calls for a stone set at the center of section 25. A subsequent record, dated April 30, 1895, established a position for a title corner (termed "10") which is 4 chains to the east of the subject corner.

A BCS record dated May 5, 1992 shows the corner as a railroad spike found.

This corner was excavated on November 25, 2015. Prior to excavation, a railroad spike was found in the center of County Road 450 South. The spike was accepted as most likely representing the monument shown on the 1992 tie card, though no ties remain to prove this. At the corner, no evidence of occupation was present to help define the North-South section lines. However, an ancient wood post and associated field division were found providing evidence of the title corner "10." Analysis of the relative positions of the railroad spike with evidence of surrounding lines and corners clearly indicated that the spike was situated too far east to actually mark the corner. A probable position for the subject corner was computed with respect to this evidence and excavation was centered on this probable position. Excavation revealed the stone described in the 1857 record at a point 2.9 feet north and 6.5 feet west of the railroad spike. The stone was found at 14 inches deep. It was vertical with a distinct high point. With 14 inches of the top of the stone exposed, the stone measured 12 inches E-W by 5 inches N-S and remained entirely stable. Probing on the south side of the stone indicated that it was approximately the record height of 22 inches. The stone was embedded in the clay layer below the road bed, with the top of the rock protruding into the bottom of the road bed by 2 inches, more or less. The stone was accepted as being the same monument called for in the 1857 record and was held as marking the corner. The stone was left in place and a Harrison monument was set over the top, high point of the rock. The railroad spike was no situated within the original area of excavation, hence was not removed. The position of the wood post providing evidence of corner "10" fit well with the position of the stone. This corner was originally established as a wood post in 1820.

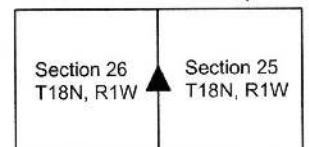


Kenneth E. Hedge
 Kenneth E. Hedge, County Surveyor

James S. Swift
 James S. Swift, IN LS 20200054

March 28, 2016

Harrison Township



SECTION CORNER RECORD

BOONE COUNTY SURVEYOR'S OFFICE

SW 500-100

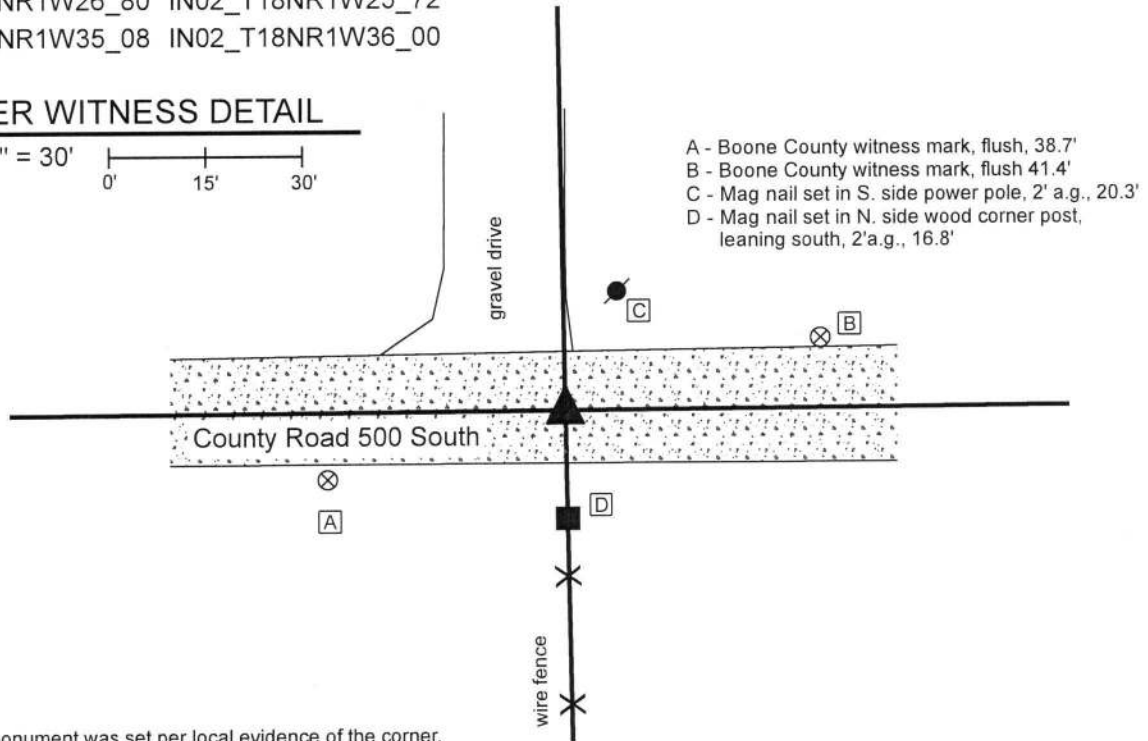
State Plane grid coordinates NAD83 (2011):
 North: 1719043.73 East: 3119704.75 (U.S. survey feet)

Type of monument: Harrison, 4" disk 'Section Corner'
 Depth: Six inches below adjacent gravel road surface

Indiana tie card references:
 IN02_T18NR1W26_80 IN02_T18NR1W25_72
 IN02_T18NR1W35_08 IN02_T18NR1W36_00

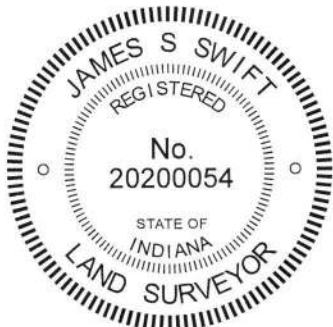
CORNER WITNESS DETAIL

SCALE 1" = 30'



The Harrison monument was set per local evidence of the corner. A BCS record dated September 8-12, 1837 (date noted in book as more likely to be 1857) states, with respect to this corner, "Reestablished. Set Rock 10x14." No recent BCS tie cards were found referencing this corner. A survey by Ronald E. Wharry, LS #S0420 recorded as Instrument 2017007960 in the Office of the Boone County Recorder shows the corner as being 18.00 feet north of a headpost on the south side of County Road 500 South but shows no monument set or found at the corner.

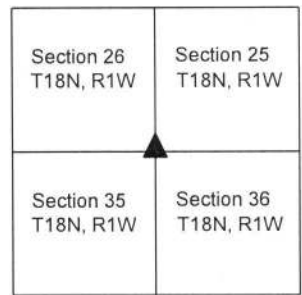
This corner was excavated on April 22, 2019. Prior to excavation, no metal or other artificial monuments were found marking the corner. The estimated position of the corner was established per the evidence of the physical roadway of County Road 500 South and an ancient fence bearing south from said County Road. The intersection point of the road and fence fits well with the relative positions of surrounding corners and evidence. Excavation was centered on a point 1 rod (16.5 feet) north of the ancient wood end post which marks the northerly terminus of said north-south fence. Excavation of an area extending 5 feet east, 5 feet west, 3.5 feet north and 3.5 feet south of the estimated position of the corner revealed no further evidence of the corner. The road bed consists of 4 inches of a bituminous material below which is 4 inches of modern #53 road stone, below which is another 4 inches of older gravel. The presence of the modern road stone indicates substantial grading / road improvement in the recent past. The descriptions for the adjacent properties are in the form of aliquot parts descriptions. Hence, the physical evidence of the roadway and fence were held as controlling for establishing the corner. It has been observed at numerous other corners throughout the county that the most reliable dimension for using accessory evidence such as an end post on the side of a road to discover ancient evidence of a corner is that of 1 rod or 16.5 feet. This dimension was held for purposes of establishing this corner. The corner was established at 1 rod north of the base of the post at the point where the post is flush with ground level and a Harrison monument was set at this position. This position fit very well with approximate center of the physical roadway. Up to 1.5 feet of uncertainty north-south is associated unmonumented position shown on the Wharry Survey. This corner was originally established as a wood post in 1820.



Kenneth E. Hedge
 Kenneth E. Hedge, County Surveyor

James S. Swift
 James S. Swift, IN LS 20200054
 May 22, 2019

Harrison Township



SECTION CORNER RECORD

SW 500-200

BOONE COUNTY SURVEYOR'S OFFICE

State Plane grid coordinates NAD83 (2011):

North: 1719012.77 East: 3114389.63 (U.S. survey feet)

Type of monument: Harrison, 4" disk 'Section Corner'

Depth: Four inches above adjacent ground

Indiana tie card references:

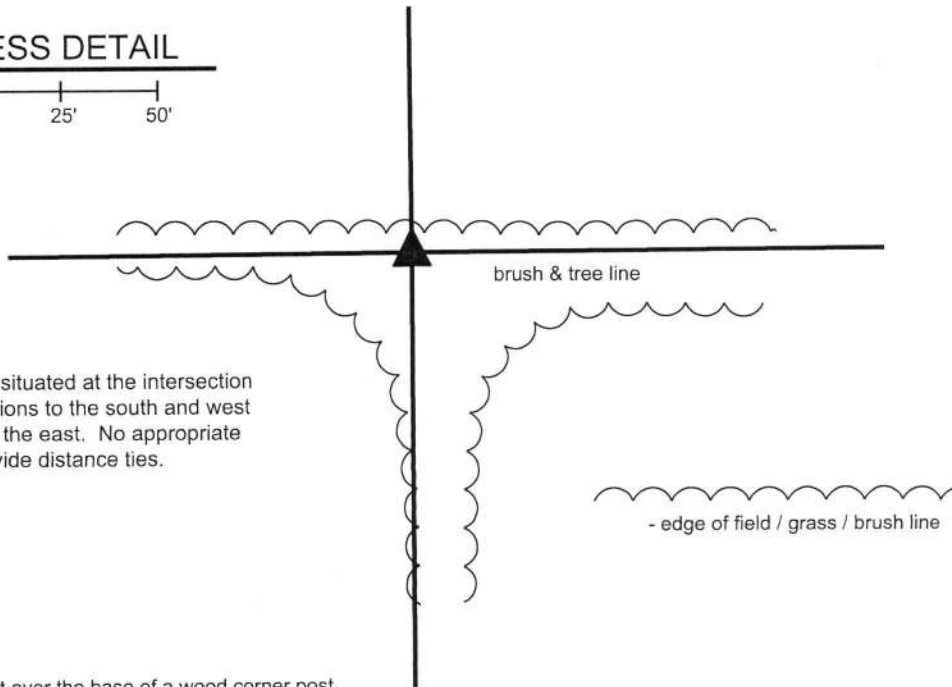
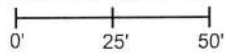
IN02_T18NR1W27_80 IN02_T18NR1W26_72

IN02_T18NR1W34_08 IN02_T18NR1W35_00



CORNER WITNESS DETAIL

SCALE 1" = 50'

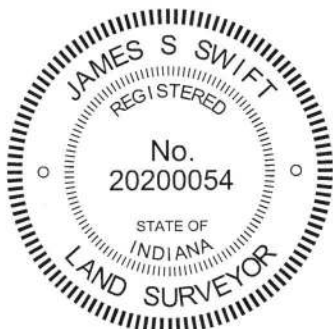


The Harrison monument is situated at the intersection of brush lines and field divisions to the south and west and a brush and tree line to the east. No appropriate objects are available to provide distance ties.

The Harrison monument was set over the base of a wood corner post.

No specific descriptions of this corner were found in the BCS Surveyor's Record beyond the original establishment of the corner as a wood post in 1820. The corner is referenced as the terminal point for measurements in an entry of April 20, 1874. No recent BCS tie cards were found referencing the corner. A survey for INDOT by Frank T. Luse, LS #20000223, recorded in Survey 15, pages 52-53 in the Office of the Boone County Recorder, shows the corner as "post base." No other recorded surveys were found which reference the corner.

This corner was excavated on April 2, 2019. Prior to excavation, in April 2016, a wood corner post had been observed at the corner, fallen on the ground. On April 2, 2019, the post was found yet lying on the ground amidst a variety of rocks and rubble, in-line with field divisions to the east and west and at the west edge of a wide, humped field division to the south. The position of the post, as it had stood prior to falling over, was confirmed by physically standing up the post which was yet attached to wires to the east and west. This position was found to agree well with the 2016 observation and the position shown on the Luse survey. Excavation in the vicinity of the post revealed numerous rocks, none of which could be confirmed as being a purposely set corner stone. The base of the post was found at 18 inches deep. It is noted that the position of the post is slightly west of what appears to be an old fence hump to the south, but the post itself had not only fencing attached to the east and west but evidence fencing cut-off to the north and south. No evidence of another post was found in line with the hump to the south. The position of the post works well with the measurement references from 1874 and the relative positions of a stone at the corner 1/2 mile west (see BCS corner SW-500-250) and a wood corner post found providing evidence of the quarter-quarter corner between said stone and the subject corner. The post was accepted as the best available evidence of the corner. The fencing was cut from the post and the top section of the post was placed nearby, amidst the various rubble. A Harrison monument was set directly over the base of the post on April 17, 2019.



Kenneth E. Hedge, County Surveyor

James S. Swift, IN LS 20200054
May 8, 2019

Harrison Township

Section 27 T18N, R1W	Section 26 T18N, R1W
Section 34 T18N, R1W	Section 35 T18N, R1W