

SECTION CORNER RECORD

SE 400-400

BOONE COUNTY SURVEYOR'S OFFICE

State Plane grid coordinates NAD83 (NSRS 2007):

North: 1724913.90 East: 3145969.14 (U.S. survey feet)

Type of monument: Harrison, 4" disk 'Section Corner'

Depth: flush with adjacent ground

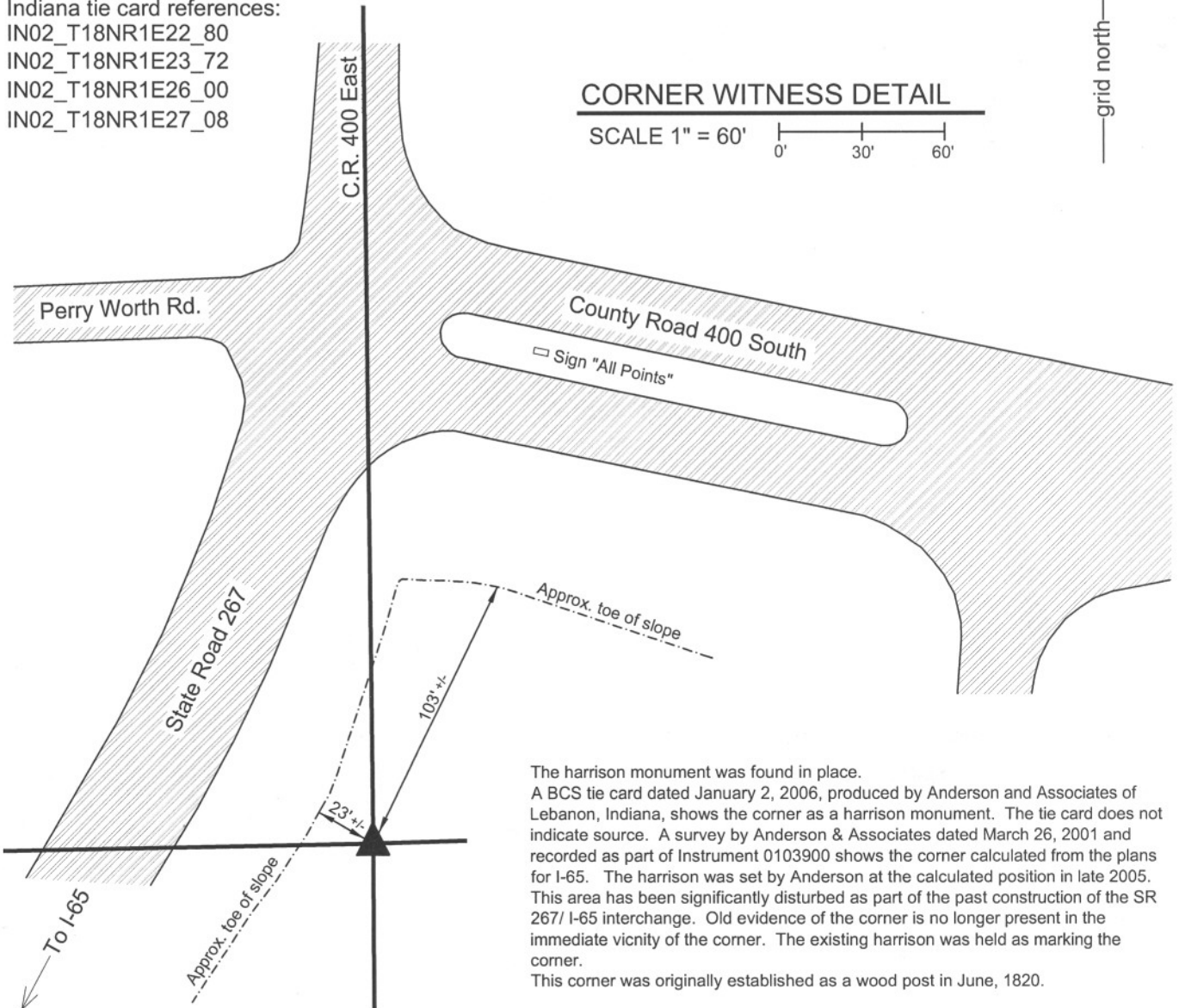
Indiana tie card references:

IN02_T18NR1E22_80

IN02_T18NR1E23_72

IN02_T18NR1E26_00

IN02_T18NR1E27_08



The harrison monument was found in place. A BCS tie card dated January 2, 2006, produced by Anderson and Associates of Lebanon, Indiana, shows the corner as a harrison monument. The tie card does not indicate source. A survey by Anderson & Associates dated March 26, 2001 and recorded as part of Instrument 0103900 shows the corner calculated from the plans for I-65. The harrison was set by Anderson at the calculated position in late 2005. This area has been significantly disturbed as part of the past construction of the SR 267/ I-65 interchange. Old evidence of the corner is no longer present in the immediate vicinity of the corner. The existing harrison was held as marking the corner. This corner was originally established as a wood post in June, 1820.



Kenneth E. Hedge
 Kenneth E. Hedge, County Surveyor

James S. Swift
 James S. Swift, IN LS 20200054
 March 11, 2009

Perry Twp Worth Twp

Section 22 T18N, R1E	Section 23 T18N, R1E
Section 27 T18N, R1E	Section 26 T18N, R1E

SECTION CORNER RECORD

BOONE COUNTY SURVEYOR'S OFFICE

SE 400-450

State Plane grid coordinates NAD83 (NSRS 2007):

North: 1724993.33 East: 3148623.80 (U.S. survey feet)

Type of monument: Harrison, 4" disk 'Section Corner'

Depth: Flush with adjacent road surface

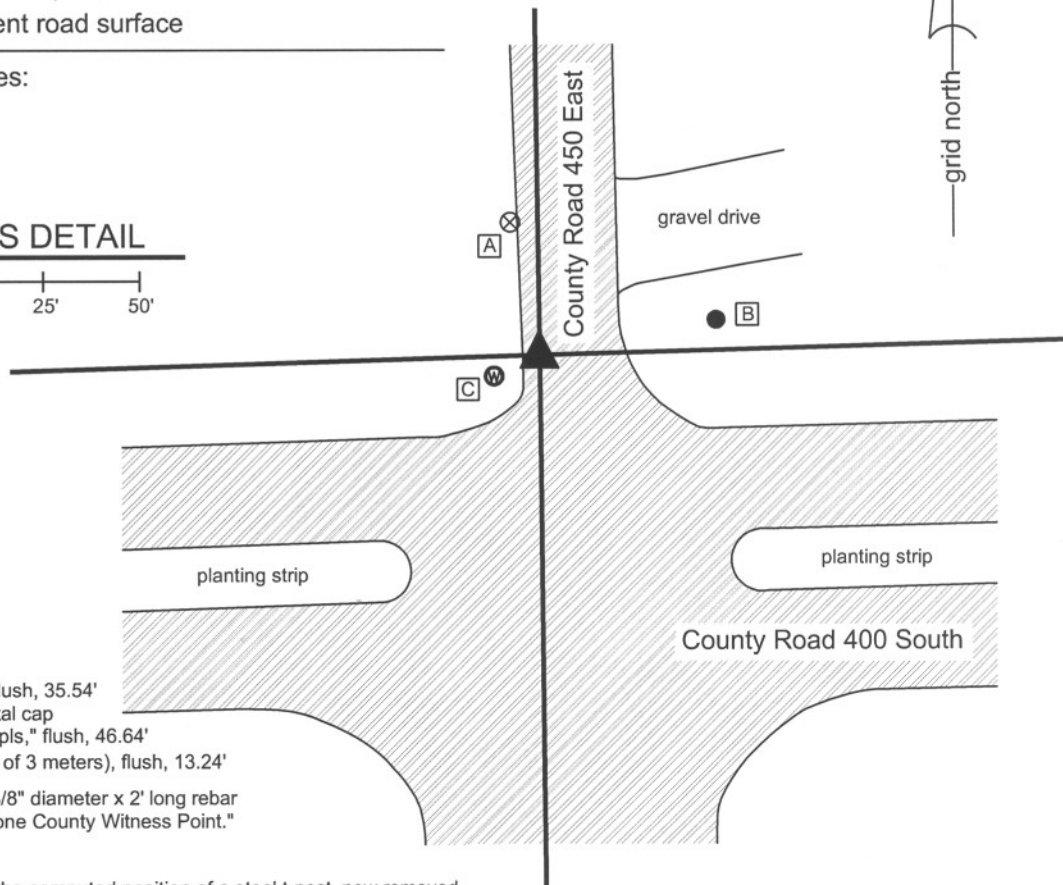
Indiana tie card references:

IN02_T18NR1E23_76

IN02_T18NR1E26_04

CORNER WITNESS DETAIL

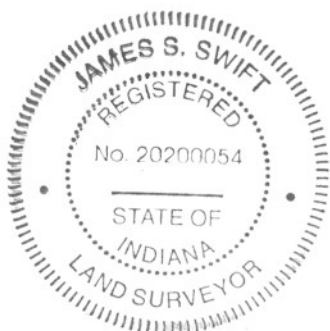
SCALE 1" = 50'



- A - Boone County witness mark, flush, 35.54'
- B - 5/8" rebar in concrete with metal cap stamped "Amer Cons Engr Indpls," flush, 46.64'
- C - Water meter, top center (S.W. of 3 meters), flush, 13.24'

Boone County witness mark is a 3/8" diameter x 2' long rebar bearing a metal cap stamped "Boone County Witness Point."

The harrison monument was set at the computed position of a steel t-post, now removed. November 28, 1870 states "Reestablished from stump of SW Elm. Set a Rock 14,12,11 marked +." No recent BCS tie cards were found referencing this corner. Significant excavation was not performed at this corner. It is known that significant construction has occurred at this site recently as part of the Anson development and more specifically the construction of County Road 400 South and the relocation of County Road 450 East at its intersection with C.R. 400 South. It is also known that a water main was installed in the immediate vicinity of the corner and it is considered unlikely that the record stone or other evidence of the corner survived the land disturbing activities. Preliminary surveys to the Anson development by American Consulting Engineers demonstrate a steel t-post found and held as the best available evidence of the corner. Given the disturbance of the area subsequent to those surveys, the position of the t-post, now removed, was held as the position of the corner for this record. The position of the t-post was computed with respect to the relative positions of found monuments which have not been disturbed and which are shown on surveys by American Consulting Engineers. Numerous surveys have been reconstructed to give an overall picture of the Anson area prior to construction. Particularly relevant to the subject corner of this record are surveys recorded in Survey Book 8, pages 28 and 42 in the Office of the Boone County Recorder. It is noted that these two surveys were analyzed in conjunction with numerous other surveys by the same company and were not treated as independent documents, but as part of a larger picture. The computed position is influenced by the relative position of some monuments which are not shown on the two referenced surveys, but are shown on other similar recorded documents. Information about the geodetic control network underlying the various Anson surveys was provided to this office by American Consulting Engineers and was also used in the computation of this and other corners. Overall uncertainties of approximately 0.2 foot may be associated with the relative positions of found monuments in comparison with the published locations throughout the Anson area. This corner was originally established as a wood post in June, 1820.



Kenneth E. Hedge
Kenneth E. Hedge, County Surveyor

James S. Swift
James S. Swift, IN LS 20200054

July 14, 2010

Worth Twp

Section 23
T18N, R1E

Section 26
T18N, R1E

SECTION CORNER RECORD

SE 400-500

BOONE COUNTY SURVEYOR'S OFFICE

State Plane grid coordinates NAD83 (NSRS 2007):

North: 1725066.53 East: 3151280.00 (U.S. survey feet)

Type of monument: Harrison, 4" disk 'Section Corner'

Depth: One inch below adjacent road surface

Indiana tie card references:

IN02_T18NR1E23_80 IN02_T18NR1E24_72

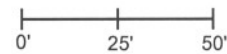
IN02_T18NR1E25_00 IN02_T18NR1E26_08

The harrison monument was set in the computed position of a rebar and in the immediate vicinity of a disturbed stone found.

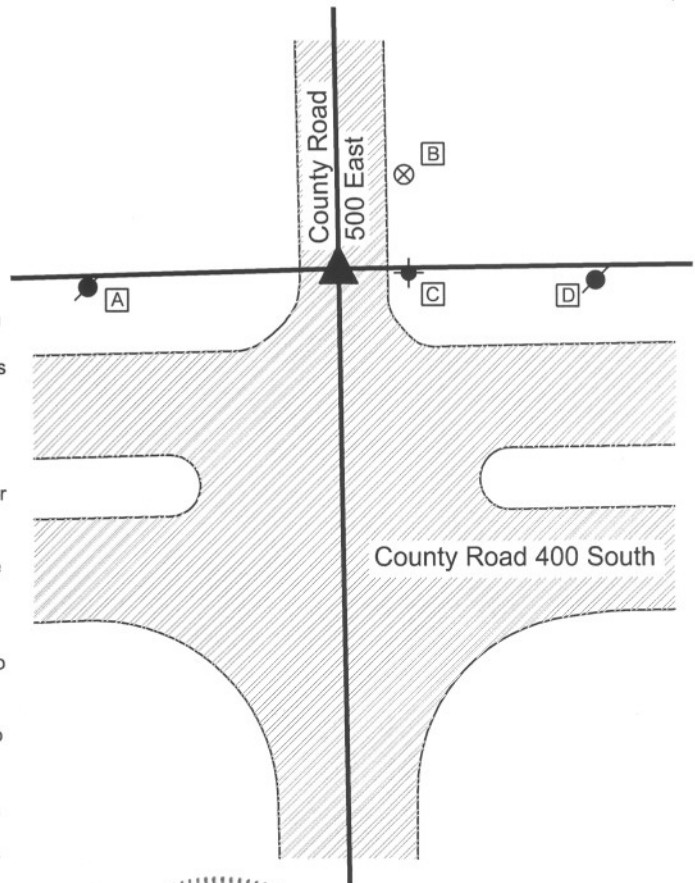
A BCS record of June 17, 1882 states "Reestablished from stumps Set Rock 13,9,5 1/2 +." A BCS tie card dated June 10, 1991 shows the corner as a "1 inch rebar found 0.3' below surface in line w/ W. fence." Although this significant construction has occurred recently in the vicinity of this corner as part of the Anson development and more specifically the construction of County Road 400 South, preliminary excavation on July 23, 2009 indicated that the old road bed was not entirely removed below this corner and the possibility that the record stone was in place merited further excavation. Full excavation occurred on July 28, 2009. Prior to excavation the position for the rebar shown on the 1991 record had been computed by means of the relative positions of other monuments shown on preliminary surveys to the Anson development by American Consulting Engineers. Please refer to the record for the quarter corner to the west, SE-400-450, for details about the computation of the position of corners shown on surveys of the Anson development. Excavation revealed the cross section of the road in this area is 5 inches of new asphalt over 5 inches of modern #53 road stone, under which approximately 8 inches of the base of the old road bed still exists. The rebar was not found and was apparently removed during construction. The record stone was found at the bottom of the road bed. As originally found, the stone was at a depth of approximately 19 inches, and measured 13 inches N-S by 5 1/2 inches E-W by 9 inches tall. A clear and distinct "+" was visible at the north end of the stone. It appeared that the stone was lying on its side and had been knocked over from the south. During the excavation of other corners, it has been observed that in the latter half of the 1800s field crews from this office appear to have generally followed the procedure of setting a single stone, or the the top stone if multiple stones were set, in a vertical orientation with the etched "+" either on top, or if on the side, generally noted as such. Almost every stone found from that era is also noted to be at the bottom of the old road bed or, most often, protruding 2 to 4 inches out of the clay layer and into the road bed. Comparing the orientation of this stone with that of previous, similar stones found, this stone most definitely appeared to be lying on its side. The observation of a break in the stone on the edge which would have been the south edge prior to being knocked over, is accepted as further evidence of the the likelihood that the stone was hit on the south side by a piece of machinery and pushed over towards the north. Standing the stone up, as it may have been prior to being knocked over, the etched "+" is on the top and the top of the stone is at 15 inches deep, which would have put the stone protruding approximately 3 inches out of the clay layer and into the bottom of the road bed, and the stone is situated with a wide base at the bottom, tapering slightly towards the top. When stood up, the stone was approximately 8 inches north of the computed position for the rebar. Although it was apparent that the stone had been knocked over from the south, it was not clear whether its overall position had been compromised. It is entirely possible that the stone was pushed to the north as it was being knocked over, which indicates that the position of the rebar may be just as valid as the position of the stone as originally found. Given the clear disturbance of the stone, the immediate proximity of the position of the rebar to the stone, and the acceptance of the rebar for previous surveys, including the Anson Surveys and the 1991 tie card, the position of the rebar was held as marking the corner. The stone was removed and the harrison monument was set at the computed position of the rebar. This corner was originally established as a wood post in June, 1820.

CORNER WITNESS DETAIL

SCALE 1" = 50'



- A - Boone County witness mark, flush, 29.87'
 - B - Mag nail set in E. side power pole, 2.0' a.g., 63.0'
 - C - Fire hydrant, N.W. base bolt, 17.30'
 - D - Mag nail set in N.W. side power pole, 65.4'
- Boone County witness mark is a 3/8" diameter x 2' long rebar bearing a metal cap stamped "Boone County Witness Point."



Worth Township

Section 23 T18N, R1E	Section 24 T18N, R1E
Section 26 T18N, R1E	Section 25 T18N, R1E

Kenneth E. Hedge
 Kenneth E. Hedge, County Surveyor

James S. Swift
 James S. Swift, IN LS 20200054

July 14, 2010

PHOTOGRAPHIC DOCUMENTATION

Date of photography: July 28, 2009

View of the stone as first exposed.



The stone removed from the road bed and situated in the orientation at which it was found.



The stone stood up in the orientation at which it was most likely originally set, with the etched mark on top. View from the east, looking west along the section line and north line of C.R. 400 South.



For details and documentation, refer to related sheet "Section Corner Record."

SECTION CORNER RECORD

SE 450-400

BOONE COUNTY SURVEYOR'S OFFICE

State Plane grid coordinates NAD83 (NSRS 2007):

North: 1722264.49 East: 3145980.96 (U.S. survey feet)

Type of monument: Harrison, 4" disk 'Section Corner'

Depth: Three inches above adjoining ground.

Indiana tie card references:

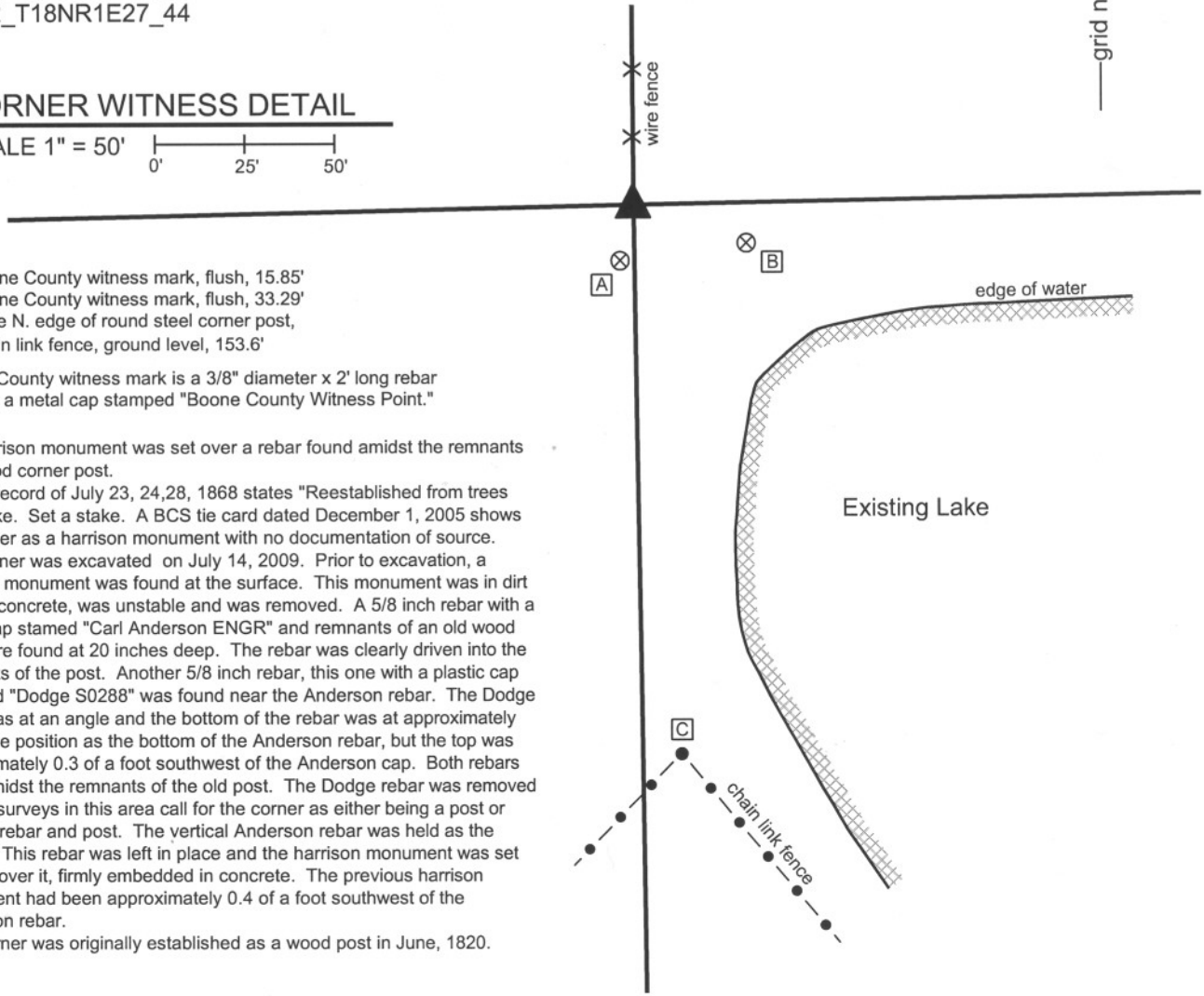
IN02_T18NR1E26_36

IN02_T18NR1E27_44



CORNER WITNESS DETAIL

SCALE 1" = 50'



- A - Boone County witness mark, flush, 15.85'
- B - Boone County witness mark, flush, 33.29'
- C - base N. edge of round steel corner post, chain link fence, ground level, 153.6'

Boone County witness mark is a 3/8" diameter x 2' long rebar bearing a metal cap stamped "Boone County Witness Point."

The harrison monument was set over a rebar found amidst the remnants of a wood corner post.

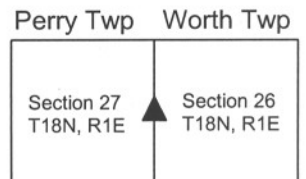
A BCS record of July 23, 24,28, 1868 states "Reestablished from trees and stake. Set a stake. A BCS tie card dated December 1, 2005 shows the corner as a harrison monument with no documentation of source. This corner was excavated on July 14, 2009. Prior to excavation, a harrison monument was found at the surface. This monument was in dirt with no concrete, was unstable and was removed. A 5/8 inch rebar with a metal cap stamed "Carl Anderson ENGR" and remnants of an old wood post were found at 20 inches deep. The rebar was clearly driven into the remnants of the post. Another 5/8 inch rebar, this one with a plastic cap stamped "Dodge S0288" was found near the Anderson rebar. The Dodge rebar was at an angle and the bottom of the rebar was at approximately the same position as the bottom of the Anderson rebar, but the top was approximately 0.3 of a foot southwest of the Anderson cap. Both rebars were amidst the remnants of the old post. The Dodge rebar was removed. Private surveys in this area call for the corner as either being a post or being a rebar and post. The vertical Anderson rebar was held as the corner. This rebar was left in place and the harrison monument was set directly over it, firmly embedded in concrete. The previous harrison monument had been approximately 0.4 of a foot southwest of the Anderson rebar.

This corner was originally established as a wood post in June, 1820.



Kenneth E. Hedge
Kenneth E. Hedge, County Surveyor

James S. Swift
James S. Swift, IN LS 20200054
July 14, 2010



SECTION CORNER RECORD

SE 450-500

BOONE COUNTY SURVEYOR'S OFFICE

State Plane grid coordinates NAD83 (NSRS 2007):

North: 1722411.46 East: 3151322.51 (U.S. survey feet)

Type of monument: Harrison, 4" disk 'Section Corner'

Depth: One inch below adjacent road surface

Indiana tie card references:

IN02_T18NR1E25_36

IN02_T18NR1E26_44

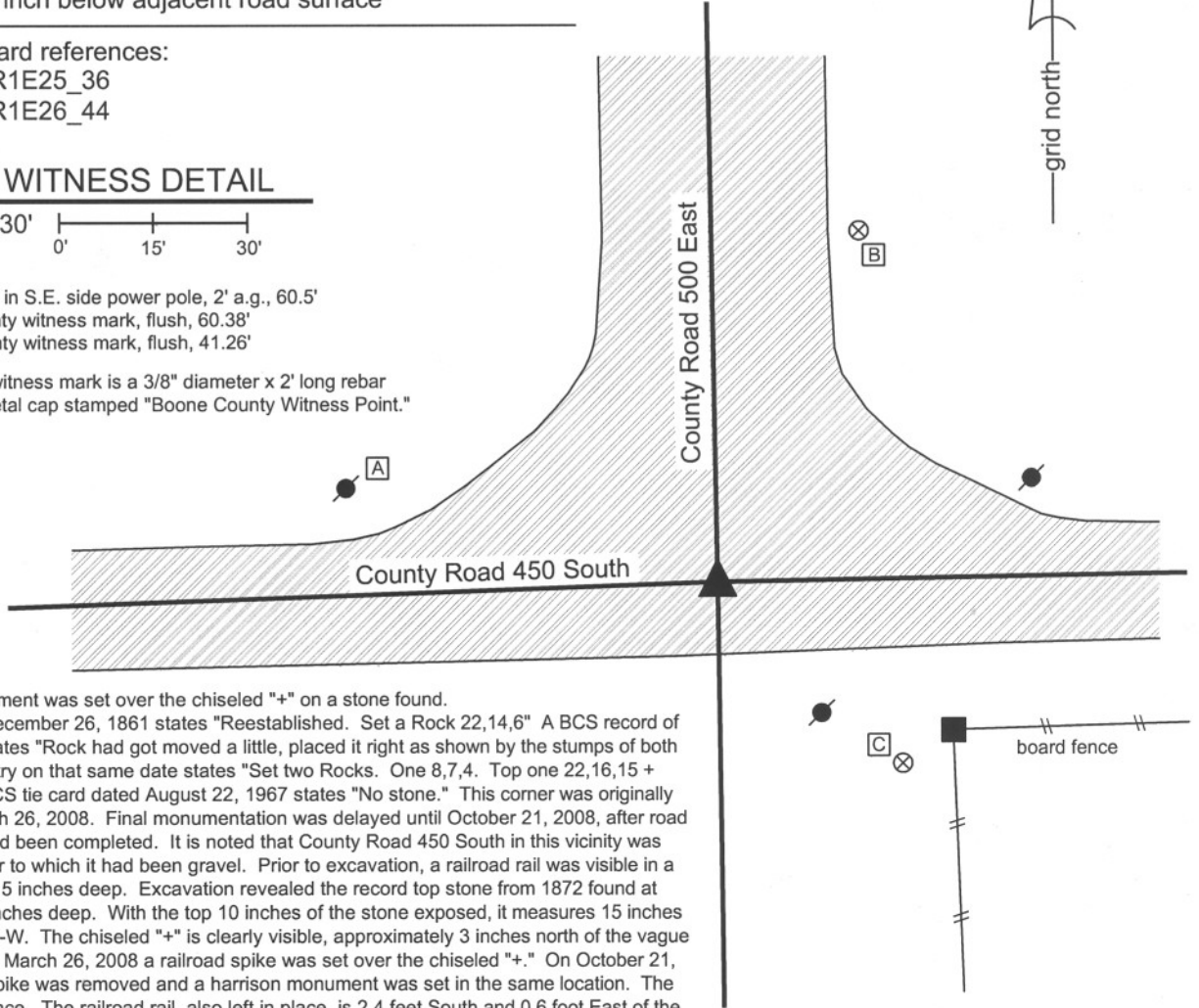
CORNER WITNESS DETAIL

SCALE 1" = 30'




- A - Mag nail set in S.E. side power pole, 2' a.g., 60.5'
- B - Boone County witness mark, flush, 60.38'
- C - Boone County witness mark, flush, 41.26'

Boone County witness mark is a 3/8" diameter x 2' long rebar bearing a metal cap stamped "Boone County Witness Point."



The harrison monument was set over the chiseled "+" on a stone found. A BCS record of December 26, 1861 states "Reestablished. Set a Rock 22,14,6" A BCS record of October 3, 1872 states "Rock had got moved a little, placed it right as shown by the stumps of both trees." Another entry on that same date states "Set two Rocks. One 8,7,4. Top one 22,16,15 + (see above)." A BCS tie card dated August 22, 1967 states "No stone." This corner was originally excavated on March 26, 2008. Final monumentation was delayed until October 21, 2008, after road work in the area had been completed. It is noted that County Road 450 South in this vicinity was paved in 2007, prior to which it had been gravel. Prior to excavation, a railroad rail was visible in a hole in the asphalt, 5 inches deep. Excavation revealed the record top stone from 1872 found at approximately 10 inches deep. With the top 10 inches of the stone exposed, it measures 15 inches N-S by 16 inches E-W. The chiseled "+" is clearly visible, approximately 3 inches north of the vague top, high point. On March 26, 2008 a railroad spike was set over the chiseled "+." On October 21, 2008 the railroad spike was removed and a harrison monument was set in the same location. The stone was left in place. The railroad rail, also left in place, is 2.4 feet South and 0.6 foot East of the chiseled "+" and harrison. The 1967 record does not mention the rail, though it is likely that it was set at the time of the creation of that tie card. The statement "no stone" on that card is clearly erroneous, as the stone was present, less than 1 foot deep in gravel at the approximate center of the intersection. It is not known why the 1872 record seems to refer to placing the stone right and also refers to setting new rocks with different dimensions. It is clear that the stone found is the record stone described in the second entry of the October 3, 1872 record. It is also noted that this position was established that day by the "stumps of both trees." The original corner was set as a wood post on June 9, 1820, with references to a 24 inch diameter hickory tree and an 18 inch diameter hickory tree. The stone is considered the best available evidence of the original location of the corner.

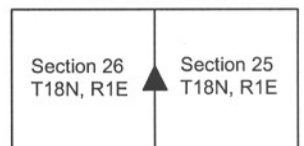

 Kenneth E. Hedge, County Surveyor


 James S. Swift, IN LS 20200054

March 11, 2009



Worth Township



PHOTOGRAPHIC DOCUMENTATION

Date of photography: March 17 & December 17, 2008

Corner stone and railroad rail. The rail is 2.5' S.S.E. of the "+" on the stone.



Corner stone and railroad rail from north. The chaining pin is on the rail.



Corner stone - overhead view from the north. The "+" is on the north side of the stone, approximately 3" down from the top of the stone.



Same view as to the left with the etched "+" enhanced for ease of visual detection.



SECTION CORNER RECORD

SE 500-400

BOONE COUNTY SURVEYOR'S OFFICE

State Plane grid coordinates NAD83 (NSRS 2007):

North: 1719609.07 East: 3146019.02 (U.S. survey feet)

Type of monument: Harrison, 4" disk 'Section Corner'

Depth: 4 inches above adjoining grade.

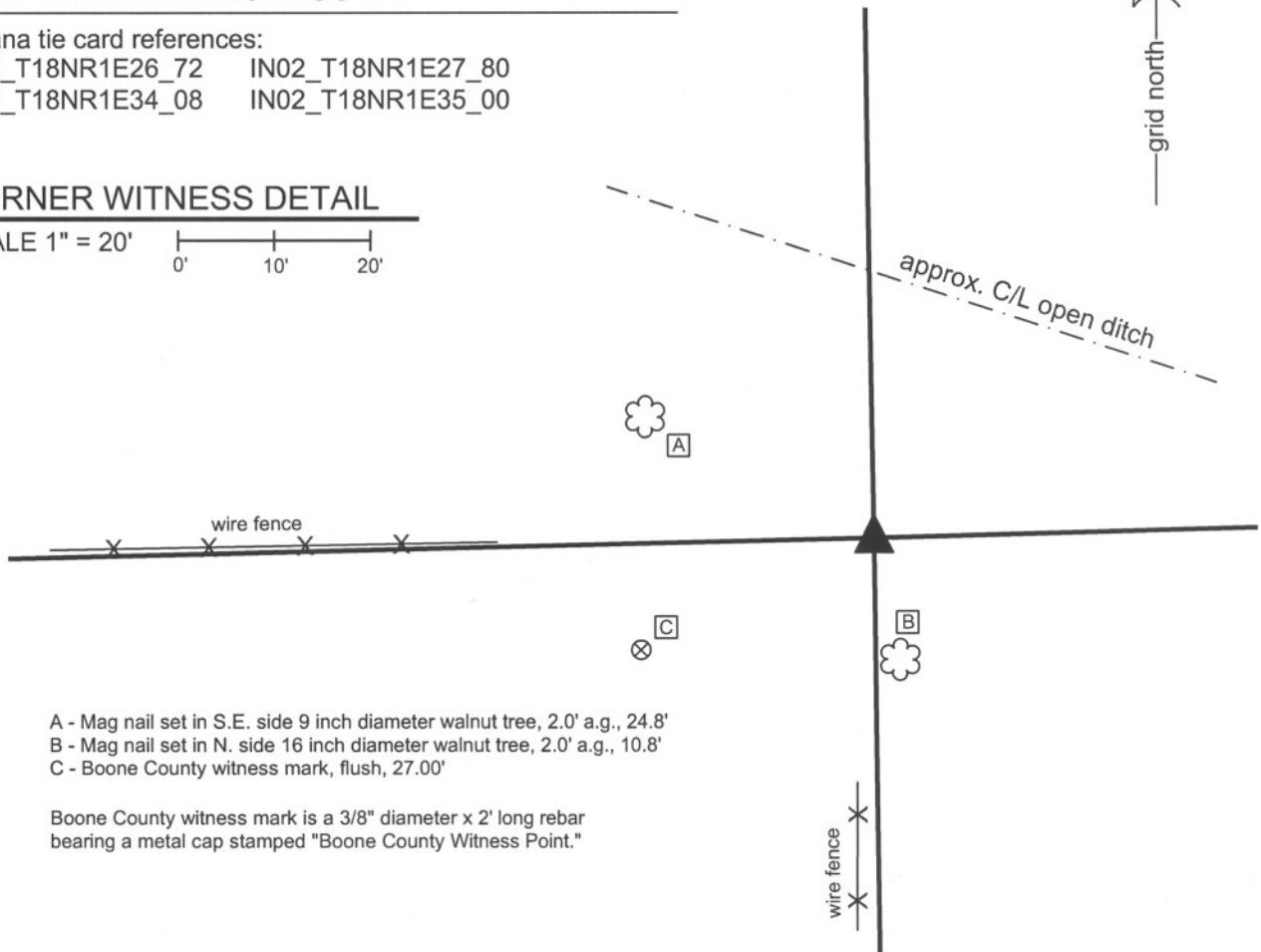
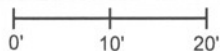
Indiana tie card references:

IN02_T18NR1E26_72 IN02_T18NR1E27_80

IN02_T18NR1E34_08 IN02_T18NR1E35_00

CORNER WITNESS DETAIL

SCALE 1" = 20'



- A - Mag nail set in S.E. side 9 inch diameter walnut tree, 2.0' a.g., 24.8'
- B - Mag nail set in N. side 16 inch diameter walnut tree, 2.0' a.g., 10.8'
- C - Boone County witness mark, flush, 27.00'

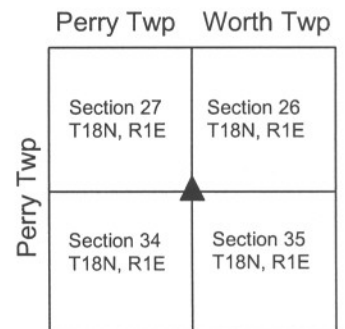
Boone County witness mark is a 3/8" diameter x 2' long rebar bearing a metal cap stamped "Boone County Witness Point."

The harrison monument was set in place of a rebar found at the base of a cedar post. A BCS record of July 23,24,28, 1868 states "Reestablished from Wh Ash Stump. Set a stake." No recent BCS tie cards were found referencing this corner. All recorded surveys found reference a rebar as the corner, including the preliminary survey to Perry Industrial Park, recorded in Survey Book 4, page 22 in the Office of the Boone County Recorder. This corner was excavated October 20, 2009. Prior to excavation, a wood post was visible approximately in line with portions of old fence to the West and South. A 5/8 inch rebar bearing a plastic cap stamped "Dodge S0288" was found at the east edge of the base of the post. The post was a cedar post, rotten and broken-off at ground level but intact below the ground. Evidence of old fences to the East, West and South were found at the post, below ground. No stones were found. As the rebar was adjacent to the post and has been held for the corner by all known surveys, the rebar was held as the corner and the harrison monument was set in its place. Uncertainties with the location of the corner with respect to different positions of the rebar and post are approximately one-half foot. This corner was originally established as a wood post in July, 1820.



Kenneth E. Hedge
 Kenneth E. Hedge, County Surveyor

James S. Swift
 James S. Swift, IN LS 20200054
 July 14, 2010



SECTION CORNER RECORD

SE 500-450

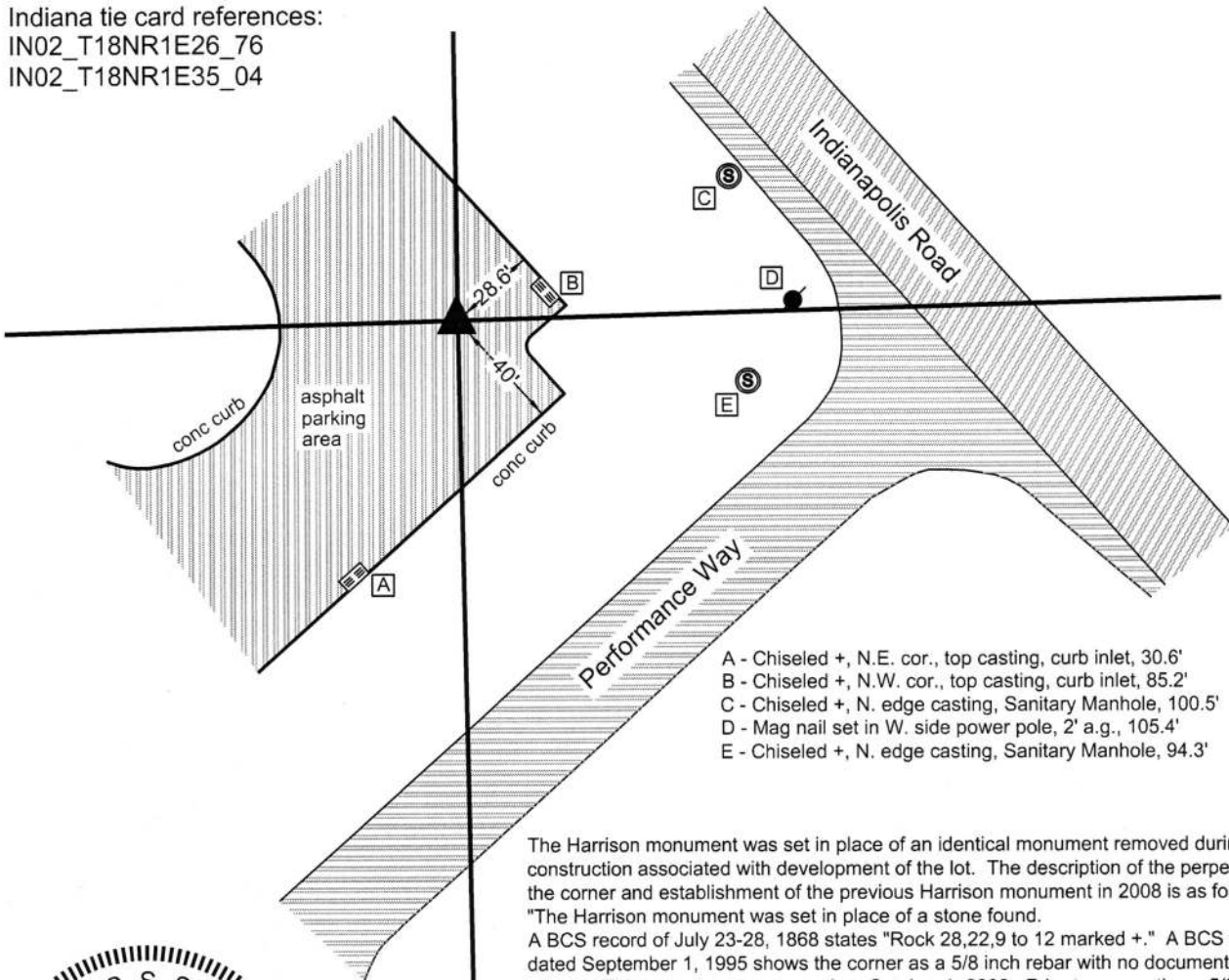
BOONE COUNTY SURVEYOR'S OFFICE

State Plane grid coordinates NAD83 (2011):
 North: 1719679.21 East: 3148686.15 (U.S. survey feet)
 Type of monument: Harrison, 4" disk 'Section Corner'
 Depth: flush with adjacent asphalt surface

CORNER WITNESS DETAIL

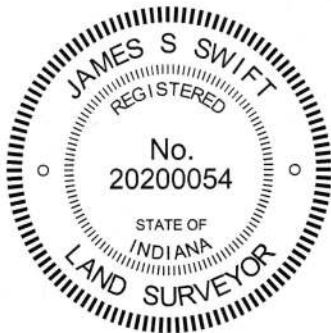
SCALE 1" = 60' 0' 30' 60'

Indiana tie card references:
 IN02_T18NR1E26_76
 IN02_T18NR1E35_04



- A - Chiseled +, N.E. cor., top casting, curb inlet, 30.6'
- B - Chiseled +, N.W. cor., top casting, curb inlet, 85.2'
- C - Chiseled +, N. edge casting, Sanitary Manhole, 100.5'
- D - Mag nail set in W. side power pole, 2' a.g., 105.4'
- E - Chiseled +, N. edge casting, Sanitary Manhole, 94.3'

The Harrison monument was set in place of an identical monument removed during construction associated with development of the lot. The description of the perpetuation of the corner and establishment of the previous Harrison monument in 2008 is as follows:
 "The Harrison monument was set in place of a stone found.
 A BCS record of July 23-28, 1868 states "Rock 28,22,9 to 12 marked +." A BCS tie card dated September 1, 1995 shows the corner as a 5/8 inch rebar with no documentation about source. This corner was excavated on October 1, 2008. Prior to excavation a 5/8 inch rebar was visible at the surface, on the north edge of a small gravel lane. Excavation revealed the base of an old wood post, no remains above the surface, but intact at and below ground level, approximately 1.25 feet west of the rebar. Excavation also revealed the record stone immediately southwest of the wood post. The stone exactly matched the record description, measuring 22 inches N-S by 9 inches (near the top) to 12 inches (at the base) E-W by 28 inches vertical with an etched "+" on the west side, 3 inches down from the top. The top of the stone was approximately 4 inches below grade. The stone was removed, as construction is likely at this site in the near future. The Harrison monument was set in the position of the top, center of the stone, in line with the etched "+". This position is 1.0 foot south and 2.0 feet west of the 5/8 inch rebar."
 This corner was originally established as a wood post in June, 1820.



Worth Twp	Section 26 T18N, R1E
▲	
Perry Twp	Section 35 T18N, R1E

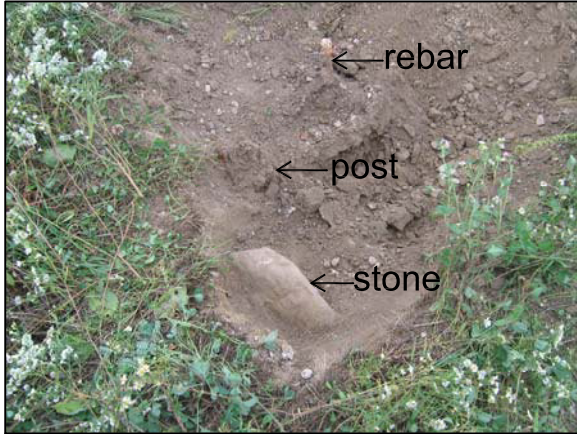
James S. Swift
 James S. Swift, IN LS 20200054
 April 21, 2017

Kenneth E. Hedge
 Kenneth E. Hedge, County Surveyor

PHOTOGRAPHIC DOCUMENTATION

Date of photography: October 1, 2008

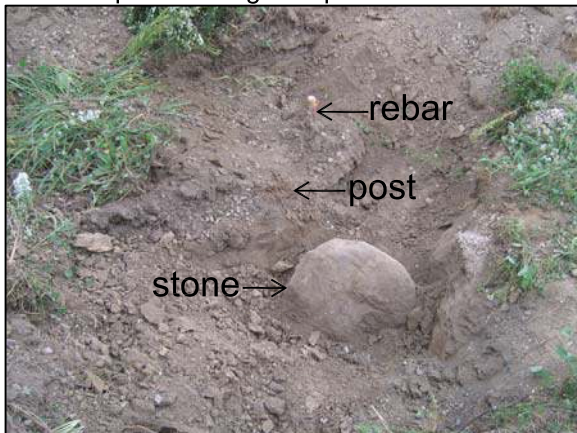
Overhead view from southwest showing partially exposed stone, partially exposed post and rebar.



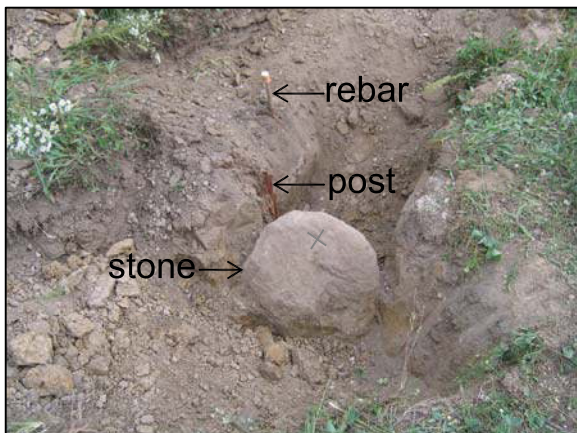
View from south looking across stone and post to wood post at southerly terminus of north-south fence. Post is on North Indianapolis Road.



Over head view from west showing more of the stone exposed along with post and rebar.



Similar view as above with most of the stone and post exposed and the etched "+" on the stone enhanced for ease of visual detection.



Overhead view from east showing rebar and most of stone and post exposed.



For details and documentation, refer to related sheet "Section Corner Record."

SECTION CORNER RECORD

SE 500-500

BOONE COUNTY SURVEYOR'S OFFICE

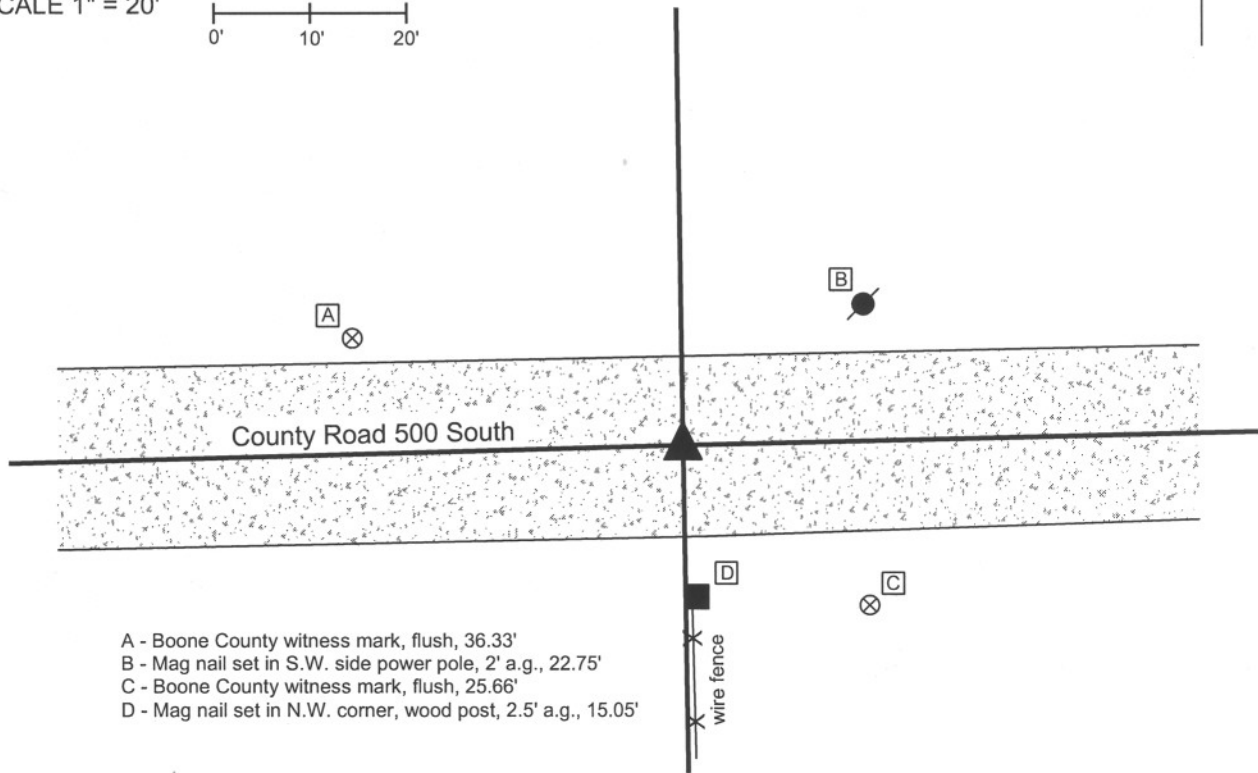
State Plane grid coordinates NAD83 (NSRS 2007):
North: 1719749.71 East: 3151359.26 (U.S. survey feet)

Type of monument: Harrison, 4" disk 'Section Corner'
Depth: Four inches below adjacent gravel road surface

Indiana tie card references:
IN02_T18NR1E25_72 IN02_T18NR1E26_80
IN02_T18NR1E35_08 IN02_T18NR1E36_00

CORNER WITNESS DETAIL

SCALE 1" = 20'



- A - Boone County witness mark, flush, 36.33'
- B - Mag nail set in S.W. side power pole, 2' a.g., 22.75'
- C - Boone County witness mark, flush, 25.66'
- D - Mag nail set in N.W. corner, wood post, 2.5' a.g., 15.05'

The harrison monument was set in place of a railroad rail found.
 A BCS record of 12/26/1861 states "found from stump of tree." A BCS record of 7/23/1868 states "re-established. Set a rock, 18,14,7 marked + on top." BCS tie cards dated June 10, 1991 and November 3, 2005 call for a railroad rail. No source record for the railroad rail was found.
 Prior to excavation the railroad rail was situated 6 inches below grade in the approximate center of County Road 500 South, north and slightly west of the end post of a well established fence to the south. An area seven feet E-W by seven feet N-S, centered on the rail, was excavated into the clay (approximately 24 inches deep) on March 31, 2008. Neither the record stone nor any other monument was found. The rail was replaced with a harrison monument set in concrete.
 This corner was originally established as a wood post in June 1820.



Kenneth E. Hedge
 Kenneth E. Hedge, County Surveyor

Perry Township

James S. Swift
 James S. Swift, IN LS 20200054

Worth Township

March 11, 2009

Section 26 T18N, R1E	Section 25 T18N, R1E
Section 35 T18N, R1E	Section 36 T18N, R1E