

# SECTION CORNER RECORD

## BOONE COUNTY SURVEYOR'S OFFICE

NW 700-600

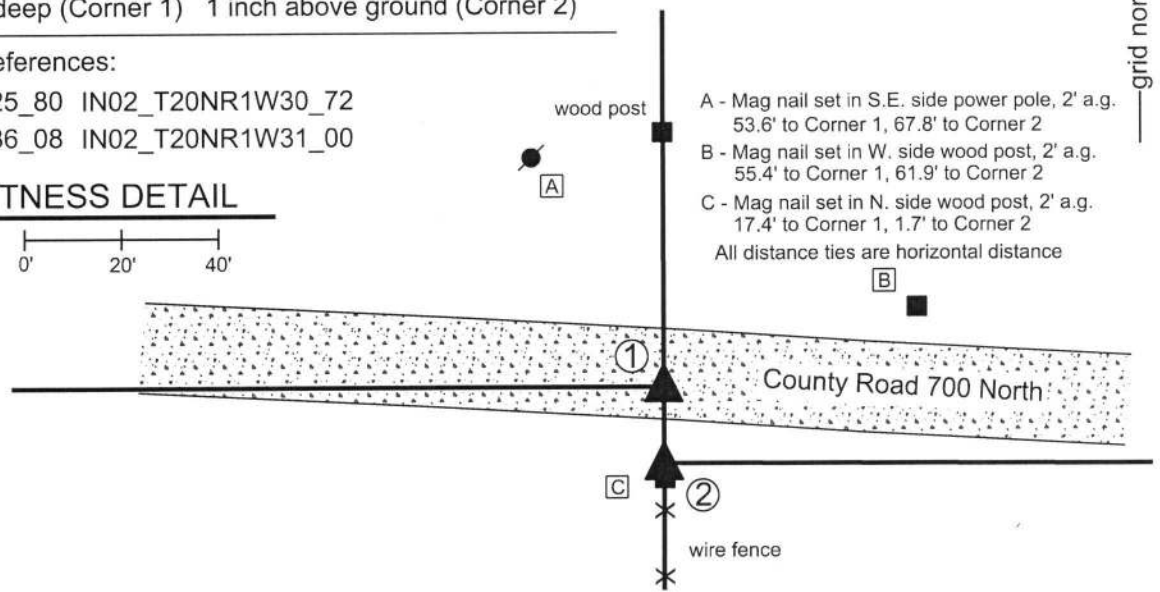
State Plane grid coordinates NAD83 (2011):  
 Corner 1: North: 1782631.81 East: 3093109.89 (U.S. survey feet)  
 Corner 2: North: 1782616.01 East: 3093109.93 (U.S. survey feet)

Type of monument: Harrison, 4" disk 'Section Corner'  
 Depth: 4 inches deep (Corner 1) 1 inch above ground (Corner 2)

Indiana tie card references:  
 IN02\_T20NR2W25\_80 IN02\_T20NR1W30\_72  
 IN02\_T20NR2W36\_08 IN02\_T20NR1W31\_00

### CORNER WITNESS DETAIL

SCALE 1" = 40'



- ① S.E. Corner, Section 25  
N.E. Corner, Section 36  
T 20 N, R 2 W
- ② S.W. Corner, Section 30  
N.W. Corner, Section 31  
T 20 N, R 1 W

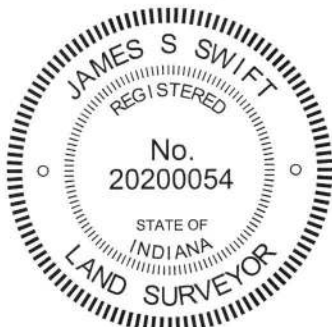
Distance between monuments: 15.8'  
 Federal closing dist. 27 links (17.82')

- A - Mag nail set in S.E. side power pole, 2' a.g.  
53.6' to Corner 1, 67.8' to Corner 2
  - B - Mag nail set in W. side wood post, 2' a.g.  
55.4' to Corner 1, 61.9' to Corner 2
  - C - Mag nail set in N. side wood post, 2' a.g.  
17.4' to Corner 1, 1.7' to Corner 2
- All distance ties are horizontal distance

The Harrison monument at Corner 1 was set in place of a stone found. The Harrison monument at Corner 2 was set in place of a stone known to formerly mark the corner.

No specific descriptions of Corner 1 were found in the BCS Surveyor's Record beyond the original establishment of the corner as a wood post in 1819. Corner 2 is described in a record of March 10, 1906 which states, 'Found Rock.' This entry also includes distances, in feet, to the adjacent corner 1/4 mile south. The original federal closing distance on the range line, reported in 1829 is 27 links south, or 17.82 feet. No recent BCS tie cards were found referencing the corner. Corner 2 is shown as being a stone on a survey by Cary B. Dodge, LS #S0288, recorded in Survey Book 1, pages 11-12 and on a survey by Jerry L. Carter, LS #S0350, recorded in Survey Book 11, page 64, both in the Recorder's Office of Boone County. Corner 2 is shown as a rebar on a survey by Jonathon E. Hause, LS 20600040, recorded in Survey Book 18, pages 86-87. This stone was found and located in 2010. The rebar was found in 2018, in approximately the same position as the stone. The stone was not observed to be present in 2018. Corner 2 is also called as a stone in the deed for the adjoining property to the north, Slipher, Instrument 200600013687. The Slipher deed describes Corner 1 as being 17.82 feet north of the stone at Corner 2. The found stone/rebar at Corner 2 work with monuments found marking corners of the Slipher parcel. The 1923 plans for US 52, called Lafayette Pike, do not provide reliable information about the position of the corners or the line between sections 30 and 31, as they cross the highway.

It is noted that County Road 700 North does not line up well with the section lines in this vicinity. Most deeds for land east of U.S. 52 call for the section line to be along or near the north right-of-way line, which works with the stone found at Corner 2 and a stone found at the north quarter corner of section 31 (see BCS Corner NW 700-550). Excavation on March 15, 2019 revealed a stone found at 10 inches deep, at the bottom of the road bed of County Road 700 North, 15.8 feet north of the rebar ostensibly marking Corner 2. This stone measured 8 inches N-S by 10 inches E-W by 8 inches tall. With respect to the evidence of the County Road 700 North, the stone appeared in the field as if it could be either corner. However, the stone (now rebar) at Corner 2 is substantiated as the corner not only by the numerous deeds and surveys which are tied to it, but also by a distance reference in the 1906 BCS record which calls the corner as being 1322-1/2 feet north of Corner "h" of section 31. The distance between the stone/rebar and a post found providing evidence of Corner "h" was measured to be 1322.9 feet. Hence, it is accepted that the stone at Corner 2 held as the corner by modern surveyors was also held as the corner by the Boone County Surveyor in 1906. The stone found in the road bed was accepted as marking Corner 1 and was replaced with a Harrison monument on April 1, 2019. The stone, now rebar, on the south edge of the road was accepted as providing reliable evidence of Corner 2. Approximately one-half foot of uncertainty is associated with the various calls for the stone and rebar. The north-south position of the rebar was held for Corner 2 but the Harrison monument was set on the range line, defined by the stone at Corner 1 and a nail providing evidence of the corner 1/2 mile south. This position is 0.2 foot west of the rebar and within the extent of uncertainty of the position of the stone. Corner 2 was monumented on April 10, 2019.



*Kenneth E. Hedge*  
 Kenneth E. Hedge, County Surveyor

*James S. Swift*  
 James S. Swift, IN LS 20200054  
 April 24, 2019

Sugar Creek Township      Washington Township

Section 25 T20N, R2W	Section 30 T20N, R1W
Section 36 T20N, R2W	Section 31 T20N, R1W

# SECTION CORNER RECORD

## BOONE COUNTY SURVEYOR'S OFFICE

NW 750-600

- ① East Quarter Corner  
Section 25  
T 20 N, R 2 W
- ② West Quarter Corner  
Section 30  
T 20 N, R 1 W

Distance between monuments: 29.6'

State Plane grid coordinates NAD83 (2011):

Corner 1: North: 1785279.38 East: 3093103.13 (U.S. survey feet)

Corner 2: North: 1785239.80 East: 3093103.23 (U.S. survey feet)

Type of monument: 36" long 5/8" rebar with metal cap 'Boone County Surveyor'  
Depth: 2 inches up (Corner 1), flush (Corner 2)

Indiana tie card references:

IN02\_T20NR2W25\_44

IN02\_T20NR1W30\_36

### CORNER WITNESS DETAIL

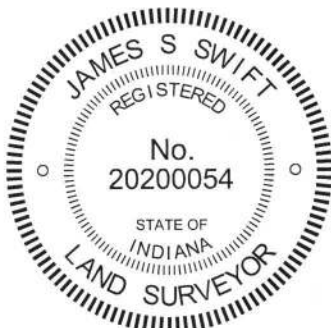
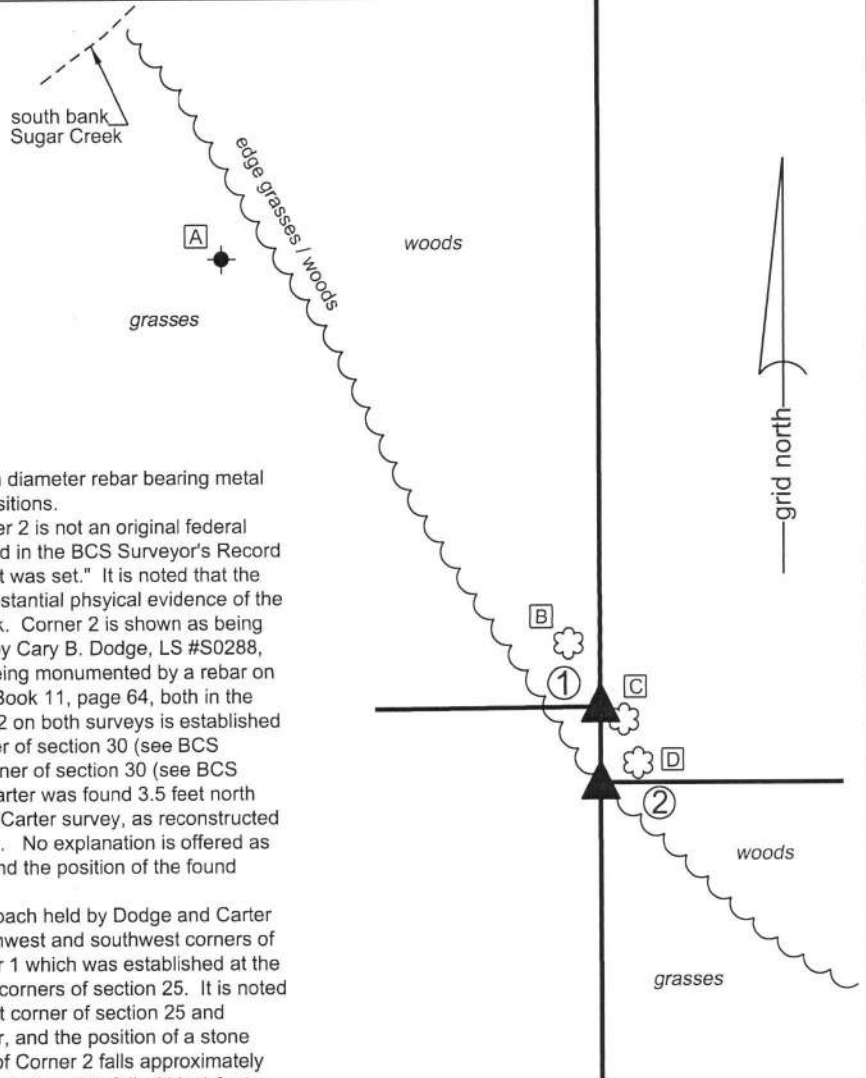
SCALE 1" = 100'

- A - Plastic Petroleum Pipeline Marker, 4' tall  
304.4' to Corner 1, 345.7' to Corner 2
- B - S. edge, 18" diam. hackberry tree @ 2' a.g.  
32.9' to Corner 1, 69.4' to Corner 2
- C - W. edge, 18" diam. hackberry tree @ 2' a.g.  
5.8' to Corner 1, 34.7' to Corner 2
- D - W. edge, 27" diam. hackberry tree @ 2' a.g.  
35.1' to Corner 1, 15.0' to Corner 2

Both corners are monumented by 36 inch lengths of 5/8 inch diameter rebar bearing metal caps stamped 'Boone County Surveyor' set at calculated positions. Corner 1 was originally set on the range line in 1819. Corner 2 is not an original federal corner. No specific descriptions of these corners were found in the BCS Surveyor's Record other than an 1878 entry which notes Corner 2 as "Rock that was set." It is noted that the corners fall in the immediate vicinity of Sugar Creek and substantial physical evidence of the section lines was not found, due to the proximity of the creek. Corner 2 is shown as being established, but not necessarily monumented, on a survey by Cary B. Dodge, LS #S0288, recorded in Survey Book 1, pages 11-12 and is shown as being monumented by a rebar on a survey by Jerry L. Carter, LS #S0350, recorded in Survey Book 11, page 64, both in the Recorder's Office of Boone County. The position of Corner 2 on both surveys is established as a midpoint between a stone found at the southwest corner of section 30 (see BCS Corner NW 700-600) and a rebar found at the northwest corner of section 30 (see BCS Corner NW 800-600). A rebar bearing the cap of Jerry L. Carter was found 3.5 feet north and 3.1 feet east of the position shown as the corner on the Carter survey, as reconstructed relative to other monuments found and shown on the survey. No explanation is offered as to the variation between the position shown on the survey and the position of the found rebar.

Given the lack of physical evidence of the corners, the approach held by Dodge and Carter of establishing Corner 2 at the midpoint connecting the northwest and southwest corners of section 30 was held. This theory was also applied to Corner 1 which was established at the midpoint of the line connecting the northeast and southeast corners of section 25. It is noted that, due to variations between the positions of the northeast corner of section 25 and northwest corner of section 30, as held by Dodge and Carter, and the position of a stone found in 2016 (see BCS Corner NW 800-600), the position of Corner 2 falls approximately 2.5 feet east of the Dodge / Carter theoretical position, but is believed to fall within 1 foot north-south of this position. It is noted that a very short section of wire was found between the corners. The wire was wrapped around the trunk of a tree and did not appear to be part of a fence or represent evidence of the corners.

Both corners were monumented as noted above at the respective midpoints on April 10, 2019.



*Kenneth E. Hedge*  
Kenneth E. Hedge, County Surveyor

*James S. Swift*  
James S. Swift, IN LS 20200054  
April 24, 2019

Sugar Creek Township	Washington Township
Section 25 T20N, R2W	Section 30 T20N, R1W

# SECTION CORNER RECORD

## BOONE COUNTY SURVEYOR'S OFFICE

NW 750-700

State Plane grid coordinates NAD83 (2011):

Corner: North: 1785227.93 East: 3087853.78 (U.S. survey feet)

Witness: North: 1785228.43 East: 3087853.78 (U.S. survey feet)

Corner: Wood corner post

Witness: 5/8 inch rebar with metal cap stamped 'Boone County Surveyor'

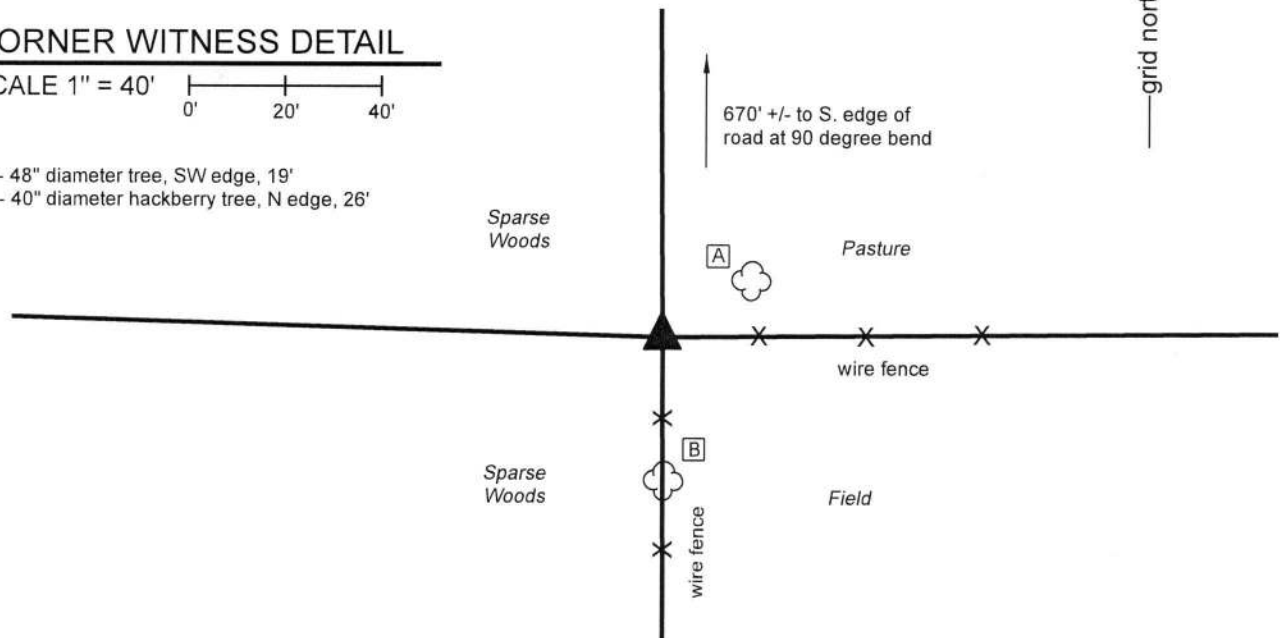
Indiana tie card references:

IN02\_T20NR2W26\_44 IN02\_T20NR2W25\_36

### CORNER WITNESS DETAIL

SCALE 1" = 40'

- A - 48" diameter tree, SW edge, 19'
- B - 40" diameter hackberry tree, N edge, 26'

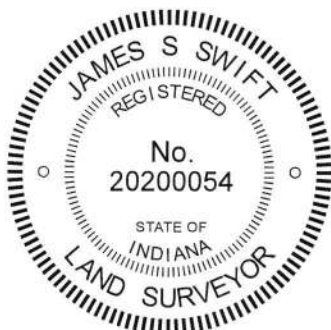


The wood corner post was found in place. The post is considered the corner. The 5/8 inch diameter rebar with 'Boone County Surveyor' cap is a witness, set at the north edge of the post, 0.5 foot north of the center of the post.

A BCS record of August 20, 1853 states, with respect to this corner, "Stone set. No tree." No recent BCS tie cards were found referencing the corner. A survey by Jonathon E. Hause, LS20600040, recorded in Survey Book 11, pages 45-46, in the Office of the Boone County Recorder shows the corner as an 8x8 inch wood post. The associated land description, found in Instrument 201200010221 also refers to the corner as an 8x8 inch wood post. Another survey by Mr. Hause, recorded as Instrument 20070001186, shows the corner as a head post.

This corner was excavated on November 20, 2018. Prior to excavation, a 5x5 inch wood corner post was found at the intersection of ancient fences to the west and south, 228 feet north of another wood post found at the intersection of fences to the north and west. The found post is clearly the same as is called in the aforementioned surveys and land description, though the size does not match that called in those documents. Excavation around the post revealed a stone found at 14 inches deep, the top center of which is 1.5 feet northwest of the post. The stone is large and conspicuously proximate to the post, but no marks were found on the stone, it did not appear to bear the characteristics of a stone purposely set to mark the corner and could not be positively identified to be a corner stone. No other stones were found in the immediate vicinity of the post. The post works well with the relative positions of adjacent corners. A rebar found 650.3 feet north of the post, being on the south edge of the county road to the north, at the 90 degree bend in said road, falls precisely along the line connecting the post and the section corner to the north (see BCS corner NW-800-700). The post was accepted as marking the corner. The post was left in place, witnessed by a BCS capped rebar as noted above.

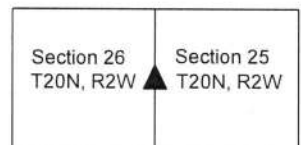
This corner was originally established as a wood post in 1829.



*Kenneth E. Hedge*  
Kenneth E. Hedge, County Surveyor

*James S. Swift*  
James S. Swift, IN LS 20200054  
February 12, 2019

Sugar Creek Township



# SECTION CORNER RECORD

NW 800-600

## BOONE COUNTY SURVEYOR'S OFFICE

State Plane grid coordinates NAD83 (2011):

Corner 1: North: 1787926.96 East: 3093096.37 (U.S. survey feet)

Corner 2: North: 1787863.30 East: 3093096.53 (U.S. survey feet)

Type of monument: Harrison, 4" disk 'Section Corner'

Depth: Flush with adjacent ground

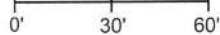
Indiana tie card references:

IN02\_T20NR2W24\_80 IN02\_T20NR1W19\_72

IN02\_T20NR2W25\_08 IN02\_T20NR1W30\_00

### CORNER WITNESS DETAIL

SCALE 1" = 60'



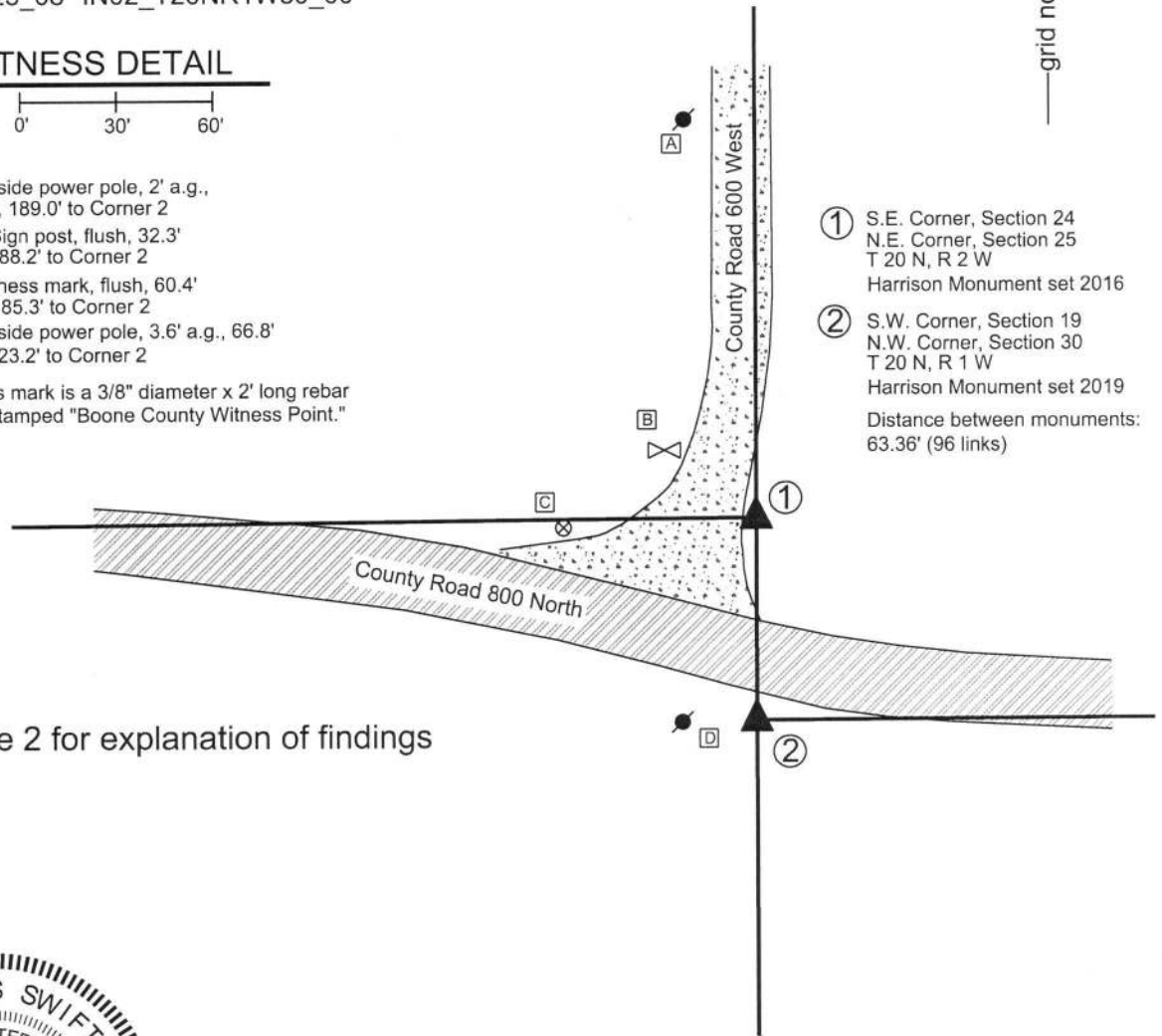
A - Mag nail set in E. side power pole, 2' a.g.,  
126.2' to Corner 1, 189.0' to Corner 2

B - East Edge, Stop Sign post, flush, 32.3'  
32.3' to Corner 1, 88.2' to Corner 2

C - Boone County witness mark, flush, 60.4'  
60.4' to Corner 1, 85.3' to Corner 2

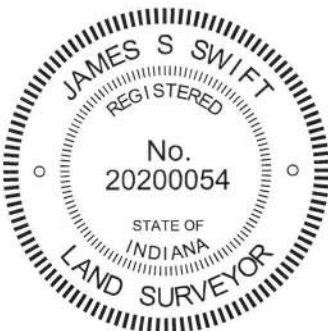
D - Mag nail set in N. side power pole, 3.6' a.g., 66.8'  
66.8' to Corner 1, 23.2' to Corner 2

Boone County witness mark is a 3/8" diameter x 2' long rebar bearing a metal cap stamped "Boone County Witness Point."



- ① S.E. Corner, Section 24  
N.E. Corner, Section 25  
T 20 N, R 2 W  
Harrison Monument set 2016
  - ② S.W. Corner, Section 19  
N.W. Corner, Section 30  
T 20 N, R 1 W  
Harrison Monument set 2019
- Distance between monuments:  
63.36' (96 links)

See page 2 for explanation of findings



Sugar Creek Township    Washington Township

Section 24 T20N, R2W	Section 19 T20N, R1W
Section 25 T20N, R2W	Section 30 T20N, R1W

*Kenneth E. Hedge*  
Kenneth E. Hedge, County Surveyor

*James S. Swift*  
James S. Swift, IN LS 20200054



# SECTION CORNER RECORD

## BOONE COUNTY SURVEYOR'S OFFICE

NW 800-600

The Harrison monument at Corner 1 was set over a stone found.

A BCS record dated March 28-29, 1907 states, with respect to Corner 1, "Reestablished by locating 'A' sec. 30 R 1 W, and measuring lap. Set 2 rocks. Lower one 4-5-6 +. Top one 6-8-10 +." This statement is interpreted to indicate that the location of Corner 2 (Cor. A, sec. 30) was known and that Corner 1 (SE corner section 24 & NE corner section 25, R2W) was established at the record federal offset from the known corner. It is noted that the closing offset at this corner is 96 links south, equating to 63.36 feet. No modern BCS tie cards were found referencing this corner.

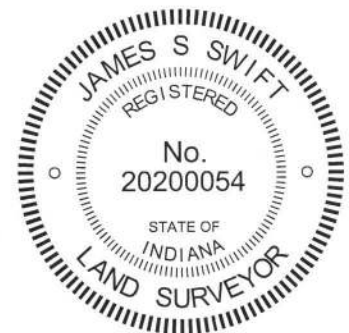
Excavation was performed at Corner 1 on April 13, 2016. Prior to excavation, a 5/8 inch diameter rebar with no cap was found ostensibly marking Corner 1 (sections 24 & 25) and a 5/8 inch diameter rebar with a yellow cap was found in the general vicinity of Corner 2 (sections 19 & 30), 59.2 feet south of the uncapped rebar. The source of these monuments is not known. Analysis of the relative positions the approximate centers of County Road 800 North to the east and west of the intersection, with respect to the closing distance of 96 links, indicated that the original positions of the corners were likely further north than the respective positions of the found monuments.

Excavation was performed exclusively at Corner 1, as Corner 2 falls at the edge of an existing drainage ditch on the south side of County Road 800 North. Excavation at Corner 1 revealed two stones found approximately 8 feet north and 5 feet east of the existing rebar ostensibly marking Corner 1. The top stone was found at 14 inches deep. The stone was found to be approximately 11 inches N-S by 8 inches E-W by 5 inches tall with a distinct "+" mark etched on the top. The stone was removed and another stone was found below. The lower stone measured approximately 7 inches N-S by 6 inches E-W. This stone also had a distinct "+" mark etched on the top. The height of the lower stone was not measured, as it was left in place, generally undisturbed at 20 inches deep. The two stones were found to match the record dimensions stated in the 1907 record within reasonable tolerance. With the similar measurements and the distinct, etched marks on both rocks, they were accepted being the monuments described in the 1907 record and were held as marking the corner. It is noted that these rocks were found to be significantly closer to the position for the corner as estimated prior to excavation than was the found rebar. The top stone was removed and the lower stone was left in place, undisturbed. A Harrison monument was set directly over the mark on the lower stone. Three rebars of 3/8 inch diameter by 20 inches in length were driven at slightly off vertical around the lower stone to provide for stability of the concrete base in which the Harrison monument was set. The precise position of the corner is 8.3 feet north and 5.1 feet east of the rebar found prior to, and removed during, excavation. This document was originally published on February 20, 2017 showing only the position of Corner 1 and stating that the position of Corner 2 would be determined after the adjacent corners to the north and south are established.


Having perpetuated the positions of the Corners to the north and south, Corner 2 was established in April, 2019. Per the original federal notes and the BCS record of 1907, Corner 2 was established at 96 links, or 63.36 feet, south of Corner 1, along the range line as defined by the corners to the south (see BCS Corners NW 700-600 and NW 750-600).

It is noted that a survey by Cary B. Dodge, LS #S0288, recorded in Survey Book 1, pages 11-12 and a survey by Jerry L. Carter, LS #S0350, recorded in Survey Book 11, page 64, both in the Recorder's Office of Boone County, show both corners as being 5/8 inch rebars. The rebar shown as being Corner 1 is believed to be the same rebar as discussed above, found to be 8 feet south and 5 feet west of the stone set in 1907. Notably, the Dodge and Carter surveys show Corner 2 to be at 54 feet south of Corner 1, rather than 63.36 feet. Hence, holding the stone set in 1907 and holding the record closing distance, the position of Corner 2 is believed to be within approximately one foot north-south of the position held by Dodge and Carter, but approximately 5 feet east. The rebar shown on the two surveys was not found. The rebar with yellow cap found near Corner 2 was left in place, 5.2 feet west and 4.4 feet south of the Harrison monument set at Corner 2. This is not believed to be the same monument as shown on the Dodge and Carter Surveys.

Corner 1 was originally established as a wood post in 1819. Corner 2 was originally established as a wood post in 1829.



  
Kenneth E. Hedge, County Surveyor

  
James S. Swift, IN LS 20200054

PHOTOGRAPHIC DOCUMENTATION

Date of photography: April 13, 2016

The upper stone as it was originally exposed.



The upper stone fully exposed, showing the etched "+" mark on the stone.



The lower stone exposed, showing the etched "+" mark on the stone.



View from the south, showing the area of excavation. Brandon Miller, Miller Excavating, is inspecting the upper stone as found.



For details and documentation, refer to related sheet "Section Corner Record."



PHOTOGRAPHIC DOCUMENTATION

Date of photography: April 13, 2016

The upper stone as it was originally exposed.



The upper stone fully exposed, showing the etched "+" mark on the stone.



The lower stone exposed, showing the etched "+" mark on the stone.



View from the south, showing the area of excavation. Brandon Miller, Miller Excavating, is inspecting the upper stone as found.



For details and documentation, refer to related sheet "Section Corner Record."

# SECTION CORNER RECORD

NW 800-650

## BOONE COUNTY SURVEYOR'S OFFICE

State Plane grid coordinates NAD83 (2011):

North: 1787918.78 East: 3090452.43 (U.S. survey feet)

Type of monument: Harrison, 4" disk 'Section Corner'

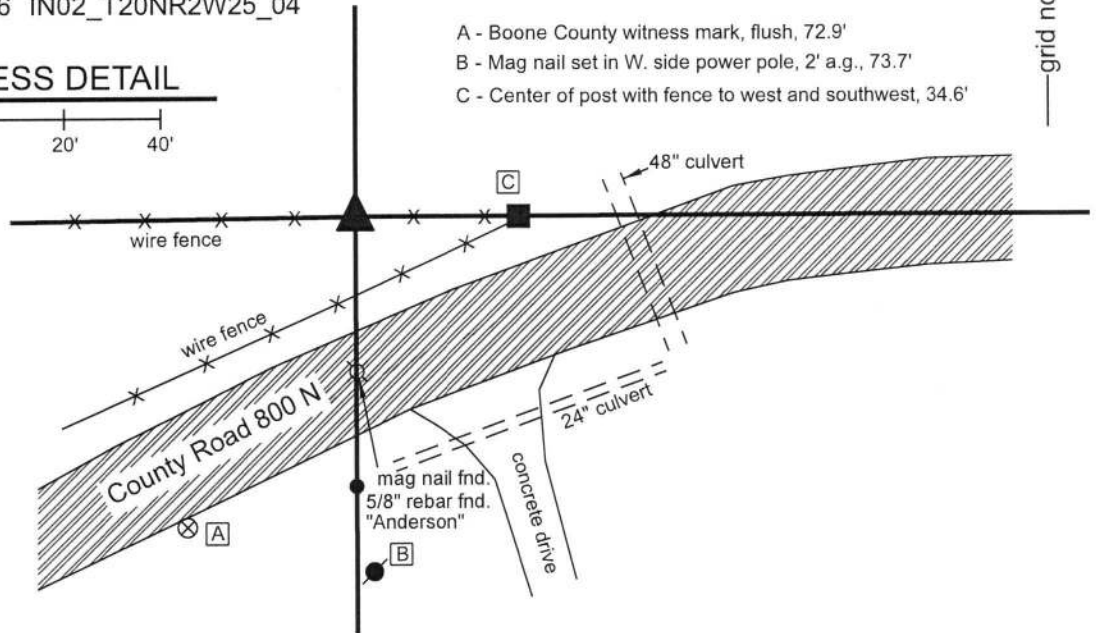
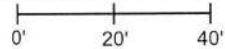
Depth: two inches above adjacent ground

Indiana tie card references:

IN02\_T20NR2W24\_76 IN02\_T20NR2W25\_04

### CORNER WITNESS DETAIL

SCALE 1" = 40'



- A - Boone County witness mark, flush, 72.9'
- B - Mag nail set in W. side power pole, 2' a.g., 73.7'
- C - Center of post with fence to west and southwest, 34.6'



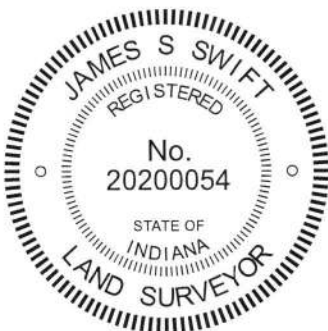
The Harrison monument was set in place of a rebar found.

A BCS record of November 28, 1885 states, with respect to this corner, "Found from stump of Lynn and B. Walnut, .... , rock 15.12.12."

No recent BCS tie cards were found referencing this corner. A survey recorded in Survey Book 13, pages 73-74 in the Office of the Boone County Recorder shows this corner as a 5/8 inch diameter rebar with plastic cap stamped "Dodge S-0288." The survey states that the rebar was set by Cary Dodge, LS S0288, by survey dated April 3, 1998.

This corner was excavated on December 3 and December 17, 2018. Prior to excavation, the rebar called on the aforementioned survey was found flush with the adjacent ground, situated in an east-west fence, situated in an east-west fence. Minor excavation and substantial probing around the rebar and along the base of the fence in both directions revealed no further evidence of the corner. No rocks of any substantial size were found by probing. It is observed that the rebar fits well with evidence of the section line, being in the east-west fence and being generally in-line with the center of the county road to the east. It is also observed that the rebar fits well with the relative positions of the corner 1/2 mile east (see BCS corner NW 800-600) and evidence of the 1/4 1/4 corner between the subject corner and said corner NW 800-600. A railroad spike found in the center of County Road 800 North, situated directly south of an old wood post on the north side of the road is within one foot, east-west, of a theoretical midpoint between the found rebar at the subject corner and the corner 1/2 mile east. Hence, it is observed that the found rebar fits well with the local evidence (fence and road) in the north-south dimension and fits well with approximately one foot of uncertainty with the remote evidence (corners 1/4 mile and 1/2 mile east, respectively) in the east-west dimension. The rebar is also in line with a rebar with metal cap stamped "Carl Anderson" (former Boone County Surveyor) found on the south side of the road and a mag nail found in the center of the road and fits well with the descriptions of the properties to the southwest and southeast. It is noted, however, that the found rebar falls 13.8 feet north and 11.5 west of a calculated midpoint between said corner 1/2 mile east and the corner 1/2 mile west (see BCS corner NW 800-700). No explanation is offered for this disparity. The found rebar, matching the local evidence and most reliable remote evidence, and known to have been held as marking the corner for previous surveys, was accepted as providing the best available evidence of the corner. The rebar was removed and replaced with a Harrison monument in the same position on December 17, 2018.

This corner was originally established as a wood post in 1829.



*Kenneth E. Hedge*  
Kenneth E. Hedge, County Surveyor

*James S. Swift*  
James S. Swift, IN LS 20200054  
January 16, 2019

Sugar Creek  
Township

Section 24  
T20N, R2W

Section 25  
T20N, R2W



# SECTION CORNER RECORD

NW 800-700


## BOONE COUNTY SURVEYOR'S OFFICE

State Plane grid coordinates NAD83 (CORS96):  
 North: 1787883.15 East: 3087831.72 (U.S. survey feet)

Type of monument: Harrison, 4" disk 'Section Corner'  
 Depth: flush with adjacent road surface

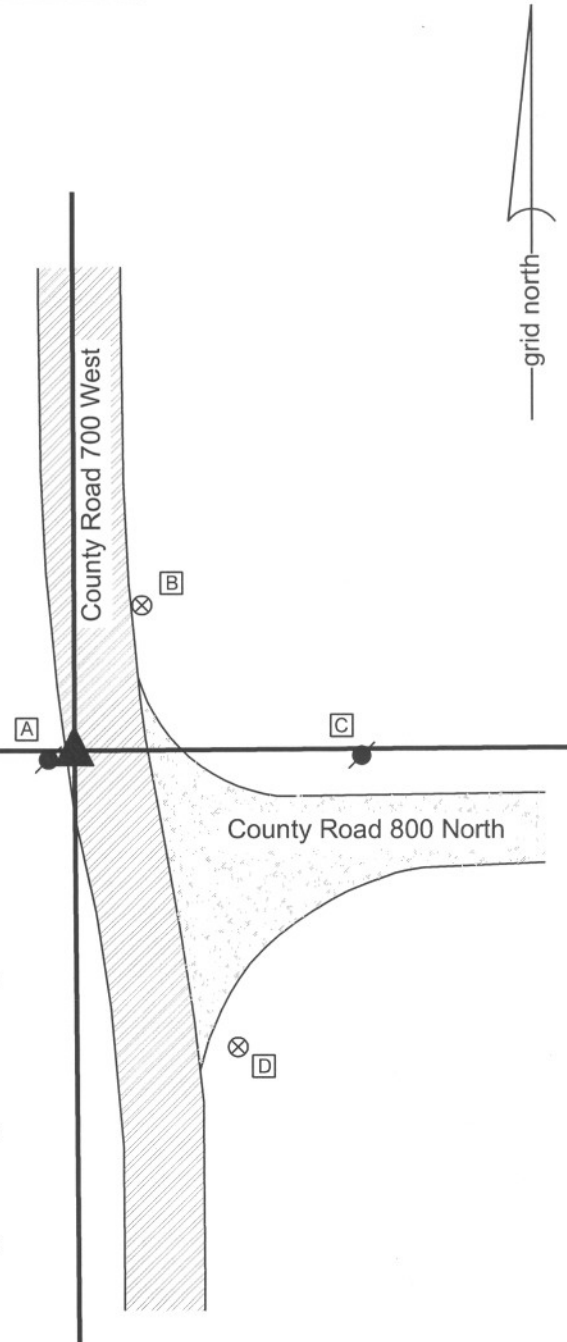
Indiana tie card references:  
 IN02\_T20NR2W23\_80 IN02\_T20NR2W24\_72  
 IN02\_T20NR2W26\_08 IN02\_T20NR2W25\_00

### CORNER WITNESS DETAIL

SCALE 1" = 40' 

- A - Mag nail set in E. side power pole, 10 in. a.g., 3.04'
- B - Boone County witness mark, flush, 33.32'
- C - Mag nail set in W. side power pole, 2' a.g., 57.76'
- D - Boone County witness mark, flush, 70.36'

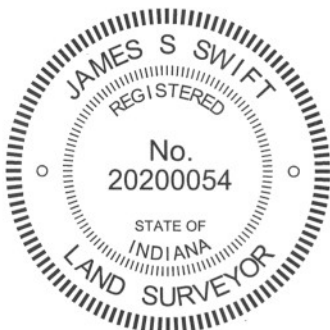
Boone County witness mark is a 3/8" diameter x 2' long rebar bearing a metal cap stamped "Boone County Witness Point."



The harrison monument was set over a vertical section of railroad rail found. No specific descriptions of this corner were found in the BCS Surveyor's Record beyond the original establishment of the corner as a wood post in 1829. The corner is shown on records of 1832, but not described. It is shown as the terminal point for measurements on records of 1889 and 1907. A BCS tie card dated October 2, 1964 states 'pile 3" x 5" stones found. RRR set.'

This corner was excavated on March 29, 2011 in response to questions about GIS parcel mapping in the vicinity. Prior to excavation a PK nail was found at the edge of County Road 700 West, in line with the southerly prolongation of the center of the road to the north and in line with the westerly prolongation of a fence to the west. The nail was removed and a rebar with a plastic cap stamped "Witness Point" was found below. The rebar was bent. The rebar was removed and a vertical section of railroad rail was found and 16 inches deep. The position of the rail was slightly northeast of the nail. The rail was accepted as being the monument called for on the 1964 tie card, set in place of the 'pile of stones.'

The deeds for several parcels in this immediate vicinity call for the east-west section line to be along the approximate north right-of-way of County Road 800 North and call for the north-south section line to the south of the corner as being along the approximate west right-of-way line of County Road 700 West. The position of the rail fit with this description and also fit with occupation and monumentation, relative to deed ties to the corner, for properties to the north and south of the corner. The railroad rail was held as marking the corner and was left in place. The harrison monument was set directly over the rail.



  
 Kenneth E. Hedge, County Surveyor

  
 James S. Swift, IN LS 20200054  
 March 30, 2012

Sugar Creek Township

Section 23 T20N, R2W	Section 24 T20N, R2W
Section 26 T20N, R2W	Section 25 T20N, R2W