

SECTION CORNER RECORD

NW 750-000

BOONE COUNTY SURVEYOR'S OFFICE

State Plane grid coordinates NAD83 (2011):

Corner 1: North: 1785207.62 East: 3124770.96 (U.S. survey feet)

Corner 2: North: 1785229.59 East: 3124771.09 (U.S. survey feet)

Type of monument: Harrison, 4" disk 'Section Corner'

Depth: Flush (corner 2) Four inches below adjacent road surface (corner 1)

Indiana tie card references:

IN02_T20NR1W25_36 IN02_T20NR1E30_44

CORNER WITNESS DETAIL

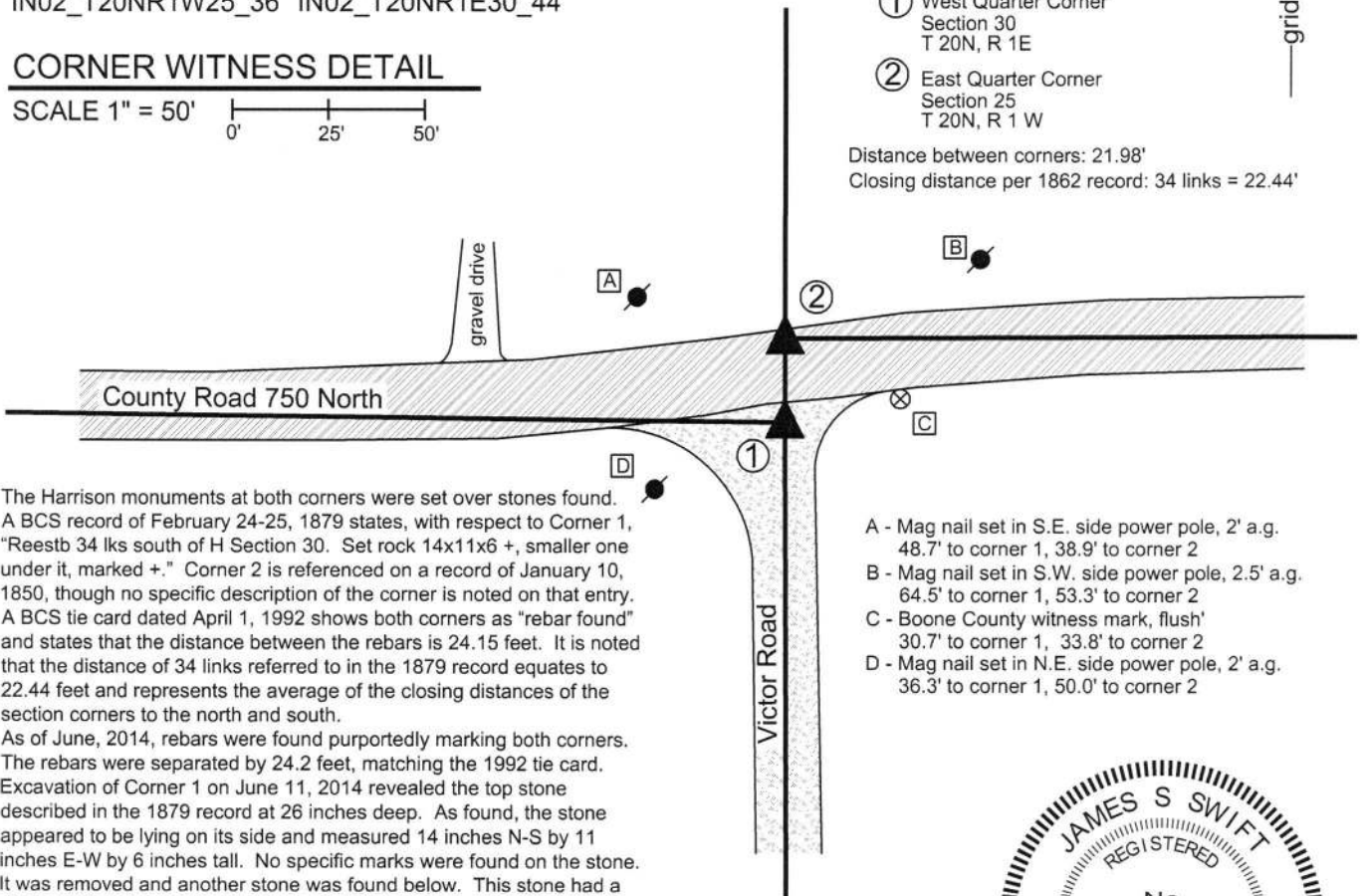
SCALE 1" = 50'

① West Quarter Corner
Section 30
T 20N, R 1E

② East Quarter Corner
Section 25
T 20N, R 1W

Distance between corners: 21.98'

Closing distance per 1862 record: 34 links = 22.44'

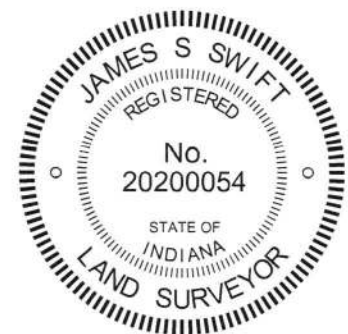


The Harrison monuments at both corners were set over stones found. A BCS record of February 24-25, 1879 states, with respect to Corner 1, "Reestb 34 lks south of H Section 30. Set rock 14x11x6 +, smaller one under it, marked +." Corner 2 is referenced on a record of January 10, 1850, though no specific description of the corner is noted on that entry. A BCS tie card dated April 1, 1992 shows both corners as "rebar found" and states that the distance between the rebars is 24.15 feet. It is noted that the distance of 34 links referred to in the 1879 record equates to 22.44 feet and represents the average of the closing distances of the section corners to the north and south.

As of June, 2014, rebars were found purportedly marking both corners. The rebars were separated by 24.2 feet, matching the 1992 tie card. Excavation of Corner 1 on June 11, 2014 revealed the top stone described in the 1879 record at 26 inches deep. As found, the stone appeared to be lying on its side and measured 14 inches N-S by 11 inches E-W by 6 inches tall. No specific marks were found on the stone. It was removed and another stone was found below. This stone had a distinct "+" mark etched on the north, sloping side of the rock, which measured 7 inches E-W by 8 inches N-S with the top 3 inches exposed. The two stones were accepted as being the same monuments described in the 1879 record. The top stone was removed and a Harrison monument was set directly above the top, high point of the lower stone, slightly south of the etched "+" mark. The rebar, removed during excavation, had been 1.8 feet north and 1.2 feet west of this point. Excavation of Corner 2 on April 14, 2016 revealed a stone found at 7 inches deep. With 5 inches of the top of the stone exposed, it measured 5 inches N-S by 8 inches E-W. The stone was embedded in the clay layer below the road, protruding approximately 3 inches into the bottom of the road bed. The stone does have a distinct top, high point but no marks were found etched on the stone. The top, high point of the stone was slightly closer to top, high point of the lower stone found at Corner 1 than called for in the 1879 record, though the whole physical rocks were within the same 34 link distance called for in that record. This stone was held as marking Corner 2 and a Harrison Monument was set over the top, high point of the stone. This point falls along or very close to the Second Principal Meridian, as defined by the stone at Corner 1 and a wood post at the standard corner 1/2 mile north. The rebar, removed during excavation, had been 3.0 feet north and 0.6 foot west of the point held as the corner.

Corner 1 was originally established as a wood post in 1819. Corner 2 is not an original federal corner.

- A - Mag nail set in S.E. side power pole, 2' a.g. 48.7' to corner 1, 38.9' to corner 2
- B - Mag nail set in S.W. side power pole, 2.5' a.g. 64.5' to corner 1, 53.3' to corner 2
- C - Boone County witness mark, flush' 30.7' to corner 1, 33.8' to corner 2
- D - Mag nail set in N.E. side power pole, 2' a.g. 36.3' to corner 1, 50.0' to corner 2



Kenneth E. Hedge, County Surveyor

James S. Swift, IN LS 20200054
March 23, 2017

Washington Township	Clinton Township
Section 25 T20N, R1W	Section 30 T20N, R1E



SECTION CORNER RECORD

NW 800-000

BOONE COUNTY SURVEYOR'S OFFICE

State Plane grid coordinates NAD83 (2011):

Corner 1: North: 1787860.94 East: 3124774.64 (U.S. survey feet)

Corner 2: North: 1787871.50 East: 3124774.61 (U.S. survey feet)

Corner 1: Harrison, 4" disk 'Section Corner', 6" a.g.

Corner 2: 5/8" rebar with metal cap stamped 'Boone County Surveyor' 4" a.g.

Indiana tie card references:

IN02_T20NR1W24_80 IN02_T20NR1E19_72

IN02_T20NR1W25_08 IN02_T20NR1E30_00

CORNER WITNESS DETAIL

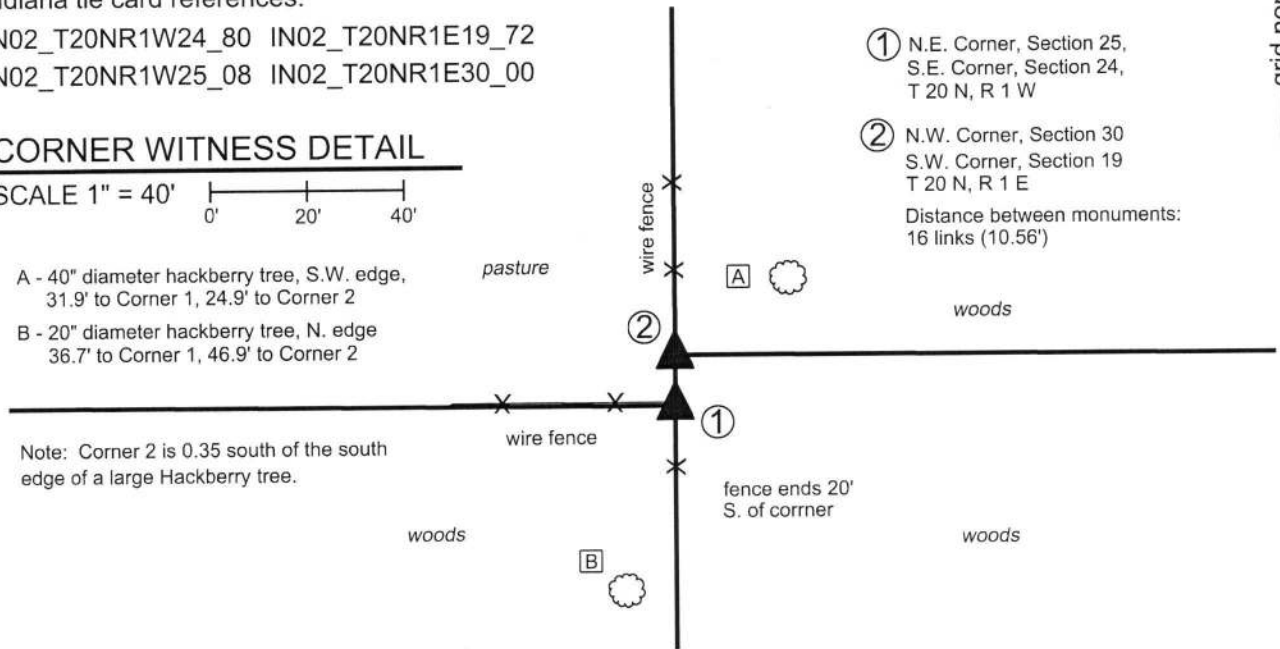
SCALE 1" = 40'



A - 40" diameter hackberry tree, S.W. edge, 31.9' to Corner 1, 24.9' to Corner 2

B - 20" diameter hackberry tree, N. edge 36.7' to Corner 1, 46.9' to Corner 2

Note: Corner 2 is 0.35 south of the south edge of a large Hackberry tree.



① N.E. Corner, Section 25, S.E. Corner, Section 24, T 20 N, R 1 W

② N.W. Corner, Section 30 S.W. Corner, Section 19 T 20 N, R 1 E

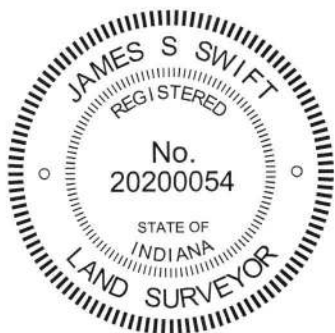
Distance between monuments: 16 links (10.56')

The Harrison monument was set in place of a stone found.

No specific descriptions of these corners were found in the BCS Surveyor's Record beyond the original establishment of the Corner 1 as a wood post set in 1819 and Corner 2 as a wood post set 16 links north of Corner 1 in 1822. No recent BCS tie cards were found nor were any surveys found in the Boone County Recorder's Office which reference the corners.

This corner was excavated on April 26 and May 8, 2019. Prior to excavation, a wood corner post was found at the intersection of ancient fences to the north, south and west, representing the visible evidence of Corner 1. No evidence of Corner 2 was visible beyond the fence bearing north from Corner 1. As found, the post was no longer attached to the ground with the top part of the post suspended amidst standing fencing and supported by a brace to the west. This portion of the post was separated from the base which remains in the ground. Excavation around the post revealed a stone which bore the characteristics of a purposely set corner stone found at the south edge of the post. The stone was slightly below flush. It was vertical and oriented in cardinal directions with a distinct high point. The stone measured 9 inches tall by 7 inches north-south by 5 inches east-west. No specific marks or etchings were found on the stone. No other stones or hard objects were found around the post. The position of the stone fits reasonably well with the relative positions of proximate corners. The adjacent deed descriptions call for the aliquot lines. No evidence was found to indicate that the stone was not in the position of the corner and the stone was accepted as the best available evidence of the corner. The stone was removed and replaced with a Harrison monument in the same position on May 8, 2019.

The position of Corner 2 was computed at 16 links north of the stone, on the line defined by Corner 1 and the standard corner 1/2 mile north (see BCS Corner NW-850-000). This position falls at the south edge of a large hackberry tree. Probing and minor excavation in this vicinity revealed no further evidence of the corner. As note above, no evidence of occupation was observed bearing east from the vicinity of Corner 2. The computed position was held for this corner and a 36 inch length of 5/8 inch diameter rebar with a metal cap stamped 'Boone County Surveyor' was set at this position on May 8, 2019.



Kenneth E. Hedge
 Kenneth E. Hedge, County Surveyor

James S. Swift
 James S. Swift, IN LS 20200054
 May 29, 2019

Washington Township Clinton Township

Section 24 T20N, R1W	Section 19 T20N, R1E
Section 25 T20N, R1W	Section 30 T20N, R1E

SECTION CORNER RECORD

NW 800-100

BOONE COUNTY SURVEYOR'S OFFICE

State Plane grid coordinates NAD83 (CORSS96):

North: 1787910.37 East: 3119517.40 (U.S. survey feet)

Type of monument: Harrison, 4" disk 'Section Corner'

Depth: One inch below adjacent road surface

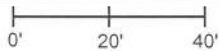
Indiana tie card references:

IN02_T20NR1W23_80 IN02_T20NR1W24_72

IN02_T20NR1W26_08 IN02_T20NR1W25_00

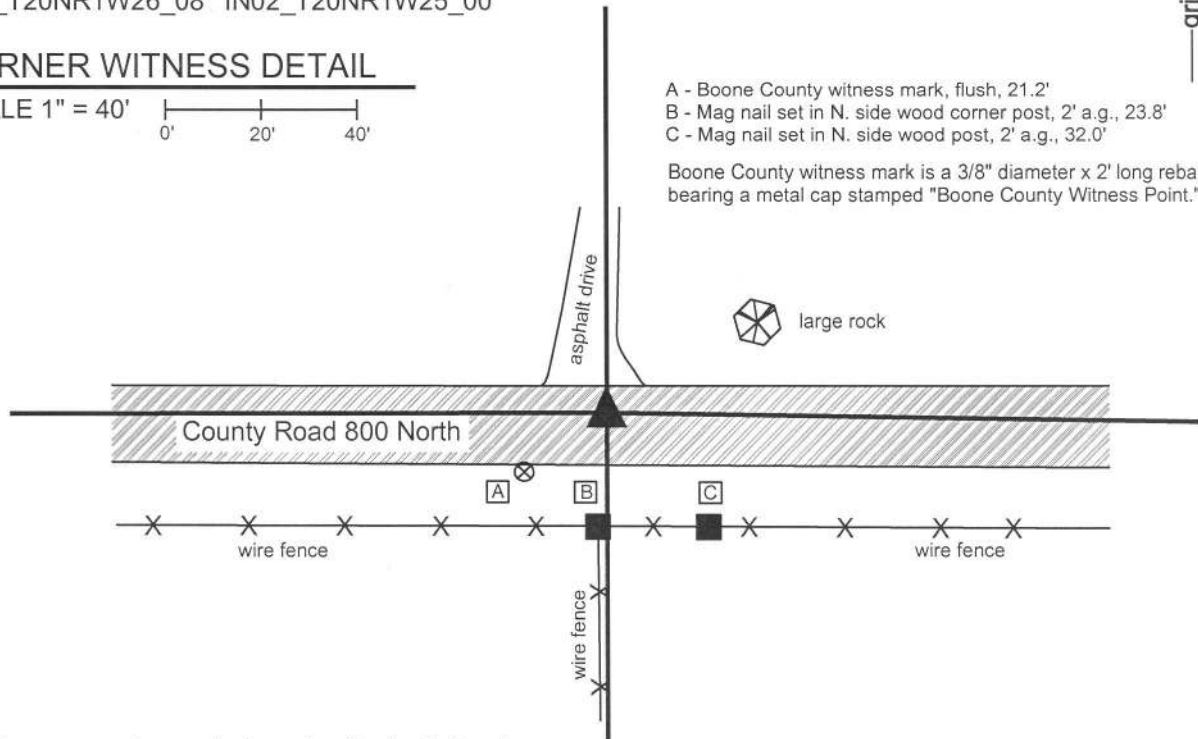
CORNER WITNESS DETAIL

SCALE 1" = 40'



- A - Boone County witness mark, flush, 21.2'
- B - Mag nail set in N. side wood corner post, 2' a.g., 23.8'
- C - Mag nail set in N. side wood post, 2' a.g., 32.0'

Boone County witness mark is a 3/8" diameter x 2' long rebar bearing a metal cap stamped "Boone County Witness Point."



The Harrison monument was set in place of a railroad spike found.

A BCS record of August 25th 1859 states, with respect to this corner, "Rock from which another Rock 48 [links], N 28 1/2 E, 60 [links]." A BCS record of August 21, 1893 states "witness rock here." No recent BCS tie cards were found referencing this corner.

Excavation was performed at this corner on June 16, 2014. Prior to excavation, a railroad spike was found at the surface of the road, slightly north of the physical center of the road. A large rock was nearby, at approximately 60 links distance. The azimuth from the railroad spike to the rock was more like 58 degrees, than 28 degrees. This rock did not bear the characteristics of a "witness stone." Excavation of an area extending 2 feet north, 2 feet east, 4.5 feet south and 4.5 feet west of the railroad spike yielded no further evidence of the corner. Excavation was performed in an area sufficiently large to include the center of the road at the approximate intersection of the fence to the south and the center of the road at 60 links distance from the aforementioned large rock. The bottom of the road bed is at approximately 1 foot, under which a grey clay layer exists to about 16 inches. From 16 inches and deeper, a brown clay exists. Excavation was performed to at least 20 inches deep. The source of the railroad spike is not known and no explanation is offered as to why the stone which was known to exist in 1859 and 1893 was not found. The railroad spike fits with with adjacent section corners, is called for as marking the corner for some adjoining properties and is believed to represent the position of the corner from which other adjacent properties were described. It is noted that a position being S28°W, 60 links from the aforementioned large rock would fall well south of the roadway and would not fit with any of the local evidence of the corner. As no contrary evidence was found, the railroad spike was held as marking the corner. The railroad spike was removed during excavation and replaced with a Harrison monument set in the same position. This corner was originally established as a wood post in 1822.



Kenneth E. Hedge
 Kenneth E. Hedge, County Surveyor

James S. Swift
 James S. Swift, IN LS 20200054
 March 27, 2015

Washington Township

Section 23 T20N, R1W	Section 24 T20N, R1W
Section 26 T20N, R1W	Section 25 T20N, R1W