

# SECTION CORNER RECORD

## BOONE COUNTY SURVEYOR'S OFFICE

NE 100-1100

State Plane grid coordinates NAD83 (NSRS 2007):

North: 1752095.57 East: 3183077.20 (U.S. survey feet)

Type of monument: Harrison, 4" disk 'Section Corner'

Depth: Six inches below adjacent gravel road surface.

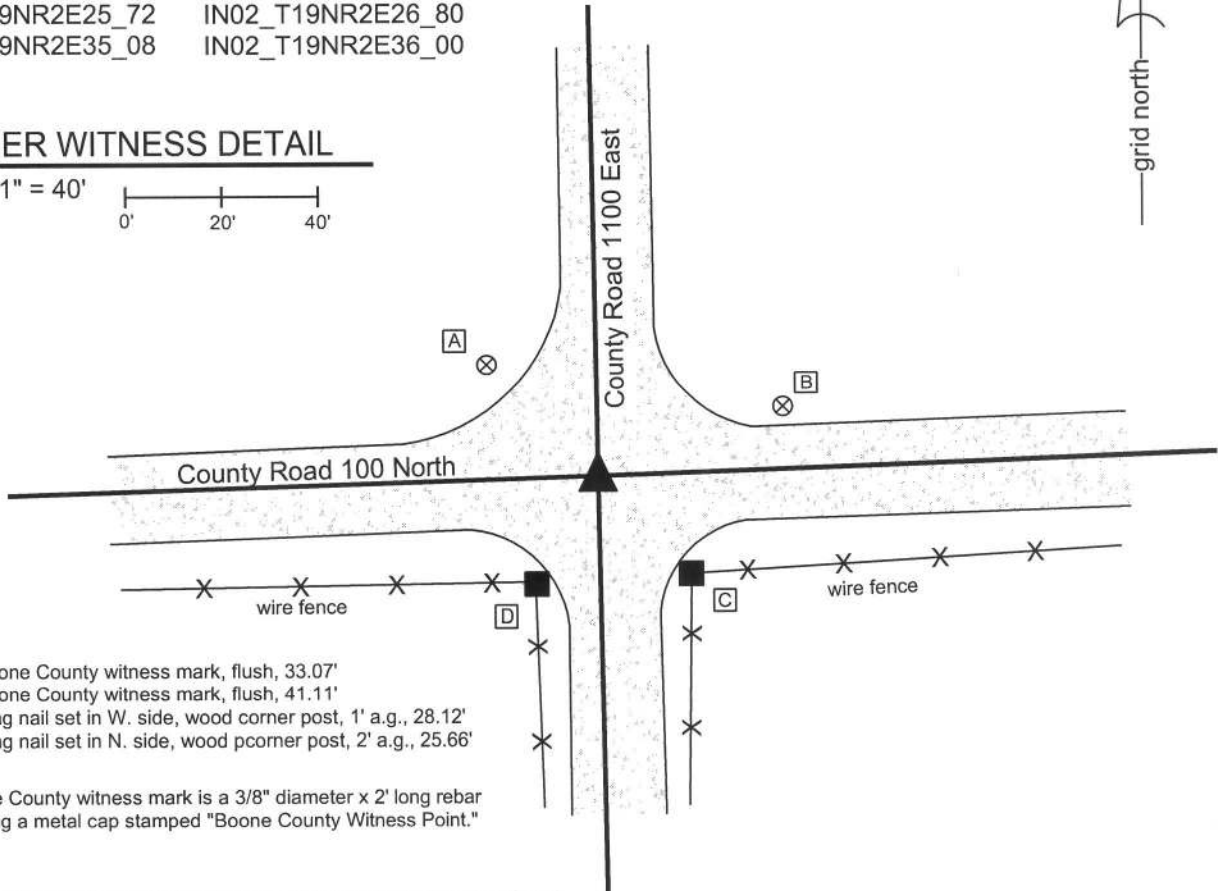
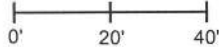
Indiana tie card references:

IN02\_T19NR2E25\_72 IN02\_T19NR2E26\_80

IN02\_T19NR2E35\_08 IN02\_T19NR2E36\_00

### CORNER WITNESS DETAIL

SCALE 1" = 40'



- A - Boone County witness mark, flush, 33.07'
- B - Boone County witness mark, flush, 41.11'
- C - Mag nail set in W. side, wood corner post, 1' a.g., 28.12'
- D - Mag nail set in N. side, wood pcorner post, 2' a.g., 25.66'

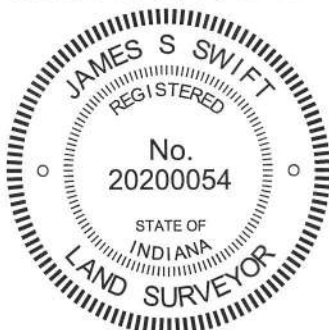
Boone County witness mark is a 3/8" diameter x 2' long rebar bearing a metal cap stamped "Boone County Witness Point."

The harrison monument was set directly over the etched "+" on a stone found.

A BCS record of October 24, 1866 states "Re-Established after having taken additional evidence. Set two Rocks, one 6.5.4 in + Mark on top. Top Rock 13.7.5 1/2 + on top." A BCS tie card dated August 7, 1974 states "No stone found."

This corner was excavated on June 18, 2010. Prior to excavation, a railroad rail was found at 4 inches deep. Excavation revealed a rock found at 24 inches deep, 1 foot west of the rail. The rock was 12 inches N-S by 10 inches E-W by 8 inches tall. A deep crease was visible on the top of the rock but did not appear to be an intentional mark. This stone did not match the description of either of the record stones and was removed. Further excavation revealed the record bottom stone found at 28 inches deep. This stone had a clearly visible etched "+" on the top. The stone matches the proportions of the record bottom stone, but was slightly larger in all dimensions. The top of the stone is approximately 10 inches deep into the clay layer below the road. A 13 inch tall stone above it would have protruded 3 inches into the bottom of the road bed, which is consistent with the depth of many other stones found. The stone was left in place and the harrison monument was set over the etched "+" on the top. The harrison is 0.9 foot north and 2.9 feet west of the position of the railroad rail, which was removed during excavation. The 1968 reference to "no stone found" indicates that a stone was searched for but not found. It is most likely that the railroad rail was set at that time, after the erroneous determination that other evidence, in the form of a stone, was not present.

This corner was originally established as a wood post in June, 1821.



*Kenneth E. Hedge*  
 Kenneth E. Hedge, County Surveyor

*James S. Swift*  
 James S. Swift, IN LS 20200054  
 July 25, 2011

Union Township

Section 26 T19N, R2E	Section 25 T19N, R2E
Section 35 T19N, R2E	Section 36 T19N, R2E

PHOTOGRAPHIC DOCUMENTATION

Date of photography: June 18, 2010

View of the stone from above.



Close-up of the stone.



For details and documentation, refer to related sheet "Section Corner Record."

# SECTION CORNER RECORD

# NE 100-1150

## BOONE COUNTY SURVEYOR'S OFFICE

State Plane grid coordinates NAD83 (NSRS 2007):

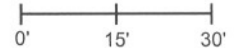
North: 1752187.42 East: 3185748.55 (U.S. survey feet)

Type of monument: Harrison, 4" disk 'Section Corner'

Depth: Six inches below adjacent gravel road surface.

### CORNER WITNESS DETAIL

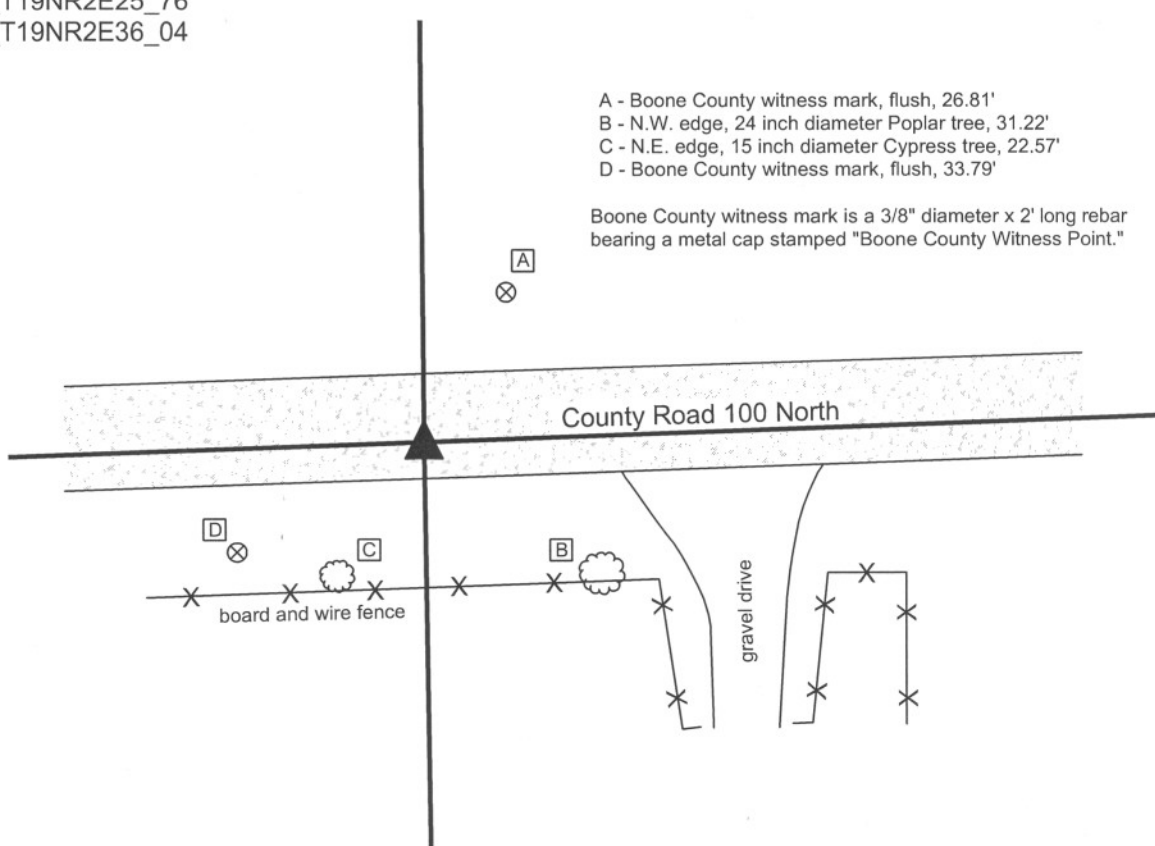
SCALE 1" = 30'



Indiana tie card references:

IN02\_T19NR2E25\_76

IN02\_T19NR2E36\_04



- A - Boone County witness mark, flush, 26.81'
- B - N.W. edge, 24 inch diameter Poplar tree, 31.22'
- C - N.E. edge, 15 inch diameter Cypress tree, 22.57'
- D - Boone County witness mark, flush, 33.79'

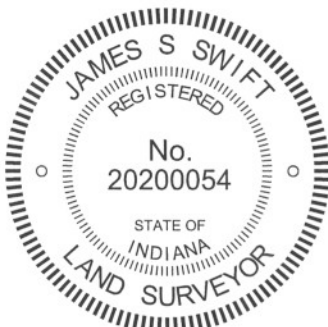
Boone County witness mark is a 3/8" diameter x 2' long rebar bearing a metal cap stamped "Boone County Witness Point."

The harrison monument was set in place of a stone found.

No specific descriptions of this corner were found in the BCS Surveyor's Record, nor were any recent tie cards found for this corner.

Prior to excavation a 5/8 inch diameter rebar with a red cap was found near the south edge of the roadway at 7 inches deep. No source information was found for this rebar and the markings on the cap were not legible. Excavation revealed a stone found at 3 inches deep, north and east of the rebar. An etched "+" was visible on the top of the stone, though the top of the stone appeared to have been scraped by a road grader and the mark was not deeply etched. The stone was 14 inches N-S by 11 inches E-W by 14 inches tall. The bottom eight inches of the stone were embedded in the clay layer below the road and the top of the stone protruded 6 inches into the bottom of the road bed. It is noted that the road appears to have been cut slightly in this area and it is estimated that the depth of the stone would have been 13 to 15 inches prior to the cut. The stone was removed and the harrison monument was set in its place. The harrison monument is 3.2 feet north and 2.0 feet east of the former position of the rebar, removed during excavation.

This corner was originally established as a wood post in June, 1821.



*Kenneth E. Hedge*  
 Kenneth E. Hedge, County Surveyor

*James S. Swift*  
 James S. Swift, IN LS 20200054

July 25, 2011

Union Township

Section 25  
T19N, R2E

▲  
 Section 36  
 T19N, R2E

# SECTION CORNER RECORD

NE 100-1200

## BOONE COUNTY SURVEYOR'S OFFICE

State Plane grid coordinates NAD83 (CORS96):

Corner 1: North: 1752280.02 East: 3188412.48 (U.S. survey feet)  
 Corner 2: North: 1752246.68 East: 3188412.40 (U.S. survey feet)

Type of monument: Harrison, 4" disk 'Section Corner'  
 Depth: One inch below adjacent road surface

Indiana tie card references:

IN02\_T19NR2E25\_80 IN02\_T19NR3E30\_72  
 IN02\_T19NR2E36\_08 IN02\_T19NR3E31\_00

- ① S.E. Corner, Section 25  
 N.E. Corner, Section 36  
 T 19 N, R 2 E  
 Boone County corner
- ② S.W. Corner, Section 30  
 N.W. Corner, Section 31  
 T 19 N, R 3 E  
 Hamilton County corner

Distance between monuments: 33.33'  
 Original federal closing: 50 links (33')

### CORNER WITNESS DETAIL

SCALE 1" = 40'

- A - Mag nail in S. side power pole, 1.5' a.g.,  
 56.45' to corner 1, 93.53' to corner 2
- B - Boone County witness mark, flush,  
 45.97' to corner 1, 78.82 to corner 2
- C - Mag nail set in S.W. side power pole, 1.8' a.g.,  
 132.52' to corner 1, 99.56' to corner 2
- D - Boone County witness mark, flush  
 83.55' to corner 1, 50.80' to corner 2
- E - Mag nail in N. side power pole, 8 in. a.g.  
 32.34' to corner 1, 18.00' to corner 2

Boone County witness mark is a 3/8" diameter x 2' long rebar bearing a metal cap stamped "Boone County Witness Point."

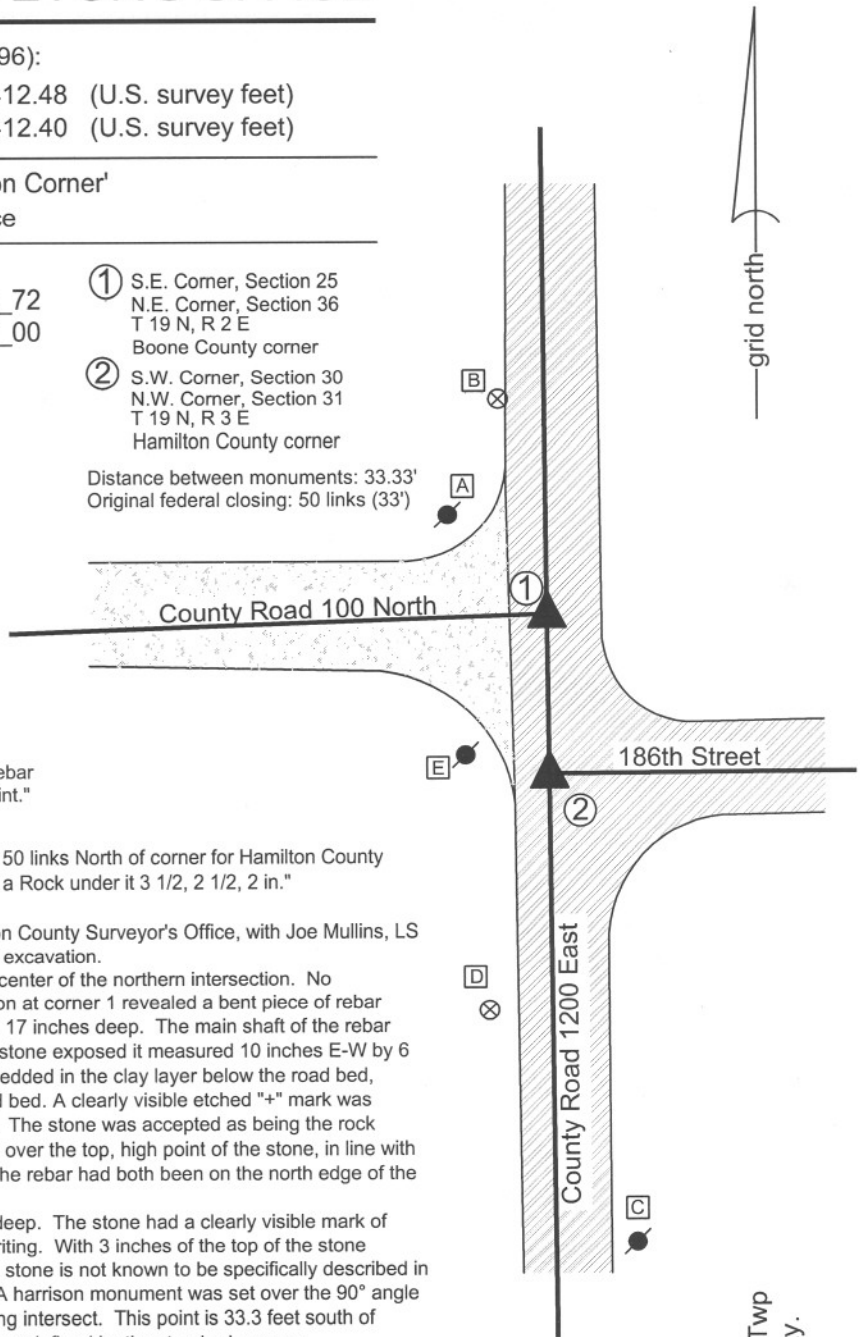
The harrison monuments were set over stones found.

A BCS record of October 23-24, 1866 states "Reestablished 50 links North of corner for Hamilton County found a stake where set Rock 20.11 by 7 in. marked + place a Rock under it 3 1/2, 2 1/2, 2 in."  
 A BCS tie card dated August 14, 1967 states "no stone."

Both corners were excavated in cooperation with the Hamilton County Surveyor's Office, with Joe Mullins, LS and other representatives of that office present at the time of excavation.

Prior to excavation, a nail was found at 3 inches deep in the center of the northern intersection. No monument was found at the southern intersection. Excavation at corner 1 revealed a bent piece of rebar below the nail. Further excavation revealed a stone found at 17 inches deep. The main shaft of the rebar was along the north edge of the stone. With 8 inches of the stone exposed it measured 10 inches E-W by 6 inches N-S. The stone appeared to be vertical and well embedded in the clay layer below the road bed, protruding approximately 4 inches into the bottom of the road bed. A clearly visible etched "+" mark was visible on the west side of the stone, 3 inches below the top. The stone was accepted as being the rock described in the 1866 record. A harrison monument was set over the top, high point of the stone, in line with the etched "+" on the west side. The nail and main shaft of the rebar had both been on the north edge of the stone, 3 inches north of the top, center.

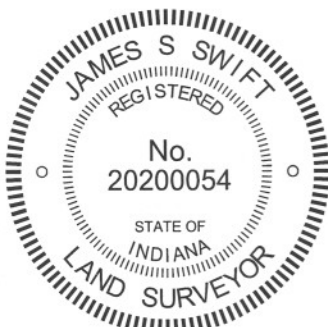
Excavation at corner 2 revealed a stone found at 20 inches deep. The stone had a clearly visible mark of "S31" with lines etched on the north and west sides of the writing. With 3 inches of the top of the stone exposed, it measured 10 inches N-S by 8 inches E-W. This stone is not known to be specifically described in the Hamilton County records, but clearly marks the corner. A harrison monument was set over the 90° angle point where the lines on the north and west sides of the writing intersect. This point is 33.3 feet south of corner 1 and is approximately 0.4 foot west of the range line as defined by the standard corners.



Union Twp.  
Boone Cnty.

Washington Twp  
Hamilton Cnty.

Section 25 T19N, R2E	Section 30 T19N, R3E
Section 36 T19N, R2E	Section 31 T19N, R3E



*Kenneth E. Hedge*  
 Kenneth E. Hedge, County Surveyor

*James S. Swift*  
 James S. Swift, IN LS 20200054  
 January 15, 2013

PHOTOGRAPHIC DOCUMENTATION

Date of photography: July 17, 2012

View of the stone at the Boone County corner (corner 1) and the adjacent rebar from the north.



View of the stone at corner 1 from above and from the west.



View of the stone at corner 1 from the north, looking south across the Hamilton County corner and along the County Line Road.



The stone at the Hamilton County corner (corner 2) as found.



The stone at corner 2 with paint.



For details and documentation, refer to related sheet "Section Corner Record."

# SECTION CORNER RECORD

# NE 150-1100

## BOONE COUNTY SURVEYOR'S OFFICE

State Plane grid coordinates NAD83 (NSRS 2007):

North: 1754739.35 East: 3183033.25 (U.S. survey feet)

Type of monument: Harrison, 4" disk 'Section Corner'

Depth: six inches below adjacent gravel road surface

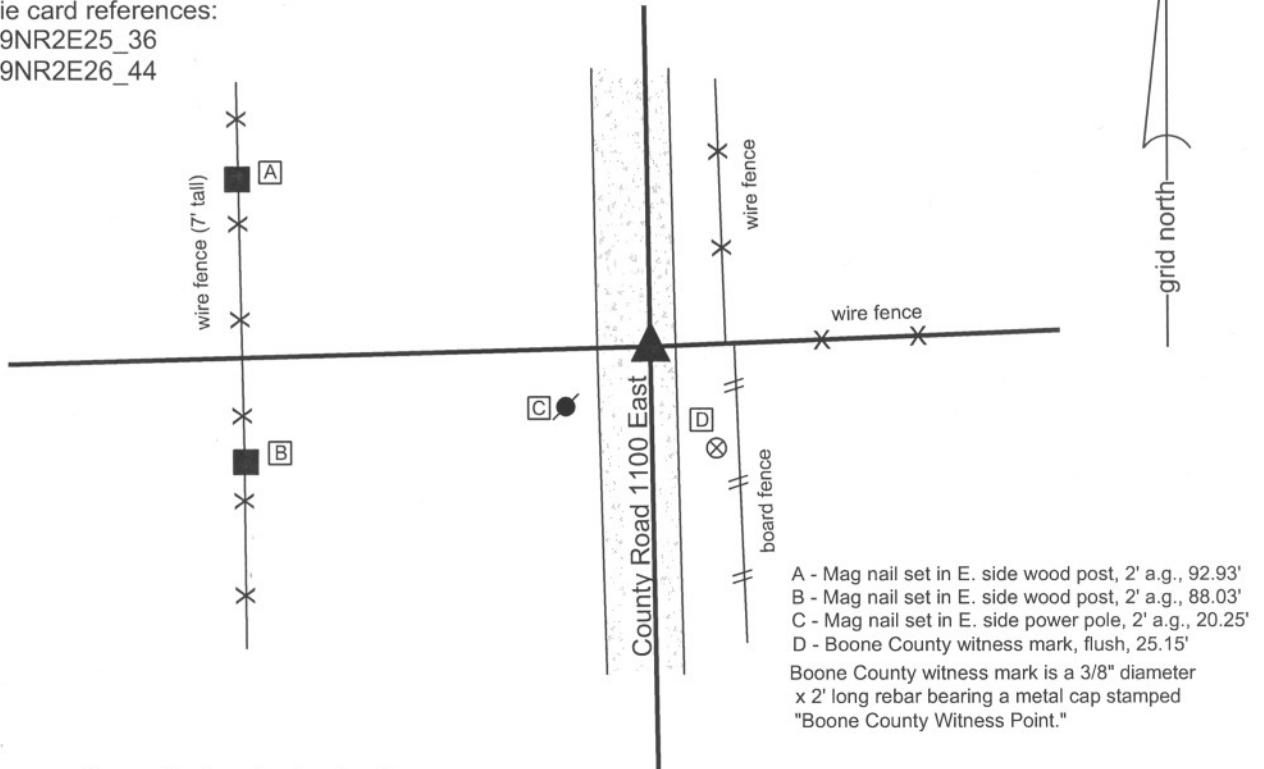
Indiana tie card references:

IN02\_T19NR2E25\_36

IN02\_T19NR2E26\_44

### CORNER WITNESS DETAIL

SCALE 1" = 40'

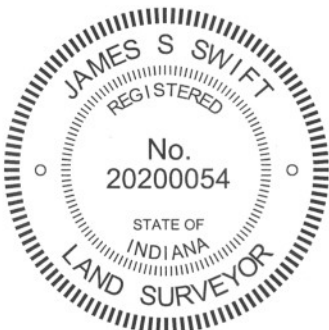


- A - Mag nail set in E. side wood post, 2' a.g., 92.93'
  - B - Mag nail set in E. side wood post, 2' a.g., 88.03'
  - C - Mag nail set in E. side power pole, 2' a.g., 20.25'
  - D - Boone County witness mark, flush, 25.15'
- Boone County witness mark is a 3/8" diameter x 2' long rebar bearing a metal cap stamped "Boone County Witness Point."

The harrison monument was set in place of a stone found.

A BCS record of April 22, 1863 states "Reestablished set two Rock. One 8.7.5 in marked +. Top rock 14.9.5 in marked 1/4 S." A BCS tie card dated August 7, 1974 states "stone found." This corner was excavated on August 16, 2010. Prior to excavation a rebar was found at 9 inches deep. Excavation revealed a railroad spike found at approximately 11 inches deep on the northeast edge of the rebar. Further excavation revealed the record stone found at approximately 16 inches deep, directly below the rebar and railroad spike. The stone measured 9 inches N-S, 5 inches E-W by 14 inches tall. The stone had a clearly visible "+" etched on the top high point, near the south edge. The stone also had the marking "1/4 S" etched on the west side, and was fully embedded in the clay layer below the road. The stone was removed and another stone was found below it. The lower stone was not disturbed and was not measured. The position of the record stones fit with the distance tie to a telephone cable pole shown on the 1974 tie card. The harrison monument was set over the lower stone, in place of the upper stone, at the specific position of the etched "+" and high point of the upper stone. It is noted that at most corners documented in 1974 with the statement "stone found" it has been discovered that the stone was removed and replaced with a metal monument. This corner appears to be an exception to that practice from that year as the record stone was left in place.. Another stone was also found approximately 14 inches east of the record stone. This stone was at approximately 7 inches below grade, measuring 11 inches tall by 6 by 8 inches. This stone was mostly in the material of the road bed, with only the bottom few inches in the clay layer. The stone did have a clearly visible "+" etched on the top and had been painted pink, indicating that it has been found recently by a field surveyor. Although this stone had a visible mark, it was not embedded in the clay layer below the road, as is typical of an ancient cornerstone. Given the presence of the record stone from 1863, the easterly stone was removed.

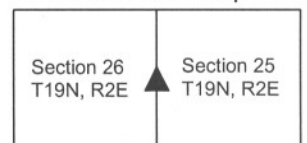
This corner was originally established as a wood post in June or July, 1821.



*Kenneth E. Hedge*  
 Kenneth E. Hedge, County Surveyor

*James S. Swift*  
 James S. Swift, IN LS 20200054  
 July 25, 2011

Union Township



# SECTION CORNER RECORD

# NE 150-1200

## BOONE COUNTY SURVEYOR'S OFFICE

① East Quarter Corner,  
Section 25, T 19 N, R 2 E

② West Quarter Corner  
Section 30, T 17 N, R 2 E

Distance between monuments = 39.25'

State Plane grid coordinates NAD83 (2011):

Corner 1: North: 1754947.35 East: 3188390.36 (U.S. survey feet)

Corner 2: North: 1754908.10 East: 3188390.69 (U.S. survey feet)

Type of monument: Harrison, 4" disk 'Section Corner'

Depth: One inch below adjacent road surface

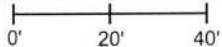
Indiana tie card references:

IN02\_T19NR2E25\_44

IN02\_T19NR3E30\_36

### CORNER WITNESS DETAIL

SCALE 1" = 40'



- A - Boone County witness mark, flush  
27.9' to corner 1, 65.8' to corner 2
- B - Mag nail set in E. side power pole, 6 inches a.g.  
18.0' to corner 1, 42.3' to corner 2
- C - N.E. corner, stone mailbox  
51.4' to corner 1, 16.0' to corner 2
- D - Chisel mark in top of guard rail post  
58.5' to corner 1, 22.5' to corner 2

The Harrison monument at Corner 2 was set over a stone found in cooperation with the Hamilton County Surveyor's Office in July, 2012. The Harrison monument at Corner 2 was set in place of a Mag spike in October, 2015.

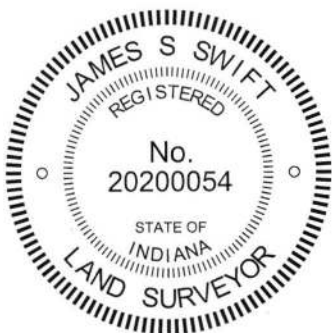
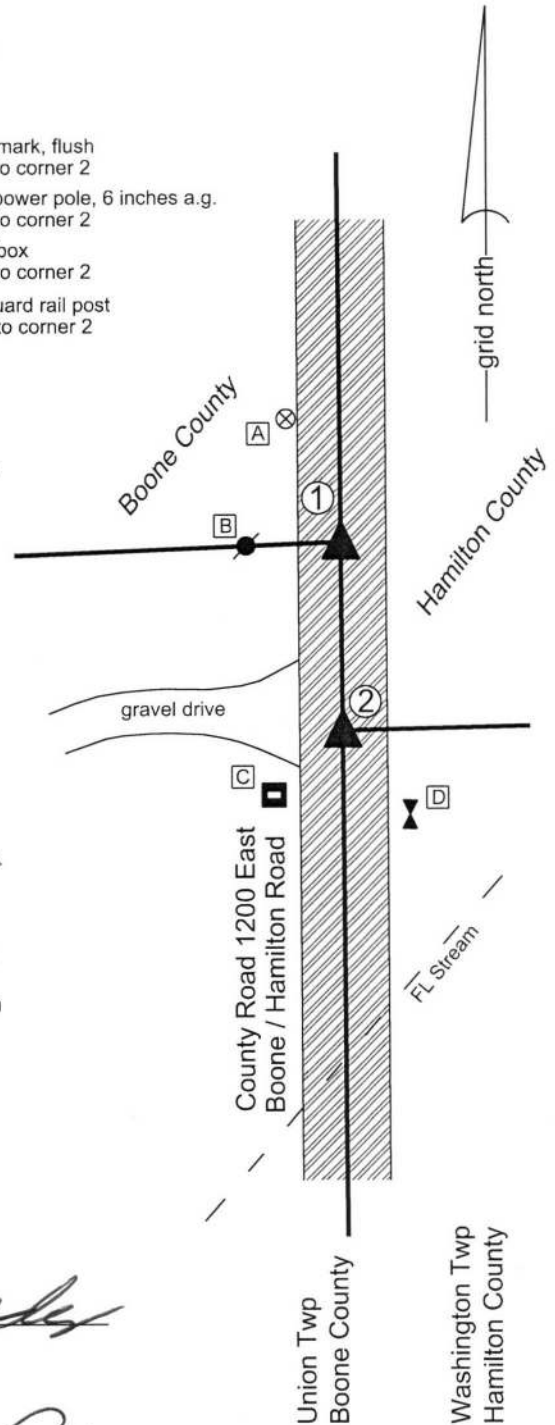
A BCS record dated May 6, 1872 states, with respect to this corner, "Fnd. 59 links north of corner for Hamilton County. No records of stones at this corner were found in the Hamilton County records.

Excavation at both of these corners took place on July 16, 2012 in cooperation with Joseph Mullins, LS, and other representatives of the Hamilton County Surveyor's Office. Prior to excavation, a mag nail was found 3 inches deep in the road near Corner 1. No monumentation was found marking Corner 2. Excavation at Corner 1 revealed a 1 inch diameter iron pipe found south and east of the found Mag nail at 5 inches deep. Excavation of an area extending 2 feet north, 3 feet south, 3.5 feet east and 1.5 feet west of the mag nail revealed no further evidence of the corner.

An approximate position for Corner 2 was established at 59 links (38.94 feet) south of the found iron pipe. Excavation at this position revealed a stone found at 2 feet deep. With the top 5 inches of the stone exposed, it measured 10 inches N-S by 8 inches E-W. No specific marks were found on the stone but it appeared to be vertical and was clearly oriented in cardinal directions. The stone was accepted as marking Corner 2, the Hamilton County corner. Corner 1 was established on the range line as defined by Corner 2 and the standard corner approximately 1/2 mile south (See BCS corner NE-100-1200) at the same distance north from the stone as the found iron pipe, which is very close to the record closing of 59 links. A mag spike was set at this position temporarily in 2012 and was replaced with a Harrison monument on October 5, 2015. No documentation was published for this corner at that time.

The mag nail found near Corner 1 prior to excavation had been 1.5 feet west and 1.3 feet north of the point established as the corner.

Corner 1 was originally established as a wood post in 1819.



*Kenneth E. Hedge*  
Kenneth E. Hedge, County Surveyor

*James S. Swift*  
James S. Swift, IN LS 20200054  
July 31, 2019

Section 25 T19N, R2E	Section 30 T17N, R2E
-------------------------	-------------------------

# SECTION CORNER RECORD

NE 200-1100

## BOONE COUNTY SURVEYOR'S OFFICE

State Plane grid coordinates NAD83 (NSRS 2007):

North: 1757380.00 East: 3182991.00 (U.S. survey feet)

Type of monument: Harrison, 4" disk 'Section Corner'

Depth: One inch below adjacent road surface

Indiana tie card references:

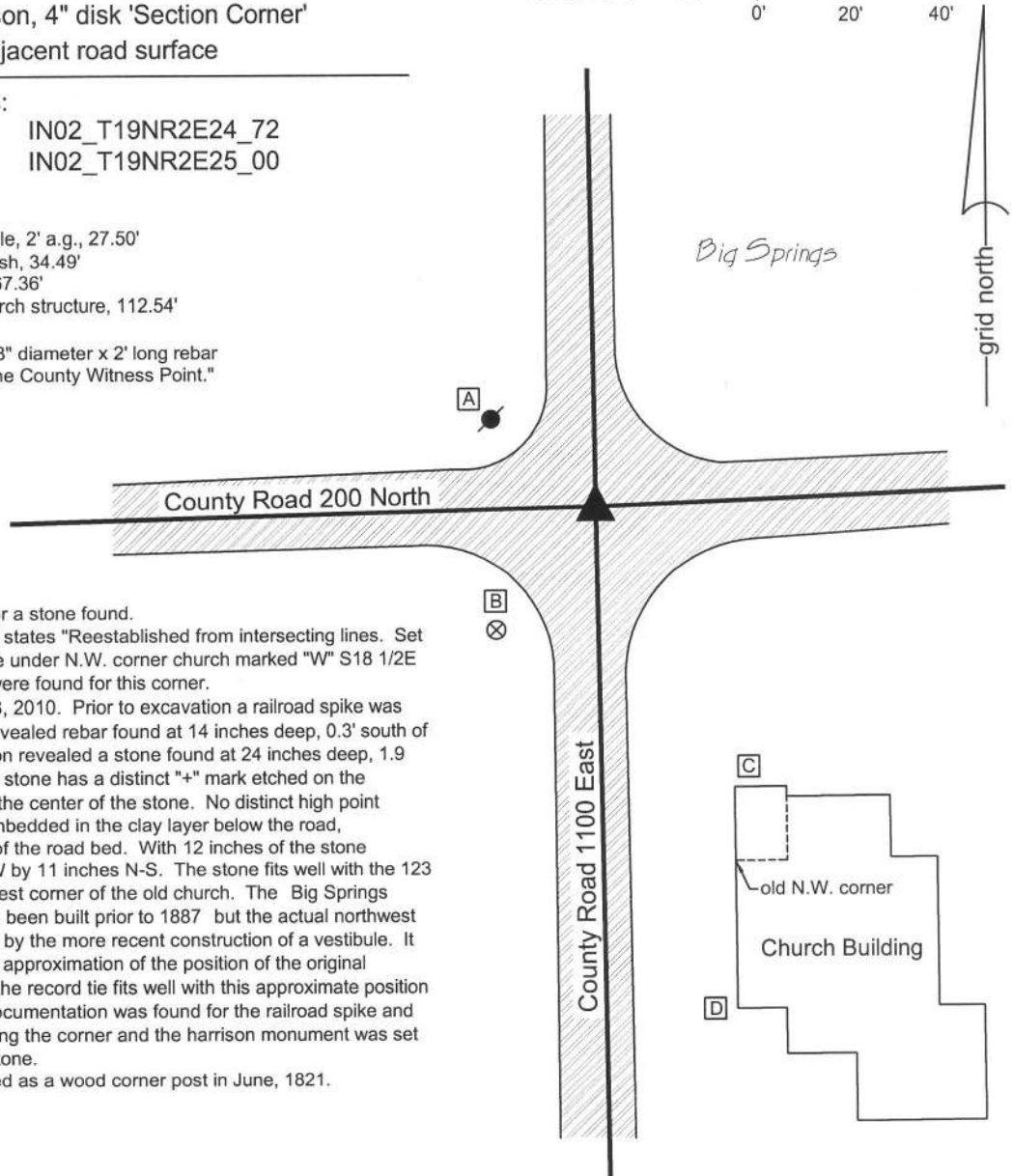
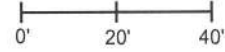
IN02\_T19NR2E23\_80      IN02\_T19NR2E24\_72  
IN02\_T19NR2E24\_08      IN02\_T19NR2E25\_00

- A - Mag nail set in S. side power pole, 2' a.g., 27.50'
- B - Boone County witness mark, flush, 34.49'
- C - N.W. corner, church vestibule, 67.36'
- D - Southwesterly corner, main church structure, 112.54'

Boone County witness mark is a 3/8" diameter x 2' long rebar bearing a metal cap stamped "Boone County Witness Point."

### CORNER WITNESS DETAIL

SCALE 1" = 40'

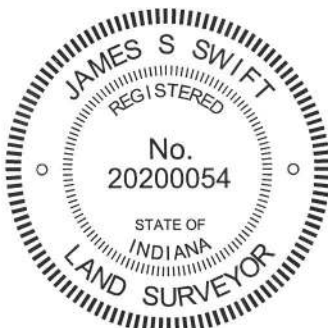


The harrison monument was set over a stone found.

A BCS record of September 5, 1887 states "Reestablished from intersecting lines. Set a rock 27,11,15 +. Foundation stone under N.W. corner church marked "W" S18 1/2E 123 1/2." No recent BCS tie cards were found for this corner.

This corner was excavated on July 8, 2010. Prior to excavation a railroad spike was visible at the surface. Excavation revealed rebar found at 14 inches deep, 0.3' south of the railroad spike. Further excavation revealed a stone found at 24 inches deep, 1.9 feet south of the railroad spike. The stone has a distinct "+" mark etched on the sloping south side at approximately the center of the stone. No distinct high point exists on the stone. The stone is embedded in the clay layer below the road, protruding 2 inches into the bottom of the road bed. With 12 inches of the stone exposed, it measures 11 inches E-W by 11 inches N-S. The stone fits well with the 123 1/2 link (81.51 feet) tie to the northwest corner of the old church. The Big Springs Community Church appears to have been built prior to 1887 but the actual northwest corner of the old church is obscured by the more recent construction of a vestibule. It is possible to estimate a reasonable approximation of the position of the original northwest corner of the church and the record tie fits well with this approximate position of the building corner. No source documentation was found for the railroad spike and rebar. The stone was held as marking the corner and the harrison monument was set directly over the etched "+" on the stone.

This corner was originally established as a wood corner post in June, 1821.



*Kenneth E. Hedge*  
 Kenneth E. Hedge, County Surveyor

*James S. Swift*  
 James S. Swift, IN LS 20200054  
 July 25, 2011, Revised March 18, 2013

Marion Twp	Section 23 T19N, R2E	Section 24 T19N, R2E
Union Twp	Section 26 T19N, R2E	Section 25 T19N, R2E



PHOTOGRAPHIC DOCUMENTATION

Date of photography: July 8, 2010

View of the stone from the south.



View of the stone from the south, showing mark.



View from above the stone looking east along County Road 200 North.



View of the stone from the north.



Big Springs Community Church, from above the stone at the time of excavation.



For details and documentation, refer to related sheet "Section Corner Record."

# SECTION CORNER RECORD

## BOONE COUNTY SURVEYOR'S OFFICE

NE 200-1150

State Plane grid coordinates NAD83 (CORS96):  
 North: 1757497.06 East: 3185675.34 (U.S. survey feet)

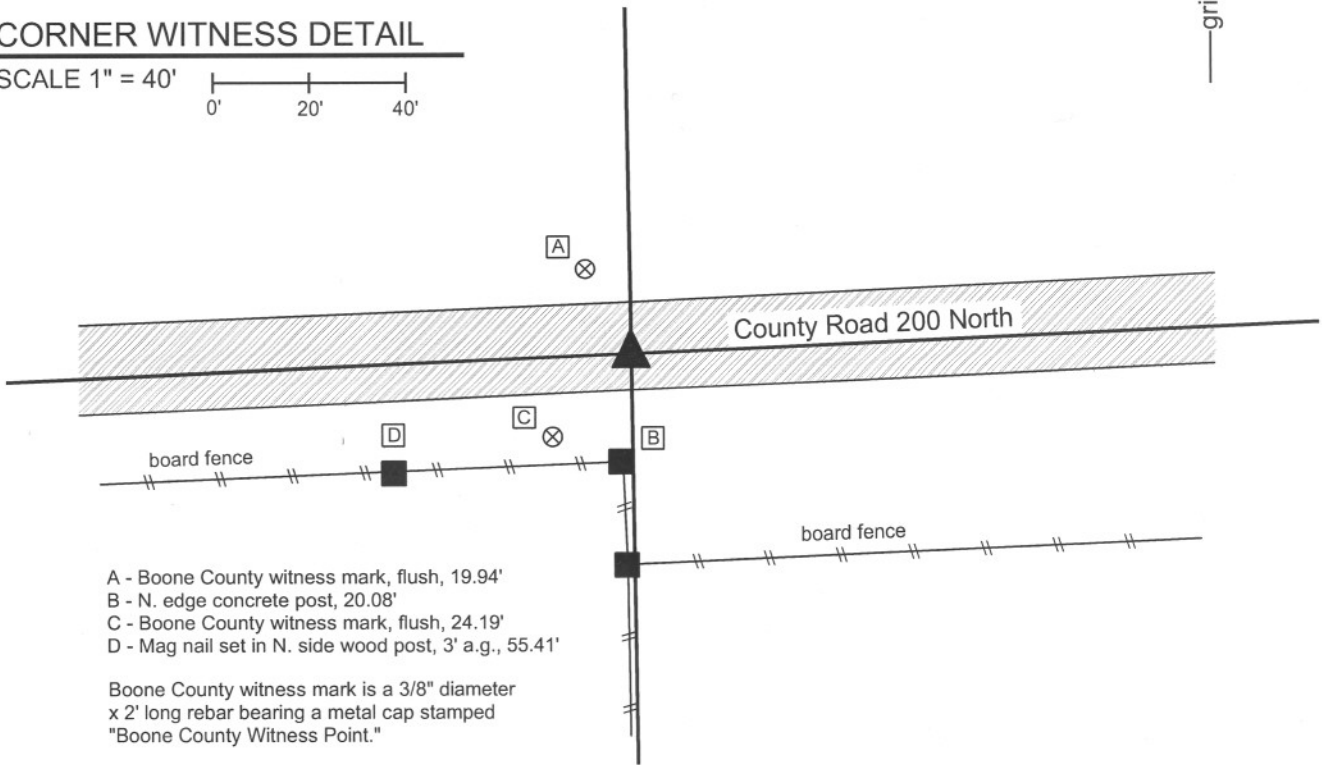
Type of monument: Harrison, 4" disk 'Section Corner'  
 Depth: One inch below adjacent road surface

Indiana tie card references:  
 IN02\_T19NR2E24\_76  
 IN02\_T19NR2E25\_04



### CORNER WITNESS DETAIL

SCALE 1" = 40'

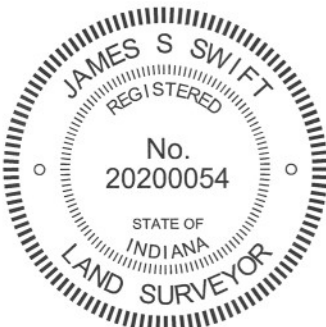


- A - Boone County witness mark, flush, 19.94'
- B - N. edge concrete post, 20.08'
- C - Boone County witness mark, flush, 24.19'
- D - Mag nail set in N. side wood post, 3' a.g., 55.41'

Boone County witness mark is a 3/8" diameter x 2' long rebar bearing a metal cap stamped "Boone County Witness Point."

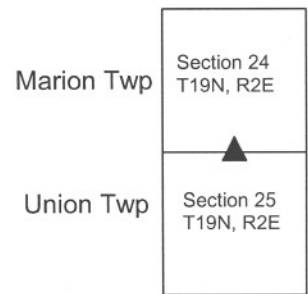
The harrison monument was set over a stone found.

A BCS record of May 6, 1872 states "Traced the line G to f twice its distance to F were found the stake and Reestablished the corner. Set two Rocks one 11.9.6 +. Top one 16.12.9 +." A BCS tie card dated August 6, 1872 states "no stone found."  
 This corner was excavated on April 13, 2011. Prior to excavation a mag nail was found 1 inch deep in a chiseled hole in the asphalt. Excavation revealed a 1/2 inch diameter rebar found at 7 inches deep, 0.2 foot north of the nail. Further excavation revealed the top stone described in the 1872 record at 11 inches deep. With 8 inches of the top of the stone exposed, the stone measures 12 inches E-W by 8 inches N-S with a chiseled "+" on the top, center. The chiseled mark is worn, but is but visible. The stone is embedded in the clay layer below the road, protruding 2 inches into the bottom of the road bed. With 8 inches exposed the stone remained entirely stable in the clay. The total height of the stone was not measured. The stone was left in place and a harrison monument was set directly over the chiseled "+" on the top of the rock. The nail, removed during excavation, had been 1.1 feet south and 1.8 feet west of the stone. The rebar was also removed during excavation.  
 This corner was originally established as a wood post in July, 1821.



*Kenneth E. Hedge*  
 Kenneth E. Hedge, County Surveyor

*James S. Swift*  
 James S. Swift, IN LS 20200054  
 March 1, 2012



PHOTOGRAPHIC DOCUMENTATION

Date of photography: April 13, 2011

View of the stone as first exposed.



View of the partially exposed stone from the west.



View from above the stone, looking west along County Road 200 North.



View of the partially exposed stone from the south.



View of the stone from overhead.



For details and documentation, refer to related sheet "Section Corner Record."

# SECTION CORNER RECORD

NE 200-1200

## BOONE COUNTY SURVEYOR'S OFFICE

State Plane grid coordinates NAD83 (2011):

Corner 1: North: 1757610.43 East: 3188364.63 (U.S. survey feet)

Corner 2: North: 1757565.29 East: 3188366.10 (U.S. survey feet)

Type of monument: Harrison, 4" disk 'Section Corner'

Depth: One inch below adjacent road surface (cor. 1) flush (cor. 2)

Indiana tie card references:

IN02\_T19NR2E24\_80 IN02\_T19NR3E19\_72

IN02\_T19NR2E25\_08 IN02\_T19NR3E30\_00

### CORNER WITNESS DETAIL

SCALE 1" = 60'

- A - Mag nail set in S.E. side power pole, 2' a.g., 72.5' to corner 1, 93.4' to corner 2
- B - Mag nail set in E. side power pole, 2' a.g., 67.5' to corner 1, 111.8' to corner 2
- C - Boone County witness marker, flush, 73.4' to corner 1, 43.4' to corner 2
- D - Mag nail set in N.E. side power pole, 2' a.g., 35.1' to corner 1, 25.6' to corner 2

The Harrison monument at corner 1 was set over a stone found.

The Harrison monument at corner 2 was set by the Hamilton County Surveyor's Office over a stone found.

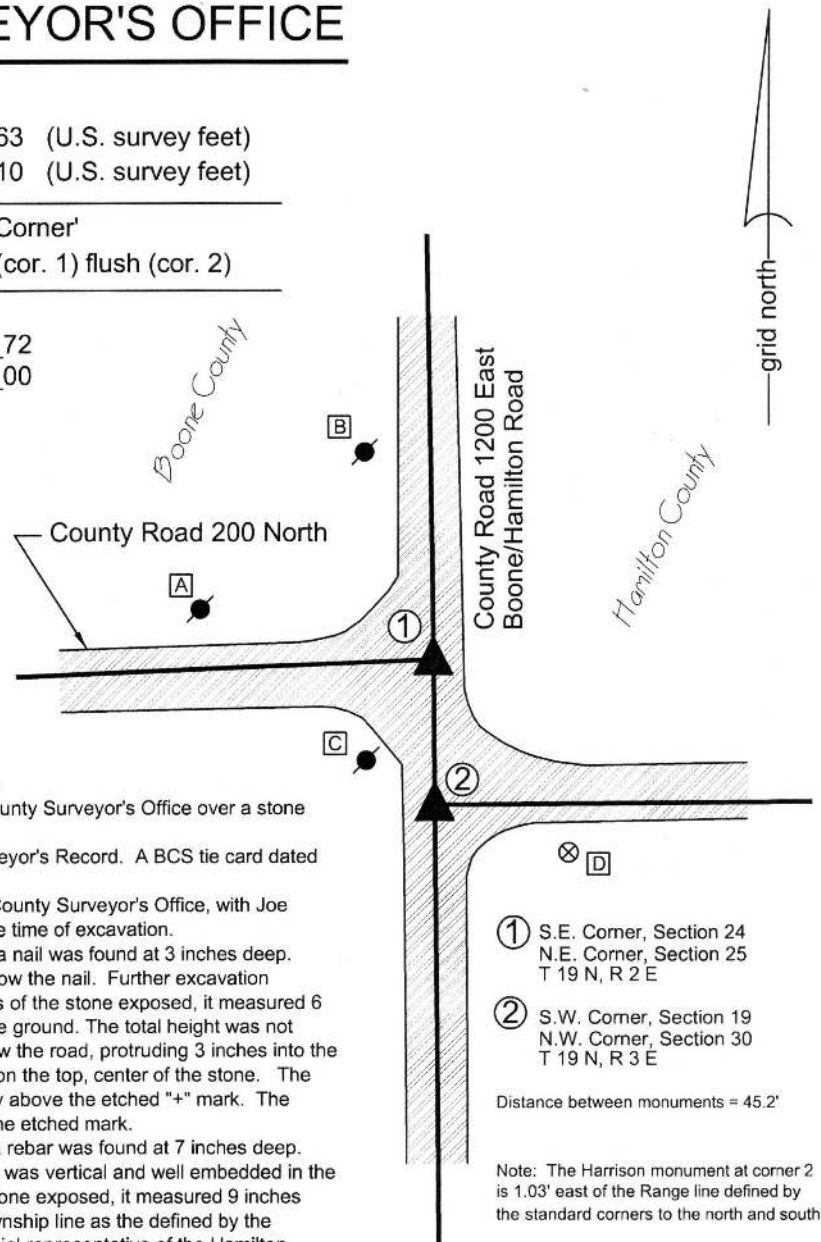
No specific descriptions of corner 1 were found in the BCS Surveyor's Record. A BCS tie card dated April 23, 1977 shows the corner as a stone 15 inches deep.

Both corners were excavated in cooperation with the Hamilton County Surveyor's Office, with Joe Mullins, LS and other representatives of that office present at the time of excavation.

Corner 1 was excavated on July 12, 2012. Prior to excavation, a nail was found at 3 inches deep. Excavation revealed a rebar found at 9 inches deep, directly below the nail. Further excavation revealed a stone found at 20 inches deep. With the top 6 inches of the stone exposed, it measured 6 inches N-S by 7 inches E-W and clearly extended further into the ground. The total height was not measured. The stone was well embedded in the clay layer below the road, protruding 3 inches into the bottom of the road bed. An etched "+" mark was clearly visible on the top, center of the stone. The nail and rebar, both removed during excavation, had been directly above the etched "+" mark. The stone was left in place and a Harrison monument was set over the etched mark.

Corner 2 was excavated on July 16, 2012. Prior to excavation a rebar was found at 7 inches deep. Excavation revealed a stone found at 22 inches deep. The stone was vertical and well embedded in the clay layer below the road bed. With 8 inches of the top of the stone exposed, it measured 9 inches N-W by 5 inches E-W. The stone is substantially east of the township line as the defined by the standard corners. At the time of excavation, Joe Mullins, as official representative of the Hamilton County Surveyor's Office agreed that the final monumentation should be placed on the range line, as defined by the stone at corner 1 and the quarter corners 1/2 mile south, along a prolongation of the line from the quarter corner 1/2 mile east (in Hamilton County) through the found stone. This would have placed the monument 1.0 foot west of the stone, and followed the same procedure as is employed throughout Boone County, of establishing the closing corner on the range line. However, in 2015 the Hamilton County Surveyor's Office set the monument directly over the stone. Hence, as monumented, corner 2 falls approximately 1.0 foot east of the range line.

Corner 1 was originally established as a wood post in 1819. Corner 2 was originally established as a wood post in 1822.

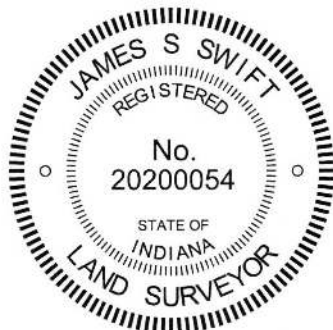


① S.E. Corner, Section 24  
N.E. Corner, Section 25  
T 19 N, R 2 E

② S.W. Corner, Section 19  
N.W. Corner, Section 30  
T 19 N, R 3 E

Distance between monuments = 45.2'

Note: The Harrison monument at corner 2 is 1.03' east of the Range line defined by the standard corners to the north and south.



*Kenneth E. Hedge*  
Kenneth E. Hedge, County Surveyor

*James S. Swift*  
James S. Swift, IN LS 20200054  
March 24, 2016

Marion  
Township  
(Boone)

Union  
Township  
(Boone)

Section 24 T19N, R2E	Section 19 T19N, R3E
Section 25 T19N, R2E	Section 30 T19N, R3E

Boone County

Washington Twp.  
Hamilton County

PHOTOGRAPHIC DOCUMENTATION

Date of photography: July 12, 2012

The stone at Corner 1 (Boone County corner) as it was originally exposed.



The stone at Corner 1 more fully exposed.



Close-up of the stone at Corner 1 washed, accentuating the etched + mark.



View from the west, looking across the stone at Corner 1 and east along County Road 200 North.



The stone at Corner 2 (Hamilton County corner) fully exposed.



For details and documentation, refer to related sheet "Section Corner Record."