

SECTION CORNER RECORD

BOONE COUNTY SURVEYOR'S OFFICE

NE 100-500

State Plane grid coordinates NAD83 (NSRS 2007):

North: 1751187.06 East: 3151049.35 (U.S. survey feet)

Type of monument: Harrison, 4" disk 'Section Corner'

Depth: One inch below adjacent road surface

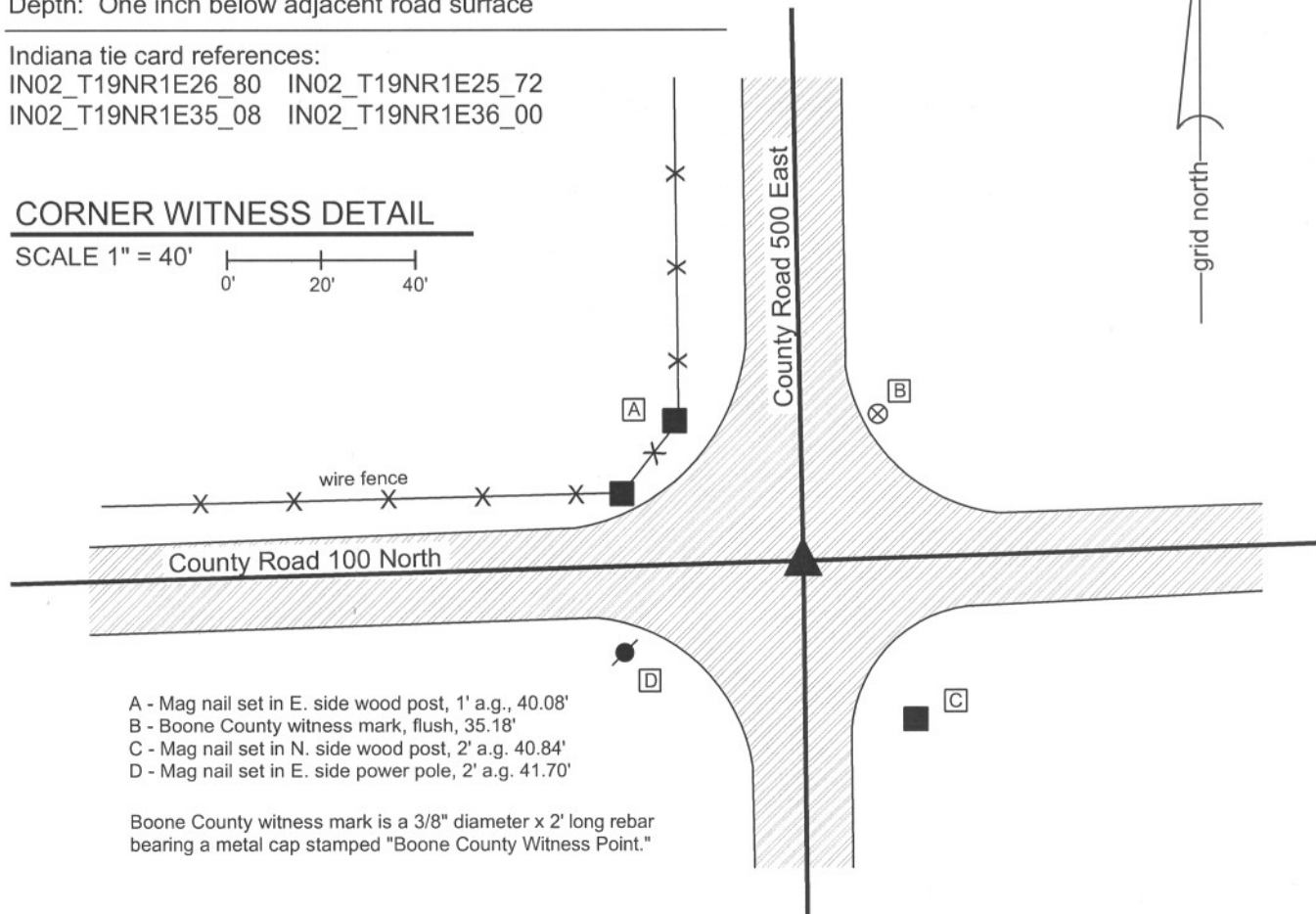
Indiana tie card references:

IN02_T19NR1E26_80 IN02_T19NR1E25_72

IN02_T19NR1E35_08 IN02_T19NR1E36_00

CORNER WITNESS DETAIL

SCALE 1" = 40'



- A - Mag nail set in E. side wood post, 1' a.g., 40.08'
- B - Boone County witness mark, flush, 35.18'
- C - Mag nail set in N. side wood post, 2' a.g. 40.84'
- D - Mag nail set in E. side power pole, 2' a.g. 41.70'

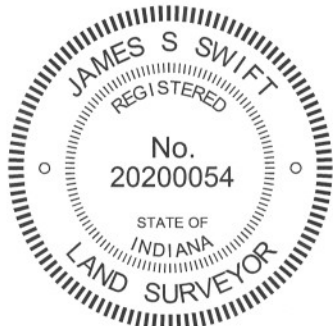
Boone County witness mark is a 3/8" diameter x 2' long rebar bearing a metal cap stamped "Boone County Witness Point."

The harrison monument was set in place of a vertical section of railroad rail found.

A BCS record of September 17, 1867 states "Reestablished drove a stake." A BCS record of August 4-5, 1868 shows the corner as the terminal point for measurements with no description of monumentation. A BCS tie card dated July, 1968 shows the corner but does not mention a monument. The field notes associated with this document state "no stone." A BCS tie card dated May 29, 1991 shows the corner as "angle iron fd. (rail)." A BCS tie card dated August 4, 2005 shows the corner as a harrison monument.

This corner was excavated on July 12, 2011. Prior to excavation a harrison monument was found at the surface. Excavation revealed a section of railroad rail on end found at 6 inches deep. The center of the rail was 0.3' south and 0.1' west of the harrison. No evidence was found directly below the harrison. Further excavation revealed a wood stake found at 10 inches deep, 2.1' west and 0.5' south of the rail. The stake was entirely in the fill material of the road and appears to be much newer than a wood stake from 1867. No other evidence was found in an area of excavation extending 2.5' East, 2.5' West, 4' South and 2' North of the original found harrison monument. Excavation was extended to the clay layer below the road, at 3 feet deep. The found railroad rail was held as the corner. It is most likely that the rail was established in association with the 1968 tie card. It is noted the lay of the surrounding ground indicates that this corner was likely low and occasionally wet during the wagon road era.

This corner was originally established as a wood stake in June, 1822.



Kenneth E. Hedge
 Kenneth E. Hedge, County Surveyor

James S. Swift
 James S. Swift, IN LS 20200054

March 1, 2012

Center Township

Section 26 T19N, R1E	Section 25 T19N, R1E
Section 35 T19N, R1E	Section 36 T19N, R1E

SECTION CORNER RECORD

NE 100-600

BOONE COUNTY SURVEYOR'S OFFICE

State Plane grid coordinates NAD83 (2011):

Corner 1: North: 1751369.50 East: 3156369.35 (U.S. survey feet)

Corner 2: North: 1751341.82 East: 3156369.75 (U.S. survey feet)

Type of monument: Harrison, 4" disk 'Section Corner'

Depth: Flush with adjacent road surface

Indiana tie card references:

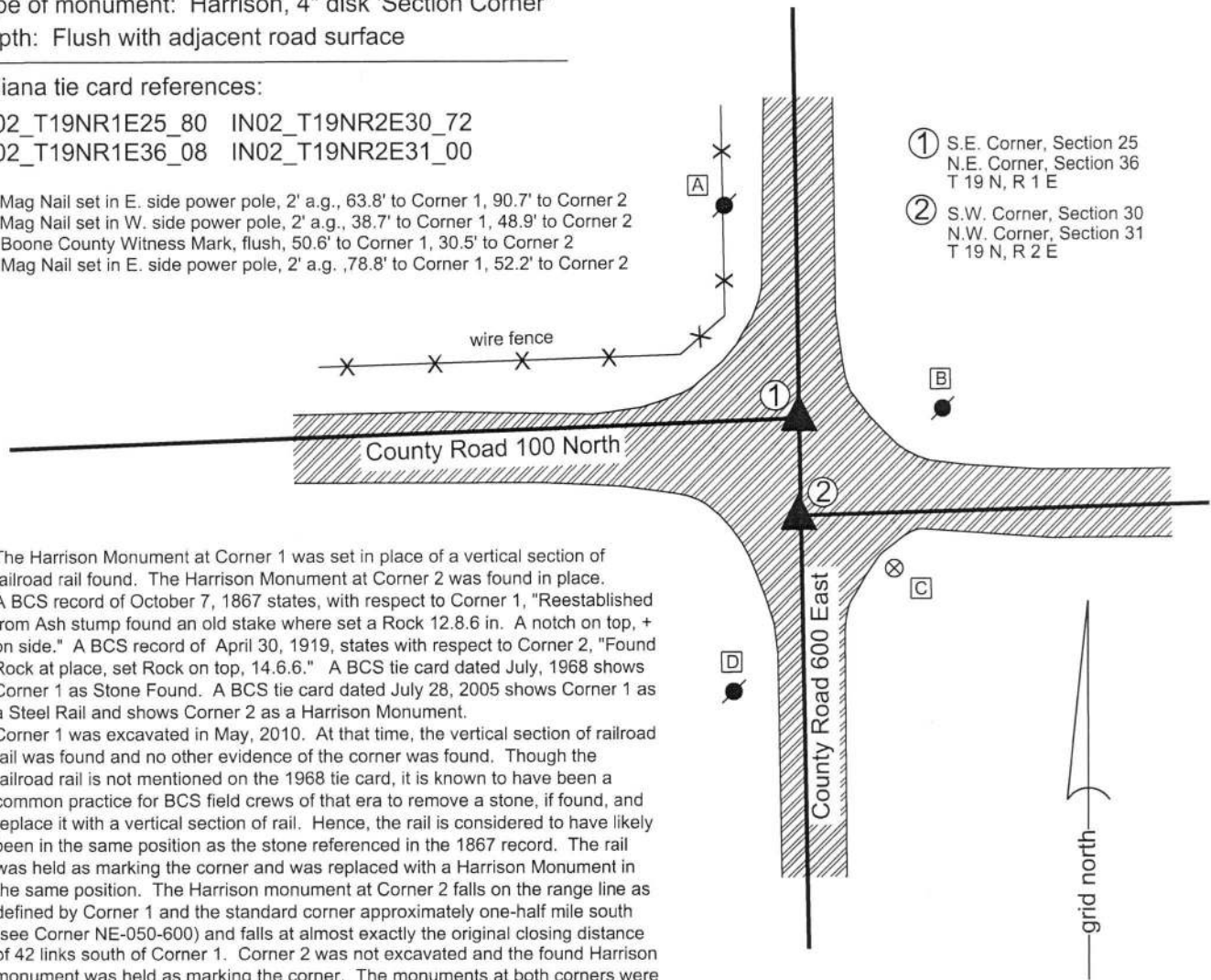
IN02_T19NR1E25_80 IN02_T19NR2E30_72

IN02_T19NR1E36_08 IN02_T19NR2E31_00

- A - Mag Nail set in E. side power pole, 2' a.g., 63.8' to Corner 1, 90.7' to Corner 2
- B - Mag Nail set in W. side power pole, 2' a.g., 38.7' to Corner 1, 48.9' to Corner 2
- C - Boone County Witness Mark, flush, 50.6' to Corner 1, 30.5' to Corner 2
- D - Mag Nail set in E. side power pole, 2' a.g., 78.8' to Corner 1, 52.2' to Corner 2

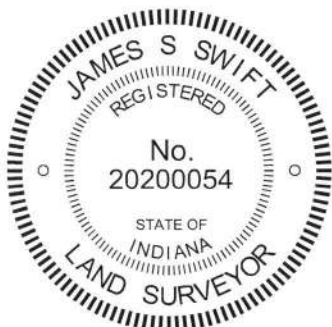
CORNER WITNESS DETAIL

SCALE 1" = 50'



- ① S.E. Corner, Section 25
N.E. Corner, Section 36
T 19 N, R 1 E
- ② S.W. Corner, Section 30
N.W. Corner, Section 31
T 19 N, R 2 E

The Harrison Monument at Corner 1 was set in place of a vertical section of railroad rail found. The Harrison Monument at Corner 2 was found in place. A BCS record of October 7, 1867 states, with respect to Corner 1, "Reestablished from Ash stump found an old stake where set a Rock 12.8.6 in. A notch on top, + on side." A BCS record of April 30, 1919, states with respect to Corner 2, "Found Rock at place, set Rock on top, 14.6.6." A BCS tie card dated July, 1968 shows Corner 1 as Stone Found. A BCS tie card dated July 28, 2005 shows Corner 1 as a Steel Rail and shows Corner 2 as a Harrison Monument. Corner 1 was excavated in May, 2010. At that time, the vertical section of railroad rail was found and no other evidence of the corner was found. Though the railroad rail is not mentioned on the 1968 tie card, it is known to have been a common practice for BCS field crews of that era to remove a stone, if found, and replace it with a vertical section of rail. Hence, the rail is considered to have likely been in the same position as the stone referenced in the 1867 record. The rail was held as marking the corner and was replaced with a Harrison Monument in the same position. The Harrison monument at Corner 2 falls on the range line as defined by Corner 1 and the standard corner approximately one-half mile south (see Corner NE-050-600) and falls at almost exactly the original closing distance of 42 links south of Corner 1. Corner 2 was not excavated and the found Harrison monument was held as marking the corner. The monuments at both corners were raised to the level of the surface of the newly paved roadways in May, 2018. Corner 1 was originally established as a wood post in 1819 and Corner 2 was originally established as a wood post in 1821.



Kenneth E. Hedge
Kenneth E. Hedge, County Surveyor

James S. Swift
James S. Swift, IN LS 20200054
August 1, 2018

Center Township Union Township

Section 25 T19N, R1E	Section 30 T19N, R2E
Section 36 T19N, R1E	Section 31 T19N, R2E

SECTION CORNER RECORD

NE 100-550

BOONE COUNTY SURVEYOR'S OFFICE

State Plane grid coordinates NAD83 (NSRS 2007):

North: 1751272.40 East: 3153707.72 (U.S. survey feet)

Type of monument: Harrison, 4" disk 'Section Corner'

Depth: One inch below adjacent road surface

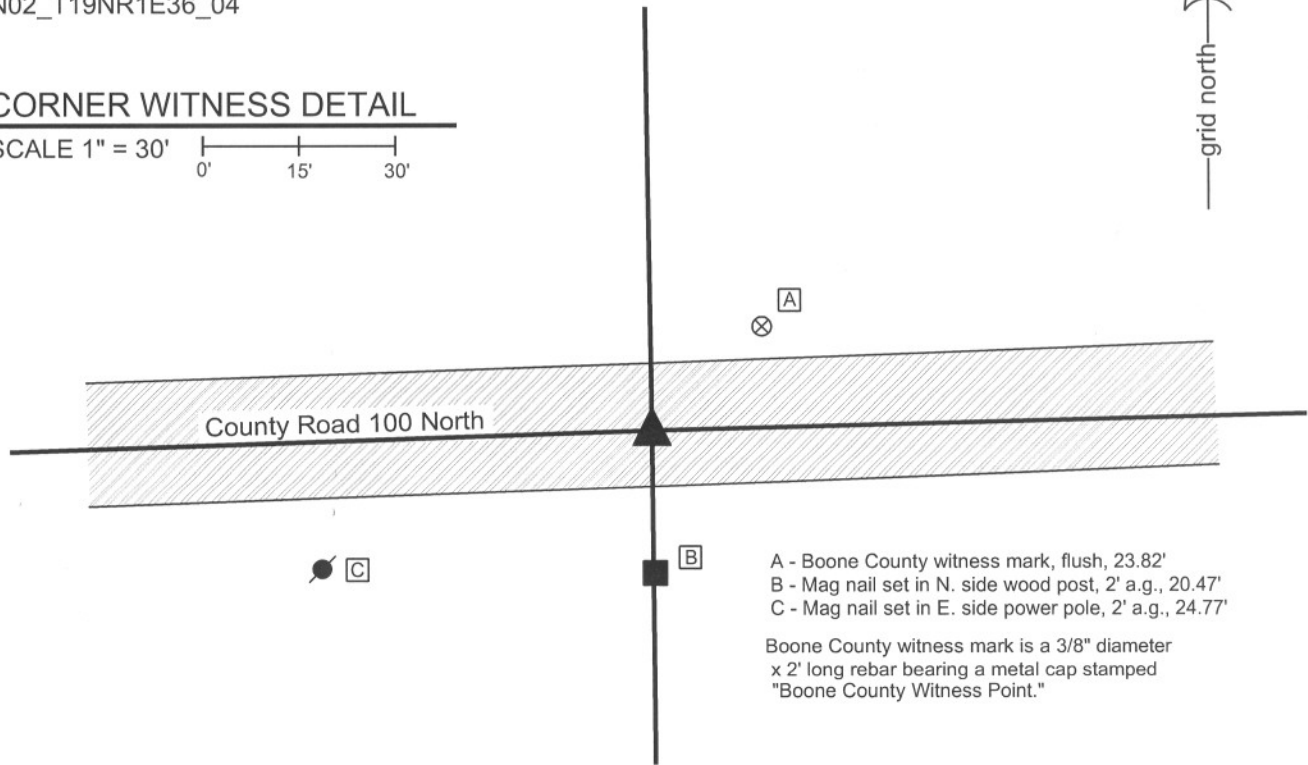
Indiana tie card references:

IN02_T19NR1E25_76

IN02_T19NR1E36_04

CORNER WITNESS DETAIL

SCALE 1" = 30'



- A - Boone County witness mark, flush, 23.82'
- B - Mag nail set in N. side wood post, 2' a.g., 20.47'
- C - Mag nail set in E. side power pole, 2' a.g., 24.77'

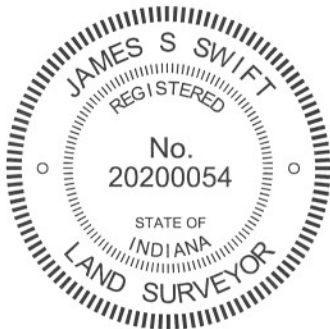
Boone County witness mark is a 3/8" diameter x 2' long rebar bearing a metal cap stamped "Boone County Witness Point."

The harrison monument was set over a stone found.

A BCS record of September, 1867 states "Reestablished. Set Rock 18.14.9 in + on top from which...." A BCS tie card dated July 1968 states "no stone." A BCS tie card dated June 3, 1974 states "no stone." A BCS tie card dated July 22, 2005 shows the corner as a steel rail with no documentation of source.

This corner was excavated on September 29, 2011. Prior to excavation the top of a vertical section of railroad rail was visible at 1 inch deep in a hole in the asphalt. It is likely that this section of rail was established in association with either the 1968 or 1974 tie cards. Excavation revealed a small stone found at 12 inches deep, in the fill material near the bottom of the road bed. Another, larger stone was found at 17 inches deep, directly below the small stone. With the top 11 inches of the larger stone exposed, it measures 14 inches E-W by 7 inches north south. An etched + is clearly visible on top at the center of the top of the stone. The stone is situated vertically and the south side is flat and vertical. With 11 inches exposed, the stone remained entirely stable in the clay. The top of the stone was found to protrude approximately 2 inches out of the clay layer below the road into the bottom of the road bed. The stone was accepted as being the stone described in the 1867 record. The stone was left in place and a harrison monument was set directly above the etched "+" on the top of the stone. The section of railroad rail, removed during excavation, had been 1.5 feet north and 0.2 foot west of the stone.

This corner was originally established as a wood post in June, 1822.



Kenneth E. Hedge
Kenneth E. Hedge, County Surveyor

James S. Swift
James S. Swift, IN LS 20200054
March 1, 2012

Center Twp

Section 25
T19N, R1E

Section 36
T19N, R1E

PHOTOGRAPHIC DOCUMENTATION

Date of photography: September 29, 2011

View of the stone as first exposed.



View of the stone more fully exposed.



View of the stone exposed, from a different perspective showing the flat south side of the stone.



The stone and the post on the south side of road.



View of the stone washed, showing etched "+".



For details and documentation, refer to related sheet "Section Corner Record."

SECTION CORNER RECORD

NE 150-500

BOONE COUNTY SURVEYOR'S OFFICE

State Plane grid coordinates NAD83 (CORS96):

North: 1753835.39 East: 3151002.21 (U.S. survey feet)

Type of monument: Harrison, 4" disk 'Section Corner'

Depth: One inch below adjacent road surface

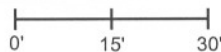
Indiana tie card references:

IN02_T19NR1E25_36

IN02_T19NR1E26_44

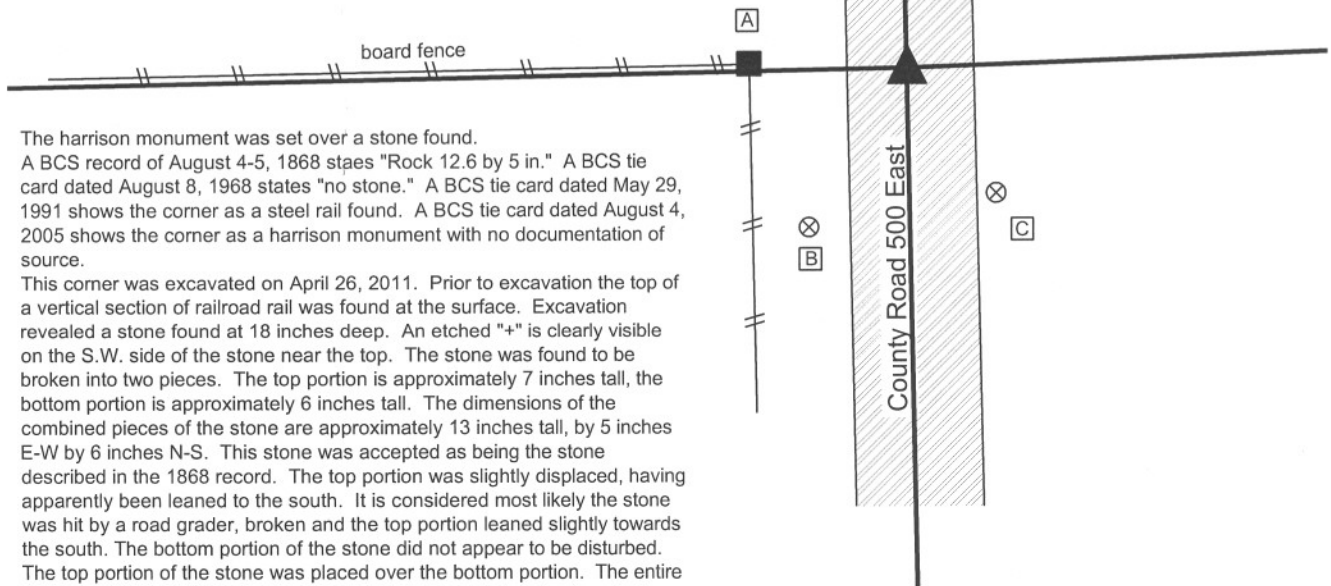
CORNER WITNESS DETAIL

SCALE 1" = 30'



- A - Mag nail set in E. side wood post, 6 in. a.g., 24.57'
- B - Boone County witness mark, flush, 29.20'
- C - Boone County witness mark, flush, 24.01'

Boone County witness mark is a 3/8" diameter x 2' long rebar bearing a metal cap stamped "Boone County Witness Point."



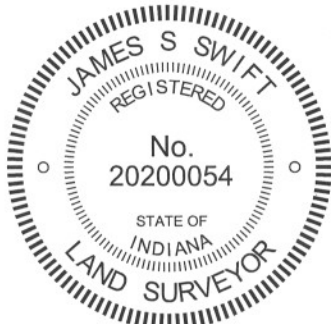
The harrison monument was set over a stone found.
 A BCS record of August 4-5, 1868 states "Rock 12.6 by 5 in." A BCS tie card dated August 8, 1968 states "no stone." A BCS tie card dated May 29, 1991 shows the corner as a steel rail found. A BCS tie card dated August 4, 2005 shows the corner as a harrison monument with no documentation of source.

This corner was excavated on April 26, 2011. Prior to excavation the top of a vertical section of railroad rail was found at the surface. Excavation revealed a stone found at 18 inches deep. An etched "+" is clearly visible on the S.W. side of the stone near the top. The stone was found to be broken into two pieces. The top portion is approximately 7 inches tall, the bottom portion is approximately 6 inches tall. The dimensions of the combined pieces of the stone are approximately 13 inches tall, by 5 inches E-W by 6 inches N-S. This stone was accepted as being the stone described in the 1868 record. The top portion was slightly displaced, having apparently been leaned to the south. It is considered most likely the stone was hit by a road grader, broken and the top portion leaned slightly towards the south. The bottom portion of the stone did not appear to be disturbed. The top portion of the stone was placed over the bottom portion. The entire bottom and most of the top portion were embedded in the clay layer below the road bed.

A harrison monument was set in a position directly over the center of the bottom portion of the stone. Both parts of the stone were left in place. The top portion was encased in concrete.

The railroad rail, removed during excavation, had been 1.7 feet north and 1.7' east of the stone. No harrison monument, as mentioned in the 2005 tie card, was found prior to or during excavation.

This corner was originally established as a wood post in June, 1822.



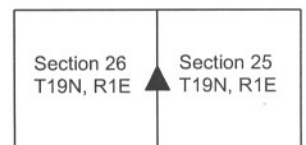
Kenneth E. Hedge

 Kenneth E. Hedge, County Surveyor

James S. Swift

 James S. Swift, IN LS 20200054
 March 1, 2012

Center Township



PHOTOGRAPHIC DOCUMENTATION

Date of photography: April 26, 2011

The top of the rail prior to excavation.



The stone as first exposed.



View of the top part of the stone, from the south, looking north along County Road 500 East.



Both parts of the stone, embedded.



Both parts of the stone. The top part has been placed directly on the still embedded bottom part.



For details and documentation, refer to related sheet "Section Corner Record."

SECTION CORNER RECORD

NE 150-600

BOONE COUNTY SURVEYOR'S OFFICE

State Plane grid coordinates NAD83 (2011):

Corner 1: North: 1754031.40 East: 3156340.36 (U.S. survey feet)

Corner 2: North: 1753999.07 East: 3156340.67 (U.S. survey feet)

Type of monument: Harrison, 4" disk 'Section Corner'

Depth: One inch below adjacent road surface

Indiana tie card references:

IN02_T19NR1E25_44 IN02_T19NR2E30_36

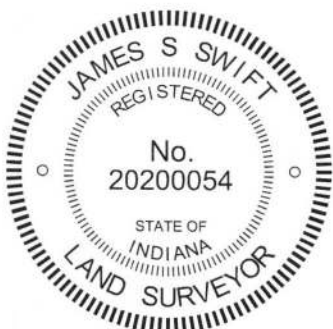
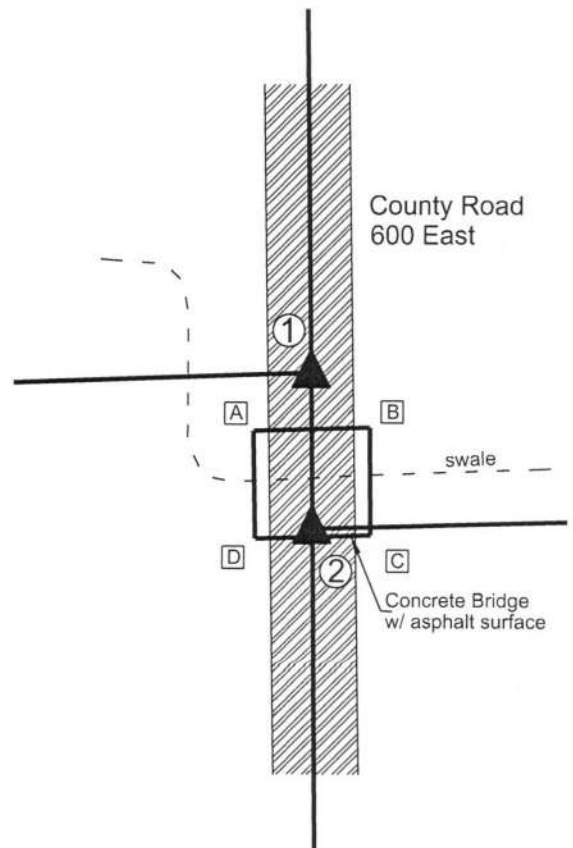
CORNER WITNESS DETAIL

SCALE 1" = 40'

- A - N.W. corner, concrete bridge wall
17.1' to Corner 1, 23.7' to Corner 2
- B - N.E. corner, concrete bridge wall,
16.7' to Corner 1, 24.1' to Corner 2
- C - S.E. corner, concrete bridge wall
35.8' to Corner 1, 12.2' to Corner 2
- C - S.W. corner, concrete bridge wall
36.3' to Corner 1, 12.1' to Corner 2

The Harrison monuments were set in place of found Harrison monuments. A BCS Record of March 23, 1855, attributed to H. Taylor, states, with respect to Corner 2, "A Sassafras post in Prairie. No Tree." A BCS record of March 2, 1871 states, with respect to Corner 1, "Reestablished. Drove stake 49 links north Sasafras stake set by Taylor." A BCS record referenced to 1909 states, with respect to Corner 2, "Set a Rock 20x10x6 20 feet east of corner, which is in ditch." It is noted that the distance of 49 links referenced in the 1871 record represents the average of the original federal closing distances for the sets of corners 1/2 mile north and south. BCS tie cards dated July 28, 2005 show both corners as Harrison monuments with no documentation of source. Significant excavation was not performed at these corners as they fall in an area of substantial fill associated with the road crossing a swale. The positions of the found Harrison monuments fit reasonably well with surrounding corners and are separated by 49 links, as called in the 1871 record. The location of the Corner 2 above the swale correlates well with the 1871 reference to the corner being in the ditch. No contrary evidence was found to call into question the positions of the found Harrisons nor is any local, physical evidence likely to be found, given the situation at the corner with the swale and small bridge. The found monuments were accepted as marking the corners. Both monuments were removed and replaced with identical monuments set in a more stable condition. Corner 1 was originally established in 1819. Corner 2 is not an original federal corner.

- ① East Quarter Corner
Section 25
T 19 N, R 1 E
- ② West Quarter Corner
Section 30
T 19 N, R 2 E



Kenneth E. Hedge
Kenneth E. Hedge, County Surveyor

James S. Swift
James S. Swift, IN LS 20200054
June 12, 2018

Center Township	Union Township
Section 25 T19N, R1E	Section 30 T19N, R2E

SECTION CORNER RECORD

BOONE COUNTY SURVEYOR'S OFFICE


NE 200-500

State Plane grid coordinates NAD83 (CORS96):
 North: 1756487.56 East: 3150955.66 (U.S. survey feet)

Type of monument: Harrison, 4" disk 'Section Corner'
 Depth: One inch below adjacent road surface

Indiana tie card references:
 IN02_T19NR1E23_80 IN02_T19NR1E24_72
 IN02_T19NR1E26_08 IN02_T19NR1E25_00

CORNER WITNESS DETAIL

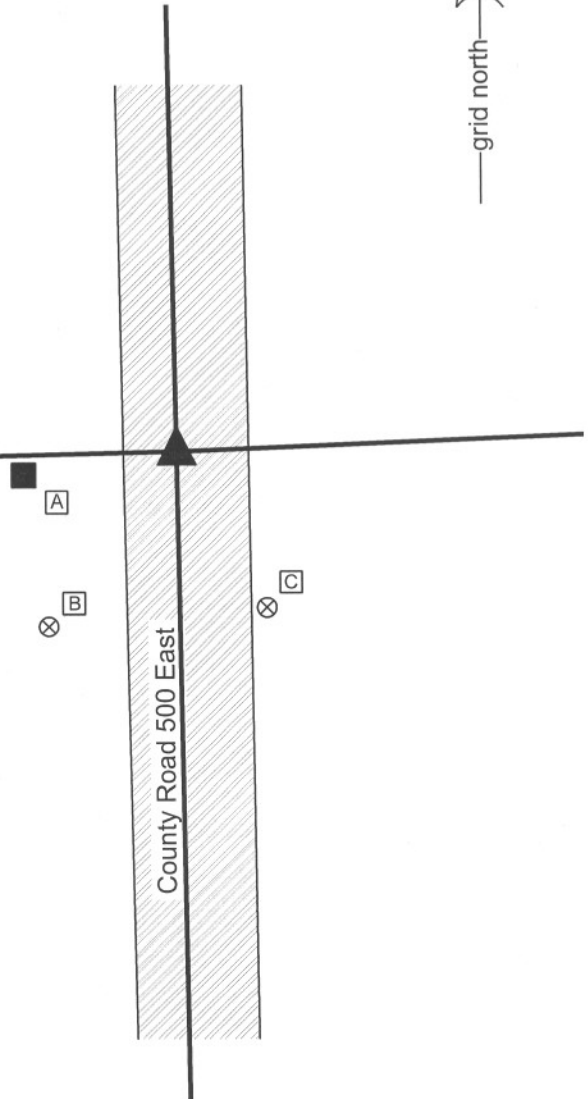
SCALE 1" = 30' 

- A - Mag nail set in E. side wood post, 1' a.g., 23.47'
- B - Boone County witness mark, flush, 28.21'
- C - Boone County witness mark, flush, 33.91'

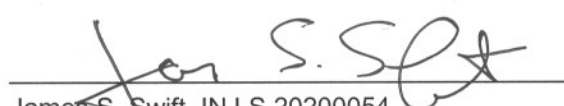
Boone County witness mark is a 3/8" diameter x 2' long rebar bearing a metal cap stamped "Boone County Witness Point."



The harrison monument was set over a stone found.
 A BCS record of March 25, 1903 calls for a rock set 5,8,17 + on top. This record also calls for intermediate corners which are not shown on the diagram for the section and may be describing another section. The corner is shown as a terminal point for measurements in 1860. A BCS tie card dated 1991 show the corner as a steel rail found. A BCS tie card dated August 3, 2005 show the corner as a harrison monument with no documentation of source.
 This corner was excavated on March 30, 2011. Prior to excavation a harrison monument was found at the surface. Excavation revealed a railroad rail found at 6 inches deep, below the harrison. Further excavation revealed two stones. The upper stone was a small stone found the in the fill material. The lower stone, found directly below the upper stone, was fully embedded in the clay layer below the road, protruding approximately 1 inch into the bottom of the road bed. With the top 8 inches of the stone exposed, it measures 12 inches N-S by 6 inches E-W, oriented N-S with a distinct N-S ridge and a clear high point on the top, center of the ridge. The east side of the stone is vertical and the west side slopes. The full height of the stone was not measured. The dimensions of the stone do not match the aforementioned 1903 record, but some question exists with respect to this record. The stone does match the characteristics of stones found marking other corners, being vertical, oriented in cardinal directions and embedded in the clay layer below the road. The stone was accepted as the best evidence of the corner and the distinct high point on the N-S ridge was held as marking the corner. The stone was left in place and the harrison monument set above it. The railroad rail and harrison monument, both removed during excavation, had been 2.4' feet south and 0.4 foot east of the stone.
 This corner was originally established as a wood post in June, 1822.




 Kenneth E. Hedge, County Surveyor


 James S. Swift, IN LS 20200054
 March 1, 2012

Center Township

Section 23 T19N, R1E	Section 24 T19N, R1E
Section 26 T19N, R1E	Section 25 T19N, R1E

PHOTOGRAPHIC DOCUMENTATION

Date of photography: March 30, 2011

View of the stone as first exposed. The small rock found in the fill is on the asphalt to the right.



View of the stone from above and west.



View from above the stone looking south along County Road 500 East.



View of the stone from above and south.



For details and documentation, refer to related sheet "Section Corner Record."

SECTION CORNER RECORD

BOONE COUNTY SURVEYOR'S OFFICE

NE 200-600

State Plane grid coordinates NAD83 (2011):

Corner 1: North: 1756692.87 East: 3156302.52 (U.S. survey feet)

Corner 2: North: 1756656.10 East: 3156305.08 (U.S. survey feet)

Type of monument: Harrison, 4" disk 'Section Corner'

Depth: Flush with adjacent road surface

Indiana tie card references: IN02_T19NR1E24_80 IN02_T19NR2E19_72
IN02_T19NR1E25_08 IN02_T19NR2E30_00

CORNER WITNESS DETAIL

SCALE 1" = 30'

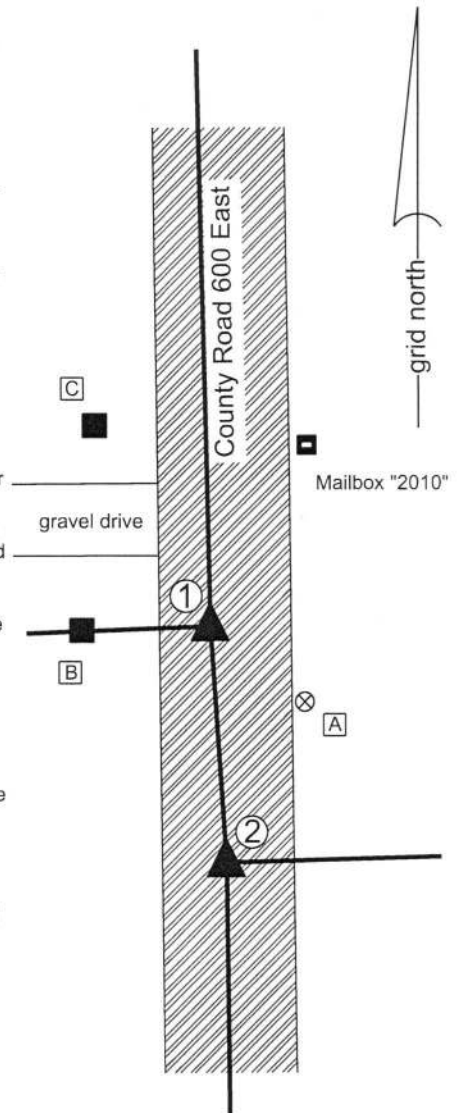
The Harrison Monument at Corner 1 was set over a stone found and the Harrison Monument at Corner 2 was set in place of a stone found and a Harrison Monument found.

A BCS record of November 8, 1871 states, with respect to Corner 2, "Reestab from stump of one tree. Set a Rock 8.5.4 +." A BCS record of March 20, 1873 states, with respect to Corner 1, "Reestablished from Oak tree, set a Rock 18.12.7 +." BCS tie cards of July 28, 2005 show both corners as Harrison monuments with no documentation of source.

Corner 1 was excavated on May 24, 2010. Prior to excavation, a Harrison monument was found at the surface of the road per the 2005 tie card. Excavation revealed the stone described in the 1873 record at 8 inches deep. The stone was found to be vertical, embedded in the clay layer below the road bed and protruding approximately 6 inches into the bottom of the road bed. With the top 12 inches of the stone exposed, it measured 12 inches E-W by 7 inches N-S with a protrusion on the south side which extended the N-S dimension to 8 inches at the protrusion. The north side of the stone was flat and vertical. No specific marks were found. The stone was in line with the fence to the west. The stone was accepted as being the same monument described in the 1873 record and was held as marking the corner. The stone was left in place, the top of the stone was encased in concrete and a Harrison monument was set over the top, center of the stone. The Harrison monument, removed during excavation, had been 0.2 foot north and 2.1 feet east of the top, center of the stone.

Corner 2 was excavated on May 18, 2018. Prior to excavation, the Harrison monument shown on the 2005 tie card as marking the corner was found flush with the surface of the road. Excavation revealed the stone described in the 1871 record found at 18 inches deep, directly below the found Harrison monument. The stone was of a rectangular shape with evidently cut sides. The stone measured 8 inches tall by 6 inches N-S by 3 inches E-W. The stone was fully embedded in the clay layer below the road bed, situated vertically with a distinct high point. An etched "+" mark was found on the sloping top, south side of the stone. The stone was accepted as being the same monument as described in the 1871 record.

It is noted that the stone at Corner 2 falls 2.1 feet east of a straight line connecting the stone found at Corner 1 and the standard corner one-half mile south (see Corner NE 150-600). The standard procedure adhered to by this office is to endeavor to establish closing corners on the range line as defined by the relevant standard corners, if sufficient evidence is available to firmly establish the range line as connecting the standard corners. However, at this set of corners it is clearly evident that the two adjacent corners were monumented in 1871 and 1873 in positions which are not in harmony in the east-west dimension. It is further noted that both corners were perpetuated from older evidence in the form of an original bearing tree and roots of an original bearing tree. It is also noted that the stones found at the respective corners are separated by almost exactly the original closing distance of 56 links. It is observed that any error in the establishment of the corners by radial tie distances from the bearing trees in 1871 and 1873 would likely result in a variation in the distance separation between the corners. Given that the distance between the two corners is close to the original closing distance of 56 links, it appears that perhaps the closing corner was originally established east of the longer range line. If this is the case, it would follow that a jog may have been established in the range line as early as 1821 when the closing corner was originally set. The stones found marking the two corners were both held and Harrison monuments were set above (Corner 1) or in place of (Corner 2) and it is accepted that the line between Ranges 1 East and 2 East jogs between Corner 1 and Corner 2.



- ① S.E. Corner, Section 24
N.E. Corner, Section 25
T 19 N, R 1 E
- ② S.W. Corner, Section 19
N.W. Corner, Section 30
T 19 N, R 2 E

Distance between monuments: 36.86'
Original closing distance: 56 links (37')

- A - Boone County witness mark, flush, 19.0' to Corner 1, 27.9' to Corner 2
- B - Mag Nail set in E. side wood post, 2' a.g. 19.0' to Corner 1, 41.9' to Corner 2
- C - Mag nail set in E. side wood post, 1' a.g. 35.5' to Corner 1, 70.8' to Corner 2



Kenneth E. Hedge
Kenneth E. Hedge, County Surveyor

James S. Swift
James S. Swift, IN LS 20200054
August 1, 2018

