

SECTION CORNER RECORD

SW 400-600

BOONE COUNTY SURVEYOR'S OFFICE

State Plane grid coordinates NAD83 (2011):

Corner 1: North: 1724240.58 East: 3093292.35 (U.S. survey feet)

Corner 2: North: 1724220.90 East: 3093292.52 (U.S. survey feet)

Type of monument: Harrison, 4" disk 'Section Corner'

Depth: Six inches below adjacent gravel road surface.

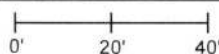
Indiana tie card references:

IN02_T18NR2W24_80 IN02_T18NR1W19_72

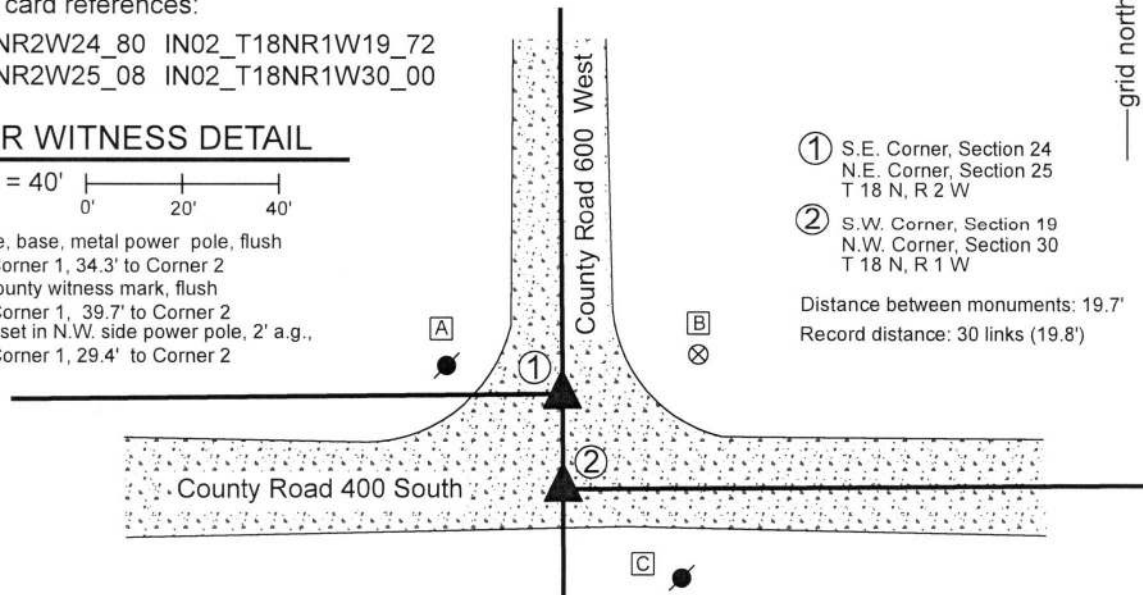
IN02_T18NR2W25_08 IN02_T18NR1W30_00

CORNER WITNESS DETAIL

SCALE 1" = 40'



- A - East edge, base, metal power pole, flush
23.4' to Corner 1, 34.3' to Corner 2
- B - Boone County witness mark, flush
29.6' to Corner 1, 39.7' to Corner 2
- C - Mag nail set in N.W. side power pole, 2' a.g.,
44.0' to Corner 1, 29.4' to Corner 2



① S.E. Corner, Section 24
N.E. Corner, Section 25
T 18 N, R 2 W

② S.W. Corner, Section 19
N.W. Corner, Section 30
T 18 N, R 1 W

Distance between monuments: 19.7'
Record distance: 30 links (19.8')

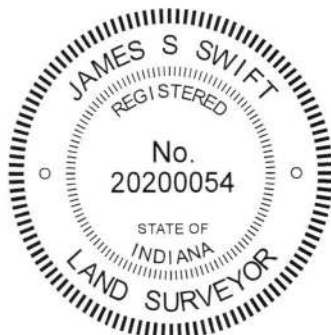
The Harrison monument at Corner 1 was set over a stone found. The Harrison monument at Corner 2 was set in place of a vertical section of railroad rail found.

A BCS record of June 3-4, 1872 describes both corners. In an entry for corner "E" of section 24 (Corner 1 herein) the record states, "Reest. from Oak. Set a rock marked +. 30 links south of this set a rock 21.13.3 +. Cor. sections 19&30." A corresponding record for corner "A" of section 30 (Corner 2 herein), dated June 4, 1872, states "Reestablished 30 links south of corner secs. 24&25 where an oak is green. Set a rock 21.13.3. Also set a rock + at corner 24 & 25."

A BCS tie card with no date but believed to be from the late 1960s or early 1970s shows the intersection and shows a corner with ties and the notation "STONE LOCATED." The tie card indicates that this is for the corner of section 24 & 25, though the graphical representation of the intersection indicates that the corner established on that date is actually the corner of sections 19&30.

These corners were excavated on August 16, 2018. Prior to excavation, a vertical section of railroad rail was known to mark the corner of sections 19&30. The position of a stone marking the corner of sections 24&25 was determined from information shown on a survey by Frank T. Luse, LS20000223 recorded as Instrument 201300014151 in the Office of the Boone County Recorder. Excavation at Corner 1 revealed the vertical section of railroad rail at 3 inches deep. No stone or other evidence was found around the rail. It is believed that the stone which was set in 1872 was removed and replaced with the railroad rail at the time of the creation of the undated tie card, as it is known that this was a common practice of BCS field crews in that era. Excavation at Corner 1 revealed a stone found at 16 inches deep. The stone was of a rough surface and no specific markings were detected on it. The highest point is at the north edge of the stone. This point was at 19.7 feet (0.1 foot less than 30 links) north of the center point of the top of the rail. The top of the rail was held as marking Corner 2. The rail was removed and a Harrison monument was set in the same position. The specific position of Corner 1 was established on a prolongation of the line from the corner 1/2 mile south (see Corner SW 450-600) through the rail at the distance between the top of the rail and the north edge / high point of the stone found at Corner 1. A Harrison monument was set at this position, which fell approximately 0.1 foot west of the high point of the found stone. Hence the monument is situated directly over the stone but 0.1 foot west of the high point on the north edge and the two corners are at 19.7 feet apart, rather than 19.8 feet. It is noted that if the full 30 link separation were held, Corner 1 would fall slightly north of the north edge of the found stone. It is noted that the east-west roadway of County Road 400 South does not jog at this corner and that the roadway between Corner 1 and the corner 1/2 mile west (see Corner SW 400-650) is south of the section line.

Corner 1 was originally established in 1819. Corner 2 was established in 1820, 30 links south of Corner 1.



Kenneth E. Hedge
 Kenneth E. Hedge, County Surveyor

James S. Swift
 James S. Swift, IN LS 20200054
 August 29, 2018

Jackson Township

Section 24 T18N, R2W	Section 19 T18N, R1W
Section 25 T18N, R2W	Section 30 T18N, R1W

SECTION CORNER RECORD

SW 400-650

BOONE COUNTY SURVEYOR'S OFFICE

State Plane grid coordinates NAD83 (2011):

North: 1724218.05 East: 3090617.48 (U.S. survey feet)

Type of monument: Harrison, 4" disk 'Section Corner'

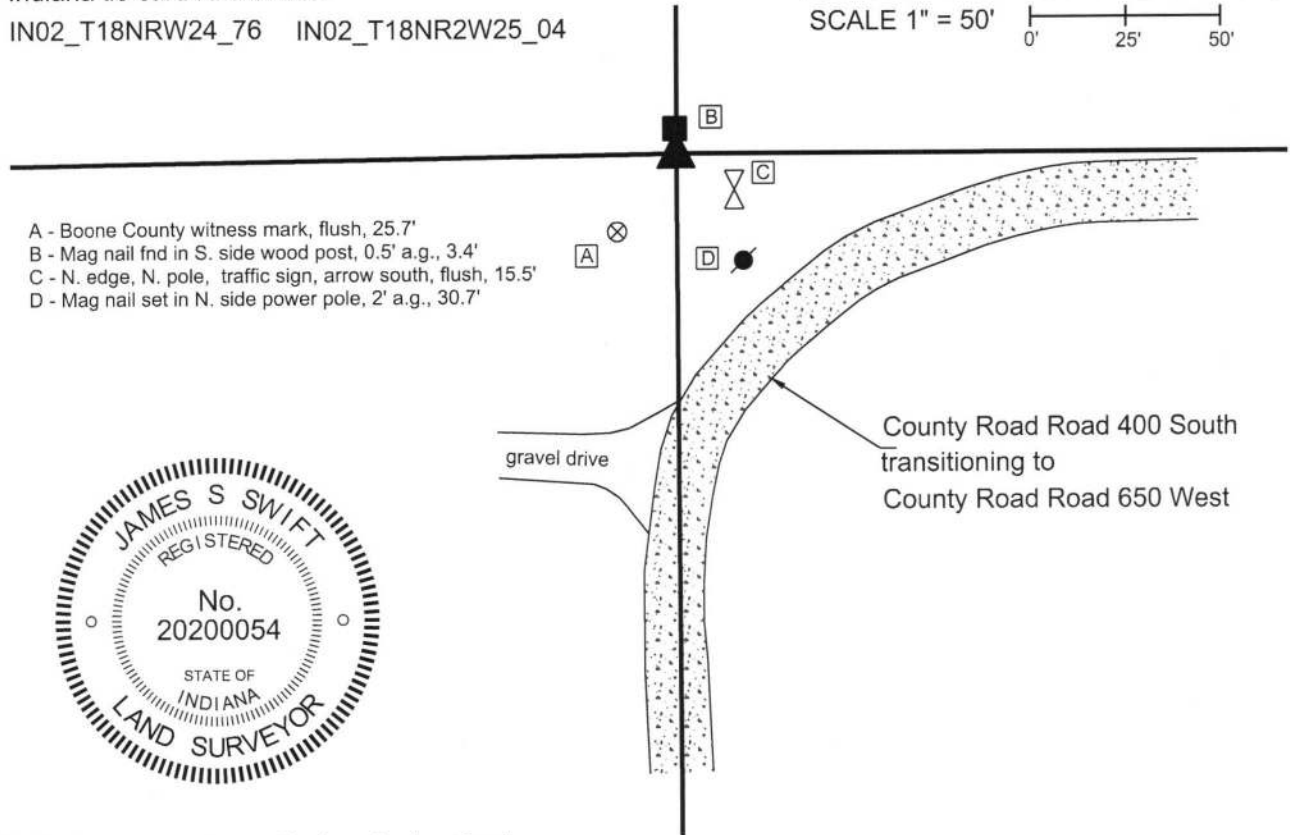
Depth: Flush with adjacent ground

Indiana tie card references:

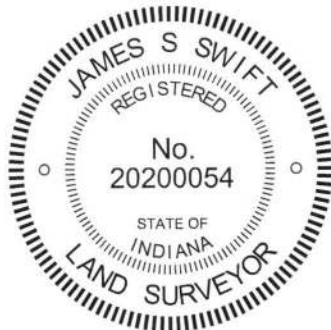
IN02_T18NRW24_76 IN02_T18NR2W25_04

CORNER WITNESS DETAIL

SCALE 1" = 50' 0' 25' 50'



- A - Boone County witness mark, flush, 25.7'
- B - Mag nail fnd in S. side wood post, 0.5' a.g., 3.4'
- C - N. edge, N. pole, traffic sign, arrow south, flush, 15.5'
- D - Mag nail set in N. side power pole, 2' a.g., 30.7'



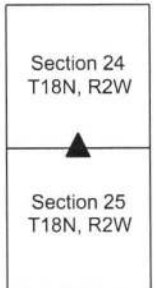
The Harrison monument was set in place of a stone found.

A BCS record dated September 20, 1877 states, with respect to this corner, "Reest at intersection of section line and center line. Set Rock 12.21.17+ marked + on top side." A subsequent record of November 8, 1893 calls the corner, along with a nearby corner, "Rocks placed." No recent BCS tie cards were found referencing this corner. However, it is known that recent surveys in the area have held a stone found at the corner. One of these surveys is recorded in Survey Book 14, page 62 in the Office of the Boone County Surveyor, certified by Frank T. Luse, LS 20000223, on December 7, 2013. The stone shown as marking the corner of the Luse survey was found in good condition. The stone was found 3 inches below grade, standing upright, oriented north-south. The stone measured 11 inches N-S by 4 inches E-W by 8 inches tall. No specific marks were found. The approximate top, center of the stone was held, which is believed to fit with the position held for the Luse survey. The stone was accepted as marking the corner as was replaced with a Harrison monument in the same position.

It is noted that the stone does not match the dimensions in the 1877 record. It is also noted that the 1893 record indicates that a new stone was placed at the corner, which is interpreted to indicate that the rock from the 1877 record was either not found, not held, or known to have been displaced by 1893. It is further noted that the quarter section line which bears east from this point falls north of and generally parallel with the roadway of County Road 400 South. This is believed to be due to the fact that the roadway does not follow the 30 link jog at the range line approximately one-half mile east. A stone known to exist at the east quarter corner of section 24 also falls north of the east-west roadway. The wording in the 1877 record may indicate that, at that time, the corner was established in line with the roadway. Probing in the vicinity of the intersection of the extended east-west roadway and the north-south section line did not yield the discovery of the rock described in the 1877 record. The currently held position of the corner north of the roadway is considered valid and appears to match the best available evidence of the original lines.

This corner was originally established as a wood post in 1820.

Jackson Twp




 James S. Swift, IN LS 20200054


 Kenneth E. Hedge, County Surveyor

September 26, 2017

SECTION CORNER RECORD

BOONE COUNTY SURVEYOR'S OFFICE

SW 400-700

State Plane grid coordinates NAD83 (2011):

North: 1724182.17 East: 3087949.56 (U.S. survey feet)

Type of monument: Harrison, 4" disk 'Section Corner'

Depth: Six inches below adjacent gravel road surface

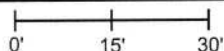
Indiana tie card references:

IN02_T18NR2W23_80 IN02_T18NR2W24_72

IN02_T18NR2W26_08 IN02_T18NR2W25_00

CORNER WITNESS DETAIL

SCALE 1" = 30'



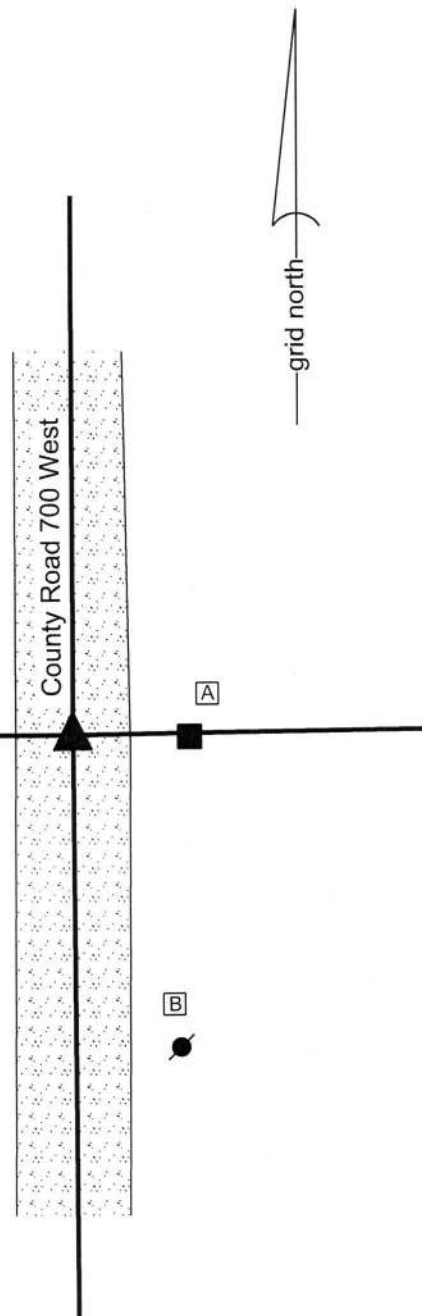
- A - Mag nail set in W. side wood post, 1' a.g., 16.6'
- B - Mag nail set in W. side power pole, 2' a.g., 50.8'
- C - Boone County witness mark, flush, 37.1'

Boone County witness mark is a 3/8" diameter x 2' long rebar bearing a metal cap stamped "Boone County Witness Point."

The Harrison monument was set in place of a vertical section of railroad rail found. A BCS record of August 16-18, 1858 states, with respect to this corner, "reest. from old witness trees. Set a rock 17, 24." A BCS tie card of March 20, 1969 shows the corner and states "no stone."

This corner was excavated on December 18, 2017. Prior to excavation, a vertical section of railroad rail was found at 4 inches deep in the gravel road opposite a wood end post on the east side of the road. Although the 1969 tie card does not mention the rail, it is considered most likely that the rail was set in association with the creation of that document. It is known to have been a common practice of BCS field crews from that era to set vertical sections of railroad rail but to not specifically state that fact on the associated documentation sheets. Excavation of an area extending 3 feet north, 3 feet south, 4 feet east and 4 feet west of the rail revealed no further evidence of the corner. The area was excavated to 16 inches deep, approximately 2 inches into the clay layer below the road bed. It is noted that the base material of the road bed was sufficiently substantial in size to indicate that the immediate vicinity of the corner was likely subject to standing in water when the road bed was established. The presence of an open ditch immediately to the north of and at similar elevation to the corner corroborates this supposition of previously standing water. It has been observed at other corners throughout the county that evidence of the previous presence of standing water yields a situation where ancient evidence such as a stone monument is not found.

The vertical section of rail fit with the local evidence of the corner in the form of the north-south roadway and the post on the east side of the road. The rail also fits reasonably well with the relative positions of proximate corners. The rail was held as marking the corner. The rail was removed and replaced with a Harrison monument in the same position. This corner was originally established as a wood post in 1820.



Kenneth E. Hedge
 Kenneth E. Hedge, County Surveyor

James S. Swift
 James S. Swift, IN LS 20200054
 January 31, 2018

Jackson Township

Section 23 T18N, R2W	Section 24 T18N, R2W
Section 26 T18N, R2W	Section 25 T18N, R2W

SECTION CORNER RECORD

SW 450-600

BOONE COUNTY SURVEYOR'S OFFICE

State Plane grid coordinates NAD83 (2011):

Corner 1 only: North: 1721599.73 East: 3093312.95 (U.S. survey feet)

Type of monument: Harrison, 4" disk 'Section Corner'

Depth: Two inches above adjacent ground

Indiana tie card references:

IN02_T18NR2W25_44 IN02_T18NR1W30_36

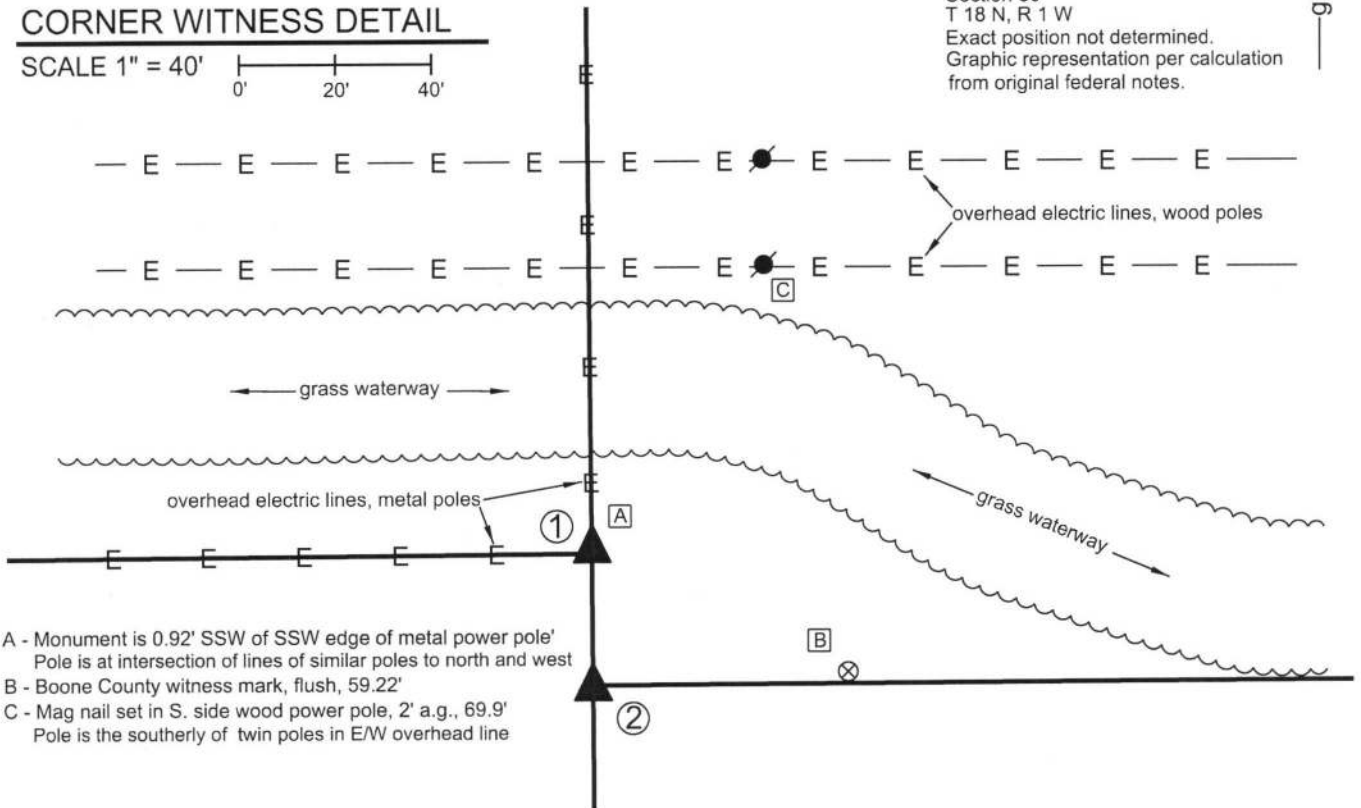
① East Quarter Corner
Section 25
T 18 N, R 2 W
Harrison Monument Set

② West Quarter Corner
Section 30
T 18 N, R 1 W
Exact position not determined.
Graphic representation per calculation
from original federal notes.



CORNER WITNESS DETAIL

SCALE 1" = 40'



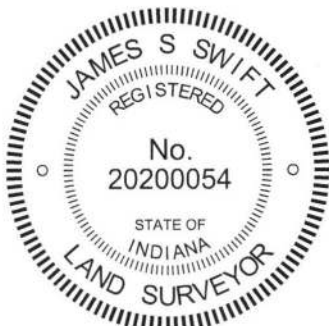
- A - Monument is 0.92' SSW of SSW edge of metal power pole' Pole is at intersection of lines of similar poles to north and west
- B - Boone County witness mark, flush, 59.22'
- C - Mag nail set in S. side wood power pole, 2' a.g., 69.9' Pole is the southerly of twin poles in E/W overhead line

The Harrison monument at Corner 1 was set in the same position as a wood corner post which has been removed. Corner 2 is not an original federal corner and the position of Corner 2 is not firmly established by this document.

With respect to Corner 1, a BCS record dated April 12, 1882 states "Set cor. Stone. Wit. Stone North 25 links, mark W. Wit. Stone N45W, 25 links, mark W." The stone called in the 1882 record was not searched for, nor were the two witness stones also called in that record. The immediate vicinity of the corner has been severely disturbed by the recent installation of a metal power pole. The area to the north of the corner, where the witness stones would be expected to be found, appears to have been excavated previously for purposes of the creation of an agricultural waterway.

The corner is shown as a wooden post on a survey by Frank T. Luse, dated December 7, 2013 and recorded as document 201300014151 in the Office of the Boone County Recorder. The position of the post as shown on the Luse survey was calculated with respect to the relative positions of other monuments shown on that survey. The Harrison monument was set at this calculated position. The monument falls very near a newly installed metal power pole. Uncertainties of up to 0.3 foot in all directions may be attributed to the calculation of the position of the post. It is noted that the stability of the monument may be affected by the large metal power pole in immediate proximity to the corner.

This corner was originally established as a wood post in 1819.

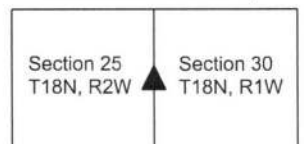


Kenneth E. Hedge
Kenneth E. Hedge, County Surveyor

James S. Swift
James S. Swift, IN LS 20200054

October 3, 2017

Jackson Township



SECTION CORNER RECORD

SW 450-700

BOONE COUNTY SURVEYOR'S OFFICE

State Plane grid coordinates NAD83 (2011):

North: 1721556.30 East: 3087964.93 (U.S. survey feet)

Type of monument: Harrison, 4" disk 'Section Corner'

Depth: Three inches above adjacent ground

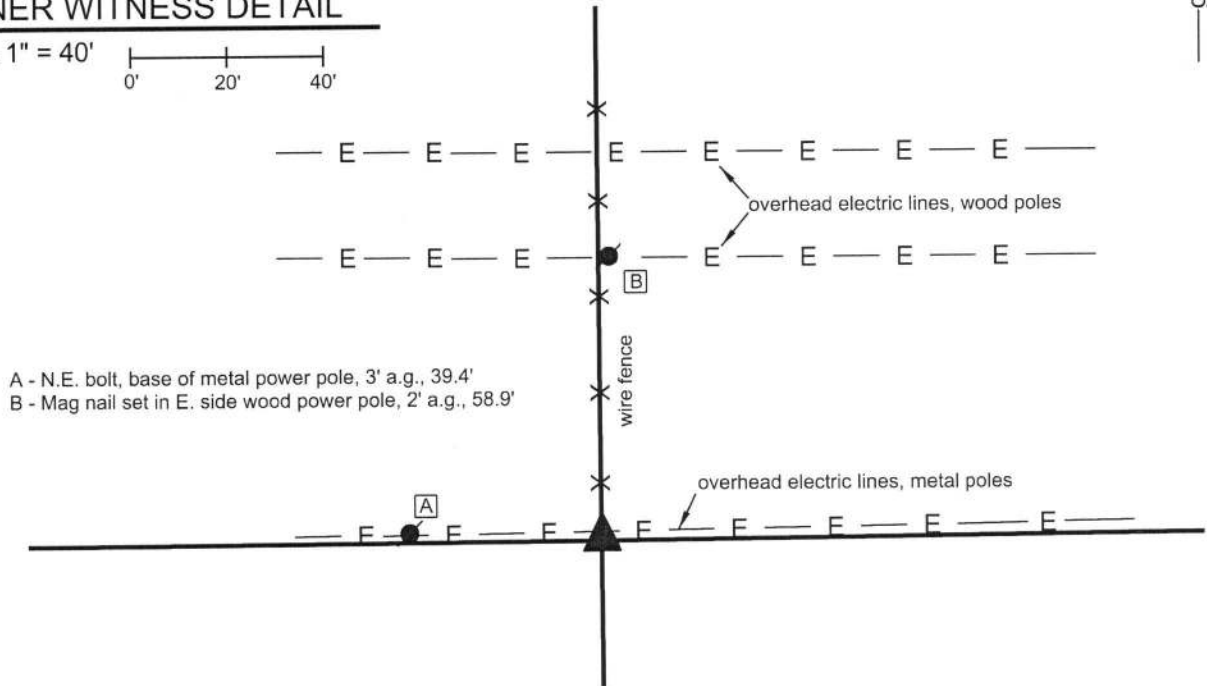
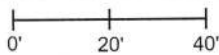
Indiana tie card references:

IN02_T18NR2W26_44 IN02_T18NR2W25_36



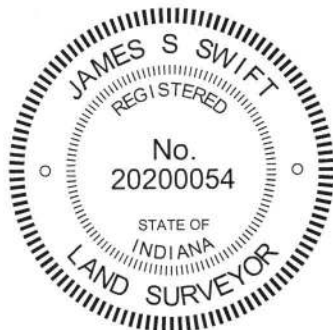
CORNER WITNESS DETAIL

SCALE 1" = 40'



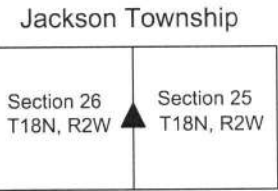
A - N.E. bolt, base of metal power pole, 3' a.g., 39.4'
B - Mag nail set in E. side wood power pole, 2' a.g., 58.9'

The Harrison monument was set in place of a rebar found. A BCS record dated January 24-25, 1878 states, with respect to this corner, "Reestablished by running lines. Set rock 21.17.8 + on top." A subsequent record dated June 1, 1881 notes "found corner." No recent BCS tie cards were found referencing this corner. Excavation was performed at this corner on October 19, 2018. A rebar bearing with a yellow plastic cap stamped "Dodge, SO288" was found at the southerly terminus of a fence to the north, in-line with an east-west field division. A wood corner post with fencing to the north and west was found in April, 2016. The position of the rebar indicates that it had been at the southwest edge of the post, approximately 0.8 foot southwest of the center of the post, as located in 2016. The post was not present in October, 2018. It is noted that a power line with metal poles was installed along the east-west half section lines in 2017 and it is believed that the installation of the power line included disruption of evidence along the east-west line. Excavation in the immediate vicinity of the rebar and position of the post revealed numerous rocks found at various depths, none of which matched the description of the stone set in 1878. The position of the rebar was accepted as the best available evidence of the corner. The rebar was held as marking the specific location of the corner. The rebar was removed and replaced with a Harrison monument in the same position. This corner was originally established as a wood post in 1820.



Kenneth E. Hedge
Kenneth E. Hedge, County Surveyor

James S. Swift
James S. Swift, IN LS 20200054
January 9, 2019



SECTION CORNER RECORD

SW 500-600

BOONE COUNTY SURVEYOR'S OFFICE

State Plane grid coordinates NAD83 (2011):

Corner 1: North: 1718964.41 East: 3093332.04 (U.S. survey feet)

Corner 2: North: 1718929.45 East: 3093331.99 (U.S. survey feet)

Type of monument: Harrison, 4" disk 'Section Corner'

Depth: One inch below adjacent road or ground

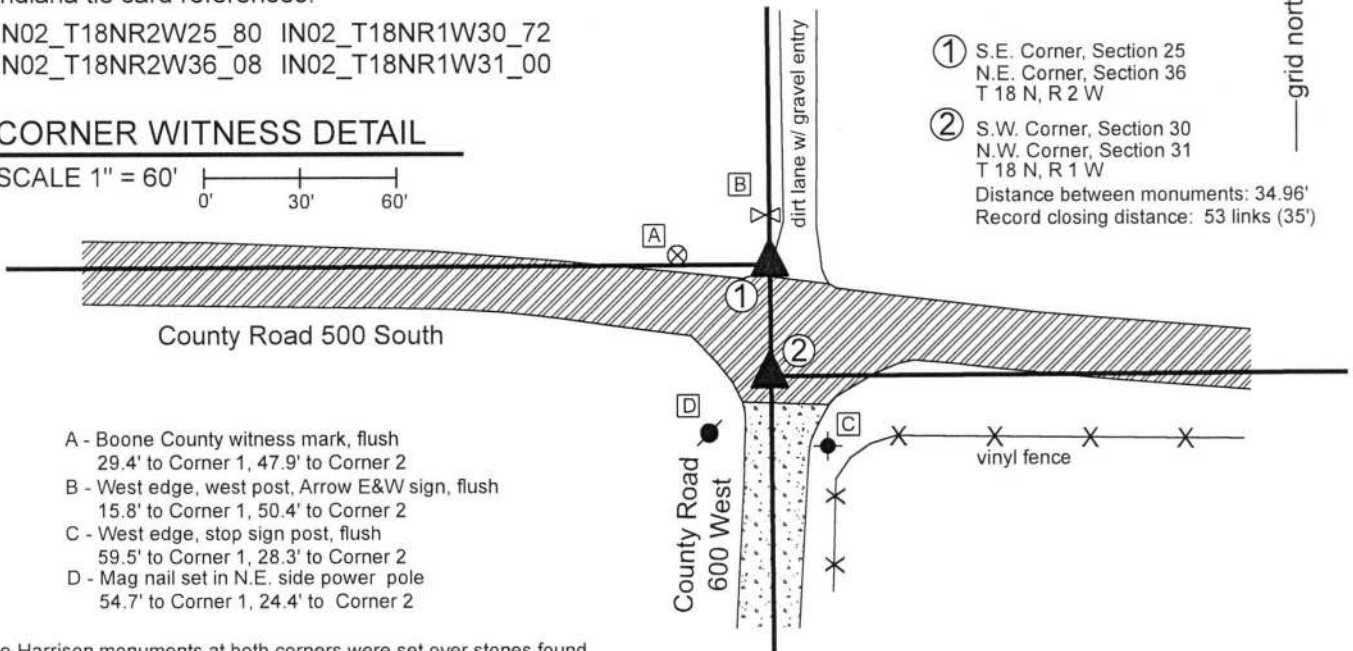
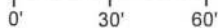
Indiana tie card references:

IN02_T18NR2W25_80 IN02_T18NR1W30_72

IN02_T18NR2W36_08 IN02_T18NR1W31_00

CORNER WITNESS DETAIL

SCALE 1" = 60'



- ① S.E. Corner, Section 25
N.E. Corner, Section 36
T 18 N, R 2 W
 - ② S.W. Corner, Section 30
N.W. Corner, Section 31
T 18 N, R 1 W
- Distance between monuments: 34.96'
Record closing distance: 53 links (35')

- A - Boone County witness mark, flush
29.4' to Corner 1, 47.9' to Corner 2
- B - West edge, west post, Arrow E&W sign, flush
15.8' to Corner 1, 50.4' to Corner 2
- C - West edge, stop sign post, flush
59.5' to Corner 1, 28.3' to Corner 2
- D - Mag nail set in N.E. side power pole
54.7' to Corner 1, 24.4' to Corner 2

The Harrison monuments at both corners were set over stones found.

A BCS record dated April 22, 1869 states, with respect to Corner 1, "Reest. Set two rocks. One 5.4.3 +. Top one 20.16.10 +." A BCS record dated December 12-13, 1876 states, with respect to Corner 2, Reestablished 53 links S. of Corner Secs. 25 + 36. Rock 15,12,4 + on E. side."

No recent BCS tie cards were found referencing this corner.

Excavation was performed at Corner 2 on August 29, 2018 and excavation was performed at Corner 1 on September 26, 2018.

Prior to excavation, vertical sections of 5/8 inch diameter rebars were found ostensibly marking each corner, separated by 35.2 feet, very close to the record closing distance of 53 links (34.98 feet). Excavation revealed the monuments described in the 1869 and 1876 records at the respective corners. The stone at Corner 1 was found at 12 inches deep, slightly north of the roadway, below the gravel entry for the farm lane to the north. This stone had a distinct etched + mark on the top center. The west side of the stone was exposed and found to be 21 inches tall and another stone was found situated below. The top of rock measured 11 inches N-S by 8 inches E-W and the stone appeared that it is yet larger in both dimensions further down the rock. For purposes of preserving the integrity of the edge of the drive while setting the monument the full N-S, E-W dimensions were not exposed and measured. The stone is clearly the top stone described in the 1869 record and was accepted as marking the corner. A Harrison monument was set over the etched + mark on the top of the rock.

Excavation at Corner 2 revealed the stone described in the 1876 record at 22 inches deep in the road. This stone is 53 links south of the stone at Corner 1, though that fact was only confirmed after the later excavation of Corner 1. The stone is of sandstone material which was breaking up as it was interacted with. No specific marks were found and it is noted that the top of the stone may have previously broken off, due to the soft sandstone material. The top 10 inches of the stone were exposed. At 10 inches below the top of the stone, it measured 12 inches N-S by 4 inches E-W matching two of the dimensions of described in the 1876 record. The stone was left in place and a Harrison monument was set over the top, high point of the stone. The rebars were both removed during excavation. The rebar near Corner 1 had been 3.1 feet south and 1.1 foot west of the mark on the stone. The rebar near Corner 2 had been 3.3 feet south and 0.8 foot west of the high point of the stone found at that corner. It is noted that the Harrison monument set over the stone at Corner 2 is 0.3 foot west of a straight line connecting Corner 1 and the standard corner 1/2 mile south (see Corner SW 550-600). Corner 1 was originally set in 1819 and Corner 2 was originally set in 1820.

Jackson Township



Kenneth E. Hedge
Kenneth E. Hedge, County Surveyor

James S. Swift
James S. Swift, IN LS 20200054
October 1, 2018

Section 25 T18N, R2W	Section 30 T18N, R1W
Section 36 T18N, R2W	Section 31 T18N, R1W