

SECTION CORNER RECORD

SE 400-1100

BOONE COUNTY SURVEYOR'S OFFICE

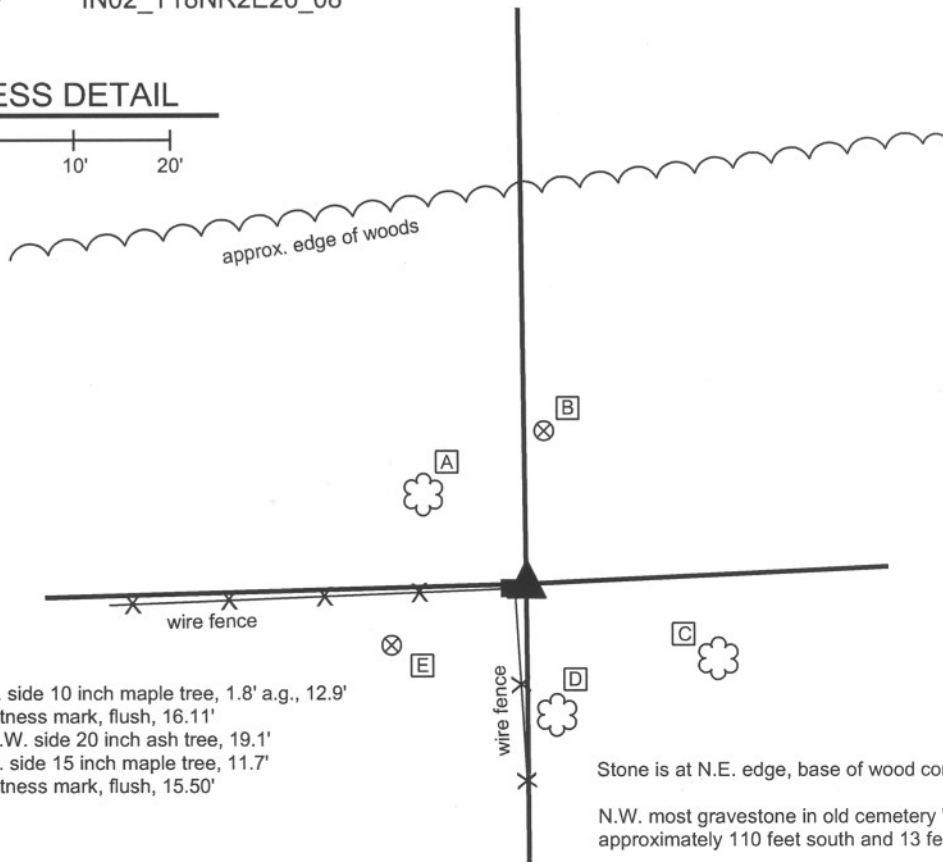
State Plane grid coordinates NAD83 (NSRS 2007):
North: 1725930.58 East: 3183484.27 (U.S. survey feet)

Type of monument: Stone
Depth: 2 inches above grade

Indiana tie card references:
IN02_T18NR2E23_80 IN02_T18NR2E24_72
IN02_T18NR2E25_00 IN02_T18NR2E26_08

CORNER WITNESS DETAIL

SCALE 1" = 20'



- A - Mag nail set in E. side 10 inch maple tree, 1.8' a.g., 12.9'
- B - Boone County witness mark, flush, 16.11'
- C - Mag nail set in N.W. side 20 inch ash tree, 19.1'
- D - Mag nail set in N. side 15 inch maple tree, 11.7'
- E - Boone County witness mark, flush, 15.50'

Stone is at N.E. edge, base of wood corner post.

N.W. most gravestone in old cemetery "John Purdin" is approximately 110 feet south and 13 feet east of corner.

The stone was found in place.

A BCS record of April 14, 1880 states "Reestablished from Beech bearing tree. Set Rock 18.9 by 11 in. + on top." No BCS tie cards were found for this corner. Numerous private surveys call for a stone found. The stone is visible in the ground, protruding approximately 2 inches out of the ground at the northeast corner of the base of a an old wood corner post. The "+" is clearly visible on top, which represents the precise location held as the corner for this tie card.

This corner was originally established as a wood post in July, 1821.



Kenneth E. Hedge
Kenneth E. Hedge, County Surveyor

James S. Swift
James S. Swift, IN LS 20200054

March 11, 2009 Revised July 14, 2010

Eagle Township

Section 23 T18N, R2E	Section 24 T18N, R2E
Section 26 T18N, R2E	Section 25 T18N, R2E

PHOTOGRAPHIC DOCUMENTATION

Date of photography: March 6, 2009

The stone from above.



The stone from above and east.



The stone, old wood post and fiberglass witness post.
View from the east.



For details and documentation, refer to related sheet "Section Corner Record."

SECTION CORNER RECORD

SE 400-1150

BOONE COUNTY SURVEYOR'S OFFICE

State Plane grid coordinates NAD83 (NSRS 2007):

North: 1726054.28 East: 3186137.66 (U.S. survey feet)

Type of monument: 5/8 inch rebar with metal cap stamped "Boone County Surveyor" set in concrete at base of wood post.

Depth: approximately 6 inches above adjoining grade.

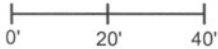
Indiana tie card references:

IN02_T18NR2E24_76

IN02_T18NR2E25_04

CORNER WITNESS DETAIL

SCALE 1" = 40'



- A - Mag nail set in S. side, 20 inch diameter oak tree, 2.0' a.g., 7.6'
- B - 5/8 inch rebar with plastic cap stamped 'Polaris LS9600005', flush, 30.0'
- C - N.W. corner, black metal post for Pool area fence, 35.0'
- D - Center of cul-de-sac monument (copperweid), flush, 159.2'

The rebar was set in place of a rebar found at the south edge of a wood corner post. No specific descriptions of the corner were found in the BCS "Surveyor's Record." The corner is shown as the terminal point for measurements in 1834. No other references were found in that record. No recent BCS tie cards were found. This corner is shown on several surveys as being a corner fence post found, including a survey by Richard H. Miller, Schneider Engineering Corporation, recorded in Survey Book 2, page 25 (Instrument 96080301). This survey is referenced as providing the underlying perimeter boundary on the plats of Brittany Chase, Section 1 (Plat Book 9, p.33-34) and Section II (Plat Book 10, p.63-64.) The plat of Willow Ridge (Plat Book 13 p.12-16) references two surveys by Donn M. Scotten, Benchmark Surveying, Inc; Survey Book 5, p.36-38, which references a computed position for the corner, and Survey Book 5, p.39-40 which shows the corner as a fence post accepted.

A wood corner post was found at the intersection of fences to the north and west. The post is stable but not vertical, leaning north and west. A 5/8 inch bearing a cap "Schneider FIRM #0001" was found at the south edge of the base of the post. Given the leaning condition of the post, the exact horizontal position of the post is subject to interpretation by a field surveyor. The position of the rebar is over the portion of the post within the ground and was accepted as an accurate location of the original location of the post. Several stones were found around the base of the post, all of which appeared to be brace rocks for the post rather than specific section corner monuments. Another 5/8 inch rebar was found approximately 1 foot north and 2 feet west of the corner post and Schneider rebar.

It is noted that this corner falls 34.6 feet north of a straight line connecting the section corners approximately one-half mile to the east and west. No explanation is offered for this. The existing east-west fence is considered the dominant evidence for the N-S position of the corner and the existing north-south fence is considered the dominant evidence for the E-W position of the corner. The Schneider rebar was held as the precise location of the corner. This rebar was removed and a 36 inch long rebar was set vertically along side the post, driven into the south edge of the post below grade. The new rebar and the south edge of the post were encased in concrete for stability. Up to 2 feet of uncertainty may be associated with the relative position of this corner with interior monumentation in the adjoining subdivisions. However, uncertainty associated with the corner itself is only approximately 0.5 of a foot, reflecting variations in interpretation of the position of the wood post itself. This corner was originally established as a wood post in July, 1821.

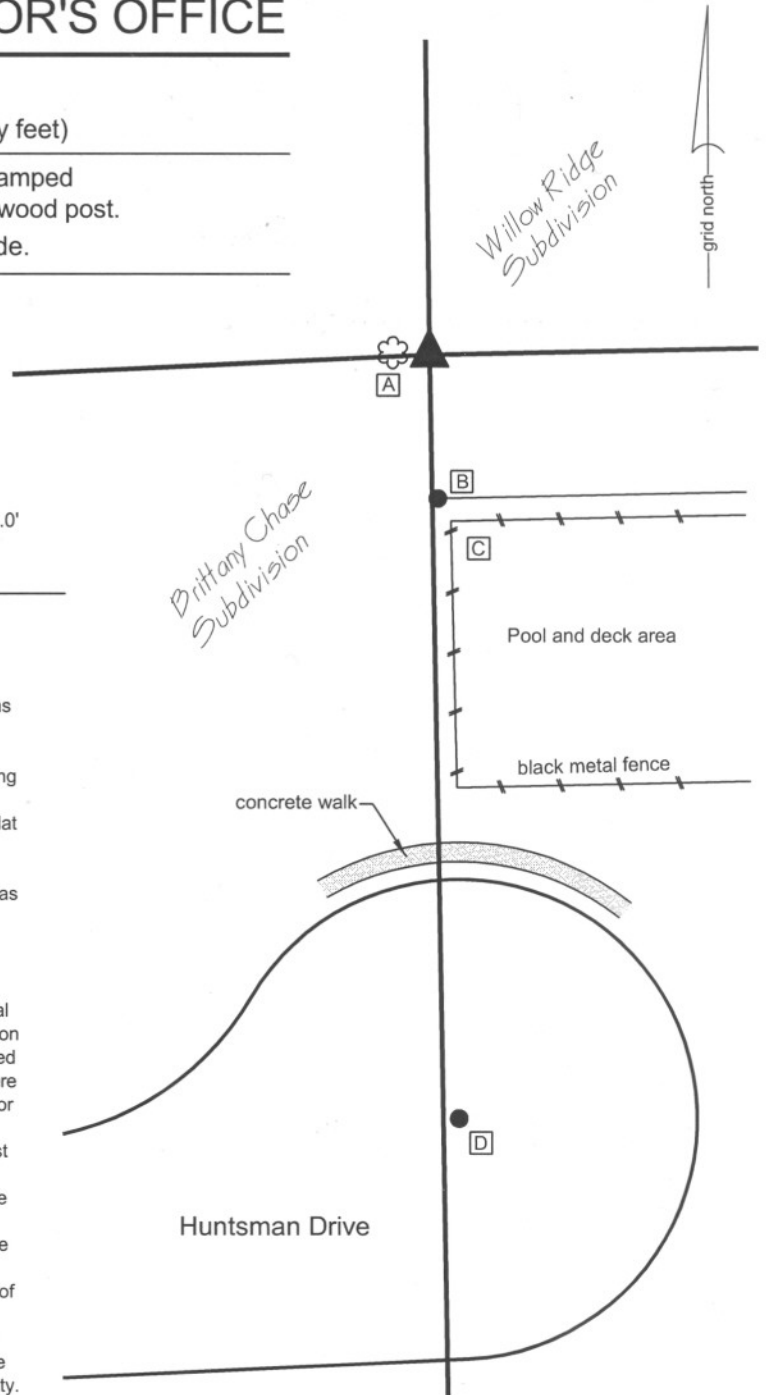
Kenneth E. Hedge

 Kenneth E. Hedge, County Surveyor

James S. Swift

 James S. Swift, IN LS 20200054

July 20, 2011



Eagle Twp

Section 24 T18N, R2E
▲
Section 25 T18N, R2E

SECTION CORNER RECORD

SE 400-1200

BOONE COUNTY SURVEYOR'S OFFICE

State Plane grid coordinates NAD83 (NSRS 2007):

North: 1726108.76 East: 3188792.64 (U.S. survey feet)
(corner 1 only)

Type of monument: Harrison, 4" disk 'Section Corner'

Depth: flush with adjoining ground

Indiana tie card references:

IN02_T18NR2E24_80

IN02_T18NR2E25_08

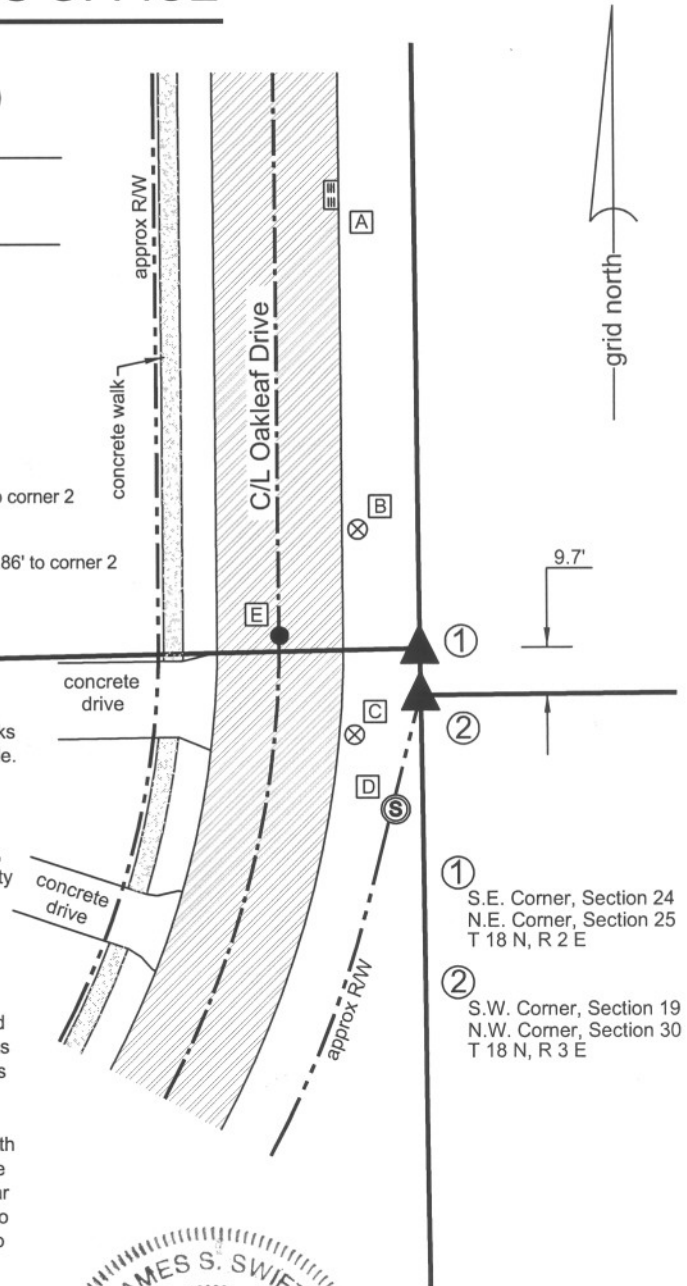
CORNER WITNESS DETAIL

SCALE 1" = 40'



- A - Grate inlet, S.E. corner, top casting, chiseled "x", 92.90' to corner 1, 102.48' to corner 2
 - B - Boone County witness mark, flush, 27.85' to corner 1, 36.78' to corner 2
 - C - Boone County witness mark, flush, 22.62' to corner 1, 16.14' to corner 2
 - D - Sanitary manhole, N. edge, top of casting, chiseled "x", 31.34' to corner 1, 21.86' to corner 2
 - E - Center line monument (rebar), flush, 29.34' to corner 1, 31.92' to corner 2
- Boone County witness mark is a 3/8" diameter x 2' long rebar bearing a metal cap stamped "Boone County Witness Point."

The harrison monument was set in place of a rebar found. A BCS record of November 3, 10, 17, 1866 states "ReEstablished Set two Rocks one 6.5.3 in. marked +. Top Rock 20.15.9 in. marked on top and + on West side." No recent BCS tie cards were found for this corner. The transcribed notes from the original government survey with for township 18 north, range 3 east read "West Between Secs. 19 & 30. 82.60 Intersected Range line 15 lks S of post." The adjoining land in Boone County was platted in 1997 as Austin Oaks, Section 9, as recorded in Plat Book 9, page 46 in the Office of the Boone County Recorder. This plat shows the corner as a one inch iron pipe found. The reference to this monument agrees with the underlying boundary survey to this plat, which is recorded in Survey Book 1, pages 79-80. This survey shows the corner as a one inch iron pipe and also shows the closing section corner from range 3 east as being a 5/8 inch rebar, 9.7 feet north. This survey appears to reverse the two corners, showing the closing corner falling north of the standard corner, rather than south, per the government notes. Significant excavation was not performed at this corner as it is obvious that significant land disturbance has taken place and that the corners fall in an area of cut associated with the construction of Oakleaf Drive. Prior to monumentation, two rebars were found, both with caps stamped Schneider, FIRM 0001, the company which created both the aforementioned plat and underlying surveys. The rebars fit precisely with the locations of the iron pipe and rebar shown on the survey and the southerly rebar fits with the location of the iron pipe shown on the plat. The southerly rebar also falls at the westerly prolongation of an old fence to the east. Given that, prior to land disturbing activities, two monuments were found, at nearly the record closing distance apart, the southerly one of which fits with the local evidence in range 3 east in the form of the fence to the east and that this geometrical relationship fits with the government notes, the monuments were held as marking the respective corners, with the standard corner held as the northerly corner, per the government notes and the local evidence. This conclusion is supported the Hamilton County Surveyor's Office. Harrison monuments were set at both corners. The standard corner (Boone County) was set in the position of the northerly found rebar and the closing corner (Hamilton County) was set at the N-S dimension of the southerly closing rebar, but was placed on the range line, 0.1 foot east of the position of the rebar. The standard corner was monumented on August 27, 2009 and the closing corner was monumented, in cooperation with the Hamilton County Surveyor's Office on September 17, 2009. The standard corner was originally established as a wood post in 1819.



- ① S.E. Corner, Section 24
N.E. Corner, Section 25
T 18 N, R 2 E
- ② S.W. Corner, Section 19
N.W. Corner, Section 30
T 18 N, R 3 E



Eagle Township
Boone County

Clay Township
Hamilton County

Section 24 T18N, R2E	Section 19 T18N, R3E
Section 25 T18N, R2E	Section 30 T18N, R3E

Kenneth E. Hedge
Kenneth E. Hedge, County Surveyor

James S. Swift
James S. Swift, IN LS 20200054
July 14, 2010

SECTION CORNER RECORD

SE 450-1100

BOONE COUNTY SURVEYOR'S OFFICE

State Plane grid coordinates NAD83 (NSRS 2007):
North: 1723290.34 East: 3183509.39 (U.S. survey feet)

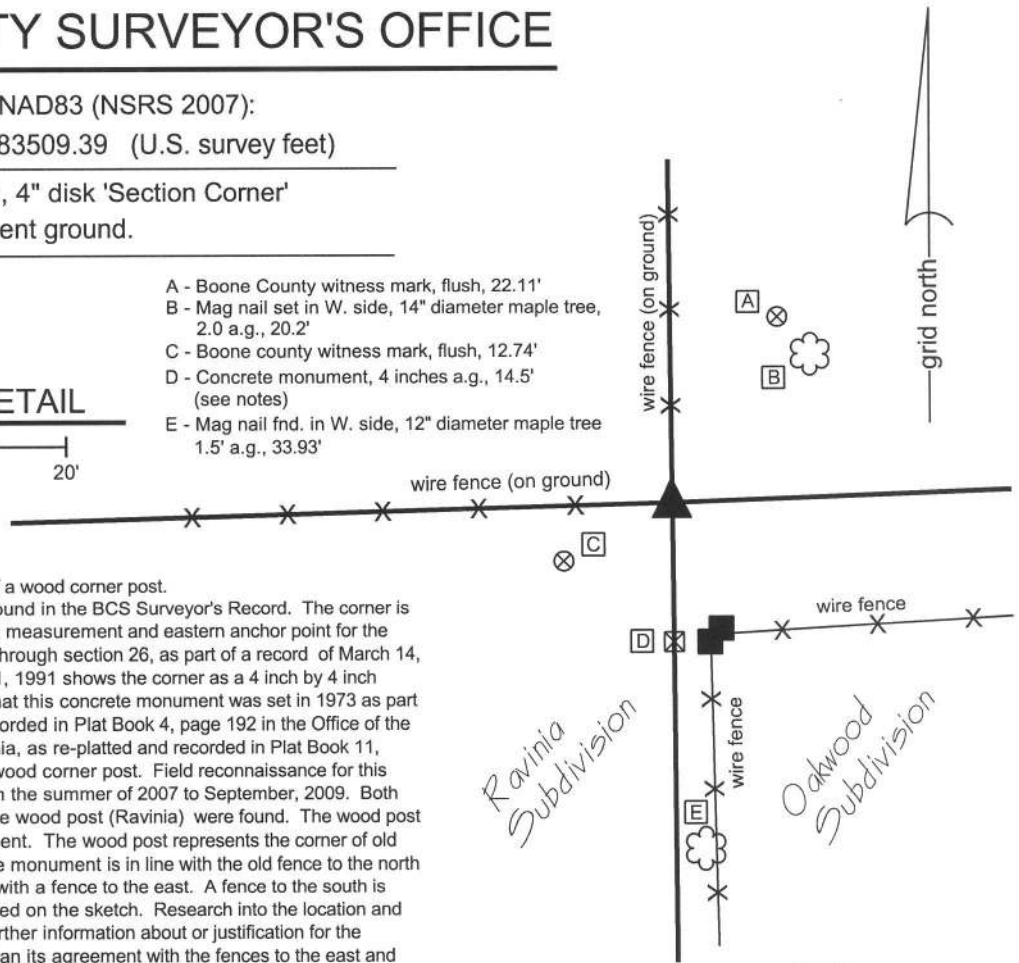
Type of monument: Harrison, 4" disk 'Section Corner'
Depth: 3 inches above adjacent ground.

Indiana tie card references:
IN02_T18NR2E25_36
IN02_T18NR2E26_44

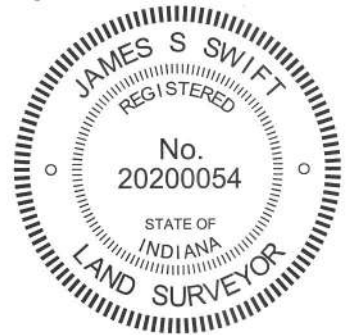
- A - Boone County witness mark, flush, 22.11'
- B - Mag nail set in W. side, 14" diameter maple tree, 2.0 a.g., 20.2'
- C - Boone county witness mark, flush, 12.74'
- D - Concrete monument, 4 inches a.g., 14.5' (see notes)
- E - Mag nail frnd. in W. side, 12" diameter maple tree 1.5' a.g., 33.93'

CORNER WITNESS DETAIL

SCALE 1" = 20'
0' 10' 20'

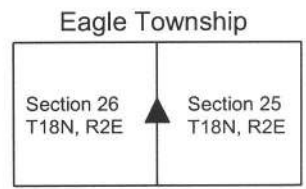


The harrison monument was set in place of a wood corner post. No specific description of this corner was found in the BCS Surveyor's Record. The corner is shown, however, as the terminal point for a measurement and eastern anchor point for the establishment of the E-W half section line through section 26, as part of a record of March 14, 15, 16, 1892. A BCS tie card dated May 31, 1991 shows the corner as a 4 inch by 4 inch concrete monument found. It is believed that this concrete monument was set in 1973 as part of the platting of Oakwood Subdivision, recorded in Plat Book 4, page 192 in the Office of the Boone County Recorder. The plat of Ravinia, as re-platted and recorded in Plat Book 11, page 56, demonstrates the corner to be a wood corner post. Field reconnaissance for this corner was performed at various times from the summer of 2007 to September, 2009. Both the concrete monument (Oakwood) and the wood post (Ravinia) were found. The wood post was 14.5 feet north of the concrete monument. The wood post represents the corner of old fences to the west and north. The concrete monument is in line with the old fence to the north (beginning at the wood post) and is in line with a fence to the east. A fence to the south is slightly east of both objects, as demonstrated on the sketch. Research into the location and documentation of this corner yielded no further information about or justification for the location of the concrete monument other than its agreement with the fences to the east and north. However, significant evidence was found in support of the position of the wood post as the corner. The aforementioned 1892 record demonstrates that the line from the west quarter corner of section 26 (H) and the east quarter corner (D) was measured. Subsequent measurements and references indicate that the center of section (O) as well as two other corners, being east of corner "H" by one quarter mile (9) and one eighth mile (15), respectively, were established and monumented as part of the same three day field campaign. Another record, dated March 14 and 15, 1894, exactly two years later, demonstrates that another corner on the E-W half section line was established, referred to as corner "P" and being east of corner "O" at the center of section. Notably, the record also shows that the same Deputy Surveyor, Thomas W. Huckstep, was on both crews as was one of the chainmen, Thomas H. Shelburn. While the 1894 record does not mention corner "D" which is the subject of the current record, it is reasonable to conclude that two field parties with common members would hold the same line on campaigns two years apart. As part of the field reconnaissance for the subject corner and the west quarter corner of section 26, the stone at corner "15" was found, the witness stone 16.5 feet west of corner "9" was found, the location of the west quarter corner of section 26 was re-established per the location of these two stones and the witness stones to corner "O" (See the record for corner SE-450-1000) and a wood post was found at the occupied corner representing corner "p". This post at "p" also represents the westerly terminus of the fence which extends west from the wood post in question as part of the current record. All of the monuments and evidence found along the E-W half section line fit well with a line connecting the west quarter corner of section 26 with the wood post in question, with individual stones or posts being no more than 1.5 feet from the straight line. Clearly, the wood corner post at the intersection of the old fences to the north and west is at or near the corner held by the 1892 and 1894 field parties. It is also noted that the post falls very close to the midpoint of the line connecting the northeast and southeast corners of section 26. Excavation of the corner took place on September 18 and 21, 2009. Several stones were found around the post but all appeared to be rocks intended to brace the post rather than specific section corner stones. The post itself is the wood from a Hedge tree, also known as a Hedge Apple tree or Osage Orange tree. This wood is particularly dense and resistant to subteranann rotting. Though the post appeared on the outside to be very old and the fencing attached to it was clearly old, the post was in nearly perfect condition on the inside. It is not known how old the post is, but it was observed that it could have stood for many, many more years without significant deterioration. The post may well have been present at the time of the 1892 field campaign. The post was partially removed, with the bottom portion left in the ground, and the harrison monument was set in place of the post, directly over the bottom portion. The concrete monument was left in place but is not considered to represent the location of the corner. This corner was originally established as a wood post in July, 1821.



James S. Swift
James S. Swift, IN LS 20200054
July 14, 2010, Revised April 3, 2013

Kenneth E. Hedge
Kenneth E. Hedge, County Surveyor



SECTION CORNER RECORD

SE 450-1200

BOONE COUNTY SURVEYOR'S OFFICE

State Plane grid coordinates NAD83 (NSRS 2007):

North: 1723473.38 East: 3188828.58 (U.S. survey feet)

Corner 1 only

CORNER WITNESS DETAIL

SCALE 1" = 40'

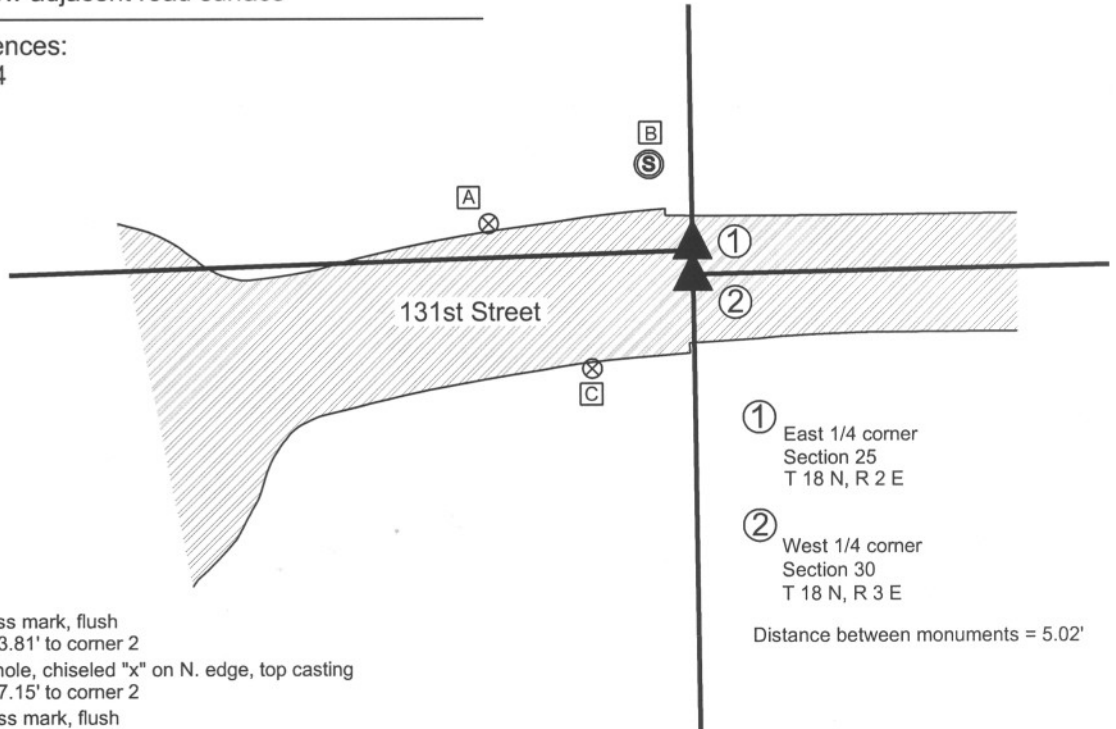


Type of monument: Harrison, 4" disk 'Section Corner'

Depth: One inch below adjacent road surface

Indiana tie card references:

IN02_T18NR2E25_44



- A - Boone County witness mark, flush
42.77' to corner 1, 43.81' to corner 2
- B - Sanitary sewer manhole, chiseled "x" on N. edge, top casting
22.43' to corner 1, 27.15' to corner 2
- C - Boone County witness mark, flush
32.20' to corner 1, 28.64' to corner 2

① East 1/4 corner
Section 25
T 18 N, R 2 E

② West 1/4 corner
Section 30
T 18 N, R 3 E

Distance between monuments = 5.02'

Boone County witness mark is a 3/8" diameter x 2' long rebar bearing a metal cap stamped "Boone County Witness Point."

The harrison monument was set over a stone found.

This corner is not specifically described in the BCS Surveyor's Record, but it is mentioned as the terminal point for a measurement in a record of 1834. A BCS tie card dated May 31, 1991 shows the corner as a 5/8 inch rebar found 0.3 feet below the asphalt in the center of the pavement. A Hamilton County Surveyor's Office record dated February 9, 2009 shows the associated closing corner as a harrison monument set over a stone in July, 2004. This corner was excavated on September 11, 2009. Prior to excavation the harrison monument referenced by Hamilton County was visible at the surface and the 5/8 inch rebar referenced by Boone County was found 6 inches below grade, bent substantially. The rebar was removed during excavation but the existing harrison monument was left in undisturbed. Excavation revealed a stone found at 1 foot deep. The stone measures 9 inches N-S by 9 inches E-W with 11 inches exposed. The height is approximately 13 inches. The stone is fully embedded in the clay layer below the road with the top of the stone at the top of the clay layer. No specific markings were found on the stone. The stone was left in place and the harrison monument was set over the stone. The stone is 5.02 feet north of the existing harrison monument and is 1.7 feet north and 0.2 feet east of the position of the rebar. The closing corner was originally established as a wood post in 1819.

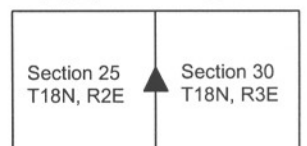


Kenneth E. Hedge
Kenneth E. Hedge, County Surveyor

James S. Swift
James S. Swift, IN LS 20200054
July 14, 2010

Eagle Township
Boone County

Clay Township
Hamilton County



PHOTOGRAPHIC DOCUMENTATION

Date of photography: September 11, 2009

The bent rebar within the area of excavation, along with the harrison at the closing corner.



View of the stone as first exposed.
View from the south.



View of the stone after it dried in the air briefly.
View from the southwest.



View of the stone from above and east.



For details and documentation, refer to related sheet "Section Corner Record."

SECTION CORNER RECORD

BOONE COUNTY SURVEYOR'S OFFICE

SE 500-1100

State Plane grid coordinates NAD83 (NSRS 2007):

North: 1720649.93 East: 3183531.59 (U.S. survey feet)

Type of monument: Harrison, 4" disk 'Section Corner'

Depth: One inch below adjacent road surface

Indiana tie card references:

IN02_T18NR2E25_72 IN02_T18NR2E26_80

IN02_T18NR2E35_08 IN02_T18NR2E36_00

CORNER WITNESS DETAIL

SCALE 1" = 40'



- A - Mag nail set in E. side power pole, 2.0' a.g., 15.4'
- B - Boone County witness mark, flush, 39.17'
- C - Mag nail set in N. side power pole, 2.0' a.g., 47.0'

Boone County witness mark is a 3/8" diameter x 2' long rebar bearing a metal cap stamped "Boone County Witness Point."

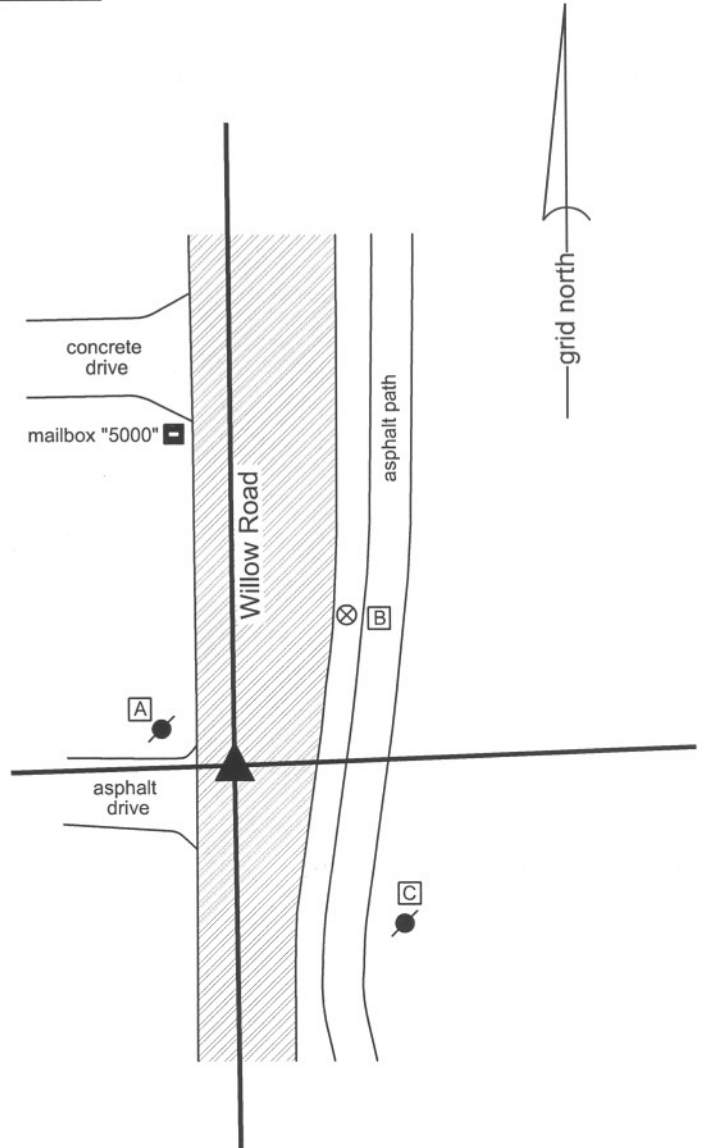
The harrison monument was set in place of a railroad spike and iron pipe found.

No specific descriptions of this corner were found in the BCS Surveyor's Record, but it is mentioned as the terminal points for several measurements in 1834 and another measurement in 1859. A BCS tie card dated April 15, 1991 shows the corner as a railroad spike found. A BCS reference sheet dated June 15, 1989 shows the same. All known surveys and plats in this vicinity have held the railroad spike as the.

This corner was monumented on July 30, 2009. Significant excavation was not performed as utility markings clearly indicate that a water main runs along the center of the Willow Road, adjacent to and immediately east of the corner. It is considered highly likely that any corner stone which may have existed at this corner would have been obliterated during the installation of the water main.

Prior to monumentation, a railroad spike was found in a hole in the asphalt approximately 3 inches below grade. A 1 inch diameter iron pipe was found directly below the railroad spike. No other evidence was found. The harrison monument was set in place of the railroad spike and iron pipe.

This corner was originally established as a wood post in July, 1821.



Kenneth E. Hedge
 Kenneth E. Hedge, County Surveyor

James S. Swift
 James S. Swift, IN LS 20200054
 July 14, 2010

Eagle Township

Section 26 T18N, R2E	Section 25 T18N, R2E
Section 35 T18N, R2E	Section 36 T18N, R2E

SECTION CORNER RECORD

SE 500-1150

BOONE COUNTY SURVEYOR'S OFFICE

State Plane grid coordinates NAD83 (NSRS 2007):

North: 1720747.25 East: 3186197.39 (U.S. survey feet)

Type of monument: Harrison, 4" disk 'Section Corner'

Depth: One inch below adjacent road surface

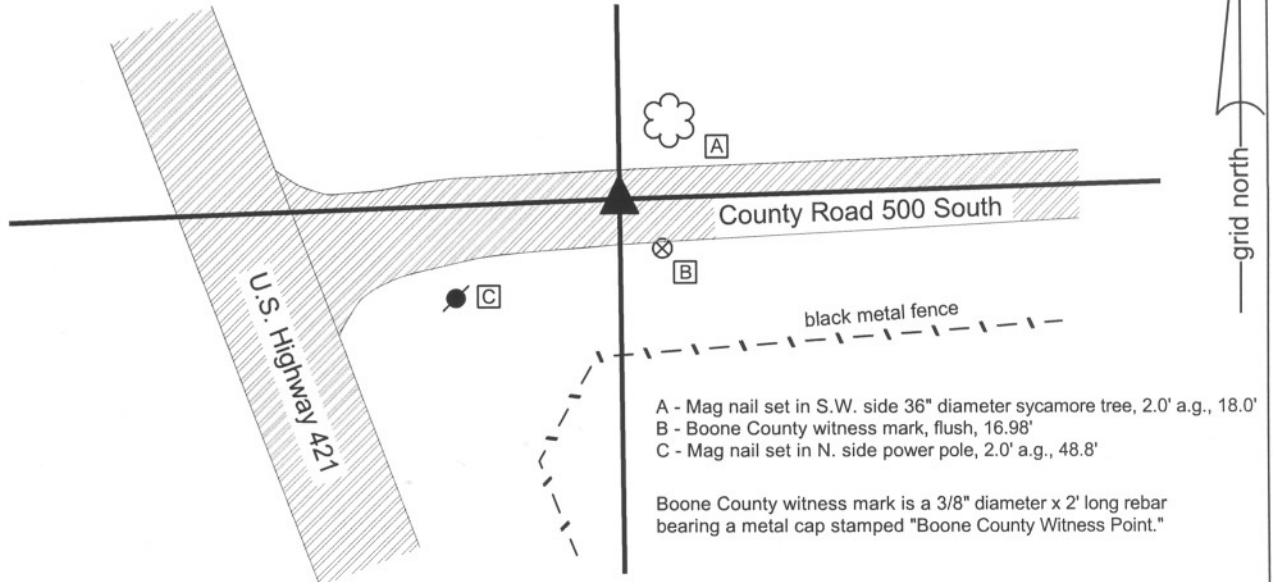
CORNER WITNESS DETAIL

SCALE 1" = 50'



Indiana tie card references:

IN02_T18NR2E25_76 IN02_T18NR2E36_04



- A - Mag nail set in S.W. side 36" diameter sycamore tree, 2.0' a.g., 18.0'
- B - Boone County witness mark, flush, 16.98'
- C - Mag nail set in N. side power pole, 2.0' a.g., 48.8'

Boone County witness mark is a 3/8" diameter x 2' long rebar bearing a metal cap stamped "Boone County Witness Point."

The harrison monument was set at a calculated position.

This corner is mentioned in the BCS Surveyor's Record only twice, once as the original establishment of the corner in 1821 and again as the terminal point for a measurement in 1834. No recent BCS tie cards were found referencing the corner. This corner falls in an area transitioning from cut on the north side to a significant amount of fill on the south side. It is considered unlikely that any early monuments would be found, due to clear previous disruption of the ground associated with the grading of the road in this vicinity.

A railroad spike had been set at a calculated location for the corner in 1994, as documented on a private survey recorded in Survey Book 1, page 80. That survey states that the corner was established at the same distance and on the same line between a P.K. nail found at the southeast corner of the southwest quarter of the southeast quarter of section 25 and a 3/4 inch rebar found at the southeast corner of section 25. However, during excavation on August 21, 2009 a stone was found at the closing corner adjacent to the southeast corner of section 25 and the southeast corner of section 25 was established at closing distance south of that stone, which point is 2.0 feet north and 0.4 feet west of the 3/4 inch rebar, as documented on the section corner record sheet for corner SE-500-1200. On November 19, 2009 the aforementioned southeast corner of the southwest quarter of the southeast quarter was excavated. The referenced P.K. nail was found at 3 inches deep, a 1/2 inch rebar was found at 12 inches deep and a railroad rail on end was found at 21 inches deep. The nail was approximately over the rebar which was approximately over the rail. No stones or other evidence were found and the center of the top of the rail was accepted as marking the corner. The position of the southwest corner of the southeast quarter of section 25, which is the subject corner of this record, was calculated by the same means as documented on the aforementioned private survey, but holding the revised position for the southeast corner of the section. That is, the line from the harrison monument at the southeast corner of section 25 through the rail 1/4 mile west was extended west at twice the distance. The computed position for the corner falls 1.8 feet south and 0.4 feet east of the railroad spike. It is noted that the computed position fits better with the local evidence in the form of the center of the County Road 500 South to the East, as did the revised position for the southeast corner fit better with the center of the road extended west from that corner. The harrison monument was set at the computed position and the railroad spike was removed.

This corner was original established as a wood post in July, 1821.



Kenneth E. Hedge
 Kenneth E. Hedge, County Surveyor

James S. Swift
 James S. Swift, IN LS 20200054

July 14, 2010

Eagle Twp

Section 25
T18N, R2E

▲
 Section 36
T18N, R2E

SECTION CORNER RECORD

SE 500-1200

BOONE COUNTY SURVEYOR'S OFFICE

State Plane grid coordinates NAD83 (NSRS 2007):

North: 1720827.16 East: 3188864.00 (U.S. survey feet) (Standard corner)

Corner 1 only

Type of monument: Harrison, 4" disk 'Section Corner'

Depth: One inch below adjacent road surface

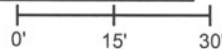
Indiana tie card references:

IN02_T18NR2E25_80

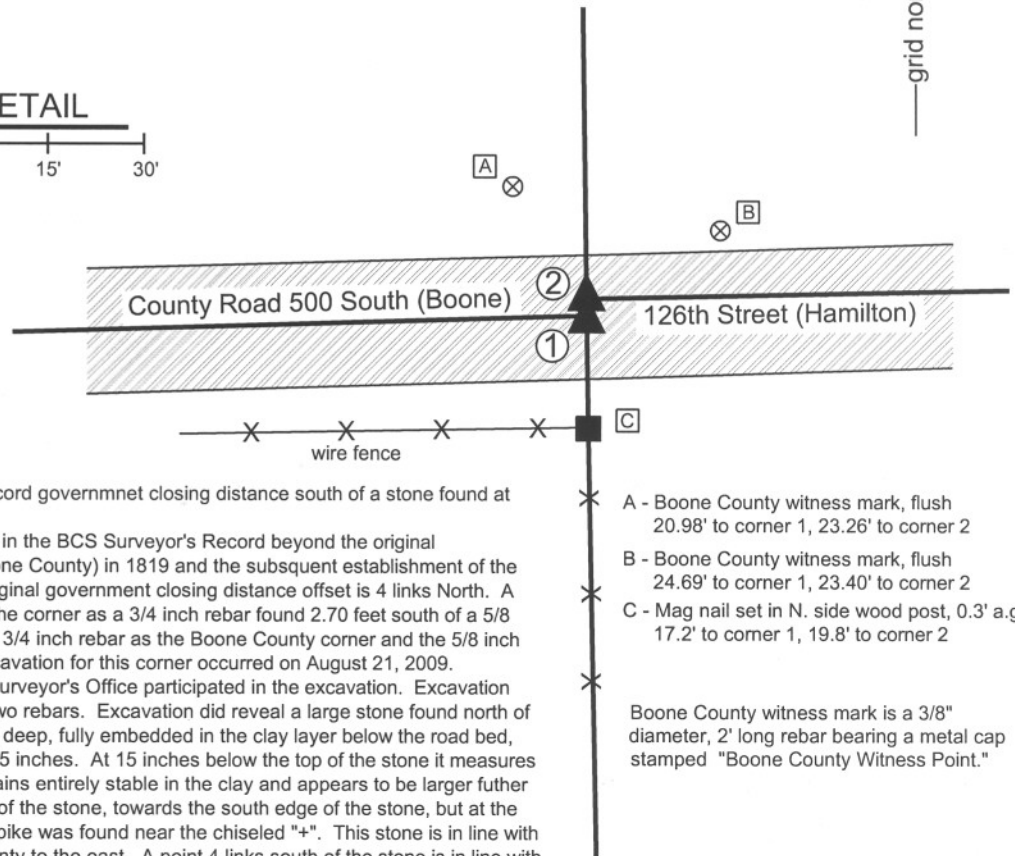
IN02_T18NR2E36_08

CORNER WITNESS DETAIL

SCALE 1" = 30'



- ① S.E. Corner, Section 25
N.E. Corner, Section 36
T 18 N, R 2 E (Boone County)
Harrison monument
- ② S.W. Corner, Section 30
N.W. Corner, Section 31
T 18 N, R 2 E (Hamilton County)
Mag spike monument
Distance between monuments:
2.64 feet (4 links)



- A - Boone County witness mark, flush 20.98' to corner 1, 23.26' to corner 2
- B - Boone County witness mark, flush 24.69' to corner 1, 23.40' to corner 2
- C - Mag nail set in N. side wood post, 0.3' a.g. 17.2' to corner 1, 19.8' to corner 2

Boone County witness mark is a 3/8" diameter, 2' long rebar bearing a metal cap stamped "Boone County Witness Point."

The harrison monument was set at the record government closing distance south of a stone found at the Hamilton County corner. This corner is not described or mentioned in the BCS Surveyor's Record beyond the original establishment of the standard corner (Boone County) in 1819 and the subsequent establishment of the closing corner (Hamilton County). The original government closing distance offset is 4 links North. A BCS tie card dated May 22, 1991 shows the corner as a 3/4 inch rebar found 2.70 feet south of a 5/8 inch rebar. Recent surveys have held the 3/4 inch rebar as the Boone County corner and the 5/8 inch rebar as the Hamilton County corner. Excavation for this corner occurred on August 21, 2009. Representatives of the Hamilton County Surveyor's Office participated in the excavation. Excavation revealed no specific evidence below the two rebars. Excavation did reveal a large stone found north of the northerly rebar. The stone is 4 inches deep, fully embedded in the clay layer below the road bed, sticking out of the clay by approximately 15 inches. At 15 inches below the top of the stone it measures 14 inches E-W by 15 inches N-S and remains entirely stable in the clay and appears to be larger futher down. A vague chiseled "+" is on the top of the stone, towards the south edge of the stone, but at the high point of the top. A 6 inch long boat spike was found near the chiseled "+". This stone is in line with the center of 126th street in Hamilton County to the east. A point 4 links south of the stone is in line with the center of County Road 500 South in Boone County to the west. It was agreed by the representatives of the two offices that this stone appears to monument the Hamilton County corner. No other stones were found in an area of excavation extended to 6 feet south of the stone and 2 feet to the east and 2 feet to the west. A Mag Spike was set over the etched "+" on the stone, per the Hamilton County Surveyor's Office. The location of the Boone County corner was computed at the record closing distance of 4 links (2.64 feet) and set on the range line extended south through the etched "+" on the stone. A harrison monument was set at the Boone County corner. The rebars, both removed during excavation, had been 2.0 feet north and 0.4 feet east of the respective corners. The Boone County corner was originally established as a wood post in 1819.



Kenneth E. Hedge
Kenneth E. Hedge, County Surveyor

James S. Swift
James S. Swift, IN LS 20200054
July 14, 2010

Eagle Township
Boone County

Clay Township
Hamilton Township

Section 25 T18N, R2E	Section 30 T18N, R3E
Section 36 T18N, R2E	Section 31 T18N, R3E

PHOTOGRAPHIC DOCUMENTATION

Date of photography: August 21, 2009

View of the stone as first exposed on 8/21/2009. The stone had been previously exposed on June 20, 2007.



The corner area prior to excavation on 8/21/2009. The stone is under the asphalt patch on the left, the painted hole in the road represents the corner previously thought to be the Hamilton County corner and the small hole to the right represents the previously held location of the Boone corner.



View from the west, looking across the stone and east along 126th Street.



The stone and area of excavation. View from above and south.



The stone from above and west.



For details and documentation, refer to related sheet "Section Corner Record."