

SECTION CORNER RECORD

BOONE COUNTY SURVEYOR'S OFFICE

SW 400-000

State Plane grid coordinates NAD83 (2011):

Corner 1: North: 1724387.67 East: 3124968.43 (U.S. survey feet)

Corner 2: North: 1724511.75 East: 3124967.30 (U.S. survey feet)

Type of monument: Harrison, 4" disk 'Section Corner'

Depth: Flush with adjacent ground

Indiana tie card references:

IN02_T18NR1W24_80 IN02_T18NR1E14_72

IN02_T18NR1W25_08 IN02_T18NR1E23_00

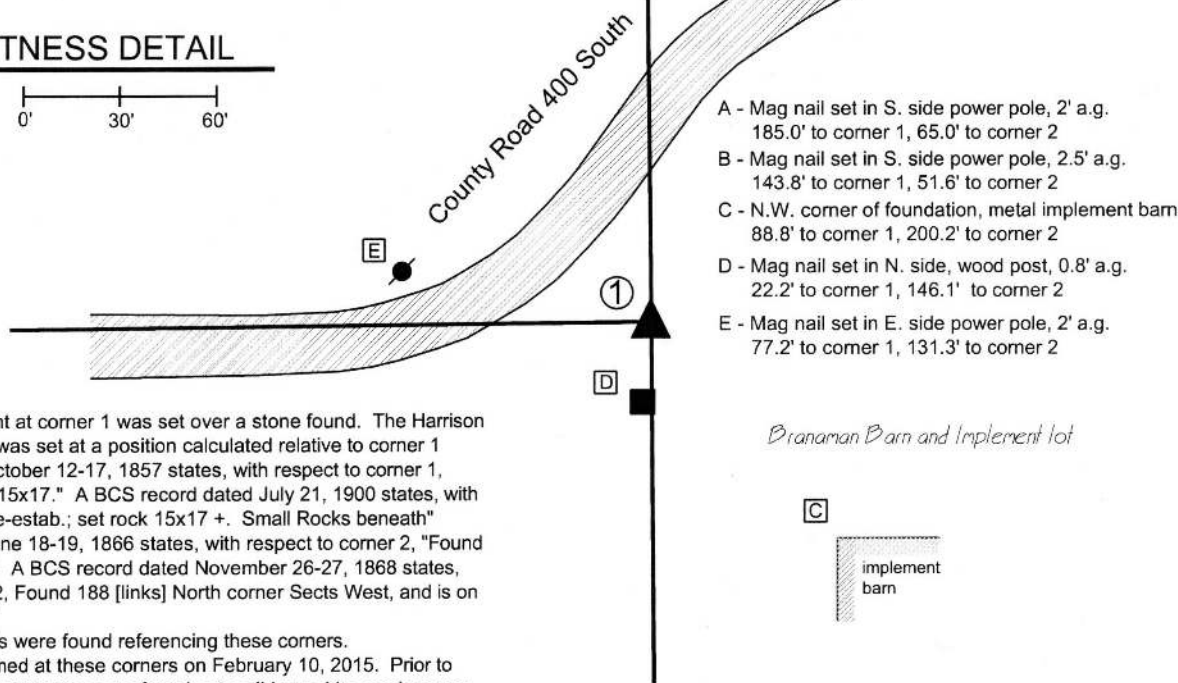
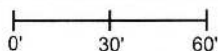
① S.E. Corner, Section 24
N.E. Corner, Section 25
T 18 N, R 1 W

② S.W. Corner, Section 19
N.W. Corner, Section 30
T 18N, R 1 E

Distance between monuments:
124.08' (188 links)

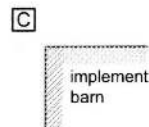
CORNER WITNESS DETAIL

SCALE 1" = 60'



- A - Mag nail set in S. side power pole, 2' a.g. 185.0' to corner 1, 65.0' to corner 2
- B - Mag nail set in S. side power pole, 2.5' a.g. 143.8' to corner 1, 51.6' to corner 2
- C - N.W. corner of foundation, metal implement barn 88.8' to corner 1, 200.2' to corner 2
- D - Mag nail set in N. side, wood post, 0.8' a.g. 22.2' to corner 1, 146.1' to corner 2
- E - Mag nail set in E. side power pole, 2' a.g. 77.2' to corner 1, 131.3' to corner 2

Branaman Barn and Implement lot



The Harrison monument at corner 1 was set over a stone found. The Harrison monument at corner 2 was set at a position calculated relative to corner 1. A BCS record dated October 12-17, 1857 states, with respect to corner 1, "Reestablished. Rock 15x17." A BCS record dated July 21, 1900 states, with respect to corner 1, "Re-estab.; set rock 15x17 +. Small Rocks beneath" A BCS record dated June 18-19, 1866 states, with respect to corner 2, "Found from Burr Oak (down)." A BCS record dated November 26-27, 1868 states, with respect to corner 2, Found 188 [links] North corner Sects West, and is on East side of a Hickory."

No recent BCS tie cards were found referencing these corners.

Excavation was performed at these corners on February 10, 2015. Prior to excavation, Harrison monuments were found ostensibly marking each corner. The two monuments were found to be located exactly 188 links (124.08 feet) apart from each other. The source of the monuments is not known, though it is likely that they were set by representatives of the former Anderson & Associates in approximately 2005. Excavation at corner 1 yielded a stone found at 8 inches deep. The stone matched the 15x17 inch dimensions called in the 1857 and 1900 record. As found, the stone was mostly vertical, though leaning slightly to the northwest. A piece of wire was found partially wrapped around the stone. The wire appeared to be serving a purpose of holding the stone in a vertical orientation, perhaps while the surrounding ground was refilled. The stone fit well with the evidence of the line to the west, in the form of the center of County Road 400 South, and was slightly east of the old end post to the south. No specific marks were found on the stone, though it is noted that the stone had a rough surface and marks are often difficult to detect on such rocks. A smaller rock (5x7x8) was found nearby, but not underneath the stone. A possible explanation for the fact that the smaller rock was not underneath the primary stone would be that at some point excavation activities in this area disturbed the ground. Perhaps the primary stone and smaller rocks were all removed and only the primary stone replaced. In the field, this possibility appeared to be supported by the curious piece of wire which appeared to have held the stone in a vertical orientation at some point. Excavation in the vicinity of corner 2 yielded no further evidence of that corner. The 188 link offset, being the original federal offset and confirmed by the BCS records, was held for the separation between the corners. Corner 2 was established on the range line, as defined by the stone at corner 1 and a wood post at or near to the the standard corner 1/2 mile north. A Harrison monument was set at this position.

Corner 1 was originally established as a wood post in 1819. Corner 2 was originally established as a wood post in 1820.

Kenneth E. Hedge
Kenneth E. Hedge, County Surveyor

James S. Swift
James S. Swift, IN LS 20200054
March 28, 2016



Harrison Township

Section 24 T18N, R1W	Section 19 T18N, R1E
Section 25 T18N, R1W	Section 30 T18N, R1E

SECTION CORNER RECORD

SW-400-100

BOONE COUNTY SURVEYOR'S OFFICE

State Plane grid coordinates NAD83 (2011):
North: 1724326.48 East: 3119633.20 (U.S. survey feet)

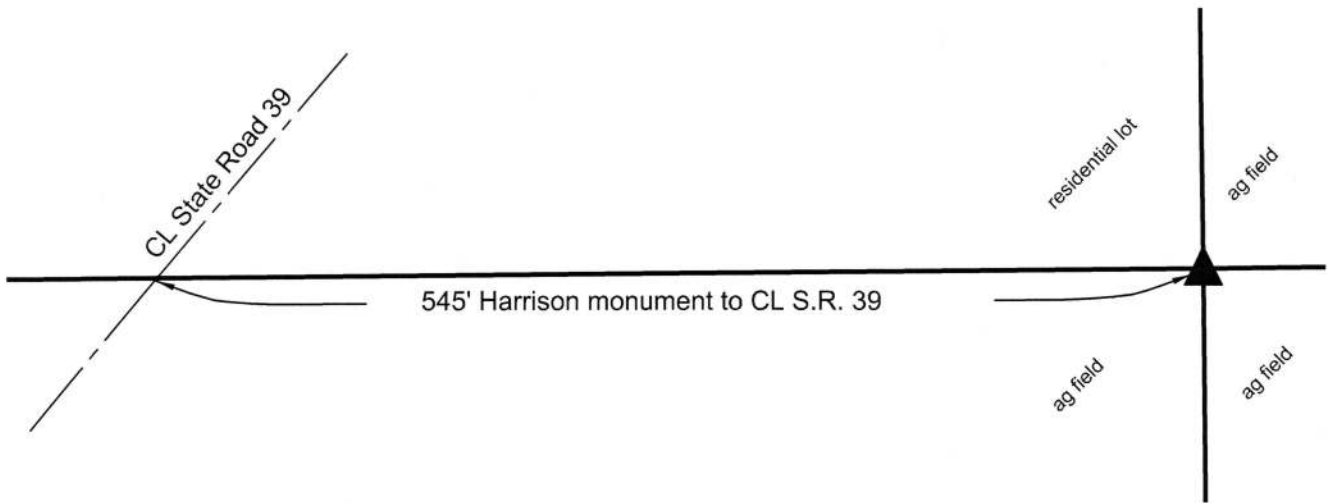
Type of monument: Harrison, 4" disk 'Section Corner'
Depth: One inch above adjacent ground

Indiana tie card references:
IN02_T18NR1W23_80 IN02_T18NR1W24_72
IN02_T18NR1W25_08 IN02_T18NR1W25_00



CORNER WITNESS DETAIL

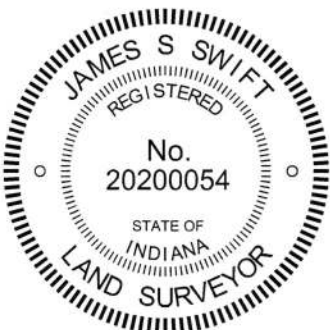
SCALE 1" = 100'



The Harrison monument was set in place of a collection of numerous small rocks found below grade. A BCS record dated October 12-16, 1857 states, with respect to this corner, "Reestablished. Rock 15x20." No recent BCS tie cards were found referencing this corner.

This office assisted Deckard Engineering/Surveying with section corner perpetuation in this vicinity during November, 2015. The corner 1/2 mile south of the subject corner (SW 150-400) was excavated and monumented by this office at that time. The subject corner was excavated by Deckard in the same time period. Calculating the position relative to proximate corners and relevant deed descriptions and evidence, the Deckard crew found substantial evidence of the corner in the form of a grouping of numerous small rocks and held the position of the corner. That position for the corner was confirmed by this office. The position of the corner held by Deckard works well with proximate corners and local evidence in the form of the east-west field division and remnants of fence to the east and west as well as evidence of occupation and remnants of fence to the north. A Harrison monument was set at that position on October 13, 2016. The Deckard survey is recorded as Instrument 201600002449 in the Office of the Boone County Recorder.

This corner was originally established as a wood post in June, 1820.



Kenneth E. Hedge, County Surveyor

James S. Swift, IN LS 20200054
March 23, 2017

Harrison Township

Section 23 T18, R1W	Section 24 T18N, R1W
Section 26 T18N, R1W	Section 25 T18N, R1W

SECTION CORNER RECORD

SW 450-100

BOONE COUNTY SURVEYOR'S OFFICE

State Plane grid coordinates NAD83 (2011):

North: 1721688.87 East: 3119661.48 (U.S. survey feet)

Type of monument: Harrison, 4" disk 'Section Corner'

Depth: One inch below adjacent road surface

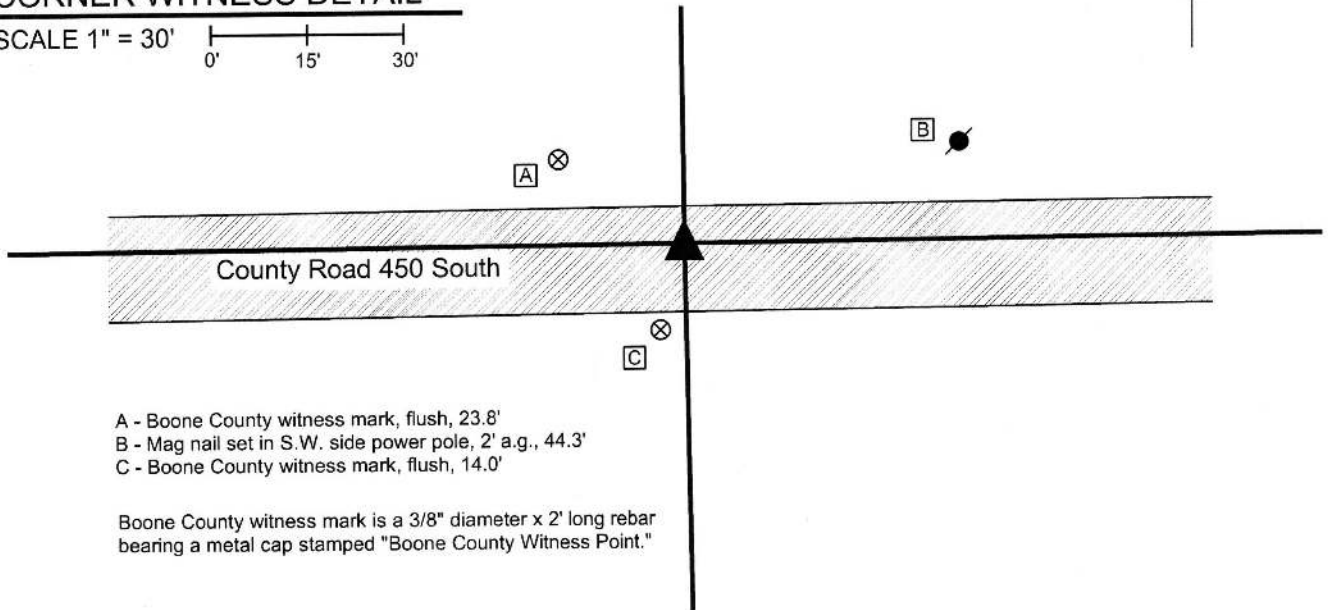
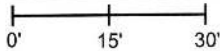
Indiana tie card references:

IN02_T18NR1W26_44 IN02_T18NR1W25_36



CORNER WITNESS DETAIL

SCALE 1" = 30'



- A - Boone County witness mark, flush, 23.8'
- B - Mag nail set in S.W. side power pole, 2' a.g., 44.3'
- C - Boone County witness mark, flush, 14.0'

Boone County witness mark is a 3/8" diameter x 2' long rebar bearing a metal cap stamped "Boone County Witness Point."

The Harrison monument was set over a stone found.

A BCS record dated October 12-16, 1857 states, with respect to this corner, "Reestablished. Rock 12x22." The same record also calls for a stone set at the center of section 25. A subsequent record, dated April 30, 1895, established a position for a title corner (termed "10") which is 4 chains to the east of the subject corner.

A BCS record dated May 5, 1992 shows the corner as a railroad spike found.

This corner was excavated on November 25, 2015. Prior to excavation, a railroad spike was found in the center of County Road 450 South. The spike was accepted as most likely representing the monument shown on the 1992 tie card, though no ties remain to prove this. At the corner, no evidence of occupation was present to help define the North-South section lines. However, an ancient wood post and associated field division were found providing evidence of the title corner "10." Analysis of the relative positions of the railroad spike with evidence of surrounding lines and corners clearly indicated that the spike was situated too far east to actually mark the corner. A probable position for the subject corner was computed with respect to this evidence and excavation was centered on this probable position. Excavation revealed the stone described in the 1857 record at a point 2.9 feet north and 6.5 feet west of the railroad spike. The stone was found at 14 inches deep. It was vertical with a distinct high point. With 14 inches of the top of the stone exposed, the stone measured 12 inches E-W by 5 inches N-S and remained entirely stable. Probing on the south side of the stone indicated that it was approximately the record height of 22 inches. The stone was embedded in the clay layer below the road bed, with the top of the rock protruding into the bottom of the road bed by 2 inches, more or less. The stone was accepted as being the same monument called for in the 1857 record and was held as marking the corner. The stone was left in place and a Harrison monument was set over the top, high point of the rock. The railroad spike was not situated within the original area of excavation, hence was not removed. The position of the wood post providing evidence of corner "10" fit well with the position of the stone. This corner was originally established as a wood post in 1820.

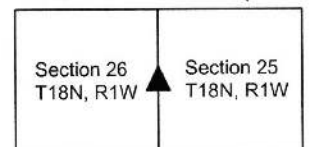


Kenneth E. Hedge, County Surveyor

James S. Swift, IN LS 20200054

March 28, 2016

Harrison Township



SECTION CORNER RECORD

SW 500-100

BOONE COUNTY SURVEYOR'S OFFICE

State Plane grid coordinates NAD83 (2011):

North: 1719043.73 East: 3119704.75 (U.S. survey feet)

Type of monument: Harrison, 4" disk 'Section Corner'

Depth: Six inches below adjacent gravel road surface

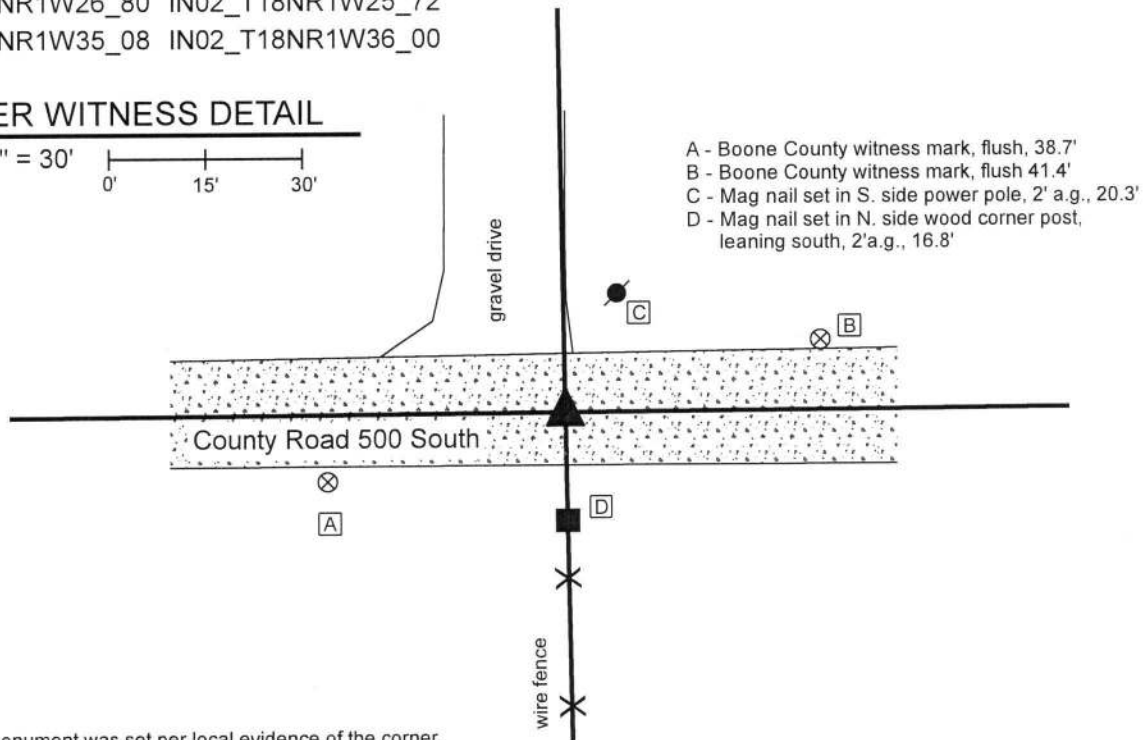
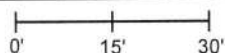
Indiana tie card references:

IN02_T18NR1W26_80 IN02_T18NR1W25_72

IN02_T18NR1W35_08 IN02_T18NR1W36_00

CORNER WITNESS DETAIL

SCALE 1" = 30'

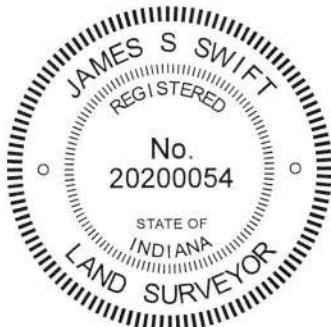


The Harrison monument was set per local evidence of the corner.

A BCS record dated September 8-12, 1837 (date noted in book as more likely to be 1857) states, with respect to this corner, "Reestablished. Set Rock 10x14." No recent BCS tie cards were found referencing this corner. A survey by Ronald E. Wharry, LS #S0420 recorded as Instrument 2017007960 in the Office of the Boone County Recorder shows the corner as being 18.00 feet north of a headpost on the south side of County Road 500 South but shows no monument set or found at the corner.

This corner was excavated on April 22, 2019. Prior to excavation, no metal or other artificial monuments were found marking the corner. The estimated position of the corner was established per the evidence of the physical roadway of County Road 500 South and an ancient fence bearing south from said County Road. The intersection point of the road and fence fits well with the relative positions of surrounding corners and evidence. Excavation was centered on a point 1 rod (16.5 feet) north of the ancient wood end post which marks the northerly terminus of said north-south fence. Excavation of an area extending 5 feet east, 5 feet west, 3.5 feet north and 3.5 feet south of the estimated position of the corner revealed no further evidence of the corner. The road bed consists of 4 inches of a bituminous material below which is 4 inches of modern #53 road stone, below which is another 4 inches of older gravel. The presence of the modern road stone indicates substantial grading / road improvement in the recent past. The descriptions for the adjacent properties are in the form of aliquot parts descriptions. Hence, the physical evidence of the roadway and fence were held as controlling for establishing the corner. It has been observed at numerous other corners throughout the county that the most reliable dimension for using accessory evidence such as an end post on the side of a road to discover ancient evidence of a corner is that of 1 rod or 16.5 feet. This dimension was held for purposes of establishing this corner. The corner was established at 1 rod north of the base of the post at the point where the post is flush with ground level and a Harrison monument was set at this position. This position fit very well with approximate center of the physical roadway. Up to 1.5 feet of uncertainty north-south is associated unmonumented position shown on the Wharry Survey.

This corner was originally established as a wood post in 1820.



Kenneth E. Hedge
Kenneth E. Hedge, County Surveyor

James S. Swift
James S. Swift, IN LS 20200054
May 22, 2019

Harrison Township

Section 26 T18N, R1W	Section 25 T18N, R1W
Section 35 T18N, R1W	Section 36 T18N, R1W