

SECTION CORNER RECORD

SE 400-500

BOONE COUNTY SURVEYOR'S OFFICE

State Plane grid coordinates NAD83 (NSRS 2007):

North: 1725066.53 East: 3151280.00 (U.S. survey feet)

Type of monument: Harrison, 4" disk 'Section Corner'

Depth: One inch below adjacent road surface

Indiana tie card references:

IN02_T18NR1E23_80 IN02_T18NR1E24_72

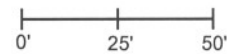
IN02_T18NR1E25_00 IN02_T18NR1E26_08

The harrison monument was set in the computed position of a rebar and in the immediate vicinity of a disturbed stone found.

A BCS record of June 17, 1882 states "Reestablished from stumps Set Rock 13,9,5 1/2 +." A BCS tie card dated June 10, 1991 shows the corner as a "1 inch rebar found 0.3' below surface in line w/ W. fence." Although this significant construction has occurred recently in the vicinity of this corner as part of the Anson development and more specifically the construction of County Road 400 South, preliminary excavation on July 23, 2009 indicated that the old road bed was not entirely removed below this corner and the possibility that the record stone was in place merited further excavation. Full excavation occurred on July 28, 2009. Prior to excavation the position for the rebar shown on the 1991 record had been computed by means of the relative positions of other monuments shown on preliminary surveys to the Anson development by American Consulting Engineers. Please refer to the record for the quarter corner to the west, SE-400-450, for details about the computation of the position of corners shown on surveys of the Anson development. Excavation revealed the cross section of the road in this area is 5 inches of new asphalt over 5 inches of modern #53 road stone, under which approximately 8 inches of the base of the old road bed still exists. The rebar was not found and was apparently removed during construction. The record stone was found at the bottom of the road bed. As originally found, the stone was at a depth of approximately 19 inches, and measured 13 inches N-S by 5 1/2 inches E-W by 9 inches tall. A clear and distinct "+" was visible at the north end of the stone. It appeared that the stone was lying on its side and had been knocked over from the south. During the excavation of other corners, it has been observed that in the latter half of the 1800s field crews from this office appear to have generally followed the procedure of setting a single stone, or the top stone if multiple stones were set, in a vertical orientation with the etched "+" either on top, or if on the side, generally noted as such. Almost every stone found from that era is also noted to be at the bottom of the old road bed or, most often, protruding 2 to 4 inches out of the clay layer and into the road bed. Comparing the orientation of this stone with that of previous, similar stones found, this stone most definitely appeared to be lying on its side. The observation of a break in the stone on the edge which would have been the south edge prior to being knocked over, is accepted as further evidence of the likelihood that the stone was hit on the south side by a piece of machinery and pushed over towards the north. Standing the stone up, as it may have been prior to being knocked over, the etched "+" is on the top and the top of the stone is at 15 inches deep, which would have put the stone protruding approximately 3 inches out of the clay layer and into the bottom of the road bed, and the stone is situated with a wide base at the bottom, tapering slightly towards the top. When stood up, the stone was approximately 8 inches north of the computed position for the rebar. Although it was apparent that the stone had been knocked over from the south, it was not clear whether its overall position had been compromised. It is entirely possible that the stone was pushed to the north as it was being knocked over, which indicates that the position of the rebar may be just as valid as the position of the stone as originally found. Given the clear disturbance of the stone, the immediate proximity of the position of the rebar to the stone, and the acceptance of the rebar for previous surveys, including the Anson Surveys and the 1991 tie card, the position of the rebar was held as marking the corner. The stone was removed and the harrison monument was set at the computed position of the rebar. This corner was originally established as a wood post in June, 1820.

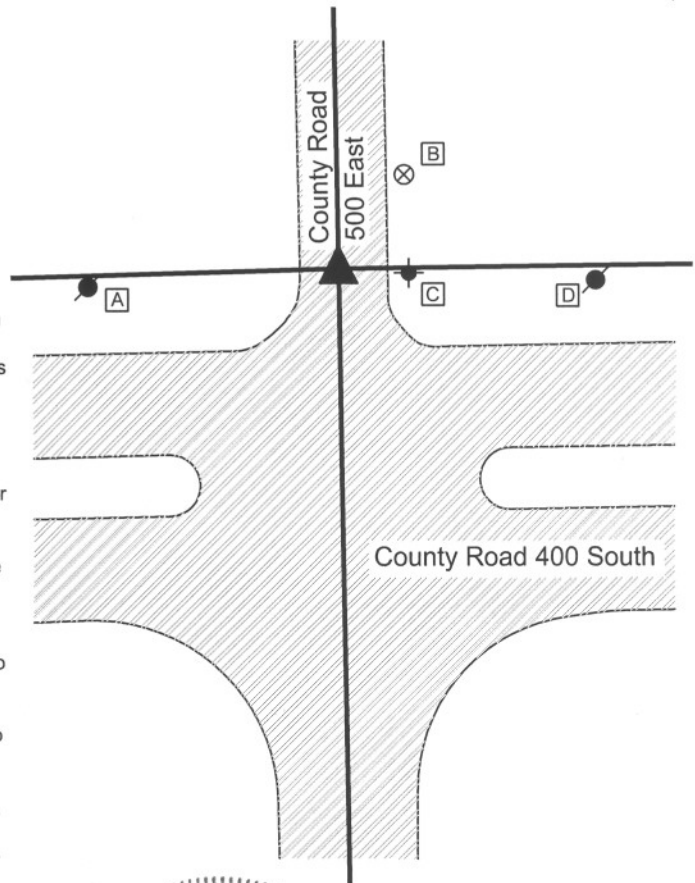
CORNER WITNESS DETAIL

SCALE 1" = 50'



- A - Boone County witness mark, flush, 29.87'
- B - Mag nail set in E. side power pole, 2.0' a.g., 63.0'
- C - Fire hydrant, N.W. base bolt, 17.30'
- D - Mag nail set in N.W. side power pole, 65.4'

Boone County witness mark is a 3/8" diameter x 2' long rebar bearing a metal cap stamped "Boone County Witness Point."



Worth Township

| | |
|-------------------------|-------------------------|
| Section 23 T18N, R1E | Section 24 T18N, R1E |
| Section 26 T18N, R1E | Section 25 T18N, R1E |

Kenneth E. Hedge
Kenneth E. Hedge, County Surveyor

James S. Swift
James S. Swift, IN LS 20200054

July 14, 2010

PHOTOGRAPHIC DOCUMENTATION

Date of photography: July 28, 2009

View of the stone as first exposed.



The stone removed from the road bed and situated in the orientation at which it was found.



The stone stood up in the orientation at which it was most likely originally set, with the etched mark on top. View from the east, looking west along the section line and north line of C.R. 400 South.



For details and documentation, refer to related sheet "Section Corner Record."

SECTION CORNER RECORD

BOONE COUNTY SURVEYOR'S OFFICE

SE 400-550

State Plane grid coordinates NAD83 (NSRS 2007):

North: 1725096.98 East: 3153947.85 (U.S. survey feet)

Type of monument: Harrison, 4" disk 'Section Corner' in concrete pillar

Depth: 2 inches above adjoining grade

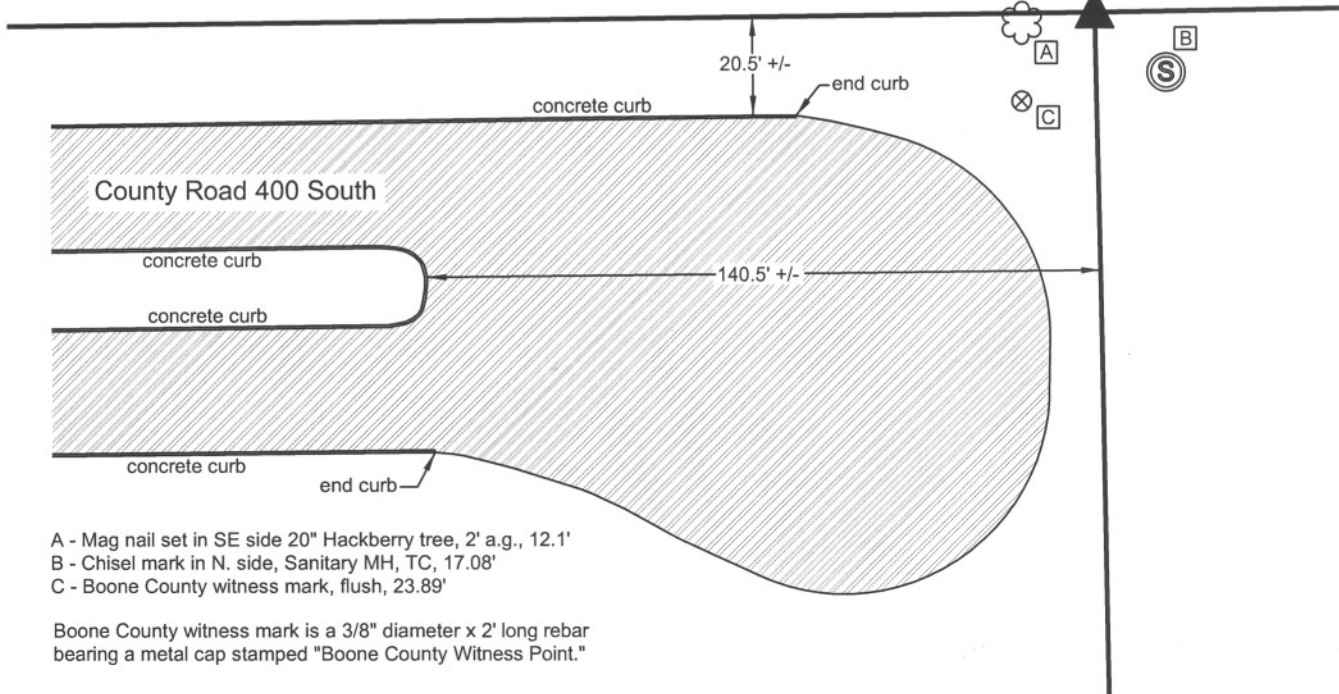
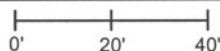
Indiana tie card references:

IN02_T18NR1E24_76

IN02_T187NR1E25_04

CORNER WITNESS DETAIL

SCALE 1" = 40'



- A - Mag nail set in SE side 20" Hackberry tree, 2' a.g., 12.1'
- B - Chisel mark in N. side, Sanitary MH, TC, 17.08'
- C - Boone County witness mark, flush, 23.89'

Boone County witness mark is a 3/8" diameter x 2' long rebar bearing a metal cap stamped "Boone County Witness Point."

The harrison monument was set in place of a rebar found.

A BCS record of June 17, 1872 states "Reestablished from stump of Beech. Set a Rock 25,12,7 +." No BCS tie cards were found for this corner. This corner was excavated on November 7 and 12, 2008. Prior to excavation, a 5/8 inch rebar bearing a yellow plastic cap stamped "Dodge" was found. A wide area was probed and investigated but the record stone was not found. Numerous small rocks were found, none of which appeared to be evidence of the corner. It is noted that recent construction associated with the development of County Road 400 South has disturbed the area, though not apparently the immediate vicinity of the rebar. A new manhole is located approximately 17 feet southeast of the rebar. No fence remains along the section line, though the previous location of the fence is evident on the ground. It appears that the recent construction extended up to but not beyond the old fence line. The rebar has been held by numerous surveys, including surveys for the Anson Development recorded in Survey Book 8, pages 23 and 24 among others. The rebar also fits well with the approximate corners to the east and west, and falls along the earthen hump which provides evidence of the old east-west fence line. The rebar was accepted as the best available evidence of the corner and the harrison monument was set in its place. This corner was originally established as a wood post in June, 1820.

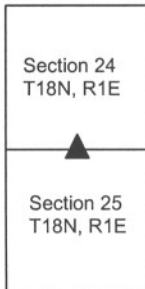


Kenneth E. Hedge
 Kenneth E. Hedge, County Surveyor

James S. Swift
 James S. Swift, IN LS 20200054

March 11, 2009 Revised July 14, 2010

Worth Twp



SECTION CORNER RECORD

SE 400-600

BOONE COUNTY SURVEYOR'S OFFICE

State Plane grid coordinates NAD83 (2011):
 North: 1725133.92 East: 3156616.92 (U.S. survey feet)

Type of monument: Iron plug in concrete, flush

CORNER WITNESS DETAIL

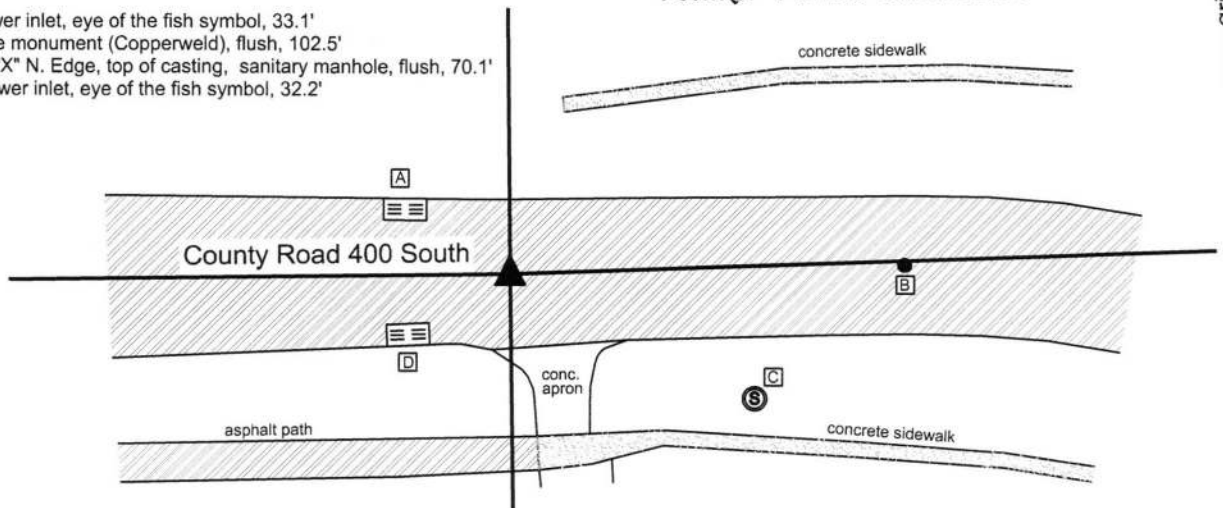
SCALE 1" = 50'
 0' 25' 50'

Indiana tie card references:

IN02_T18NR1E24_80 IN02_T18NR1E25_08
 IN02_T18NR2E19_72 IN02_T18NR2E30_00

- A - Storm sewer inlet, eye of the fish symbol, 33.1'
- B - Center line monument (Copperweld), flush, 102.5'
- C - Chiseled "X" N. Edge, top of casting, sanitary manhole, flush, 70.1'
- D - Storm sewer inlet, eye of the fish symbol, 32.2'

Walker Farms Subdivision



This corner was previously documented by this office on July 14, 2010. Since that date, the Harrison monument at the corner was removed during road construction and replaced with an iron pin in concrete.

The 2010 documentation is as follows:

The Harrison monument was set in place of a Harrison monument found.

A BCS record of July 8, 1881 states "Established by running line from E to F in Sect 19....Set Rock 10,8,6 marked +." A BCS tie card dated May 11, 1970 states "No stone, Set Rail." This tie card references the corner as being the northeast corner of section 25, township 18 north, range 1 east. The card shows this corner as being situated in the center of County Road 400 South and also shows an apparent corner one rod (16.5 feet) north and states "Stone for NW corner of Sec 30 T18N R2E?" The question mark shown in the quote is per the tie card. The field crew evidently found a rock one rod north of the center of the road and concluded that the standard corner fell in the road and the closing corner fell to the north, monumented by the rock. However, the original federal surveyors did not establish two corners at this point. The transcribed government field notes for the closing corner state "West Between Secs 19 & 30 82.88 Intersected West line at post...." Hence, the reference in the 1970 tie card to the closing corner being one rod north of the standard corner is erroneous, as was perhaps known at the time, as evidenced by the question mark. Analysis of the geometry of the proximate lines and corners of the Public Land Survey System in this area yields ample evidence that this corner should fall within County Road 400 South rather than north of it. This corner was excavated on July 29, 2009. Prior to excavation a Harrison monument was found in the approximate center of County Road 400 South at a position which fits that shown for the railroad rail on the 1970 tie card with respect to the center of the road, the fence to the north and the fence to the south 49.5 feet east. No documentation was found for the source of the Harrison. Excavation revealed no further evidence below or in the vicinity of the Harrison. The area of excavation was 12 feet N-S by 12 feet E-W, centered on the Harrison. Based on the references shown on the 1970 tie card, the rail would have definitely fallen within this area of excavation. The road bed in this area is very shallow, being only 6 to 9 inches of gravel, below which is the clay layer. If the record stone had been set in a similar manner to many other stones found from the same era, it would have been embedded in the clay, protruding 2 to 4 inches into the bottom of the road, putting it well within the range of the blade or teeth of a road grader. The fact that the rail is not present indicates that it was probably hit by a road grader and removed. As the Harrison monument was the only physical evidence found and it fits the references on the 1970 tie card, it was held as marking the corner. A new Harrison monument was set in its place approximately 8 inches below grade. The stone shown on the 1970 tie card was not found and was likely removed during the installation of an electric transformer box servicing the Walker Farms development to the north and east. It is noted that the preliminary survey to the Walker Farms development, Survey Book 4, page 67, holds the stone for the S.W. corner of section 19, stating "stone found per Co. Surveyor's ties." As noted above, this stone is not considered the corner. The reference to the tie card does not note the question mark attached to this reference. It is noted that this survey does hold County Road 400 South, extended east to the intersection with County Road 650 East, as the south quarter corner. It is also noted that the stone at the west quarter corner of section 19 was found at the midpoint of the line between the northwest corner, in County Road 300 South and southwest corner, in County Road 400 South. Please refer to the record for corner SE-350-600 for discussion of this stone.



Kenneth E. Hedge
 Kenneth E. Hedge, County Surveyor

James S. Swift
 James S. Swift, IN LS 20200054

July 14, 2010 - revised March 23, 2016

Worth Township

| | |
|-------------------------|-------------------------|
| Section 24 T18N, R1E | Section 19 T18N, R2E |
| Section 25 T18N, R1E | Section 30 T18N, R2E |

SECTION CORNER RECORD

SE 450-500

BOONE COUNTY SURVEYOR'S OFFICE

State Plane grid coordinates NAD83 (NSRS 2007):

North: 1722411.46 East: 3151322.51 (U.S. survey feet)

Type of monument: Harrison, 4" disk 'Section Corner'

Depth: One inch below adjacent road surface

Indiana tie card references:

IN02_T18NR1E25_36

IN02_T18NR1E26_44

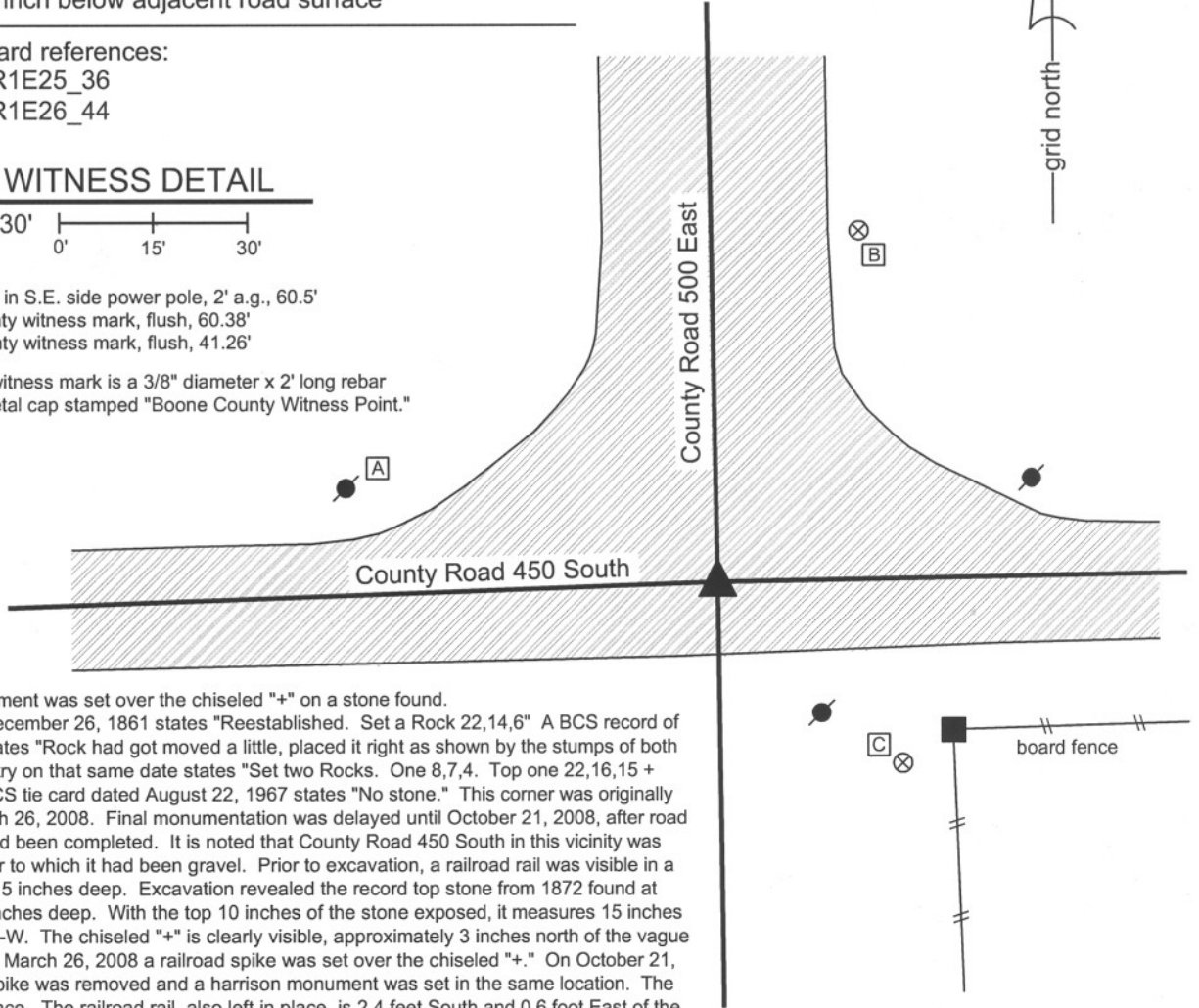
CORNER WITNESS DETAIL

SCALE 1" = 30'




- A - Mag nail set in S.E. side power pole, 2' a.g., 60.5'
- B - Boone County witness mark, flush, 60.38'
- C - Boone County witness mark, flush, 41.26'

Boone County witness mark is a 3/8" diameter x 2' long rebar bearing a metal cap stamped "Boone County Witness Point."



The harrison monument was set over the chiseled "+" on a stone found. A BCS record of December 26, 1861 states "Reestablished. Set a Rock 22,14,6" A BCS record of October 3, 1872 states "Rock had got moved a little, placed it right as shown by the stumps of both trees." Another entry on that same date states "Set two Rocks. One 8,7,4. Top one 22,16,15 + (see above)." A BCS tie card dated August 22, 1967 states "No stone." This corner was originally excavated on March 26, 2008. Final monumentation was delayed until October 21, 2008, after road work in the area had been completed. It is noted that County Road 450 South in this vicinity was paved in 2007, prior to which it had been gravel. Prior to excavation, a railroad rail was visible in a hole in the asphalt, 5 inches deep. Excavation revealed the record top stone from 1872 found at approximately 10 inches deep. With the top 10 inches of the stone exposed, it measures 15 inches N-S by 16 inches E-W. The chiseled "+" is clearly visible, approximately 3 inches north of the vague top, high point. On March 26, 2008 a railroad spike was set over the chiseled "+." On October 21, 2008 the railroad spike was removed and a harrison monument was set in the same location. The stone was left in place. The railroad rail, also left in place, is 2.4 feet South and 0.6 foot East of the chiseled "+" and harrison. The 1967 record does not mention the rail, though it is likely that it was set at the time of the creation of that tie card. The statement "no stone" on that card is clearly erroneous, as the stone was present, less than 1 foot deep in gravel at the approximate center of the intersection. It is not known why the 1872 record seems to refer to placing the stone right and also refers to setting new rocks with different dimensions. It is clear that the stone found is the record stone described in the second entry of the October 3, 1872 record. It is also noted that this position was established that day by the "stumps of both trees." The original corner was set as a wood post on June 9, 1820, with references to a 24 inch diameter hickory tree and an 18 inch diameter hickory tree. The stone is considered the best available evidence of the original location of the corner.

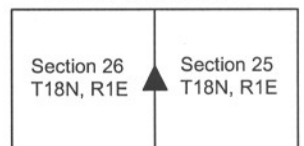

 Kenneth E. Hedge, County Surveyor


 James S. Swift, IN LS 20200054

March 11, 2009



Worth Township



PHOTOGRAPHIC DOCUMENTATION

Date of photography: March 17 & December 17, 2008

Corner stone and railroad rail. The rail is 2.5' S.S.E. of the "+" on the stone.



Corner stone and railroad rail from north. The chaining pin is on the rail.



Corner stone - overhead view from the north. The "+" is on the north side of the stone, approximately 3" down from the top of the stone.



Same view as to the left with the etched "+" enhanced for ease of visual detection.



SECTION CORNER RECORD

SE 450-600

BOONE COUNTY SURVEYOR'S OFFICE

CORNER 1 ONLY:

State Plane grid coordinates NAD83 (NSRS 2007):

North: 1722499.96 East: 3156657.01 (U.S. survey feet)

Type of monument: 30 inch length of 5/8 inch diameter rebar with metal cap stamped "Boone County Surveyor"

Depth: 18 inches below adjacent cultivated field

Indiana tie card references:

IN02_T18NR1E25_44

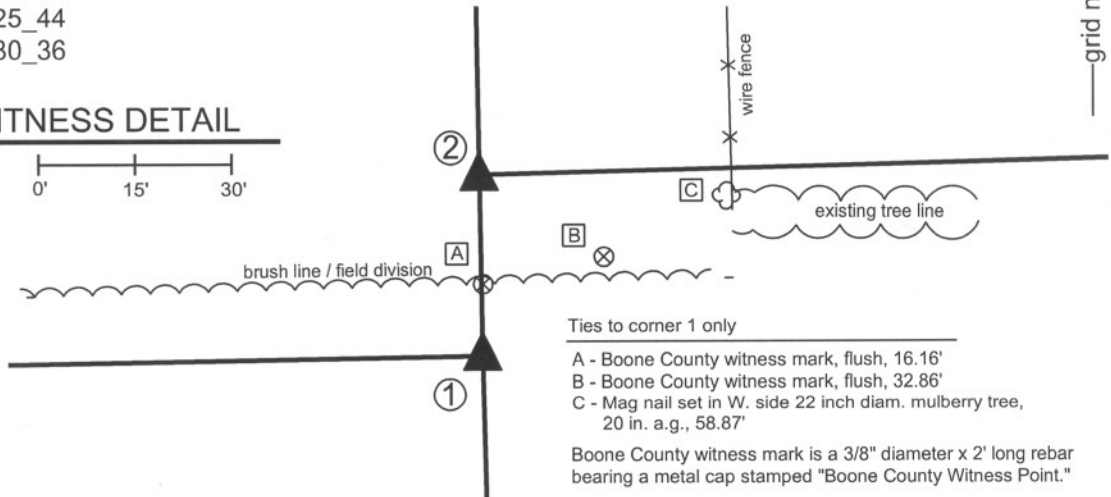
IN02_T18NR2E30_36

- ① E. 1/4 corner
Section 25
T 18 N, R 1 E
Rebar, 18" below grade
- ② W. 1/4 corner
Section 30
T 18 N, R 2 E
Corner position not firmly established



CORNER WITNESS DETAIL

SCALE 1" = 40'

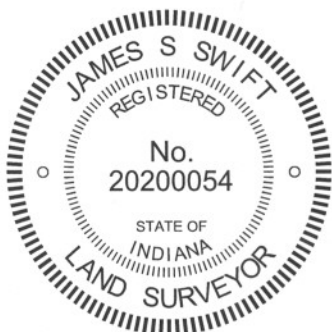


The capped rebar was set in place of a harrison monument found.

No specific descriptions of corner 1 were found beyond the original establishment of the corner as a wood post in June, 1821. It is shown, however, as the terminal point for measurements in records of 1841 and 1853. A BCS tie card dated November 28, 2005 shows the corner as a harrison monument with no documentation of source. Private surveys, including those by American Consulting Engineers which are preliminary surveys for the Anson Development show the corner as a rebar found. Please see Instrument 20060009189 in the Boone County Recorder's Office, among others.

The harrison monument, as found, was slightly disturbed, having apparently been set loosely in the dirt a few inches below a tilled field. Its position fit the the position of the rebar shown on private surveys and is believed to have been set in place of the rebar. The point falls well south of a brush line and field division and well west of the fence to the north. The position of the found harrison (and former rebar) was tested with respect to the center quarter corner of section 25 and the 1/16th corner between the center quarter and subject corner (east quarter corner). The A.C.E. surveys shown the center quarter corner as a stone found. A rebar with a metal cap stamped American Consulting Engrs, Inpls, was held as marking the corner and is believed to be over the found stone. The 1/16th corner at the intersection of County Road 450 South and 575 East was excavated and a stone was found marking the corner. The BCS record of October 19, 1853 shows the distance between the center quarter corner and the east quarter corner as being 81.12-1/2 half-chains and the distance between the 1/16th corner and the east quarter corner as being 40.31-1/2 half chains, leaving 40.81 half-chains between the center quarter corner and the 1/16th corner. Extending the line from the rebar over stone at the center quarter corner through the stone at the 1/16th corner by the same distance proportions documented in the 1853 record, a calculated position for the subject corner falls 1.4 feet east and 1.6 feet south of the found harrison monument. This variation is considered reasonable with respect to the 1853 dimensions and techniques. While the source of the rebar formerly marking the corner is not known, it was at a reasonable position with respect to other monuments and the relevant record dimensions, and did represent available, physical evidence of the corner. The found harrison monument was held as marking the corner. The corner is approximately 52 feet west of the fence to the north, which is explained by the fact that the farm in section 25 also owns 3 rods (49.5 feet) off of the west side of the northwest quarter of section 30. The unstable harrison monument was replaced with a 30 inch length of 5/8 inch diameter rebar driven to 18 inches below the surface of the cultivated field and capped with a metal cap stamped Boone County Surveyor's Office.

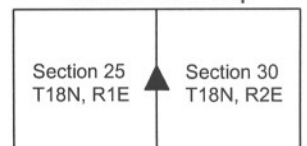
The specific position of the west quarter corner of section 30 (corner 2) was not determined as of publication of this tie card. The position graphically demonstrated on the sketch is at the average of the closing offset distances at the northwest and southwest corners of section 30, being 57.5 links or 37.95 feet from the east quarter corner of section 25. This position falls well north of the existing tree line / occupation line. Additional research is required to determine the specific location of corner 2 and the graphical representation of the corner on this document should not be construed as confirmation of the location of that corner. Corner 1 was originally established as a wood post in 1819. Corner 2 is not an original federal corner and is first documented in the BCS Surveyor's Record in 1835, though minimal information is given in that entry and the monument set at that time, if any, is not documented.



Kenneth E. Hedge
Kenneth E. Hedge, County Surveyor

James S. Swift
James S. Swift, IN LS 20200054
March 30, 2012

Worth Township



SECTION CORNER RECORD

SE 500-500

BOONE COUNTY SURVEYOR'S OFFICE

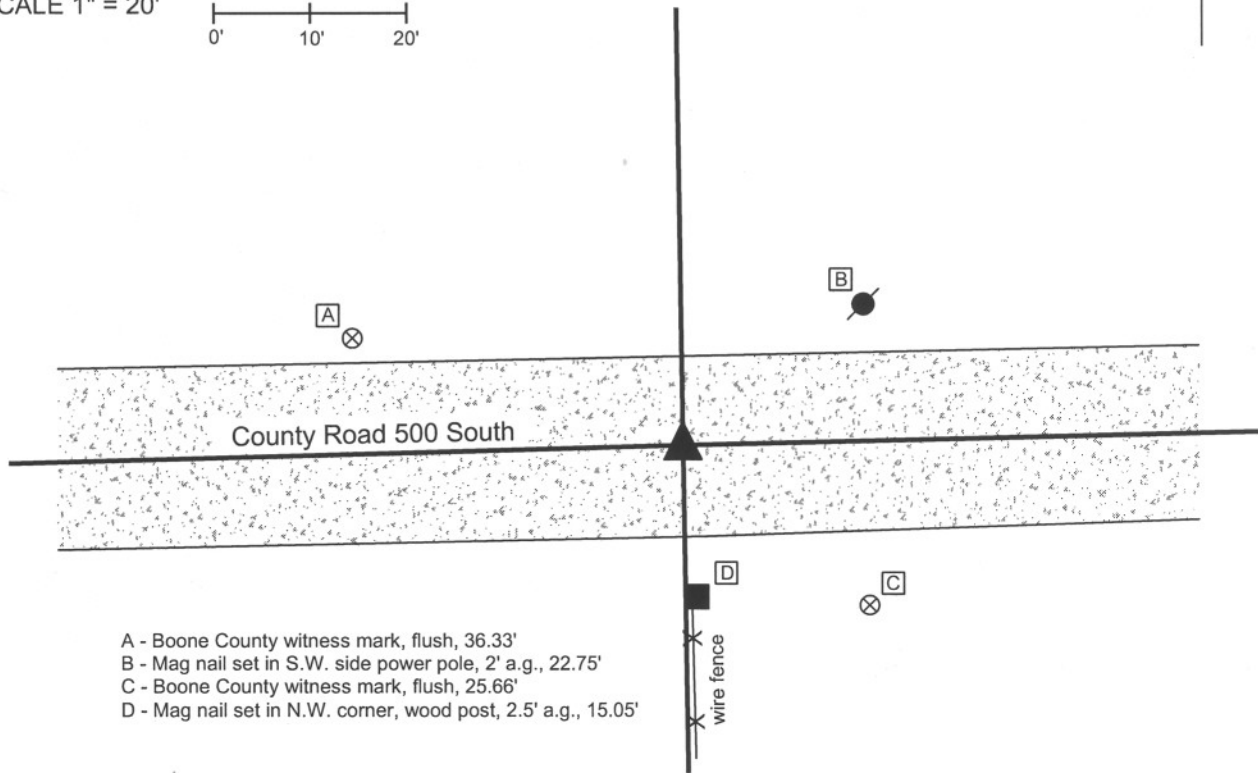
State Plane grid coordinates NAD83 (NSRS 2007):
North: 1719749.71 East: 3151359.26 (U.S. survey feet)

Type of monument: Harrison, 4" disk 'Section Corner'
Depth: Four inches below adjacent gravel road surface

Indiana tie card references:
IN02_T18NR1E25_72 IN02_T18NR1E26_80
IN02_T18NR1E35_08 IN02_T18NR1E36_00

CORNER WITNESS DETAIL

SCALE 1" = 20'



- A - Boone County witness mark, flush, 36.33'
- B - Mag nail set in S.W. side power pole, 2' a.g., 22.75'
- C - Boone County witness mark, flush, 25.66'
- D - Mag nail set in N.W. corner, wood post, 2.5' a.g., 15.05'



The harrison monument was set in place of a railroad rail found.
 A BCS record of 12/26/1861 states "found from stump of tree." A BCS record of 7/23/1868 states "re-established. Set a rock, 18,14,7 marked + on top." BCS tie cards dated June 10, 1991 and November 3, 2005 call for a railroad rail. No source record for the railroad rail was found.
 Prior to excavation the railroad rail was situated 6 inches below grade in the approximate center of County Road 500 South, north and slightly west of the end post of a well established fence to the south. An area seven feet E-W by seven feet N-S, centered on the rail, was excavated into the clay (approximately 24 inches deep) on March 31, 2008. Neither the record stone nor any other monument was found. The rail was replaced with a harrison monument set in concrete.
 This corner was originally established as a wood post in June 1820.



Kenneth E. Hedge
 Kenneth E. Hedge, County Surveyor

Perry Township

James S. Swift
 James S. Swift, IN LS 20200054

Worth Township

March 11, 2009

| | |
|-------------------------|-------------------------|
| Section 26 T18N, R1E | Section 25 T18N, R1E |
| Section 35 T18N, R1E | Section 36 T18N, R1E |

SECTION CORNER RECORD

BOONE COUNTY SURVEYOR'S OFFICE

SE 500-550

State Plane grid coordinates NAD83 (NSRS 2007):
 North: 1719807.08 East: 3154043.38 (U.S. survey feet)

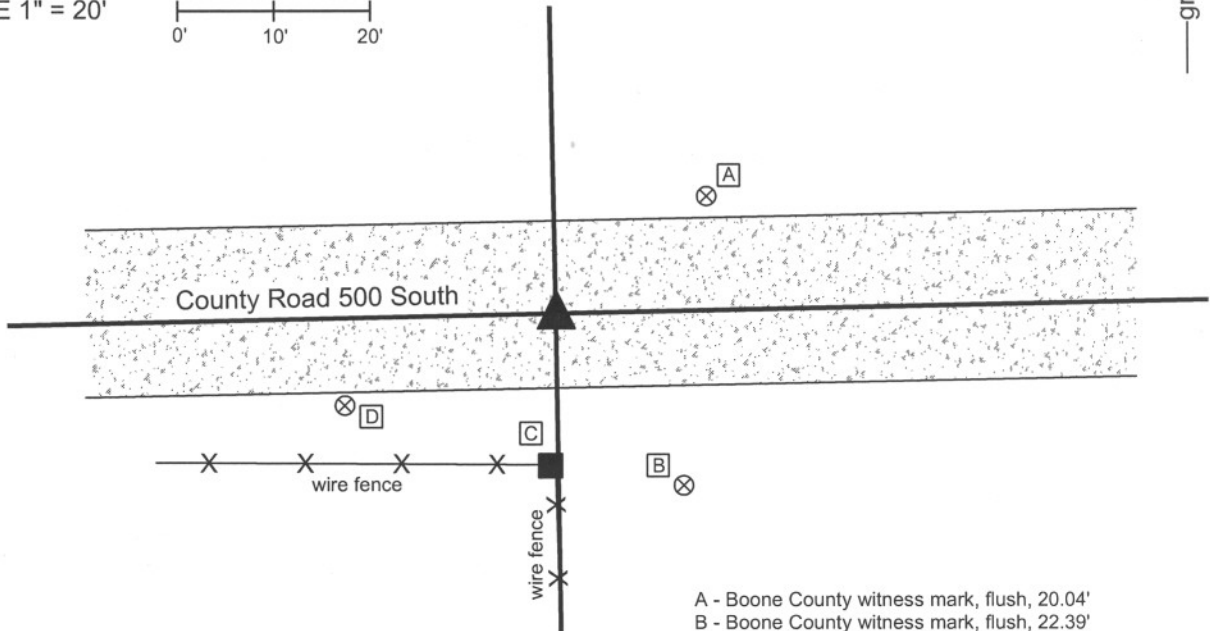
Type of monument: Harrison, 4" disk 'Section Corner'
 Depth: Four inches below adjacent gravel road surface

Indiana tie card references:
 IN02_T18NR1E25_76
 IN02_T18NR1E36_04



CORNER WITNESS DETAIL

SCALE 1" = 20'



- A - Boone County witness mark, flush, 20.04'
- B - Boone County witness mark, flush, 22.39'
- C - Mag nail set in N. side wood post, 2' a.g., 15.76'
- D - Boone County witness mark, flush, 24.08'

Boone County witness mark is a 3/8" diameter x 2' long rebar bearing a metal cap stamped "Boone County Witness Point."

The harrison monument was set in place of a railroad rail found.
 A BCS tie card dated December 14, 2005 calls for a railroad rail. No other BCS records for this corner were found beyond the original establishment of the corner by federal surveyors. The rail was present prior to 2005 and the source of the rail is not known.
 An area six feet E-W by six feet N-S, centered on the rail, was excavated to the clay (approximately 18 inches deep) on April 1, 2008. The rail was removed and no other monuments were found. The rail was replaced with a harrison monument set in concrete.
 This corner was originally established as a wood post in June 1820.



Kenneth E. Hedge
 Kenneth E. Hedge, County Surveyor

James S. Swift
 James S. Swift, IN LS 20200054

March 11, 2009

Worth Township

Section 25
 T18N, R1E

Perry Township

Section 36
 T18N, R1E

SECTION CORNER RECORD

SE 500-600

BOONE COUNTY SURVEYOR'S OFFICE

State Plane grid coordinates NAD83 (NSRS 2007):

Corner 1: North: 1719861.18 East: 3156725.03 (U.S. survey feet)

Corner 2: North: 1719937.06 East: 3156723.07 (U.S. survey feet)

CORNER WITNESS DETAIL

SCALE 1" = 60'



Corner 1

Type of monument: Harrison, 4" disk 'Section Corner'

Depth: Three inches above adjacent ground.

Corner 2

Type of monument: 5/8 inch rebar with metal cap stamped "Boone County Surveyor"

Depth: Flush with adjacent ground.

Indiana tie card references:

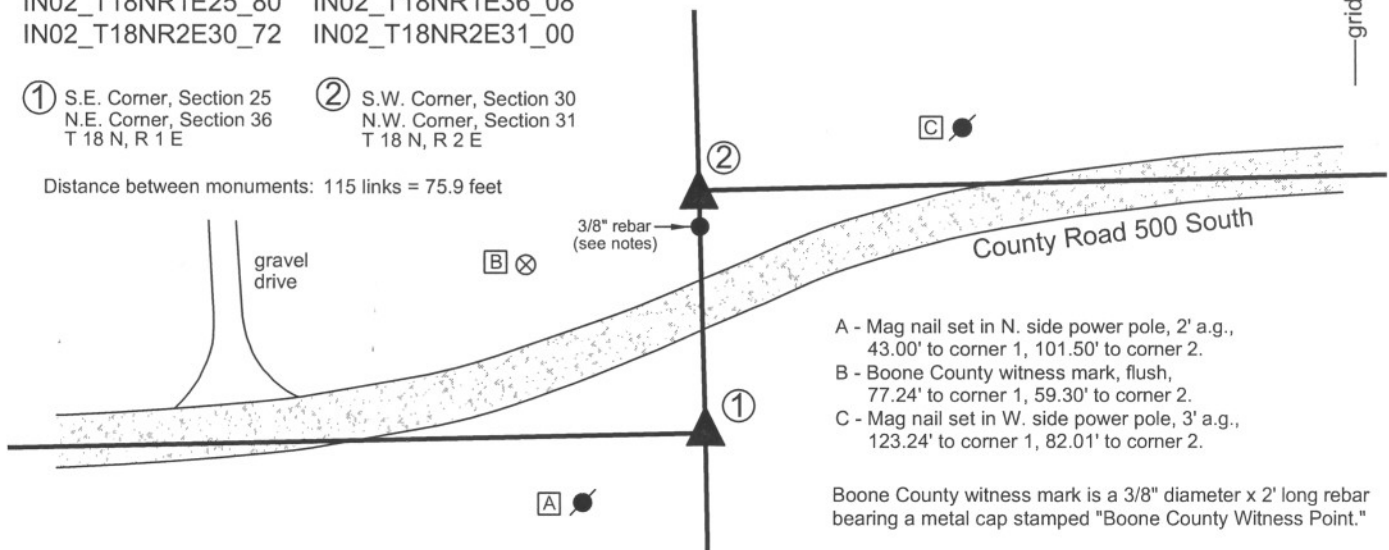
IN02_T18NR1E25_80 IN02_T18NR1E36_08

IN02_T18NR2E30_72 IN02_T18NR2E31_00

① S.E. Corner, Section 25
N.E. Corner, Section 36
T 18 N, R 1 E

② S.W. Corner, Section 30
N.W. Corner, Section 31
T 18 N, R 2 E

Distance between monuments: 115 links = 75.9 feet



- A - Mag nail set in N. side power pole, 2' a.g., 43.00' to corner 1, 101.50' to corner 2.
- B - Boone County witness mark, flush, 77.24' to corner 1, 59.30' to corner 2.
- C - Mag nail set in W. side power pole, 3' a.g., 123.24' to corner 1, 82.01' to corner 2.

Boone County witness mark is a 3/8" diameter x 2' long rebar bearing a metal cap stamped "Boone County Witness Point."

The harrison monument at corner 1 was set in place of a harrison monument found. The rebar at corner 2 was set on the range line at the record government closing distance from corner 1.

A BCS record dated August 30, 1869 states with respect to corner 1 "Found from stumps both trees. Drove no stake." A BCS record dated May 17, 1912 states with respect to corner 2 "Reestablished. Set rock. Good sized marked +." A BCS tie card dated November 28, 2005 shows the corner as a harrison monument with no documentation of source, though the harrison monument is in substantially the same position as a rebar shown on private surveys including a survey by American Consulting, Inc. recorded in Survey Book 8, page 15-16 in the Boone County Recorder's Office.

Corner 1 falls in an area which has clearly been disturbed and no evidence of the corner was found beyond the existing harrison monument. It is noted that the position of the harrison monument and the rebar which previously existed at the corner, fit very well with the extension of the existing roadway to the west and with the relative positions of the quarter corner 1/2 mile west and a railroad rail at the generally accepted quarter-quarter corner 1/4 mile west. The existing harrison was held as the corner and a new harrison monument was set in a more stable manner. Corner 2 falls near the toe of slope of an area of substantial fill for the adjacent roadway. A 3/8 inch rebar was found near the corner, but the small rebar fits with neither the original government closing distance, nor with the evidence of the section line in the form of the extended roadway to the east. Probing and limited excavation in the vicinity of the corner produced several small to medium sized rocks, none of which specifically appeared to be a section corner stone. No other evidence of this corner was found. Corner 2 was established on the range line at the record government closing distance of 115 links. This position fits well with the existing roadway to the east. A 5/8 inch diameter rebar, 3 feet long, was set at the corner, marked with an aluminum cap stamped 'Boone County Surveyor.' The 3/8 inch rebar is located 11.3 feet south of corner 2.

Corner 1 was originally established as a wood post in 1819 and corner 2 was originally established as a wood post in 1821.



Kenneth E. Hedge
 Kenneth E. Hedge, County Surveyor

James S. Swift
 James S. Swift, IN LS 20200054
 July 25, 2011

Worth Township

