

SECTION CORNER RECORD

BOONE COUNTY SURVEYOR'S OFFICE

NE 800-500

State Plane grid coordinates NAD83 (CORS96):

North: 1788222.91 East: 3150608.23 (U.S. survey feet)

Type of monument: Harrison, 4" disk 'Section Corner'

Depth: six inches below adjacent gravel road surface

Indiana tie card references:

IN02_T20NR1E23_80 IN02_T20NR1E24_72

IN02_T20NR1E26_08 IN02_T20NR1E25_00

CORNER WITNESS DETAIL

SCALE 1" = 30'

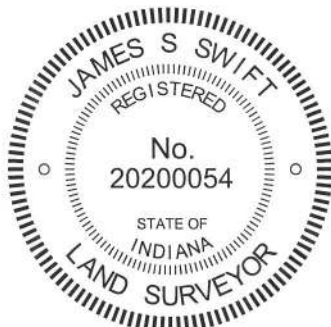
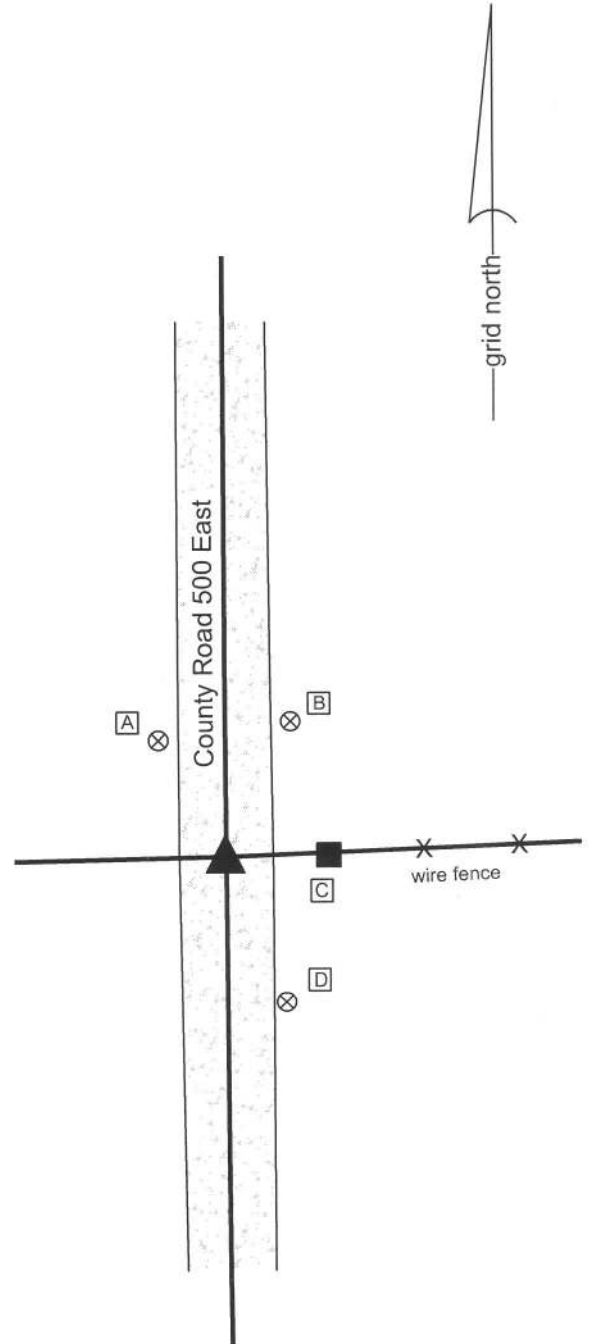
- A - Boone County witness mark, flush, 21.0'
- B - Boone County witness mark, flush, 23.5'
- C - Mag nail set in W. side post 2' a.g., 16.4'
- D - Boone County witness mark, flush, 24.5'

Boone County witness mark is a 3/8" diameter x 2' long rebar bearing a metal cap stamped "Boone County Witness Point."

The harrison monument was set in place of a stone found.

A BCS record of December 13 & 26, 1871 states "Reestablished from stump of S.E. tree and an old rotten stake we found when digging hole for rock which is 16.8.5 + and two small pieces under it." A BCS tie card dated May 30, 1975 states "no stone found - set rod." A BCS tie card dated March 18, 1996 shows the corner as a rebar with no documentation of source.

This corner was excavated on November 18, 2013. A stone was found flush with the surface of the road with a 5/8 inch rebar along the southeast side of the stone. The stone appeared to be leaning slightly to the east. The stone was removed from the road and found to measure 13 inches tall by 8 inches N-S by 5 inches E-W with an etched "+" mark on the west side, 4 inches from the top. Two smaller rocks were found below the stone, set in a manner which indicated that they were intended to support the stone and keep it vertical. These stones appear to each be half of a rock which split down the middle and they look like mirror images of each other. Each of the smaller stones measures 9 inches by 5 inches by 3 inches, more or less. The three stones together closely match the description from the 1871 record, except for the height of the main stone, which is 3 inches shorter than the record. The stone did appear to have been broken off at the top, which is logical given the fact that the top of the rock was flush with the road surface as originally found, and which would explain the variation from the 1871 description. All monuments were removed from the road and a harrison monument was set in place of the stone as it would be have been positioned if vertical. The rebar had been on the northwest side of the stone, 0.3' west and 0.3' north of the position held as the corner. This corner was originally established as a wood post in 1822.



Kenneth E. Hedge
 Kenneth E. Hedge, County Surveyor

James S. Swift
 James S. Swift, IN LS 20200054
 February 5, 2015

Clinton Township

Section 23 T20N, R1E	Section 24 T20N, R1E
Section 26 T20N, R1E	Section 25 T20N, R1E

PHOTOGRAPHIC DOCUMENTATION
Date of photography: November 18, 2013

View of the stone from above and west.



The stone, removed from the road, showing the etched mark that was on the east side of the stone.



The stone, removed from the road, along with the two small rocks found below.

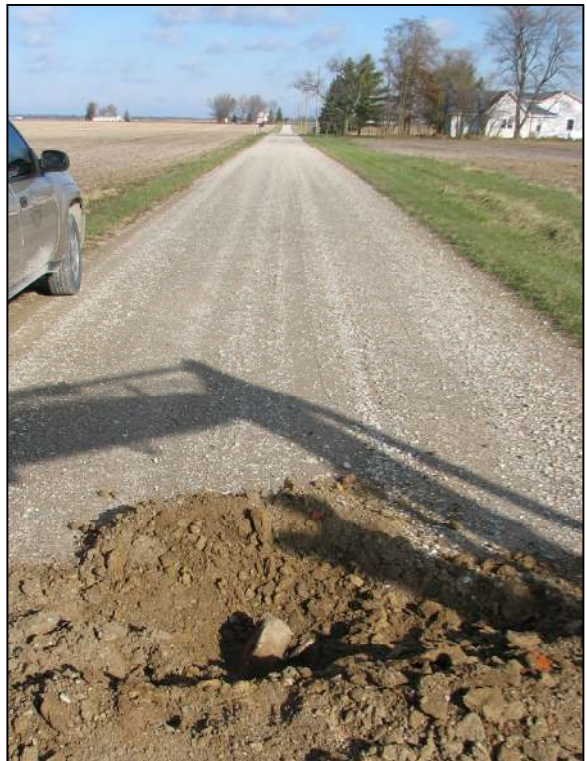


For details and documentation, refer to related sheet "Section Corner Record."

View from the west, looking across the stone and along the adjacent fence line to the east.



View from the south, looking across the stone and north along County Road 500 East.



SECTION CORNER RECORD

NE 800-550

BOONE COUNTY SURVEYOR'S OFFICE

State Plane grid coordinates NAD83 (CORS96):

North: 1788334.84 East: 3153242.37 (U.S. survey feet)

Type of monument: Harrison, 4" disk 'Section Corner'

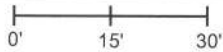
Depth: One inch below adjacent road surface

Indiana tie card references:

IN02_T20NR1E24_76 IN02_T20NR1E25_04

CORNER WITNESS DETAIL

SCALE 1" = 30'



The harrison monument was set in place of a vertical section of railroad rail. A BCS record pertaining to this corner, dated December 13 and 26, 1871, states "Reestablished in straight line due South of where it was before. Set a Rock due South of where it was before. Set a Rock 14.8.8 + and three small ones under it or around it." A BCS record dated July 16, 1871 states "Established W. corner Set Rock 6x12x14 +. Rock was set 5 feet due south of true point for corner, on line, on account of the point coming on a bridge. Old witness Ash stands N 15° E from true point, distant 149 links. Several small rocks and brick bats were placed beneath and around the witness corner." A BCS tie card dated August 19, 1968 states "No stone" and graphically demonstrates the corner to be slightly south of a bridge. A BCS tie card dated September, 1995 shows the corner to be a 5/8 inch rebar, south of a CMP culvert and north of a fence to the west.

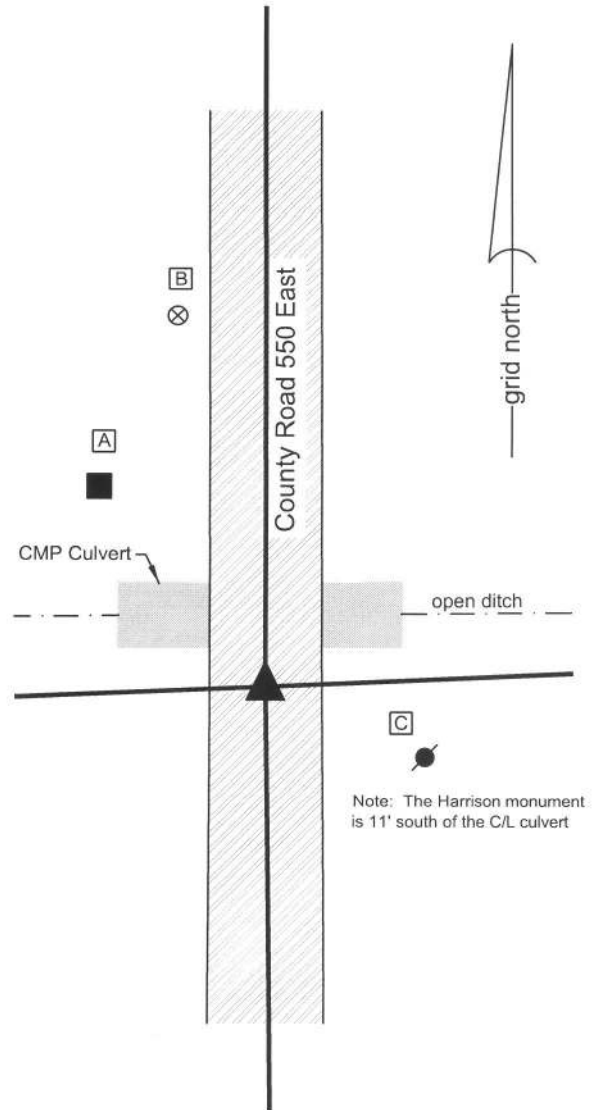
This corner was excavated on June 5, 2014. Prior to excavation, a rebar with a plastic cap (markings illegible) was found in the center of the road, per the 1995 distance ties. Excavation revealed a vertical section of railroad rail found at 9 inches deep, slightly west of the rebar. Further excavation revealed significant evidence of prior disturbance in the immediate vicinity of the corner. Several large pieces of concrete were found at a approximately 2 feet deep, immediately north of the rebar. At 30 inches deep, approximately 1.5 feet north of the rebar and rail, formed concrete was found which appeared to represent the footer of a prior bridge structure. Further excavation to the clay layer (34 inches deep) south of the formed footer revealed no further evidence of the corner.

It is noted that the fence to the west was clearly south of the corner, but it is also noted that the fence is generally along the top of the bank of the open ditch running east-west through this area. The position of the fence is most likely controlled by topography and is not considered evidence of the section line. The records from the 1800s clearly state that the stones were set south of the true corner due to the presence of a bridge at the corner. This casts some doubt on the position of the railroad rail, being south of the footer of the old bridge. A pure interpretation of the evidence with respect to the record implies that the corner may be north of the rail, as found. This interpretation is also borne out by the relative distances to the corners to the north and south. However, it is not known when the bridge for which the footer was installed and it is not possible to know, with the available evidence, whether this is the same bridge referred to in the records of the 1800s, or how the found footer fit with the surface of the bridge. Much is uncertain relative to the old records and the found evidence. Given this uncertainty and the apparent previous acceptance of the rail and rebar as representing the corner since at least 1968, the rail was accepted as marking the corner. The rail and rebar were removed. A Harrison monument was set in the position of the top of the rail, as found. The rebar had been approximately 0.5 foot east of the rail.

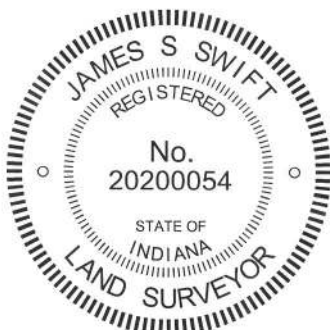
This corner was originally established as a wood post in 1822.

- A - Mag nail set in E. side wood post, 3.5' a.g., 40.0'
- B - Boone County witness mark, flush, 59.6'
- C - Mag nail set in w. side power pole, 2' a.g., 25.9'

Boone County witness mark is a 3/8" diameter x 2' long rebar bearing a metal cap stamped "Boone County Witness Point."



Note: The Harrison monument is 11' south of the C/L culvert



Kenneth E. Hedge
Kenneth E. Hedge, County Surveyor

James S. Swift
James S. Swift, IN LS 20200054
March 27, 2015

Clinton Township

Section 24
T20N, R1E

Section 25
T20N, R1E

SECTION CORNER RECORD

NE 800-600

BOONE COUNTY SURVEYOR'S OFFICE

State Plane grid coordinates NAD83 (2011):

Corner 1: North: 1788449.66 East: 3155925.81 (U.S. survey feet)

Corner 2: North: 1788627.86 East: 3155926.02 (U.S. survey feet)

Type and depth of monument:

Corner 1: Harrison, 4" disk 'Section Corner' 3 inches above grade

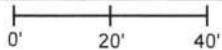
Corner 2: 5/8" rebar with metal cap 'Boone County Surveyor' 14 inches deep

Indiana tie card references:

IN02_T20NR1E24_80 IN02_T20NR2E19_72

IN02_T20NR1E25_08 IN02_T20NR2E30_00

CORNER WITNESS DETAIL

SCALE 1" = 40' 

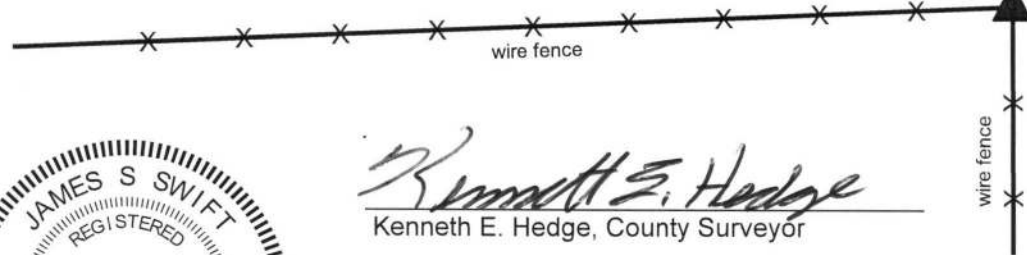
The Harrison monument at Corner 1 was set over remnants of a wood post found. The rebar at Corner 2 was set at a calculated position.

A BCS record of December 13 & 26, 1871 states, with respect to Corner 1, "Reestablished by running the line from D Section 25 North 79.80 to D of this Sect. I think the Oak B Tree was a little west of the range line but am not sure but it is gone. Placed corner in the middle of the line I run 39.80 from D and 270 links South of corner Section 19 & 30. Set a Rock 14.10.7 +." The record also includes a long note explaining the establishment of the south line of section 24.

A BCS record of December 20, 1870 states, with respect to Corner 2, "SW cor Sect [19] Reestablished at intersection of Range line with South line Sect from E to e & F to f. Set a Rock 8.6. by 5 1/2 + & a stake under it."

Excavation was performed at Corner 1 on April 25, 2018. Prior to excavation, standing fences were visible to the south and west of the corner, but the immediate vicinity of the corner was clearly disturbed, with a variety of rocks and old fencing piled together at the point where the standing fences intersect and also slightly SW of that point. The rubble was removed from the apparent position of the corner and substantial manual excavation was performed in this immediate vicinity. The stone 14.10.7 stone called for in the December 13 & 26, 1871 record was not found. It is considered most likely that the stone was removed prior to or during the obvious disruption of the corner which caused the pile of rubble. However, remnants of a wood post were found at 10 inches deep at the exact point where the fences from the south and west appear to intersect. The post appeared to be of the same size and character as the posts supporting the standing fencing to the south and west. The remnants of the post were accepted as representing the best available evidence of the corner and were held as marking the corner. It is noted that this corner, together with the south quarter corner and southwest corner of Section 24 (see corners NE 800-500 and NE 800-550) fall close to a straight line, which correlates with the explanatory notes from the 1871 record discussing the establishment of the south line of Section 24.

Corner 2 falls in a tilled field. The position of Corner 2 was computed on the range line at 270 links north of Corner 1. Excavation in the vicinity of this calculated position on April 27, 2018 revealed various pieces of broken clay tile at up to 12 inches deep, indicating previous disturbance of this corner. A 30 inch length of 5/8 inch rebar was set at at the calculated position. The rebar was set 14 inches below the surface grade of the field and capped with a metal cap stamped 'Boone County Surveyor.' The 270 links (178.2') distance was held as firm, though a scale factor of 1.00451 is typically applied to distances reported in records from 1860 to 1895. An uncertainty of approximately 0.8 foot N-S is therefore associated with the position of Corner 2 with respect to the offset distance held.



② S.W. Corner, Section 19
N.W. Corner, Section 30
T 20 N, R 2 E

The Harrison monument at Corner 1 is situated at the intersection of standing fences to the south and west, witnessed by an orange fiberglass lathe labeled 'Survey Markef.' The monument is adjacent to and northeast of a pile of rocks and fencing. Corner 2 falls within a tilled field, set at 14 inches below grade and is not visible on the surface. No other distance ties are provided.

Distance between monuments:
178.2' (270 links)

① S.E. Corner, Section 24
N.E. Corner, Section 25
T 20 N, R 1 E



Kenneth E. Hedge
Kenneth E. Hedge, County Surveyor

James S. Swift
James S. Swift, IN LS 20200054
May 23, 2018

Clinton Township	Marion Township
Section 24 T20N, R1E	Section 19 T20N, R2E
Section 25 T20N, R1E	Section 30 T20N, R2E

SECTION CORNER RECORD

NE 850-500

BOONE COUNTY SURVEYOR'S OFFICE

State Plane grid coordinates NAD83 (CORS96):

North: 1790861.36 East: 3150594.12 (U.S. survey feet)

Type of monument: Harrison, 4" disk 'Section Corner'

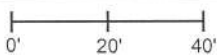
Depth: One inch below adjacent road surface

Indiana tie card references:

IN02_T20NR1E23_44 IN02_T20NR1E24_36

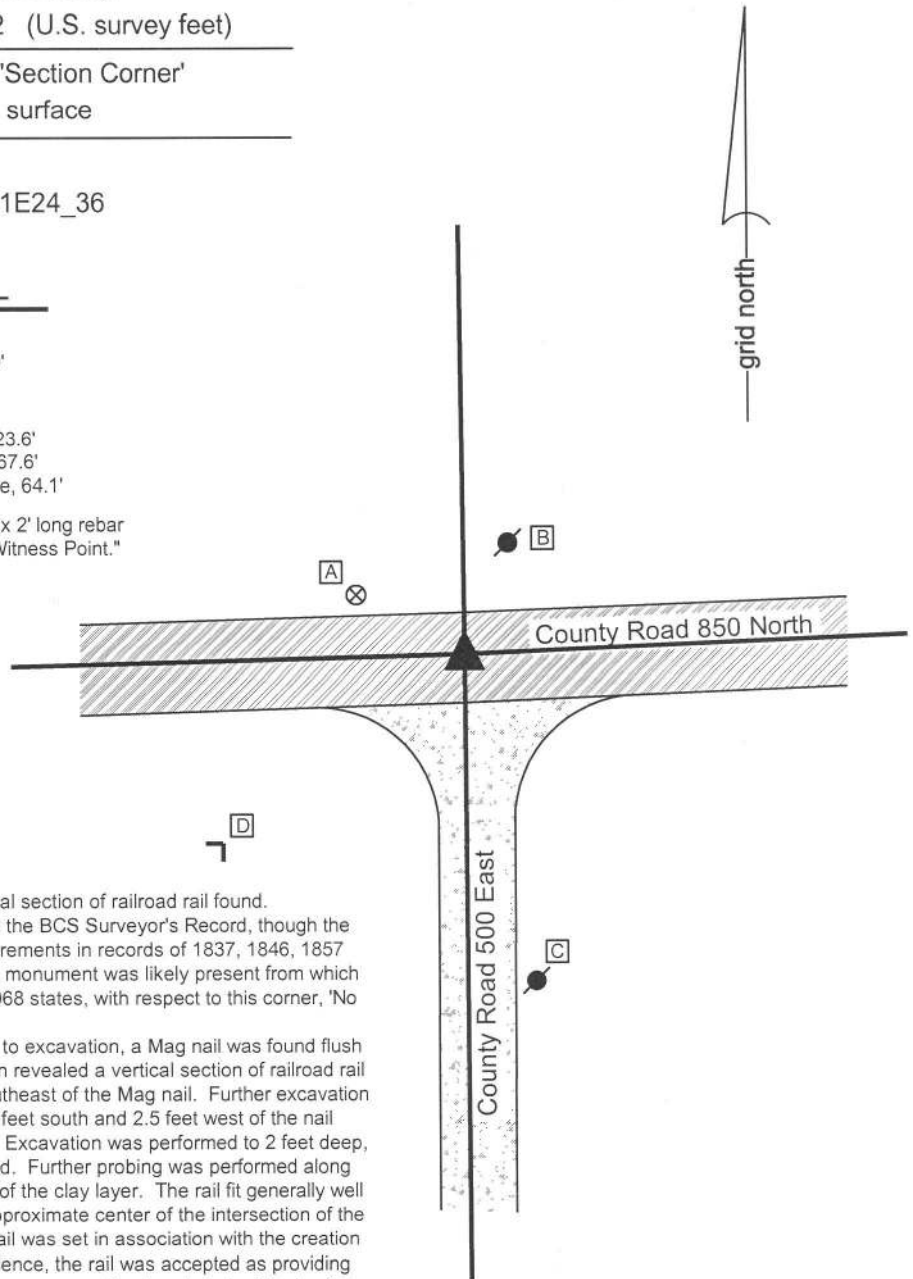
CORNER WITNESS DETAIL

SCALE 1" = 40'



- A - Boone County witness mark, flush, 26.0'
- B - Mag nail set in S. side power pole, 2' a.g., 23.6'
- C - Mag nail set in N. side power pole, 2' a.g., 67.6'
- D - N.E. corner, brick chimney on N. side house, 64.1'

Boone County witness mark is a 3/8" diameter x 2' long rebar bearing a metal cap stamped "Boone County Witness Point."

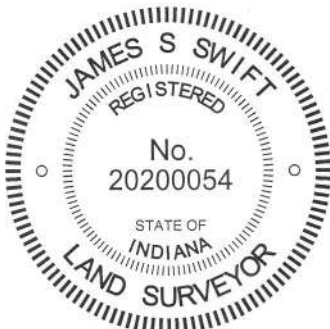


The Harrison monument was set in place of a vertical section of railroad rail found.

No specific descriptions of this corner were found in the BCS Surveyor's Record, though the corner is mentioned as the terminal point for measurements in records of 1837, 1846, 1857 and 1882, indicating that at that time some physical monument was likely present from which to measure. A BCS tie card dated September 3, 1968 states, with respect to this corner, 'No stone found.'

This corner was excavated on May 29, 2014. Prior to excavation, a Mag nail was found flush with the surface of the asphalt roadway. Excavation revealed a vertical section of railroad rail found at 7 inches deep, approximately 3 inches southeast of the Mag nail. Further excavation of an area extending 2 feet north, 2.5 feet east, 5.5 feet south and 2.5 feet west of the nail and rail revealed no further evidence of the corner. Excavation was performed to 2 feet deep, several inches into the clay layer below the road bed. Further probing was performed along the south edge of the excavation area at the depth of the clay layer. The rail fit generally well with the local evidence of the corner being in the approximate center of the intersection of the two roads. It is believed to be most likely that the rail was set in association with the creation of the 1968 tie card. Having found no contrary evidence, the rail was accepted as providing the best available evidence of the corner. The rail was removed and replaced with a Harrison monument set in the same position.

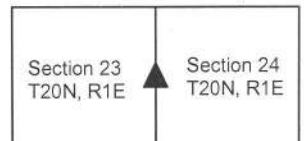
This corner was originally established as a wood post in 1822.




Kenneth E. Hedge, County Surveyor


James S. Swift, IN LS 20200054
March 27, 2015

Clinton Township



SECTION CORNER RECORD

NE 850-600

BOONE COUNTY SURVEYOR'S OFFICE

State Plane grid coordinates NAD83 (2011):
 North: 1791109.49 East: 3155928.89 (U.S. survey feet)
 North: 1791277.79 East: 3155927.74 (U.S. survey feet)

Type and depth of monument:
 Corner 1: Harrison, 4" disk 'Section Corner', flush
 Corner 2: 5/8" rebar with metal cap 'Boone County Surveyor'

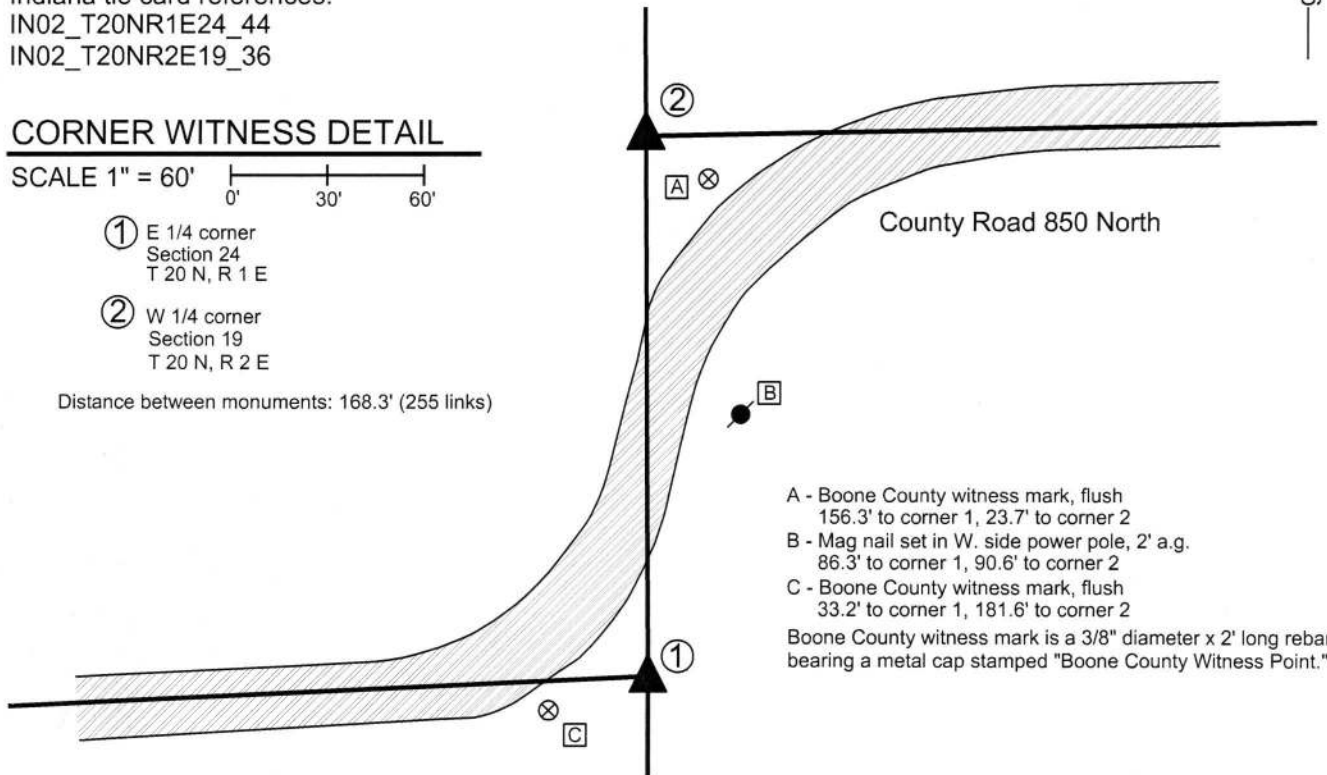
Indiana tie card references:
 IN02_T20NR1E24_44
 IN02_T20NR2E19_36

CORNER WITNESS DETAIL

SCALE 1" = 60'
 0' 30' 60'

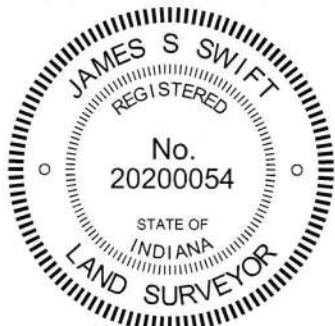
- ① E 1/4 corner
Section 24
T 20 N, R 1 E
- ② W 1/4 corner
Section 19
T 20 N, R 2 E

Distance between monuments: 168.3' (255 links)



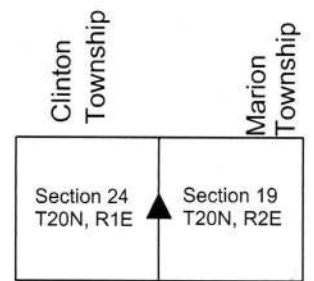
- A - Boone County witness mark, flush
156.3' to corner 1, 23.7' to corner 2
 - B - Mag nail set in W. side power pole, 2' a.g.
86.3' to corner 1, 90.6' to corner 2
 - C - Boone County witness mark, flush
33.2' to corner 1, 181.6' to corner 2
- Boone County witness mark is a 3/8" diameter x 2' long rebar bearing a metal cap stamped "Boone County Witness Point."

The Harrison monument at corner 1 was set per local evidence. A BCS record of December 20, 1870, with respect to corner 2, states "drove stake." A BCS record of December 13 & 26, 1871, with respect to corner 1, states "Reestablished from Oak stump of tree. Set two Rocks one 6.5 1/2. 3+ Top one 18.14.6 +.....The lap is 255 links." No recent BCS tie cards were found referencing these corners. Excavation was performed at both corners on November 19, 2013. No monuments, iron or otherwise, were found prior to excavation. The specific areas of excavation were determined by local evidence in the form of the extended center of County Road 850 North to the east (corner 2) and west (corner 1), the old fence to the south of corner 1 and the offset distance of 255 links stated on the 1871 record. This distance (255 links = 168.3 feet) fits well with the relative locations of the road to the east and west. The expected locations of both corners fall in grass, with the road jogging briefly north-south between them. Large areas were excavated at both corners. The excavation revealed no further physical evidence of the corners. Corner 1 was established at a point in line with the fence to the south, 25 feet north of the corner post, which point is also in line with the center of County Road 850 North to the west. Corner 2 was established on the range line at 255 links north of corner 1. A 5/8 inch diameter rebar topped with a metal cap stamped "Boone County Surveyor" was set at Corner 2. Corner 1 was originally established as a wood post in 1819. Corner 2 is not an original federal corner.



Kenneth E. Hedge
 Kenneth E. Hedge, County Surveyor

James S. Swift
 James S. Swift, IN LS 20200054
 April 12, 2017



SECTION CORNER RECORD

NE 900-550

BOONE COUNTY SURVEYOR'S OFFICE

State Plane grid coordinates NAD83 (CORS96):

North: 1793631.02 East: 3153237.75 (U.S. survey feet)

Type of monument: Harrison, 4" disk 'Section Corner'

Depth: One inch below adjacent road surface

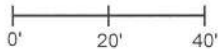
Indiana tie card references:

IN02_T20NR1E13_76

IN02_T20NR1E24_04

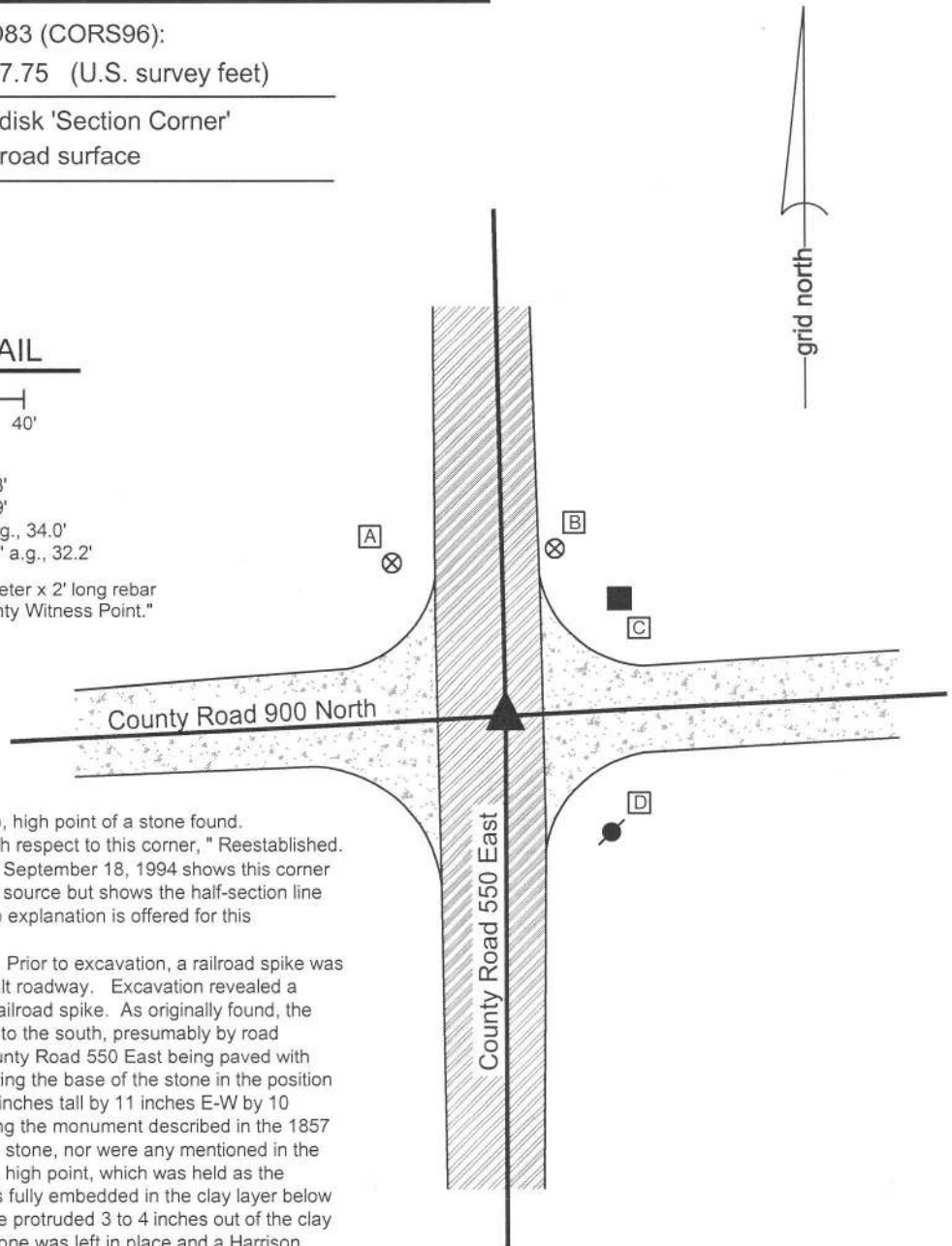
CORNER WITNESS DETAIL

SCALE 1" = 40'



- A - Boone County witness mark, flush, 41.3'
- B - Boone County witness mark, flush, 37.9'
- C - Mag nail set in W. side wood post, 2' a.g., 34.0'
- D - Mag nail set in N.W. side power pole, 2' a.g., 32.2'

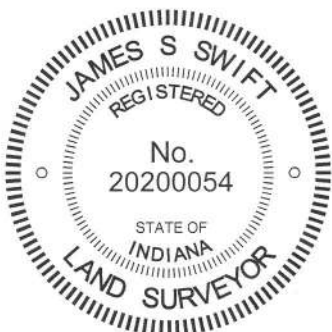
Boone County witness mark is a 3/8" diameter x 2' long rebar bearing a metal cap stamped "Boone County Witness Point."



The Harrison monument was set over the top, high point of a stone found. A BCS record of April 14-15, 1857 states, with respect to this corner, "Reestablished. Set Rock 11 by 14 in." A BCS tie card dated September 18, 1994 shows this corner as a railroad spike with no documentation of source but shows the half-section line as being 3 feet west of the railroad spike. No explanation is offered for this contradictory information.

This corner was excavated on June 5, 2014. Prior to excavation, a railroad spike was found at 2 inches deep in a hole in the asphalt roadway. Excavation revealed a stone found at 20 inches deep, north of the railroad spike. As originally found, the stone appeared to have been leaned slightly to the south, presumably by road grading equipment at some point prior to County Road 550 East being paved with asphalt. The stone was stood vertically, leaving the base of the stone in the position found. As stood up, the stone measured 14 inches tall by 11 inches E-W by 10 inches N-S. The stone was accepted as being the monument described in the 1857 record. No specific marks were found on the stone, nor were any mentioned in the record. As stood up, the stone had a distinct high point, which was held as the corner. When originally found, the stone was fully embedded in the clay layer below the road. Once stood up, the top of the stone protruded 3 to 4 inches out of the clay layer into the bottom of the road bed. The stone was left in place and a Harrison monument was set over the high point of the stone. The railroad spike, removed during excavation, had been 0.3 foot east and 1.2 feet south of the top high, point of the stone, as stood vertically.

This corner was originally established as a wood post in 1822.



Kenneth E. Hedge
Kenneth E. Hedge, County Surveyor

James S. Swift
James S. Swift, IN LS 20200054
March 27, 2015

Clinton Township

Section 13
T20N, R1E

Section 24
T20N, R1E

PHOTOGRAPHIC DOCUMENTATION

Date of photography: June 5, 2014

The stone as originally found, leaning towards the south



The stone stood up in a vertical position.



View from the north, looking across the stone (stood up and partially repacked in fill material) and south along County Road 550 East.



View from the east, looking across the stone (stood up and partially repacked in fill material) and west along County Road 900 North.



For details and documentation, refer to related sheet "Section Corner Record."

SECTION CORNER RECORD

NE 900-600

BOONE COUNTY SURVEYOR'S OFFICE

State Plane grid coordinates NAD83 (2011):

Corner 1: North: 1793764.62 East: 3155910.87 (U.S. survey feet)

Corner 2: North: 1793920.37 East: 3155909.67 (U.S. survey feet)

Corner 1: Harrison, 4" disk 'Section Corner', flush

Corner 2: 5/8" rebar with metal cap 'Boone County Surveyor, 14" deep

Indiana tie card references:

IN02_T20NR1E13_80 IN02_T20NR2E18_72

IN02_T20NR1E24_08 IN02_T20NR2E19_00

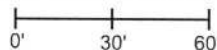
① S.E. Corner, Section 13
N.E. Corner, Section 24
T 20 N, R 1 E
Harrison Monument set

② S.W. Corner, Section 18
N.W. Corner, Section 19
T 20 N, R 2 E
5/8 inch rebar set, 14 inches deep

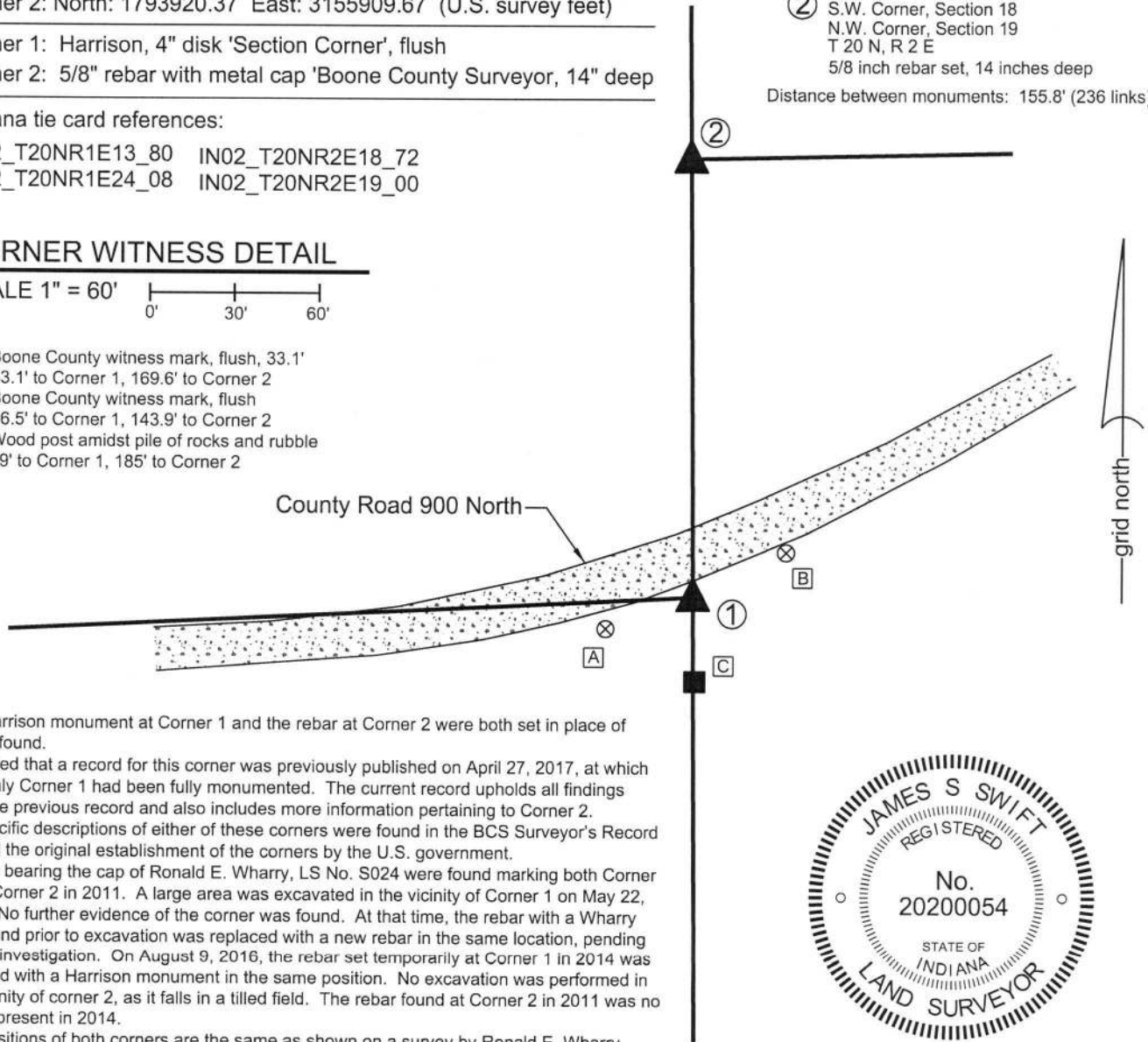
Distance between monuments: 155.8' (236 links)

CORNER WITNESS DETAIL

SCALE 1" = 60'



- A - Boone County witness mark, flush, 33.1'
33.1' to Corner 1, 169.6' to Corner 2
- B - Boone County witness mark, flush
36.5' to Corner 1, 143.9' to Corner 2
- C - Wood post amidst pile of rocks and rubble
29' to Corner 1, 185' to Corner 2



The Harrison monument at Corner 1 and the rebar at Corner 2 were both set in place of rebars found.

It is noted that a record for this corner was previously published on April 27, 2017, at which time only Corner 1 had been fully monumented. The current record upholds all findings from the previous record and also includes more information pertaining to Corner 2.

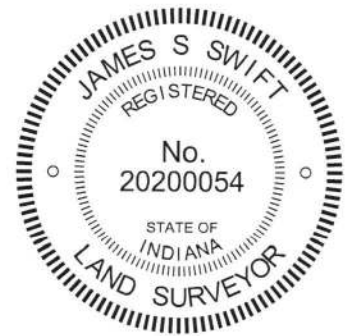
No specific descriptions of either of these corners were found in the BCS Surveyor's Record beyond the original establishment of the corners by the U.S. government.

Rebars bearing the cap of Ronald E. Wharry, LS No. S024 were found marking both Corner 1 and Corner 2 in 2011. A large area was excavated in the vicinity of Corner 1 on May 22, 2014. No further evidence of the corner was found. At that time, the rebar with a Wharry cap found prior to excavation was replaced with a new rebar in the same location, pending further investigation. On August 9, 2016, the rebar set temporarily at Corner 1 in 2014 was replaced with a Harrison monument in the same position. No excavation was performed in the vicinity of corner 2, as it falls in a tilled field. The rebar found at Corner 2 in 2011 was no longer present in 2014.

The positions of both corners are the same as shown on a survey by Ronald E. Wharry recorded as Instrument 201100003587 in the Boone County Surveyor's Office.

The Wharry survey holds the record closing distance of 236 links between the corners, which also fits with the evidence of the roadways to the east and west of the corners. This distance yields a reasonable position for Corner 2. On April 9, 2018, a rebar with a metal cap stamped "Boone County Surveyor" was set in the same position as the rebar originally found in 2011 marking Corner 2. The rebar was set at 14 inches deep to avoid disturbance by agricultural equipment.

Corner 1 was originally established as a wood post in 1819. Corner 2 was originally established as a wood post in 1821.



James S. Swift

James S. Swift, IN LS 20200054

Kenneth E. Hedge

Kenneth E. Hedge, County Surveyor

April 18, 2018

Marion Township	Clinton Township
Section 13 T20N, R1E	Section 18 T20N, R2E
Section 24 T20N, R1E	Section 19 T20N, R2E