

SECTION CORNER RECORD

NE 200-1100

BOONE COUNTY SURVEYOR'S OFFICE

State Plane grid coordinates NAD83 (NSRS 2007):
North: 1757380.00 East: 3182991.00 (U.S. survey feet)

Type of monument: Harrison, 4" disk 'Section Corner'
Depth: One inch below adjacent road surface

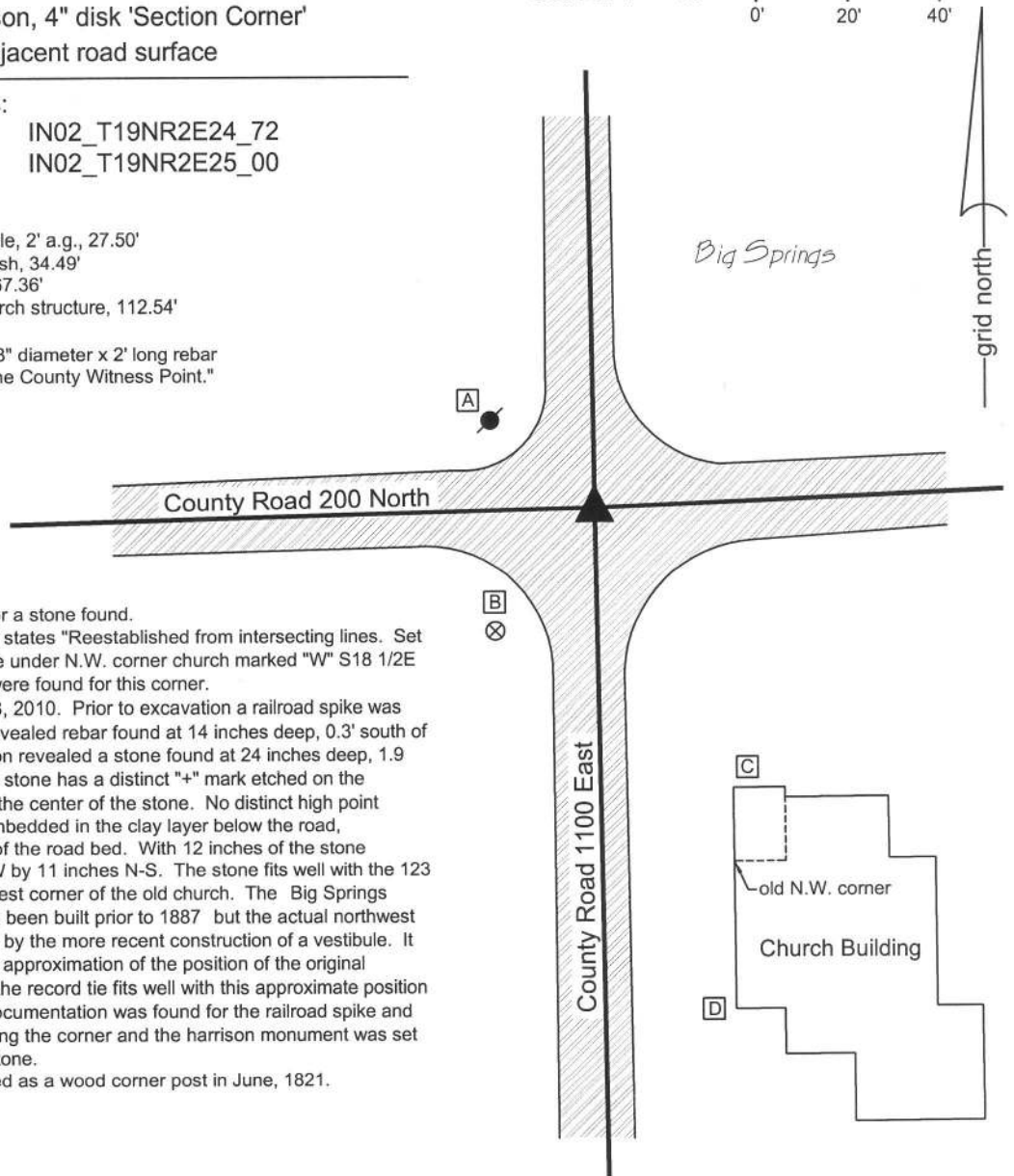
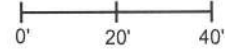
Indiana tie card references:
IN02_T19NR2E23_80 IN02_T19NR2E24_72
IN02_T19NR2E24_08 IN02_T19NR2E25_00

- A - Mag nail set in S. side power pole, 2' a.g., 27.50'
- B - Boone County witness mark, flush, 34.49'
- C - N.W. corner, church vestibule, 67.36'
- D - Southwesterly corner, main church structure, 112.54'

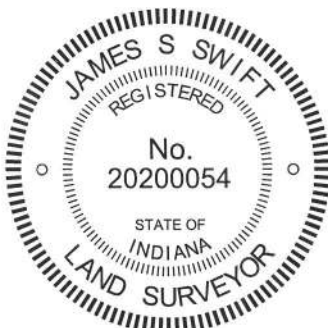
Boone County witness mark is a 3/8" diameter x 2' long rebar bearing a metal cap stamped "Boone County Witness Point."

CORNER WITNESS DETAIL

SCALE 1" = 40'



The harrison monument was set over a stone found.
A BCS record of September 5, 1887 states "Reestablished from intersecting lines. Set a rock 27,11,15 +. Foundation stone under N.W. corner church marked "W" S18 1/2E 123 1/2." No recent BCS tie cards were found for this corner.
This corner was excavated on July 8, 2010. Prior to excavation a railroad spike was visible at the surface. Excavation revealed rebar found at 14 inches deep, 0.3' south of the railroad spike. Further excavation revealed a stone found at 24 inches deep, 1.9 feet south of the railroad spike. The stone has a distinct "+" mark etched on the sloping south side at approximately the center of the stone. No distinct high point exists on the stone. The stone is embedded in the clay layer below the road, protruding 2 inches into the bottom of the road bed. With 12 inches of the stone exposed, it measures 11 inches E-W by 11 inches N-S. The stone fits well with the 123 1/2 link (81.51 feet) tie to the northwest corner of the old church. The Big Springs Community Church appears to have been built prior to 1887 but the actual northwest corner of the old church is obscured by the more recent construction of a vestibule. It is possible to estimate a reasonable approximation of the position of the original northwest corner of the church and the record tie fits well with this approximate position of the building corner. No source documentation was found for the railroad spike and rebar. The stone was held as marking the corner and the harrison monument was set directly over the etched "+" on the stone.
This corner was originally established as a wood corner post in June, 1821.



Kenneth E. Hedge
Kenneth E. Hedge, County Surveyor

James S. Swift
James S. Swift, IN LS 20200054
July 25, 2011, Revised March 18, 2013

Marion Twp	Section 23 T19N, R2E	Section 24 T19N, R2E
Union Twp	Section 26 T19N, R2E	Section 25 T19N, R2E

PHOTOGRAPHIC DOCUMENTATION

Date of photography: July 8, 2010

View of the stone from the south.



View of the stone from the south, showing mark.



View from above the stone looking east along County Road 200 North.



View of the stone from the north.



Big Springs Community Church, from above the stone at the time of excavation.



For details and documentation, refer to related sheet "Section Corner Record."

SECTION CORNER RECORD

BOONE COUNTY SURVEYOR'S OFFICE

NE 200-1150

State Plane grid coordinates NAD83 (CORS96):

North: 1757497.06 East: 3185675.34 (U.S. survey feet)

Type of monument: Harrison, 4" disk 'Section Corner'

Depth: One inch below adjacent road surface

Indiana tie card references:

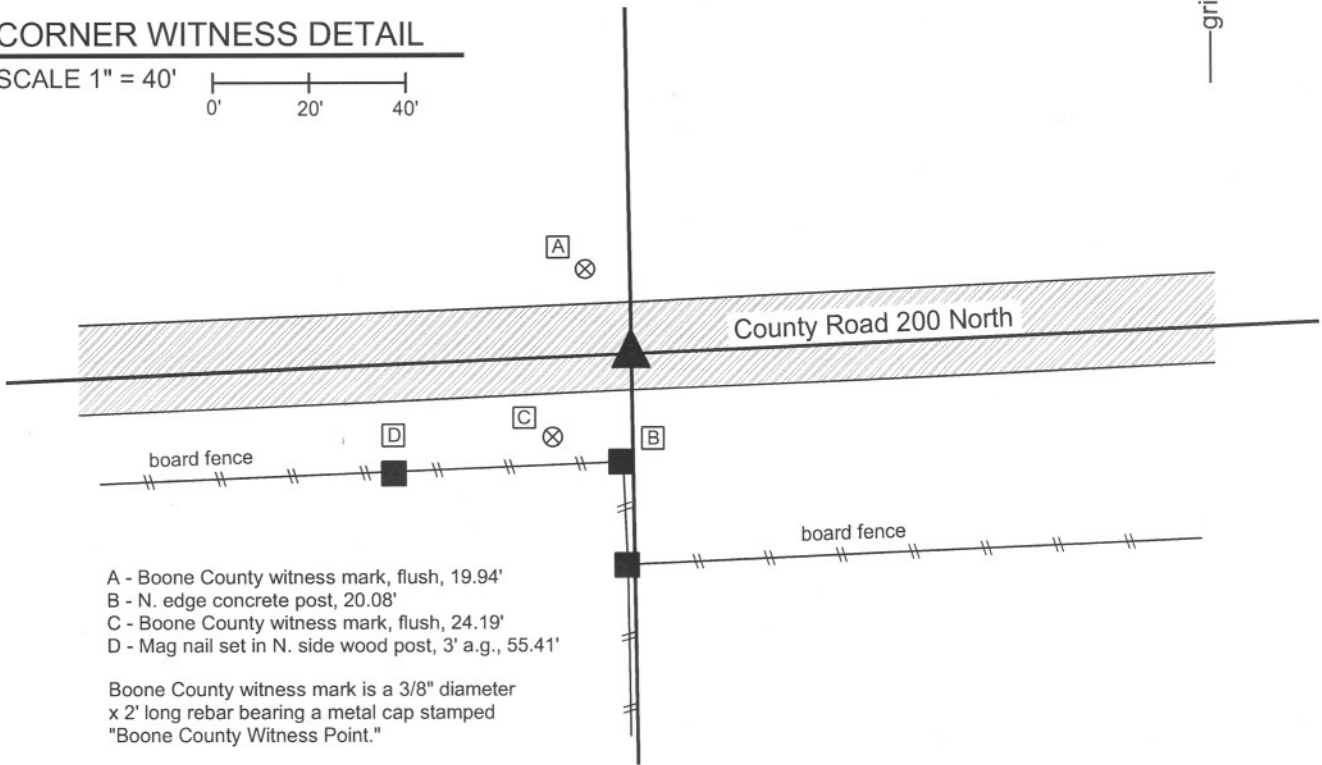
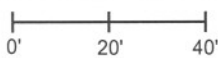
IN02_T19NR2E24_76

IN02_T19NR2E25_04



CORNER WITNESS DETAIL

SCALE 1" = 40'

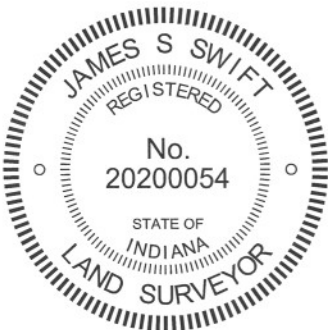


- A - Boone County witness mark, flush, 19.94'
- B - N. edge concrete post, 20.08'
- C - Boone County witness mark, flush, 24.19'
- D - Mag nail set in N. side wood post, 3' a.g., 55.41'

Boone County witness mark is a 3/8" diameter x 2' long rebar bearing a metal cap stamped "Boone County Witness Point."

The harrison monument was set over a stone found.

A BCS record of May 6, 1872 states "Traced the line G to f twice its distance to F were found the stake and Reestablished the corner. Set two Rocks one 11.9.6 +. Top one 16.12.9 +." A BCS tie card dated August 6, 1872 states "no stone found." This corner was excavated on April 13, 2011. Prior to excavation a mag nail was found 1 inch deep in a chiseled hole in the asphalt. Excavation revealed a 1/2 inch diameter rebar found at 7 inches deep, 0.2 foot north of the nail. Further excavation revealed the top stone described in the 1872 record at 11 inches deep. With 8 inches of the top of the stone exposed, the stone measures 12 inches E-W by 8 inches N-S with a chiseled "+" on the top, center. The chiseled mark is worn, but is but visible. The stone is embedded in the clay layer below the road, protruding 2 inches into the bottom of the road bed. With 8 inches exposed the stone remained entirely stable in the clay. The total height of the stone was not measured. The stone was left in place and a harrison monument was set directly over the chiseled "+" on the top of the rock. The nail, removed during excavation, had been 1.1 feet south and 1.8 feet west of the stone. The rebar was also removed during excavation. This corner was originally established as a wood post in July, 1821.



Kenneth E. Hedge
 Kenneth E. Hedge, County Surveyor

James S. Swift
 James S. Swift, IN LS 20200054
 March 1, 2012

Marion Twp

Section 24
 T19N, R2E

Union Twp

Section 25
 T19N, R2E

PHOTOGRAPHIC DOCUMENTATION

Date of photography: April 13, 2011

View of the stone as first exposed.



View of the partially exposed stone from the west.



View from above the stone, looking west along County Road 200 North.



View of the partially exposed stone from the south.



View of the stone from overhead.



For details and documentation, refer to related sheet "Section Corner Record."

SECTION CORNER RECORD

NE 200-1200

BOONE COUNTY SURVEYOR'S OFFICE

State Plane grid coordinates NAD83 (2011):

Corner 1: North: 1757610.43 East: 3188364.63 (U.S. survey feet)

Corner 2: North: 1757565.29 East: 3188366.10 (U.S. survey feet)

Type of monument: Harrison, 4" disk 'Section Corner'

Depth: One inch below adjacent road surface (cor. 1) flush (cor. 2)

Indiana tie card references:

IN02_T19NR2E24_80 IN02_T19NR3E19_72

IN02_T19NR2E25_08 IN02_T19NR3E30_00

CORNER WITNESS DETAIL

SCALE 1" = 60'

- A - Mag nail set in S.E. side power pole, 2' a.g., 72.5' to corner 1, 93.4' to corner 2
- B - Mag nail set in E. side power pole, 2' a.g., 67.5' to corner 1, 111.8' to corner 2
- C - Boone County witness marker, flush, 73.4' to corner 1, 43.4' to corner 2
- D - Mag nail set in N.E. side power pole, 2' a.g., 35.1' to corner 1, 25.6' to corner 2

The Harrison monument at corner 1 was set over a stone found.

The Harrison monument at corner 2 was set by the Hamilton County Surveyor's Office over a stone found.

No specific descriptions of corner 1 were found in the BCS Surveyor's Record. A BCS tie card dated April 23, 1977 shows the corner as a stone 15 inches deep.

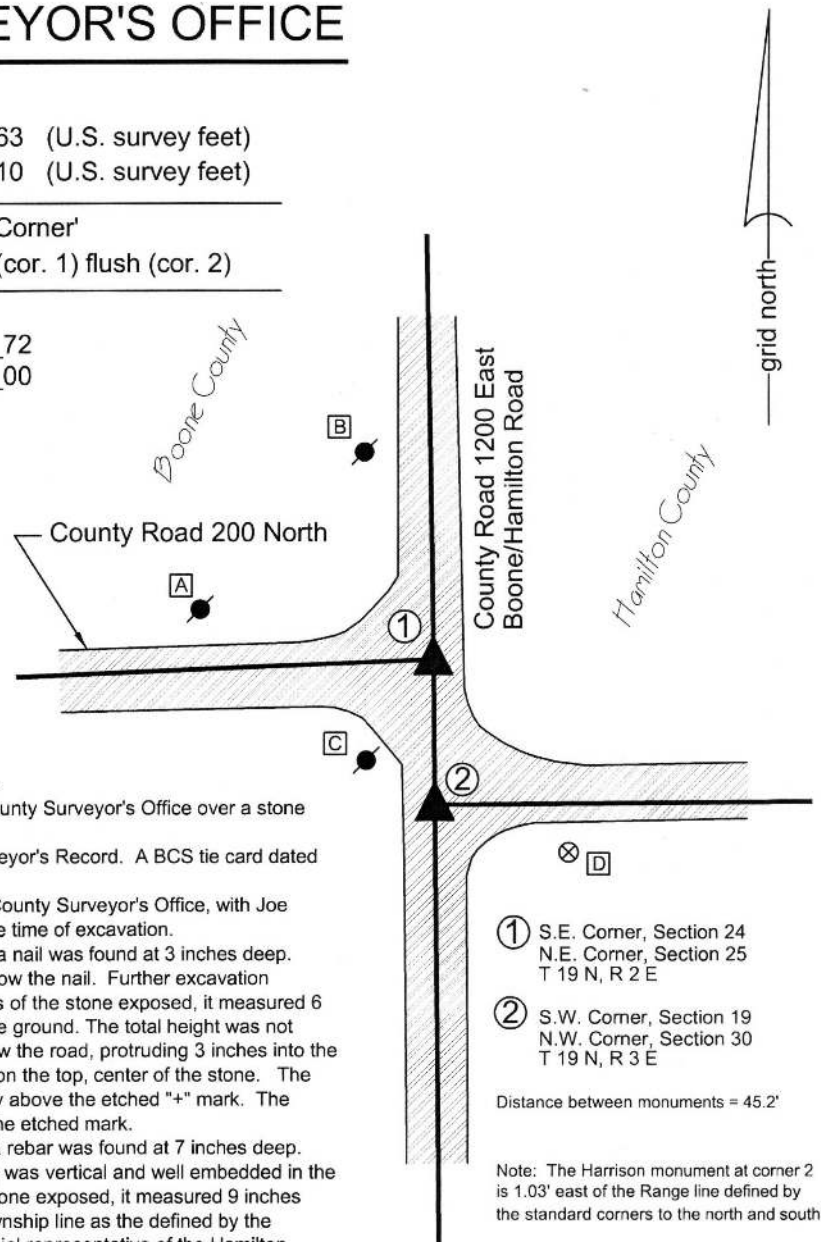
Both corners were excavated in cooperation with the Hamilton County Surveyor's Office, with Joe Mullins, LS and other representatives of that office present at the time of excavation.

Corner 1 was excavated on July 12, 2012. Prior to excavation, a nail was found at 3 inches deep.

Excavation revealed a rebar found at 9 inches deep, directly below the nail. Further excavation revealed a stone found at 20 inches deep. With the top 6 inches of the stone exposed, it measured 6 inches N-S by 7 inches E-W and clearly extended further into the ground. The total height was not measured. The stone was well embedded in the clay layer below the road, protruding 3 inches into the bottom of the road bed. An etched "+" mark was clearly visible on the top, center of the stone. The nail and rebar, both removed during excavation, had been directly above the etched "+" mark. The stone was left in place and a Harrison monument was set over the etched mark.

Corner 2 was excavated on July 16, 2012. Prior to excavation a rebar was found at 7 inches deep. Excavation revealed a stone found at 22 inches deep. The stone was vertical and well embedded in the clay layer below the road bed. With 8 inches of the top of the stone exposed, it measured 9 inches N-W by 5 inches E-W. The stone is substantially east of the township line as the defined by the standard corners. At the time of excavation, Joe Mullins, as official representative of the Hamilton County Surveyor's Office agreed that the final monumentation should be placed on the range line, as defined by the stone at corner 1 and the quarter corners 1/2 mile south, along a prolongation of the line from the quarter corner 1/2 mile east (in Hamilton County) through the found stone. This would have placed the monument 1.0 foot west of the stone, and followed the same procedure as is employed throughout Boone County, of establishing the closing corner on the range line. However, in 2015 the Hamilton County Surveyor's Office set the monument directly over the stone. Hence, as monumented, corner 2 falls approximately 1.0 foot east of the range line.

Corner 1 was originally established as a wood post in 1819. Corner 2 was originally established as a wood post in 1822.

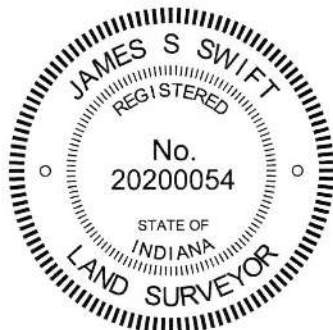


① S.E. Corner, Section 24
N.E. Corner, Section 25
T 19 N, R 2 E

② S.W. Corner, Section 19
N.W. Corner, Section 30
T 19 N, R 3 E

Distance between monuments = 45.2'

Note: The Harrison monument at corner 2 is 1.03' east of the Range line defined by the standard corners to the north and south.



Kenneth E. Hedge
Kenneth E. Hedge, County Surveyor

James S. Swift
James S. Swift, IN LS 20200054
March 24, 2016

Marion
Township
(Boone)

Union
Township
(Boone)

Section 24 T19N, R2E	Section 19 T19N, R3E
Section 25 T19N, R2E	Section 30 T19N, R3E

Boone County
Washington Twp.
Hamilton County

PHOTOGRAPHIC DOCUMENTATION

Date of photography: July 12, 2012

The stone at Corner 1 (Boone County corner) as it was originally exposed.



The stone at Corner 1 more fully exposed.



Close-up of the stone at Corner 1 washed, accentuating the etched + mark.



View from the west, looking across the stone at Corner 1 and east along County Road 200 North.



The stone at Corner 2 (Hamilton County corner) fully exposed.



For details and documentation, refer to related sheet "Section Corner Record."

SECTION CORNER RECORD

NE 250-1100

BOONE COUNTY SURVEYOR'S OFFICE

State Plane grid coordinates NAD83 (CORS96):

North: 1760022.16' East: 3182955.70 (U.S. survey feet)

Type of monument: Harrison, 4" disk 'Section Corner'

Depth: six inches below adjacent gravel road surface

Indiana tie card references:

IN02_T19NR2E23_44

IN02_T19NR2E24_36

CORNER WITNESS DETAIL

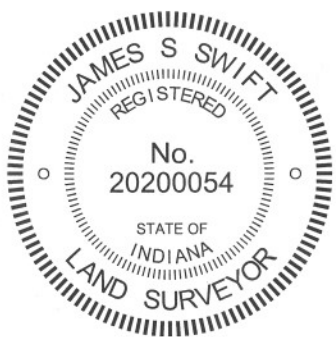
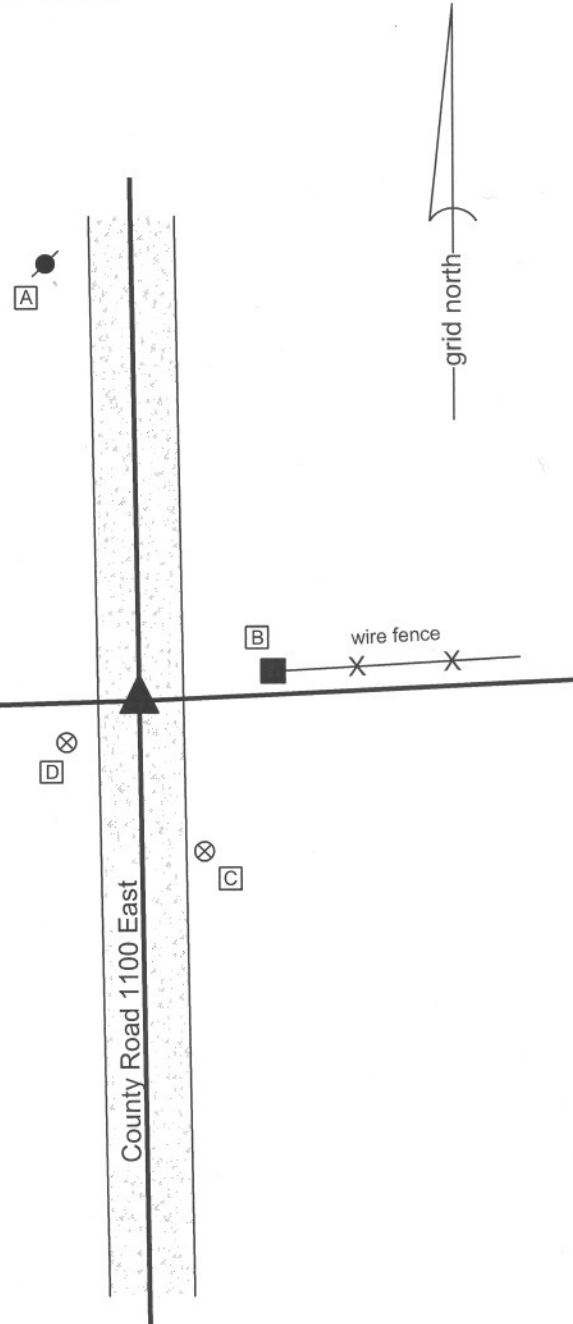
SCALE 1" = 40'



- A - Mag nail set in S. side power pole, 2' a.g., 91.07'
- B - Mag nail set in W. side wood post, 4 in. a.g., 26.00'
- C - Boone County witness mark, flush, 33.94'
- D - Boone County witness mark, flush 17.38'

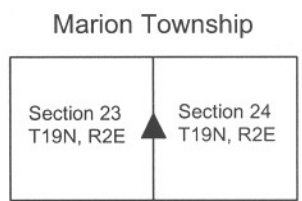
Boone County witness mark is a 3/8" diameter x 2' long rebar bearing a metal cap stamped "Boone County Witness Point."

The harrison monument was set over a stone found.
 A BCS record of September 29, 1879 states "Found from stump of Oak. Set Rock 18,13,7 +." A BCS tie card dated August 5, 1974 states "no stone found."
 This corner was excavated on February 24, 2011. Prior to excavation a 1/2 inch diameter rebar was found at 2 inches below grade. This monument was most likely set in association with the 1974 tie card. Excavation revealed the stone described in the 1879 record at 7 inches deep. The stone measures 18 inches tall by 13 inches N-S by 7 inches E-W. The stone is fully embedded in the clay layer below the road with the top of the stone at the bottom of the road bed. Although the 1879 record calls for a mark on the stone, no specific markings were found. An etched "+" on the top may have been worn off in the past. The stone was left in place and a harrison monument was set over the top, high point of the stone, towards the south edge of the rock. The rebar, removed during excavation, had been 1.9 feet west and 0.6 feet south of the stone.
 This corner was originally established as a wood post in July, 1821.



Kenneth E. Hedge
 Kenneth E. Hedge, County Surveyor

James S. Swift
 James S. Swift, IN LS 20200054
 March 1, 2012, revised April 30, 2012



PHOTOGRAPHIC DOCUMENTATION

Date of photography: February 24, 2011

View of the stone as first exposed.



View of the stone partially exposed.



View of the stone removed from the road.



View of the stone removed from the road.



For details and documentation, refer to related sheet "Section Corner Record."

SECTION CORNER RECORD

BOONE COUNTY SURVEYOR'S OFFICE

NE 250-1200

State Plane grid coordinates NAD83 (NSRS2007):

Corner 1: North: 1760268.33 East: 3188319.63 (U.S. survey feet)

Corner 2: North: 1760231.07 East: 3188319.88 (U.S. survey feet)

Type of monument: Harrison, 4" disk 'Section Corner'

Depth: One inch below adjacent road surface

Indiana tie card references:

IN02_T19NR2E24_44 IN02_T19NR3E19_36

CORNER WITNESS DETAIL

SCALE 1" = 40'

0' 20' 40'

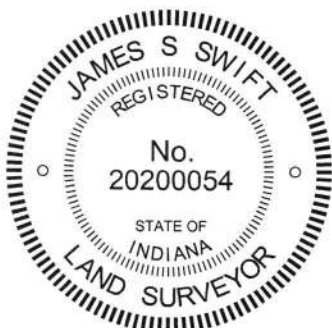
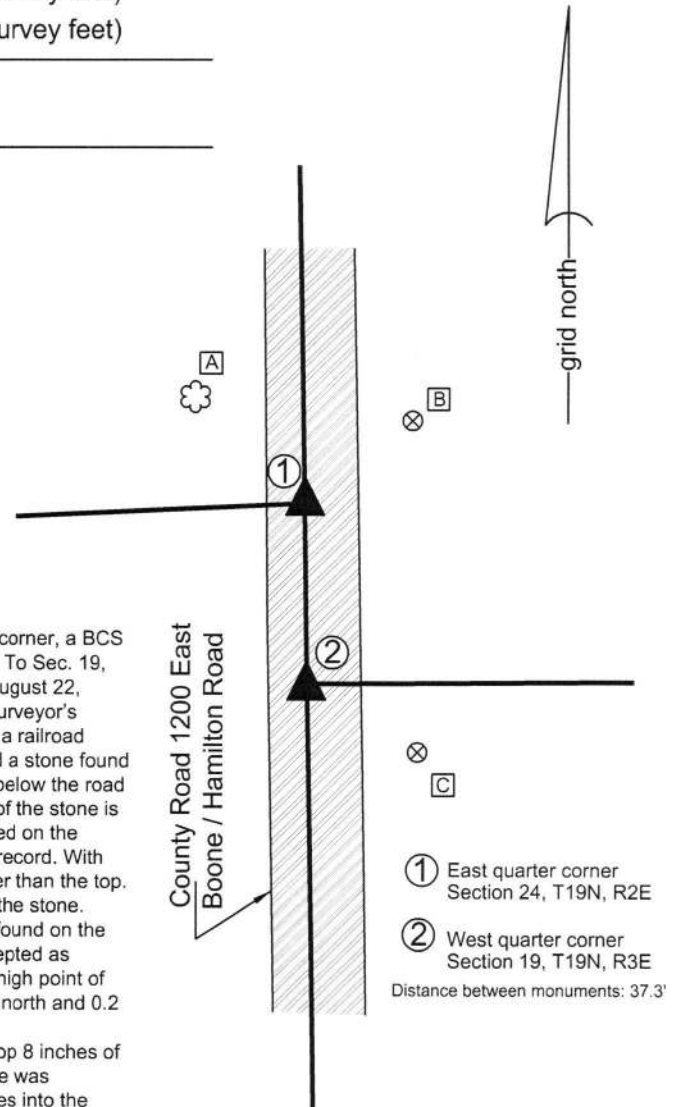
- A - South Edge, 16 inch diameter walnut tree
28.5' to corner 1, 68.0' to corner 2
- B - Boone County witness mark, flush
28.2' to corner 1, 58.7' to corner 2
- C - Boone County witness mark, flush
56.5' to corner 1, 27.2' to corner 2

The Harrison monuments were set over stones found.

With respect to Corner 1, being the standard corner and the Boone County corner, a BCS record dated September 5, 1899 states "Set Rock, 12x12x18+. ¼ Sec. cor. To Sec. 19, T19N, R3E is South 58 links (rock)." These corner were excavated on August 22, 2012. Joe Mullins, PS, and other representatives of the Hamilton County Surveyor's Office were present and participated in the excavation. Prior to excavation, a railroad spike was found in the vicinity of Corner 1. Excavation at Corner 1 revealed a stone found at 19 inches deep. The stone was vertical and embedded in the clay layer below the road bed, with the top of the stone being at the bottom of the road bed. The top of the stone is approximately 8 inches by 8 inches. The full height of the stone was exposed on the south side and found to be 18 inches, matching the description in the 1899 record. With the full height exposed, it was evident that the bottom of the stone was larger than the top. It is expected that the 12x12 dimensions would correlate with the bottom of the stone. These dimensions were not confirmed in the field. No specific marks were found on the stone, nor were any called for in the 1899 descriptions. The stone was accepted as marking the corner and a Harrison monument was set over the top center / high point of the rock. The railroad spike, removed during excavation, had been 1.7 feet north and 0.2 foot east of the point held as marking the corner.

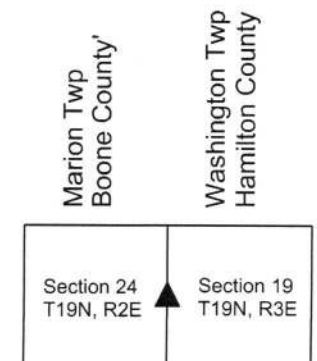
Excavation at Corner 2 revealed a stone found at 8 inches deep. With the top 8 inches of the stone exposed, it measured 12 inches N-S by 10 inches E-W. The stone was embedded in the clay layer below the road, protruding approximately 6 inches into the bottom of the road bed. An etched "x" mark was found on the east side of the stone, 5 inches below the top of the rock. The stone was accepted as marking the corner. A Harrison monument was set over the center of the highest portion of the rock, near the north edge of the stone. It is noted that the Harrison at Corner 2 falls 0.4' west of the range line as defined by the Corner 1 and the standard corner approximately one-half mile south. The distance between the two corners is 37.3 feet, approximately one foot less than the 58 link call from the 1899 record.

Corner 1 was established as a wood post in 1819. Corner 2 is not an original federal corner.



Kenneth E. Hedge
Kenneth E. Hedge, County Surveyor

James S. Swift
James S. Swift, IN LS 20200054
March 23, 2017



PHOTOGRAPHIC DOCUMENTATION

Date of photography: August 22, 2012

The stone at the standard corner (Corner 1)
as it was originally exposed.



The stone at the standard corner (Corner 1),
fully exposed on the south side.



The stone at the closing corner (Corner 2),
substantially exposed.



For details and documentation, refer to
related sheet "Section Corner Record."

SECTION CORNER RECORD

NE 300-1100

BOONE COUNTY SURVEYOR'S OFFICE

State Plane grid coordinates NAD83 (NSRS 2007):

North: 1762667.88 East: 3182916.59 (U.S. survey feet)

Type of monument: Harrison, 4" disk 'Section Corner'

Depth: One inch below adjacent road surface

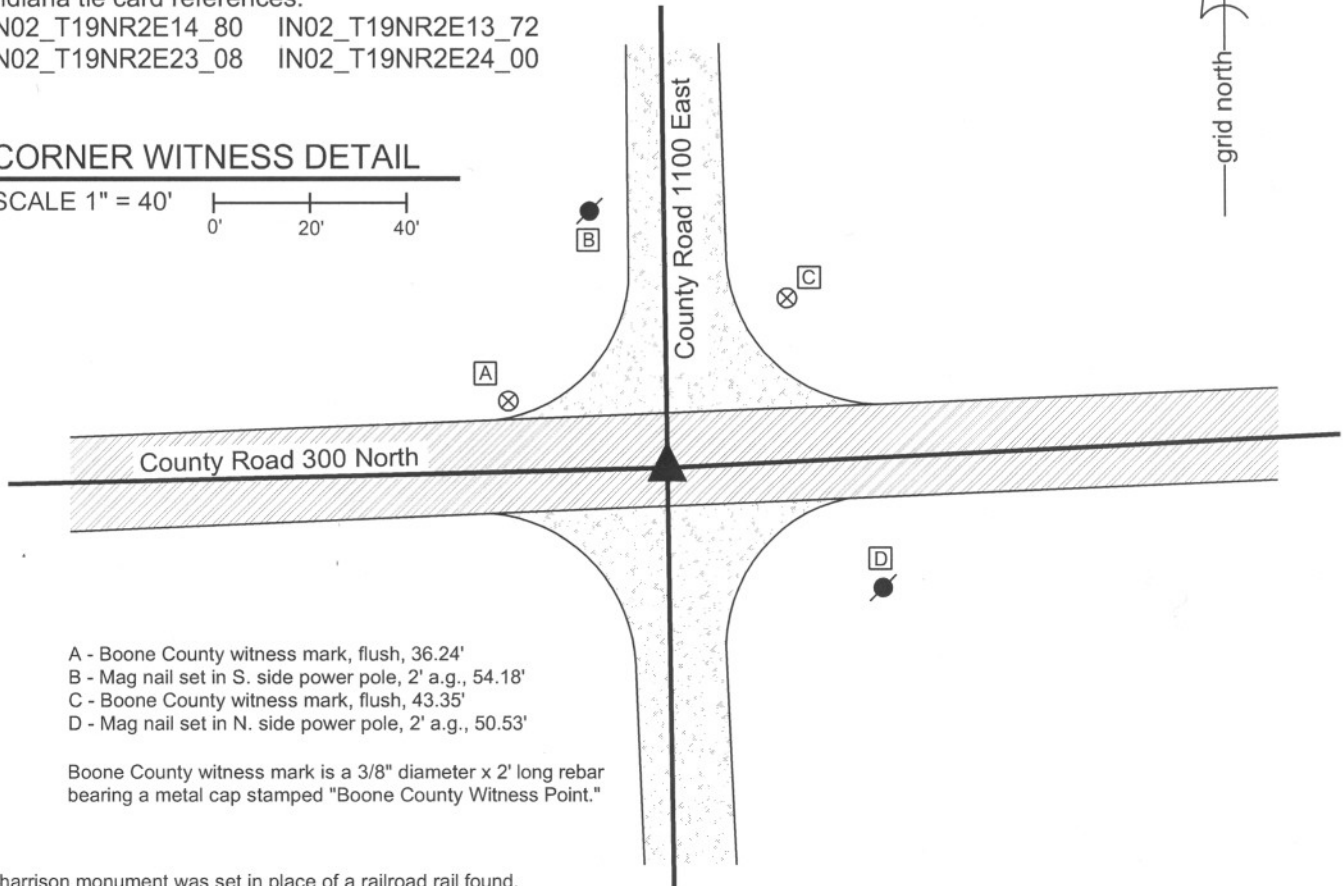
Indiana tie card references:

IN02_T19NR2E14_80 IN02_T19NR2E13_72

IN02_T19NR2E23_08 IN02_T19NR2E24_00

CORNER WITNESS DETAIL

SCALE 1" = 40'



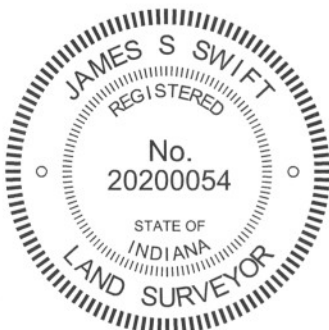
- A - Boone County witness mark, flush, 36.24'
- B - Mag nail set in S. side power pole, 2' a.g., 54.18'
- C - Boone County witness mark, flush, 43.35'
- D - Mag nail set in N. side power pole, 2' a.g., 50.53'

Boone County witness mark is a 3/8" diameter x 2' long rebar bearing a metal cap stamped "Boone County Witness Point."

The Harrison monument was set in place of a railroad rail found.

A BCS record of January 20 & 26, 1900 states "dropped large rock at point." A BCS record of January 17, 1925 states "Rock, found in place (set two more rocks above)." No BCS tie card was found referencing this corner, but field notes from a BCS crew dated June 17, 1974 states "No stone. Found RRR." This corner was excavated on September 3, 2010. Prior to excavation a mag nail was visible in a hole at 2 inches below the surrounding asphalt. Excavation revealed a vertical section of railroad rail at 4 inches deep, below the nail. No other evidence of the corner was found in an area of excavation which extended to 4.5 feet N, 4.5 feet S, 2.5 feet W and 5.0 feet E of the mag and rail. The clay layer below the road begins at 2.5 feet deep. Excavation extended to or into the top of the clay layer. The stones called for in the previous records were not found. It is noted that the rail was found in 1974 but no source information was found pertaining to the establishment of the rail. It is known that the standard procedure of BCS field crews in the late 1960s and early 1970s was to remove a stone or stones, if found, and replace it or them with a vertical section of rail. It is also known that rails were set in that era in the event that no stone was found. The presence of the rail may indicate that the record stones were found, removed and replaced with the rail prior to the 1974 field work, but no record was found to demonstrate this and it is not known whether the rail replaced the stones or was set independently. The Harrison monument was set in the position of the found nail and rail, both removed during excavation.

This corner was originally established as a wood post in June, 1821.



Kenneth E. Hedge
 Kenneth E. Hedge, County Surveyor

James S. Swift
 James S. Swift, IN LS 20200054
 July 25, 2011

Marion Township

Section 14 T19N, R2E	Section 13 T19N, R2E
Section 23 T19N, R2E	Section 24 T19N, R2E

SECTION CORNER RECORD

NE 300-1150

BOONE COUNTY SURVEYOR'S OFFICE

State Plane grid coordinates NAD83 (CORS96):
North: 1762797.40 East: 3185590.49 (U.S. survey feet)

Type of monument: Harrison, 4" disk 'Section Corner'
Depth: One inch below adjacent road surface

Indiana tie card references:
IN02_T19NR2E13_76
IN02_T19NR2E24_04

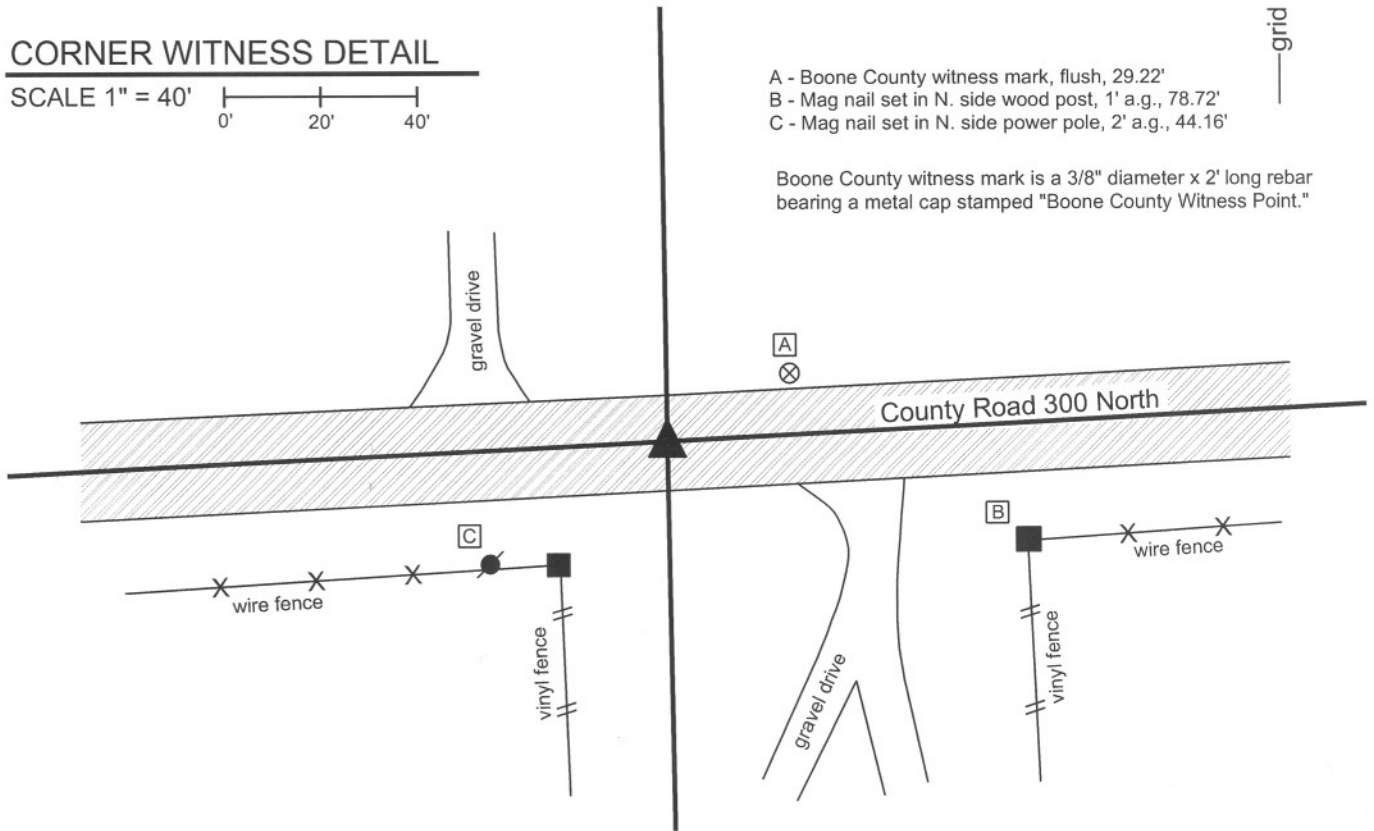


CORNER WITNESS DETAIL

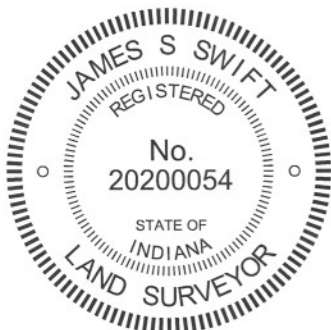
SCALE 1" = 40'

- A - Boone County witness mark, flush, 29.22'
- B - Mag nail set in N. side wood post, 1' a.g., 78.72'
- C - Mag nail set in N. side power pole, 2' a.g., 44.16'

Boone County witness mark is a 3/8" diameter x 2' long rebar bearing a metal cap stamped "Boone County Witness Point."



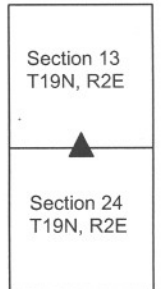
The harrison monument was set in place of a stone found.
No specific descriptions of this corner were found in the BCS Surveyor's Record. It is noted as the terminal point for measurements in 1836. A BCS tie card which is neither dated nor attributed to an author or field crew shows the corner as a railroad spike with no documentation of source. Although the tie card is not dated, it is similar in appearance to other tie cards created in 1994.
This corner was excavated on October 26, 2011. Prior to excavation a railroad spike was found at 1 inch deep in a hole in the asphalt. Excavation revealed a stone found at 7 inches deep. The stone was 7 inches E-W by 6 inches N-S by 9 inches tall. The bottom 3 inches of the stone were embedded in the clay layer below the road. No specific marks were found on the stone. The stone was accepted as the oldest and best available evidence of the corner. The stone was removed and replaced with a harrison monument set in the position of the top, high point of the stone. The railroad spike, removed during excavation had been 2.5 feet north and 1.0 foot east of the stone. It is noted that the railroad spike was north of the physical center of the road, whereas the stone was in the center and its position fit with the center of the road extended to the East and West.
This corner was originally established as a wood post in July, 1821.



Kenneth E. Hedge
Kenneth E. Hedge, County Surveyor

James S. Swift
James S. Swift, IN LS 20200054
March 1, 2012

Marion Twp



PHOTOGRAPHIC DOCUMENTATION

Date of photography: October 26, 2011

View of the stone as found.



View of the stone as found.



The hole from which the stone was removed, demonstrating that the stone was embedded in the clay layer below the road bed.



The stone as removed from the road bed.



For details and documentation, refer to related sheet "Section Corner Record."

SECTION CORNER RECORD

BOONE COUNTY SURVEYOR'S OFFICE

NE 300-1200

State Plane grid coordinates NAD83 (CORS96):

CORNER 1: North: 1762932.69 East: 3188273.78 (U.S. survey feet)

CORNER 2: North: 1762894.95 East: 3188273.67 (U.S. survey feet)

Type of monument: Harrison, 4" disk 'Section Corner'

Depth: One inch below adjacent road surface

Indiana tie card references:

IN02_T19NR2E13_80 IN02_T19NR3E18_72

IN02_T19NR2E24_08 IN02_T19NR3E19_00

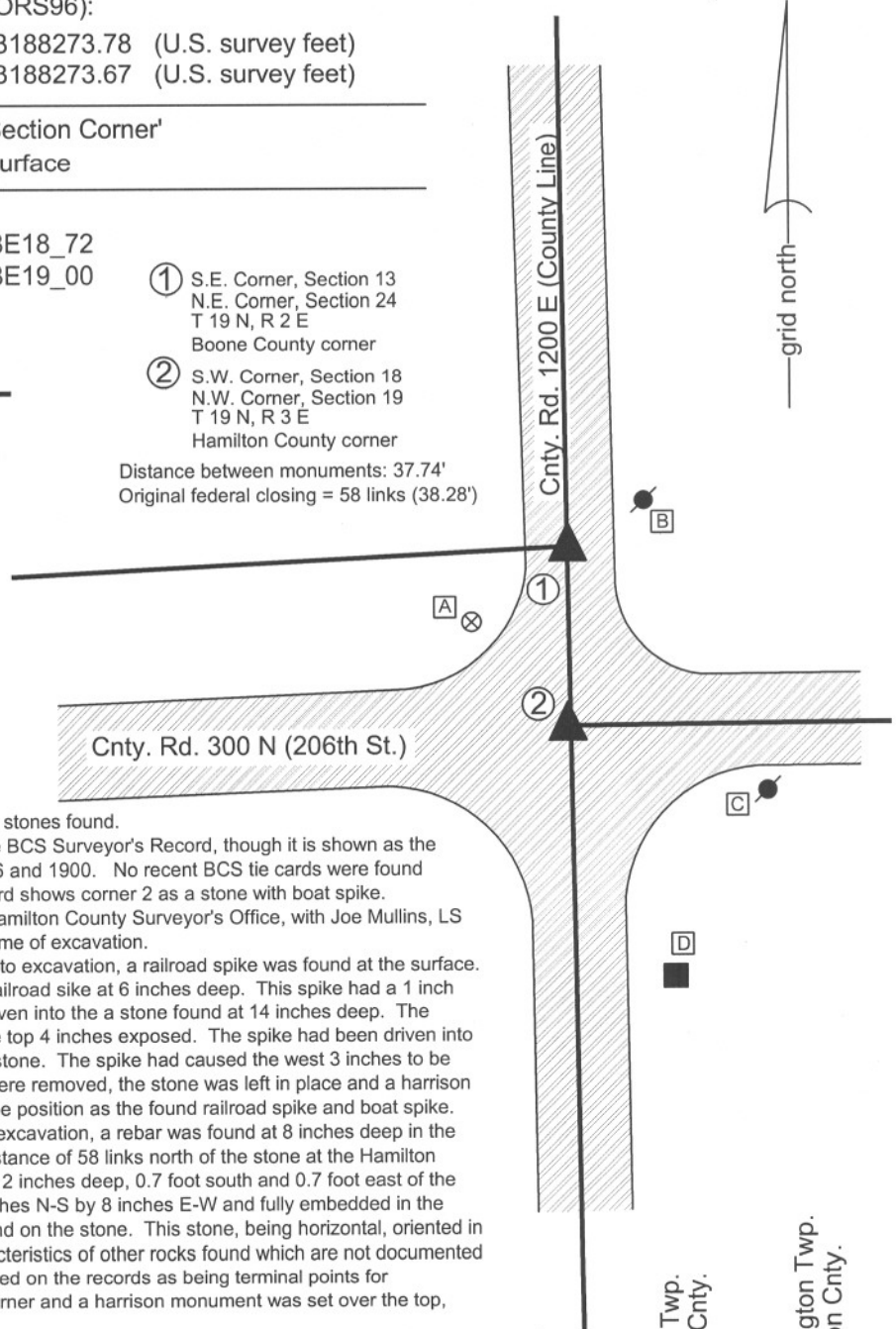
CORNER WITNESS DETAIL

SCALE 1" = 40'

- A - Boone County witness mark, flush, 25.78' to corner 1, 29.43' to corner 2
- B - Mag nail in NW side power pole, 1.5 a.g., 17.95' to corner 1, 50.37' to corner 2
- C - Mag nail in N. side power pole, 1.8' a.g., 65.37' to corner 1, 44.27' to corner 2
- D - Mag nail in NE corner, wood sign post 91.50' to corner 1, 56.12' to corner 2

- ① S.E. Corner, Section 13
N.E. Corner, Section 24
T 19 N, R 2 E
Boone County corner
- ② S.W. Corner, Section 18
N.W. Corner, Section 19
T 19 N, R 3 E
Hamilton County corner

Distance between monuments: 37.74'
Original federal closing = 58 links (38.28')

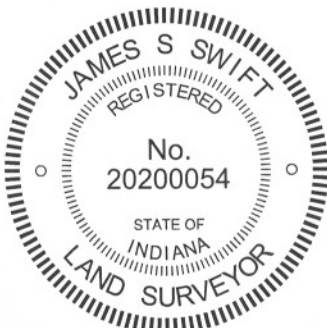


The harrison monuments at both corners were set over stones found.

No specific descriptions of this corner were found in the BCS Surveyor's Record, though it is shown as the terminal point for measurements on records dated 1836 and 1900. No recent BCS tie cards were found referencing this corner. A 1981 Hamilton County tie card shows corner 2 as a stone with boat spike. Both corners were excavated in cooperation with the Hamilton County Surveyor's Office, with Joe Mullins, LS and other representatives of that office present at the time of excavation.

Corner 2 was excavated first, on July 12, 2012. Prior to excavation, a railroad spike was found at the surface. Excavation revealed a "boat spike" directly below the railroad sike at 6 inches deep. This spike had a 1 inch diameter shaft, 27 inches long. The shaft had been driven into the a stone found at 14 inches deep. The stone measures 9 inches E-W by 7 inches N-S with the top 4 inches exposed. The spike had been driven into the high point of the stone, near the west edge of the stone. The spike had caused the west 3 inches to be split off from the main body of the stone. The spikes were removed, the stone was left in place and a harrison monument was set over the top of the stone in the same position as the found railroad spike and boat spike. Corner 1 was excavated on August 20, 2012. Prior to excavation, a rebar was found at 8 inches deep in the roadway at approximately the record federal closing distance of 58 links north of the stone at the Hamilton County corner. Excavation revealed a stone found at 12 inches deep, 0.7 foot south and 0.7 foot east of the rebar. The stone was found to be 5 inches tall by 8 inches N-S by 8 inches E-W and fully embedded in the clay layer below the road. No specific marks were found on the stone. This stone, being horizontal, oriented in cardinal directions and not marked, matches the characteristics of other rocks found which are not documented as having been set by the County Surveyor but are noted on the records as being terminal points for measurements. The stone was held as marking the corner and a harrison monument was set over the top, center of the stone.

The stone at the closing corner (Hamilton County corner) is slightly west of the range line as defined by the stones at the standard corners.



Kenneth E. Hedge
Kenneth E. Hedge, County Surveyor

James S. Swift
James S. Swift, IN LS 20200054
January 15, 2013

Section 13 T19N, R2E	Section 18 T19N, R3E
Section 24 T19N, R2E	Section 19 T19N, R3E

Marion Twp.
Boone Cnty.

Washington Twp.
Hamilton Cnty.

PHOTOGRAPHIC DOCUMENTATION

Date of photography: July 12 & August 20, 2012

View of the stone at at the Boone County corner (corner 1) as first exposed.



The top of the boat spike found driven into the stone at the Hamilton County corner (corner 2).



The stone at corner 1.



The stone at corner 2, broken due to the fact that the boat spike shown above had been driven into it.



The stone at corner 1.



The stone at corner 2.



For details and documentation, refer to related sheet "Section Corner Record."