

SECTION CORNER RECORD

BOONE COUNTY SURVEYOR'S OFFICE


NE 200-500

State Plane grid coordinates NAD83 (CORS96):
 North: 1756487.56 East: 3150955.66 (U.S. survey feet)

Type of monument: Harrison, 4" disk 'Section Corner'
 Depth: One inch below adjacent road surface

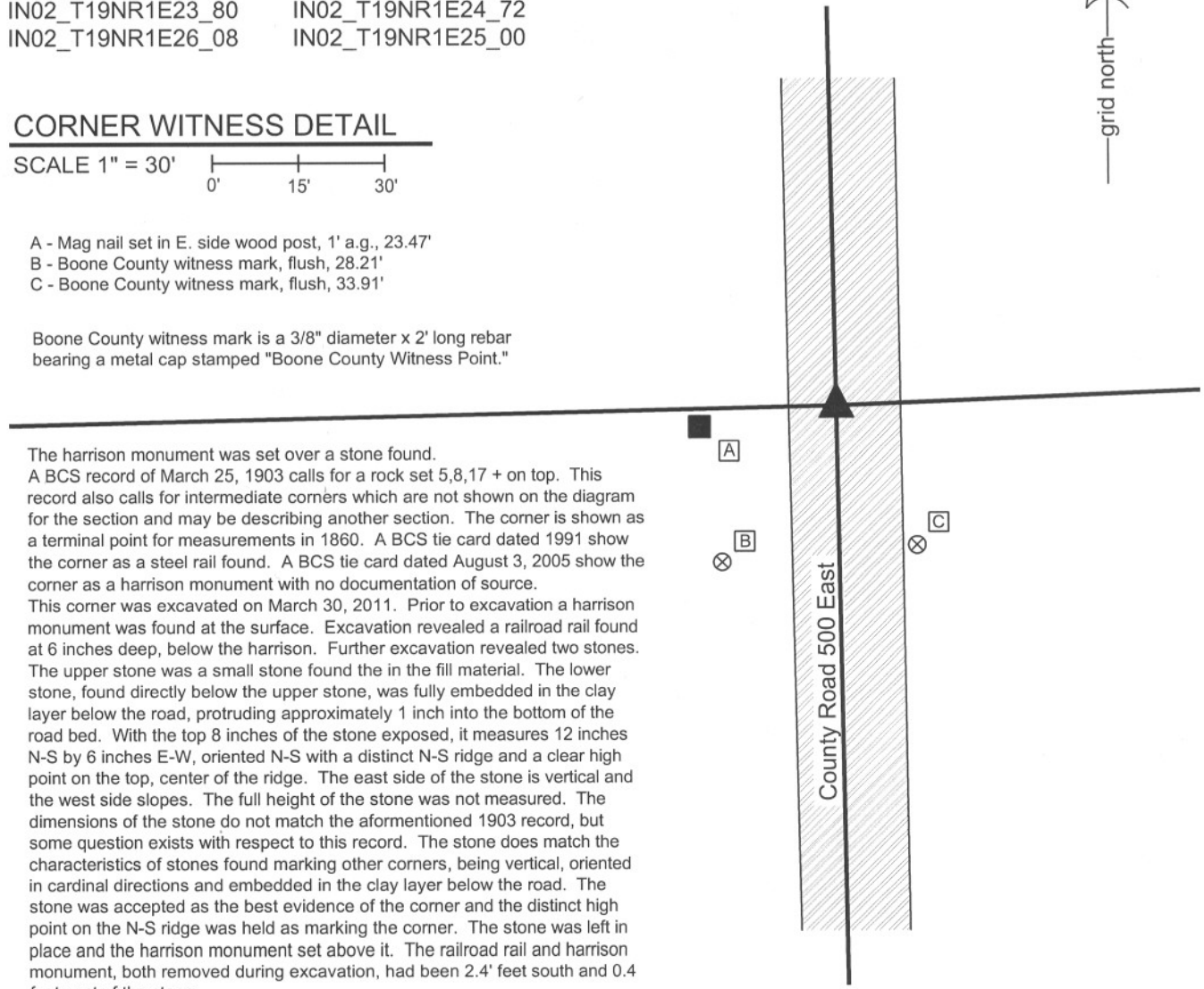
Indiana tie card references:
 IN02_T19NR1E23_80 IN02_T19NR1E24_72
 IN02_T19NR1E26_08 IN02_T19NR1E25_00

CORNER WITNESS DETAIL

SCALE 1" = 30' 

- A - Mag nail set in E. side wood post, 1' a.g., 23.47'
- B - Boone County witness mark, flush, 28.21'
- C - Boone County witness mark, flush, 33.91'

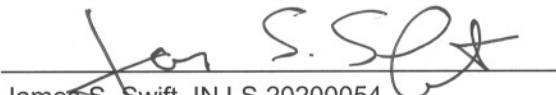
Boone County witness mark is a 3/8" diameter x 2' long rebar bearing a metal cap stamped "Boone County Witness Point."



The harrison monument was set over a stone found.
 A BCS record of March 25, 1903 calls for a rock set 5,8,17 + on top. This record also calls for intermediate corners which are not shown on the diagram for the section and may be describing another section. The corner is shown as a terminal point for measurements in 1860. A BCS tie card dated 1991 show the corner as a steel rail found. A BCS tie card dated August 3, 2005 show the corner as a harrison monument with no documentation of source.
 This corner was excavated on March 30, 2011. Prior to excavation a harrison monument was found at the surface. Excavation revealed a railroad rail found at 6 inches deep, below the harrison. Further excavation revealed two stones. The upper stone was a small stone found the in the fill material. The lower stone, found directly below the upper stone, was fully embedded in the clay layer below the road, protruding approximately 1 inch into the bottom of the road bed. With the top 8 inches of the stone exposed, it measures 12 inches N-S by 6 inches E-W, oriented N-S with a distinct N-S ridge and a clear high point on the top, center of the ridge. The east side of the stone is vertical and the west side slopes. The full height of the stone was not measured. The dimensions of the stone do not match the aforementioned 1903 record, but some question exists with respect to this record. The stone does match the characteristics of stones found marking other corners, being vertical, oriented in cardinal directions and embedded in the clay layer below the road. The stone was accepted as the best evidence of the corner and the distinct high point on the N-S ridge was held as marking the corner. The stone was left in place and the harrison monument set above it. The railroad rail and harrison monument, both removed during excavation, had been 2.4' feet south and 0.4 foot east of the stone.
 This corner was originally established as a wood post in June, 1822.




 Kenneth E. Hedge, County Surveyor


 James S. Swift, IN LS 20200054
 March 1, 2012

Center Township

Section 23 T19N, R1E	Section 24 T19N, R1E
Section 26 T19N, R1E	Section 25 T19N, R1E

PHOTOGRAPHIC DOCUMENTATION

Date of photography: March 30, 2011

View of the stone as first exposed. The small rock found in the fill is on the asphalt to the right.



View of the stone from above and west.



View from above the stone looking south along County Road 500 East.



View of the stone from above and south.



For details and documentation, refer to related sheet "Section Corner Record."

SECTION CORNER RECORD

BOONE COUNTY SURVEYOR'S OFFICE

NE 200-600

State Plane grid coordinates NAD83 (2011):

Corner 1: North: 1756692.87 East: 3156302.52 (U.S. survey feet)

Corner 2: North: 1756656.10 East: 3156305.08 (U.S. survey feet)

Type of monument: Harrison, 4" disk 'Section Corner'

Depth: Flush with adjacent road surface

Indiana tie card references: IN02_T19NR1E24_80 IN02_T19NR2E19_72
IN02_T19NR1E25_08 IN02_T19NR2E30_00

CORNER WITNESS DETAIL

SCALE 1" = 30'

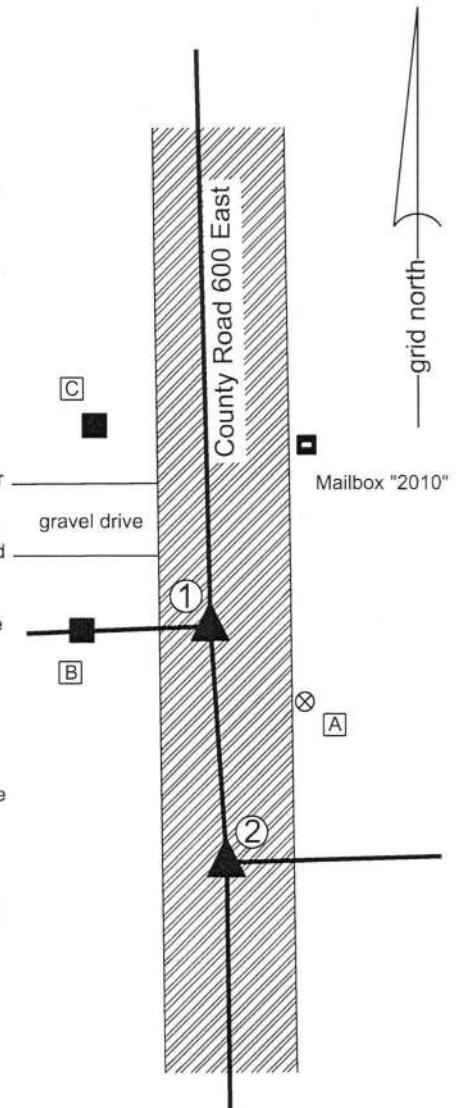
The Harrison Monument at Corner 1 was set over a stone found and the Harrison Monument at Corner 2 was set in place of a stone found and a Harrison Monument found.

A BCS record of November 8, 1871 states, with respect to Corner 2, "Reestab from stump of one tree. Set a Rock 8.5.4 +." A BCS record of March 20, 1873 states, with respect to Corner 1, "Reestablished from Oak tree, set a Rock 18.12.7 +." BCS tie cards of July 28, 2005 show both corners as Harrison monuments with no documentation of source.

Corner 1 was excavated on May 24, 2010. Prior to excavation, a Harrison monument was found at the surface of the road per the 2005 tie card. Excavation revealed the stone described in the 1873 record at 8 inches deep. The stone was found to be vertical, embedded in the clay layer below the road bed and protruding approximately 6 inches into the bottom of the road bed. With the top 12 inches of the stone exposed, it measured 12 inches E-W by 7 inches N-S with a protrusion on the south side which extended the N-S dimension to 8 inches at the protrusion. The north side of the stone was flat and vertical. No specific marks were found. The stone was in line with the fence to the west. The stone was accepted as being the same monument described in the 1873 record and was held as marking the corner. The stone was left in place, the top of the stone was encased in concrete and a Harrison monument was set over the top, center of the stone. The Harrison monument, removed during excavation, had been 0.2 foot north and 2.1 feet east of the top, center of the stone.

Corner 2 was excavated on May 18, 2018. Prior to excavation, the Harrison monument shown on the 2005 tie card as marking the corner was found flush with the surface of the road. Excavation revealed the stone described in the 1871 record found at 18 inches deep, directly below the found Harrison monument. The stone was of a rectangular shape with evidently cut sides. The stone measured 8 inches tall by 6 inches N-S by 3 inches E-W. The stone was fully embedded in the clay layer below the road bed, situated vertically with a distinct high point. An etched "+" mark was found on the sloping top, south side of the stone. The stone was accepted as being the same monument as described in the 1871 record.

It is noted that the stone at Corner 2 falls 2.1 feet east of a straight line connecting the stone found at Corner 1 and the standard corner one-half mile south (see Corner NE 150-600). The standard procedure adhered to by this office is to endeavor to establish closing corners on the range line as defined by the relevant standard corners, if sufficient evidence is available to firmly establish the range line as connecting the standard corners. However, at this set of corners it is clearly evident that the two adjacent corners were monumented in 1871 and 1873 in positions which are not in harmony in the east-west dimension. It is further noted that both corners were perpetuated from older evidence in the form of an original bearing tree and roots of an original bearing tree. It is also noted that the stones found at the respective corners are separated by almost exactly the original closing distance of 56 links. It is observed that any error in the establishment of the corners by radial tie distances from the bearing trees in 1871 and 1873 would likely result in a variation in the distance separation between the corners. Given that the distance between the two corners is close to the original closing distance of 56 links, it appears that perhaps the closing corner was originally established east of the longer range line. If this is the case, it would follow that a jog may have been established in the range line as early as 1821 when the closing corner was originally set. The stones found marking the two corners were both held and Harrison monuments were set above (Corner 1) or in place of (Corner 2) and it is accepted that the line between Ranges 1 East and 2 East jogs between Corner 1 and Corner 2.



- ① S.E. Corner, Section 24
N.E. Corner, Section 25
T 19 N, R 1 E
- ② S.W. Corner, Section 19
N.W. Corner, Section 30
T 19 N, R 2 E

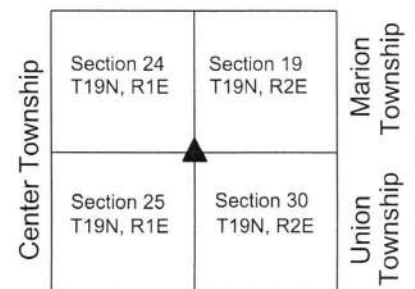
Distance between monuments: 36.86'
Original closing distance: 56 links (37')

- A - Boone County witness mark, flush, 19.0' to Corner 1, 27.9' to Corner 2
- B - Mag Nail set in E. side wood post, 2' a.g. 19.0' to Corner 1, 41.9' to Corner 2
- C - Mag nail set in E. side wood post, 1' a.g. 35.5' to Corner 1, 70.8' to Corner 2



Kenneth E. Hedge
Kenneth E. Hedge, County Surveyor

James S. Swift
James S. Swift, IN LS 20200054
August 1, 2018



SECTION CORNER RECORD

NE 250-500

BOONE COUNTY SURVEYOR'S OFFICE

State Plane grid coordinates NAD83 (CORS96):

North: 1759135.50 East: 3150904.29 (U.S. survey feet)

Type of monument: Harrison, 4" disk 'Section Corner'

Depth: One inch below adjacent road surface

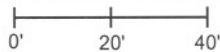
Indiana tie card references:

IN02_T19NR1E23_44

IN02_T19NR1E24_36

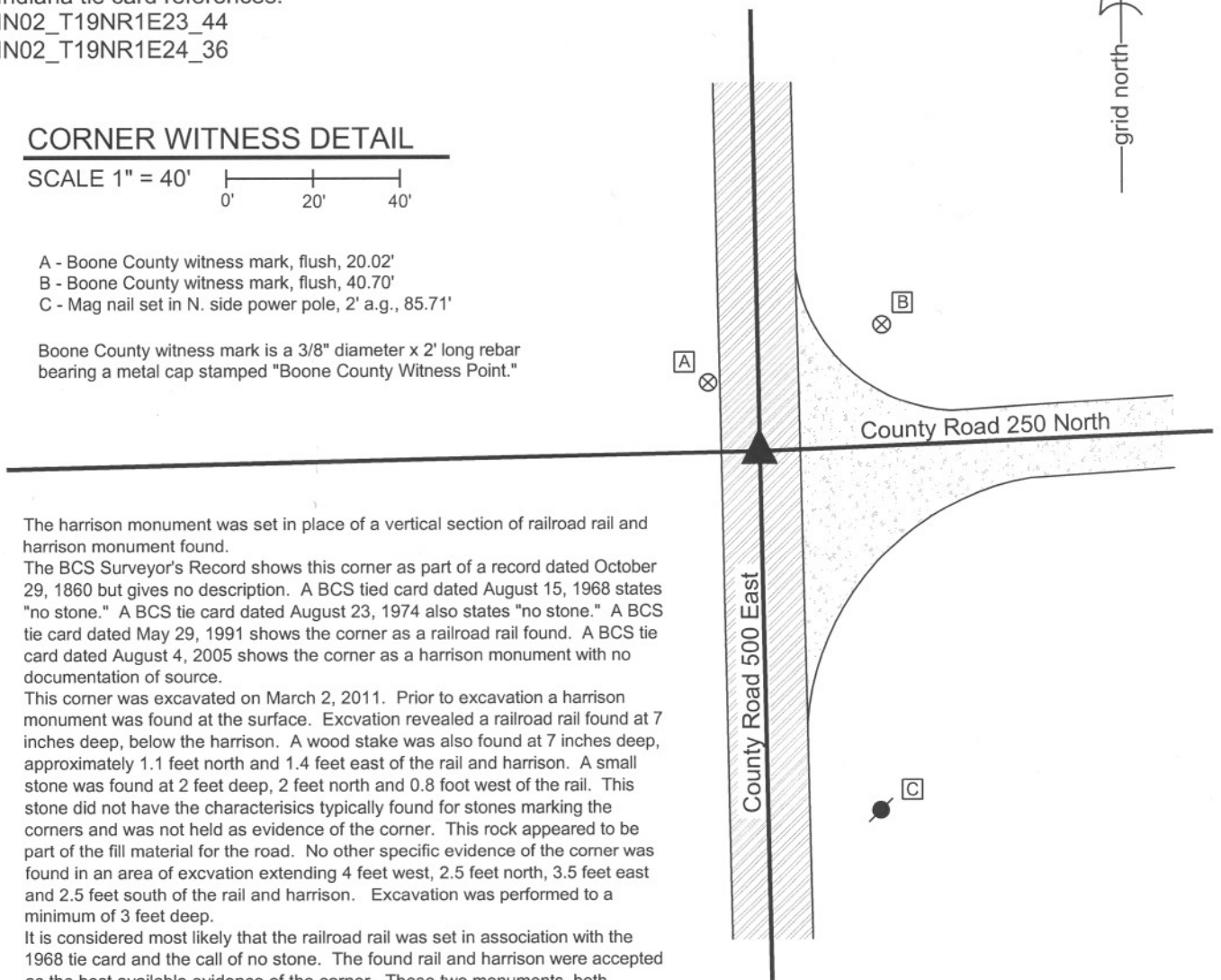
CORNER WITNESS DETAIL

SCALE 1" = 40'



- A - Boone County witness mark, flush, 20.02'
- B - Boone County witness mark, flush, 40.70'
- C - Mag nail set in N. side power pole, 2' a.g., 85.71'

Boone County witness mark is a 3/8" diameter x 2' long rebar bearing a metal cap stamped "Boone County Witness Point."



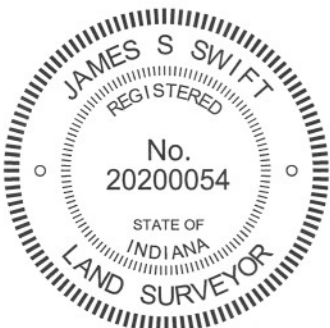
The harrison monument was set in place of a vertical section of railroad rail and harrison monument found.

The BCS Surveyor's Record shows this corner as part of a record dated October 29, 1860 but gives no description. A BCS tied card dated August 15, 1968 states "no stone." A BCS tie card dated August 23, 1974 also states "no stone." A BCS tie card dated May 29, 1991 shows the corner as a railroad rail found. A BCS tie card dated August 4, 2005 shows the corner as a harrison monument with no documentation of source.

This corner was excavated on March 2, 2011. Prior to excavation a harrison monument was found at the surface. Excavation revealed a railroad rail found at 7 inches deep, below the harrison. A wood stake was also found at 7 inches deep, approximately 1.1 feet north and 1.4 feet east of the rail and harrison. A small stone was found at 2 feet deep, 2 feet north and 0.8 foot west of the rail. This stone did not have the characteristics typically found for stones marking the corners and was not held as evidence of the corner. This rock appeared to be part of the fill material for the road. No other specific evidence of the corner was found in an area of excavation extending 4 feet west, 2.5 feet north, 3.5 feet east and 2.5 feet south of the rail and harrison. Excavation was performed to a minimum of 3 feet deep.

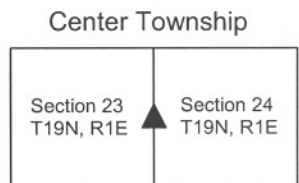
It is considered most likely that the railroad rail was set in association with the 1968 tie card and the call of no stone. The found rail and harrison were accepted as the best available evidence of the corner. These two monuments, both removed during excavation, were replaced with a new harrison monument set at the same position.

This corner was originally established as a wood post in June, 1822.



Kenneth E. Hedge
 Kenneth E. Hedge, County Surveyor

James S. Swift
 James S. Swift, IN LS 20200054
 March 1, 2012



SECTION CORNER RECORD

BOONE COUNTY SURVEYOR'S OFFICE

NE 250-600

State Plane grid coordinates NAD83 (NSRS 2007):

Corner 1: North: 1759350.20 East: 3156238.64 (U.S. survey feet)

Corner 2: North: 1759309.95 East: 3156239.61 (U.S. survey feet)

Corner 1 & 2:

Type of monument: Harrison, 4" disk 'Section Corner'

Depth: One inch below adjacent road surface

Indiana tie card references: IN02_T19NR2E19_36
IN02_T19NR1E24_44

A - Boone County witness mark, flush,
47.98' to corner 1, 83.47' to corner 2.

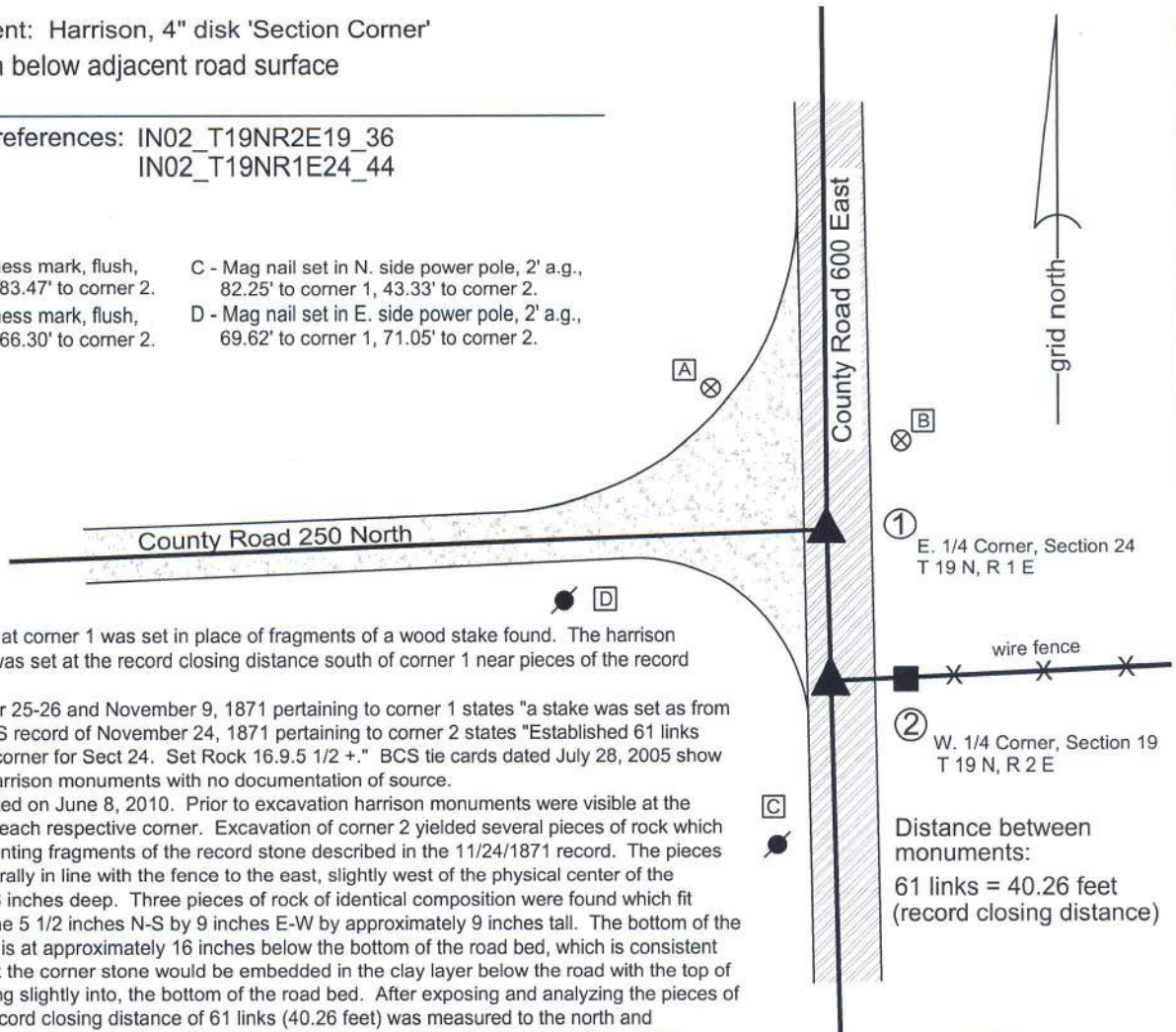
C - Mag nail set in N. side power pole, 2' a.g.,
82.25' to corner 1, 43.33' to corner 2.

B - Boone County witness mark, flush,
30.54' to corner 1, 66.30' to corner 2.

D - Mag nail set in E. side power pole, 2' a.g.,
69.62' to corner 1, 71.05' to corner 2.

CORNER WITNESS DETAIL

SCALE 1" = 50'



① E. 1/4 Corner, Section 24
T 19 N, R 1 E

② W. 1/4 Corner, Section 19
T 19 N, R 2 E

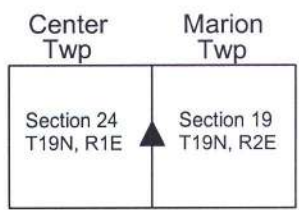
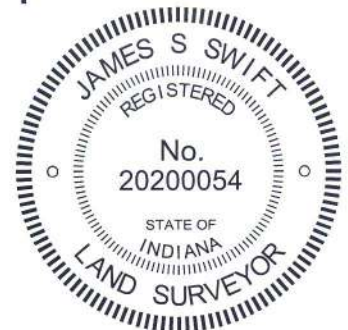
Distance between monuments:
61 links = 40.26 feet
(record closing distance)

The harrison monument at corner 1 was set in place of fragments of a wood stake found. The harrison monument at corner 2 was set at the record closing distance south of corner 1 near pieces of the record stone found.

A BCS record of October 25-26 and November 9, 1871 pertaining to corner 1 states "a stake was set as from stump of walnut." A BCS record of November 24, 1871 pertaining to corner 2 states "Established 61 links south of the qtr section corner for Sect 24. Set Rock 16.9.5 1/2 +." BCS tie cards dated July 28, 2005 show both corners as being harrison monuments with no documentation of source.

This corner was excavated on June 8, 2010. Prior to excavation harrison monuments were visible at the surface in the vicinity of each respective corner. Excavation of corner 2 yielded several pieces of rock which are accepted as representing fragments of the record stone described in the 11/24/1871 record. The pieces of rock were found generally in line with the fence to the east, slightly west of the physical center of the roadway beginning at 26 inches deep. Three pieces of rock of identical composition were found which fit together to create a stone 5 1/2 inches N-S by 9 inches E-W by approximately 9 inches tall. The bottom of the lower piece of the stone is at approximately 16 inches below the bottom of the road bed, which is consistent with the expectation that the corner stone would be embedded in the clay layer below the road with the top of the stone at, or protruding slightly into, the bottom of the road bed. After exposing and analyzing the pieces of stone at corner 2, the record closing distance of 61 links (40.26 feet) was measured to the north and excavation was performed at corner 1. The 1871 record calls for a stake set at this corner. Excavation revealed evidence of the stake in the form of pieces of wood in the clay layer below the road, beginning at the top of the clay layer (26 inches deep) to approximately 5 inches below that. The position of the fragments of wood fit very well with the record distance from the pieces of rock found at corner 2 and the fragments were accepted as representing the "stake" set in 1871. It is noted that wood stakes from that era have been found in the sub-surface clay at other corners and those stakes have been in similar condition to what was found at this corner. The evidence of the monuments from 1871, which fit relative to each other and also fit with the evidence of occupation to the east at corner 2 (fence) and the road to the west at corner 1, were held as marking the position of the corners. A harrison monument was set in the position of the fragments of the stake marking corner 1. A harrison monument was set at the record closing distance south of corner 1 on the line connecting corner 1 with the standard corner to the south, in the approximate position of the pieces of rock found at that corner. The harrison monuments which were present prior to excavation were 0.9 foot east and 2.8 feet north of monuments set after excavation. No other evidence was found below the previously existing harrisons.

Corner 1 was originally established as a wood post in 1819. Corner 2 was not monumented during the original federal survey.



Kenneth E. Hedge
Kenneth E. Hedge, County Surveyor

James S. Swift
James S. Swift, IN LS 20200054
July 25, 2011, Revised February 6, 2013

PHOTOGRAPHIC DOCUMENTATION

Date of photography: June 8, 2010

Pieces of wood and the associated discoloration from the "stake" at the standard corner (corner 1).



View of the fragments of the closing corner (corner 2) stone as first exposed.



Pieces of wood from the "stake" shown as found at the base of the road bed (corner 1).



View of the fragments of the closing corner (corner 2) stone from above



Pieces of wood from the 1871 "stake" removed from the of the road bed, with scale (corner 1).



The three fragments of the stone pieced together. This represents the bottom of the record stone and is shown upside down in this picture.



For details and documentation, refer to related sheet "Section Corner Record."

SECTION CORNER RECORD

NE 300-500

BOONE COUNTY SURVEYOR'S OFFICE

State Plane grid coordinates NAD83 (CORS96):

North: 1761778.18 East: 3150857.57 (U.S. survey feet)

Type of monument: Harrison, 4" disk 'Section Corner'

Depth: One inch below adjacent road surface

Indiana tie card references:

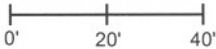
IN02_T19NR1E13_72

IN02_T19NR1E14_80

IN02_T19NR1E24_00

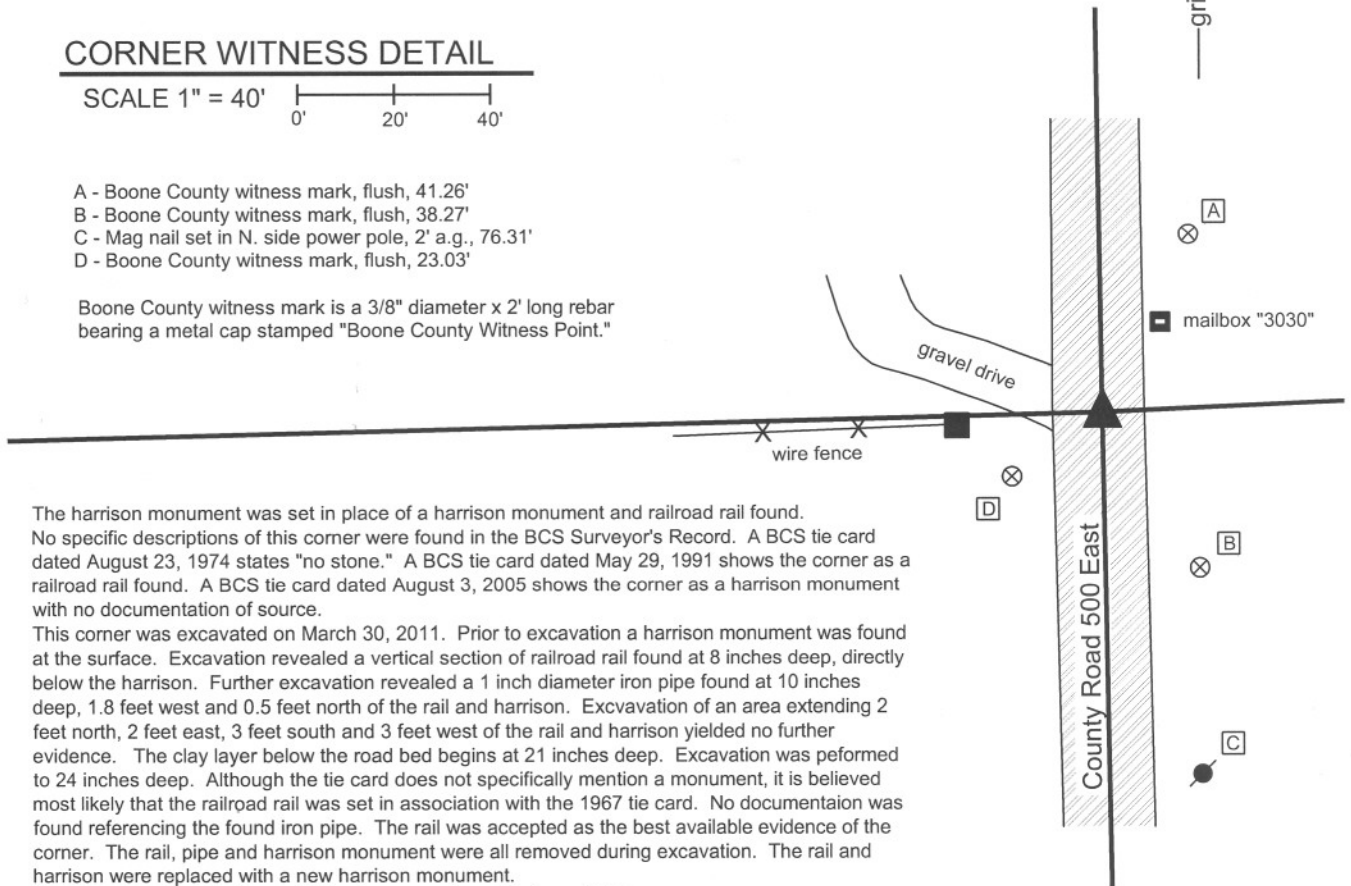
IN02_T19NR1E23_08

CORNER WITNESS DETAIL

SCALE 1" = 40' 

- A - Boone County witness mark, flush, 41.26'
- B - Boone County witness mark, flush, 38.27'
- C - Mag nail set in N. side power pole, 2' a.g., 76.31'
- D - Boone County witness mark, flush, 23.03'

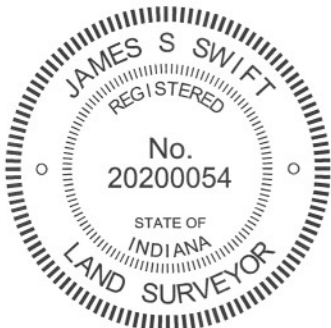
Boone County witness mark is a 3/8" diameter x 2' long rebar bearing a metal cap stamped "Boone County Witness Point."



The harrison monument was set in place of a harrison monument and railroad rail found. No specific descriptions of this corner were found in the BCS Surveyor's Record. A BCS tie card dated August 23, 1974 states "no stone." A BCS tie card dated May 29, 1991 shows the corner as a railroad rail found. A BCS tie card dated August 3, 2005 shows the corner as a harrison monument with no documentation of source.

This corner was excavated on March 30, 2011. Prior to excavation a harrison monument was found at the surface. Excavation revealed a vertical section of railroad rail found at 8 inches deep, directly below the harrison. Further excavation revealed a 1 inch diameter iron pipe found at 10 inches deep, 1.8 feet west and 0.5 feet north of the rail and harrison. Excavation of an area extending 2 feet north, 2 feet east, 3 feet south and 3 feet west of the rail and harrison yielded no further evidence. The clay layer below the road bed begins at 21 inches deep. Excavation was performed to 24 inches deep. Although the tie card does not specifically mention a monument, it is believed most likely that the railroad rail was set in association with the 1967 tie card. No documentation was found referencing the found iron pipe. The rail was accepted as the best available evidence of the corner. The rail, pipe and harrison monument were all removed during excavation. The rail and harrison were replaced with a new harrison monument.

This corner was originally established as a wood post in June, 1822.




 Kenneth E. Hedge, County Surveyor


 James S. Swift, IN LS 20200054
 March 1, 2012

Center Township

Section 14 T19N, R1E	Section 13 T19N, R1E
Section 23 T19N, R1E	Section 24 T19N, R1E

An arrow points upwards from the center of the bottom two sections (23 and 24) towards the top two sections (14 and 13).

SECTION CORNER RECORD

NE 300-550

BOONE COUNTY SURVEYOR'S OFFICE

State Plane grid coordinates NAD83 (CORS96):

North: 1761895.52 East: 3153535.34 (U.S. survey feet)

Type of monument: Harrison, 4" disk 'Section Corner'

Depth: six inches below adjacent gravel road surface

Indiana tie card references:

IN02_T19NR1E13_76

IN02_T19NR1E24_04

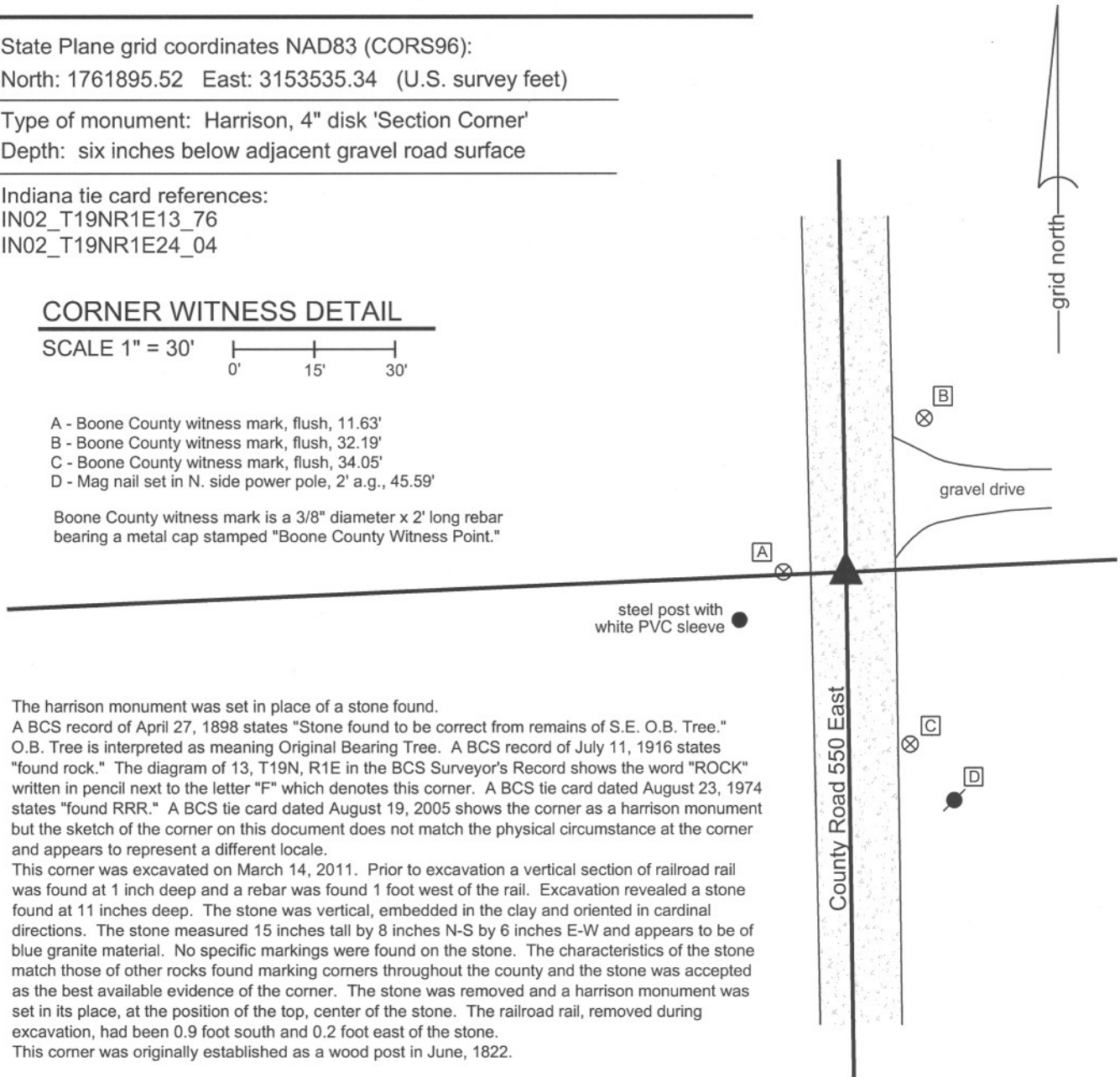
CORNER WITNESS DETAIL

SCALE 1" = 30'



- A - Boone County witness mark, flush, 11.63'
- B - Boone County witness mark, flush, 32.19'
- C - Boone County witness mark, flush, 34.05'
- D - Mag nail set in N. side power pole, 2' a.g., 45.59'

Boone County witness mark is a 3/8" diameter x 2' long rebar bearing a metal cap stamped "Boone County Witness Point."

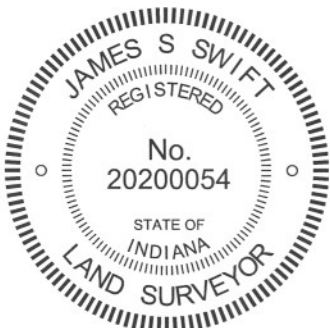


The harrison monument was set in place of a stone found.

A BCS record of April 27, 1898 states "Stone found to be correct from remains of S.E. O.B. Tree." O.B. Tree is interpreted as meaning Original Bearing Tree. A BCS record of July 11, 1916 states "found rock." The diagram of 13, T19N, R1E in the BCS Surveyor's Record shows the word "ROCK" written in pencil next to the letter "F" which denotes this corner. A BCS tie card dated August 23, 1974 states "found RRR." A BCS tie card dated August 19, 2005 shows the corner as a harrison monument but the sketch of the corner on this document does not match the physical circumstance at the corner and appears to represent a different locale.

This corner was excavated on March 14, 2011. Prior to excavation a vertical section of railroad rail was found at 1 inch deep and a rebar was found 1 foot west of the rail. Excavation revealed a stone found at 11 inches deep. The stone was vertical, embedded in the clay and oriented in cardinal directions. The stone measured 15 inches tall by 8 inches N-S by 6 inches E-W and appears to be of blue granite material. No specific markings were found on the stone. The characteristics of the stone match those of other rocks found marking corners throughout the county and the stone was accepted as the best available evidence of the corner. The stone was removed and a harrison monument was set in its place, at the position of the top, center of the stone. The railroad rail, removed during excavation, had been 0.9 foot south and 0.2 foot east of the stone.

This corner was originally established as a wood post in June, 1822.



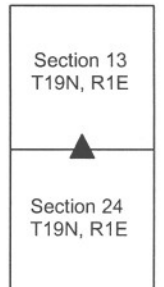
Kenneth E. Hedge

 Kenneth E. Hedge, County Surveyor

James S. Swift

 James S. Swift, IN LS 20200054
 March 1, 2012

Center Twp



PHOTOGRAPHIC DOCUMENTATION

Date of photography: March 14, 2011

View of the stone as first exposed.



The stone partially exposed.



View from the north, looking across the stone and south along County Road 550 East.



The stone partially exposed and wahsed, showing the blue granite.



View of the stone from the east.



For details and documentation, refer to related sheet "Section Corner Record."

SECTION CORNER RECORD

NE-300-600

BOONE COUNTY SURVEYOR'S OFFICE

State Plane grid coordinates NAD83 (NSRS 2007):

Corner 1: North: 1762016.52 East: 3156220.05 (U.S. survey feet)

Corner 2: North: 1761973.59 East: 3156220.35 (U.S. survey feet)

Corners 1 & 2:

Type of monument: Harrison, 4" disk 'Section Corner'

Depth: One inch below adjacent road surface

Indiana tie card references:

IN02_T19NR1E13_80

IN02_T19NR1E24_08

IN02_T19NR2E18_72

IN02_T19NR2E19_00

- A - Boone County witness mark, flush, 28.11' to corner 1, 68.49' to corner 2.
- B - Mag nail set in N. side wood post, 1' a.g., 46.22' to corner 1, 19.39' to corner 2.
- C - Boone County witness mark, flush, 58.99' to corner 1, 17.82' to corner 2.
- D - Mag nail set in N. side power pole, 2' a.g., 41.07' to corner 1, 17.70' to corner 2.

S.E. Corner, Section 13
N.E. Corner, Section 14
T 19 N, R 1 E ①

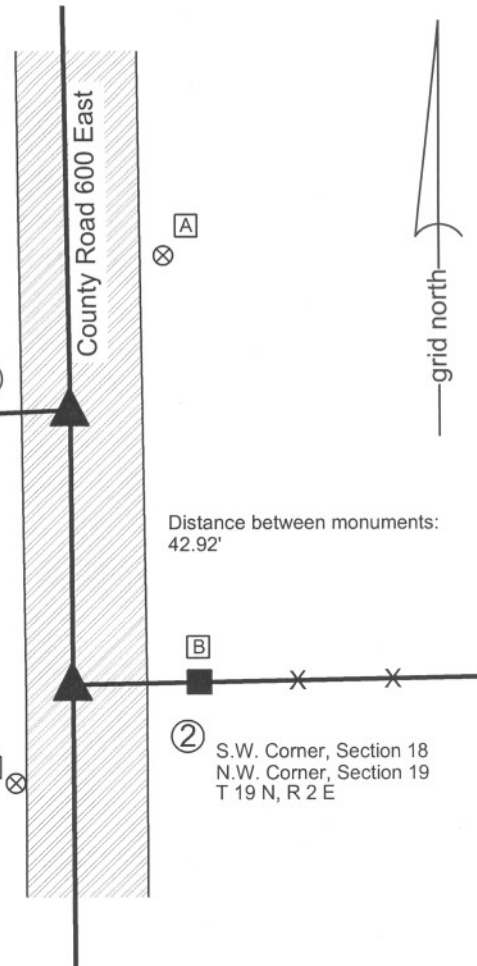
Distance between monuments:
42.92'

② S.W. Corner, Section 18
N.W. Corner, Section 19
T 19 N, R 2 E

The harrison monuments were set in place of railroad rails found. A BCS record of November 23, 1871 states "Reestablished by lap 66 lk south from corner Sections 13 & 24 from trees. Set rock 17, 11 by 6 + on E. side." A BCS tied card dated October 14, 1971 states Stone found, RRR put in." BCS tie cards dated July 28, 2005 show both corners as marked by harrison monuments with no documentation of source. Corner 1 was excavated on June 3, 2010. Corner 2 was excavated on June 18, 2010. Prior to excavation, harrison monuments were found at both corners. Excavation of corner 1 revealed a railroad rail found at 7 inches deep, directly below the harrison monument. No other evidence was found and it was accepted that the rail was set in place of the stone found in 1971. Excavation of corner 2 revealed a railroad rail found at 10 inches deep, 0.1' east of the harrison. No other evidence was found and it was accepted that the rail at corner 2 was also set in place of the stone found in 1971. It is not specifically known whether stones were found at both corners in 1971, but the tie card shows ties to both corners. In any case, the rails were held as the best evidence of the position of the corners. The harrison monument at corner 1 was set in place of the rail. The harrison monument was set at the same north-south position as the rail, but was set on the line between corner 1 and the standard corner to the south, approximately 0.4 feet west of the rail. It is noted that the rails, as measured from the top center of each, were 42.92 feet apart, which distance matches the 2005 tie cards for the harrison monuments. The 1971 tie card shows a distance of 43.2 separating the corners. The record closing distance of 66 links is equal to 43.56 feet. The physical distance between the found rails was held as the closing distance, or "lap" as referred to in the 1871 record. Corner 1 was originally established as a wood post in July, 1819. Corner 2 was originally established as a wood post in July, 1821.

CORNER WITNESS DETAIL

SCALE 1" = 30' 0' 15' 30'



Kenneth E. Hedge
Kenneth E. Hedge, County Surveyor

James S. Swift
James S. Swift, IN LS 20200054
July 25, 2011

Center Twp	Marion Twp
Section 13 T19N, R1E	Section 18 T19N, R2E
Section 24 T19N, R1E	Section 19 T19N, R2E