

SECTION CORNER RECORD

BOONE COUNTY SURVEYOR'S OFFICE

SW 300-600

Data for Corner 1 only:

State Plane grid coordinates NAD83 (2011):

North: 1729563.81 East: 3093253.40 (U.S. survey feet)

Type of monument: Harrison, 4" disk 'Section Corner'

Depth: Six inches below adjacent gravel road surface

Indiana tie card references:

IN02_T18NR2W13_80 IN02_T18NR1W18_72

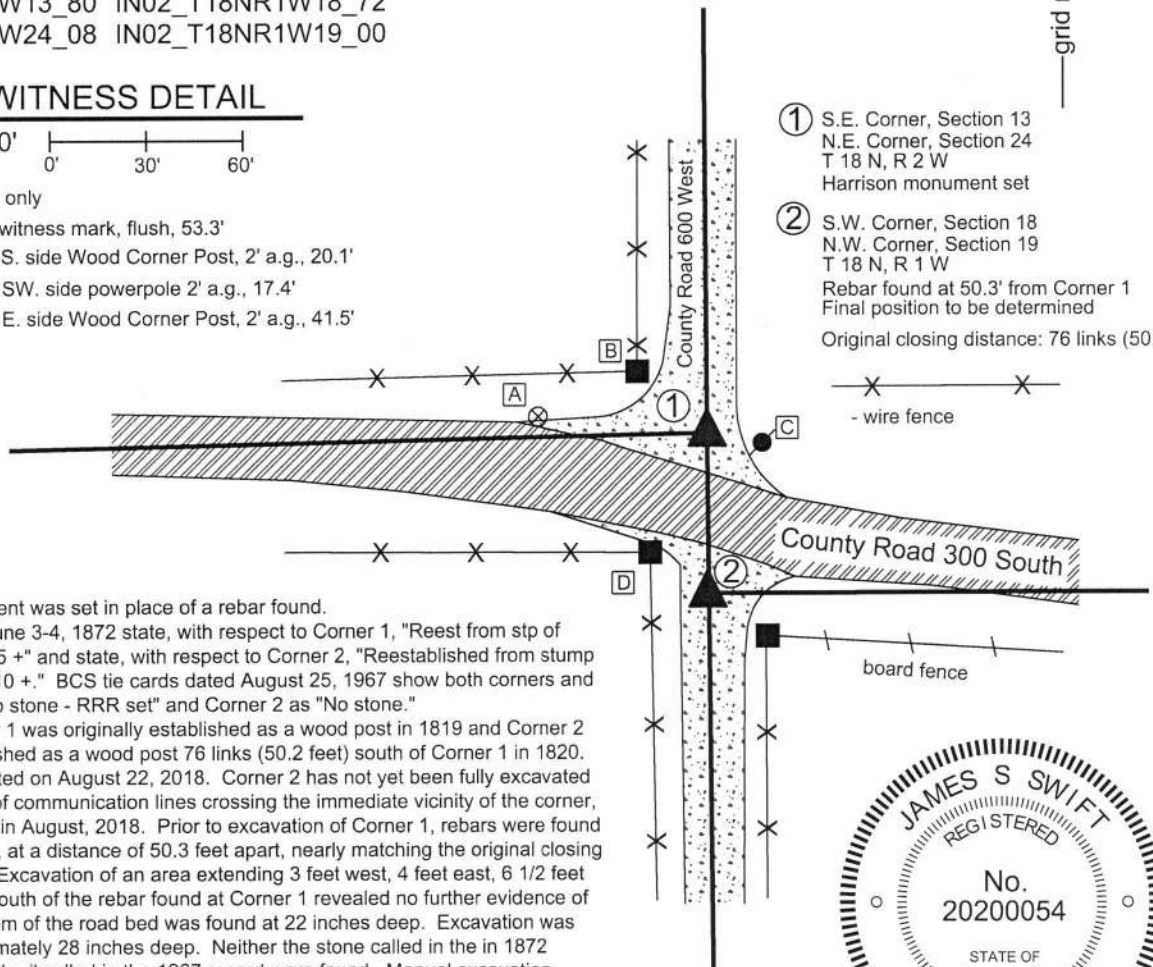
IN02_T18NR2W24_08 IN02_T18NR1W19_00

CORNER WITNESS DETAIL

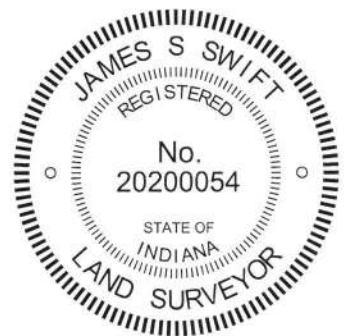
SCALE 1" = 60'

All ties to Corner 1 only

- A - Boone County witness mark, flush, 53.3'
- B - Mag nail set in S. side Wood Corner Post, 2' a.g., 20.1'
- C - Mag nail set in SW. side powerpole 2' a.g., 17.4'
- D - Mag nail set in E. side Wood Corner Post, 2' a.g., 41.5'



- ① S.E. Corner, Section 13
N.E. Corner, Section 24
T 18 N, R 2 W
Harrison monument set
- ② S.W. Corner, Section 18
N.W. Corner, Section 19
T 18 N, R 1 W
Rebar found at 50.3' from Corner 1
Final position to be determined
Original closing distance: 76 links (50.2')



The Harrison monument was set in place of a rebar found. BCS records dated June 3-4, 1872 state, with respect to Corner 1, "Reest from stp of Beech, set rock 10 7 5 +'" and state, with respect to Corner 2, "Reestablished from stump of Lynn, Rock 16 10 10 +." BCS tie cards dated August 25, 1967 show both corners and show Corner 1 as "No stone - RRR set" and Corner 2 as "No stone." It is noted that Corner 1 was originally established as a wood post in 1819 and Corner 2 was originally established as a wood post 76 links (50.2 feet) south of Corner 1 in 1820. Corner 1 was excavated on August 22, 2018. Corner 2 has not yet been fully excavated due to the presence of communication lines crossing the immediate vicinity of the corner, as marked by IUPPS in August, 2018. Prior to excavation of Corner 1, rebars were found marking both corners, at a distance of 50.3 feet apart, nearly matching the original closing distance of 76 links. Excavation of an area extending 3 feet west, 4 feet east, 6 1/2 feet north and 3 1/2 feet south of the rebar found at Corner 1 revealed no further evidence of the corner. The bottom of the road bed was found at 22 inches deep. Excavation was performed to approximately 28 inches deep. Neither the stone called in the in 1872 record nor the railroad rail called in the 1967 record were found. Manual excavation around the rebar at Corner 2 revealed no further evidence. Though it was expected that vertical sections of railroad rail would be found at both corners, rails were not found at either corner. It appears that significant grading or roadwork has occurred at this intersection since 1967. It is noted that the positions of the two rebars fit reasonably well with the local evidence of the corners in the form the physical roadways in all four cardinal directions. It is also noted that the distance tie references from the 1967 plans appear to be gone and that most of the various fencing appears to be more recent than 1967. The found rebar at Corner 1 was held as marking the corner and was replaced with a Harrison monument. The rebar at Corner 2 was left in place, 50.3 feet south of Corner 1. The final position of Corner 2 will be established after the position of the east quarter corner of Section 24 is established.

Jackson Township

Section 13 T18N, R2W	Section 18 T18N, R1W
Section 24 T18N, R2W	Section 19 T18N, R1W

Kenneth E. Hedge
Kenneth E. Hedge, County Surveyor

James S. Swift
James S. Swift, IN LS 20200054

February 6, 2019

SECTION CORNER RECORD

SW 300-650

BOONE COUNTY SURVEYOR'S OFFICE

State Plane grid coordinates NAD83 (2011):

North: 1729504.08 East: 3090595.55 (U.S. survey feet)

Type of monument: Harrison, 4" disk 'Section Corner'

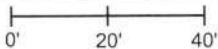
Depth: One inch below adjacent road surface

Indiana tie card references:

IN02_T18NR2W13_76 IN02_T18NR2W24_04

CORNER WITNESS DETAIL

SCALE 1" = 40'

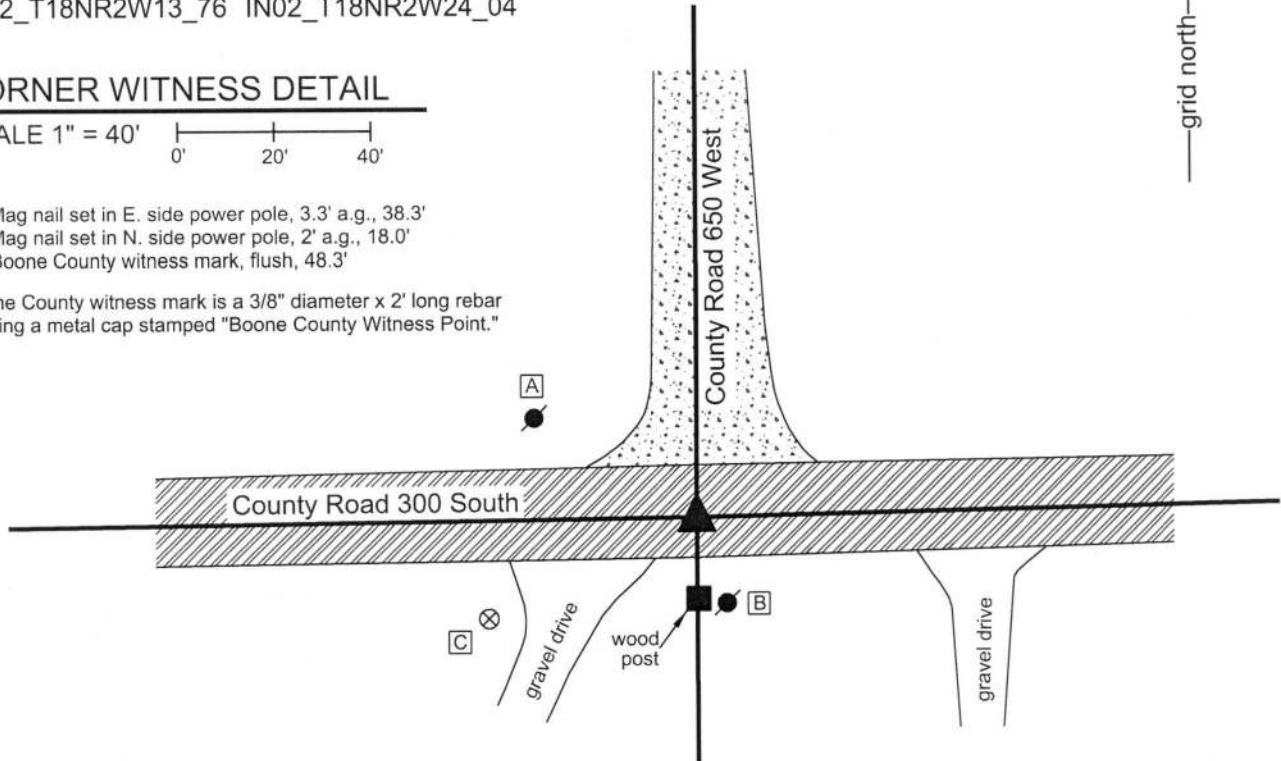


A - Mag nail set in E. side power pole, 3.3' a.g., 38.3'

B - Mag nail set in N. side power pole, 2' a.g., 18.0'

C - Boone County witness mark, flush, 48.3'

Boone County witness mark is a 3/8" diameter x 2' long rebar bearing a metal cap stamped "Boone County Witness Point."

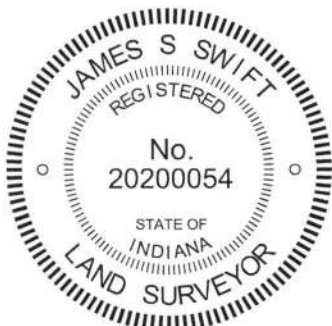


The Harrison monument was set over a stone found

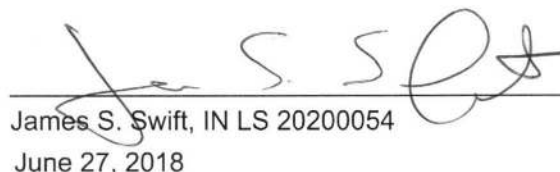
A BCS record dated October 18, 1858 states, with respect to this corner, "Reest. from with trees, set rock 8x12." A BCS tie card dated October 5, 1971 states "No stone - RRR put in." The term RRR is interpreted to signify railroad rail.

This corner was excavated on June 13, 2018. Prior to excavation, a Mag nail was found flush with the surface of the road at the center of the intersection. Excavation revealed a vertical section of railroad rail found at 7 inches deep, directly below the Mag nail. Further excavation revealed a stone found at 26 inches deep. The stone was embedded in the clay layer below the road with the top of the stone coincident with bottom of the road bed. The stone measured 8 inches N-S by 11 inches E-W by 4 inches tall. It was oriented in cardinal directions and had a substantial divot at the top, high point of the rock. It is noted that the stone is situated in line with the old post on the south side of the road, almost exactly 1 rod (16.5 feet) north of the post. The stone was accepted as being the monument described in the 1858 record. The divot on the top of the stone was held as marking the corner and a Harrison monument was set directly over the divot. Clearly, the statement in the 1971 tie card of "no stone" is erroneous and the railroad rail set in 1971 is not considered to be marking the corner. The railroad rail, removed during excavation, had been 1.0 foot north and 0.8 foot west of the divot on the stone.

This corner was originally established as a wood post in 1820.




Kenneth E. Hedge, County Surveyor


James S. Swift, IN LS 20200054
June 27, 2018

Jackson Township

Section 13
T18N, R2W

Section 24
T18N, R2W

SECTION CORNER RECORD

SW 300-700

BOONE COUNTY SURVEYOR'S OFFICE

State Plane grid coordinates NAD83 (2011):

North: 1729468.34 East: 3087937.76 (U.S. survey feet)

Type of monument: Harrison, 4" disk 'Section Corner'

Depth: One inch below adjacent road surface

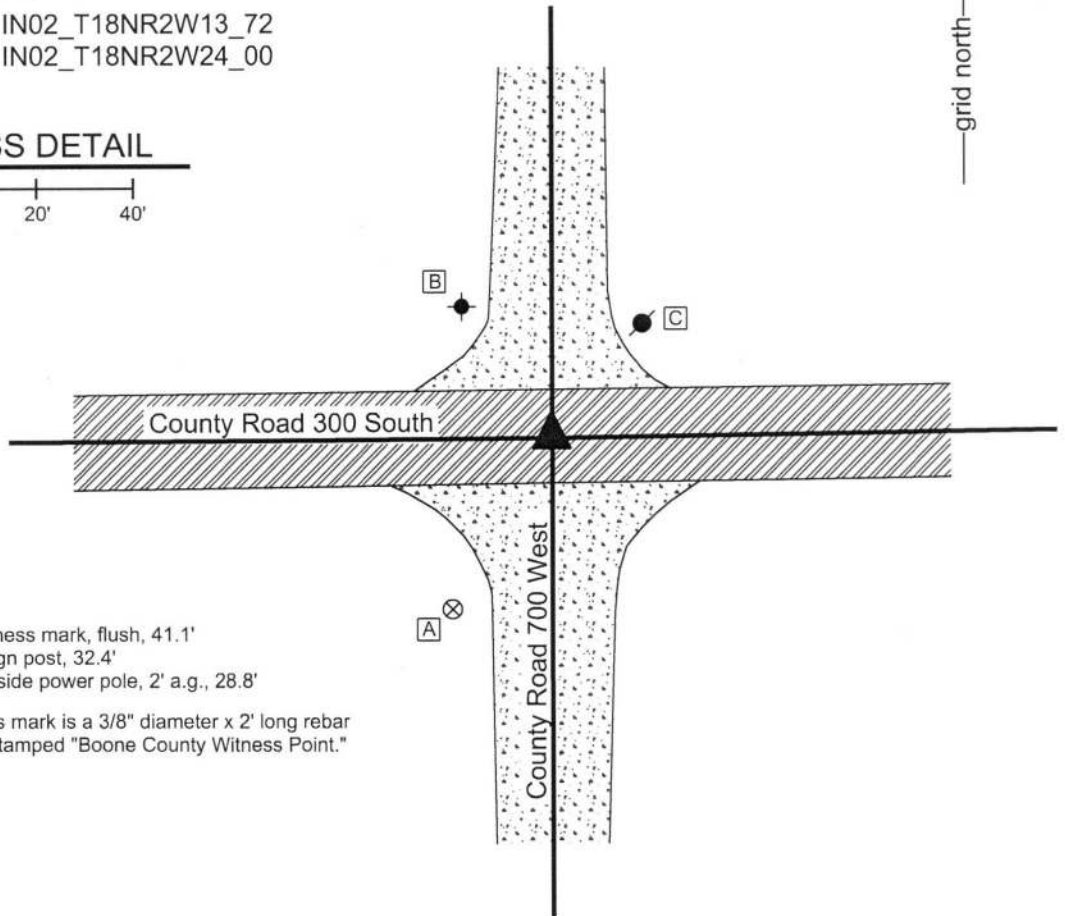
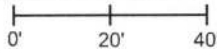
Indiana tie card references:

IN02_T18NR2W14_80 IN02_T18NR2W13_72

IN02_T18NR2W23_08 IN02_T18NR2W24_00

CORNER WITNESS DETAIL

SCALE 1" = 40'



- A - Boone County witness mark, flush, 41.1'
- B - East edge, stop sign post, 32.4'
- C - Mag nail set in S. side power pole, 2' a.g., 28.8'

Boone County witness mark is a 3/8" diameter x 2' long rebar bearing a metal cap stamped "Boone County Witness Point."

The Harrison monument was set in place of a railroad rail found.

No specific descriptions of this corner were found in the BCS Surveyor's Record beyond the original establishment of the corner as a wood post in 1820. A BCS tie card dated August 24, 1967 shows the corner as "no stone."

This corner was excavated on June 13, 2018. Prior to excavation, a railroad spike was found at the surface of the road in the center of the intersection. Excavation revealed a vertical section of railroad rail found at 6 inches deep, below the railroad spike. Though the 1967 tie card does not specifically mention the rail, it is considered most likely that the rail was set in association with the creation of that document. Further excavation of an area extending 2.5 feet in all cardinal directions from the railroad spike and rail revealed no further evidence of the corner. The clay layer below the road bed was found at 15 inches deep. Excavation was performed to approximately 19 inches deep. The position of the top of the railroad rail was held as marking the corner. The rail was removed and replaced with a Harrison monument.



Kenneth E. Hedge
Kenneth E. Hedge, County Surveyor

James S. Swift
James S. Swift, IN LS 20200054
June 27, 2018

Jackson Township

Section 14 T18N, R2W	Section 13 T18N, R2W
Section 23 T18N, R2W	Section 24 T18N, R2W

SECTION CORNER RECORD

SW 400-600

BOONE COUNTY SURVEYOR'S OFFICE

State Plane grid coordinates NAD83 (2011):

Corner 1: North: 1724240.58 East: 3093292.35 (U.S. survey feet)

Corner 2: North: 1724220.90 East: 3093292.52 (U.S. survey feet)

Type of monument: Harrison, 4" disk 'Section Corner'

Depth: Six inches below adjacent gravel road surface.

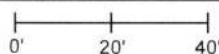
Indiana tie card references:

IN02_T18NR2W24_80 IN02_T18NR1W19_72

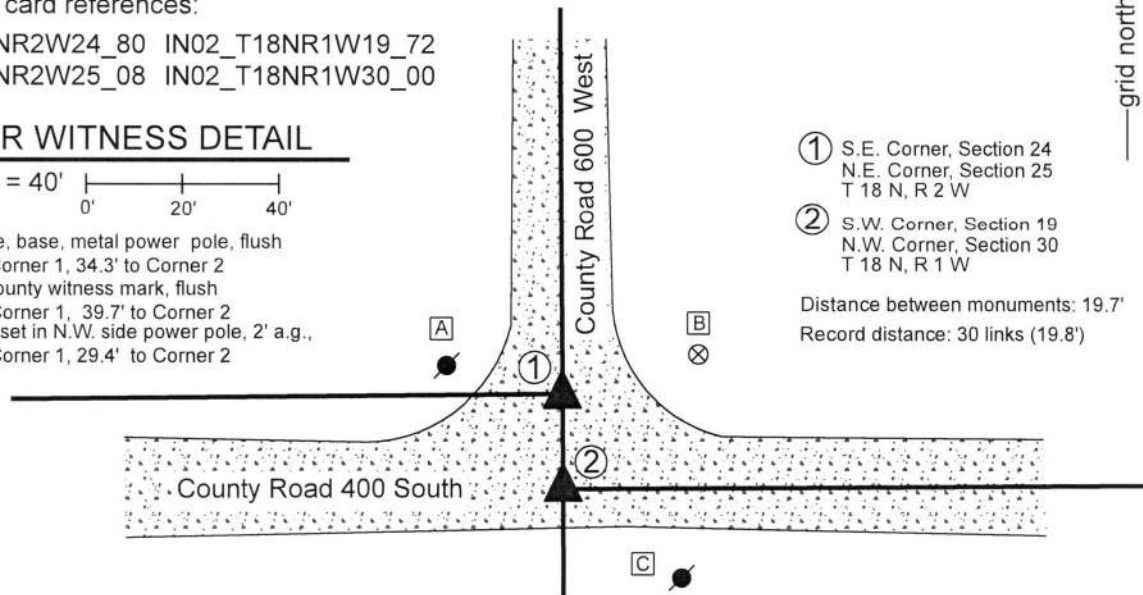
IN02_T18NR2W25_08 IN02_T18NR1W30_00

CORNER WITNESS DETAIL

SCALE 1" = 40'



- A - East edge, base, metal power pole, flush
23.4' to Corner 1, 34.3' to Corner 2
- B - Boone County witness mark, flush
29.6' to Corner 1, 39.7' to Corner 2
- C - Mag nail set in N.W. side power pole, 2' a.g.,
44.0' to Corner 1, 29.4' to Corner 2



① S.E. Corner, Section 24
N.E. Corner, Section 25
T 18 N, R 2 W

② S.W. Corner, Section 19
N.W. Corner, Section 30
T 18 N, R 1 W

Distance between monuments: 19.7'
Record distance: 30 links (19.8')

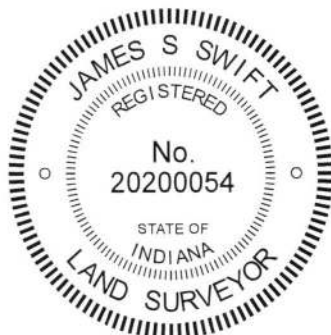
The Harrison monument at Corner 1 was set over a stone found. The Harrison monument at Corner 2 was set in place of a vertical section of railroad rail found.

A BCS record of June 3-4, 1872 describes both corners. In an entry for corner "E" of section 24 (Corner 1 herein) the record states, "Reest. from Oak. Set a rock marked +. 30 links south of this set a rock 21.13.3 +. Cor. sections 19&30." A corresponding record for corner "A" of section 30 (Corner 2 herein), dated June 4, 1872, states "Reestablished 30 links south of corner secs. 24&25 where an oak is green. Set a rock 21.13.3. Also set a rock + at corner 24 & 25."

A BCS tie card with no date but believed to be from the late 1960s or early 1970s shows the intersection and shows a corner with ties and the notation "STONE LOCATED." The tie card indicates that this is for the corner of section 24 & 25, though the graphical representation of the intersection indicates that the corner established on that date is actually the corner of sections 19&30.

These corners were excavated on August 16, 2018. Prior to excavation, a vertical section of railroad rail was known to mark the corner of sections 19&30. The position of a stone marking the corner of sections 24&25 was determined from information shown on a survey by Frank T. Luse, LS20000223 recorded as Instrument 201300014151 in the Office of the Boone County Recorder. Excavation at Corner 1 revealed the vertical section of railroad rail at 3 inches deep. No stone or other evidence was found around the rail. It is believed that the stone which was set in 1872 was removed and replaced with the railroad rail at the time of the creation of the undated tie card, as it is known that this was a common practice of BCS field crews in that era. Excavation at Corner 1 revealed a stone found at 16 inches deep. The stone was of a rough surface and no specific markings were detected on it. The highest point is at the north edge of the stone. This point was at 19.7 feet (0.1 foot less than 30 links) north of the center point of the top of the rail. The top of the rail was held as marking Corner 2. The rail was removed and a Harrison monument was set in the same position. The specific position of Corner 1 was established on a prolongation of the line from the corner 1/2 mile south (see Corner SW 450-600) through the rail at the distance between the top of the rail and the north edge / high point of the stone found at Corner 1. A Harrison monument was set at this position, which fell approximately 0.1 foot west of the high point of the found stone. Hence the monument is situated directly over the stone but 0.1 foot west of the high point on the north edge and the two corners are at 19.7 feet apart, rather than 19.8 feet. It is noted that if the full 30 link separation were held, Corner 1 would fall slightly north of the north edge of the found stone. It is noted that the east-west roadway of County Road 400 South does not jog at this corner and that the roadway between Corner 1 and the corner 1/2 mile west (see Corner SW 400-650) is south of the section line.

Corner 1 was originally established in 1819. Corner 2 was established in 1820, 30 links south of Corner 1.



Kenneth E. Hedge
Kenneth E. Hedge, County Surveyor

James S. Swift
James S. Swift, IN LS 20200054
August 29, 2018

Jackson Township

Section 24 T18N, R2W	Section 19 T18N, R1W
Section 25 T18N, R2W	Section 30 T18N, R1W

SECTION CORNER RECORD

SW 400-650

BOONE COUNTY SURVEYOR'S OFFICE

State Plane grid coordinates NAD83 (2011):

North: 1724218.05 East: 3090617.48 (U.S. survey feet)

Type of monument: Harrison, 4" disk 'Section Corner'

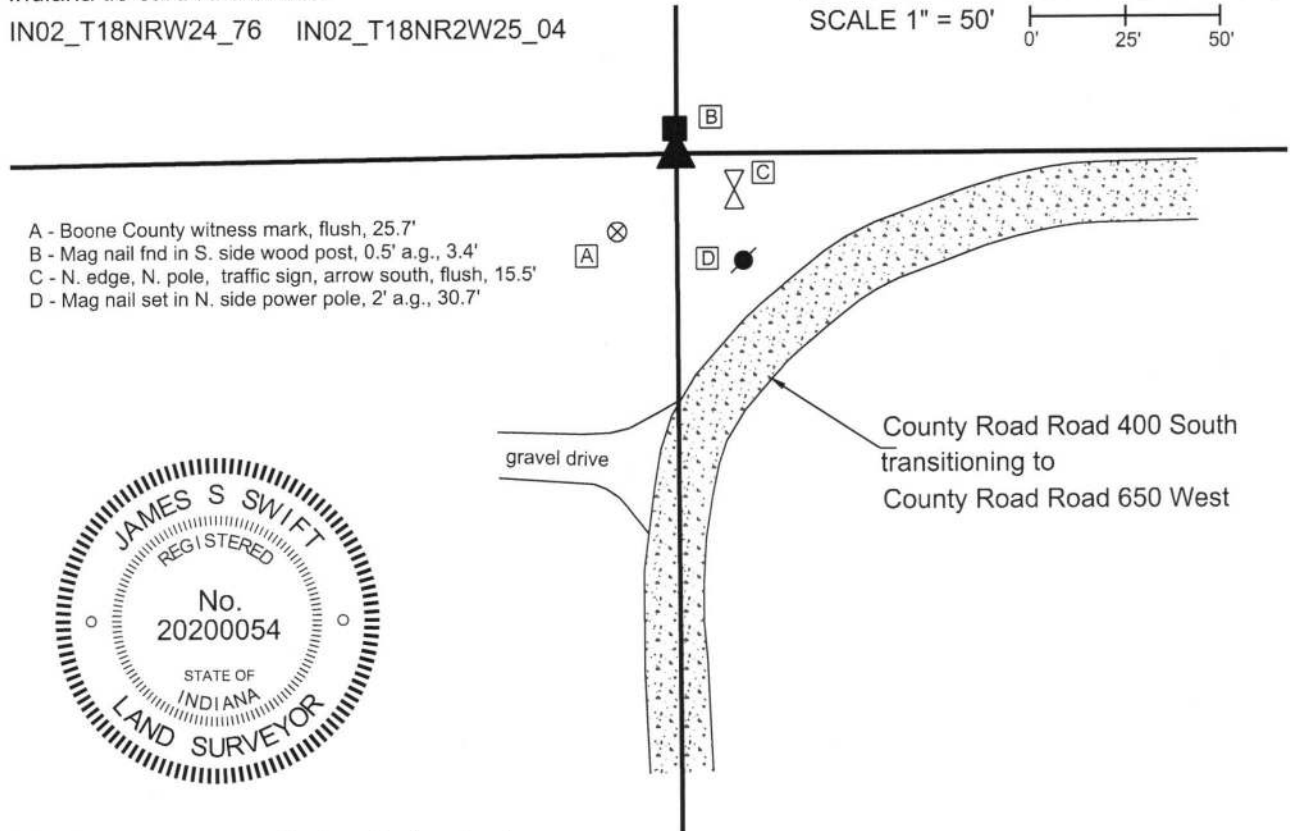
Depth: Flush with adjacent ground

Indiana tie card references:

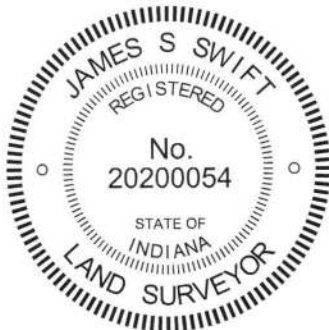
IN02_T18NRW24_76 IN02_T18NR2W25_04

CORNER WITNESS DETAIL

SCALE 1" = 50' 0' 25' 50'



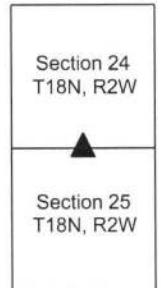
- A - Boone County witness mark, flush, 25.7'
- B - Mag nail fnd in S. side wood post, 0.5' a.g., 3.4'
- C - N. edge, N. pole, traffic sign, arrow south, flush, 15.5'
- D - Mag nail set in N. side power pole, 2' a.g., 30.7'



The Harrison monument was set in place of a stone found.

A BCS record dated September 20, 1877 states, with respect to this corner, "Reest at intersection of section line and center line. Set Rock 12.21.17+ marked + on top side." A subsequent record of November 8, 1893 calls the corner, along with a nearby corner, "Rocks placed." No recent BCS tie cards were found referencing this corner. However, it is known that recent surveys in the area have held a stone found at the corner. One of these surveys is recorded in Survey Book 14, page 62 in the Office of the Boone County Surveyor, certified by Frank T. Luse, LS 20000223, on December 7, 2013. The stone shown as marking the corner of the Luse survey was found in good condition. The stone was found 3 inches below grade, standing upright, oriented north-south. The stone measured 11 inches N-S by 4 inches E-W by 8 inches tall. No specific marks were found. The approximate top, center of the stone was held, which is believed to fit with the position held for the Luse survey. The stone was accepted as marking the corner as was replaced with a Harrison monument in the same position. It is noted that the stone does not match the dimensions in the 1877 record. It is also noted that the 1893 record indicates that a new stone was placed at the corner, which is interpreted to indicate that the rock from the 1877 record was either not found, not held, or known to have been displaced by 1893. It is further noted that the quarter section line which bears east from this point falls north of and generally parallel with the roadway of County Road 400 South. This is believed to be due to the fact that the roadway does not follow the 30 link jog at the range line approximately one-half mile east. A stone known to exist at the east quarter corner of section 24 also falls north of the east-west roadway. The wording in the 1877 record may indicate that, at that time, the corner was established in line with the roadway. Probing in the vicinity of the intersection of the extended east-west roadway and the north-south section line did not yield the discovery of the rock described in the 1877 record. The currently held position of the corner north of the roadway is considered valid and appears to match the best available evidence of the original lines. This corner was originally established as a wood post in 1820.

Jackson Twp



James S. Swift
 James S. Swift, IN LS 20200054

Kenneth E. Hedge
 Kenneth E. Hedge, County Surveyor

September 26, 2017

SECTION CORNER RECORD

BOONE COUNTY SURVEYOR'S OFFICE

SW 400-700

State Plane grid coordinates NAD83 (2011):

North: 1724182.17 East: 3087949.56 (U.S. survey feet)

Type of monument: Harrison, 4" disk 'Section Corner'

Depth: Six inches below adjacent gravel road surface

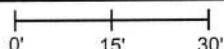
Indiana tie card references:

IN02_T18NR2W23_80 IN02_T18NR2W24_72

IN02_T18NR2W26_08 IN02_T18NR2W25_00

CORNER WITNESS DETAIL

SCALE 1" = 30'



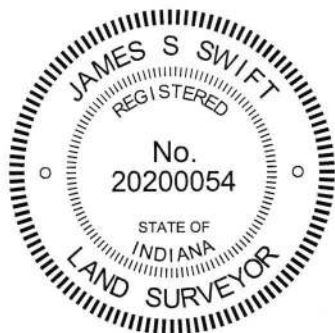
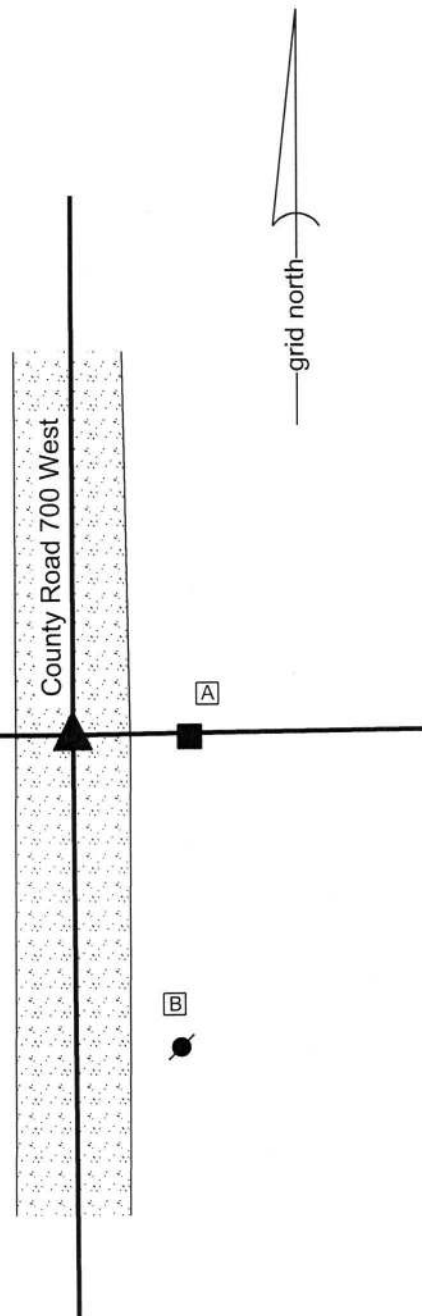
- A - Mag nail set in W. side wood post, 1' a.g., 16.6'
- B - Mag nail set in W. side power pole, 2' a.g., 50.8'
- C - Boone County witness mark, flush, 37.1'

Boone County witness mark is a 3/8" diameter x 2' long rebar bearing a metal cap stamped "Boone County Witness Point."

The Harrison monument was set in place of a vertical section of railroad rail found. A BCS record of August 16-18, 1858 states, with respect to this corner, "reest. from old witness trees. Set a rock 17, 24." A BCS tie card of March 20, 1969 shows the corner and states "no stone."

This corner was excavated on December 18, 2017. Prior to excavation, a vertical section of railroad rail was found at 4 inches deep in the gravel road opposite a wood end post on the east side of the road. Although the 1969 tie card does not mention the rail, it is considered most likely that the rail was set in association with the creation of that document. It is known to have been a common practice of BCS field crews from that era to set vertical sections of railroad rail but to not specifically state that fact on the associated documentation sheets. Excavation of an area extending 3 feet north, 3 feet south, 4 feet east and 4 feet west of the rail revealed no further evidence of the corner. The area was excavated to 16 inches deep, approximately 2 inches into the clay layer below the road bed. It is noted that the base material of the road bed was sufficiently substantial in size to indicate that the immediate vicinity of the corner was likely subject to standing in water when the road bed was established. The presence of an open ditch immediately to the north of and at similar elevation to the corner corroborates this supposition of previously standing water. It has been observed at other corners throughout the county that evidence of the previous presence of standing water yields a situation where ancient evidence such as a stone monument is not found.

The vertical section of rail fit with the local evidence of the corner in the form of the north-south roadway and the post on the east side of the road. The rail also fits reasonably well with the relative positions of proximate corners. The rail was held as marking the corner. The rail was removed and replaced with a Harrison monument in the same position. This corner was originally established as a wood post in 1820.



Kenneth E. Hedge
 Kenneth E. Hedge, County Surveyor

James S. Swift
 James S. Swift, IN LS 20200054
 January 31, 2018

Jackson Township

Section 23 T18N, R2W	Section 24 T18N, R2W
Section 26 T18N, R2W	Section 25 T18N, R2W