

SECTION CORNER RECORD

SE 300-500

BOONE COUNTY SURVEYOR'S OFFICE

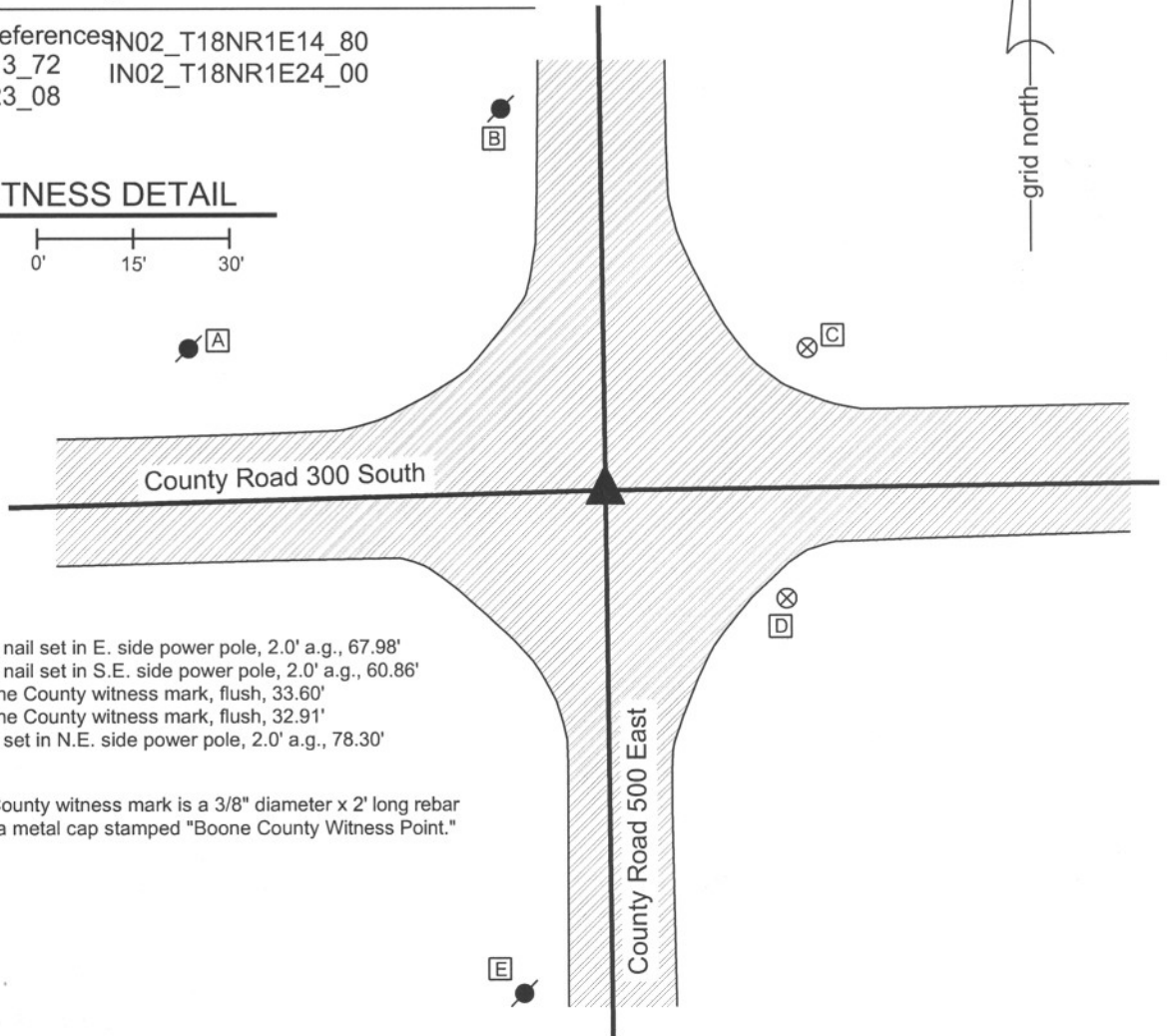
State Plane grid coordinates NAD83 (NSRS 2007):
North: 1730376.03 East: 3151207.38 (U.S. survey feet)

Type of monument: Harrison, 4" disk 'Section Corner'
Depth: One inch below adjacent road surface

Indiana tie card references: IN02_T18NR1E14_80
IN02_T18NR1E13_72 IN02_T18NR1E24_00
IN02_T18NR1E23_08

CORNER WITNESS DETAIL

SCALE 1" = 30'



- A - Mag nail set in E. side power pole, 2.0' a.g., 67.98'
- B - Mag nail set in S.E. side power pole, 2.0' a.g., 60.86'
- C - Boone County witness mark, flush, 33.60'
- D - Boone County witness mark, flush, 32.91'
- E - Mag set in N.E. side power pole, 2.0' a.g., 78.30'

Boone County witness mark is a 3/8" diameter x 2' long rebar bearing a metal cap stamped "Boone County Witness Point."

The harrison monument was set in place of a harrison monument found over a railroad rail. No old BCS stone records were found for this corner. A BCS tie card dated August 16, 1967 shows the corner but does not give any specific information about what was found or set. A BCS tie card dated November 28, 2005 shows the corner as a harrison monument with no documentation of source. This corner was excavated on June 16, 2008. Prior to excavation a harrison monument was visible at the surface at the approximate intersection of the two county roads. A railroad rail was found at 16 inches deep, directly below the harrison. Excavation of an area 5 feet N-S by 5 feet E-W centered on the previously existing harrison yielded no more monuments. A new harrison was set in the position of the old harrison and the railroad rail. This corner was originally established as a wood post in June, 1820.



Kenneth E. Hedge
Kenneth E. Hedge, County Surveyor

James S. Swift
James S. Swift, IN LS 20200054
March 11, 2009

Worth Township

Section 14 T18N, R1E	Section 13 T18N, R1E
Section 23 T18N, R1E	Section 24 T18N, R1E

SECTION CORNER RECORD

SE 300-550

BOONE COUNTY SURVEYOR'S OFFICE

State Plane grid coordinates NAD83 (NSRS 2007):

North: 1730405.91 East: 3153882.47 (U.S. survey feet)

Type of monument: Harrison, 4" disk 'Section Corner'

Depth: One inch below adjacent road surface

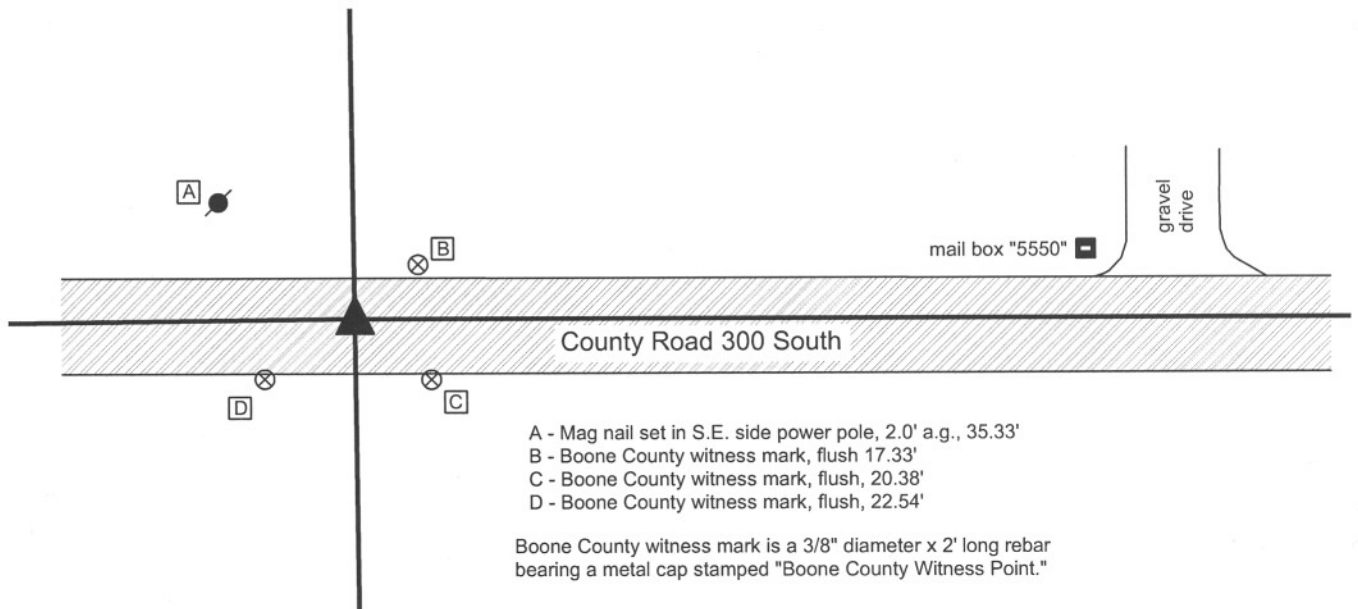
Indiana tie card references:

IN02_T18NR1E13_76

IN02_T18NR1E24_04

CORNER WITNESS DETAIL

SCALE 1" = 40'



The harrison monument was set in place of a railroad rail and harrison monument found.

No old BCS stone records were found for this corner. A BCS tie card dated December 2, 1970 states "no stone." A BCS tie card dated October 25, 2005 shows the corner as a harrison monument with no documentation about source. This corner was excavated on July 17, 2008. Prior to excavation, a harrison monument was visible at the surface. Excavation revealed a railroad rail 9 inches deep, below the harrison. A 5 foot N-S by 5 foot E-W area was excavated, centered on the harrison. Excavation was performed to the virgin clay layer, at approximately 3.5 feet. All sides of the hole were probed thoroughly. No other monuments were found. A new harrison monument was set in place of the rail and old harrison, both of which were removed during excavation.

This corner was originally established as a wood post in June, 1820.



Kenneth E. Hedge
Kenneth E. Hedge, County Surveyor

James S. Swift
James S. Swift, IN LS 20200054

March 11, 2009

Worth
Township

Section 13
T18N, R1E

Section 24
T18N, R1E

SECTION CORNER RECORD

SE 300-600

BOONE COUNTY SURVEYOR'S OFFICE

State Plane grid coordinates NAD83 (NSRS 2007):
North: 1730404.93 East: 3156558.88 (U.S. survey feet)

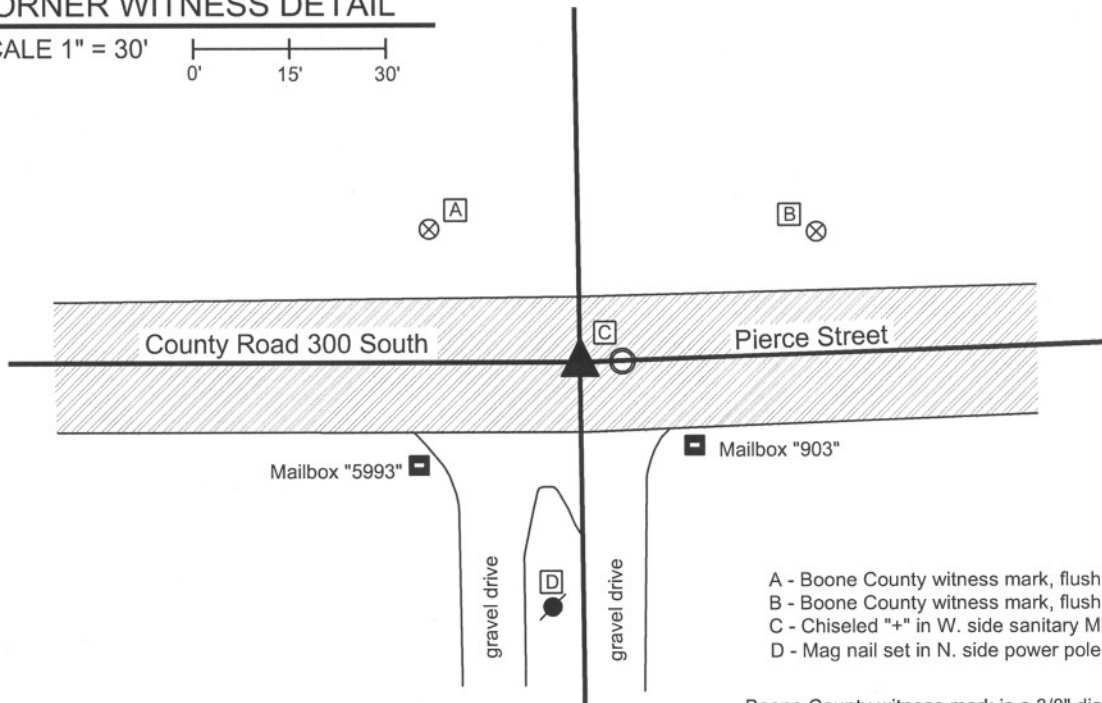
Type of monument: Harrison, 4" disk 'Section Corner'
Depth: One inch below adjacent road surface

Indiana tie card references:
IN02_T18NR1E13_80 IN02_T18NR2E18_72
IN02_T18NR1E24_08 IN02_T18NR2E19_00



CORNER WITNESS DETAIL

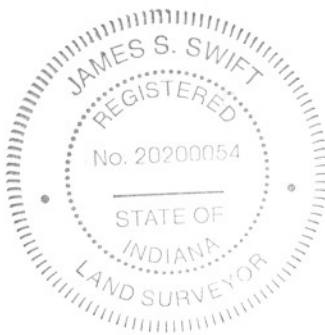
SCALE 1" = 30'



- A - Boone County witness mark, flush, 31.56'
- B - Boone County witness mark, flush, 42.37'
- C - Chiseled "+" in W. side sanitary MH, T.C., 4.9'
- D - Mag nail set in N. side power pole, 2' a.g., 37.6'

Boone County witness mark is a 3/8" diameter x 2' long rebar bearing a metal cap stamped "Boone County Witness Point."

The harrison monument was set in place of a harrison monument found. A BCS record of April 7-9, 1857 states "Reest. Set Rock 14 by 18 in." A BCS tie card dated February 26, 1969 states "no stone." A BCS tie card dated November 22, 2005 shows the corner as a harrison monument with no documentation about source. This corner was excavated on July 23, 2008. Prior to excavation, a harrison monument was visible at the surface. Excavation revealed clear evidence that the immediate vicinity of the corner was disturbed as part of the construction of a sanitary sewer and installation of the manhole 5 feet east of the harrison. No stone, nor any other monument was found. The old harrison was replaced with a new harrison in the same position. This corner was originally established as a wood post in 1819. There is no standard corner / closing corner offset as the federal notes for T 18 N, R 2 E state "intersect west line at post."



Kenneth E. Hedge
Kenneth E. Hedge, County Surveyor

James S. Swift
James S. Swift, IN LS 20200054

March 11, 2009

Worth Township

Section 13 T18N, R1E	Section 18 T18N, R2E
Section 24 T18N, R1E	Section 19 T18N, R2E

SECTION CORNER RECORD

SE 350-500

BOONE COUNTY SURVEYOR'S OFFICE

State Plane grid coordinates NAD83 (NSRS 2007):

North: 1727725.59 East: 3151237.13 (U.S. survey feet)

Type of monument: Harrison, 4" disk 'Section Corner'

Depth: One inch below adjacent road surface

Indiana tie card references:

IN02_T18NR1E23_44

IN02_T18NR1E24_36

CORNER WITNESS DETAIL

SCALE 1" = 40'



- A - Mag nail set in E. side, wood post, 2.0' a.g., 16.67'
- B - Boone County witness mark, flush, 24.25'
- C - Mag nail set in N. side, wood post, 2.0' a.g., 17.25'
- D - Boone County witness mark, flush, 45.09'

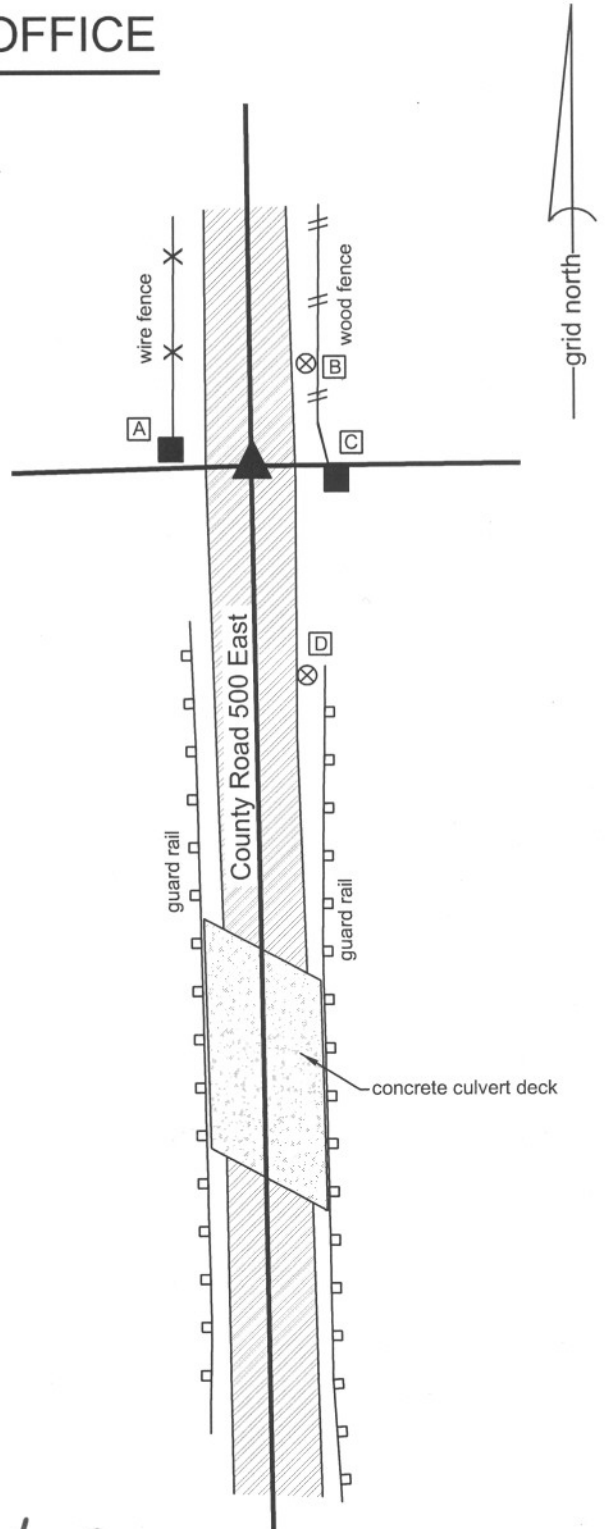
Boone County witness mark is a 3/8" diameter x 2' long rebar bearing a metal cap stamped "Boone County Witness Point."

A BCS record of June 17, 1872 states "re-established from stump of walnut, set a rock 16,14,8 marked +". This stone was found on March 31, 2008, 21 inches below grade. The top of the stone is 8 inches N-S by 14 inches E-W with a vague but visible "+" etched on the center of the top. The harrison monument was set directly over the etched "+" on the top of the stone. Refer to the attached sheet for photographic documentation.

A BCS tie card of October 6, 1969 shows the corner but does not specify the monument. The tie card states "no stone." Prior to excavation a harrison monument was visible at the surface, though disturbed. The origin of this harrison is not known and it was not established in sufficient concrete to maintain its stability. Excavation yielded a railroad rail, which was likely set in association with the creation of the 1969 tie card. The rail was leaning substantially towards the north with the top of the rail approximately 1.1 feet north of the bottom of the rail. The existing harrison had been over the top (north end) of the rail. The position resected from the 1969 ties was neither at the top nor bottom of the rail, but approximately in the middle and slightly to the east.

The harrison and rail were both removed during excavation. Further excavation yielded the stone called for in the 1872 record. The etched "+" is approximately 0.4 foot north and 0.3 foot east of the disturbed harrison.

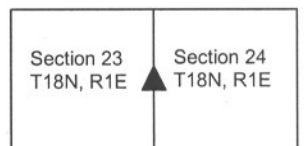
This corner was originally established as a wood post in June, 1820.



Kenneth E. Hedge
Kenneth E. Hedge, County Surveyor

James S. Swift
James S. Swift, IN LS 20200054
March 11, 2009

Worth Township



PHOTOGRAPHIC DOCUMENTATION

Date of photography: March 31, 2008

Corner stone - view from south. Note layers: Chip & seal asphalt, gravel road, road sub-base, clay. The stone is embedded in the clay.



Corner stone - view from the west, across stone and along fence to the east.



Corner stone - overhead view from southeast.



Corner stone - overhead close up.



Same picture as to the left with the etched "+" enhanced for ease of visual detection.



For details and documentation, refer to related sheet "Section Corner Record."

SECTION CORNER RECORD

SE 350-600

BOONE COUNTY SURVEYOR'S OFFICE

State Plane grid coordinates NAD83 (NSRS 2007):
North: 1727769.54 East: 3156587.73 (U.S. survey feet)

Type of monument: Harrison, 4" disk 'Section Corner'
Depth: 2 inches above adjacent ground

Indiana tie card references:
IN02_T18NR1E24_44
IN02_T18NR2E19_36



CORNER WITNESS DETAIL

SCALE 1" = 30'

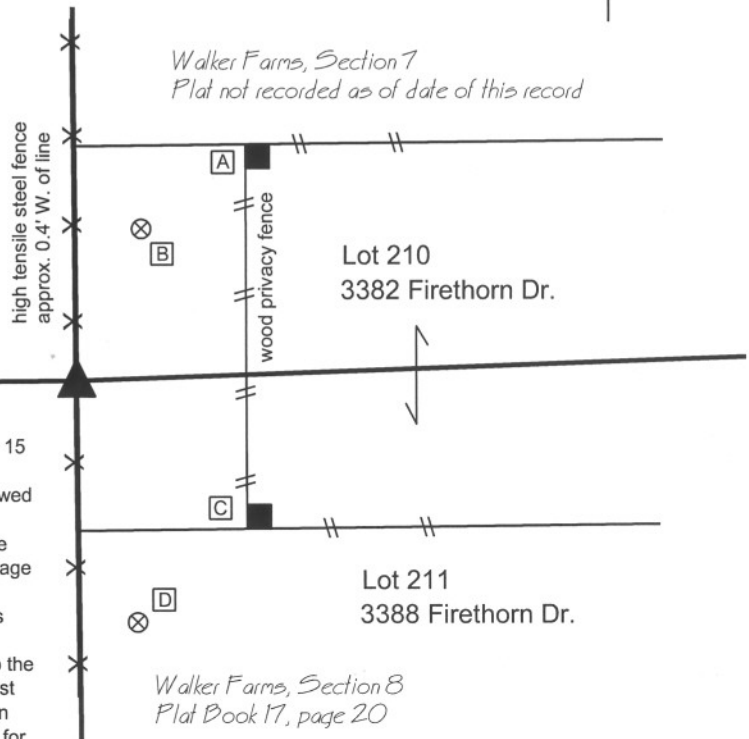


- A - Wood corner post, N.W. corner, base, 45.50'
- B - Boone County witness mark, flush, 25.74'
- C - Wood corner post, S.W. corner, base, 35.44'
- D - Boone County witness mark, flush, 38.98'

Boone County witness mark is a 3/8" diameter x 2' long rebar bearing a metal cap stamped "Boone County Witness Point."

The harrison monument was set in place of a stone found. A BCS record of April 9, 1857 states "Re Established. Set a Rock 9 by 15 in." No recent BCS tie cards were found referencing this corner. Preliminary excavation for this corner occurred on March 27, 2009, followed by final excavation and monumentation of May 11, 2009. Prior to excavation no monuments were visible in the vicinity of this corner. The corner is shown on the plat of Walker Farms Section 8, Plat Book 17, page 20 in the Office of the Boone County Recorder but the plat does not demonstrate a monument. The preliminary survey upon which this plat is based, Survey Book 4, page 67 demonstrates that the corner was established at the midpoint of the line connecting the section corners to the north and south. However, this survey holds a position for the southwest corner of section 19 which is approximately one rod north of the position held by this office, as discussed in detail on the Section Corner Record for corner SE-400-600. Hence, the calculated midpoint is approximately 1/2 rod north of the midpoint as held by this office. Given the lack of physical evidence for the corner, the midpoint of the line connecting the section corners (as held by this office) was computed and this position was "turned out" in the field. The record stone was found at nearly the exact position turned out in the field. The stone was approximately 2 inches below grade and measured approximately 9 inches N-S and E-W by 15 inches tall. The north side of the stone is vertical and the south side slopes to the south, giving the stone an overall vertical orientation, though more specifically on the north side than the south side. The stone was accepted as marking the corner and its presence at the midpoint of the line connecting the section corners is accepted as providing collateral evidence to the position of the section corner to the south, as discussed in the record for that corner. The stone was removed and the harrison monument was set at the position of the top, high point of the stone. Although this corner is on the range line, there was no recorded off-set for the corners to the north and south, hence no off-set should exist for this corner.

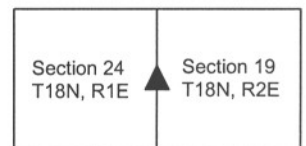
This corner was originally established as a wood post in 1819.



Kenneth E. Hedge
Kenneth E. Hedge, County Surveyor

James S. Swift
James S. Swift, IN LS 20200054
July 14, 2010

Worth Township



PHOTOGRAPHIC DOCUMENTATION

Date of photography: May 11, 2009

View of the stone as first exposed.



View of the stone more fully exposed.
View from above and east.



View from above the stone looking south along
the section line and line between Walker Farms
and the adjoining farm to the west.



View of the stone more fully exposed.
View from above and north.



For details and documentation, refer to
related sheet "Section Corner Record."

SECTION CORNER RECORD

SE 400-500

BOONE COUNTY SURVEYOR'S OFFICE

State Plane grid coordinates NAD83 (NSRS 2007):

North: 1725066.53 East: 3151280.00 (U.S. survey feet)

Type of monument: Harrison, 4" disk 'Section Corner'

Depth: One inch below adjacent road surface

Indiana tie card references:

IN02_T18NR1E23_80 IN02_T18NR1E24_72

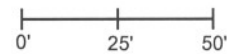
IN02_T18NR1E25_00 IN02_T18NR1E26_08

The harrison monument was set in the computed position of a rebar and in the immediate vicinity of a disturbed stone found.

A BCS record of June 17, 1882 states "Reestablished from stumps Set Rock 13,9,5 1/2 +." A BCS tie card dated June 10, 1991 shows the corner as a "1 inch rebar found 0.3' below surface in line w/ W. fence." Although this significant construction has occurred recently in the vicinity of this corner as part of the Anson development and more specifically the construction of County Road 400 South, preliminary excavation on July 23, 2009 indicated that the old road bed was not entirely removed below this corner and the possibility that the record stone was in place merited further excavation. Full excavation occurred on July 28, 2009. Prior to excavation the position for the rebar shown on the 1991 record had been computed by means of the relative positions of other monuments shown on preliminary surveys to the Anson development by American Consulting Engineers. Please refer to the record for the quarter corner to the west, SE-400-450, for details about the computation of the position of corners shown on surveys of the Anson development. Excavation revealed the cross section of the road in this area is 5 inches of new asphalt over 5 inches of modern #53 road stone, under which approximately 8 inches of the base of the old road bed still exists. The rebar was not found and was apparently removed during construction. The record stone was found at the bottom of the road bed. As originally found, the stone was at a depth of approximately 19 inches, and measured 13 inches N-S by 5 1/2 inches E-W by 9 inches tall. A clear and distinct "+" was visible at the north end of the stone. It appeared that the stone was lying on its side and had been knocked over from the south. During the excavation of other corners, it has been observed that in the latter half of the 1800s field crews from this office appear to have generally followed the procedure of setting a single stone, or the the top stone if multiple stones were set, in a vertical orientation with the etched "+" either on top, or if on the side, generally noted as such. Almost every stone found from that era is also noted to be at the bottom of the old road bed or, most often, protruding 2 to 4 inches out of the clay layer and into the road bed. Comparing the orientation of this stone with that of previous, similar stones found, this stone most definitely appeared to be lying on its side. The observation of a break in the stone on the edge which would have been the south edge prior to being knocked over, is accepted as further evidence of the the likelihood that the stone was hit on the south side by a piece of machinery and pushed over towards the north. Standing the stone up, as it may have been prior to being knocked over, the etched "+" is on the top and the top of the stone is at 15 inches deep, which would have put the stone protruding approximately 3 inches out of the clay layer and into the bottom of the road bed, and the stone is situated with a wide base at the bottom, tapering slightly towards the top. When stood up, the stone was approximately 8 inches north of the computed position for the rebar. Although it was apparent that the stone had been knocked over from the south, it was not clear whether its overall position had been compromised. It is entirely possible that the stone was pushed to the north as it was being knocked over, which indicates that the position of the rebar may be just as valid as the position of the stone as originally found. Given the clear disturbance of the stone, the immediate proximity of the position of the rebar to the stone, and the acceptance of the rebar for previous surveys, including the Anson Surveys and the 1991 tie card, the position of the rebar was held as marking the corner. The stone was removed and the harrison monument was set at the computed position of the rebar. This corner was originally established as a wood post in June, 1820.

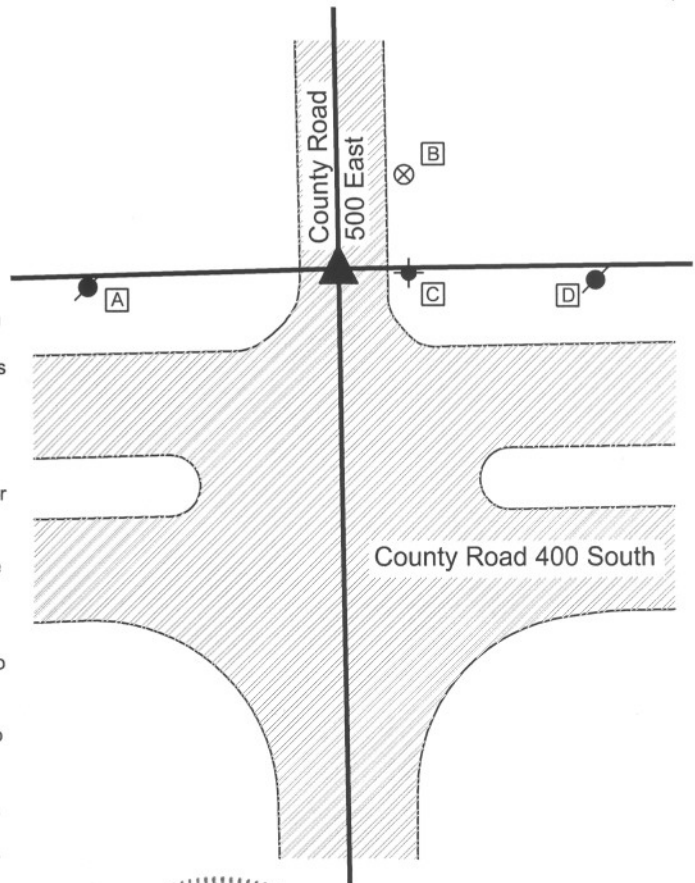
CORNER WITNESS DETAIL

SCALE 1" = 50'



- A - Boone County witness mark, flush, 29.87'
- B - Mag nail set in E. side power pole, 2.0' a.g., 63.0'
- C - Fire hydrant, N.W. base bolt, 17.30'
- D - Mag nail set in N.W. side power pole, 65.4'

Boone County witness mark is a 3/8" diameter x 2' long rebar bearing a metal cap stamped "Boone County Witness Point."



Worth Township

Section 23 T18N, R1E	Section 24 T18N, R1E
Section 26 T18N, R1E	Section 25 T18N, R1E

Kenneth E. Hedge
 Kenneth E. Hedge, County Surveyor

James S. Swift
 James S. Swift, IN LS 20200054

July 14, 2010

PHOTOGRAPHIC DOCUMENTATION

Date of photography: July 28, 2009

View of the stone as first exposed.



The stone removed from the road bed and situated in the orientation at which it was found.



The stone stood up in the orientation at which it was most likely originally set, with the etched mark on top. View from the east, looking west along the section line and north line of C.R. 400 South.



For details and documentation, refer to related sheet "Section Corner Record."

SECTION CORNER RECORD

BOONE COUNTY SURVEYOR'S OFFICE

SE 400-550

State Plane grid coordinates NAD83 (NSRS 2007):

North: 1725096.98 East: 3153947.85 (U.S. survey feet)

Type of monument: Harrison, 4" disk 'Section Corner' in concrete pillar

Depth: 2 inches above adjoining grade

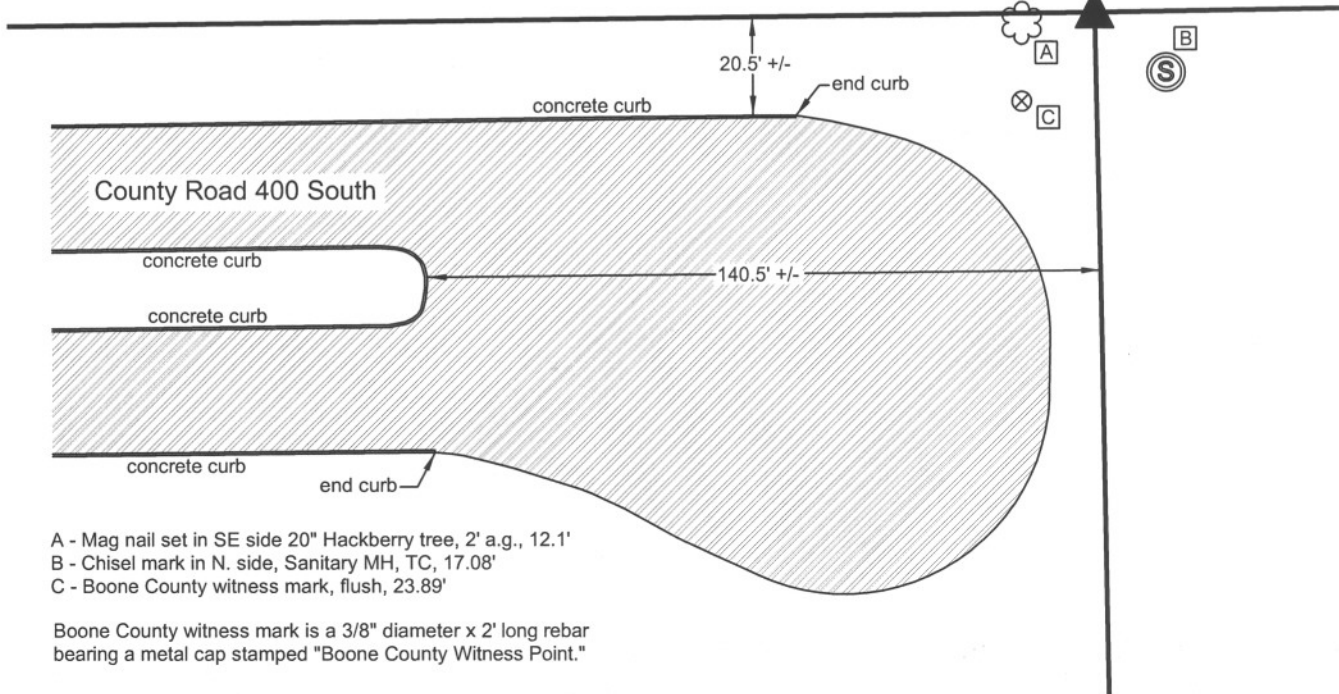
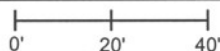
Indiana tie card references:

IN02_T18NR1E24_76

IN02_T187NR1E25_04

CORNER WITNESS DETAIL

SCALE 1" = 40'



- A - Mag nail set in SE side 20" Hackberry tree, 2' a.g., 12.1'
- B - Chisel mark in N. side, Sanitary MH, TC, 17.08'
- C - Boone County witness mark, flush, 23.89'

Boone County witness mark is a 3/8" diameter x 2' long rebar bearing a metal cap stamped "Boone County Witness Point."

The harrison monument was set in place of a rebar found.

A BCS record of June 17, 1872 states "Reestablished from stump of Beech. Set a Rock 25,12,7 +." No BCS tie cards were found for this corner. This corner was excavated on November 7 and 12, 2008. Prior to excavation, a 5/8 inch rebar bearing a yellow plastic cap stamped "Dodge" was found. A wide area was probed and investigated but the record stone was not found. Numerous small rocks were found, none of which appeared to be evidence of the corner. It is noted that recent construction associated with the development of County Road 400 South has disturbed the area, though not apparently the immediate vicinity of the rebar. A new manhole is located approximately 17 feet southeast of the rebar. No fence remains along the section line, though the previous location of the fence is evident on the ground. It appears that the recent construction extended up to but not beyond the old fence line. The rebar has been held by numerous surveys, including surveys for the Anson Development recorded in Survey Book 8, pages 23 and 24 among others. The rebar also fits well with the approximate corners to the east and west, and falls along the earthen hump which provides evidence of the old east-west fence line. The rebar was accepted as the best available evidence of the corner and the harrison monument was set in its place. This corner was originally established as a wood post in June, 1820.



Kenneth E. Hedge
Kenneth E. Hedge, County Surveyor

James S. Swift
James S. Swift, IN LS 20200054

March 11, 2009 Revised July 14, 2010

Worth Twp

Section 24
T18N, R1E

Section 25
T18N, R1E

SECTION CORNER RECORD

SE 400-600

BOONE COUNTY SURVEYOR'S OFFICE

State Plane grid coordinates NAD83 (2011):
 North: 1725133.92 East: 3156616.92 (U.S. survey feet)

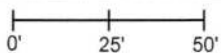
Type of monument: Iron plug in concrete, flush

Indiana tie card references:

IN02_T18NR1E24_80 IN02_T18NR1E25_08
 IN02_T18NR2E19_72 IN02_T18NR2E30_00

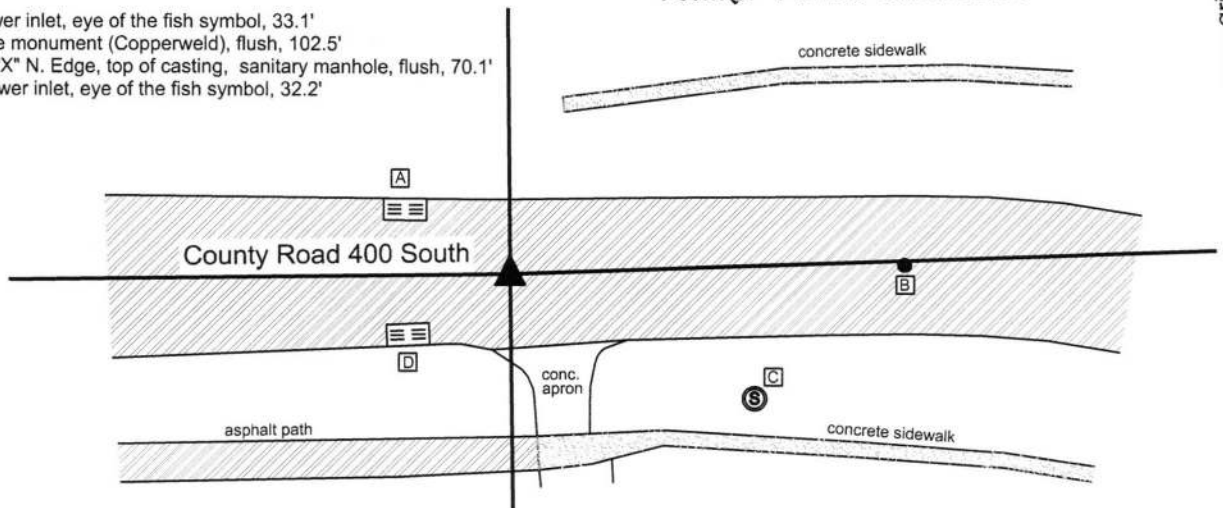
- A - Storm sewer inlet, eye of the fish symbol, 33.1'
- B - Center line monument (Copperweld), flush, 102.5'
- C - Chiseled "X" N. Edge, top of casting, sanitary manhole, flush, 70.1'
- D - Storm sewer inlet, eye of the fish symbol, 32.2'

CORNER WITNESS DETAIL

SCALE 1" = 50' 



Walker Farms Subdivision

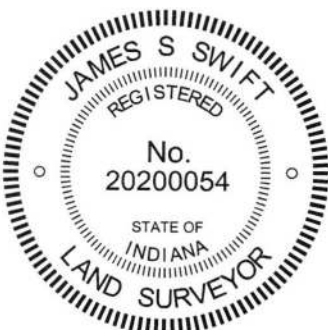


This corner was previously documented by this office on July 14, 2010. Since that date, the Harrison monument at the corner was removed during road construction and replaced with an iron pin in concrete.

The 2010 documentation is as follows:

The Harrison monument was set in place of a Harrison monument found.

A BCS record of July 8, 1881 states "Established by running line from E to F in Sect 19....Set Rock 10,8,6 marked +." A BCS tie card dated May 11, 1970 states "No stone, Set Rail." This tie card references the corner as being the northeast corner of section 25, township 18 north, range 1 east. The card shows this corner as being situated in the center of County Road 400 South and also shows an apparent corner one rod (16.5 feet) north and states "Stone for NW corner of Sec 30 T18N R2E?" The question mark shown in the quote is per the tie card. The field crew evidently found a rock one rod north of the center of the road and concluded that the standard corner fell in the road and the closing corner fell to the north, monumented by the rock. However, the original federal surveyors did not establish two corners at this point. The transcribed government field notes for the closing corner state "West Between Secs 19 & 30 82.88 Intersected West line at post...." Hence, the reference in the 1970 tie card to the closing corner being one rod north of the standard corner is erroneous, as was perhaps known at the time, as evidenced by the question mark. Analysis of the geometry of the proximate lines and corners of the Public Land Survey System in this area yields ample evidence that this corner should fall within County Road 400 South rather than north of it. This corner was excavated on July 29, 2009. Prior to excavation a Harrison monument was found in the approximate center of County Road 400 South at a position which fits that shown for the railroad rail on the 1970 tie card with respect to the center of the road, the fence to the north and the fence to the south 49.5 feet east. No documentation was found for the source of the Harrison. Excavation revealed no further evidence below or in the vicinity of the Harrison. The area of excavation was 12 feet N-S by 12 feet E-W, centered on the Harrison. Based on the references shown on the 1970 tie card, the rail would have definitely fallen within this area of excavation. The road bed in this area is very shallow, being only 6 to 9 inches of gravel, below which is the clay layer. If the record stone had been set in a similar manner to many other stones found from the same era, it would have been embedded in the clay, protruding 2 to 4 inches into the bottom of the road, putting it well within the range of the blade or teeth of a road grader. The fact that the rail is not present indicates that it was probably hit by a road grader and removed. As the Harrison monument was the only physical evidence found and it fits the references on the 1970 tie card, it was held as marking the corner. A new Harrison monument was set in its place approximately 8 inches below grade. The stone shown on the 1970 tie card was not found and was likely removed during the installation of an electric transformer box servicing the Walker Farms development to the north and east. It is noted that the preliminary survey to the Walker Farms development, Survey Book 4, page 67, holds the stone for the S.W. corner of section 19, stating "stone found per Co. Surveyor's ties." As noted above, this stone is not considered the corner. The reference to the tie card does not note the question mark attached to this reference. It is noted that this survey does hold County Road 400 South, extended east to the intersection with County Road 650 East, as the south quarter corner. It is also noted that the stone at the west quarter corner of section 19 was found at the midpoint of the line between the northwest corner, in County Road 300 South and southwest corner, in County Road 400 South. Please refer to the record for corner SE-350-600 for discussion of this stone.




 Kenneth E. Hedge, County Surveyor


 James S. Swift, IN LS 20200054

July 14, 2010 - revised March 23, 2016

Worth Township

Section 24 T18N, R1E	Section 19 T18N, R2E
Section 25 T18N, R1E	Section 30 T18N, R2E