

SECTION CORNER RECORD

NW 800-700

BOONE COUNTY SURVEYOR'S OFFICE

State Plane grid coordinates NAD83 (CORS96):

North: 1787883.15 East: 3087831.72 (U.S. survey feet)

Type of monument: Harrison, 4" disk 'Section Corner'

Depth: flush with adjacent road surface

Indiana tie card references:

IN02_T20NR2W23_80 IN02_T20NR2W24_72

IN02_T20NR2W26_08 IN02_T20NR2W25_00

CORNER WITNESS DETAIL

SCALE 1" = 40'



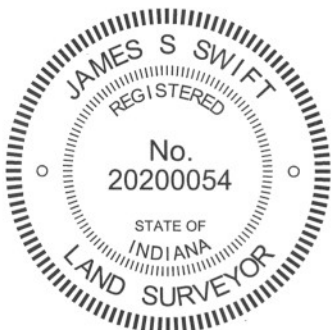
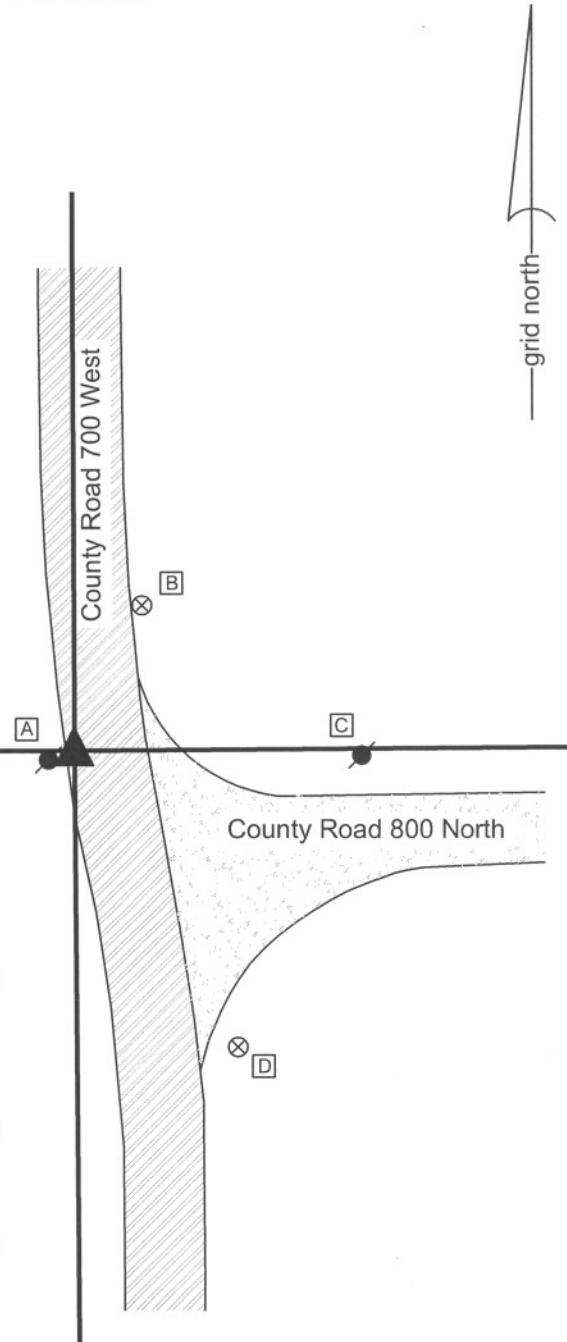
- A - Mag nail set in E. side power pole, 10 in. a.g., 3.04'
- B - Boone County witness mark, flush, 33.32'
- C - Mag nail set in W. side power pole, 2' a.g., 57.76'
- D - Boone County witness mark, flush, 70.36'

Boone County witness mark is a 3/8" diameter x 2' long rebar bearing a metal cap stamped "Boone County Witness Point."

The harrison monument was set over a vertical section of railroad rail found. No specific descriptions of this corner were found in the BCS Surveyor's Record beyond the original establishment of the corner as a wood post in 1829. The corner is shown on records of 1832, but not described. It is shown as the terminal point for measurements on records of 1889 and 1907. A BCS tie card dated October 2, 1964 states 'pile 3" x 5" stones found. RRR set.'

This corner was excavated on March 29, 2011 in response to questions about GIS parcel mapping in the vicinity. Prior to excavation a PK nail was found at the edge of County Road 700 West, in line with the southerly prolongation of the center of the road to the north and in line with the westerly prolongation of a fence to the west. The nail was removed and a rebar with a plastic cap stamped "Witness Point" was found below. The rebar was bent. The rebar was removed and a vertical section of railroad rail was found and 16 inches deep. The position of the rail was slightly northeast of the nail. The rail was accepted as being the monument called for on the 1964 tie card, set in place of the 'pile of stones.'

The deeds for several parcels in this immediate vicinity call for the east-west section line to be along the approximate north right-of-way of County Road 800 North and call for the north-south section line to the south of the corner as being along the approximate west right-of-way line of County Road 700 West. The position of the rail fit with this description and also fit with occupation and monumentation, relative to deed ties to the corner, for properties to the north and south of the corner. The railroad rail was held as marking the corner and was left in place. The harrison monument was set directly over the rail.



Kenneth E. Hedge
 Kenneth E. Hedge, County Surveyor

James S. Swift
 James S. Swift, IN LS 20200054
 March 30, 2012

Sugar Creek Township

Section 23 T20N, R2W	Section 24 T20N, R2W
Section 26 T20N, R2W	Section 25 T20N, R2W

SECTION CORNER RECORD

NW 800-750

BOONE COUNTY SURVEYOR'S OFFICE

State Plane grid coordinates NAD83 (2011):
North: 1787948.07 East: 3085150.67 (U.S. survey feet)

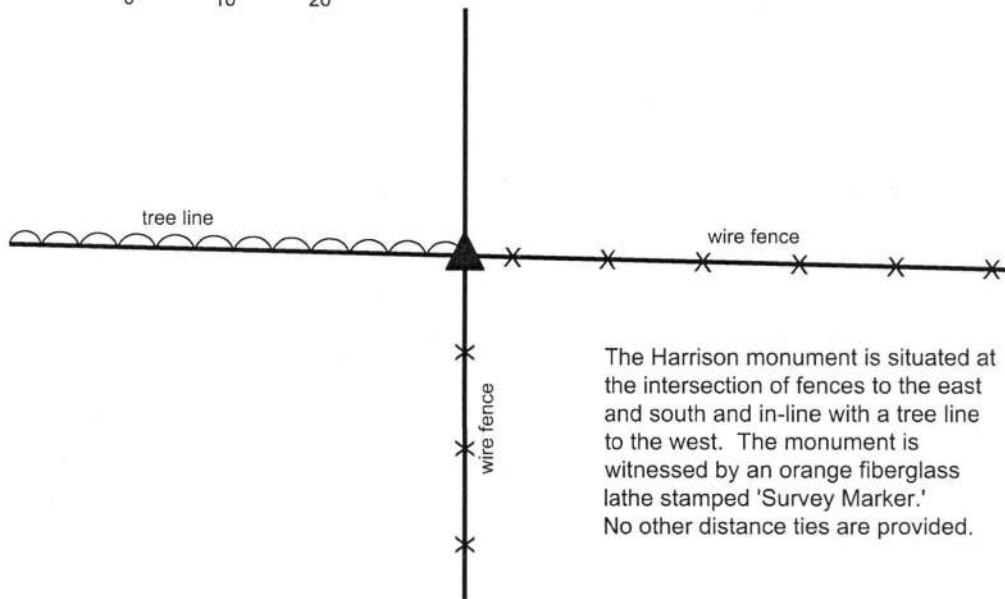
Type of monument: Harrison, 4" disk 'Section Corner'
Depth: Three inches above adjacent ground

Indiana tie card references:
IN02_T20NR2W23_76 IN02_T20NR2W26_04



CORNER WITNESS DETAIL

SCALE 1" = 20'
0' 10' 20'



The Harrison monument is situated at the intersection of fences to the east and south and in-line with a tree line to the west. The monument is witnessed by an orange fiberglass lathe stamped 'Survey Marker.' No other distance ties are provided.

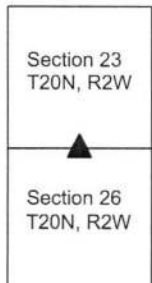
The Harrison monument was set in place of a wood corner post found. No specific descriptions of this corner were found in the BCS Surveyor's record beyond the original establishment of the corner as a wood post in 1829. No recent BCS tie cards were found referencing the corner. A survey by Ronald E. Wharry dated October 31, 2007 shows the corner as a wood head post. This corner was excavated on October 24, 2018. Prior to excavation, the approximate position of the corner was determined at the intersection of standing fences immediately to the east and south. No corner post was observed standing and the physical corner post was found lying on the ground nearby. The position of the post as shown on the Wharry survey fit well with the position of the corner determined by the standing fences. Excavation revealed a substantial concrete base in which the post had clearly been situated previously. In the center of the concrete base was square hole of 7 inches E-W by 7 inches N-S, matching the dimensions of the post found lying on the ground. Several rocks were found in the vicinity of the corner, none of which appeared to have been purposely set to mark the corner. The position of the post, as evidenced by the concrete base and confirmed by the Wharry survey, was accepted as the best available evidence of the corner. The interior of the hole in the concrete base was excavated to one foot deep and four two-foot lengths of 3/8 inch rebars were driven into the remaining packed dirt within the hole. The hole was filled with concrete, a short section of 8 inch diameter HDPE storm pipe was set vertically over the concrete base and a Harrison monument was set within this section of pipe, above and slightly into the center of hole marking the former position of the post.



Kenneth E. Hedge
Kenneth E. Hedge, County Surveyor

James S. Swift
James S. Swift, IN LS 20200054
November 28, 2018

Sugar Creek Twp



SECTION CORNER RECORD

NW 850-700

BOONE COUNTY SURVEYOR'S OFFICE

State Plane grid coordinates NAD83 (2011):

North: 1790536.17 East: 3087821.02 (U.S. survey feet)

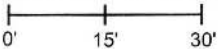
Type of monument: Harrison, 4" disk 'Section Corner'

Depth: four inches below adjacent gravel road surface

Indiana tie card references:

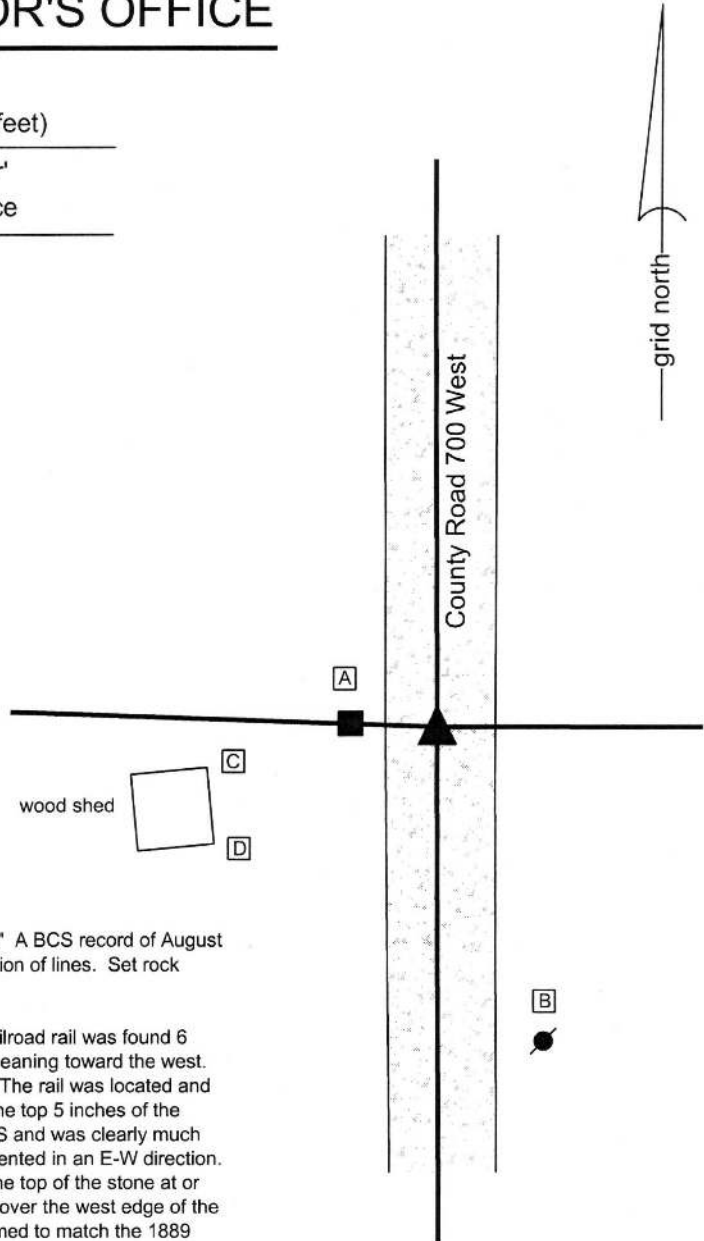
IN02_T20NR2W23_44 IN02_T20NR2W24_36

CORNER WITNESS DETAIL

SCALE 1" = 30' 

- A - Mag nail set in E. side wood post, 0.7' a.g., 12.2'
- B - Mag nail set in W. side power pole, 2' a.g., 51.3'
- C - N.E. corner, foundation of shed, flush, 36.3'
- D - S.E. corner, foundation of shed, flush, 39.1'

Boone County witness mark is a 3/8" diameter x 2' long rebar bearing a metal cap stamped "Boone County Witness Point."



The Harrison monument was set over a stone found.

A BCS record of September 25, 1860 calls this corner a "Large Rock." A BCS record of August 13, 1889 states, with respect to this corner, Reestablished at intersection of lines. Set rock 18-12-14 corner."

A BCS tie card dated October 6, 1971 states "Stone Located."

This corner was excavated on June 4, 2015. Prior to excavation, a railroad rail was found 6 inches deep in the center of the gravel road. The rail appeared to be leaning toward the west. Excavation revealed that the rail was leaning over the top of a stone. The rail was located and removed. The stone was determined to be at 14 inches deep. With the top 5 inches of the stone exposed, it was found to measure 8 inches E-W by 7 inches N-S and was clearly much larger. The stone appeared to have a chiseled line across the top, oriented in an E-W direction. The stone was fully embedded in the clay layer below the road, with the top of the stone at or near the bottom of the road bed. The top of the rail had been leaning over the west edge of the stone. Though the dimensions of the stone were not positively confirmed to match the 1889 record, the position of the stone fit with the 1971 distance ties and fit with local evidence of the corner in the form of the center of the N-S County Road and old fence corner posts on the east and west sides of the road.

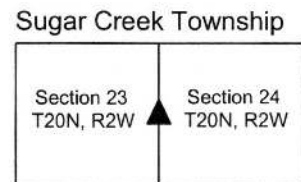
The stone was held as marking the corner and a Harrison monument was set over the top, center of the stone. The high point of the leaning rail, removed during excavation, had been approximately 0.5 foot west of the top, center of the stone.

This corner was originally established as a wood post in 1829.



Kenneth E. Hedge
 Kenneth E. Hedge, County Surveyor

James S. Swift
 James S. Swift, IN LS 20200054
 March 28, 2016



SECTION CORNER RECORD

NW 850-800

BOONE COUNTY SURVEYOR'S OFFICE

State Plane grid coordinates NAD83 (2011):

North: 1790720.76 East: 3082480.25 (U.S. survey feet)

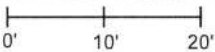
Type of monument: Harrison, 4" disk 'Section Corner'

Depth: Three inches above adjacent ground

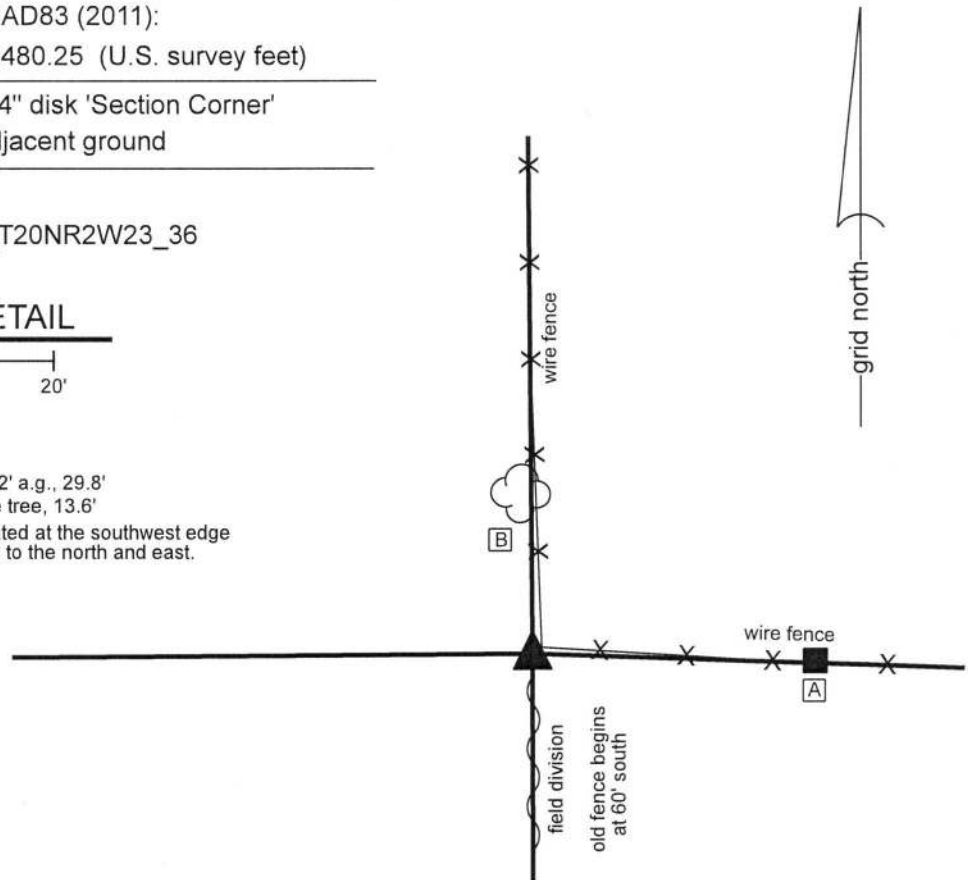
Indiana tie card references:

IN02_T20NR2W22_44 IN02_T20NR2W23_36

CORNER WITNESS DETAIL

SCALE 1" = 20' 

- A - Mag nail set in S. side wood post, 2' a.g., 29.8'
 - B - South side 14 inch diameter maple tree, 13.6'
- Note: the Harrison monument is situated at the southwest edge of a wood post at the corner of fences to the north and east.

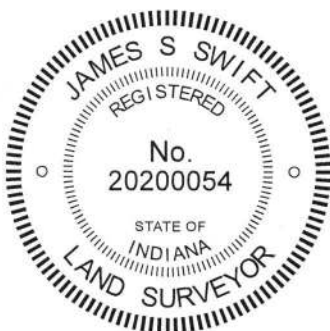


The Harrison monument was set over a stone found.


No specific descriptions of this corner were found in the BCS Surveyor's Record beyond the original establishment of the corner as a wood post in 1829. The corner is mentioned as the terminal point for measurements in records of 1847, 1852, 1910 and 1912, indicating that some monument, typically a stone, was present from which to measure at those times. No recent BCS tie cards or recorded surveys were found referencing the corner.

This corner was excavated on October 25, 2018. Prior to excavation, a wood corner post was found at the intersection of standing fences to the north and east. It is noted that the post does not appear to be ancient and is evidently of the same age as the posts to the north and east. It is also noted that the post appears to be slightly northeast of the overall fence lines in both the north and east directions, in that both fences appear to deflect slightly as they approach the corner. Excavation around the post revealed a stone found at 3 feet deep, slightly southwest of the post. The stone does not appear to be bracing the post and is more in-line with the overall fence lines than is the corner post. The stone is also in line with ancient fencing which was found beginning at approximately 60 feet south of the corner. During excavation, fragments of wood which appeared in the field to be the remnants of an ancient post were found from 12 inches deep to 30 inches deep, situated adjacent to and slightly north of the found stone.

The stone has a flat top, 10 inches N-S by 8 inches E-W. No specific marks were found. The height of the stone was not measured. It is noted that the top of the stone is coincident with the top of the clay layer below the top soil, in character with numerous other stones found marking other corners throughout the county. It is also noted that the depth of the top soil, 3 feet, is deeper than is typically found throughout the county. The stone, being adjacent to the corner post but in-line with the overall fences, adjacent to evident fragments of an older post and being embedded in the clay layer below the top soil with the top of the stone being flat and horizontal, was accepted as providing the best available evidence of the original position of the corner and was held as marking the corner. The stone was left in place and a Harrison monument was set directly over the top, center of the stone.




 Kenneth E. Hedge, County Surveyor


 James S. Swift, IN LS 20200054
 December 12, 2018

Sugar Creek Twp

Section 22 T20N, R2W	Section 23 T20N, R2W
-------------------------	-------------------------

SECTION CORNER RECORD

NW 900-700

BOONE COUNTY SURVEYOR'S OFFICE

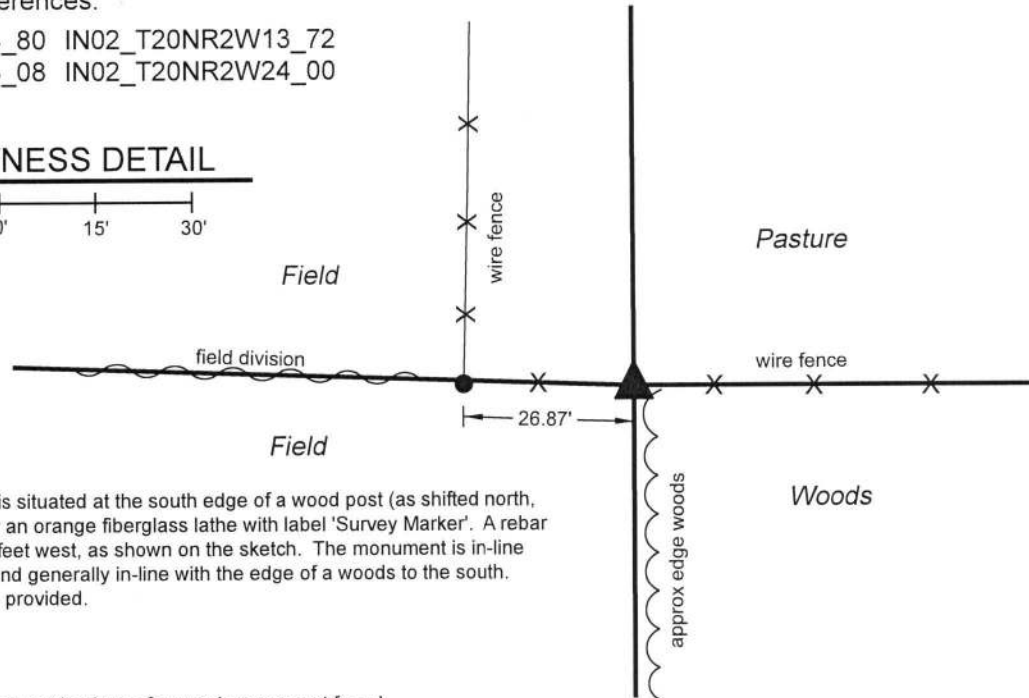
State Plane grid coordinates NAD83 (2011):
North: 1793194.95 East: 3087813.28 (U.S. survey feet)

Type of monument: Harrison, 4" disk 'Section Corner'
Depth: Three inches above adjacent ground

Indiana tie card references:
IN02_T20NR2W14_80 IN02_T20NR2W13_72
IN02_T20NR2W23_08 IN02_T20NR2W24_00

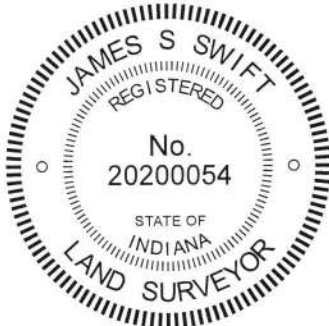
CORNER WITNESS DETAIL

SCALE 1" = 30'
0' 15' 30'



The Harrison monument is situated at the south edge of a wood post (as shifted north, see below), witnessed by an orange fiberglass lathe with label 'Survey Marker'. A rebar with yellow cap is 26.87' feet west, as shown on the sketch. The monument is in-line with an east west fence and generally in-line with the edge of a woods to the south. No other distance ties are provided.

The Harrison monument was set in place of a wood corner post found. A BCS record dated May 8, 1873 states, with respect to this corner, "Reestablished. Set a Rock 14.13.6 +." No recent BCS tie cards were found referencing this corner. A survey by Jerry L. Carter, LS S0350, recorded as document 0303136 in the Office of the Boone County Surveyor, shows the corner as a head post and shows a rebar with cap 26.87 feet to the west. This corner was excavated on November 7, 2018. Prior to excavation, the post and rebar called in the Carter survey were found as shown on the survey. Excavation in the vicinity of the post revealed numerous rocks and a variety of rubble, including broken pieces of concrete. One notable stone was found at 17 inches deep, below most of the rubble. The top of the stone measured 18 inches E-W by 9 inches N-S. The height of the stone was not measured. The center of the top of the stone was 16 inches south of the post. The stone does not match the dimensions called in 1873 record and did not appear to be a stone purposely set to mark the corner. The stone was not accepted as marking the corner. The post fits well with the relative positions of other proximate corners and falls in line with a fence to the east and the edge of a wood line to the south. The Carter survey shows the post to be in line with a fence to the south. The fence has evidently been removed since the survey was made, but the post and approximate wood line fall generally in line with the prolongation of the center of County Road 700 West, beginning approximately 1/4 mile south of the corner. The Carter survey also shows the post in line with a N-S fence beginning 495 feet north of the corner. The post was accepted as providing the best available evidence of the corner. The post was broken at ground level but standing as supported by the fencing to the east and west. The top portion of the post was pushed toward the north and stabilized by a 5/8 inch rebar driven along the south edge of the post, as shifted to the north. The portion of the post remaining in the ground was found to be mostly rotten. This portion was removed and a replaced with a Harrison monument. It is noted that the monument is situated in the precise position of the center of the post, as originally found, and that the remaining portion of the post, suspended amongst the fencing, is north of its original position. It is also noted that a fence bearing north from the rebar found 26.87 feet west of the corner does not fall along the section line. This is clearly demonstrated on the Carter survey. The land descriptions for numerous properties to the northwest, northeast and southeast contain similar language to the description contained in the Carter survey and appear to hold the post as the corner. Hence the presence of the north-south fence west of the section line is not considered an uncertainty. This corner was originally established as a wood post in 1829.



Kenneth E. Hedge
Kenneth E. Hedge, County Surveyor

James S. Swift
James S. Swift, IN LS 20200054
January 23, 2019

Sugar Creek Township

Section 14 T20N, R2W	Section 13 T20N, R2W
Section 23 T20N, R2W	Section 24 T20N, R2W

SECTION CORNER RECORD

NW 900-750

BOONE COUNTY SURVEYOR'S OFFICE

State Plane grid coordinates NAD83 (2011):

North: 1793286.14 East: 3085133.62 (U.S. survey feet)

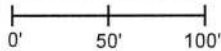
Type of monument: 5/8 inch rebar in concrete with metal cap stamped 'Boone County Surveyor'
Depth: One inch below adjacent ground.

Indiana tie card references:

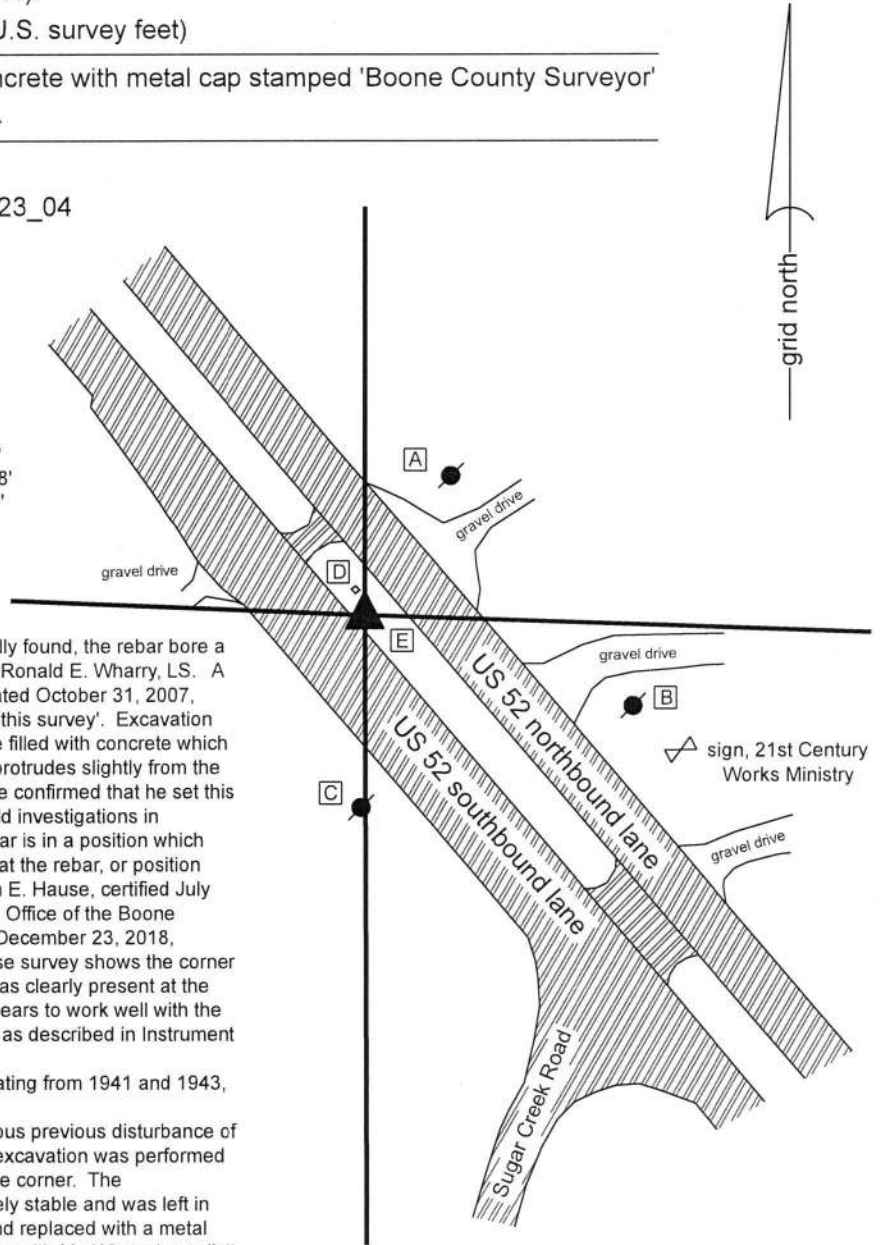
IN02_T20NR2W14_76 IN02_T20NR2W23_04

CORNER WITNESS DETAIL

SCALE 1" = 100'



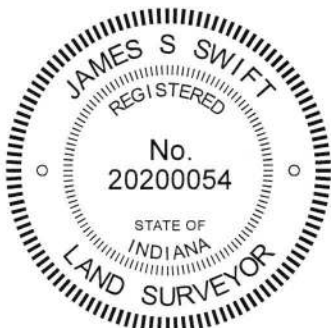
- A - Mag Nail set in W. side power pole, 2' a.g., 81.3'
- B - Mag Nail set in W. side power pole, 2' a.g., 142.8'
- C - Mag nail set in E. side power pole, 2' a.g., 100.0'
- D - Southerly corner, drain inlet casting, flush, 12.3'
- E - Rebar, yellow cap, 6.9' east (see notes)



The rebar in concrete was found in place. As originally found, the rebar bore a yellow plastic cap stamped R.E.W. S0420, indicating Ronald E. Wharry, LS. A survey by Mr. Wharry of adjoining land to the west, dated October 31, 2007, shows the corner as being a 'concrete monument set this survey'. Excavation around the rebar indicates that it is set in a pvc sleeve filled with concrete which extends to at least 3 feet deep. The top of the rebar protrudes slightly from the top of the concrete. Mr. Wharry was contacted and he confirmed that he set this monument per evidence from the north and east. Field investigations in November and December, 2018 confirm that the rebar is in a position which works well with the available evidence. It is known that the rebar, or position thereof, has been held by recent surveys by Jonathon E. Hause, certified July 26, 2018, recorded in Survey Book 18, page 39 in the Office of the Boone County Recorder and James Reese Harpel, certified December 23, 2018, recorded in Survey Book 18, page 95 (note: the Hause survey shows the corner as calculated position, though the rebar in concrete was clearly present at the time of the survey). The position of the rebar also appears to work well with the description of the adjoining property to the southeast, as described in Instrument 20130000635 in the Boone County Recorder's Office.

Plans for U.S. Highway 52, supplied by INDOT and dating from 1941 and 1943, do not show a specific location for the corner. Due to the position in the median of U.S. 52 and obvious previous disturbance of the ground in the vicinity of the corner, no significant excavation was performed at this corner. The rebar was accepted as marking the corner. The rebar-in-concrete type monument appears to be entirely stable and was left in place. The plastic cap of Mr. Wharry was removed and replaced with a metal cap stamped 'Boone County Surveyor.' This was done with Mr. Wharry's explicit knowledge and consent.

It is noted that another rebar, also bearing the cap of Mr. Wharry, is situated immediately east of the corner at 6.9 feet. The westerly of the two rebars is the corner.



Kenneth E. Hedge
Kenneth E. Hedge, County Surveyor

James S. Swift
James S. Swift, IN LS 20200054
February 12, 2019

Sugar Creek Township

Section 14
T20N, R2W

Section 23
T20N, R2W

SECTION CORNER RECORD

NW 900-800

BOONE COUNTY SURVEYOR'S OFFICE

State Plane grid coordinates NAD83 (2011):

North: 1793394.53 East: 3082457.39 (U.S. survey feet)

Type of monument: Harrison, 4" disk 'Section Corner'

Depth: Flush with adjacent ground

Indiana tie card references:

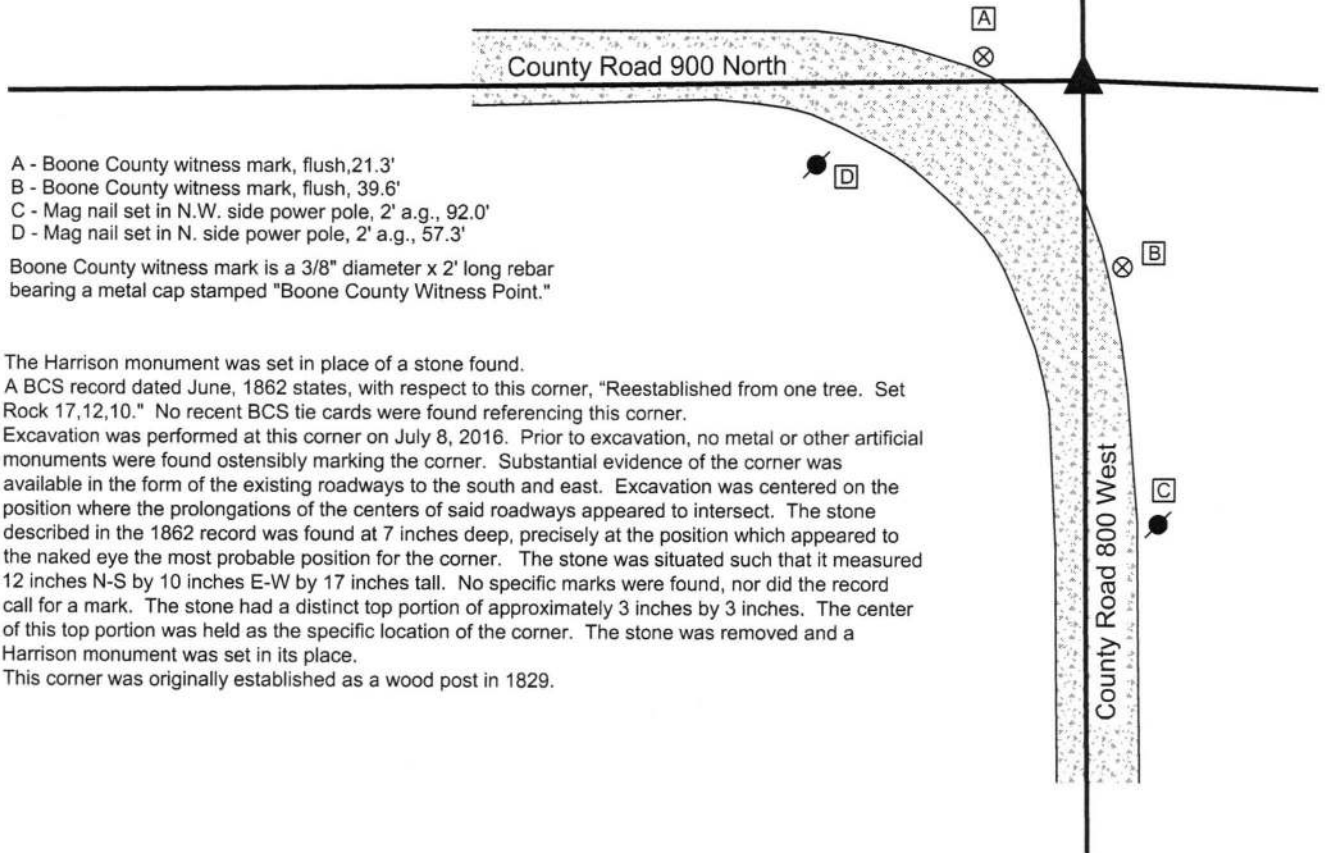
IN02_T20NR2W5_80 IN02_T20NR2W14_72

IN02_T20NR2W22_08 IN02_T20NR2W23_00



CORNER WITNESS DETAIL

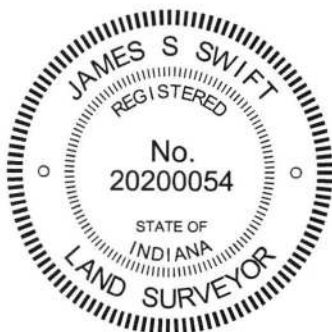
SCALE 1" = 40'



- A - Boone County witness mark, flush, 21.3'
- B - Boone County witness mark, flush, 39.6'
- C - Mag nail set in N.W. side power pole, 2' a.g., 92.0'
- D - Mag nail set in N. side power pole, 2' a.g., 57.3'

Boone County witness mark is a 3/8" diameter x 2' long rebar bearing a metal cap stamped "Boone County Witness Point."

The Harrison monument was set in place of a stone found. A BCS record dated June, 1862 states, with respect to this corner, "Reestablished from one tree. Set Rock 17,12,10." No recent BCS tie cards were found referencing this corner. Excavation was performed at this corner on July 8, 2016. Prior to excavation, no metal or other artificial monuments were found ostensibly marking the corner. Substantial evidence of the corner was available in the form of the existing roadways to the south and east. Excavation was centered on the position where the prolongations of the centers of said roadways appeared to intersect. The stone described in the 1862 record was found at 7 inches deep, precisely at the position which appeared to the naked eye the most probable position for the corner. The stone was situated such that it measured 12 inches N-S by 10 inches E-W by 17 inches tall. No specific marks were found, nor did the record call for a mark. The stone had a distinct top portion of approximately 3 inches by 3 inches. The center of this top portion was held as the specific location of the corner. The stone was removed and a Harrison monument was set in its place. This corner was originally established as a wood post in 1829.



Kenneth E. Hedge, County Surveyor

James S. Swift, IN LS 20200054
March 23, 2017

Sugar Creek Township

Section 15 T20N, R2W	Section 14 T20N, R2W
Section 22 T20N, R2W	Section 23 T20N, R2W

PHOTOGRAPHIC DOCUMENTATION

Date of photography: July 8, 2016

The stone as it was originally exposed.



The stone more fully exposed.



View from approximately above the stone looking west along County Road 900 North.



View from approximately above the stone looking south along County Road 800 West.



For details and documentation, refer to related sheet "Section Corner Record."