

SECTION CORNER RECORD

NW 800-100

BOONE COUNTY SURVEYOR'S OFFICE

State Plane grid coordinates NAD83 (CORSS96):

North: 1787910.37 East: 3119517.40 (U.S. survey feet)

Type of monument: Harrison, 4" disk 'Section Corner'

Depth: One inch below adjacent road surface

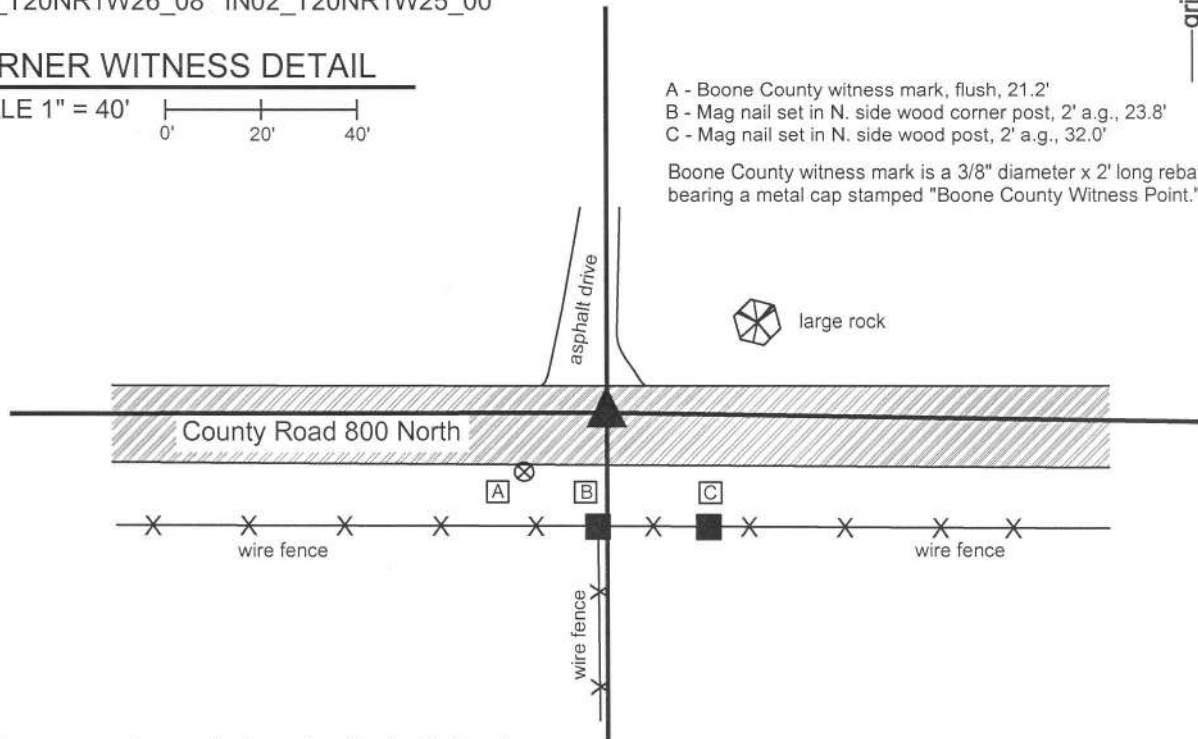
Indiana tie card references:

IN02_T20NR1W23_80 IN02_T20NR1W24_72

IN02_T20NR1W26_08 IN02_T20NR1W25_00

CORNER WITNESS DETAIL

SCALE 1" = 40'



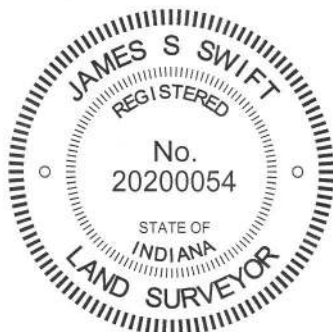
- A - Boone County witness mark, flush, 21.2'
- B - Mag nail set in N. side wood corner post, 2' a.g., 23.8'
- C - Mag nail set in N. side wood post, 2' a.g., 32.0'

Boone County witness mark is a 3/8" diameter x 2' long rebar bearing a metal cap stamped "Boone County Witness Point."

The Harrison monument was set in place of a railroad spike found.

A BCS record of August 25th 1859 states, with respect to this corner, "Rock from which another Rock 48 [links], N 28 1/2 E, 60 [links]." A BCS record of August 21, 1893 states "witness rock here." No recent BCS tie cards were found referencing this corner.

Excavation was performed at this corner on June 16, 2014. Prior to excavation, a railroad spike was found at the surface of the road, slightly north of the physical center of the road. A large rock was nearby, at approximately 60 links distance. The azimuth from the railroad spike to the rock was more like 58 degrees, than 28 degrees. This rock did not bear the characteristics of a "witness stone." Excavation of an area extending 2 feet north, 2 feet east, 4.5 feet south and 4.5 feet west of the railroad spike yielded no further evidence of the corner. Excavation was performed in an area sufficiently large to include the center of the road at the approximate intersection of the fence to the south and the center of the road at 60 links distance from the aforementioned large rock. The bottom of the road bed is at approximately 1 foot, under which a grey clay layer exists to about 16 inches. From 16 inches and deeper, a brown clay exists. Excavation was performed to at least 20 inches deep. The source of the railroad spike is not known and no explanation is offered as to why the stone which was known to exist in 1859 and 1893 was not found. The railroad spike fits with with adjacent section corners, is called for as marking the corner for some adjoining properties and is believed to represent the position of the corner from which other adjacent properties were described. It is noted that a position being S28°W, 60 links from the aforementioned large rock would fall well south of the roadway and would not fit with any of the local evidence of the corner. As no contrary evidence was found, the railroad spike was held as marking the corner. The railroad spike was removed during excavation and replaced with a Harrison monument set in the same position. This corner was originally established as a wood post in 1822.



Kenneth E. Hedge
 Kenneth E. Hedge, County Surveyor

James S. Swift
 James S. Swift, IN LS 20200054
 March 27, 2015

Washington Township

Section 23 T20N, R1W	Section 24 T20N, R1W
Section 26 T20N, R1W	Section 25 T20N, R1W

SECTION CORNER RECORD

NW 800-150

BOONE COUNTY SURVEYOR'S OFFICE

State Plane grid coordinates NAD83 (CORS96):

North: 1787907.36 East: 3116882.19 (U.S. survey feet)

Type of monument: Harrison, 4" disk 'Section Corner'

Depth: One inch below adjacent road surface

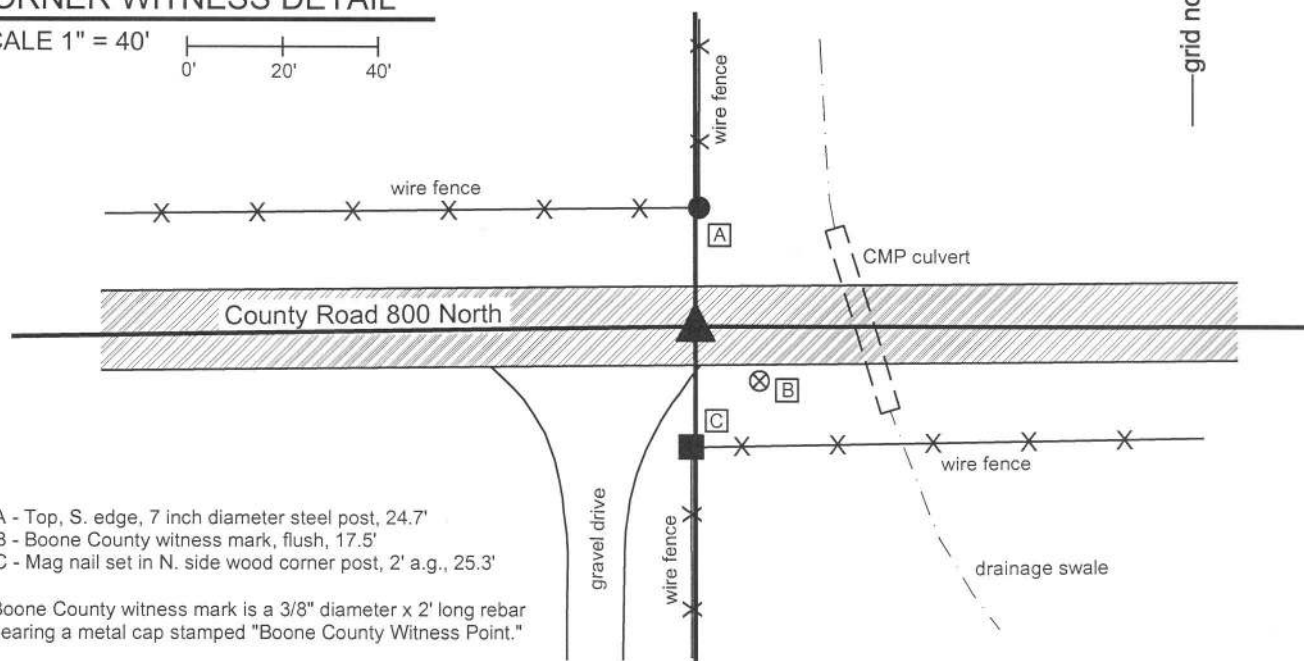
Indiana tie card references:

IN02_T20NR1W23_76 IN02_T20NR1W26_04

CORNER WITNESS DETAIL

SCALE 1" = 40'

0' 20' 40'



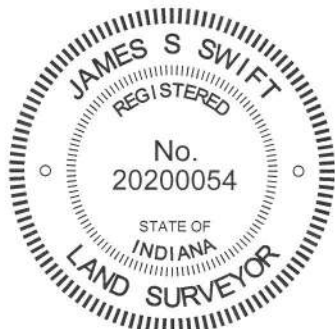
- A - Top, S. edge, 7 inch diameter steel post, 24.7'
- B - Boone County witness mark, flush, 17.5'
- C - Mag nail set in N. side wood corner post, 2' a.g., 25.3'

Boone County witness mark is a 3/8" diameter x 2' long rebar bearing a metal cap stamped "Boone County Witness Point."

The Harrison monument was set in place of a railroad spike which was set in place of a Mag nail found.

A BCS record dated November 28, 1885 states, with respect to this corner, "Found from Oak wit (gov) and rock already there. Set 15,18.12 no mark." No recent BCS tie cards were found referencing this corner.

Significant excavation was not performed at this corner due to obvious presence of significant amounts of fill material associated with the culvert for a drainage ditch crossing the road immediately to the east of the corner. Minor excavation was performed on June 16, 2014. At that time, a Mag nail found at the surface of the road was removed and the area under the nail was excavated. No metal monument or any other evidence of the corner was found below the Mag nail. It was observed that the Mag nail was in the center of the east-west roadway, slightly east of the fence to the south and slightly west of the fence to the north. The source of the Mag nail is not known. The nail was temporarily replaced with a railroad spike in the same position, pending review of the relative position of the found Mag nail and monumentation marking adjoining properties. Further research and field work yielded the observation that position of the Mag nail fit very well with the descriptions and monumentation to the west in both sections 23 and 26. Having confirmed this position for the corner and having found no contrary evidence, the position of the Mag nail as originally found was held as marking the corner. On October 21, 2014 the railroad spike which had been temporarily marking the position of the corner was removed and replaced with a Harrison monument. This corner was originally established as a wood post in 1822.



Kenneth E. Hedge, County Surveyor

James S. Swift, IN LS 20200054
March 27, 2015

Washington
Township

Section 23
T20N, R1E

Section 26
T20N, R1E

SECTION CORNER RECORD

NW 800-200

BOONE COUNTY SURVEYOR'S OFFICE

State Plane grid coordinates NAD83 (CORS96):

North: 1787863.62 East: 3114216.80 (U.S. survey feet)

Type of monument: Harrison, 4" disk 'Section Corner'

Depth: One inch below adjacent road surface

Indiana tie card references:

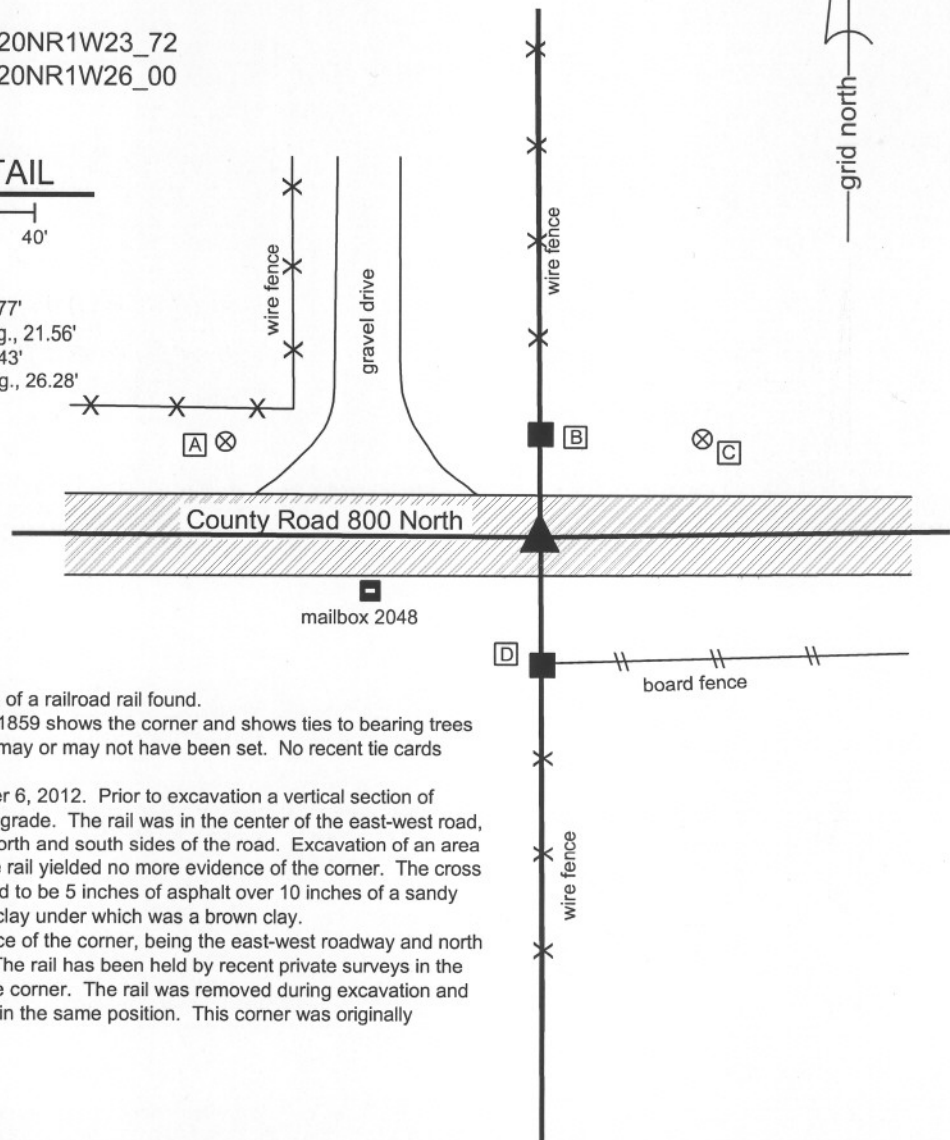
IN02_T20NR1W22_80 IN02_T20NR1W23_72

IN02_T20NR1W27_08 IN02_T20NR1W26_00

CORNER WITNESS DETAIL

SCALE 1" = 40'
0' 20' 40'

- A - Boone County witness mark, flush, 68.77'
- B - Mag nail set in E. side wood post, 1' a.g., 21.56'
- C - Boone County witness mark, flush, 39.43'
- D - Mag nail set in N. side wood post, 1' a.g., 26.28'



The harrison monument was set in place of a railroad rail found.

A record of A BCS record of August 25, 1859 shows the corner and shows ties to bearing trees but does not state what monumentation may or may not have been set. No recent tie cards have been found referencing this corner.

This corner was excavated on September 6, 2012. Prior to excavation a vertical section of railroad rail was found at 4 inches below grade. The rail was in the center of the east-west road, opposite the wood corner posts on the north and south sides of the road. Excavation of an area 5 feet N-S by 5 feet E-W centered on the rail yielded no more evidence of the corner. The cross section of the road at this point was found to be 5 inches of asphalt over 10 inches of a sandy gravel material over 10 inches of a blue clay under which was a brown clay.

The railroad rail fits with the local evidence of the corner, being the east-west roadway and north south fences on each side of the road. The rail has been held by recent private surveys in the vicinity. The rail was held as marking the corner. The rail was removed during excavation and was replaced with a harrison monument in the same position. This corner was originally established as a wood post in 1829.



Kenneth E. Hedge
 Kenneth E. Hedge, County Surveyor

James S. Swift
 James S. Swift, IN LS 20200054
 November 5, 2012

Washington Township

Section 22 T20N, R1W	Section 23 T20N, R1W
Section 27 T20N, R1W	Section 26 T20N, R1W

SECTION CORNER RECORD

BOONE COUNTY SURVEYOR'S OFFICE

NW 850-200

State Plane grid coordinates NAD83 (CORS96):

North: 1790528.08 East: 3114197.24 (U.S. survey feet)

Type of monument: Harrison, 4" disk 'Section Corner'

Depth: four inches below adjacent gravel road surface

Indiana tie card references:

IN02_T20NR1W22_44

IN02_T20NR1W23_36

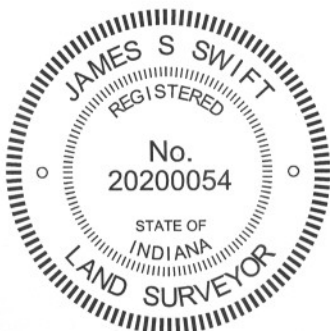
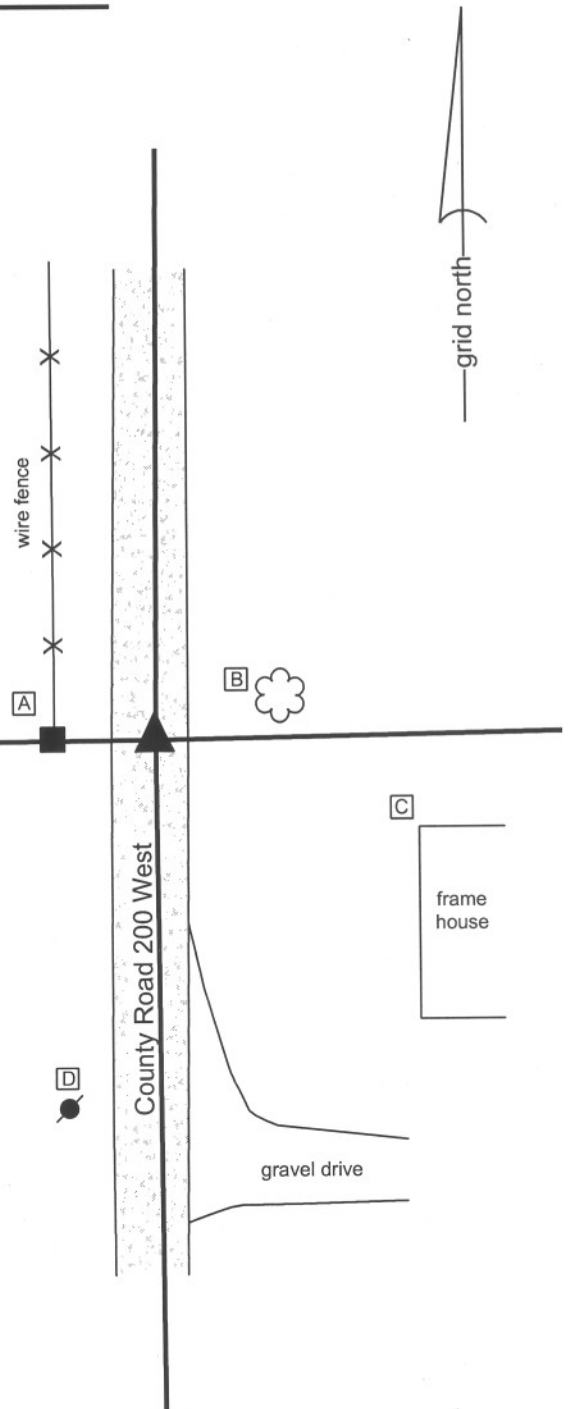
CORNER WITNESS DETAIL

SCALE 1" = 30'



- A - Mag nail set in E. side wood post, 4 inches a.g., 15.6'
- B - West edge, hackberry tree, 17.71'
- C - Northeast corner, frame house, 43.45'
- D - Mag nail set in N. side power pole, 2' a.g., 58.17'

The harrison monument was set in place of a 5/8 inch diameter rebar found. No specific descriptions of this corner were found in the BCS Surveyor's Record. No recent tie cards were found referencing this corner. This corner was excavated on September 6, 2012. Prior to excavation a 5/8 inch diameter rebar was found at 2 inches below grade, in the approximate center of the north-south county road opposite and approximately 1 rod distant from the old wood corner post on the west side of the road. Excavation of an area extending 4 feet north, 6 feet east, 4 feet south and 7 feet west of the rebar yielded no further evidence of the corner. The gravel road bed appears to be only four or five inches thick in this, under which is a sandy, rocky material which appears to be original underlying material and not constructed road sub-base. The rebar fits with local evidence in the form of the road and the fence post and the rebar is known to have been held as the corner by private surveys in this area. The rebar was removed during excavation and replaced with a harrison monument set approximately four inches below the top of the road surface. This corner was originally established as a wood post in 1829.



Kenneth E. Hedge
 Kenneth E. Hedge, County Surveyor

James S. Swift
 James S. Swift, IN LS 20200054
 November 5, 2012

Washington Township

Section 22 T20N, R1W	▲	Section 23 T20N, R1W
-------------------------	---	-------------------------

SECTION CORNER RECORD

NW 900-100

BOONE COUNTY SURVEYOR'S OFFICE

State Plane grid coordinates NAD83 (2011):

North: 1793207.88 East: 3119523.27 (U.S. survey feet)

Type of monument: Harrison, 4" disk 'Section Corner'

Depth: One inch below adjacent ground

Indiana tie card references:

IN02_T20NR1W14_80 IN02_T20NR1W13_72

IN02_T20NR1W23_08 IN02_T20NR1W24_00

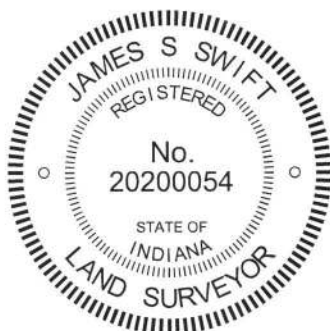
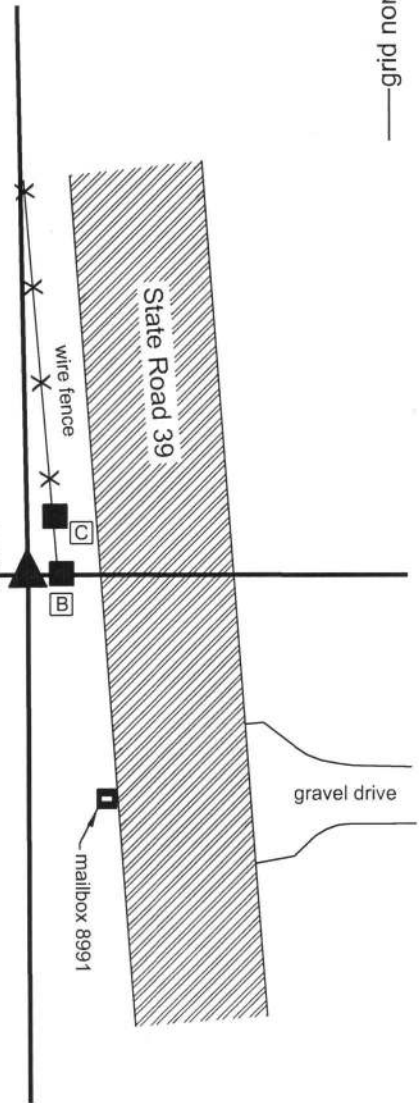


CORNER WITNESS DETAIL

SCALE 1" = 50'

- A - Mag nail set in E. side wood end post, 0.5' a.g., 10.6'
- B - Mag nail set in N.W. side wood post, 0.5' a.g., 6.6'
- C - Mag nail set in S. side wood post, 0.5' a.g., 13.7'

The Harrison Monument was set in place of a 5/8 inch diameter rebar with a red plastic cap stamped "WIT POINT."
No specific descriptions of the corner were found in the old BCS Surveyor's Record. A BCS tie card dated April 23, 1974 calls the corner as a stone found with Chiseled "+".
The found rebar fit precisely with the one remaining tie from the 1974 tie card and also fit graphically with the representation of the corner as being between the right-of-way of State Road 39 and the end post of a fence to the west, in line with the fence. Manual excavation around the rebar and probing in the immediate vicinity of the rebar did not yield further evidence of the corner. Excavation around the rebar clearly demonstrated that the top 8 inches of the soil have been disturbed in recently with various rocks and gravel found mixed with pieces of plastic and rubber. The clay layer was below the soil layer was found at 15 inches. The stone called in the 1974 record was not found. The position of the rebar matches the tie card and the rebar is known to have been held as the corner on numerous private surveys. It is believed that the rebar replaced the stone in the same position.
The rebar was held as marking the corner and was replaced with a Harrison Monument on September 13, 2017.
This corner was originally established as a wood post in 1822.



Kenneth E. Hedge
Kenneth E. Hedge, County Surveyor

James S. Swift
James S. Swift, IN LS 20200054
September 19, 2017

Washington Township

Section 14 T20N, R1W	Section 13 T20N, R1W
Section 23 T20N, R1W	Section 24 T20N, R1W

SECTION CORNER RECORD

NW 900-150

BOONE COUNTY SURVEYOR'S OFFICE

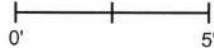
State Plane grid coordinates NAD83 (2011):
North: 1793198.62 East: 3116880.70 (U.S. survey feet)

Type of monument: Harrison, 4" disk 'Section Corner'
Depth: Flush with adjacent ground


Indiana tie card references:
IN02_T20NR1W14_76 IN02_T20NR1W23_04

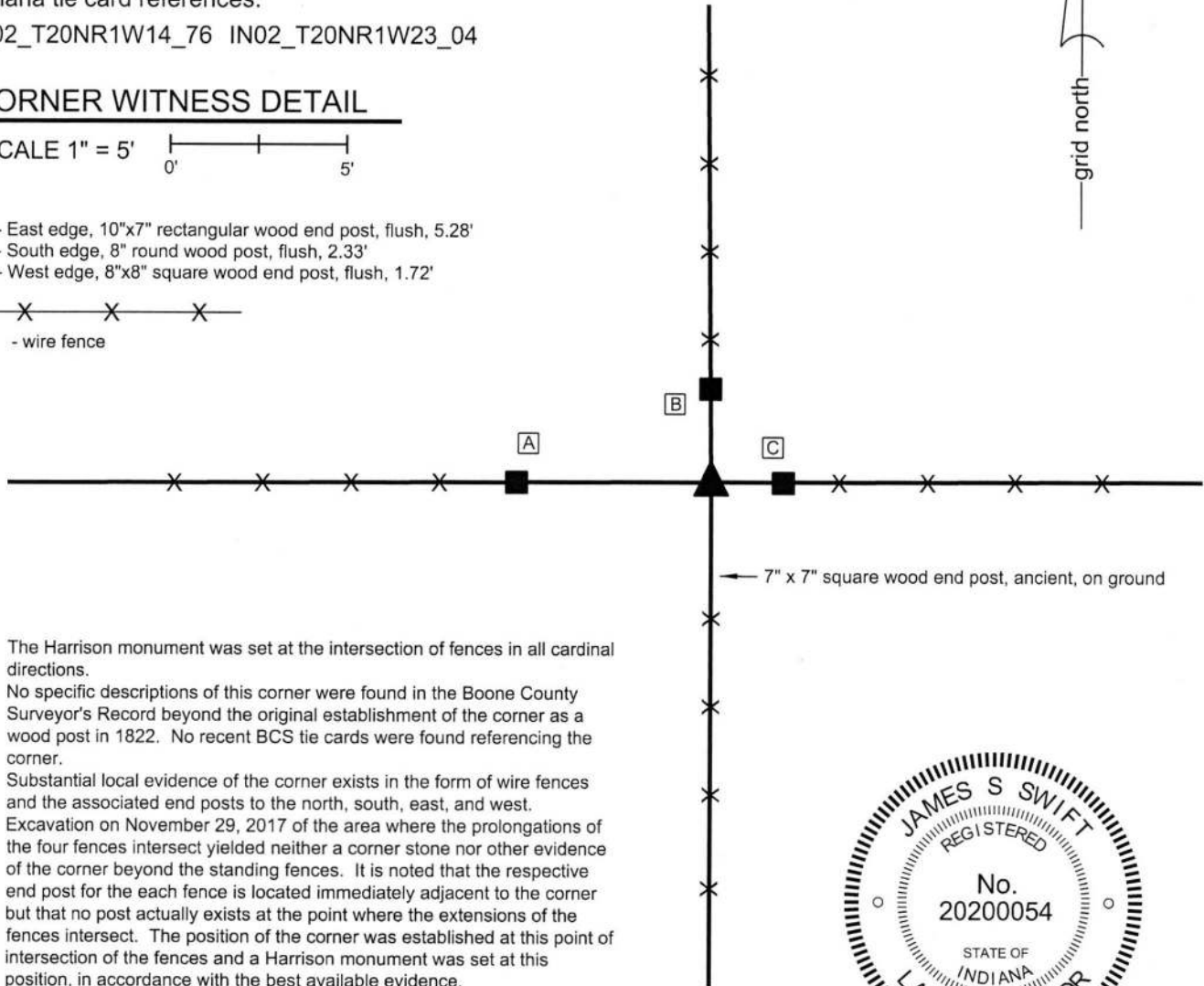
CORNER WITNESS DETAIL

SCALE 1" = 5'



- A - East edge, 10"x7" rectangular wood end post, flush, 5.28'
- B - South edge, 8" round wood post, flush, 2.33'
- C - West edge, 8"x8" square wood end post, flush, 1.72'


- wire fence

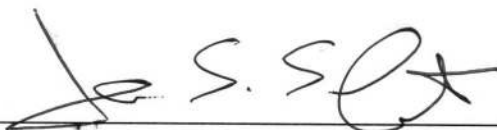


The Harrison monument was set at the intersection of fences in all cardinal directions.

No specific descriptions of this corner were found in the Boone County Surveyor's Record beyond the original establishment of the corner as a wood post in 1822. No recent BCS tie cards were found referencing the corner.

Substantial local evidence of the corner exists in the form of wire fences and the associated end posts to the north, south, east, and west. Excavation on November 29, 2017 of the area where the prolongations of the four fences intersect yielded neither a corner stone nor other evidence of the corner beyond the standing fences. It is noted that the respective end post for the each fence is located immediately adjacent to the corner but that no post actually exists at the point where the extensions of the fences intersect. The position of the corner was established at this point of intersection of the fences and a Harrison monument was set at this position, in accordance with the best available evidence.




James S. Swift, IN LS 20200054
February 14, 2018


Kenneth E. Hedge, County Surveyor

Washington
Township

Section 14
T20N, R1W



Section 23
T20N, R1W

SECTION CORNER RECORD

BOONE COUNTY SURVEYOR'S OFFICE

NW 900-200

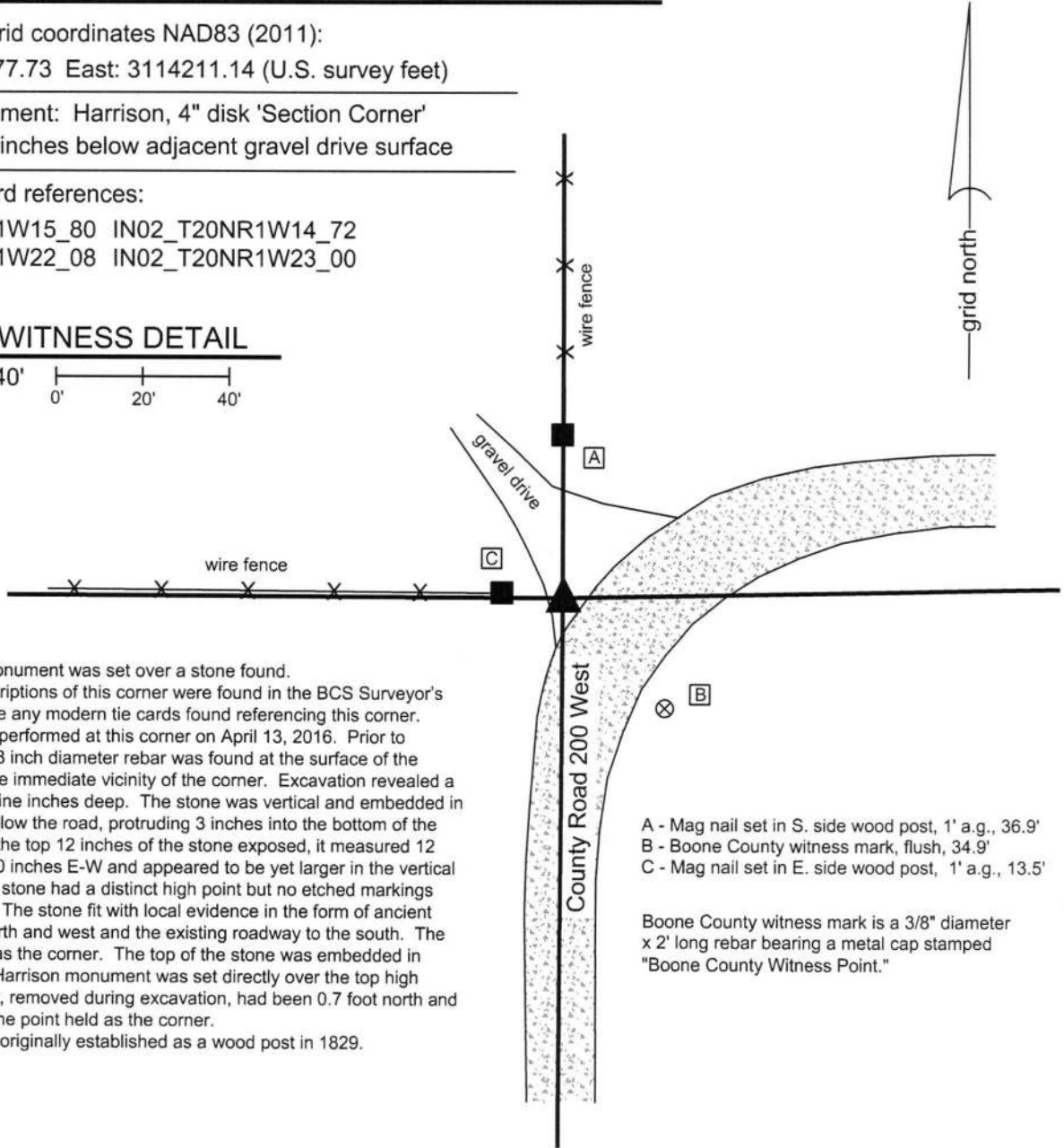
State Plane grid coordinates NAD83 (2011):
 North: 1793177.73 East: 3114211.14 (U.S. survey feet)

Type of monument: Harrison, 4" disk 'Section Corner'
 Depth: Three inches below adjacent gravel drive surface

Indiana tie card references:
 IN02_T20NR1W15_80 IN02_T20NR1W14_72
 IN02_T20NR1W22_08 IN02_T20NR1W23_00

CORNER WITNESS DETAIL

SCALE 1" = 40'



The Harrison monument was set over a stone found.
 No specific descriptions of this corner were found in the BCS Surveyor's Record, nor were any modern tie cards found referencing this corner. Excavation was performed at this corner on April 13, 2016. Prior to excavation, a 5/8 inch diameter rebar was found at the surface of the gravel road in the immediate vicinity of the corner. Excavation revealed a stone found at nine inches deep. The stone was vertical and embedded in the clay layer below the road, protruding 3 inches into the bottom of the road bed. With the top 12 inches of the stone exposed, it measured 12 inches N-S by 10 inches E-W and appeared to be yet larger in the vertical dimension. The stone had a distinct high point but no etched markings were observed. The stone fit with local evidence in the form of ancient fences to the north and west and the existing roadway to the south. The stone was held as the corner. The top of the stone was embedded in concrete and a Harrison monument was set directly over the top high point. The rebar, removed during excavation, had been 0.7 foot north and 1.3 feet east of the point held as the corner.
 This corner was originally established as a wood post in 1829.

- A - Mag nail set in S. side wood post, 1' a.g., 36.9'
- B - Boone County witness mark, flush, 34.9'
- C - Mag nail set in E. side wood post, 1' a.g., 13.5'

Boone County witness mark is a 3/8" diameter x 2' long rebar bearing a metal cap stamped "Boone County Witness Point."



Kenneth E. Hedge
 Kenneth E. Hedge, County Surveyor

James S. Swift
 James S. Swift, IN LS 20200054
 March 23, 2017

Washington Township

Section 15 T20N, R1W	Section 14 T20N, R1W
Section 22 T20N, R1W	Section 23 T20N, R1W