

# SECTION CORNER RECORD

## BOONE COUNTY SURVEYOR'S OFFICE

NE 800-400

State Plane grid coordinates NAD83 (CORS96):

North: 1788100.38 East: 3145357.30 (U.S. survey feet)

Type of monument: Harrison, 4" disk 'Section Corner'

Depth: six inches below adjacent gravel road surface

Indiana tie card references:

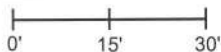
IN02\_T20NR1E22\_80 IN02\_T20NR1E23\_76

IN02\_T20NR1E27\_08 IN02\_T20NR1E26\_00



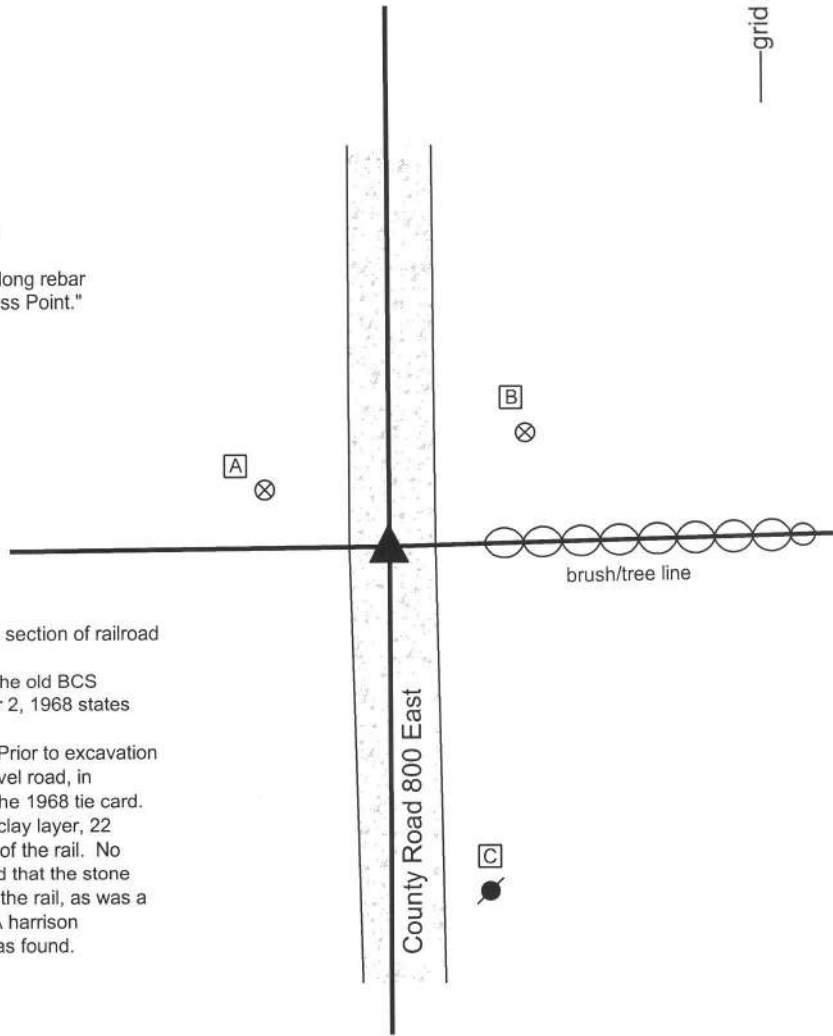
### CORNER WITNESS DETAIL

SCALE 1" = 30'



- A - Boone County witness mark, flush, 21.4'
- B - Boone County witness mark, flush, 27.6'
- C - Mag nail set in N. side power pole, 2' a.g., 55.2'

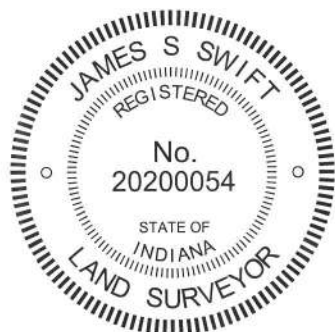
Boone County witness mark is a 3/8" diameter x 2' long rebar bearing a metal cap stamped "Boone County Witness Point."



The harrison monument was set in place of a vertical section of railroad rail found.

No specific descriptions of this corner were found in the old BCS Surveyor's Record. A BCS tie card dated September 2, 1968 states "stone found."

This corner was excavated on November 27, 2013. Prior to excavation a railroad rail was found at 11 inches deep in the gravel road, in agreement with the one remaining distance tie from the 1968 tie card. Excavation revealed a few fragments of wood at the clay layer, 22 inches deep, in the immediate vicinity of the position of the rail. No other evidence of the corner was found. It is believed that the stone was removed when found in 1968 and replaced with the rail, as was a common practice of BCS field crews from that era. A harrison monument was set in the position of the railroad rail as found.



*Kenneth E. Hedge*  
Kenneth E. Hedge, County Surveyor

*James S. Swift*  
James S. Swift, IN LS 20200054  
February 5, 2015

Clinton Township

Section 22 T20N, R1E	Section 23 T20N, R1E
Section 27 T20N, R1E	Section 26 T20N, R1E

# SECTION CORNER RECORD

NE 800-450

## BOONE COUNTY SURVEYOR'S OFFICE

State Plane grid coordinates NAD83 (2011):

CORNER: North: 1788166.61 East: 3147986.09 (U.S. survey feet)

WITNESS: North: 1788166.06 East: 3147986.09 (U.S. survey feet)

Type of monument at corner: Wood corner post

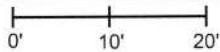
Witness monument: 5/8 inch rebar with metal cap 'Boone County Surveyor'

Indiana tie card references:

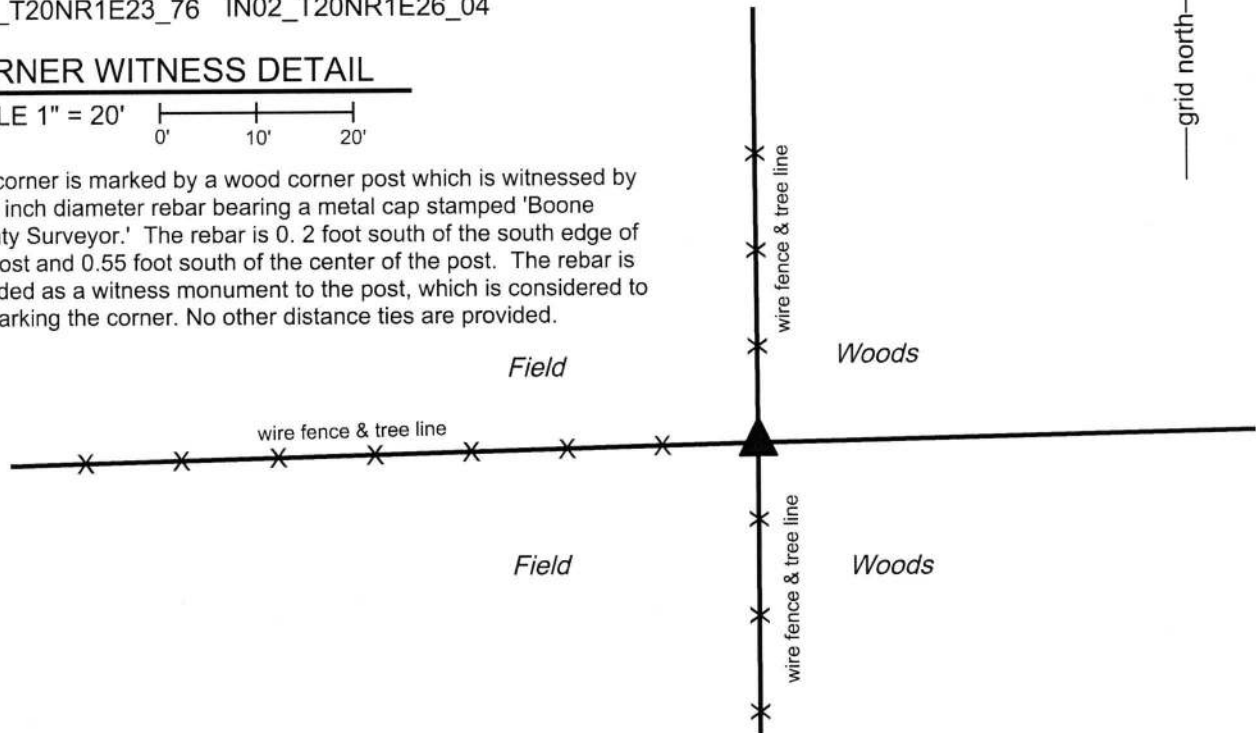
IN02\_T20NR1E23\_76 IN02\_T20NR1E26\_04

### CORNER WITNESS DETAIL

SCALE 1" = 20'



The corner is marked by a wood corner post which is witnessed by a 5/8 inch diameter rebar bearing a metal cap stamped 'Boone County Surveyor.' The rebar is 0.2 foot south of the south edge of the post and 0.55 foot south of the center of the post. The rebar is intended as a witness monument to the post, which is considered to be marking the corner. No other distance ties are provided.

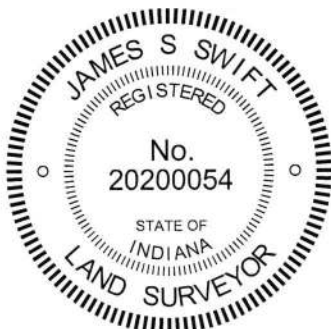


The wood post was found in place. The post is accepted as marking the corner and the rebar is intended as a witness monument to the corner. A BCS record of January 23, 1872 states, with respect to this corner, "Reestablished from both trees. Set rock 13.9.8 +." No recent BCS tie cards were found referencing this corner.

Excavation was performed at this corner on March 12, 2018. Prior to excavation, a wood post was found at the intersection of standing fences to the north, south and west. Excavation and probing around the post revealed two small rocks adjacent to the post, neither of which match the dimensions of the stone called in the 1872 record, nor did they bear the characteristics of stones purposely set to mark the corner. Numerous rocks were found lying on the ground to the northwest of the post. A rock found approximately 5 feet southwest of the post may be the stone called for in the 1872 record. The stone, as is typical, is of irregular shape which makes positive identification of the dimensions difficult. The estimate of the dimensions of the stone are that it is 15x9x11 inches. This is similar to, but not exactly matching the 1872 record. However, the stone does have a clearly visibly etched "+" mark on it. But the stone, as found, was haphazardly placed, partially exposed at the base of a tree. If it is the 1872 record stone, it appears to have been displaced and does not appear to be in its original position. The stone, as found, was not accepted as marking the position of the corner. It is possible that the stone was moved during the installation of the current corner post.

Given the lack of stones found adjacent to the corner post and the presence of a stone which is likely the record stone nearby, but clearly displaced, the post was accepted as providing the best available evidence of the original position of the corner. The center of the post was held as marking the corner. As noted above, the rebar set at the south edge of the post is intended as a witness monument to the post.

This corner was originally established in 1822.



*Kenneth E. Hedge*  
Kenneth E. Hedge, County Surveyor

*James S. Swift*  
James S. Swift, IN LS 20200054  
April 3, 2018

Clinton Township

Section 23  
T20N, R1E

Section 26  
T20N, R1E

# SECTION CORNER RECORD

## BOONE COUNTY SURVEYOR'S OFFICE

NE 800-500

State Plane grid coordinates NAD83 (CORS96):

North: 1788222.91 East: 3150608.23 (U.S. survey feet)

Type of monument: Harrison, 4" disk 'Section Corner'

Depth: six inches below adjacent gravel road surface

Indiana tie card references:

IN02\_T20NR1E23\_80 IN02\_T20NR1E24\_72

IN02\_T20NR1E26\_08 IN02\_T20NR1E25\_00

### CORNER WITNESS DETAIL

SCALE 1" = 30'

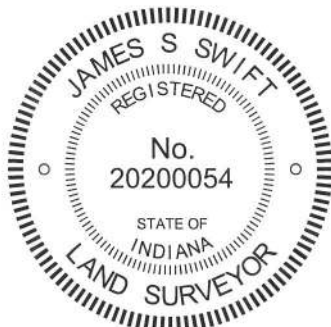
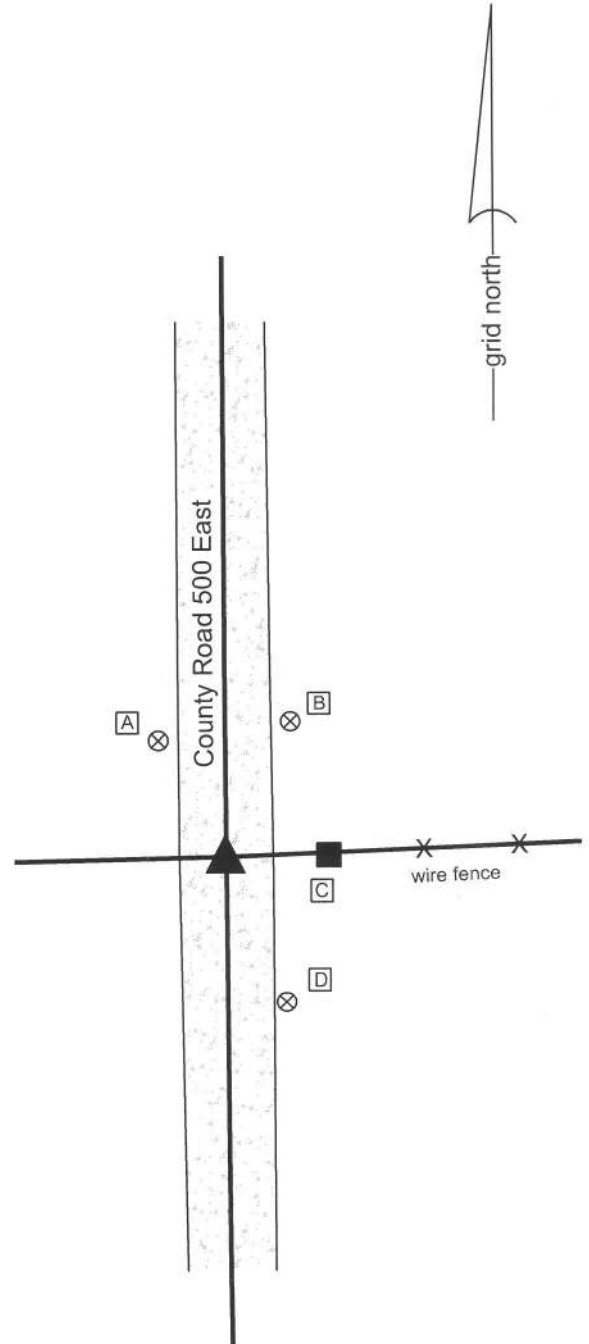
- A - Boone County witness mark, flush, 21.0'
- B - Boone County witness mark, flush, 23.5'
- C - Mag nail set in W. side post 2' a.g., 16.4'
- D - Boone County witness mark, flush, 24.5'

Boone County witness mark is a 3/8" diameter x 2' long rebar bearing a metal cap stamped "Boone County Witness Point."

The harrison monument was set in place of a stone found.

A BCS record of December 13 & 26, 1871 states "Reestablished from stump of S.E. tree and an old rotten stake we found when digging hole for rock which is 16.8.5 + and two small pieces under it." A BCS tie card dated May 30, 1975 states "no stone found - set rod." A BCS tie card dated March 18, 1996 shows the corner as a rebar with no documentation of source.

This corner was excavated on November 18, 2013. A stone was found flush with the surface of the road with a 5/8 inch rebar along the southeast side of the stone. The stone appeared to be leaning slightly to the east. The stone was removed from the road and found to measure 13 inches tall by 8 inches N-S by 5 inches E-W with an etched "+" mark on the west side, 4 inches from the top. Two smaller rocks were found below the stone, set in a manner which indicated that they were intended to support the stone and keep it vertical. These stones appear to each be half of a rock which split down the middle and they look like mirror images of each other. Each of the smaller stones measures 9 inches by 5 inches by 3 inches, more or less. The three stones together closely match the description from the 1871 record, except for the height of the main stone, which is 3 inches shorter than the record. The stone did appear to have been broken off at the top, which is logical given the fact that the top of the rock was flush with the road surface as originally found, and which would explain the variation from the 1871 description. All monuments were removed from the road and a harrison monument was set in place of the stone as it would have been positioned if vertical. The rebar had been on the northwest side of the stone, 0.3' west and 0.3' north of the position held as the corner. This corner was originally established as a wood post in 1822.



*Kenneth E. Hedge*  
 Kenneth E. Hedge, County Surveyor

*James S. Swift*  
 James S. Swift, IN LS 20200054  
 February 5, 2015

Clinton Township

Section 23 T20N, R1E	Section 24 T20N, R1E
Section 26 T20N, R1E	Section 25 T20N, R1E

The diagram shows a 2x2 grid of sections. A triangle (the Harrison monument) is located at the intersection of Section 24 (top right) and Section 25 (bottom right).



PHOTOGRAPHIC DOCUMENTATION  
Date of photography: November 18, 2013

View of the stone from above and west.



The stone, removed from the road, showing the etched mark that was on the east side of the stone.



The stone, removed from the road, along with the two small rocks found below.

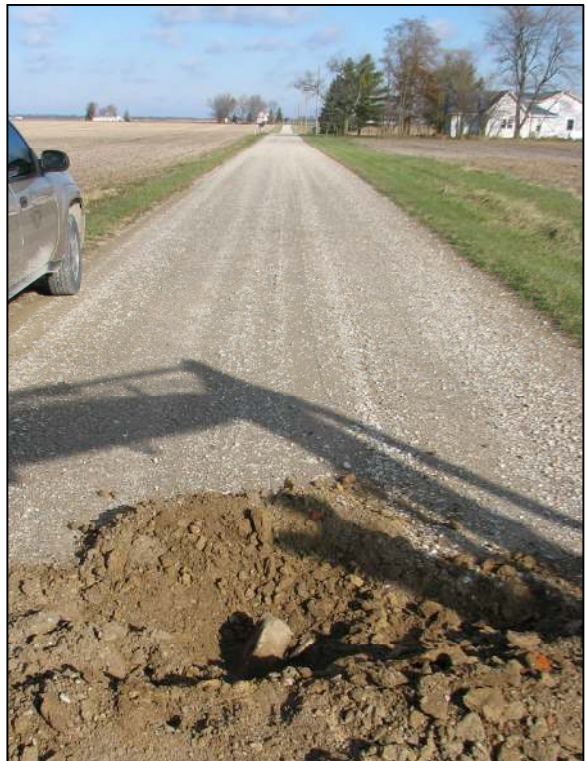


For details and documentation, refer to related sheet "Section Corner Record."

View from the west, looking across the stone and along the adjacent fence line to the east.



View from the south, looking across the stone and north along County Road 500 East.



# SECTION CORNER RECORD

NE 850-400

## BOONE COUNTY SURVEYOR'S OFFICE

State Plane grid coordinates NAD83 (CORS96):

North: 1790732.61 East: 3145345.955 (U.S. survey feet)

Type of monument: Harrison, 4" disk 'Section Corner'

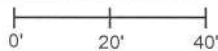
Depth: One inch below adjacent road surface

Indiana tie card references:

IN02\_T20NR1E22\_44 IN02\_T20NR1E23\_36

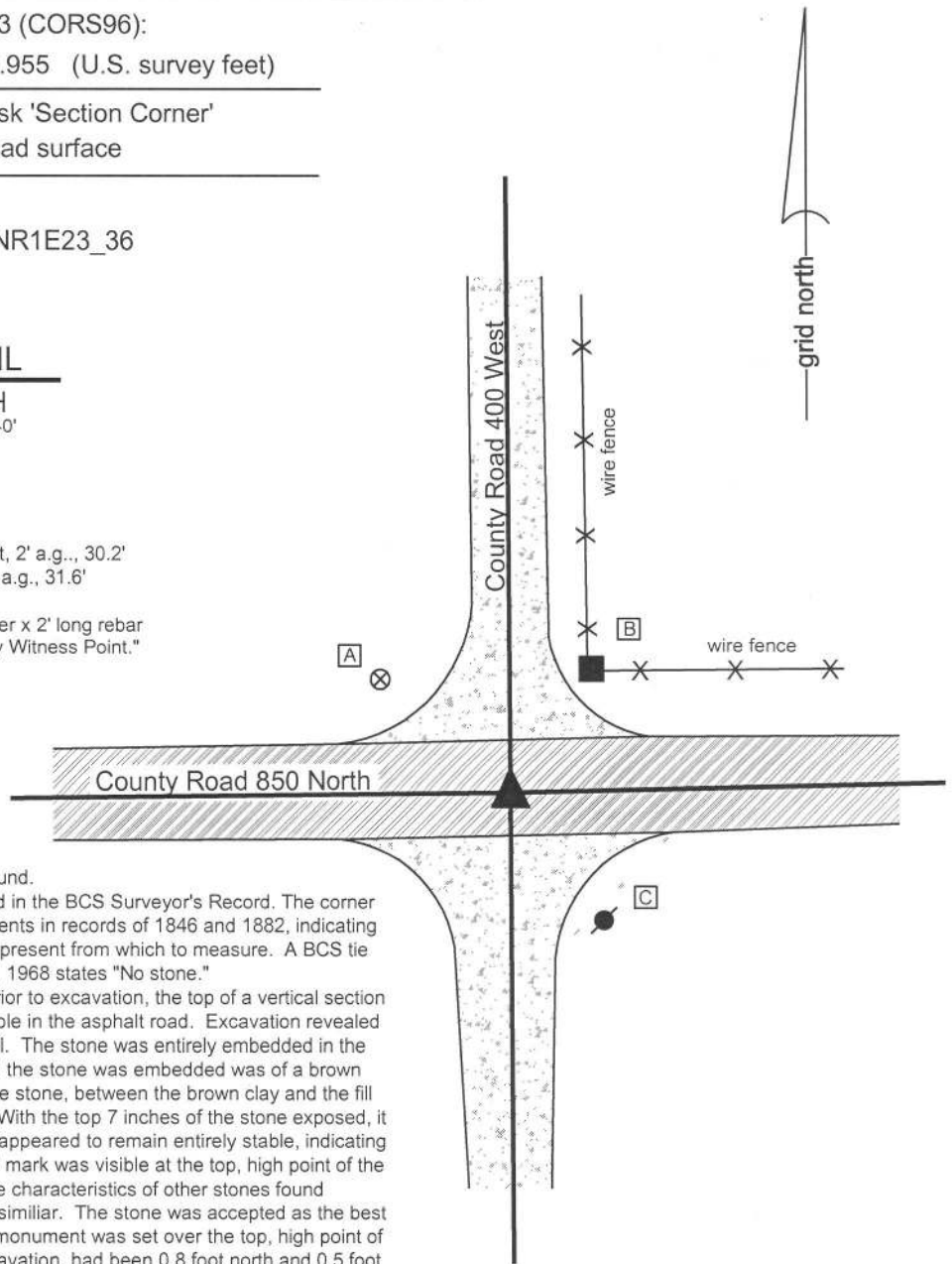
### CORNER WITNESS DETAIL

SCALE 1" = 40'



- A - Boone County witness mark, flush, 36.3'
- B - Mag Nail set in W. side, wood corner post, 2' a.g., 30.2'
- C - Mag nail set in N.E. side power pole, 18" a.g., 31.6'

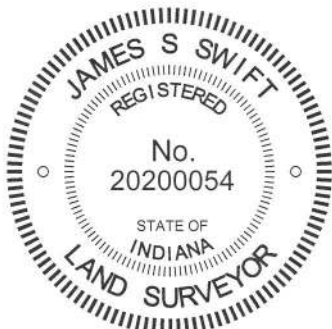
Boone County witness mark is a 3/8" diameter x 2' long rebar bearing a metal cap stamped "Boone County Witness Point."



The Harrison monument was set over a stone found.

No specific descriptions of this corner were found in the BCS Surveyor's Record. The corner is mentioned as the terminal point for measurements in records of 1846 and 1882, indicating that, at that time, some physical monument was present from which to measure. A BCS tie card referencing this corner, dated September 3, 1968 states "No stone."

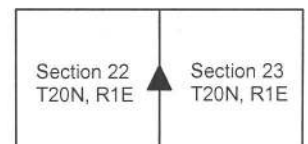
This corner was excavated on May 28, 2014. Prior to excavation, the top of a vertical section of railroad rail was found at 5 inches deep in a hole in the asphalt road. Excavation revealed a stone found at 30 inches deep, south of the rail. The stone was entirely embedded in the clay layer below the road bed. The clay in which the stone was embedded was of a brown color and a thin layer of gray clay was above the stone, between the brown clay and the fill material making up the bottom of the road bed. With the top 7 inches of the stone exposed, it measured 12 inches E-W by 10 inches N-S and appeared to remain entirely stable, indicating that it was yet much larger. A vague, shallow "+" mark was visible at the top, high point of the stone. The characteristics of the stone fit with the characteristics of other stones found throughout the county for which the records are similar. The stone was accepted as the best available evidence of the corner and a Harrison monument was set over the top, high point of the stone. The railroad rail, removed during excavation, had been 0.8 foot north and 0.5 foot east of the top, high point of the stone. It is most likely that the rail was set in association with the 1968 tie card. Clearly the statement "no stone" on that tie card was erroneous. This corner was originally established as a wood post in 1822.



*Kenneth E. Hedge*  
 Kenneth E. Hedge, County Surveyor

*James S. Swift*  
 James S. Swift, IN LS 20200054  
 March 27, 2015

Clinton Township





# SECTION CORNER RECORD

NE 850-500

## BOONE COUNTY SURVEYOR'S OFFICE

State Plane grid coordinates NAD83 (CORS96):

North: 1790861.36 East: 3150594.12 (U.S. survey feet)

Type of monument: Harrison, 4" disk 'Section Corner'

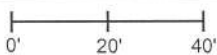
Depth: One inch below adjacent road surface

Indiana tie card references:

IN02\_T20NR1E23\_44 IN02\_T20NR1E24\_36

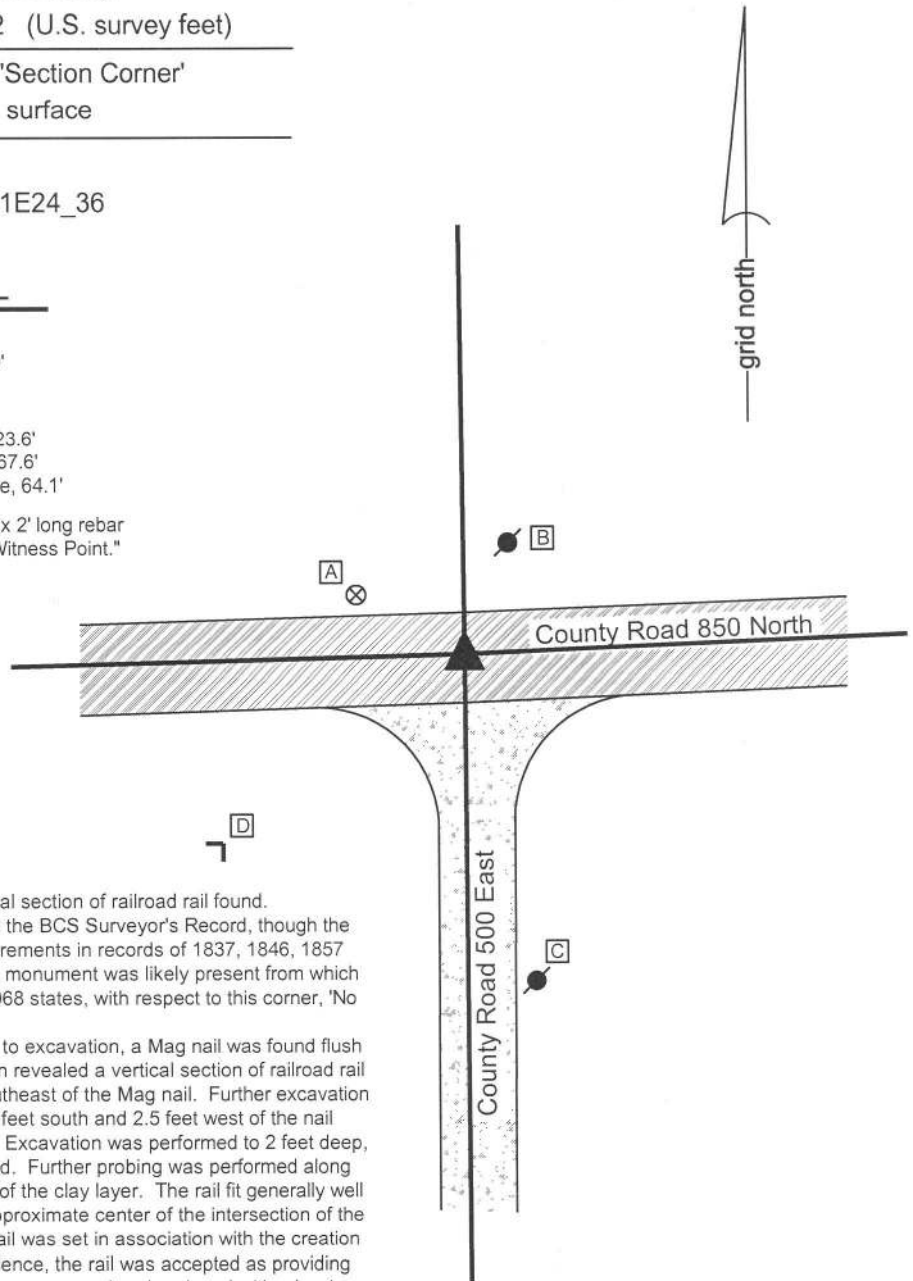
### CORNER WITNESS DETAIL

SCALE 1" = 40'



- A - Boone County witness mark, flush, 26.0'
- B - Mag nail set in S. side power pole, 2' a.g., 23.6'
- C - Mag nail set in N. side power pole, 2' a.g., 67.6'
- D - N.E. corner, brick chimney on N. side house, 64.1'

Boone County witness mark is a 3/8" diameter x 2' long rebar bearing a metal cap stamped "Boone County Witness Point."

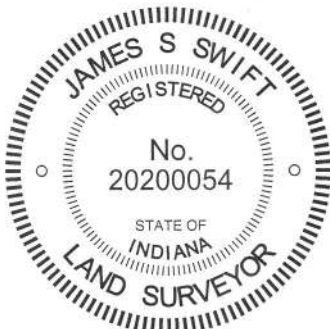


The Harrison monument was set in place of a vertical section of railroad rail found.

No specific descriptions of this corner were found in the BCS Surveyor's Record, though the corner is mentioned as the terminal point for measurements in records of 1837, 1846, 1857 and 1882, indicating that at that time some physical monument was likely present from which to measure. A BCS tie card dated September 3, 1968 states, with respect to this corner, 'No stone found.'

This corner was excavated on May 29, 2014. Prior to excavation, a Mag nail was found flush with the surface of the asphalt roadway. Excavation revealed a vertical section of railroad rail found at 7 inches deep, approximately 3 inches southeast of the Mag nail. Further excavation of an area extending 2 feet north, 2.5 feet east, 5.5 feet south and 2.5 feet west of the nail and rail revealed no further evidence of the corner. Excavation was performed to 2 feet deep, several inches into the clay layer below the road bed. Further probing was performed along the south edge of the excavation area at the depth of the clay layer. The rail fit generally well with the local evidence of the corner being in the approximate center of the intersection of the two roads. It is believed to be most likely that the rail was set in association with the creation of the 1968 tie card. Having found no contrary evidence, the rail was accepted as providing the best available evidence of the corner. The rail was removed and replaced with a Harrison monument set in the same position.

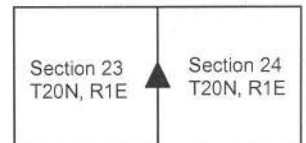
This corner was originally established as a wood post in 1822.



  
Kenneth E. Hedge, County Surveyor

  
James S. Swift, IN LS 20200054  
March 27, 2015

Clinton Township



# SECTION CORNER RECORD

NE 900-400

## BOONE COUNTY SURVEYOR'S OFFICE

State Plane grid coordinates NAD83 (CORS96):

North: 1793370.06 East: 3145330.98 (U.S. survey feet)

Type of monument: Harrison, 4" disk 'Section Corner'

Depth: six inches below adjacent gravel road surface

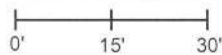
Indiana tie card references:

IN02\_T20NR1E15\_80 IN02\_T20NR1E14\_72

IN02\_T20NR1E22\_08 IN02\_T20NR1E23\_00

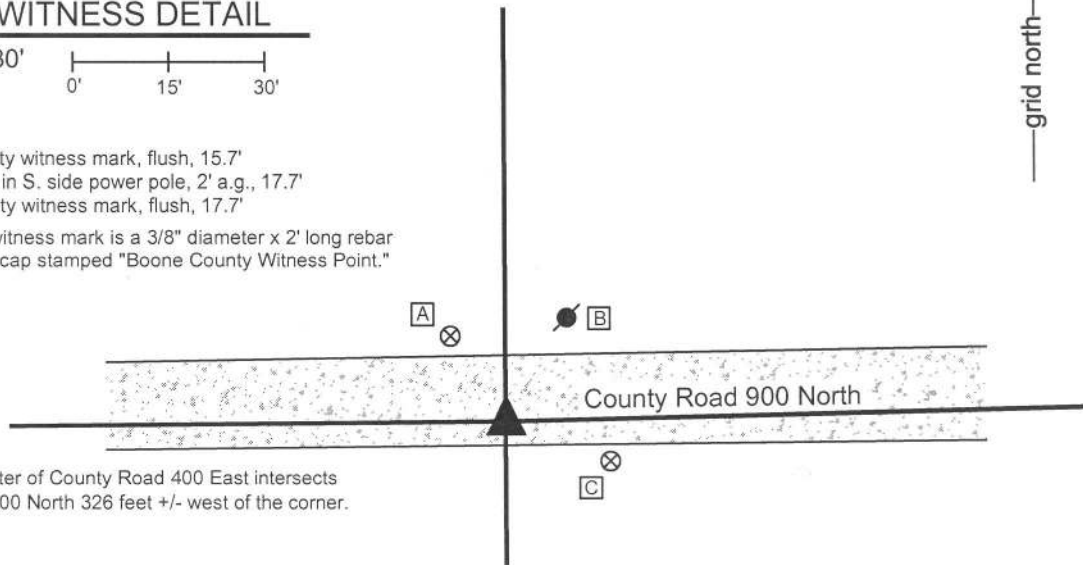
### CORNER WITNESS DETAIL

SCALE 1" = 30'



- A - Boone County witness mark, flush, 15.7'
- B - Mag nail set in S. side power pole, 2' a.g., 17.7'
- C - Boone County witness mark, flush, 17.7'

Boone County witness mark is a 3/8" diameter x 2' long rebar bearing a metal cap stamped "Boone County Witness Point."

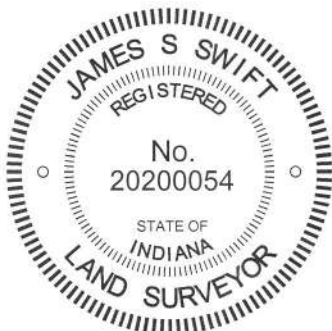


Note: The center of County Road 400 East intersects County Road 900 North 326 feet +/- west of the corner.

The Harrison monument was set in place of a stone found.

A BCS record of December 15, 1882 states, with respect to this corner, "Reestablished - Rock 18x11x8" A BCS tie card dated June 3, 1975 states "No Stone Found - Set Rod."

This corner was excavated on June 11, 2014. Prior to excavation, a 5/8 inch diameter rebar with a red plastic cap stamped "witness point" was found at 1 inch below the surface of the gravel road. The source of this monument is not known and it is not believed to be the same monument referred to as a 'rod' on the 1975 tie card. No reference points remain from the 1975 witness ties. Excavation revealed the stone described in the 1882 record at 8 inches deep, south and west of the rebar. As found, the stone appeared to be leaned to the west. Based on observations of the orientation of stones found at other corners throughout the county, it is expected that a stone set by the County Surveyor in 1882 would have been set vertically. This stone appeared to have been displaced from its vertical orientation, presumably by road grading equipment and partially leaned to the west. A distinct etched "+" mark was visible towards the west side of the stone as found. The stone was stood up in a vertical orientation, leaving the base of the stone in the same position as originally found, embedded in the clay layer below the road. With the stone stood up, the etched "+" mark was on the top of the rock and the rock measured 18 inches tall by 11 inches N-W by 8 inches E-W. As stood vertically, the top of the stone was approximately 4 inches deep and it appears that the stone would have protruded 3 to 4 inches out of the clay into the base of the road bed, with the bottom 14 to 15 inches of the stone embedded in the clay. The stone was situated towards the south edge of the road. This position fit very well with visual observations of the center of the road to the east and west. It is noted that the 1975 tie card shows the set 'rod' as being at 15.5 feet south of the post on the north side of the road. If the rebar found prior to excavation was in the same place as the rod called for in 1975, then the stone, being 1 foot south of the rebar, would have been situated at approximately 16.5 feet (1 rod) south of the post. It has been observed at other corners that the found stone or other ancient monument is often situated at 1 rod from an adjacent corner post. Both the rebar and the stone were removed and a Harrison monument was set in the position of the etched "+" on the top of the rock, as stood in a vertical orientation. The rebar had been approximately 1 foot north and 0.4 foot east of this point. This corner was originally established as a wood post in 1822.



*Kenneth E. Hedge*  
 Kenneth E. Hedge, County Surveyor

*James S. Swift*  
 James S. Swift, IN LS 20200054  
 March 27, 2015

Clinton Township

Section 15 T20N, R1E	Section 14 T20N, R1E
Section 22 T20N, R1E	Section 23 T20N, R1E



PHOTOGRAPHIC DOCUMENTATION

Date of photography: June 11, 2014

The stone as originally found, leaned substantially toward the west.



View from the northeast showing the stone stood vertically in the position believed most likely prior to it being leaned toward the west.



View from above and north, showing the stone vertical and washed. Note the etched + on top.



View from the west, looking across the stone and east along County Road 900 North.



View from the south, showing the stone vertical and washed.



For details and documentation, refer to related sheet "Section Corner Record."



# SECTION CORNER RECORD

NE 900-450

## BOONE COUNTY SURVEYOR'S OFFICE

State Plane grid coordinates NAD83 (CORS96):

North: 1793435.42 East: 3147940.39 (U.S. survey feet)

Type of monument: Harrison, 4" disk 'Section Corner'

Depth: six inches below adjacent gravel road surface

Indiana tie card references:

IN02\_T20NR1E14\_76

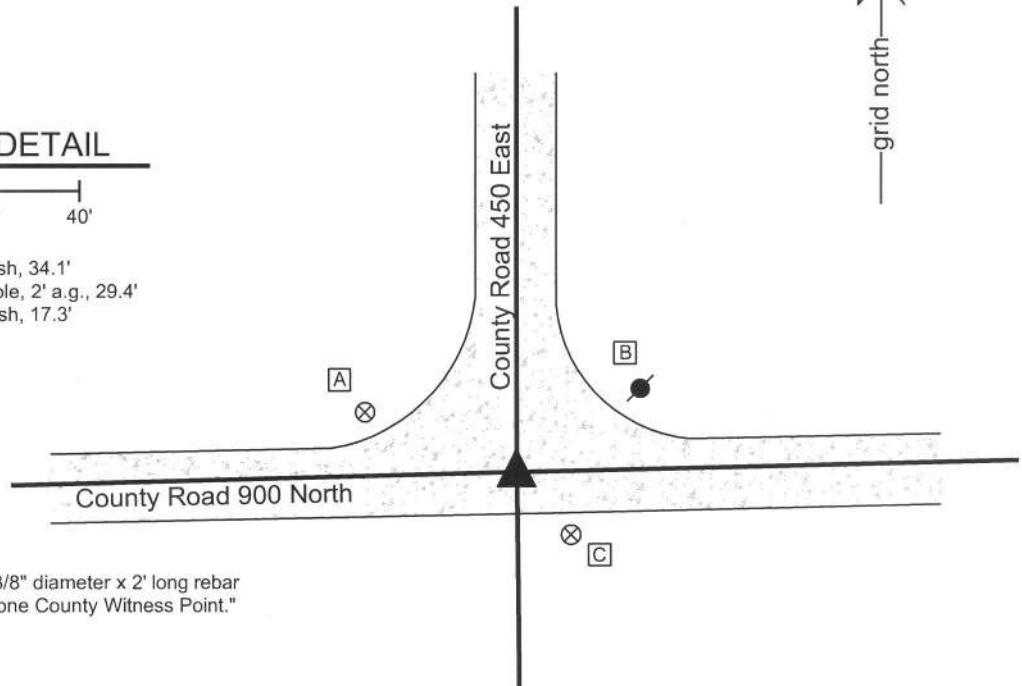
IN02\_T20NR1E23\_04



### CORNER WITNESS DETAIL

SCALE 1" = 40'

- A - Boone County witness mark, flush, 34.1'
- B - Mag nail set in W. side power pole, 2' a.g., 29.4'
- C - Boone County witness mark, flush, 17.3'

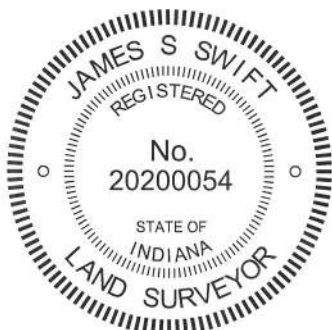


Boone County witness mark is a 3/8" diameter x 2' long rebar bearing a metal cap stamped "Boone County Witness Point."

The Harrison monument was set over a stone.

No specific descriptions of this corner were found in the old BCS Surveyor's Record, though it is mentioned as the terminal point for measurements in records of 1846, 1862, 1866 and 1882, indicating that some object was present at the time of those records. A BCS tie card dated June 3, 1975 states "Stone found 8" deep. Set rod at angle over stone."

This corner was excavated on November 19, 2013. Prior to excavation a 5/8 inch diameter rebar was found at 1 inch below grade at the intersection of the two gravel roads. Excavation revealed a stone found at 5 inches deep, slightly north and west of the rebar. The stone was small and situated in fill material. The rebar appeared to be reasonable new, was not at an "angle over the stone," and is not considered to represent to monument mention on the 1975 tie card. No distance ties remain from the 1975 card. Further excavation revealed a larger stone, embedded in the clay material below the road bed. This stone was south of the smaller stone and the rebar and more in line with the center of the East-West county road. The stone was slightly disturbed during excavation, but appeared to be of a shape which is half of a sphere, with the rounded part down and the flat part up. The top of the stone was at the top of the clay layer below the road. The top of the stone was 14 inches diameter E-W by 12 inches diameter N-S. This stone fit better with the local evidence, being in the center of the E-W road and fit better with the characteristics of a true corner stone, being embedded in the clay layer below the road. This stone was accepted as marking the corner. The stone was left in place and a Harrison monument was set over the top, center of the stone. The rebar, removed during excavation, had been 1 .9' North and 0.5' East of the stone.



Kenneth E. Hedge, County Surveyor

James S. Swift, IN LS 20200054  
February 5, 2015

Clinton Township

Section 14  
T20N, R1E

Section 23  
T20N, R1E

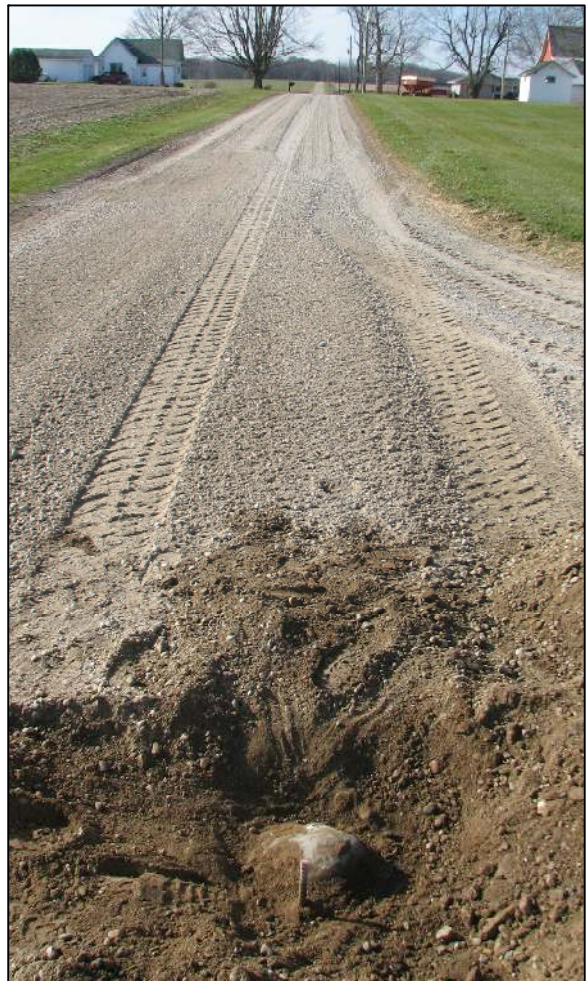
PHOTOGRAPHIC DOCUMENTATION

Date of photography: November 19, 2013

View of the upper stone as first exposed and the adjacent rebar.



View from the east, looking across the upper stone and west along County Road 900 North.



The lower stone.



The lower stone immediately before it is encased in concrete and a harrison monument set over it.



For details and documentation, refer to related sheet "Section Corner Record."