

SECTION CORNER RECORD

NE-200-1000

BOONE COUNTY SURVEYOR'S OFFICE

State Plane grid coordinates NAD83 (NSRS 2007):

North: 1757236.74 East: 3177675.57 (U.S. survey feet)

Type of monument: Harrison, 4" disk 'Section Corner'

Depth: One inch below adjacent road surface

Indiana tie card references:

IN02_T19NR2E22_80

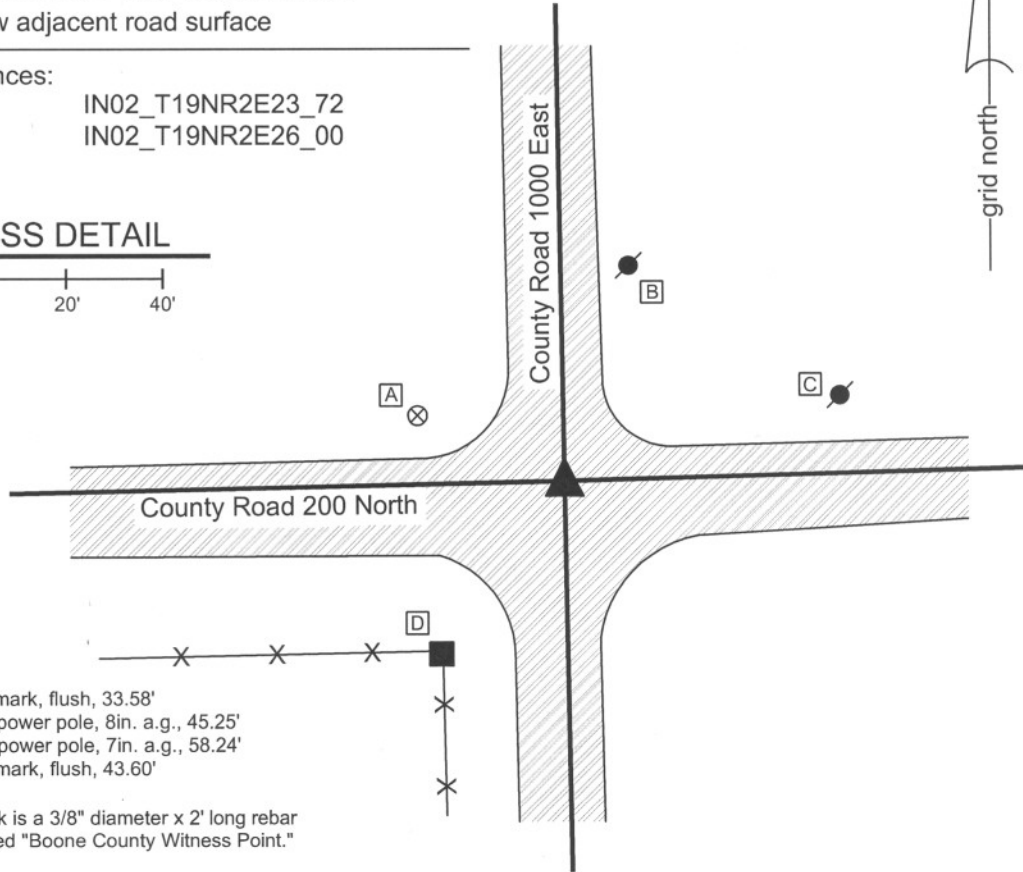
IN02_T19NR2E23_72

IN02_T19NR2E27_08

IN02_T19NR2E26_00

CORNER WITNESS DETAIL

SCALE 1" = 40'



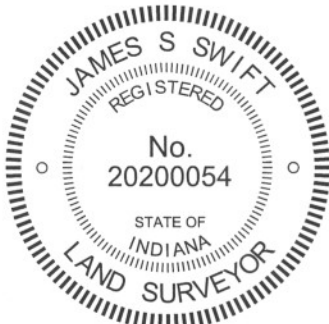
- A - Boone County witness mark, flush, 33.58'
- B - Nail found in S.W. side power pole, 8in. a.g., 45.25'
- C - Nail found in S.W. side power pole, 7in. a.g., 58.24'
- D - Boone County witness mark, flush, 43.60'

Boone County witness mark is a 3/8" diameter x 2' long rebar bearing a metal cap stamped "Boone County Witness Point."

The harrison monument was set in place of a rebar found.

A BCS tie card dated July 11, 1974 states "found stone 16" deep w/ PK nail." No specific descriptions of this corner were found in the old BCS Surveyor's Record.

This corner was excavated on July 8, 2010. Prior to excavation, a mag nail was visible at the surface. Excavation revealed four additional monuments in three separate positions. A 5/8 inch rebar and iron pipe were found approximately below the mag nail. Another 5/8 inch rebar was found to the north and west. A 1/2 inch rebar was also found northeast of the mag nail. No stone was found and the preponderance of evidence indicates that the 1/2 inch rebar represents the position of the stone found in 1974. It has been observed at other corners that the term "stone found" on a tie card from the summer of 1974 generally indicates that a stone was found, removed and replaced with a metal monument, being either a railroad rail on end or a 1/2 inch rebar. The presence of the rebar is consistent with this observation. The 1/2 inch rebar fits with the distance ties shown on the 1974 tie card, whereas none of the other monuments fit with those distance ties. Furthermore, excavation revealed that the top 14 inches of the road bed are either asphalt (top two inches) or recent fill material (2 - 14 inches deep.) The two 5/8 inch rebars and the pipe were all well within the recent fill material, but the 1/2 inch rebar was at 14 inches, with the top of the being at the top of the older fill material. The 1/2 inch rebar was accepted as the best available evidence of the position of the stone found in 1974 and was held as marking the corner. A harrison monument was set in its place. The mag nail, pipe and one rebar (all removed during excavation) had been 1.7 feet south and 0.6 foot west of the corner. The other 5/8 inch rebar had been 0.6 foot south and 1.9 feet west of the corner. This corner was originally established as a wood post in July, 1821.



Kenneth E. Hedge
 Kenneth E. Hedge, County Surveyor

James S. Swift
 James S. Swift, IN LS 20200054
 July 25, 2011

Marion Twp

Section 22 T19N, R2E	Section 23 T19N, R2E
-------------------------	-------------------------

Union Twp

Section 27 T19N, R2E	Section 26 T19N, R2E
-------------------------	-------------------------

SECTION CORNER RECORD

NE 200-1050

BOONE COUNTY SURVEYOR'S OFFICE

State Plane grid coordinates NAD83 (CORS96):

North: 1757305.70 East: 3180331.14 (U.S. survey feet)

Type of monument: Harrison, 4" disk 'Section Corner'

Depth: four inches above adjacent grade

Indiana tie card references:

IN02_T19NR2E23_76

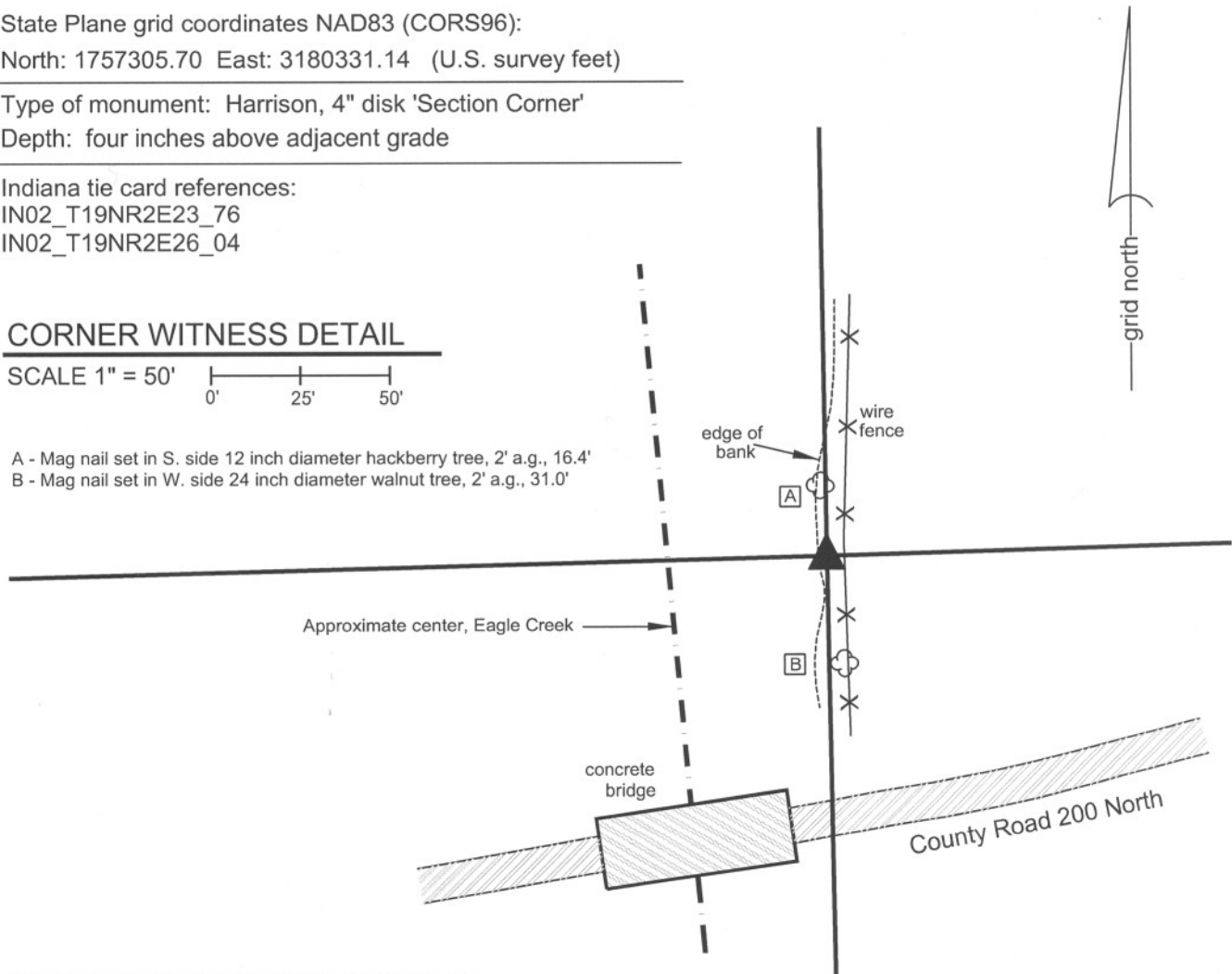
IN02_T19NR2E26_04

CORNER WITNESS DETAIL

SCALE 1" = 50'



- A - Mag nail set in S. side 12 inch diameter hackberry tree, 2' a.g., 16.4'
- B - Mag nail set in W. side 24 inch diameter walnut tree, 2' a.g., 31.0'

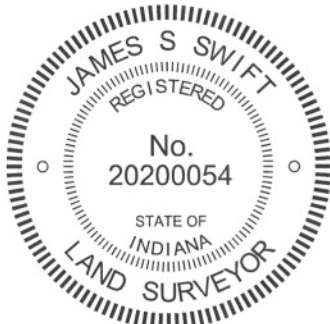


The harrison monument was set in place of a rebar found.

A BCS recrod dated May 8, 1861 states "Reestablished from old trees both here. Set a Rock 10,6 by 5 inches." No recent BCS tie cards were found referencing this corner.

This corner was investigated before and during September, 2011. The corner falls near the bank of Eagle Creek and the location of the typical forms of evidence such as roads and fences are directly influenced by the presence of the creek. A 5/8 inch diameter rebar with a plastic cap stamped "Dodge" was found near the midpoint of the line connecting the section corners to the east and west. The rebar falls 2.6 feet south and 2.2 feet west of the midpoint. The rebar was well north of county road 200 north, but is in line with the extended center of the road to the east. The rebar was slightly west of the north-south fence near the corner. The fence is not straight and generally follows the creek bank. The landowner to the east noted that the fence was built to hold livestock and its position was determined by the location of the creek bank and that it was never intended to follow mark the property or section line. Extensive probing was performed in the immediate vicinity of the stone and calculated midpoint in search of the stone mentioned in the 1861 record or other physical evidence of the corner. Significant excavation was not performed, as the corner is immediately adjacent to the bank of Eagle Creek and excavation was not deemed prudent in this location. No further evidence of the corner was found and the rebar was held as marking the corner. The rebar was removed and a harrison monument was set in concrete within a vertical section of 12" HDPE corrugated smooth wall pipe. The harrison monument was set on September 6, 2011.

This corner was originally established as a wood post in July, 1821.



Kenneth E. Hedge
Kenneth E. Hedge, County Surveyor

James S. Swift
James S. Swift, IN LS 20200054
March 1, 2012

Marion Twp

Section 23
T19N, R2E

Union Twp

Section 26
T19N, R2E

SECTION CORNER RECORD

NE 200-1100

BOONE COUNTY SURVEYOR'S OFFICE

State Plane grid coordinates NAD83 (NSRS 2007):
North: 1757380.00 East: 3182991.00 (U.S. survey feet)

Type of monument: Harrison, 4" disk 'Section Corner'
Depth: One inch below adjacent road surface

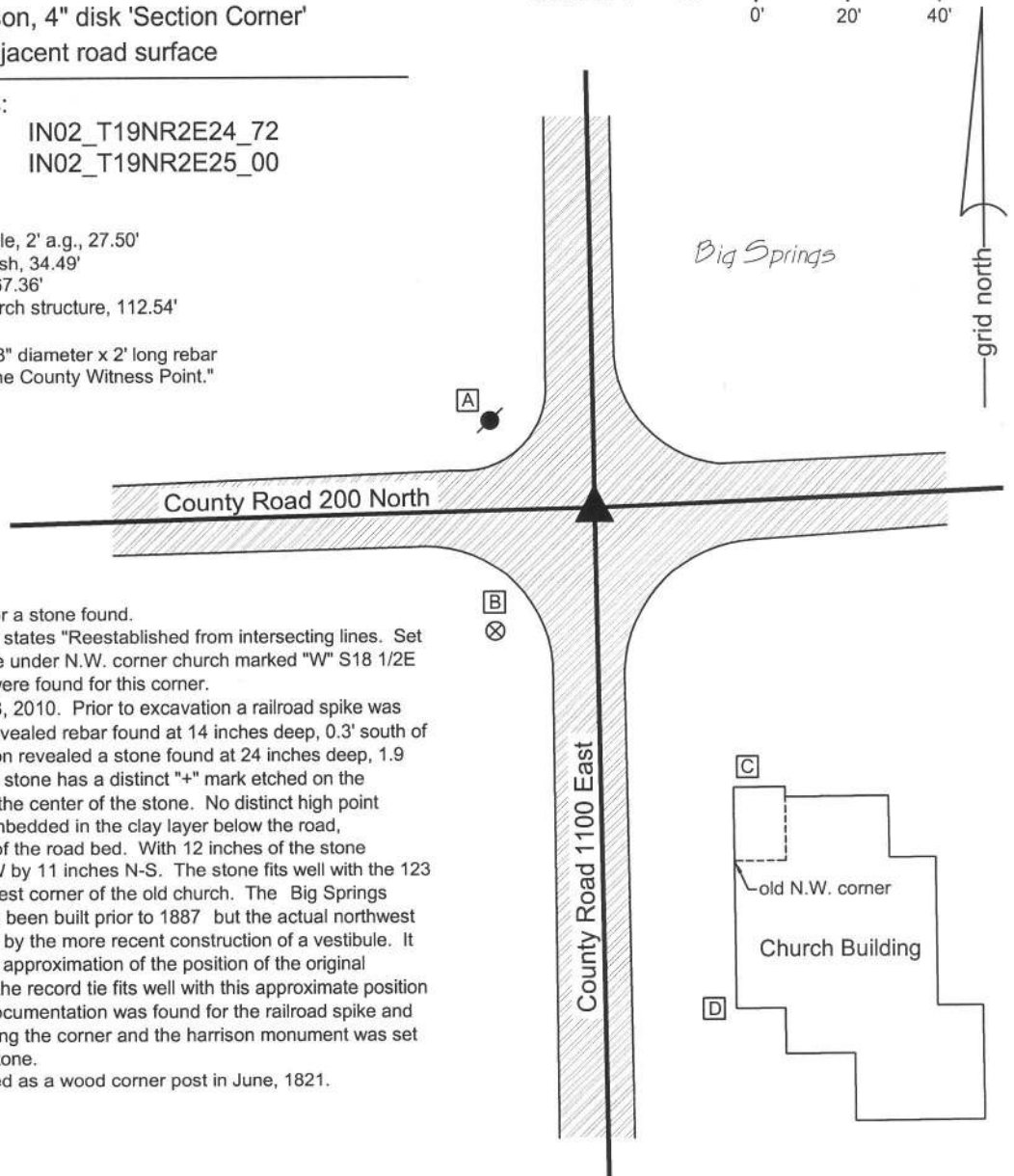
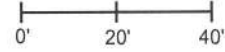
Indiana tie card references:
IN02_T19NR2E23_80 IN02_T19NR2E24_72
IN02_T19NR2E24_08 IN02_T19NR2E25_00

- A - Mag nail set in S. side power pole, 2' a.g., 27.50'
- B - Boone County witness mark, flush, 34.49'
- C - N.W. corner, church vestibule, 67.36'
- D - Southwesterly corner, main church structure, 112.54'

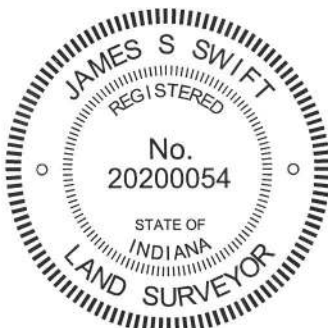
Boone County witness mark is a 3/8" diameter x 2' long rebar bearing a metal cap stamped "Boone County Witness Point."

CORNER WITNESS DETAIL

SCALE 1" = 40'



The harrison monument was set over a stone found.
A BCS record of September 5, 1887 states "Reestablished from intersecting lines. Set a rock 27,11,15 +. Foundation stone under N.W. corner church marked "W" S18 1/2E 123 1/2." No recent BCS tie cards were found for this corner.
This corner was excavated on July 8, 2010. Prior to excavation a railroad spike was visible at the surface. Excavation revealed rebar found at 14 inches deep, 0.3' south of the railroad spike. Further excavation revealed a stone found at 24 inches deep, 1.9 feet south of the railroad spike. The stone has a distinct "+" mark etched on the sloping south side at approximately the center of the stone. No distinct high point exists on the stone. The stone is embedded in the clay layer below the road, protruding 2 inches into the bottom of the road bed. With 12 inches of the stone exposed, it measures 11 inches E-W by 11 inches N-S. The stone fits well with the 123 1/2 link (81.51 feet) tie to the northwest corner of the old church. The Big Springs Community Church appears to have been built prior to 1887 but the actual northwest corner of the old church is obscured by the more recent construction of a vestibule. It is possible to estimate a reasonable approximation of the position of the original northwest corner of the church and the record tie fits well with this approximate position of the building corner. No source documentation was found for the railroad spike and rebar. The stone was held as marking the corner and the harrison monument was set directly over the etched "+" on the stone.
This corner was originally established as a wood corner post in June, 1821.



Kenneth E. Hedge
Kenneth E. Hedge, County Surveyor

James S. Swift
James S. Swift, IN LS 20200054
July 25, 2011, Revised March 18, 2013

Marion Twp	Section 23 T19N, R2E	Section 24 T19N, R2E
Union Twp	Section 26 T19N, R2E	Section 25 T19N, R2E

PHOTOGRAPHIC DOCUMENTATION

Date of photography: July 8, 2010

View of the stone from the south.



View of the stone from the south, showing mark.



View from above the stone looking east along County Road 200 North.



View of the stone from the north.



Big Springs Community Church, from above the stone at the time of excavation.



For details and documentation, refer to related sheet "Section Corner Record."

SECTION CORNER RECORD

BOONE COUNTY SURVEYOR'S OFFICE

NE 250-1000

State Plane grid coordinates NAD83 (CORS96):

North: 1759876.56 East: 3177631.40 (U.S. survey feet)

Type of monument: Harrison, 4" disk 'Section Corner'

Depth: flush with adjacent road surface

Indiana tie card references:

IN02_T19NR2E22_44

IN02_T19NR2E23_36

CORNER WITNESS DETAIL

SCALE 1" = 40'

- A - Boone County witness mark, flush, 27.40'
- B - Boone County witness mark, flush, 23.20'
- C - Boone County witness mark, flush, 17.94'

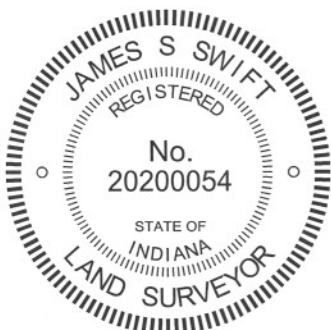
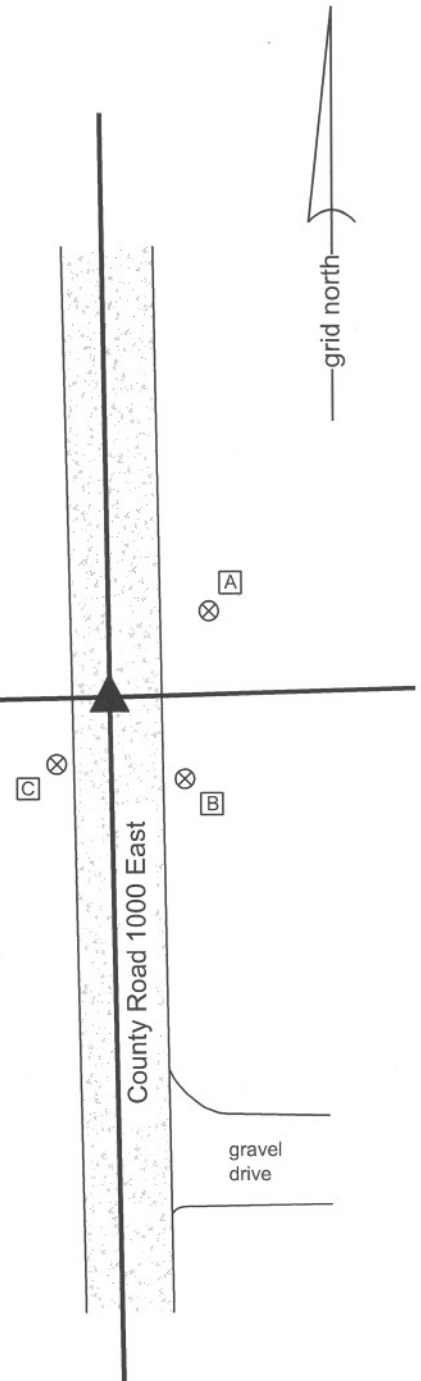
Boone County witness mark is a 3/8" diameter x 2' long rebar bearing a metal cap stamped "Boone County Witness Point."

The harrison monument was set in place of a stone found.

No specific descriptions of this corner were found in the BCS Surveyor's Record, though the corner is noted as the terminal point for measurements in 1835, 1836 and 1862. A BCS tie card dated August 6, 1874 states "stone found."

This corner was excavated on September 21, 2011. Prior to excavation at 5/8 inch diameter rebar with a red plastic cap (markings not distinguishable) was found 7 inches deep in a hole chiseled in the asphalt. Excavation revealed a stone found at 15 inches deep, 0.4 foot south and 0.7' west of the rebar. The stone was 7 inches N-S by 7 inches E-W by 6 inches tall, fully embedded in the clay layer below the road with the top of the stone at the top of the clay layer and bottom of the base of the road. No other evidence was found. The stone is smaller than many corner stones but was found to be fully embedded in the clay layer and did not appear to be part of the road bed. The rebar is not typical of a monument found associated with 1974 BCS tie cards. Based on evidence found during excavation at other corners in this area, 1974 appears to be a transitional year with respect to monuments set by the Surveyor's Office, with railroad rails set in the spring and early summer and 1/2 inch diameter rebars set in the later summer. Unlike previous years, the field crews in 1974 did not uniformly remove stones if found. Some stones were removed while some were left in place, but the difference was not always documented on the field notes or tie cards. The capped 5/8 inch diameter rebar definitely does not fit the type of monumentation expected from the 1974 field crew. It is accepted as most likely that the same stone found during the current excavation was found at that time and left in place. No ties remain from the 1974 notes. The stone was held as marking the corner and was replaced with a harrison monument. The found rebar was removed during excavation.

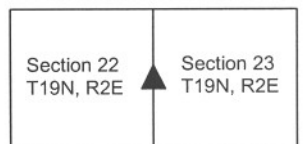
This corner was originally established as a wood post in July, 1821.



Kenneth E. Hedge
 Kenneth E. Hedge, County Surveyor

James S. Swift
 James S. Swift, IN LS 20200054
 March 1, 2012

Marion Township



PHOTOGRAPHIC DOCUMENTATION

Date of photography: September 21, 2011

View of the stone as first exposed.



The stone removed from the road.



For details and documentation, refer to related sheet "Section Corner Record."

SECTION CORNER RECORD

NE 250-1100

BOONE COUNTY SURVEYOR'S OFFICE

State Plane grid coordinates NAD83 (CORS96):

North: 1760022.16' East: 3182955.70 (U.S. survey feet)

Type of monument: Harrison, 4" disk 'Section Corner'

Depth: six inches below adjacent gravel road surface

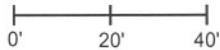
Indiana tie card references:

IN02_T19NR2E23_44

IN02_T19NR2E24_36

CORNER WITNESS DETAIL

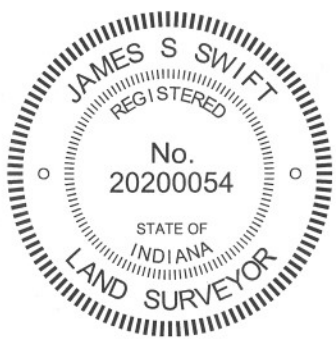
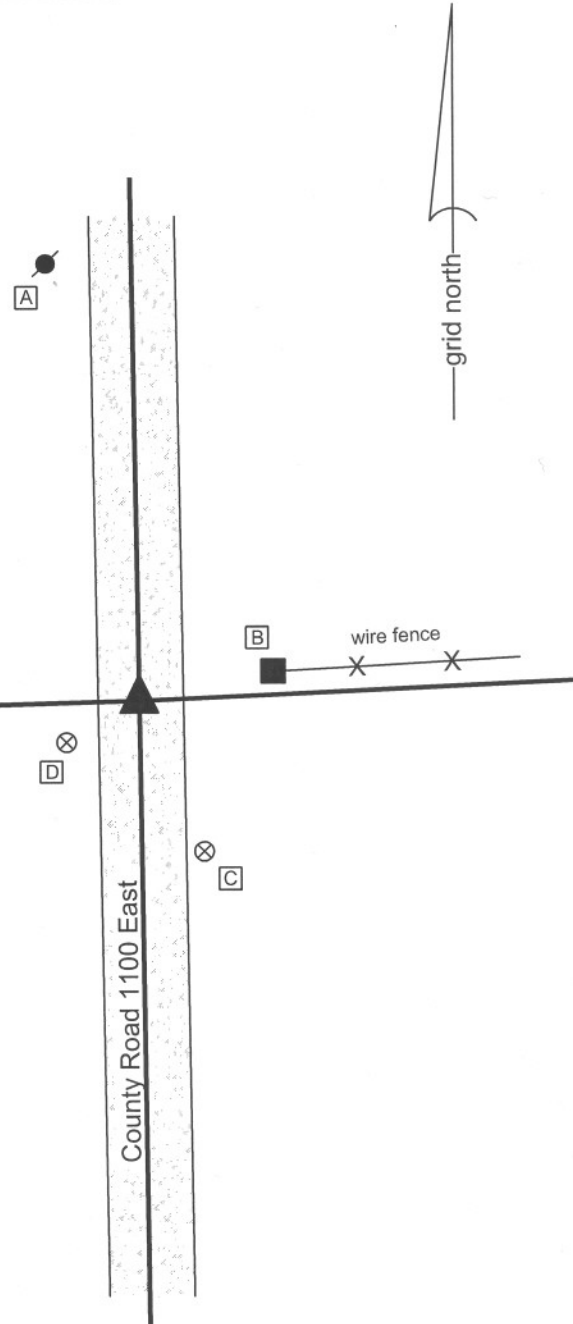
SCALE 1" = 40'



- A - Mag nail set in S. side power pole, 2' a.g., 91.07'
- B - Mag nail set in W. side wood post, 4 in. a.g., 26.00'
- C - Boone County witness mark, flush, 33.94'
- D - Boone County witness mark, flush 17.38'

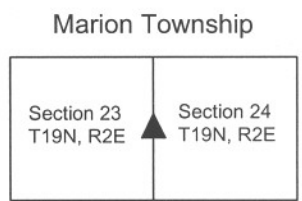
Boone County witness mark is a 3/8" diameter x 2' long rebar bearing a metal cap stamped "Boone County Witness Point."

The harrison monument was set over a stone found.
 A BCS record of September 29, 1879 states "Found from stump of Oak. Set Rock 18,13,7 +." A BCS tie card dated August 5, 1974 states "no stone found."
 This corner was excavated on February 24, 2011. Prior to excavation a 1/2 inch diameter rebar was found at 2 inches below grade. This monument was most likely set in association with the 1974 tie card. Excavation revealed the stone described in the 1879 record at 7 inches deep. The stone measures 18 inches tall by 13 inches N-S by 7 inches E-W. The stone is fully embedded in the clay layer below the road with the top of the stone at the bottom of the road bed. Although the 1879 record calls for a mark on the stone, no specific markings were found. An etched "+" on the top may have been worn off in the past. The stone was left in place and a harrison monument was set over the top, high point of the stone, towards the south edge of the rock. The rebar, removed during excavation, had been 1.9 feet west and 0.6 feet south of the stone.
 This corner was originally established as a wood post in July, 1821.



Kenneth E. Hedge
 Kenneth E. Hedge, County Surveyor

James S. Swift
 James S. Swift, IN LS 20200054
 March 1, 2012, revised April 30, 2012



PHOTOGRAPHIC DOCUMENTATION

Date of photography: February 24, 2011

View of the stone as first exposed.



View of the stone partially exposed.



View of the stone removed from the road.



View of the stone removed from the road.



For details and documentation, refer to related sheet "Section Corner Record."

SECTION CORNER RECORD

NE 300-1000

BOONE COUNTY SURVEYOR'S OFFICE

State Plane grid coordinates NAD83 (2011):

North: 1762530.92 East: 3177594.07 (U.S. survey feet)

Type of monument: Harrison, 4" disk 'Section Corner'

Depth: flush with adjacent road surface

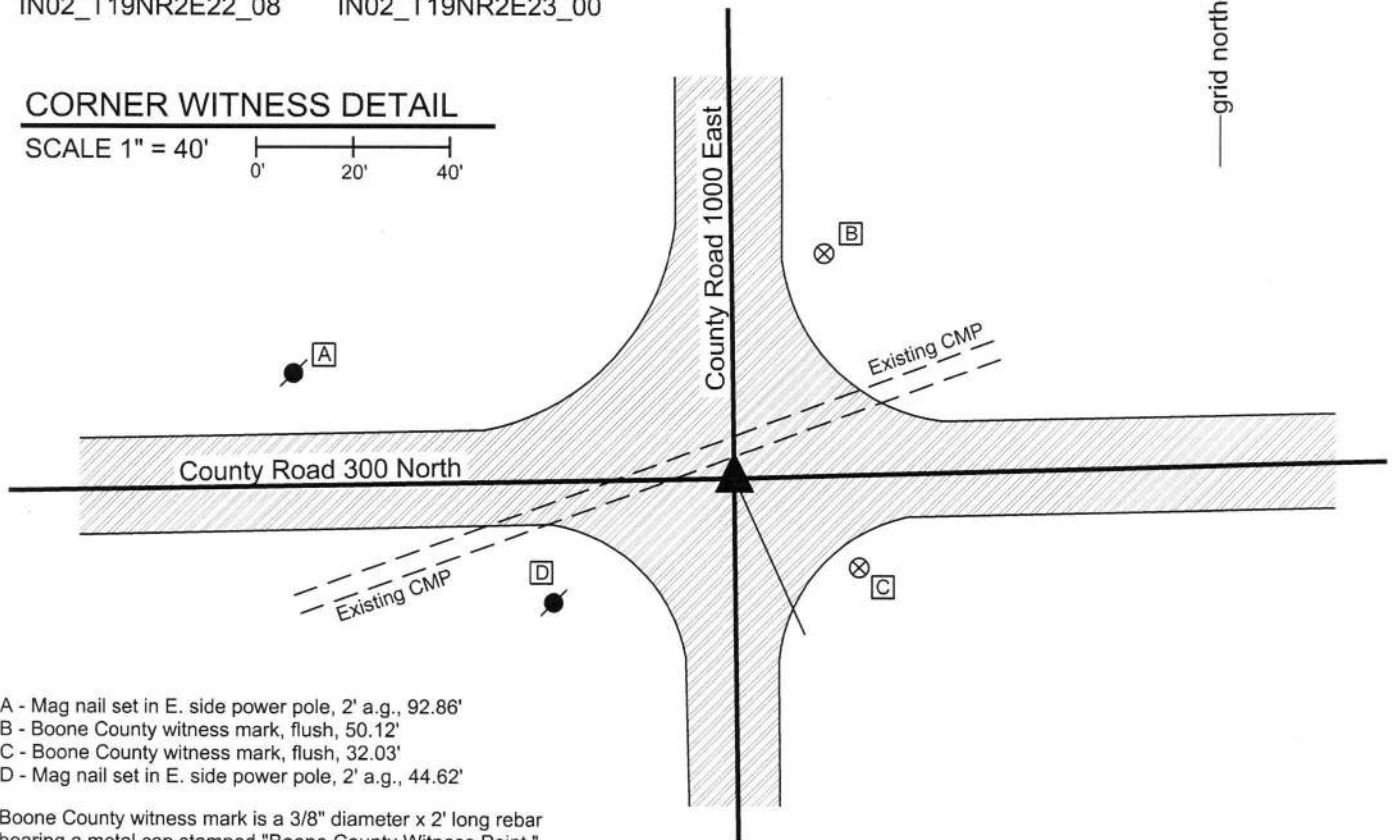
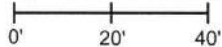
Indiana tie card references:

IN02_T19NR2E15_80 IN02_T19NR2E14_72

IN02_T19NR2E22_08 IN02_T19NR2E23_00

CORNER WITNESS DETAIL

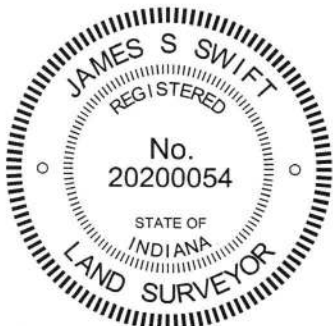
SCALE 1" = 40'



- A - Mag nail set in E. side power pole, 2' a.g., 92.86'
- B - Boone County witness mark, flush, 50.12'
- C - Boone County witness mark, flush, 32.03'
- D - Mag nail set in E. side power pole, 2' a.g., 44.62'

Boone County witness mark is a 3/8" diameter x 2' long rebar bearing a metal cap stamped "Boone County Witness Point."

The Harrison monument was set in the same position as a Harrison monument previously set. This corner is dominated by the presence of a large culvert pipe crossing the intersection from the southwest to the northeast quadrant, the installation of which would have destroyed any ancient evidence or monumentation at the actual corner. A witness stone described in an 1862 record as being southeast of the corner was not found. In 2011, a P.K. nail found at the center of the intersection was replaced with a Harrison Monument in the same position. Subsequently, the culvert pipe was replaced by the Boone County Highway Department, during which process the Harrison monument was removed. This monument was replaced with another Harrison monument in October, 2015.



Kenneth E. Hedge
Kenneth E. Hedge, County Surveyor

James S. Swift
James S. Swift, IN LS 20200054
March 23, 2017

Marion Township

Section 15 T19N, R2E	Section 14 T19N, R2E
Section 22 T19N, R2E	Section 23 T19N, R2E

SECTION CORNER RECORD

NE 300-1050

BOONE COUNTY SURVEYOR'S OFFICE

State Plane grid coordinates NAD83 (CORS96):

North: 1762605.49 East: 3180253.53 (U.S. survey feet)

Type of monument: Harrison, 4" disk 'Section Corner'

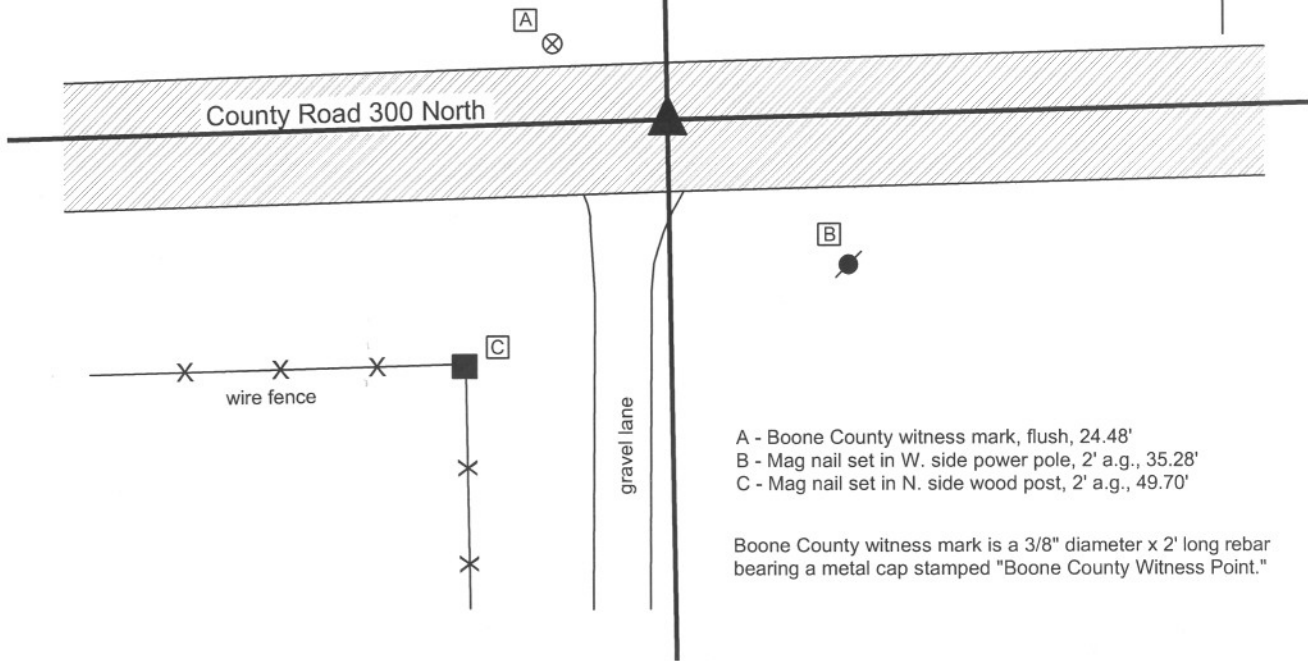
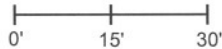
Depth: One inch below adjacent road surface

Indiana tie card references:

IN02_T19NR2E14_76 IN02_T19NR2E23_04

CORNER WITNESS DETAIL

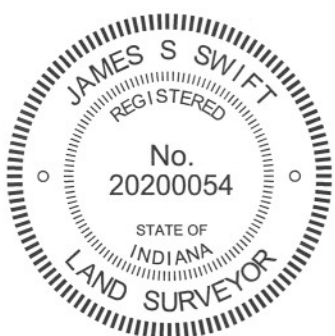
SCALE 1" = 30'



- A - Boone County witness mark, flush, 24.48'
- B - Mag nail set in W. side power pole, 2' a.g., 35.28'
- C - Mag nail set in N. side wood post, 2' a.g., 49.70'

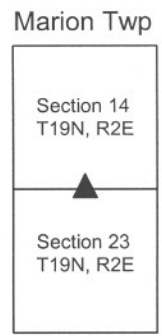
Boone County witness mark is a 3/8" diameter x 2' long rebar bearing a metal cap stamped "Boone County Witness Point."

The harrison monument was set over a stone found.
 A BCS record of November 25, 1910 states "Found rock here 12.60 north of rock set by Huckstep; rock at B found to be correct by other measurements." It is noted that "B" refers to this corner, as noted on the diagram of section 23. It is also noted that the reference to Huckstep is a reference to a record of March 12, 1894 which shows a rock set a corner denoted "t" with the explanation "Reestablished 12.60 South of B. Set Rock + 18.12.7 at corner. Set Rock + 2 1/2.6.5 under."
 A BCS tie card dated April 17, 1972 states "no stone, RRR put in." A BCS tie card dated June 3, 1974 states "no stone found."
 This corner was excavated on October 25, 2011. Prior to excavation a railroad rail was found 2 inches deep in a hole in the asphalt. Excavation revealed a stone found at 27 inches deep. The stone is embedded in the clay layer below the road bed with the top of the stone at the bottom of the road bed. With the top 7 inches of the stone exposed it measures 13 inches E-W by 12 inches N-S. The total height of the stone was not measured. No specific marks were found on the stone. The portion of the stone exposed is generally round. The top high point, which is the same as the top, center point was held as specifically making the corner. A harrison monument was set directly above this point.
 The railroad rail, removed during excavation, had been 0.3 foot south and 0.9 foot west of the stone.
 This corner was originally established as a wood post in July, 1821.



Kenneth E. Hedge
 Kenneth E. Hedge, County Surveyor

James S. Swift
 James S. Swift, IN LS 20200054
 March 1, 2012



PHOTOGRAPHIC DOCUMENTATION

Date of photography: March 25, 2011

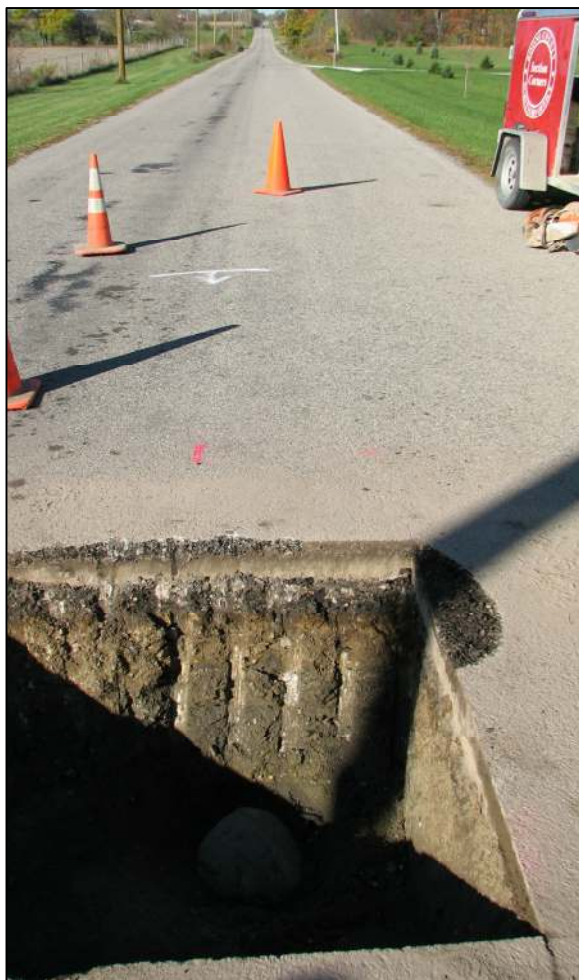
View of the stone as first exposed.



View of the stone from the east.



View from the east, looking across the stone (in shadows) and west along County Road 300 North.



Same view as above after the stone had been exposed to the air long enough to dry.



View of the stone from above.



For details and documentation, refer to related sheet "Section Corner Record."

SECTION CORNER RECORD

NE 300-1100

BOONE COUNTY SURVEYOR'S OFFICE

State Plane grid coordinates NAD83 (NSRS 2007):

North: 1762667.88 East: 3182916.59 (U.S. survey feet)

Type of monument: Harrison, 4" disk 'Section Corner'

Depth: One inch below adjacent road surface

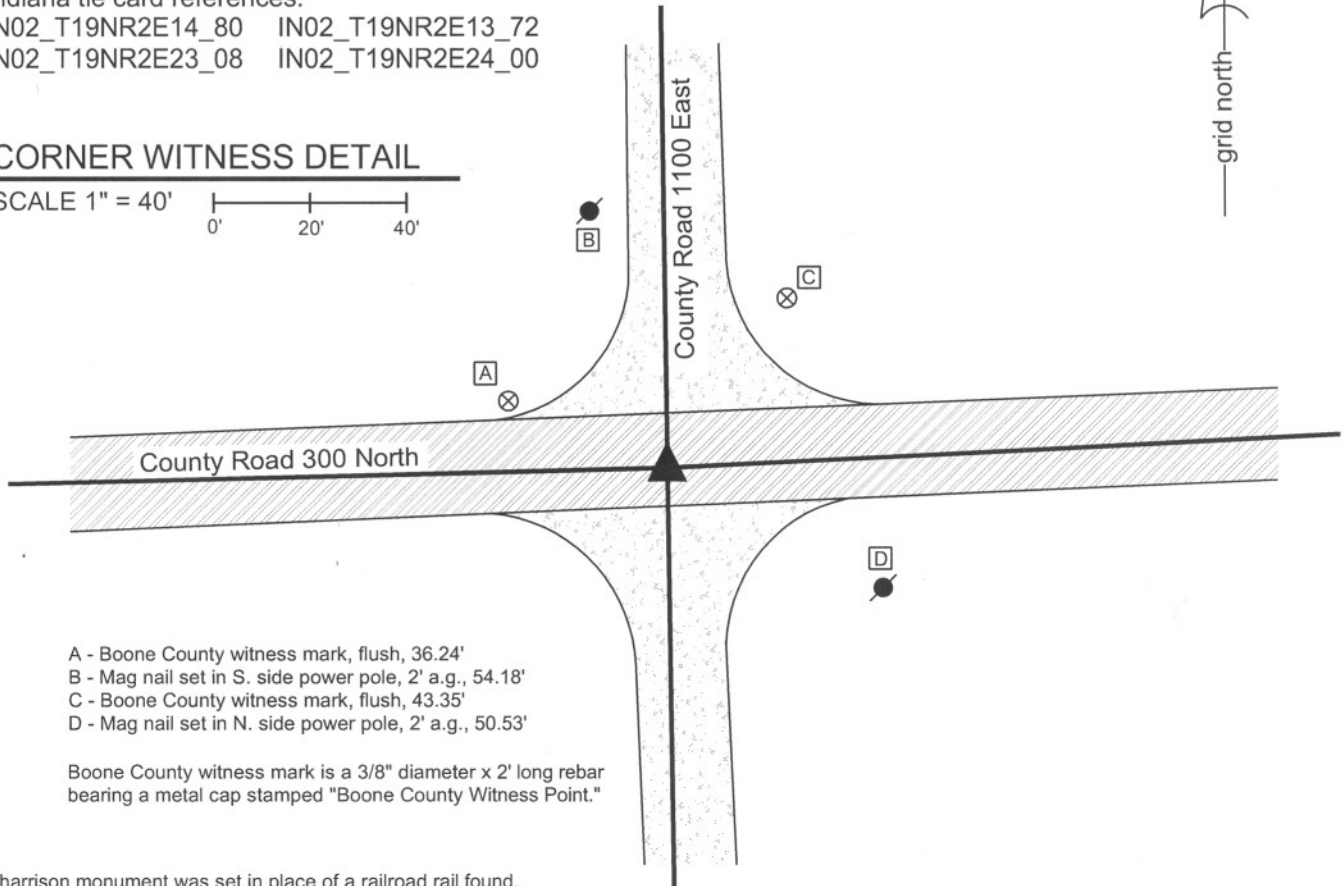
Indiana tie card references:

IN02_T19NR2E14_80 IN02_T19NR2E13_72

IN02_T19NR2E23_08 IN02_T19NR2E24_00

CORNER WITNESS DETAIL

SCALE 1" = 40'



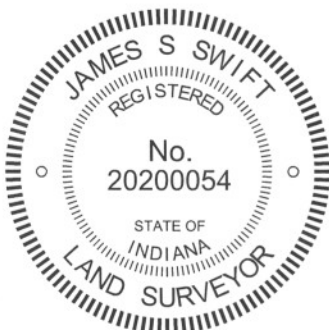
- A - Boone County witness mark, flush, 36.24'
- B - Mag nail set in S. side power pole, 2' a.g., 54.18'
- C - Boone County witness mark, flush, 43.35'
- D - Mag nail set in N. side power pole, 2' a.g., 50.53'

Boone County witness mark is a 3/8" diameter x 2' long rebar bearing a metal cap stamped "Boone County Witness Point."

The Harrison monument was set in place of a railroad rail found.

A BCS record of January 20 & 26, 1900 states "dropped large rock at point." A BCS record of January 17, 1925 states "Rock, found in place (set two more rocks above)." No BCS tie card was found referencing this corner, but field notes from a BCS crew dated June 17, 1974 states "No stone. Found RRR." This corner was excavated on September 3, 2010. Prior to excavation a mag nail was visible in a hole at 2 inches below the surrounding asphalt. Excavation revealed a vertical section of railroad rail at 4 inches deep, below the nail. No other evidence of the corner was found in an area of excavation which extended to 4.5 feet N, 4.5 feet S, 2.5 feet W and 5.0 feet E of the mag and rail. The clay layer below the road begins at 2.5 feet deep. Excavation extended to or into the top of the clay layer. The stones called for in the previous records were not found. It is noted that the rail was found in 1974 but no source information was found pertaining to the establishment of the rail. It is known that the standard procedure of BCS field crews in the late 1960s and early 1970s was to remove a stone or stones, if found, and replace it or them with a vertical section of rail. It is also known that rails were set in that era in the event that no stone was found. The presence of the rail may indicate that the record stones were found, removed and replaced with the rail prior to the 1974 field work, but no record was found to demonstrate this and it is not known whether the rail replaced the stones or was set independently. The Harrison monument was set in the position of the found nail and rail, both removed during excavation.

This corner was originally established as a wood post in June, 1821.



Kenneth E. Hedge
 Kenneth E. Hedge, County Surveyor

James S. Swift
 James S. Swift, IN LS 20200054
 July 25, 2011

Marion Township

Section 14 T19N, R2E	Section 13 T19N, R2E
Section 23 T19N, R2E	Section 24 T19N, R2E