

SECTION CORNER RECORD

BOONE COUNTY SURVEYOR'S OFFICE

NE 200-400

State Plane grid coordinates NAD83 (CORS96):
 North: 1756371.85 East: 3145690.21 (U.S. survey feet)

Type of monument: Harrison, 4" disk 'Section Corner'
 Depth: six inches below adjacent gravel road surface

Indiana tie card references:
 IN02_T19NR1E22_80 IN02_T19NR1E23_72
 IN02_T19NR1E27_08 IN02_T19NR1E26_00

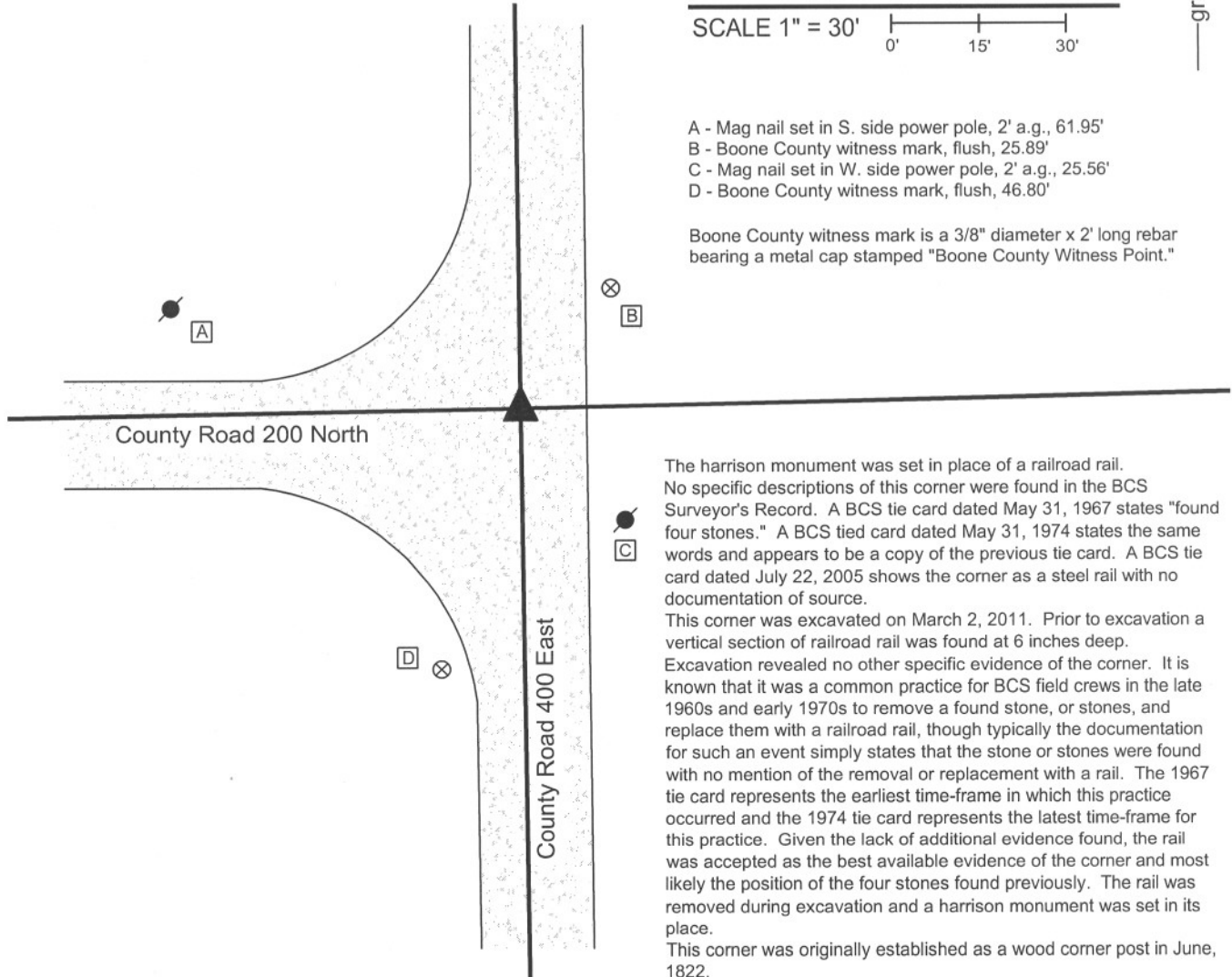
CORNER WITNESS DETAIL

SCALE 1" = 30'



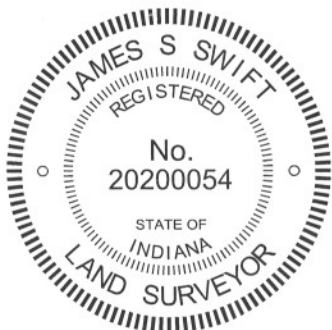
- A - Mag nail set in S. side power pole, 2' a.g., 61.95'
- B - Boone County witness mark, flush, 25.89'
- C - Mag nail set in W. side power pole, 2' a.g., 25.56'
- D - Boone County witness mark, flush, 46.80'

Boone County witness mark is a 3/8" diameter x 2' long rebar bearing a metal cap stamped "Boone County Witness Point."



The harrison monument was set in place of a railroad rail. No specific descriptions of this corner were found in the BCS Surveyor's Record. A BCS tie card dated May 31, 1967 states "found four stones." A BCS tied card dated May 31, 1974 states the same words and appears to be a copy of the previous tie card. A BCS tie card dated July 22, 2005 shows the corner as a steel rail with no documentation of source.

This corner was excavated on March 2, 2011. Prior to excavation a vertical section of railroad rail was found at 6 inches deep. Excavation revealed no other specific evidence of the corner. It is known that it was a common practice for BCS field crews in the late 1960s and early 1970s to remove a found stone, or stones, and replace them with a railroad rail, though typically the documentation for such an event simply states that the stone or stones were found with no mention of the removal or replacement with a rail. The 1967 tie card represents the earliest time-frame in which this practice occurred and the 1974 tie card represents the latest time-frame for this practice. Given the lack of additional evidence found, the rail was accepted as the best available evidence of the corner and most likely the position of the four stones found previously. The rail was removed during excavation and a harrison monument was set in its place. This corner was originally established as a wood corner post in June, 1822.



Kenneth E. Hedge
 Kenneth E. Hedge, County Surveyor

James S. Swift
 James S. Swift, IN LS 20200054
 March 1, 2012

Center Township

Section 22 T19N, R1E	Section 23 T19N, R1E
Section 27 T19N, R1E	Section 26 T19N, R1E

SECTION CORNER RECORD

NE 200-450

BOONE COUNTY SURVEYOR'S OFFICE

State Plane grid coordinates NAD83 (2011):

North: 1756421.53 East: 3148324.56 (U.S. survey feet)

Type of monument: Harrison, 4" disk 'Section Corner'

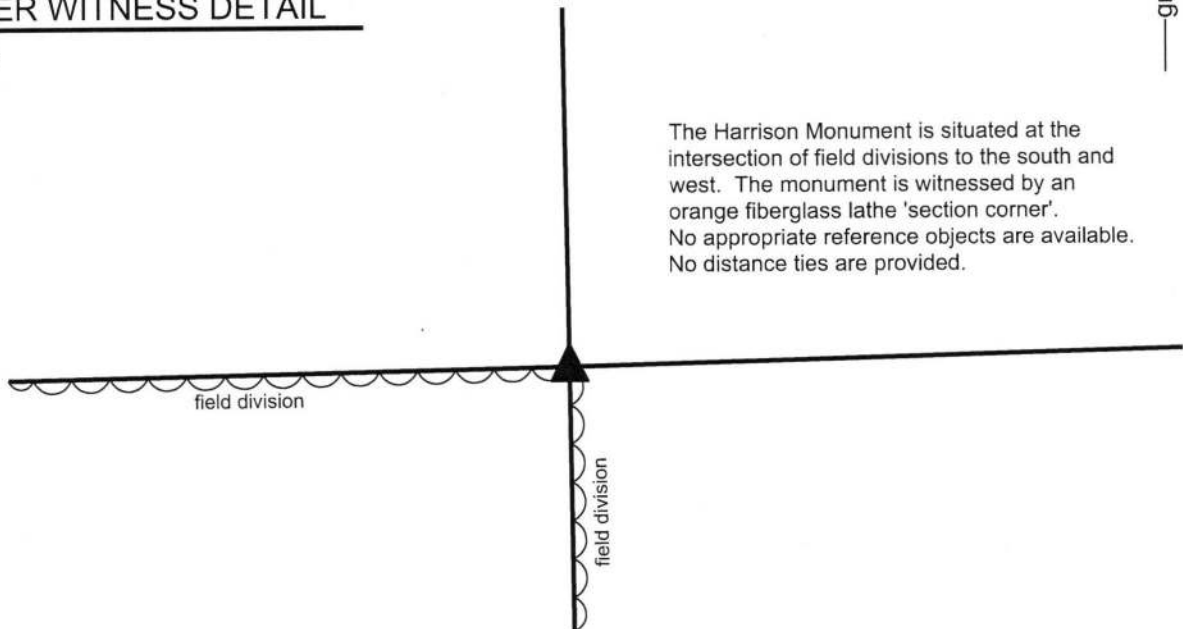
Depth: One inch above adjacent ground

Indiana tie card references:

IN02_T19NR1E23_76 IN02_T19NR1E26_04

CORNER WITNESS DETAIL

No scale



The Harrison Monument is situated at the intersection of field divisions to the south and west. The monument is witnessed by an orange fiberglass lathe 'section corner'. No appropriate reference objects are available. No distance ties are provided.

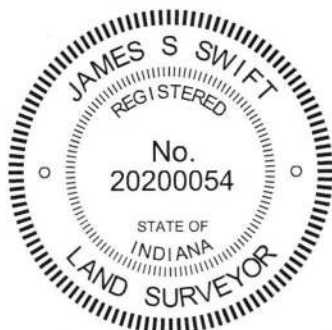
The Harrison monument was set over the subterranean base of a wood corner post.

A BCS record dated August 4-5, 1868 states, with respect to this corner, "Reestablished from Trees, drove stake."


A BCS tie card dated August 16, 2005 shows the corner as a PK Nail set in top of wood corner post. The document demonstrates the post to be at the intersection of fences to the south and west.

This corner was excavated on October 19, 2017. Prior to excavation, an ancient wood corner post was found lying on the ground at the intersection of field divisions to the south and west. The subterranean base of the post was found in general agreement with the coordinates shown on the 2005 tie card. Excavation around the post revealed no other evidence of the corner. The post was accepted as providing the best available evidence of the corner and was held as marking the corner. The post is 8 inch by 8 inch cedar. The base of the post, underground, was completely solid and appeared to have decayed minimally. The upper most portion of the top of the base of the post was sawed off. Approximately the top 12 inches of the remainder of the base of the post was encased in concrete and the Harrison monument was set directly over the remaining portion of the base of the post. The fences shown on the 2005 tie card are no longer present.

This corner was originally established as a wood post in 1822.




Kenneth E. Hedge, County Surveyor


James S. Swift, IN LS 20200054
October 31, 2017

Center Twp

Section 23
T19N, R1E

Section 26
T19N, R1E

SECTION CORNER RECORD

BOONE COUNTY SURVEYOR'S OFFICE


NE 200-500

State Plane grid coordinates NAD83 (CORS96):
 North: 1756487.56 East: 3150955.66 (U.S. survey feet)

Type of monument: Harrison, 4" disk 'Section Corner'
 Depth: One inch below adjacent road surface

Indiana tie card references:
 IN02_T19NR1E23_80 IN02_T19NR1E24_72
 IN02_T19NR1E26_08 IN02_T19NR1E25_00

CORNER WITNESS DETAIL

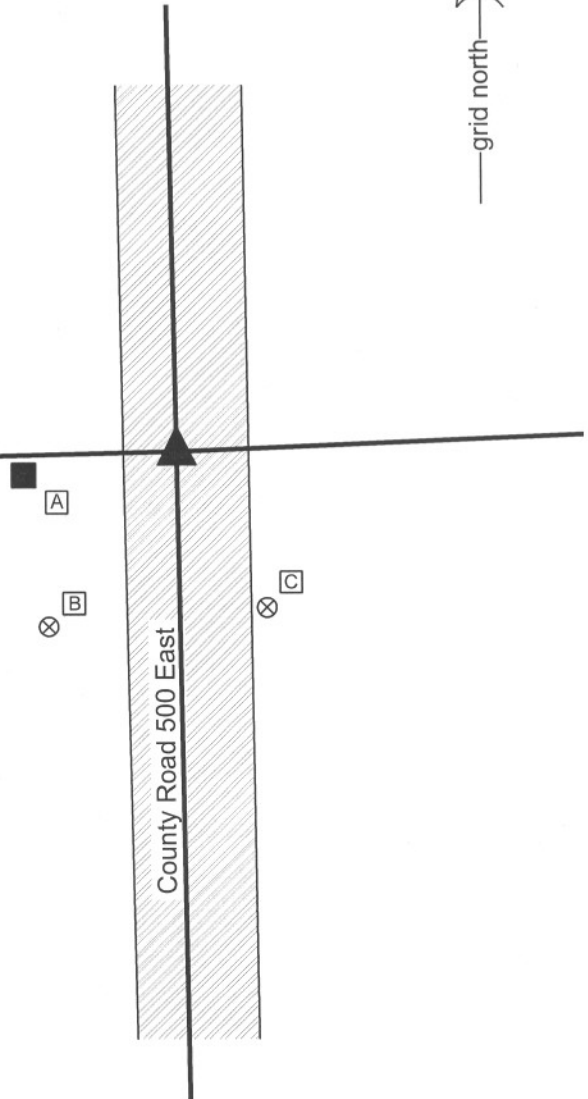
SCALE 1" = 30' 

- A - Mag nail set in E. side wood post, 1' a.g., 23.47'
- B - Boone County witness mark, flush, 28.21'
- C - Boone County witness mark, flush, 33.91'

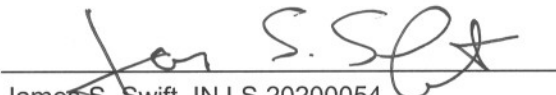
Boone County witness mark is a 3/8" diameter x 2' long rebar bearing a metal cap stamped "Boone County Witness Point."



The harrison monument was set over a stone found.
 A BCS record of March 25, 1903 calls for a rock set 5,8,17 + on top. This record also calls for intermediate corners which are not shown on the diagram for the section and may be describing another section. The corner is shown as a terminal point for measurements in 1860. A BCS tie card dated 1991 show the corner as a steel rail found. A BCS tie card dated August 3, 2005 show the corner as a harrison monument with no documentation of source.
 This corner was excavated on March 30, 2011. Prior to excavation a harrison monument was found at the surface. Excavation revealed a railroad rail found at 6 inches deep, below the harrison. Further excavation revealed two stones. The upper stone was a small stone found the in the fill material. The lower stone, found directly below the upper stone, was fully embedded in the clay layer below the road, protruding approximately 1 inch into the bottom of the road bed. With the top 8 inches of the stone exposed, it measures 12 inches N-S by 6 inches E-W, oriented N-S with a distinct N-S ridge and a clear high point on the top, center of the ridge. The east side of the stone is vertical and the west side slopes. The full height of the stone was not measured. The dimensions of the stone do not match the aforementioned 1903 record, but some question exists with respect to this record. The stone does match the characteristics of stones found marking other corners, being vertical, oriented in cardinal directions and embedded in the clay layer below the road. The stone was accepted as the best evidence of the corner and the distinct high point on the N-S ridge was held as marking the corner. The stone was left in place and the harrison monument set above it. The railroad rail and harrison monument, both removed during excavation, had been 2.4' feet south and 0.4 foot east of the stone.
 This corner was originally established as a wood post in June, 1822.




 Kenneth E. Hedge, County Surveyor


 James S. Swift, IN LS 20200054
 March 1, 2012

Center Township

Section 23 T19N, R1E	Section 24 T19N, R1E
Section 26 T19N, R1E	Section 25 T19N, R1E

PHOTOGRAPHIC DOCUMENTATION

Date of photography: March 30, 2011

View of the stone as first exposed. The small rock found in the fill is on the asphalt to the right.



View of the stone from above and west.



View from above the stone looking south along County Road 500 East.



View of the stone from above and south.



For details and documentation, refer to related sheet "Section Corner Record."

SECTION CORNER RECORD

BOONE COUNTY SURVEYOR'S OFFICE

NE 250-400

State Plane grid coordinates NAD83 (CORS96):

North: 1759019.50 East: 3145662.06 (U.S. survey feet)

Type of monument: Harrison, 4" disk 'Section Corner'

Depth: six inches below adjacent gravel road surface

Indiana tie card references:

IN02_T19NR1E22_44

IN02_T19NR1E23_36

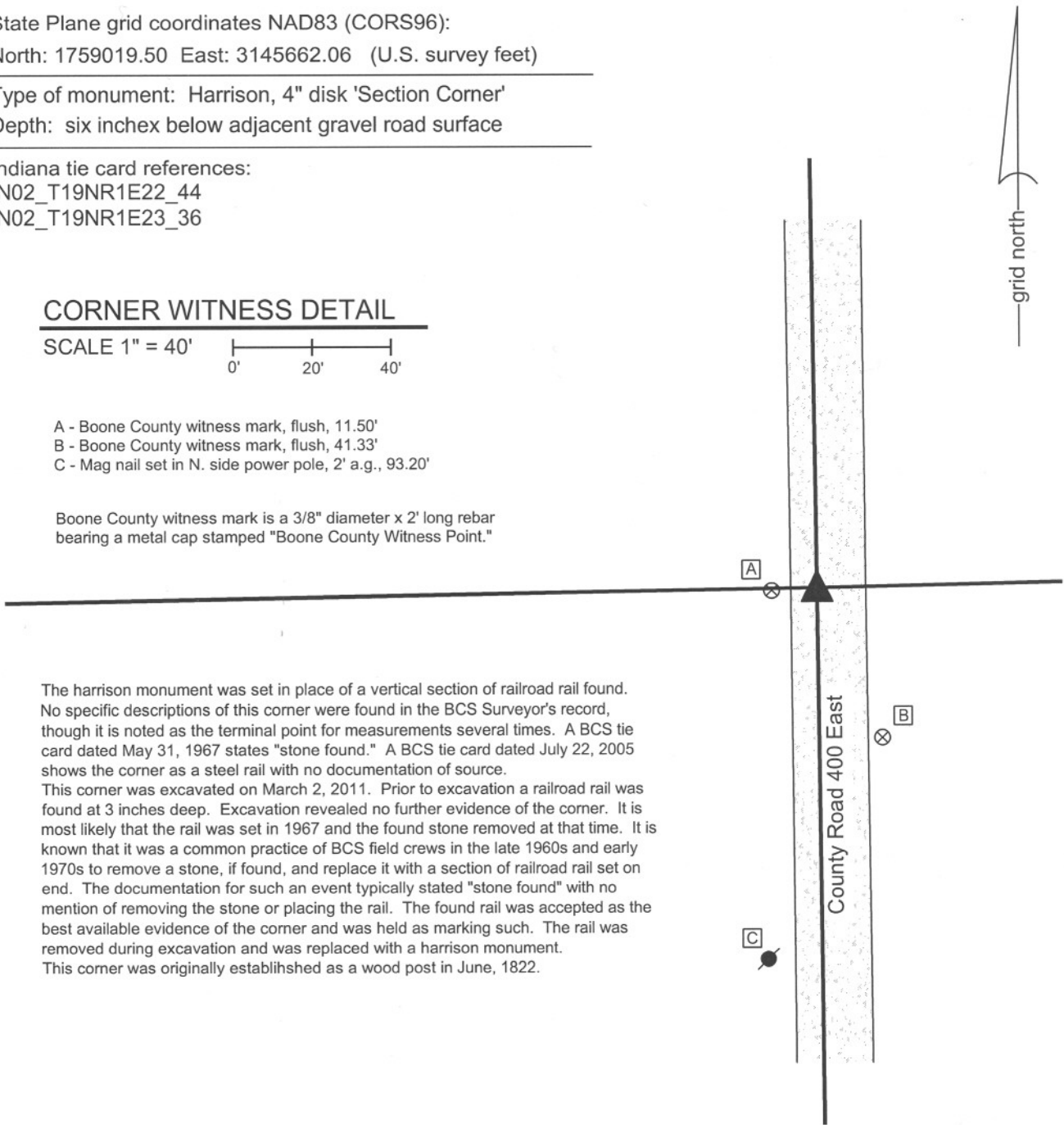
CORNER WITNESS DETAIL

SCALE 1" = 40'

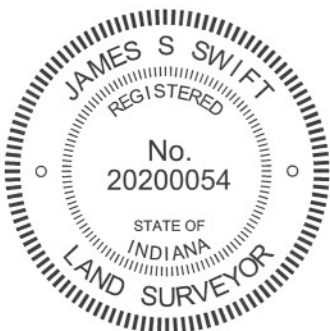


- A - Boone County witness mark, flush, 11.50'
- B - Boone County witness mark, flush, 41.33'
- C - Mag nail set in N. side power pole, 2' a.g., 93.20'

Boone County witness mark is a 3/8" diameter x 2' long rebar bearing a metal cap stamped "Boone County Witness Point."

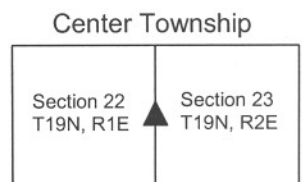


The Harrison monument was set in place of a vertical section of railroad rail found. No specific descriptions of this corner were found in the BCS Surveyor's record, though it is noted as the terminal point for measurements several times. A BCS tie card dated May 31, 1967 states "stone found." A BCS tie card dated July 22, 2005 shows the corner as a steel rail with no documentation of source. This corner was excavated on March 2, 2011. Prior to excavation a railroad rail was found at 3 inches deep. Excavation revealed no further evidence of the corner. It is most likely that the rail was set in 1967 and the found stone removed at that time. It is known that it was a common practice of BCS field crews in the late 1960s and early 1970s to remove a stone, if found, and replace it with a section of railroad rail set on end. The documentation for such an event typically stated "stone found" with no mention of removing the stone or placing the rail. The found rail was accepted as the best available evidence of the corner and was held as marking such. The rail was removed during excavation and was replaced with a Harrison monument. This corner was originally established as a wood post in June, 1822.



Kenneth E. Hedge
 Kenneth E. Hedge, County Surveyor

James S. Swift
 James S. Swift, IN LS 20200054
 March 1, 2012



SECTION CORNER RECORD

NE 250-500

BOONE COUNTY SURVEYOR'S OFFICE

State Plane grid coordinates NAD83 (CORS96):

North: 1759135.50 East: 3150904.29 (U.S. survey feet)

Type of monument: Harrison, 4" disk 'Section Corner'

Depth: One inch below adjacent road surface

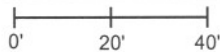
Indiana tie card references:

IN02_T19NR1E23_44

IN02_T19NR1E24_36

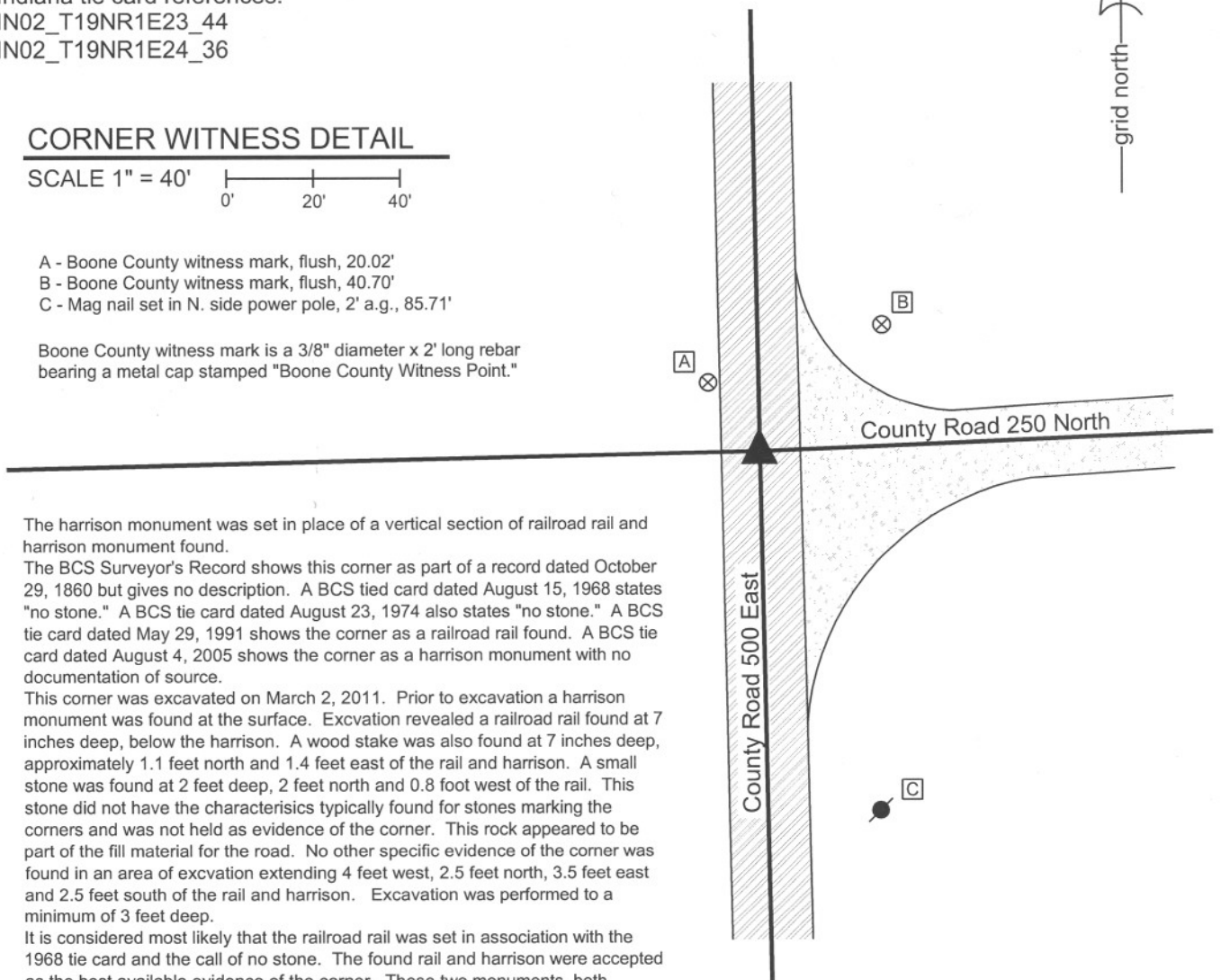
CORNER WITNESS DETAIL

SCALE 1" = 40'



- A - Boone County witness mark, flush, 20.02'
- B - Boone County witness mark, flush, 40.70'
- C - Mag nail set in N. side power pole, 2' a.g., 85.71'

Boone County witness mark is a 3/8" diameter x 2' long rebar bearing a metal cap stamped "Boone County Witness Point."



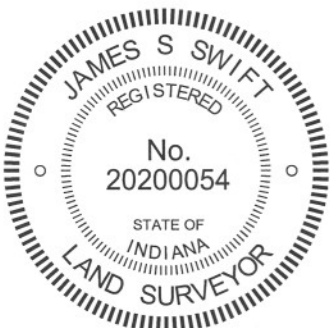
The harrison monument was set in place of a vertical section of railroad rail and harrison monument found.

The BCS Surveyor's Record shows this corner as part of a record dated October 29, 1860 but gives no description. A BCS tied card dated August 15, 1968 states "no stone." A BCS tie card dated August 23, 1974 also states "no stone." A BCS tie card dated May 29, 1991 shows the corner as a railroad rail found. A BCS tie card dated August 4, 2005 shows the corner as a harrison monument with no documentation of source.

This corner was excavated on March 2, 2011. Prior to excavation a harrison monument was found at the surface. Excavation revealed a railroad rail found at 7 inches deep, below the harrison. A wood stake was also found at 7 inches deep, approximately 1.1 feet north and 1.4 feet east of the rail and harrison. A small stone was found at 2 feet deep, 2 feet north and 0.8 foot west of the rail. This stone did not have the characteristics typically found for stones marking the corners and was not held as evidence of the corner. This rock appeared to be part of the fill material for the road. No other specific evidence of the corner was found in an area of excavation extending 4 feet west, 2.5 feet north, 3.5 feet east and 2.5 feet south of the rail and harrison. Excavation was performed to a minimum of 3 feet deep.

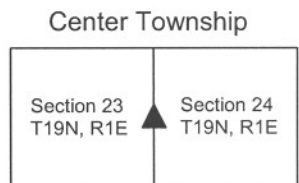
It is considered most likely that the railroad rail was set in association with the 1968 tie card and the call of no stone. The found rail and harrison were accepted as the best available evidence of the corner. These two monuments, both removed during excavation, were replaced with a new harrison monument set at the same position.

This corner was originally established as a wood post in June, 1822.



Kenneth E. Hedge
 Kenneth E. Hedge, County Surveyor

James S. Swift
 James S. Swift, IN LS 20200054
 March 1, 2012



SECTION CORNER RECORD

NE 300-400

BOONE COUNTY SURVEYOR'S OFFICE

State Plane grid coordinates NAD83 (CORS96):
North: 1761652.77 East: 3145628.76 (U.S. survey feet)

Type of monument: Harrison, 4" disk 'Section Corner'
Depth: six inches below adjacent gravel road surface

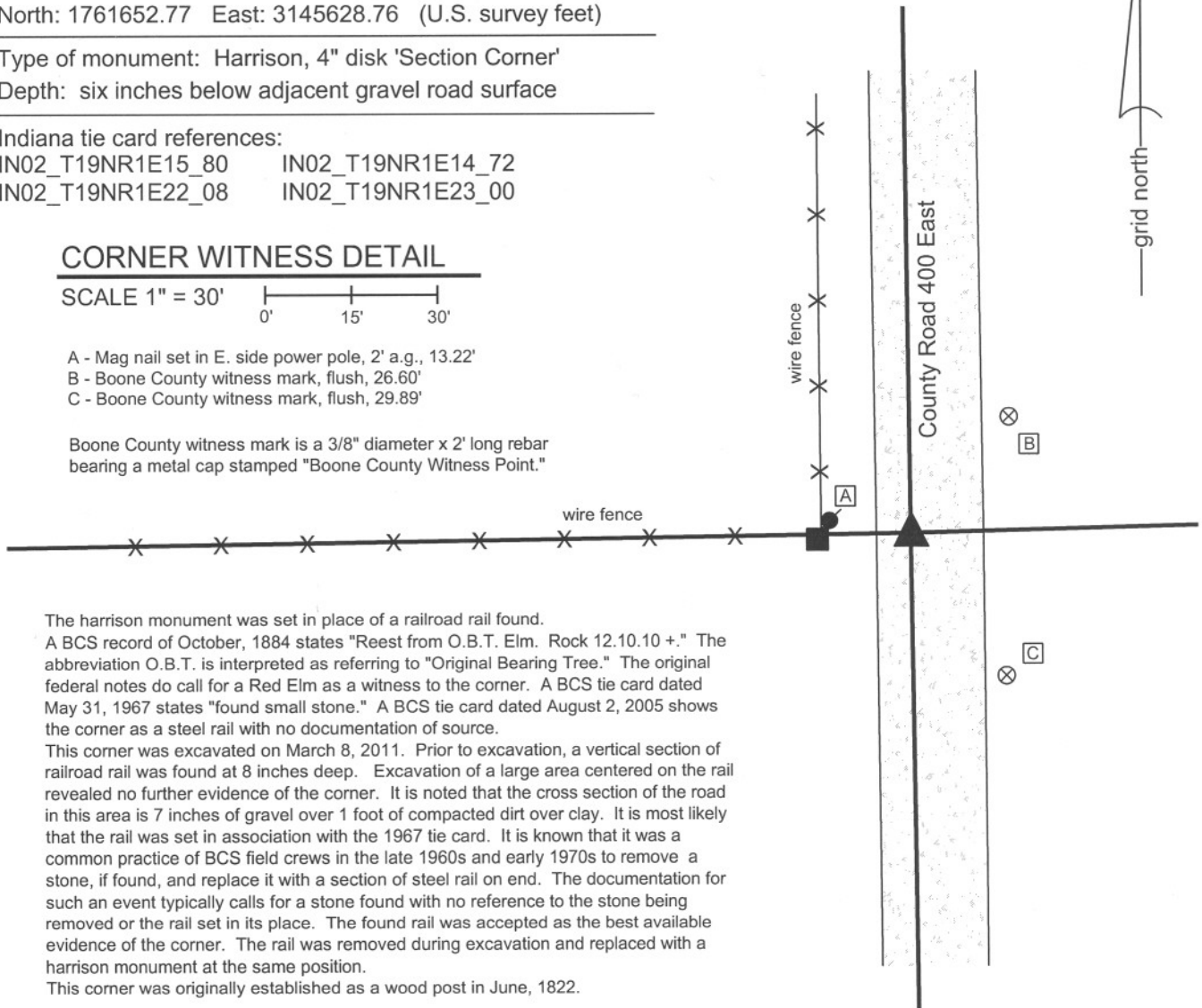
Indiana tie card references:
IN02_T19NR1E15_80 IN02_T19NR1E14_72
IN02_T19NR1E22_08 IN02_T19NR1E23_00

CORNER WITNESS DETAIL

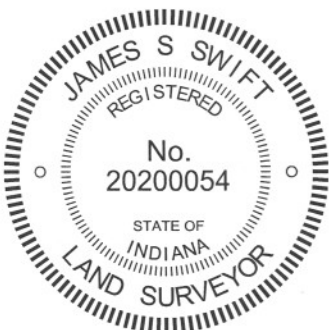
SCALE 1" = 30'
0' 15' 30'

- A - Mag nail set in E. side power pole, 2' a.g., 13.22'
- B - Boone County witness mark, flush, 26.60'
- C - Boone County witness mark, flush, 29.89'

Boone County witness mark is a 3/8" diameter x 2' long rebar bearing a metal cap stamped "Boone County Witness Point."



The harrison monument was set in place of a railroad rail found.
 A BCS record of October, 1884 states "Reest from O.B.T. Elm. Rock 12.10.10 +." The abbreviation O.B.T. is interpreted as referring to "Original Bearing Tree." The original federal notes do call for a Red Elm as a witness to the corner. A BCS tie card dated May 31, 1967 states "found small stone." A BCS tie card dated August 2, 2005 shows the corner as a steel rail with no documentation of source.
 This corner was excavated on March 8, 2011. Prior to excavation, a vertical section of railroad rail was found at 8 inches deep. Excavation of a large area centered on the rail revealed no further evidence of the corner. It is noted that the cross section of the road in this area is 7 inches of gravel over 1 foot of compacted dirt over clay. It is most likely that the rail was set in association with the 1967 tie card. It is known that it was a common practice of BCS field crews in the late 1960s and early 1970s to remove a stone, if found, and replace it with a section of steel rail on end. The documentation for such an event typically calls for a stone found with no reference to the stone being removed or the rail set in its place. The found rail was accepted as the best available evidence of the corner. The rail was removed during excavation and replaced with a harrison monument at the same position.
 This corner was originally established as a wood post in June, 1822.



Kenneth E. Hedge
 Kenneth E. Hedge, County Surveyor

James S. Swift
 James S. Swift, IN LS 20200054
 March 1, 2012

Center Township

Section 15 T19N, R1E	Section 14 T19N, R1E
Section 22 T19N, R1E	Section 23 T19N, R1E

SECTION CORNER RECORD

NE 300-450

BOONE COUNTY SURVEYOR'S OFFICE

State Plane grid coordinates NAD83 (2011):

North: 1761708.56 East: 3148248.51 (U.S. survey feet)

Type of monument: Harrison, 4" disk 'Section Corner'

Depth: Flush with adjacent ground

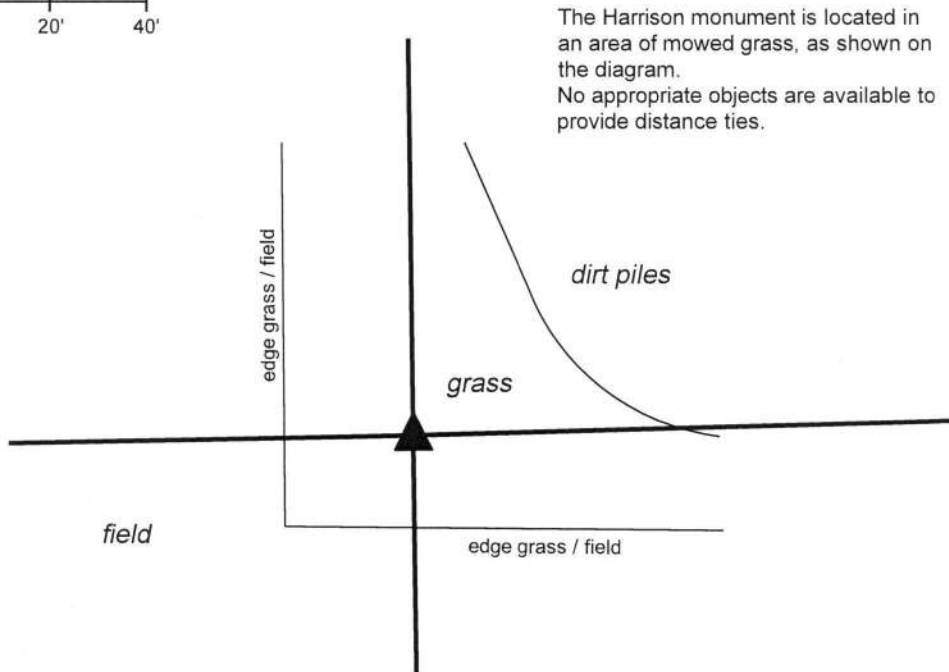
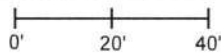
Indiana tie card references:

IN02_T19NR1E14_76 IN02_T19NR1E23_04



CORNER WITNESS DETAIL

SCALE 1" = 40'



The Harrison monument is located in an area of mowed grass, as shown on the diagram. No appropriate objects are available to provide distance ties.

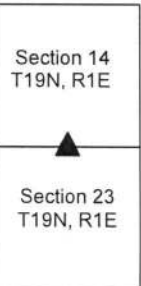
The Harrison monument was set in place of a Harrison monument found, adjacent to fragments of a cedar post. A BCS record of October 16, 1912 states, with respect to this corner, "Drove a redbud stake." A BCS tie card dated August 16, 2005 shows the corner as a Harrison monument with no documentation of source, south of a Hackberry tree and in-line with a fence to the north. This corner was excavated on April 26, 2018. Prior to excavation, the Harrison monument shown on the 2005 tie card was found with the top broken off but otherwise evidently undisturbed. The Hackberry tree and fence to the north were not present. Excavation in the vicinity of the Harrison monument revealed remnants of a cedar post adjacent to the found monument. The 2005 Harrison appears to have been set at the south edge of the post. A large stone was also found at the northwest edge of the remnants of the post. The stone appeared to be horizontal and no specific marks were observed on the top of the stone. It is noted that the stone was situated under the roots (now rotten) of the hackberry tree (now removed except for the rotten roots). No evidence of the redbud stake was found. Accepting approximately 1 foot of uncertainty for the position of the corner with respect to the found cedar post and found Harrison monument, the Harrison was held as marking the corner. Though the top of the monument had been broken off, the monument had been set with a substantial amount of concrete and the position of the monument appeared not to be disturbed. The Harrison monument was removed and replaced with a new monument in the same position. This corner was originally established as a wood post in 1821.



Kenneth E. Hedge
Kenneth E. Hedge, County Surveyor

James S. Swift
James S. Swift, IN LS 20200054
May 9, 2018

Center Township



SECTION CORNER RECORD

NE 300-500

BOONE COUNTY SURVEYOR'S OFFICE

State Plane grid coordinates NAD83 (CORS96):

North: 1761778.18 East: 3150857.57 (U.S. survey feet)

Type of monument: Harrison, 4" disk 'Section Corner'

Depth: One inch below adjacent road surface

Indiana tie card references:

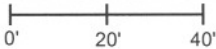
IN02_T19NR1E13_72

IN02_T19NR1E14_80

IN02_T19NR1E24_00

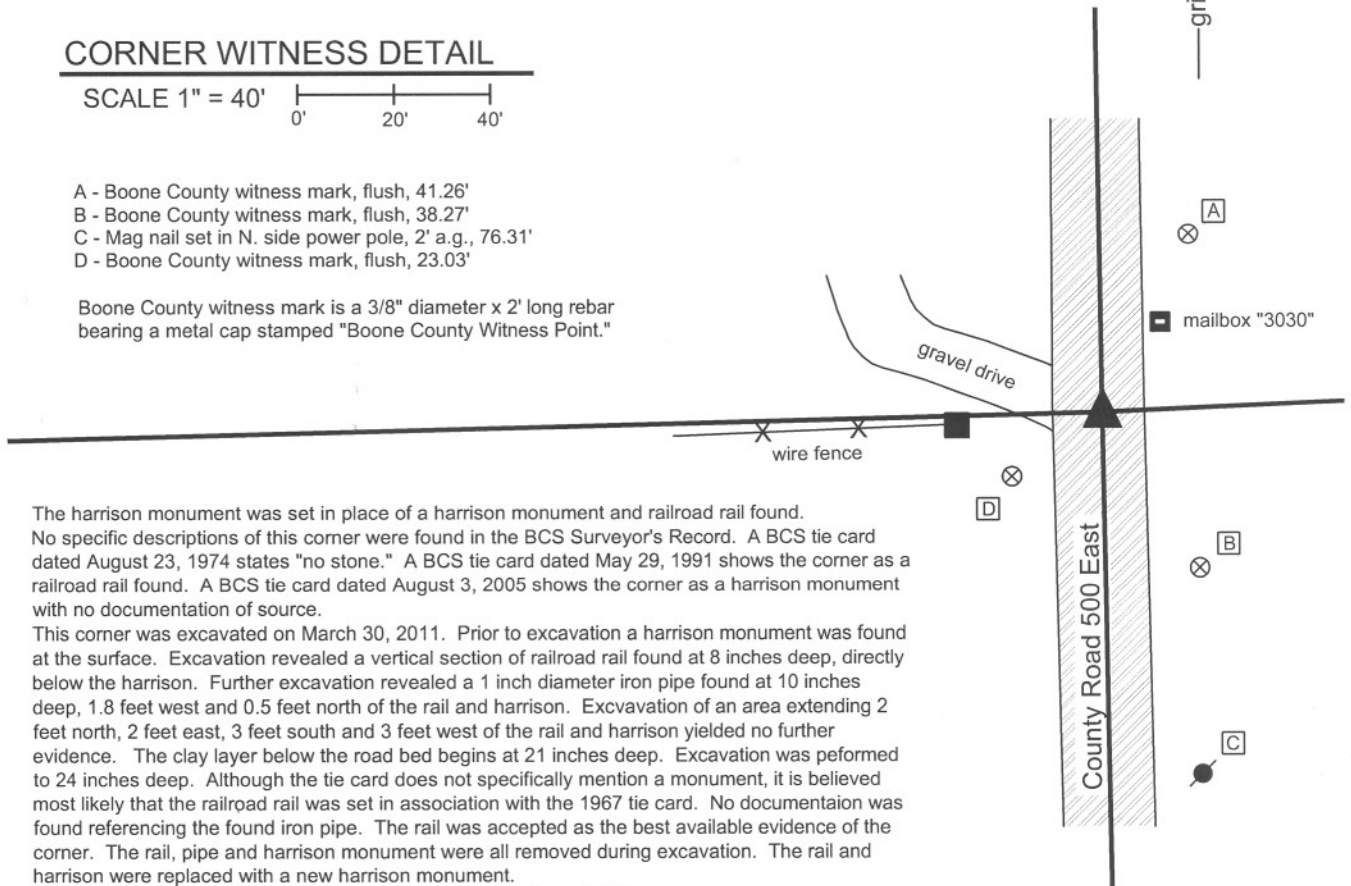
IN02_T19NR1E23_08

CORNER WITNESS DETAIL

SCALE 1" = 40' 

- A - Boone County witness mark, flush, 41.26'
- B - Boone County witness mark, flush, 38.27'
- C - Mag nail set in N. side power pole, 2' a.g., 76.31'
- D - Boone County witness mark, flush, 23.03'

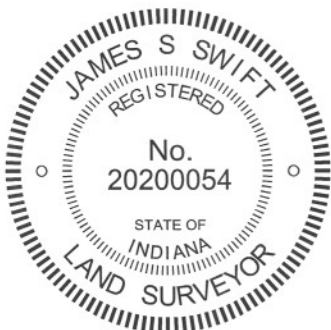
Boone County witness mark is a 3/8" diameter x 2' long rebar bearing a metal cap stamped "Boone County Witness Point."



The harrison monument was set in place of a harrison monument and railroad rail found. No specific descriptions of this corner were found in the BCS Surveyor's Record. A BCS tie card dated August 23, 1974 states "no stone." A BCS tie card dated May 29, 1991 shows the corner as a railroad rail found. A BCS tie card dated August 3, 2005 shows the corner as a harrison monument with no documentation of source.

This corner was excavated on March 30, 2011. Prior to excavation a harrison monument was found at the surface. Excavation revealed a vertical section of railroad rail found at 8 inches deep, directly below the harrison. Further excavation revealed a 1 inch diameter iron pipe found at 10 inches deep, 1.8 feet west and 0.5 feet north of the rail and harrison. Excavation of an area extending 2 feet north, 2 feet east, 3 feet south and 3 feet west of the rail and harrison yielded no further evidence. The clay layer below the road bed begins at 21 inches deep. Excavation was performed to 24 inches deep. Although the tie card does not specifically mention a monument, it is believed most likely that the railroad rail was set in association with the 1967 tie card. No documentation was found referencing the found iron pipe. The rail was accepted as the best available evidence of the corner. The rail, pipe and harrison monument were all removed during excavation. The rail and harrison were replaced with a new harrison monument.

This corner was originally established as a wood post in June, 1822.



Kenneth E. Hedge
 Kenneth E. Hedge, County Surveyor

James S. Swift
 James S. Swift, IN LS 20200054
 March 1, 2012

Center Township

Section 14 T19N, R1E	Section 13 T19N, R1E
Section 23 T19N, R1E	Section 24 T19N, R1E