

# SECTION CORNER RECORD

SW 300-700

## BOONE COUNTY SURVEYOR'S OFFICE

State Plane grid coordinates NAD83 (2011):

North: 1729468.34 East: 3087937.76 (U.S. survey feet)

Type of monument: Harrison, 4" disk 'Section Corner'

Depth: One inch below adjacent road surface

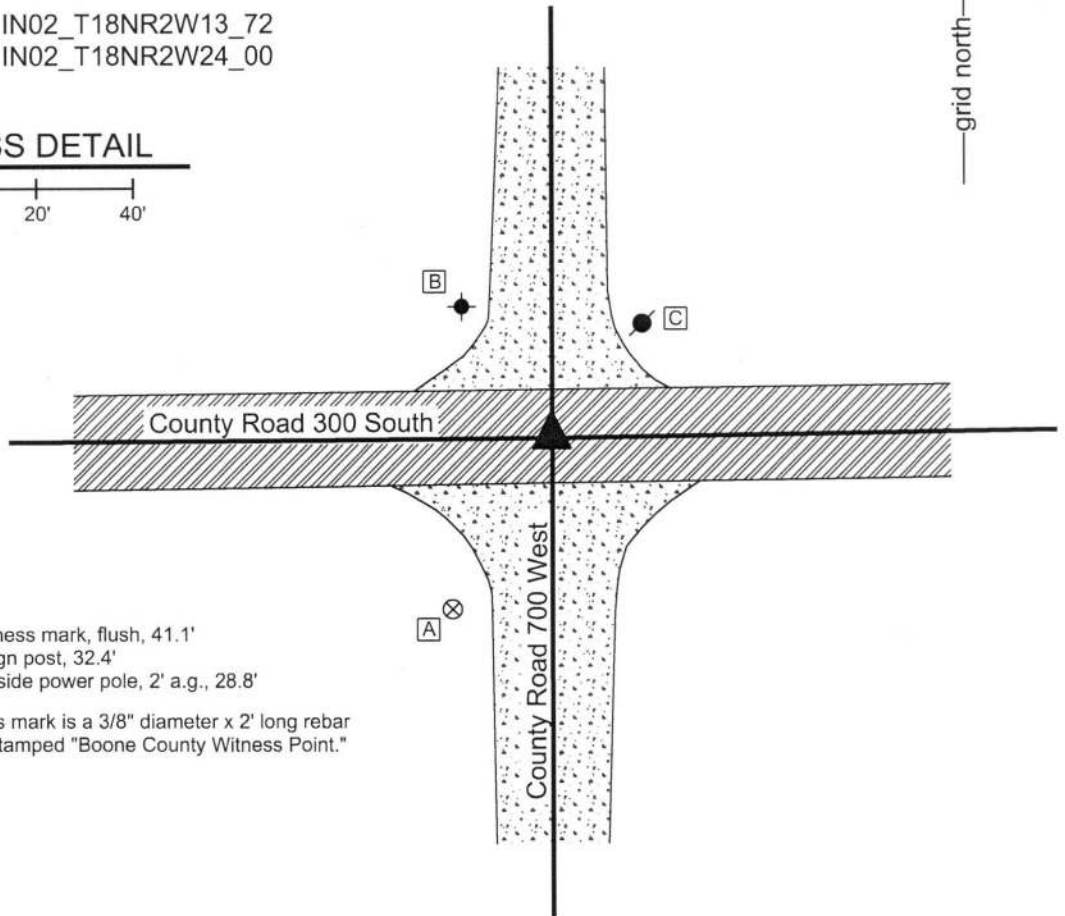
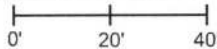
Indiana tie card references:

IN02\_T18NR2W14\_80 IN02\_T18NR2W13\_72

IN02\_T18NR2W23\_08 IN02\_T18NR2W24\_00

### CORNER WITNESS DETAIL

SCALE 1" = 40'



- A - Boone County witness mark, flush, 41.1'
- B - East edge, stop sign post, 32.4'
- C - Mag nail set in S. side power pole, 2' a.g., 28.8'

Boone County witness mark is a 3/8" diameter x 2' long rebar bearing a metal cap stamped "Boone County Witness Point."

The Harrison monument was set in place of a railroad rail found.

No specific descriptions of this corner were found in the BCS Surveyor's Record beyond the original establishment of the corner as a wood post in 1820. A BCS tie card dated August 24, 1967 shows the corner as "no stone."

This corner was excavated on June 13, 2018. Prior to excavation, a railroad spike was found at the surface of the road in the center of the intersection. Excavation revealed a vertical section of railroad rail found at 6 inches deep, below the railroad spike. Though the 1967 tie card does not specifically mention the rail, it is considered most likely that the rail was set in association with the creation of that document. Further excavation of an area extending 2.5 feet in all cardinal directions from the railroad spike and rail revealed no further evidence of the corner. The clay layer below the road bed was found at 15 inches deep. Excavation was performed to approximately 19 inches deep. The position of the top of the railroad rail was held as marking the corner. The rail was removed and replaced with a Harrison monument.



*Kenneth E. Hedge*  
Kenneth E. Hedge, County Surveyor

*James S. Swift*  
James S. Swift, IN LS 20200054  
June 27, 2018

Jackson Township

Section 14 T18N, R2W	Section 13 T18N, R2W
Section 23 T18N, R2W	Section 24 T18N, R2W

# SECTION CORNER RECORD

## BOONE COUNTY SURVEYOR'S OFFICE

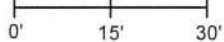
SW 300-750

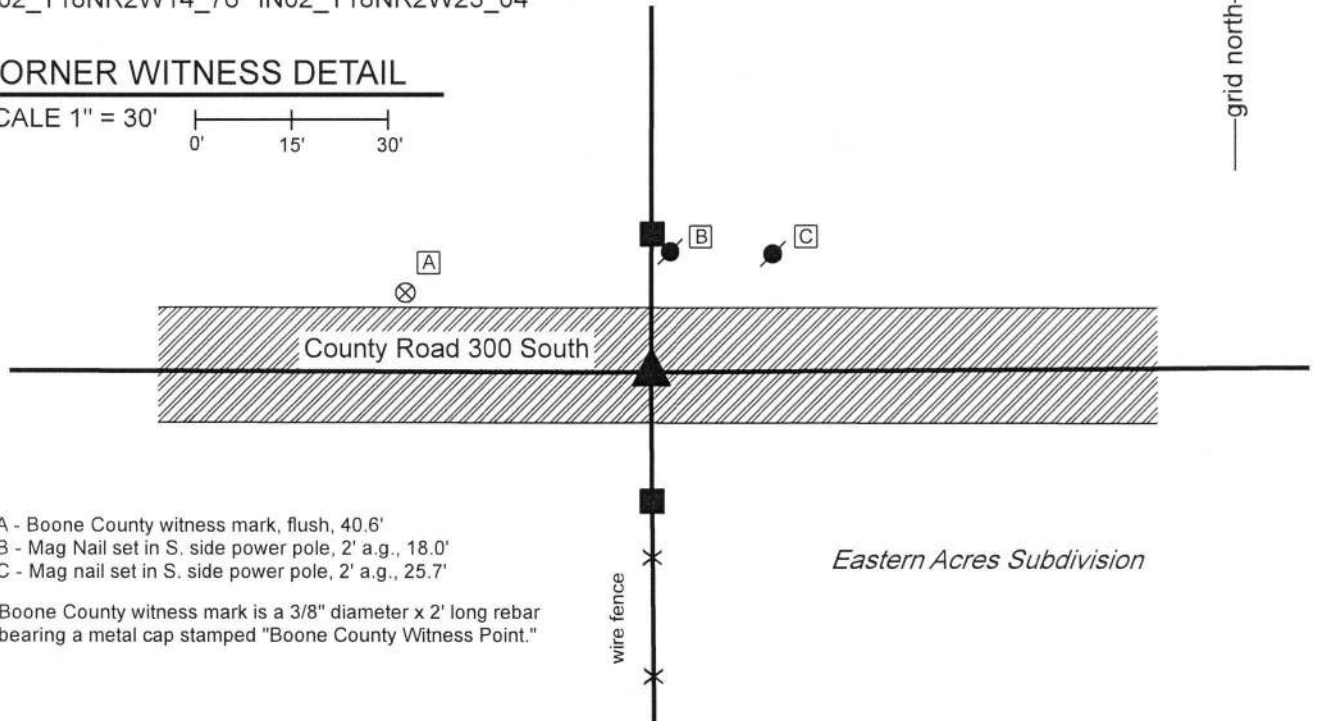
State Plane grid coordinates NAD83 (2011):  
 North: 1729451.11 East: 3085250.22 (U.S. survey feet)

Type of monument: Harrison, 4" disk 'Section Corner'  
 Depth: One inch below adjacent road surface

Indiana tie card references:  
 IN02\_T18NR2W14\_76 IN02\_T18NR2W23\_04

### CORNER WITNESS DETAIL

SCALE 1" = 30'  




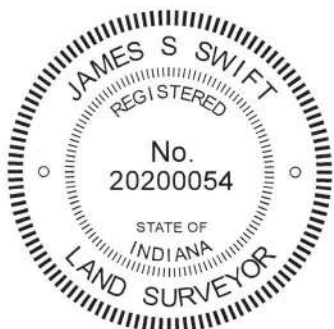
- A - Boone County witness mark, flush, 40.6'
- B - Mag Nail set in S. side power pole, 2' a.g., 18.0'
- C - Mag nail set in S. side power pole, 2' a.g., 25.7'

Boone County witness mark is a 3/8" diameter x 2' long rebar bearing a metal cap stamped "Boone County Witness Point."


The Harrison monument was set over a stone found and in place of a Mag Nail and a railroad spike found. A BCS record of June 20, 1870 states, with respect to this corner, "Reestablished from sycamore. Set Rock 6 1/2.5.5." No recent BCS tie cards were found referencing the corner. The plat of Eastern Acres, recorded in Plat Book 10, page 35 in the Office of the Boone County Recorder shows the corner as I.P. Found.

This corner was excavated on June 29, 2018. Prior to excavation, a Mag Nail was found in the center of the east-west road, in line with a fence to the south in a position which fit well with the position of the corner shown on the plat of Eastern Acres. Excavation revealed a railroad spike found at 3 inches deep, below the Mag Nail. Further excavation revealed a stone found at 22 inches deep, below the nail and spike. The stone was found embedded in the clay layer below the road bed, with the top of the stone at the bottom of the road bed. It measured 8 inches tall by 7 inches N-S by 9 inches E-W, similar to, but not exactly matching, the dimensions recited in the 1870 record. Probing around and below the stone indicated that no other stone or hard surfaced object was located below the stone. No specific marks were found on the stone. The top, center of the stone was found to be approximately 0.2 foot west of the Mag Nail and railroad spike found at or near the surface of the road. Though the stone did not exactly match the dimensions of the monument called for in the 1870 record, it did fit well with local evidence of the corner in the form of the fence to the south, a post on the north side of the road and the center of the E-W road. The stone was accepted as providing the best available evidence of the corner. The Mag Nail and railroad spike had been situated over the top of the stone, though not over the top, center of the stone. The position of the Mag Nail and railroad spike, removed during excavation, were held as the specific location of the corner and a Harrison monument was set in the same position of these monuments, over the stone, 0.2 feet east of the top, center of the stone.

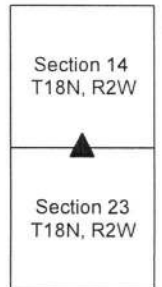
This corner was originally established as a wood post in 1820.



  
 Kenneth E. Hedge, County Surveyor

  
 James S. Swift, IN LS 20200054  
 July 25, 2018

Jackson Township



# SECTION CORNER RECORD

## BOONE COUNTY SURVEYOR'S OFFICE

SW 350-800

State Plane grid coordinates NAD83 (2011):  
 North: 1726814.07 East: 3082611.32 (U.S. survey feet)

Type of monument: INDOT Type B Monument  
 Depth: Flush with adjacent road surface

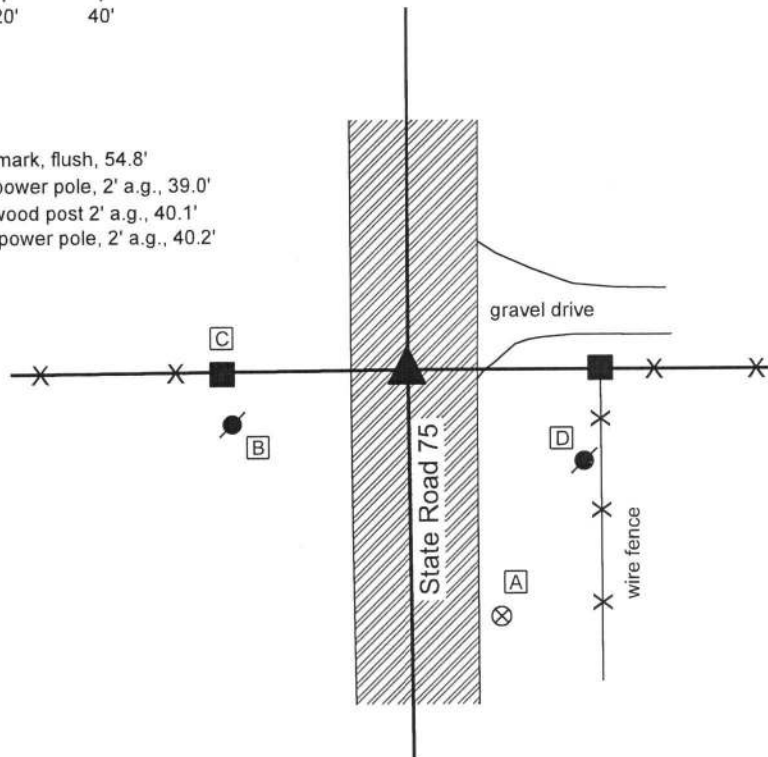
Indiana tie card references:  
 IN02\_T18NR2W22\_44 IN02\_T18NR2W23\_36

### CORNER WITNESS DETAIL

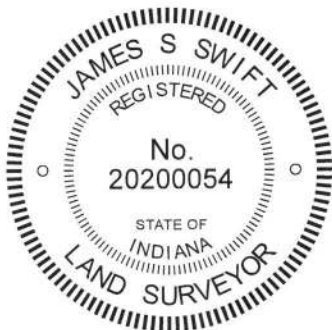
SCALE 1" = 40'



- A - Boone County witness mark, flush, 54.8'
- B - Mag nail set in E. side power pole, 2' a.g., 39.0'
- C - Mag nail set in E. side wood post 2' a.g., 40.1'
- D - Mag nail set in W. side power pole, 2' a.g., 40.2'



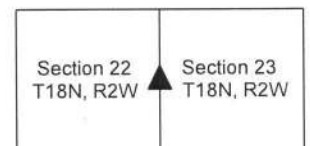
The INDOT Type B monument was found in place.  
 A BCS tie card dated December, 2003 shows the corner to be a 1 inch square rod, 8 inches deep in the center of S.R. 75, in line with fences to the east and west. In 2004 or later, INDOT replaced the rod with a Type B monument in the same position. The origin of the square rod is not known and excavation was not performed at this corner, being in a state highway. The position of the monument fits with local evidence, being in the center of the roadway and generally in-line with the fences to the east and west. The Type B monument is held as marking the corner.  
 This corner was originally established as a wood post in 1820.



*Kenneth E. Hedge*  
 Kenneth E. Hedge, County Surveyor

*James S. Swift*  
 James S. Swift, IN LS 20200054  
 March 13, 2019

Jackson Township



# SECTION CORNER RECORD

## BOONE COUNTY SURVEYOR'S OFFICE

SW 400-700

State Plane grid coordinates NAD83 (2011):

North: 1724182.17 East: 3087949.56 (U.S. survey feet)

Type of monument: Harrison, 4" disk 'Section Corner'

Depth: Six inches below adjacent gravel road surface

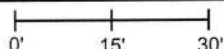
Indiana tie card references:

IN02\_T18NR2W23\_80 IN02\_T18NR2W24\_72

IN02\_T18NR2W26\_08 IN02\_T18NR2W25\_00

### CORNER WITNESS DETAIL

SCALE 1" = 30'



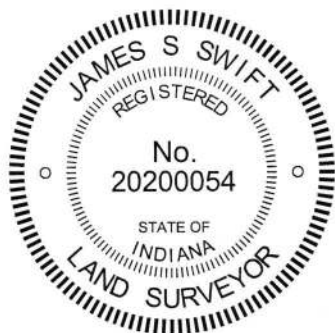
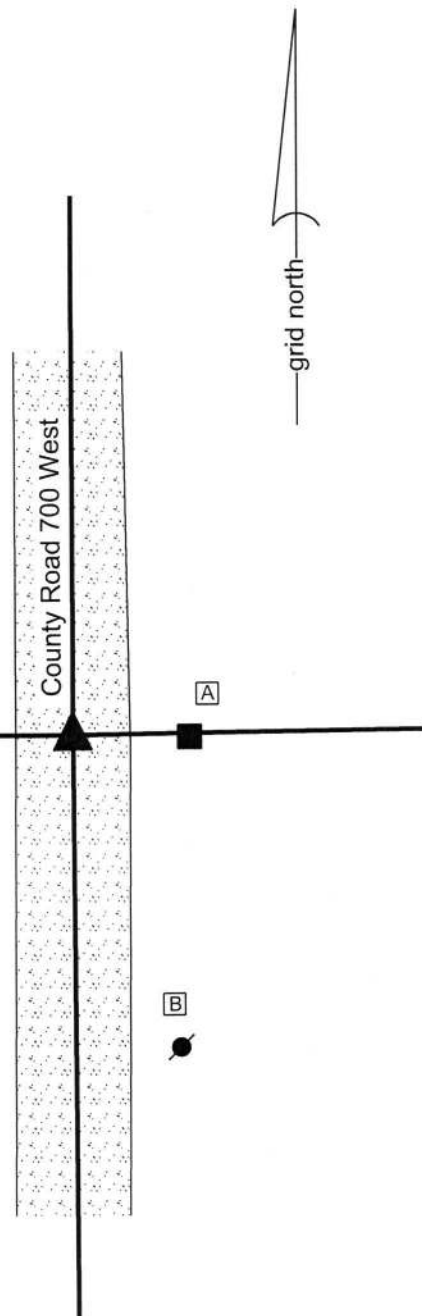
- A - Mag nail set in W. side wood post, 1' a.g., 16.6'
- B - Mag nail set in W. side power pole, 2' a.g., 50.8'
- C - Boone County witness mark, flush, 37.1'

Boone County witness mark is a 3/8" diameter x 2' long rebar bearing a metal cap stamped "Boone County Witness Point."

The Harrison monument was set in place of a vertical section of railroad rail found. A BCS record of August 16-18, 1858 states, with respect to this corner, "reest. from old witness trees. Set a rock 17, 24." A BCS tie card of March 20, 1969 shows the corner and states "no stone."

This corner was excavated on December 18, 2017. Prior to excavation, a vertical section of railroad rail was found at 4 inches deep in the gravel road opposite a wood end post on the east side of the road. Although the 1969 tie card does not mention the rail, it is considered most likely that the rail was set in association with the creation of that document. It is known to have been a common practice of BCS field crews from that era to set vertical sections of railroad rail but to not specifically state that fact on the associated documentation sheets. Excavation of an area extending 3 feet north, 3 feet south, 4 feet east and 4 feet west of the rail revealed no further evidence of the corner. The area was excavated to 16 inches deep, approximately 2 inches into the clay layer below the road bed. It is noted that the base material of the road bed was sufficiently substantial in size to indicate that the immediate vicinity of the corner was likely subject to standing in water when the road bed was established. The presence of an open ditch immediately to the north of and at similar elevation to the corner corroborates this supposition of previously standing water. It has been observed at other corners throughout the county that evidence of the previous presence of standing water yields a situation where ancient evidence such as a stone monument is not found.

The vertical section of rail fit with the local evidence of the corner in the form of the north-south roadway and the post on the east side of the road. The rail also fits reasonably well with the relative positions of proximate corners. The rail was held as marking the corner. The rail was removed and replaced with a Harrison monument in the same position. This corner was originally established as a wood post in 1820.



*Kenneth E. Hedge*  
 Kenneth E. Hedge, County Surveyor

*James S. Swift*  
 James S. Swift, IN LS 20200054  
 January 31, 2018

Jackson Township

Section 23 T18N, R2W	Section 24 T18N, R2W
Section 26 T18N, R2W	Section 25 T18N, R2W

# SECTION CORNER RECORD

## BOONE COUNTY SURVEYOR'S OFFICE

SW 400-800

State Plane grid coordinates NAD83 (2011):  
 North: 1724169.54 East: 3082642.75 (U.S. survey feet)

Type of monument: INDOT Type B monument  
 Depth: flush with adjacent road surface

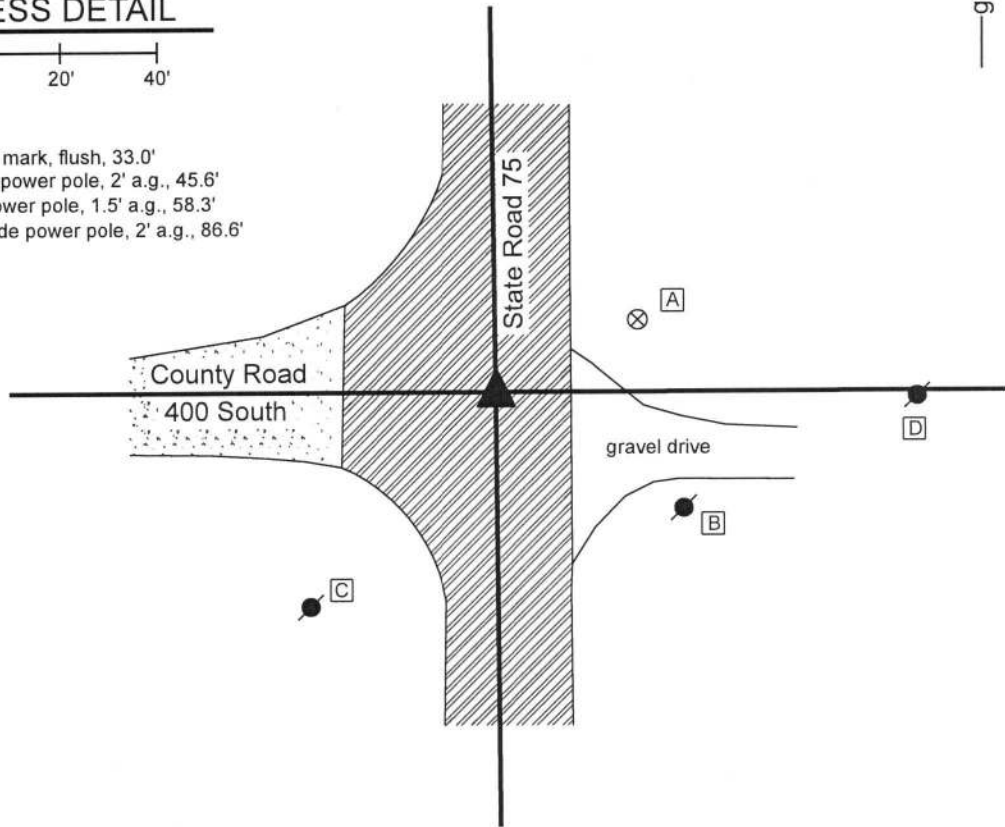
Indiana tie card references:  
 IN02\_T18NR2W22\_80 IN02\_T18NR2W23\_72  
 IN02\_T18NR2W27\_08 IN02\_T18NR2W26\_00



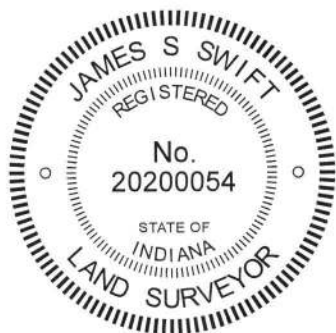
### CORNER WITNESS DETAIL

SCALE 1" = 40'

- A - Boone County witness mark, flush, 33.0'
- B - Mag nail set in N. side power pole, 2' a.g., 45.6'
- C - Nail fnd in N.E. side power pole, 1.5' a.g., 58.3'
- D - Mag nail set in S.W. side power pole, 2' a.g., 86.6'



The INDOT Type B monument was found in place.  
 A BCS tie card dated December, 2003 shows the corner to be a PK nail found in patch. In 2004 or later, INDOT replaced the nail with a Type B monument in the same position. Though the origin of the position of the monument is not known, it fits with local evidence in the form of the intersection of the existing roadways. This corner was not excavated, being in a state highway. The Type B monument is held as marking the corner.  
 This corner was originally established as a wood post in 1820.



*Kenneth E. Hedge*  
 Kenneth E. Hedge, County Surveyor

*James S. Swift*  
 James S. Swift, IN LS 20200054  
 March 13, 2019

Jackson Township

Section 22 T18N, R2W	Section 23 T18N, R2W
Section 27 T18N, R2W	Section 26 T18N, R2W