

SECTION CORNER RECORD

SW 300-100

BOONE COUNTY SURVEYOR'S OFFICE

State Plane grid coordinates NAD83 (2011):

North: 1729602.68 East: 3119571.82 (U.S. survey feet)

Type of monument: Harrison, 4" disk 'Section Corner'

Depth: One inch below adjacent road surface

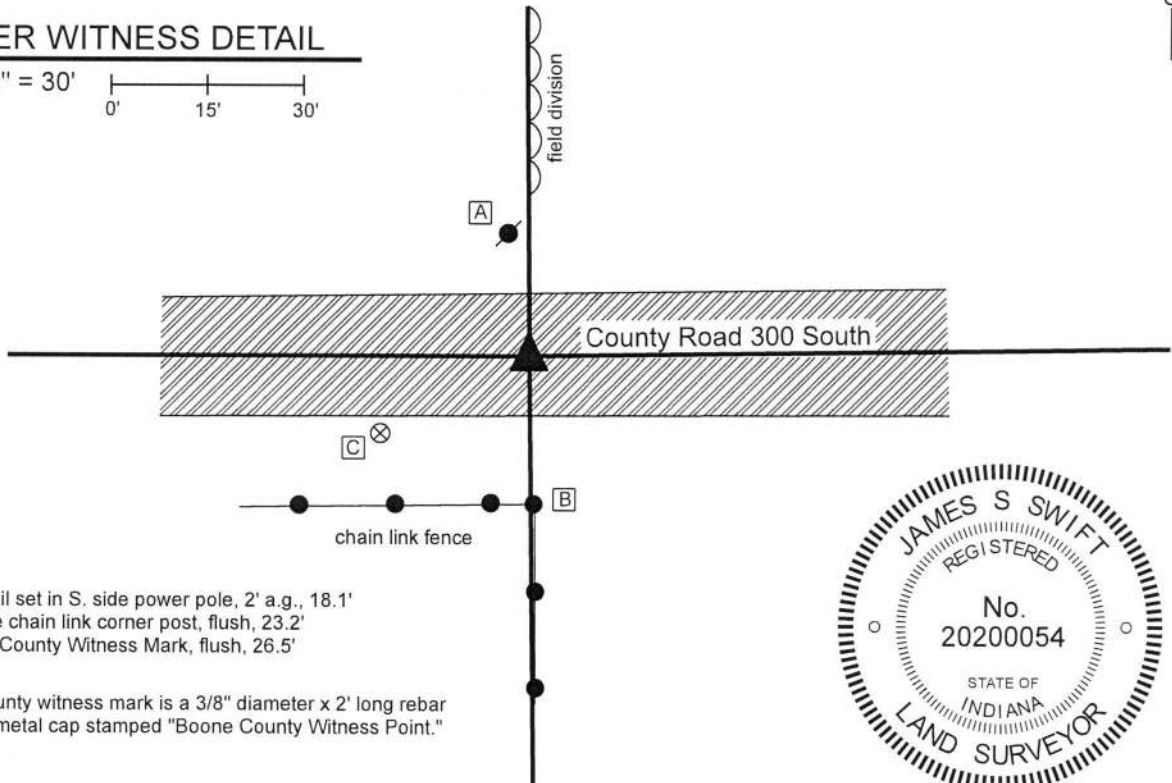
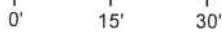
Indiana tie card references:

IN02_T18NR1W14_80 IN02_T18NR1W13_72

IN02_T18NR1W23_08 IN02_T18NR1W24_00

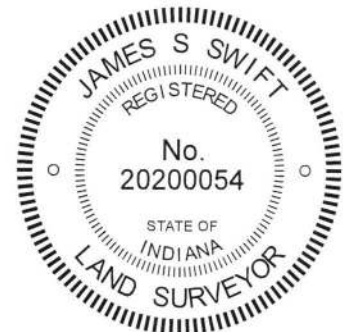
CORNER WITNESS DETAIL

SCALE 1" = 30'



- A - Mag nail set in S. side power pole, 2' a.g., 18.1'
- B - S. edge chain link corner post, flush, 23.2'
- C - Boone County Witness Mark, flush, 26.5'

Boone County witness mark is a 3/8" diameter x 2' long rebar bearing a metal cap stamped "Boone County Witness Point."



The Harrison monument was set over a vertical section of railroad rail found.

No specific descriptions of this corner were found in the BCS Surveyor's record beyond the original establishment of the corner as a wood post in 1820. The corner is referenced, but not described, in a record of June 18, 1861, indicating that some object was present from which to measure at that time. A BCS tie card dated July 24, 1967 shows the corner as stone located.

Minor excavation was performed at this corner on on June 29, 2018. Prior to excavation, a Mag nail was found at the surface. Excavation revealed a vertical section of railroad rail at 9 inches deep, approximately below the mag nail. Although the rail is not specifically mentioned in the 1967 record, it is known that the practice of BCS field crews in that era was to remove a stone, if found, and replace it with a railroad rail. No stone or other evidence was found near the rail during excavation. It is believed that the stone was removed and replaced with the rail in 1967. The rail fits with evidence of occupation to the north and south. The rail was accepted as marking the corner. The rail was left in place, two sections of 3/8" diameter rebar were driven on the sides of the rail, and a Harrison monument was set directly over the top of the rail.

Kenneth E. Hedge
 Kenneth E. Hedge, County Surveyor

James S. Swift
 James S. Swift, IN LS 20200054
 July 25, 2018

Center Township

Section 14 T18N, R1W	Section 13 T18N, R1W
-------------------------	-------------------------

Harrison Township

Section 23 T18N, R1W	Section 24 T18N, R1W
-------------------------	-------------------------



SECTION CORNER RECORD

SW 300-200

BOONE COUNTY SURVEYOR'S OFFICE

State Plane grid coordinates NAD83 (2011):

North: 1729601.45 East: 3114284.62 (U.S. survey feet)

Type of monument: 5/8" Rebar with metal cap (see notes)

Depth: Four inches above adjoining ground

Indiana tie card references:

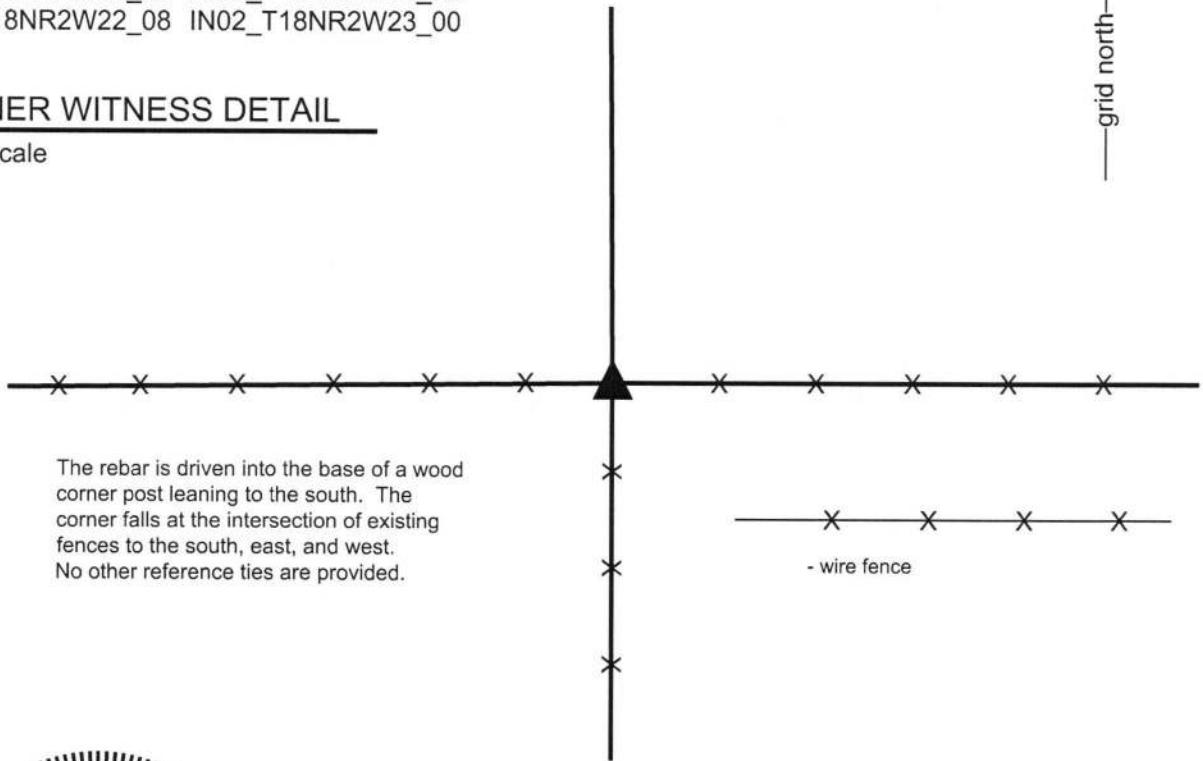
IN02_T18NR2W15_80 IN02_T18NR2W14_72

IN02_T18NR2W22_08 IN02_T18NR2W23_00



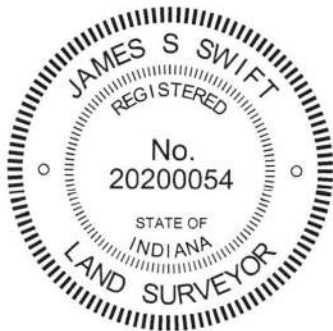
CORNER WITNESS DETAIL

Not to scale



The rebar is driven into the base of a wood corner post leaning to the south. The corner falls at the intersection of existing fences to the south, east, and west. No other reference ties are provided.

- wire fence



The rebar was driven into the subterranean base of a wood corner post.

No specific descriptions of this corner were found in the BCS Surveyor's Record nor were any recent BCS tie cards found referencing this corner.

Substantial local evidence of the corner exists in the form of a wood corner post at the intersection of old, well established fences to the south, east and west. The position of the post works well with respect to proximate corners. Manual excavation around the base of the post on October 18, 2016 yielded neither stone nor other evidence of the corner found. The post was accepted as providing the best available evidence of the corner and was held as marking the corner. The post leans to the south. A 30 inch length of 5/8 inch diameter rebar was driven vertically at the approximate position of the base of the post. The rebar was driven into the base of the post below ground. Above ground, the top of the rebar and the metal cap appear to be at the north edge of the leaning post. As the rebar is intended to occupy the same position of the base of the post, the rebar is held as marking the specific location of the corner.

This corner was established as a wood post in 1820.


Kenneth E. Hedge, County Surveyor


James S. Swift, IN LS 20200054

March 23, 2017

Jefferson Township

Section 15 T18N, R2W	Section 14 T18N, R2W
Section 22 T18N, R2W	Section 23 T18N, R2W

Jackson Township

SECTION CORNER RECORD

SW-400-100

BOONE COUNTY SURVEYOR'S OFFICE

State Plane grid coordinates NAD83 (2011):
North: 1724326.48 East: 3119633.20 (U.S. survey feet)

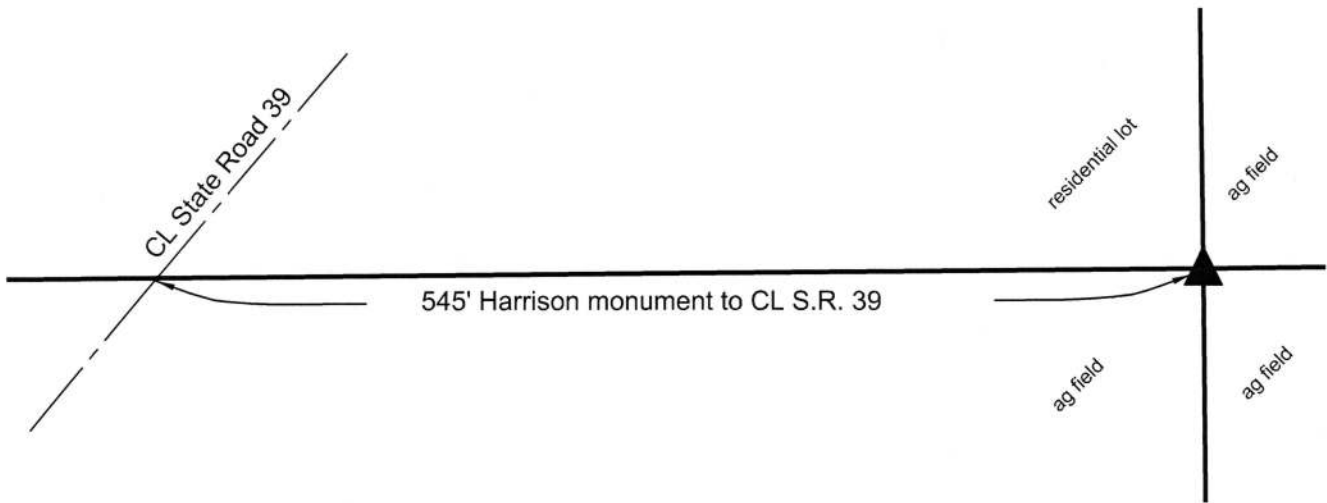
Type of monument: Harrison, 4" disk 'Section Corner'
Depth: One inch above adjacent ground

Indiana tie card references:
IN02_T18NR1W23_80 IN02_T18NR1W24_72
IN02_T18NR1W25_08 IN02_T18NR1W25_00



CORNER WITNESS DETAIL

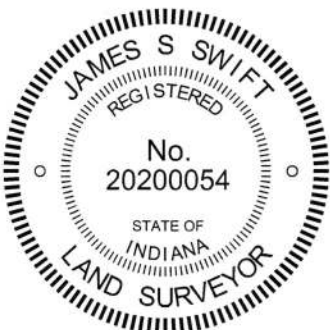
SCALE 1" = 100'



The Harrison monument was set in place of a collection of numerous small rocks found below grade. A BCS record dated October 12-16, 1857 states, with respect to this corner, "Reestablished. Rock 15x20." No recent BCS tie cards were found referencing this corner.

This office assisted Deckard Engineering/Surveying with section corner perpetuation in this vicinity during November, 2015. The corner 1/2 mile south of the subject corner (SW 150-400) was excavated and monumented by this office at that time. The subject corner was excavated by Deckard in the same time period. Calculating the position relative to proximate corners and relevant deed descriptions and evidence, the Deckard crew found substantial evidence of the corner in the form of a grouping of numerous small rocks and held the position of the corner. That position for the corner was confirmed by this office. The position of the corner held by Deckard works well with proximate corners and local evidence in the form of the east-west field division and remnants of fence to the east and west as well as evidence of occupation and remnants of fence to the north. A Harrison monument was set at that position on October 13, 2016. The Deckard survey is recorded as Instrument 201600002449 in the Office of the Boone County Recorder.

This corner was originally established as a wood post in June, 1820.



Kenneth E. Hedge, County Surveyor

James S. Swift, IN LS 20200054
March 23, 2017

Harrison Township

Section 23 T18, R1W	Section 24 T18N, R1W
Section 26 T18N, R1W	Section 25 T18N, R1W