

# SECTION CORNER RECORD

SE 300-400

## BOONE COUNTY SURVEYOR'S OFFICE

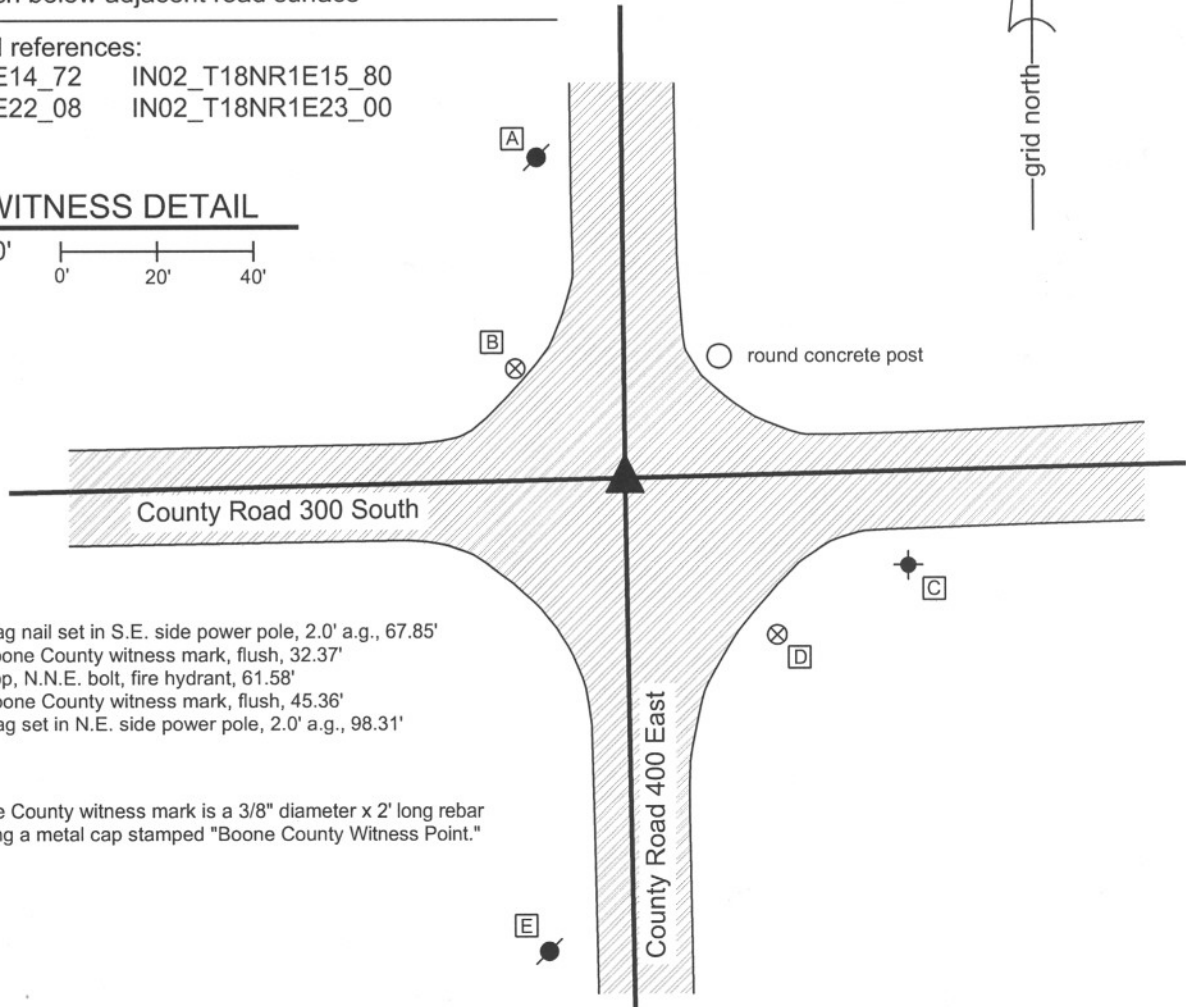
State Plane grid coordinates NAD83 (NSRS 2007):  
 North: 1730242.88 East: 3145898.82 (U.S. survey feet)

Type of monument: Harrison, 4" disk 'Section Corner'  
 Depth: One inch below adjacent road surface

Indiana tie card references:  
 IN02\_T18NR1E14\_72 IN02\_T18NR1E15\_80  
 IN02\_T18NR1E22\_08 IN02\_T18NR1E23\_00

### CORNER WITNESS DETAIL

SCALE 1" = 40'



- A - Mag nail set in S.E. side power pole, 2.0' a.g., 67.85'
- B - Boone County witness mark, flush, 32.37'
- C - Top, N.N.E. bolt, fire hydrant, 61.58'
- D - Boone County witness mark, flush, 45.36'
- E - Mag set in N.E. side power pole, 2.0' a.g., 98.31'

Boone County witness mark is a 3/8" diameter x 2' long rebar bearing a metal cap stamped "Boone County Witness Point."

The harrison monument was set over a stone found.

A BCS record of October 29, 1873 states "Reestablished from stump of Red Oak. Set Two Rocks. One 8,5 1/2,4. Top one 11,9,5 1/2 +." A BCS tie card with no date states "No stone. Set temporary 1 1/4" pipe." A BCS tie card dated October 25, 2005 shows the corner as a harrison monument with no documentation about the source. This corner was excavated on June 18, 2008. Prior to excavation, a harrison monument was visible at the surface. Excavation revealed a railroad rail below the harrison at 12 inches deep. A second railroad rail was found at 10 inches deep 1.0 foot North and 0.5 feet E of the first rail. No explanation is offered as to why two railroad rails were present at the intersection. The record stone was found at 23 inches deep. The stone measures 9 inches E-W by 5 1/2 inches N-S by 11 inches tall. The etched "+" is clearly visible on the south side of the sloping top of the stone. Refer to the attached sheet for photographic documentation of the rails and record stone. The new harrison was set over the top of the stone. The previously existing harrison and both rails were removed during excavation. The previous harrison had been 2.4 feet south and 1.8 feet east of the record stone.



*Kenneth E. Hedge*  
 Kenneth E. Hedge, County Surveyor

*James S. Swift*  
 James S. Swift, IN LS 20200054

March 11, 2009

Center Township

Perry Township

Worth Twp

|                         |                         |
|-------------------------|-------------------------|
| Section 15<br>T18N, R1E | Section 14<br>T18N, R1E |
| Section 22<br>T18N, R1E | Section 23<br>T18N, R1E |

PHOTOGRAPHIC DOCUMENTATION

Date of photography: June 18, 2008

Two railroad rails found approximately 1.3 feet apart. See other sheet for information.



Corner stone - overhead view from South.



Corner stone. Close up view.



View from the South looking North across the stone and along County Road 400 East.



View from the West looking East across the stone and along County Road 300 South.



For details and documentation, refer to related sheet "Section Corner Record."

# SECTION CORNER RECORD

SE 300-450

## BOONE COUNTY SURVEYOR'S OFFICE

State Plane grid coordinates NAD83 (NSRS 2007):

North: 1730306.65 East: 3148558.53 (U.S. survey feet)

Type of monument: Harrison, 4" disk 'Section Corner'

Depth: One inch below adjacent road surface

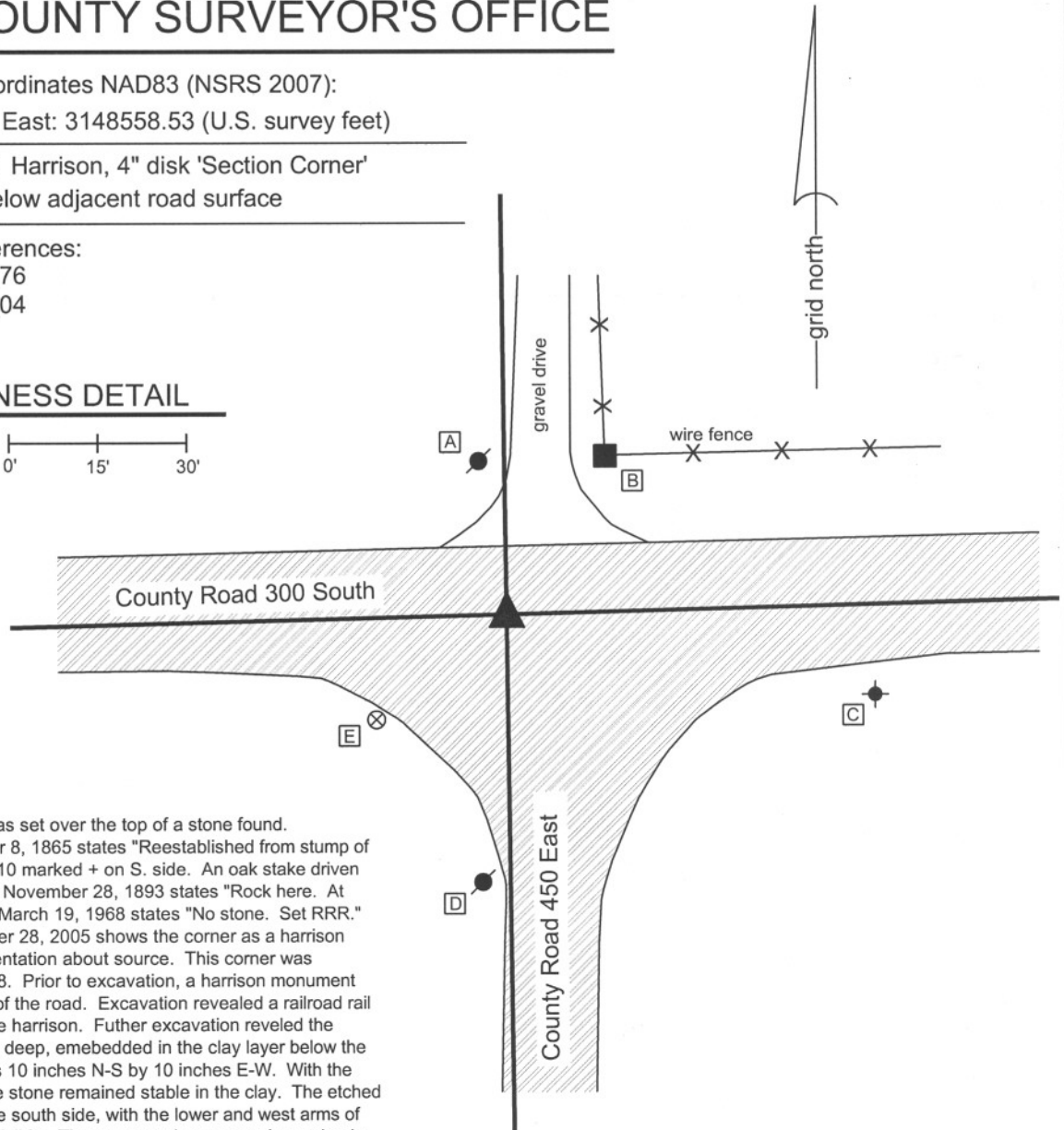
Indiana tie card references:

IN02\_T18NR1E14\_76

IN02\_T18NR1E23\_04

### CORNER WITNESS DETAIL

SCALE 1" = 30'



The harrison monument was set over the top of a stone found. A BCS record of December 8, 1865 states "Reestablished from stump of one tree. Set Rock 15,10,10 marked + on S. side. An oak stake driven under it." A BCS record of November 28, 1893 states "Rock here. At corner" A BCS tie card of March 19, 1968 states "No stone. Set RRR." A BCS tie card of November 28, 2005 shows the corner as a harrison monument with no documentation about source. This corner was excavated on July 17, 2008. Prior to excavation, a harrison monument was visible at the surface of the road. Excavation revealed a railroad rail at 7 inches deep, below the harrison. Further excavation revealed the record stone at 12 inches deep, embedded in the clay layer below the road. The stone measures 10 inches N-S by 10 inches E-W. With the top 10 inches exposed, the stone remained stable in the clay. The etched "+" is partially visible on the south side, with the lower and west arms of the "+" being distinct and visible. The upper and east arms have clearly been broken off along with a segment of the top of the stone. The 1968 tie card is erroneous in the statement of "no stone." The stone was held as marking the best evidence of the original location of the corner and the harrison monument was set over the top of the stone, directly north of the etched "+." The old harrison and rail, both removed during excavation, had been 1.4 feet East and 0.9 foot north of the top of the stone. This corner was originally established as a wood post in June, 1820.

- A - Mag nail set in S. side power pole, 2.0' a.g., 25.00'
- B - Mag nail set in S. side, wood corner post, 2.0' a.g., 31.64'
- C - Top, N.N.E. bolt, fire hydrant, 64.00'
- D - Mag nail set in N. side, power pole, 2.0' a.g., 44.12'
- E - Boone County witness mark, flush, 28.50'

Boone County witness mark is a 3/8" diameter x 2' long rebar bearing a metal cap stamped "Boone County Witness Point."

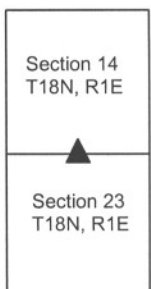


*Kenneth E. Hedge*  
 Kenneth E. Hedge, County Surveyor

*James S. Swift*  
 James S. Swift, IN LS 20200054

March 11, 2009

Worth Township



PHOTOGRAPHIC DOCUMENTATION

Date of photography: July 17, 2008

View from West, looking East across the stone and along County Road 300 South.



Corner stone - overhead view from South.



Close-up from South. The bottom and left arms of the etched "+" are visible. Above this the stone appears to be broken.



Same view as to the left, with the visible portions of the etched "+" enhanced for ease of visual detection.



Corner stone - overhead view from West.



Corner stone - overhead view from North.



For details and documentation, refer to related sheet "Section Corner Record."

# SECTION CORNER RECORD

SE 300-500

## BOONE COUNTY SURVEYOR'S OFFICE

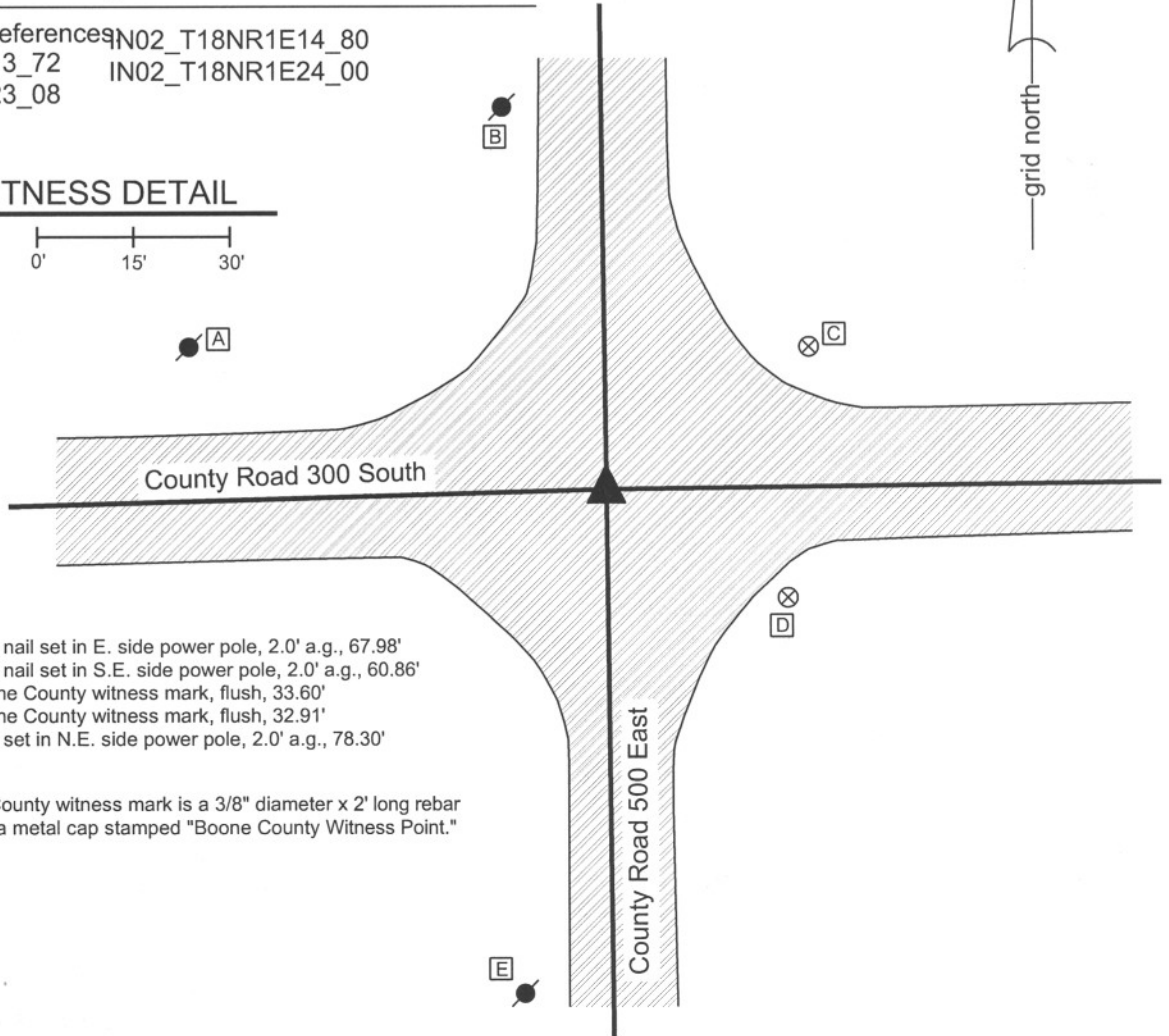
State Plane grid coordinates NAD83 (NSRS 2007):  
North: 1730376.03 East: 3151207.38 (U.S. survey feet)

Type of monument: Harrison, 4" disk 'Section Corner'  
Depth: One inch below adjacent road surface

Indiana tie card references: IN02\_T18NR1E14\_80  
IN02\_T18NR1E13\_72 IN02\_T18NR1E24\_00  
IN02\_T18NR1E23\_08

### CORNER WITNESS DETAIL

SCALE 1" = 30'



- A - Mag nail set in E. side power pole, 2.0' a.g., 67.98'
- B - Mag nail set in S.E. side power pole, 2.0' a.g., 60.86'
- C - Boone County witness mark, flush, 33.60'
- D - Boone County witness mark, flush, 32.91'
- E - Mag set in N.E. side power pole, 2.0' a.g., 78.30'

Boone County witness mark is a 3/8" diameter x 2' long rebar bearing a metal cap stamped "Boone County Witness Point."

The harrison monument was set in place of a harrison monument found over a railroad rail. No old BCS stone records were found for this corner. A BCS tie card dated August 16, 1967 shows the corner but does not give any specific information about what was found or set. A BCS tie card dated November 28, 2005 shows the corner as a harrison monument with no documentation of source. This corner was excavated on June 16, 2008. Prior to excavation a harrison monument was visible at the surface at the approximate intersection of the two county roads. A railroad rail was found at 16 inches deep, directly below the harrison. Excavation of an area 5 feet N-S by 5 feet E-W centered on the previously existing harrison yielded no more monuments. A new harrison was set in the position of the old harrison and the railroad rail. This corner was originally established as a wood post in June, 1820.



*Kenneth E. Hedge*  
Kenneth E. Hedge, County Surveyor

*James S. Swift*  
James S. Swift, IN LS 20200054  
March 11, 2009

Worth Township

|                         |                         |
|-------------------------|-------------------------|
| Section 14<br>T18N, R1E | Section 13<br>T18N, R1E |
| Section 23<br>T18N, R1E | Section 24<br>T18N, R1E |

# SECTION CORNER RECORD

SE 350-400

## BOONE COUNTY SURVEYOR'S OFFICE

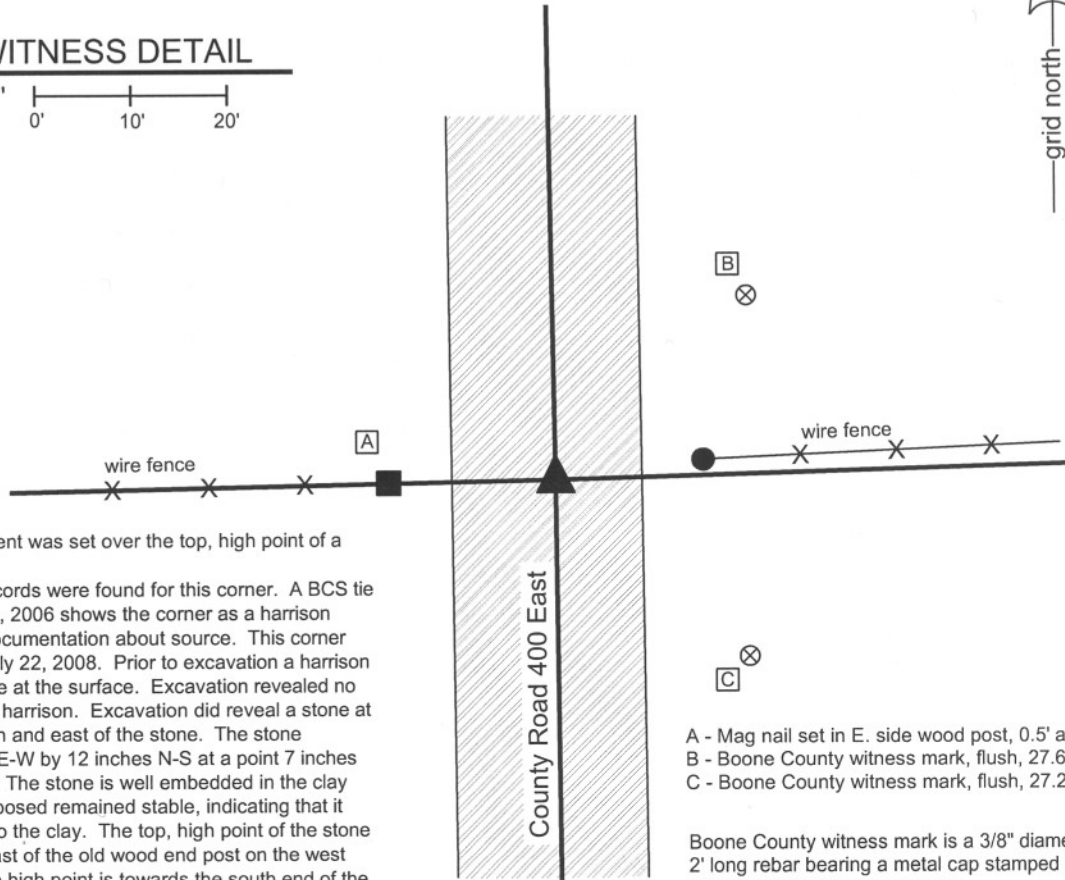
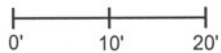
State Plane grid coordinates NAD83 (NSRS 2007):  
North: 1727576.78 East: 3145941.46 (U.S. survey feet)

Type of monument: Harrison, 4" disk 'Section Corner'  
Depth: One inch below adjacent road surface

Indiana tie card references:  
IN02\_T18NR1E22\_44  
IN02\_T18NR1E23\_36

### CORNER WITNESS DETAIL

SCALE 1" = 20'



The harrison monument was set over the top, high point of a stone found. No old BCS stone records were found for this corner. A BCS tie card dated January 2, 2006 shows the corner as a harrison monument with no documentation about source. This corner was excavated on July 22, 2008. Prior to excavation a harrison monument was visible at the surface. Excavation revealed no monument below the harrison. Excavation did reveal a stone at 12 inches deep, south and east of the stone. The stone measures 12 inches E-W by 12 inches N-S at a point 7 inches below the high point. The stone is well embedded in the clay and with 7 inches exposed remained stable, indicating that it penetrates further into the clay. The top, high point of the stone is 1 rod (16.5 feet) east of the old wood end post on the west side of the road. The high point is towards the south end of the stone. A harrison monument was set over the high point. The old harrison, removed during excavation, was 0.6 foot North and 0.8 foot West of the top, high point of the stone. This corner was originally established as a wood post in June, 1820.

- A - Mag nail set in E. side wood post, 0.5' a.g., 16.4'
- B - Boone County witness mark, flush, 27.62'
- C - Boone County witness mark, flush, 27.27'

Boone County witness mark is a 3/8" diameter x 2' long rebar bearing a metal cap stamped "Boone County Witness Point."



*Kenneth E. Hedge*  
Kenneth E. Hedge, County Surveyor

*James S. Swift*  
James S. Swift, IN LS 20200054  
March 11, 2009

Perry Twp Worth Twp

|                         |                         |
|-------------------------|-------------------------|
| Section 22<br>T18N, R1E | Section 23<br>T18N, R1E |
|-------------------------|-------------------------|

PHOTOGRAPHIC DOCUMENTATION

Date of photography: July 22, 2008

View from north looking south across the stone and along County Road 400 East to the south.



Corner stone.



View from east looking west across stone to wood post at east end of old fence.



View from west looking east to concrete post and fence line.



For details and documentation, refer to related sheet "Section Corner Record."

# SECTION CORNER RECORD

SE 350-500

## BOONE COUNTY SURVEYOR'S OFFICE

State Plane grid coordinates NAD83 (NSRS 2007):

North: 1727725.59 East: 3151237.13 (U.S. survey feet)

Type of monument: Harrison, 4" disk 'Section Corner'

Depth: One inch below adjacent road surface

Indiana tie card references:

IN02\_T18NR1E23\_44

IN02\_T18NR1E24\_36

### CORNER WITNESS DETAIL

SCALE 1" = 40'



- A - Mag nail set in E. side, wood post, 2.0' a.g., 16.67'
- B - Boone County witness mark, flush, 24.25'
- C - Mag nail set in N. side, wood post, 2.0' a.g., 17.25'
- D - Boone County witness mark, flush, 45.09'

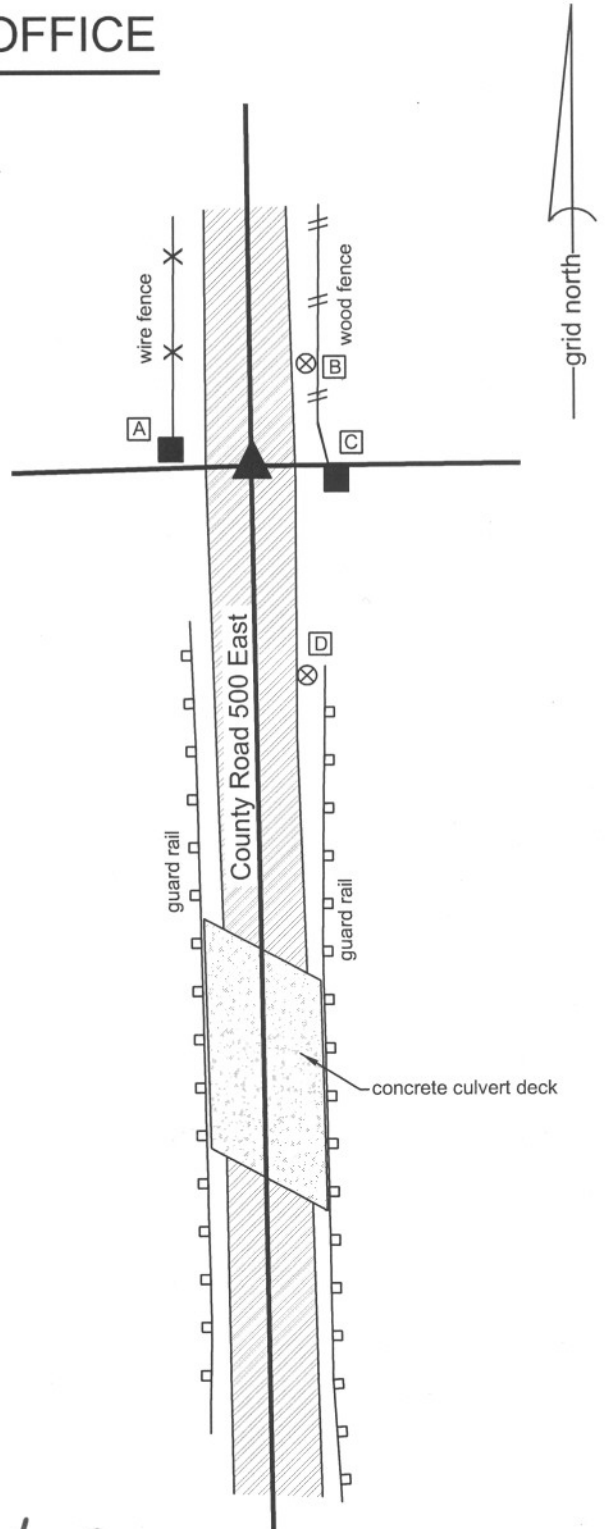
Boone County witness mark is a 3/8" diameter x 2' long rebar bearing a metal cap stamped "Boone County Witness Point."

A BCS record of June 17, 1872 states "re-established from stump of walnut, set a rock 16,14,8 marked +". This stone was found on March 31, 2008, 21 inches below grade. The top of the stone is 8 inches N-S by 14 inches E-W with a vague but visible "+" etched on the center of the top. The harrison monument was set directly over the etched "+" on the top of the stone. Refer to the attached sheet for photographic documentation.

A BCS tie card of October 6, 1969 shows the corner but does not specify the monument. The tie card states "no stone." Prior to excavation a harrison monument was visible at the surface, though disturbed. The origin of this harrison is not known and it was not established in sufficient concrete to maintain its stability. Excavation yielded a railroad rail, which was likely set in association with the creation of the 1969 tie card. The rail was leaning substantially towards the north with the top of the rail approximately 1.1 feet north of the bottom of the rail. The existing harrison had been over the top (north end) of the rail. The position resected from the 1969 ties was neither at the top nor bottom of the rail, but approximately in the middle and slightly to the east.

The harrison and rail were both removed during excavation. Further excavation yielded the stone called for in the 1872 record. The etched "+" is approximately 0.4 foot north and 0.3 foot east of the disturbed harrison.

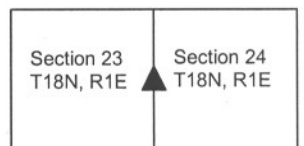
This corner was originally established as a wood post in June, 1820.



*Kenneth E. Hedge*  
Kenneth E. Hedge, County Surveyor

*James S. Swift*  
James S. Swift, IN LS 20200054  
March 11, 2009

Worth Township





PHOTOGRAPHIC DOCUMENTATION

Date of photography: March 31, 2008

Corner stone - view from south. Note layers: Chip & seal asphalt, gravel road, road sub-base, clay. The stone is embedded in the clay.



Corner stone - view from the west, across stone and along fence to the east.



Corner stone - overhead view from southeast.



Corner stone - overhead close up.



Same picture as to the left with the etched "+" enhanced for ease of visual detection.



For details and documentation, refer to related sheet "Section Corner Record."

# SECTION CORNER RECORD

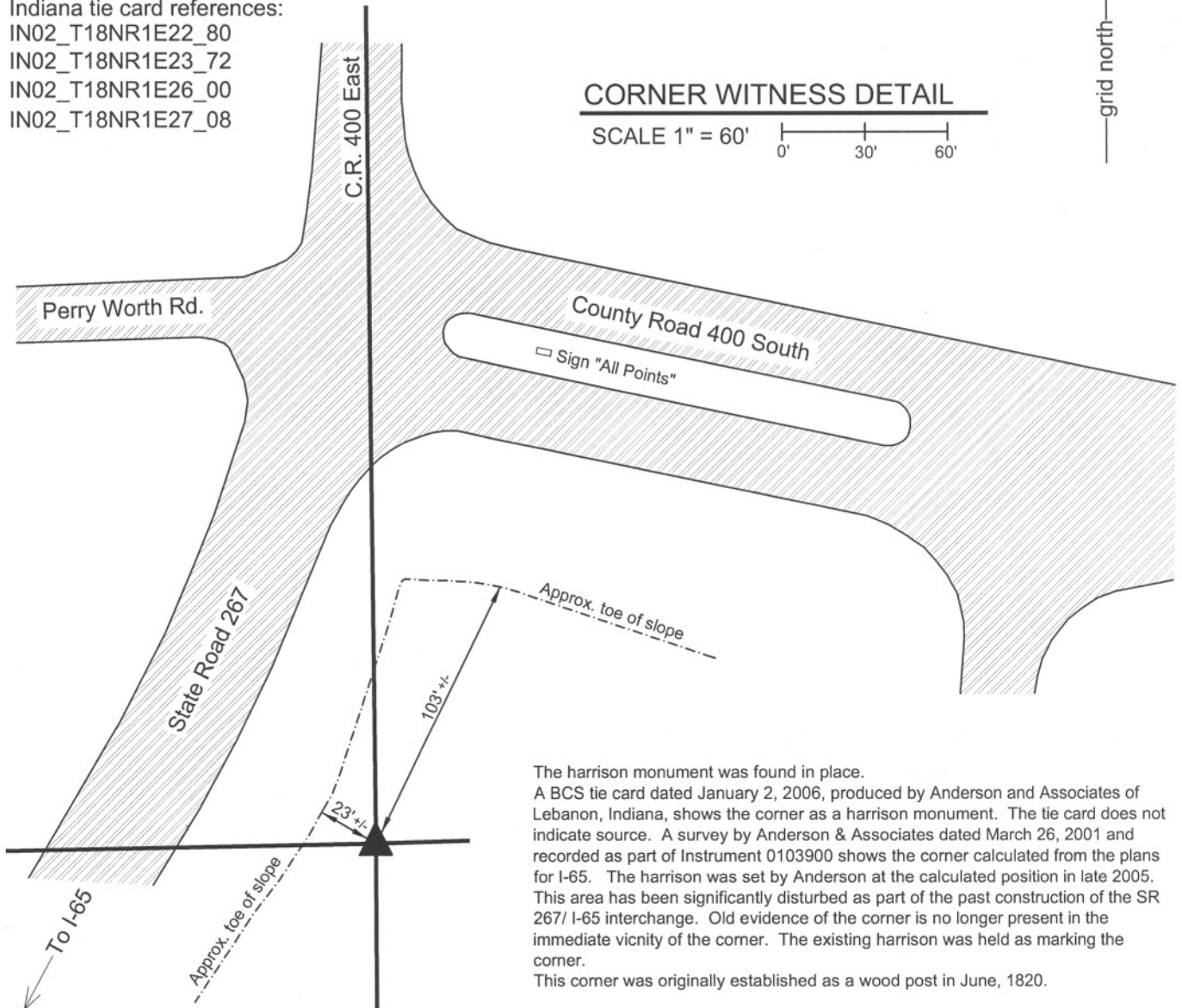
# SE 400-400

## BOONE COUNTY SURVEYOR'S OFFICE

State Plane grid coordinates NAD83 (NSRS 2007):  
North: 1724913.90 East: 3145969.14 (U.S. survey feet)

Type of monument: Harrison, 4" disk 'Section Corner'  
Depth: flush with adjacent ground

Indiana tie card references:  
IN02\_T18NR1E22\_80  
IN02\_T18NR1E23\_72  
IN02\_T18NR1E26\_00  
IN02\_T18NR1E27\_08



The harrison monument was found in place.  
 A BCS tie card dated January 2, 2006, produced by Anderson and Associates of Lebanon, Indiana, shows the corner as a harrison monument. The tie card does not indicate source. A survey by Anderson & Associates dated March 26, 2001 and recorded as part of Instrument 0103900 shows the corner calculated from the plans for I-65. The harrison was set by Anderson at the calculated position in late 2005. This area has been significantly disturbed as part of the past construction of the SR 267/ I-65 interchange. Old evidence of the corner is no longer present in the immediate vicinity of the corner. The existing harrison was held as marking the corner.  
 This corner was originally established as a wood post in June, 1820.



*Kenneth E. Hedge*  
 Kenneth E. Hedge, County Surveyor

*James S. Swift*  
 James S. Swift, IN LS 20200054  
 March 11, 2009

|                         |                         |
|-------------------------|-------------------------|
| Perry Twp Worth Twp     |                         |
| Section 22<br>T18N, R1E | Section 23<br>T18N, R1E |
| Section 27<br>T18N, R1E | Section 26<br>T18N, R1E |

# SECTION CORNER RECORD

SE 400-450

## BOONE COUNTY SURVEYOR'S OFFICE

State Plane grid coordinates NAD83 (NSRS 2007):

North: 1724993.33 East: 3148623.80 (U.S. survey feet)

Type of monument: Harrison, 4" disk 'Section Corner'

Depth: Flush with adjacent road surface

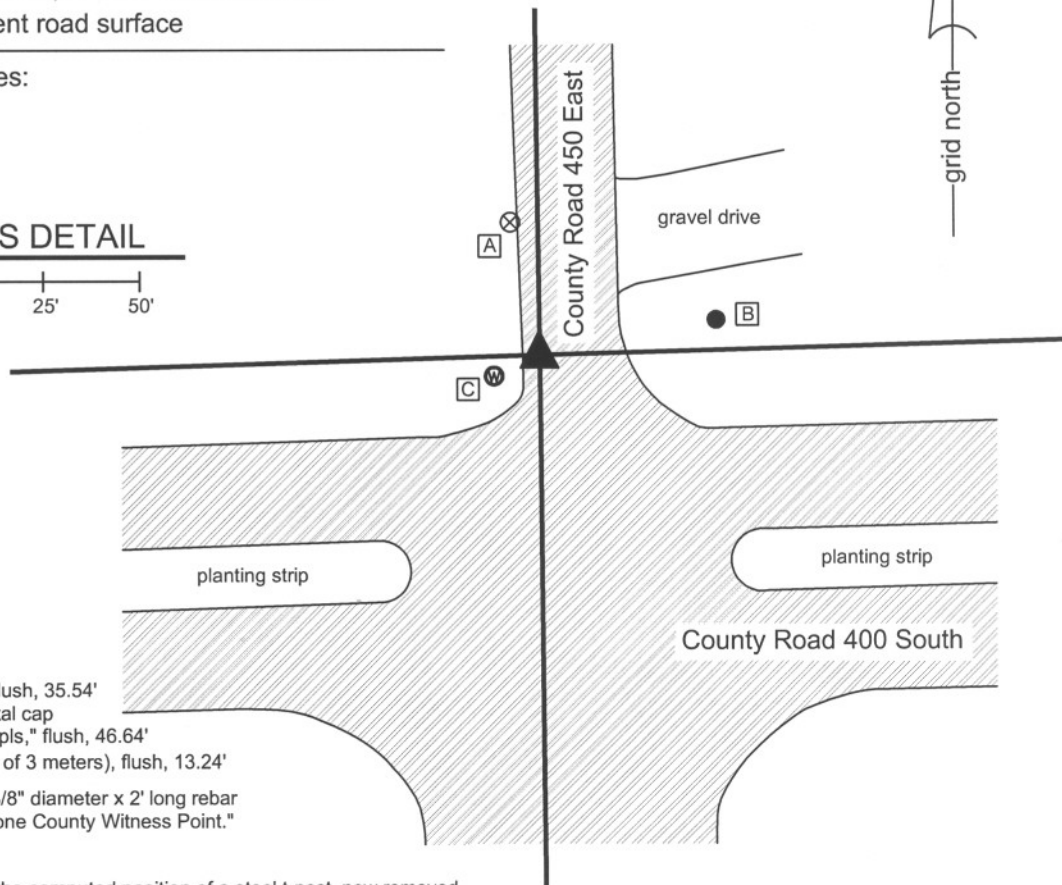
Indiana tie card references:

IN02\_T18NR1E23\_76

IN02\_T18NR1E26\_04

### CORNER WITNESS DETAIL

SCALE 1" = 50'



- A - Boone County witness mark, flush, 35.54'
- B - 5/8" rebar in concrete with metal cap stamped "Amer Cons Engr Indpls," flush, 46.64'
- C - Water meter, top center (S.W. of 3 meters), flush, 13.24'

Boone County witness mark is a 3/8" diameter x 2' long rebar bearing a metal cap stamped "Boone County Witness Point."

The harrison monument was set at the computed position of a steel t-post, now removed.

November 28, 1870 states "Reestablished from stump of SW Elm. Set a Rock 14,12,11 marked +." No recent BCS tie cards were found referencing this corner. Significant excavation was not performed at this corner. It is known that significant construction has occurred at this site recently as part of the Anson development and more specifically the construction of County Road 400 South and the relocation of County Road 450 East at its intersection with C.R. 400 South. It is also known that a water main was installed in the immediate vicinity of the corner and it is considered unlikely that the record stone or other evidence of the corner survived the land disturbing activities. Preliminary surveys to the Anson development by American Consulting Engineers demonstrate a steel t-post found and held as the best available evidence of the corner. Given the disturbance of the area subsequent to those surveys, the position of the t-post, now removed, was held as the position of the corner for this record. The position of the t-post was computed with respect to the relative positions of found monuments which have not been disturbed and which are shown on surveys by American Consulting Engineers. Numerous surveys have been reconstructed to give an overall picture of the Anson area prior to construction. Particularly relevant to the subject corner of this record are surveys recorded in Survey Book 8, pages 28 and 42 in the Office of the Boone County Recorder. It is noted that these two surveys were analyzed in conjunction with numerous other surveys by the same company and were not treated as independent documents, but as part of a larger picture. The computed position is influenced by the relative position of some monuments which are not shown on the two referenced surveys, but are shown on other similar recorded documents. Information about the geodetic control network underlying the various Anson surveys was provided to this office by American Consulting Engineers and was also used in the computation of this and other corners. Overall uncertainties of approximately 0.2 foot may be associated with the relative positions of found monuments in comparison with the published locations throughout the Anson area. This corner was originally established as a wood post in June, 1820.



*Kenneth E. Hedge*  
Kenneth E. Hedge, County Surveyor

*James S. Swift*  
James S. Swift, IN LS 20200054

July 14, 2010

Worth Twp

Section 23  
T18N, R1E

Section 26  
T18N, R1E

# SECTION CORNER RECORD

# SE 400-500

## BOONE COUNTY SURVEYOR'S OFFICE

State Plane grid coordinates NAD83 (NSRS 2007):

North: 1725066.53 East: 3151280.00 (U.S. survey feet)

Type of monument: Harrison, 4" disk 'Section Corner'

Depth: One inch below adjacent road surface

Indiana tie card references:

IN02\_T18NR1E23\_80 IN02\_T18NR1E24\_72

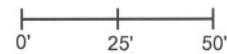
IN02\_T18NR1E25\_00 IN02\_T18NR1E26\_08

The harrison monument was set in the computed position of a rebar and in the immediate vicinity of a disturbed stone found.

A BCS record of June 17, 1882 states "Reestablished from stumps Set Rock 13,9,5 1/2 +." A BCS tie card dated June 10, 1991 shows the corner as a "1 inch rebar found 0.3' below surface in line w/ W. fence." Although this significant construction has occurred recently in the vicinity of this corner as part of the Anson development and more specifically the construction of County Road 400 South, preliminary excavation on July 23, 2009 indicated that the old road bed was not entirely removed below this corner and the possibility that the record stone was in place merited further excavation. Full excavation occurred on July 28, 2009. Prior to excavation the position for the rebar shown on the 1991 record had been computed by means of the relative positions of other monuments shown on preliminary surveys to the Anson development by American Consulting Engineers. Please refer to the record for the quarter corner to the west, SE-400-450, for details about the computation of the position of corners shown on surveys of the Anson development. Excavation revealed the cross section of the road in this area is 5 inches of new asphalt over 5 inches of modern #53 road stone, under which approximately 8 inches of the base of the old road bed still exists. The rebar was not found and was apparently removed during construction. The record stone was found at the bottom of the road bed. As originally found, the stone was at a depth of approximately 19 inches, and measured 13 inches N-S by 5 1/2 inches E-W by 9 inches tall. A clear and distinct "+" was visible at the north end of the stone. It appeared that the stone was lying on its side and had been knocked over from the south. During the excavation of other corners, it has been observed that in the latter half of the 1800s field crews from this office appear to have generally followed the procedure of setting a single stone, or the the top stone if multiple stones were set, in a vertical orientation with the etched "+" either on top, or if on the side, generally noted as such. Almost every stone found from that era is also noted to be at the bottom of the old road bed or, most often, protruding 2 to 4 inches out of the clay layer and into the road bed. Comparing the orientation of this stone with that of previous, similar stones found, this stone most definitely appeared to be lying on its side. The observation of a break in the stone on the edge which would have been the south edge prior to being knocked over, is accepted as further evidence of the the likelihood that the stone was hit on the south side by a piece of machinery and pushed over towards the north. Standing the stone up, as it may have been prior to being knocked over, the etched "+" is on the top and the top of the stone is at 15 inches deep, which would have put the stone protruding approximately 3 inches out of the clay layer and into the bottom of the road bed, and the stone is situated with a wide base at the bottom, tapering slightly towards the top. When stood up, the stone was approximately 8 inches north of the computed position for the rebar. Although it was apparent that the stone had been knocked over from the south, it was not clear whether its overall position had been compromised. It is entirely possible that the stone was pushed to the north as it was being knocked over, which indicates that the position of the rebar may be just as valid as the position of the stone as originally found. Given the clear disturbance of the stone, the immediate proximity of the position of the rebar to the stone, and the acceptance of the rebar for previous surveys, including the Anson Surveys and the 1991 tie card, the position of the rebar was held as marking the corner. The stone was removed and the harrison monument was set at the computed position of the rebar. This corner was originally established as a wood post in June, 1820.

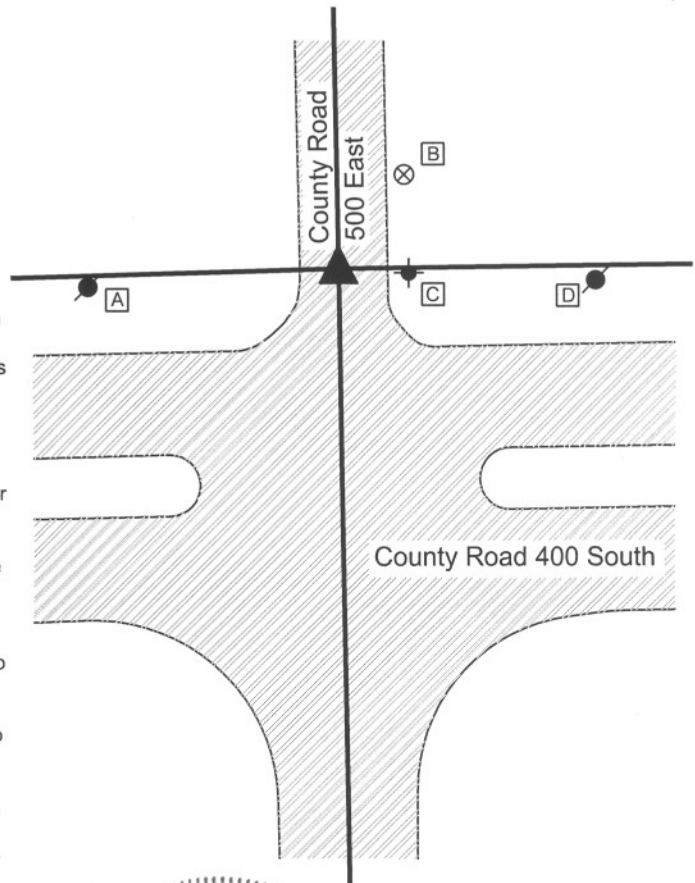
### CORNER WITNESS DETAIL

SCALE 1" = 50'



- A - Boone County witness mark, flush, 29.87'
- B - Mag nail set in E. side power pole, 2.0' a.g., 63.0'
- C - Fire hydrant, N.W. base bolt, 17.30'
- D - Mag nail set in N.W. side power pole, 65.4'

Boone County witness mark is a 3/8" diameter x 2' long rebar bearing a metal cap stamped "Boone County Witness Point."



Worth Township

|                         |                         |
|-------------------------|-------------------------|
| Section 23<br>T18N, R1E | Section 24<br>T18N, R1E |
| Section 26<br>T18N, R1E | Section 25<br>T18N, R1E |

*Kenneth E. Hedge*  
Kenneth E. Hedge, County Surveyor

*James S. Swift*  
James S. Swift, IN LS 20200054

July 14, 2010

PHOTOGRAPHIC DOCUMENTATION

Date of photography: July 28, 2009

View of the stone as first exposed.



The stone removed from the road bed and situated in the orientation at which it was found.



The stone stood up in the orientation at which it was most likely originally set, with the etched mark on top. View from the east, looking west along the section line and north line of C.R. 400 South.



For details and documentation, refer to related sheet "Section Corner Record."