

SECTION CORNER RECORD

BOONE COUNTY SURVEYOR'S OFFICE

NW 800-850

State Plane grid coordinates NAD83 (2011):
 North: 1788037.46 East: 3079850.32 (U.S. survey feet)

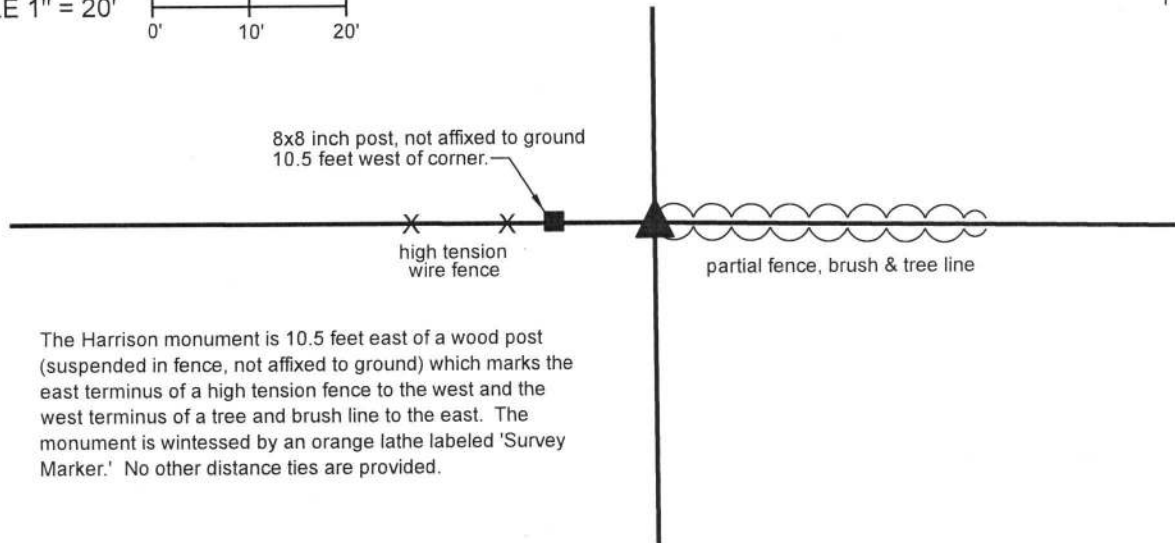
Type of monument: Harrison, 4" disk 'Section Corner'
 Depth: 5 inches above adjacent ground

Indiana tie card references:
 IN02_T20NR2W22_76 IN02_T20NR2W27_04



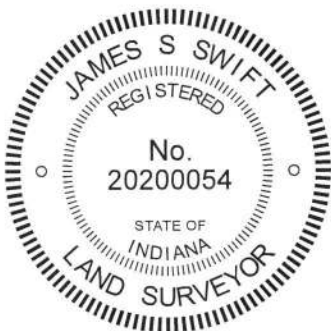
CORNER WITNESS DETAIL

SCALE 1" = 20'
 0' 10' 20'



The Harrison monument is 10.5 feet east of a wood post (suspended in fence, not affixed to ground) which marks the east terminus of a high tension fence to the west and the west terminus of a tree and brush line to the east. The monument is witnessed by an orange lathe labeled 'Survey Marker.' No other distance ties are provided.

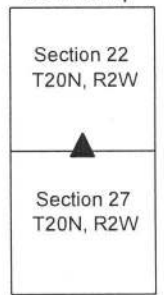
The Harrison monument was set in place of a wood corner post found. A BCS Record of September 19-20 and December 1, 1887 states, with respect to this corner, "Reestablished by measure, set rock 20.11.12 +." No recent BCS tie cards or recorded surveys were found referencing this corner. Substantial reconnaissance in the general vicinity of this corner and excavation in the immediate vicinity of the corner were performed in November, 2018. At that time, it was observed that a large wood post, 8x8 inches, was present representing the easterly terminus of a high tension wire fence to the west and a wire fence, generally on the ground to the east. No evidence of north-south fencing was found attached to this post. However, a smaller and evidently older wood post was found 10.5 feet to the east. This older post clearly had fencing to the east and west and evidence of fencing cut toward the north. Analysis of the relative positions of the post and the available evidence in the surrounding area, including many corner posts providing evidence of section corners, quarter corners, half-quarter corners, property corners and evidence along the nearby railroad right-of-way clearly indicated that the older, smaller post fits better as a corner position than does the newer, larger post. Excavation around both posts and in the immediate vicinity thereof revealed a variety of rocks, universally found in haphazard orientation. The specific stone called for in the 1887 record was not found. The older post was held accepted as providing the best available evidence of the corner. The post was removed from the ground on March 19, 2019 and a Harrison monument was set in position of the post. This corner was originally established as a wood post in 1829.



Kenneth E. Hedge
 Kenneth E. Hedge, County Surveyor

James S. Swift
 James S. Swift, IN LS 20200054
 April 3, 2019

Sugar Creek Township



SECTION CORNER RECORD

NW 850-800

BOONE COUNTY SURVEYOR'S OFFICE

State Plane grid coordinates NAD83 (2011):

North: 1790720.76 East: 3082480.25 (U.S. survey feet)

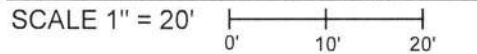
Type of monument: Harrison, 4" disk 'Section Corner'

Depth: Three inches above adjacent ground

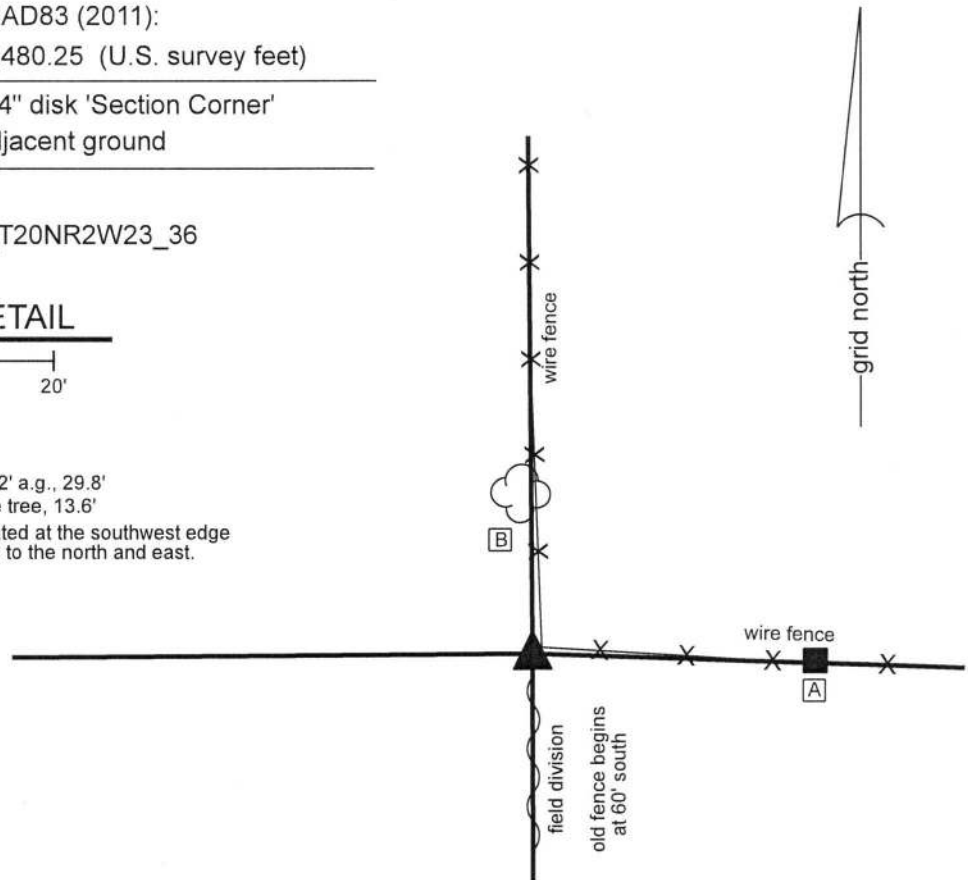
Indiana tie card references:

IN02_T20NR2W22_44 IN02_T20NR2W23_36

CORNER WITNESS DETAIL

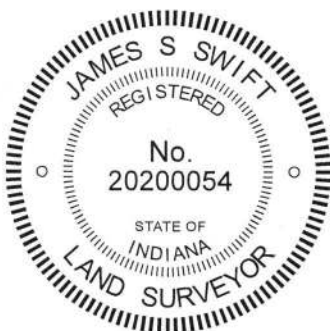


- A - Mag nail set in S. side wood post, 2' a.g., 29.8'
 - B - South side 14 inch diameter maple tree, 13.6'
- Note: the Harrison monument is situated at the southwest edge of a wood post at the corner of fences to the north and east.



The Harrison monument was set over a stone found.

No specific descriptions of this corner were found in the BCS Surveyor's Record beyond the original establishment of the corner as a wood post in 1829. The corner is mentioned as the terminal point for measurements in records of 1847, 1852, 1910 and 1912, indicating that some monument, typically a stone, was present from which to measure at those times. No recent BCS tie cards or recorded surveys were found referencing the corner. This corner was excavated on October 25, 2018. Prior to excavation, a wood corner post was found at the intersection of standing fences to the north and east. It is noted that the post does not appear to be ancient and is evidently of the same age as the posts to the north and east. It is also noted that the post appears to be slightly northeast of the overall fence lines in both the north and east directions, in that both fences appear to deflect slightly as they approach the corner. Excavation around the post revealed a stone found at 3 feet deep, slightly southwest of the post. The stone does not appear to be bracing the post and is more in-line with the overall fence lines than is the corner post. The stone is also in line with ancient fencing which was found beginning at approximately 60 feet south of the corner. During excavation, fragments of wood which appeared in the field to be the remnants of an ancient post were found from 12 inches deep to 30 inches deep, situated adjacent to and slightly north of the found stone. The stone has a flat top, 10 inches N-S by 8 inches E-W. No specific marks were found. The height of the stone was not measured. It is noted that the top of the stone is coincident with the top of the clay layer below the top soil, in character with numerous other stones found marking other corners throughout the county. It is also noted that the depth of the top soil, 3 feet, is deeper than is typically found throughout the county. The stone, being adjacent to the corner post but in-line with the overall fences, adjacent to evident fragments of an older post and being embedded in the clay layer below the top soil with the top of the stone being flat and horizontal, was accepted as providing the best available evidence of the original position of the corner and was held as marking the corner. The stone was left in place and a Harrison monument was set directly over the top, center of the stone.



Kenneth E. Hedge
 Kenneth E. Hedge, County Surveyor

James S. Swift
 James S. Swift, IN LS 20200054
 December 12, 2018

Sugar Creek Twp

Section 22 T20N, R2W	Section 23 T20N, R2W
-------------------------	-------------------------

SECTION CORNER RECORD

NW 850-900

BOONE COUNTY SURVEYOR'S OFFICE

State Plane grid coordinates NAD83 (2011):

Corner (Post): North: 1790684.38 East: 3077164.99 (U.S. survey feet)

Witness (Rebar): North: 1790683.52 East: 3077164.99 (U.S. survey feet)

Corner Monument: 9 inch round wood post


Witness monument: 5/8" rebar with metal cap stamped 'Boone County Surveyor'

Indiana tie card references:

IN02_T20NR2W21_44 IN02_T20NR2W22_36

CORNER WITNESS DETAIL

SCALE 1" = 40'



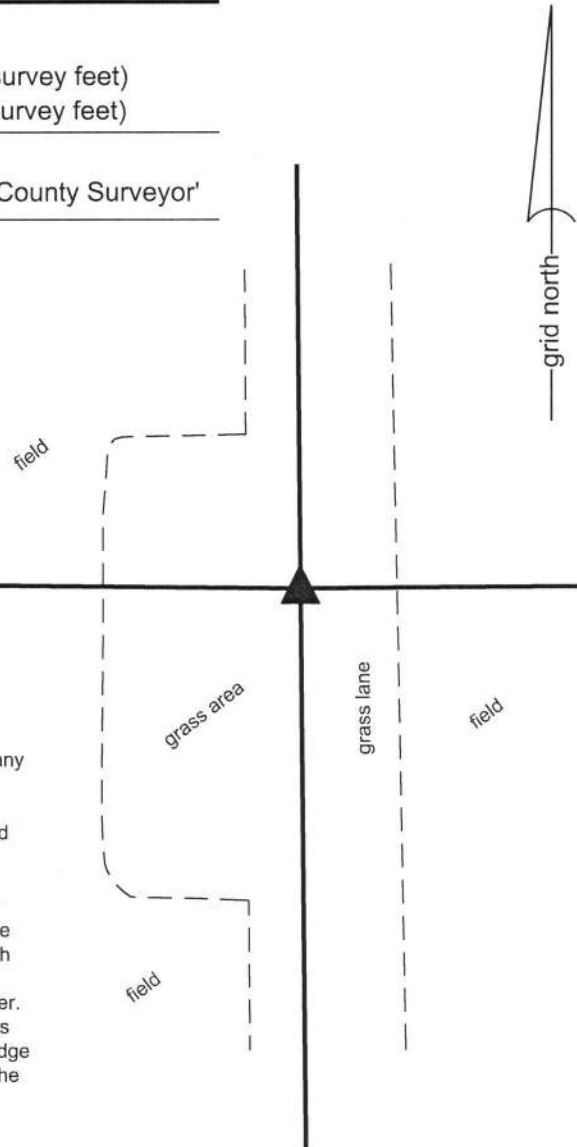
The wood post is witnessed by a 5/8 inch rebar with metal cap stamped 'Boone County Surveyor' set on the south edge of the post. The post is held as the corner and the rebar is an accessory witness to the corner. No distance ties are provided.

The wood corner post was found in place.

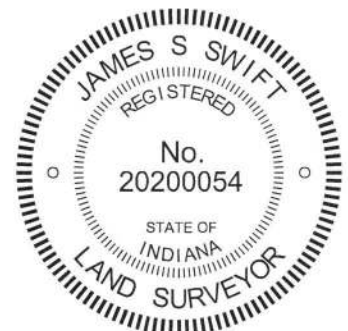
No specific descriptions of this corner were found in the BCS Surveyor's Record beyond the original establishment of the corner as a wood post in 1829 nor were any recent BCS tie cards or recorded surveys found referencing the corner.


Excavation at this corner was performed on October 30, 2018. A 9 inch diameter round wood post was found with attached fence cut-off toward the north, south and east. The post is along the west edge of a grass lane, in-line with several posts found to the north. The post appears to be very old and the position of the post works well with the relative positions of proximate corners. Ronald Merrill, owner and farmer of the adjacent land to the east, testifies that this post is known to be the old corner post and that old, standing fences did previously bear to the north, south and east from the post. Excavation around the base of the post revealed several small rocks, none of which appeared to have been purposely set to mark the corner. The post was accepted as the best available evidence of the corner. The post was left in place and a 30 inch length of 5/8 inch diameter rebar was set at the south edge of the post. The rebar is intended to act as a witness for the post. The center of the post is held as marking the corner.

This corner was originally established as a wood post in 1829.




Kenneth E. Hedge, County Surveyor




James S. Swift, IN LS 20200054

January 9, 2019

Sugar Creek Twp

Section 21 T20N, R2W	Section 22 T20N, R2W
-------------------------	-------------------------

SECTION CORNER RECORD

NW 900-800

BOONE COUNTY SURVEYOR'S OFFICE

State Plane grid coordinates NAD83 (2011):

North: 1793394.53 East: 3082457.39 (U.S. survey feet)

Type of monument: Harrison, 4" disk 'Section Corner'

Depth: Flush with adjacent ground

Indiana tie card references:

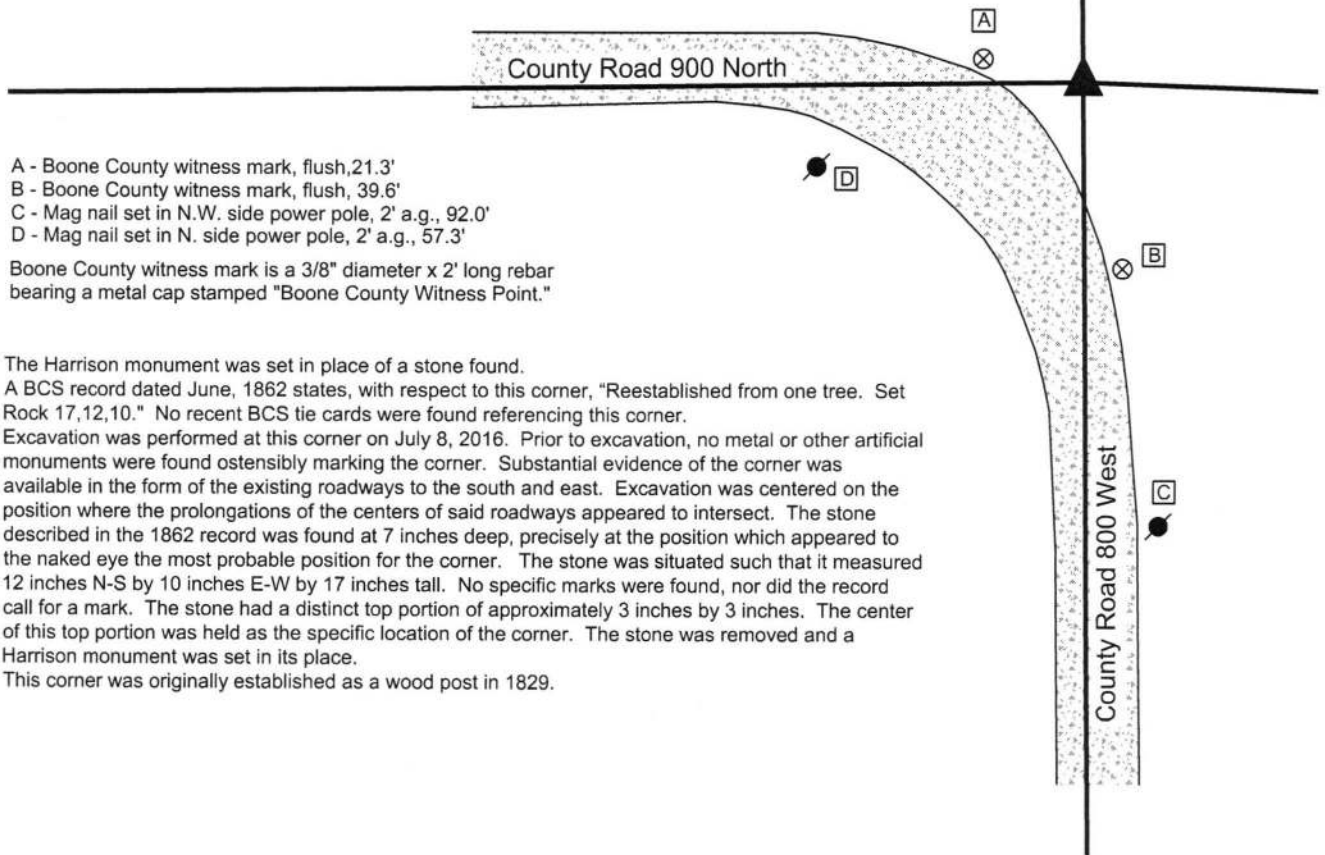
IN02_T20NR2W5_80 IN02_T20NR2W14_72

IN02_T20NR2W22_08 IN02_T20NR2W23_00



CORNER WITNESS DETAIL

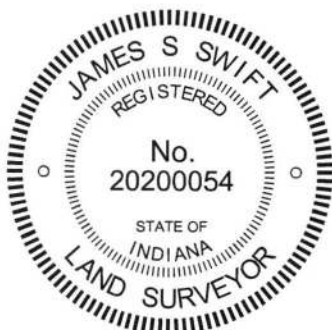
SCALE 1" = 40'



- A - Boone County witness mark, flush, 21.3'
- B - Boone County witness mark, flush, 39.6'
- C - Mag nail set in N.W. side power pole, 2' a.g., 92.0'
- D - Mag nail set in N. side power pole, 2' a.g., 57.3'

Boone County witness mark is a 3/8" diameter x 2' long rebar bearing a metal cap stamped "Boone County Witness Point."

The Harrison monument was set in place of a stone found. A BCS record dated June, 1862 states, with respect to this corner, "Reestablished from one tree. Set Rock 17,12,10." No recent BCS tie cards were found referencing this corner. Excavation was performed at this corner on July 8, 2016. Prior to excavation, no metal or other artificial monuments were found ostensibly marking the corner. Substantial evidence of the corner was available in the form of the existing roadways to the south and east. Excavation was centered on the position where the prolongations of the centers of said roadways appeared to intersect. The stone described in the 1862 record was found at 7 inches deep, precisely at the position which appeared to the naked eye the most probable position for the corner. The stone was situated such that it measured 12 inches N-S by 10 inches E-W by 17 inches tall. No specific marks were found, nor did the record call for a mark. The stone had a distinct top portion of approximately 3 inches by 3 inches. The center of this top portion was held as the specific location of the corner. The stone was removed and a Harrison monument was set in its place. This corner was originally established as a wood post in 1829.



Kenneth E. Hedge, County Surveyor

James S. Swift, IN LS 20200054
March 23, 2017

Sugar Creek Township

Section 15 T20N, R2W	Section 14 T20N, R2W
Section 22 T20N, R2W	Section 23 T20N, R2W

PHOTOGRAPHIC DOCUMENTATION

Date of photography: July 8, 2016

The stone as it was originally exposed.



The stone more fully exposed.



View from approximately above the stone looking west along County Road 900 North.



View from approximately above the stone looking south along County Road 800 West.



For details and documentation, refer to related sheet "Section Corner Record."

SECTION CORNER RECORD

NW 900-850

BOONE COUNTY SURVEYOR'S OFFICE

State Plane grid coordinates NAD83 (2011):

North: 1793364.73 East: 3079797.63 (U.S. survey feet)

Type of monument: Harrison, 4" disk 'Section Corner'

Depth: Six inches below adjacent gravel road surface

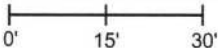
Indiana tie card references:

IN02_T20NR2W15_76

IN02_T20NR2W22_04

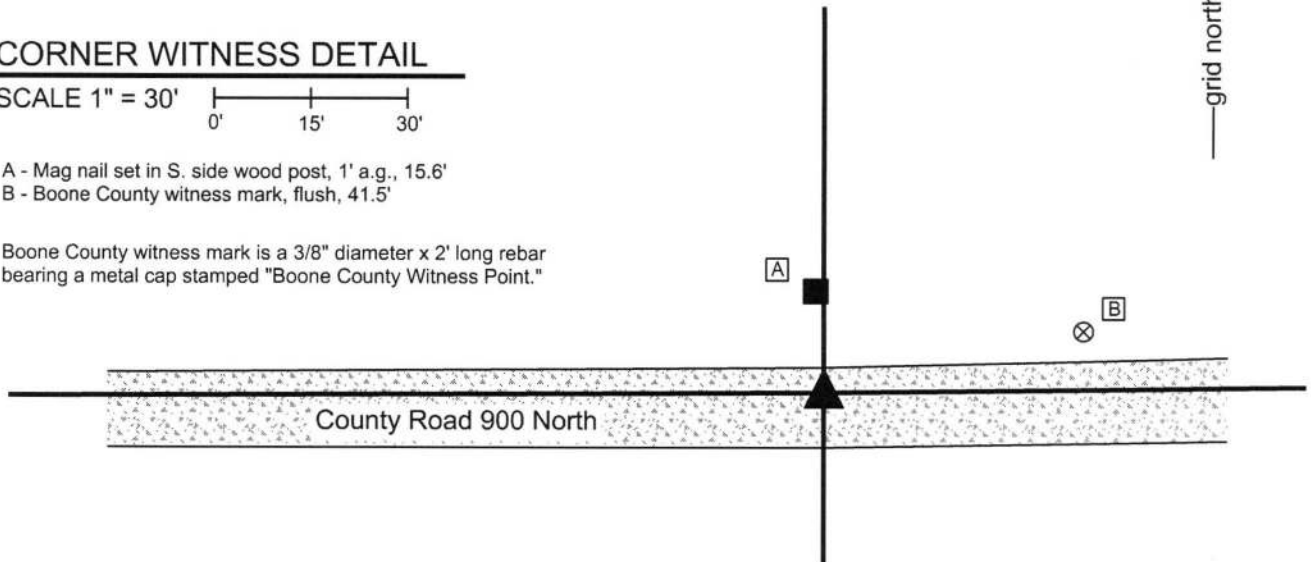
CORNER WITNESS DETAIL

SCALE 1" = 30'



- A - Mag nail set in S. side wood post, 1' a.g., 15.6'
- B - Boone County witness mark, flush, 41.5'

Boone County witness mark is a 3/8" diameter x 2' long rebar bearing a metal cap stamped "Boone County Witness Point."



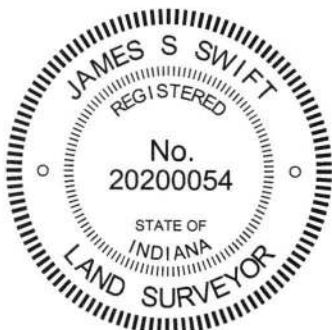
The Harrison monument was set over a stone found.

A BCS record dated August 30, 1872 states, with respect to this corner, "Rock, 24,16,13 +." No recent BCS tie cards were found referencing this corner.


Excavation was performed at this corner on July 5, 2016. Prior to excavation, a 5/8 inch diameter rebar was found at 3 inches below the surface of the gravel road, bent at the top, but with a straight, vertical shaft below the bend. Excavation revealed a large stone found at 15 inches deep. With the top 11 inches of the stone exposed, it measured 13 inches E-W by 11 inches N-W, was clearly much larger in the vertical dimension and appeared that it was likely larger yet in the horizontal dimensions. The stone had a distinct high point, but no specific marks were found. The position of the stone fit with local evidence of the corner in the form of the existing east-west roadway and an old end post on the north side of the road. The stone was held as marking the position of the corner. The top 6 inches of the stone were encased in concrete and a Harrison monument was set over the top, high point.

The rebar, removed during excavation, had been 1.0 foot south and 1.0 foot west of the top, high point of the stone.

This corner was originally established as a wood post in 1829.




Kenneth E. Hedge, County Surveyor


James S. Swift, IN LS 20200054
March 23, 2017

Sugar Creek
Township

Section 15
T20N, R2W

Section 22
T20N, R2W

PHOTOGRAPHIC DOCUMENTATION

Date of photography: July 5, 2016

The stone as it was originally exposed.



The stone more fully exposed.



View from above the stone looking west along County Road 800 North.



View of the stone and the post on the north side of County Road 900 North.



For details and documentation, refer to related sheet "Section Corner Record."

SECTION CORNER RECORD

NW 900-900

BOONE COUNTY SURVEYOR'S OFFICE

State Plane grid coordinates NAD83 (2011):

North: 1793352.60 East: 3077140.94 (U.S. survey feet)

Type of monument: Harrison, 4" disk 'Section Corner'

Depth: Six inches below adjacent gravel road surface

Indiana tie card references:

IN02_T20NR2W16_80 IN02_T20NR2W15_72

IN02_T20NR2W21_08 IN02_T20NR2W22_00

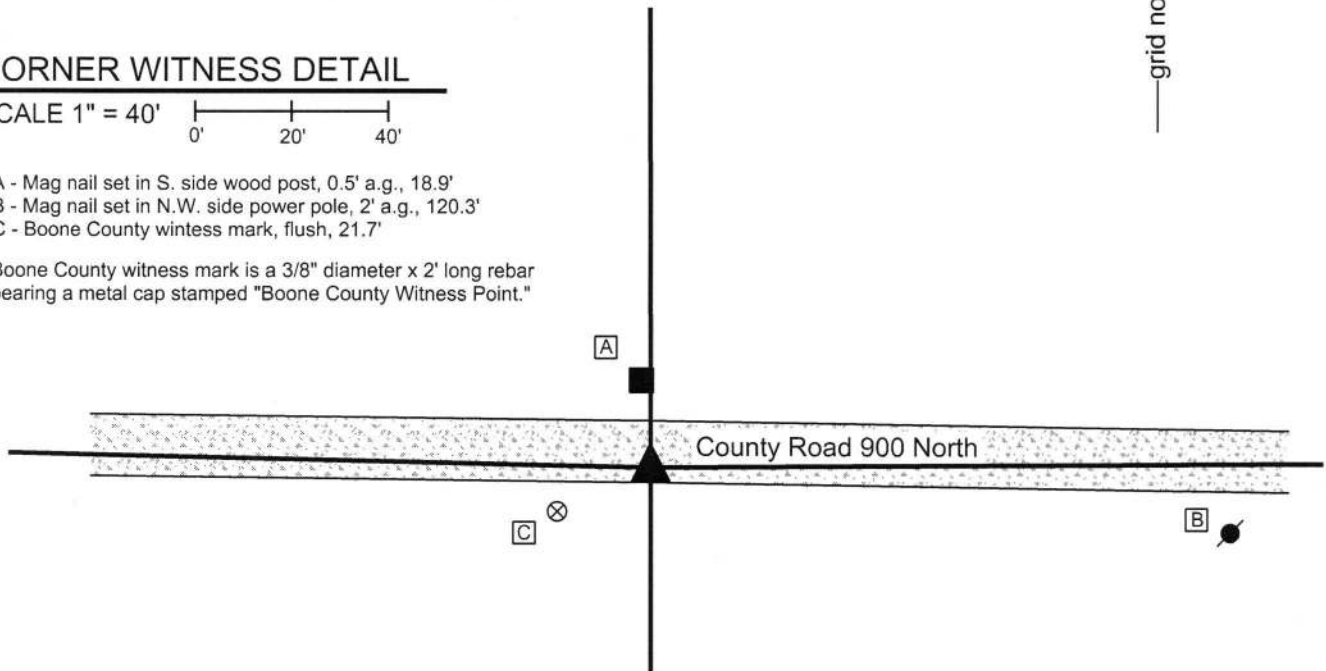


CORNER WITNESS DETAIL

SCALE 1" = 40'

- A - Mag nail set in S. side wood post, 0.5' a.g., 18.9'
- B - Mag nail set in N.W. side power pole, 2' a.g., 120.3'
- C - Boone County witness mark, flush, 21.7'

Boone County witness mark is a 3/8" diameter x 2' long rebar bearing a metal cap stamped "Boone County Witness Point."



The Harrison monument was set over a stone found.

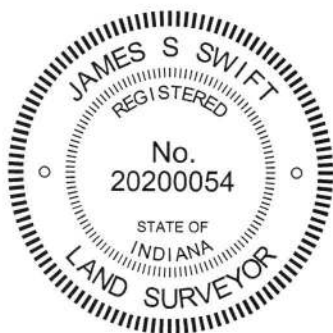
A BCS record dated March 29-31, 1858 references this corner as a Rock 12, 16, noting that the corner was "Reestablished from old Wit tree." No recent BCS tie cards were found referencing this corner.

Excavation was performed at this corner on June 24, 2016. Prior to excavation, a 5/8 inch diameter rebar was found at 1 inch deep in the gravel road, slightly bent at the top. Excavation revealed the rock described in the 1858 record at 13 inches deep.

With the top 6 inches of the stone exposed, it measured 12 inches NW-SE and 15 inches NE-SW, and appeared substantially larger in the vertical dimension. The stone was embedded in the clay layer below the road, protruding slightly into the bottom of the road bed. The top of the stone, as found, was not oriented in cardinal directions. It is noted that the adjacent corner 1/2 mile to the east, set during the same survey, was also not oriented in cardinal directions. No distinct marks were found on the stone nor does it have a distinct high point. The two dimensions measured on the stone match closely with the 1858 record and the stone was held as marking the corner. The center of the top of the stone was held as the specific position of the corner and a Harrison monument was set over this point. The top of the stone was embedded in concrete.

The rebar found prior to excavation and removed during excavation had been 0.5 foot north and 2.2 feet west of the top, center of the stone.

This corner was originally established as a wood post in 1829.



Kenneth E. Hedge, County Surveyor

James S. Swift, IN LS 20200054
March 23, 2017

Sugar Creek Township

Section 16 T20N, R2W	Section 15 T20N, R2W
Section 21 T20N, R2W	Section 22 T20N, R2W

PHOTOGRAPHIC DOCUMENTATION

Date of photography: June 24, 2016

The stone as it was originally exposed.



View looking across the stone to the post on the north side of County Road 900 North.



The stone from above, washed.



For details and documentation, refer to related sheet "Section Corner Record."