

SECTION CORNER RECORD

NW 800-200

BOONE COUNTY SURVEYOR'S OFFICE

State Plane grid coordinates NAD83 (CORS96):

North: 1787863.62 East: 3114216.80 (U.S. survey feet)

Type of monument: Harrison, 4" disk 'Section Corner'

Depth: One inch below adjacent road surface


Indiana tie card references:

IN02_T20NR1W22_80 IN02_T20NR1W23_72

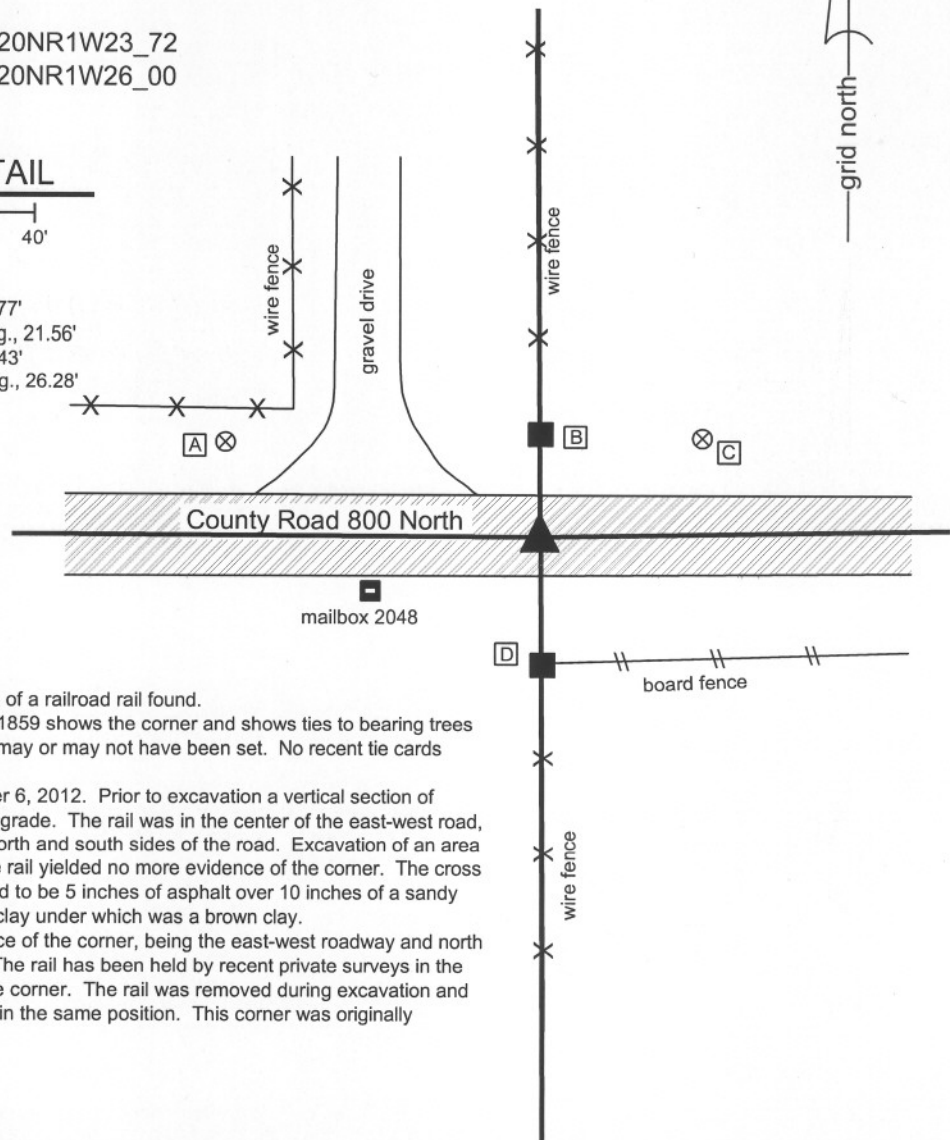
IN02_T20NR1W27_08 IN02_T20NR1W26_00

CORNER WITNESS DETAIL

SCALE 1" = 40'



- A - Boone County witness mark, flush, 68.77'
- B - Mag nail set in E. side wood post, 1' a.g., 21.56'
- C - Boone County witness mark, flush, 39.43'
- D - Mag nail set in N. side wood post, 1' a.g., 26.28'



The Harrison monument was set in place of a railroad rail found.

A record of a BCS record of August 25, 1859 shows the corner and shows ties to bearing trees but does not state what monumentation may or may not have been set. No recent tie cards have been found referencing this corner.

This corner was excavated on September 6, 2012. Prior to excavation a vertical section of railroad rail was found at 4 inches below grade. The rail was in the center of the east-west road, opposite the wood corner posts on the north and south sides of the road. Excavation of an area 5 feet N-S by 5 feet E-W centered on the rail yielded no more evidence of the corner. The cross section of the road at this point was found to be 5 inches of asphalt over 10 inches of a sandy gravel material over 10 inches of a blue clay under which was a brown clay.

The railroad rail fits with the local evidence of the corner, being the east-west roadway and north-south fences on each side of the road. The rail has been held by recent private surveys in the vicinity. The rail was held as marking the corner. The rail was removed during excavation and was replaced with a Harrison monument in the same position. This corner was originally established as a wood post in 1829.



Kenneth E. Hedge
Kenneth E. Hedge, County Surveyor

James S. Swift
James S. Swift, IN LS 20200054
November 5, 2012

Washington Township

Section 22 T20N, R1W	Section 23 T20N, R1W
Section 27 T20N, R1W	Section 26 T20N, R1W

SECTION CORNER RECORD

BOONE COUNTY SURVEYOR'S OFFICE

NW 850-200

State Plane grid coordinates NAD83 (CORS96):

North: 1790528.08 East: 3114197.24 (U.S. survey feet)

Type of monument: Harrison, 4" disk 'Section Corner'

Depth: four inches below adjacent gravel road surface

Indiana tie card references:

IN02_T20NR1W22_44

IN02_T20NR1W23_36

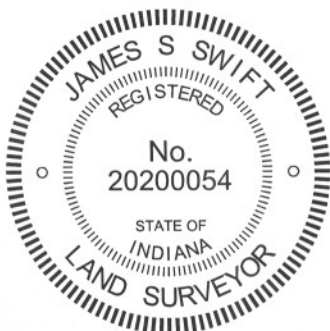
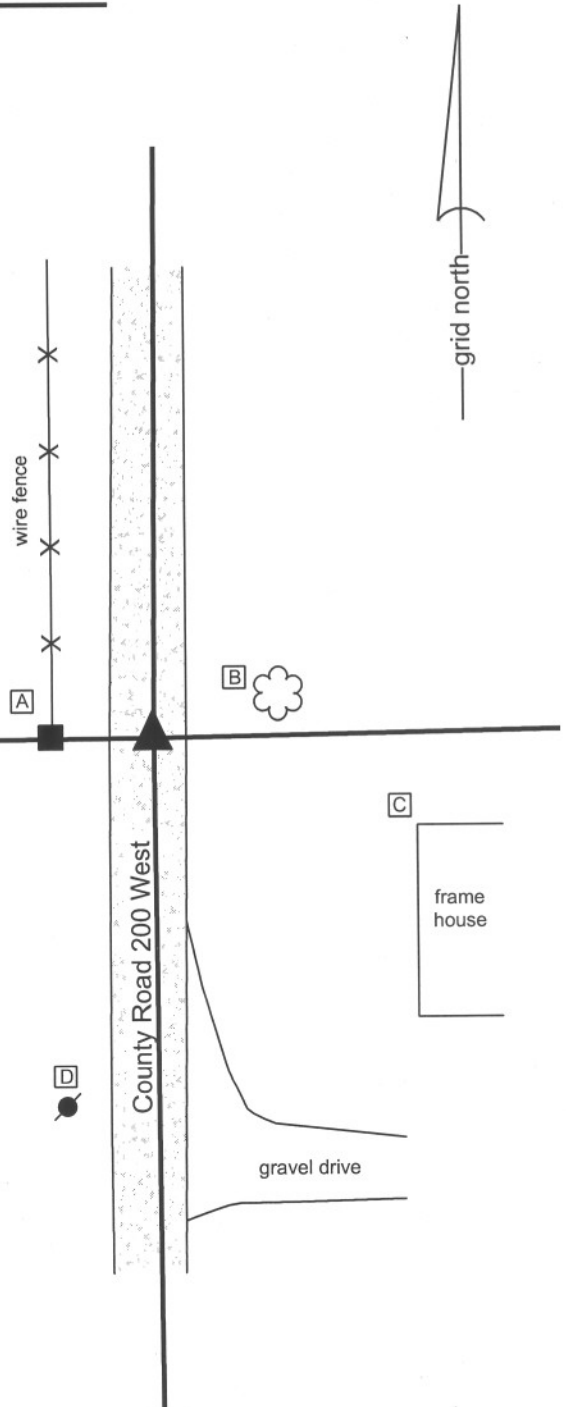
CORNER WITNESS DETAIL

SCALE 1" = 30'



- A - Mag nail set in E. side wood post, 4 inches a.g., 15.6'
- B - West edge, hackberry tree, 17.71'
- C - Northeast corner, frame house, 43.45'
- D - Mag nail set in N. side power pole, 2' a.g., 58.17'

The harrison monument was set in place of a 5/8 inch diameter rebar found. No specific descriptions of this corner were found in the BCS Surveyor's Record. No recent tie cards were found referencing this corner. This corner was excavated on September 6, 2012. Prior to excavation a 5/8 inch diameter rebar was found at 2 inches below grade, in the approximate center of the north-south county road opposite and approximately 1 rod distant from the old wood corner post on the west side of the road. Excavation of an area extending 4 feet north, 6 feet east, 4 feet south and 7 feet west of the rebar yielded no further evidence of the corner. The gravel road bed appears to be only four or five inches thick in this, under which is a sandy, rocky material which appears to be original underlying material and not constructed road sub-base. The rebar fits with local evidence in the form of the road and the fence post and the rebar is known to have been held as the corner by private surveys in this area. The rebar was removed during excavation and replaced with a harrison monument set approximately four inches below the top of the road surface. This corner was originally established as a wood post in 1829.



Kenneth E. Hedge
 Kenneth E. Hedge, County Surveyor

James S. Swift
 James S. Swift, IN LS 20200054
 November 5, 2012

Washington Township

Section 22 T20N, R1W	▲	Section 23 T20N, R1W
-------------------------	---	-------------------------

SECTION CORNER RECORD

BOONE COUNTY SURVEYOR'S OFFICE

NW 900-200

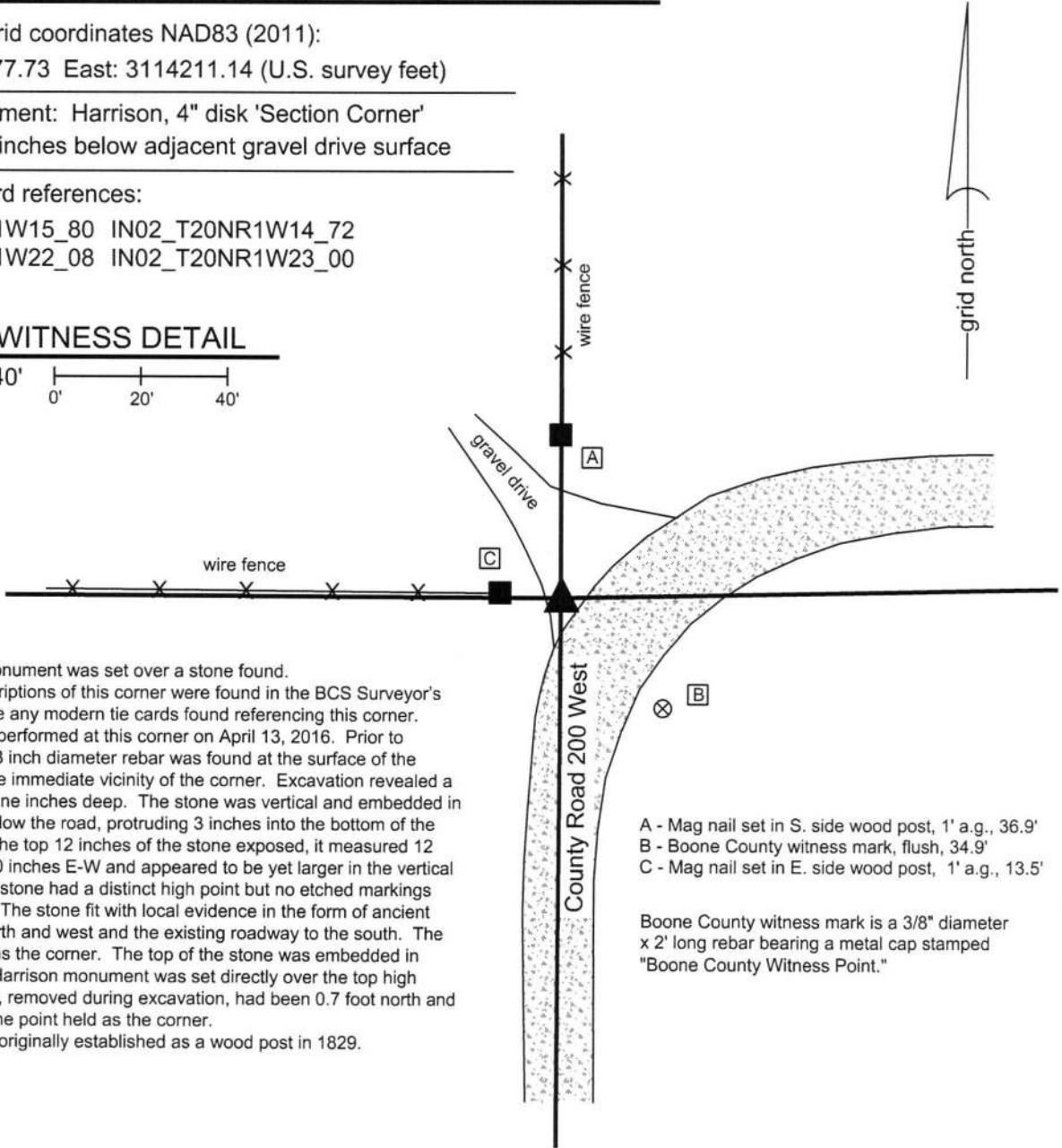
State Plane grid coordinates NAD83 (2011):
 North: 1793177.73 East: 3114211.14 (U.S. survey feet)

Type of monument: Harrison, 4" disk 'Section Corner'
 Depth: Three inches below adjacent gravel drive surface

Indiana tie card references:
 IN02_T20NR1W15_80 IN02_T20NR1W14_72
 IN02_T20NR1W22_08 IN02_T20NR1W23_00

CORNER WITNESS DETAIL

SCALE 1" = 40'



The Harrison monument was set over a stone found. No specific descriptions of this corner were found in the BCS Surveyor's Record, nor were any modern tie cards found referencing this corner. Excavation was performed at this corner on April 13, 2016. Prior to excavation, a 5/8 inch diameter rebar was found at the surface of the gravel road in the immediate vicinity of the corner. Excavation revealed a stone found at nine inches deep. The stone was vertical and embedded in the clay layer below the road, protruding 3 inches into the bottom of the road bed. With the top 12 inches of the stone exposed, it measured 12 inches N-S by 10 inches E-W and appeared to be yet larger in the vertical dimension. The stone had a distinct high point but no etched markings were observed. The stone fit with local evidence in the form of ancient fences to the north and west and the existing roadway to the south. The stone was held as the corner. The top of the stone was embedded in concrete and a Harrison monument was set directly over the top high point. The rebar, removed during excavation, had been 0.7 foot north and 1.3 feet east of the point held as the corner. This corner was originally established as a wood post in 1829.

- A - Mag nail set in S. side wood post, 1' a.g., 36.9'
- B - Boone County witness mark, flush, 34.9'
- C - Mag nail set in E. side wood post, 1' a.g., 13.5'

Boone County witness mark is a 3/8" diameter x 2' long rebar bearing a metal cap stamped "Boone County Witness Point."



Kenneth E. Hedge
 Kenneth E. Hedge, County Surveyor

James S. Swift
 James S. Swift, IN LS 20200054
 March 23, 2017

Washington Township

Section 15 T20N, R1W	Section 14 T20N, R1W
Section 22 T20N, R1W	Section 23 T20N, R1W

SECTION CORNER RECORD

NW 900-300

BOONE COUNTY SURVEYOR'S OFFICE

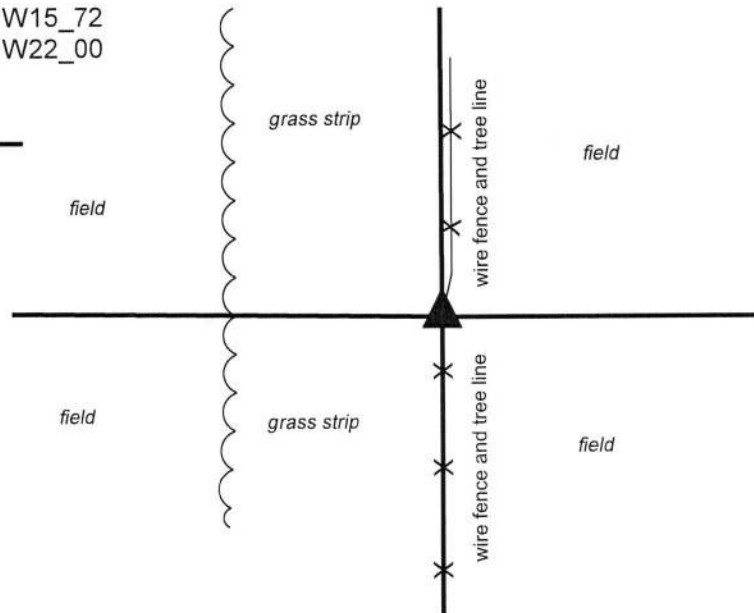
State Plane grid coordinates NAD83 (2011) (U.S. survey feet):
Corner (Center of Post): North: 1793178.08 East: 3108957.16
Witness (Mag with shiner): North: 1793178.08 East: 3108956.91

Indiana tie card references:

IN02_T20NR1W16_80 IN02_T20NR1W15_72
IN02_T20NR1W21_08 IN02_T20NR1W22_00

CORNER WITNESS DETAIL

SCALE 1" = 40'



The wood post is marked with a mag nail with washer stamped 'Boone County Surveyor.' The post is within a heavily wooded north-south tree line / fence line. No specific distance ties are provided.

The wood corner post was found in place.

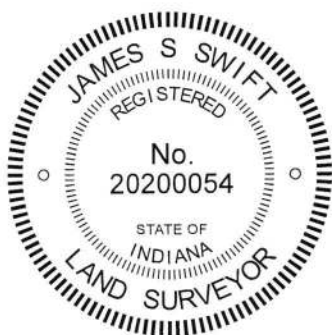
A BCS record of March 13-14, 1863 states, with respect to this corner, "Reest'd from trees. One standing. Other cut down. Set Rock 16x10x6 marked +." No recent BCS tie cards were found referencing this corner. The corner is shown as 'calculated position' on a survey by Jonathon E. Hause, LS 20600040, in Survey Book 14, page 11 in the Office of the Boone County Recorder.

This corner was excavated on November 14, 2018. Prior to excavation, a wood corner post was found with a wood brace on the south side at the terminus of fences to the north and south. Another post was found to the south, but appeared to be a brace post for the primary corner post. The fence to the north shifts to the east, slightly north of the post. This section of fence appears to be newer than the fence to the south. Excavation around the post revealed mostly roots of trees found. The north-south fence represents a heavily wooded fence line and the tree roots are thickly intertwined in the immediate vicinity of the post. Some fencing was found in the ground bearing west from the post, confirming the post as the corner of fences in three cardinal directions. Probing and manual excavation below one foot deep is impractical. Mechanized excavation would damage the valuable trees to the north and south of the corner and was not undertaken. It is possible that the corner stone remains undetected in the vicinity of the post.

It is observed that the record of March 13-14, 1863 contains information about the south quarter corner and southwest corner of section 16 as well as the subject corner, being the southeast corner of section 16. The record calls for stones at the other two corners, both of which have been found (see BCS corners NW 900-350 and NW 900-400). The record clearly indicates that the south quarter corner of section 16 was established equidistant from the southeast and southwest corners of the section and appears to indicate that all three corners fall along a straight line. The corner post found and discussed above falls very close to an equidistant prolongation of the line connecting the stones found at those corners, with the center of the post being approximately 1.2 feet south and 1.2 feet east of the theoretical point. This is held as confirmation that the position of the found post conforms closely with the position of the corner shown on the 1863 record. An approximate position for the calculated corner shown on the aforementioned Hause survey was estimated to be 8.5 feet east and 14.6 feet north of the post, as computed with respect to the respective positions of other corners and evidence shown on the survey. No monument or evidence of occupation was found in the vicinity of this computed position and no explanation is offered on the survey for how this position was computed.

The found corner post was held as marking the corner. A mag nail with washer stamped 'Boone County Surveyor' was driven into the west side of the post, 0.5 foot above ground. The specific location of the corner is held to be the center of the post, 0.25 foot east of the nail. The post is 6 inches by 6 inches.

This corner was originally established as a wood post in 1829.



Kenneth E. Hedge
Kenneth E. Hedge, County Surveyor

James S. Swift
James S. Swift, IN LS 20200054
February 20, 2019

Washington Township

Section 16 T20N, R1W	Section 15 T20N, R1W
Section 21 T20N, R1W	Section 22 T20N, R1W