

# SECTION CORNER RECORD

NE 800-300

## BOONE COUNTY SURVEYOR'S OFFICE

State Plane grid coordinates NAD83 (2011):

North: 1788042.22 East: 3140128.97 (U.S. survey feet)

Type of monument: Harrison, 4" disk 'Section Corner'

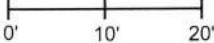
Depth: Four inches above adjacent ground.

Indiana tie card references:

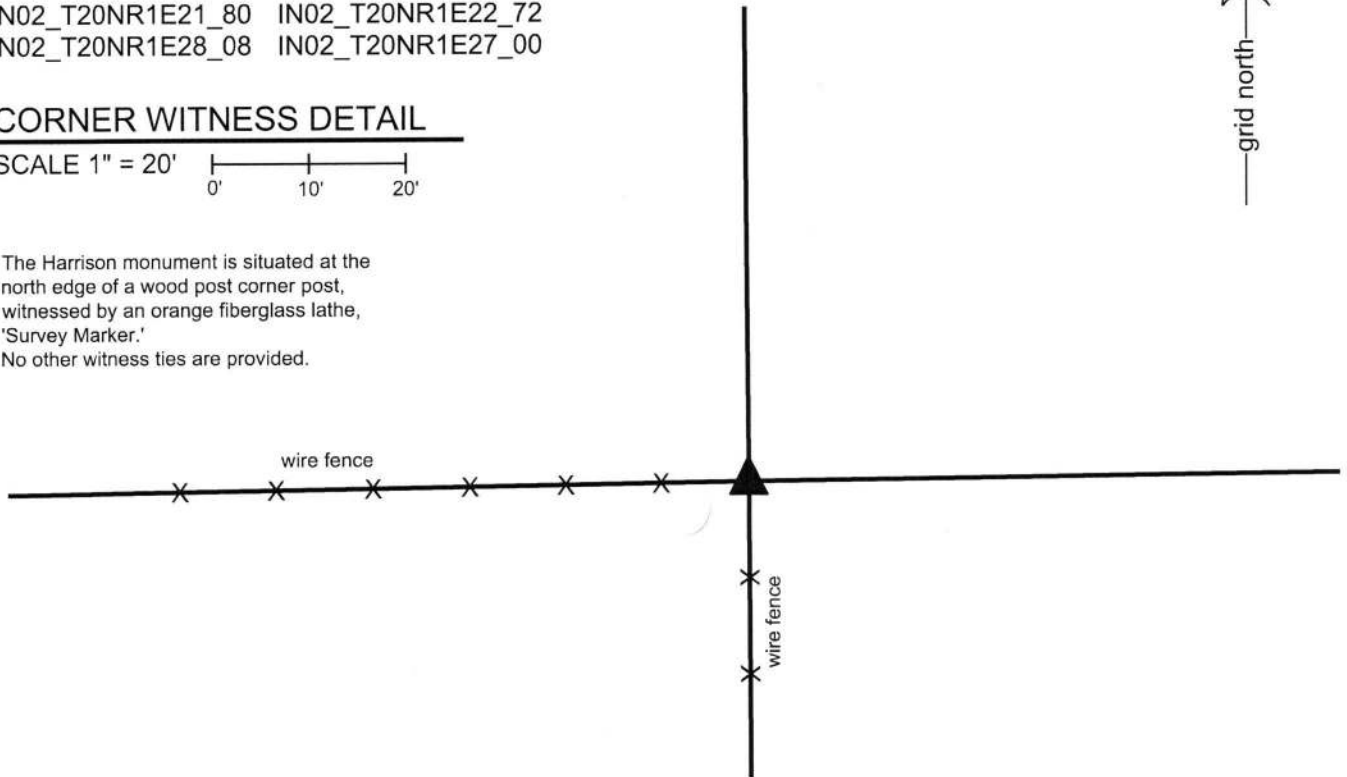
IN02\_T20NR1E21\_80 IN02\_T20NR1E22\_72

IN02\_T20NR1E28\_08 IN02\_T20NR1E27\_00

### CORNER WITNESS DETAIL

SCALE 1" = 20' 

The Harrison monument is situated at the north edge of a wood post corner post, witnessed by an orange fiberglass lathe, 'Survey Marker.'  
No other witness ties are provided.




The Harrison monument was set in place of remnants of an ancient wood post found at the north edge of a standing wood post and in-line with fences to the west and south.

No specific descriptions of this corner were found in the old BCS Surveyor's record beyond the original establishment of the corner as a wood post in 1822. No recent BCS tie cards were found referencing the corner.

Excavation was performed at this corner on March 13, 2018. Prior to excavation, the readily visible evidence of the corner was found in the form of a wood post at the intersection of fences to the west and south. Excavation around the post revealed numerous stones found around the post. None of the stones bore the characteristics associated with stones purposely set to mark a corner, based on evidence observed at many other corners throughout the county. Careful inspection of the situation yielded the observation that the standing post is in-line with the fence to the south but slightly south of the longer fence line to the west. The post is clearly offset from the old, established fence line to the west. Excavation at the north edge of the post revealed numerous fragments of wood which appeared to be the remnants of an ancient wood post along with buried scraps of fencing which appeared to represent old fencing to the north and west. The pieces of wood providing evidence of an old corner post were accepted as the best available evidence of the original position of the corner. A Harrison monument was set in place of this evidence, at the north edge of the standing wood post, in line with the fences to the west and south.



  
Kenneth E. Hedge, County Surveyor

  
James S. Swift, IN LS 20200054  
March 28, 2018

Clinton Township

Section 21 T20N, R1E	Section 22 T20N, R1E
Section 28 T20N, R1E	Section 27 T20N, R1E

# SECTION CORNER RECORD

NE 800-350

## BOONE COUNTY SURVEYOR'S OFFICE

State Plane grid coordinates NAD83 (2011):

North: 1788075.86 East: 3142747.91 (U.S. survey feet)

Type of monument: Harrison, 4" disk 'Section Corner'

Depth: One inch above adjacent ground

Indiana tie card references:

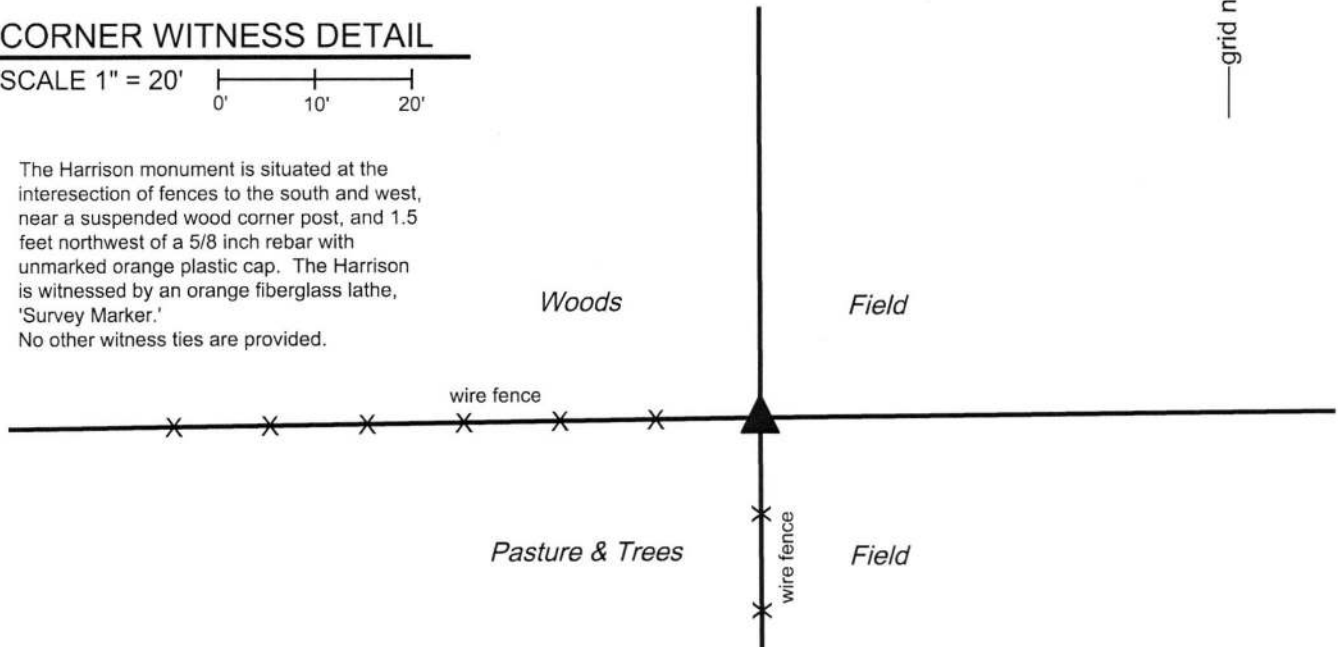
IN02\_T20NR1E22\_76 IN02\_T20NR1E27\_04



### CORNER WITNESS DETAIL

SCALE 1" = 20'

The Harrison monument is situated at the intersection of fences to the south and west, near a suspended wood corner post, and 1.5 feet northwest of a 5/8 inch rebar with unmarked orange plastic cap. The Harrison is witnessed by an orange fiberglass lathe, 'Survey Marker.'  
No other witness ties are provided.

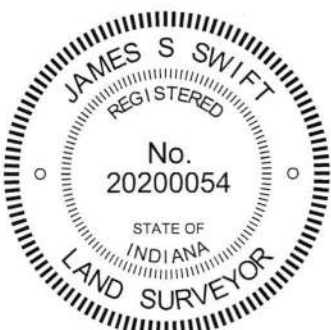


The Harrison monument was set over a stone found.

A BCS record dated May 4-5, 1865 states, with respect to this corner, "Reestablished by measurement. Set a Rock 20.9 by 8 in. marked T." No recent BCS tie cards were found referencing this corner.

Excavation was performed at this corner on March 12, 2018. Prior to excavation, a 5/8 inch rebar with an unmarked orange plastic cap was found near a wood corner post at the intersection of fences to the west and south. The post is old and is no longer attached to the ground, being suspended in the air by the attached fencing. Excavation in the immediate vicinity of the post revealed the stone called for in the 1865 record at 12 inches below grade. The top 8 inches of the stone were exposed. The stone is clearly vertical with a distinct high point. A vague mark on the southeast side appeared to be the "T" mark noted in the 1865 record. Excavation below 20 inches below ground level (12 inches from ground to stone plus the top 8 inches of the stone) was not practical as below this point the excavation hole stood in water. However, the dimensions of the stone could be approximately determined through the use of a metal probe. The probing indicated that the stone is 9 inches NS by 8 inches E-W by 20 inches tall on the NW side and 18 inches tall on the SE side. The stone was accepted as being the same monument described in the 1865 record. It did not appear to have been disturbed and was accepted as marking the corner. The top 8 inches of the stone were encased in concrete and a Harrison monument was set over the top, high point. The origin of the rebar is not known. It was not removed and remains 1.5 feet southeast of the Harrison. The exact original position of the wood corner post was not identified due to the suspended nature of the post, though the stone and Harrison appear to be at the northwest edge of the probable original position of the post.

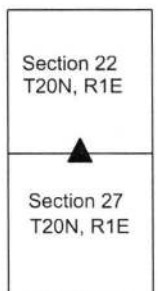
This corner was originally established as a wood post in 1822.



Kenneth E. Hedge, County Surveyor

James S. Swift, IN LS 20200054  
March 28, 2018

Clinton Township



# SECTION CORNER RECORD

## BOONE COUNTY SURVEYOR'S OFFICE

NE 800-400

State Plane grid coordinates NAD83 (CORS96):

North: 1788100.38 East: 3145357.30 (U.S. survey feet)

Type of monument: Harrison, 4" disk 'Section Corner'

Depth: six inches below adjacent gravel road surface

Indiana tie card references:

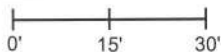
IN02\_T20NR1E22\_80 IN02\_T20NR1E23\_76

IN02\_T20NR1E27\_08 IN02\_T20NR1E26\_00



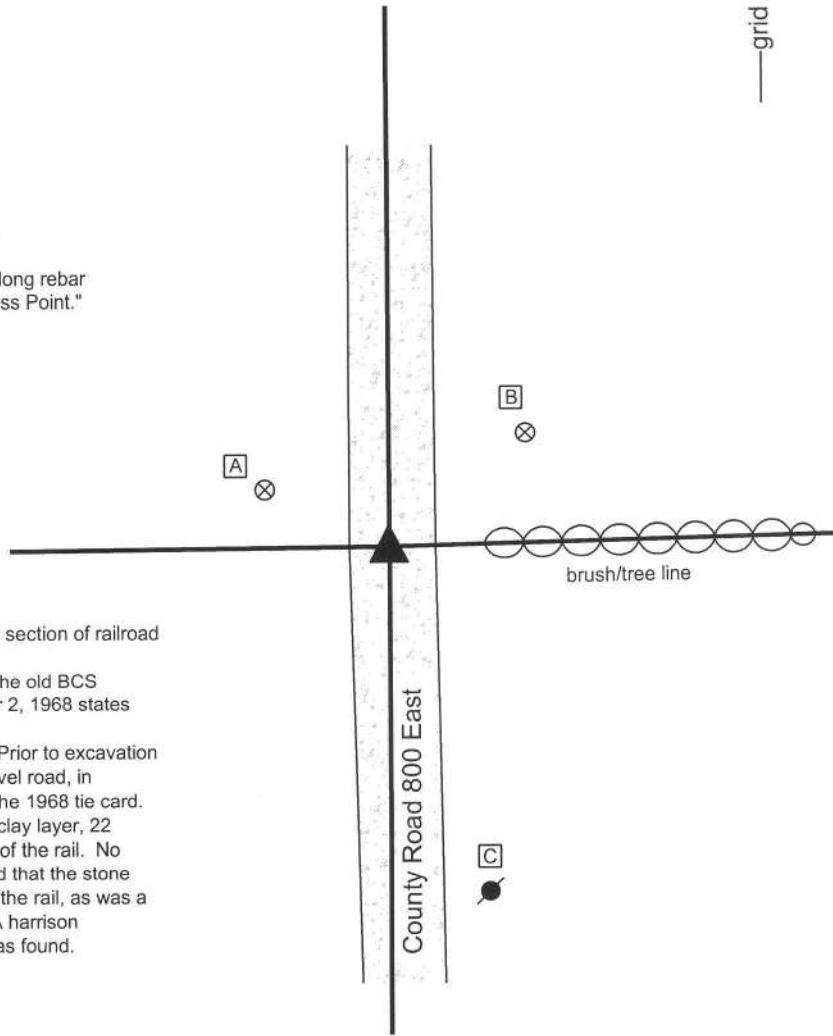
### CORNER WITNESS DETAIL

SCALE 1" = 30'



- A - Boone County witness mark, flush, 21.4'
- B - Boone County witness mark, flush, 27.6'
- C - Mag nail set in N. side power pole, 2' a.g., 55.2'

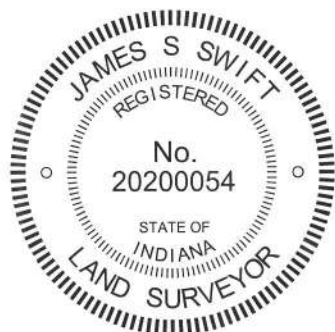
Boone County witness mark is a 3/8" diameter x 2' long rebar bearing a metal cap stamped "Boone County Witness Point."



The harrison monument was set in place of a vertical section of railroad rail found.

No specific descriptions of this corner were found in the old BCS Surveyor's Record. A BCS tie card dated September 2, 1968 states "stone found."

This corner was excavated on November 27, 2013. Prior to excavation a railroad rail was found at 11 inches deep in the gravel road, in agreement with the one remaining distance tie from the 1968 tie card. Excavation revealed a few fragments of wood at the clay layer, 22 inches deep, in the immediate vicinity of the position of the rail. No other evidence of the corner was found. It is believed that the stone was removed when found in 1968 and replaced with the rail, as was a common practice of BCS field crews from that era. A harrison monument was set in the position of the railroad rail as found.



*Kenneth E. Hedge*  
Kenneth E. Hedge, County Surveyor

*James S. Swift*  
James S. Swift, IN LS 20200054  
February 5, 2015

Clinton Township

Section 22 T20N, R1E	Section 23 T20N, R1E
Section 27 T20N, R1E	Section 26 T20N, R1E

# SECTION CORNER RECORD

NE 850-300

## BOONE COUNTY SURVEYOR'S OFFICE

State Plane grid coordinates NAD83 (CORS96):

North: 1790674.03 East: 3140108.38 (U.S. survey feet)

Type of monument: Harrison, 4" disk 'Section Corner'

Depth: One inch below adjacent road surface

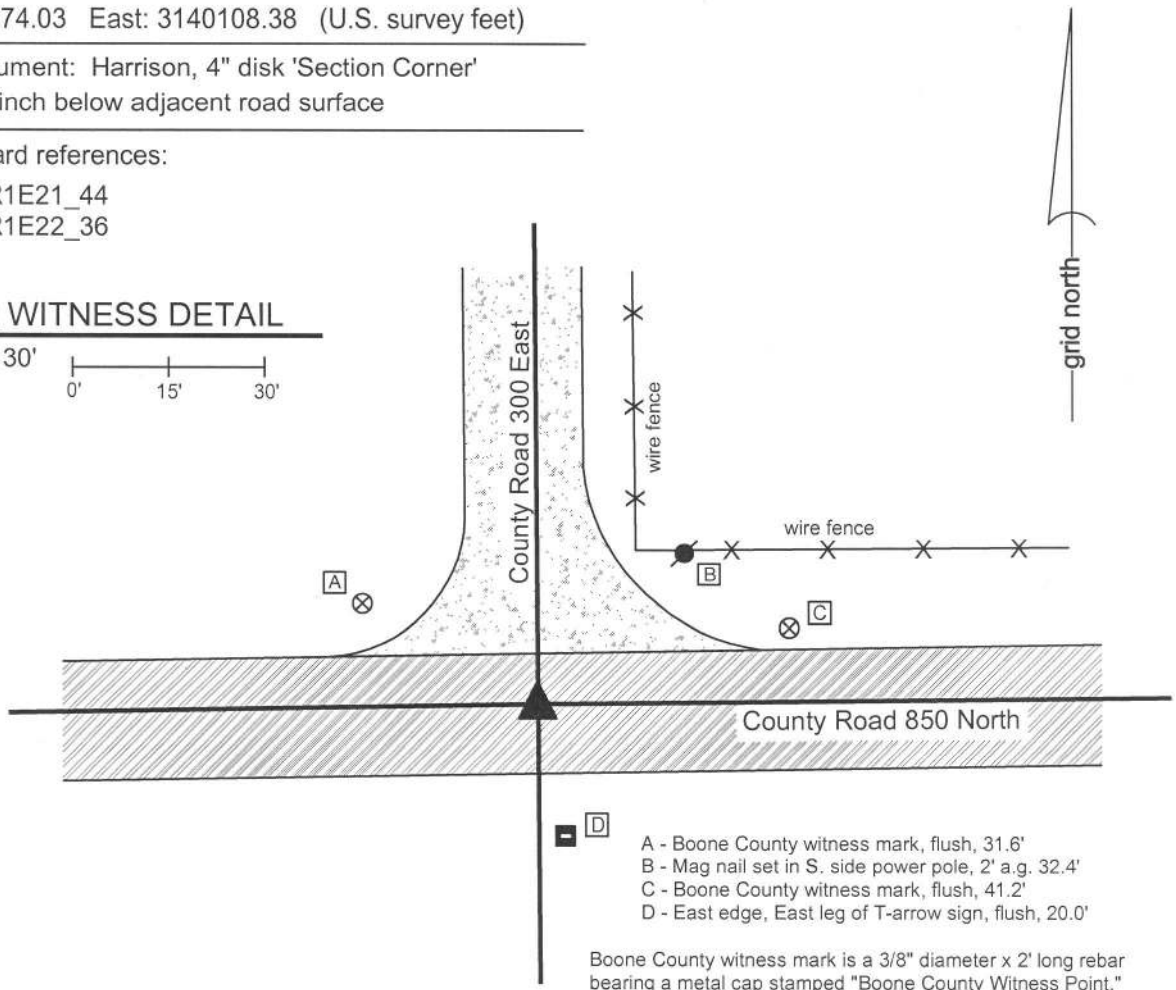
Indiana tie card references:

IN02\_T20NR1E21\_44

IN02\_T20NR1E22\_36

### CORNER WITNESS DETAIL

SCALE 1" = 30'



- A - Boone County witness mark, flush, 31.6'
- B - Mag nail set in S. side power pole, 2' a.g. 32.4'
- C - Boone County witness mark, flush, 41.2'
- D - East edge, East leg of T-arrow sign, flush, 20.0'

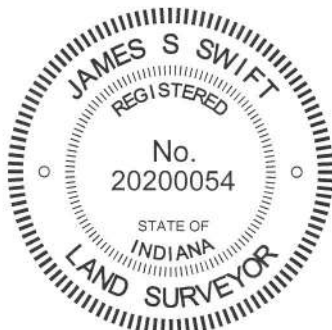
Boone County witness mark is a 3/8" diameter x 2' long rebar bearing a metal cap stamped "Boone County Witness Point."

The Harrison monument was set over the high point of a stone found.

A BCS record of August 20, 1874 states, with respect to this corner, "Reestablished from roots of Beech and finding the old stake that had been driven. Set Rock 16.14 by 7 in. +." No recent BCS tie cards were found referencing this corner.

Excavation was performed at this corner on May 23, 2014. Prior to excavation a 5/8 inch diameter rebar was found at the surface of the asphalt roadway. Excavation revealed a stone found at 20 inches deep. With the top 8 inches of the stone exposed, it measured 13 inches E-W by 7 inches N-S and appeared to be vertical. A clearly etched "+" mark was found on the south sloping side of the stone, near the east end. The high point of the stone is at the far east end and the etched + is on the south side, directly below the high point. The stone was accepted as being the rock described in the 1874 record and was held as marking the corner. The stone was left in place and a Harrison monument was set directly over the high point of the stone. The rebar, removed during excavation, had been 0.4 foot west and 0.5 feet north of the high point on the stone.

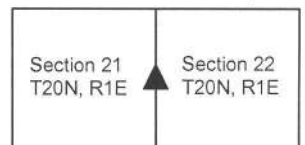
This corner was originally established as a wood post in June, 1822.



*Kenneth E. Hedge*  
Kenneth E. Hedge, County Surveyor

*James S. Swift*  
James S. Swift, IN LS 20200054  
March 27, 2015

Clinton Township



PHOTOGRAPHIC DOCUMENTATION

Date of photography: May 23, 2014

The stone as originally found.



The stone from above and north, showing the etched cross just below the high point.



The stone from above, showing the sloping north side and the vertical east and south sides.



View from the west, looking across the stone and east along County Road 850 North.



The top of the rock exposed, showing the + mark.



For details and documentation, refer to related sheet "Section Corner Record."

PHOTOGRAPHIC DOCUMENTATION

Date of photography: May 28, 2014

The stone as originally found.



The stone from above and west.



View from the north looking across the stone and south along County Road 400 East.



View from above the stone, looking east along County Road 850 North.



For details and documentation, refer to related sheet "Section Corner Record."

# SECTION CORNER RECORD

NE 850-400

## BOONE COUNTY SURVEYOR'S OFFICE

State Plane grid coordinates NAD83 (CORS96):

North: 1790732.61 East: 3145345.955 (U.S. survey feet)

Type of monument: Harrison, 4" disk 'Section Corner'

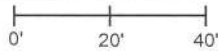
Depth: One inch below adjacent road surface

Indiana tie card references:

IN02\_T20NR1E22\_44 IN02\_T20NR1E23\_36

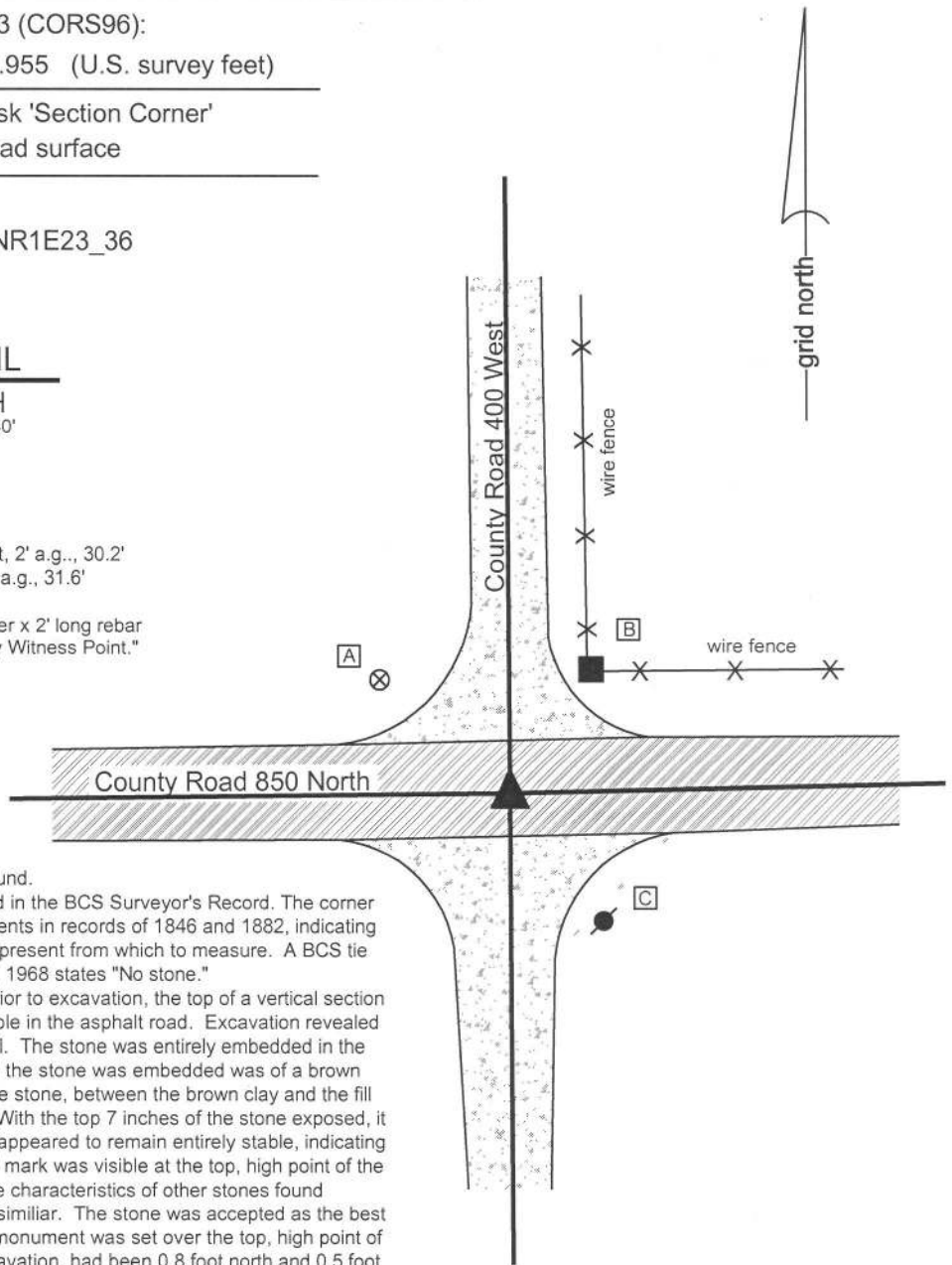
### CORNER WITNESS DETAIL

SCALE 1" = 40'



- A - Boone County witness mark, flush, 36.3'
- B - Mag Nail set in W. side, wood corner post, 2' a.g., 30.2'
- C - Mag nail set in N.E. side power pole, 18" a.g., 31.6'

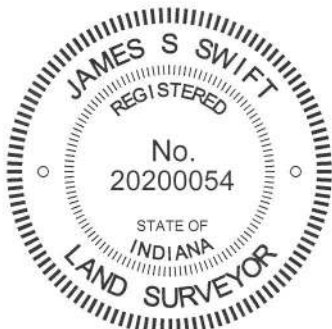
Boone County witness mark is a 3/8" diameter x 2' long rebar bearing a metal cap stamped "Boone County Witness Point."



The Harrison monument was set over a stone found.

No specific descriptions of this corner were found in the BCS Surveyor's Record. The corner is mentioned as the terminal point for measurements in records of 1846 and 1882, indicating that, at that time, some physical monument was present from which to measure. A BCS tie card referencing this corner, dated September 3, 1968 states "No stone."

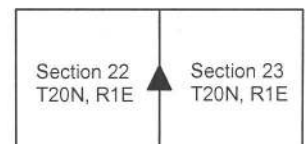
This corner was excavated on May 28, 2014. Prior to excavation, the top of a vertical section of railroad rail was found at 5 inches deep in a hole in the asphalt road. Excavation revealed a stone found at 30 inches deep, south of the rail. The stone was entirely embedded in the clay layer below the road bed. The clay in which the stone was embedded was of a brown color and a thick layer of gray clay was above the stone, between the brown clay and the fill material making up the bottom of the road bed. With the top 7 inches of the stone exposed, it measured 12 inches E-W by 10 inches N-S and appeared to remain entirely stable, indicating that it was yet much larger. A vague, shallow "+" mark was visible at the top, high point of the stone. The characteristics of the stone fit with the characteristics of other stones found throughout the county for which the records are similar. The stone was accepted as the best available evidence of the corner and a Harrison monument was set over the top, high point of the stone. The railroad rail, removed during excavation, had been 0.8 foot north and 0.5 foot east of the top, high point of the stone. It is most likely that the rail was set in association with the 1968 tie card. Clearly the statement "no stone" on that tie card was erroneous. This corner was originally established as a wood post in 1822.



*Kenneth E. Hedge*  
 Kenneth E. Hedge, County Surveyor

*James S. Swift*  
 James S. Swift, IN LS 20200054  
 March 27, 2015

Clinton Township



# SECTION CORNER RECORD

## BOONE COUNTY SURVEYOR'S OFFICE

NE 900-300

State Plane grid coordinates NAD83 (CORS96):

North: 1793312.18 East: 3140091.56 (U.S. survey feet)

Type of monument: Harrison, 4" disk 'Section Corner'

Depth: six inches below adjacent gravel road surface

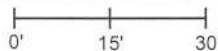
Indiana tie card references:

IN02\_T20NR1E16\_80 IN02\_T20NR1E15\_72

IN02\_T20NR1E21\_08 IN02\_T20NR1E22\_00

### CORNER WITNESS DETAIL

SCALE 1" = 30'



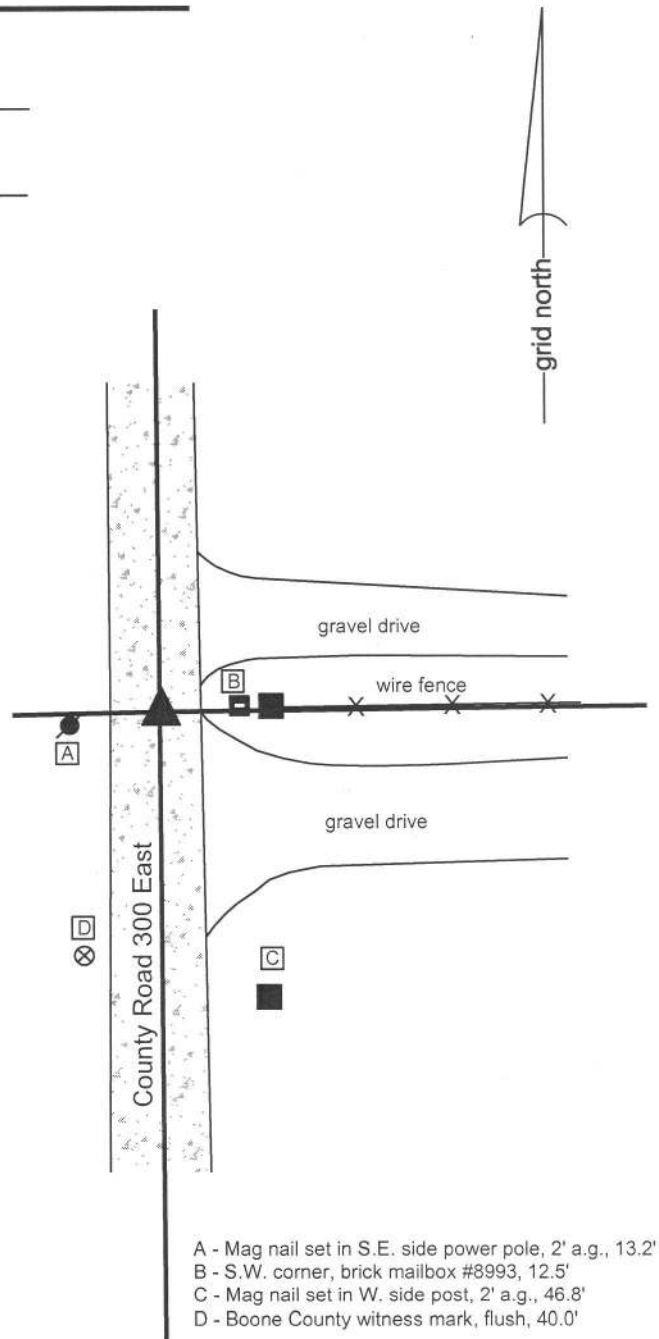
The Harrison monument was set in place of a 5/8 inch diameter rebar found. No specific descriptions of this corner were found in the old BCS Surveyor's Record, though the corner is mentioned as the terminal point for measurements in records of 1891 and 1901. A BCS tie card dated June 5, 1975 states "Stone found 8" deep - set rod."

This corner was excavated on May 22, 2015. Prior to excavation, a 5/8 inch diameter rebar was found at the surface of the gravel road. The top of the rebar was bent, but the primary shaft was straight and vertical yielding minimal uncertainty as to the original position of the monument. A stone was found at 2 inches deep, slightly south and west of the rebar. The stone was vertical and oriented in cardinal directions, being 11 inches tall, 4 inches North-South and 5 inches East-West. However, the stone was found to be entirely within the fill material of the road, with the bottom of the stone at the bottom of the road bed. In almost all cases, corner stones are found embedded in the clay layer below the road. The following features of the stone as a monument are uncertain: As noted, it was in the fill material rather than being embedded in the clay. It was at 2 inches deep whereas the 1975 record states that a stone was found at 8 inches. It did not appear to be the case, nor is it most logical to assume it to be the case, that the road had been scraped to 6 inches lower than its level in 1975. No marks were found on the stone, though given the lack of specific description in the BCS Surveyor's Record, this is not a particularly remarkable fact. It is not clear what happened in 1975. The reference points for the distance ties shown on the 1975 tie card are no longer present.

In the process of excavating and examining many other corners, it has been observed that the statement 'stone found - set rod [or rail]' on BCS tie cards from the late 1960s through the mid 1970s typically indicates that the stone was found, removed and replaced with a rebar or railroad rail. It is not known whether this was the case at this particular corner. It is possible that this stone was found in 1975, removed and reset higher, adjacent to the original position. It is also possible that the stone was left in place as found and the rebar was set next to the stone, though this possibility leaves unexplained the variation of depth of the stone as found and as reported.

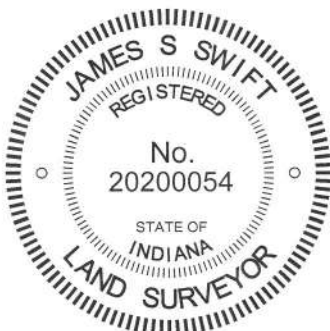
Given the uncertainties with the record and with the depth of the stone being in the fill material of the road and noting that the rebar was situated next to the stone near the northeast corner thereof, the rebar was held as marking the corner. The stone and rebar were both removed and a Harrison monument was set in the position of the vertical shaft of the rebar.

This corner was originally established in 1822.



- A - Mag nail set in S.E. side power pole, 2' a.g., 13.2'
- B - S.W. corner, brick mailbox #8993, 12.5'
- C - Mag nail set in W. side post, 2' a.g., 46.8'
- D - Boone County witness mark, flush, 40.0'

Boone County witness mark is a 3/8" diameter x 2' long rebar bearing a metal cap stamped "Boone County Witness Point."



*Kenneth E. Hedge*  
 Kenneth E. Hedge, County Surveyor

*James S. Swift*  
 James S. Swift, IN LS 20200054  
 March 27, 2015

Clinton Township

Section 16 T20N, R1E	Section 15 T20N, R1E
Section 21 T20N, R1E	Section 22 T20N, R1E



# SECTION CORNER RECORD

# NE 900-350

## BOONE COUNTY SURVEYOR'S OFFICE

State Plane grid coordinates NAD83 (2011):  
North: 1793344.04 East: 3142721.26 (U.S. survey feet)

Type of monument: Harrison, 4" disk 'Section Corner'  
Depth: 5 inches above adjacent ground

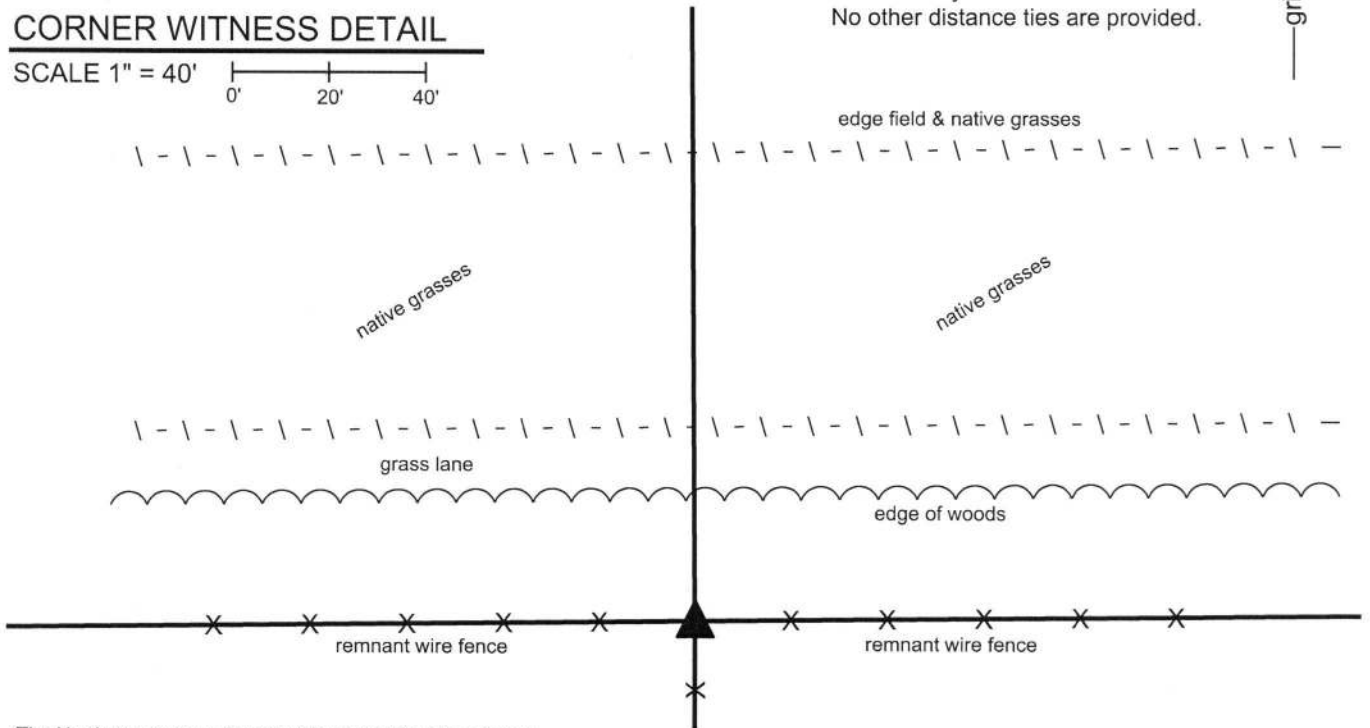
Indiana tie card references:  
IN02\_T20NR1E15\_76 IN02\_T20NR1E22\_04

The Harrison monument is situated at the north edge of a wood post, 11 inches north of the north edge of the post. The monument is also witnessed by an orange fiberglass lathe 'survey marker.'  
No other distance ties are provided.



### CORNER WITNESS DETAIL

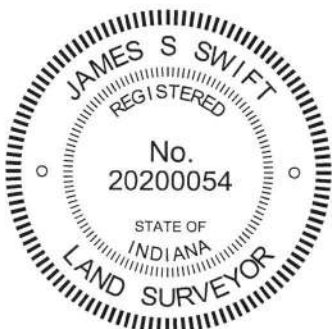
SCALE 1" = 40'  
0' 20' 40'



The Harrison monument was set in place of a stone found.

A BCS record of December 2, 1886 states, with respect to this corner, "Re-est. Set Rock Rock 16x12x9 +." No recent BCS tie cards were found referencing this corner.

Reconnaissance for this corner was performed in April, 2014. At that time, an ancient wood corner post was found at the intersection of old fences to the east, west and south. A 5/8 inch rebar bearing the cap "Dodge S0288" was found two feet north of the corner post. More thorough investigation and excavation was performed on April 11, 2018. It was observed that the old corner post had been removed and a newer post installed. The new post is situated slightly south of the position of the old post, as found in 2014. The rebar was still present, though leaning significantly. Excavation in the immediate vicinity of the post revealed the stone called for in the 1886 record at 5 inches deep. The stone was removed and measured and found to exactly match the dimensions called for in the 1886 record. As found, it been vertical, 16 inches tall by 12 inches N-S by 9 inches E-W. The stone had a distinct high point near the west edge of the rock. No specific marks were detected though it is noted that the stone has an extremely rough surface which may mask the mark. The stone appeared to be undisturbed as found and was determined to have been situated at the northeast edge of the original wood post, observed and located in 2014 but removed prior to 2018. A Harrison monument was set in place of the high point of the stone as originally found. The actual stone was embedded in the ground adjacent to and northeast of the Harrison. The stone no longer marks the corner, as the new monument was set in place of the high point of the stone as found. The Dodge rebar, removed during excavation, had been 0.4 foot west and 1.6 feet north of the corner, as established in place of the stone. This corner was originally established as a wood post in 1822.



*Kenneth E. Hedge*  
Kenneth E. Hedge, County Surveyor

*James S. Swift*  
James S. Swift, IN LS 20200054  
April 24, 2018

Clinton Township



# SECTION CORNER RECORD

NE 900-400

## BOONE COUNTY SURVEYOR'S OFFICE

State Plane grid coordinates NAD83 (CORS96):

North: 1793370.06 East: 3145330.98 (U.S. survey feet)

Type of monument: Harrison, 4" disk 'Section Corner'

Depth: six inches below adjacent gravel road surface

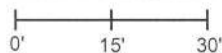
Indiana tie card references:

IN02\_T20NR1E15\_80 IN02\_T20NR1E14\_72

IN02\_T20NR1E22\_08 IN02\_T20NR1E23\_00

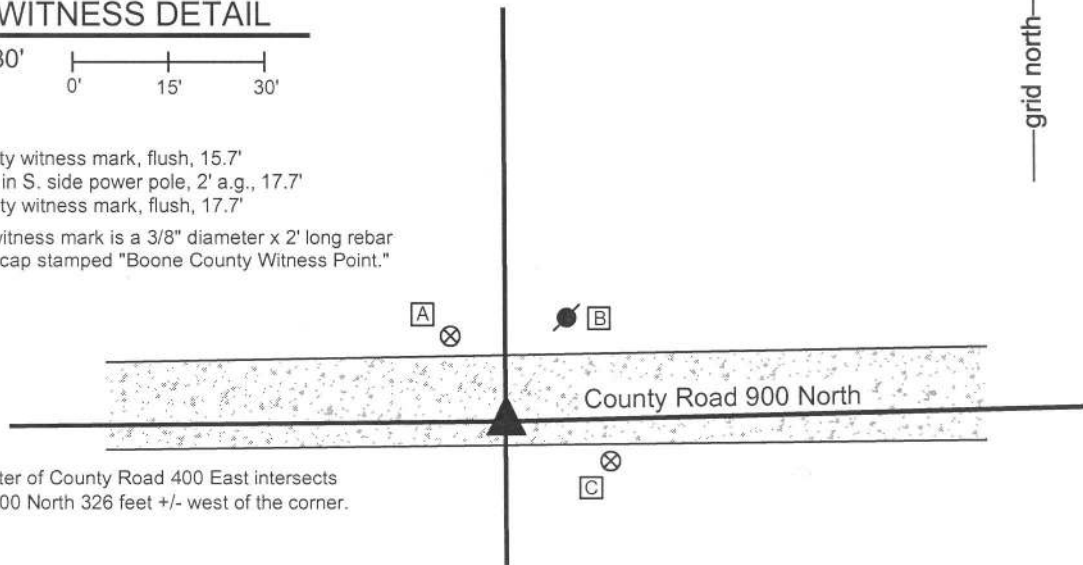
### CORNER WITNESS DETAIL

SCALE 1" = 30'



- A - Boone County witness mark, flush, 15.7'
- B - Mag nail set in S. side power pole, 2' a.g., 17.7'
- C - Boone County witness mark, flush, 17.7'

Boone County witness mark is a 3/8" diameter x 2' long rebar bearing a metal cap stamped "Boone County Witness Point."

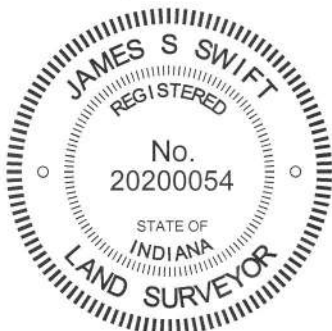


Note: The center of County Road 400 East intersects County Road 900 North 326 feet +/- west of the corner.

The Harrison monument was set in place of a stone found.

A BCS record of December 15, 1882 states, with respect to this corner, "Reestablished - Rock 18x11x8" A BCS tie card dated June 3, 1975 states "No Stone Found - Set Rod."

This corner was excavated on June 11, 2014. Prior to excavation, a 5/8 inch diameter rebar with a red plastic cap stamped "witness point" was found at 1 inch below the surface of the gravel road. The source of this monument is not known and it is not believed to be the same monument referred to as a 'rod' on the 1975 tie card. No reference points remain from the 1975 witness ties. Excavation revealed the stone described in the 1882 record at 8 inches deep, south and west of the rebar. As found, the stone appeared to be leaned to the west. Based on observations of the orientation of stones found at other corners throughout the county, it is expected that a stone set by the County Surveyor in 1882 would have been set vertically. This stone appeared to have been displaced from its vertical orientation, presumably by road grading equipment and partially leaned to the west. A distinct etched "+" mark was visible towards the west side of the stone as found. The stone was stood up in a vertical orientation, leaving the base of the stone in the same position as originally found, embedded in the clay layer below the road. With the stone stood up, the etched "+" mark was on the top of the rock and the rock measured 18 inches tall by 11 inches N-W by 8 inches E-W. As stood vertically, the top of the stone was approximately 4 inches deep and it appears that the stone would have protruded 3 to 4 inches out of the clay into the base of the road bed, with the bottom 14 to 15 inches of the stone embedded in the clay. The stone was situated towards the south edge of the road. This position fit very well with visual observations of the center of the road to the east and west. It is noted that the 1975 tie card shows the set 'rod' as being at 15.5 feet south of the post on the north side of the road. If the rebar found prior to excavation was in the same place as the rod called for in 1975, then the stone, being 1 foot south of the rebar, would have been situated at approximately 16.5 feet (1 rod) south of the post. It has been observed at other corners that the found stone or other ancient monument is often situated at 1 rod from an adjacent corner post. Both the rebar and the stone were removed and a Harrison monument was set in the position of the etched "+" on the top of the rock, as stood in a vertical orientation. The rebar had been approximately 1 foot north and 0.4 foot east of this point. This corner was originally established as a wood post in 1822.



*Kenneth E. Hedge*  
 Kenneth E. Hedge, County Surveyor

*James S. Swift*  
 James S. Swift, IN LS 20200054  
 March 27, 2015

Clinton Township

Section 15 T20N, R1E	Section 14 T20N, R1E
Section 22 T20N, R1E	Section 23 T20N, R1E

PHOTOGRAPHIC DOCUMENTATION

Date of photography: June 11, 2014

The stone as originally found, leaned substantially toward the west.



View from the northeast showing the stone stood vertically in the position believed most likely prior to it being leaned toward the west.



View from above and north, showing the stone vertical and washed. Note the etched + on top.



View from the west, looking across the stone and east along County Road 900 North.



View from the south, showing the stone vertical and washed.



For details and documentation, refer to related sheet "Section Corner Record."