

# SECTION CORNER RECORD

NE 200-900

## BOONE COUNTY SURVEYOR'S OFFICE

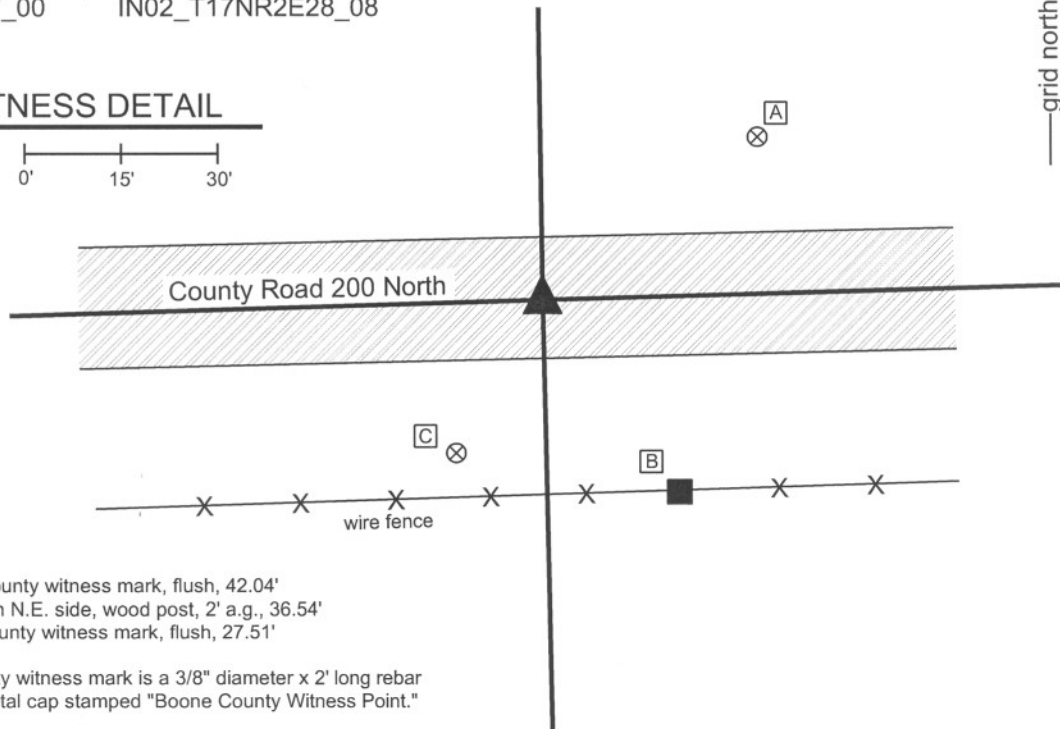
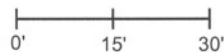
State Plane grid coordinates NAD83 (NSRS 2007):  
 North: 1757107.36 East: 3172348.82 (U.S. survey feet)

Type of monument: Harrison, 4" disk 'Section Corner'  
 Depth: One inch below adjacent road surface

Indiana tie card references:  
 IN02\_T19NR2E21\_80 IN02\_T22NR2E22\_72  
 IN02\_T17NR2E27\_00 IN02\_T17NR2E28\_08

### CORNER WITNESS DETAIL

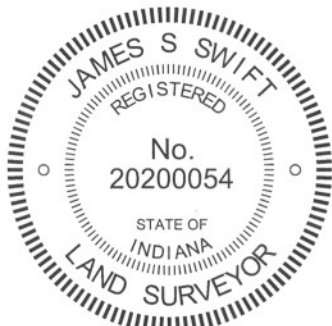
SCALE 1" = 30'



- A - Boone County witness mark, flush, 42.04'
- B - Mag set in N.E. side, wood post, 2' a.g., 36.54'
- C - Boone county witness mark, flush, 27.51'

Boone County witness mark is a 3/8" diameter x 2' long rebar bearing a metal cap stamped "Boone County Witness Point."

The harrison monument was set over a stone found.  
 A BCS of August 10-13, 1854 states "Reestablished. Set Rock 12 by 16 in. There are no bearing trees." A BCS tie card dated July 11, 1978 states "No stone found." A survey by the Schneider Corporation, dated December 22, 2005, certified by Carolina L. Candler, states "Stone found 0.6' below surface with 5/8" rebar beside (mag nail found 1.1' S, 1.2' E of stone 0.2' below surface) No B.C.S Ref. ties."  
 This corner was excavated on September 7, 2010. Prior to excavation an aluminum disk stamped with the name Schneider Corp. was found at the surface in the northwest corner of a 2 foot by 2 foot area of patched asphalt. Excavation revealed that the aluminum disk was placed upon a metal pin approximately 7 inches long. A stone was found at 7 inches deep, directly below the metal pin. The stone has a distinguishable marks on the top, which may be marks from a road grader or may be purposely etched. With 9 inches exposed the stone measures 8 inches E-W by 12 inches N-S, fully embedded in the clay layer below the road, with approximately 5 inches of the stone protruding into the bottom of the road bed. The stone was left undisturbed below 8 inches from the top and the full height of the stone was not measured. Hence, the stone was not solidly confirmed as being the record stone from 1854. It is noted that the N-S dimension does match the 1854 record and that BCS records prior to 1860 tend to note only two dimensions on a stone, typically the height and the largest horizontal dimension. The stone was held as marking the corner. A harrison monument was broken off at 6 inches tall and set directly over the stone, in the position of the disk found prior to excavation. The top of the stone was encased in concrete along with the harrison monument.  
 This corner was originally established as a wood post in July, 1821.



*Kenneth E. Hedge*  
 Kenneth E. Hedge, County Surveyor

*James S. Swift*  
 James S. Swift, IN LS 20200054  
 July 25, 2011

Marion Twp

Section 21 T19N, R2E	Section 22 T19N, R2E
-------------------------	-------------------------

Union Twp

Section 28 T19N, R2E	Section 27 T19N, R2E
-------------------------	-------------------------

PHOTOGRAPHIC DOCUMENTATION  
Date of photography: September 7, 2010

View of the stone as first exposed.



View of the stone partially exposed.



View from the east, looking across the stone and west along County Road 100 North, across U.S. 421



View of the stone partially exposed.



View of the stone from above, immediately prior to the top being encased in concrete.



For details and documentation, refer to related sheet "Section Corner Record."

# SECTION CORNER RECORD

NE-200-950

## BOONE COUNTY SURVEYOR'S OFFICE

State Plane grid coordinates NAD83 (NSRS 2007):  
North: 1757178.70 East: 3175007.10 (U.S. survey feet)

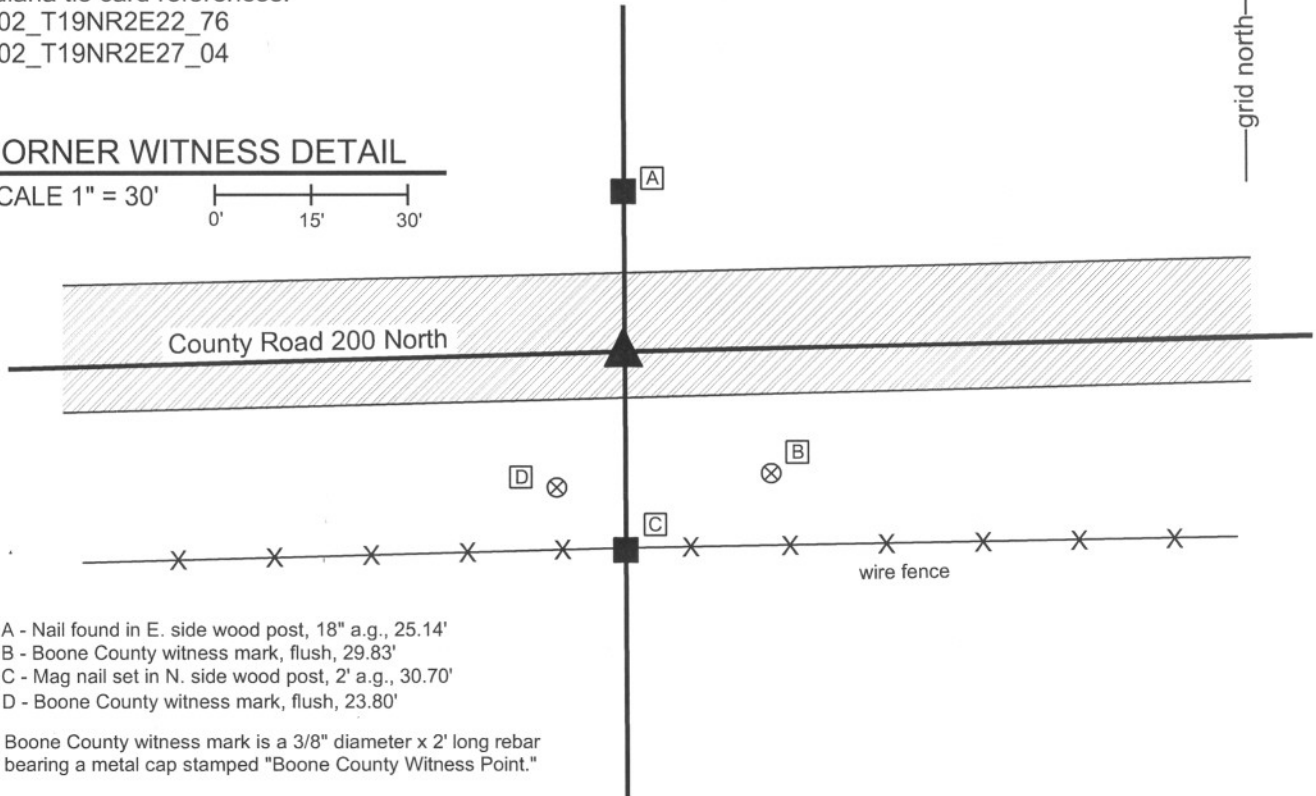
Type of monument: Harrison, 4" disk 'Section Corner'  
Depth: One inch below adjacent road surface

Indiana tie card references:  
IN02\_T19NR2E22\_76  
IN02\_T19NR2E27\_04



### CORNER WITNESS DETAIL

SCALE 1" = 30'



- A - Nail found in E. side wood post, 18" a.g., 25.14'
- B - Boone County witness mark, flush, 29.83'
- C - Mag nail set in N. side wood post, 2' a.g., 30.70'
- D - Boone County witness mark, flush, 23.80'

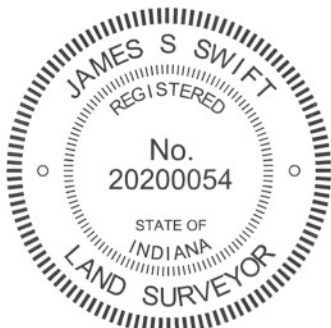
Boone County witness mark is a 3/8" diameter x 2' long rebar bearing a metal cap stamped "Boone County Witness Point."

The harrison monument was set in place of a rebar found.

A BCS tie card dated July 11, 1974 states "Lg. stone found almost on surface." A BCS record of August 3, 1852 shows the corner but does not give a description.

This corner was excavated on August 26, 2010. Prior to excavation, a mag nail was found in the road 1 inch deep. Excavation revealed a 1/2 inch diameter rebar at 6 inches deep, slightly southeast of the mag nail. Excavation of an area extending 1.5 feet South, 4.5 feet North, 2 feet East and 2 feet West of the nail and rebar revealed no other evidence found. The position of the found rebar at the southerly extension of a fence to the north fits with the graphic representation of the corner shown on the 1974 tie card. However, the one remaining distance tie from the 1974 tie card does not work with the found monuments. Incorrect distance ties shown on tie cards from 1974 have been found and confirmed at several other corners. The presence of the nail and rebar, the lack of any other found evidence, and the correlation of the position of the rebar with the graphical representation on the tie card were accepted as better evidence of the corner than a single, possibly incorrect, distance tie. It has been observed at other corners that the term "stone found" on a tie card from the summer of 1974 generally indicates that a stone was found, removed and replaced with a metal monument, being either a railroad rail on end or a 1/2 inch rebar. The presence of the rebar is consistent with this observation. The position of the rebar was held as marking the corner and the harrison monument was set in its place.

This corner was originally established as a wood post in July, 1821.



*Kenneth E. Hedge*  
Kenneth E. Hedge, County Surveyor

*James S. Swift*  
James S. Swift, IN LS 20200054  
July 25, 2011

Marion  
Twp

Section 22  
T19N, R2E

Union  
Twp

Section 27  
T19N, R2E

# SECTION CORNER RECORD

# NE-200-1000

## BOONE COUNTY SURVEYOR'S OFFICE

State Plane grid coordinates NAD83 (NSRS 2007):

North: 1757236.74 East: 3177675.57 (U.S. survey feet)

Type of monument: Harrison, 4" disk 'Section Corner'

Depth: One inch below adjacent road surface

Indiana tie card references:

IN02\_T19NR2E22\_80

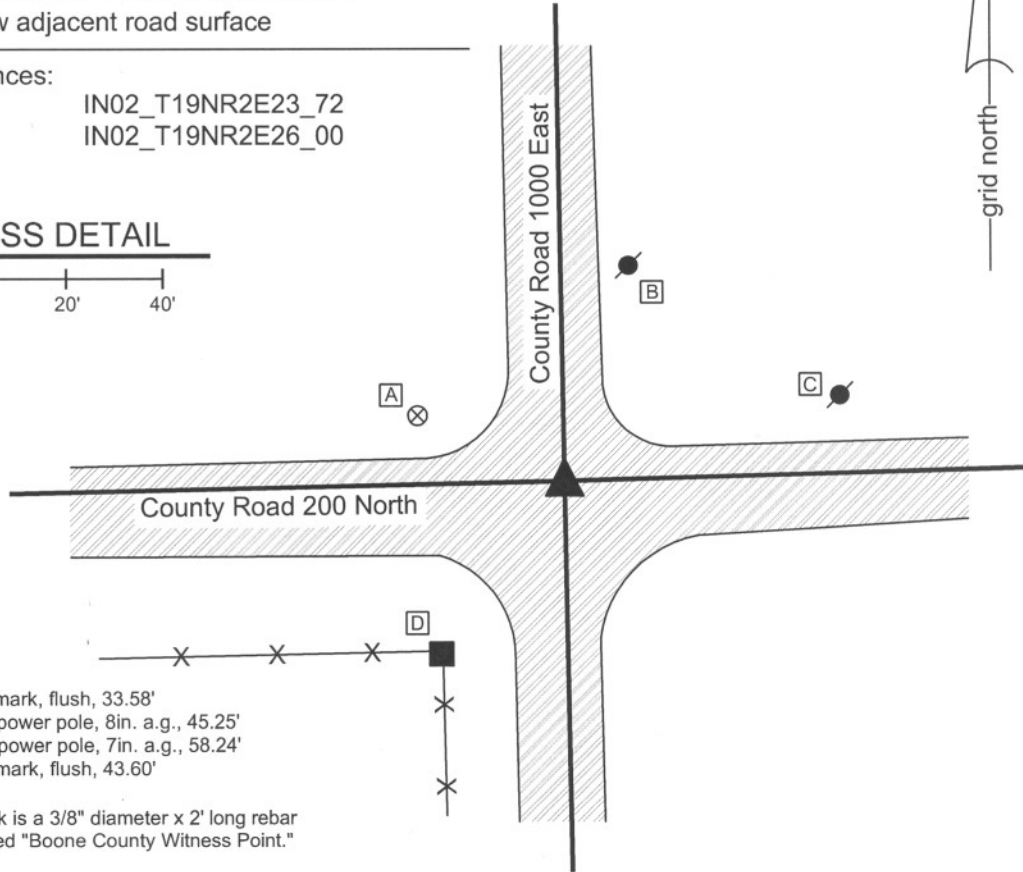
IN02\_T19NR2E23\_72

IN02\_T19NR2E27\_08

IN02\_T19NR2E26\_00

### CORNER WITNESS DETAIL

SCALE 1" = 40'



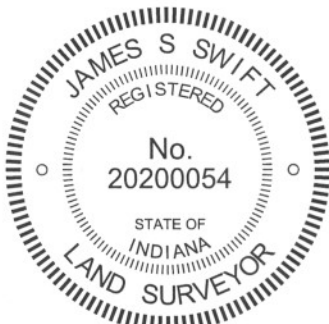
- A - Boone County witness mark, flush, 33.58'
- B - Nail found in S.W. side power pole, 8in. a.g., 45.25'
- C - Nail found in S.W. side power pole, 7in. a.g., 58.24'
- D - Boone County witness mark, flush, 43.60'

Boone County witness mark is a 3/8" diameter x 2' long rebar bearing a metal cap stamped "Boone County Witness Point."

The Harrison monument was set in place of a rebar found.

A BCS tie card dated July 11, 1974 states "found stone 16" deep w/ PK nail." No specific descriptions of this corner were found in the old BCS Surveyor's Record.

This corner was excavated on July 8, 2010. Prior to excavation, a mag nail was visible at the surface. Excavation revealed four additional monuments in three separate positions. A 5/8 inch rebar and iron pipe were found approximately below the mag nail. Another 5/8 inch rebar was found to the north and west. A 1/2 inch rebar was also found northeast of the mag nail. No stone was found and the preponderance of evidence indicates that the 1/2 inch rebar represents the position of the stone found in 1974. It has been observed at other corners that the term "stone found" on a tie card from the summer of 1974 generally indicates that a stone was found, removed and replaced with a metal monument, being either a railroad rail on end or a 1/2 inch rebar. The presence of the rebar is consistent with this observation. The 1/2 inch rebar fits with the distance ties shown on the 1974 tie card, whereas none of the other monuments fit with those distance ties. Furthermore, excavation revealed that the top 14 inches of the road bed are either asphalt (top two inches) or recent fill material (2 - 14 inches deep.) The two 5/8 inch rebars and the pipe were all well within the recent fill material, but the 1/2 inch rebar was at 14 inches, with the top of the being at the top of the older fill material. The 1/2 inch rebar was accepted as the best available evidence of the position of the stone found in 1974 and was held as marking the corner. A Harrison monument was set in its place. The mag nail, pipe and one rebar (all removed during excavation) had been 1.7 feet south and 0.6 foot west of the corner. The other 5/8 inch rebar had been 0.6 foot south and 1.9 feet west of the corner. This corner was originally established as a wood post in July, 1821.



*Kenneth E. Hedge*  
Kenneth E. Hedge, County Surveyor

*James S. Swift*  
James S. Swift, IN LS 20200054  
July 25, 2011

Marion Twp

Section 22 T19N, R2E	Section 23 T19N, R2E
Section 27 T19N, R2E	Section 26 T19N, R2E

Union Twp

# SECTION CORNER RECORD

NE 250-900

## BOONE COUNTY SURVEYOR'S OFFICE

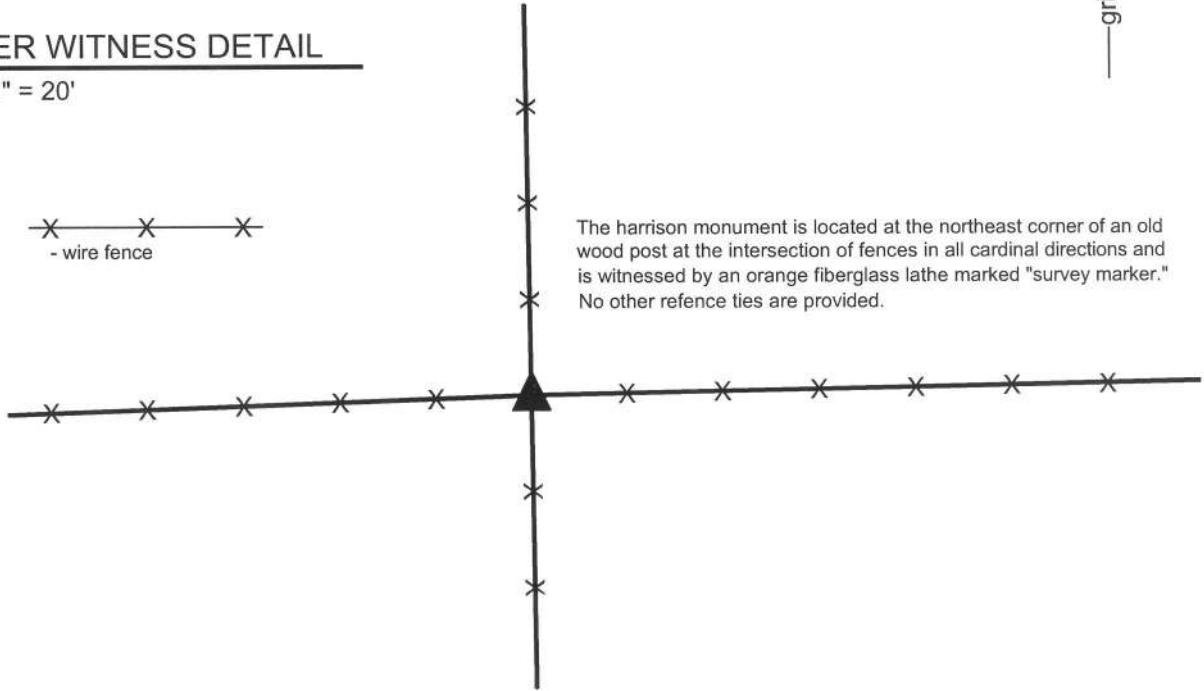
State Plane grid coordinates NAD83 (CORS96):  
North: 1759774.92 East: 3172316.32 (U.S. survey feet)

Type of monument: Harrison, 4" disk 'Section Corner'  
Depth: Four inches above adjacent ground

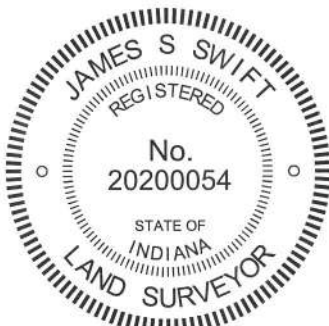
Indiana tie card references:  
IN02\_T19NR2E21\_44  
IN02\_T19NR2E22\_36

### CORNER WITNESS DETAIL

SCALE 1" = 20'



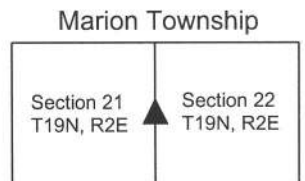
The harrison monument was set in place of a stone found.  
 A BCS record of 10-13, 1857 states "Reestablished, set a Rock, 16x22 in." No recent BCS tie cards were found referencing this corner.  
 Excavation at this corner took place on October 14, 2011. Prior to excavation a wood corner post was found at the intersection of old fences to the north, south, east and west. An iron pipe was found along the north side of the post. Excavation revealed a stone found at 4 inches deep adjacent to the northeast corner of the wood post. The stone measured 22 inches E-W by 14 inches tall, thin in the N-S dimension, oriented East-West with a distinct high point at the top of the E-W ridge along the top of the stone. The stone did not appear to be acting as a brace rock for the post. The stone matched the record dimension of 22 inches, was close to the record dimension of 16 inches and had similar characteristics to stones found marking other corners throughout the county. The stone was accepted as being the rock described in the 1857 record and was held as marking the corner. The stone and iron pipe were both removed and a harrison monument was set in a column of concrete within a vertical section of 12 inch diameter plastic storm pipe. The harrison was set in the same position as the high point of the distinct E-W ridge on the top of the stone. No source documentation was found for the iron pipe.  
 This corner was originally set as a wood post in July, 1821.



*Kenneth E. Hedge*  
 Kenneth E. Hedge, County Surveyor

*James S. Swift*  
 James S. Swift, IN LS 20200054

April 11, 2013



PHOTOGRAPHIC DOCUMENTATION

Date of photography: October 12-14, 2011

The post prior to excavation.



The stone exposed at the base of the post.



The post and iron pipe. The small rebar is in the position at which the harrison was subsequently set. The stone is on the ground to the left.



For details and documentation, refer to related sheet "Section Corner Record."

# SECTION CORNER RECORD

## BOONE COUNTY SURVEYOR'S OFFICE

NE 250-1000

State Plane grid coordinates NAD83 (CORS96):

North: 1759876.56 East: 3177631.40 (U.S. survey feet)

Type of monument: Harrison, 4" disk 'Section Corner'

Depth: flush with adjacent road surface

Indiana tie card references:

IN02\_T19NR2E22\_44

IN02\_T19NR2E23\_36

### CORNER WITNESS DETAIL

SCALE 1" = 40'

- A - Boone County witness mark, flush, 27.40'
- B - Boone County witness mark, flush, 23.20'
- C - Boone County witness mark, flush, 17.94'

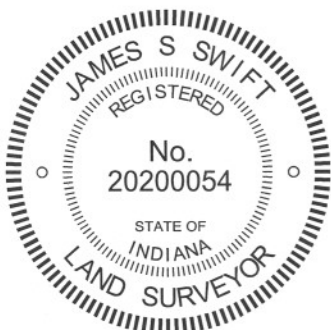
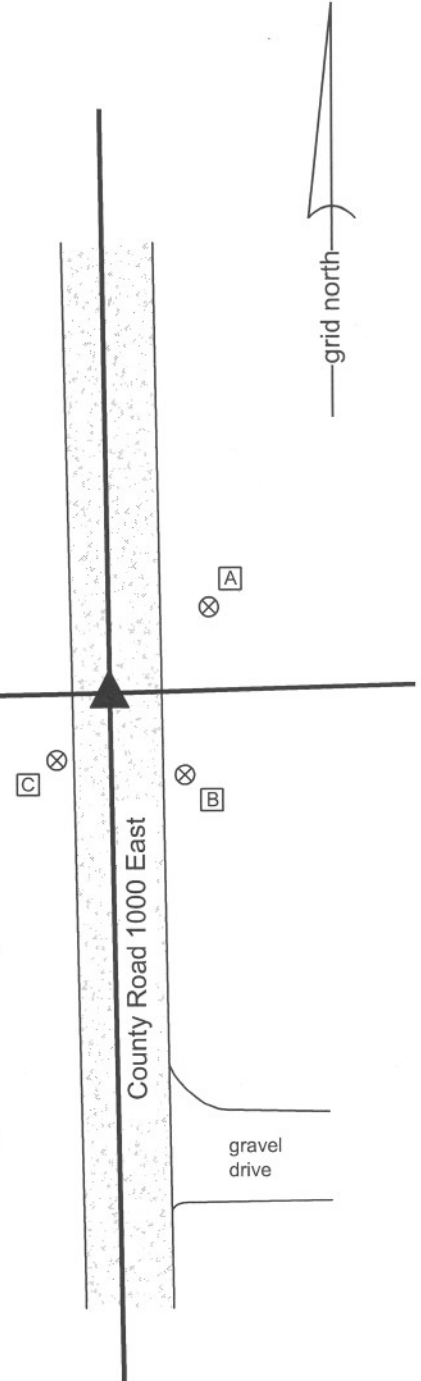
Boone County witness mark is a 3/8" diameter x 2' long rebar bearing a metal cap stamped "Boone County Witness Point."

The harrison monument was set in place of a stone found.

No specific descriptions of this corner were found in the BCS Surveyor's Record, though the corner is noted as the terminal point for measurements in 1835, 1836 and 1862. A BCS tie card dated August 6, 1874 states "stone found."

This corner was excavated on September 21, 2011. Prior to excavation at 5/8 inch diameter rebar with a red plastic cap (markings not distinguishable) was found 7 inches deep in a hole chiseled in the asphalt. Excavation revealed a stone found at 15 inches deep, 0.4 foot south and 0.7' west of the rebar. The stone was 7 inches N-S by 7 inches E-W by 6 inches tall, fully embedded in the clay layer below the road with the top of the stone at the top of the clay layer and bottom of the base of the road. No other evidence was found. The stone is smaller than many corner stones but was found to be fully embedded in the clay layer and did not appear to be part of the road bed. The rebar is not typical of a monument found associated with 1974 BCS tie cards. Based on evidence found during excavation at other corners in this area, 1974 appears to be a transitional year with respect to monuments set by the Surveyor's Office, with railroad rails set in the spring and early summer and 1/2 inch diameter rebars set in the later summer. Unlike previous years, the field crews in 1974 did not uniformly remove stones if found. Some stones were removed while some were left in place, but the difference was not always documented on the field notes or tie cards. The capped 5/8 inch diameter rebar definitely does not fit the type of monumentation expected from the 1974 field crew. It is accepted as most likely that the same stone found during the current excavation was found at that time and left in place. No ties remain from the 1974 notes. The stone was held as marking the corner and was replaced with a harrison monument. The found rebar was removed during excavation.

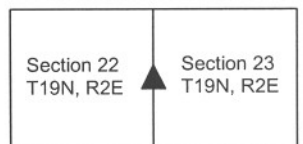
This corner was originally established as a wood post in July, 1821.



*Kenneth E. Hedge*  
 Kenneth E. Hedge, County Surveyor

*James S. Swift*  
 James S. Swift, IN LS 20200054  
 March 1, 2012

Marion Township



PHOTOGRAPHIC DOCUMENTATION

Date of photography: September 21, 2011

View of the stone as first exposed.



The stone removed from the road.



For details and documentation, refer to related sheet "Section Corner Record."



# SECTION CORNER RECORD

NE 300-900

## BOONE COUNTY SURVEYOR'S OFFICE

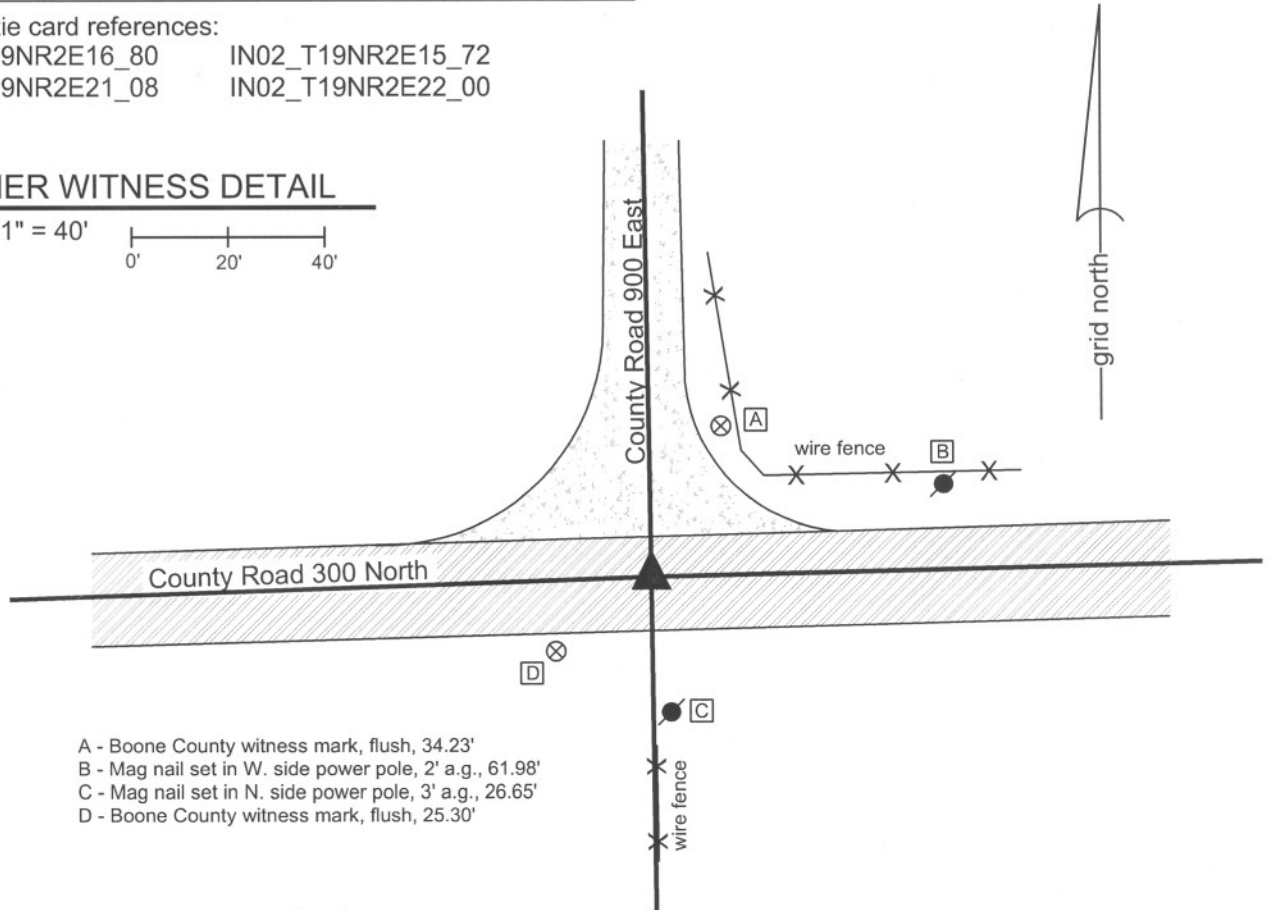
State Plane grid coordinates NAD83 (NSRS 2007):  
 North: 1762420.07 East: 3172276.24 (U.S. survey feet)

Type of monument: Harrison, 4" disk 'Section Corner'  
 Depth: two inches below adjacent road surface

Indiana tie card references:  
 IN02\_T19NR2E16\_80      IN02\_T19NR2E15\_72  
 IN02\_T19NR2E21\_08      IN02\_T19NR2E22\_00

### CORNER WITNESS DETAIL

SCALE 1" = 40'

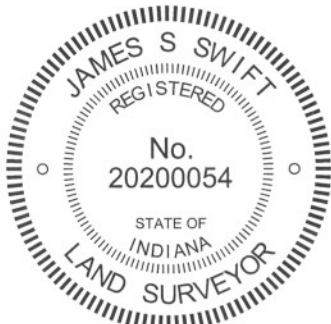


- A - Boone County witness mark, flush, 34.23'
- B - Mag nail set in W. side power pole, 2' a.g., 61.98'
- C - Mag nail set in N. side power pole, 3' a.g., 26.65'
- D - Boone County witness mark, flush, 25.30'

The Harrison monument was set over a stone found.

A BCS record of April 23, 1868 states "Reestablished by producing or extending the corrected line A, H, g and from a marked tree on the line G to F and some appearance of roots of one tree. Set a Rock 21.12 by 9 in. marked +." Field notes from an unknown source dated July 1980 state "No stone set I.P." This corner was excavated on September 9, 2010. Prior to excavation a mag nail was visible approximately 1 inch below the surrounding asphalt. A one inch diameter rebar, 13 inches long, was found directly below the mag nail. Fragments of a wood stake were found at 12 inches deep, several feet north of the rebar. The record stone was found below the wood stake. The stone is vertical, fully embedded in the clay with the top of the stone at the top of the clay layer below the road. The stone measures 12 inches E-W by 9 inches N-S with 15 inches exposed. An etched + is clearly visible on the top, of the stone. The rock does not have a uniform shape on the top and the etched "+" is not at the high point, but is at the approximate of the overall top of the stone. The high point of the stone, at the east edge of the top is 16 inches deep and the etched "+" is at 18 inches deep, as the top slopes down towards the west. The stone was left in place and the Harrison monument was set directly over the etched "+". The mag nail and rebar, both removed during excavation, had been 3.9 feet south and 0.7 foot east of the etched "+" on the stone.

This corner was originally established as a wood post in July, 1821.



*Kenneth E. Hedge*  
 Kenneth E. Hedge, County Surveyor

*James S. Swift*  
 James S. Swift, IN LS 20200054  
 July 25, 2011

Marion Twp

Section 16 T19N, R2E	Section 15 T19N, R2E
Section 21 T19N, R2E	Section 22 T19N, R2E

PHOTOGRAPHIC DOCUMENTATION

Date of photography: September 2, 2010

Some fragments of the wood stake above the stone.



The stone as first exposed.



The stone being exposed. Further pictures are not available due to camera failure during excavation.



For details and documentation, refer to related sheet "Section Corner Record."

# SECTION CORNER RECORD

NE 300-950

## BOONE COUNTY SURVEYOR'S OFFICE

State Plane grid coordinates NAD83 (CORS96):

North: 1762481.05 East: 3174932.50 (U.S. survey feet)

Type of monument: Harrison, 4" disk 'Section Corner'

Depth: One inch below adjacent road surface

Indiana tie card references:

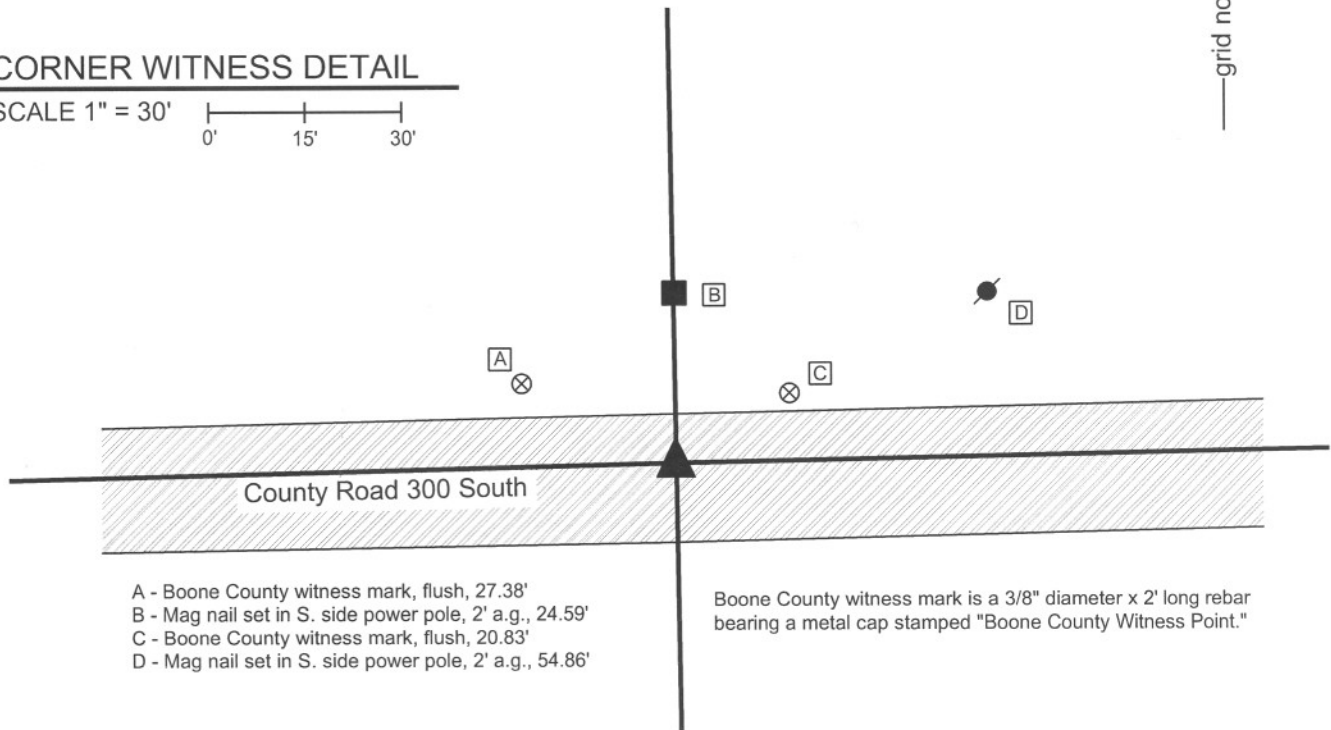
IN02\_T19NR2E15\_76

IN02\_T19NR2E22\_04



### CORNER WITNESS DETAIL

SCALE 1" = 30'



- A - Boone County witness mark, flush, 27.38'
- B - Mag nail set in S. side power pole, 2' a.g., 24.59'
- C - Boone County witness mark, flush, 20.83'
- D - Mag nail set in S. side power pole, 2' a.g., 54.86'

Boone County witness mark is a 3/8" diameter x 2' long rebar bearing a metal cap stamped "Boone County Witness Point."

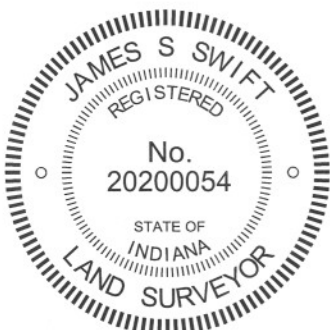
The Harrison monument was set in place of a rebar found.

No specific descriptions of this corner were found in the BCS Surveyor's Record. The corner is mentioned as the terminal point for measurements in a record from 1868. No recent BCS tie cards were found referencing this corner.

This corner was excavated on October 26, 2011. Prior to excavation a 5/8 inch diameter rebar was found at 2 inches deep in a hole in the asphalt. Excavation revealed no further evidence of the corner in an area of excavation extended 2 feet north, 4 feet east, 4.5 feet south and 2.5 feet west of the rebar. The clay layer below the road begins at 18 to 20 inches deep. Excavation was performed to a minimum of 22 inches.

The rebar fits with local evidence of the corner in the form of being in the east west road at the southerly extension of an old north-south fence. The rebar was slightly north of the road, but no better evidence of the corner was found closer to the center of the road. The rebar was accepted as the best available evidence of the corner. The rebar was removed and replaced with a Harrison monument in the same position.

This corner was originally established as a wood post in July, 1821.



*Kenneth E. Hedge*  
Kenneth E. Hedge, County Surveyor

*James S. Swift*  
James S. Swift, IN LS 20200054  
March 1, 2012

Marion Twp

Section 15  
T19N, R2E

Section 22  
T19N, R2E

# SECTION CORNER RECORD

NE 300-1000

## BOONE COUNTY SURVEYOR'S OFFICE

State Plane grid coordinates NAD83 (2011):

North: 1762530.92 East: 3177594.07 (U.S. survey feet)

Type of monument: Harrison, 4" disk 'Section Corner'

Depth: flush with adjacent road surface

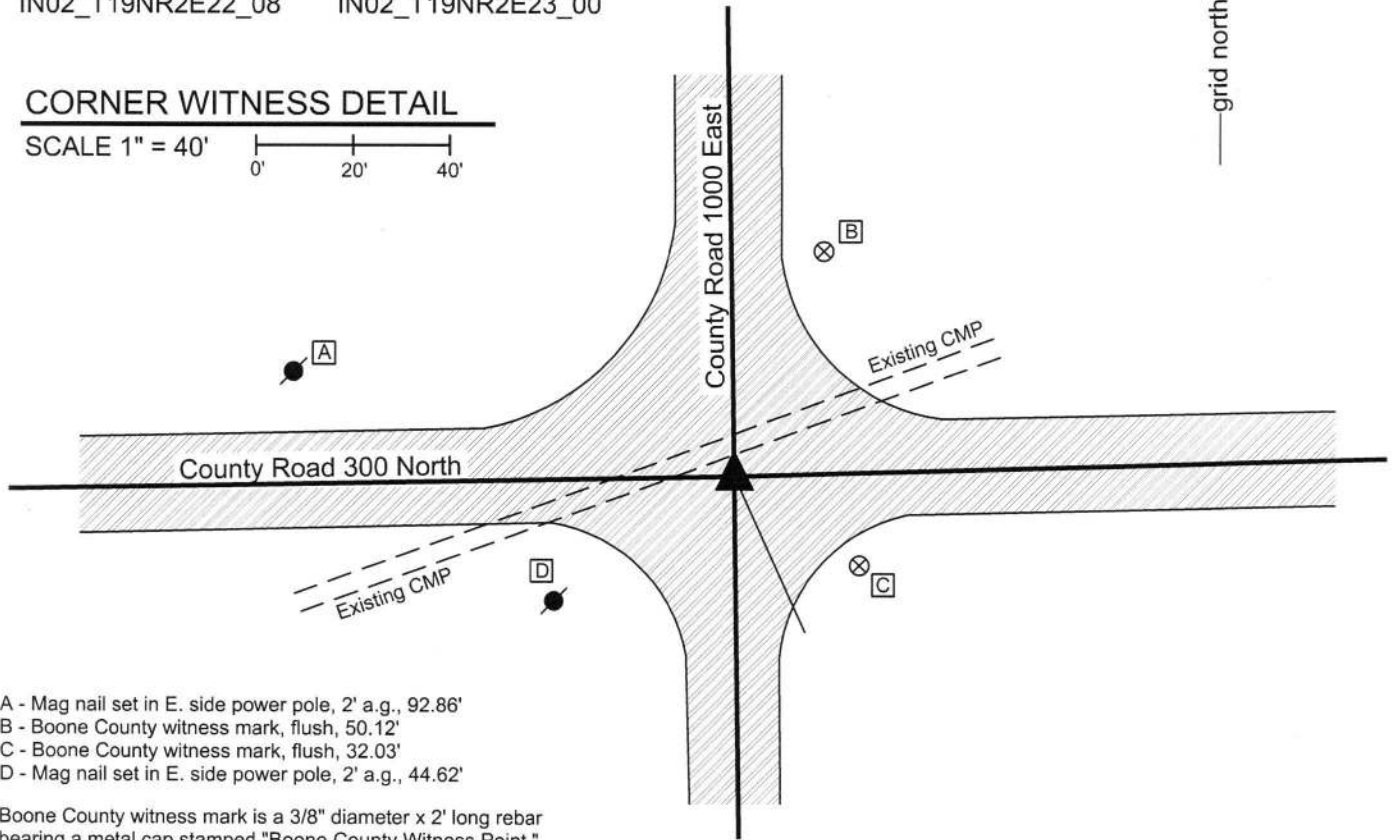
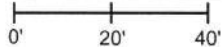
Indiana tie card references:

IN02\_T19NR2E15\_80 IN02\_T19NR2E14\_72

IN02\_T19NR2E22\_08 IN02\_T19NR2E23\_00

### CORNER WITNESS DETAIL

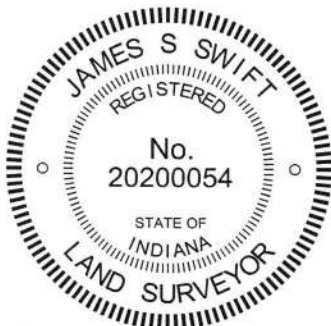
SCALE 1" = 40'



- A - Mag nail set in E. side power pole, 2' a.g., 92.86'
- B - Boone County witness mark, flush, 50.12'
- C - Boone County witness mark, flush, 32.03'
- D - Mag nail set in E. side power pole, 2' a.g., 44.62'

Boone County witness mark is a 3/8" diameter x 2' long rebar bearing a metal cap stamped "Boone County Witness Point."

The Harrison monument was set in the same position as a Harrison monument previously set. This corner is dominated by the presence of a large culvert pipe crossing the intersection from the southwest to the northeast quadrant, the installation of which would have destroyed any ancient evidence or monumentation at the actual corner. A witness stone described in an 1862 record as being southeast of the corner was not found. In 2011, a P.K. nail found at the center of the intersection was replaced with a Harrison Monument in the same position. Subsequently, the culvert pipe was replaced by the Boone County Highway Department, during which process the Harrison monument was removed. This monument was replaced with another Harrison monument in October, 2015.



*Kenneth E. Hedge*  
Kenneth E. Hedge, County Surveyor

*James S. Swift*  
James S. Swift, IN LS 20200054  
March 23, 2017

Marion Township

Section 15 T19N, R2E	Section 14 T19N, R2E
Section 22 T19N, R2E	Section 23 T19N, R2E