

# SECTION CORNER RECORD

NW 200-200

## BOONE COUNTY SURVEYOR'S OFFICE

State Plane grid coordinates NAD83 (2011):

North: 1756124.54 East: 3114220.42 (U.S. survey feet)

Type of monument: Harrison, 4" disk 'Section Corner'

Depth: Two inches above adjacent ground

Indiana tie card references:

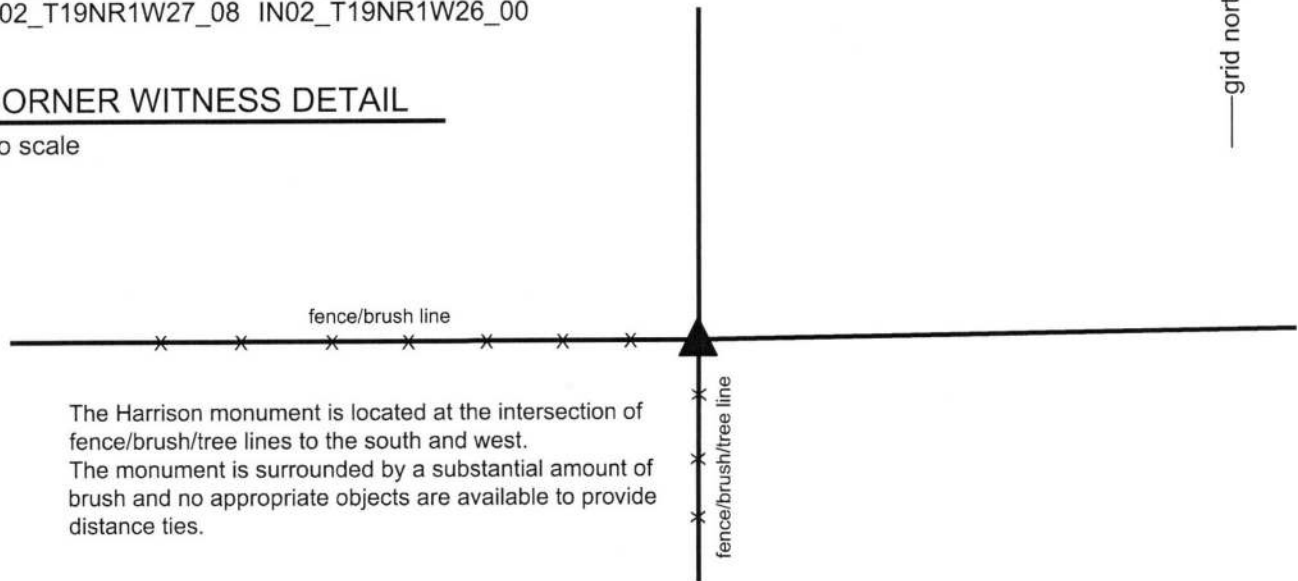
IN02\_T19NR1W22\_80 IN02\_T19NR1W23\_72

IN02\_T19NR1W27\_08 IN02\_T19NR1W26\_00



### CORNER WITNESS DETAIL

No scale



The Harrison monument is located at the intersection of fence/brush/tree lines to the south and west. The monument is surrounded by a substantial amount of brush and no appropriate objects are available to provide distance ties.

The Harrison monument was set over a stone found.

A BCS record dated June 19-20, 1882 states, with respect to this corner, "Section Corner to 26, 27, 22, 23 reestablished from O.B.Trees, stumps yet there, and set rock 16x16x14."

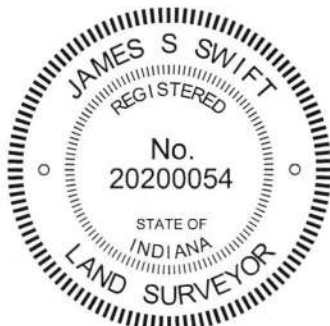
No recent BCS tie cards were found referencing this corner.

This corner was excavated and monumented on October 20, 2017. Prior to excavation a 5/8 inch rebar was found in the immediate vicinity of the corner. The rebar appeared to be substantially disturbed, leaning towards the north. No corner post was observed, but the position of the rebar fit well with the prolongation of standing fences to the south and west, as previously located. Excavation revealed a large stone found immediately east of the rebar. Most of the stone was exposed and the stone was determined to be 16 inches E-W by 8 inches N-S by 16 inches tall. The full height was measured on the south side. The stone had a distinct E-W ridge across the top with a discernable high point in the approximate center of the ridge.

The stone fit the characteristics of a corner stone, standing upright, oriented in cardinal directions and with an evident high point and it appeared in the field to have been purposely set to mark the corner. No specific markings were found on the stone, nor were any noted in the record. The dimensions of the stone matched two of the dimensions from the 1882 record, being 16 inches E-W by 16 inches tall. It is not known why the third dimension did not match the record. It is noted that in the discovery of other stones marking corners throughout the county, other instances have been noted wherein the found stone matched two of the three dimensions reported. No explanation is offered for this other than perhaps a scrivener's error in creating the record. All other characteristics of the stone indicated that it was intended to mark the corner and it was accepted as the best evidence of the original position of the corner. The rebar had been situated against the west end of the stone.

The stone was left in place. Most of the stone was encased in concrete and a Harrison monument was set directly above the high point of the E-W ridge across the top of the stone.

This corner was originally established as a wood post in 1829.



*Kenneth E. Hedge*  
 \_\_\_\_\_  
 Kenneth E. Hedge, County Surveyor

*James S. Swift*  
 \_\_\_\_\_  
 James S. Swift, IN LS 20200054  
 November 7, 2017

Center Township

Section 22 T19N, R1W	Section 23 T19N, R1W
Section 27 T19N, R1W	Section 26 T19N, R1W

# SECTION CORNER RECORD

NW 200-250

## BOONE COUNTY SURVEYOR'S OFFICE

State Plane grid coordinates NAD83 (2011):

North: 1756121.90 East: 3111555.20 (U.S. survey feet)

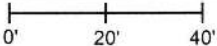
Type of monument: Harrison, 4" disk 'Section Corner'

Depth: six inches below adjacent gravel road surface

Indiana tie card references:

IN02\_T19NR1W22\_76 IN02\_T19NR1W27\_04

### CORNER WITNESS DETAIL

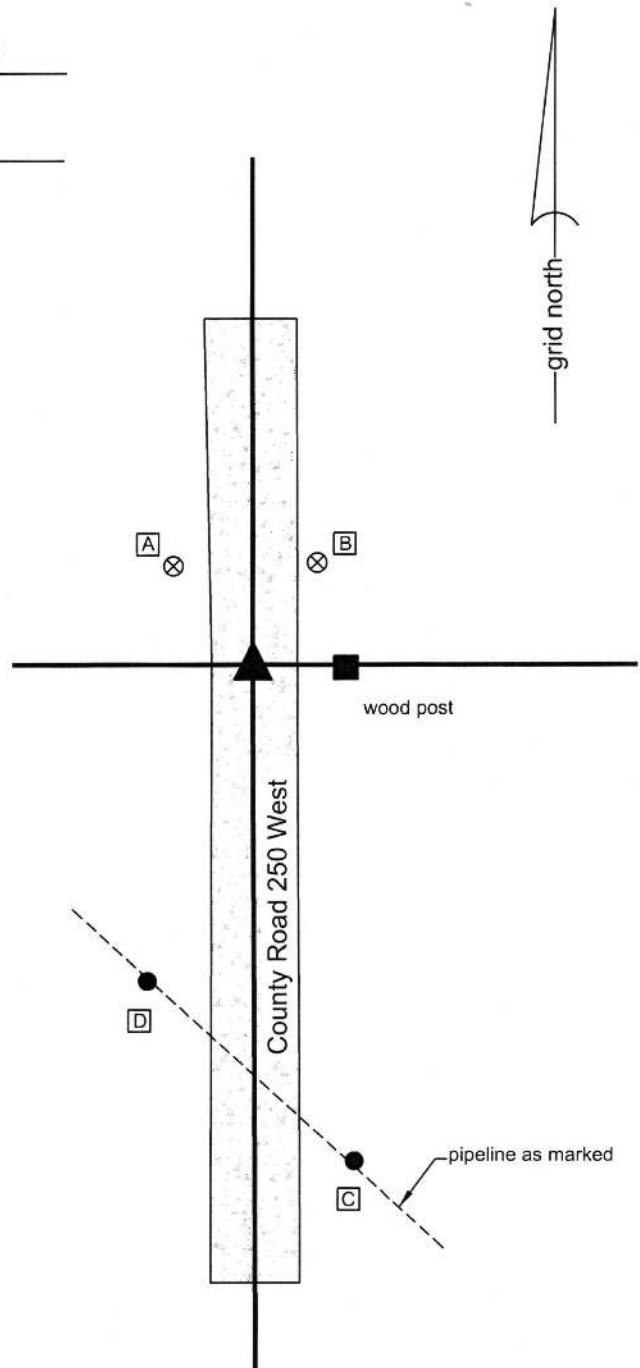
SCALE 1" = 40' 

- A - Boone County witness mark, flush, 26.2'
- B - Boone County witness mark, flush, 25.0'
- C - S.W. edge, round steel post, pipeline marker, 104.4'
- D - S.E. edge, round steel post, pipeline marker, 69.6'

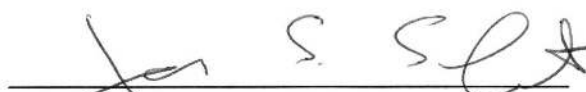
The Harrison monument was set in place of a stone found. A BCS record dated April 26-28, 1858 states, with respect to this corner, "Reestab by measurement. Set Rock 4x16." A BCS tie card with dates of both May 27, 1967 and May 3, 1974 shows the corner but makes no mention of a monument found or set. This corner was excavated on July 1, 2015. Prior to excavation, a 5/8 inch diameter rebar was found at the surface, bent at the top but not otherwise disturbed below. Excavation revealed a stone found near the surface of the road. The top of the stone was flat and horizontal, measuring approximately 6 inches N-S by 6 inches E-W. The rock was removed from the road bed and the full stone was measured to be 16 inches tall by 8 inches N-S by 12 inches E-W. The bottom of the road bed was found at 6 inches deep. As the stone had been originally found near the surface, it was concluded that the bottom 10 inches of the stone had been embedded in the clay layer below the road bed while the top 6 inches had been protruding into the road bed.

The height of the stone matches the 1858 record, but the other two dimension do not. The 1858 record is represented in two different volumes of the Boone County Surveyor's Record, the most recent of which was created in 1911. The original record from 1858 is not known to exist. Hence, it is not possible to confirm the dimensions of the stone as originally recorded. However, the characteristics of the stone, being vertical and embedded in the clay, match the characteristics of other stones found marking corners throughout the county. The position of the stone fits well with local evidence in the form of the existing north-south roadway and the fence post and field division to the east. The stone was held as marking the corner. A Harrison monument was set in the position of the center of the flat top of the rock, as originally found. The rebar, removed during excavation had been near the northwest edge of stone, specifically 0.4 foot west and 0.9 foot north of the final position marked by the Harrison monument.

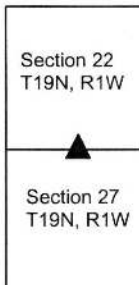
This corner was originally established as a wood post in 1829.



  
 Kenneth E. Hedge, County Surveyor

  
 James S. Swift, IN LS 20200054  
 March 24, 2016

Center Township



# SECTION CORNER RECORD

NW 200-300

## BOONE COUNTY SURVEYOR'S OFFICE

State Plane grid coordinates NAD83 (2011):

North: 1756120.19 East: 3108893.60 (U.S. survey feet)

Type of monument: Harrison, 4" disk 'Section Corner'

Depth: Two inches above adjacent ground

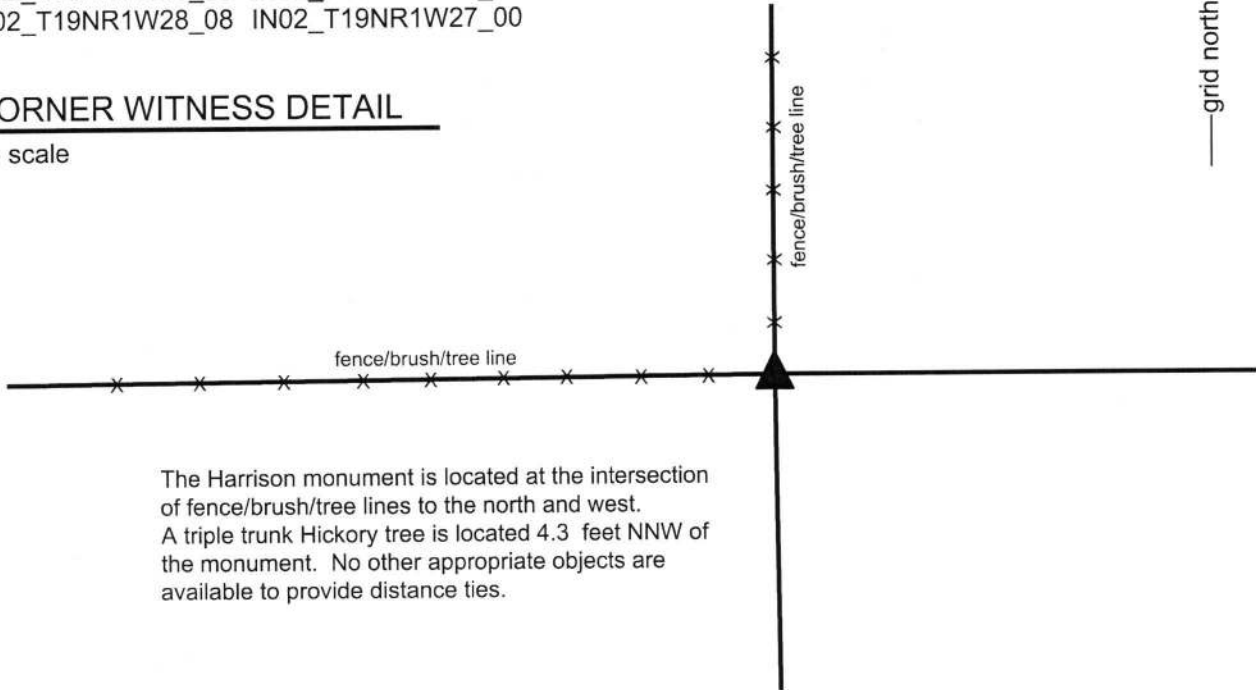
Indiana tie card references:

IN02\_T19NR1W21\_80 IN02\_T19NR1W22\_72

IN02\_T19NR1W28\_08 IN02\_T19NR1W27\_00

### CORNER WITNESS DETAIL

no scale



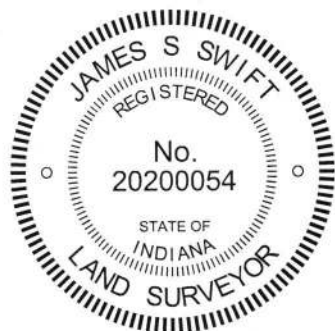
The Harrison monument is located at the intersection of fence/brush/tree lines to the north and west. A triple trunk Hickory tree is located 4.3 feet NNW of the monument. No other appropriate objects are available to provide distance ties.

The Harrison monument was set in place of a wood corner post found.

A BCS record dated May 13-14, 1884 states, with respect to this corner, "Reest'd from O.B.T. Set Flat Rock marked +." No recent BCS tie cards were found referencing this corner.

Excavation was performed at this corner on October 21, 2017. Prior to excavation, an ancient wood corner post was found with standing fences to the north and west and fencing cut-off toward the east. The position of the post fit well with the relative positions of proximate corners. Excavation around and in the vicinity of the post revealed several rocks found, none of which were particularly flat or had a discernable etched "+" mark. Hence, no rocks matching the 1884 record were found, nor were any rocks found which appeared to have been set as marking the corner. The post itself was accepted as providing the best available evidence of the original location of the corner. As found, the top of the post was not attached to the ground and was standing, albeit leaning substantially to the northwest, as supported by the attached fencing and brace posts. Excavation around the base of the post revealed that the old base must have rotted away as only small fragments of wood were found in the dirt below the post. The top of the post was pushed toward the northwest, but in so doing, the northerly brace was displaced and the post was left in an awkward position, suspended and leaning over the corner. The wire to the north was cut and the post was laid on the ground, adjacent to and northwest of its former position. A Harrison monument was set in the position of the bottom of the post, as originally found.

This corner was originally established as a wood post in 1829.



  
 Kenneth E. Hedge, County Surveyor

  
 James S. Swift, IN LS 20200054  
 November 7, 2017

Center Township

Section 21 T19N, R1W	Section 22 T19N, R1W
Section 28 T19N, R1W	Section 27 T19N, R1W

The table shows a 2x2 grid of sections. A triangle points to the intersection of Section 21 (top-left) and Section 28 (bottom-left).

# SECTION CORNER RECORD

# NW 250-200

## BOONE COUNTY SURVEYOR'S OFFICE

State Plane grid coordinates NAD83 (CORS96):

North: 1758777.24 East: 3114222.50 (U.S. survey feet)

Type of monument: Harrison, 4" disk 'Section Corner'

Depth: One inch below adjacent road surface

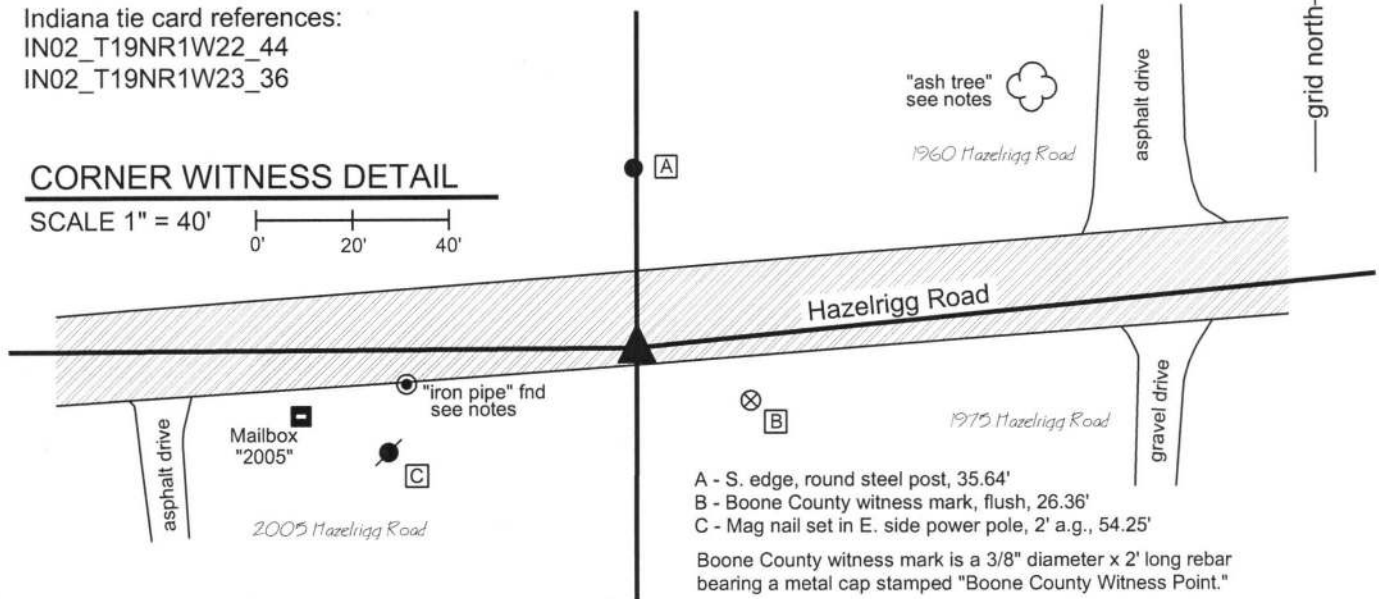
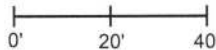
Indiana tie card references:

IN02\_T19NR1W22\_44

IN02\_T19NR1W23\_36

### CORNER WITNESS DETAIL

SCALE 1" = 40'



The harrison monument was set over a stone found.

A BCS record of September 14-17, 1857 states "Reest'd. Set Rock 5x22." A BCS record of October 12, 1912 states, with respect to this corner, "Taken out by contractors grading road, and replaced in same point. June 5, 1886." It is not clear from the record how the two dates, 10/12/1912 and 6/5/1886 relate to the actions described. It is also not clear that the same object which was taken out was replaced. It is only stated that it was replaced at the same point.

This corner was excavated on August 12, 2010. Prior to excavation, significant confusion appeared to exist with respect to the location of this corner. The deeds for the parcels on the south side of Hazelrigg Road contain various references for ties to the land section, including references to a wooden headpost at the southeast corner of section 22, an iron bar at the southeast corner of section 22, a tie to the "intersection of the west line of section 23 with the East-West centerline of said Section 23" and a references to an "iron pipe pin, set for the east quarter section corner of said Section 22..." The last quote is taken directly from Instrument 9810158 in the Office of the Boone County Recorder. The description contains a bearing/distance tie for the "iron pipe pin" to a 36 inch Ash tree. Both the tree and the iron pipe were found. With the exception of the specific call for the iron pipe pin, the descriptions of the parcels on the south side of the road indicate that the surveyors who created those descriptions did not know the specific location the east quarter corner of section 22.

Investigation of evidence of the section line to the north of Hazelrigg Road yields much more clarity of the location of the section line. Sections of an ancient north-south fence were found in the woods approximately 1500 feet north of the corner. The parcel for the INDOT garages on US 52 is clearly fenced with newer chain link type fence. The westerly of the fences is slightly east of old fence. The easterly of these fences is at 400 feet east of the line defined by the remnants of fence, which is the record east-west dimension for the INDOT parcel. A steel post on the north side of Hazelrigg Road appears to be the easterly edge of an old gate for the entrance to the property immediately northwest of the corner. Holding the stone found at the corner to the north (see NW-300-200) and extending the line to the south through the remnants of ancient fence, the line appears to fit well with INDOT parcel and the parcels on the north side of the road. Excavation was performed in Hazelrigg Road at the point where this N-S line intersects a line defined by the easterly extension of the approximate center of Hazelrigg Road as it exists at the center of section 22 and for approximately 1000 feet east, prior to angling to the south. No metal monumentation was found at this point prior to excavation. Excavation revealed a stone found embedded in the clay layer below the road near the estimated position of the corner. The stone is at 26 inches deep and is 8 inches N-S by 7 inches E-W by 4 1/2 inches tall. The stone, being embedded in the clay layer below the road and oriented in cardinal directions, fits with characteristics of other stones found marking section corners throughout the county. It does not match the description of "5x22" called for in the 1857 record, but it is noted that that particular stone was found to have been displaced in 1886 or 1912 and it is not clear that the same stone was replaced. The found stone fits well with evidence of the line to the north in the form of the steel post on the north edge of the road, the ancient fence at 1500 feet north and the INDOT fences. It fits well with evidence to the west in the form of the center of Hazelrigg Road as it exists west of the point where it bends to the south. The stone was held as marking the corner and left in place. The harrison monument was set directly over the top, center of the stone.

It is noted that the "iron pipe pin" called for in Instrument 9810158 is located 7 feet south and 48 feet west of the corner marked by the stone. Aside from the deed call for this object to be marking the corner, no other evidence was found to support this position as the corner. It does not fit with any of the evidence to the north and no evidence was found with which it does fit, except the deed descriptions specifically called from it. Holding this point as the corner would cause significant disruptions of the occupied lines to the north, especially with respect to the well established fencing around the INDOT garage on U.S. 52. The "iron pipe pin" is considered erroneous as a position for the corner.



*Kenneth E. Hedge*  
Kenneth E. Hedge, County Surveyor

*James S. Swift*  
James S. Swift, IN LS 20200054

March 30, 2012, Revised April 30, 2012

Center Township

Section 22 T19N, R1W	▲	Section 23 T19N, R1W
-------------------------	---	-------------------------

# SECTION CORNER RECORD

NW 250-300

## BOONE COUNTY SURVEYOR'S OFFICE

State Plane grid coordinates NAD83 (2011):

North: 1758756.47 East: 3108880.644 (U.S. survey feet)

Type of monument: Harrison, 4" disk 'Section Corner'

Depth: Flush with adjacent road surface

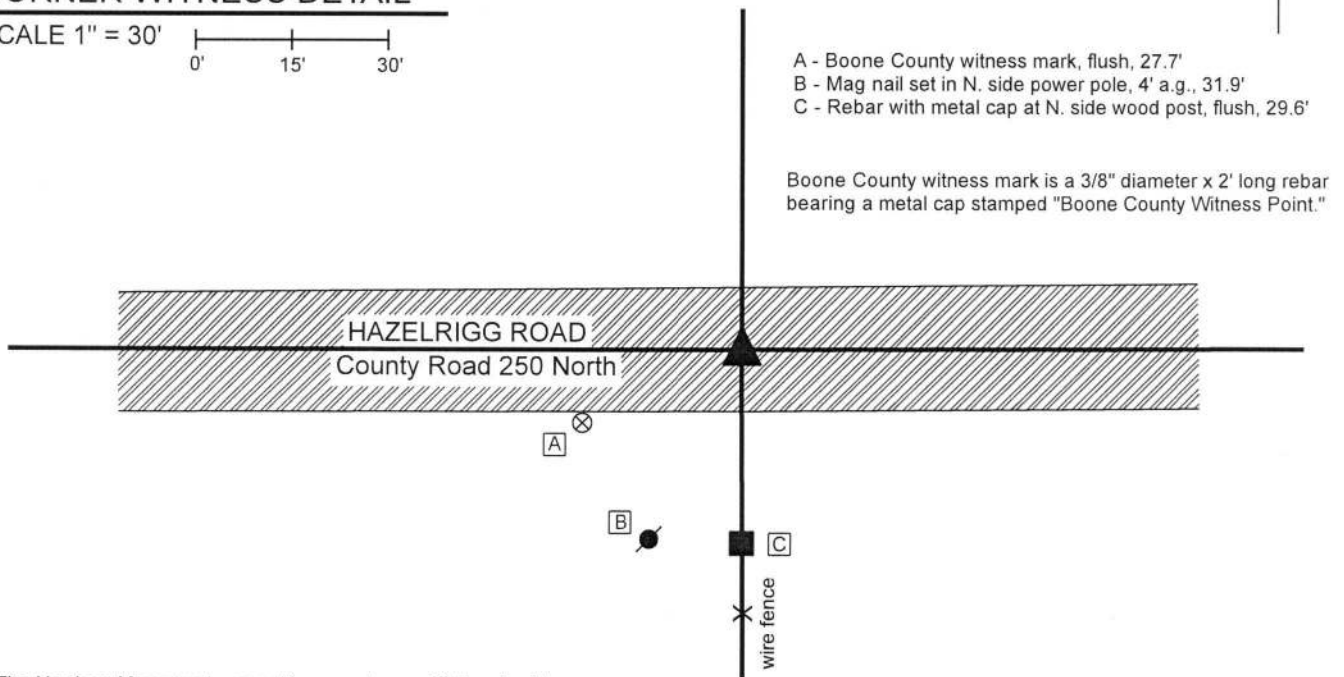
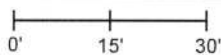
Indiana tie card references:

IN02\_T19NR1W21\_44 IN02\_T19NR1W22\_36



### CORNER WITNESS DETAIL

SCALE 1" = 30'



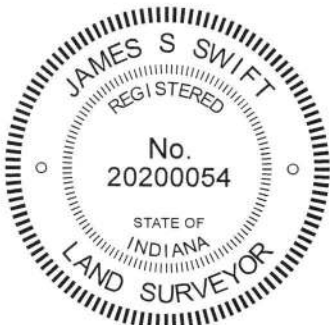
The Harrison Monument was set in accordance with local evidence.

A BCS record dated March, 1838 states, with respect to this corner, "Set Rock 11x18." Another BCS record, dated May 9, 12, 13, 1899, describes the corner as "Reestablished from Oak witness. Found scar on stump. Also ran and measured line for satisfaction. Set rock under marked +. Set rock on top with notch in top."

No recent tie cards were found referencing this corner. No surveys were found recorded in the Boone County Recorder's Office which reference this corner, nor are any artificial monuments known to mark the corner. No metal monuments were found with a magnetic locator in the immediate vicinity of the corner. A rebar with a metal cap stamped 'Carl Anderson ENGR' was found adjacent to the north edge of an ancient corner post immediately south of the road.

The position of the corner was determined with respect to local evidence in the form of the east-west roadway and an ancient fence to the south. The specific position of the corner was established in the center of the physical roadway of County Road 250 North at the prolongation of a line from the section corner approximately one-half mile to the south (see corner NW 200-300) through a wood post which marks the northerly terminus of an ancient fence. Said post is near the south edge of county road and is witnessed by the aforementioned rebar. This position for the corner works well with the relative positions of proximate corners. The monument was set on July 17, 2018. No excavation was performed at this corner beyond the minor excavation necessary to set the monument due to the fact that the corner falls in an area of substantial fill and the possibility of finding ancient evidence is minimal.

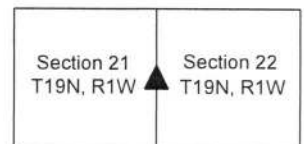
This corner was originally established as a wood post in 1822.



*Kenneth E. Hedge*  
Kenneth E. Hedge, County Surveyor

*James S. Swift*  
James S. Swift, IN LS 20200054  
August 15, 2018

Center Township





# SECTION CORNER RECORD

NW 300-200

## BOONE COUNTY SURVEYOR'S OFFICE

State Plane grid coordinates NAD83 (CORS96):

North: 1761403.92 East: 3114220.04 (U.S. survey feet)

Type of monument: Harrison, 4" disk 'Section Corner'

Depth: One inch below adjacent road surface

Indiana tie card references:

IN02\_T19NR1W15\_80

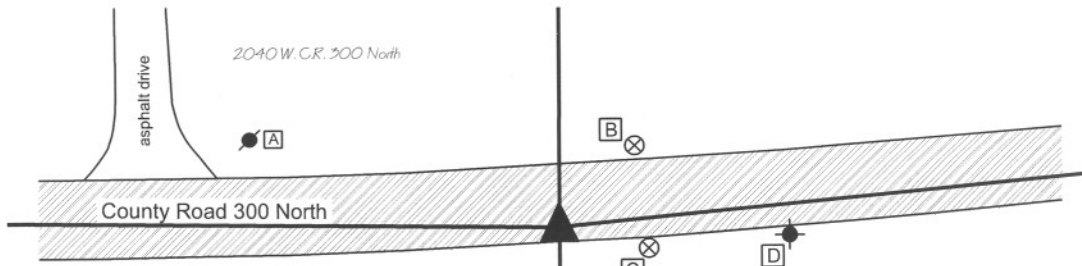
IN02\_T19NR1W14\_72

IN02\_T19NR1W22\_08

IN02\_T19NR1W23\_00

### CORNER WITNESS DETAIL

SCALE 1" = 50'



- A - Mag nail set in S.E. side power pole, 2' a.g., 82.69'
- B - Boone County witness mark, flush, 29.10'
- C - Boone County witness mark, flush, 24.07'
- D - Survey control mark, flush, 60.04'

A 5/8 inch diameter rebar is situated 1.17 feet north and 1.71 feet east of the Harrison monument. (see notes.)

Boone County witness mark is a 3/8" diameter x 2' long rebar bearing a metal cap stamped "Boone County Witness Point."

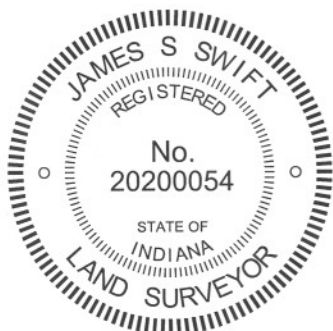
Survey control mark is a 3/8" diameter x 2' long rebar bearing a red plastic cap stamped "Control Point."

The Harrison monument was set over a stone found.

This corner is at a point where a substantial bend in the section lines occurs slightly west of the east line of the Thorntown Indian Reserve. The corner falls approximately 815 feet west of the Indian Reserve line and the situation at the corner is substantially influenced by the original government surveys of the lands within and east of the Reserve. The original government notes for that part of the line between sections 14 and 23 which falls outside (east) of the Reserve, dated August 1822, state "West between section 14 and 23.....67.46 intersected East boundary of Indian Reservation where set post from which..." An original government corner was established at this point. The original government notes for the establishment of the subject corner and for the survey of that part of the line between sections 14 and 23 within the reserve, dated May 1829, state "Set post corner to sections 14, 15, 22 & 23....." and "East on random between sections 14 and 23. 12.38 Intersected E. boundary of Reserve 119 links S. of post. West Corrected same line. 12.38 Section corner." From these notes it is apparent that original corners were set at both the section corner and the corner on reserve line. It is also apparent that the short line between the original corners would angle significantly to the north, compensating for the 119 link north-south difference between the two corners. The diagrams in the BCS Surveyor's Record reflect this angle and the existing roadway of County Road 300 North also reflects this angle. A BCS record of September 14-17, 1857 state "From 1 S86° 42' W to A" showing a distance of 12.39 chains from "1" (corner of the Indian Reserve line) to "A" (the subject corner.) With respect to corner "A", the record reads "Reestab'd Set Rock 5x10."

This corner also falls close to Interstate 65 and the section corner as well as the reserve line are shown on the sheet for line S-2-A, representing the overpass of C.R. 300 North over I-65. The plans (Proj. I-65-5(35) 140, F.Y. 1969, sheet 24 of 202) show the significant bend in County Road 300 North, establishing a P.I. at station 39+25.8. Line S-2-A is shown intersecting the Thorntown Reserve Line at station 87+37.5. The approximate section corner is shown as being on the north side of C.R. 300 North at station 39+04.5, 12' left. For purposes of this investigation, the alignment of line S-2-A was reconstructed by holding Type B monuments found at P.I. stations 45+85.5 and 54+04.5. The calculated location of the approximate section corner, as shown on the plans, does not fit with local evidence, being too far west of the Indian Reserve Line and too far north of the center of County Road 300 North. Accepting that C.R. 300 North was constructed generally along the section line, it would be expected that the section corner would fall within the roadway, at the point where the roadway bends. The field notes for the I-65 plans were supplied by INDOT and they do not show evidence for why the approximate section corner was placed at this point. They do, however, show a fence on the south side of the road marking the Thorntown Reserve line. As this fence is no longer visible, the plans were useful in providing evidence of the location of this line.

An approximate position for the corner was calculated holding the location of the Indian Reserve line shown on the I-65 plans, the record dimensions of 12.38 and 12.39 chains from the corner to the reserve line, and by the physical location of County Road 300 North to the east and west of the corner. Excavation at this point yielded two stones found. One stone was found at 13 inches below grade, measuring 5 inches N-S by 8 inches E-W by 6 inches tall. Another stone was found directly below this stone, at 20 inches deep. As found, the lower stone was lying on its side, and was not oriented in cardinal directions. However, the stone appeared to have been knocked over. Stood up, the stone measured 13 inches tall by 5 inches E-W by 9 inches N-S. The 5x9 dimensions were accepted as being the 5x10 called for in the 1857 record. As stood up, the stone protruded 3 inches out of the clay layer below the road into the bottom of the road bed. The stone is at approximately 815 feet west of the position of the Indian Reserve line calculated from the INDOT plans, which correlates well with the 12.38 chain (817.08 feet) and 12.39 chain (817.74) distances from the original and 1857 records, respectively. The stone was accepted as marking the corner. The stone was left in place, as stood up. The top 2 inches of the stone were encased in concrete and the Harrison monument was set directly over the top of the stone. It is noted that an iron pin with a bolt type head and square shaft was also found. The source of the bolt is not known. It may represent a monument set by the INDOT surveyors, though it does not match the position of the P.I. station 39+25.8. The bolt was removed, but the location of this bolt was perpetuated by established a 30 inch length of 5/8 inch diameter rebar at the same position. The rebar is 1.17 feet north and 1.71 feet east of the Harrison monument. The rebar should not be interpreted as marking the corner. The Harrison monument set over the stone marks the corner.



*Kenneth E. Hedge*  
Kenneth E. Hedge, County Surveyor

*James S. Swift*  
James S. Swift, IN LS 20200054  
March 30, 2012

### Center Township

Section 15 T19N, R1W	Section 14 T19N, R1W
Section 22 T19N, R1W	Section 23 T19N, R1W

PHOTOGRAPHIC DOCUMENTATION

Date of photography: August 11, 2010

View of the top stone as first exposed.



The top stone after being removed from the fill material and the space from which it was removed.



The lower stone as found, apparently on its side. Note that the bottom of the road bed is above the top of the stone.



The lower stone as stood up. Note that the top of the stone protrudes a few inches into the bottom of the road bed when stood up.



The lower stone as stood up, after the area of excavation was filled back to the level of the original bottom of the road bed.



Similar picture as to the left. View from the north.



For details and documentation, refer to related sheet "Section Corner Record."

# SECTION CORNER RECORD

NW 300-300

## BOONE COUNTY SURVEYOR'S OFFICE

State Plane grid coordinates NAD83 (CORS96):

North: 1761409.08 East: 3108881.80 (U.S. survey feet)

Type of monument: Harrison, 4" disk 'Section Corner'


Depth: two inches above adjacent ground

Indiana tie card references:

IN02\_T19NR1W16\_80 IN02\_T19NR1W15\_72

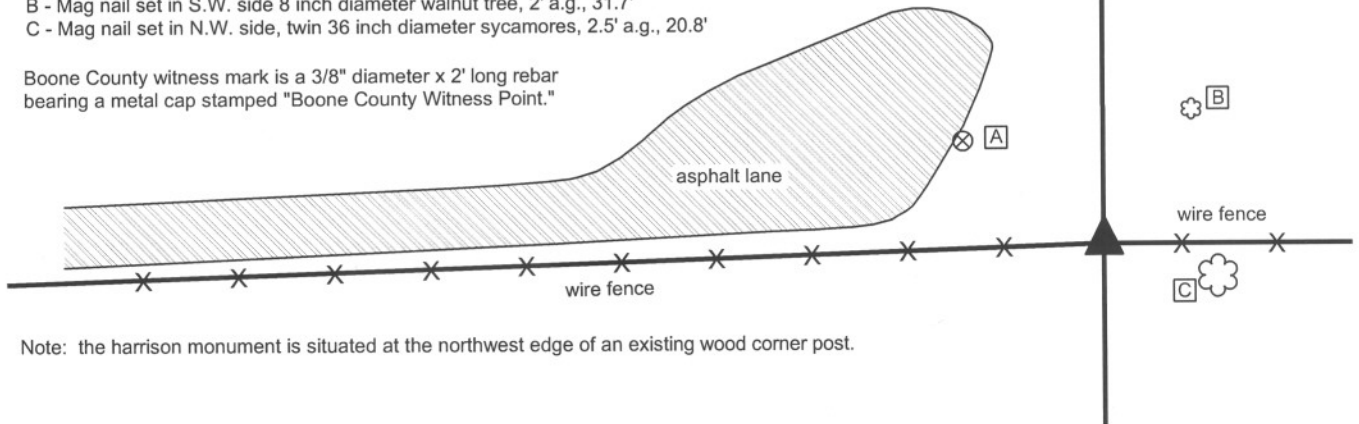
IN02\_T19NR1W21\_08 IN02\_T19NR1W22\_00

### CORNER WITNESS DETAIL

SCALE 1" = 40' 

- A - Boone County witness mark, flush, 37.1'
- B - Mag nail set in S.W. side 8 inch diameter walnut tree, 2' a.g., 31.7'
- C - Mag nail set in N.W. side, twin 36 inch diameter sycamores, 2.5' a.g., 20.8'

Boone County witness mark is a 3/8" diameter x 2' long rebar bearing a metal cap stamped "Boone County Witness Point."



Note: the harrison monument is situated at the northwest edge of an existing wood corner post.

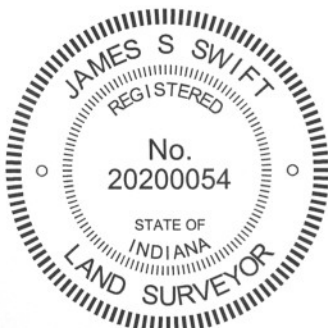
The harrison monument was set in place of a stone found.

A BCS record of May 9, 12 & 13, 1899 states "Reestablished by running line from the north and measuring from east & west for satisfaction. Found C of section 16 from line tree on line between sections 9 & 10. Found c of 16 from witness tree. Found d of 16 from witness stump and rock. Found D of 16 by running line from C (16) through c (16). Established C by running line from D (16) through d (16). Set a rock 9x8x8 in marked +."

No recent BCS tie cards were found referencing this corner.

Reconnaissance and preliminary excavation for this corner occurred on May 1, 2012 with final excavation and monumentation on May 15. Prior to excavation an old wood corner post was found with fence to the east and west and fencing cut off to the north. Wood braces were found on the east and west sides of the post. The stone described in the 1899 record was found at the northwest edge of the post, 6 inches deep. The stone appeared undisturbed and had a distinct etched "+" mark on the top. The stone was removed and found to measure 9 inches E-W by 8 inches N-S by 8 inches tall, as described in the 1899 record. A harrison monument was set in concrete in the position of the etched "+" found on the top of the stone.

This corner was originally established as a wood post in May, 1829.



*Kenneth E. Hedge*  
 Kenneth E. Hedge, County Surveyor

*James S. Swift*  
 James S. Swift, IN LS 20200054  
 January 15, 2013

Center Township

Section 16 T19N, R1W	Section 15 T19N, R1W
Section 21 T19N, R1W	Section 22 T19N, R1W



PHOTOGRAPHIC DOCUMENTATION

Date of photography: May 1- 16, 2012

The corner prior to clearing or excavation.



The stone found at the base of the post.



The stone at the base of the post, after being exposed to the weather for two weeks.



The harrison monument set in place of the stone.



For details and documentation, refer to related sheet "Section Corner Record."