

SECTION CORNER RECORD

BOONE COUNTY SURVEYOR'S OFFICE

NE 200-300

State Plane grid coordinates NAD83 (CORS96):

North: 1756286.78 East: 3140437.82 (U.S. survey feet)

Type of monument: Harrison, 4" disk 'Section Corner'

Depth: six inches below adjacent gravel road surface

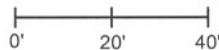
Indiana tie card references:

IN02_T19NR1E21_80 IN02_T19NR1E22_72

IN02_T19NR1E28_08 IN02_T19NR1E27_00

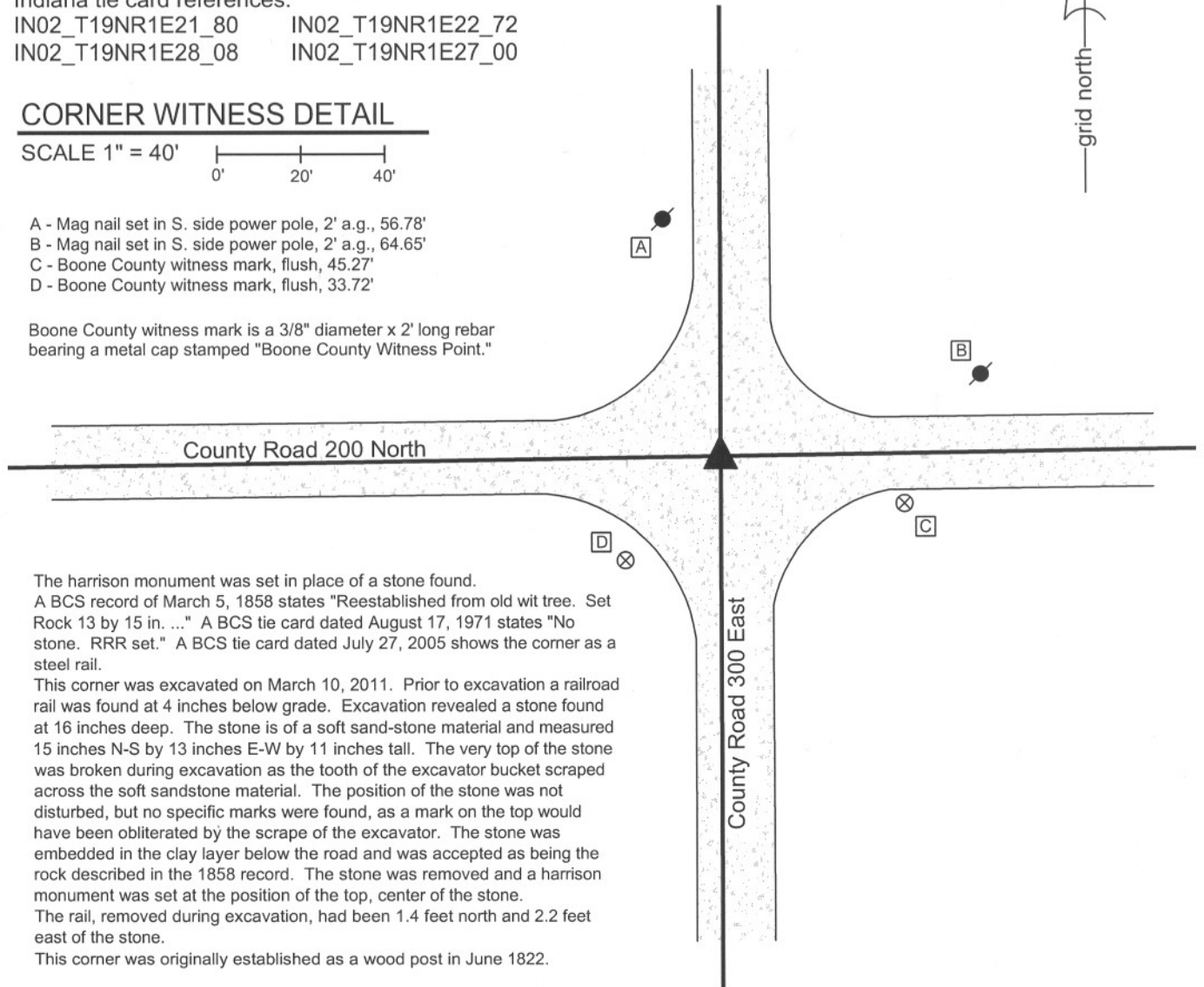
CORNER WITNESS DETAIL

SCALE 1" = 40'



- A - Mag nail set in S. side power pole, 2' a.g., 56.78'
- B - Mag nail set in S. side power pole, 2' a.g., 64.65'
- C - Boone County witness mark, flush, 45.27'
- D - Boone County witness mark, flush, 33.72'

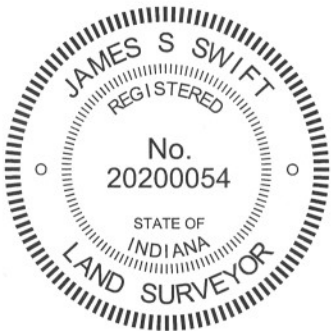
Boone County witness mark is a 3/8" diameter x 2' long rebar bearing a metal cap stamped "Boone County Witness Point."



The harrison monument was set in place of a stone found. A BCS record of March 5, 1858 states "Reestablished from old wit tree. Set Rock 13 by 15 in. ..." A BCS tie card dated August 17, 1971 states "No stone. RRR set." A BCS tie card dated July 27, 2005 shows the corner as a steel rail.

This corner was excavated on March 10, 2011. Prior to excavation a railroad rail was found at 4 inches below grade. Excavation revealed a stone found at 16 inches deep. The stone is of a soft sand-stone material and measured 15 inches N-S by 13 inches E-W by 11 inches tall. The very top of the stone was broken during excavation as the tooth of the excavator bucket scraped across the soft sandstone material. The position of the stone was not disturbed, but no specific marks were found, as a mark on the top would have been obliterated by the scrape of the excavator. The stone was embedded in the clay layer below the road and was accepted as being the rock described in the 1858 record. The stone was removed and a harrison monument was set at the position of the top, center of the stone. The rail, removed during excavation, had been 1.4 feet north and 2.2 feet east of the stone.

This corner was originally established as a wood post in June 1822.



Kenneth E. Hedge
 Kenneth E. Hedge, County Surveyor

James S. Swift
 James S. Swift, IN LS 20200054
 March 1, 2012

Center Township

Section 21 T19N, R1E	Section 22 T19N, R1E
Section 28 T19N, R1E	Section 27 T19N, R1E

PHOTOGRAPHIC DOCUMENTATION

Date of photography: March 10, 2011

View of the stone from the north, looking south along County Road 300 East.



For details and documentation, refer to related sheet "Section Corner Record."

SECTION CORNER RECORD

BOONE COUNTY SURVEYOR'S OFFICE

NE 200-350

State Plane grid coordinates NAD83 (CORS 96):

North: 1756326.25 East: 3143064.79 (U.S. survey feet)

Type of monument: Harrison, 4" disk 'Section Corner'

Depth: six inches below adjacent gravel road surface

Indiana tie card references:

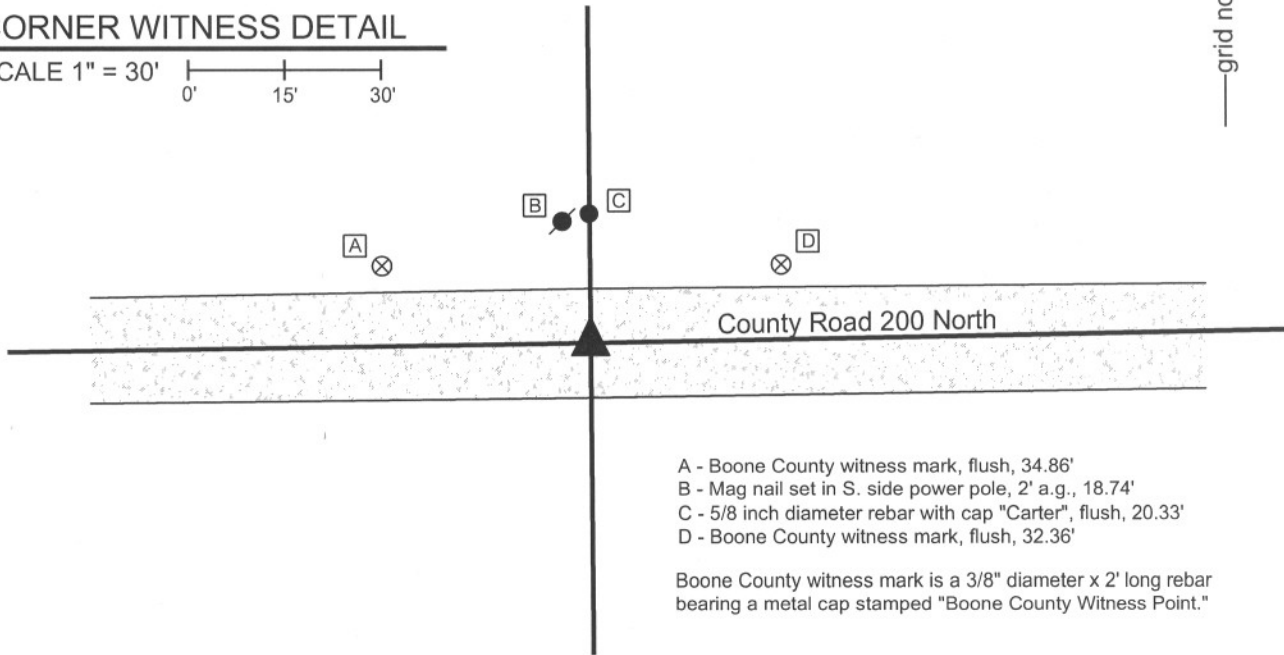
IN02_T19NR1E22_76

IN02_T19NR1E27_04



CORNER WITNESS DETAIL

SCALE 1" = 30'



- A - Boone County witness mark, flush, 34.86'
- B - Mag nail set in S. side power pole, 2' a.g., 18.74'
- C - 5/8 inch diameter rebar with cap "Carter", flush, 20.33'
- D - Boone County witness mark, flush, 32.36'

Boone County witness mark is a 3/8" diameter x 2' long rebar bearing a metal cap stamped "Boone County Witness Point."

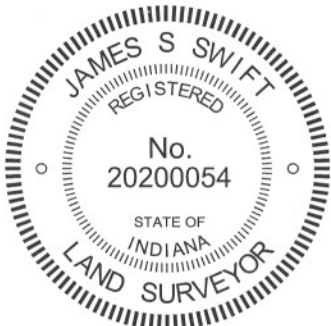
The harrison monument was set in place of a vertical section of railroad rail found.

A BCS record of March 5, 1858 states "Set Rock 12 by 16 in. ..." A BCS tie card dated August 1, 2005 shows the corner as a steel rail with no documentation of source.

This corner was excavated on March 11, 2011. Prior to excavation a vertical section of railroad rail was found at 11 inches below grade. No other specific evidence of the corner was found in an area of excavation extending 4 feet in each direction from the railroad rail. The cross-section of the road bed in this vicinity is not typical of cross-sections found at most corners excavated. The road bed is approximately 11 inches thick, hence the rail was at the bottom of the primary road bed. Below the road bed is a material of dense, compressed black dirt rather than the clay material typically found below the road bed. Curiously, the elevation of the dense black dirt material is above the grade of the surrounding fields. This may represent some form of a fill material introduced to bring up a low area of road. One explanation for the lack of the record stone may be that it was removed in association with the introduction of the fill material, if indeed, fill material was introduced. Another explanation is that the record stone may have been found and replaced with the railroad rail at some point in the late 1960s or early 1970s. It is known that removal of a found stone and replacement with a railroad rail was a common practice of BCS field crews in that time frame. No documentation, in the form of field notes or tie cards, was found supporting this possible explanation. The reference to the rail in the 2005 tie card indicates that the rail was found, not set, at that time. The position of the rail does fit with the other evidence of the corner, being in the center of the east-west road at the southerly extension of a field division to the north.

The railroad rail was accepted as the best evidence of the location of the corner and was held as marking such. The rail was removed during excavation and was replaced with a harrison monument in the same position.

This corner was originally established as a wood post in June, 1822.



Kenneth E. Hedge
 Kenneth E. Hedge, County Surveyor

James S. Swift
 James S. Swift, IN LS 20200054

March 1, 2012

Center Township

Section 22
T19N, R1E

Section 27
T19N, R1E

SECTION CORNER RECORD

BOONE COUNTY SURVEYOR'S OFFICE

NE 200-400

State Plane grid coordinates NAD83 (CORS96):

North: 1756371.85 East: 3145690.21 (U.S. survey feet)

Type of monument: Harrison, 4" disk 'Section Corner'

Depth: six inches below adjacent gravel road surface

Indiana tie card references:

IN02_T19NR1E22_80 IN02_T19NR1E23_72
 IN02_T19NR1E27_08 IN02_T19NR1E26_00

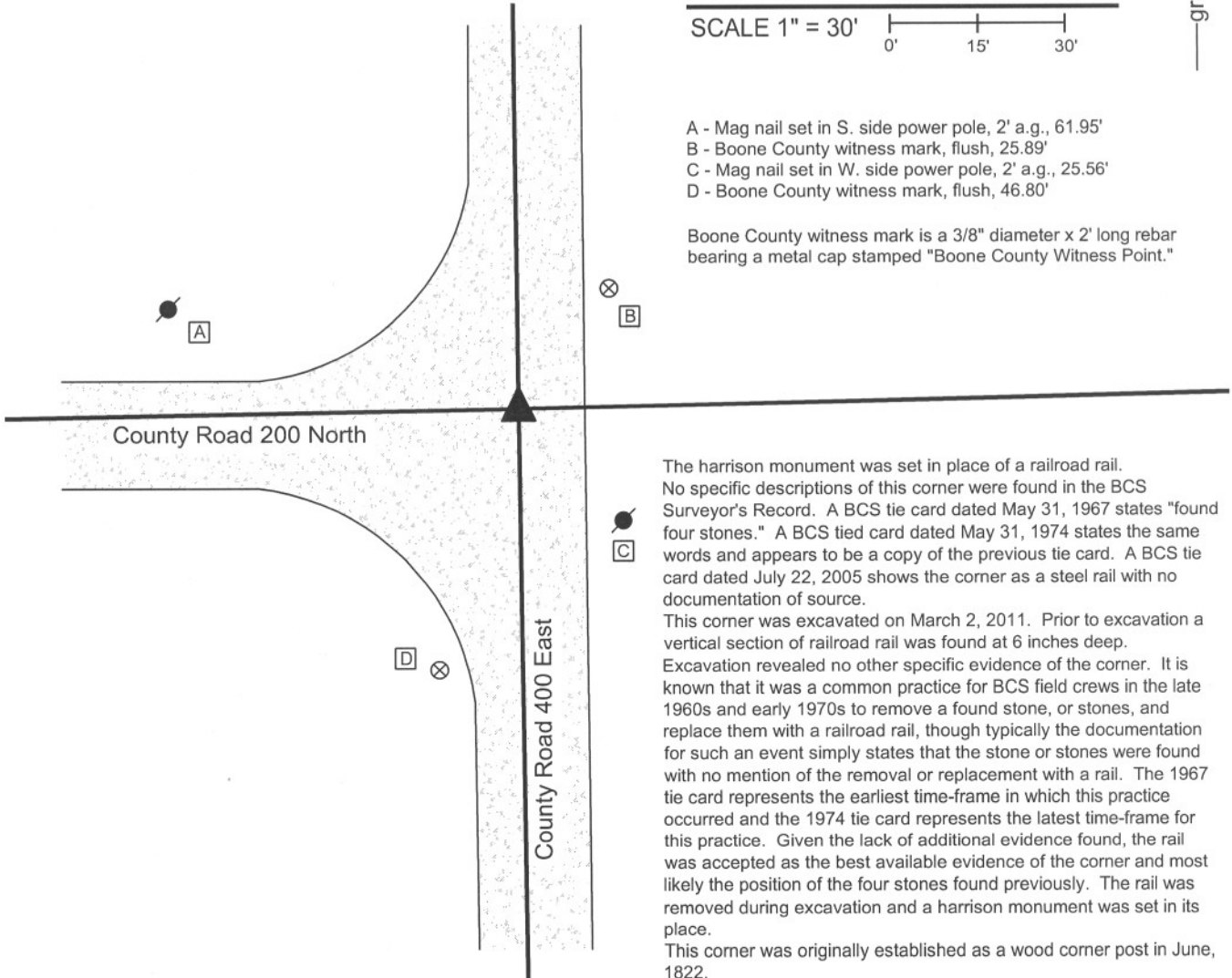
CORNER WITNESS DETAIL

SCALE 1" = 30'



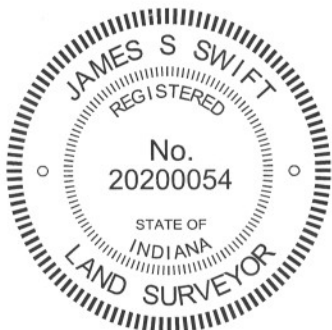
- A - Mag nail set in S. side power pole, 2' a.g., 61.95'
- B - Boone County witness mark, flush, 25.89'
- C - Mag nail set in W. side power pole, 2' a.g., 25.56'
- D - Boone County witness mark, flush, 46.80'

Boone County witness mark is a 3/8" diameter x 2' long rebar bearing a metal cap stamped "Boone County Witness Point."



The harrison monument was set in place of a railroad rail. No specific descriptions of this corner were found in the BCS Surveyor's Record. A BCS tie card dated May 31, 1967 states "found four stones." A BCS tied card dated May 31, 1974 states the same words and appears to be a copy of the previous tie card. A BCS tie card dated July 22, 2005 shows the corner as a steel rail with no documentation of source.

This corner was excavated on March 2, 2011. Prior to excavation a vertical section of railroad rail was found at 6 inches deep. Excavation revealed no other specific evidence of the corner. It is known that it was a common practice for BCS field crews in the late 1960s and early 1970s to remove a found stone, or stones, and replace them with a railroad rail, though typically the documentation for such an event simply states that the stone or stones were found with no mention of the removal or replacement with a rail. The 1967 tie card represents the earliest time-frame in which this practice occurred and the 1974 tie card represents the latest time-frame for this practice. Given the lack of additional evidence found, the rail was accepted as the best available evidence of the corner and most likely the position of the four stones found previously. The rail was removed during excavation and a harrison monument was set in its place. This corner was originally established as a wood corner post in June, 1822.



Kenneth E. Hedge
 Kenneth E. Hedge, County Surveyor

James S. Swift
 James S. Swift, IN LS 20200054
 March 1, 2012

Center Township

Section 22 T19N, R1E	Section 23 T19N, R1E
Section 27 T19N, R1E	Section 26 T19N, R1E

SECTION CORNER RECORD

BOONE COUNTY SURVEYOR'S OFFICE

NE 250-300


State Plane grid coordinates NAD83 (CORS96):
 North: 1758934.16 East: 3140434.62 (U.S. survey feet)

Type of monument: Harrison, 4" disk 'Section Corner'
 Depth: six inches below adjacent gravel road surface

Indiana tie card references:
 IN02_T19NR1E21_44
 IN02_T19NR1E22_36

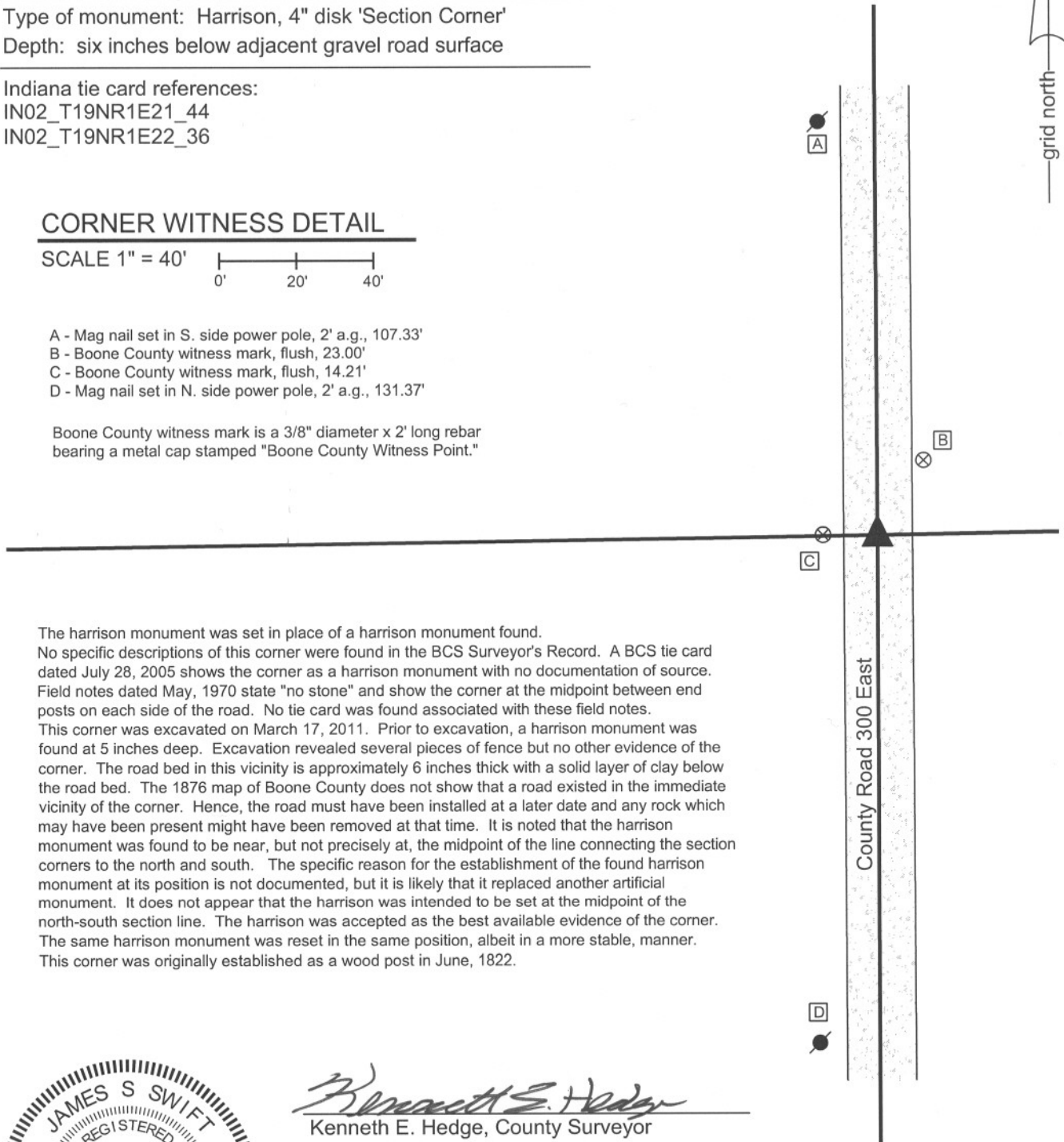
CORNER WITNESS DETAIL

SCALE 1" = 40'

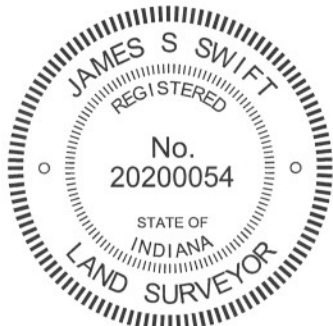


- A - Mag nail set in S. side power pole, 2' a.g., 107.33'
- B - Boone County witness mark, flush, 23.00'
- C - Boone County witness mark, flush, 14.21'
- D - Mag nail set in N. side power pole, 2' a.g., 131.37'

Boone County witness mark is a 3/8" diameter x 2' long rebar bearing a metal cap stamped "Boone County Witness Point."

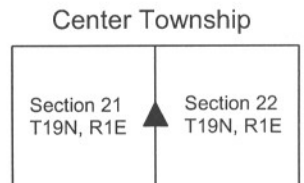


The Harrison monument was set in place of a Harrison monument found. No specific descriptions of this corner were found in the BCS Surveyor's Record. A BCS tie card dated July 28, 2005 shows the corner as a Harrison monument with no documentation of source. Field notes dated May, 1970 state "no stone" and show the corner at the midpoint between end posts on each side of the road. No tie card was found associated with these field notes. This corner was excavated on March 17, 2011. Prior to excavation, a Harrison monument was found at 5 inches deep. Excavation revealed several pieces of fence but no other evidence of the corner. The road bed in this vicinity is approximately 6 inches thick with a solid layer of clay below the road bed. The 1876 map of Boone County does not show that a road existed in the immediate vicinity of the corner. Hence, the road must have been installed at a later date and any rock which may have been present might have been removed at that time. It is noted that the Harrison monument was found to be near, but not precisely at, the midpoint of the line connecting the section corners to the north and south. The specific reason for the establishment of the found Harrison monument at its position is not documented, but it is likely that it replaced another artificial monument. It does not appear that the Harrison was intended to be set at the midpoint of the north-south section line. The Harrison was accepted as the best available evidence of the corner. The same Harrison monument was reset in the same position, albeit in a more stable, manner. This corner was originally established as a wood post in June, 1822.



Kenneth E. Hedge
 Kenneth E. Hedge, County Surveyor

James S. Swift
 James S. Swift, IN LS 20200054
 March 1, 2012



SECTION CORNER RECORD

BOONE COUNTY SURVEYOR'S OFFICE

NE 250-400

State Plane grid coordinates NAD83 (CORS96):

North: 1759019.50 East: 3145662.06 (U.S. survey feet)

Type of monument: Harrison, 4" disk 'Section Corner'

Depth: six inches below adjacent gravel road surface

Indiana tie card references:

IN02_T19NR1E22_44

IN02_T19NR1E23_36

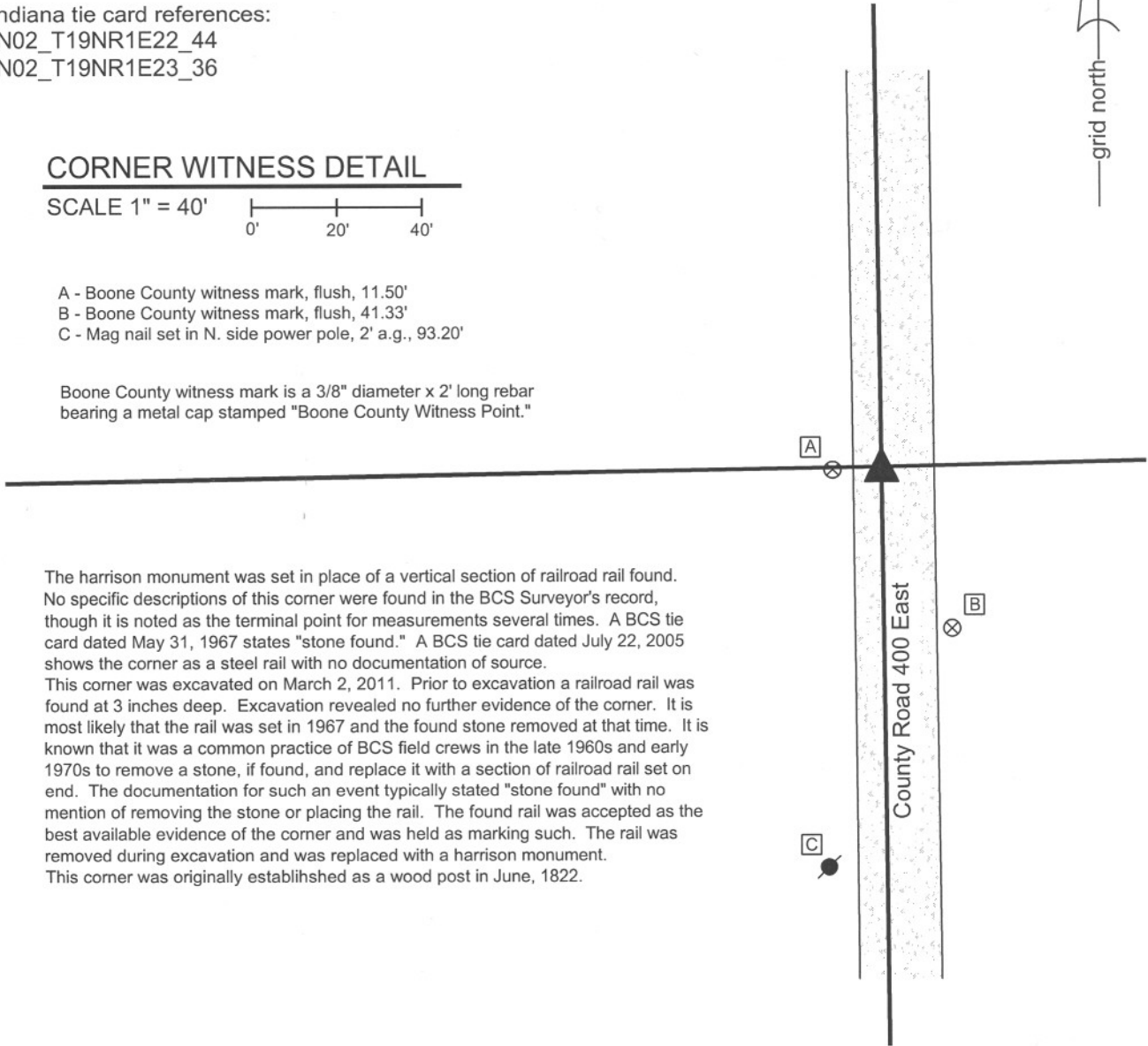
CORNER WITNESS DETAIL

SCALE 1" = 40'

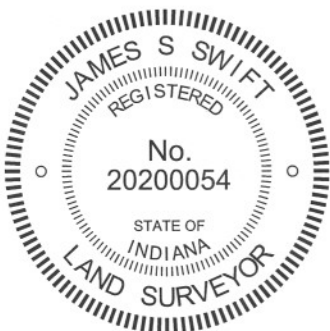


- A - Boone County witness mark, flush, 11.50'
- B - Boone County witness mark, flush, 41.33'
- C - Mag nail set in N. side power pole, 2' a.g., 93.20'

Boone County witness mark is a 3/8" diameter x 2' long rebar bearing a metal cap stamped "Boone County Witness Point."

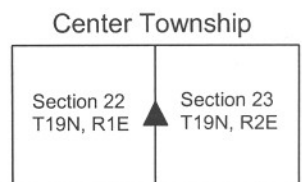


The harrison monument was set in place of a vertical section of railroad rail found. No specific descriptions of this corner were found in the BCS Surveyor's record, though it is noted as the terminal point for measurements several times. A BCS tie card dated May 31, 1967 states "stone found." A BCS tie card dated July 22, 2005 shows the corner as a steel rail with no documentation of source. This corner was excavated on March 2, 2011. Prior to excavation a railroad rail was found at 3 inches deep. Excavation revealed no further evidence of the corner. It is most likely that the rail was set in 1967 and the found stone removed at that time. It is known that it was a common practice of BCS field crews in the late 1960s and early 1970s to remove a stone, if found, and replace it with a section of railroad rail set on end. The documentation for such an event typically stated "stone found" with no mention of removing the stone or placing the rail. The found rail was accepted as the best available evidence of the corner and was held as marking such. The rail was removed during excavation and was replaced with a harrison monument. This corner was originally established as a wood post in June, 1822.



Kenneth E. Hedge
 Kenneth E. Hedge, County Surveyor

James S. Swift
 James S. Swift, IN LS 20200054
 March 1, 2012



SECTION CORNER RECORD

NE 300-300

BOONE COUNTY SURVEYOR'S OFFICE

State Plane grid coordinates NAD83 (CORS96):

North: 1761579.91 East: 3140427.34 (U.S. survey feet)

Type of monument: Harrison, 4" disk 'Section Corner'

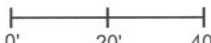
Depth: six inches below adjacent gravel road surface

Indiana tie card references:

IN02_T19NR1E16_80 IN02_T19NR1E15_72

IN02_T19NR1E21_08 IN02_T19NR1E22_00

CORNER WITNESS DETAIL

SCALE 1" = 40' 

- A - Mag nail set in S. side power pole, 2' a.g., 107.03'
- B - Mag nail set in E. side wood post, 2' a.g., 15.49'
- C - Boone County witness mark, flush, 27.78'
- D - Mag nail set in N. side power pole, 2' a.g., 132.76'

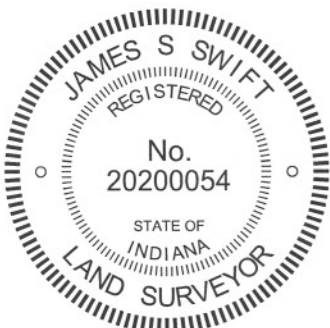
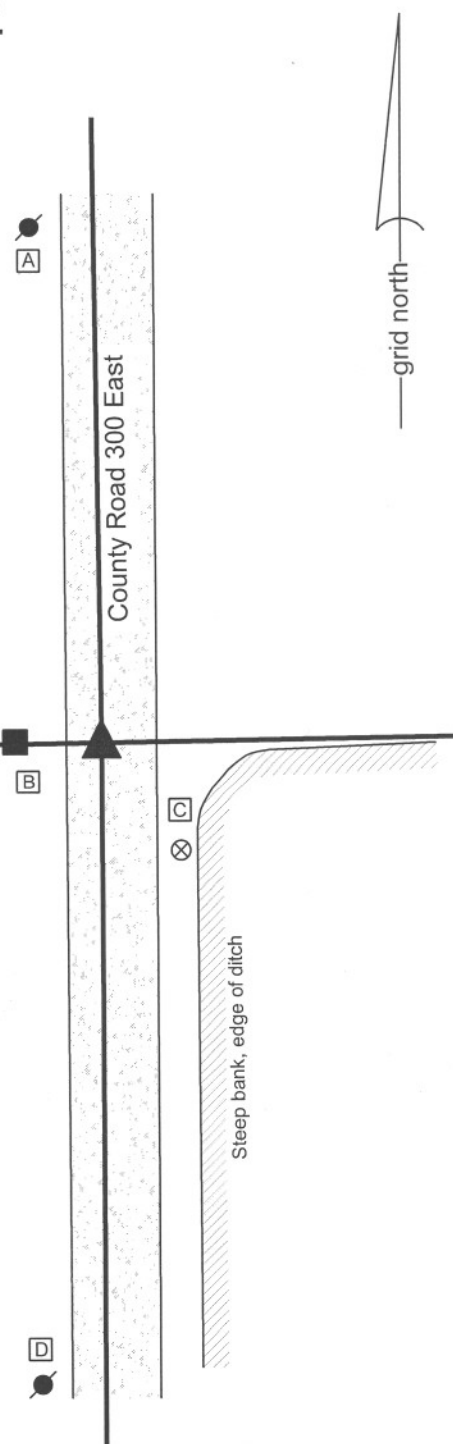
Boone County witness mark is a 3/8" diameter x 2' long rebar bearing a metal cap stamped "Boone County Witness Point."

The harrison monument was set in place of vertical section of railroad rail.

No specific descriptions of this corner were found in the BCS Surveyor's Record. A BCS tie card dated November, 1970 states "no stone." A BCS tie card dated July 27, 2005 shows the corner as a steel rail with no documentation of source.

This corner was excavated on March 10, 2011. Prior to excavation, a railroad rail was found at 4 inches deep. Excavation of an area extending 6 feet north, 4 feet east, 5 feet south and 6 feet west of the rail did not yield any further evidence of the corner. It is most likely that the rail was set in association with the 1970 tie card. The rail does fit with the local evidence of the corner, being located in the approximate center of the north-south county road and immediately east of an old wood end post on the west side of the road. The rail was accepted as the best available evidence of the corner. The rail was removed during excavation and replaced with a harrison monument in the same position.

This corner was originally established as a wood post in June, 1822.



Kenneth E. Hedge
 Kenneth E. Hedge, County Surveyor

James S. Swift
 James S. Swift, IN LS 20200054
 March 1, 2012

Center Township

Section 16 T19N, R1E	Section 15 T19N, R1E
Section 21 T19N, R1E	Section 22 T19N, R1E

SECTION CORNER RECORD

NE 300-350

BOONE COUNTY SURVEYOR'S OFFICE

State Plane grid coordinates NAD83 (2011):

North: 1761627.06 East: 3143028.23 (U.S. survey feet)

Type of monument: Harrison, 4" disk 'Section Corner'

Depth: Two inches above adjacent ground

Indiana tie card references:

IN02_T19NR1E15_76 IN02_T19NR1E22_04

CORNER WITNESS DETAIL

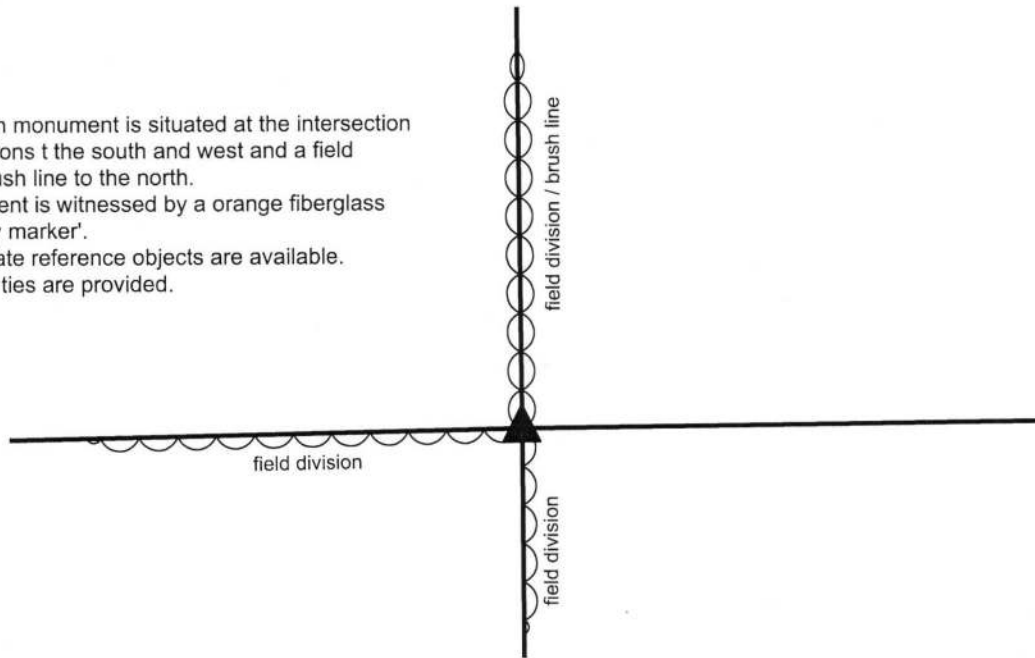
No scale

The Harrison monument is situated at the intersection of field divisions to the south and west and a field division / brush line to the north.

The monument is witnessed by an orange fiberglass lathe 'survey marker'.

No appropriate reference objects are available.

No distance ties are provided.

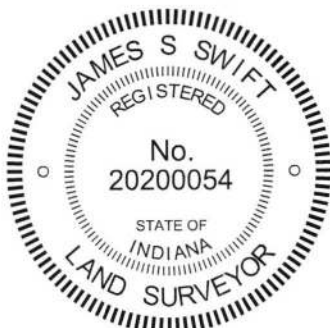


The Harrison monument was set over the subterranean base of a wood corner post.


A BCS tie card dated October, 1884 states, with respect to this corner, "Re-estab. from old B. Trees, Rock 16, 10, 6 +." No recent BCS tie cards were found referencing this corner.

Excavation was performed at this corner on October 19, 2017. Prior to excavation, the top of an old wood corner post was found lying on the ground near the intersection of field divisions to the north, south and west. Excavation revealed the base of the post found precisely at the intersection of the field divisions, approximately 4 feet south of the part of the post found lying on the ground. Excavation around the post and in the immediate vicinity of the corner revealed no further evidence found. The stone called for in the 1884 record was not found. The position of the base of the post fit well with the relative positions of proximate corners. The base of the post is approximately 11 feet north of a straight line connecting the section corners approximately 1/2 mile east and west, respectively, but nearly equidistant from those corners. The base of the post was accepted as the best available evidence of the original position of the corner. The top 16 inches of the base of the post were exposed. The post appeared to be vertical and was entirely stable in the ground at that depth. The top of the base of the post was sawed off. The upper 4 inches of the remaining portion of the post were encased in concrete and the rest of the post was left in the ground. A Harrison monument was set directly over the remaining portion of the base of the post.

This corner was originally established as a wood post in 1822.




Kenneth E. Hedge, County Surveyor


James S. Swift, IN LS 20200054
October 31, 2017

Center Twp

Section 15
T19N, R1E

Section 22
T19N, R1E

SECTION CORNER RECORD

NE 300-400

BOONE COUNTY SURVEYOR'S OFFICE

State Plane grid coordinates NAD83 (CORS96):

North: 1761652.77 East: 3145628.76 (U.S. survey feet)

Type of monument: Harrison, 4" disk 'Section Corner'

Depth: six inches below adjacent gravel road surface

Indiana tie card references:

IN02_T19NR1E15_80 IN02_T19NR1E14_72

IN02_T19NR1E22_08 IN02_T19NR1E23_00

CORNER WITNESS DETAIL

SCALE 1" = 30'

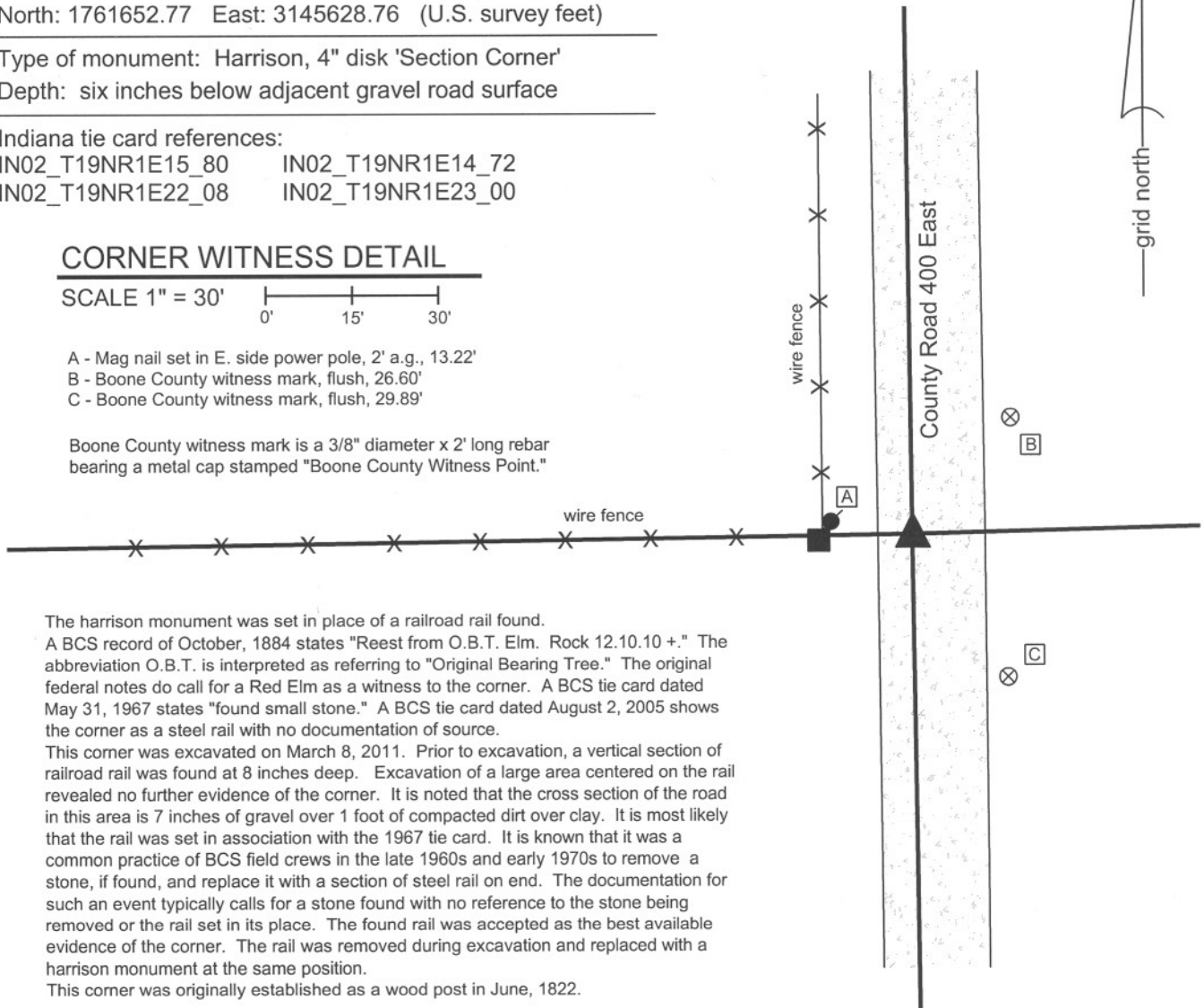


A - Mag nail set in E. side power pole, 2' a.g., 13.22'

B - Boone County witness mark, flush, 26.60'

C - Boone County witness mark, flush, 29.89'

Boone County witness mark is a 3/8" diameter x 2' long rebar bearing a metal cap stamped "Boone County Witness Point."

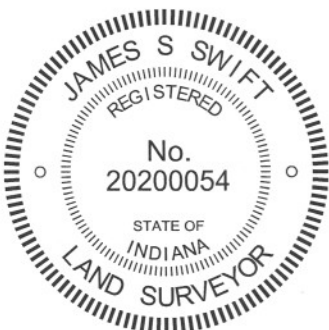


The harrison monument was set in place of a railroad rail found.

A BCS record of October, 1884 states "Reest from O.B.T. Elm. Rock 12.10.10 +." The abbreviation O.B.T. is interpreted as referring to "Original Bearing Tree." The original federal notes do call for a Red Elm as a witness to the corner. A BCS tie card dated May 31, 1967 states "found small stone." A BCS tie card dated August 2, 2005 shows the corner as a steel rail with no documentation of source.

This corner was excavated on March 8, 2011. Prior to excavation, a vertical section of railroad rail was found at 8 inches deep. Excavation of a large area centered on the rail revealed no further evidence of the corner. It is noted that the cross section of the road in this area is 7 inches of gravel over 1 foot of compacted dirt over clay. It is most likely that the rail was set in association with the 1967 tie card. It is known that it was a common practice of BCS field crews in the late 1960s and early 1970s to remove a stone, if found, and replace it with a section of steel rail on end. The documentation for such an event typically calls for a stone found with no reference to the stone being removed or the rail set in its place. The found rail was accepted as the best available evidence of the corner. The rail was removed during excavation and replaced with a harrison monument at the same position.

This corner was originally established as a wood post in June, 1822.



Kenneth E. Hedge
 Kenneth E. Hedge, County Surveyor

James S. Swift
 James S. Swift, IN LS 20200054
 March 1, 2012

Center Township

Section 15 T19N, R1E	Section 14 T19N, R1E
Section 22 T19N, R1E	Section 23 T19N, R1E