

SECTION CORNER RECORD

SE 300-300

BOONE COUNTY SURVEYOR'S OFFICE

State Plane grid coordinates NAD83 (NSRS 2007):

North: 1730128.28 East: 3140594.30 (U.S. survey feet)

Type of monument: Harrison, 4" disk 'Section Corner'

Depth: One inch below adjacent road surface

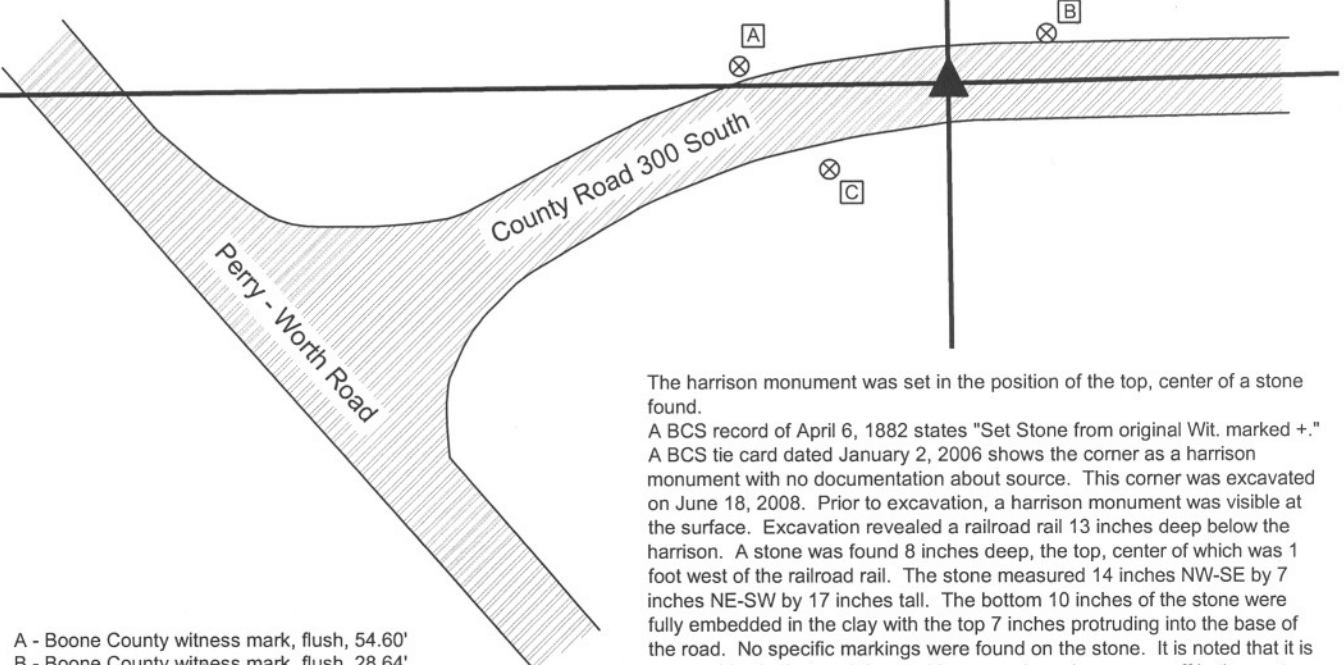
Indiana tie card references:

IN02_T18NR1E15_72 IN02_T18NR1E16_80

IN02_T18NR1E21_08 IN02_T18NR1E22_00

CORNER WITNESS DETAIL

SCALE 1" = 50'



- A - Boone County witness mark, flush, 54.60'
- B - Boone County witness mark, flush, 28.64'
- C - Boone County witness mark, flush, 38.06'

Boone County witness mark is a 3/8" diameter x 2' long rebar bearing a metal cap stamped "Boone County Witness Point."

The harrison monument was set in the position of the top, center of a stone found.

A BCS record of April 6, 1882 states "Set Stone from original Wit. marked +." A BCS tie card dated January 2, 2006 shows the corner as a harrison monument with no documentation about source. This corner was excavated on June 18, 2008. Prior to excavation, a harrison monument was visible at the surface. Excavation revealed a railroad rail 13 inches deep below the harrison. A stone was found 8 inches deep, the top, center of which was 1 foot west of the railroad rail. The stone measured 14 inches NW-SE by 7 inches NE-SW by 17 inches tall. The bottom 10 inches of the stone were fully embedded in the clay with the top 7 inches protruding into the base of the road. No specific markings were found on the stone. It is noted that it is reasonably shallow and the markings may have been worn off in the past, as has been observed on other stones. A small rock and remnants of wood were found along the bottom of the north edge of the stone. It is noted that the top of the rail was below the top of the stone. No source was found for the establishment of the rail. The stone was removed and the harrison monument was set in the position of the top, center of the stone. This corner was originally established as a wood post in June, 1820.



Kenneth E. Hedge
 Kenneth E. Hedge, County Surveyor

Center Township

James S. Swift
 James S. Swift, IN LS 20200054

Perry Township

March 11, 2009

Section 16 T18N, R1E	Section 15 T18N, R1E
Section 21 T18N, R1E	Section 22 T18N, R1E

PHOTOGRAPHIC DOCUMENTATION

Date of photography: June 18, 2008

Corner stone and railroad rail.
Overhead view from North.



Corner stone and railroad rail.
Overhead view from West.



View of corner stone showing clay at west end.
Overhead view from North.



Corner stone removed from ground, showing extent to which stone was embedded in clay. Approximately 10" of stone was in clay and 7" protruding into bottom of road bed.



For details and documentation, refer to related sheet "Section Corner Record."

SECTION CORNER RECORD

SE 300-350

BOONE COUNTY SURVEYOR'S OFFICE

State Plane grid coordinates NAD83 (NSRS 2007):

North: 1730187.35 East: 3143246.08 (U.S. survey feet)

Type of monument: Harrison, 4" disk 'Section Corner'

Depth: One inch below adjacent road surface

Indiana tie card references:

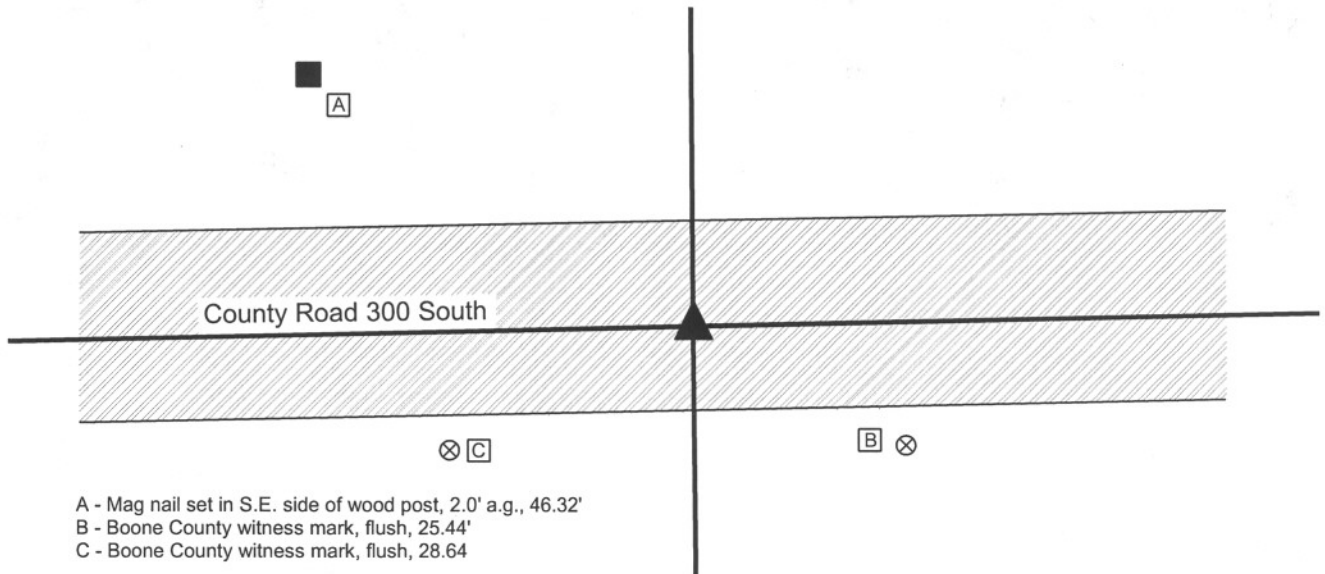
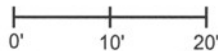
IN02_T18NR1E15_76

IN02_T18NR1E22_04



CORNER WITNESS DETAIL

SCALE 1" = 20'



- A - Mag nail set in S.E. side of wood post, 2.0' a.g., 46.32'
- B - Boone County witness mark, flush, 25.44'
- C - Boone County witness mark, flush, 28.64'

Boone County witness mark is a 3/8" diameter x 2' long rebar bearing a metal cap stamped "Boone County Witness Point."

The harrison monument was set over the top of a stone found and in place of two railroad spikes found. A BCS record of March 6, 1882 calls for a corner stone, 7.9.12 +. No BCS tie cards were found for this corner. This corner was excavated on July 21, 2008. Prior to excavation, no monuments were visible, nor was there visible evidence of the corner in the immediate vicinity other than County Road 300 South. A strong metal reading was detected with a magnetic locator in the vicinity of the logical position for the corner. A railroad spike was found 8 inches deep at this position. Another railroad spike was found directly below the top spike. At approximately 18 inches deep, the record stone was found directly below the two spikes. The stone is well embedded in the clay layer below the road and measures 7 inches E-W by 9 inches N-S. The top 10 inches of the stone were exposed but it was not excavated to the bottom to retain its original stability. The harrison monument was set over the etched "+" on the stone, which is also in precise agreement with the positions of the two railroad spikes. This corner was originally established as a wood post in June, 1820.



Kenneth E. Hedge
 Kenneth E. Hedge, County Surveyor

James S. Swift
 James S. Swift, IN LS 20200054

March 11, 2009

Center Township

Perry Township



PHOTOGRAPHIC DOCUMENTATION

Date of photography: July 21, 2008

Corner stone - overhead view from Northwest.



Same picture as to left, but vague, shallow etched "+" on top of stone is enhanced for ease of visual detection.



Corner stone - overhead view.



View from East, looking over corner stone and west down County Road 300 South.



For details and documentation, refer to related sheet "Section Corner Record."

SECTION CORNER RECORD

SE 300-400

BOONE COUNTY SURVEYOR'S OFFICE

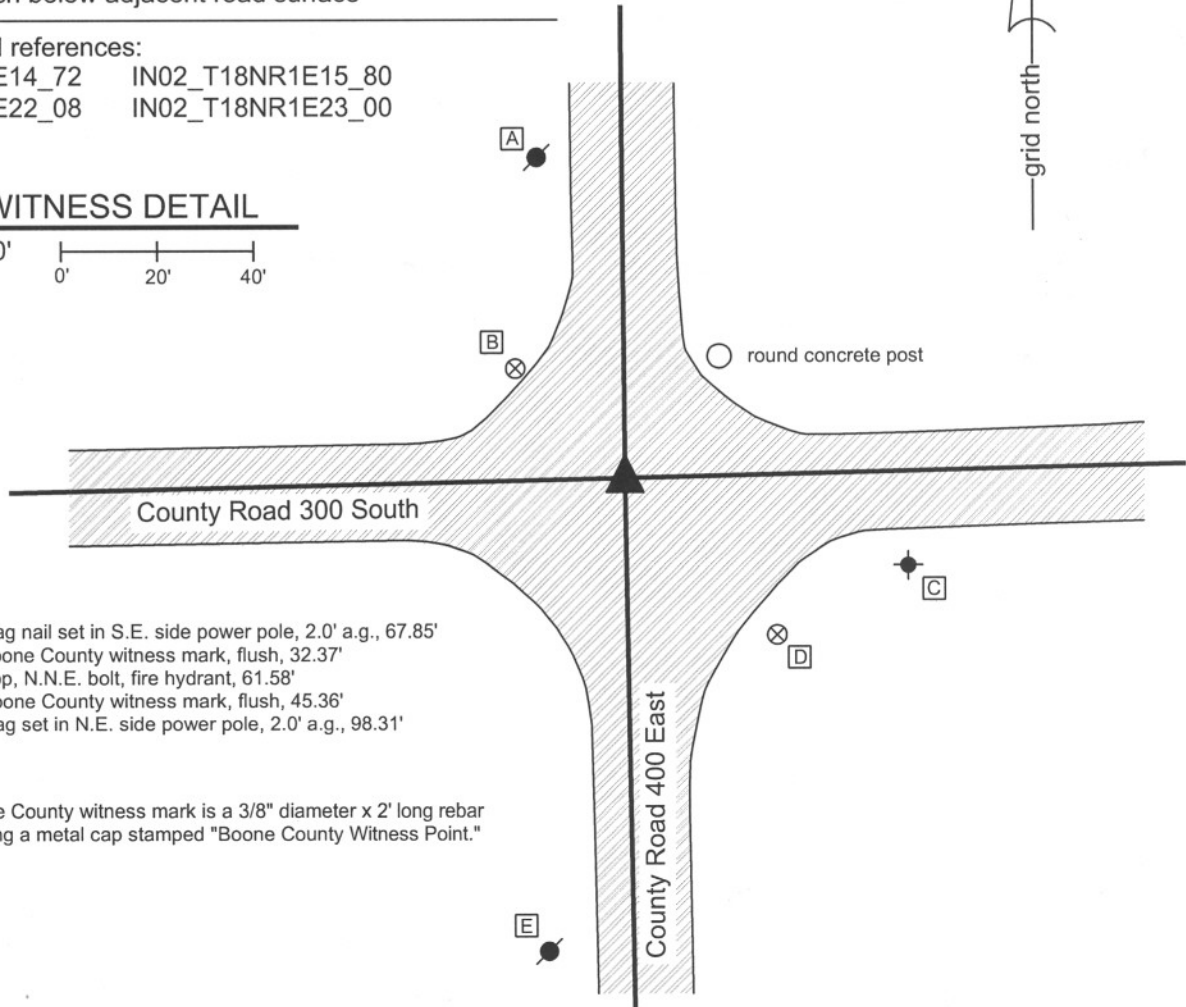
State Plane grid coordinates NAD83 (NSRS 2007):
 North: 1730242.88 East: 3145898.82 (U.S. survey feet)

Type of monument: Harrison, 4" disk 'Section Corner'
 Depth: One inch below adjacent road surface

Indiana tie card references:
 IN02_T18NR1E14_72 IN02_T18NR1E15_80
 IN02_T18NR1E22_08 IN02_T18NR1E23_00

CORNER WITNESS DETAIL

SCALE 1" = 40'



- A - Mag nail set in S.E. side power pole, 2.0' a.g., 67.85'
- B - Boone County witness mark, flush, 32.37'
- C - Top, N.N.E. bolt, fire hydrant, 61.58'
- D - Boone County witness mark, flush, 45.36'
- E - Mag set in N.E. side power pole, 2.0' a.g., 98.31'

Boone County witness mark is a 3/8" diameter x 2' long rebar bearing a metal cap stamped "Boone County Witness Point."

The harrison monument was set over a stone found.

A BCS record of October 29, 1873 states "Reestablished from stump of Red Oak. Set Two Rocks. One 8,5 1/2,4. Top one 11,9,5 1/2 +." A BCS tie card with no date states "No stone. Set temporary 1 1/4" pipe." A BCS tie card dated October 25, 2005 shows the corner as a harrison monument with no documentation about the source. This corner was excavated on June 18, 2008. Prior to excavation, a harrison monument was visible at the surface. Excavation revealed a railroad rail below the harrison at 12 inches deep. A second railroad rail was found at 10 inches deep 1.0 foot North and 0.5 feet E of the first rail. No explanation is offered as to why two railroad rails were present at the intersection. The record stone was found at 23 inches deep. The stone measures 9 inches E-W by 5 1/2 inches N-S by 11 inches tall. The etched "+" is clearly visible on the south side of the sloping top of the stone. Refer to the attached sheet for photographic documentation of the rails and record stone. The new harrison was set over the top of the stone. The previously existing harrison and both rails were removed during excavation. The previous harrison had been 2.4 feet south and 1.8 feet east of the record stone.



Kenneth E. Hedge
 Kenneth E. Hedge, County Surveyor

James S. Swift
 James S. Swift, IN LS 20200054

March 11, 2009

Center Township

Perry Township

Worth Twp

Section 15 T18N, R1E	Section 14 T18N, R1E
Section 22 T18N, R1E	Section 23 T18N, R1E

PHOTOGRAPHIC DOCUMENTATION

Date of photography: June 18, 2008

Two railroad rails found approximately 1.3 feet apart. See other sheet for information.



Corner stone - overhead view from South.



Corner stone. Close up view.



View from the South looking North across the stone and along County Road 400 East.



View from the West looking East across the stone and along County Road 300 South.



For details and documentation, refer to related sheet "Section Corner Record."

SECTION CORNER RECORD

SE 350-300

BOONE COUNTY SURVEYOR'S OFFICE

State Plane grid coordinates NAD83 (NSRS 2007):

North: 1727469.05 East: 3140622.48 (U.S. survey feet)

Type of monument: Harrison, 4" disk 'Section Corner'

Depth: Two inches above adjoining grade

Indiana tie card references:

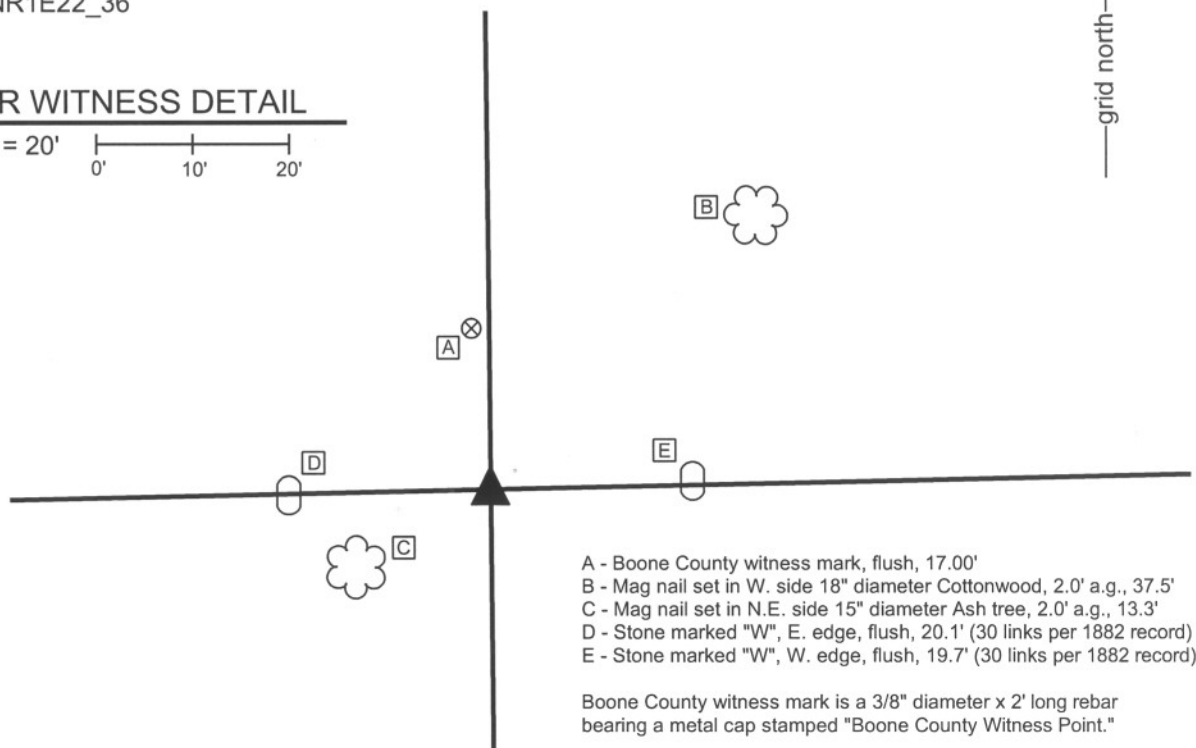
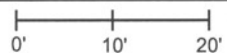
IN02_T18NR1E21_44

IN02_T18NR1E22_36



CORNER WITNESS DETAIL

SCALE 1" = 20'



- A - Boone County witness mark, flush, 17.00'
- B - Mag nail set in W. side 18" diameter Cottonwood, 2.0' a.g., 37.5'
- C - Mag nail set in N.E. side 15" diameter Ash tree, 2.0' a.g., 13.3'
- D - Stone marked "W", E. edge, flush, 20.1' (30 links per 1882 record)
- E - Stone marked "W", W. edge, flush, 19.7' (30 links per 1882 record)

Boone County witness mark is a 3/8" diameter x 2' long rebar bearing a metal cap stamped "Boone County Witness Point."

The harrison monument was set in place of a rebar found and in the approximate reconstructed position of a former stone. A BCS record of April 6, 1882 states "stone set from Gov. wit. marked +. Stone Wit. marked W East 30 links. Stone Wit. marked W West 30 links." This corner was excavated on September 18, 2008. Prior to excavation a 5/8 inch diameter rebar was found at the north edge of an old wood corner post. The post was rotted off at the ground and was only standing by means of being suspended by fencing to the east, west and south. The top portion of the post was removed. Excavation revealed various rocks which appeared to be witness rocks. The stone marked "+" was not found, nor were any stones which appeared to be a section corner monument. However, both of the witness stones referenced in the 1882 record were found. Each one was underneath the east-west fencing, approximately flush with the surface of the ground, though buried under debris collected at the bottom of the fence. Each stone had a clearly defined "W" etched on the side. In both cases the etched "W" was on the side of the stone facing the corner. The position of the rebar had been approximately on line between the two witness stone and very close to the midpoint between them. Reconstructing the position of the record stone from the witness stones, it appears that the record stone was likely removed before or during installation of the wood corner post. The rebar, removed during excavation, had been approximately 0.2 foot east of the position reconstructed for the position of the stone from the witness stones. As the rebar was so close to the reconstructed position of the stone, and was present prior to excavation while the stone was not found, the position of the physical monument was held and the harrison monument was set in place of the rebar. This corner was originally established as a wood post in June, 1820.



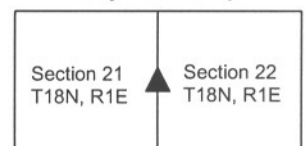
Kenneth E. Hedge
Kenneth E. Hedge, County Surveyor

James S. Swift

James S. Swift, IN LS 20200054

July 14, 2010

Perry Township



SECTION CORNER RECORD

SE 350-400

BOONE COUNTY SURVEYOR'S OFFICE

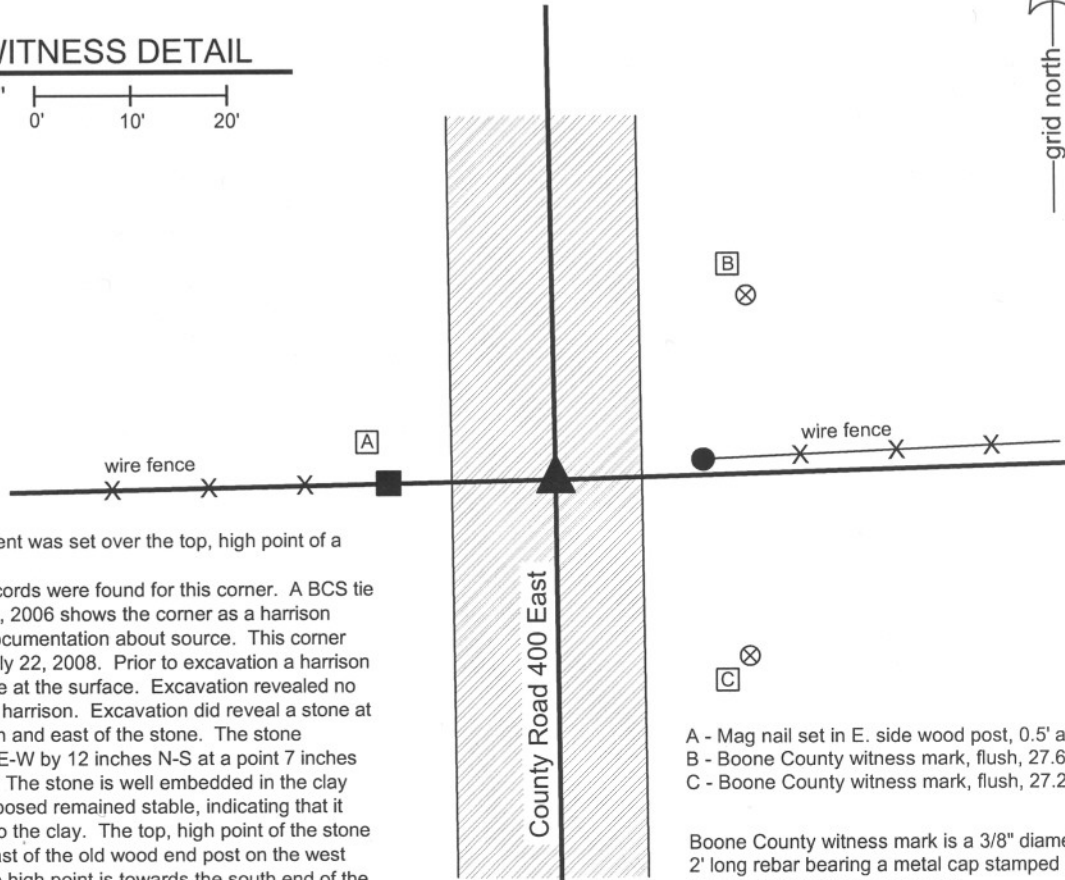
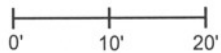
State Plane grid coordinates NAD83 (NSRS 2007):
North: 1727576.78 East: 3145941.46 (U.S. survey feet)

Type of monument: Harrison, 4" disk 'Section Corner'
Depth: One inch below adjacent road surface

Indiana tie card references:
IN02_T18NR1E22_44
IN02_T18NR1E23_36

CORNER WITNESS DETAIL

SCALE 1" = 20'



The harrison monument was set over the top, high point of a stone found. No old BCS stone records were found for this corner. A BCS tie card dated January 2, 2006 shows the corner as a harrison monument with no documentation about source. This corner was excavated on July 22, 2008. Prior to excavation a harrison monument was visible at the surface. Excavation revealed no monument below the harrison. Excavation did reveal a stone at 12 inches deep, south and east of the stone. The stone measures 12 inches E-W by 12 inches N-S at a point 7 inches below the high point. The stone is well embedded in the clay and with 7 inches exposed remained stable, indicating that it penetrates further into the clay. The top, high point of the stone is 1 rod (16.5 feet) east of the old wood end post on the west side of the road. The high point is towards the south end of the stone. A harrison monument was set over the high point. The old harrison, removed during excavation, was 0.6 foot North and 0.8 foot West of the top, high point of the stone. This corner was originally established as a wood post in June, 1820.

- A - Mag nail set in E. side wood post, 0.5' a.g., 16.4'
- B - Boone County witness mark, flush, 27.62'
- C - Boone County witness mark, flush, 27.27'

Boone County witness mark is a 3/8" diameter x 2' long rebar bearing a metal cap stamped "Boone County Witness Point."



Kenneth E. Hedge
Kenneth E. Hedge, County Surveyor

James S. Swift
James S. Swift, IN LS 20200054
March 11, 2009

Perry Twp Worth Twp	
Section 22 T18N, R1E	Section 23 T18N, R1E

PHOTOGRAPHIC DOCUMENTATION

Date of photography: July 22, 2008

View from north looking south across the stone and along County Road 400 East to the south.



Corner stone.



View from east looking west across stone to wood post at east end of old fence.



View from west looking east to concrete post and fence line.



For details and documentation, refer to related sheet "Section Corner Record."

SECTION CORNER RECORD

SE 400-300

BOONE COUNTY SURVEYOR'S OFFICE

State Plane grid coordinates NAD83 (NSRS 2007):

North: 1724808.96 East: 3140643.24 (U.S. survey feet)

Type of monument: Harrison, 4" disk 'Section Corner'

Depth: 1 inch below adjacent road surface

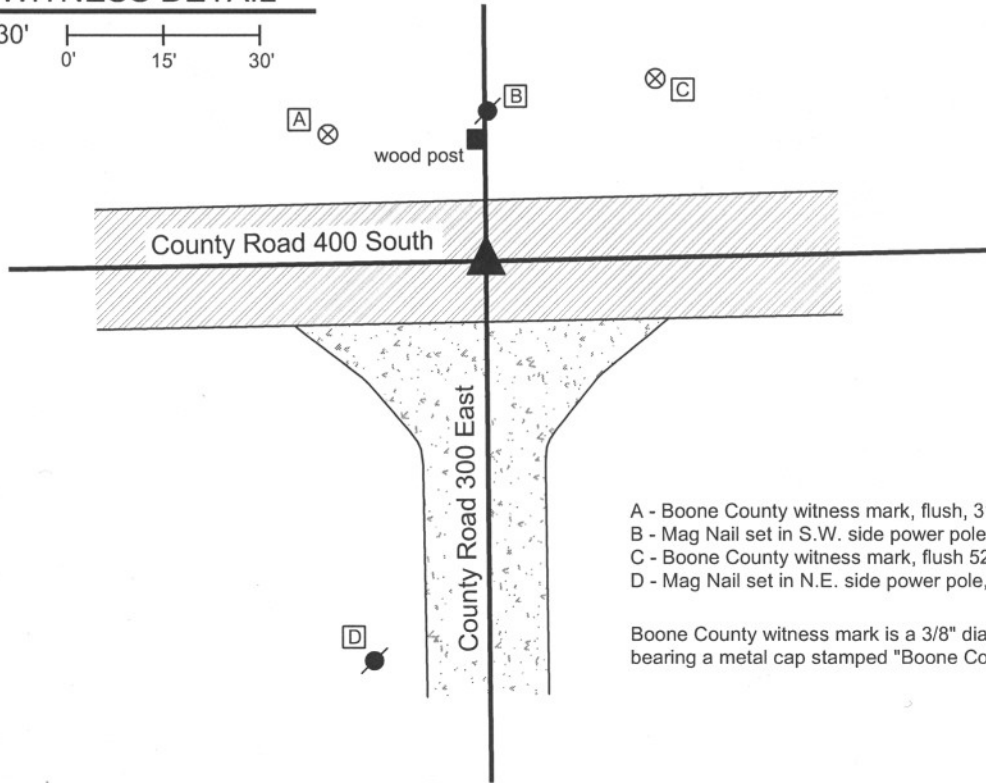
Indiana tie card references:

IN02_T18NR1E21_80 IN02_T18NR1E22_72

IN02_T18NR1E27_00 IN02_T18NR1E28_08

CORNER WITNESS DETAIL

SCALE 1" = 30'



- A - Boone County witness mark, flush, 31.77'
- B - Mag Nail set in S.W. side power pole, 2.0' a.g., 22.04'
- C - Boone County witness mark, flush 52.32'
- D - Mag Nail set in N.E. side power pole, 2.0' a.g., 63.68'

Boone County witness mark is a 3/8" diameter x 2' long rebar bearing a metal cap stamped "Boone County Witness Point."

The harrison monument was set directly over the top, center of a stone found and accepted as marking the corner.

No BCS stone records or tie cards are known for this corner beyond the original establishment of the corner by federal surveyors.

This corner was excavated on May 16, 2008. Prior to excavation a mag nail was visible flush with the road surface at the approximate intersection of the two county roads. Excavation yielded an iron pipe below and slightly N.E. of the mag nail. Further excavation yielded a stone found at 24 inches. This stone measures 14 inches NW-SE and 10 inches NE-SW. The top 6 inches of the stone were exposed at which point the stone remained entirely stable in the clay, indicating that it protrudes deeper into the clay. The top 2 inches of the stone protrude into the gravel base at the bottom of the road. The harrison was set directly over the top, center of the stone. The mag nail was 0.55 foot North and 1.25 foot West of the top, center of the stone and the pipe was 0.85 North and 1.1 foot West.

This corner was originally established as a wood post in June, 1820.



Kenneth E. Hedge
 Kenneth E. Hedge, County Surveyor

James S. Swift
 James S. Swift, IN LS 20200054
 March 11, 2009

Perry Township

Section 21 T18N, R1E	Section 22 T18N, R1E
Section 28 T18N, R1E	Section 27 T18N, R1E

PHOTOGRAPHIC DOCUMENTATION

Date of photography: May 16, 2008

Corner stone - overhead view from south.



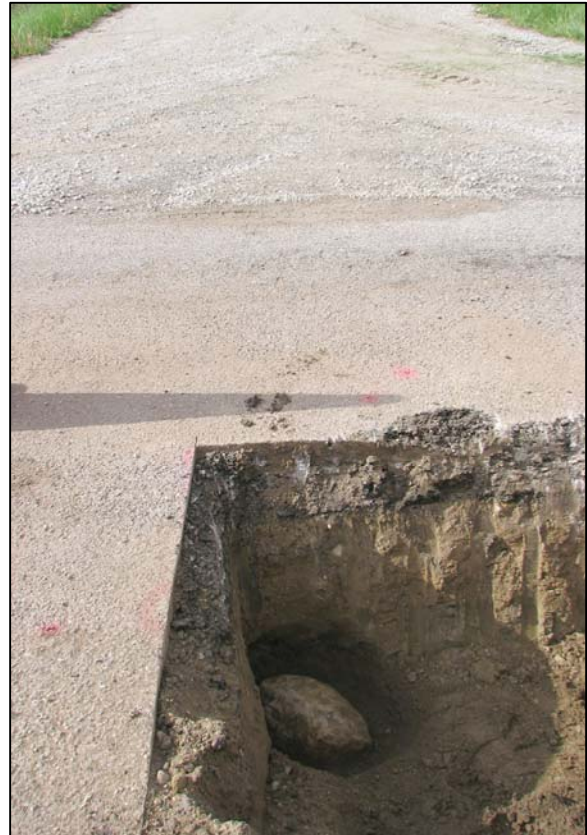
Corner stone - overhead view from west.



View from west, looking across corner stone and along County Road 400 South to the east.



View from north, looking across corner stone to north end of County Road 300 East to the south.



For details and documentation, refer to related sheet "Section Corner Record."

SECTION CORNER RECORD

SE 400-350

BOONE COUNTY SURVEYOR'S OFFICE

State Plane grid coordinates NAD83 (NSRS 2007):

North: 1724863.53 East: 3143309.18 (U.S. survey feet)

Type of monument: Harrison, 4" disk 'Section Corner'

Depth: One inch below adjacent road surface

Indiana tie card references:

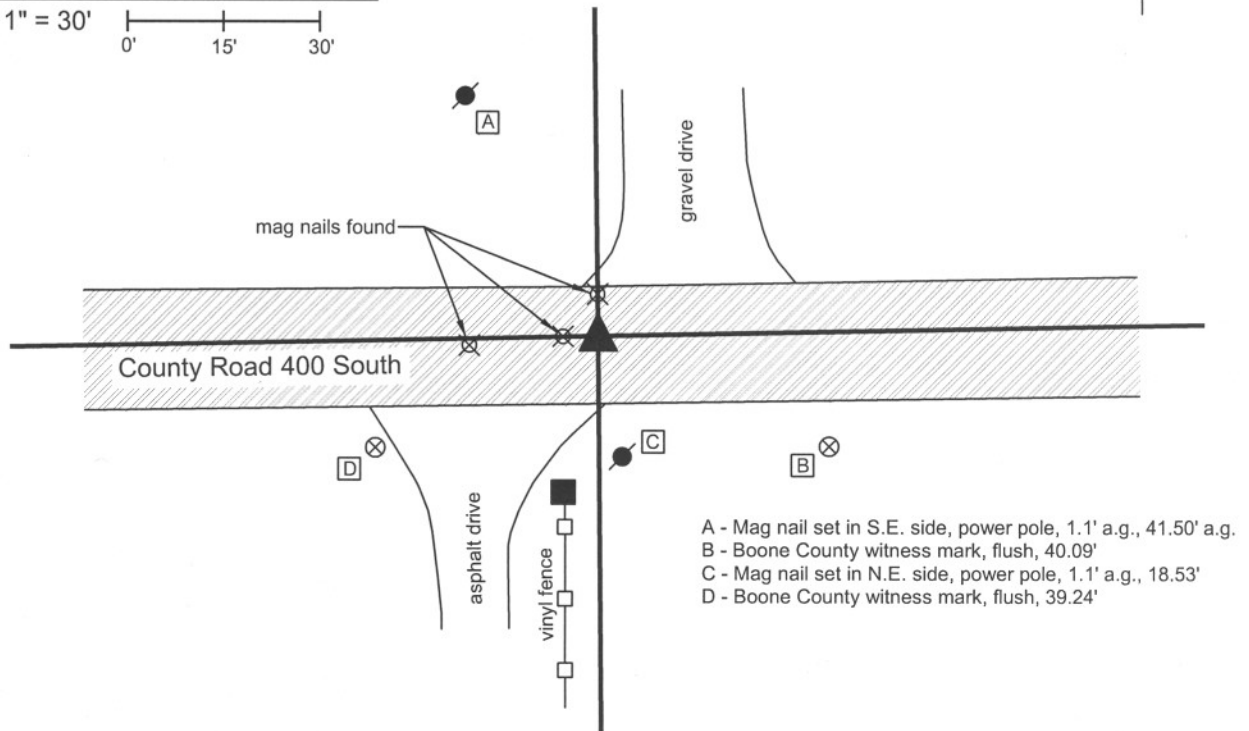
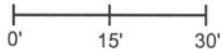
IN02_T18NR1E22_76

IN02_T18NR1E27_04

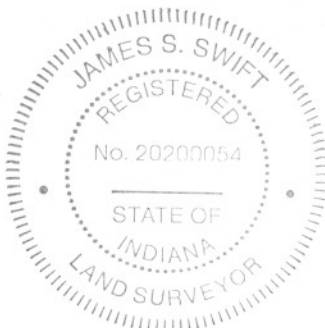


CORNER WITNESS DETAIL

SCALE 1" = 30'



The harrison monument was set over the top, high point of a stone found and accepted as marking the corner. No previous BCS stone records or tie cards were found for this corner. This corner was excavated on May 19, 2008. Prior to excavation, 2 mag nails were visible in the vicinity of the corner, but neither fit with the location shown on private surveys. Metal detection and minor excavation in the immediate vicinity of the corner shown on private surveys yielded a railroad spike several inches below grade. Excavation centered on the railroad spike yielded a stone, 11 inches by 11 inches by 11 inches at 12 inches deep. This stone was in the gravel road base, not in the clay. It was removed and another stone was found below it at 30 inches deep. The second stone is 14 inches E-W by 14 inches N-S, well embedded in the clay at the bottom of the gravel base of the road bed. The top 6 inches of the stone were exposed at which point the stone remained entirely stable in the clay indicating that it protrudes deep into the clay. The harrison monument was set directly over the high point of the top of the stone which is approximately the southeast corner of the top of the stone. The railroad spike was 1.1 foot south and 0.2 foot east of the high point. This corner was originally established as a wood post in June, 1820.



Kenneth E. Hedge
Kenneth E. Hedge, County Surveyor

James S. Swift
James S. Swift, IN LS 20200054
March 11, 2009

Perry Twp

Section 22 T18N, R1E
▲
Section 27 T18N, R1E

PHOTOGRAPHIC DOCUMENTATION

Date of photography: May 19, 2008

Upper corner stone - overhead view from west.



Upper corner stone - overhead view from north.



Lower corner stone - overhead view from west.



Lower corner stone - close up.



View from east, looking across hole and along County Road 400 South to the east. The upper stone is visible on the road surface.



For details and documentation, refer to related sheet "Section Corner Record."

SECTION CORNER RECORD

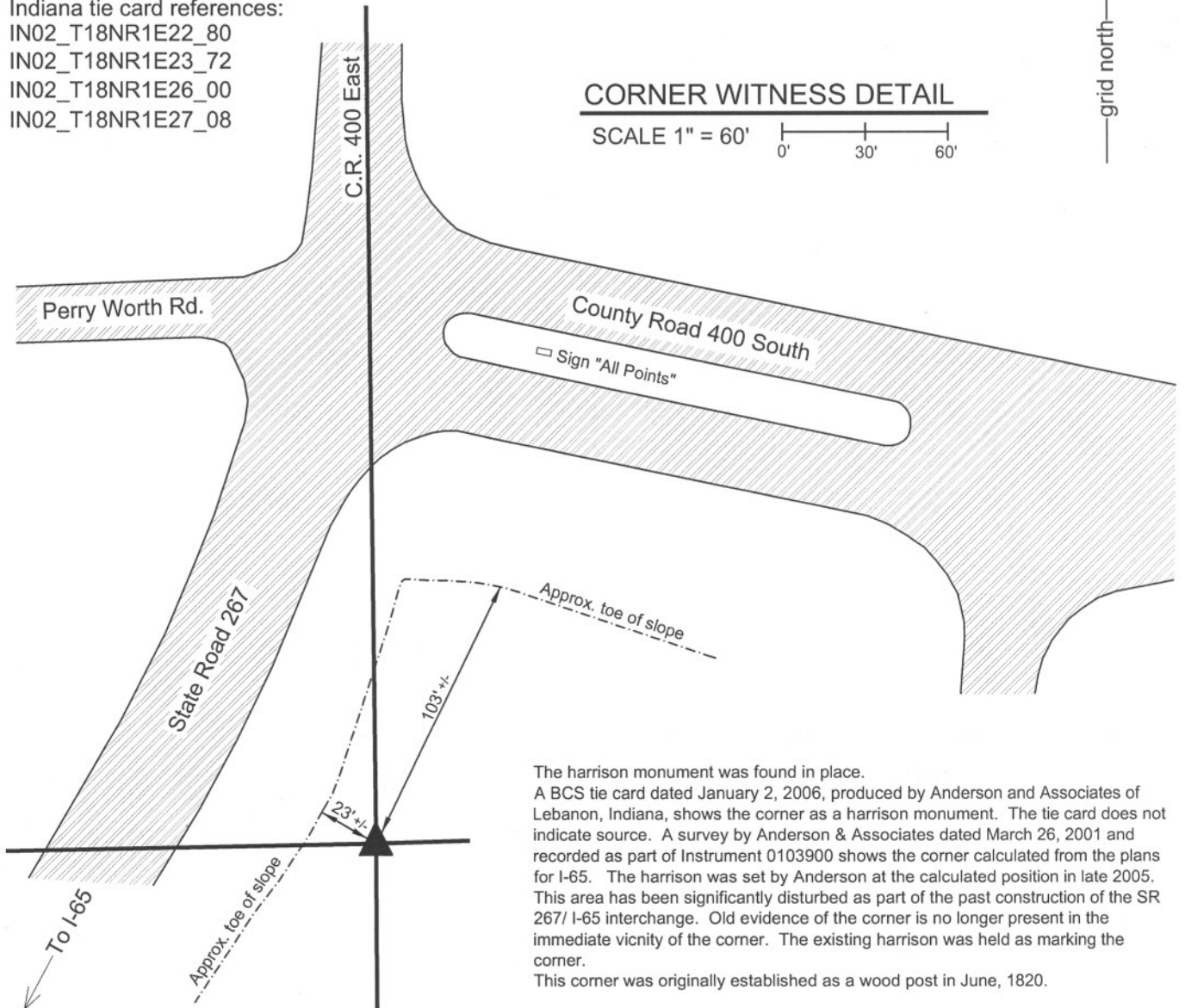
SE 400-400

BOONE COUNTY SURVEYOR'S OFFICE

State Plane grid coordinates NAD83 (NSRS 2007):
North: 1724913.90 East: 3145969.14 (U.S. survey feet)

Type of monument: Harrison, 4" disk 'Section Corner'
Depth: flush with adjacent ground

Indiana tie card references:
IN02_T18NR1E22_80
IN02_T18NR1E23_72
IN02_T18NR1E26_00
IN02_T18NR1E27_08



The harrison monument was found in place. A BCS tie card dated January 2, 2006, produced by Anderson and Associates of Lebanon, Indiana, shows the corner as a harrison monument. The tie card does not indicate source. A survey by Anderson & Associates dated March 26, 2001 and recorded as part of Instrument 0103900 shows the corner calculated from the plans for I-65. The harrison was set by Anderson at the calculated position in late 2005. This area has been significantly disturbed as part of the past construction of the SR 267/ I-65 interchange. Old evidence of the corner is no longer present in the immediate vicinity of the corner. The existing harrison was held as marking the corner. This corner was originally established as a wood post in June, 1820.



Kenneth E. Hedge
Kenneth E. Hedge, County Surveyor

James S. Swift
James S. Swift, IN LS 20200054
March 11, 2009

Perry Twp Worth Twp

Section 22 T18N, R1E	Section 23 T18N, R1E
Section 27 T18N, R1E	Section 26 T18N, R1E