

SECTION CORNER RECORD

NW 800-950

BOONE COUNTY SURVEYOR'S OFFICE

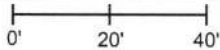
State Plane grid coordinates NAD83 (2011):
North: 1788065.72 East: 3074525.69 (U.S. survey feet)

Type of monument: Harrison, 4" disk 'Section Corner'
Depth: One inch below adjacent road surface

Indiana tie card references:
IN02_T20NR2W21_76 IN02_T20NR2E28_04

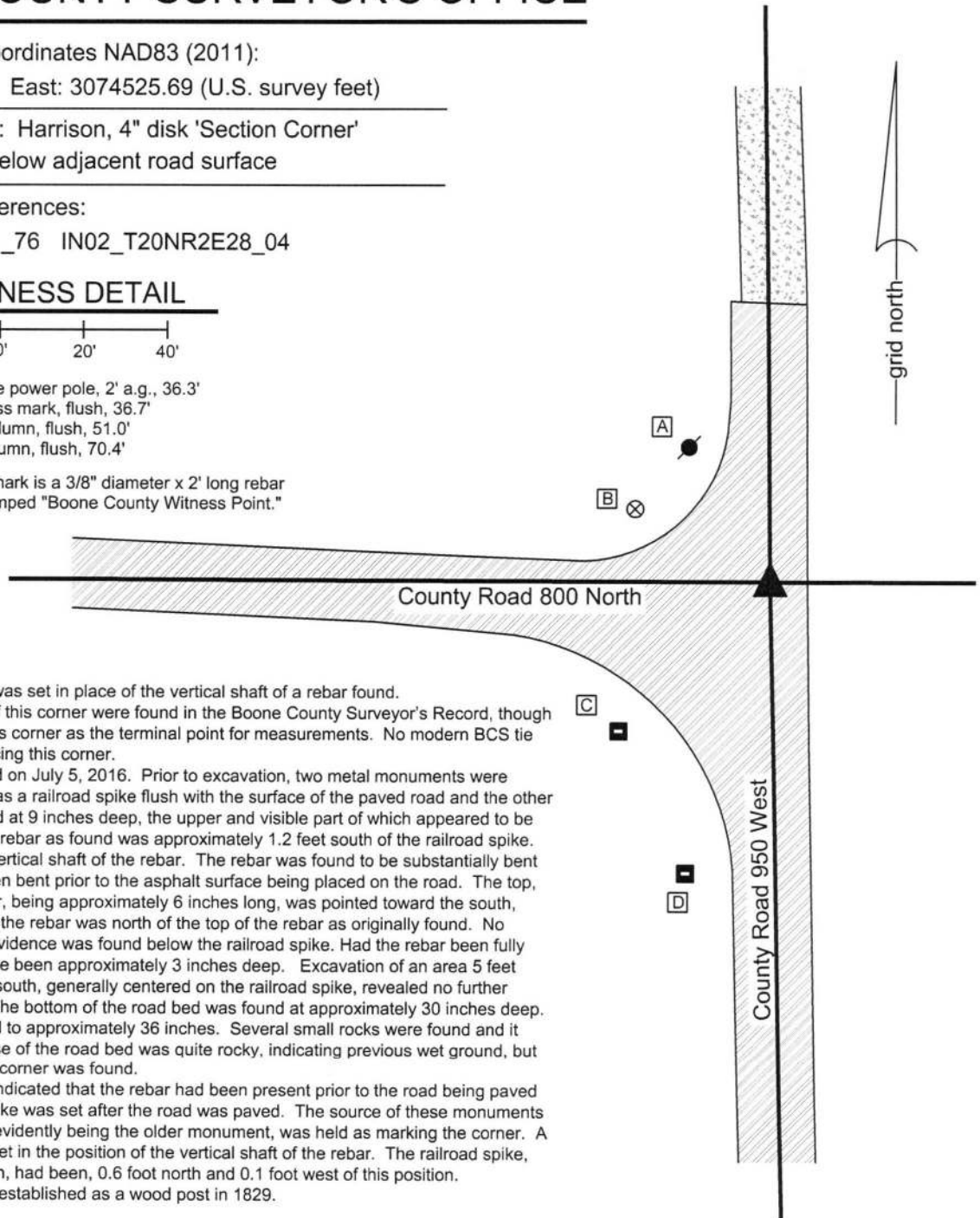
CORNER WITNESS DETAIL

SCALE 1" = 40'



- A - Mag nail set in S. side power pole, 2' a.g., 36.3'
- B - Boone County witness mark, flush, 36.7'
- C - N.W. corner brick column, flush, 51.0'
- D - N.E. corner brick column, flush, 70.4'

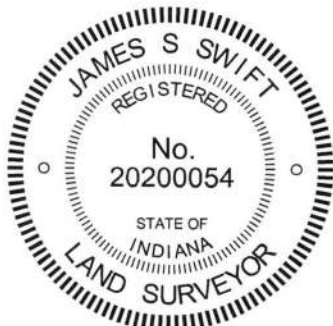
Boone County witness mark is a 3/8" diameter x 2' long rebar bearing a metal cap stamped "Boone County Witness Point."



The Harrison monument was set in place of the vertical shaft of a rebar found. No specific descriptions of this corner were found in the Boone County Surveyor's Record, though several entries do note this corner as the terminal point for measurements. No modern BCS tie cards were found referencing this corner.

Excavation was performed on July 5, 2016. Prior to excavation, two metal monuments were found. One monument was a railroad spike flush with the surface of the paved road and the other was a 5/8 inch rebar found at 9 inches deep, the upper and visible part of which appeared to be horizontal. The top of the rebar as found was approximately 1.2 feet south of the railroad spike. Excavation revealed the vertical shaft of the rebar. The rebar was found to be substantially bent and appeared to have been bent prior to the asphalt surface being placed on the road. The top, horizontal part of the rebar, being approximately 6 inches long, was pointed toward the south, hence the vertical shaft of the rebar was north of the top of the rebar as originally found. No monumentation or other evidence was found below the railroad spike. Had the rebar been fully vertical, the top would have been approximately 3 inches deep. Excavation of an area 5 feet east-west by 7 feet north-south, generally centered on the railroad spike, revealed no further evidence of the corner. The bottom of the road bed was found at approximately 30 inches deep. Excavation was performed to approximately 36 inches. Several small rocks were found and it was observed that the base of the road bed was quite rocky, indicating previous wet ground, but no further evidence of the corner was found.

The evidence in the field indicated that the rebar had been present prior to the road being paved and clearly the railroad spike was set after the road was paved. The source of these monuments is not known. The rebar, evidently being the older monument, was held as marking the corner. A Harrison monument was set in the position of the vertical shaft of the rebar. The railroad spike, removed during excavation, had been, 0.6 foot north and 0.1 foot west of this position. This corner was originally established as a wood post in 1829.



Kenneth E. Hedge
Kenneth E. Hedge, County Surveyor

James S. Swift
James S. Swift, IN LS 20200054

March 23, 2017

Sugar Creek Township

Section 21
T20N, R2W

▲
Section 28
T20N, R2W

SECTION CORNER RECORD

NW 850-900

BOONE COUNTY SURVEYOR'S OFFICE

State Plane grid coordinates NAD83 (2011):

Corner (Post): North: 1790684.38 East: 3077164.99 (U.S. survey feet)

Witness (Rebar): North: 1790683.52 East: 3077164.99 (U.S. survey feet)

Corner Monument: 9 inch round wood post


Witness monument: 5/8" rebar with metal cap stamped 'Boone County Surveyor'

Indiana tie card references:

IN02_T20NR2W21_44 IN02_T20NR2W22_36

CORNER WITNESS DETAIL

SCALE 1" = 40'



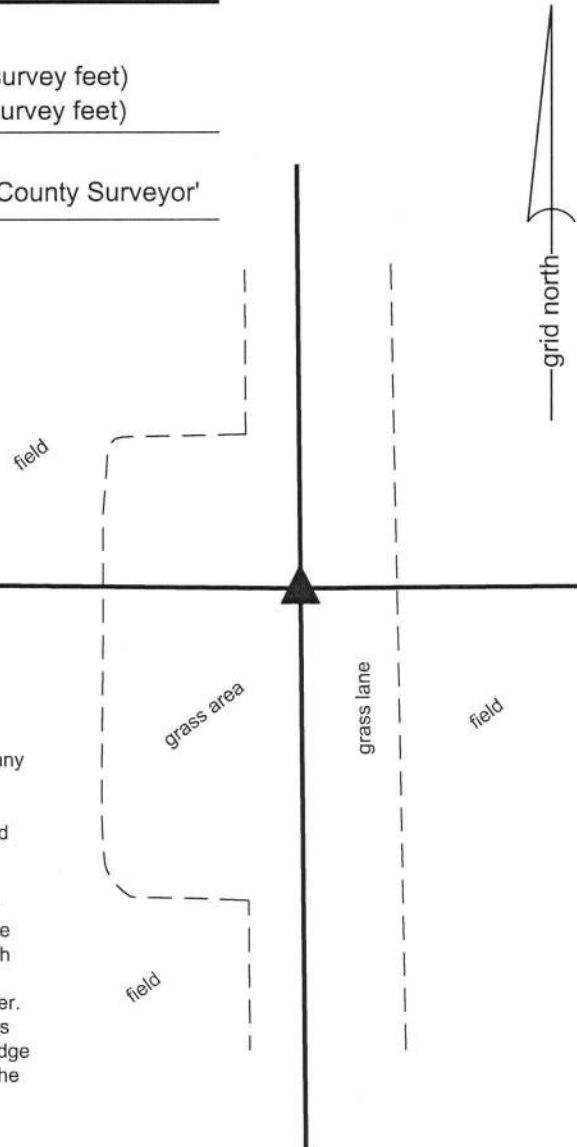
The wood post is witnessed by a 5/8 inch rebar with metal cap stamped 'Boone County Surveyor' set on the south edge of the post. The post is held as the corner and the rebar is an accessory witness to the corner. No distance ties are provided.

The wood corner post was found in place.

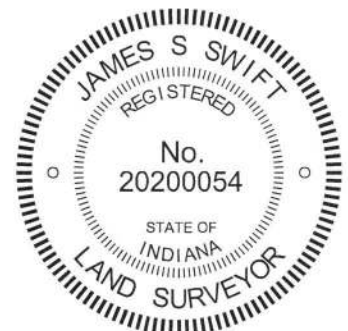
No specific descriptions of this corner were found in the BCS Surveyor's Record beyond the original establishment of the corner as a wood post in 1829 nor were any recent BCS tie cards or recorded surveys found referencing the corner.


Excavation at this corner was performed on October 30, 2018. A 9 inch diameter round wood post was found with attached fence cut-off toward the north, south and east. The post is along the west edge of a grass lane, in-line with several posts found to the north. The post appears to be very old and the position of the post works well with the relative positions of proximate corners. Ronald Merrill, owner and farmer of the adjacent land to the east, testifies that this post is known to be the old corner post and that old, standing fences did previously bear to the north, south and east from the post. Excavation around the base of the post revealed several small rocks, none of which appeared to have been purposely set to mark the corner. The post was accepted as the best available evidence of the corner. The post was left in place and a 30 inch length of 5/8 inch diameter rebar was set at the south edge of the post. The rebar is intended to act as a witness for the post. The center of the post is held as marking the corner.

This corner was originally established as a wood post in 1829.




Kenneth E. Hedge, County Surveyor




James S. Swift, IN LS 20200054

January 9, 2019

Sugar Creek Twp

Section 21 T20N, R2W	Section 22 T20N, R2W
-------------------------	-------------------------

SECTION CORNER RECORD

NW 850-1000

BOONE COUNTY SURVEYOR'S OFFICE

State Plane grid coordinates NAD83 (2011):

North: 1790738.09 East: 3071849.42 (U.S. survey feet)

Type of monument: Harrison, 4" disk 'Section Corner'

Depth: Flush with adjacent ground

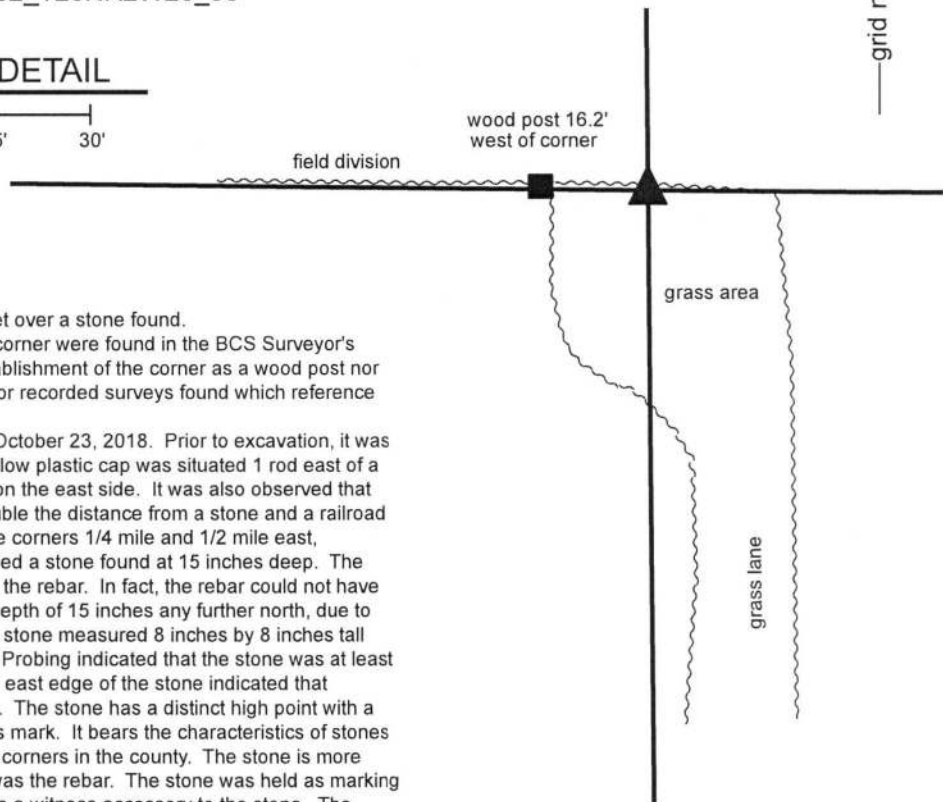
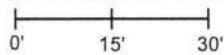
Indiana tie card references:

IN02_T20NR2W20_4 IN02_T20NR2W20_36



CORNER WITNESS DETAIL

SCALE 1" = 30'



The Harrison monument was set over a stone found.

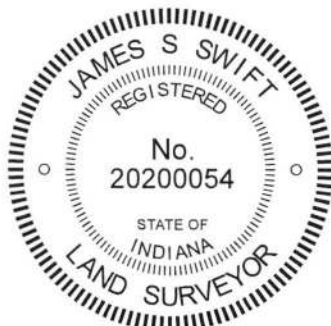
No specific descriptions of this corner were found in the BCS Surveyor's Record beyond the original establishment of the corner as a wood post nor were any recent BCS tie cards or recorded surveys found which reference the corner.

This corner was excavated on October 23, 2018. Prior to excavation, it was observed that a rebar with a yellow plastic cap was situated 1 rod east of a wood post with gate hardware on the east side. It was also observed that this rebar was very close to double the distance from a stone and a railroad spike providing evidence of the corners 1/4 mile and 1/2 mile east, respectively. Excavation revealed a stone found at 15 inches deep. The stone was immediately north of the rebar. In fact, the rebar could not have been driven beyond a depth of 15 inches any further north, due to the presence of the stone. The stone measured 8 inches by 8 inches tall with the top 4 inches exposed. Probing indicated that the stone was at least 8 inches tall. Probing along the east edge of the stone indicated that another stone is situated below. The stone has a distinct high point with a single etched mark but no cross mark. It bears the characteristics of stones found marking numerous other corners in the county. The stone is more in-line with the gate post than was the rebar. The stone was held as marking the corner and the rebar held as a witness accessory to the stone. The rebar was driven deeper along the side of the stone. Additional rebar was driven around the stone, the top 4 inches of the stone were encased in concrete, and a Harrison Monument was set directly over the high point of the stone. It is noted that the position of the corner fits well with the local evidence in the form of the gate post 1 rod west and the east edge of a grass lane approximately 1 rod east.

Prior to being driven deeper and incorporated into the overall monument, the rebar with yellow cap had been flush and 0.4 foot south of the position of the final monument. A stone was also found at the surface of the ground approximately 6 feet west of the corner. This stone did not fit the characteristics of a purposely set corner stone and is not considered evidence of the corner.

This corner was originally established as a wood post in 1829.

This Harrison monument is situated at the edge of a grass area to the south, 16.2 feet east of a wood post. The monument is approximately flush with the ground and witnessed by an orange fiberglass lathe stamped 'Survey Marker.' No other appropriate objects are available to provide distance ties.

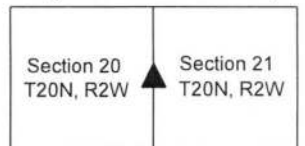


Kenneth E. Hedge
Kenneth E. Hedge, County Surveyor

James S. Swift
James S. Swift, IN LS 20200054

November 7, 2018

Sugar Creek Township



SECTION CORNER RECORD

NW 900-900

BOONE COUNTY SURVEYOR'S OFFICE

State Plane grid coordinates NAD83 (2011):

North: 1793352.60 East: 3077140.94 (U.S. survey feet)

Type of monument: Harrison, 4" disk 'Section Corner'

Depth: Six inches below adjacent gravel road surface

Indiana tie card references:

IN02_T20NR2W16_80 IN02_T20NR2W15_72

IN02_T20NR2W21_08 IN02_T20NR2W22_00

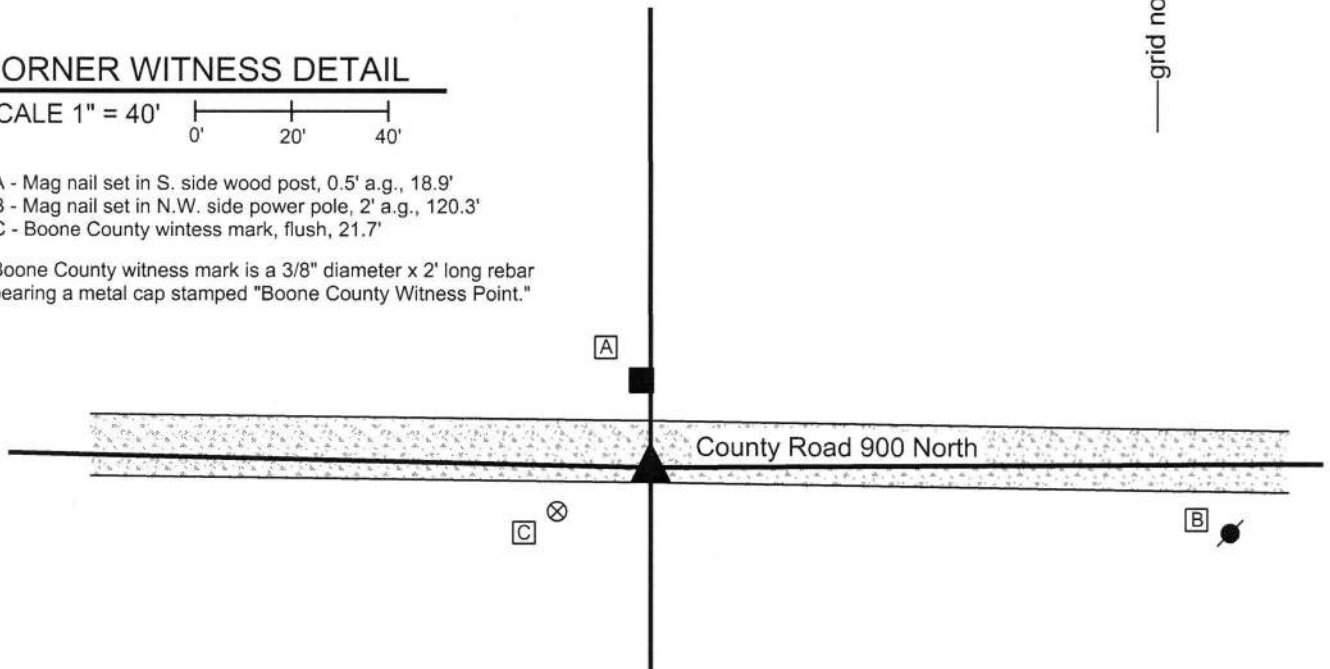


CORNER WITNESS DETAIL

SCALE 1" = 40'

- A - Mag nail set in S. side wood post, 0.5' a.g., 18.9'
- B - Mag nail set in N.W. side power pole, 2' a.g., 120.3'
- C - Boone County witness mark, flush, 21.7'

Boone County witness mark is a 3/8" diameter x 2' long rebar bearing a metal cap stamped "Boone County Witness Point."



The Harrison monument was set over a stone found.

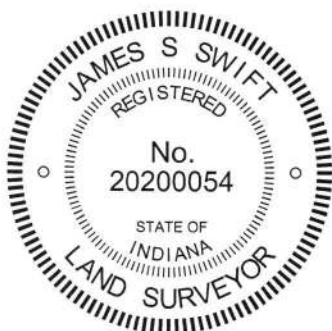
A BCS record dated March 29-31, 1858 references this corner as a Rock 12, 16, noting that the corner was "Reestablished from old Wit tree." No recent BCS tie cards were found referencing this corner.

Excavation was performed at this corner on June 24, 2016. Prior to excavation, a 5/8 inch diameter rebar was found at 1 inch deep in the gravel road, slightly bent at the top. Excavation revealed the rock described in the 1858 record at 13 inches deep.

With the top 6 inches of the stone exposed, it measured 12 inches NW-SE and 15 inches NE-SW, and appeared substantially larger in the vertical dimension. The stone was embedded in the clay layer below the road, protruding slightly into the bottom of the road bed. The top of the stone, as found, was not oriented in cardinal directions. It is noted that the adjacent corner 1/2 mile to the east, set during the same survey, was also not oriented in cardinal directions. No distinct marks were found on the stone nor does it have a distinct high point. The two dimensions measured on the stone match closely with the 1858 record and the stone was held as marking the corner. The center of the top of the stone was held as the specific position of the corner and a Harrison monument was set over this point. The top of the stone was embedded in concrete.

The rebar found prior to excavation and removed during excavation had been 0.5 foot north and 2.2 feet west of the top, center of the stone.

This corner was originally established as a wood post in 1829.



Kenneth E. Hedge, County Surveyor

James S. Swift, IN LS 20200054
March 23, 2017

Sugar Creek Township

Section 16 T20N, R2W	Section 15 T20N, R2W
Section 21 T20N, R2W	Section 22 T20N, R2W

PHOTOGRAPHIC DOCUMENTATION

Date of photography: June 24, 2016

The stone as it was originally exposed.



View looking across the stone to the post on the north side of County Road 900 North.



The stone from above, washed.



For details and documentation, refer to related sheet "Section Corner Record."

SECTION CORNER RECORD

NW 900-950

BOONE COUNTY SURVEYOR'S OFFICE

State Plane grid coordinates NAD83 (2011):

North: 1793412.78 East: 3074466.62 (U.S. survey feet)

Type of monument: Harrison, 4" disk 'Section Corner'

Depth: Six inches below adjacent gravel road surface

Indiana tie card references:

IN02_T20NR2W16_76

IN02_T20NR2W21_04

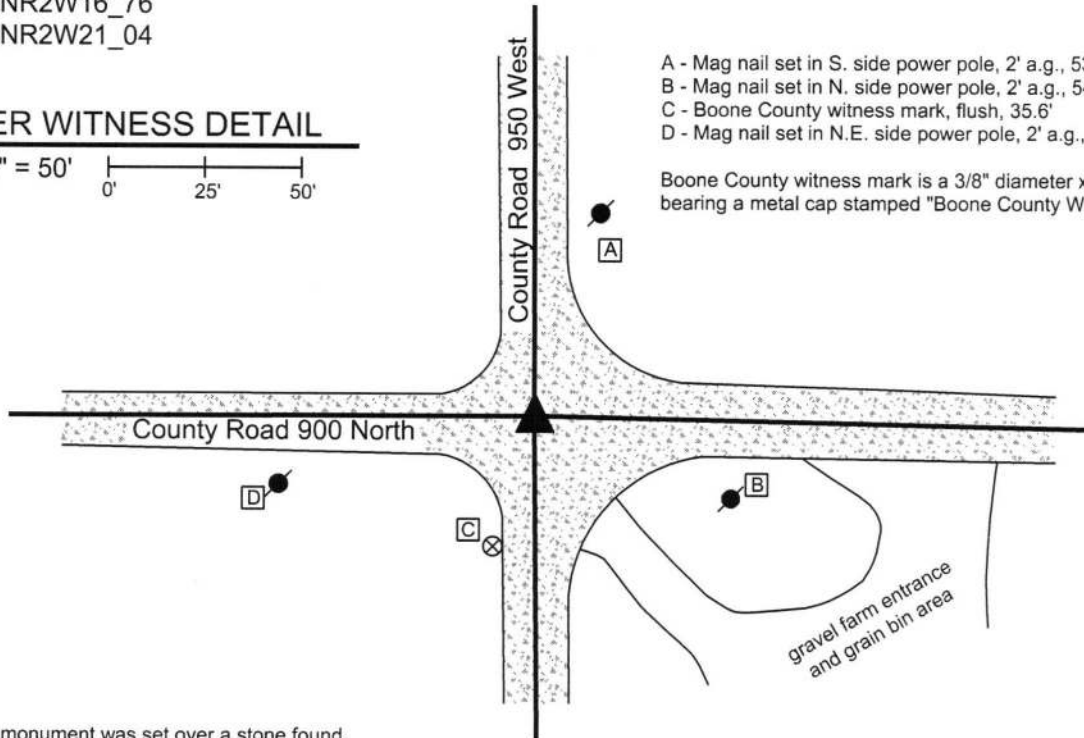
CORNER WITNESS DETAIL

SCALE 1" = 50'



- A - Mag nail set in S. side power pole, 2' a.g., 53.2'
- B - Mag nail set in N. side power pole, 2' a.g., 54.6'
- C - Boone County witness mark, flush, 35.6'
- D - Mag nail set in N.E. side power pole, 2' a.g., 67.1'

Boone County witness mark is a 3/8" diameter x 2' long rebar bearing a metal cap stamped "Boone County Witness Point."



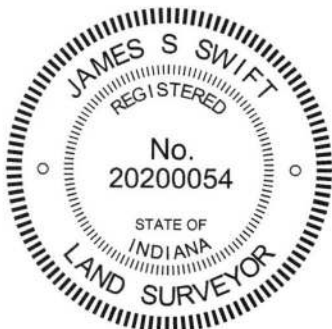
The Harrison monument was set over a stone found.

A BCS record dated March 29-31, 1858 references this corner as a Rock 14x24, noting that the corner was "Reestablished from old wit tree Beech." No recent BCS tie cards were found referencing this corner.

Excavation was performed at this corner on June 23, 2016. Prior to excavation, a 5/8 inch diameter rebar was found at 2 inches deep in the gravel road. Excavation revealed a stone found at 6 inches deep, south and west of the rebar. This stone was found to be 10 inches tall by 8 inches N-S by 6 inches E-W. The stone was vertical but only slightly embedded in the clay layer below the road. Most of the stone was situated within the fill material of the road. This stone was not held as marking the corner. Further excavation revealed another stone found at 21 inches deep, north and slightly east of the rebar. This stone was fully embedded in the clay layer below the road with the top of the stone being coincident with the bottom of the road bed. The stone was not oriented in cardinal directions. With the top 8 inches of the stone exposed, it measured 8 inches NW-SE by 14 inches NE-SW and was clearly much larger in the vertical dimension. It is noted that the stone found at the adjoining corner 1/2 mile to the east, set as part of the same 1858 survey, was also not oriented in cardinal directions. Although the stone, as measured, matched only one of the two dimensions, it is expected that the second dimension is the vertical dimension. The characteristics of the stone, being vertical and embedded in the clay layer below the road, match those of many other corner stones found throughout the county. The orientation off cardinal directions also matches the characteristics of the stone found at the corner to the east, as noted above. The stone was held as marking the corner and a Harrison monument was set directly over the top of the stone.

The rebar, removed during excavation, had been situated along the southwestern edge of the stone, specifically 0.6 foot south and 0.2 foot west of the center of the rock and point held as the corner.

This corner was originally established as a wood post in 1829.



Kenneth E. Hedge

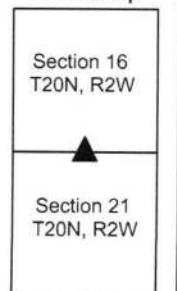
 Kenneth E. Hedge, County Surveyor

James S. Swift

 James S. Swift, IN LS 20200054

March 23, 2017

Sugar Creek Township



PHOTOGRAPHIC DOCUMENTATION

Date of photography: June 23, 2016

View from the east looking across the stone and west along County Road 900 North.



The first stone found (not held) and the rebar.



The corner stone as it was originally exposed.



The corner stone more fully originally exposed.



For details and documentation, refer to related sheet "Section Corner Record."

SECTION CORNER RECORD

NW 900-1000

BOONE COUNTY SURVEYOR'S OFFICE

State Plane grid coordinates NAD83 (2011):

North: 1793409.26 East: 3071827.77 (U.S. survey feet)

Type of monument: Harrison, 4" disk 'Section Corner'

Depth: Four inches below adjacent gravel road surface

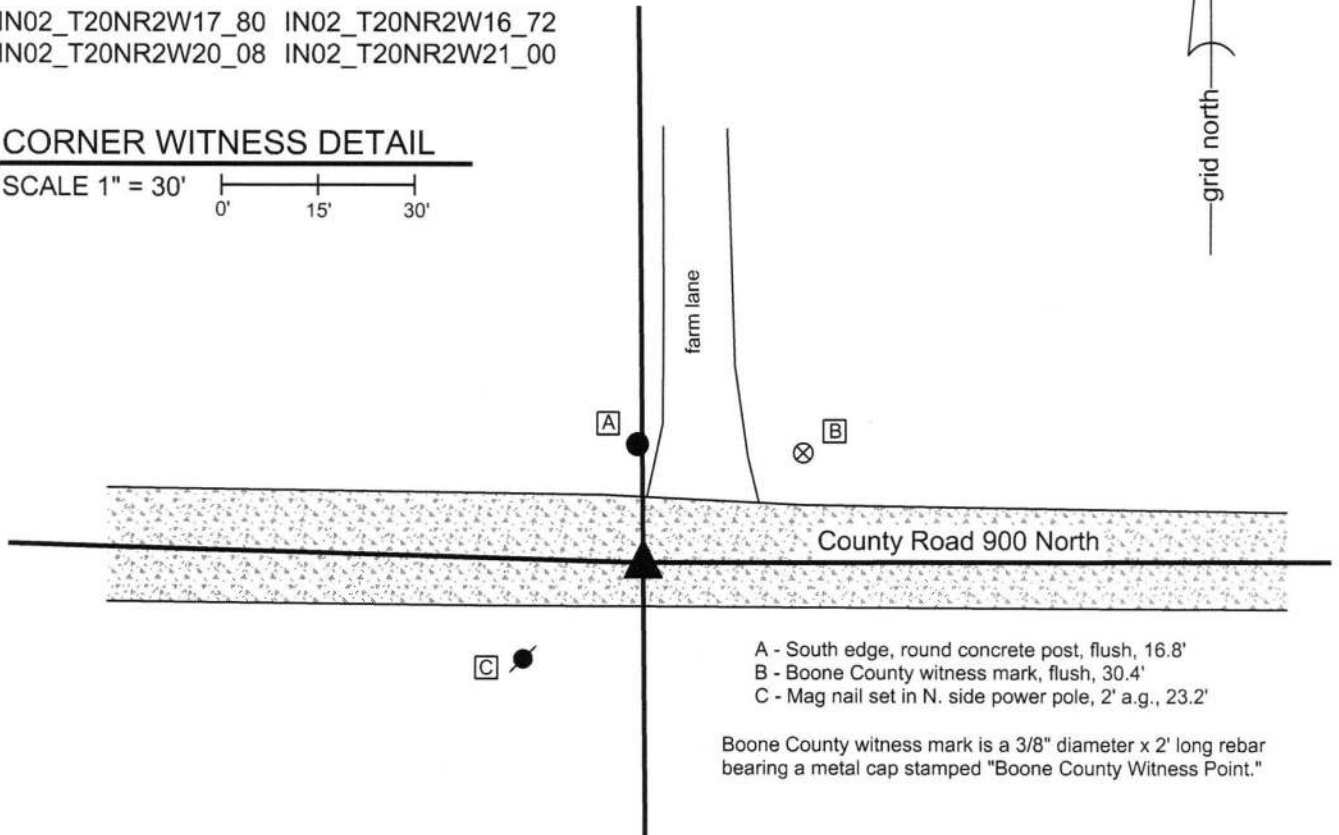
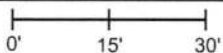
Indiana tie card references:

IN02_T20NR2W17_80 IN02_T20NR2W16_72

IN02_T20NR2W20_08 IN02_T20NR2W21_00

CORNER WITNESS DETAIL

SCALE 1" = 30'



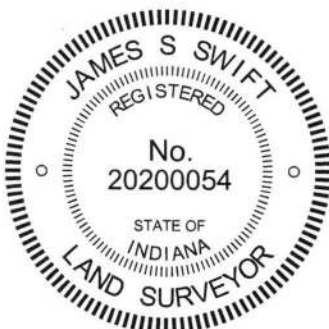
- A - South edge, round concrete post, flush, 16.8'
- B - Boone County witness mark, flush, 30.4'
- C - Mag nail set in N. side power pole, 2' a.g., 23.2'

Boone County witness mark is a 3/8" diameter x 2' long rebar bearing a metal cap stamped "Boone County Witness Point."


The Harrison monument was set over a stone found.

No specific descriptions of this corner were found in the BCS Surveyor's Record, though the corner is referenced as the terminal point for measurements of 1839, 1858, and 1877, indicating that on those occasions some monument was present from which to measure. No recent BCS tie cards were found referencing this corner.

Excavation was performed at this corner on June 24, 2016. Prior to excavation no metal or other artificial monuments were found prior to excavation. Substantial local evidence of the corner was found in the form of the east-west county road and a concrete post on the north side of the road, in-line with a field division and edge of farm lane to the north. It is noted that this position fit well with respect to relative positions of evidence found which indicates the respective locations of the corners one-half and one-quarter mile in both the east and west directions. Excavation at the probable position, based on the found evidence, revealed a stone found at 14 inches deep in the gravel road. With the top 9 inches of the stone exposed, it measured 9 inches E-W by 10 inches N-S and was clearly larger, particularly in the vertical dimension. The stone was fully embedded in the clay layer below the road with the top of the stone at the bottom of the road bed. The north side of the stone was flat and vertical with the high point of the stone being at the north edge of the top. No specific marks were found on the stone. The stone was held as marking the corner. The top 9 inches of the stone were embedded in concrete and a Harrison monument was set directly over the top, high point, near the north edge of the stone. This corner was originally established as a wood post in 1829.




Kenneth E. Hedge, County Surveyor


James S. Swift, IN LS 20200054
March 23, 2017

Sugar Creek Township

Section 17 T20N, R2W	Section 16 T20N, R2W
Section 20 T20N, R2W	Section 21 T20N, R2W

PHOTOGRAPHIC DOCUMENTATION

Date of photography: June 24, 2016

The stone as it was originally exposed, view from above.



The stone more fully exposed, view from above and north.



The stone as viewed from west.



View from east, looking across the stone and west along County Road 900 North.



View from above the stone, looking north toward the concrete post on the north side of County Road 900 North.



For details and documentation, refer to related sheet "Section Corner Record."