

SECTION CORNER RECORD

BOONE COUNTY SURVEYOR'S OFFICE

NE 800-200

State Plane grid coordinates NAD83 (CORS96):

North: 1787955.91 East: 3134847.05 (U.S. survey feet)

Type of monument: Harrison, 4" disk 'Section Corner'

Depth: One inch below adjacent road surface

Indiana tie card references:

IN02_T20NR1E20_80 IN02_T20NR1E21_72

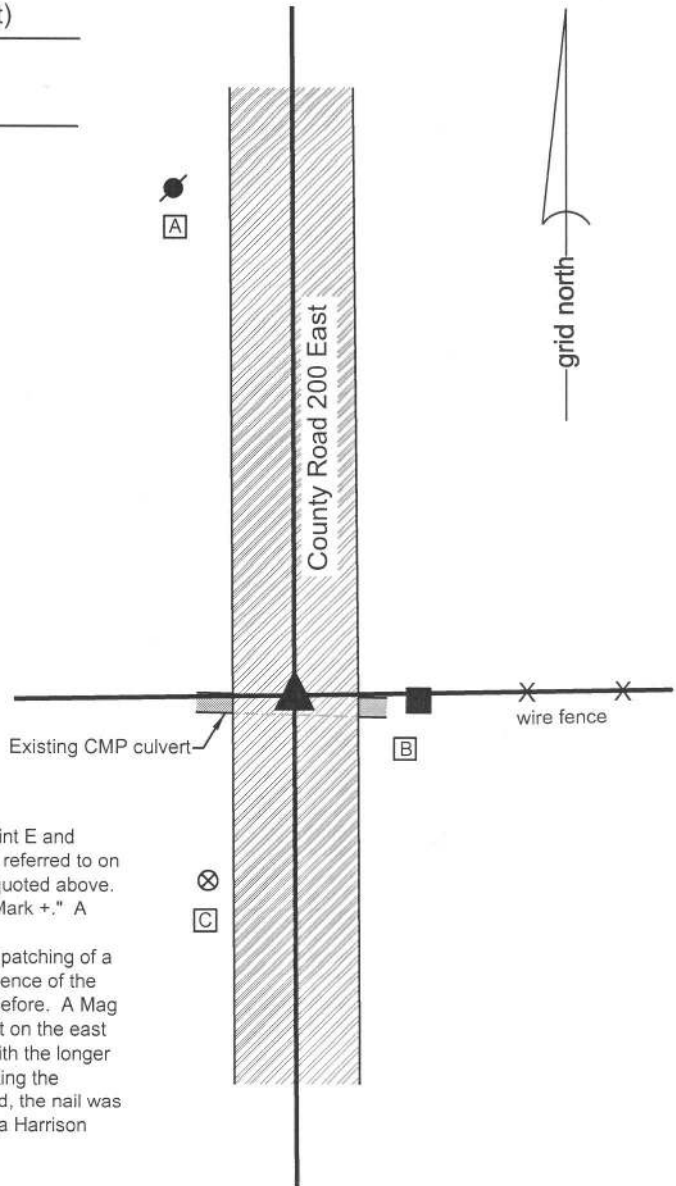
IN02_T20NR1E29_08 IN02_T20NR1E28_00

CORNER WITNESS DETAIL

SCALE 1" = 30'

- A - Mag nail set in S.E. side power pole, 3' a.g., 80.8'
- B - Mag nail set in W. side wood post, 2.5' a.g., 19.5'
- C - Boone County witness mark, flush, 32.0'

Boone County witness mark is a 3/8" diameter x 2' long rebar bearing a metal cap stamped "Boone County Witness Point."



The Harrison monument was set in place of a Mag nail found.

A BCS record of May 8, 1865 states, with respect to this corner, "Found point E and drove stake." A BCS record dated March 21-22, 1867 states "Found stake referred to on page 401." The reference to page 401 is a reference to the 1865 record quoted above. A BCS record dated June 2, 1883 states "Reestablished Stone 18x14x14 Mark +." A BCS tie card dated July 9, 1975 states "No Stone Found - Set Rod."

No significant excavation was performed at this corner, as it falls within the patching of a recently installed corrugated steel culvert pipe. It is believed that any evidence of the corner would have been obliterated by the installation of the culvert, if not before. A Mag nail found in the center of the road fit reasonably well with the tie to the post on the east side of the road. The nail is slightly north of the post but generally in line with the longer fence bearing east from the post. The Mag nail was accepted as representing the position of the rod set in 1975. With no contrary evidence likely to be found, the nail was accepted as marking the corner. The nail was removed and replaced with a Harrison monument set in the same position.

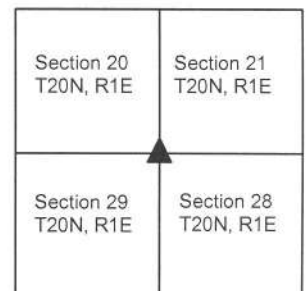
This corner was originally established as a wood post in 1822.



Kenneth E. Hedge
Kenneth E. Hedge, County Surveyor

James S. Swift
James S. Swift, IN LS 20200054
March 27, 2015

Clinton Township



SECTION CORNER RECORD

NE 800-250

BOONE COUNTY SURVEYOR'S OFFICE

State Plane grid coordinates NAD83 (2011):

North: 1788002.89 East: 3137483.11 (U.S. survey feet)

Type of monument: Harrison, 4" disk 'Section Corner'

Depth: Three inches above adjacent ground

Indiana tie card references:

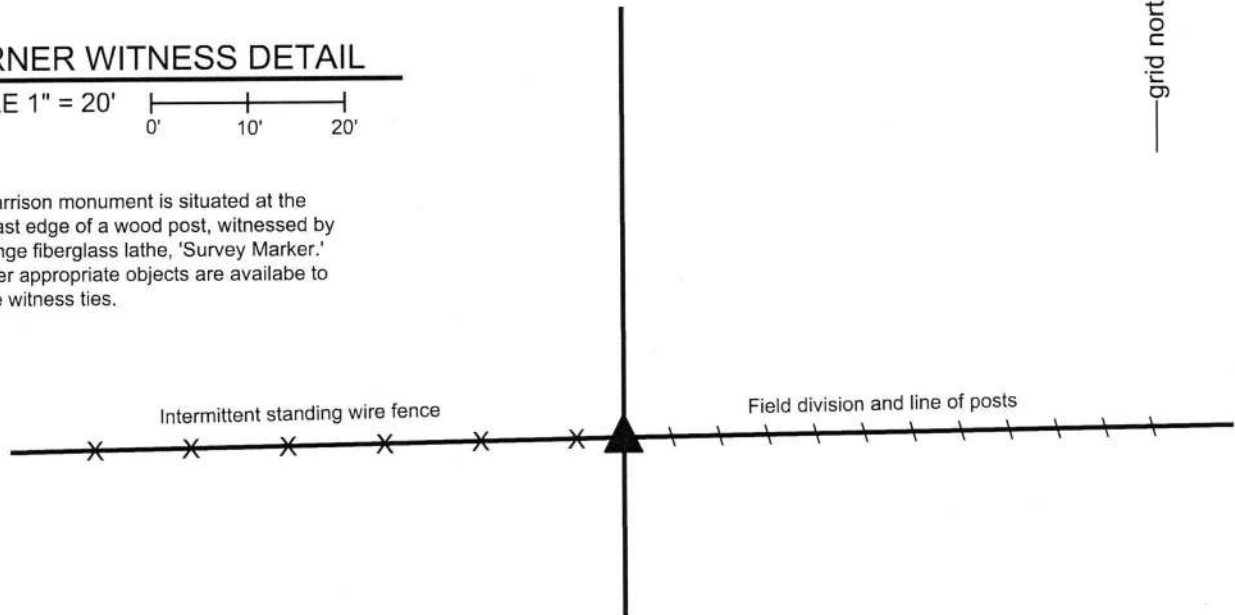
IN02_T20NR1E21_76 IN02_T20NR1E28_04



CORNER WITNESS DETAIL

SCALE 1" = 20'

The Harrison monument is situated at the northeast edge of a wood post, witnessed by an orange fiberglass lathe, 'Survey Marker.' No other appropriate objects are available to provide witness ties.

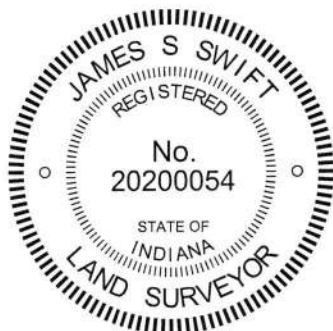


The Harrison monument was set in place of a stone found.

An undated record in the Boone County Surveyor's Record shows the corner as "reest. stone." The record is attributed to Albert K. Warren who served as Boone County Surveyor from 1886 to 1888. No recent BCS tie cards were found referencing this corner.

Excavation was performed at this corner of March 22, 2018. Prior to excavation, a wood post was found providing evidence of the corner. Inspection of the post clearly indicated that it had at one time served as a corner post. The post has a wood brace attached to the east side and the notch for a brace, now removed, to the south. Fencing is still attached to the west side of the post and has been cut off to the south and east sides. The post is in line with evidence of occupation to the east and west, with intermittent standing fence to the west and a line of posts in a field division to the east.

Excavation around the post revealed several stones found. A stone at the northeast edge of the post appeared to be a purposely set corner stone. The top of the stone was found slightly below flush with the ground level. The stone was vertical with a distinct high point and a wide, sturdy base. No specific etched markings were found on the stone, nor are any mentioned in the undated record. The stone was removed and found to be 9 inches N-S by 9 inches E-W by 9 inches tall. The high point of the stone was accepted as marking the corner and a Harrison monument was set at this position. This corner was originally established as a wood post in 1822.



Kenneth E. Hedge, County Surveyor

James S. Swift, IN LS 20200054

March 28, 2018

Clinton
Township

Section 21
T20N, R1E

Section 28
T20N, R1E

SECTION CORNER RECORD

NE 800-300

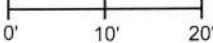
BOONE COUNTY SURVEYOR'S OFFICE

State Plane grid coordinates NAD83 (2011):
North: 1788042.22 East: 3140128.97 (U.S. survey feet)

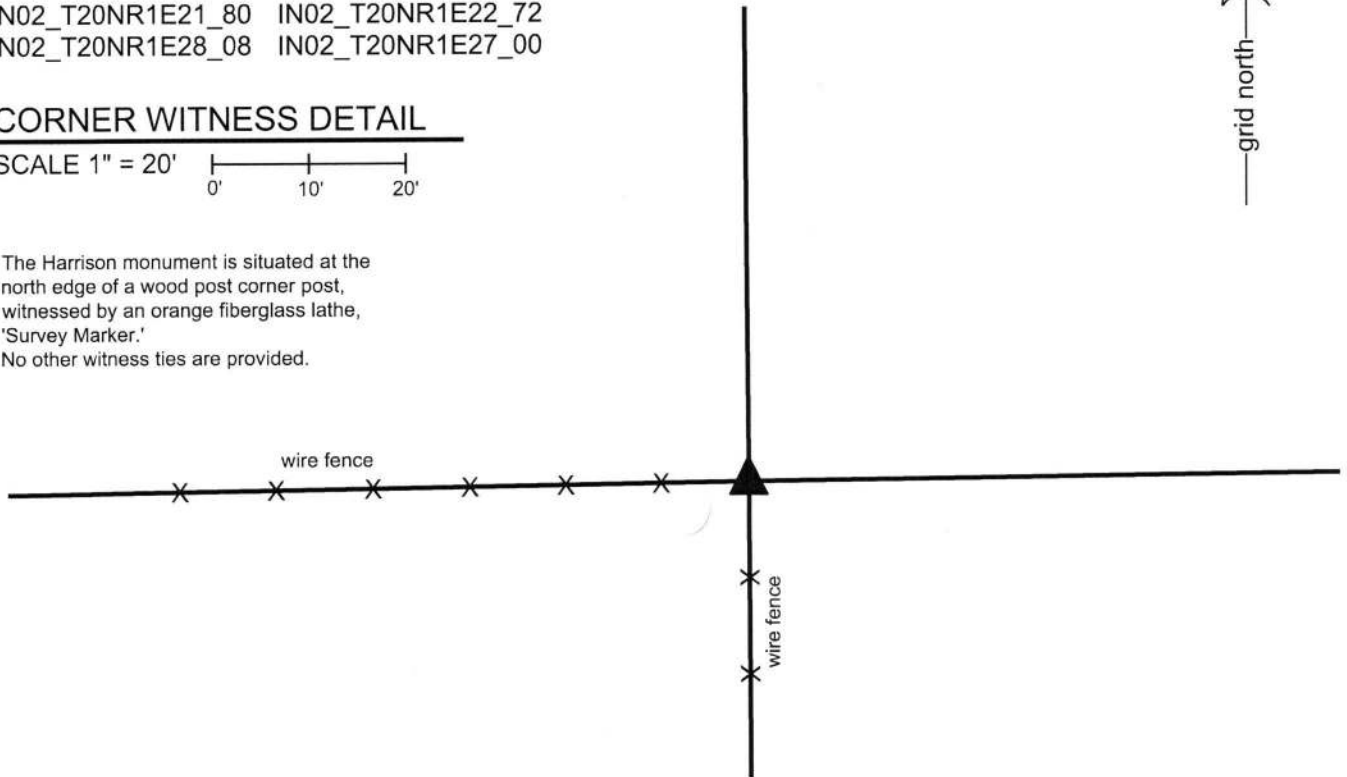
Type of monument: Harrison, 4" disk 'Section Corner'
Depth: Four inches above adjacent ground.

Indiana tie card references:
IN02_T20NR1E21_80 IN02_T20NR1E22_72
IN02_T20NR1E28_08 IN02_T20NR1E27_00

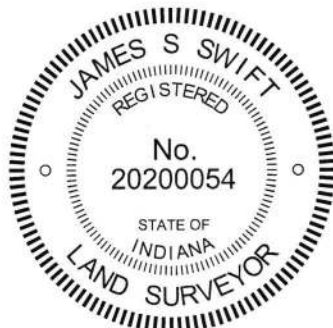
CORNER WITNESS DETAIL

SCALE 1" = 20' 

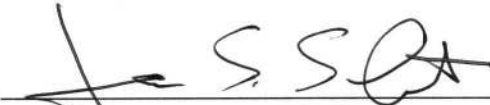
The Harrison monument is situated at the north edge of a wood post corner post, witnessed by an orange fiberglass lathe, 'Survey Marker.'
No other witness ties are provided.



The Harrison monument was set in place of remnants of an ancient wood post found at the north edge of a standing wood post and in-line with fences to the west and south.
No specific descriptions of this corner were found in the old BCS Surveyor's record beyond the original establishment of the corner as a wood post in 1822. No recent BCS tie cards were found referencing the corner.
Excavation was performed at this corner on March 13, 2018. Prior to excavation, the readily visible evidence of the corner was found in the form of a wood post at the intersection of fences to the west and south. Excavation around the post revealed numerous stones found around the post. None of the stones bore the characteristics associated with stones purposely set to mark a corner, based on evidence observed at many other corners throughout the county. Careful inspection of the situation yielded the observation that the standing post is in-line with the fence to the south but slightly south of the longer fence line to the west. The post is clearly offset from the old, established fence line to the west. Excavation at the north edge of the post revealed numerous fragments of wood which appeared to be the remnants of an ancient wood post along with buried scraps of fencing which appeared to represent old fencing to the north and west. The pieces of wood providing evidence of an old corner post were accepted as the best available evidence of the original position of the corner. A Harrison monument was set in place of this evidence, at the north edge of the standing wood post, in line with the fences to the west and south.




Kenneth E. Hedge, County Surveyor


James S. Swift, IN LS 20200054
March 28, 2018

Clinton Township

Section 21 T20N, R1E	Section 22 T20N, R1E
Section 28 T20N, R1E	Section 27 T20N, R1E

SECTION CORNER RECORD

BOONE COUNTY SURVEYOR'S OFFICE

NE 850-200

State Plane grid coordinates NAD83 (CORS96):

North: 1790584.89 East: 3134837.63 (U.S. survey feet)

Type of monument: Harrison, 4" disk 'Section Corner'

Depth: One inch below adjacent road surface

Indiana tie card references:

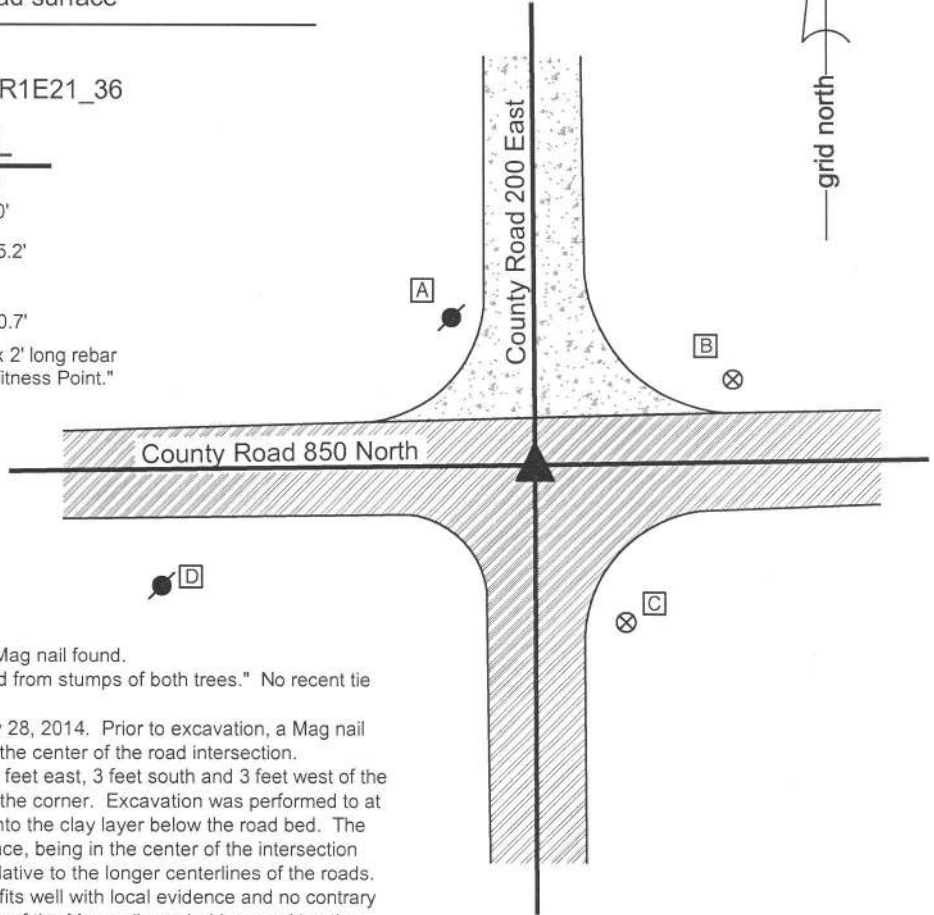
IN02_T20NR1E20_44 IN02_T20NR1E21_36

CORNER WITNESS DETAIL

SCALE 1" = 40'

- A - Mag nail set in E. side power pole, 2' a.g., 35.2'
- B - Boone County witness mark, flush, 45.2'
- C - Boone County witness mark, flush, 37.8'
- D - Mag nail set in E. side power pole, 2' a.g., 80.7'

Boone County witness mark is a 3/8" diameter x 2' long rebar bearing a metal cap stamped "Boone County Witness Point."



The Harrison monument was set in place of a Mag nail found.

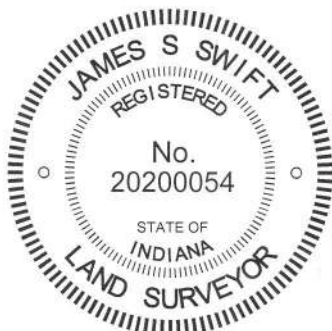
A BCS record dated May 8, 1865 states "Found from stumps of both trees." No recent tie cards were found referencing this corner.

Excavation was performed at this corner on May 28, 2014. Prior to excavation, a Mag nail was found flush with the surface of the road at the center of the road intersection.

Excavation of an area extending 2 feet north, 2 feet east, 3 feet south and 3 feet west of the Mag nail did not reveal any further evidence of the corner. Excavation was performed to at least 28 inches deep, approximately 5 inches into the clay layer below the road bed. The position of the Mag nail fit well with local evidence, being in the center of the intersection and appeared to be in a reasonable position relative to the longer centerlines of the roads.

The source of the Mag nail is not known, but it fits well with local evidence and no contrary evidence of the corner was found. The position of the Mag nail was held as marking the corner. The nail was replaced with a Harrison monument in the same position.

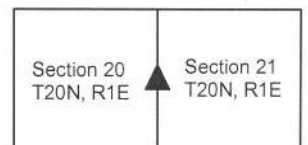
This corner was originally established as a wood post in 1822.



Kenneth E. Hedge
Kenneth E. Hedge, County Surveyor

James S. Swift
James S. Swift, IN LS 20200054
March 27, 2015

Clinton Township



SECTION CORNER RECORD

NE 850-300

BOONE COUNTY SURVEYOR'S OFFICE

State Plane grid coordinates NAD83 (CORS96):

North: 1790674.03 East: 3140108.38 (U.S. survey feet)

Type of monument: Harrison, 4" disk 'Section Corner'

Depth: One inch below adjacent road surface

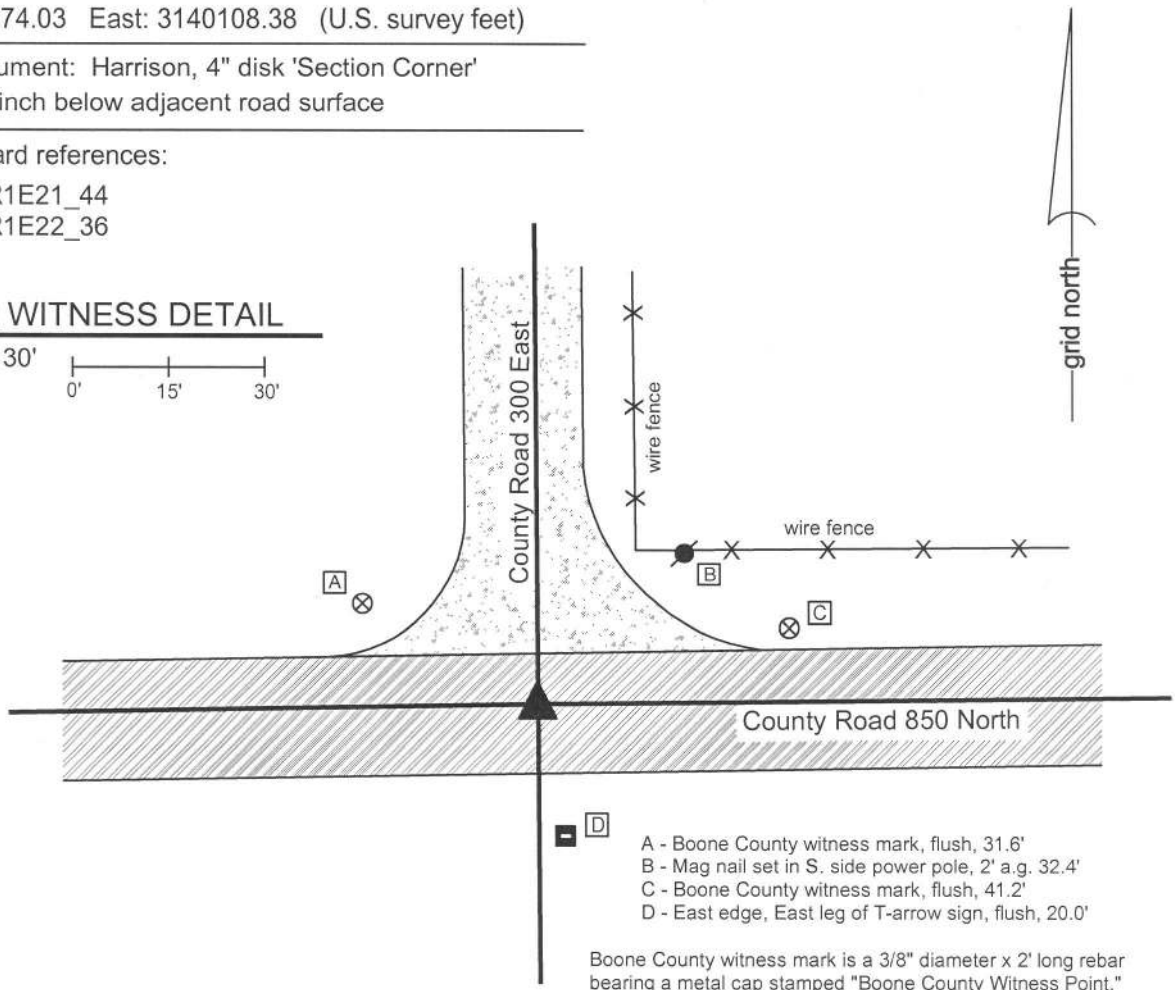
Indiana tie card references:

IN02_T20NR1E21_44

IN02_T20NR1E22_36

CORNER WITNESS DETAIL

SCALE 1" = 30'



- A - Boone County witness mark, flush, 31.6'
- B - Mag nail set in S. side power pole, 2' a.g. 32.4'
- C - Boone County witness mark, flush, 41.2'
- D - East edge, East leg of T-arrow sign, flush, 20.0'

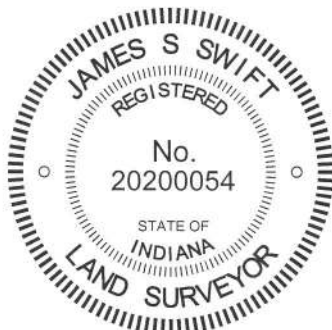
Boone County witness mark is a 3/8" diameter x 2' long rebar bearing a metal cap stamped "Boone County Witness Point."

The Harrison monument was set over the high point of a stone found.

A BCS record of August 20, 1874 states, with respect to this corner, "Reestablished from roots of Beech and finding the old stake that had been driven. Set Rock 16.14 by 7 in. +." No recent BCS tie cards were found referencing this corner.

Excavation was performed at this corner on May 23, 2014. Prior to excavation a 5/8 inch diameter rebar was found at the surface of the asphalt roadway. Excavation revealed a stone found at 20 inches deep. With the top 8 inches of the stone exposed, it measured 13 inches E-W by 7 inches N-S and appeared to be vertical. A clearly etched "+" mark was found on the south sloping side of the stone, near the east end. The high point of the stone is at the far east end and the etched + is on the south side, directly below the high point. The stone was accepted as being the rock described in the 1874 record and was held as marking the corner. The stone was left in place and a Harrison monument was set directly over the high point of the stone. The rebar, removed during excavation, had been 0.4 foot west and 0.5 feet north of the high point on the stone.

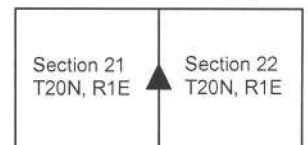
This corner was originally established as a wood post in June, 1822.



Kenneth E. Hedge
Kenneth E. Hedge, County Surveyor

James S. Swift
James S. Swift, IN LS 20200054
March 27, 2015

Clinton Township



PHOTOGRAPHIC DOCUMENTATION

Date of photography: May 23, 2014

The stone as originally found.



The stone from above and north, showing the etched cross just below the high point.



The stone from above, showing the sloping north side and the vertical east and south sides.



View from the west, looking across the stone and east along County Road 850 North.



The top of the rock exposed, showing the + mark.



For details and documentation, refer to related sheet "Section Corner Record."

SECTION CORNER RECORD

BOONE COUNTY SURVEYOR'S OFFICE

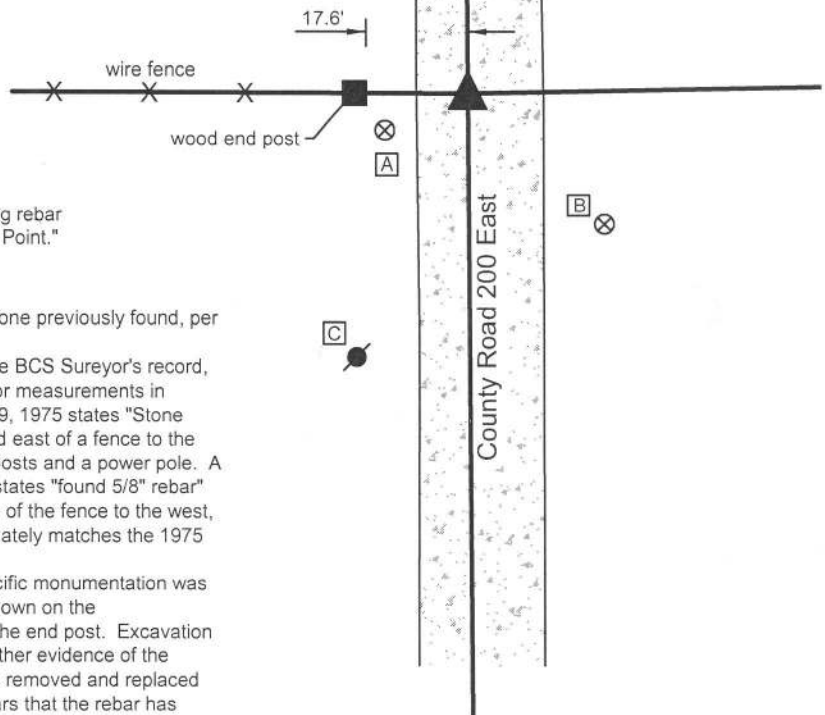
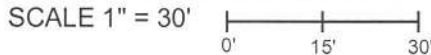
NE 900-200

State Plane grid coordinates NAD83 (CORS96):
 North: 1793212.31 East: 3134820.13 (U.S. survey feet)

Type of monument: Harrison, 4" disk 'Section Corner'
 Depth: six inches below adjacent gravel road surface

Indiana tie card references:
 IN02_T20NR1E17_80 IN02_T20NR1E16_72
 IN02_T20NR1E20_08 IN02_T20NR1E21_00

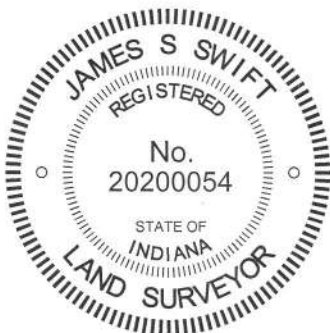
CORNER WITNESS DETAIL



- A - Boone County witness mark, flush, 14.3'
- B - Boone County witness mark, flush, 29.8'
- C - Mag nail set in E. side power pole, 2' a.g., 44.5'

Boone County witness mark is a 3/8" diameter x 2' long rebar bearing a metal cap stamped "Boone County Witness Point."

The Harrison monument was set in the position of a stone previously found, per BCS records.
 No specific descriptions of this corner were found in the BCS Sureyor's record, though the corner is mentioned as the terminal point for measurements in records of 1837 and 1894. A BCS tie card dated July 9, 1975 states "Stone Found - Set Rod" and shows the corner in line with and east of a fence to the west. The tie card shows distance ties to two corner posts and a power pole. A sketch from an unknown source dated April 27, 1977 states "found 5/8" rebar" and also shows the corner at the easterly prolongation of the fence to the west, with a tie to the end post of said fence which approximately matches the 1975 BCS tie card.
 This corner was excavated on May 23, 2014. No specific monumentation was found prior to excavation, but the fence to the west, shown on the aforementioned documents, was yet present, as was the end post. Excavation of the roadway to the east of said post revealed no further evidence of the corner. It is believed that the stone found in 1975 was removed and replaced with a rebar, or 'rod' as called on the tie card. It appears that the rebar has been subsequently removed, most likely in association with road grading activities. The position of the corner was reestablished in line with the fence to the west at 17.6 feet east of the end post on the west side of the road, per the 1975 tie card. A Harrison monument was set at this position.
 This corner was originally established as a wood post in 1822.



Kenneth E. Hedge
 Kenneth E. Hedge, County Surveyor

James S. Swift
 James S. Swift, IN LS 20200054
 March 27, 2015

Clinton Township

Section 17 T20N, R1E	Section 16 T20N, R1E
Section 20 T20N, R1E	Section 21 T20N, R1E

SECTION CORNER RECORD

BOONE COUNTY SURVEYOR'S OFFICE

NE 900-300

State Plane grid coordinates NAD83 (CORS96):
 North: 1793312.18 East: 3140091.56 (U.S. survey feet)

Type of monument: Harrison, 4" disk 'Section Corner'
 Depth: six inches below adjacent gravel road surface

Indiana tie card references:

IN02_T20NR1E16_80 IN02_T20NR1E15_72
 IN02_T20NR1E21_08 IN02_T20NR1E22_00

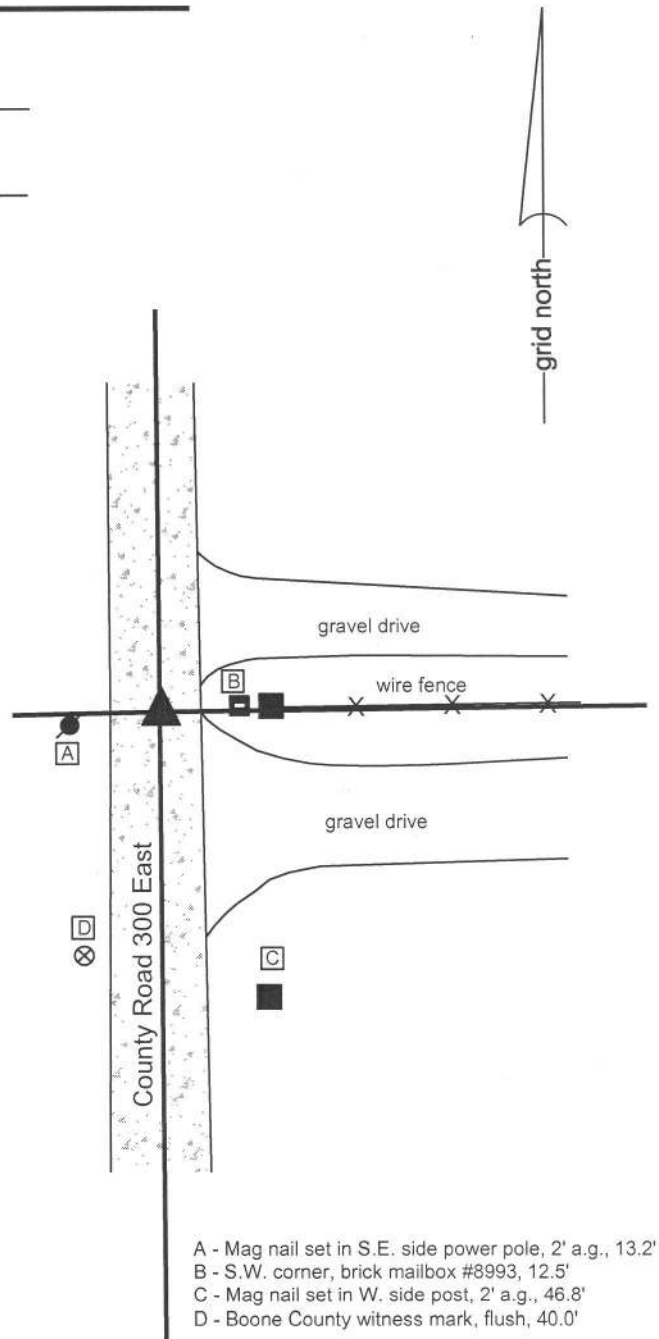
CORNER WITNESS DETAIL

SCALE 1" = 30'

The Harrison monument was set in place of a 5/8 inch diameter rebar found. No specific descriptions of this corner were found in the old BCS Surveyor's Record, though the corner is mentioned as the terminal point for measurements in records of 1891 and 1901. A BCS tie card dated June 5, 1975 states "Stone found 8" deep - set rod."

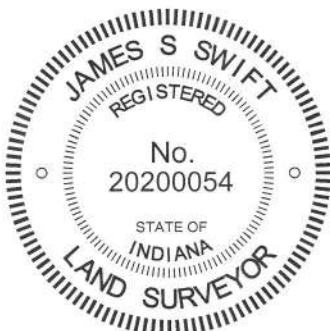
This corner was excavated on May 22, 2015. Prior to excavation, a 5/8 inch diameter rebar was found at the surface of the gravel road. The top of the rebar was bent, but the primary shaft was straight and vertical yielding minimal uncertainty as to the original position of the monument. A stone was found at 2 inches deep, slightly south and west of the rebar. The stone was vertical and oriented in cardinal directions, being 11 inches tall, 4 inches North-South and 5 inches East-West. However, the stone was found to be entirely within the fill material of the road, with the bottom of the stone at the bottom of the road bed. In almost all cases, corner stones are found embedded in the clay layer below the road. The following features of the stone as a monument are uncertain: As noted, it was in the fill material rather than being embedded in the clay. It was at 2 inches deep whereas the 1975 record states that a stone was found at 8 inches. It did not appear to be the case, nor is it most logical to assume it to be the case, that the road had been scraped to 6 inches lower than its level in 1975. No marks were found on the stone, though given the lack of specific description in the BCS Surveyor's Record, this is not a particularly remarkable fact. It is not clear what happened in 1975. The reference points for the distance ties shown on the 1975 tie card are no longer present. In the process of excavating and examining many other corners, it has been observed that the statement 'stone found - set rod [or rail]' on BCS tie cards from the late 1960s through the mid 1970s typically indicates that the stone was found, removed and replaced with a rebar or railroad rail. It is not known whether this was the case at this particular corner. It is possible that this stone was found in 1975, removed and reset higher, adjacent to the original position. It is also possible that the stone was left in place as found and the rebar was set next to the stone, though this possibility leaves unexplained the variation of depth of the stone as found and as reported.

Given the uncertainties with the record and with the depth of the stone being in the fill material of the road and noting that the rebar was situated next to the stone near the northeast corner thereof, the rebar was held as marking the corner. The stone and rebar were both removed and a Harrison monument was set in the position of the vertical shaft of the rebar. This corner was originally established in 1822.



- A - Mag nail set in S.E. side power pole, 2' a.g., 13.2'
- B - S.W. corner, brick mailbox #8993, 12.5'
- C - Mag nail set in W. side post, 2' a.g., 46.8'
- D - Boone County witness mark, flush, 40.0'

Boone County witness mark is a 3/8" diameter x 2' long rebar bearing a metal cap stamped "Boone County Witness Point."



Kenneth E. Hedge
 Kenneth E. Hedge, County Surveyor

James S. Swift
 James S. Swift, IN LS 20200054
 March 27, 2015

Clinton Township

Section 16 T20N, R1E	Section 15 T20N, R1E
Section 21 T20N, R1E	Section 22 T20N, R1E