

# SECTION CORNER RECORD

NE 200-800

## BOONE COUNTY SURVEYOR'S OFFICE

State Plane grid coordinates NAD83 (NSRS 2007):

North: 1756953.64 East: 3167009.95 (U.S. survey feet)

Type of monument: Harrison, 4" disk 'Section Corner'

Depth: four inches below the adjacent gravel road surface.

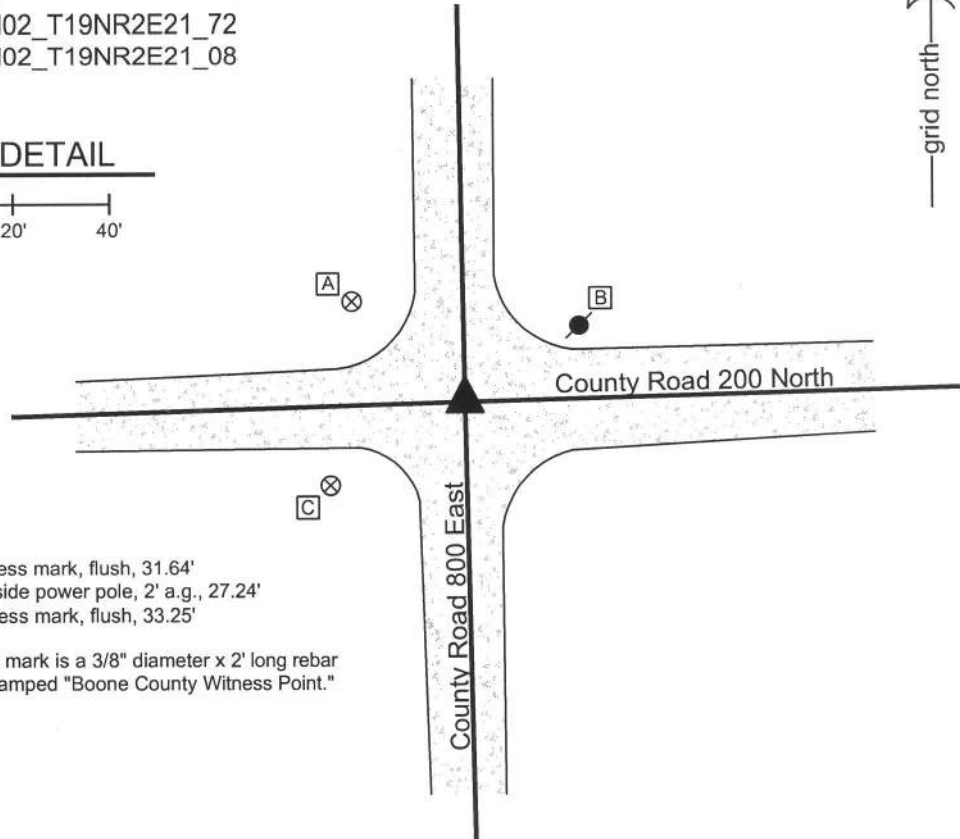
Indiana tie card references:

IN02\_T19NR2E20\_80 IN02\_T19NR2E21\_72

IN02\_T19NR2E28\_00 IN02\_T19NR2E21\_08

### CORNER WITNESS DETAIL

SCALE 1" = 40'



- A - Boone County witness mark, flush, 31.64'
- B - Mag nail set in W. side power pole, 2' a.g., 27.24'
- C - Boone County witness mark, flush, 33.25'

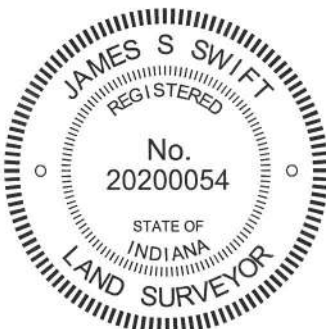
Boone County witness mark is a 3/8" diameter x 2' long rebar bearing a metal cap stamped "Boone County Witness Point."

The harrison monument was set over a stone found.

A BCS tie card dated July 8, 1974 states "found rail + sm. stone." The field notes associated with this tie card, dated June 28, 1974, states "found stone with rail." No specific descriptions of this corner were found in the old BCS Surveyor's Record. No information was found pertaining to the setting of the rail found in 1974.

This corner was excavated on June 14, 2010. Prior to excavation a section of railroad rail was found at the surface, apparently leaning substantially towards the west. Excavation revealed that the rail is leaning over the stone. The top of the rail is over the top of the stone and the stone is 14 inches deep. The rail was removed. The stone is embedded in the clay layer below the road, protruding approximately 3 inches into the bottom of the road bed. The top 16 inches of the stone were exposed and the stone remained stable upon an attempt to move it, hence it clearly extends further into the clay. At 13 inches from the top, the stone measures 14 inches N-S by 11 inches E-W. With the stone exposed, it was observed that the position of the top of the rail had been towards the west side of the stone, slightly south of the center, but had clearly been set such that the top of the rail was a reasonable indicator of the position of the stone. The position of the top of the rail, as originally found, was held as the specific location of the corner. A harrison monument was broken off at 8 inches tall and set over the stone, with the top 4 inches of the stone encased in concrete along with the harrison.

This corner was originally established as a wood post in July, 1821.



*Kenneth E. Hedge*  
 \_\_\_\_\_  
 Kenneth E. Hedge, County Surveyor

*James S. Swift*  
 \_\_\_\_\_  
 James S. Swift, IN LS 20200054  
 July 25, 2011, Revised March 18, 2013

Marion Twp

Union Twp

Section 20 T19N, R2E	Section 21 T19N, R2E
Section 29 T19N, R2E	Section 28 T19N, R2E

PHOTOGRAPHIC DOCUMENTATION

Date of photography: June 15, 2010

View from the south showing the rail leaning over the stone.



View from above showing the rail leaning over the stone.



View from above and south showing the stone after the rail had been removed.



View from the east, looking across the stone and west along County Road 200 North.



View from above and north showing the stone after the rail had been removed.



For details and documentation, refer to related sheet "Section Corner Record."



# SECTION CORNER RECORD

## BOONE COUNTY SURVEYOR'S OFFICE

NE 200-850

State Plane grid coordinates NAD83 (NSRS 2007):  
 North: 1757030.07 East: 3169680.37 (U.S. survey feet)

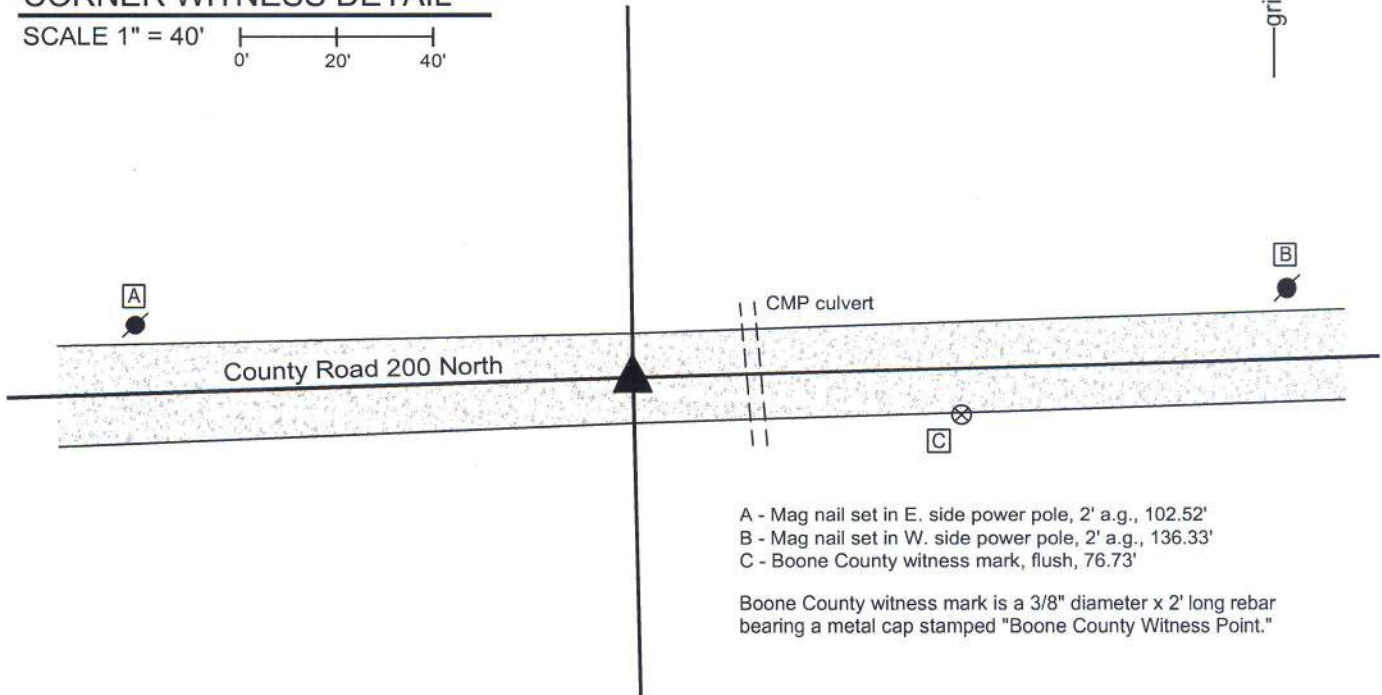
Type of monument: Harrison, 4" disk 'Section Corner'  
 Depth: six inches below adjacent gravel road surface

Indiana tie card references:  
 IN02\_T19NR2E21\_76  
 IN02\_T19NR2E28\_04



### CORNER WITNESS DETAIL

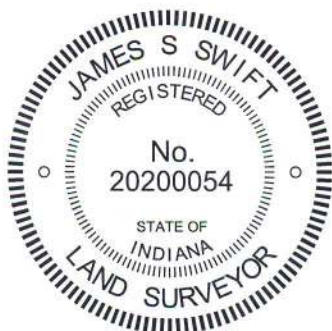
SCALE 1" = 40'  
 0' 20' 40'



- A - Mag nail set in E. side power pole, 2' a.g., 102.52'
- B - Mag nail set in W. side power pole, 2' a.g., 136.33'
- C - Boone County witness mark, flush, 76.73'

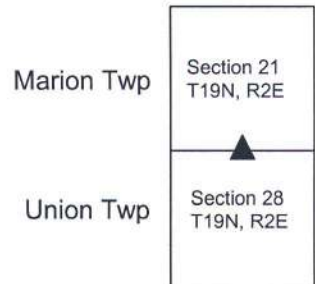
Boone County witness mark is a 3/8" diameter x 2' long rebar bearing a metal cap stamped "Boone County Witness Point."

The harrison monument was set in place of a stone found. No specific descriptions of this corner were found in the BCS Surveyor's Record. A BCS tie card dated July 8, 1974 states "wood stake found." This corner was excavated on March 30, 2011. Prior to excavation no monument was found, nor was a position for the corner able to be determined from information found in private surveys. A theoretical position for the corner was established at the midpoint of the line connecting the section corners to the east and west. Excavation at this point yielded a stone found at 12 inches deep, approximately 1 foot east of the theoretical midpoint corner position. The stone was found in a vertical orientation, being 12 inches tall by 6 inches N-S by 4 inches E-W. The bottom half of the stone was embedded in the clay layer below the road. No specific markings were found on the stone. The center of the top of the stone was held as the specific position of the corner. The stone was removed and replaced with a harrison monument. This corner was originally established as a wood post in July, 1821.



*Kenneth E. Hedge*  
 Kenneth E. Hedge, County Surveyor

*James S. Swift*  
 James S. Swift, IN LS 20200054  
 March 1, 2012, revised January 23, 2013



PHOTOGRAPHIC DOCUMENTATION

Date of photography: March 30, 2011

View of the stone as exposed and embedded.



View of the stone from above.



The stone removed from the road.



The stone removed from the road.



For details and documentation, refer to related sheet "Section Corner Record."



# SECTION CORNER RECORD

NE 200-900

## BOONE COUNTY SURVEYOR'S OFFICE

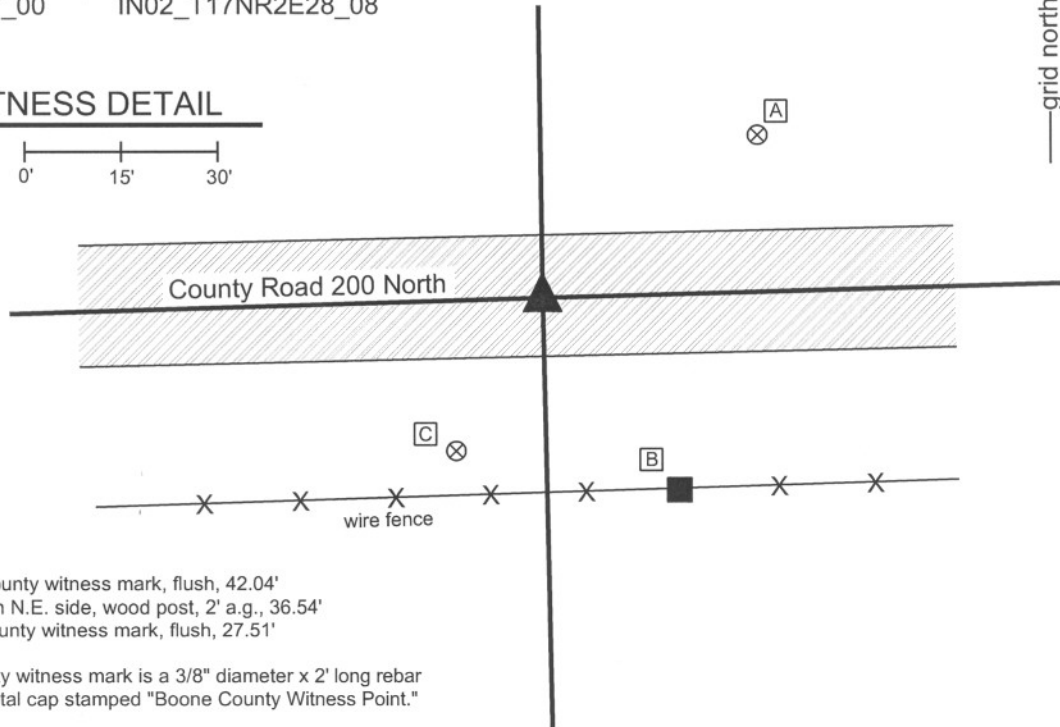
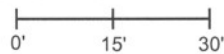
State Plane grid coordinates NAD83 (NSRS 2007):  
North: 1757107.36 East: 3172348.82 (U.S. survey feet)

Type of monument: Harrison, 4" disk 'Section Corner'  
Depth: One inch below adjacent road surface

Indiana tie card references:  
IN02\_T19NR2E21\_80 IN02\_T22NR2E22\_72  
IN02\_T17NR2E27\_00 IN02\_T17NR2E28\_08

### CORNER WITNESS DETAIL

SCALE 1" = 30'



- A - Boone County witness mark, flush, 42.04'
- B - Mag set in N.E. side, wood post, 2' a.g., 36.54'
- C - Boone county witness mark, flush, 27.51'

Boone County witness mark is a 3/8" diameter x 2' long rebar bearing a metal cap stamped "Boone County Witness Point."

The harrison monument was set over a stone found.  
A BCS of August 10-13, 1854 states "Reestablished. Set Rock 12 by 16 in. There are no bearing trees." A BCS tie card dated July 11, 1978 states "No stone found." A survey by the Schneider Corporation, dated December 22, 2005, certified by Carolina L. Candler, states "Stone found 0.6' below surface with 5/8" rebar beside (mag nail found 1.1' S, 1.2' E of stone 0.2' below surface) No B.C.S Ref. ties."  
This corner was excavated on September 7, 2010. Prior to excavation an aluminum disk stamped with the name Schneider Corp. was found at the surface in the northwest corner of a 2 foot by 2 foot area of patched asphalt. Excavation revealed that the aluminum disk was placed upon a metal pin approximately 7 inches long. A stone was found at 7 inches deep, directly below the metal pin. The stone has a distinguishable marks on the top, which may be marks from a road grader or may be purposely etched. With 9 inches exposed the stone measures 8 inches E-W by 12 inches N-S, fully embedded in the clay layer below the road, with approximately 5 inches of the stone protruding into the bottom of the road bed. The stone was left undisturbed below 8 inches from the top and the full height of the stone was not measured. Hence, the stone was not solidly confirmed as being the record stone from 1854. It is noted that the N-S dimension does match the 1854 record and that BCS records prior to 1860 tend to note only two dimensions on a stone, typically the height and the largest horizontal dimension. The stone was held as marking the corner. A harrison monument was broken off at 6 inches tall and set directly over the stone, in the position of the disk found prior to excavation. The top of the stone was encased in concrete along with the harrison monument.  
This corner was originally established as a wood post in July, 1821.



*Kenneth E. Hedge*  
Kenneth E. Hedge, County Surveyor

*James S. Swift*  
James S. Swift, IN LS 20200054  
July 25, 2011

Marion Twp

Section 21 T19N, R2E	Section 22 T19N, R2E
Section 28 T19N, R2E	Section 27 T19N, R2E

Union Twp

PHOTOGRAPHIC DOCUMENTATION  
Date of photography: September 7, 2010

View of the stone as first exposed.



View of the stone partially exposed.



View from the east, looking across the stone and west along County Road 100 North, across U.S. 421



View of the stone partially exposed.



View of the stone from above, immediately prior to the top being encased in concrete.



For details and documentation, refer to related sheet "Section Corner Record."



# SECTION CORNER RECORD

## BOONE COUNTY SURVEYOR'S OFFICE

NE 250-800

State Plane grid coordinates NAD83 (CORS96):

North: 1759598.07 East: 3166965.20 (U.S. survey feet)

Type of monument: Harrison, 4" disk 'Section Corner'

Depth: six inches below adjacent gravel road surface

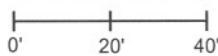
Indiana tie card references:

IN02\_T19NR2E20\_44

IN02\_T19NR2E21\_36

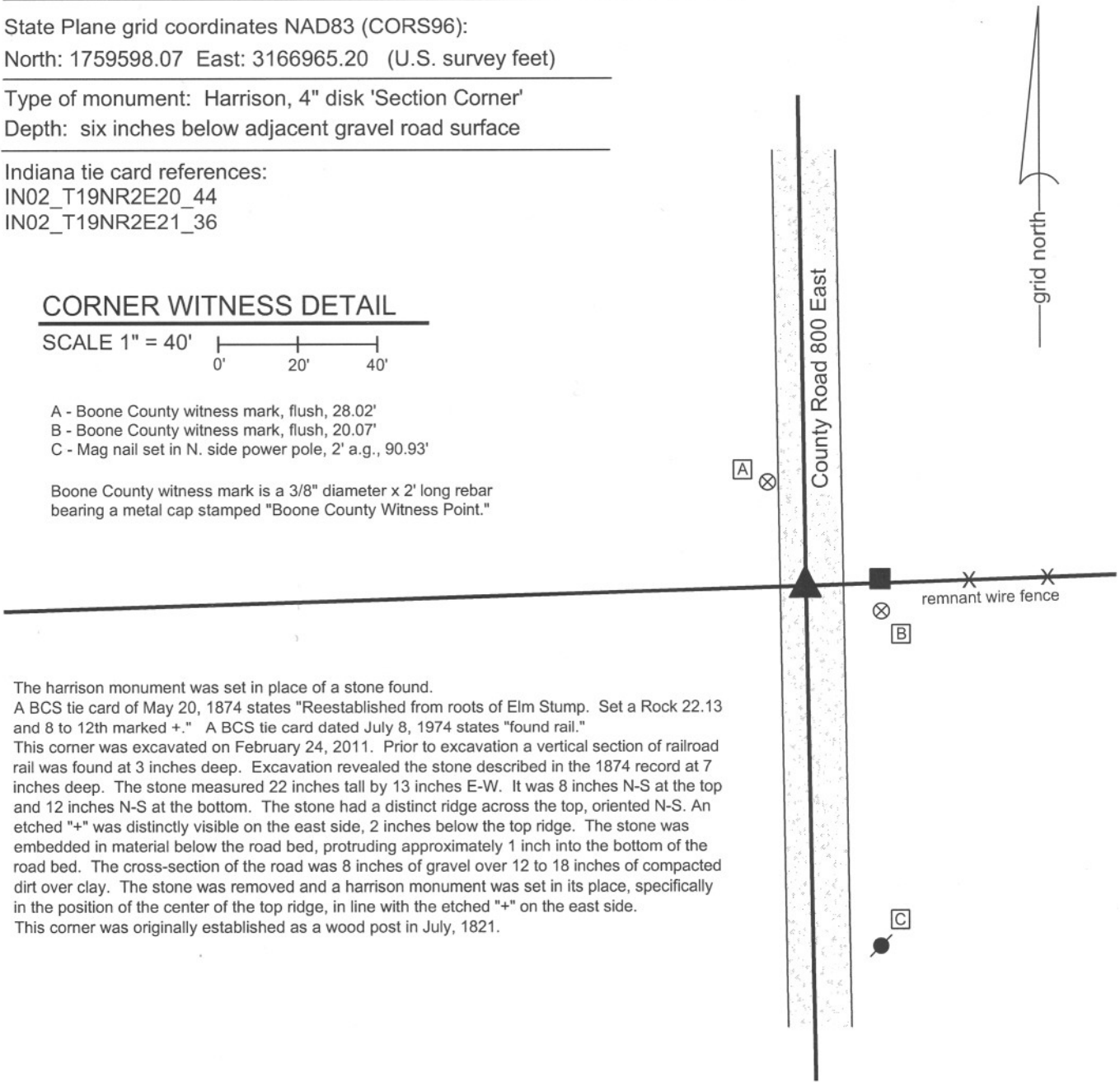
### CORNER WITNESS DETAIL

SCALE 1" = 40'

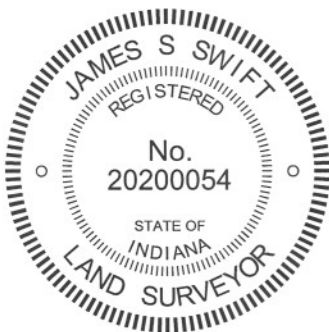


- A - Boone County witness mark, flush, 28.02'
- B - Boone County witness mark, flush, 20.07'
- C - Mag nail set in N. side power pole, 2' a.g., 90.93'

Boone County witness mark is a 3/8" diameter x 2' long rebar bearing a metal cap stamped "Boone County Witness Point."



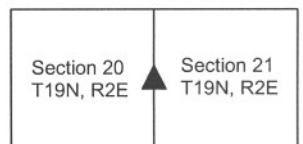
The harrison monument was set in place of a stone found. A BCS tie card of May 20, 1874 states "Reestablished from roots of Elm Stump. Set a Rock 22.13 and 8 to 12th marked +." A BCS tie card dated July 8, 1974 states "found rail." This corner was excavated on February 24, 2011. Prior to excavation a vertical section of railroad rail was found at 3 inches deep. Excavation revealed the stone described in the 1874 record at 7 inches deep. The stone measured 22 inches tall by 13 inches E-W. It was 8 inches N-S at the top and 12 inches N-S at the bottom. The stone had a distinct ridge across the top, oriented N-S. An etched "+" was distinctly visible on the east side, 2 inches below the top ridge. The stone was embedded in material below the road bed, protruding approximately 1 inch into the bottom of the road bed. The cross-section of the road was 8 inches of gravel over 12 to 18 inches of compacted dirt over clay. The stone was removed and a harrison monument was set in its place, specifically in the position of the center of the top ridge, in line with the etched "+" on the east side. This corner was originally established as a wood post in July, 1821.



*Kenneth E. Hedge*  
 Kenneth E. Hedge, County Surveyor

*James S. Swift*  
 James S. Swift, IN LS 20200054  
 March 1, 2012

Marion Township



PHOTOGRAPHIC DOCUMENTATION

Date of photography: February 24, 2011

View of the stone as first exposed.



The stone washed with water, showing the etched mark on the east side.



View of the stone from above.



The stone (supported by the rail) after removal from the road bed.



For details and documentation, refer to related sheet "Section Corner Record."



# SECTION CORNER RECORD

NE 250-900

## BOONE COUNTY SURVEYOR'S OFFICE

State Plane grid coordinates NAD83 (CORS96):  
North: 1759774.92 East: 3172316.32 (U.S. survey feet)

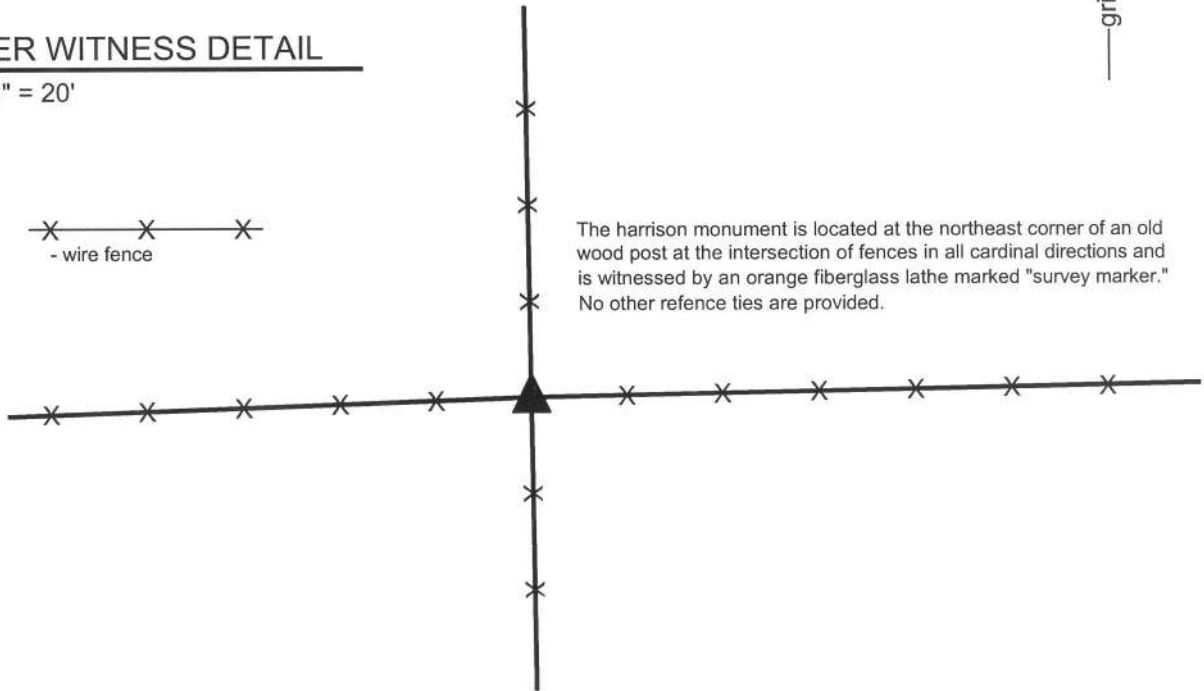
Type of monument: Harrison, 4" disk 'Section Corner'  
Depth: Four inches above adjacent ground

Indiana tie card references:  
IN02\_T19NR2E21\_44  
IN02\_T19NR2E22\_36

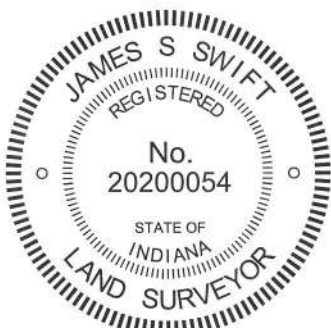


### CORNER WITNESS DETAIL

SCALE 1" = 20'



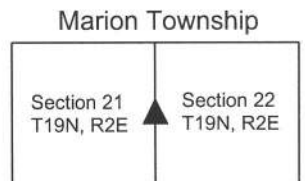
The harrison monument was set in place of a stone found.  
A BCS record of 10-13, 1857 states "Reestablished, set a Rock, 16x22 in." No recent BCS tie cards were found referencing this corner.  
Excavation at this corner took place on October 14, 2011. Prior to excavation a wood corner post was found at the intersection of old fences to the north, south, east and west. An iron pipe was found along the north side of the post. Excavation revealed a stone found at 4 inches deep adjacent to the northeast corner of the wood post. The stone measured 22 inches E-W by 14 inches tall, thin in the N-S dimension, oriented East-West with a distinct high point at the top of the E-W ridge along the top of the stone. The stone did not appear to be acting as a brace rock for the post. The stone matched the record dimension of 22 inches, was close to the record dimension of 16 inches and had similar characteristics to stones found marking other corners throughout the county. The stone was accepted as being the rock described in the 1857 record and was held as marking the corner. The stone and iron pipe were both removed and a harrison monument was set in a column of concrete within a vertical section of 12 inch diameter plastic storm pipe. The harrison was set in the same position as the high point of the distinct E-W ridge on the top of the stone. No source documentation was found for the iron pipe.  
This corner was originally set as a wood post in July, 1821.



*Kenneth E. Hedge*  
Kenneth E. Hedge, County Surveyor

*James S. Swift*  
James S. Swift, IN LS 20200054

April 11, 2013



PHOTOGRAPHIC DOCUMENTATION

Date of photography: October 12-14, 2011

The post prior to excavation.



The stone exposed at the base of the post.



The post and iron pipe. The small rebar is in the position at which the harrison was subsequently set. The stone is on the ground to the left.



For details and documentation, refer to related sheet "Section Corner Record."



# SECTION CORNER RECORD

## BOONE COUNTY SURVEYOR'S OFFICE

NE 300-800

State Plane grid coordinates NAD83 (CORS96):

North: 1762241.59 East: 3166932.02 (U.S. survey feet)

Type of monument: Harrison, 4" disk 'Section Corner'

Depth: six inches below adjacent gravel road surface

Indiana tie card references:

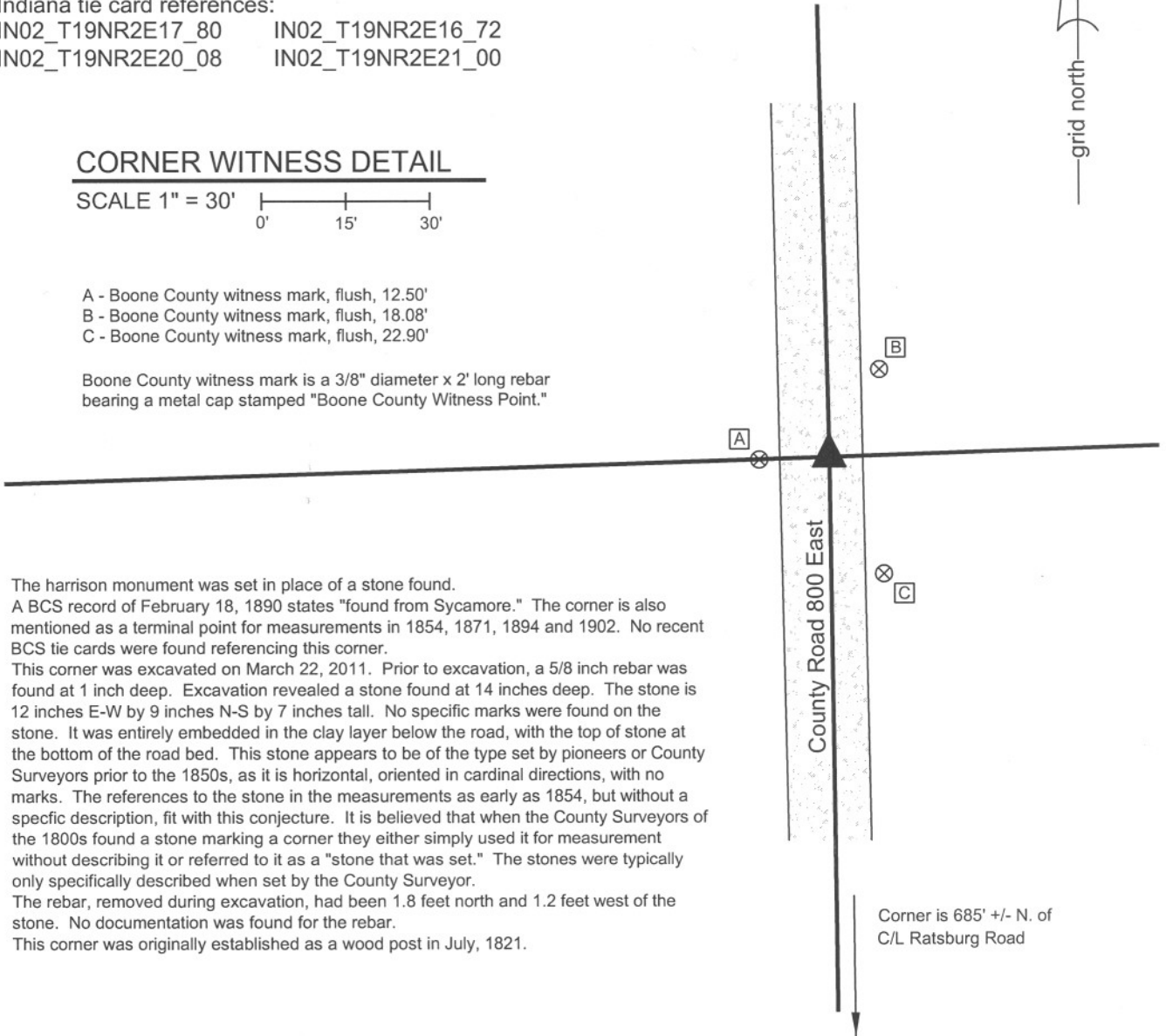
IN02\_T19NR2E17\_80      IN02\_T19NR2E16\_72  
 IN02\_T19NR2E20\_08      IN02\_T19NR2E21\_00

### CORNER WITNESS DETAIL

SCALE 1" = 30'

- A - Boone County witness mark, flush, 12.50'
- B - Boone County witness mark, flush, 18.08'
- C - Boone County witness mark, flush, 22.90'

Boone County witness mark is a 3/8" diameter x 2' long rebar bearing a metal cap stamped "Boone County Witness Point."



The harrison monument was set in place of a stone found. A BCS record of February 18, 1890 states "found from Sycamore." The corner is also mentioned as a terminal point for measurements in 1854, 1871, 1894 and 1902. No recent BCS tie cards were found referencing this corner. This corner was excavated on March 22, 2011. Prior to excavation, a 5/8 inch rebar was found at 1 inch deep. Excavation revealed a stone found at 14 inches deep. The stone is 12 inches E-W by 9 inches N-S by 7 inches tall. No specific marks were found on the stone. It was entirely embedded in the clay layer below the road, with the top of stone at the bottom of the road bed. This stone appears to be of the type set by pioneers or County Surveyors prior to the 1850s, as it is horizontal, oriented in cardinal directions, with no marks. The references to the stone in the measurements as early as 1854, but without a specific description, fit with this conjecture. It is believed that when the County Surveyors of the 1800s found a stone marking a corner they either simply used it for measurement without describing it or referred to it as a "stone that was set." The stones were typically only specifically described when set by the County Surveyor. The rebar, removed during excavation, had been 1.8 feet north and 1.2 feet west of the stone. No documentation was found for the rebar. This corner was originally established as a wood post in July, 1821.

Corner is 685' +/- N. of  
 C/L Ratsburg Road



*Kenneth E. Hedge*  
 Kenneth E. Hedge, County Surveyor

*James S. Swift*  
 James S. Swift, IN LS 20200054  
 March 1, 2012

Marion Township

Section 17 T19N, R2E	Section 16 T19N, R2E
Section 20 T19N, R2E	Section 21 T19N, R2E

PHOTOGRAPHIC DOCUMENTATION

Date of photography: March 22, 2011

View of the stone as first exposed.



The stone removed from the road bed. The scratch mark visible on top of the stone was made by the excavator at the time of excavation.



View from the north, looking across the stone and south along County Road 800 East.



For details and documentation, refer to related sheet "Section Corner Record."



# SECTION CORNER RECORD

NE 300-850

## BOONE COUNTY SURVEYOR'S OFFICE

State Plane grid coordinates NAD83 (CORS96):

North: 1762328.66 East: 3169605.46 (U.S. survey feet)

Type of monument: Harrison, 4" disk 'Section Corner'

Depth: One inch below adjacent road surface

Indiana tie card references:

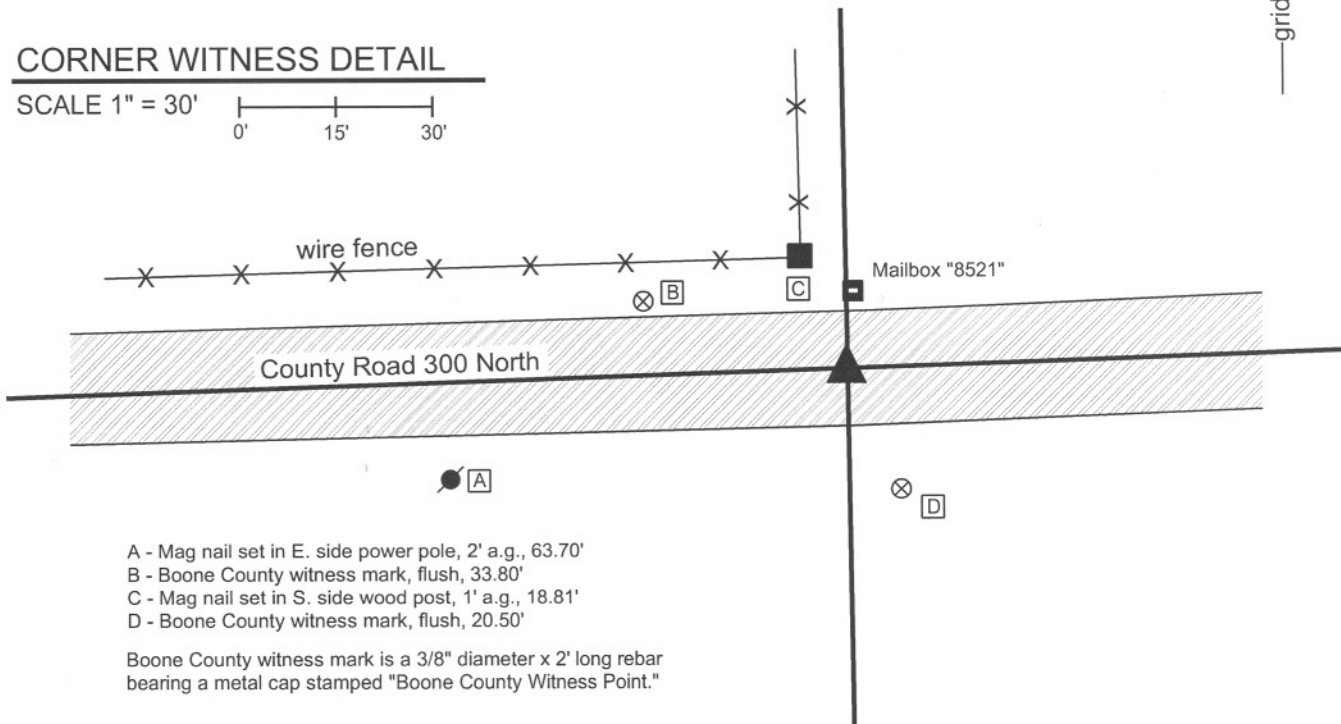
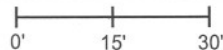
IN02\_T19NR2E16\_76

IN02\_T19NR2E21\_04



### CORNER WITNESS DETAIL

SCALE 1" = 30'



- A - Mag nail set in E. side power pole, 2' a.g., 63.70'
- B - Boone County witness mark, flush, 33.80'
- C - Mag nail set in S. side wood post, 1' a.g., 18.81'
- D - Boone County witness mark, flush, 20.50'

Boone County witness mark is a 3/8" diameter x 2' long rebar bearing a metal cap stamped "Boone County Witness Point."

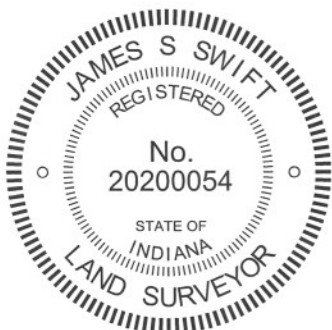
The harrison monument was set over a stone found.

A BCS record of August 10-13, 1854 states "Reestablished. Set Rock 10 by 14 in." A BCS record of March 17, 1887 states "Found point for B from walnut witness stump standing yet. The rock had been taken out."

This corner was excavated on October 27, 2011. Prior to excavation a nail in a plastic washer was found at the surface. The nail did not be of the type typically used by surveyors and appeared to be more of a carpenter's type nail. The nail was removed as a mag nail was found below the top seal layer of asphalt, 0.5 foot WSW of the surface nail. Excavation revealed a 1/2 inch diameter rebar at 4 inches deep 0.7 foot SW of the original nail, hence slightly SW of the found mag nail. Further excavation revealed the stone described in the 1854 record at 12 inches deep. The stone measures 10 inches E-W by 14 inches N-S with 7 inches of the top exposed. The entire height of the stone was not measured. The stone is embedded in the clay layer below the road bed. A vague chiseled "+" was found near the top, slightly East of the high point of the stone. No explanation is offered for the statement in the 1887 record that the rock had been taken out, as the rock found in 2011 is believed to be the same rock set in 1854.

All other evidence was removed and the found stone was left in place. A harrison monument was set over the top, high point of the stone, slightly west of the chiseled "+". The nail originally found at the surface had been 0.8 foot north and 0.6 foot west of the top, high point of the stone.

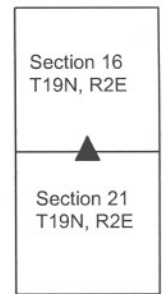
This corner was originally established as a wood corner post in July, 1821.



*Kenneth E. Hedge*  
Kenneth E. Hedge, County Surveyor

*James S. Swift*  
James S. Swift, IN LS 20200054  
March 1, 2012

Marion Twp



PHOTOGRAPHIC DOCUMENTATION

Date of photography: October 27, 2011

View of the stone as first exposed.



View of the stone more fully exposed.



View from the west looking across the stone and east along County Road 300 North. U.S. 421 crosses in the foreground.



For details and documentation, refer to related sheet "Section Corner Record."



# SECTION CORNER RECORD

NE 300-900

## BOONE COUNTY SURVEYOR'S OFFICE

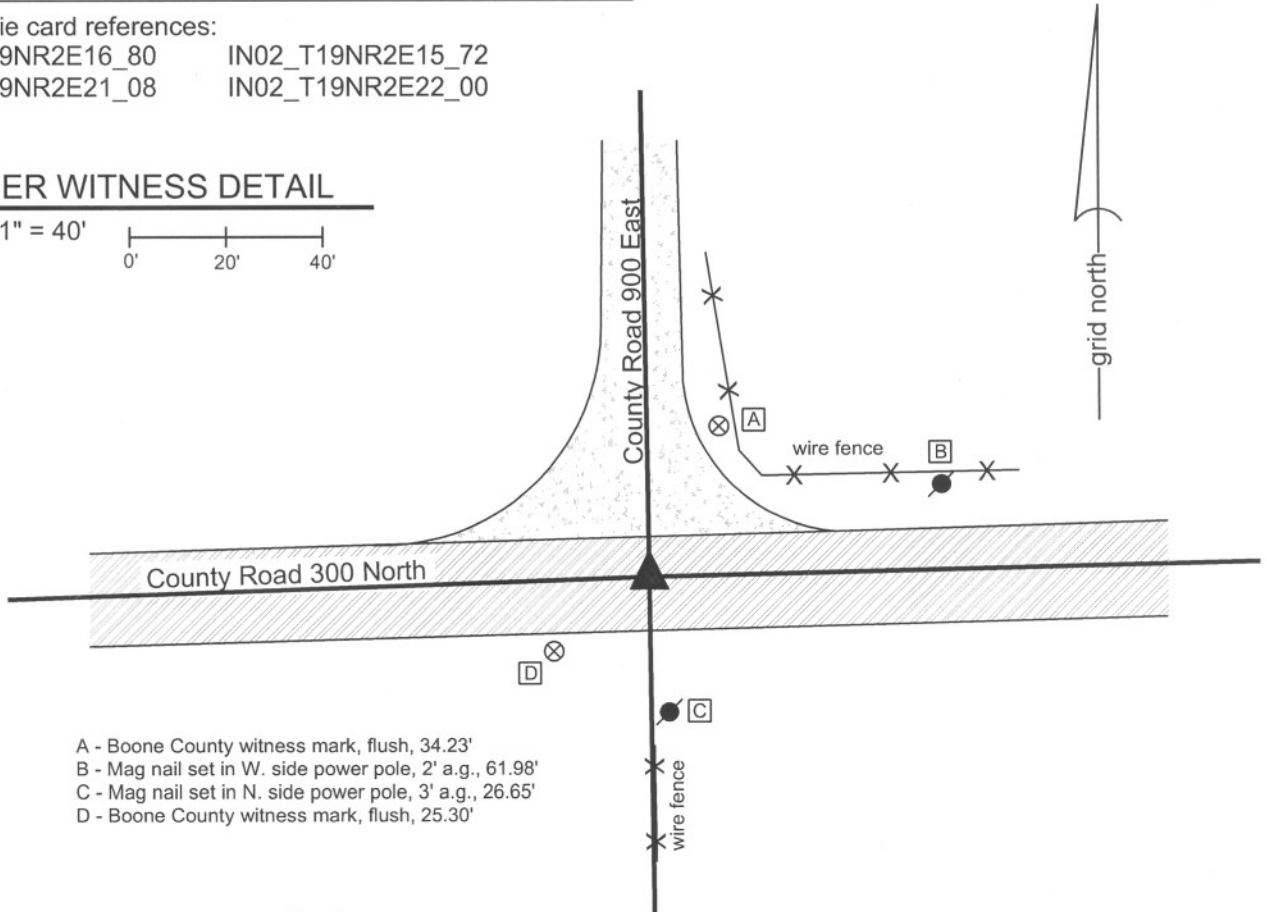
State Plane grid coordinates NAD83 (NSRS 2007):  
North: 1762420.07 East: 3172276.24 (U.S. survey feet)

Type of monument: Harrison, 4" disk 'Section Corner'  
Depth: two inches below adjacent road surface

Indiana tie card references:  
IN02\_T19NR2E16\_80      IN02\_T19NR2E15\_72  
IN02\_T19NR2E21\_08      IN02\_T19NR2E22\_00

### CORNER WITNESS DETAIL

SCALE 1" = 40'

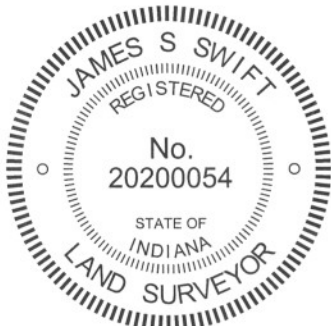


- A - Boone County witness mark, flush, 34.23'
- B - Mag nail set in W. side power pole, 2' a.g., 61.98'
- C - Mag nail set in N. side power pole, 3' a.g., 26.65'
- D - Boone County witness mark, flush, 25.30'

The Harrison monument was set over a stone found.

A BCS record of April 23, 1868 states "Reestablished by producing or extending the corrected line A, H, g and from a marked tree on the line G to F and some appearance of roots of one tree. Set a Rock 21.12 by 9 in. marked +." Field notes from an unknown source dated July 1980 state "No stone set I.P." This corner was excavated on September 9, 2010. Prior to excavation a mag nail was visible approximately 1 inch below the surrounding asphalt. A one inch diameter rebar, 13 inches long, was found directly below the mag nail. Fragments of a wood stake were found at 12 inches deep, several feet north of the rebar. The record stone was found below the wood stake. The stone is vertical, fully embedded in the clay with the top of the stone at the top of the clay layer below the road. The stone measures 12 inches E-W by 9 inches N-S with 15 inches exposed. An etched + is clearly visible on the top, of the stone. The rock does not have a uniform shape on the top and the etched "+" is not at the high point, but is at the approximate of the overall top of the stone. The high point of the stone, at the east edge of the top is 16 inches deep and the etched "+" is at 18 inches deep, as the top slopes down towards the west. The stone was left in place and the Harrison monument was set directly over the etched "+". The mag nail and rebar, both removed during excavation, had been 3.9 feet south and 0.7 foot east of the etched "+" on the stone.

This corner was originally established as a wood post in July, 1821.



*Kenneth E. Hedge*  
Kenneth E. Hedge, County Surveyor

*James S. Swift*  
James S. Swift, IN LS 20200054  
July 25, 2011

Marion Twp

Section 16 T19N, R2E	Section 15 T19N, R2E
Section 21 T19N, R2E	Section 22 T19N, R2E

PHOTOGRAPHIC DOCUMENTATION

Date of photography: September 2, 2010

Some fragments of the wood stake above the stone.



The stone as first exposed.



The stone being exposed. Further pictures are not available due to camera failure during excavation.



For details and documentation, refer to related sheet "Section Corner Record."