

SECTION CORNER RECORD

SE 300-800

BOONE COUNTY SURVEYOR'S OFFICE

State Plane grid coordinates NAD83 (NSRS 2007):

North: 1730761.50 East: 3167275.08 (U.S. survey feet)

Type of monument: Harrison, 4" disk 'Section Corner'

Depth: One inch below adjacent road surface

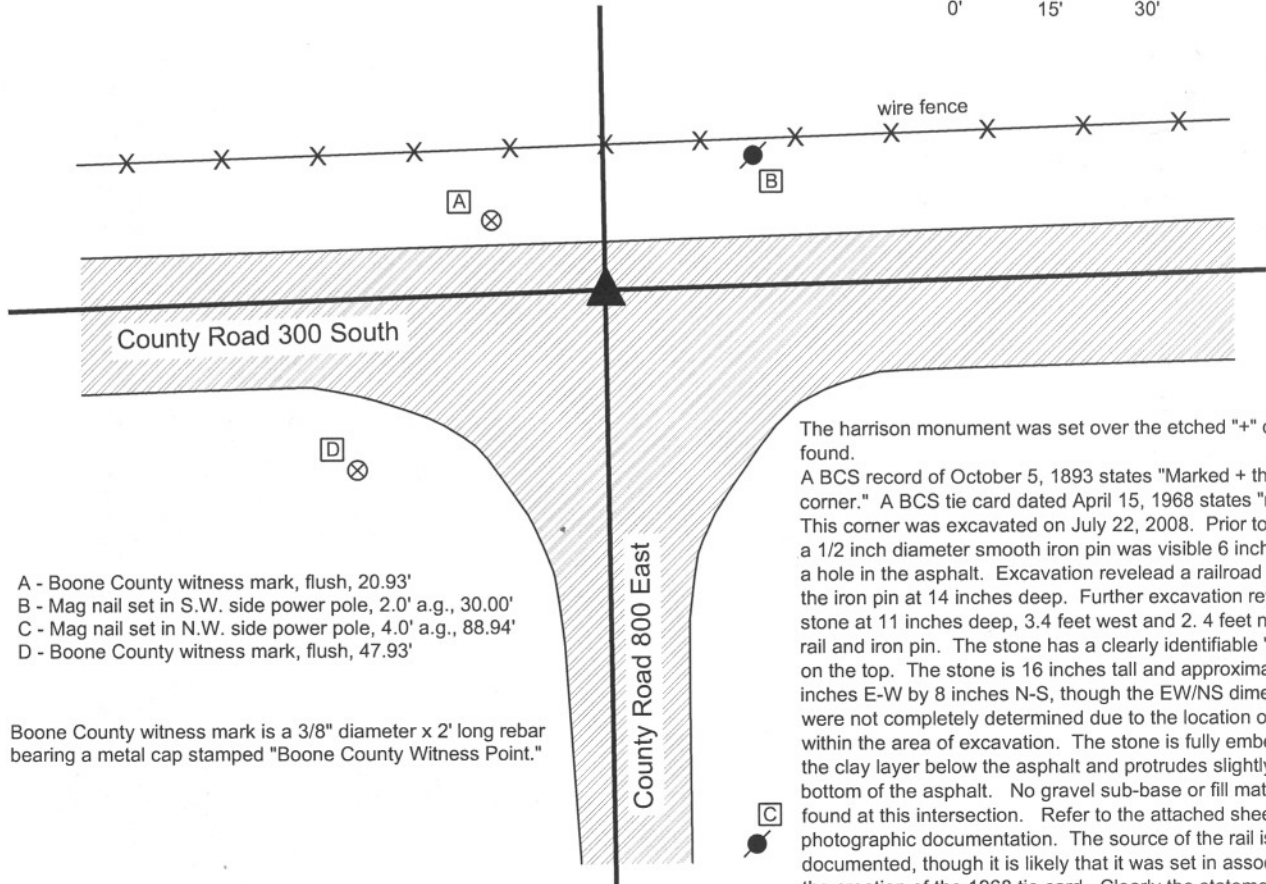
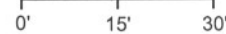
Indiana tie card references:

IN02_T18NR2E16_72 IN02_T18NR2E17_80

IN02_T18NR2E21_00 IN02_T18NR2E20_08

CORNER WITNESS DETAIL

SCALE 1" = 30'



- A - Boone County witness mark, flush, 20.93'
- B - Mag nail set in S.W. side power pole, 2.0' a.g., 30.00'
- C - Mag nail set in N.W. side power pole, 4.0' a.g., 88.94'
- D - Boone County witness mark, flush, 47.93'

Boone County witness mark is a 3/8" diameter x 2' long rebar bearing a metal cap stamped "Boone County Witness Point."

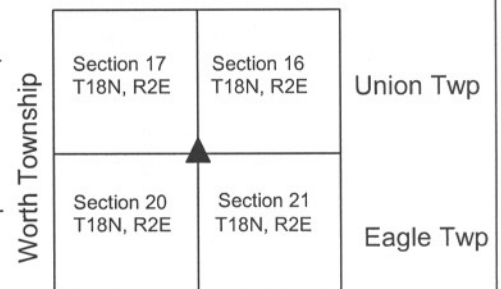
The harrison monument was set over the etched "+" on a stone found. A BCS record of October 5, 1893 states "Marked + the rock at corner." A BCS tie card dated April 15, 1968 states "no stone." This corner was excavated on July 22, 2008. Prior to excavation a 1/2 inch diameter smooth iron pin was visible 6 inches deep in a hole in the asphalt. Excavation revealed a railroad rail below the iron pin at 14 inches deep. Further excavation revealed a stone at 11 inches deep, 3.4 feet west and 2.4 feet north of the rail and iron pin. The stone has a clearly identifiable "+" etched on the top. The stone is 16 inches tall and approximately 8 inches E-W by 8 inches N-S, though the EW/NS dimensions were not completely determined due to the location of the stone within the area of excavation. The stone is fully embedded in the clay layer below the asphalt and protrudes slightly into the bottom of the asphalt. No gravel sub-base or fill material was found at this intersection. Refer to the attached sheet for photographic documentation. The source of the rail is not documented, though it is likely that it was set in association with the creation of the 1968 tie card. Clearly the statement of "no stone" on that tie card is erroneous. The statement of "marked + the rock at corner" on the 1893 tie card indicates that the rock was present prior to this and marked at that time. The marking, vertical orientation, the placement embedded in the clay and the lack of other similar object in the intersection leave minimal uncertainty as to whether this is the old corner stone, hence best available evidence of the original location of the corner. The harrison monument was set over the etched "+" on the stone. This corner was originally established in July, 1821.



Kenneth E. Hedge
Kenneth E. Hedge, County Surveyor

James S. Swift
James S. Swift, IN LS 20200054

March 11, 2009



PHOTOGRAPHIC DOCUMENTATION

Date of photography: July 22, 2008

Corner stone - view of south half of stone, exposed in corner of hole, from southeast.



View from East, looking across south half of stone along County Road 300 South.



Corner stone - overhead view from south, showing top of stone after hole was refilled and a new area cut out above stone.



Same view as to left, with chiseled "+" on the top of the stone enhanced for ease of visual detection.



SECTION CORNER RECORD

SE 300-850

BOONE COUNTY SURVEYOR'S OFFICE

State Plane grid coordinates NAD83 (NSRS 2007):

North: 1730829.70 East: 3169965.14 (U.S. survey feet)

Type of monument: Harrison, 4" disk 'Section Corner'

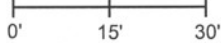
Depth: One inch below adjacent road surface

Indiana tie card references:

IN02_T18NR2E16_76 IN02_T18NR2E21_04

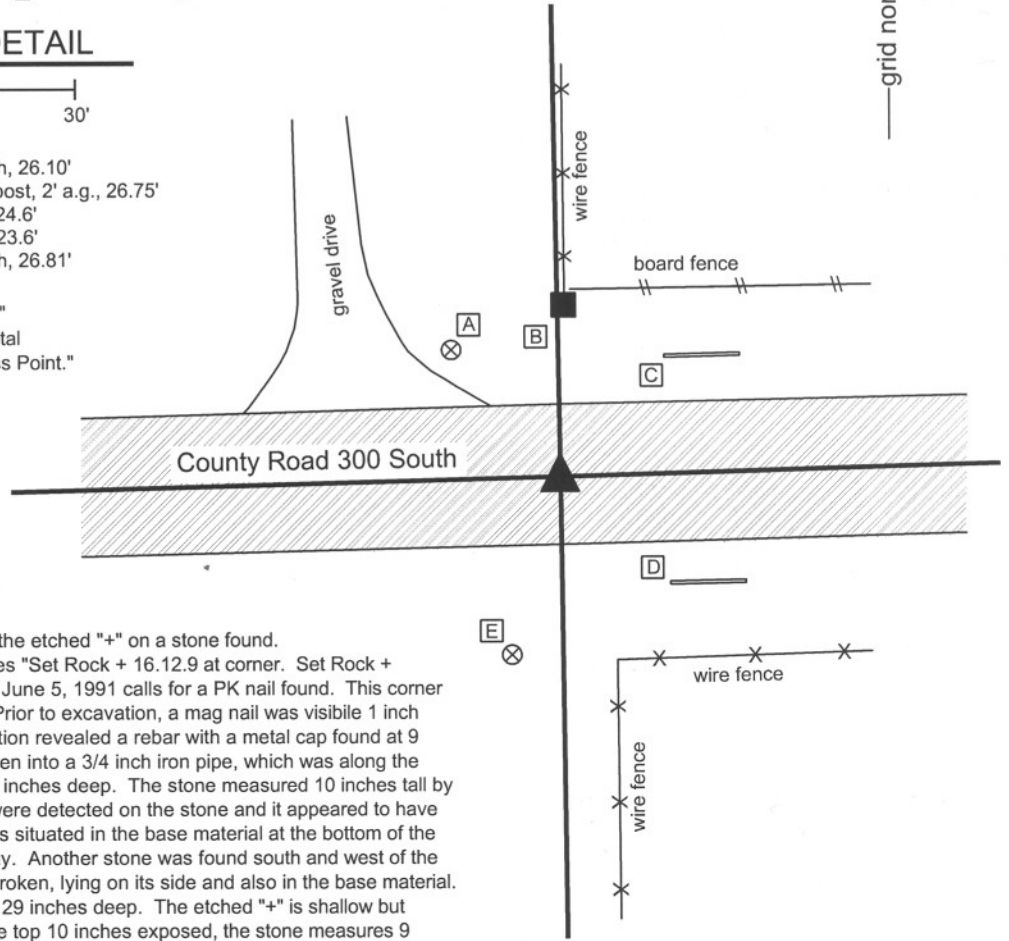
CORNER WITNESS DETAIL

SCALE 1" = 30'



- A - Boone County witness mark, flush, 26.10'
- B - Mag nail set in South side wood post, 2' a.g., 26.75'
- C - S.W. corner, concrete headwall, 24.6'
- D - N.W. corner, concrete headwall, 23.6'
- E - Boone County witness mark, flush, 26.81'

Boone County witness mark is a 3/8" diameter x 2' long rebar bearing a metal cap stamped "Boone County Witness Point."



The Harrison monument was set over the etched "+" on a stone found. A BCS record of October 5, 1893 states "Set Rock + 16.12.9 at corner. Set Rock + 7.12.14 under." A BCS tie card dated June 5, 1991 calls for a PK nail found. This corner was excavated on August 11, 2008. Prior to excavation, a mag nail was visible 1 inch below the surrounding grade. Excavation revealed a rebar with a metal cap found at 9 inches deep. The rebar had been driven into a 3/4 inch iron pipe, which was along the northwest edge of a stone found at 14 inches deep. The stone measured 10 inches tall by 11 inches by 7 inches. No markings were detected on the stone and it appeared to have been broken at the top. The stone was situated in the base material at the bottom of the road and was not embedded in the clay. Another stone was found south and west of the first stone and pipe. This stone was broken, lying on its side and also in the base material. The record stone was found below, at 29 inches deep. The etched "+" is shallow but clearly discernable on the top. With the top 10 inches exposed, the stone measures 9 inches E-W by 10 inches N-S and getting larger in the N-S dimensions. The top of the stone is at the top of the clay layer below the road. Hence, the entire stone is embedded in the clay. The Harrison monument was set directly over the etched "+" on the top of the stone. The mag nail had been 1.2 feet North and 0.6 foot East of the etched "+." This corner was originally established as a wood post in July, 1821.



Kenneth E. Hedge

 Kenneth E. Hedge, County Surveyor

James S. Swift

 James S. Swift, IN LS 20200054

March 11, 2009

Union Township

Section 16
T18N, R2E

Eagle Township

Section 21
T18N, R2E

PHOTOGRAPHIC DOCUMENTATION

Date of photography: August 11, 2008

Iron pipe, into which rebar was driven.



Stone against which the iron pipe was situated. Stone is in road sub-base, not clay.



Thin stone found.



Thin stone shifted to side, revealing top of record corner stone.



Record corner stone, overhead view.



Same picture as to left, with the vague but discernable etched "+" enhanced.



For details and documentation, refer to related sheet "Section Corner Record."

SECTION CORNER RECORD

SE 300-900

BOONE COUNTY SURVEYOR'S OFFICE

State Plane grid coordinates NAD83 (NSRS 2007):
 North: 1730903.33 East: 3172645.31 (U.S. survey feet)

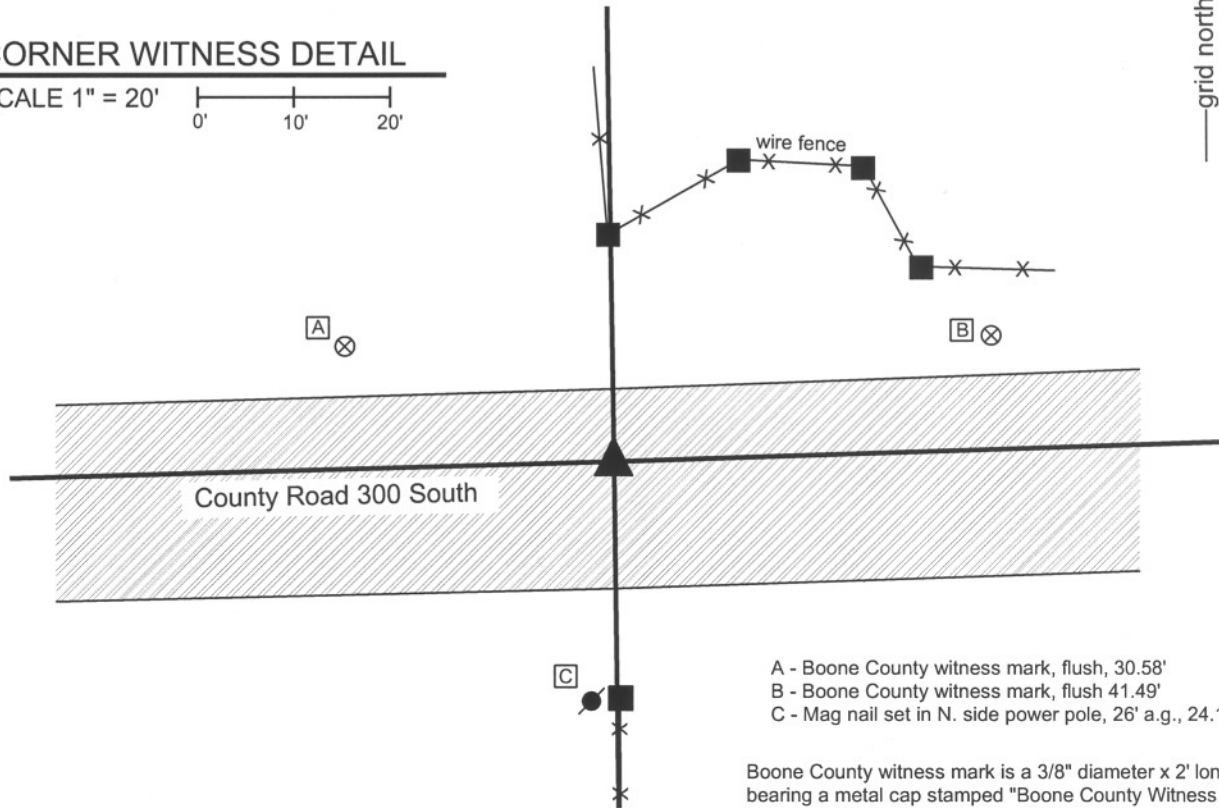
Type of monument: Harrison, 4" disk 'Section Corner'
 Depth: One inch below adjacent road surface

Indiana tie card references:
 IN02_T18NR2E15_72 IN02_T18NR2E16_80
 IN02_T18NR2E21_08 IN02_T18NR2E22_00



CORNER WITNESS DETAIL

SCALE 1" = 20'
 0' 10' 20'



- A - Boone County witness mark, flush, 30.58'
- B - Boone County witness mark, flush 41.49'
- C - Mag nail set in N. side power pole, 26' a.g., 24.1'

Boone County witness mark is a 3/8" diameter x 2' long rebar bearing a metal cap stamped "Boone County Witness Point."

The harrison monument was set in place of a mag nail found.

A BCS record of August 13-14, 1866 states "Reestablished. Set a Rock 12.8 by 8 in marked +. One under it 8.5 by 3 in marked + on top." No BCS tie cards were found for this corner. Excavation for this corner occurred on August 11, 2008. Prior to excavation a mag nail was visible 3 inches deep in a hole in the asphalt. Excavation revealed another, smaller nail directly below the mag. Excavation also revealed modern sub-base material below the asphalt. This appears to be an area of slight cut and it is considered most likely that the stone was removed during the previous construction. The two nails were located slightly north of the center of the road in line with the old corner post to the north and at the northerly prolongation of the old fence to the south. The harrison monument was set in the position of the nails. The area of excavation was 5 feet E-W by 6.5 feet N-S, centered on the nail E-W and extending to 4.5 feet south of the nail.

This corner was originally established as a wood post in July, 1821.



Kenneth E. Hedge
 Kenneth E. Hedge, County Surveyor

Eagle Twp

James S. Swift
 James S. Swift, IN LS 20200054

Union Twp

March 18, 2009

Section 16 T18N, R2E	Section 15 T18N, R2E
Section 21 T18N, R2E	Section 22 T18N, R2E

SECTION CORNER RECORD

SE 350-800

BOONE COUNTY SURVEYOR'S OFFICE

State Plane grid coordinates NAD83 (NSRS 2007):

North: 1728119.85 East: 3167314.70 (U.S. survey feet)

Type of monument: Harrison, 4" disk 'Section Corner'

Depth: One inch below adjacent road surface

Indiana tie card references:

IN02_T18NR2E20_44

IN02_T18NR2E21_36



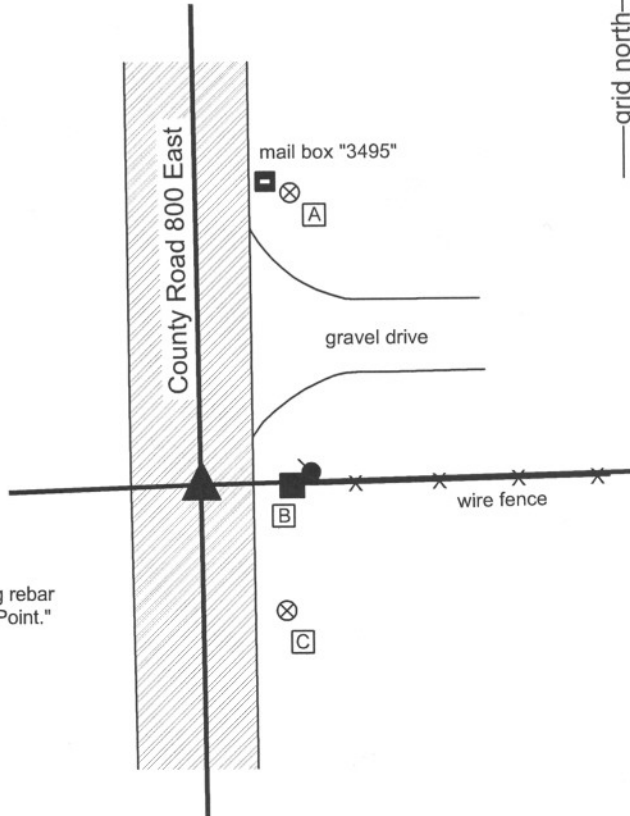
CORNER WITNESS DETAIL

SCALE 1" = 30'



- A - Boone County witness mark, flush, 47.77'
- B - Mag nail set in W. side wood post, 1' a.g., 14.15'
- C - Boone County witness mark, flush, 23.74'

Boone County witness mark is a 3/8" diameter x 2' long rebar bearing a metal cap stamped "Boone County Witness Point."



The Harrison monument was set over the top, high point of a stone found.

No specific BCS stone records were found identifying this corner, though measurements shown on 1853 and 1861 records include this corner, indicating the presence of some physical object from which to measure. No BCS tie cards were found for this corner. Excavation occurred on September 16, 2008. Prior to excavation, a 1/2 inch diameter rebar was found approximately 1 inch deep in the center of County Road 800 East at the westerly prolongation of the old fence to the east. The source of the rebar is not known. Excavation revealed a large stone 14 inches deep, slightly east of the rebar. The stone measures 20 inches E-W by 20 inches N-S by 8 inches thick and is fully embedded in the clay layer below the road. Several smaller rocks were found around the stone. The top, center of the stone is 0.1 foot south and 1.4 feet east of the position of the rebar (removed). The stone was accepted as the best evidence of the original location of the corner and the Harrison monument was set over the top, center of the stone, which was left in place.

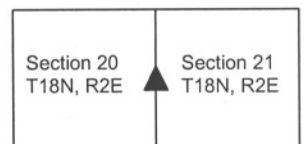
This corner was originally established as a wood post in July, 1821.



Kenneth E. Hedge
Kenneth E. Hedge, County Surveyor

James S. Swift
James S. Swift, IN LS 20200054
March 11, 2009

Worth Twp Eagle Twp



PHOTOGRAPHIC DOCUMENTATION

Date of photography: September 16, 2008

Corner stone - overhead view from south.



Corner stone - overhead view from west.



View from west looking across corner stone to wood end post to east. End post is the westerly terminus of an existing, old fence.



For details and documentation, refer to related sheet "Section Corner Record."

SECTION CORNER RECORD

SE 350-900

BOONE COUNTY SURVEYOR'S OFFICE

State Plane grid coordinates NAD83 (NSRS 2007):
North: 1728255.59 East: 3172679.79 (U.S. survey feet)

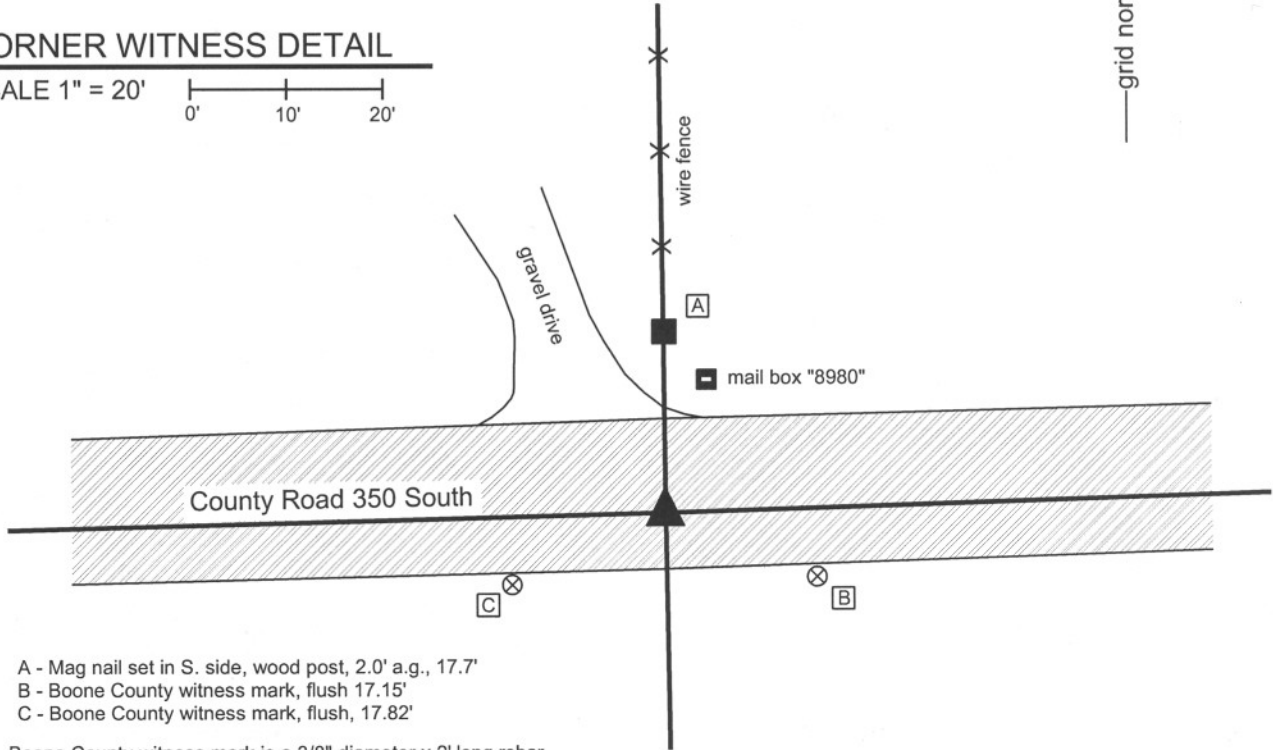
Type of monument: Harrison, 4" disk 'Section Corner'
Depth: One inch below adjacent road surface

Indiana tie card references:
IN02_T18NR2E21_44
IN02_T18NR2E22_36



CORNER WITNESS DETAIL

SCALE 1" = 20'
0' 10' 20'



- A - Mag nail set in S. side, wood post, 2.0' a.g., 17.7'
- B - Boone County witness mark, flush 17.15'
- C - Boone County witness mark, flush, 17.82'

Boone County witness mark is a 3/8" diameter x 2' long rebar bearing a metal cap stamped "Boone County Witness Point."

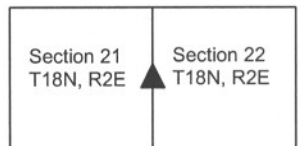
The harrison monument was set over the top, center of a stone found. No old BCS stone records or tie cards were found for this corner. Excavation occurred on June 11, 2008. Prior to excavation a railroad spike was visible in a hole 3 inches deep. The source of this monument is not known but it has been held for private surveys in this vicinity. Excavation yielded a stone found at 12 inches deep, the top, center of which is 1.1 foot south and 0.1 foot east of the railroad spike. The stone measures 16 inches N-S by 12 inches E-W by 10 inches thick. The bottom 4 inches are embedded in the clay layer below the road bed. The stone appeared to be stable and undisturbed. Refer to the attached sheet for photographic documentation. The harrison monument was set directly over the top, center of the stone. This corner was originally established as a wood post in July, 1821.



Kenneth E. Hedge
Kenneth E. Hedge, County Surveyor

James S. Swift
James S. Swift, IN LS 20200054
March 11, 2009

Eagle Township



PHOTOGRAPHIC DOCUMENTATION

Date of photography: June 11, 2008

Corner stone - overhead view from west.



Corner stone - overhead view from south.



View from east looking across the stone and along County Road 250 South to the west.



View from north looking across stone to the wood end post to the south. The end post is the northerly terminus of an old fence.



For details and documentation, refer to related sheet "Section Corner Record."

SECTION CORNER RECORD

SE 400-800

BOONE COUNTY SURVEYOR'S OFFICE

State Plane grid coordinates NAD83 (NSRS 2007):

North: 1725475.91 East: 3167346.25 (U.S. survey feet)

Type of monument: Harrison, 4" disk 'Section Corner'

Depth: One inch below road surface

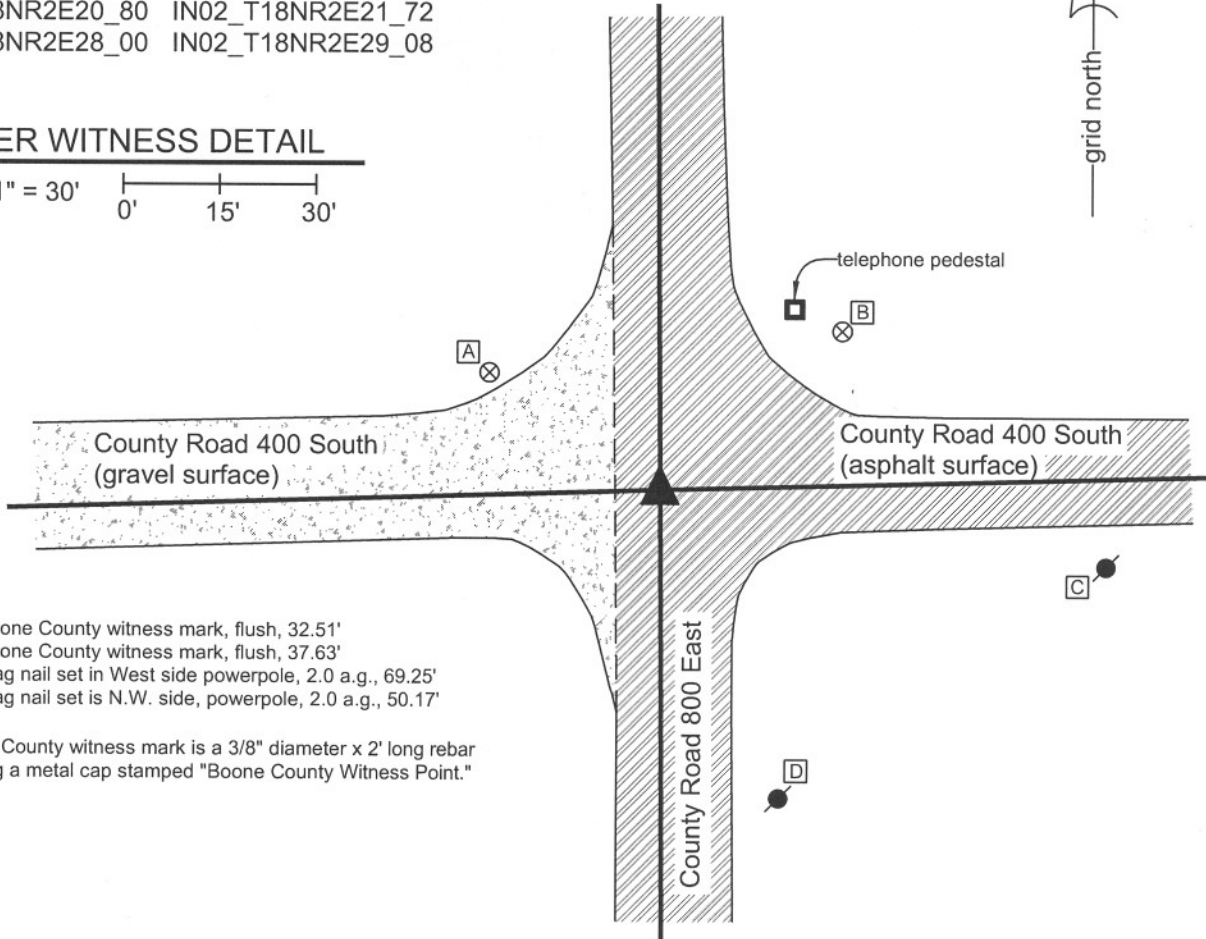
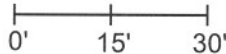
Indiana tie card references:

IN02_T18NR2E20_80 IN02_T18NR2E21_72

IN02_T18NR2E28_00 IN02_T18NR2E29_08

CORNER WITNESS DETAIL

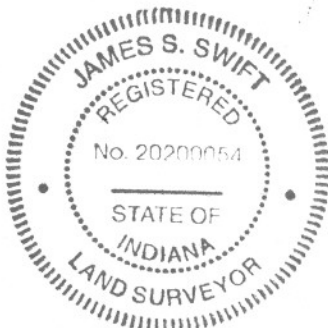
SCALE 1" = 30'



- A - Boone County witness mark, flush, 32.51'
- B - Boone County witness mark, flush, 37.63'
- C - Mag nail set in West side powerpole, 2.0 a.g., 69.25'
- D - Mag nail set is N.W. side, powerpole, 2.0 a.g., 50.17'

Boone County witness mark is a 3/8" diameter x 2' long rebar bearing a metal cap stamped "Boone County Witness Point."

The Harrison monument was set directly over the top of a stone found and accepted as marking the corner. The stone was exposed and the Harrison monument set on November 13, 2007. The stone matches the description from a BCS record of November 23 - 25, 1865: "Re-established from trees and old stake. Set rock 24.14 by 4 marked + on W. side and four small rocks around it." The top of the stone is 27 inches deep, firmly established in the clay sub-base and the "+" on the west side is clearly visible. A smaller stone was found at 12 inches deep, directly above the record stone. The smaller stone was within the gravel layer of the road and appears to have been set as a witness to the deeper, record stone. A railroad rail set on end was found 1.7' North and 1.8' East of the stone. A BCS tie card dated April 15, 1968 states "no stone found" and demonstrates a location for the corner but does not state what monument was set. It is likely that the railroad rail was set at this time. The rail has been held as the corner for surveys subsequent to 1968 but is clearly not the best evidence of the location of the original corner. The rail and the small witness stone were removed during excavation and the record stone was left in place. This corner was originally established in July, 1821.



Kenneth E. Hedge
 Kenneth E. Hedge, County Surveyor

J.S. Swift
 James S. Swift, IN LS 20200054
 January 2, 2008

Worth Township	Eagle Township
Section 20 T18N, R2E	Section 21 T18N, R2E
Section 29 T18N, R2E	Section 28 T18N, R2E

PHOTOGRAPHIC DOCUMENTATION

Date of photography: 11/13/2007

Photograph of record stone, set 11/23-11/25, 1865. Photo is taken from above, slightly to West.



Close-up of record stone, taken from above, showing west side of the top of the stone. The etched "+" is clearly visible on the west side, centered at 4 inches from top of stone. The stone was exposed to 9 inches below the top, at which point it was approximately 8 inches wide by 4 inches thick and completely stable in position. One of the "four small rocks around it" was found on the east side. The other surrounding rocks were not exposed. The stone was not further exposed in order to preserve the stability of its position.



Photograph taken from Northeast, showing area of excavation as it is being re-filled with gravel. The main hole is 4 feet by 4 feet centered on the railroad rail (see notes, other sheet). Record stone was found in bottom of the offset square in the S.W. corner of the main hole. The small witness stone found above the record stone is shown along with several small rocks on pavement at the top right corner of the photograph.



Record stone at bottom of hole

SECTION CORNER RECORD

SE 400-850

BOONE COUNTY SURVEYOR'S OFFICE

State Plane grid coordinates NAD83 (NSRS 2007):
North: 1725547.99 East: 3170033.61 (U.S. survey feet)

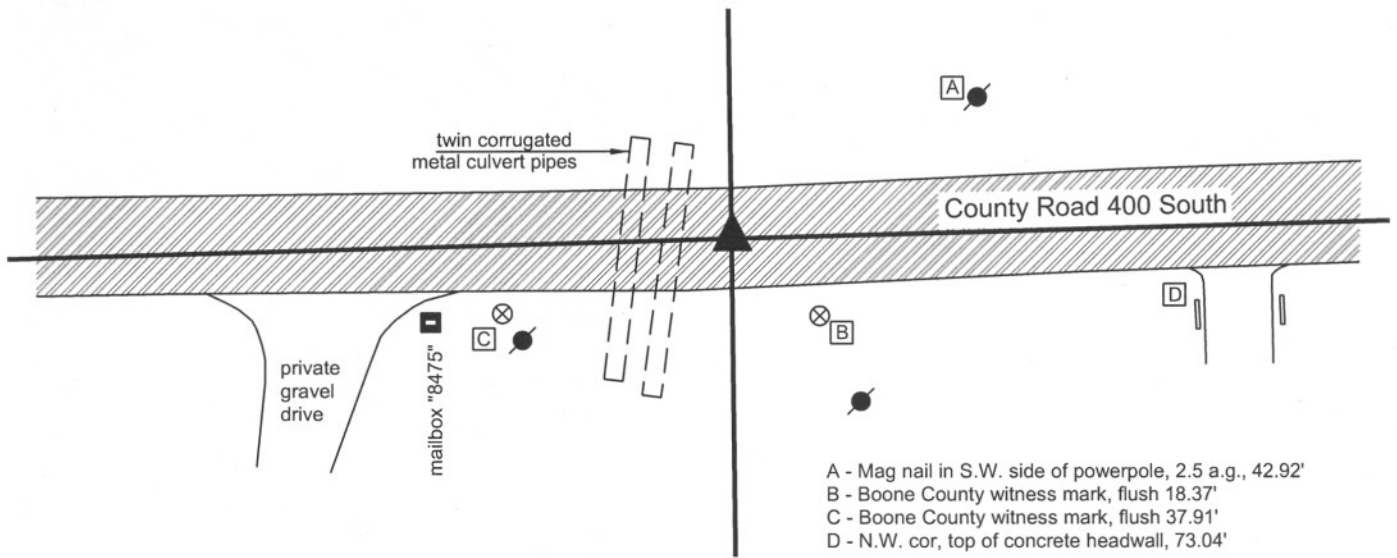
Type of monument: Harrison, 4" disk 'Section Corner'
Depth: 0.1' below adjacent road surface

Indiana tie card references:
IN02_T18NR2E21_76
IN02_T18NR2E28_04



CORNER WITNESS DETAIL

SCALE 1" = 30'
0' 15' 30'



- A - Mag nail in S.W. side of powerpole, 2.5 a.g., 42.92'
- B - Boone County witness mark, flush 18.37'
- C - Boone County witness mark, flush 37.91'
- D - N.W. cor, top of concrete headwall, 73.04'

Boone County witness mark is a 3/8" diameter x 2' long rebar bearing a metal cap stamped "Boone County Witness Point."

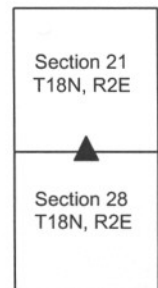
The Harrison monument was set over the chiseled "+" on the top of a stone found and accepted as marking the corner. The top of the stone is approximately 8 inches below the road surface and measures 6 inches by 6 inches. The stone is approximately 12 inches tall and is set vertically, with the bottom 9 inches fully embedded in the clay sub-base. The stone is located in the center of County Road 400 North. A railroad spike which was the visible monument prior to excavation was found 1.7' S and 0.1' E of the "+" on the stone, and was removed during excavation. The railroad spike has been held for recent private surveys. No previous BCS record was found for either the stone or the railroad spike. Due to the shallow depth of the stone, the Harrison monument was truncated at approximately 8 inches. This corner was originally established in July, 1821.



Kenneth E. Hedge
Kenneth E. Hedge, County Surveyor

J. S. Swift
James S. Swift, IN LS 20200054
January 30, 2008

Eagle Township



PHOTOGRAPHIC DOCUMENTATION

Date of photography: 11/29/2007

View of the stone from above, oriented with north towards the top of the page. The top of the stone is 8 inches below the surface of the road. The stone is 6 inches by 6 inches near the top and 12 inches tall, set vertically and well embedded in the clay sub-base of the road. The stone was left in place and a Harrison monument was truncated at 8 inches and set over the high point of the top of the stone.



Close-up view of the stone, brushed off at the top to show the vague + etched in the top. The + is enhanced in this photo for ease of visual detection.



View of the stone from the west, looking towards the east.



SECTION CORNER RECORD

SE 400-900

BOONE COUNTY SURVEYOR'S OFFICE

State Plane grid coordinates NAD83 (NSRS 2007):

North: 1725616.31 East: 3172723.18 (U.S. survey feet)

Type of monument: Harrison, 4" disk 'Section Corner'

Depth: One inch below adjacent road surface

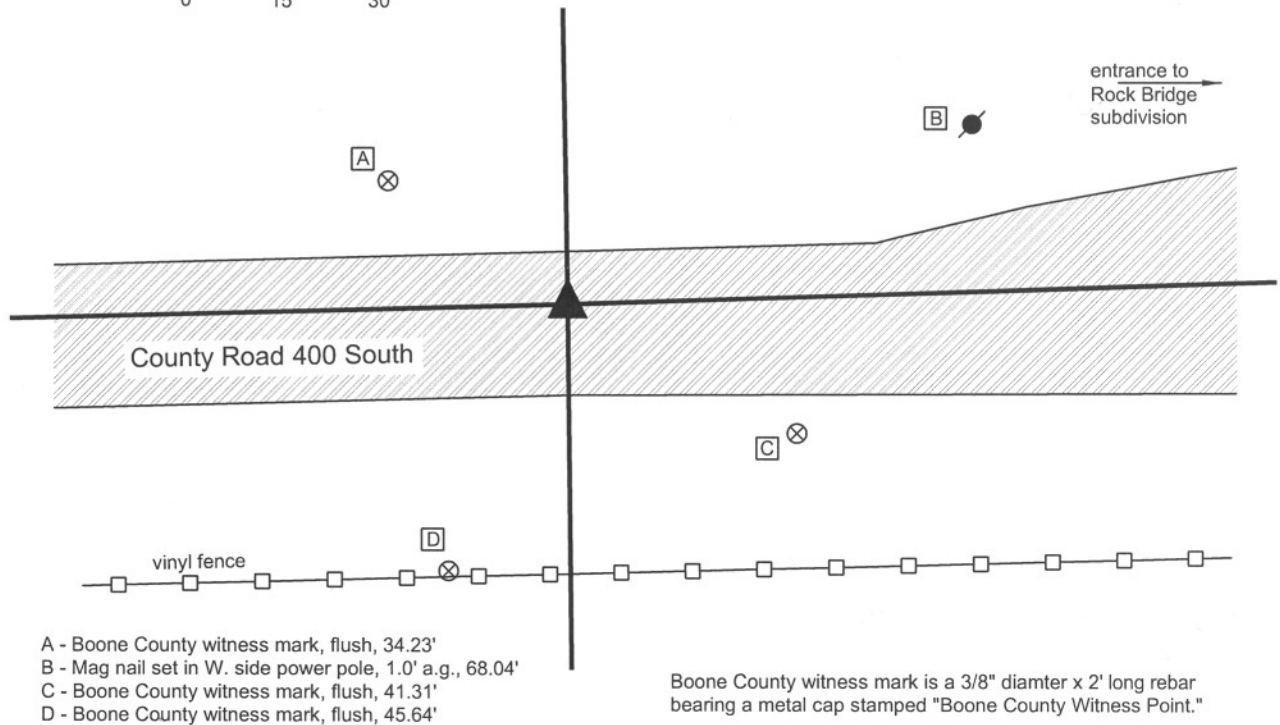
Indiana tie card references:

IN02_T18NR2E21_80 IN02_T18NR2E22_72

IN02_T18NR2E28_08 IN02_T18NR2E27_00

CORNER WITNESS DETAIL

SCALE 1" = 30'



- A - Boone County witness mark, flush, 34.23'
- B - Mag nail set in W. side power pole, 1.0' a.g., 68.04'
- C - Boone County witness mark, flush, 41.31'
- D - Boone County witness mark, flush, 45.64'

Boone County witness mark is a 3/8" diamter x 2' long rebar bearing a metal cap stamped "Boone County Witness Point."

The harrison monument was set in the position of a railroad spike found 3 feet north of the approximate center of County Road 400 South and 6 inches below grade. The railroad spike is demonstrated on several surveys and has been held as the corner for the perimeter surveys of the adjacent subdivisions. No BCS records were found for this corner beyond the original establishment of the corner in July, 1821. An area 4 feet E-W by 7 feet N-S, centered on the railroad spike in the E-W dimension and extended 4 feet south and 3 feet north of the spike was excavated November 29, 2007. Excavation yielded a 5/8 inch rebar and 1/2 inch i.d. iron pipe seperated by approximately 3 inches E-W. The railroad spike was above these monuments and centered between them in the E-W dimension. No other monuments were found. The railroad spike, rebar and pipe were all removed during excavation and the harrison set in the position of the railroad spike. This corner was originally established as a wood post in July 1821.

Eagle Township



Kenneth E. Hedge
 Kenneth E. Hedge, County Surveyor

James S. Swift
 James S. Swift, IN LS 20200054
 March 11, 2009

Section 21 T18N, R2E	Section 22 T18N, R2E
Section 28 T18N, R2E	Section 27 T18N, R2E