

# SECTION CORNER RECORD

SE 300-200


## BOONE COUNTY SURVEYOR'S OFFICE

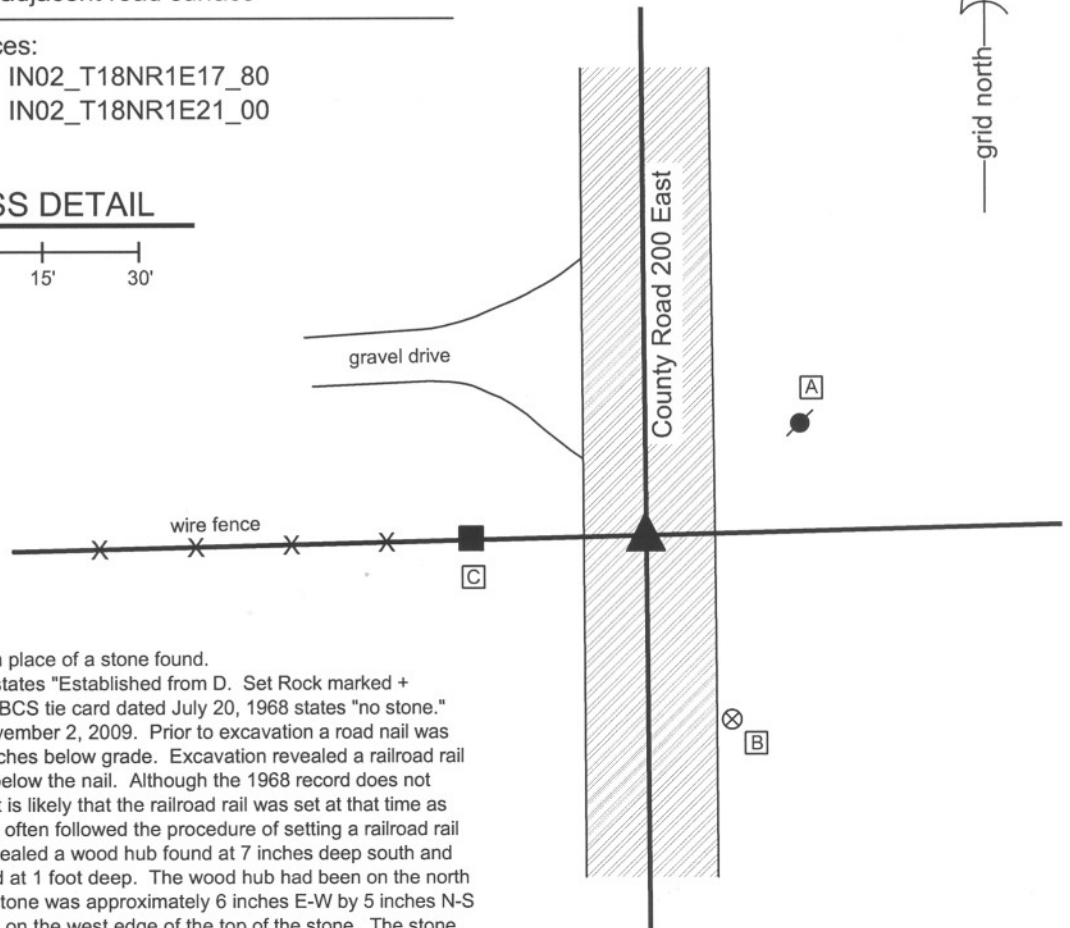
State Plane grid coordinates NAD83 (NSRS 2007):  
 North: 1730003.10 East: 3135269.676 (U.S. survey feet)

Type of monument: Harrison, 4" disk 'Section Corner'  
 Depth: One inch below adjacent road surface

Indiana tie card references:  
 IN02\_T18NR1E16\_72 IN02\_T18NR1E17\_80  
 IN02\_T18NR1E20\_08 IN02\_T18NR1E21\_00

### CORNER WITNESS DETAIL

SCALE 1" = 30'  




The harrison monument was set in place of a stone found. A BCS record of May 8 - 9, 1901 states "Established from D. Set Rock marked + 12.10.8 1/2 brick underneath." A BCS tie card dated July 20, 1968 states "no stone." This corner was excavated on November 2, 2009. Prior to excavation a road nail was visible in a hole in the asphalt 2 inches below grade. Excavation revealed a railroad rail on end at 9 inches deep, directly below the nail. Although the 1968 record does not specify what monument was set, it is likely that the railroad rail was set at that time as BCS field crews of that time-frame often followed the procedure of setting a railroad rail at the corner. Excavation also revealed a wood hub found at 7 inches deep south and east of the rail. A stone was found at 1 foot deep. The wood hub had been on the north side of the stone. The top of the stone was approximately 6 inches E-W by 5 inches N-S and an etched "+" is clearly visible on the west edge of the top of the stone. The stone was removed and measured. The maximum dimensions of the stone are 10 inches tall by 8 inches E-W by 6 inches N-S. This is uniformly 2 inches smaller than the dimensions reported in the record. The record also calls for 1/2 brick underneath, which was found directly below the stone. The 1/2 brick was somewhat deteriorated was visible in the form of various small pieces. The stone was accepted as being the same monument set in 1901, but it is not clear why the 1901 record describes the stone as 2 inches larger in all dimensions than it actually is. The harrison monument was set in place of the stone at the same horizontal position as the top, high point of the stone, in line with the etched + on the west side. The nail and railroad rail, both removed during excavation, were 0.4 foot north and 0.6 foot west of the top, high point of the stone. This corner was originally established as a wood post in June, 1820.

- A - Mag nail set in S. side power pole, 2.0' a.g., 28.7'
- B - Boone County witness mark, flush, 31.68'
- C - Mag nail set in E. side wood post, 0.5' a.g., 25.6'

Boone County witness mark is a 3/8" diameter x 2' long rebar bearing a metal cap stamped "Boone County Witness Point."



*Kenneth E. Hedge*  
 Kenneth E. Hedge, County Surveyor

Center Twp

*James S. Swift*  
 James S. Swift, IN LS 20200054  
 July 14, 2010

Perry Twp

Section 17 T18N, R1E	Section 16 T18N, R1E
Section 20 T18N, R1E	Section 21 T18N, R1E

PHOTOGRAPHIC DOCUMENTATION  
Date of photography: November 2, 2009

View of the stone as first exposed.  
View from above and west.



Close-up on the stone, showing the etched mark on the west side of the top of the stone.



View of the stone from above and north.



For details and documentation, refer to related sheet "Section Corner Record."

View from the south, looking across the stone and north along County Road 200 East.



# SECTION CORNER RECORD

## BOONE COUNTY SURVEYOR'S OFFICE

SE 300-250

State Plane grid coordinates NAD83 (NSRS 2007):

North: 1730068.35 East: 3137938.53 (U.S. survey feet)

Type of monument: Harrison, 4" disk 'Section Corner'

Depth: One inch below adjacent road surface

Indiana tie card references:

IN02\_T18NR1E16\_76

IN02\_T18NR1E21\_04

### CORNER WITNESS DETAIL

SCALE 1" = 30'

- A - Boone County witness mark, flush, 17.71'
- B - Mag nail is in W. side power pole, 2.0' a.g., 101.1'
- C - Boone County witness mark, flush, 60.21'

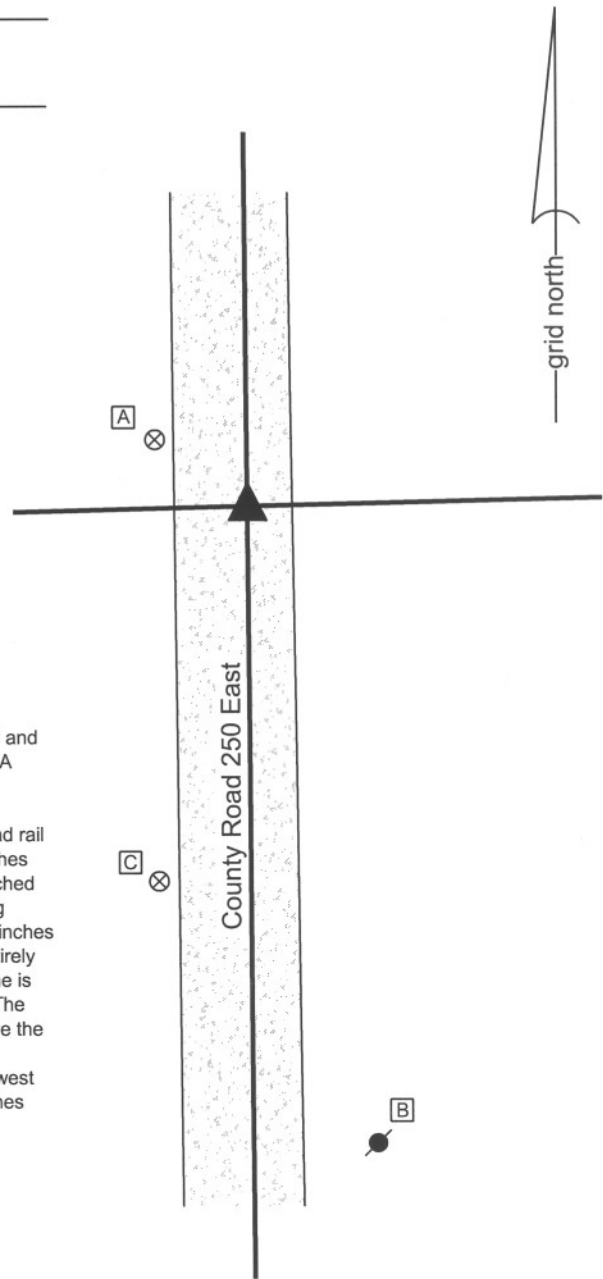
Boone County witness mark is a 3/8" diameter x 2' long rebar bearing a metal cap stamped "Boone County Witness Point."

The harrison monument was set over a stone found.

A BCS record April 10, 1900 states "Re-est. by running line from "F" through "8" and "4" and by running line from "C" through "b". Set stone (very large) marked "+" A BCS tie card dated October 25, 2005 shows the corner as a steel rail with no documentation of source.

This corner was excavated on December 15, 2009. Prior to excavation a railroad rail was found at 7 inches below grade. Excavation revealed a stone found at 9 inches below grade well north of the railroad rail. The stone has a clearly visible "+" etched on the top and is fully embedded in the clay layer below the road bed, protruding approximately 2 inches out of the clay into the bottom of the road bed. With 10 inches exposed, the stone measures 10 inches N-S by 13 inches E-W and remains entirely stable, indicating that it extends deeper into the clay. The south side of the stone is relatively flat and vertical. The harrison monument was truncated at 4 inches. The top of the stone was encased in concrete and the harrison was set directly above the etched "+" at approximately 5 inches below the surface of the gravel road. The railroad rail, removed during excavation, had been 5.3 feet south and 0.15 foot west of the etched "+" on the stone. It is noted that a straight line connecting the stones found at the section corners 1/2 mile west and east falls approximately midway between the positions of the stone and steel rail.

This corner was originally established as wood corner post in June, 1820.



*Kenneth E. Hedge*  
 Kenneth E. Hedge, County Surveyor

*James S. Swift*  
 James S. Swift, IN LS 20200054  
 July 14, 2010

Center Twp	Section 16 T18N, R1E
Perry Twp	Section 21 T18N, R1E

PHOTOGRAPHIC DOCUMENTATION

Date of photography: December 15, 2009

View of the stone as first exposed.



View of the stone more fully exposed.



View from the south, looking across the stone and north along County Road 250 East.



For details and documentation, refer to related sheet "Section Corner Record."

# SECTION CORNER RECORD

# SE 300-300

## BOONE COUNTY SURVEYOR'S OFFICE

State Plane grid coordinates NAD83 (NSRS 2007):

North: 1730128.28 East: 3140594.30 (U.S. survey feet)

Type of monument: Harrison, 4" disk 'Section Corner'

Depth: One inch below adjacent road surface

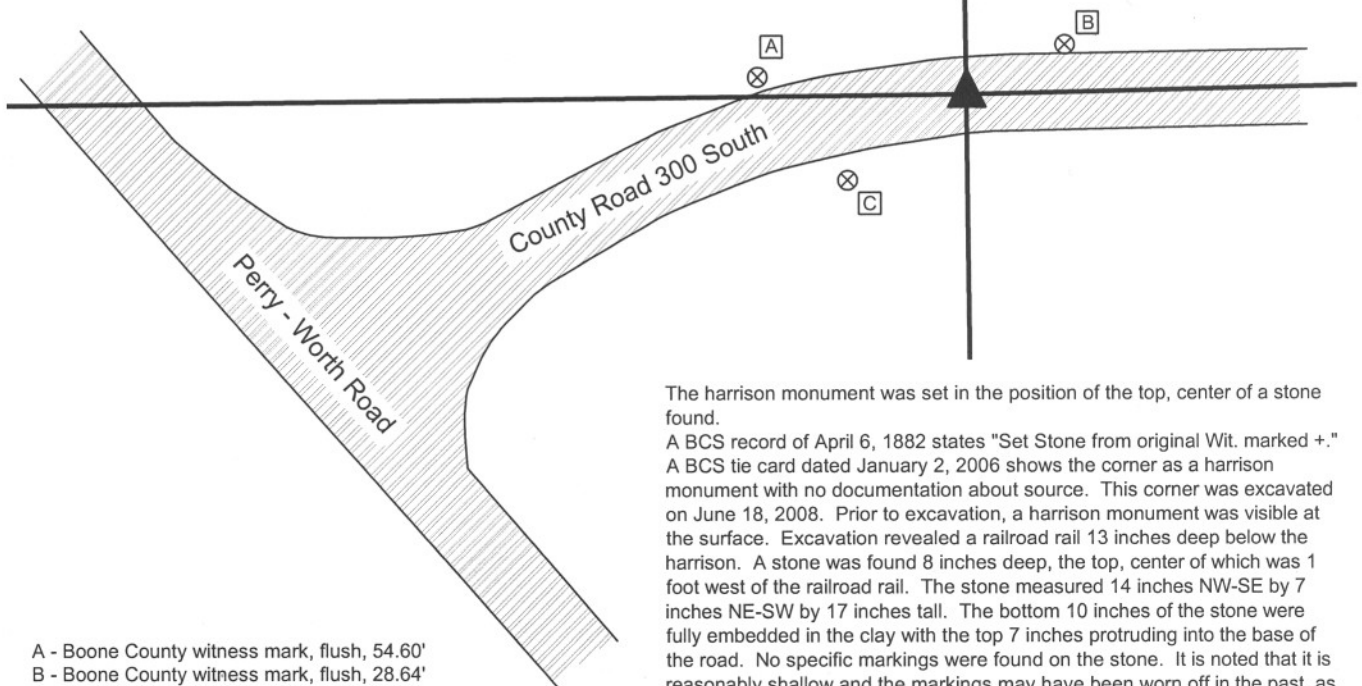
Indiana tie card references:

IN02\_T18NR1E15\_72    IN02\_T18NR1E16\_80

IN02\_T18NR1E21\_08    IN02\_T18NR1E22\_00

### CORNER WITNESS DETAIL

SCALE 1" = 50'



- A - Boone County witness mark, flush, 54.60'
- B - Boone County witness mark, flush, 28.64'
- C - Boone County witness mark, flush, 38.06'

Boone County witness mark is a 3/8" diameter x 2' long rebar bearing a metal cap stamped "Boone County Witness Point."

The harrison monument was set in the position of the top, center of a stone found.

A BCS record of April 6, 1882 states "Set Stone from original Wit. marked +."

A BCS tie card dated January 2, 2006 shows the corner as a harrison monument with no documentation about source. This corner was excavated on June 18, 2008. Prior to excavation, a harrison monument was visible at the surface. Excavation revealed a railroad rail 13 inches deep below the harrison. A stone was found 8 inches deep, the top, center of which was 1 foot west of the railroad rail. The stone measured 14 inches NW-SE by 7 inches NE-SW by 17 inches tall. The bottom 10 inches of the stone were fully embedded in the clay with the top 7 inches protruding into the base of the road. No specific markings were found on the stone. It is noted that it is reasonably shallow and the markings may have been worn off in the past, as has been observed on other stones. A small rock and remnants of wood were found along the bottom of the north edge of the stone. It is noted that the top of the rail was below the top of the stone. No source was found for the establishment of the rail. The stone was removed and the harrison monument was set in the position of the top, center of the stone.

This corner was originally established as a wood post in June, 1820.



*Kenneth E. Hedge*  
 Kenneth E. Hedge, County Surveyor

Center Township

*James S. Swift*  
 James S. Swift, IN LS 20200054

Perry Township

March 11, 2009

Section 16 T18N, R1E	Section 15 T18N, R1E
Section 21 T18N, R1E	Section 22 T18N, R1E

PHOTOGRAPHIC DOCUMENTATION

Date of photography: June 18, 2008

Corner stone and railroad rail.  
Overhead view from North.



Corner stone and railroad rail.  
Overhead view from West.



View of corner stone showing clay at west end.  
Overhead view from North.



Corner stone removed from ground, showing extent to which stone was embedded in clay. Approximately 10" of stone was in clay and 7" protruding into bottom of road bed.



For details and documentation, refer to related sheet "Section Corner Record."

# SECTION CORNER RECORD

SE 350-200

## BOONE COUNTY SURVEYOR'S OFFICE

State Plane grid coordinates NAD83 (NSRS 2007):

North: 1727348.13 East: 3135290.54 (U.S. survey feet)

Type of monument: Harrison, 4" disk 'Section Corner'

Depth: One inch below adjacent road surface

Indiana tie card references:

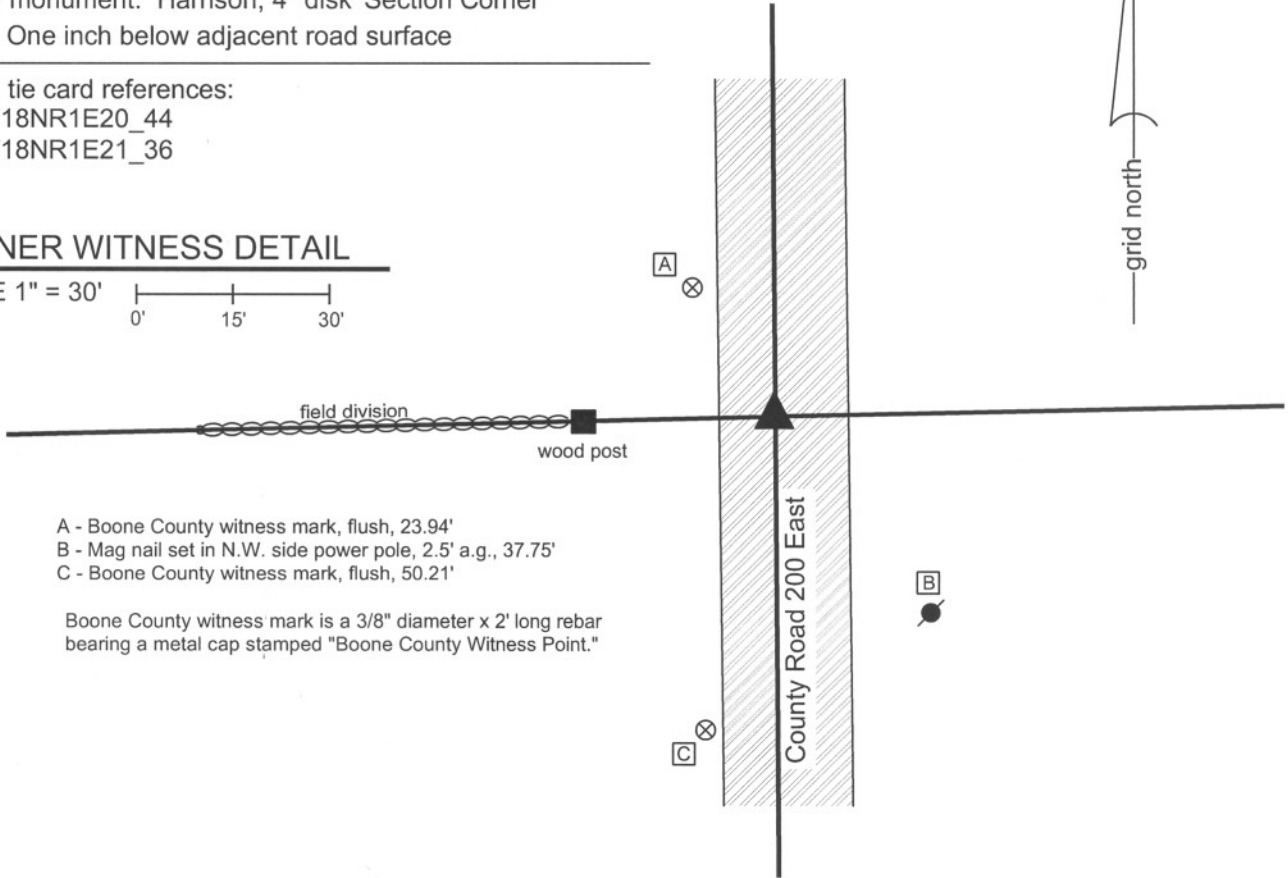
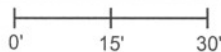
IN02\_T18NR1E20\_44

IN02\_T18NR1E21\_36



### CORNER WITNESS DETAIL

SCALE 1" = 30'



- A - Boone County witness mark, flush, 23.94'
- B - Mag nail set in N.W. side power pole, 2.5' a.g., 37.75'
- C - Boone County witness mark, flush, 50.21'

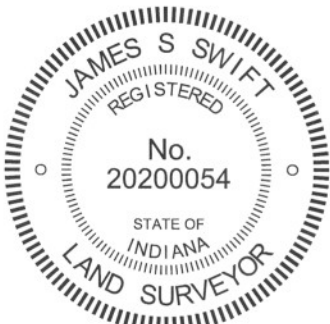
Boone County witness mark is a 3/8" diameter x 2' long rebar bearing a metal cap stamped "Boone County Witness Point."

The harrison monument was set in place of a railroad spike found.

A BCS record of June 18-19, 1866 states "a stake set in a prairie." A BCS record of March 6, 1873 states "Reestablished, set stake in ditch..." A BCS tie card dated May 4, 1992 shows the corner as a railroad spike found.

A railroad spike found at 2 inches below the surface of the asphalt appeared to be the same monument as shown on the 1992 tie card. The specific ties from 1992 are no longer present, but the graphical representation on the card showed the corner as being in the approximate center of County Road 200 East at the easterly extension of a fence to the west. The fence has been removed but a post from the fence remains and a clear field division is present to the west of the post. The railroad spike was found in the approximate center of the road at the extension of the field division as extended through the existing post. This corner falls in an area of substantial fill material. The 1876 map of Boone County shows County Road 200 East as being East of the section line in the vicinity of the corner and shows the ditch referenced in the 1873 record crossing the corner. The road now runs generally straight and follows the section line closely, as evidenced by stones found to the north and south. Clearly, the open ditch has been filled and the current road constructed over fill material. Substantial excavation was not performed and the railroad spike was held as the corner. The railroad spike was removed and replaced with a harrison monument. No other monument or physical evidence was found below the railroad spike.

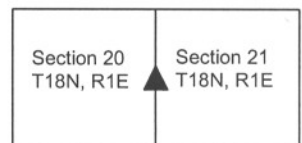
This corner was originally established as a wood post in 1820.



*Kenneth E. Hedge*  
Kenneth E. Hedge, County Surveyor

*James S. Swift*  
James S. Swift, IN LS 20200054  
July 25, 2011

Eagle Township



# SECTION CORNER RECORD

# SE 350-300

## BOONE COUNTY SURVEYOR'S OFFICE

State Plane grid coordinates NAD83 (NSRS 2007):  
North: 1727469.05 East: 3140622.48 (U.S. survey feet)

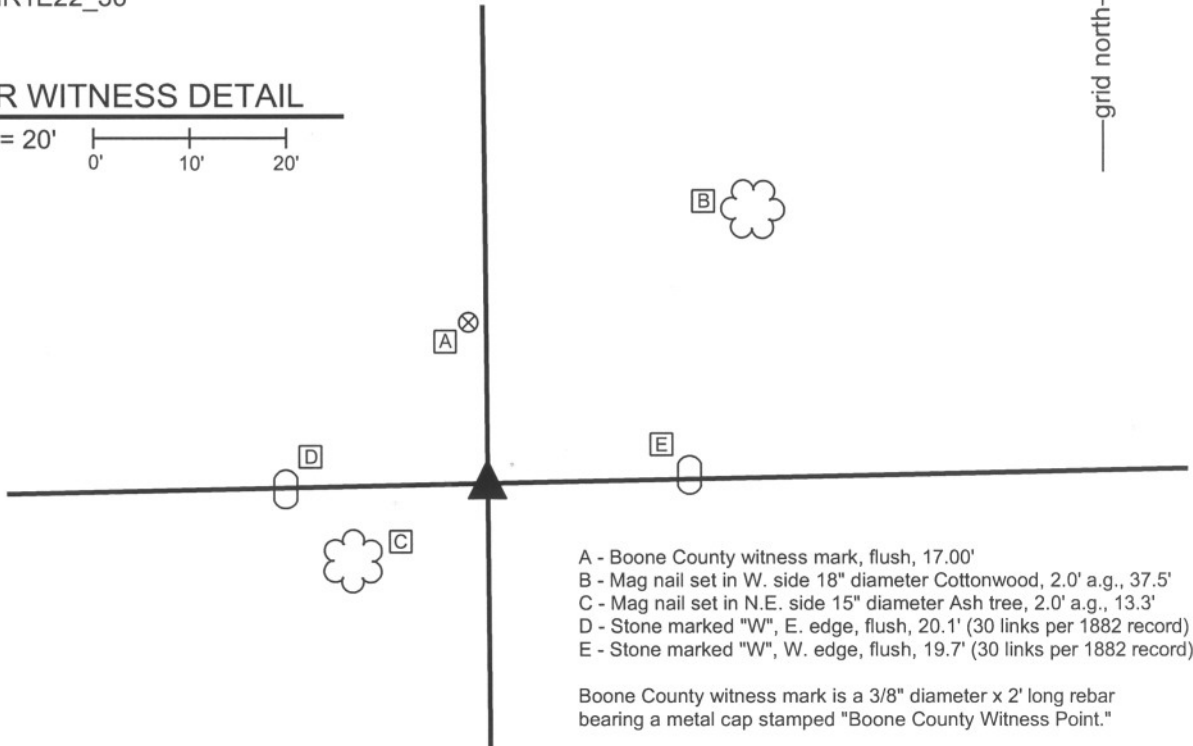
Type of monument: Harrison, 4" disk 'Section Corner'  
Depth: Two inches above adjoining grade

Indiana tie card references:  
IN02\_T18NR1E21\_44  
IN02\_T18NR1E22\_36



### CORNER WITNESS DETAIL

SCALE 1" = 20'  
0' 10' 20'



- A - Boone County witness mark, flush, 17.00'
- B - Mag nail set in W. side 18" diameter Cottonwood, 2.0' a.g., 37.5'
- C - Mag nail set in N.E. side 15" diameter Ash tree, 2.0' a.g., 13.3'
- D - Stone marked "W", E. edge, flush, 20.1' (30 links per 1882 record)
- E - Stone marked "W", W. edge, flush, 19.7' (30 links per 1882 record)

Boone County witness mark is a 3/8" diameter x 2' long rebar bearing a metal cap stamped "Boone County Witness Point."

The harrison monument was set in place of a rebar found and in the approximate reconstructed position of a former stone. A BCS record of April 6, 1882 states "stone set from Gov. wit. marked +. Stone Wit. marked W East 30 links. Stone Wit. marked W West 30 links." This corner was excavated on September 18, 2008. Prior to excavation a 5/8 inch diameter rebar was found at the north edge of an old wood corner post. The post was rotted off at the ground and was only standing by means of being suspended by fencing to the east, west and south. The top portion of the post was removed. Excavation revealed various rocks which appeared to be witness rocks. The stone marked "+" was not found, nor were any stones which appeared to be a section corner monument. However, both of the witness stones referenced in the 1882 record were found. Each one was underneath the east-west fencing, approximately flush with the surface of the ground, though buried under debris collected at the bottom of the fence. Each stone had a clearly defined "W" etched on the side. In both cases the etched "W" was on the side of the stone facing the corner. The position of the rebar had been approximately on line between the two witness stone and very close to the midpoint between them. Reconstructing the position of the record stone from the witness stones, it appears that the record stone was likely removed before or during installation of the wood corner post. The rebar, removed during excavation, had been approximately 0.2 foot east of the position reconstructed for the position of the stone from the witness stones. As the rebar was so close to the reconstructed position of the stone, and was present prior to excavation while the stone was not found, the position of the physical monument was held and the harrison monument was set in place of the rebar. This corner was originally established as a wood post in June, 1820.



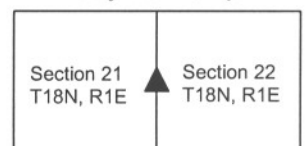
*Kenneth E. Hedge*  
Kenneth E. Hedge, County Surveyor

*James S. Swift*

James S. Swift, IN LS 20200054

July 14, 2010

Perry Township





# SECTION CORNER RECORD

SE 400-200

## BOONE COUNTY SURVEYOR'S OFFICE

State Plane grid coordinates NAD83 (NSRS 2007):

North: 1724680.57 East: 3135311.64 (U.S. survey feet)

Type of monument: Harrison, 4" disk 'Section Corner'

Depth: One inch below adjacent road surface

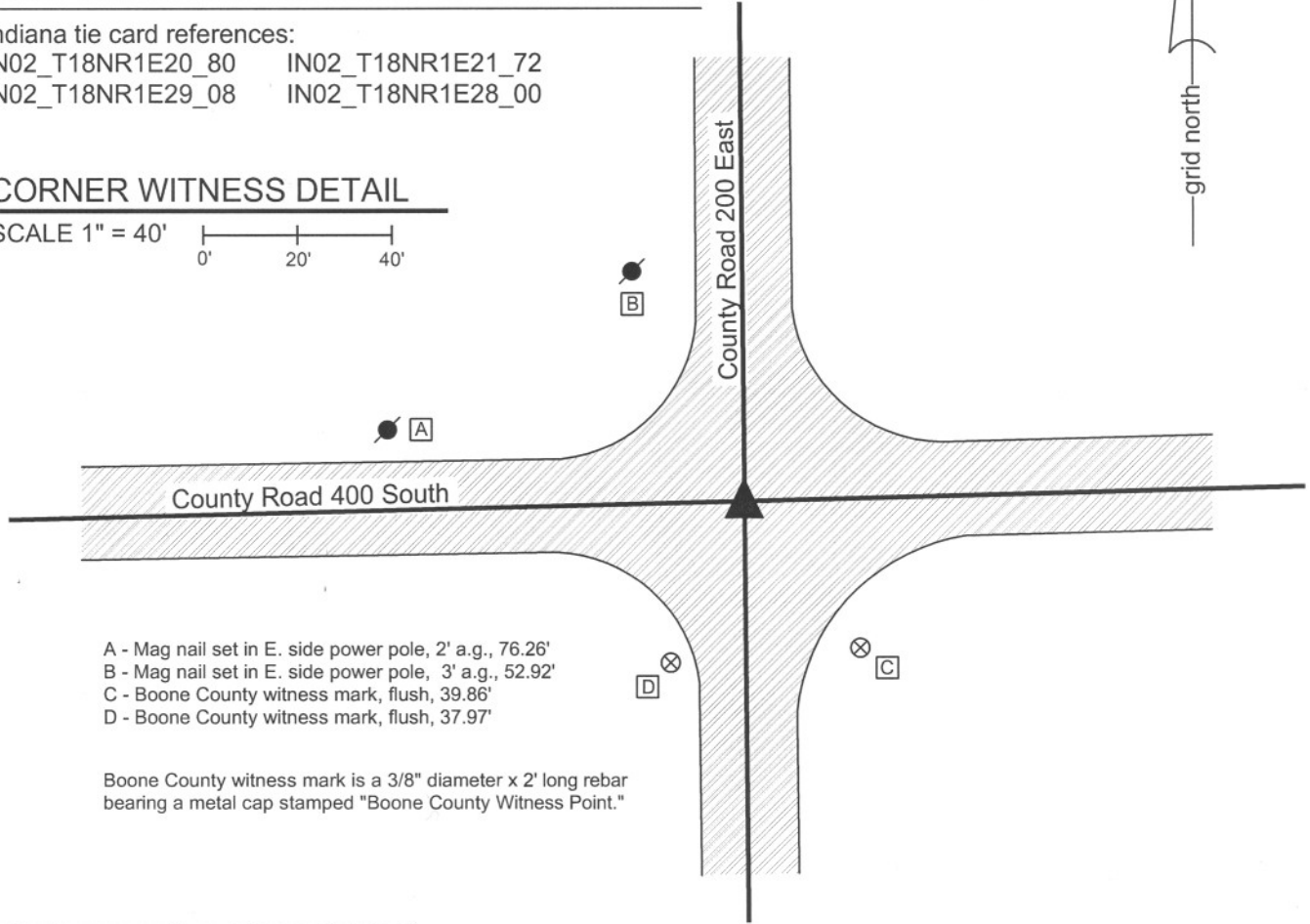
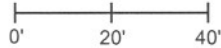
Indiana tie card references:

IN02\_T18NR1E20\_80 IN02\_T18NR1E21\_72

IN02\_T18NR1E29\_08 IN02\_T18NR1E28\_00

### CORNER WITNESS DETAIL

SCALE 1" = 40'



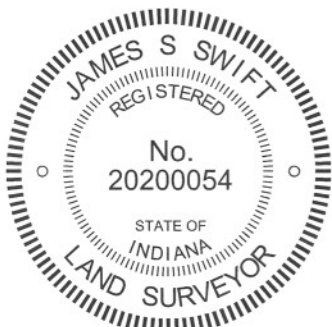
- A - Mag nail set in E. side power pole, 2' a.g., 76.26'
- B - Mag nail set in E. side power pole, 3' a.g., 52.92'
- C - Boone County witness mark, flush, 39.86'
- D - Boone County witness mark, flush, 37.97'

Boone County witness mark is a 3/8" diameter x 2' long rebar bearing a metal cap stamped "Boone County Witness Point."

The harrison monument was set over a stone found.

A BCS record of October 13 & 21, 1869 states "Reestablished from Beech. Rock 19.12.9 +." A BCS tie card dated July 21, 1968 states "no stone." This corner was excavated on November 2, 2009. Prior to excavation a Mag Nail was visible at the surface. Excavation revealed a railroad spike found at 2 inches deep, below the nail. Further excavation revealed a section of railroad rail on end at 10 inches deep, below the railroad spike. The 1968 tie card does not mention the establishment of a monument, but it is believed most likely that the railroad rail was set at the same time the tie card was made proclaiming "no stone." Further excavation revealed two small stones found at 15 inches deep. The record stone was found below the two small stones, at 20 inches deep. The stone is fully embedded in the clay layer below the road, with the top of the stone at the top of the clay. With the top six inches of the stone exposed, the stone measures 12 inches N-S by 9 inches E-W. An etched "+" is clearly visible on the west side of the stone, approximately 3 inches down from the top. The harrison monument was set over the top of the stone, in line with the etched "+". The Mag nail, railroad spike and railroad rail, all removed during excavation, were all 2.0 feet north and 0.75 feet east of the stone.

This corner was originally established as a wood post in 1820.



*Kenneth E. Hedge*  
 Kenneth E. Hedge, County Surveyor

*James S. Swift*  
 James S. Swift, IN LS 20200054  
 July 25, 2011

Perry Township

Section 20 T18N, R1E	Section 21 T18N, R1E
Section 29 T18N, R1E	Section 28 T18N, R1E

PHOTOGRAPHIC DOCUMENTATION  
Date of photography: December 14, 2009

View of the top two stones as first exposed.



View of the larger of the top two stones with the lower, record, stone visible below.



The stone described in the 1868 record from above and northwest.



The record stone from above and north. The two upper stones are visible on the pavement.



View of the top and west side of the record stone.



Same view as to the left, with the etched mark on the stone enhanced for ease of visual detection.



For details and documentation, refer to related sheet "Section Corner Record."

# SECTION CORNER RECORD

SE 400-250

## BOONE COUNTY SURVEYOR'S OFFICE

State Plane grid coordinates NAD83 (NSRS 2007):

North: 1724746.42 East: 3137978.38 (U.S. survey feet)

Type of monument: Harrison, 4" disk 'Section Corner'

Depth: One inch below adjacent road surface

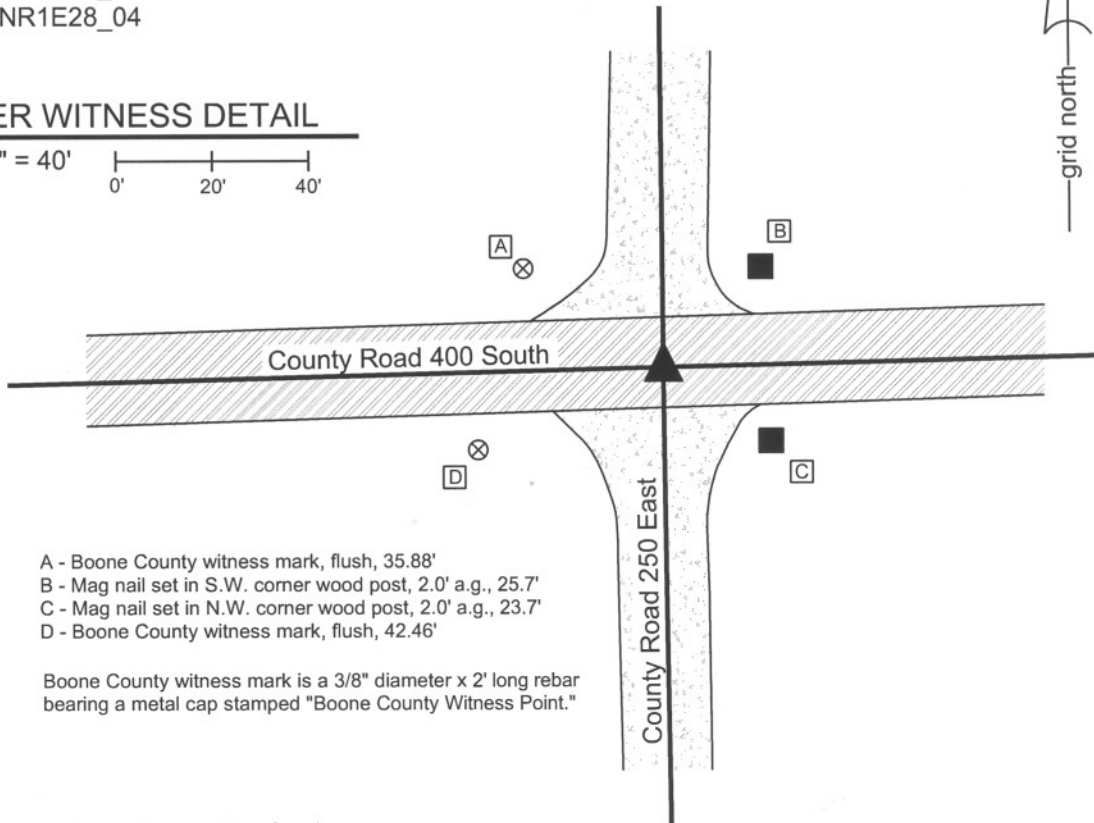
Indiana tie card references:

IN02\_T18NR1E21\_76

IN02\_T18NR1E28\_04

### CORNER WITNESS DETAIL

SCALE 1" = 40'



- A - Boone County witness mark, flush, 35.88'
- B - Mag nail set in S.W. corner wood post, 2.0' a.g., 25.7'
- C - Mag nail set in N.W. corner wood post, 2.0' a.g., 23.7'
- D - Boone County witness mark, flush, 42.46'

Boone County witness mark is a 3/8" diameter x 2' long rebar bearing a metal cap stamped "Boone County Witness Point."

The harrison monument was set over a stone found.

A BCS record of March 6, 1873 states "Reestablished from stump of Poplar and a stake. Set two Rocks One 14,10,9+ Top One 12,7,5+." No recent BCS tie cards were found referencing this corner. Excavation for this corner occurred on December 14, 2009. Prior to excavation a mag nail was visible in a hole in the asphalt 2 inches deep. No documentation was found for the source of this nail. The mag nail was removed and no other metal monuments were detected with a magnetic locator, nor were any ultimately found during excavation. A wood hub was found at 5 inches deep, approximately 4 inches north of the nail. Further excavation revealed a stone found at 17 inches below grade. The stone measured approximately 7 inches by 5 inches at the top and was 7 inches tall. The stone was situated in the base material of the road, was not embedded in the clay and did not match the record description in all dimensions. It was removed. Another stone was found directly below, at 24 inches deep. This stone measured 10 inches by 9 inches at the top and was also 7 inches tall. It was also removed. The record lower stone was found directly below this. This lower stone measures 9 inches E-W by 14 inches N-S at a point approximately 2 inches below the top of the stone. It is fully embedded in the clay layer below the road bed and a distinct etched "+" is visible on the top, center of the stone. The full height of the stone was not measured. This lower stone was left in place and the harrison monument was set directly over the etched "+" on the top. The mag nail had been 0.25 foot south and 0.4 foot east of this position.

This corner was originally established as a wood post in June, 1820.



*Kenneth E. Hedge*  
 Kenneth E. Hedge, County Surveyor

*James S. Swift*  
 James S. Swift, IN LS 20200054

July 14, 2010

Perry Twp

Section 21  
T18N, R1E

▲  
 Section 28  
 T18N, R1E

PHOTOGRAPHIC DOCUMENTATION

Date of photography: December 14, 2009

The first stone found.



The second stone found.



The lower, record, stone.



The lower, record, stone.



For details and documentation, refer to related sheet "Section Corner Record."

# SECTION CORNER RECORD

SE 400-300

## BOONE COUNTY SURVEYOR'S OFFICE

State Plane grid coordinates NAD83 (NSRS 2007):

North: 1724808.96 East: 3140643.24 (U.S. survey feet)

Type of monument: Harrison, 4" disk 'Section Corner'

Depth: 1 inch below adjacent road surface

Indiana tie card references:

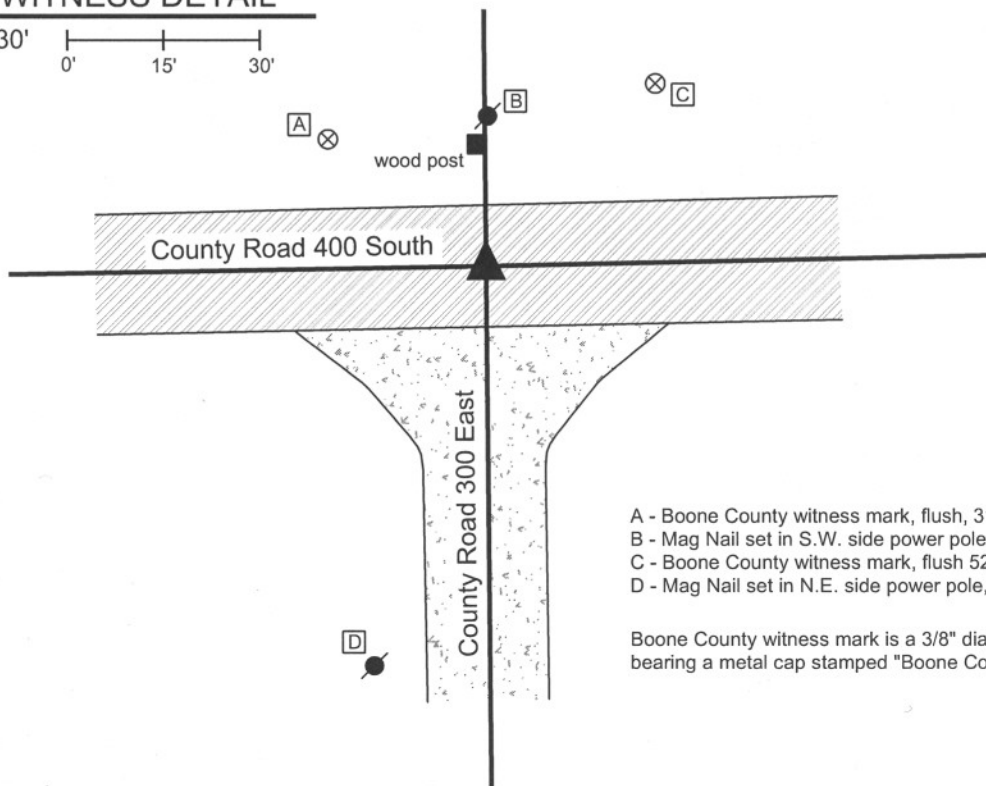
IN02\_T18NR1E21\_80 IN02\_T18NR1E22\_72

IN02\_T18NR1E27\_00 IN02\_T18NR1E28\_08

### CORNER WITNESS DETAIL

SCALE 1" = 30'

0' 15' 30'



- A - Boone County witness mark, flush, 31.77'
- B - Mag Nail set in S.W. side power pole, 2.0' a.g., 22.04'
- C - Boone County witness mark, flush 52.32'
- D - Mag Nail set in N.E. side power pole, 2.0' a.g., 63.68'

Boone County witness mark is a 3/8" diameter x 2' long rebar bearing a metal cap stamped "Boone County Witness Point."

The Harrison monument was set directly over the top, center of a stone found and accepted as marking the corner.

No BCS stone records or tie cards are known for this corner beyond the original establishment of the corner by federal surveyors.

This corner was excavated on May 16, 2008. Prior to excavation a mag nail was visible flush with the road surface at the approximate intersection of the two county roads. Excavation yielded an iron pipe below and slightly N.E. of the mag nail. Further excavation yielded a stone found at 24 inches. This stone measures 14 inches NW-SE and 10 inches NE-SW. The top 6 inches of the stone were exposed at which point the stone remained entirely stable in the clay, indicating that it protrudes deeper into the clay. The top 2 inches of the stone protrude into the gravel base at the bottom of the road. The Harrison was set directly over the top, center of the stone. The mag nail was 0.55 foot North and 1.25 foot West of the top, center of the stone and the pipe was 0.85 North and 1.1 foot West.

This corner was originally established as a wood post in June, 1820.



*Kenneth E. Hedge*  
Kenneth E. Hedge, County Surveyor

*James S. Swift*  
James S. Swift, IN LS 20200054  
March 11, 2009

Perry Township

Section 21 T18N, R1E	Section 22 T18N, R1E
Section 28 T18N, R1E	Section 27 T18N, R1E

PHOTOGRAPHIC DOCUMENTATION

Date of photography: May 16, 2008

Corner stone - overhead view from south.



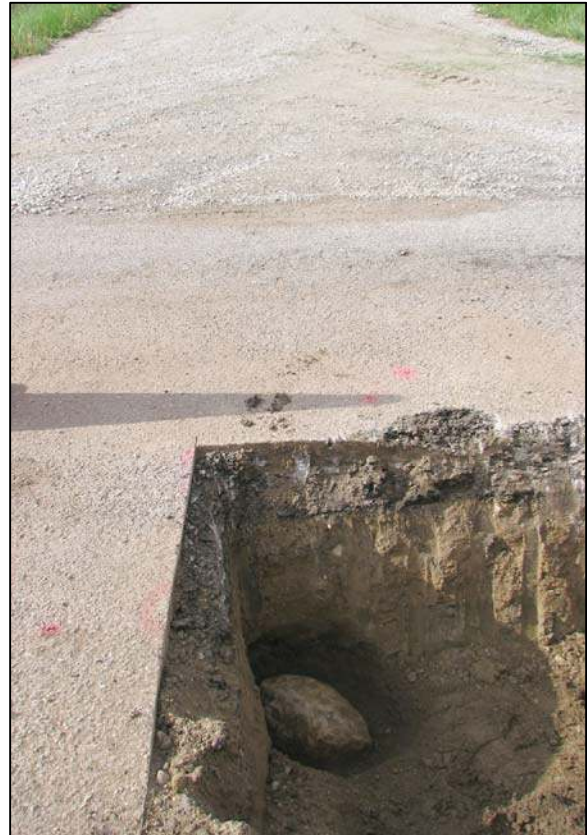
Corner stone - overhead view from west.



View from west, looking across corner stone and along County Road 400 South to the east.



View from north, looking across corner stone to north end of County Road 300 East to the south.



For details and documentation, refer to related sheet "Section Corner Record."