

SECTION CORNER RECORD

BOONE COUNTY SURVEYOR'S OFFICE

NW 800-1050

State Plane grid coordinates NAD83 (2011):
 North: 1788101.85 East: 3069191.76 (U.S. survey feet)

Type of monument: Harrison, 4" disk 'Section Corner'
 Depth: One inch below adjacent road surface

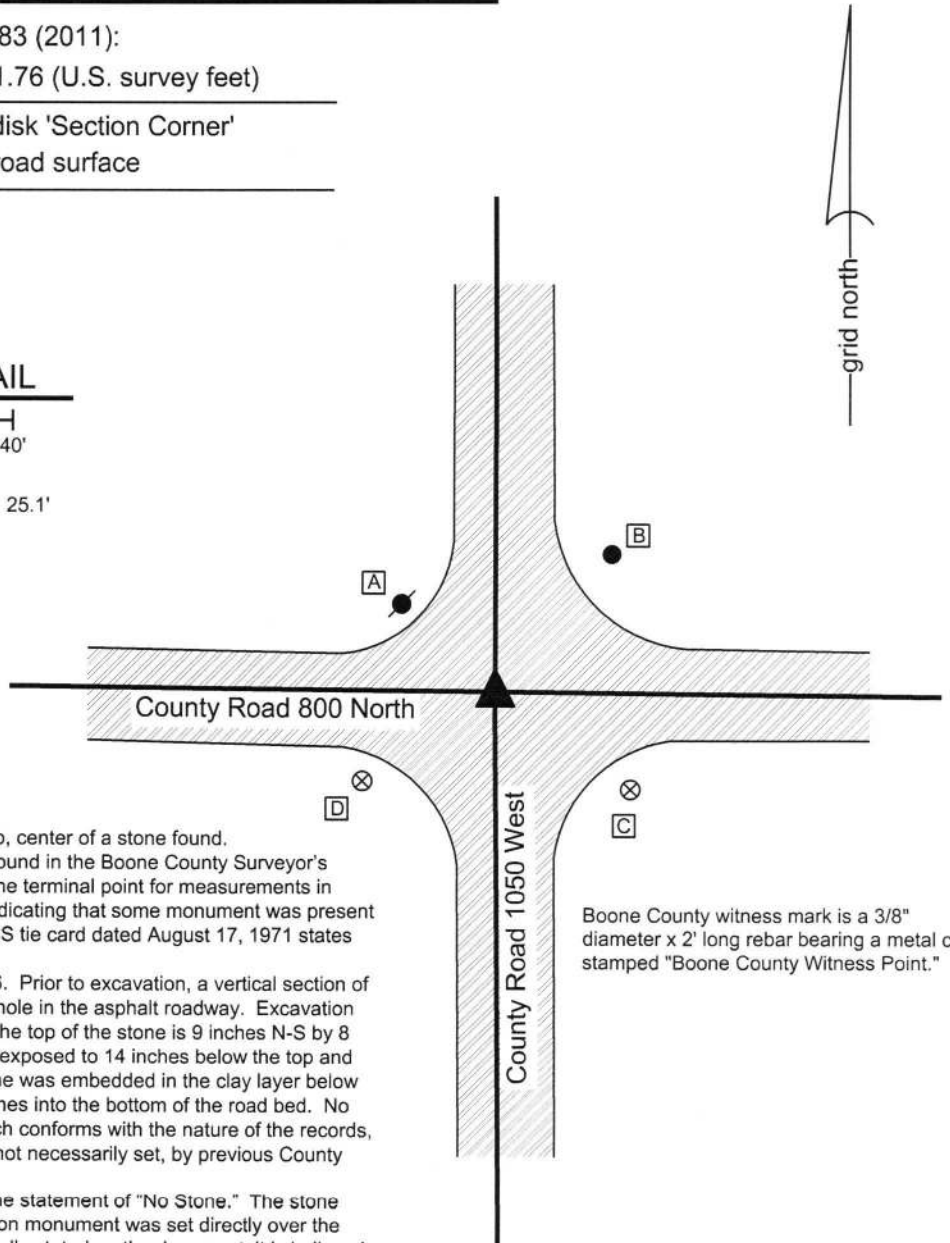
Indiana tie card references:

IN02_T20NR2W20_76
 IN02_T20NR2W29_04

CORNER WITNESS DETAIL

SCALE 1" = 40'

- A - Mag nail set in S. side power pole, 2' a.g., 25.1'
- B - 5/8 inch rebar found, flush, 37.7'
- C - Boone County Witness Mark, flush, 34.7'
- D - Boone County Witness Mark, flush, 33.1'

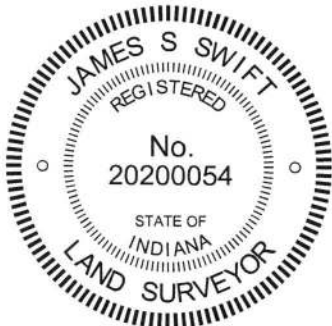


The Harrison monument was set over the top, center of a stone found. No specific descriptions of this corner were found in the Boone County Surveyor's Record, though the corner is referenced as the terminal point for measurements in entries dated 1834, 1839, 1867 and 1878, indicating that some monument was present from which to measure at those times. A BCS tie card dated August 17, 1971 states "No Stone - RRR put in."

This corner was excavated on June 27, 2016. Prior to excavation, a vertical section of railroad rail was found at 7 inches deep in a hole in the asphalt roadway. Excavation revealed a stone found at 17 inches deep. The top of the stone is 9 inches N-S by 8 inches E-W. The east side of the stone was exposed to 14 inches below the top and the stone appeared to be yet taller. The stone was embedded in the clay layer below the road bed, protruding approximately 5 inches into the bottom of the road bed. No specific marks were found on the stone, which conforms with the nature of the records, indicating that the stone was likely held, but not necessarily set, by previous County Surveyors.

The 1971 tie card was clearly erroneous in the statement of "No Stone." The stone was held as marking the corner and a Harrison monument was set directly over the top, center of the stone. Though not specifically stated on the document, it is believed that the railroad rail was set in association with the creation of the 1971 tie card. The rail, removed during excavation, had been 1.4 feet east and 0.6 foot south of the stone. This corner was originally established as a wood post in 1829.

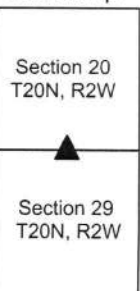
Boone County witness mark is a 3/8" diameter x 2' long rebar bearing a metal cap stamped "Boone County Witness Point."



Kenneth E. Hedge
 Kenneth E. Hedge, County Surveyor

James S. Swift
 James S. Swift, IN LS 20200054
 March 23, 2017

Sugar Creek Township



PHOTOGRAPHIC DOCUMENTATION

Date of photography: June 27, 2016

The stone as it was originally exposed.



View of the stone more fully exposed, showing the vertical east side of the rock.



View from the east, looking across the stone and west along C.R. 800 North.



View from the south, looking across the stone and north along C.R. 1050 West.



For details and documentation, refer to related sheet "Section Corner Record."

SECTION CORNER RECORD

BOONE COUNTY SURVEYOR'S OFFICE

NW 800-1100

State Plane grid coordinates NAD83 (2011):

North: 1788128.40 East: 3066534.22 (U.S. survey feet)

Type of monument: Harrison, 4" disk 'Section Corner'

Depth: One inch below adjacent road surface

Indiana tie card references:

IN02_T20NR2W19_80 IN02_T20NR2W20_72

IN02_T20NR2W30_08 IN02_T20NR2W29_00

CORNER WITNESS DETAIL

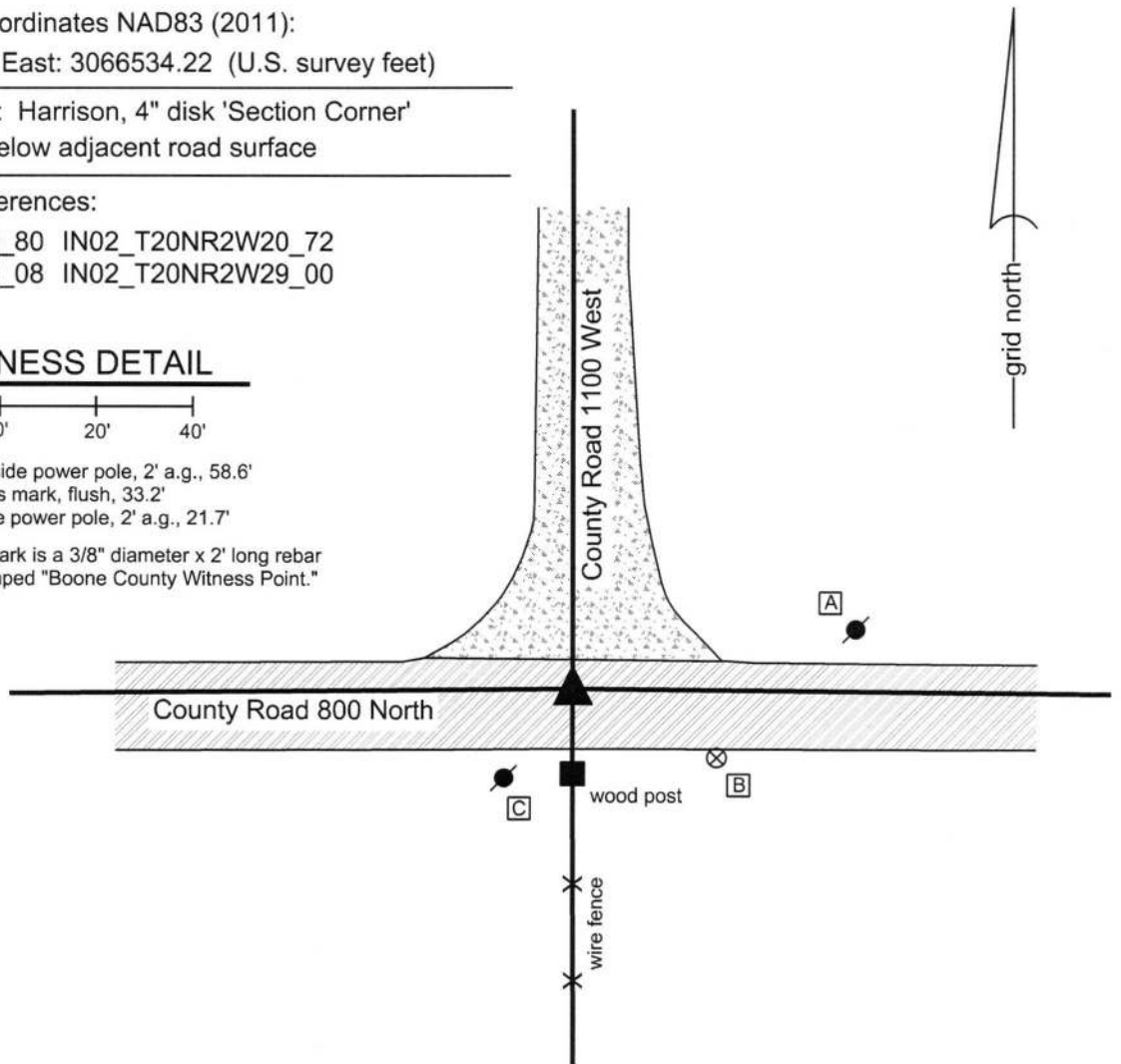
SCALE 1" = 40'

A - Mag nail set in S.W. side power pole, 2' a.g., 58.6'

B - Boone County witness mark, flush, 33.2'

C - Mag nail set in N. side power pole, 2' a.g., 21.7'

Boone County witness mark is a 3/8" diameter x 2' long rebar bearing a metal cap stamped "Boone County Witness Point."



The Harrison monument was set over a stone found.

A BCS record dated October 21, 1867 states, with respect to this corner, "A Stone that was placed." A BCS tie card dated August 16, 1971 states "No Stone - RRR put in."

This corner was excavated on June 15, 2016. Prior to excavation, a Mag nail was found at 3 inches deep in a hole in the asphalt roadway.

Excavation revealed a vertical section of railroad rail found at 5 inches deep, slightly north and east of the Mag nail. Further excavation revealed a stone found at 17 inches, several feet north of the nail and rail. With the top 6 inches of the stone exposed, it measured 8.5 inches E-W by 6 inches N-S. The south side of the stone was exposed to its bottom, 10 inches below the top of the stone. The south side is vertical and flat while the north side is more sloping. The stone had a distinct ridge across the top oriented in the E-W direction. No specific marks were found on the stone. The stone was held as marking the corner and a Harrison monument was set over the center of the E-W ridge. The Mag nail and railroad rail, removed during excavation, had been 3.0 feet south and 0.5 foot west of the stone.

This corner was originally established as a wood post in 1829.



Kenneth E. Hedge
Kenneth E. Hedge, County Surveyor

James S. Swift
James S. Swift, IN LS 20200054
March 23, 2017

Sugar Creek Twp

Section 19 T20N, R2W	Section 20 T20N, R2W
Section 30 T20N, R2W	Section 29 T20N, R2W

PHOTOGRAPHIC DOCUMENTATION

Date of photography: June 15, 2016

The stone as it was originally exposed, circled in red.



View showing the exposed, vertical south edge of the stone.



View from the south, looking across the stone and north along County Road 1100 West.



View from the north, looking across the stone and along the existing fence to the south.



For details and documentation, refer to related sheet "Section Corner Record."

SECTION CORNER RECORD

NW 850-1000

BOONE COUNTY SURVEYOR'S OFFICE

State Plane grid coordinates NAD83 (2011):

North: 1790738.09 East: 3071849.42 (U.S. survey feet)

Type of monument: Harrison, 4" disk 'Section Corner'

Depth: Flush with adjacent ground

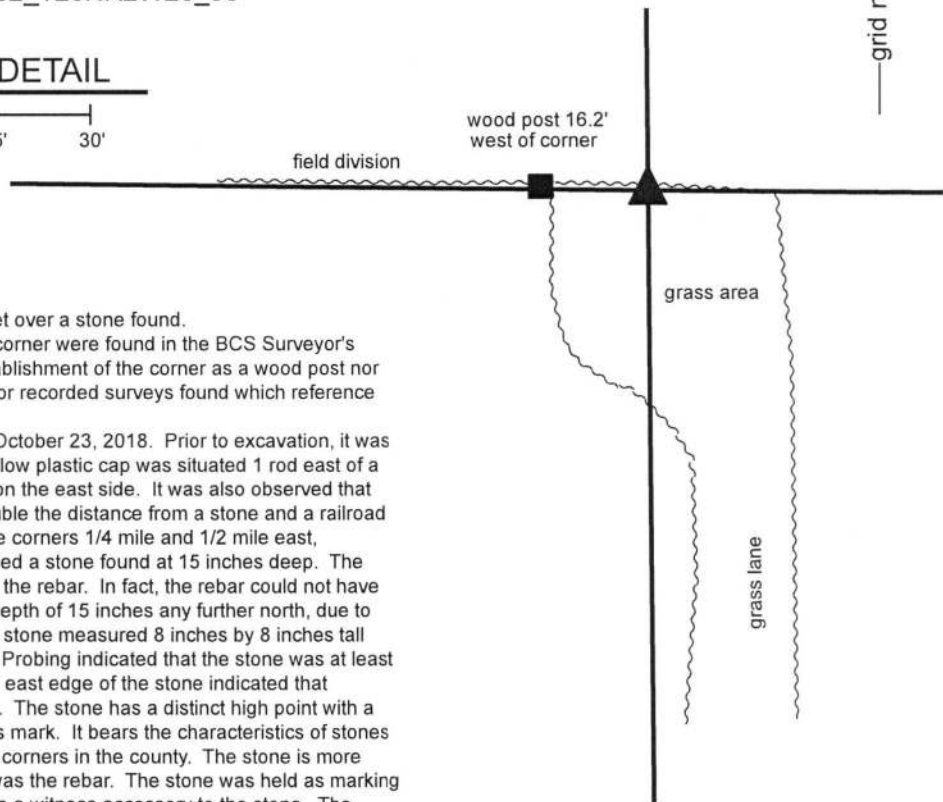
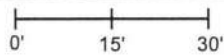
Indiana tie card references:

IN02_T20NR2W20_4 IN02_T20NR2W20_36



CORNER WITNESS DETAIL

SCALE 1" = 30'



The Harrison monument was set over a stone found.

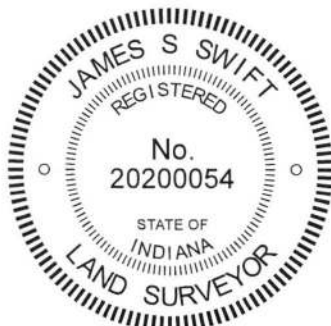
No specific descriptions of this corner were found in the BCS Surveyor's Record beyond the original establishment of the corner as a wood post nor were any recent BCS tie cards or recorded surveys found which reference the corner.

This corner was excavated on October 23, 2018. Prior to excavation, it was observed that a rebar with a yellow plastic cap was situated 1 rod east of a wood post with gate hardware on the east side. It was also observed that this rebar was very close to double the distance from a stone and a railroad spike providing evidence of the corners 1/4 mile and 1/2 mile east, respectively. Excavation revealed a stone found at 15 inches deep. The stone was immediately north of the rebar. In fact, the rebar could not have been driven beyond a depth of 15 inches any further north, due to the presence of the stone. The stone measured 8 inches by 8 inches tall with the top 4 inches exposed. Probing indicated that the stone was at least 8 inches tall. Probing along the east edge of the stone indicated that another stone is situated below. The stone has a distinct high point with a single etched mark but no cross mark. It bears the characteristics of stones found marking numerous other corners in the county. The stone is more in-line with the gate post than was the rebar. The stone was held as marking the corner and the rebar held as a witness accessory to the stone. The rebar was driven deeper along the side of the stone. Additional rebar was driven around the stone, the top 4 inches of the stone were encased in concrete, and a Harrison Monument was set directly over the high point of the stone. It is noted that the position of the corner fits well with the local evidence in the form of the gate post 1 rod west and the east edge of a grass lane approximately 1 rod east.

Prior to being driven deeper and incorporated into the overall monument, the rebar with yellow cap had been flush and 0.4 foot south of the position of the final monument. A stone was also found at the surface of the ground approximately 6 feet west of the corner. This stone did not fit the characteristics of a purposely set corner stone and is not considered evidence of the corner.

This corner was originally established as a wood post in 1829.

This Harrison monument is situated at the edge of a grass area to the south, 16.2 feet east of a wood post. The monument is approximately flush with the ground and witnessed by an orange fiberglass lathe stamped 'Survey Marker.' No other appropriate objects are available to provide distance ties.

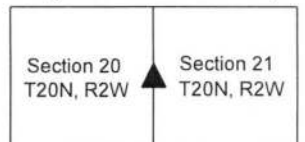


Kenneth E. Hedge
Kenneth E. Hedge, County Surveyor

James S. Swift
James S. Swift, IN LS 20200054

November 7, 2018

Sugar Creek Township



SECTION CORNER RECORD

NW 850-1100

BOONE COUNTY SURVEYOR'S OFFICE

State Plane grid coordinates NAD83 (2011):

North: 1790802.31 East: 3066537.70 (U.S. survey feet)

Type of monument: Harrison, 4" disk 'Section Corner'


Depth: four inches below adjacent gravel road surface

Indiana tie card references:

IN02_T20NR2W19_44 IN02_T20NR2W20_36

CORNER WITNESS DETAIL

SCALE 1" = 50'



A - Mag nail set in S.E. side power pole, 2' a.g., 195.1'

B - Boone County witness mark, flush, 33.0'

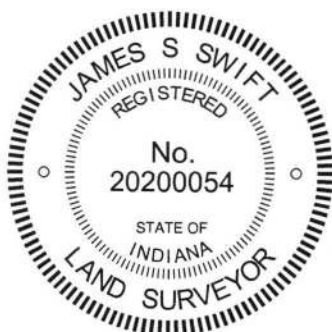
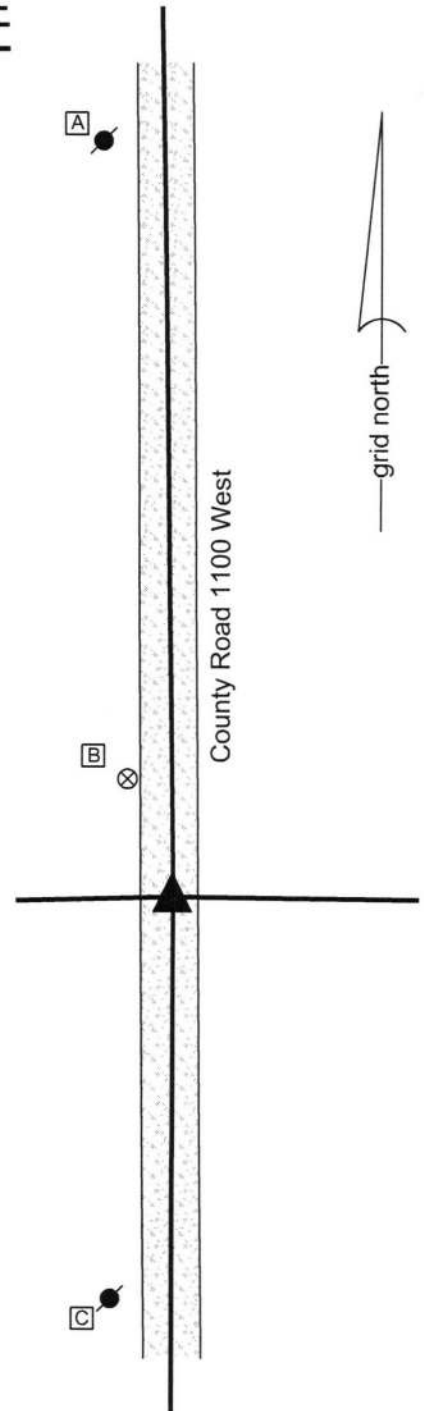
C - Mag nail set in N. side power pole, 2' a.g., 104.0'

Boone County witness mark is a 3/8" diameter x 2' long rebar bearing a metal cap stamped "Boone County Witness Point."

The Harrison monument was set in place of a stone found. No specific descriptions of this corner were found in the BCS Surveyor's Record. However, several entries were found which reference this corner as the terminal point for measurements. Prior to excavation, no metal or other artificial monuments were found marking the ostensible location of the corner, nor was local evidence found indicating the likely position of the corner in the north-south dimension. The existing roadway of County Road 1100 West did provide evidence of the east-west position of the corner. A probable position was estimated for the corner with respect to measurements from records of 1867 and 1916 and with respect to the relative positions of the stones found marking the adjacent corners to the north and south. The 1867 measurements were scaled to match known variations of reported measurements from that specific era versus modern field measurements. The 1916 measurements were not scaled, as measurements from that era have been found to match modern field measurements. The calculated, probable position had minimal uncertainty in the north-south dimension.

The corner was excavated on June 21, 2016. Excavation yielded a stone found at 3 inches deep in the gravel road within one foot of the estimated position. The stone was removed, measured, and found to have been 22 inches tall by 14 inches E-W by 18 inches N-S. As found, the stone was embedded in the clay layer below the road, protruding approximately 5 inches into the bottom of the road bed. The stone was approximately vertical. No specific marks were observed on the stone. The top of the stone was approximately 10 inches E-W by 8 inches N-S. The top center of the stone, as originally found, was held as the position of the corner and a Harrison monument was set in that position.

This corner was originally established as a wood post in 1829.




Kenneth E. Hedge, County Surveyor


James S. Swift, IN LS 20200054

March 23, 2017

Sugar Creek Township

Section 19 T20N, R2W	Section 20 T20N, R2W
-------------------------	-------------------------

PHOTOGRAPHIC DOCUMENTATION

Date of photography: June 21, 2016

The stone as it was originally exposed.



The stone more fully exposed.



The stone as it is being removed from the road bed.



For details and documentation, refer to related sheet "Section Corner Record."

SECTION CORNER RECORD

NW 900-1000

BOONE COUNTY SURVEYOR'S OFFICE

State Plane grid coordinates NAD83 (2011):

North: 1793409.26 East: 3071827.77 (U.S. survey feet)

Type of monument: Harrison, 4" disk 'Section Corner'

Depth: Four inches below adjacent gravel road surface

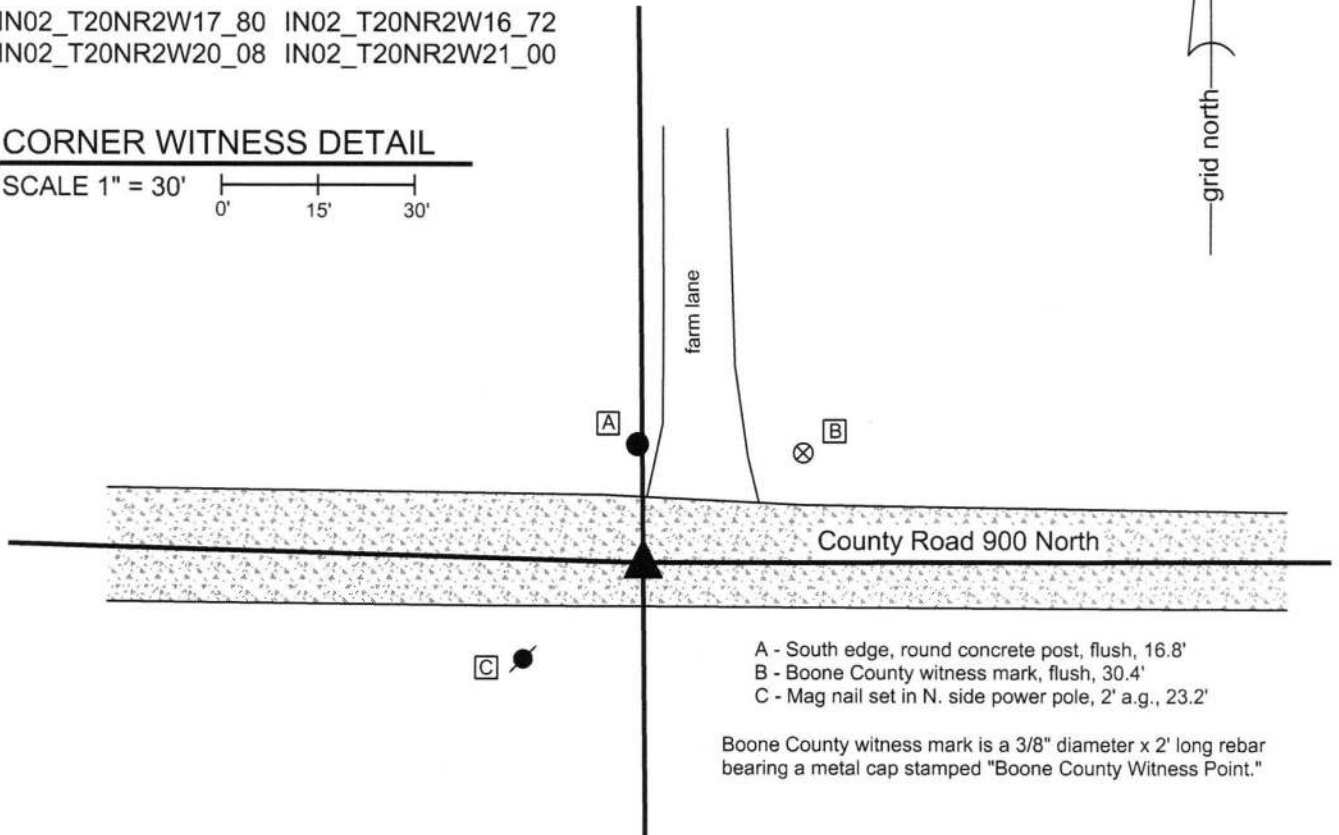
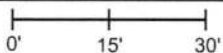
Indiana tie card references:

IN02_T20NR2W17_80 IN02_T20NR2W16_72

IN02_T20NR2W20_08 IN02_T20NR2W21_00

CORNER WITNESS DETAIL

SCALE 1" = 30'



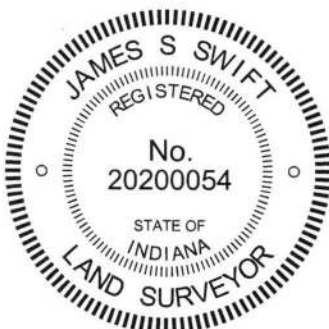
- A - South edge, round concrete post, flush, 16.8'
- B - Boone County witness mark, flush, 30.4'
- C - Mag nail set in N. side power pole, 2' a.g., 23.2'

Boone County witness mark is a 3/8" diameter x 2' long rebar bearing a metal cap stamped "Boone County Witness Point."


The Harrison monument was set over a stone found.

No specific descriptions of this corner were found in the BCS Surveyor's Record, though the corner is referenced as the terminal point for measurements of 1839, 1858, and 1877, indicating that on those occasions some monument was present from which to measure. No recent BCS tie cards were found referencing this corner.

Excavation was performed at this corner on June 24, 2016. Prior to excavation no metal or other artificial monuments were found prior to excavation. Substantial local evidence of the corner was found in the form of the east-west county road and a concrete post on the north side of the road, in-line with a field division and edge of farm lane to the north. It is noted that this position fit well with respect to relative positions of evidence found which indicates the respective locations of the corners one-half and one-quarter mile in both the east and west directions. Excavation at the probable position, based on the found evidence, revealed a stone found at 14 inches deep in the gravel road. With the top 9 inches of the stone exposed, it measured 9 inches E-W by 10 inches N-S and was clearly larger, particularly in the vertical dimension. The stone was fully embedded in the clay layer below the road with the top of the stone at the bottom of the road bed. The north side of the stone was flat and vertical with the high point of the stone being at the north edge of the top. No specific marks were found on the stone. The stone was held as marking the corner. The top 9 inches of the stone were embedded in concrete and a Harrison monument was set directly over the top, high point, near the north edge of the stone. This corner was originally established as a wood post in 1829.




Kenneth E. Hedge, County Surveyor


James S. Swift, IN LS 20200054
March 23, 2017

Sugar Creek Township

Section 17 T20N, R2W	Section 16 T20N, R2W
Section 20 T20N, R2W	Section 21 T20N, R2W

PHOTOGRAPHIC DOCUMENTATION

Date of photography: June 24, 2016

The stone as it was originally exposed, view from above.



The stone more fully exposed, view from above and north.



The stone as viewed from west.



View from east, looking across the stone and west along County Road 900 North.



View from above the stone, looking north toward the concrete post on the north side of County Road 900 North.



For details and documentation, refer to related sheet "Section Corner Record."

SECTION CORNER RECORD

BOONE COUNTY SURVEYOR'S OFFICE

NW 900-1050

State Plane grid coordinates NAD83 (2011):
 North: 1793486.46 East: 3069162.60 (U.S. survey feet)

Type of monument: Harrison, 4" disk 'Section Corner'
 Depth: One inch below adjacent road surface

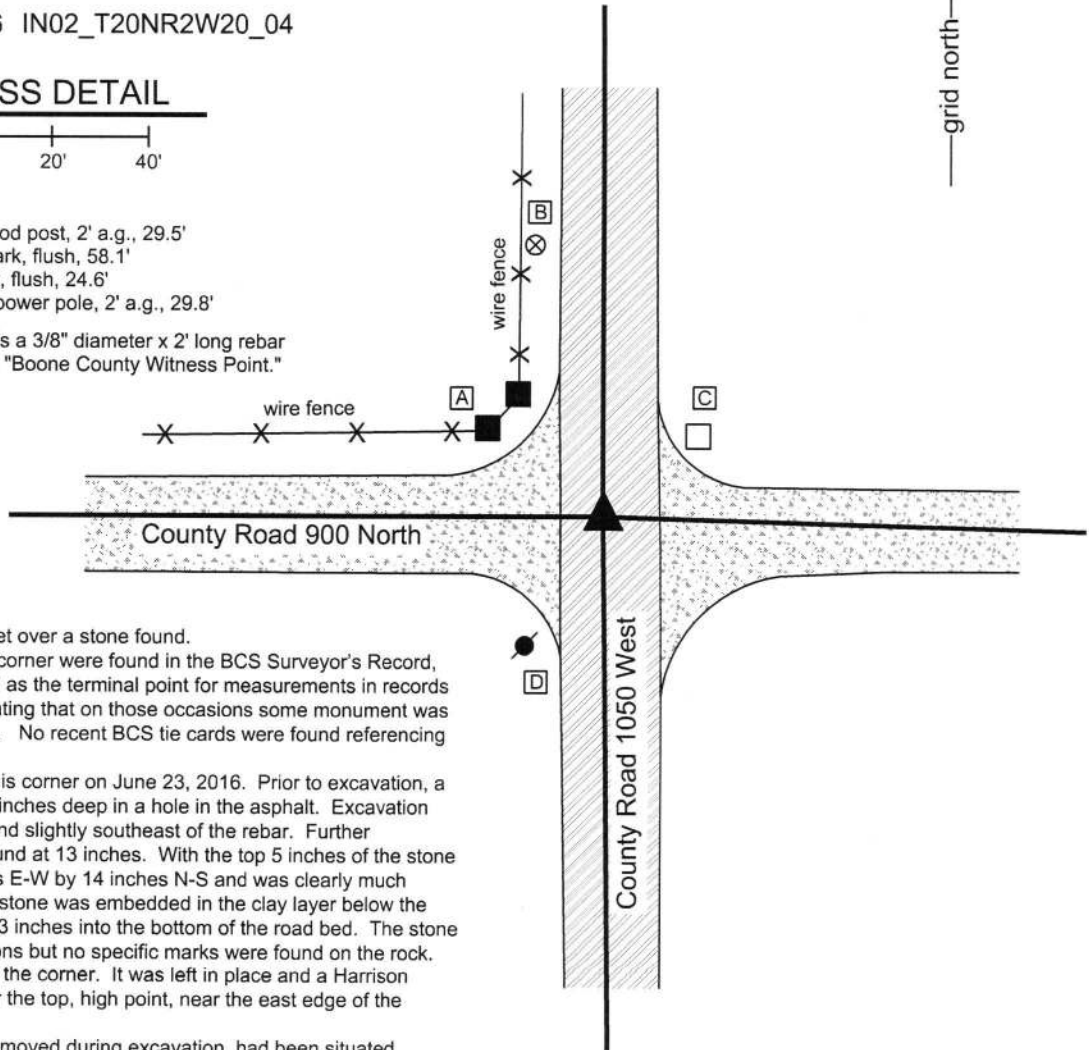
Indiana tie card references:
 IN02_T20NR2W17_76 IN02_T20NR2W20_04

CORNER WITNESS DETAIL

SCALE 1" = 40'

- A - Mag nail set in E. side wood post, 2' a.g., 29.5'
- B - Boone County witness mark, flush, 58.1'
- C - West edge, concrete post, flush, 24.6'
- D - Mag nail set in N.E. side power pole, 2' a.g., 29.8'

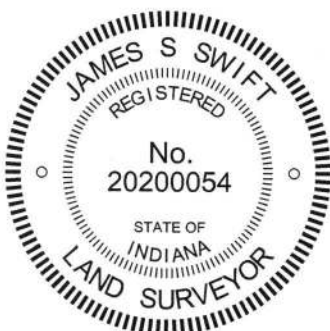
Boone County witness mark is a 3/8" diameter x 2' long rebar bearing a metal cap stamped "Boone County Witness Point."



The Harrison monument was set over a stone found. No specific descriptions of this corner were found in the BCS Surveyor's Record, though the corner is referenced as the terminal point for measurements in records of 1854, 1877, and 1893, indicating that on those occasions some monument was present from which to measure. No recent BCS tie cards were found referencing this corner.

Excavation was performed at this corner on June 23, 2016. Prior to excavation, a railroad spike was found at 1.5 inches deep in a hole in the asphalt. Excavation revealed a rebar found below and slightly southeast of the rebar. Further excavation revealed a stone found at 13 inches. With the top 5 inches of the stone exposed, it measured 11 inches E-W by 14 inches N-S and was clearly much larger yet in all directions. The stone was embedded in the clay layer below the road, protruding approximately 3 inches into the bottom of the road bed. The stone was oriented in cardinal directions but no specific marks were found on the rock. The stone was held as marking the corner. It was left in place and a Harrison monument was set directly over the top, high point, near the east edge of the stone.

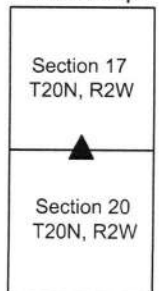
The railroad spike and rebar, removed during excavation, had been situated generally over the stone, approximately 0.3 foot west of the high point of the stone. This corner was originally established as a wood post in 1829.



Kenneth E. Hedge
 Kenneth E. Hedge, County Surveyor

James S. Swift
 James S. Swift, IN LS 20200054
 October 11, 2007

Sugar Creek Township



PHOTOGRAPHIC DOCUMENTATION

Date of photography: June 23, 2016

The stone as it was originally exposed, view from above and west.



The stone more fully exposed, view from above and north.



View from north, looking across the stone and south along County Road 1050 West.



View from west, looking across the stone and east along County Road 900 North.



For details and documentation, refer to related sheet "Section Corner Record."

SECTION CORNER RECORD

BOONE COUNTY SURVEYOR'S OFFICE

NW 900-1100

State Plane grid coordinates NAD83 (2011):

North: 1793486.98 East: 3066498.97 (U.S. survey feet)

Type of monument: Harrison, 4" disk 'Section Corner'

Depth: Six inches below adjacent gravel road surface

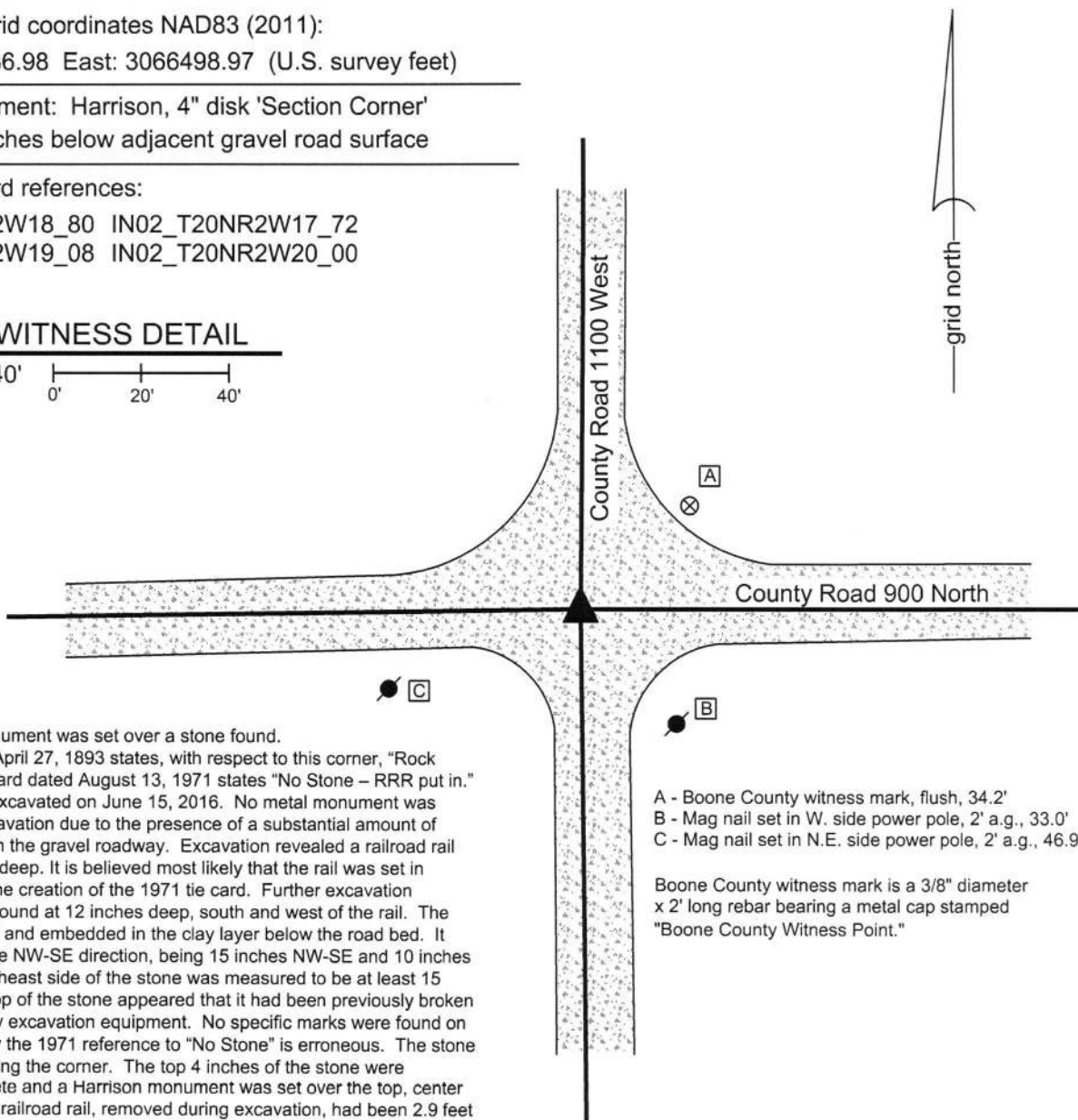
Indiana tie card references:

IN02_T20NR2W18_80 IN02_T20NR2W17_72

IN02_T20NR2W19_08 IN02_T20NR2W20_00

CORNER WITNESS DETAIL

SCALE 1" = 40'



The Harrison monument was set over a stone found.

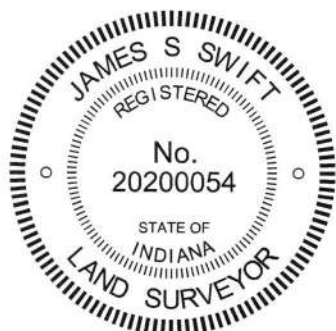
A BCS record of April 27, 1893 states, with respect to this corner, "Rock Set." A BCS tie card dated August 13, 1971 states "No Stone - RRR put in."

This corner was excavated on June 15, 2016. No metal monument was found prior to excavation due to the presence of a substantial amount of metallic material in the gravel roadway. Excavation revealed a railroad rail found at 7 inches deep. It is believed most likely that the rail was set in association with the creation of the 1971 tie card. Further excavation revealed a stone found at 12 inches deep, south and west of the rail. The stone was vertical and embedded in the clay layer below the road bed. It was oriented in the NW-SE direction, being 15 inches NW-SE and 10 inches NE-SW. The northeast side of the stone was measured to be at least 15 inches tall. The top of the stone appeared that it had been previously broken off, presumably by excavation equipment. No specific marks were found on the stone. Clearly the 1971 reference to "No Stone" is erroneous. The stone was held as marking the corner. The top 4 inches of the stone were encased in concrete and a Harrison monument was set over the top, center of the stone. The railroad rail, removed during excavation, had been 2.9 feet east and 0.9 foot north of the stone.

This corner was originally established as a wood post in 1829.

- A - Boone County witness mark, flush, 34.2'
- B - Mag nail set in W. side power pole, 2' a.g., 33.0'
- C - Mag nail set in N.E. side power pole, 2' a.g., 46.9'

Boone County witness mark is a 3/8" diameter x 2' long rebar bearing a metal cap stamped "Boone County Witness Point."



Kenneth E. Hedge
 Kenneth E. Hedge, County Surveyor

James S. Swift
 James S. Swift, IN LS 20200054
 March 23, 2017

Sugar Creek Township

Section 18 T20N, R2W	Section 17 T20N, R2W
Section 19 T20N, R2W	Section 20 T20N, R2W

PHOTOGRAPHIC DOCUMENTATION

Date of photography: June 15, 2016

The stone partially exposed, view from above and north.



The stone partially exposed, view from above.



View from east, looking across the stone and west along County Road 900 North.



View from north, looking across the stone and south along County Road 1100 West.



For details and documentation, refer to related sheet "Section Corner Record."