

# SECTION CORNER RECORD

NE 800-750

## BOONE COUNTY SURVEYOR'S OFFICE

State Plane grid coordinates NAD83 (2011):

North: 1788814.91 East: 3163935.10 (U.S. survey feet)

Type of monument: Harrison, 4" disk 'Section Corner'

Depth: Ten inches above adjacent ground. (Flush with ground to N&E)

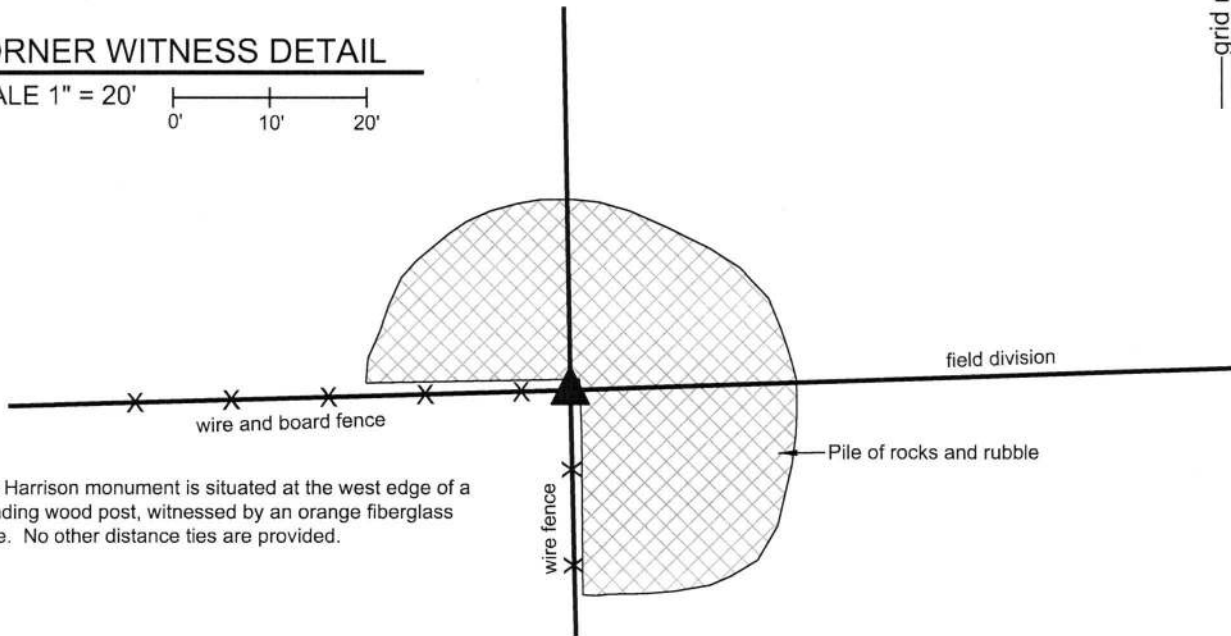
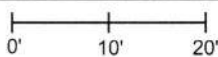
Indiana tie card references:

IN02\_T20NR2E20\_76 IN02\_T20NR2E29\_04



### CORNER WITNESS DETAIL

SCALE 1" = 20'

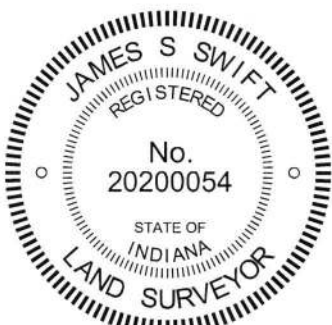


The Harrison monument is situated at the west edge of a standing wood post, witnessed by an orange fiberglass lathe. No other distance ties are provided.

The Harrison Monument was set over fragments of a cedar post found.

A BCS record of January 21-23, 1869 states, with respect to this corner, "Reestablished from Beech. Set two rocks. One 11.8.5 1/2 marked +. Top rock 12.11.6 1/2 marked +." No recent BCS tie cards were found referencing this corner.

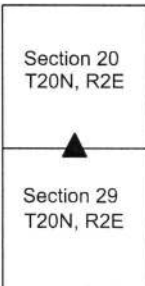
Excavation was performed at this corner on March 2, 2018. A wood corner post was found at the intersection of fences to the south and west, in-line with a field division to the east. It is clearly evident that the ground around the post has been substantially disturbed in recent times. A pile of various rocks and rubble is situated to the north and east of the corner. Extensive probing and manual excavation around the post revealed several small rocks, broken pieces of tile and other various rubble. The ground / pile of rubble to the north and east is of higher elevation than the ground to the southwest of the post. Excavation at the southwest edge of the standing post revealed fragments of an older cedar post found at 18 inches deep. The stones described in the 1869 record were not found. While the ground southwest of the post was being excavated, various trash was found, including the casing of a modern shotgun shell found at 2 feet deep, well below the elevation of the surrounding ground. The presence of modern material at such a depth was accepted as confirmation that the area has been substantially disturbed relatively recently. The fragments of the cedar post appear to be generally in line with the standing fence to the south. The fragments of cedar post were accepted as the best available evidence of the corner. A Harrison monument was set over the older post, at the WSW edge of the standing post.



*Kenneth E. Hedge*  
Kenneth E. Hedge, County Surveyor

*James S. Swift*  
James S. Swift, IN LS 20200054  
March 7, 2018

Marion Township



# SECTION CORNER RECORD

NE 800-800

## BOONE COUNTY SURVEYOR'S OFFICE

State Plane grid coordinates NAD83 (CORS96):

North: 1788903.10 East: 3166578.27 (U.S. survey feet)

Type of monument: Harrison, 4" disk 'Section Corner'

Depth: six inches below adjacent gravel road surface

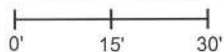
Indiana tie card references:

IN02\_T20NR2E20\_80 IN02\_T20NR2E21\_72

IN02\_T20NR2E29\_08 IN02\_T20NR2E28\_00

### CORNER WITNESS DETAIL

SCALE 1" = 30'



- A - Boone County witness mark, flush, 71.35'
- B - Mag nail set in E. side power pole, 2' a.g., 29.97'
- C - N.W. corner, concrete block garage, 30.17'
- D - S.W. corner, concrete block garage, 38.26'

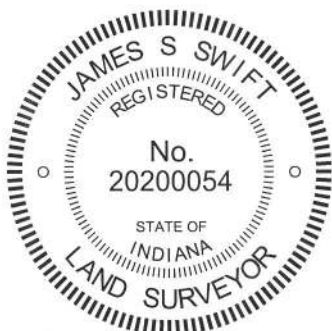
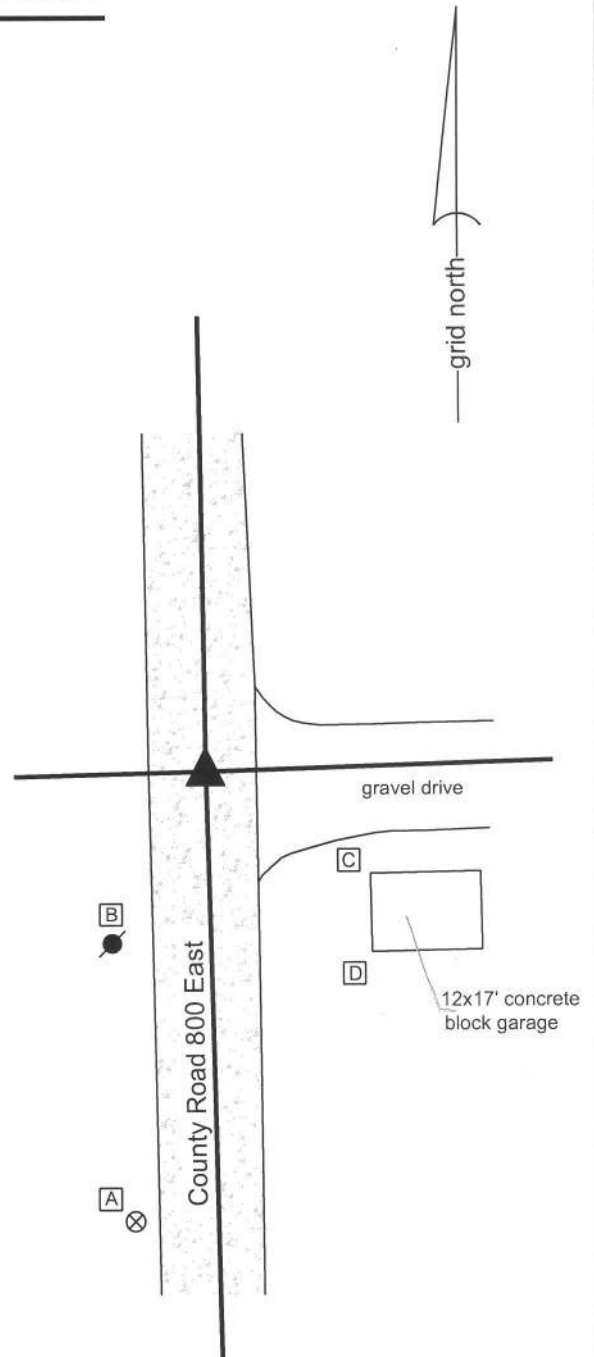
Boone County witness mark is a 3/8" diameter x 2' long rebar bearing a metal cap stamped "Boone County Witness Point."

The harrison monument was set over a stone found.

A BCS record of February 16, 1869 states "reestablished from trees (both green) Set two rocks one 17.13 by 5 in (+) Top One 19.17 by 13 in +." A BCS tie card dated August 23, 1974 states "wood stake found."

This corner was excavated on July 26, 2013. Prior to excavation, a railroad spike was found at 1 inch deep in the gravel road. Excavation revealed a stone found at 12 inches deep. The stone was embedded in the clay layer below the road, with the top of the stone at the bottom of the road bed. The stone is of an odd, triangular shape and specific N-S/E-W dimensions were difficult to positively identify. The top 7 inches of the stone were exposed, at which point the stone appeared to be approximately 14 inches N-S by 12 inches E-W. Using a probe, another stone was detected below at 13 inches from the top of the top stone. An etched "+" mark was clearly visible at the top of the stone, near the high point of the stone. The stone was accepted as marking the corner. Two rebars being 3/8 inch diameter x 2 feet long were driven at an angle near the northwest and southwest sides of the triangular shaped stone. The top 5 inches of the stone and the top of the rebars were all encased in concrete and a harrison monument (4 inch spacer with a lid) was set over the etched + mark on the stone. The railroad spike, removed during excavation, had been 0.3 foot south and 0.4 foot east.

This corner was originally established as a wood post in 1821.



*Kenneth E. Hedge*  
 Kenneth E. Hedge, County Surveyor

*James S. Swift*  
 James S. Swift, IN LS 20200054  
 February 5, 2015

Marion Township

Section 20 T20N, R2E	Section 21 T20N, R2E
Section 29 T20N, R2E	Section 28 T20N, R2E

PHOTOGRAPHIC DOCUMENTATION

Date of photography: July 26, 2013

View of the top, east side of the stone with the etched mark exposed.



View of the top, east side of the stone, washed.



View of the stone as first exposed and the post on the west side of the road.



View from the north, looking across the stone and south along County Road 800 East.



For details and documentation, refer to related sheet "Section Corner Record."

# SECTION CORNER RECORD

## BOONE COUNTY SURVEYOR'S OFFICE

NE 850-700

State Plane grid coordinates NAD83 (CORS96):

North: 1791386.79 East: 3161232.85 (U.S. survey feet)

Type of monument: Harrison, 4" disk 'Section Corner'

Depth: One inch below adjacent road surface

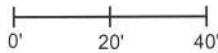
Indiana tie card references:

IN02\_T20NR2E19\_44

IN02\_T20NR2E20\_36

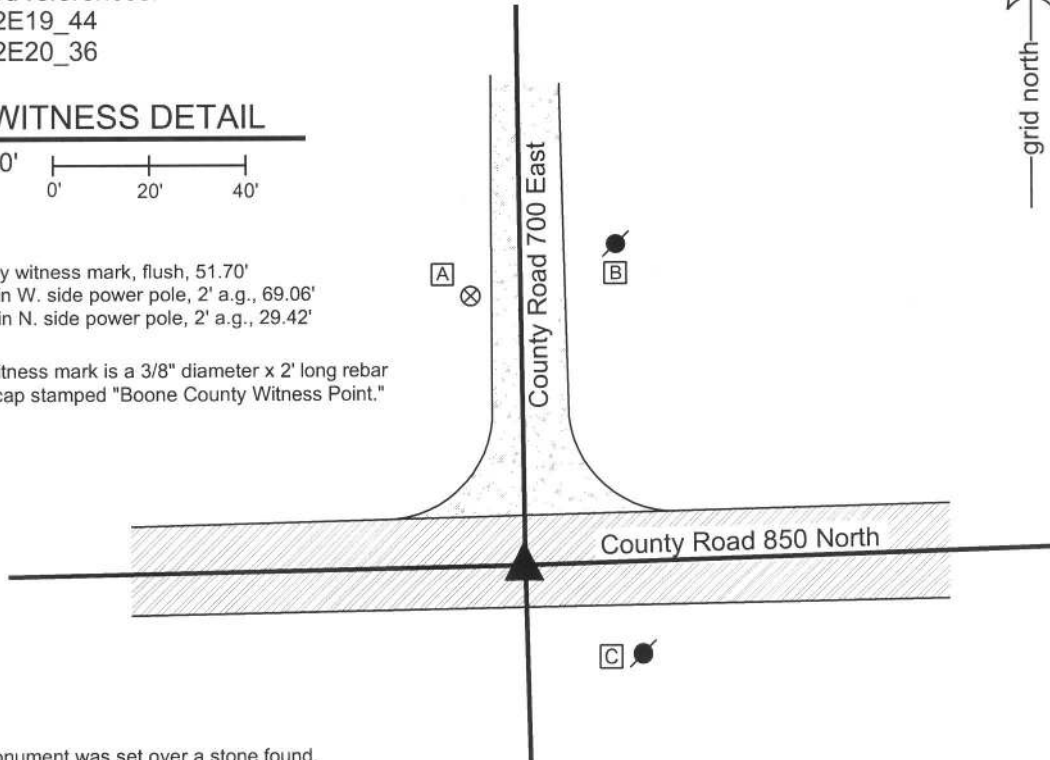
### CORNER WITNESS DETAIL

SCALE 1" = 40'



- A - Boone County witness mark, flush, 51.70'
- B - Mag nail set in W. side power pole, 2' a.g., 69.06'
- C - Mag nail set in N. side power pole, 2' a.g., 29.42'

Boone County witness mark is a 3/8" diameter x 2' long rebar bearing a metal cap stamped "Boone County Witness Point."

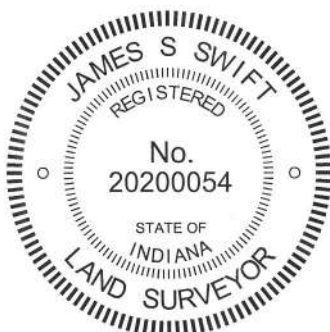


The Harrison monument was set over a stone found.

A BCS record of January 22, 1869 states "Found from Sugar (blown out by the roots but is here yet) drove no stake." A BCS tie card dated July 1975 states "Stone Found 14 inches deep."

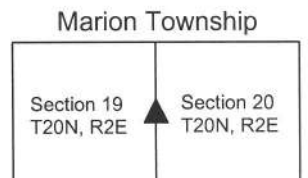
This corner was excavated on July 30, 2013. Prior to excavation, a 1/2 inch diameter rebar was found at 8 inches deep in a hole in the asphalt roadway. Excavation revealed a stone found at 14 inches deep, west of the rebar. With the top 9 inches of the stone exposed, it measured 9 inches E-W by 6 inches N-S and was clearly yet larger in the vertical dimension. The stone was embedded in the clay layer below the road, protruding approximately 2 inches into the bottom of the road bed. No specific marks were found on the stone. The stone appeared to be stable and undisturbed. Nothing beside road bed material and clay was found below the rebar, which was removed during excavation and measured to be 14 inches tall. It is noted that BCS field crews from 1968 to 1974 generally followed a procedure of stating "stone" if a stone was found, then removing it and replacing it with another monument, typically a section of railroad rail or 1/2 inch rebar, with no specific mention of that action. The crew working in 1975 (Kent and Joe) were more descriptive in their records, stating such phrases as "stone found - set rod." The fact that they only state that the stone was found is interpreted, for this particular field crew, as meaning they found it and left it place. Given that the found stone fits the characteristics of other stones found marking corners throughout the county and was found at the depth called for in the 1975 record and fits with local evidence, being at the center of the intersection of the two roads, and appeared to be undisturbed, the stone was held as marking the corner. A Harrison monument was set over the top, center of the stone. The rebar, removed during excavation, had been 1.2 feet east and 0.4 foot north of this point. The source of the rebar is not known.

This corner was originally established as a wood post in 1821.



*Kenneth E. Hedge*  
 Kenneth E. Hedge, County Surveyor

*James S. Swift*  
 James S. Swift, IN LS 20200054  
 February 5, 2015



PHOTOGRAPHIC DOCUMENTATION

Date of photography: July 30, 2013

View of the stone as first exposed.



View from above and south showing the stone exposed and the position of the rebar (marked by the plumb-bob).



View from the south, looking across the stone and north along County Road 700 East.



View from the east, looking across the stone and west along County Road 850 North.



For details and documentation, refer to related sheet "Section Corner Record."

# SECTION CORNER RECORD

NE 850-800

## BOONE COUNTY SURVEYOR'S OFFICE

State Plane grid coordinates NAD83 (CORS96):

North: 1791551.49 East: 3166533.92 (U.S. survey feet)

Type of monument: Harrison, 4" disk 'Section Corner'

Depth: One inch below adjacent road surface

Indiana tie card references:

IN02\_T20NR2E20\_44

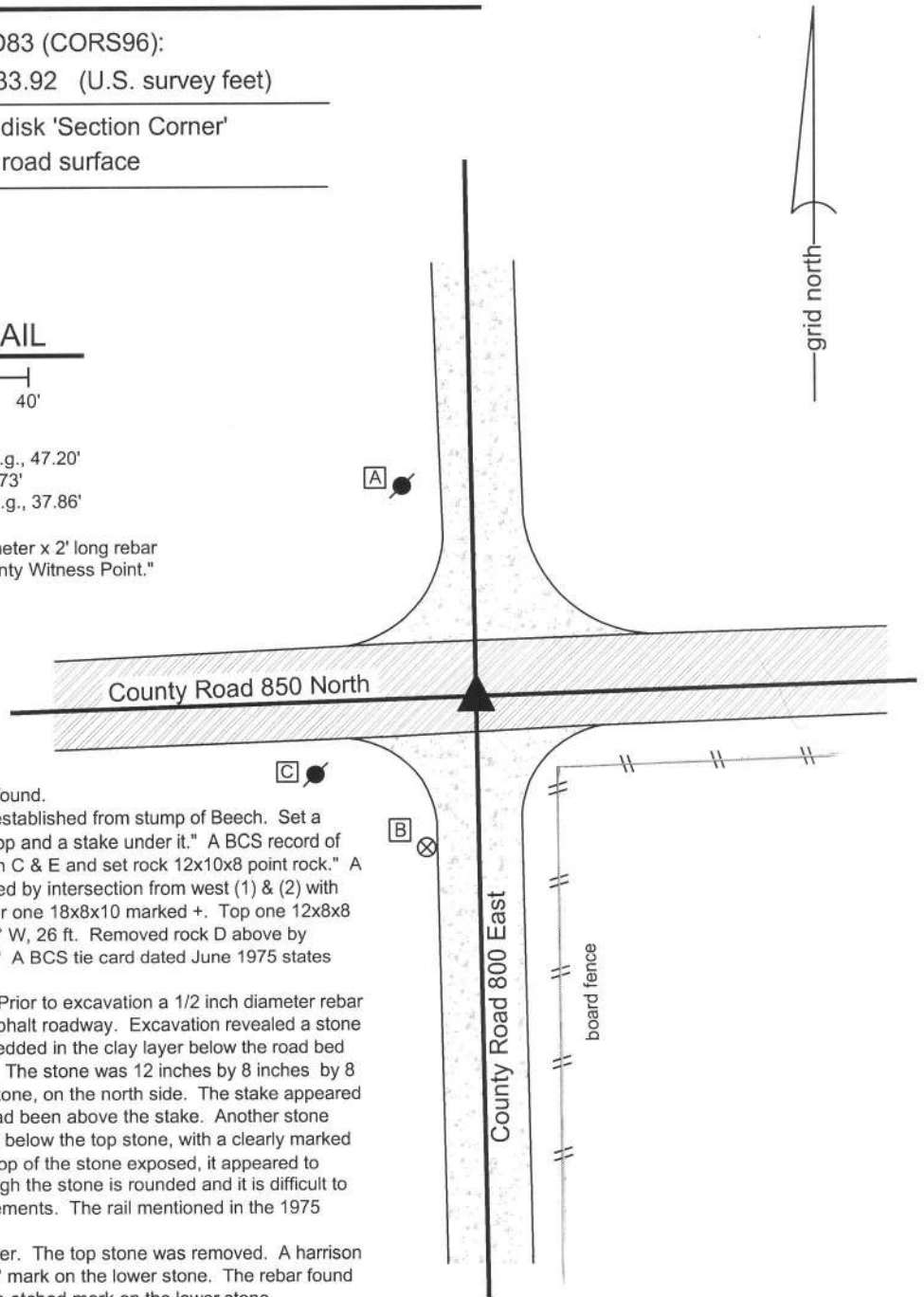
IN02\_T20NR2E21\_36

### CORNER WITNESS DETAIL

SCALE 1" = 40'  
0' 20' 40'

- A - Mag nail set in S. side power pole, 2' a.g., 47.20'
- B - Boone County witness mark, flush, 34.73'
- C - Mag nail set in E. side power pole, 2' a.g., 37.86'

Boone County witness mark is a 3/8" diameter x 2' long rebar bearing a metal cap stamped "Boone County Witness Point."



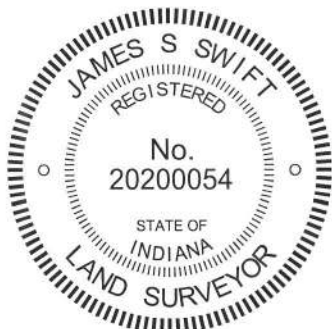
The Harrison monument was set over a stone found.

A BCS record of January 22, 1869 states "Reestablished from stump of Beech. Set a Rock 14.10 by 5 in marked + with a notch on top and a stake under it." A BCS record of January 1, 1908 states "Established in line with C & E and set rock 12x10x8 point rock." A BCS record of April 13, 1908 states "Established by intersection from west (1) & (2) with north and south line; and set two rocks; Under one 18x8x10 marked +. Top one 12x8x8 pointed but unmarked. W. rock 14x12x8 N 52° W, 26 ft. Removed rock D above by consent of interested parties, 30 inches north." A BCS tie card dated June 1975 states "found oak stake 28" deep set rail."

This corner was excavated on July 26, 2013. Prior to excavation a 1/2 inch diameter rebar was found at 2 inches deep in a hole in the asphalt roadway. Excavation revealed a stone found at 18 inches deep. The stone was embedded in the clay layer below the road bed with the top of the stone at the top of the clay. The stone was 12 inches by 8 inches by 8 inches. A wood stake was found next to the stone, on the north side. The stake appeared to be more modern than ancient. The rebar had been above the stake. Another stone was found at approximately 26 inches, directly below the top stone, with a clearly marked etched "+" mark on top. With 4 inches of the top of the stone exposed, it appeared to measure 12 inches E-W by 8 inches N-S, though the stone is rounded and it is difficult to precisely determine cardinal direction measurements. The rail mentioned in the 1975 record was not found.

The two stones were held as marking the corner. The top stone was removed. A Harrison monument was set directly over the etched "+" mark on the lower stone. The rebar found prior to excavation had been 1 foot north of the etched mark on the lower stone.

This corner was originally established as a wood post in 1821.



*Kenneth E. Hedge*  
Kenneth E. Hedge, County Surveyor

*James S. Swift*  
James S. Swift, IN LS 20200054  
February 5, 2015

Marion Township

Section 20 T20N, R2E	▲	Section 21 T20N, R2E
-------------------------	---	-------------------------

PHOTOGRAPHIC DOCUMENTATION

Date of photography: July 26, 2013

View of the upper stone as first exposed along with the wooden stake.



View of the lower stone showing the etched mark on the top.



View from the south, looking across the upper stone and north along C.R. 800 East.



View from the east, looking across the upper stone and west along C.R. 850 North.



For details and documentation, refer to related sheet "Section Corner Record."

# SECTION CORNER RECORD

## BOONE COUNTY SURVEYOR'S OFFICE

NE 900-700

State Plane grid coordinates NAD83 (CORS96):

North: 1794038.31 East: 3161197.33 (U.S. survey feet)

Type of monument: Harrison, 4" disk 'Section Corner'

Depth: six inches below adjacent gravel road surface

Indiana tie card references:

IN02\_T20NR2E18\_80      IN02\_T20NR2E17\_72

IN02\_T20NR2E19\_08      IN02\_T20NR2E20\_00

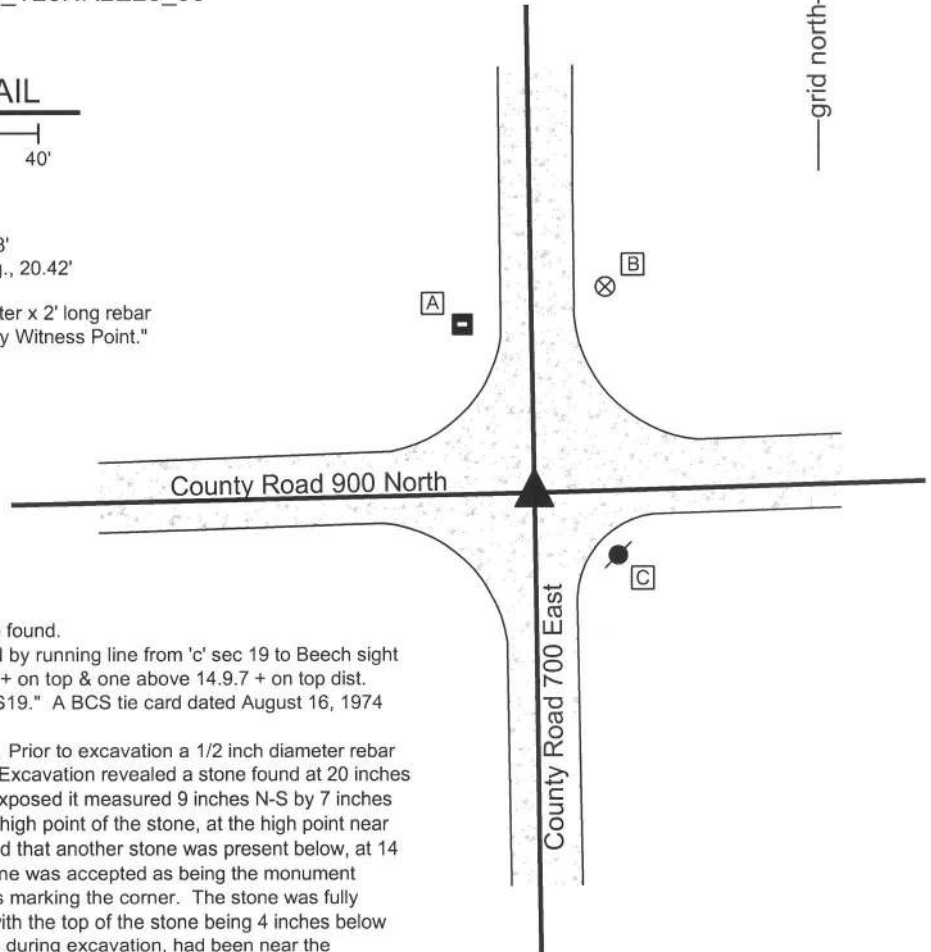


### CORNER WITNESS DETAIL

SCALE 1" = 40'

- A - East edge, metal stop sign post, 37.56'
- B - Boone County witness mark, flush, 45.38'
- C - Mag nail set in N. side power pole, 2' a.g., 20.42'

Boone County witness mark is a 3/8" diameter x 2' long rebar bearing a metal cap stamped "Boone County Witness Point."



The harrison monument was set over a stone found.

A BCS record of April 28, 1883 states "Found by running line from 'c' sec 19 to Beech sight tree north (distance 49.20) Set Rock 6.11.13 + on top & one above 14.9.7 + on top dist. 29.13 south of sight tree & 20.07 north of 'c' S19." A BCS tie card dated August 16, 1974 states "no stone found."

This corner was excavated on July 30, 2013. Prior to excavation a 1/2 inch diameter rebar was found at the surface of the gravel road. Excavation revealed a stone found at 20 inches deep. With 6 inches of the top of the stone exposed it measured 9 inches N-S by 7 inches E-W. A vague chisel mark was visible at the high point of the stone, at the high point near the north edge of the stone. Probing indicated that another stone was present below, at 14 inches from the top of the top stone. The stone was accepted as being the monument described in the 1883 record and was held as marking the corner. The stone was fully embedded in the clay layer below the road, with the top of the stone being 4 inches below the top of the clay layer. The rebar, removed during excavation, had been near the southwest edge of the stone, being 0.5 foot south and 0.6 foot west of the etched mark on the high point. The stone was left in place and a harrison monument was set directly over the etched + mark.

This corner was originally established as a wood post in 1821.



*Kenneth E. Hedge*  
 Kenneth E. Hedge, County Surveyor

*James S. Swift*  
 James S. Swift, IN LS 20200054  
 February 5, 2015

Marion Township

Section 18 T20N, R2E	Section 17 T20N, R2E
Section 19 T20N, R2E	Section 20 T20N, R2E



PHOTOGRAPHIC DOCUMENTATION

Date of photography: July 30, 2013

View of the stone as first exposed.  
View from above and west.



View from above, showing the etched "+" mark on the top of the stone.



View from above the stone, looking west along County Road 900 North.



View from the north, looking across the stone and south along County Road 700 East.



For details and documentation, refer to related sheet "Section Corner Record."

# SECTION CORNER RECORD

NE 900-750

## BOONE COUNTY SURVEYOR'S OFFICE

State Plane grid coordinates NAD83 (CORS96):

North: 1794116.82 East: 3163843.60 (U.S. survey feet)

Type of monument: Harrison, 4" disk 'Section Corner'

Depth: six inches below adjacent gravel road surface

Indiana tie card references:

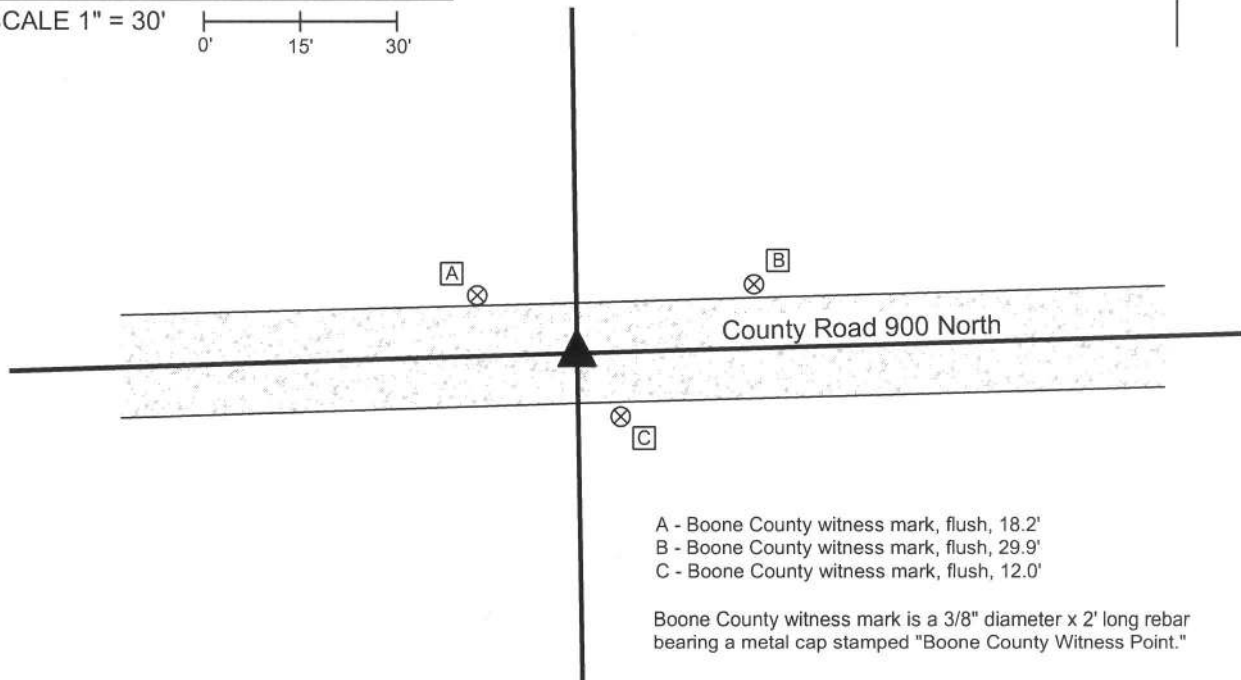
IN02\_T20NR2E17\_76

IN02\_T20NR2E20\_04



### CORNER WITNESS DETAIL

SCALE 1" = 30'



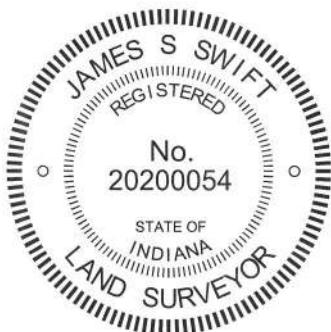
- A - Boone County witness mark, flush, 18.2'
- B - Boone County witness mark, flush, 29.9'
- C - Boone County witness mark, flush, 12.0'

Boone County witness mark is a 3/8" diameter x 2' long rebar bearing a metal cap stamped "Boone County Witness Point."

The harrison monument was set over a stone found.

A BCS record of April 28, 1883 states "Est 39.86 1/2 from E & G. Set Rock 14.7.7 +." A BCS tie card dated August 11, 1974 states "no stone found." This corner was excavated on September 11, 2013. Prior to excavation a 5/8 inch diameter rebar was found at 3 inches below the surface of the gravel road. Excavation revealed a stone found at 5 inches deep, north and west of the rebar. The stone was removed, measured and found to be 13 inches tall by 7 inches N-S by 8 inches E-W. The stone had been embedded in the clay layer below the road bed, protruding approximately 2 inches into the base of the road. The top of the stone appeared to have been hit repeatedly by road grading equipment and it was not clear whether marks found on the top of the stone were purposely etched or just damage from the grader blade. The stone was accepted as being the monument described in the 1883 record. The stone was removed and replaced in the same position with a harrison monument. The rebar, removed during excavation, was 5/8 inch diameter, 30 inches long and appeared to have been set more recently than 1974. The rebar had been 1.8 feet south and 2.1 feet east of the stone. The 1883 record states that this corner was set at equal distance from the southeast and southwest corners of section 17. The stone, as found is approximately 0.5 of a foot from being at equal distance to the stones found at those corners.

This corner was originally established as a wood post in 1821.



Kenneth E. Hedge, County Surveyor

James S. Swift, IN LS 20200054  
February 5, 2015



PHOTOGRAPHIC DOCUMENTATION

Date of photography: September 11, 2013

View of the stone as first exposed.



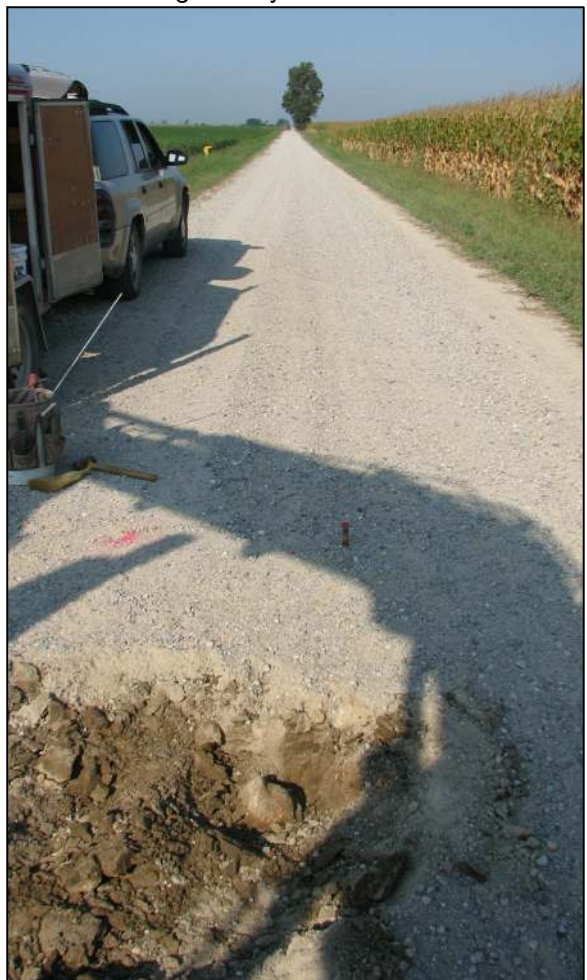
The stone removed from the road.



The stone removed from the road.



View from the east, looking across the stone and west along County Road 900 North.



The stone removed from the road.



For details and documentation, refer to related sheet "Section Corner Record."

# SECTION CORNER RECORD

NE 900-800

## BOONE COUNTY SURVEYOR'S OFFICE

State Plane grid coordinates NAD83 (CORS96):

North: 1794194.48 East: 3166488.82 (U.S. survey feet)

Type of monument: Harrison, 4" disk 'Section Corner'

Depth: six inches below adjacent gravel road surface

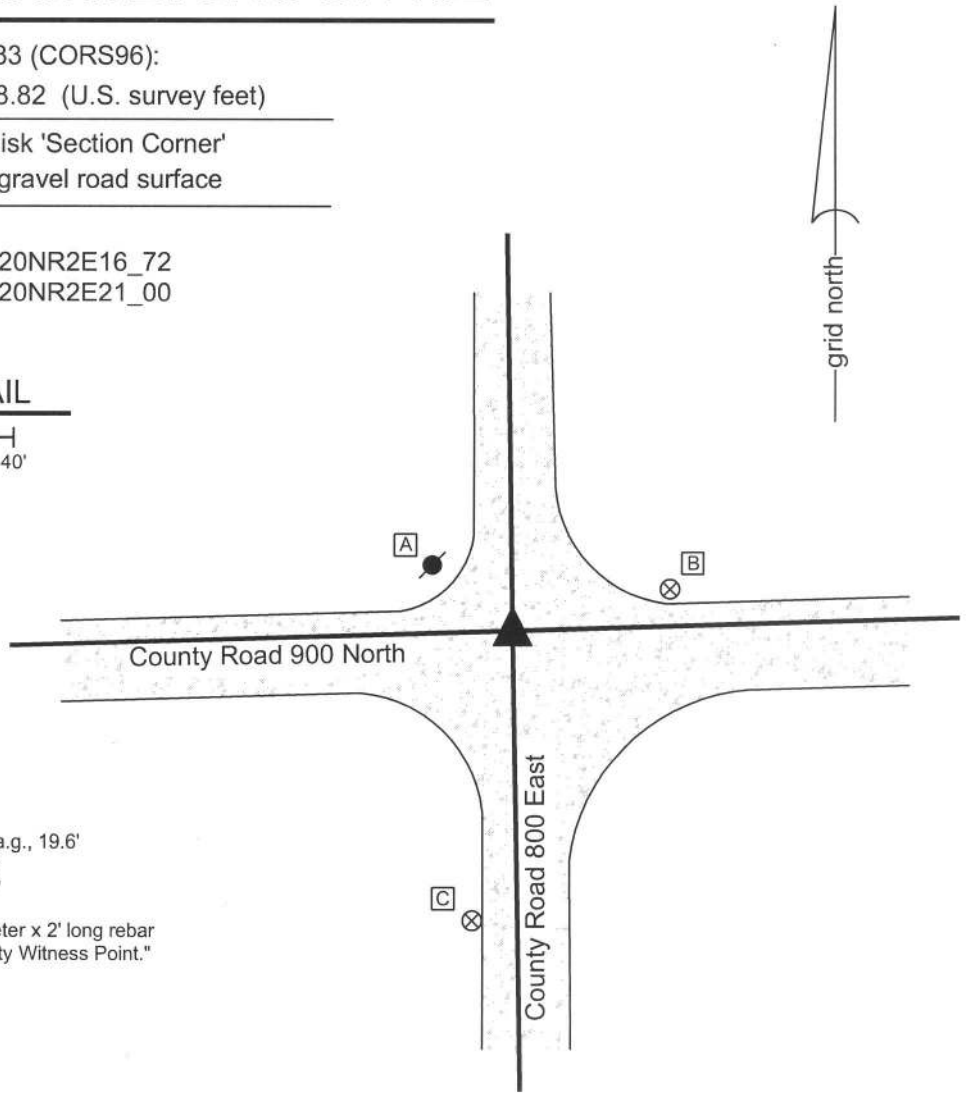
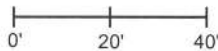
Indiana tie card references:

IN02\_T20NR2E17\_80 IN02\_T20NR2E16\_72

IN02\_T20NR2E20\_08 IN02\_T20NR2E21\_00

### CORNER WITNESS DETAIL

SCALE 1" = 40'



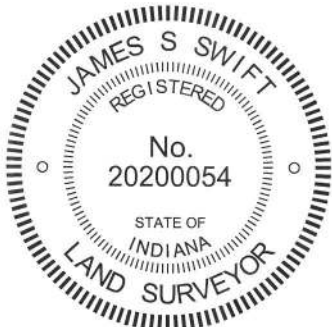
- A - Mag nail set in S.E. side power pole, 2' a.g., 19.6'
- B - Boone County witness mark, flush, 33.8'
- C - Boone County witness mark, flush, 61.1'

Boone County witness mark is a 3/8" diameter x 2' long rebar bearing a metal cap stamped "Boone County Witness Point."

The Harrison monument was set over a stone found.

A BCS record of April 28, 1883 states "found from Oak stump, set no monument." Subsequent records of 1903, 1908 mention the corner as the terminal point for measurements, but do not specifically describe a monument. A BCS tie card dated August 21, 1974 states "no stone found." This corner was excavated on September 10, 2013. Prior to excavation a railroad spike was found at 6 inches deep at the intersection of the gravel roads. The source of the railroad spike is not known. Excavation revealed a piece of an old wood stake found below the railroad spike. Further excavation revealed a stone found at 18 inches deep, slightly north of the railroad spike. With the top 8 inches of the stone exposed, it measured 8 inches E-W by 8 inches N-S. The stone was vertical with a distinct high point and was embedded in the clay layer below the road with the top of the stone at the bottom of the road bed. The stone fit very well with local evidence in the form of visual reckoning of the longer centers of the two roads, fit the characteristics of stones found at many other corners throughout the county and was accepted as the best available evidence of the corner. The stone was left in place, the top 3 inches were encased in concrete and a Harrison monument was set over the top high point. The railroad spike, removed during excavation, had been 1.3 feet south and 0.3 foot east of the stone.

This corner was originally established as a wood post in 1821.



*Kenneth E. Hedge*  
 Kenneth E. Hedge, County Surveyor

*James S. Swift*  
 James S. Swift, IN LS 20200054  
 February 5, 2015

Marion Township

Section 17 T20N, R2E	Section 16 T20N, R2E
Section 20 T20N, R2E	Section 21 T20N, R2E

PHOTOGRAPHIC DOCUMENTATION

Date of photography: September 10, 2013

View of the stone from above and west.



View of the stone from above and north.



View from the east, looking across the stone and west along County Road 900 North.



View from the south, looking across the stone and north along County Road 800 East.



For details and documentation, refer to related sheet "Section Corner Record."