

SECTION CORNER RECORD

NW 800-400

BOONE COUNTY SURVEYOR'S OFFICE

State Plane grid coordinates NAD83 (NSRS 2007):

North: 1787920.85 East: 3103576.93 (U.S. survey feet)

Type of monument: Harrison, 4" disk 'Section Corner'

Depth: four inches above adjacent ground

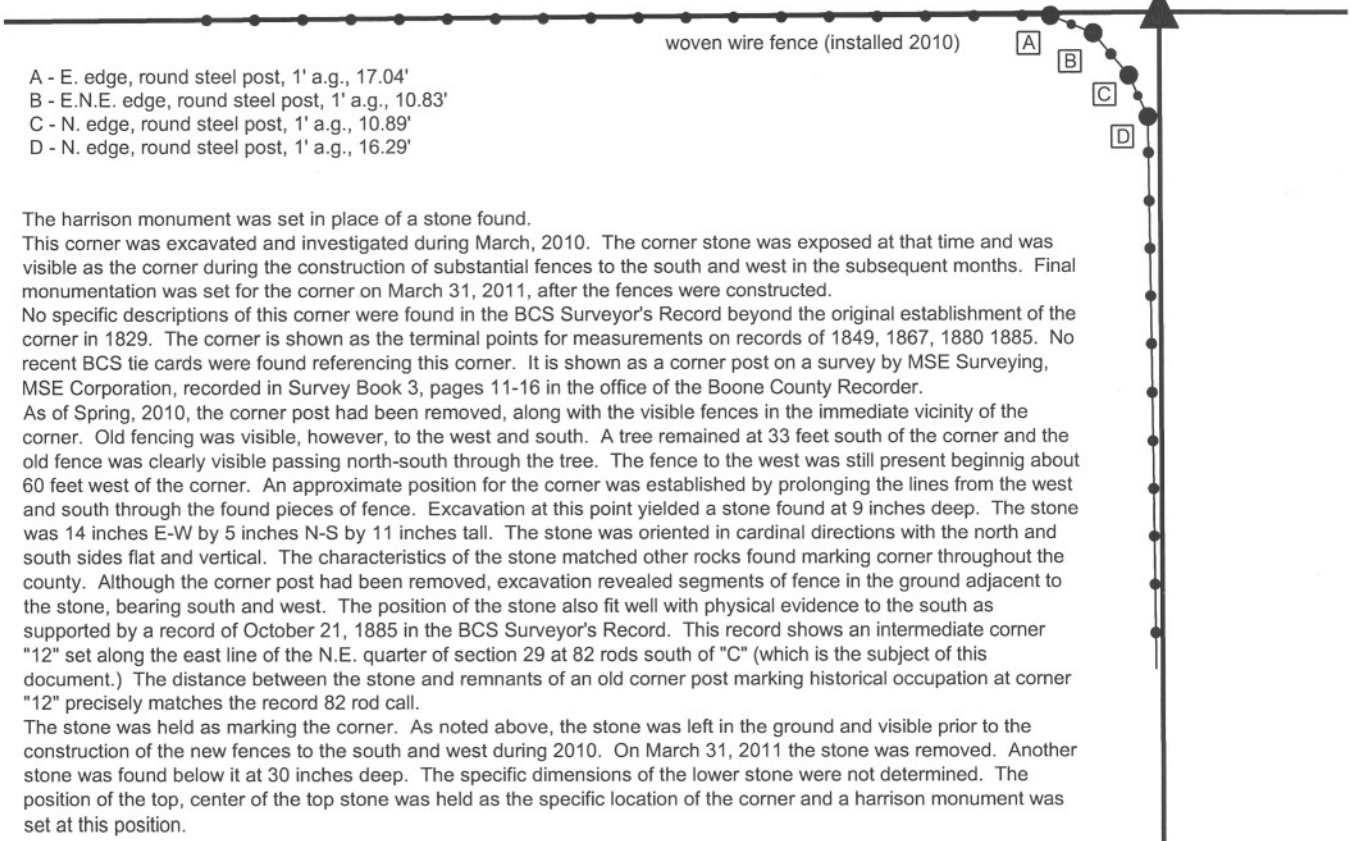
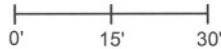
Indiana tie card references:

IN02_T20NR1W20_80 IN02_T20NR1W21_72

IN02_T20NR1W29_08 IN02_T20NR1W28_00

CORNER WITNESS DETAIL

SCALE 1" = 30'



- A - E. edge, round steel post, 1' a.g., 17.04'
- B - E.N.E. edge, round steel post, 1' a.g., 10.83'
- C - N. edge, round steel post, 1' a.g., 10.89'
- D - N. edge, round steel post, 1' a.g., 16.29'

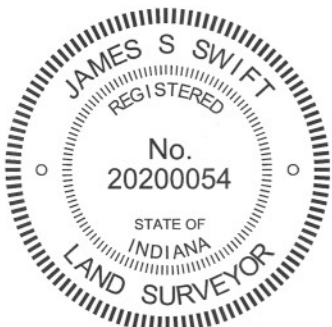
The harrison monument was set in place of a stone found.

This corner was excavated and investigated during March, 2010. The corner stone was exposed at that time and was visible as the corner during the construction of substantial fences to the south and west in the subsequent months. Final monumentation was set for the corner on March 31, 2011, after the fences were constructed.

No specific descriptions of this corner were found in the BCS Surveyor's Record beyond the original establishment of the corner in 1829. The corner is shown as the terminal points for measurements on records of 1849, 1867, 1880 1885. No recent BCS tie cards were found referencing this corner. It is shown as a corner post on a survey by MSE Surveying, MSE Corporation, recorded in Survey Book 3, pages 11-16 in the office of the Boone County Recorder.

As of Spring, 2010, the corner post had been removed, along with the visible fences in the immediate vicinity of the corner. Old fencing was visible, however, to the west and south. A tree remained at 33 feet south of the corner and the old fence was clearly visible passing north-south through the tree. The fence to the west was still present beginning about 60 feet west of the corner. An approximate position for the corner was established by prolonging the lines from the west and south through the found pieces of fence. Excavation at this point yielded a stone found at 9 inches deep. The stone was 14 inches E-W by 5 inches N-S by 11 inches tall. The stone was oriented in cardinal directions with the north and south sides flat and vertical. The characteristics of the stone matched other rocks found marking corner throughout the county. Although the corner post had been removed, excavation revealed segments of fence in the ground adjacent to the stone, bearing south and west. The position of the stone also fit well with physical evidence to the south as supported by a record of October 21, 1885 in the BCS Surveyor's Record. This record shows an intermediate corner "12" set along the east line of the N.E. quarter of section 29 at 82 rods south of "C" (which is the subject of this document.) The distance between the stone and remnants of an old corner post marking historical occupation at corner "12" precisely matches the record 82 rod call.

The stone was held as marking the corner. As noted above, the stone was left in the ground and visible prior to the construction of the new fences to the south and west during 2010. On March 31, 2011 the stone was removed. Another stone was found below it at 30 inches deep. The specific dimensions of the lower stone were not determined. The position of the top, center of the top stone was held as the specific location of the corner and a harrison monument was set at this position.



Kenneth E. Hedge
 Kenneth E. Hedge, County Surveyor

James S. Swift
 James S. Swift, IN LS 20200054
 March 30, 2012

Washington Township

Section 20 T20N, R1W	Section 21 T20N, R1W
Section 29 T20N, R1W	Section 28 T20N, R1W

An arrow points to the intersection of Section 20 and Section 29.

PHOTOGRAPHIC DOCUMENTATION

Date of photography: March 19, 2010 & March 31, 2011

The stone as first exposed on March 19, 2010, along with remnants of wire embedded in the dirt.



The harrison monument set on March 31, 2011.



View from the north, looking across the stone and south along the fence constructed in 2010.



View from the east, looking across the stone and west along the fence constructed in 2010.



For details and documentation, refer to related sheet "Section Corner Record."

SECTION CORNER RECORD

NW 800-450

BOONE COUNTY SURVEYOR'S OFFICE

State Plane grid coordinates NAD83 (2011):

North: 1787903.63 East: 3100934.98 (U.S. survey feet)

Type of monument: Harrison, 4" disk 'Section Corner'

Depth: Four inches above adjacent ground

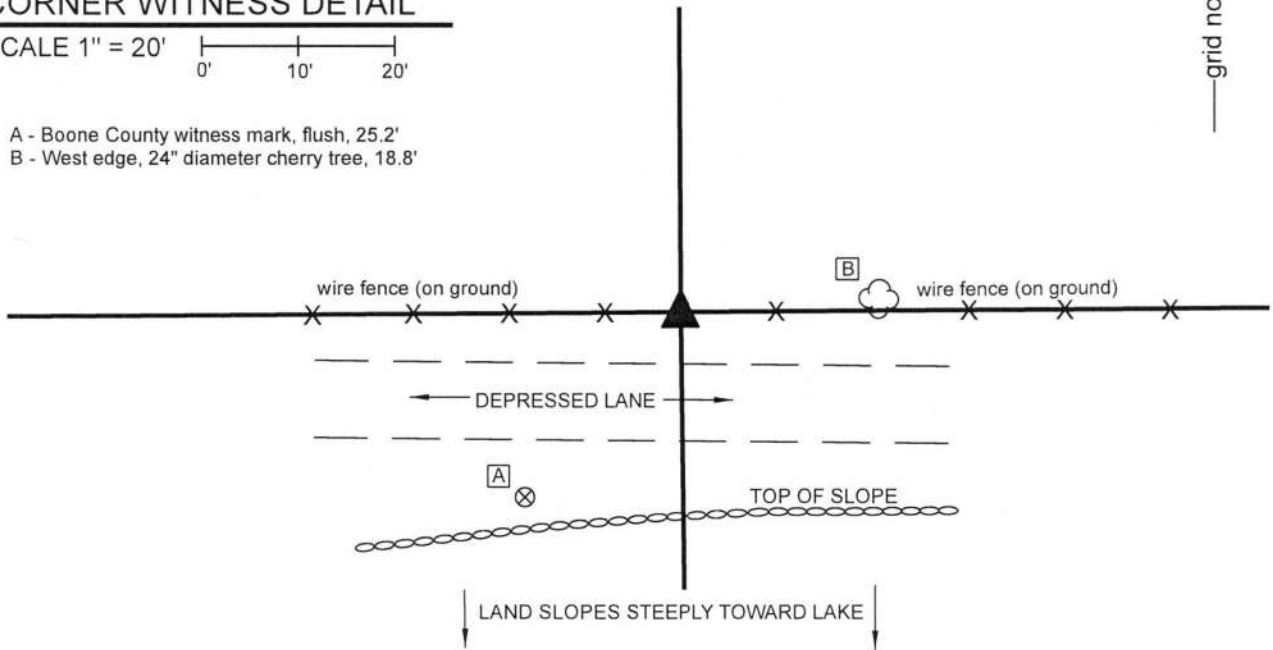
Indiana tie card references:

IN02_T20NR1W20_76 IN02_T20NR1W29_04

CORNER WITNESS DETAIL

SCALE 1" = 20'

- A - Boone County witness mark, flush, 25.2'
- B - West edge, 24" diameter cherry tree, 18.8'



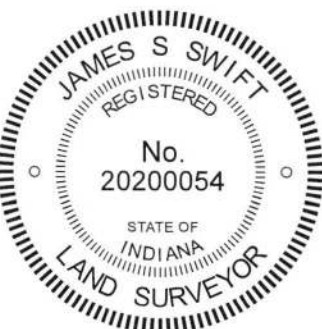
The Harrison monument was set in place of an ancient wood post.

A BCS Record of March 15, 1863 states, with respect to this corner, "Reest'd from one original tree. Had been previously blocked out, was considerably decayed but mark still visible. Set two rocks. Under one 7.7.5 1/2 marked +. Top one 16x12x8 marked notch across top."

No recent BCS tie cards were found referencing this corner.

Excavation was performed at this corner on November 8-9, 2018. An ancient wood post was found in an east-west fence line, fence mostly down but partially attached to the ancient post. The post appeared in the field to represent the old corner post, as the post was clearly not a line post. The fencing attached to each side was wrapped in a manner to indicate that the post was the terminus of old fences to the east and west. The record top stone was found several feet northeast of the post. The stone matched the dimensions of 16 x 12 x 8 inches and had a clearly visible mark etched across a portion of the rock. However, the stone was partially embedded in the ground in a haphazard orientation and appeared to have been displaced from its original position. No other stone was found below this rock. The stone was accepted as being the record top stone called in the 1863 record but was not held as marking the corner due to the apparent positional disturbance. Excavation around the post revealed numerous stones, none of which matched the dimensions of the lower stone described in the 1863 record. A stone at the southeast corner of the post was found at 28 inches deep but was determined to be too large to represent the record lower stone. Given the character of how the wire was attached to the post and the immediate proximity of the top stone called in the 1863 record, the ancient post was accepted as representing the best available evidence of the corner and was held as marking the corner. The post was removed and replaced with a Harrison monument in the same position.

This corner was originally established as a wood post in 1829.



Kenneth E. Hedge, County Surveyor

James S. Swift, IN LS 20200054
 November 20, 2018

Washington Township

Section 20
T20N, R1W

Section 29
T20N, R1W

SECTION CORNER RECORD

NW 800-500

BOONE COUNTY SURVEYOR'S OFFICE

State Plane grid coordinates NAD83 (CORS96):

North: 1787883.84 East: 3098276.56 (U.S. survey feet)

Type of monument: etched "+" on top of stone

Depth: One inch above adjacent ground


Indiana tie card references:

IN02_T20NR1W19_80 IN02_T20NR1W20_72

IN02_T20NR1W30_08 IN02_T20NR1W29_00

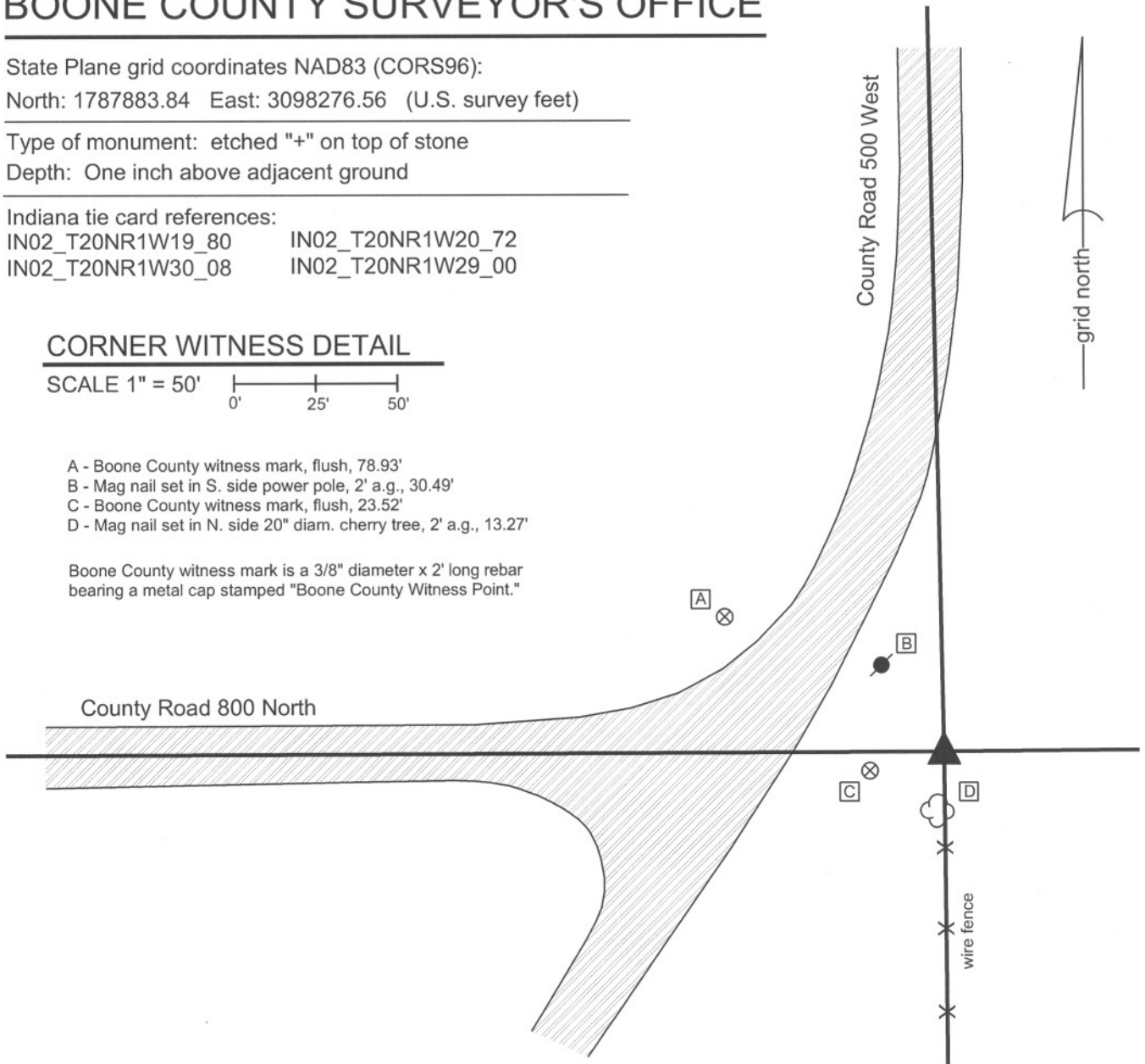
CORNER WITNESS DETAIL

SCALE 1" = 50'



- A - Boone County witness mark, flush, 78.93'
- B - Mag nail set in S. side power pole, 2' a.g., 30.49'
- C - Boone County witness mark, flush, 23.52'
- D - Mag nail set in N. side 20" diam. cherry tree, 2' a.g., 13.27'

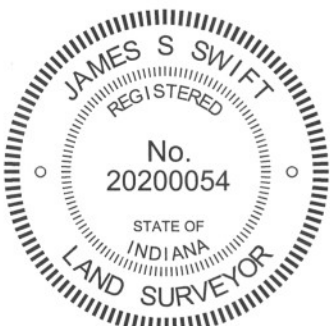
Boone County witness mark is a 3/8" diameter x 2' long rebar bearing a metal cap stamped "Boone County Witness Point."



The stone was found in place.

The corner is shown as present but not described on a BCS record of July 6, 1832. A BCS record of March 2, 1863 states "One bearing tree green: Stone at corner recognized by previous surveys and by the persons interested." A BCS tie card dated November 8, 1967 states "exposed stone with + beside corner post did not replace."

The stone is situated at the northwest corner of a wood end post. The post is the northerly terminus of an old fence to the south. The stone is at the easterly extension of the county road to the west and the southerly extension of the county road to the north and fits well with surrounding corners. The stone was accepted as marking the corner and was left in place as found.



Kenneth E. Hedge
Kenneth E. Hedge, County Surveyor

James S. Swift
James S. Swift, IN LS 20200054
March 30, 2012

Washington Township

Section 19 T20N, R1W	Section 20 T20N, R1W
Section 30 T20N, R1W	Section 29 T20N, R1W

PHOTOGRAPHIC DOCUMENTATION

Date of photography: May 5, 2010

The stone at the base of the post. View from the west.



View of the stone from above.



For details and documentation, refer to related sheet "Section Corner Record."

SECTION CORNER RECORD

NW 850-500

BOONE COUNTY SURVEYOR'S OFFICE

State Plane grid coordinates NAD83 (CORS96):

North: 1790536.86 East: 3098225.83 (U.S. survey feet)

Type of monument: Harrison, 4" disk 'Section Corner'


Depth: six inches below adjacent gravel road surface

Indiana tie card references:

IN02_T20NR1W19_44

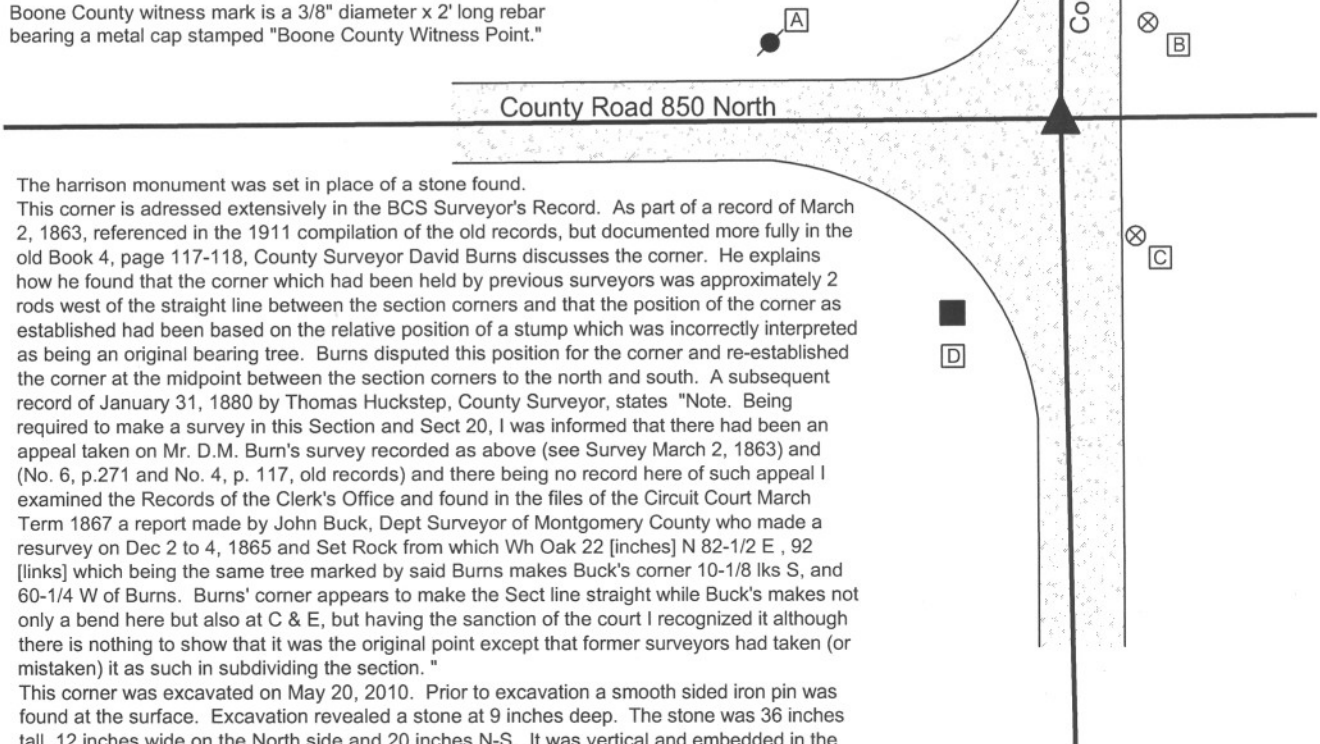
IN02_T20NR1W20_36

CORNER WITNESS DETAIL

SCALE 1" = 40' 

- A - Mag nail set in E. side power pole, 2' a.g., 60.70'
- B - Boone County witness mark, flush, 26.93'
- C - Boone County witness mark, flush, 29.17'
- D - Mag nail set in N. side wood post, 2' a.g., 46.49'

Boone County witness mark is a 3/8" diameter x 2' long rebar bearing a metal cap stamped "Boone County Witness Point."



The Harrison monument was set in place of a stone found.

This corner is addressed extensively in the BCS Surveyor's Record. As part of a record of March 2, 1863, referenced in the 1911 compilation of the old records, but documented more fully in the old Book 4, page 117-118, County Surveyor David Burns discusses the corner. He explains how he found that the corner which had been held by previous surveyors was approximately 2 rods west of the straight line between the section corners and that the position of the corner as established had been based on the relative position of a stump which was incorrectly interpreted as being an original bearing tree. Burns disputed this position for the corner and re-established the corner at the midpoint between the section corners to the north and south. A subsequent record of January 31, 1880 by Thomas Huckstep, County Surveyor, states "Note. Being required to make a survey in this Section and Sect 20, I was informed that there had been an appeal taken on Mr. D.M. Burn's survey recorded as above (see Survey March 2, 1863) and (No. 6, p.271 and No. 4, p. 117, old records) and there being no record here of such appeal I examined the Records of the Clerk's Office and found in the files of the Circuit Court March Term 1867 a report made by John Buck, Dept Surveyor of Montgomery County who made a resurvey on Dec 2 to 4, 1865 and Set Rock from which Wh Oak 22 [inches] N 82-1/2 E, 92 [links] which being the same tree marked by said Burns makes Buck's corner 10-1/8 lks S, and 60-1/4 W of Burns. Burns' corner appears to make the Sect line straight while Buck's makes not only a bend here but also at C & E, but having the sanction of the court I recognized it although there is nothing to show that it was the original point except that former surveyors had taken (or mistaken) it as such in subdividing the section."

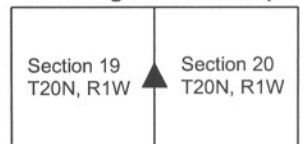
This corner was excavated on May 20, 2010. Prior to excavation a smooth sided iron pin was found at the surface. Excavation revealed a stone at 9 inches deep. The stone was 36 inches tall, 12 inches wide on the North side and 20 inches N-S. It was vertical and embedded in the clay layer below the road, protruding 4 inches into the base of the road bed. The stone had a distinct high point which was held as marking the corner. This position is approximately 6 feet south and 40 feet west of the midpoint of the line connecting the section corners to the north and south, which fits with Huckstep's description of the position of the corner established by Buck and recognized by the court. The stone was held as marking the corner. It was removed and a Harrison monument was set in the position of the distinct high point. The iron pin, removed during excavation, had been along the northeast edge of the stone, being specifically 1 foot east and 0.6 foot north of the high point of the stone.




 Kenneth E. Hedge, County Surveyor


 James S. Swift, IN LS 20200054
 March 30, 2012

Washington Township



PHOTOGRAPHIC DOCUMENTATION

Date of photography: May 20, 2010

View of the stone as first exposed.
View from the west.



View of the stone more fully exposed.
View from the north.



View from the north, looking across the stone
and south along County Road 500 West.



View of the flat, vertical north side of the stone
fully exposed.



The stone after being removed from the road bed.
The top of the stone is closest to the camera and
the flat (north) side is against the road.



For details and documentation, refer to
related sheet "Section Corner Record."

SECTION CORNER RECORD

NW 900-400

BOONE COUNTY SURVEYOR'S OFFICE

State Plane grid coordinates NAD83 (CORSS96):

North: 1793233.30 East: 3103594.69 (U.S. survey feet)

Type of monument: Harrison, 4" disk 'Section Corner'

Depth: One inch below adjacent road surface

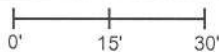
Indiana tie card references:

IN02_T20NR1E17_80 IN02_T20NR1E16_72

IN02_T20NR1E20_08 IN02_T20NR1E21_00

CORNER WITNESS DETAIL

SCALE 1" = 30'



A - Mag nail set in E. side power pole, 2' a.g., 27.0'

B - Boone County witness mark, flush, 32.2'

C - Boone County witness mark, flush, 29.2'

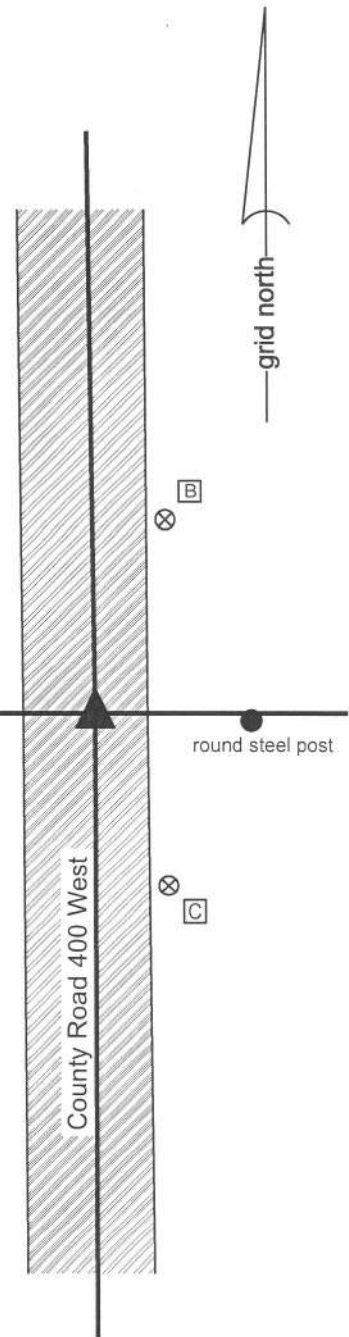
Boone County witness mark is a 3/8" diameter x 2' long rebar bearing a metal cap stamped "Boone County Witness Point."

The Harrison monument was set over a stone found.

A BCS record of March 13-14, 1863 states, with respect to this corner, "Reest'd from trees. The Ash is standing, the other is cut down. Set Rock 17x10x10 marked X." It is noted that most BCS records refer to the mark on the stone as as "+". On this particular record the "+" is obliterated and marked over with an "X". No recent BCS tie cards were found referencing this corner.

Excavation was performed at this corner on September 12, 2014. Prior to excavation, a 3/4 inch diameter rebar was found at 4 inches deep in a hole in the asphalt. Excavation revealed a stone found at 16 inches, east of the rebar. The stone was embedded in the clay layer below the road, protruding 2 to 3 inches out of the clay into the bottom of the road. The top of the stone was triangular in shape and appeared to be vertical, though the top of the stone was sloping with the high point at the northwest tip. An deeply etched X mark was clearly visible at the northwest tip. Notably, the mark was not oriented with cardinal directions in the fashion of most marks found on the top of corner stones. This orientation appeared to fit with the written record wherein the "+" was replaced with an "X". The stone was measured to be 9 inches N-S by 9 inches E-W, though the measurements were slightly subjective, given the irregular shape of the top of the stone. The 1863 records calls for 10x10. 12 inches was exposed on the west side of the rock and the stone appeared to be yet taller. The stone was accepted as being the same monument called for in the 1863 record and was held as marking the corner. A Harrison monument was set directly over the etched mark on the top, northwest corner of the stone. The rebar, removed during excavation, had been 2.7 feet west of the mark on the stone. The source of the rebar is not known.

This corner was originally established as a wood post in 1829.



Kenneth E. Hedge
Kenneth E. Hedge, County Surveyor

James S. Swift
James S. Swift, IN LS 20200054

March 27, 2015

Washington Township

Section 17 T20N, R1E	Section 16 T20N, R1E
Section 20 T20N, R1E	Section 21 T20N, R1E

PHOTOGRAPHIC DOCUMENTATION

Date of photography: September 12, 2014

The stone as originally found.



The more fully exposed, viewed from the west.



The stone, brushed, with much of the vertical east side exposed and the etched "x" mark visible at the northwest tip of the stone.



View from above the stone, looking north along County Road 400 West.



Close-up of the northwest tip of the stone, washed and scrubbed to show the etched mark.



For details and documentation, refer to related sheet "Section Corner Record."

SECTION CORNER RECORD

BOONE COUNTY SURVEYOR'S OFFICE

NW 900-500

State Plane grid coordinates NAD83 (CORS96):

North: 1793202.81 East: 3098255.23 (U.S. survey feet)

Type of monument: Harrison, 4" disk 'Section Corner'

Depth: six inches below adjacent gravel road surface

Indiana tie card references:

IN02_T20NR1W18_80 IN02_T20NR1W17_72

IN02_T20NR1W19_08 IN02_T20NR1W20_00

CORNER WITNESS DETAIL

SCALE 1" = 30'

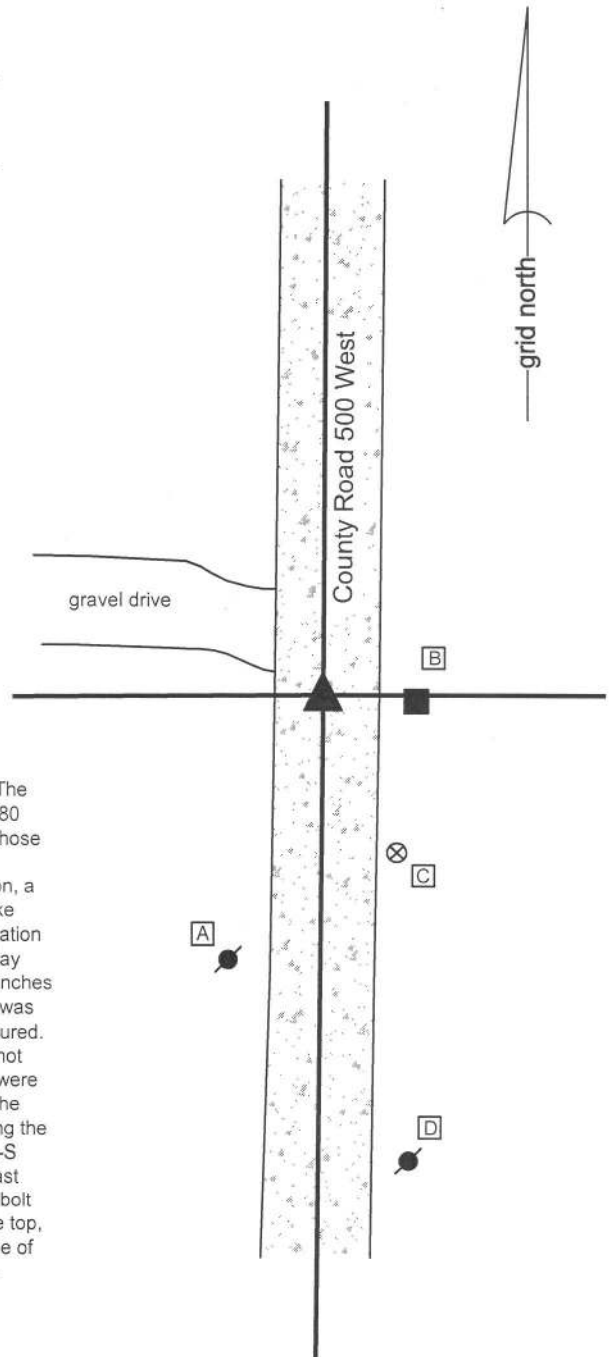
A - Mag nail set in E. side power pole, 2' a.g., 43.4'

B - Mag nail set in S. side wood post, 1' a.g., 14.5'

C - Boone County witness mark, flush, 27.0'

D - Mag nail set in N. side power pole, 72.6'

Boone County witness mark is a 3/8" diameter x 2' long rebar bearing a metal cap stamped "Boone County Witness Point."

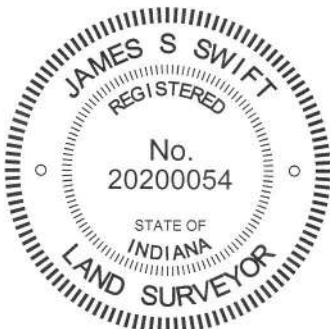


The Harrison monument was set over the top, center of a stone found.

No specific descriptions of this corner were found in the BCS Surveyor's Record. The corner is mentioned as the terminal point for measurements in records of 1863, 1880 and 1883, indicating that some monument was present from which to measure at those times. No recent BCS tie cards were found referencing this corner.

Excavation was performed at this corner on September 8, 2014. Prior to excavation, a square head "bolt spike" was found 3 inches deep in the gravel road. The bolt spike was removed and found to be on a 5/8 inch diameter shaft, 12 inches long. Excavation revealed a stone found at 14 inches deep. The stone was fully embedded in the clay layer below the road with the top of the stone at the top of the clay layer. With six inches of the top of the stone exposed, it measured 11 inches N-S by 13 inches E-W and was clearly larger in the vertical dimension. The total height of the stone was not measured. The stone had a generally flat top. A vague, possible mark was visible on top but not positively confirmed as being created by humans. The characteristics of this rock were similar to those of other stones found for which the records are similar, being that the County Surveyor had apparently found a monument at the corner rather than setting the monument. The stone fit well with local evidence in the form of the center of the N-S and approximately in-line with, though slightly north of, the old wood post on the east side of the road. The top, center of the stone was held as marking the corner. The bolt spike, removed during excavation, had been 0.8 foot south and 0.8 foot west of the top, center of the stone, which would have been approximately along the southwest side of the stone. The stone was left in place and a Harrison monument was set over the approximate center point of the flat top of the stone.

This corner was originally established as a wood post in 1829.



Kenneth E. Hedge
 Kenneth E. Hedge, County Surveyor

James S. Swift
 James S. Swift, IN LS 20200054
 March 27, 2015

Washington Township

Section 18 T20N, R1W	Section 17 T20N, R1W
Section 19 T20N, R1W	Section 20 T20N, R1W

PHOTOGRAPHIC DOCUMENTATION

Date of photography: September 8, 2014

The stone as originally found.



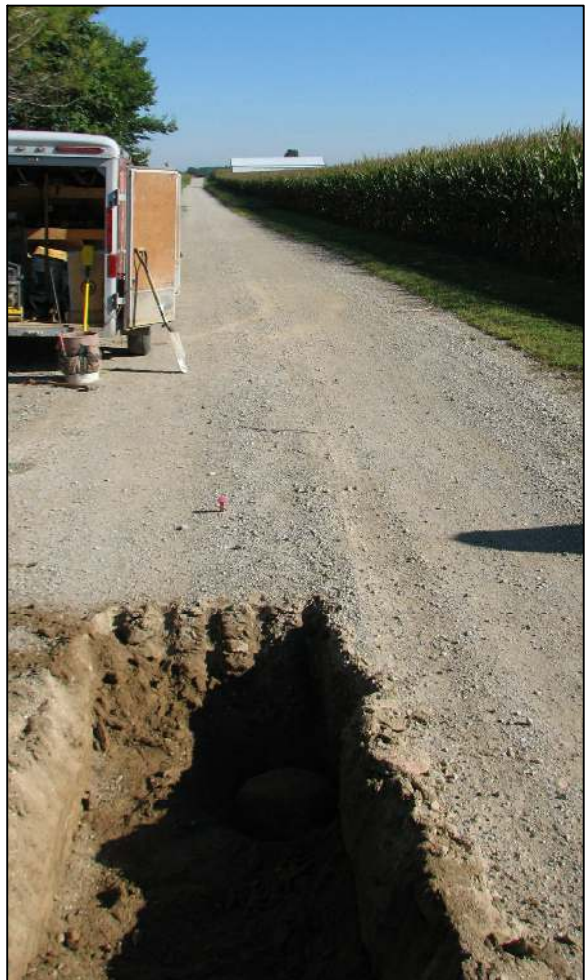
The stone more fully exposed.



View from the west, looking across the stone (in the shadows) and towards the post on the east edge of County Road 500 East.



View from the south, looking across the stone (in the shadows) and north along County Road 500 East.



For details and documentation, refer to related sheet "Section Corner Record."